

Monitoring Report: GLP-1 RA Prescribing Trends - September 2024 Data

Samuel Gratzl, PhD*

Patricia J Rodriguez, PhD, MPH*

Brianna M Goodwin Cartwright, MS

Charlotte Baker, DrPH, MPH, CPH

Nicholas L Stucky, MD, PhD

*Denotes co-first author

Affiliations: All authors are affiliated with Truveta, Inc.

Corresponding author:

Dr Nicholas Stucky

Truveta, Inc

1745 114th Ave SE, Bellevue, WA 98004

Email: nicholass@truveta.com

Abstract

Background: Limited recent data exist on prescribing patterns and patient characteristics for glucagon-like peptide 1 receptor agonists (GLP-1 RAs), an important drug class used as anti-diabetic medication (ADM) for patients with type 2 diabetes mellitus (T2D) and/or anti-obesity medication (AOM) in patients with overweight or obesity.

For brevity, we use the term GLP-1 RA to refer to both GLP-1 RA and dual GLP-1 RA/GIP medications.

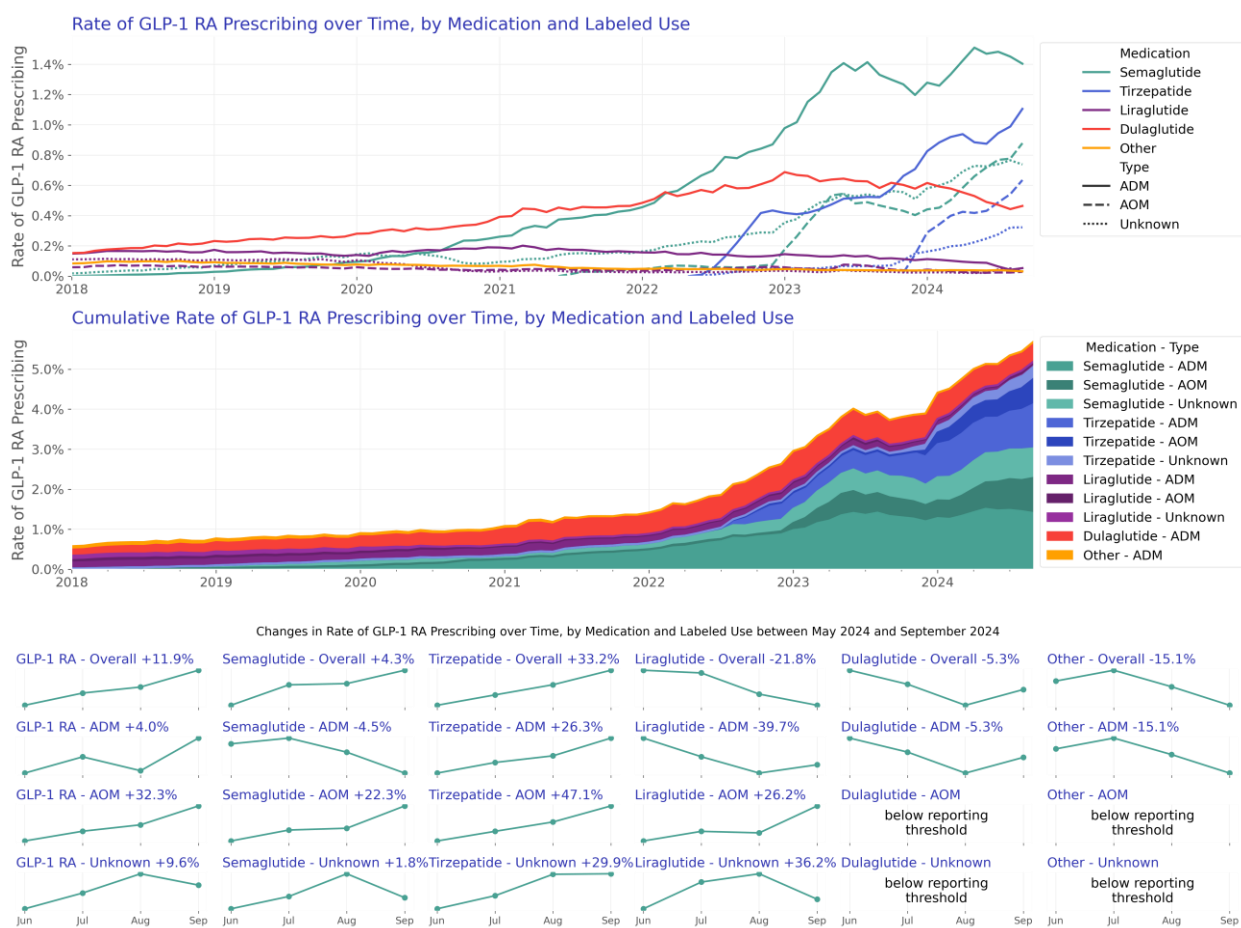
Objective: To describe recent trends in prescribing and dispensing of GLP-1-based medications in the US.

Methods: Using a subset of real-world electronic health record (EHR) data from Truveta, a growing collective of health systems that provide more than 18% of all daily clinical care in the US, we identified people who were prescribed a GLP-1-based medication between January 01, 2018 and September 30, 2024. We describe prescribing volumes and patient characteristics over time, by medication, and by FDA-labeled use. Among the subset of patients for whom post-prescription dispensing data

is available, we describe the proportion and characteristics of patients who were and were not dispensed a GLP-1 RA following their prescription.

Results: 1,449,442 patients were prescribed a GLP-1 RA between January 2018 and September 2024, with 6,341,367 total prescriptions during this period. Among first-time prescriptions for which use could be established, ADMs accounted for 80.3% and AOMs accounted for 19.7%. The most common first-time medication was semaglutide (n = 821,890). Among those with available data, 69.5% of first-time ADM prescriptions overall and 70.6% in June 2024 had a fill within 60 days. By comparison, 45.4% of first-time AOM prescriptions overall and 50.1% in June 2024 had a fill within 60 days.

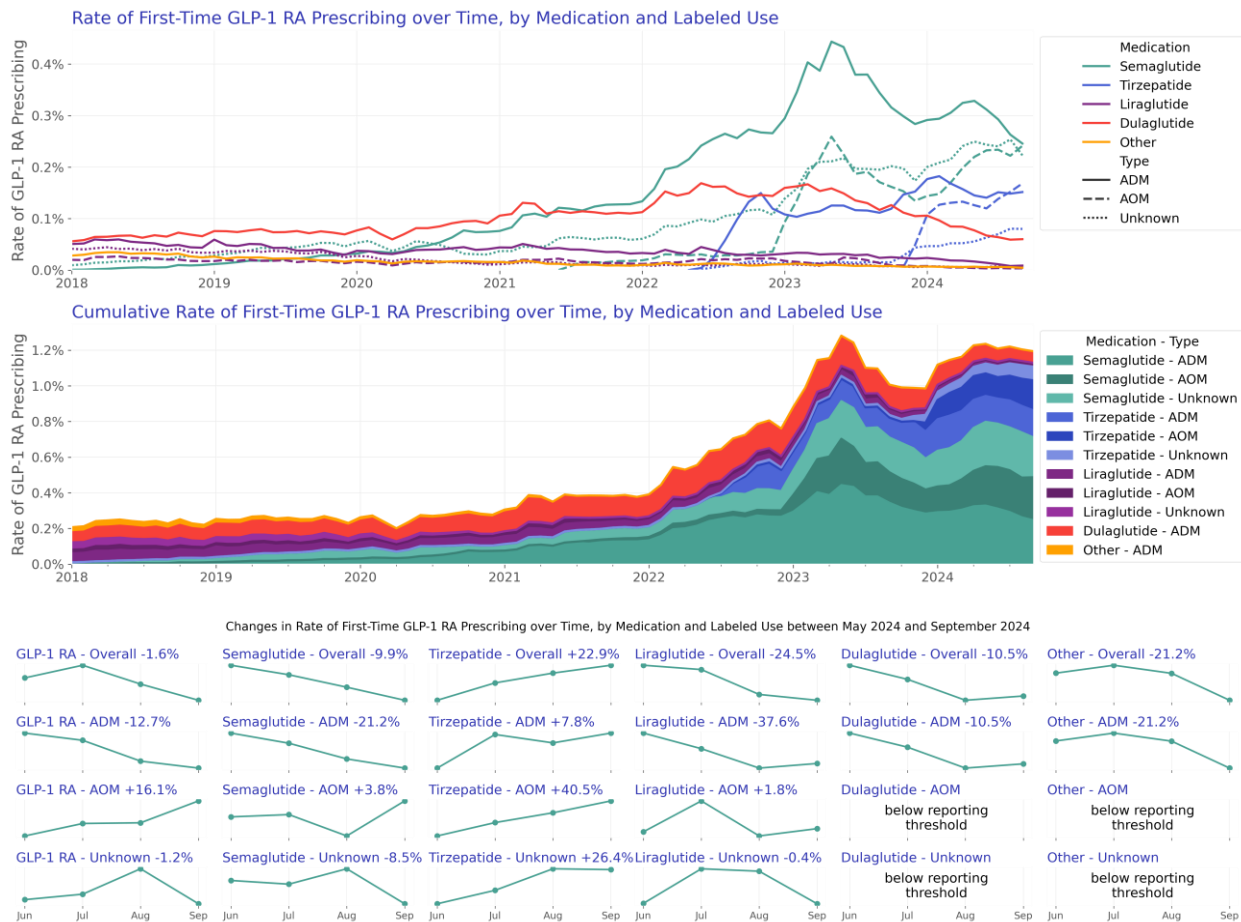
Trends in Prescribing



	GLP-1 RA	Semaglutide	Tirzepatide	Liraglutide	Dulaglutide	Other
Overall						
June 2024	4.81%	2.82%	1.47%	0.13%	0.49%	0.04%
September 2024	5.38%	2.94%	1.95%	0.10%	0.46%	0.03%
Change (percentage)	+11.94%	+4.26%	+33.24%	-21.85%	-5.28%	-15.07%
Difference (percentage points)	+0.57%	+0.12%	+0.49%	-0.03%	-0.03%	-0.01%
ADM						
June 2024	2.89%	1.47%	0.87%	0.09%	0.49%	0.04%
September 2024	3.01%	1.40%	1.11%	0.05%	0.46%	0.03%
Change (percentage)	+3.96%	-4.50%	+26.35%	-39.71%	-5.28%	-15.07%
Difference (percentage points)	+0.11%	-0.07%	+0.23%	-0.03%	-0.03%	-0.01%
AOM						
June 2024	1.15%	0.72%	0.43%	0.02%	n/a	n/a
September 2024	1.52%	0.88%	0.63%	0.03%	n/a	n/a
Change (percentage)	+32.28%	+22.28%	+47.12%	+26.21%		
Difference (percentage points)	+0.37%	+0.16%	+0.20%	+0.01%		
Unknown						
June 2024	0.99%	0.73%	0.25%	0.02%	n/a	n/a
September 2024	1.08%	0.74%	0.32%	0.03%	n/a	n/a
Change (percentage)	+9.61%	+1.75%	+29.86%	+36.22%		
Difference (percentage points)	+0.10%	+0.01%	+0.07%	+0.01%		

- Overall prescribing rates (GLP-1 RA prescriptions per total prescriptions) in September 2024 increased relative to June 2024 (+11.94%).
- Month-over-month ADM prescribing increased in July, slightly decreased in August, but rose again in September 2024. ADM prescribing trends in September 2024 are about the same June 2024 (+3.96%).
- Among ADMs, semaglutide was the most prescribed medication. In late 2023, tirzepatide surpassed dulaglutide as the second most commonly prescribed ADM.
- AOM prescribing increased substantially in September 2024 compared to June 2024 (+32.28%).
- Semaglutide was the most commonly prescribed AOM, followed by AOM tirzepatide. Prescribing of AOM tirzepatide was observed in the first month of availability in pharmacies, December 2023.

Trends in First-Time Prescribing

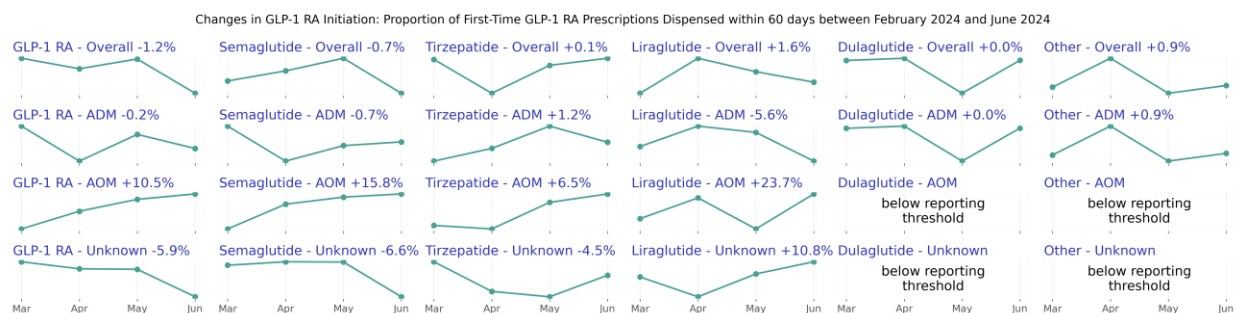
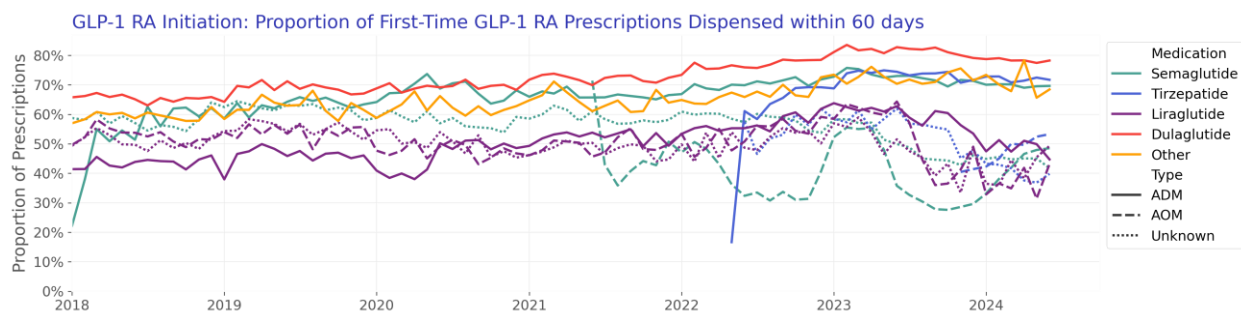


	GLP-1 RA	Semaglutide	Tirzepatide	Liraglutide	Dulaglutide	Other
Overall						
June 2024	1.20%	0.79%	0.32%	0.02%	0.07%	0.01%
September 2024	1.18%	0.71%	0.39%	0.02%	0.06%	0.00%
Change (percentage)	-1.62%	-9.88%	+22.86%	-24.53%	-10.51%	-21.23%
Difference (percentage points)	-0.02%	-0.08%	+0.07%	-0.01%	-0.01%	-0.00%
ADM						
June 2024	0.54%	0.31%	0.14%	0.01%	0.07%	0.01%
September 2024	0.47%	0.25%	0.15%	0.01%	0.06%	0.00%
Change (percentage)	-12.73%	-21.18%	+7.85%	-37.64%	-10.51%	-21.23%
Difference (percentage points)	-0.07%	-0.07%	+0.01%	-0.01%	-0.01%	-0.00%
AOM						
June 2024	0.36%	0.23%	0.12%	0.00%	n/a	n/a
September 2024	0.41%	0.24%	0.17%	0.00%	n/a	n/a
Change (percentage)	+16.12%	+3.78%	+40.47%	+1.84%		
Difference (percentage points)	+0.06%	+0.01%	+0.05%	+0.00%		

Unknown						
June 2024	0.31%	0.24%	0.06%	0.01%	n/a	n/a
September 2024	0.31%	0.22%	0.08%	0.01%	n/a	n/a
Change (percentage)	-1.25%	-8.47%	+26.43%	-0.37%		
Difference (percentage points)	-0.00%	-0.02%	+0.02%	-0.00%		

- First-time prescribing rates (first-time GLP-1 RA prescriptions per total prescriptions) in September 2024 are about the same as rates in June 2024 (-1.62%).
- First-time prescribing of ADMs decreased in September 2024 relative to June 2024 (-12.73%).
- First-time prescribing of AOMs increased in September 2024 relative to June 2024 (+16.12%).

Trends in Dispensing



	GLP-1 RA	Semaglutide	Tirzepatide	Liraglutide	Dulaglutide	Other
Overall						
March 2024	57.89%	55.26%	59.18%	45.16%	78.25%	67.86%
June 2024	57.21%	54.90%	59.22%	45.89%	78.26%	68.46%
Change (percentage)	-1.18%	-0.66%	+0.07%	+1.61%	+0.01%	+0.88%
Difference (percentage points)	-0.68%	-0.36%	+0.04%	+0.73%	+0.00%	+0.60%
ADM						
March 2024	70.76%	70.16%	70.83%	47.36%	78.25%	67.86%
June 2024	70.60%	69.64%	71.72%	44.72%	78.26%	68.46%
Change (percentage)	-0.23%	-0.73%	+1.25%	-5.58%	+0.01%	+0.88%
Difference (percentage points)	-0.16%	-0.51%	+0.88%	-2.64%	+0.00%	+0.60%
AOM						
March 2024	45.31%	41.91%	50.02%	34.90%	n/a	n/a
June 2024	50.08%	48.52%	53.29%	43.18%	n/a	n/a
Change (percentage)	+10.53%	+15.79%	+6.54%	+23.73%		
Difference (percentage points)	+4.77%	+6.62%	+3.27%	+8.28%		
Unknown						
March 2024	44.13%	44.72%	41.72%	44.50%	n/a	n/a
June 2024	41.51%	41.78%	39.84%	49.30%	n/a	n/a
Change (percentage)	-5.93%	-6.58%	-4.51%	+10.77%		
Difference (percentage points)	-2.62%	-2.94%	-1.88%	+4.79%		

- During the full time period, 73.3% of GLP-1 RA prescriptions had a dispense within 60 days of their prescription (e.g., were initiated within 60 days).
- For patients first prescribed an ADM in June 2024, 70.6% filled a GLP-1 RA within 60 days. Initiation rates for ADM GLP-1 RA are about the same in June 2024 relative to March 2024 (-0.23%).
- For patients first prescribed an AOM in June 2024, 50.1% filled a GLP-1 RA within 60 days. Initiation rates for AOM GLP-1 RA increased in June 2024 relative to March 2024 (+10.53%).

About this report

This report provides recent trends in the prescribing and dispensing of glucagon-like peptide-1 receptor agonist (GLP-1 RAs)-based medications, including dual GLP-1 RA/gastric inhibitory polypeptide (GIP) over time, by medication, and by FDA-labeled use. We used near real-time, aggregated electronic health record (EHR) data from a collective of US healthcare systems to describe prescribing and dispensing of GLP-1 RA medications from January 2018 to September 2024.

Introduction

Obesity and type 2 diabetes mellitus (T2D) are interconnected epidemics with a high prevalence and individual and combined negative impacts on health (CDC, 2020, Hales, 2020). Glucagon-like peptide-1 receptor agonist (GLP-1 RAs) -based medications, including dual GLP-1 RA/gastric inhibitory polypeptide (GIP), have been shown to improve glycemic control in patients with T2D and reduce weight in patients with and without T2D (Davies, 2015, Davies, 2021, Garvey, 2023, Jastreboff, 2022, Wilding, 2023, Yeh, 2023). GLP-1 RA have also demonstrated cardiovascular benefit in patients with and without T2D (Lincoff, 2023, Ussher, 2023).

Interest in these medications has recently accelerated, largely for their weight-loss effects; however, limited empiric data exist on prescribing, dispensing, and patient characteristics. Access to and use of GLP-1 RA may be impacted by high cost, limited insurance coverage for patients without T2D and medication shortages.

Methods

Data

We evaluated prescribing and dispensing of GLP-1 RAs between January 2018 and September 2024 using a subset of Truveta Data. Truveta provides access to continuously updated, linked, and de-identified electronic health record (EHR) from a collective of US health care systems that provide 18% of all daily clinical care in the US, including structured information on demographics, encounters, diagnoses, vital signs (e.g., weight, BMI, blood pressure), medication requests (prescriptions), medication administration, laboratory and diagnostic tests and results (e.g., HbA1c tests and values), and procedures. Updated EHR data are provided daily to Truveta by member health care systems. In addition to EHR data for care delivered within Truveta member health care systems, medication dispensing and social drivers of health (SDOH) information are made available through linked third-party data. Medication dispense (via e-prescribing data) includes fills for prescriptions written both within and outside Truveta member health care systems, providing greater observability into patients' medication history. Medication dispense histories are updated at the time of the encounter and include fill dates, NDC or RxNorm codes, quantity dispensed, and days of medication supplied.

Population

We identified GLP-1 RA prescriptions (medication requests) and dispenses among adults using RxNorm and NDC codes for dulaglutide, exenatide, liraglutide, lixisenatide, semaglutide, and tirzepatide. Exenatide and lixisenatide were grouped as 'other' given small relative sizes. Brands were identified when possible using RxNorm and NDC codes. Brands labeled for treatment of T2D were classified as ADMs, and brands labeled for treatment of overweight and obesity were classified as AOMs. When brand could not be established, the labeled use was classified as unknown.

Prescribing Analysis

Characteristics of patients ever prescribed a GLP-1 RA were summarized, including demographics, social drivers of health (SDOH), and presence of T2D and/or overweight or obesity. Characteristics are provided by medication and by year of first prescription.

Overall and first-time prescribing rates of GLP-1 RA were summarized over time by medication and labeled use. The prescribing rate was calculated monthly as the number of patients with a GLP-1 RA prescription divided by the number of patients with any prescription in the month. Absolute differences and percentage changes in the rate of GLP-1 RA prescribing over the most recent 3-month period were summarized overall and by medication and labeled use.

Dispensing Analysis

We describe the proportion of GLP-1 RA prescriptions (overall and first-time) with a dispense occurring within 60 days. Dispensing analyses were restricted to prescriptions for which complete 60-day dispensing outcomes could be observed. Dispensing outcomes were considered observable if (1) a dispense was recorded in the 60 days following the prescription, and/or (2) an encounter took place after the 60-day period ended (at which time any dispenses would be observed). To allow sufficient follow-up, we report dispensing with a 90-day delay. Given shortages and expected substitutions at the pharmacy, we considered the dispense of any GLP-1 RA, which could differ from the prescribed GLP-1 RA.

We plot the proportion of prescriptions (overall and first-time) dispensed within 60 days over time, by medication and use. Differences in dispensing were expected between ADMs and AOMs given ADMs are typically covered by insurance, whereas insurance coverage for AOMs is limited. As such, we provide dispensing rates stratified by FDA labeled use. Further, we stratify dispensing by age 65+ vs. 18-64 as a proxy for Medicare coverage. Medicare never provides coverage for AOMs, whereas commercial insurers may.

Results

Overall population

The demographics of patients by first-prescribed medication are as follows:

Table 1: Patient Characteristics by First-Prescribed GLP-1 RA Medication.

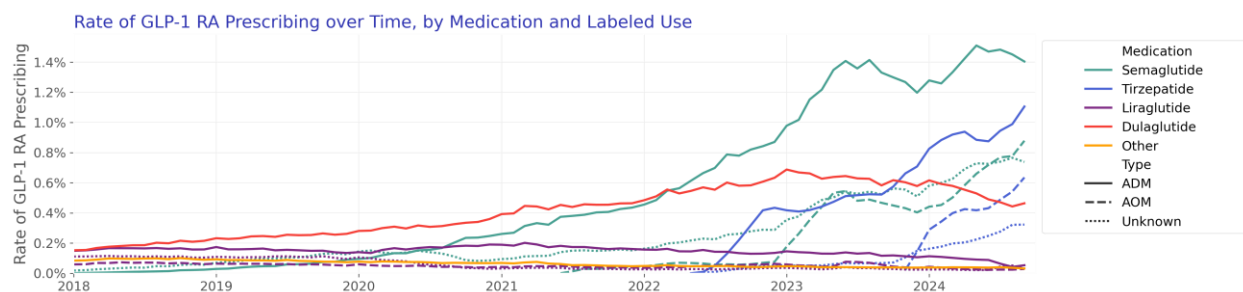
	Semaglutide	Tirzepatide	Liraglutide	Dulaglutide	Other	Overall
N	821,890 (100.00%)	187,089 (100.00%)	161,419 (100.00%)	245,907 (100.00%)	34,626 (100.00%)	1,450,931 (100.00%)
Age Group						
18-44	209,113 (25.44%)	58,881 (31.47%)	41,207 (25.53%)	33,894 (13.78%)	4,113 (11.88%)	347,208 (23.93%)
45-64	406,321 (49.44%)	96,384 (51.52%)	78,573 (48.68%)	123,724 (50.31%)	16,687 (48.19%)	721,689 (49.74%)
65+	206,456 (25.12%)	31,824 (17.01%)	41,639 (25.80%)	88,289 (35.90%)	13,826 (39.93%)	382,034 (26.33%)
Sex						
Female	531,337 (64.65%)	128,839 (68.87%)	104,531 (64.76%)	132,224 (53.77%)	18,268 (52.76%)	915,199 (63.08%)
Male	290,553 (35.35%)	58,250 (31.13%)	56,888 (35.24%)	113,683 (46.23%)	16,358 (47.24%)	535,732 (36.92%)
Race						
White	593,719 (72.24%)	139,523 (74.58%)	117,709 (72.92%)	169,855 (69.07%)	25,594 (73.92%)	1,046,400 (72.12%)
Black or African American	112,236 (13.66%)	21,277 (11.37%)	22,255 (13.79%)	35,985 (14.63%)	4,024 (11.62%)	195,777 (13.49%)
Asian	19,791 (2.41%)	3,501 (1.87%)	2,913 (1.80%)	6,123 (2.49%)	748 (2.16%)	33,076 (2.28%)
Unknown	50,129 (6.10%)	12,799 (6.84%)	9,583 (5.94%)	17,632 (7.17%)	2,330 (6.73%)	92,473 (6.37%)
Native Hawaiian or Other Pacific Islander	2,434 (0.30%)	424 (0.23%)	543 (0.34%)	882 (0.36%)	133 (0.38%)	4,416 (0.30%)
American Indian or Alaska Native	5,586 (0.68%)	974 (0.52%)	1,473 (0.91%)	1,542 (0.63%)	286 (0.83%)	9,861 (0.68%)
Other Race	37,995 (4.62%)	8,591 (4.59%)	6,943 (4.30%)	13,888 (5.65%)	1,511 (4.36%)	68,928 (4.75%)
Ethnicity						
Hispanic or Latino	94,178 (11.46%)	21,983 (11.75%)	17,690 (10.96%)	31,780 (12.92%)	4,016 (11.60%)	169,647 (11.69%)
Not Hispanic or Latino	679,619 (82.69%)	154,199 (82.42%)	133,462 (82.68%)	197,516 (80.32%)	28,120 (81.21%)	1,192,916 (82.22%)
Unknown	48,093 (5.85%)	10,907 (5.83%)	10,267 (6.36%)	16,611 (6.75%)	2,490 (7.19%)	88,368 (6.09%)
Characteristics						
Type II Diabetes	385,444 (46.90%)	66,388 (35.48%)	86,852 (53.81%)	172,719 (70.24%)	25,132 (72.58%)	736,535 (50.76%)
Overweight or Obesity	576,015 (70.08%)	134,780 (72.04%)	98,821 (61.22%)	125,087 (50.87%)	16,531 (47.74%)	951,234 (65.56%)

Labeled Use						
ADM	435,909 (53.04%)	118,550 (63.37%)	83,473 (51.71%)	245,907 (100.00%)	34,626 (100.00%)	918,465 (63.30%)
AOM	148,275 (18.04%)	40,758 (21.79%)	36,776 (22.78%)	n/a	n/a	225,809 (15.56%)
Unknown	237,706 (28.92%)	27,781 (14.85%)	41,170 (25.51%)	n/a	n/a	306,657 (21.14%)
Year						
2018	6,479 (0.79%)	n/a	30,766 (19.06%)	17,594 (7.15%)	8,358 (24.14%)	63,197 (4.36%)
2019	20,179 (2.46%)	n/a	28,586 (17.71%)	22,350 (9.09%)	6,636 (19.16%)	77,751 (5.36%)
2020	31,747 (3.86%)	n/a	21,786 (13.50%)	25,086 (10.20%)	5,120 (14.79%)	83,739 (5.77%)
2021	64,442 (7.84%)	n/a	24,165 (14.97%)	39,368 (16.01%)	4,257 (12.29%)	132,232 (9.11%)
2022	148,782 (18.10%)	22,408 (11.98%)	24,869 (15.41%)	58,152 (23.65%)	4,429 (12.79%)	258,640 (17.83%)
2023	326,464 (39.72%)	61,406 (32.82%)	22,969 (14.23%)	59,953 (24.38%)	3,972 (11.47%)	474,764 (32.72%)
2024	223,797 (27.23%)	103,275 (55.20%)	8,278 (5.13%)	23,404 (9.52%)	1,854 (5.35%)	360,608 (24.85%)
Comorbidity						
Asthma	116,586 (14.19%)	26,714 (14.28%)	23,024 (14.26%)	27,334 (11.12%)	3,607 (10.42%)	197,265 (13.60%)
CKD	102,577 (12.48%)	15,445 (8.26%)	24,855 (15.40%)	43,708 (17.77%)	5,992 (17.30%)	192,577 (13.27%)
COPD	40,788 (4.96%)	6,730 (3.60%)	10,461 (6.48%)	16,906 (6.87%)	2,475 (7.15%)	77,360 (5.33%)
Hyperlipidemia	436,445 (53.10%)	88,960 (47.55%)	79,346 (49.16%)	132,830 (54.02%)	18,977 (54.81%)	756,558 (52.14%)
Hypertension	450,498 (54.81%)	90,553 (48.40%)	88,751 (54.98%)	144,366 (58.71%)	20,856 (60.23%)	795,024 (54.79%)
Major Depression	98,278 (11.96%)	21,017 (11.23%)	19,664 (12.18%)	21,333 (8.68%)	2,860 (8.26%)	163,152 (11.24%)

Prescribing over time

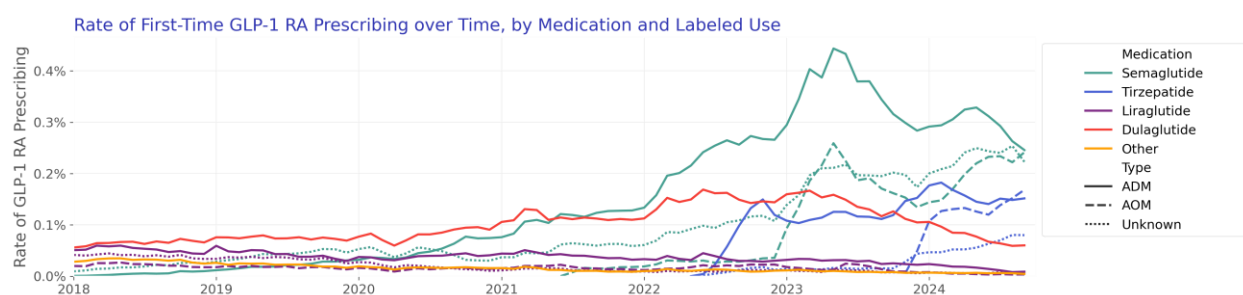
Overall

We describe the monthly rate of prescriptions by medication and FDA labeled use over time:



First-time

We describe the monthly rate of first-time prescriptions by medication and FDA labeled use over time.



Characteristics of patients by year of first GLP-1 RA use are as follows:

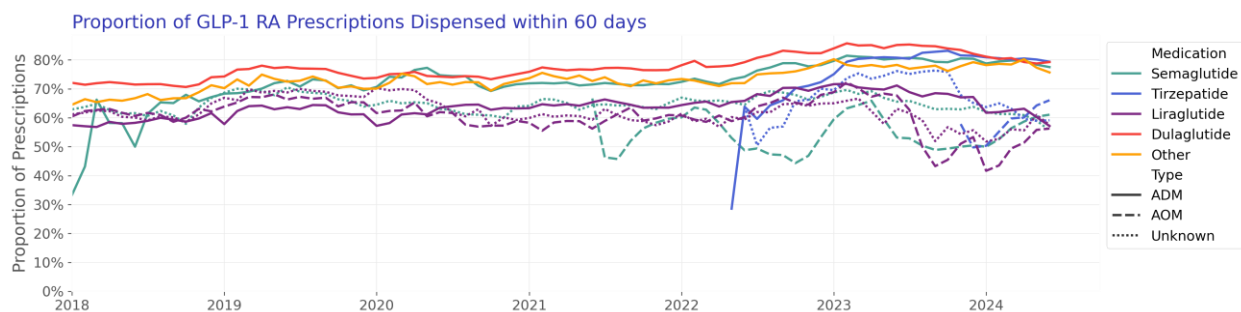
Table 2: Patient Characteristics by Year of First GLP-1 RA Prescription.

	2018	2019	2020	2021	2022	2023
N	63,197 (100.00%)	77,751 (100.00%)	83,739 (100.00%)	132,232 (100.00%)	258,640 (100.00%)	474,764 (100.00%)
Age Group						
18-44	10,415 (16.48%)	13,151 (16.91%)	14,776 (17.65%)	25,804 (19.51%)	61,484 (23.77%)	123,416 (26.00%)
45-64	34,219 (54.15%)	40,836 (52.52%)	43,400 (51.83%)	66,678 (50.43%)	129,339 (50.01%)	235,395 (49.58%)
65+	18,563 (29.37%)	23,764 (30.56%)	25,563 (30.53%)	39,750 (30.06%)	67,817 (26.22%)	115,953 (24.42%)
Sex						
Female	35,135 (55.60%)	42,821 (55.07%)	45,913 (54.83%)	76,846 (58.11%)	163,372 (63.17%)	312,966 (65.92%)
Male	28,062 (44.40%)	34,930 (44.93%)	37,826 (45.17%)	55,386 (41.89%)	95,268 (36.83%)	161,798 (34.08%)
Race						
White		48,175 (76.23%)	58,527 (75.27%)	61,626 (73.59%)	96,047 (72.64%)	186,577 (71.21%)
Black or African American		7,955 (12.59%)	9,499 (12.22%)	10,774 (12.87%)	17,439 (13.19%)	35,248 (13.63%)

Asian	1,191 (1.88%)	1,713 (2.20%)	2,076 (2.48%)	3,722 (2.81%)	6,112 (2.36%)	10,281 (2.17%)
Unknown	3,395 (5.37%)	4,300 (5.53%)	4,802 (5.73%)	7,365 (5.57%)	14,757 (5.71%)	30,964 (6.52%)
Native Hawaiian or Other Pacific Islander	167 (0.26%)	245 (0.32%)	297 (0.35%)	474 (0.36%)	884 (0.34%)	1,341 (0.28%)
American Indian or Alaska Native	444 (0.70%)	581 (0.75%)	618 (0.74%)	1,052 (0.80%)	1,894 (0.73%)	3,061 (0.64%)
Other Race	1,870 (2.96%)	2,886 (3.71%)	3,546 (4.23%)	6,133 (4.64%)	13,168 (5.09%)	23,959 (5.05%)
Ethnicity						
Hispanic or Latino	5,805 (9.19%)	7,889 (10.15%)	9,261 (11.06%)	15,582 (11.78%)	32,412 (12.53%)	55,746 (11.74%)
Not Hispanic or Latino	53,223 (84.22%)	64,909 (83.48%)	69,131 (82.56%)	108,533 (82.08%)	211,177 (81.65%)	390,456 (82.24%)
Unknown	4,169 (6.60%)	4,953 (6.37%)	5,347 (6.39%)	8,117 (6.14%)	15,051 (5.82%)	28,562 (6.02%)
Characteristics						
Type II Diabetes	46,445 (73.49%)	57,628 (74.12%)	60,059 (71.72%)	85,790 (64.88%)	135,229 (52.28%)	209,655 (44.16%)
Overweight or Obesity	38,319 (60.63%)	46,827 (60.23%)	48,511 (57.93%)	80,750 (61.07%)	164,252 (63.51%)	318,191 (67.02%)
Medication						
Semaglutide	6,479 (10.25%)	20,179 (25.95%)	31,747 (37.91%)	64,442 (48.73%)	148,782 (57.52%)	326,464 (68.76%)
Tirzepatide	n/a	n/a	n/a	n/a	22,408 (8.66%)	61,406 (12.93%)
Liraglutide	30,766 (48.68%)	28,586 (36.77%)	21,786 (26.02%)	24,165 (18.27%)	24,869 (9.62%)	22,969 (4.84%)
Dulaglutide	17,594 (27.84%)	22,350 (28.75%)	25,086 (29.96%)	39,368 (29.77%)	58,152 (22.48%)	59,953 (12.63%)
Other	8,358 (13.23%)	6,636 (8.53%)	5,120 (6.11%)	4,257 (3.22%)	4,429 (1.71%)	3,972 (0.84%)
Labeled Use						
ADM	41,370 (65.46%)	49,542 (63.72%)	60,198 (71.89%)	100,772 (76.21%)	195,337 (75.52%)	296,854 (62.53%)
AOM	5,939 (9.40%)	5,280 (6.79%)	4,387 (5.24%)	8,555 (6.47%)	18,899 (7.31%)	84,034 (17.70%)
Unknown	15,888 (25.14%)	22,929 (29.49%)	19,154 (22.87%)	22,905 (17.32%)	44,404 (17.17%)	93,876 (19.77%)
Comorbidity						
Asthma	7,196 (11.39%)	9,654 (12.42%)	10,291 (12.29%)	17,067 (12.91%)	33,982 (13.14%)	65,950 (13.89%)
CKD	10,212 (16.16%)	13,934 (17.92%)	15,723 (18.78%)	23,446 (17.73%)	35,240 (13.63%)	54,088 (11.39%)
COPD	4,161 (6.58%)	5,375 (6.91%)	5,711 (6.82%)	8,141 (6.16%)	13,112 (5.07%)	23,007 (4.85%)
Hyperlipidemia	38,145 (60.36%)	47,143 (60.63%)	48,661 (58.11%)	73,288 (55.42%)	131,223 (50.74%)	234,072 (49.30%)
Hypertension	40,691 (64.39%)	50,397 (64.82%)	51,757 (61.81%)	77,970 (58.96%)	139,050 (53.76%)	245,662 (51.74%)
Major Depression	6,176 (9.77%)	8,699 (11.19%)	9,332 (11.14%)	15,780 (11.93%)	29,794 (11.52%)	52,269 (11.01%)

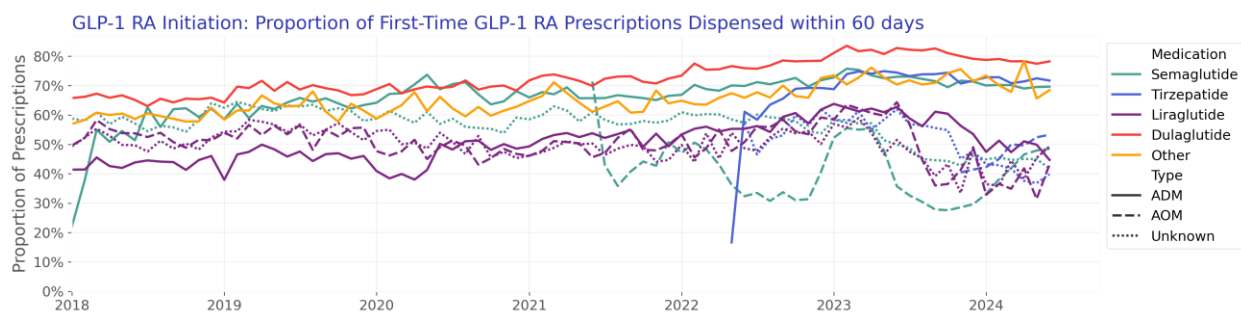
60-day dispensing over time

We describe the proportion of patients with any GLP-1 RA prescriptions (first-time and repeat) in a given month who filled any GLP-1 RA in the 60 days following their prescription.



60-day initiation over time

We describe the proportion of patients first-prescribed a GLP-1 RA who filled any GLP-1 RA in the subsequent 60 days over time.



Patient characteristics are given in Table 3:

Table 3: Patient Characteristics by Dispense Status. Dispense status refers to presence of any GLP-1 RA dispense within 60 days of first GLP-1 RA prescription. Table contains the subset of patients with observable 60-day dispense outcomes.

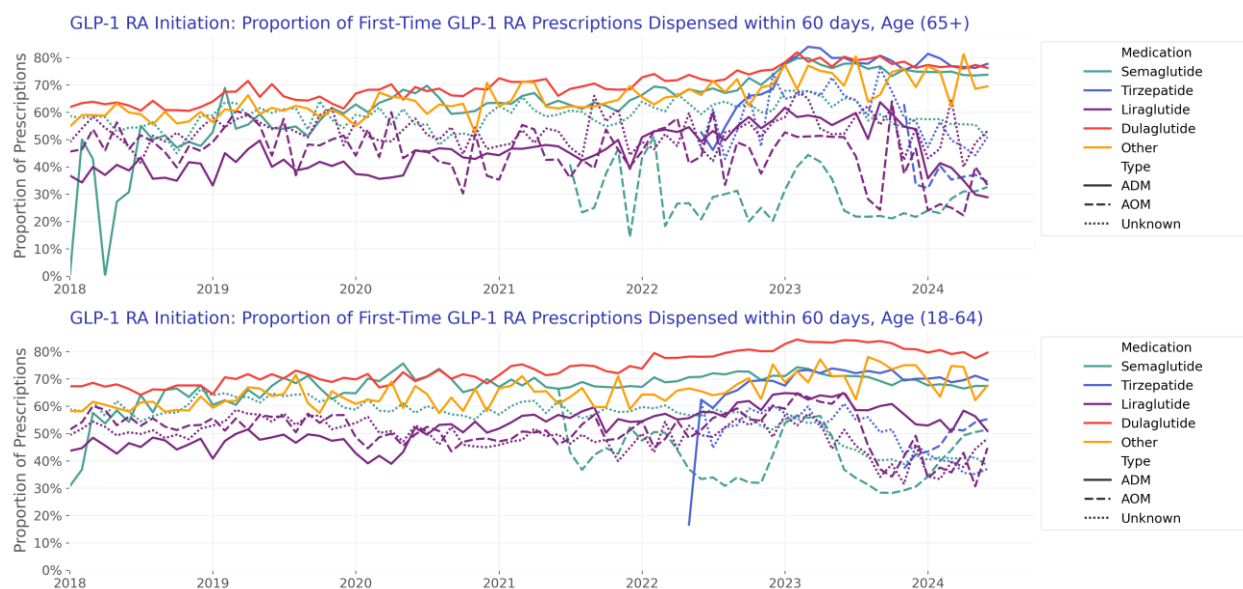
	Dispensed in 60 Days	Not Dispensed in 60 Days	Overall
N	841,630 (100.00%)	509,201 (100.00%)	1,350,831 (100.00%)
Age Group			
18-44	176,506 (20.97%)	142,062 (27.90%)	318,568 (23.58%)
45-64	431,760 (51.30%)	243,760 (47.87%)	675,520 (50.01%)
65+	233,364 (27.73%)	123,379 (24.23%)	356,743 (26.41%)

Sex			
Female	514,685 (61.15%)	335,672 (65.92%)	850,357 (62.95%)
Male	326,945 (38.85%)	173,529 (34.08%)	500,474 (37.05%)
Race			
White	601,445 (71.46%)	373,163 (73.28%)	974,608 (72.15%)
Black or African American	114,085 (13.56%)	68,888 (13.53%)	182,973 (13.55%)
Asian	20,835 (2.48%)	10,483 (2.06%)	31,318 (2.32%)
Unknown	54,607 (6.49%)	29,308 (5.76%)	83,915 (6.21%)
Native Hawaiian or Other Pacific Islander	2,714 (0.32%)	1,445 (0.28%)	4,159 (0.31%)
American Indian or Alaska Native	5,718 (0.68%)	3,511 (0.69%)	9,229 (0.68%)
Other Race	42,226 (5.02%)	22,403 (4.40%)	64,629 (4.78%)
Ethnicity			
Hispanic or Latino	98,241 (11.67%)	60,247 (11.83%)	158,488 (11.73%)
Not Hispanic or Latino	691,222 (82.13%)	420,461 (82.57%)	1,111,683 (82.30%)
Unknown	52,167 (6.20%)	28,493 (5.60%)	80,660 (5.97%)
Characteristics			
Type II Diabetes	488,320 (58.02%)	212,425 (41.72%)	700,745 (51.88%)
Overweight or Obesity	534,035 (63.45%)	365,872 (71.85%)	899,907 (66.62%)
Medication			
Semaglutide	458,348 (54.46%)	304,830 (59.86%)	763,178 (56.50%)
Tirzepatide	107,778 (12.81%)	58,513 (11.49%)	166,291 (12.31%)
Liraglutide	79,001 (9.39%)	75,803 (14.89%)	154,804 (11.46%)
Dulaglutide	175,339 (20.83%)	58,190 (11.43%)	233,529 (17.29%)
Other	21,164 (2.51%)	11,865 (2.33%)	33,029 (2.45%)
Labeled Use			
ADM	603,286 (71.68%)	264,632 (51.97%)	867,918 (64.25%)
AOM	92,706 (11.02%)	111,540 (21.90%)	204,246 (15.12%)
Unknown	145,638 (17.30%)	133,029 (26.13%)	278,667 (20.63%)
Year			
2018	34,293 (4.07%)	27,688 (5.44%)	61,981 (4.59%)
2019	45,501 (5.41%)	30,435 (5.98%)	75,936 (5.62%)
2020	49,878 (5.93%)	31,984 (6.28%)	81,862 (6.06%)
2021	82,467 (9.80%)	46,937 (9.22%)	129,404 (9.58%)
2022	166,347 (19.76%)	84,210 (16.54%)	250,557 (18.55%)
2023	289,751 (34.43%)	168,966 (33.18%)	458,717 (33.96%)
2024	173,393 (20.60%)	118,981 (23.37%)	292,374 (21.64%)
Comorbidity			
Asthma	111,752 (13.28%)	74,267 (14.59%)	186,019 (13.77%)
CKD	120,302 (14.29%)	64,508 (12.67%)	184,810 (13.68%)
COPD	47,280 (5.62%)	26,092 (5.12%)	73,372 (5.43%)

Hyperlipidemia	450,969 (53.58%)	265,682 (52.18%)	716,651 (53.05%)
Hypertension	469,036 (55.73%)	279,880 (54.96%)	748,916 (55.44%)
Major Depression	90,401 (10.74%)	65,636 (12.89%)	156,037 (11.55%)

By Age

As a proxy for Medicare insurance, we segment initiation rate by populations 65+ versus 18-64.



Patient characteristics for patients aged 65+ are given in Table 4:

Table 4: Patient Characteristics by Dispense Status, Age 65+. Dispense status refers to presence of any GLP-1 RA dispense within 60 days of first GLP-1 RA prescription. Table contains the subset of patients with observable 60-day dispense outcomes.

	Dispensed in 60 Days	Not Dispensed in 60 Days	Overall
N	233,364 (100.00%)	123,379 (100.00%)	356,743 (100.00%)
Age Group			
65+	233,364 (100.00%)	123,379 (100.00%)	356,743 (100.00%)
Sex			
Female	128,593 (55.10%)	67,997 (55.11%)	196,590 (55.11%)
Male	104,771 (44.90%)	55,382 (44.89%)	160,153 (44.89%)

Race			
White	181,910 (77.95%)	99,027 (80.26%)	280,937 (78.75%)
Black or African American	22,233 (9.53%)	11,496 (9.32%)	33,729 (9.45%)
Asian	4,960 (2.13%)	2,109 (1.71%)	7,069 (1.98%)
Unknown	14,122 (6.05%)	6,671 (5.41%)	20,793 (5.83%)
Native Hawaiian or Other Pacific Islander	375 (0.16%)	187 (0.15%)	562 (0.16%)
American Indian or Alaska Native	1,239 (0.53%)	589 (0.48%)	1,828 (0.51%)
Other Race	8,525 (3.65%)	3,300 (2.67%)	11,825 (3.31%)
Ethnicity			
Hispanic or Latino	17,520 (7.51%)	8,177 (6.63%)	25,697 (7.20%)
Not Hispanic or Latino	200,515 (85.92%)	107,437 (87.08%)	307,952 (86.32%)
Unknown	15,329 (6.57%)	7,765 (6.29%)	23,094 (6.47%)
Characteristics			
Type II Diabetes	162,621 (69.69%)	77,801 (63.06%)	240,422 (67.39%)
Overweight or Obesity	140,822 (60.34%)	77,758 (63.02%)	218,580 (61.27%)
Medication			
Semaglutide	125,778 (53.90%)	66,865 (54.19%)	192,643 (54.00%)
Tirzepatide	20,177 (8.65%)	8,503 (6.89%)	28,680 (8.04%)
Liraglutide	18,728 (8.03%)	20,603 (16.70%)	39,331 (11.03%)
Dulaglutide	60,268 (25.83%)	22,812 (18.49%)	83,080 (23.29%)
Other	8,413 (3.61%)	4,596 (3.73%)	13,009 (3.65%)
Labeled Use			
ADM	184,243 (78.95%)	80,178 (64.99%)	264,421 (74.12%)
AOM	7,795 (3.34%)	14,214 (11.52%)	22,009 (6.17%)
Unknown	41,326 (17.71%)	28,987 (23.49%)	70,313 (19.71%)
Year			
2018	9,449 (4.05%)	8,689 (7.04%)	18,138 (5.08%)
2019	13,261 (5.68%)	9,800 (7.94%)	23,061 (6.46%)
2020	14,691 (6.30%)	10,117 (8.20%)	24,808 (6.95%)
2021	24,207 (10.37%)	14,476 (11.73%)	38,683 (10.84%)
2022	43,496 (18.64%)	21,383 (17.33%)	64,879 (18.19%)
2023	79,069 (33.88%)	32,574 (26.40%)	111,643 (31.30%)
2024	49,191 (21.08%)	26,340 (21.35%)	75,531 (21.17%)
Comorbidity			
Asthma	27,183 (11.65%)	14,985 (12.15%)	42,168 (11.82%)
CKD	70,221 (30.09%)	37,907 (30.72%)	108,128 (30.31%)
COPD	23,387 (10.02%)	13,346 (10.82%)	36,733 (10.30%)
Hyperlipidemia	155,738 (66.74%)	87,739 (71.11%)	243,477 (68.25%)
Hypertension	163,693 (70.14%)	93,117 (75.47%)	256,810 (71.99%)
Major Depression	24,308 (10.42%)	13,802 (11.19%)	38,110 (10.68%)

Patient characteristics for patients aged 18-65 are given in Table 5:

Table 5: Patient Characteristics by Dispense Status, Age 18-64. Dispense status refers to presence of any GLP-1 RA dispense within 60 days of first GLP-1 RA prescription. Table contains the subset of patients with observable 60-day dispense outcomes.

	Dispensed in 60 Days	Not Dispensed in 60 Days	Overall
N	608,266 (100.00%)	385,822 (100.00%)	994,088 (100.00%)
Age Group			
18-44	176,506 (29.02%)	142,062 (36.82%)	318,568 (32.05%)
45-64	431,760 (70.98%)	243,760 (63.18%)	675,520 (67.95%)
Sex			
Female	386,092 (63.47%)	267,675 (69.38%)	653,767 (65.77%)
Male	222,174 (36.53%)	118,147 (30.62%)	340,321 (34.23%)
Race			
White	419,535 (68.97%)	274,136 (71.05%)	693,671 (69.78%)
Black or African American	91,852 (15.10%)	57,392 (14.88%)	149,244 (15.01%)
Asian	15,875 (2.61%)	8,374 (2.17%)	24,249 (2.44%)
Unknown	40,485 (6.66%)	22,637 (5.87%)	63,122 (6.35%)
Native Hawaiian or Other Pacific Islander	2,339 (0.38%)	1,258 (0.33%)	3,597 (0.36%)
American Indian or Alaska Native	4,479 (0.74%)	2,922 (0.76%)	7,401 (0.74%)
Other Race	33,701 (5.54%)	19,103 (4.95%)	52,804 (5.31%)
Ethnicity			
Hispanic or Latino	80,721 (13.27%)	52,070 (13.50%)	132,791 (13.36%)
Not Hispanic or Latino	490,707 (80.67%)	313,024 (81.13%)	803,731 (80.85%)
Unknown	36,838 (6.06%)	20,728 (5.37%)	57,566 (5.79%)
Characteristics			
Type II Diabetes	325,699 (53.55%)	134,624 (34.89%)	460,323 (46.31%)
Overweight or Obesity	393,213 (64.64%)	288,114 (74.68%)	681,327 (68.54%)

Medication			
Semaglutide	332,570 (54.68%)	237,965 (61.68%)	570,535 (57.39%)
Tirzepatide	87,601 (14.40%)	50,010 (12.96%)	137,611 (13.84%)
Liraglutide	60,273 (9.91%)	55,200 (14.31%)	115,473 (11.62%)
Dulaglutide	115,071 (18.92%)	35,378 (9.17%)	150,449 (15.13%)
Other	12,751 (2.10%)	7,269 (1.88%)	20,020 (2.01%)
Labeled Use			
ADM	419,043 (68.89%)	184,454 (47.81%)	603,497 (60.71%)
AOM	84,911 (13.96%)	97,326 (25.23%)	182,237 (18.33%)
Unknown	104,312 (17.15%)	104,042 (26.97%)	208,354 (20.96%)
Year			
2018	24,844 (4.08%)	18,999 (4.92%)	43,843 (4.41%)
2019	32,240 (5.30%)	20,635 (5.35%)	52,875 (5.32%)
2020	35,187 (5.78%)	21,867 (5.67%)	57,054 (5.74%)
2021	58,260 (9.58%)	32,461 (8.41%)	90,721 (9.13%)
2022	122,851 (20.20%)	62,827 (16.28%)	185,678 (18.68%)
2023	210,682 (34.64%)	136,392 (35.35%)	347,074 (34.91%)
2024	124,202 (20.42%)	92,641 (24.01%)	216,843 (21.81%)
Comorbidity			
Asthma	84,569 (13.90%)	59,282 (15.37%)	143,851 (14.47%)
CKD	50,081 (8.23%)	26,601 (6.89%)	76,682 (7.71%)
COPD	23,893 (3.93%)	12,746 (3.30%)	36,639 (3.69%)
Hyperlipidemia	295,231 (48.54%)	177,943 (46.12%)	473,174 (47.60%)
Hypertension	305,343 (50.20%)	186,763 (48.41%)	492,106 (49.50%)
Major Depression	66,093 (10.87%)	51,834 (13.43%)	117,927 (11.86%)

Discussion and Conclusion

This analysis summarized GLP-1 RA prescribing trends and patient characteristics from January 2018 to September 2024. During this period 1,449,442 patients were prescribed a total of 6,341,367 prescriptions. ADMs accounted for 83.8% of prescriptions, and AOMs accounted for 16.2%, among prescriptions where use was known. A larger proportion of ADMs, compared to AOMs, were dispensed within 60 days: 69.5% of first-time ADM prescriptions and 45.4% of first-time AOM prescriptions had a fill within 60 days.

Several limitations of our analysis should be noted. All data are preliminary and may change as additional data are obtained. These findings are consistent with data accessed October 08, 2024. Data presented in this analysis represent raw counts and/or rates, and post-stratification methods have not been conducted. In addition,

cohorts with small counts may be suppressed during the de-identification process leading to the appearance of zero patients for a given time period. Given relatively large numbers of patients prescribed and dispensed GLP-1 RA, we do not expect substantial suppression in the most recent periods. The unknowns in this report either indicate the value was not included in the individual's electronic health record or that it was excluded from the data to protect an individual's identity as a part of Truveta's commitment to privacy (Truveta, 2024). Finally, this report is a description of prescribing trends and patient characteristics only. Results should not be interpreted as causal.

References

Truveta. (2024). Truveta's Approach to Patient Privacy.

<https://resources.truveta.com/patient-privacy>

Centers for disease control and prevention. "National diabetes statistics report". 2020.

<https://www.cdc.gov/diabetes/data/statistics-report/index.html>.

Davies, Melanie J., et al. "Efficacy of liraglutide for weight loss among patients with type 2 diabetes: the SCALE diabetes randomized clinical trial." *JAMA* 314.7 (2015): 687-699.

Davies, Melanie, et al. "Semaglutide 2· 4 mg once a week in adults with overweight or obesity, and type 2 diabetes (STEP 2): a randomised, double-blind, double-dummy, placebo-controlled, phase 3 trial." *The Lancet* 397.10278 (2021): 971-984.

Hales, Craig M., et al. "Prevalence of obesity and severe obesity among adults: United States, 2017–2018. NCHS Data Brief, no 360." *National Center for Health Statistics* 360 (2020): 1-7.

Han, Sabrina H., et al. "Public interest in the off-label use of glucagon-like peptide 1 agonists (Ozempic) for cosmetic weight loss: a google trends analysis." *Aesthetic Surgery Journal* 44.1 (2024): 60-67.

Garvey, W. Timothy, et al. "Tirzepatide once weekly for the treatment of obesity in people with type 2 diabetes (SURMOUNT-2): a double-blind, randomised, multicentre, placebo-controlled, phase 3 trial." *The Lancet* (2023).

Jastreboff, Ania M., et al. "Tirzepatide once weekly for the treatment of obesity." *New England Journal of Medicine* 387.3 (2022): 205-216.

Lincoff, A. Michael, et al. "Semaglutide and cardiovascular outcomes in obesity without diabetes." *New England Journal of Medicine* 389.24 (2023): 2221-2232.

Ussher, John R., and Daniel J. Drucker. "Glucagon-like peptide 1 receptor agonists: cardiovascular benefits and mechanisms of action." *Nature Reviews Cardiology* 20.7 (2023): 463-474.

Wilding, John PH, et al. "Once-weekly semaglutide in adults with overweight or obesity." *New England Journal of Medicine* 384.11 (2021): 989-1002.

Whitley, Heather P., Jennifer M. Trujillo, and Joshua J. Neumiller. "Potential Strategies for Addressing GLP-1 and Dual GLP-1/GIP Receptor Agonist Shortages." *Clinical Diabetes* (2023): cd230023.

Yeh, Tzu-Lin, et al. "Effect of glucagon-like peptide-1 receptor agonists on glycemic control, and weight reduction in adults: A multivariate meta-analysis." *PLOS One* 18.1 (2023): e0278685.

Acknowledgements

The authors thank Dr. Ty Gluckman for his contributions and feedback on describing GLP-1 RA prescribing trends.