

Monitoring Report: GLP-1 RA Prescribing Trends - June 2024 Data

Samuel Gratzl, PhD*

Patricia J Rodriguez, PhD, MPH*

Brianna M Goodwin Cartwright, MS

Charlotte Baker, DrPH, MPH, CPH

Nicholas L Stucky, MD, PhD

* Denotes co-first author

Affiliations: All authors are affiliated with Truveta, Inc.

Corresponding author:

Dr Nicholas Stucky

Truveta, Inc

1745 114th Ave SE, Bellevue, WA 98004

Email: nicholass@truveta.com

Abstract

Background: Limited recent data exist on prescribing patterns and patient characteristics for glucagon-like peptide 1 receptor agonists (GLP-1 RAs), an important drug class used as anti-diabetic medication (ADM) for patients with type 2 diabetes mellitus (T2D) and/or anti-obesity medication (AOM) in patients with overweight or obesity.

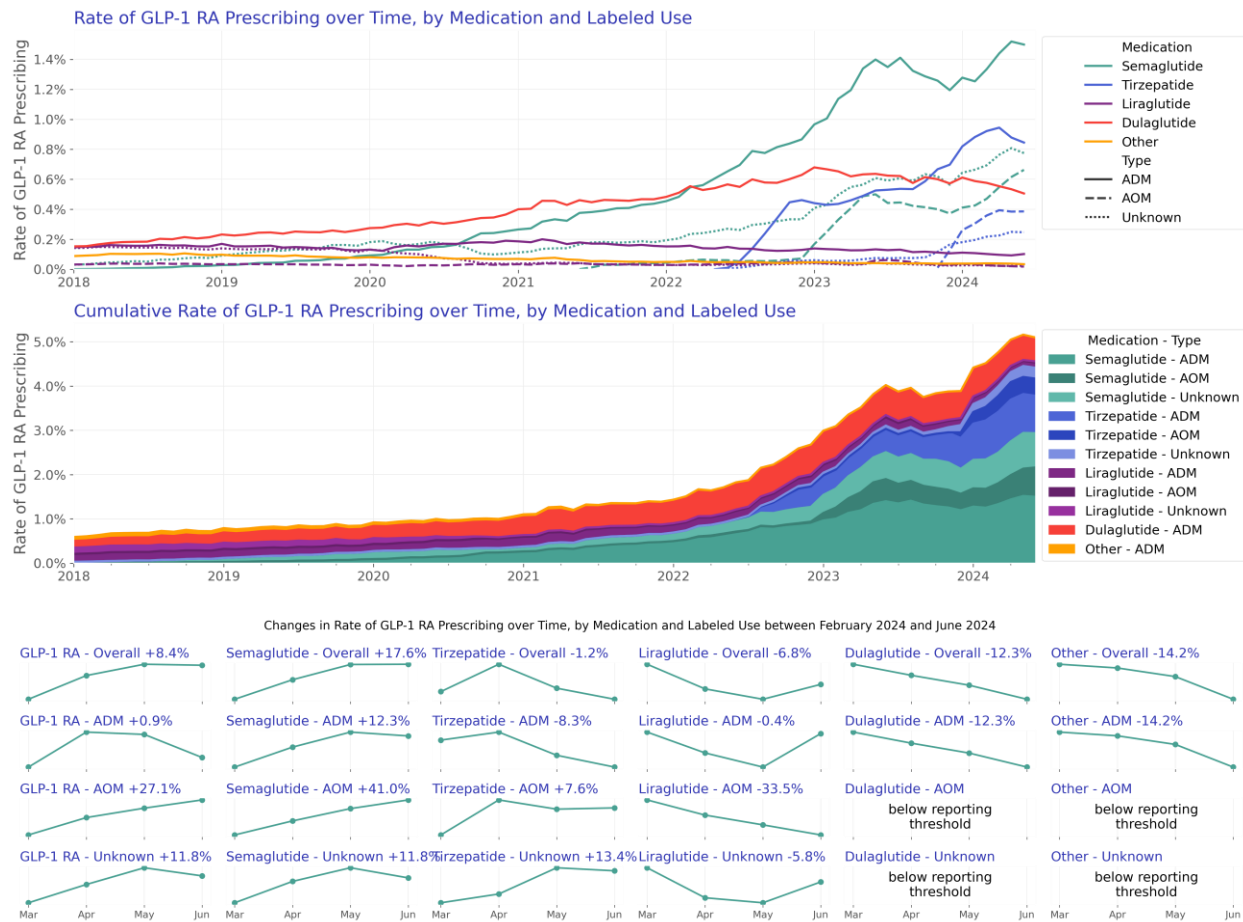
For brevity, we use the term GLP-1 RA to refer to both GLP-1 RA and dual GLP-1 RA/GIP medications.

Objective: To describe recent trends in prescribing and dispensing of GLP-1-based medications in the US.

Methods: Using a subset of real-world electronic health record (EHR) data from Truveta, a growing collective of health systems that provide more than 18% of all daily clinical care in the US, we identified people who were prescribed a GLP-1-based medication between January 01, 2018 and June 30, 2024. We describe prescribing volumes and patient characteristics over time, by medication, and by FDA-labeled use. Among the subset of patients for whom post-prescription dispensing data is available, we describe the proportion and characteristics of patients who were and were not dispensed a GLP-1 RA following their prescription.

Results: 1,162,662 patients were prescribed a GLP-1 RA between January 2018 and June 2024, with 4,815,135 total prescriptions during this period. Among first-time prescriptions for which use could be established, ADMs accounted for 83.0% and AOMs accounted for 17.0%. The most common first-time medication was semaglutide (n = 644,272). Among those with available data, 70.0% of first-time ADM prescriptions overall and 73.7% in March 2024 had a fill within 60 days. By comparison, 43.6% of first-time AOM prescriptions overall and 47.2% in March 2024 had a fill within 60 days.

Trends in Prescribing

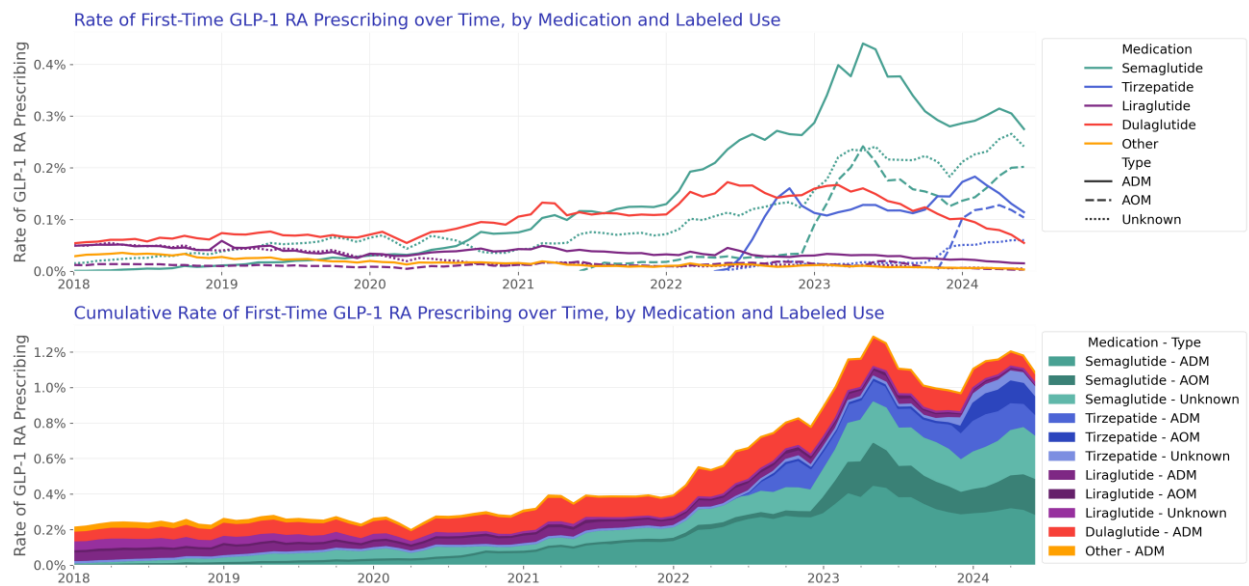


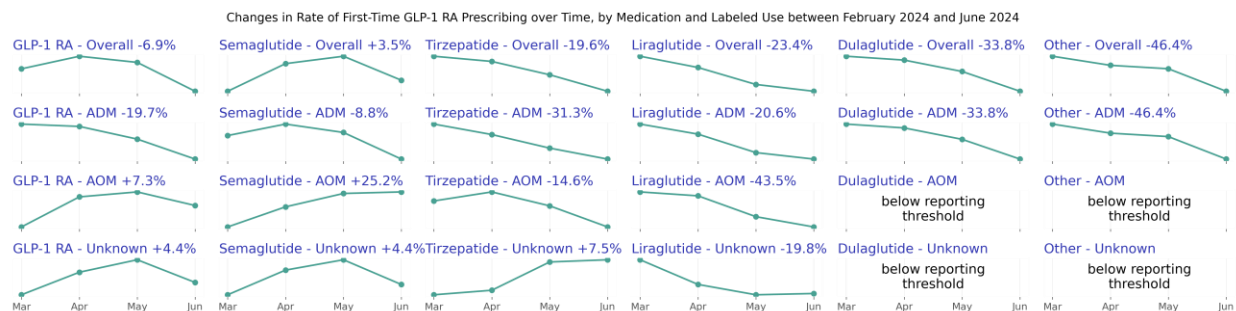
	GLP-1 RA	Semaglutide	Tirzepatide	Liraglutide	Dulaglutide	Other
Overall						
March 2024	4.41%	2.42%	1.43%	0.15%	0.58%	0.04%
June 2024	4.78%	2.84%	1.41%	0.14%	0.51%	0.03%
Change (percentage)	+8.43%	+17.64%	-1.15%	-6.81%	-12.27%	-14.16%
Difference (percentage points)	+0.37%	+0.43%	-0.02%	-0.01%	-0.07%	-0.01%
ADM						
March 2024	2.89%	1.33%	0.92%	0.10%	0.58%	0.04%
June 2024	2.92%	1.50%	0.85%	0.10%	0.51%	0.03%
Change (percentage)	+0.92%	+12.32%	-8.31%	-0.39%	-12.27%	-14.16%
Difference (percentage points)	+0.03%	+0.16%	-0.08%	-0.00%	-0.07%	-0.01%
AOM						
March 2024	0.82%	0.47%	0.36%	0.03%	n/a	n/a
June 2024	1.05%	0.66%	0.39%	0.02%	n/a	n/a
Change (percentage)	+27.10%	+40.97%	+7.64%	-33.52%		
Difference (percentage points)	+0.22%	+0.19%	+0.03%	-0.01%		

Unknown						
March 2024	0.93%	0.69%	0.22%	0.03%	n/a	n/a
June 2024	1.04%	0.77%	0.25%	0.02%	n/a	n/a
Change (percentage)	+11.81%	+11.76%	+13.36%	-5.75%		
Difference (percentage points)	+0.11%	+0.08%	+0.03%	-0.00%		

- Overall prescribing rates (GLP-1 RA prescriptions per total prescriptions) in June 2024 increased slightly relative to March 2024 (+8.43%).
- Month-over-month ADM prescribing increased in April and May 2024 then decreased slightly in June 2024. ADM prescribing in June 2024 remained approximately the same as March 2024 (+0.92%).
- Among ADMs, semaglutide was the most prescribed medication. In late 2023, tirzepatide surpassed dulaglutide as the second most commonly prescribed ADM.
- AOM prescribing increased in June 2024 compared to March 2024 (+27.1%)
- Semaglutide was the most commonly prescribed AOM, followed by AOM tirzepatide. Prescribing of AOM tirzepatide was observed in the first month of availability in pharmacies, December 2023.

Trends in First-Time Prescribing

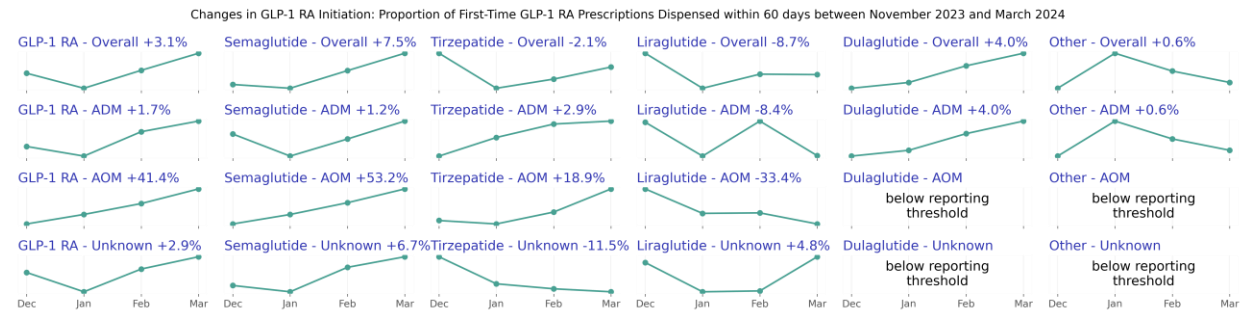
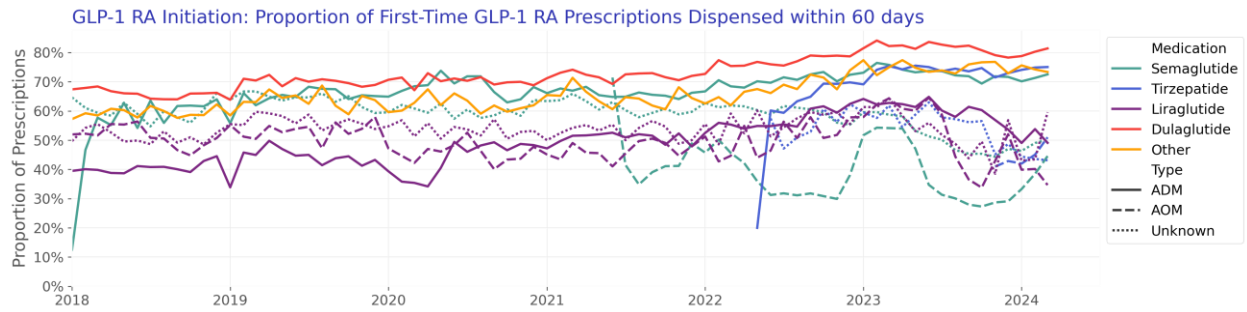




	GLP-1 RA	Semaglutide	Tirzepatide	Liraglutide	Dulaglutide	Other
Overall						
March 2024	1.15%	0.69%	0.34%	0.03%	0.08%	0.01%
June 2024	1.07%	0.72%	0.27%	0.02%	0.05%	0.00%
Change (percentage)	-6.90%	+3.48%	-19.60%	-23.45%	-33.80%	-46.45%
Difference (percentage points)	-0.08%	+0.02%	-0.07%	-0.01%	-0.03%	-0.00%
ADM						
March 2024	0.58%	0.30%	0.17%	0.02%	0.08%	0.01%
June 2024	0.46%	0.28%	0.11%	0.02%	0.05%	0.00%
Change (percentage)	-19.71%	-8.33%	-31.29%	-20.58%	-33.80%	-46.45%
Difference (percentage points)	-0.11%	-0.03%	-0.05%	-0.00%	-0.03%	-0.00%
AOM						
March 2024	0.29%	0.16%	0.12%	0.00%	n/a	n/a
June 2024	0.31%	0.20%	0.10%	0.00%	n/a	n/a
Change (percentage)	+7.26%	+25.23%	-14.63%	-43.46%		
Difference (percentage points)	+0.02%	+0.04%	-0.02%	-0.00%		
Unknown						
March 2024	0.29%	0.23%	0.06%	0.01%	n/a	n/a
June 2024	0.31%	0.24%	0.06%	0.01%	n/a	n/a
Change (percentage)	+4.44%	+4.36%	+7.54%	-19.81%		
Difference (percentage points)	+0.01%	+0.01%	+0.00%	-0.00%		

- First-time prescribing rates (first-time GLP-1 RA prescriptions per total prescriptions) in June 2024 were slightly lower than rates in March 2024 (-6.90%).
- First-time prescribing of ADMs decreased in June 2024, relative to March 2024 (-19.71%).
- First-time prescribing of AOMs increased slightly in June 2024, compared to March 2024 (+7.26%).
- While overall prescribing of semaglutide increased throughout second quarter of 2024, first-time prescribing of semaglutide slowed from 0.9% of prescriptions in May 2024 to 0.7% in June 2024. Similar declines were observed for ADM, AOM, and unknown semaglutide. New prescribing of tirzepatide decreased in each of the 3 months over the last quarter.

Trends in Dispensing



	GLP-1 RA	Semaglutide	Tirzepatide	Liraglutide	Dulaglutide	Other
Overall						
December 2023	59.33%	54.82%	63.05%	54.13%	78.26%	72.88%
March 2024	61.17%	58.93%	61.70%	49.44%	81.40%	73.33%
Change (percentage)	+3.09%	+7.50%	-2.15%	-8.66%	+4.01%	+0.62%
Difference (percentage points)	+1.83%	+4.11%	-1.35%	-4.69%	+3.14%	+0.45%
ADM						
December 2023	72.47%	71.64%	72.95%	53.62%	78.26%	72.88%
March 2024	73.72%	72.52%	75.03%	49.09%	81.40%	73.33%
Change (percentage)	+1.72%	+1.23%	+2.85%	-8.45%	+4.01%	+0.62%
Difference (percentage points)	+1.24%	+0.88%	+2.08%	-4.53%	+3.14%	+0.45%
AOM						
December 2023	33.39%	29.09%	42.87%	52.02%	n/a	n/a
March 2024	47.22%	44.56%	50.99%	34.65%	n/a	n/a
Change (percentage)	+41.41%	+53.22%	+18.94%	-33.39%		
Difference (percentage points)	+13.83%	+15.48%	+8.12%	-17.37%		
Unknown						
December 2023	47.58%	47.02%	48.71%	56.83%	n/a	n/a
March 2024	48.96%	50.19%	43.11%	59.56%	n/a	n/a
Change (percentage)	+2.90%	+6.73%	-11.50%	+4.79%		
Difference (percentage points)	+1.38%	+3.16%	-5.60%	+2.72%		

- During the full time period, 73.7% of GLP-1 RA prescriptions had a dispense within 60 days of their prescription (e.g., were initiated within 60 days).

- For patients first prescribed an ADM in March 2024, 73.7% filled a GLP-1 RA within 60 days. Initiation rates for ADM GLP-1 RA increased slightly in March 2024, relative to December 2023 (+1.72%).
- For patients first prescribed an AOM in March 2024, 47.2% filled a GLP-1 RA within 60 days. Initiation rates for AOM GLP-1 RA increased substantially in March 2024, relative to December 2023 (+41.41%).

About this report

This report provides recent trends in the prescribing and dispensing of glucagon-like peptide-1 receptor agonist (GLP-1 RAs)-based medications, including dual GLP-1 RA/gastric inhibitory polypeptide (GIP) over time, by medication, and by FDA-labeled use. We used near real-time, aggregated electronic health record (EHR) data from a collective of US healthcare systems to describe prescribing and dispensing of GLP-1 RA medications from January 2018 to June 2024.

Introduction

Obesity and type 2 diabetes mellitus (T2D) are interconnected epidemics with a high prevalence and individual and combined negative impacts on health (CDC, 2020, Hales, 2020). Glucagon-like peptide-1 receptor agonist (GLP-1 RAs) -based medications, including dual GLP-1 RA/gastric inhibitory polypeptide (GIP), have been shown to improve glycemic control in patients with T2D and reduce weight in patients with and without T2D (Davies, 2015, Davies, 2021, Garvey, 2023, Jastreboff, 2022, Wilding, 2023, Yeh, 2023). GLP-1 RA have also demonstrated cardiovascular benefit in patients with and without T2D (Lincoff, 2023, Ussher, 2023).

Interest in these medications has recently accelerated, largely for their weight-loss effects; however, limited empiric data exist on prescribing, dispensing, and patient characteristics. Access to and use of GLP-1 RA may be impacted by high cost, limited insurance coverage for patients without T2D and medication shortages.

Methods

Data

We evaluated prescribing and dispensing of GLP-1 RAs between January 2018 and June 2024 using a subset of Truveta Data. Truveta provides access to continuously updated, linked, and de-identified electronic health record (EHR) from a collective of US health

care systems that provide 18% of all daily clinical care in the US, including structured information on demographics, encounters, diagnoses, vital signs (e.g., weight, BMI, blood pressure), medication requests (prescriptions), medication administration, laboratory and diagnostic tests and results (e.g., HbA1c tests and values), and procedures. Updated EHR data are provided daily to Truveta by member health care systems. In addition to EHR data for care delivered within Truveta member health care systems, medication dispensing and social drivers of health (SDOH) information are made available through linked third-party data. Medication dispense (via e-prescribing data) includes fills for prescriptions written both within and outside Truveta member health care systems, providing greater observability into patients' medication history. Medication dispense histories are updated at the time of the encounter, and include fill dates, NDC or RxNorm codes, quantity dispensed, and days of medication supplied. SDOH data include individual-level factors, including income and education.

Population

We identified GLP-1 RA prescriptions (medication requests) and dispenses among adults using RxNorm and NDC codes for dulaglutide, exenatide, liraglutide, lixisenatide, semaglutide, and tirzepatide. Exenatide and lixisenatide were grouped as 'other' given small relative sizes. Brands were identified when possible using RxNorm and NDC codes. Brands labeled for treatment of T2D were classified as ADMs and brands labeled for treatment of overweight and obesity were classified as AOMs. When brand could not be established, the labeled use was classified as unknown.

Prescribing Analysis

Characteristics of patients ever prescribed a GLP-1 RA were summarized, including demographics, social drivers of health (SDOH), and presence of T2D and/or overweight or obesity. Characteristics are provided by medication and by year of first prescription.

Overall and first-time prescribing rates of GLP-1 RA were summarized over time by medication and labeled use. The prescribing rate was calculated monthly as the number of patients with a GLP-1 RA prescription divided by the number of patients with any prescription in the month. Absolute differences and percentage changes in the rate of GLP-1 RA prescribing over the most recent 3-month period were summarized overall and by medication and labeled use.

Dispensing Analysis

We describe the proportion of GLP-1 RA prescriptions (overall and first-time) with a dispense occurring within 60 days. Dispensing analyses were restricted to prescriptions for which complete 60-day dispensing outcomes could be observed.

Dispensing outcomes were considered observable if (1) a dispense was recorded in the 60 days following the prescription, and/or (2) an encounter took place after the 60-day period ended (at which time any dispenses would be observed). To allow sufficient follow-up, we report dispensing with a 90-day delay. Given shortages and expected substitutions at the pharmacy, we considered the dispense of any GLP-1 RA, which could differ from the prescribed GLP-1 RA.

We plot the proportion of prescriptions (overall and first-time) dispensed within 60 days over time, by medication and use. Differences in dispensing were expected between ADMs and AOMs given ADMs are typically covered by insurance, whereas insurance coverage for AOMs is limited. As such, we provide dispensing rates stratified by FDA labeled use. Further, we stratify dispensing by age 65+ vs. 18-64 as a proxy for Medicare coverage. Medicare never provides coverage for AOMs, whereas commercial insurers may.

Results

Overall population

The demographics of patients by first-prescribed medication are as follows:

Table 1: Patient Characteristics by First-Prescribed GLP-1 RA Medication.

	Semaglutide	Tirzepatide	Liraglutide	Dulaglutide	Other	Overall
N	644,272 (100.00%)	132,789 (100.00%)	129,601 (100.00%)	203,299 (100.00%)	29,337 (100.00%)	1,139,298 (100.00%)
Age Group						
18-44	163,785 (25.42%)	42,131 (31.73%)	32,857 (25.35%)	28,244 (13.89%)	3,517 (11.99%)	270,534 (23.75%)
45-64	319,882 (49.65%)	68,908 (51.89%)	62,677 (48.36%)	102,380 (50.36%)	14,235 (48.52%)	568,082 (49.86%)
65+	160,605 (24.93%)	21,750 (16.38%)	34,067 (26.29%)	72,675 (35.75%)	11,585 (39.49%)	300,682 (26.39%)
Sex						
Female	414,601 (64.35%)	91,892 (69.20%)	83,183 (64.18%)	109,161 (53.69%)	15,516 (52.89%)	714,353 (62.70%)
Male	229,649 (35.64%)	40,896 (30.80%)	46,416 (35.81%)	94,133 (46.30%)	13,819 (47.10%)	424,913 (37.30%)
Other	22 (0.00%)	1 (0.00%)	2 (0.00%)	5 (0.00%)	2 (0.01%)	32 (0.00%)

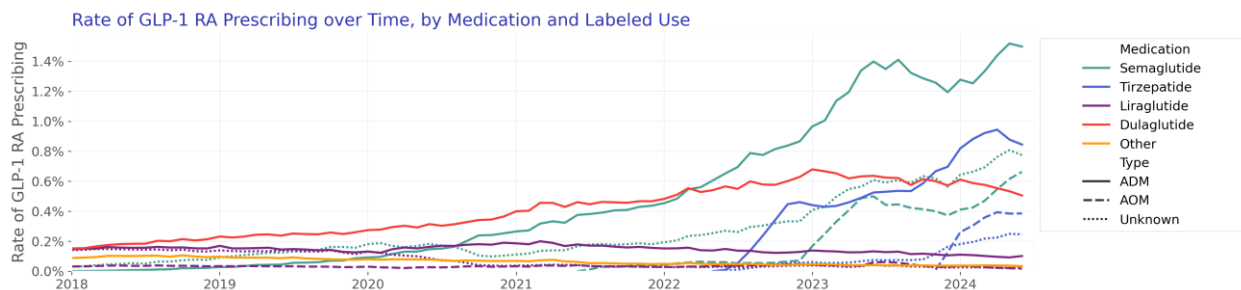
Race						
White	467,924 (72.63%)	97,310 (73.28%)	95,075 (73.36%)	140,512 (69.12%)	21,626 (73.72%)	822,447 (72.19%)
Black or African American	80,350 (12.47%)	14,652 (11.03%)	16,888 (13.03%)	27,806 (13.68%)	3,400 (11.59%)	143,096 (12.56%)
Asian	15,832 (2.46%)	2,355 (1.77%)	2,368 (1.83%)	5,177 (2.55%)	663 (2.26%)	26,395 (2.32%)
Unknown	34,098 (5.29%)	9,308 (7.01%)	6,300 (4.86%)	12,893 (6.34%)	1,596 (5.44%)	64,195 (5.63%)
Native Hawaiian or Other Pacific Islander	1,947 (0.30%)	261 (0.20%)	448 (0.35%)	696 (0.34%)	102 (0.35%)	3,454 (0.30%)
American Indian or Alaska Native	4,259 (0.66%)	685 (0.52%)	1,180 (0.91%)	1,197 (0.59%)	248 (0.85%)	7,569 (0.66%)
Other Race	32,306 (5.01%)	6,603 (4.97%)	6,265 (4.83%)	12,698 (6.25%)	1,428 (4.87%)	59,300 (5.20%)
Declined to answer	7,556 (1.17%)	1,615 (1.22%)	1,077 (0.83%)	2,320 (1.14%)	274 (0.93%)	12,842 (1.13%)
Ethnicity						
Hispanic or Latino	77,699 (12.06%)	16,231 (12.22%)	14,656 (11.31%)	26,704 (13.14%)	3,316 (11.30%)	138,606 (12.17%)
Not Hispanic or Latino	524,509 (81.41%)	107,627 (81.05%)	105,828 (81.66%)	160,368 (78.88%)	23,639 (80.58%)	921,971 (80.92%)
Unknown	33,540 (5.21%)	6,976 (5.25%)	7,887 (6.09%)	13,617 (6.70%)	2,076 (7.08%)	64,096 (5.63%)
Declined to answer	8,524 (1.32%)	1,955 (1.47%)	1,230 (0.95%)	2,610 (1.28%)	306 (1.04%)	14,625 (1.28%)
Characteristics						
Type II Diabetes	309,255 (48.00%)	49,411 (37.21%)	70,327 (54.26%)	141,770 (69.73%)	21,343 (72.75%)	592,106 (51.97%)
Overweight or Obesity	444,477 (68.99%)	94,995 (71.54%)	77,955 (60.15%)	101,287 (49.82%)	13,909 (47.41%)	732,623 (64.30%)
Labeled Use						
ADM	330,041 (51.23%)	91,531 (68.93%)	67,812 (52.32%)	203,299 (100.00%)	29,337 (100.00%)	722,020 (63.37%)
AOM	103,733 (16.10%)	21,849 (16.45%)	22,589 (17.43%)	n/a	n/a	148,171 (13.01%)
Unknown	210,498 (32.67%)	19,409 (14.62%)	39,200 (30.25%)	n/a	n/a	269,107 (23.62%)
Year						
2018	7,026 (1.09%)	n/a	24,862 (19.18%)	13,927 (6.85%)	7,212 (24.58%)	53,027 (4.65%)
2019	19,192 (2.98%)	n/a	23,168 (17.88%)	17,957 (8.83%)	5,822 (19.85%)	66,139 (5.81%)
2020	27,803 (4.32%)	n/a	17,475 (13.48%)	20,420 (10.04%)	4,350 (14.83%)	70,048 (6.15%)
2021	54,855 (8.51%)	n/a	19,504 (15.05%)	33,429 (16.44%)	3,609 (12.30%)	111,397 (9.78%)
2022	127,628 (19.81%)	20,935 (15.77%)	20,078 (15.49%)	50,839 (25.01%)	3,917 (13.35%)	223,397 (19.61%)

2023	279,986 (43.46%)	54,388 (40.96%)	19,260 (14.86%)	52,255 (25.70%)	3,435 (11.71%)	409,324 (35.93%)
2024	127,782 (19.83%)	57,466 (43.28%)	5,254 (4.05%)	14,472 (7.12%)	992 (3.38%)	205,966 (18.08%)
Comorbidity						
Asthma	87,759 (13.62%)	18,599 (14.01%)	17,663 (13.63%)	21,922 (10.78%)	2,976 (10.14%)	148,919 (13.07%)
CKD	84,074 (13.05%)	11,643 (8.77%)	21,182 (16.34%)	37,013 (18.21%)	5,265 (17.95%)	159,177 (13.97%)
COPD	30,586 (4.75%)	4,633 (3.49%)	8,311 (6.41%)	13,835 (6.81%)	2,102 (7.17%)	59,467 (5.22%)
Hyperlipidemia	345,344 (53.60%)	63,548 (47.86%)	64,105 (49.46%)	109,648 (53.93%)	16,231 (55.33%)	598,876 (52.57%)
Hypertension	353,767 (54.91%)	64,623 (48.67%)	71,357 (55.06%)	118,368 (58.22%)	17,678 (60.26%)	625,793 (54.93%)
Major Depression	78,009 (12.11%)	15,264 (11.49%)	15,804 (12.19%)	17,762 (8.74%)	2,466 (8.41%)	129,305 (11.35%)
College Past Present						
Attended but not currently	297,190 (46.13%)	74,378 (56.01%)	51,437 (39.69%)	62,079 (30.54%)	7,801 (26.59%)	492,885 (43.26%)
Currently attending	10,373 (1.61%)	2,755 (2.07%)	1,613 (1.24%)	1,312 (0.65%)	163 (0.56%)	16,216 (1.42%)
No college on record	315,277 (48.94%)	52,133 (39.26%)	68,755 (53.05%)	128,966 (63.44%)	19,326 (65.88%)	584,457 (51.30%)
Unknown	21,432 (3.33%)	3,523 (2.65%)	7,796 (6.02%)	10,942 (5.38%)	2,047 (6.98%)	45,740 (4.01%)
Estimated Individual Income						
0 - 25,000	17,310 (2.69%)	3,350 (2.52%)	5,241 (4.04%)	7,134 (3.51%)	942 (3.21%)	33,977 (2.98%)
25,001 - 30,000	27,344 (4.24%)	5,055 (3.81%)	7,395 (5.71%)	10,795 (5.31%)	1,400 (4.77%)	51,989 (4.56%)
30,001 - 35,000	41,133 (6.38%)	7,412 (5.58%)	10,962 (8.46%)	16,654 (8.19%)	2,369 (8.08%)	78,530 (6.89%)
35,001 - 40,000	55,897 (8.68%)	10,189 (7.67%)	13,920 (10.74%)	21,538 (10.59%)	3,252 (11.08%)	104,796 (9.20%)
40,001 - 50,000	127,513 (19.79%)	24,843 (18.71%)	28,085 (21.67%)	43,223 (21.26%)	6,392 (21.79%)	230,056 (20.19%)
50,001 - 60,000	110,352 (17.13%)	22,773 (17.15%)	20,686 (15.96%)	32,940 (16.20%)	4,862 (16.57%)	191,613 (16.82%)
60,001 - 80,000	132,732 (20.60%)	28,731 (21.64%)	21,554 (16.63%)	35,448 (17.44%)	4,924 (16.78%)	223,389 (19.61%)
80,001 - 100,000	60,808 (9.44%)	14,144 (10.65%)	8,119 (6.26%)	14,672 (7.22%)	1,909 (6.51%)	99,652 (8.75%)
100,001 - 120,000	29,013 (4.50%)	7,106 (5.35%)	3,581 (2.76%)	6,215 (3.06%)	804 (2.74%)	46,719 (4.10%)
120,001 - 150,000	16,767 (2.60%)	4,469 (3.37%)	1,865 (1.44%)	3,113 (1.53%)	359 (1.22%)	26,573 (2.33%)
More than 150K	3,971 (0.62%)	1,194 (0.90%)	397 (0.31%)	625 (0.31%)	77 (0.26%)	6,264 (0.55%)
Unknown	21,432 (3.33%)	3,523 (2.65%)	7,796 (6.02%)	10,942 (5.38%)	2,047 (6.98%)	45,740 (4.01%)

Prescribing over time

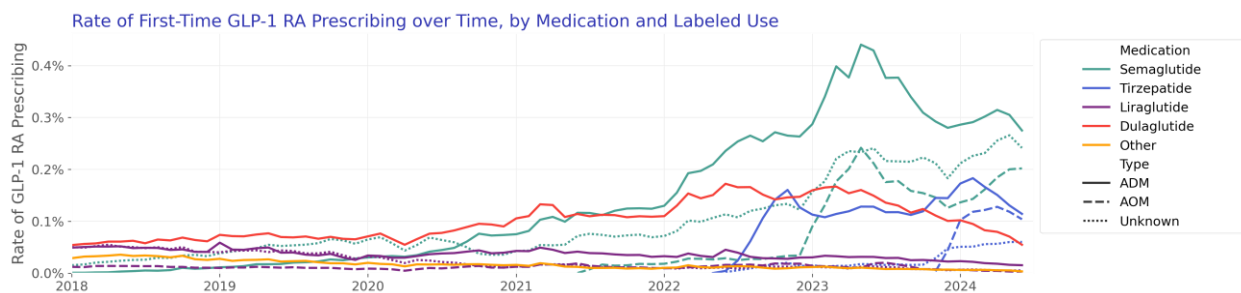
Overall

We describe the monthly rate of prescriptions by medication and FDA labeled use over time:



First-time

We describe the monthly rate of first-time prescriptions by medication and FDA labeled use over time.



Characteristics of patients by year of first GLP-1 RA use are as follows:

Table 2: Patient Characteristics by Year of First GLP-1 RA Prescription.

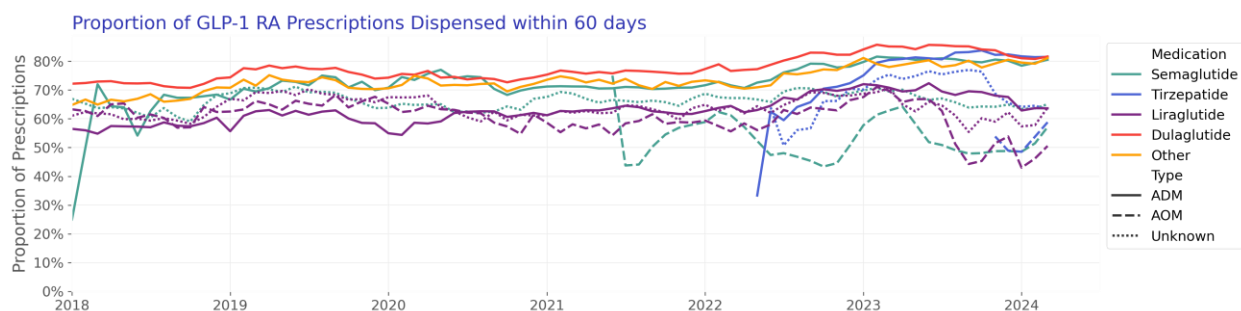
	2018	2019	2020	2021	2022	2023
N	53,027 (100.00%)	66,139 (100.00%)	70,048 (100.00%)	111,397 (100.00%)	223,397 (100.00%)	409,324 (100.00%)
Age Group						
18-44	8,886 (16.76%)	11,341 (17.15%)	12,499 (17.84%)	21,836 (19.60%)	53,218 (23.82%)	107,007 (26.14%)
45-64	28,806 (54.32%)	34,742 (52.53%)	36,242 (51.74%)	56,072 (50.34%)	111,438 (49.88%)	202,379 (49.44%)
65+	15,335 (28.92%)	20,056 (30.32%)	21,307 (30.42%)	33,489 (30.06%)	58,741 (26.29%)	99,938 (24.42%)

Sex						
Female	29,438 (55.52%)	36,262 (54.83%)	38,309 (54.69%)	64,555 (57.95%)	140,679 (62.97%)	269,544 (65.85%)
Male	23,588 (44.48%)	29,875 (45.17%)	31,738 (45.31%)	46,839 (42.05%)	82,713 (37.03%)	139,765 (34.15%)
Other	1 (0.00%)	2 (0.00%)	1 (0.00%)	3 (0.00%)	5 (0.00%)	15 (0.00%)
Race						
White	40,659 (76.68%)	50,104 (75.76%)	52,051 (74.31%)	81,991 (73.60%)	162,700 (72.83%)	290,878 (71.06%)
Black or African American	6,425 (12.12%)	7,638 (11.55%)	8,415 (12.01%)	13,254 (11.90%)	27,975 (12.52%)	54,308 (13.27%)
Asian	1,023 (1.93%)	1,500 (2.27%)	1,812 (2.59%)	3,289 (2.95%)	5,441 (2.44%)	8,880 (2.17%)
Unknown	2,274 (4.29%)	2,933 (4.43%)	2,979 (4.25%)	4,515 (4.05%)	9,852 (4.41%)	24,256 (5.93%)
Native Hawaiian or Other Pacific Islander	147 (0.28%)	202 (0.31%)	255 (0.36%)	423 (0.38%)	748 (0.33%)	1,125 (0.27%)
American Indian or Alaska Native	356 (0.67%)	487 (0.74%)	508 (0.73%)	922 (0.83%)	1,580 (0.71%)	2,489 (0.61%)
Other Race	1,780 (3.36%)	2,783 (4.21%)	3,404 (4.86%)	5,839 (5.24%)	12,441 (5.57%)	22,334 (5.46%)
Declined to answer	363 (0.68%)	492 (0.74%)	624 (0.89%)	1,164 (1.04%)	2,660 (1.19%)	5,054 (1.23%)
Ethnicity						
Hispanic or Latino	5,193 (9.79%)	7,054 (10.67%)	8,305 (11.86%)	14,020 (12.59%)	29,247 (13.09%)	49,828 (12.17%)
Not Hispanic or Latino	44,068 (83.10%)	54,500 (82.40%)	57,098 (81.51%)	90,169 (80.94%)	178,604 (79.95%)	330,353 (80.71%)
Unknown	3,356 (6.33%)	4,056 (6.13%)	4,037 (5.76%)	6,067 (5.45%)	12,796 (5.73%)	23,125 (5.65%)
Declined to answer	410 (0.77%)	529 (0.80%)	608 (0.87%)	1,141 (1.02%)	2,750 (1.23%)	6,018 (1.47%)
Characteristics						
Type II Diabetes	38,702 (72.99%)	49,212 (74.41%)	50,555 (72.17%)	72,007 (64.64%)	115,808 (51.84%)	181,062 (44.23%)
Overweight or Obesity	32,051 (60.44%)	39,564 (59.82%)	39,884 (56.94%)	66,668 (59.85%)	138,790 (62.13%)	270,618 (66.11%)
Medication						
Semaglutide	7,026 (13.25%)	19,192 (29.02%)	27,803 (39.69%)	54,855 (49.24%)	127,628 (57.13%)	279,986 (68.40%)
Tirzepatide	n/a	n/a	n/a	n/a	20,935 (9.37%)	54,388 (13.29%)
Liraglutide	24,862 (46.89%)	23,168 (35.03%)	17,475 (24.95%)	19,504 (17.51%)	20,078 (8.99%)	19,260 (4.71%)
Dulaglutide	13,927 (26.26%)	17,957 (27.15%)	20,420 (29.15%)	33,429 (30.01%)	50,839 (22.76%)	52,255 (12.77%)
Other	7,212 (13.60%)	5,822 (8.80%)	4,350 (6.21%)	3,609 (3.24%)	3,917 (1.75%)	3,435 (0.84%)
Labeled Use						
ADM	33,094 (62.41%)	39,861 (60.27%)	48,193 (68.80%)	82,485 (74.05%)	165,139 (73.92%)	251,087 (61.34%)
AOM	2,877 (5.43%)	2,644 (4.00%)	2,520 (3.60%)	6,281 (5.64%)	14,462 (6.47%)	68,366 (16.70%)

Unknown	17,056 (32.16%)	23,634 (35.73%)	19,335 (27.60%)	22,631 (20.32%)	43,796 (19.60%)	89,871 (21.96%)
Comorbidity						
Asthma	5,844 (11.02%)	7,999 (12.09%)	8,332 (11.89%)	13,753 (12.35%)	28,085 (12.57%)	54,839 (13.40%)
CKD	8,986 (16.95%)	12,278 (18.56%)	13,663 (19.51%)	20,420 (18.33%)	31,347 (14.03%)	48,189 (11.77%)
COPD	3,522 (6.64%)	4,572 (6.91%)	4,659 (6.65%)	6,529 (5.86%)	10,909 (4.88%)	19,201 (4.69%)
Hyperlipidemia	32,173 (60.67%)	40,617 (61.41%)	41,046 (58.60%)	61,656 (55.35%)	112,883 (50.53%)	202,668 (49.51%)
Hypertension	34,252 (64.59%)	43,080 (65.14%)	43,284 (61.79%)	65,081 (58.42%)	118,455 (53.02%)	211,240 (51.61%)
Major Depression	5,263 (9.93%)	7,537 (11.40%)	7,821 (11.17%)	13,135 (11.79%)	25,278 (11.32%)	45,486 (11.11%)
College Past Present						
Attended but not currently	16,969 (32.00%)	21,958 (33.20%)	24,080 (34.38%)	41,805 (37.53%)	96,821 (43.34%)	192,212 (46.96%)
Currently attending	471 (0.89%)	556 (0.84%)	734 (1.05%)	1,302 (1.17%)	3,218 (1.44%)	6,514 (1.59%)
No college on record	31,371 (59.16%)	39,070 (59.07%)	41,162 (58.76%)	63,283 (56.81%)	115,958 (51.91%)	197,222 (48.18%)
Unknown	4,216 (7.95%)	4,555 (6.89%)	4,072 (5.81%)	5,007 (4.49%)	7,400 (3.31%)	13,376 (3.27%)
Estimated Individual Income						
0 - 25,000	1,247 (2.35%)	1,731 (2.62%)	2,078 (2.97%)	3,349 (3.01%)	6,495 (2.91%)	12,515 (3.06%)
25,001 - 30,000	2,193 (4.14%)	2,944 (4.45%)	3,173 (4.53%)	5,230 (4.69%)	9,983 (4.47%)	18,740 (4.58%)
30,001 - 35,000	3,917 (7.39%)	5,002 (7.56%)	5,307 (7.58%)	8,129 (7.30%)	15,528 (6.95%)	27,241 (6.66%)
35,001 - 40,000	5,396 (10.18%)	6,900 (10.43%)	7,113 (10.15%)	11,127 (9.99%)	20,530 (9.19%)	36,209 (8.85%)
40,001 - 50,000	11,429 (21.55%)	14,665 (22.17%)	15,393 (21.97%)	23,971 (21.52%)	45,245 (20.25%)	80,223 (19.60%)
50,001 - 60,000	9,189 (17.33%)	11,271 (17.04%)	12,092 (17.26%)	18,899 (16.97%)	37,396 (16.74%)	68,674 (16.78%)
60,001 - 80,000	9,679 (18.25%)	11,725 (17.73%)	12,508 (17.86%)	20,581 (18.48%)	44,368 (19.86%)	82,808 (20.23%)
80,001 - 100,000	3,476 (6.56%)	4,371 (6.61%)	4,862 (6.94%)	8,679 (7.79%)	20,239 (9.06%)	37,979 (9.28%)
100,001 - 120,000	1,430 (2.70%)	1,849 (2.80%)	2,094 (2.99%)	3,815 (3.42%)	9,543 (4.27%)	18,244 (4.46%)
120,001 - 150,000	707 (1.33%)	940 (1.42%)	1,125 (1.61%)	2,127 (1.91%)	5,406 (2.42%)	10,714 (2.62%)
More than 150K	148 (0.28%)	186 (0.28%)	231 (0.33%)	483 (0.43%)	1,264 (0.57%)	2,601 (0.64%)
Unknown	4,216 (7.95%)	4,555 (6.89%)	4,072 (5.81%)	5,007 (4.49%)	7,400 (3.31%)	13,376 (3.27%)

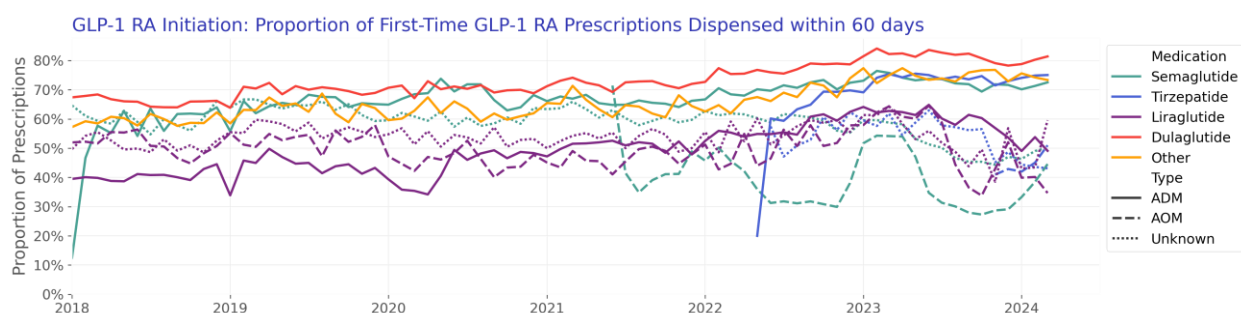
60-day dispensing over time

We describe the proportion of patients with any GLP-1 RA prescriptions (first-time and repeat) in a given month who filled any GLP-1 RA in the 60 days following their prescription.



60-day initiation over time

We describe the proportion of patients first-prescribed a GLP-1 RA who filled any GLP-1 RA in the subsequent 60 days over time.



Patient characteristics are given in Table 3:

Table 3: Patient Characteristics by Dispense Status. Dispense status refers to presence of any GLP-1 RA dispense within 60 days of first GLP-1 RA prescription. Table contains the subset of patients with observable 60-day dispense outcomes.

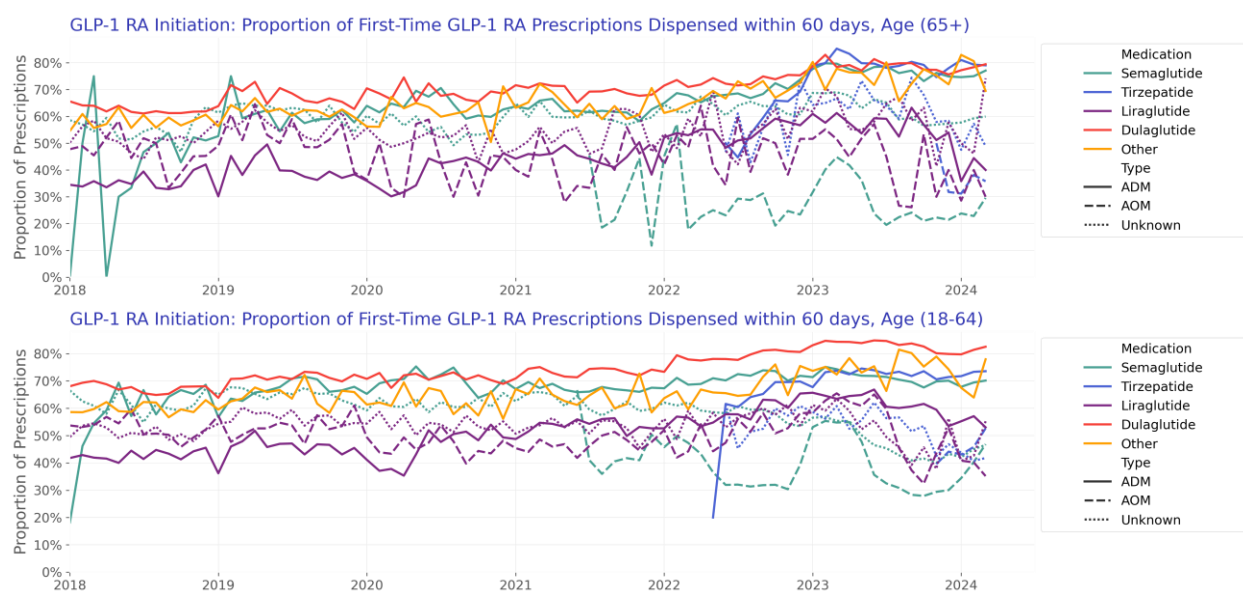
	Dispensed in 60 Days	Not Dispensed in 60 Days	Overall
N	667,548 (100.00%)	386,348 (100.00%)	1,053,896 (100.00%)
Age Group			
18-44	139,723 (20.93%)	106,172 (27.48%)	245,895 (23.33%)
45-64	343,256 (51.42%)	185,394 (47.99%)	528,650 (50.16%)
65+	184,569 (27.65%)	94,782 (24.53%)	279,351 (26.51%)
Sex			
Female	406,952 (60.96%)	251,992 (65.22%)	658,944 (62.52%)
Male	260,576 (39.03%)	134,346 (34.77%)	394,922 (37.47%)
Other	20 (0.00%)	10 (0.00%)	30 (0.00%)
Race			
White	479,665 (71.85%)	283,335 (73.34%)	763,000 (72.40%)
Black or African American	82,832 (12.41%)	49,263 (12.75%)	132,095 (12.53%)
Asian	16,773 (2.51%)	8,153 (2.11%)	24,926 (2.37%)
Unknown	37,145 (5.56%)	19,284 (4.99%)	56,429 (5.35%)

Native Hawaiian or Other Pacific Islander	2,136 (0.32%)	1,126 (0.29%)	3,262 (0.31%)
American Indian or Alaska Native	4,490 (0.67%)	2,590 (0.67%)	7,080 (0.67%)
Other Race	36,625 (5.49%)	18,553 (4.80%)	55,178 (5.24%)
Declined to answer	7,882 (1.18%)	4,044 (1.05%)	11,926 (1.13%)
Ethnicity			
Hispanic or Latino	80,832 (12.11%)	48,285 (12.50%)	129,117 (12.25%)
Not Hispanic or Latino	539,668 (80.84%)	314,306 (81.35%)	853,974 (81.03%)
Unknown	38,061 (5.70%)	19,344 (5.01%)	57,405 (5.45%)
Declined to answer	8,987 (1.35%)	4,413 (1.14%)	13,400 (1.27%)
Characteristics			
Type II Diabetes	392,874 (58.85%)	168,084 (43.51%)	560,958 (53.23%)
Overweight or Obesity	414,211 (62.05%)	272,425 (70.51%)	686,636 (65.15%)
Medication			
Semaglutide	363,037 (54.38%)	230,128 (59.56%)	593,165 (56.28%)
Tirzepatide	77,798 (11.65%)	38,568 (9.98%)	116,366 (11.04%)
Liraglutide	63,327 (9.49%)	60,540 (15.67%)	123,867 (11.75%)
Dulaglutide	145,293 (21.77%)	47,195 (12.22%)	192,488 (18.26%)
Other	18,093 (2.71%)	9,917 (2.57%)	28,010 (2.66%)
Labeled Use			
ADM	474,851 (71.13%)	203,473 (52.67%)	678,324 (64.36%)
AOM	56,853 (8.52%)	73,518 (19.03%)	130,371 (12.37%)
Unknown	135,844 (20.35%)	109,357 (28.31%)	245,201 (23.27%)
Year			
2018	28,730 (4.30%)	23,341 (6.04%)	52,071 (4.94%)
2019	39,340 (5.89%)	25,424 (6.58%)	64,764 (6.15%)
2020	41,990 (6.29%)	26,480 (6.85%)	68,470 (6.50%)
2021	69,330 (10.39%)	39,690 (10.27%)	109,020 (10.34%)
2022	144,051 (21.58%)	71,845 (18.60%)	215,896 (20.49%)
2023	249,632 (37.40%)	142,662 (36.93%)	392,294 (37.22%)
2024	94,475 (14.15%)	56,906 (14.73%)	151,381 (14.36%)
Comorbidity			
Asthma	86,019 (12.89%)	53,524 (13.85%)	139,543 (13.24%)
CKD	99,654 (14.93%)	52,453 (13.58%)	152,107 (14.43%)
COPD	36,786 (5.51%)	19,260 (4.99%)	56,046 (5.32%)
Hyperlipidemia	359,925 (53.92%)	203,816 (52.75%)	563,741 (53.49%)
Hypertension	371,527 (55.66%)	214,157 (55.43%)	585,684 (55.57%)
Major Depression	72,915 (10.92%)	50,069 (12.96%)	122,984 (11.67%)
College Past Present			
Attended but not currently	273,726 (41.00%)	178,342 (46.16%)	452,068 (42.89%)
Currently attending	7,910 (1.18%)	6,753 (1.75%)	14,663 (1.39%)
No college on record	359,861 (53.91%)	185,671 (48.06%)	545,532 (51.76%)
Unknown	26,051 (3.90%)	15,582 (4.03%)	41,633 (3.95%)
Estimated Individual Income			

0 - 25,000	19,214 (2.88%)	11,916 (3.08%)	31,130 (2.95%)
25,001 - 30,000	29,794 (4.46%)	18,195 (4.71%)	47,989 (4.55%)
30,001 - 35,000	46,329 (6.94%)	26,451 (6.85%)	72,780 (6.91%)
35,001 - 40,000	62,193 (9.32%)	35,192 (9.11%)	97,385 (9.24%)
40,001 - 50,000	136,717 (20.48%)	77,277 (20.00%)	213,994 (20.31%)
50,001 - 60,000	112,548 (16.86%)	65,193 (16.87%)	177,741 (16.87%)
60,001 - 80,000	130,748 (19.59%)	75,870 (19.64%)	206,618 (19.61%)
80,001 - 100,000	58,200 (8.72%)	33,508 (8.67%)	91,708 (8.70%)
100,001 - 120,000	26,994 (4.04%)	15,898 (4.11%)	42,892 (4.07%)
120,001 - 150,000	15,249 (2.28%)	9,081 (2.35%)	24,330 (2.31%)
More than 150K	3,511 (0.53%)	2,185 (0.57%)	5,696 (0.54%)
Unknown	26,051 (3.90%)	15,582 (4.03%)	41,633 (3.95%)

By Age

As a proxy for Medicare insurance, we segment initiation rate by populations 65+ versus 18-64.



Patient characteristics for patients aged 65+ are given in Table 4:

Table 4: Patient Characteristics by Dispense Status, Age 65+. Dispense status refers to presence of any GLP-1 RA dispense within 60 days of first GLP-1 RA prescription. Table contains the subset of patients with observable 60-day dispense outcomes.

	Dispensed in 60 Days	Not Dispensed in 60 Days	Overall
N	184,569 (100.00%)	94,782 (100.00%)	279,351 (100.00%)
Age Group			
65+	184,569 (100.00%)	94,782 (100.00%)	279,351 (100.00%)
Sex			
Female	101,236 (54.85%)	51,277 (54.10%)	152,513 (54.60%)
Male	83,333 (45.15%)	43,505 (45.90%)	126,838 (45.40%)
Race			
White	144,560 (78.32%)	75,983 (80.17%)	220,543 (78.95%)
Black or African American	15,598 (8.45%)	8,223 (8.68%)	23,821 (8.53%)
Asian	4,118 (2.23%)	1,766 (1.86%)	5,884 (2.11%)
Unknown	9,747 (5.28%)	4,661 (4.92%)	14,408 (5.16%)
Native Hawaiian or Other Pacific Islander	293 (0.16%)	136 (0.14%)	429 (0.15%)
American Indian or Alaska Native	969 (0.53%)	447 (0.47%)	1,416 (0.51%)
Other Race	7,462 (4.04%)	2,858 (3.02%)	10,320 (3.69%)
Declined to answer	1,822 (0.99%)	708 (0.75%)	2,530 (0.91%)
Ethnicity			
Hispanic or Latino	14,508 (7.86%)	6,925 (7.31%)	21,433 (7.67%)
Not Hispanic or Latino	156,585 (84.84%)	81,487 (85.97%)	238,072 (85.22%)
Unknown	10,865 (5.89%)	5,259 (5.55%)	16,124 (5.77%)
Declined to answer	2,611 (1.41%)	1,111 (1.17%)	3,722 (1.33%)
Characteristics			
Type II Diabetes	129,010 (69.90%)	61,740 (65.14%)	190,750 (68.28%)
Overweight or Obesity	108,597 (58.84%)	57,970 (61.16%)	166,567 (59.63%)
Medication			
Semaglutide	98,510 (53.37%)	50,375 (53.15%)	148,885 (53.30%)
Tirzepatide	14,006 (7.59%)	5,420 (5.72%)	19,426 (6.95%)
Liraglutide	15,308 (8.29%)	16,754 (17.68%)	32,062 (11.48%)
Dulaglutide	49,629 (26.89%)	18,433 (19.45%)	68,062 (24.36%)
Other	7,116 (3.86%)	3,800 (4.01%)	10,916 (3.91%)
Labeled Use			
ADM	141,927 (76.90%)	61,662 (65.06%)	203,589 (72.88%)
AOM	4,201 (2.28%)	8,199 (8.65%)	12,400 (4.44%)
Unknown	38,441 (20.83%)	24,921 (26.29%)	63,362 (22.68%)
Year			
2018	7,790 (4.22%)	7,215 (7.61%)	15,005 (5.37%)
2019	11,432 (6.19%)	8,073 (8.52%)	19,505 (6.98%)
2020	12,212 (6.62%)	8,457 (8.92%)	20,669 (7.40%)
2021	20,260 (10.98%)	12,338 (13.02%)	32,598 (11.67%)

	Dispensed in 60 Days	Not Dispensed in 60 Days	Overall
2022	37,573 (20.36%)	18,440 (19.46%)	56,013 (20.05%)
2023	67,969 (36.83%)	27,606 (29.13%)	95,575 (34.21%)
2024	27,333 (14.81%)	12,653 (13.35%)	39,986 (14.31%)
Comorbidity			
Asthma	20,949 (11.35%)	11,026 (11.63%)	31,975 (11.45%)
CKD	57,045 (30.91%)	30,482 (32.16%)	87,527 (31.33%)
COPD	18,095 (9.80%)	9,966 (10.51%)	28,061 (10.05%)
Hyperlipidemia	123,128 (66.71%)	67,369 (71.08%)	190,497 (68.19%)
Hypertension	128,933 (69.86%)	71,386 (75.32%)	200,319 (71.71%)
Major Depression	19,715 (10.68%)	10,654 (11.24%)	30,369 (10.87%)
College Past Present			
Attended but not currently	13,808 (7.48%)	7,528 (7.94%)	21,336 (7.64%)
Currently attending	623 (0.34%)	349 (0.37%)	972 (0.35%)
No college on record	161,210 (87.34%)	81,764 (86.27%)	242,974 (86.98%)
Unknown	8,928 (4.84%)	5,141 (5.42%)	14,069 (5.04%)
Estimated Individual Income			
0 - 25,000	3,825 (2.07%)	1,608 (1.70%)	5,433 (1.94%)
25,001 - 30,000	7,845 (4.25%)	3,782 (3.99%)	11,627 (4.16%)
30,001 - 35,000	15,805 (8.56%)	7,765 (8.19%)	23,570 (8.44%)
35,001 - 40,000	18,047 (9.78%)	9,398 (9.92%)	27,445 (9.82%)
40,001 - 50,000	35,956 (19.48%)	18,905 (19.95%)	54,861 (19.64%)
50,001 - 60,000	30,585 (16.57%)	16,219 (17.11%)	46,804 (16.75%)
60,001 - 80,000	34,693 (18.80%)	17,827 (18.81%)	52,520 (18.80%)
80,001 - 100,000	16,271 (8.82%)	8,028 (8.47%)	24,299 (8.70%)
100,001 - 120,000	7,697 (4.17%)	3,800 (4.01%)	11,497 (4.12%)
120,001 - 150,000	4,174 (2.26%)	1,973 (2.08%)	6,147 (2.20%)
More than 150K	743 (0.40%)	336 (0.35%)	1,079 (0.39%)
Unknown	8,928 (4.84%)	5,141 (5.42%)	14,069 (5.04%)

Patient characteristics for patients aged 18-65 are given in Table 5:

Table 5: Patient Characteristics by Dispense Status, Age 18-64. Dispense status refers to presence of any GLP-1 RA dispense within 60 days of first GLP-1 RA prescription. Table contains the subset of patients with observable 60-day dispense outcomes.

	Dispensed in 60 Days	Not Dispensed in 60 Days	Overall
N	482,979 (100.00%)	291,566 (100.00%)	774,545 (100.00%)
Age Group			
18-44	139,723 (28.93%)	106,172 (36.41%)	245,895 (31.75%)
45-64	343,256 (71.07%)	185,394 (63.59%)	528,650 (68.25%)
Sex			
Female	305,716 (63.30%)	200,715 (68.84%)	506,431 (65.38%)
Male	177,243 (36.70%)	90,841 (31.16%)	268,084 (34.61%)
Other	20 (0.00%)	10 (0.00%)	30 (0.00%)
Race			
White	335,105 (69.38%)	207,352 (71.12%)	542,457 (70.04%)
Black or African American	67,234 (13.92%)	41,040 (14.08%)	108,274 (13.98%)
Asian	12,655 (2.62%)	6,387 (2.19%)	19,042 (2.46%)
Unknown	27,398 (5.67%)	14,623 (5.02%)	42,021 (5.43%)
Native Hawaiian or Other Pacific Islander	1,843 (0.38%)	990 (0.34%)	2,833 (0.37%)
American Indian or Alaska Native	3,521 (0.73%)	2,143 (0.73%)	5,664 (0.73%)
Other Race	29,163 (6.04%)	15,695 (5.38%)	44,858 (5.79%)
Declined to answer	6,060 (1.25%)	3,336 (1.14%)	9,396 (1.21%)
Ethnicity			
Hispanic or Latino	66,324 (13.73%)	41,360 (14.19%)	107,684 (13.90%)
Not Hispanic or Latino	383,083 (79.32%)	232,819 (79.85%)	615,902 (79.52%)
Unknown	27,196 (5.63%)	14,085 (4.83%)	41,281 (5.33%)
Declined to answer	6,376 (1.32%)	3,302 (1.13%)	9,678 (1.25%)
Characteristics			
Type II Diabetes	263,864 (54.63%)	106,344 (36.47%)	370,208 (47.80%)
Overweight or Obesity	305,614 (63.28%)	214,455 (73.55%)	520,069 (67.15%)
Medication			
Semaglutide	264,527 (54.77%)	179,753 (61.65%)	444,280 (57.36%)
Tirzepatide	63,792 (13.21%)	33,148 (11.37%)	96,940 (12.52%)
Liraglutide	48,019 (9.94%)	43,786 (15.02%)	91,805 (11.85%)
Dulaglutide	95,664 (19.81%)	28,762 (9.86%)	124,426 (16.06%)
Other	10,977 (2.27%)	6,117 (2.10%)	17,094 (2.21%)
Labeled Use			
ADM	332,924 (68.93%)	141,811 (48.64%)	474,735 (61.29%)
AOM	52,652 (10.90%)	65,319 (22.40%)	117,971 (15.23%)
Unknown	97,403 (20.17%)	84,436 (28.96%)	181,839 (23.48%)
Year			
2018	20,940 (4.34%)	16,126 (5.53%)	37,066 (4.79%)
2019	27,908 (5.78%)	17,351 (5.95%)	45,259 (5.84%)

	Dispensed in 60 Days	Not Dispensed in 60 Days	Overall
2020	29,778 (6.17%)	18,023 (6.18%)	47,801 (6.17%)
2021	49,070 (10.16%)	27,352 (9.38%)	76,422 (9.87%)
2022	106,478 (22.05%)	53,405 (18.32%)	159,883 (20.64%)
2023	181,663 (37.61%)	115,056 (39.46%)	296,719 (38.31%)
2024	67,142 (13.90%)	44,253 (15.18%)	111,395 (14.38%)
Comorbidity			
Asthma	65,070 (13.47%)	42,498 (14.58%)	107,568 (13.89%)
CKD	42,609 (8.82%)	21,971 (7.54%)	64,580 (8.34%)
COPD	18,691 (3.87%)	9,294 (3.19%)	27,985 (3.61%)
Hyperlipidemia	236,797 (49.03%)	136,447 (46.80%)	373,244 (48.19%)
Hypertension	242,594 (50.23%)	142,771 (48.97%)	385,365 (49.75%)
Major Depression	53,200 (11.01%)	39,415 (13.52%)	92,615 (11.96%)
College Past Present			
Attended but not currently	259,918 (53.82%)	170,814 (58.59%)	430,732 (55.61%)
Currently attending	7,287 (1.51%)	6,404 (2.20%)	13,691 (1.77%)
No college on record	198,651 (41.13%)	103,907 (35.64%)	302,558 (39.06%)
Unknown	17,123 (3.55%)	10,441 (3.58%)	27,564 (3.56%)
Estimated Individual Income			
0 - 25,000	15,389 (3.19%)	10,308 (3.54%)	25,697 (3.32%)
25,001 - 30,000	21,949 (4.54%)	14,413 (4.94%)	36,362 (4.69%)
30,001 - 35,000	30,524 (6.32%)	18,686 (6.41%)	49,210 (6.35%)
35,001 - 40,000	44,146 (9.14%)	25,794 (8.85%)	69,940 (9.03%)
40,001 - 50,000	100,761 (20.86%)	58,372 (20.02%)	159,133 (20.55%)
50,001 - 60,000	81,963 (16.97%)	48,974 (16.80%)	130,937 (16.91%)
60,001 - 80,000	96,055 (19.89%)	58,043 (19.91%)	154,098 (19.90%)
80,001 - 100,000	41,929 (8.68%)	25,480 (8.74%)	67,409 (8.70%)
100,001 - 120,000	19,297 (4.00%)	12,098 (4.15%)	31,395 (4.05%)
120,001 - 150,000	11,075 (2.29%)	7,108 (2.44%)	18,183 (2.35%)
More than 150K	2,768 (0.57%)	1,849 (0.63%)	4,617 (0.60%)
Unknown	17,123 (3.55%)	10,441 (3.58%)	27,564 (3.56%)

Discussion and Conclusion

This analysis summarized GLP-1 RA prescribing trends and patient characteristics from January 2018 to June 2024. During this period 1,162,662 patients were prescribed a total of 4,815,135 total prescriptions. ADMs accounted for 87.0% of prescriptions, and AOMs accounted for 13.0%, among prescriptions where use was known. A larger proportion of ADMs, compared to AOMs, were dispensed within 60 days: 70.0% of first-time ADM prescriptions and 43.6% of first-time AOM prescriptions had a fill within 60 days.

Several limitations of our analysis should be noted. All data are preliminary and may change as additional data are obtained. These findings are consistent with data accessed July 17, 2024. Data presented in this analysis represent raw counts and/or rates, and post-stratification methods have not been conducted. In addition, cohorts with small counts may be suppressed during the de-identification process leading to the appearance of zero patients for a given time period. Given relatively large numbers of patients prescribed and dispensed GLP-1 RA, we do not expect substantial suppression in the most recent periods. The unknowns in this report either indicate the value was not included in the individual's electronic health record or that it was excluded from the data to protect an individual's identity as a part of Truveta's commitment to privacy (Truveta, 2024). Finally, this report is a description of prescribing trends and patient characteristics only. Results should not be interpreted as causal.

References

Truveta. (2024). Truveta's Approach to Patient Privacy.

<https://resources.truveta.com/patient-privacy>

Centers for disease control and prevention. "National diabetes statistics report". 2020.

<https://www.cdc.gov/diabetes/data/statistics-report/index.html>.

Davies, Melanie J., et al. "Efficacy of liraglutide for weight loss among patients with type 2 diabetes: the SCALE diabetes randomized clinical trial." *JAMA* 314.7 (2015): 687-699.

Davies, Melanie, et al. "Semaglutide 2· 4 mg once a week in adults with overweight or obesity, and type 2 diabetes (STEP 2): a randomised, double-blind, double-dummy, placebo-controlled, phase 3 trial." *The Lancet* 397.10278 (2021): 971-984.

Hales, Craig M., et al. "Prevalence of obesity and severe obesity among adults: United States, 2017–2018. NCHS Data Brief, no 360." *National Center for Health Statistics* 360 (2020): 1-7.

Han, Sabrina H., et al. "Public interest in the off-label use of glucagon-like peptide 1 agonists (Ozempic) for cosmetic weight loss: a google trends analysis." *Aesthetic Surgery Journal* 44.1 (2024): 60-67.

Garvey, W. Timothy, et al. "Tirzepatide once weekly for the treatment of obesity in people with type 2 diabetes (SURMOUNT-2): a double-blind, randomised, multicentre, placebo-controlled, phase 3 trial." *The Lancet* (2023).

Jastreboff, Ania M., et al. "Tirzepatide once weekly for the treatment of obesity." *New England Journal of Medicine* 387.3 (2022): 205-216.

Lincoff, A. Michael, et al. "Semaglutide and cardiovascular outcomes in obesity without diabetes." *New England Journal of Medicine* 389.24 (2023): 2221-2232.

Ussher, John R., and Daniel J. Drucker. "Glucagon-like peptide 1 receptor agonists: cardiovascular benefits and mechanisms of action." *Nature Reviews Cardiology* 20.7 (2023): 463-474.

Wilding, John PH, et al. "Once-weekly semaglutide in adults with overweight or obesity." *New England Journal of Medicine* 384.11 (2021): 989-1002.

Whitley, Heather P., Jennifer M. Trujillo, and Joshua J. Neumiller. "Potential Strategies for Addressing GLP-1 and Dual GLP-1/GIP Receptor Agonist Shortages." *Clinical Diabetes* (2023): cd230023.

Yeh, Tzu-Lin, et al. "Effect of glucagon-like peptide-1 receptor agonists on glycemic control, and weight reduction in adults: A multivariate meta-analysis." *PLOS One* 18.1 (2023): e0278685.

Acknowledgements

The authors thank Dr. Ty Gluckman for his contributions and feedback on describing GLP-1 RA prescribing trends.