


Title: Predicting COVID-19 Infection Among Older Syrian Refugees in Lebanon: A Multi-Wave Survey

Short title: COVID-19 Infection Among Older Syrian Refugees in Lebanon

Authors: Berthe Abi Zeid¹ MPH, Tanya El Khoury¹ MPH, Sawsan Abdulrahim² PhD, Hala Ghattas^{1,3} PhD, Stephen McCall¹  DPhil

 Corresponding author. Email: sm227@aub.edu.lb

Affiliation:

¹Center for Research on Population and Health, Faculty of Health Sciences, American University of Beirut, Lebanon

²Department of Health Promotion and Community Health, Faculty of Health Sciences, American University of Beirut, Lebanon

³Department of Health Promotion, Education, Behavior, Arnold School of Public Health, University of South Carolina, Columbia, USA

Count word: (3473/ 3500)

Abstract (261/ 250)

Background: Older refugees, exposed to a cluster of biological and social vulnerabilities, are more susceptible to COVID-19 infection and its complications. This study developed and internally validated a predictive model estimating COVID-19 infection risk among older Syrian refugees in Lebanon. Additionally, it described the barriers to PCR testing among those who reported a COVID-19 infection.

Methods: This was a cross-sectional analysis of a five-wave longitudinal study conducted between September 2020 and March 2022. Syrian refugees aged 50 years or older living in households that received assistance from a humanitarian organization were interviewed by phone. Self-reported COVID-19 infection was the outcome of interest. The predictors were identified using adaptive LASSO regression. The model performance and discrimination were presented using the calibration slope and the Area Under the Curve.

Findings: Of 2,886 participants (median [IQR] age: 56[52-62]; 52.9% males), 283 individuals (9.8%) reported a COVID-19 infection at least once. Six predictors for COVID-19 infection were identified: living outside informal tented settlements, having elementary and preparatory education or above, having chronic conditions, not receiving cash assistance, being water insecure and having unmet waste management needs. The model had moderate discrimination and good calibration. Nearly half of the cases were diagnosed through PCR testing. The main reasons for not testing were perception that the tests were unnecessary (n=91[63.6%]) or inability to afford them (n=46[32.2%]).

Interpretation: High-risk individuals should be targeted based on predictive models incorporating social determinants. Implementing awareness campaigns, screening measures, and cash assistance may reduce vulnerability in future pandemics.

Funding: ELRHA's Research for Health in Humanitarian Crisis Programme and AUB University Research Board.

Research in context

Evidence before the study

A literature search was conducted in the databases PubMed and Google Scholar for studies published between February 1, 2020, and June 14, 2022, with the objective of developing a predictive model or examining the associated factors of COVID-19 infection among older adults or refugees. Different combinations of the following keywords were used in our research: “COVID-19 infection”, “SARS-CoV-2”, “Coronavirus”, “predictors”, “risk factors”, “refugees”, “migrants”, and “Syrian”. Previous evidence has shown that displaced populations are considered vulnerable groups highly susceptible to the impacts of COVID-19, due to their exposure to a combination of biological and psychosocial vulnerabilities. In Lebanon, Syrian refugees face an elevated risk of infection and its complications, mainly due to the deterioration of their living conditions resulting from the multiple crises burdening the country. The literature search featured the following potential predictors: age, gender, educational attainment, marital status, housing conditions, socioeconomic status, and presence of chronic illnesses. However, to date, no studies have developed predictive models of COVID-19 infection focusing on Syrian refugees in the MENA region. Additionally, there has been a scarcity of predictive models incorporating social determinants to assess the risk of infection among refugees or older adults in this context. Hence, identifying individuals who are highly susceptible to COVID-19 infection and its severity amongst vulnerable populations is important to inform better targeting of assistance in future outbreaks and to reduce the risk of infection and its complications.

Added value of the study

To the best of our knowledge, this is the first study that exclusively incorporates social determinants into a prediction model of COVID-19 infection among older Syrian refugees. Out of 2,886 participants, 283 individuals (9.8%) reported experiencing COVID-19 infection at least once. Six predictors of COVID-19 infection among older Syrian refugees were identified: living outside informal tented settlements, having elementary and preparatory education or above, having chronic conditions, not receiving cash assistance, being water insecure and having unmet waste management needs. Despite the efforts and the collaboration between UNHCR, several NGOs and the Lebanese Ministry of Public Health to cover the cost of COVID-19 testing and to raise awareness about COVID-19 symptoms and the necessity of testing, only half of the cases were diagnosed through PCR or lateral flow tests. The main reasons for not testing were perceptions that it was unnecessary or inability to afford the tests.

Implications of all the available evidence

The predictors identified in this study could be used to inform targeting efforts by humanitarian organizations to provide assistance to Syrian refugees at higher risk of COVID-19 infection or infections in future pandemics. In addition, it will be important for humanitarian organisations to continue outreach efforts outside of informal tented settlements into the community to reach the most vulnerable to COVID infection with interventions. Furthermore, intensifying awareness campaigns among Syrian refugees about testing

availability and the importance of visiting a healthcare professional, and considering the implementation of free testing in primary healthcare centers and pharmacies will be essential to control infectious diseases in future pandemics.

Introduction

The COVID-19 pandemic placed a tremendous burden on public health worldwide, emphasizing the urgency of prioritizing the well-being of everyone.¹ It exacerbated preexisting health inequalities, further marginalizing vulnerable communities by restricting accessibility to essential services.² As of December 13, 2023, the World Health Organization has recorded a total of 772,386,069 confirmed cases of COVID-19, encompassing 6,987,222 deaths, globally.³ According to Oxfam's report published in March 2022, the COVID-19 mortality rate has been four times higher in lower-income countries than those with higher incomes.⁴ In addition, wealth inequalities in the incidence of COVID-19 infections have been reported globally.⁵ Understanding these inequalities in COVID-19 infections remains important for emergency preparedness for future pandemics.

Displaced populations have increased exposure to infectious diseases and are disproportionately impacted by 'shocks' such as the COVID-19 pandemic.⁶ For instance, refugees face various difficulties such as overcrowding, shortages of supply of hygiene products and personal protective equipment, limited access to healthcare services, fear of deportation, and cultural and language barriers.⁷ Moreover, older refugees have a higher prevalence of pre-existing chronic illnesses,⁸ putting them at higher risk of severe morbidity and mortality due to COVID-19.⁹

Despite the recognition of these potentially increased risks, humanitarian organizations worldwide encountered substantial obstacles due to containment measures and nationwide lockdowns, which limited their ability to aid and protect vulnerable populations.¹⁰ The UN High Commissioner for Refugees (UNHCR) declared a funding shortfall of USD 255 million in its plan for COVID-19 prevention and response among refugee populations.¹¹ Consequently, humanitarian assistance was limited in many settings, which may have exposed refugee populations disproportionately to infection risk through reduced ability to self-isolate due to the need to receive a livelihood.⁷

Eighty per cent of the 25.9 million refugees worldwide live in lower to middle income countries,¹² where Lebanon hosts the highest number of refugees per capita, including 1.5 million Syrian refugees, of whom 831,053 are officially registered with the UNHCR.¹³ In addition to the multiple economic, political and health crises in Lebanon, thousands of Syrians have been forced to return to Syria, creating an environment of fear among Syrians living in the country, regardless of their refugee status.¹⁴ These combined challenges have deteriorated the living conditions of Syrian refugees and are associated with loss of livelihoods, thereby placing them at an elevated risk of infection and its impacts.⁷ Despite their high susceptibility to COVID-19 infection, testing in this population has remained limited with a major barrier being lack of affordability.¹⁵

Identifying those who have an increased susceptibility to infectious disease amongst vulnerable populations is important for future pandemics and outbreaks, of which displaced populations are at higher risk. Furthermore, prediction models developed to anticipate the risk of COVID-19 infection among refugees could support humanitarian organizations in efficiently identifying the most vulnerable groups, enabling them to provide essential

assistance and prevent the occurrence of infections, as well as poor outcomes, while effectively allocating limited resources.

Previous studies conducted among patients who were tested for COVID-19 in the United States have identified age, gender, educational attainment, marital status, housing conditions, socioeconomic status, and presence of chronic illnesses as predictors of COVID-19.^{16,17} These factors might have an impact on an individual's capacity to seek healthcare, comply with treatment, and observe physical distancing measures.¹⁶ Yet, to date, there has been a scarcity of predictive models incorporating social determinants to assess the risk of infection among refugees or older adults in the MENA region. Therefore, this study aimed to develop and internally validate a predictive model to estimate the risk of COVID-19 infection among older Syrian refugees in Lebanon. It also aimed to describe the barriers to PCR testing among those who had COVID-19 infection.

Methods

Study design and setting

This was a cross-sectional analysis of a five-wave longitudinal study that monitored the vulnerabilities of older Syrian Refugees residing in Lebanon to COVID-19 over time. The study complied with the Transparent Reporting of a Multivariable Prediction Model for Individual Prognosis or Diagnosis (TRIPOD) reporting guideline and Strengthening the Reporting of Observational Studies in Epidemiology (STROBE) reporting guideline for prediction modelling.^{18,19}

Sampling and study population

This study targeted Syrian refugees aged 50 years or older who were identified from a complete roster of beneficiary households of a humanitarian NGO [Norwegian Refugee Council]. Within the beneficiary sample listing, all households in Lebanon that received assistance from the humanitarian organization between 2017 and 2020 and included an age-eligible member, were contacted by phone (n=17,384). Adults aged 50 years or older were invited to participate in the study. In households where multiple eligible adults were present, one individual was randomly selected. Verbal consent was taken from all participants and an evaluation of their capacity to consent was conducted for those aged 65 years or older.²⁰ The same participants were contacted over the course of five waves, spanning from September 22, 2020, to March 14, 2022. The study population for the current analysis, as depicted in Figure 1, consisted of participants who completed the first, second, and fifth waves.

Data sources

The survey tool for each wave was created based on various sources, including established scales and context-specific questions and resulted from a collaborative effort engaging academics, humanitarian workers, government representatives, and refugee community members. The questionnaire was drafted in English, then translated into Arabic. Before collecting data, the Arabic version was tested internally with data collectors and local community focal points to ensure comprehension. The survey was conducted in Arabic via computer-assisted telephone interview by trained data collectors, and responses were entered

using Kobotoolbox. Daily monitoring was conducted simultaneously with data collection to ensure the quality of the data. Different sets of questions or modules were included at different waves. Additional information about the development of the survey tool can be found in previously published papers.^{8,21} For the current analysis, demographics, health and self-reported COVID-19 infection characteristics were extracted respectively from waves one (September 22 -December 21, 2020); two (October 23, 2020 – January 20, 2021) and five (January 14-March 14, 2022).

Outcome measures

Self-reported COVID-19 infection was the outcome of interest. The following question was asked in wave 5: “Have you ever had COVID-19?”. In addition, the participants were asked about whether their diagnosis was confirmed through a PCR test or lateral flow test, the reasons for not undergoing testing, and other questions related to their most recent infection, which are detailed in the appendix (Table1; P2).

Candidate predictors

The literature review guided the inclusion of the following candidate predictors for COVID-19 infection: age, sex, education, residence outside or inside informal tented settlements, marital status, number of self-reported physician diagnosed chronic conditions, household food insecurity (measured using the 8-item Food Insecurity Experience Scale; individuals are categorized as not food insecure if their score ranges between 0 and 3, and as food insecure if their score is 4 or higher),²² household water insecurity (measured using the short-form Household Water Insecurity Scale),²³ having unmet waste management needs, receipt of cash assistance and having legal status documentation. The questions used to assess these predictors along with the corresponding survey wave from which they were obtained are provided in the appendix (Table2; P3).

Missing data

The missing values did not exceed 5% for all predictors and were considered to be missing at random. Therefore, a complete case analysis was performed.

Statistical analysis

Descriptive analysis was carried out to report the frequencies and percentages for categorical variables and median and interquartile range for continuous variables. Unadjusted odds ratios (OR) and 95% confidence intervals (95%CI) for each potential predictor were assessed and reported by using unadjusted logistic regressions. A two-sided p-value below 0.05 was considered as statistically significant.

All candidate predictors were categorical except age, which had a linear relationship with the outcome. The presence of multicollinearity was evaluated and a variance inflation factor above five indicated high collinearity. All candidate predictors of self-reported COVID-19 infection were entered into adaptive least absolute shrinkage and selection operator (Lasso) model. The lasso regression methods for predictor selection, applies a shrinkage effect on the coefficient estimates towards zero by selecting an optimal value for Lambda, using 10-fold cross-validation.²⁴ The penalized coefficients were reported and used to calculate the

predicted risk. Double-selection lasso logistic regression, which is a lasso for inference model,²⁵ was used to provide ORs accompanied by their corresponding 95% CI.

The discriminatory ability of the models was assessed using the Area Under the Curve (AUC), which ranges from 0.5 to 1.0. A value of 1.0 indicates a perfect ability to distinguish between those with and without the outcome, while a value of 0.5 suggests a discriminatory ability equivalent to chance. The calibration of models, which measures the agreement between observed outcomes and the model's predictions, was also evaluated, through the C-slope and calibration plot. The calibration plot categorizes individuals into 10 groups based on predictive probabilities and plots the mean predicted risk against the mean observed proportion of events. In a perfectly calibrated model, the plot would show a diagonal line with an intercept of 0 and a slope of 1. A C-slope less than 1 indicated that the model has been overfitted. Similarly, the quality of the prediction model is reflected by Brier score, ranging from 0 (indicating a perfect prediction accuracy) to 1 (indication the worst prediction accuracy). Furthermore, calibration-in-the-large (CITL) was evaluated to determine the overall disparity between the observed frequency of events and the average predicted risk. Overall, the model that exhibited a calibration slope closest to one and achieved a higher AUC was selected as the optimal model. All analyses were conducted using Stata/SE 16.

Ethical approval

This study was approved by the American University of Beirut Social and Behavioral Sciences Institutional Review Board [Reference: SBS-2020-0329]. Verbal consent for participation was obtained from all participants.

Role of the funding source

The funder, ELRHA's Research for Health in Humanitarian Crisis Programme and AUB University Research Board, did not contribute to the study's design, conduct, data collection, management, analysis, interpretation, manuscript preparation, review, approval, or decision to submit it for publication.

Results

Out of the initial 17,384 households contacted during the first wave, 3,838 answered and were eligible, and a total of 3,322 Syrian refugees successfully completed both waves one and two. Among them, 3,006 participants also completed wave five. After excluding 120 participants who were uncertain or unwilling to disclose their history of COVID-19 infection or had experienced a COVID-19 infection prior to wave one, the final sample for analysis comprised 2,886 participants (Figure 1). The median age of the participants was 56 (IQR=52-62; range=50-96); 1,527 (52.9%) were males and 1,761 (61.0%) lived outside tented settlements (Table 1). Among the 2,886 participants, 283 individuals (9.8% [95%CI: 8.7% to 10.9%]) reported experiencing the COVID-19 infection at least once.

The bivariate analysis showed that living outside informal tented settlements (OR=1.55[95%CI: 1.19 to 2.02]) compared to living inside, having elementary (OR=1.42[95%CI: 1.05 to 1.92]) and preparatory education or above (OR=1.62[95%CI: 1.21

to 2.18]) compared to never having attended school, having at least two chronic conditions (OR=1.78[95%CI: 1.31 to 2.42]) compared to not having any, and experiencing household water insecurity (OR=1.48[95%CI: 1.15 to 1.91]) compared to household water security were associated with increased odds of COVID-19 infection. No statistically significant associations were found between the COVID-19 infection and age, sex, marital status, receiving cash assistance, household food insecurity, unmet waste management needs and legal status documentation (Table 1).

Six predictors of COVID-19 infection were identified including residency, education, number of chronic conditions, receiving cash assistance, household water insecurity and unmet waste management needs (Table 2). The model had a C-statistic of 0.621 (95%CI: 0.587 to 0.655), a calibration slope of 1.004 (95%CI:0.704 to 1.304), a brier score of 0.088 and CITL of 0.005 (95%CI: -0.121 to 0.131), which indicate moderate discriminative ability and good calibration. Figure 2 shows the calibration plot of the model and Table 2 presents the penalized coefficients, adjusted ORs, and their associated 95%CI.

The predictors' coefficients indicate that living outside informal tented settlements compared to living inside, having higher education, multimorbidity, not receiving cash assistance, household water insecurity and having unmet waste management needs increased the risk of COVID-19 infection.

To illustrate, the predicted risk could be calculated using the formula below (Table 2):

$$\text{Predicted risk} = [\exp(\text{risk score}) / (1 + (\text{risk score}))] \times 100$$

Where $\text{risk score} = -3.20 + 0.37 * \text{Residency} + 0.23 * \text{Education} + 0.27 * \text{Number of chronic conditions} + 0.17 * \text{Receiving cash assistant} + 0.37 * \text{Household water insecurity experiences scale} + 0.23 * \text{unmet waste management needs}$.

The predicted risk of having COVID-19 for a Syrian refugee who was living inside informal tented settlements, never attended school, did not have any chronic conditions, received cash assistance, was water secure and had waste management needs met was 3.9%. However, for another individual who was residing outside informal tented settlements, had preparatory education, two chronic conditions, did not receive cash assistance, was water insecure and had unmet waste management needs, was 25.7%.

Nearly half of participants who had COVID-19 infection (n=138[49.1%]) were diagnosed through PCR or lateral flow tests. The main reasons for not taking the tests were that they did not consider it necessary due to having COVID-19 symptoms (n=91[63.6%]), or they were unable to afford its cost (n=46[32.2%]) (Figure 3). No statistically significant associations were found between PCR testing and the participants' characteristics (appendix Table3; P4). In addition, 21 participants (7.4%) had the infection more than twice from the start of the pandemic until March 2022 (appendix Table4; P5). The most recent infection among participants occurred during the period of November 2020 to March 2022, with peaks during February 2021 (n=30[10.6%]), December 2021 (n=32[11.3%]), and January 2022 (n=32[11.3%]) (appendix Figure1; P5). During their last infection, 95.8% of participants stayed at home (n=271; median [IQR]: 3 weeks [2;4]), 90.8% wore a mask (n=257), 79.4%

used traditional remedies (garlic, ginger, anise tea) (n=224), 73.1% took medication prescribed by the doctor (n=207), 53% called (n=152) or visited a doctor or healthcare centre (n=151) and 43.8% went to the pharmacy (n=124) (appendix Table4; P5).

Discussion

During the period of November 2020 and March 2022, the prevalence of COVID-19 infection was 9.8% in this population of older Syrian refugees (95%CI: 8.7% to 10.9%). The predictive model identified from this study had good calibration and moderate discriminative ability and included six predictors of the infection: residency, education, number of chronic conditions, receiving cash assistance, household water insecurity and unmet waste management needs. Nearly half of the cases were diagnosed through PCR or lateral flow tests. The primary reasons for not taking the test were the perception that it was unnecessary due to having symptoms or the inability to afford it. Overall, there was high adherence to preventive measures during the period of infection, in addition to the consumption of prescribed medication or traditional remedies.

This study showed that the prevalence of COVID-19 infection among older Syrian refugees in Lebanon was 9.8%. A small-sample telephone survey which was similarly conducted in Lebanon by the Access Center for Human Rights, found that one-third of the 217 Syrian refugees contacted in April 2021 reported experiencing COVID-19 symptoms, most of whom were less than 44 years old. In addition, two nationwide population-based cross-sectional studies reported the prevalence of COVID-19 infection in Lebanon. The first study was based on a self-reported outcome and found a prevalence of 13.9% out of 1,119 participants, with a higher risk of infection among older adults.²⁶ The second study was based on lateral flow test and found a crude seroprevalence of 16.0%, with a slightly higher prevalence among those aged 60 years or older (18.5%). However, no statistically significant difference was found between the age groups.²⁷ The timeline of the most recent COVID-19 infection in this study is almost aligned with the epidemic curve of confirmed cases.³ These data showed that the prevalence of COVID-19 infection from our study of older Syrian refugees was lower than the national prevalence and could be due to an underestimation resulting from the lack of testing among this population.

Various obstacles to PCR testing at the individual, cultural, environmental, and financial levels were faced by Syrian refugees in Lebanon.¹⁵ The barriers identified in this study and others were mainly related to individuals' perceptions of lack of need or lack of affordability,^{15,26} despite the availability of free testing services and the national effort to raise awareness.¹⁵ Perceived stigma, discrimination, fear of deportation, and limited accessibility to testing centers were reported as additional barriers to testing among Syrian refugees in Lebanon.¹⁵ Given that nearly half of the participants visited doctors, healthcare services or pharmacies after getting infected, the implementation of COVID-19 screening in primary healthcare centers and pharmacies, could be an important strategy to control the spread of infection among Syrian refugees, as these settings are trusted sources and the front line of healthcare services.¹⁵ In addition, in future pandemics, due to the use of non-prescribed

medications and traditional remedies reported by older Syrian refugees, it will be important for humanitarian organizations to intensify their health promotion programs to increase awareness of testing availability and the importance of visiting a healthcare professional.

This study, focusing on older Syrian refugees in Lebanon, identified six predictors of COVID-19 infection with acceptable predictive abilities. These factors primarily pertain to socio-economic and health aspects, previously recognized in predictive models, such as education¹⁶ and the number of chronic conditions.^{16,17} Residency and receiving cash assistance emerged as unique factors within the refugee context. Notably, there is no prior research incorporating unmet waste management needs or water insecurity into prediction models, highlighting the added value of this study to the literature.

Contrary to previous findings higher level of education has been regarded as a protective factor against COVID-19,²⁸ while in this study higher education had an increased odds of COVID-19 infection. During the pandemic, the majority of Syrian refugees lost their jobs either permanently or temporarily, especially those engaged in semi-skilled and unskilled labour such as agriculture and construction.^{29,30} As a result, individuals in more skilled occupations, which are typically associated with higher education,²⁹ were relatively less likely to be laid-off. Consequently, Syrian refugees who had higher education, may have required close contact with others due to their job requirement, thereby increasing their risk to COVID-19 infection.

Having chronic conditions was identified as another predictor of COVID-19 infection. A systematic review examining the risk factors of COVID-19 in migrant populations suggested the presence of comorbidities could be associated with a higher risk of infection.³¹ This connection could be attributed to that individuals with chronic conditions often need to visit healthcare centers and hospitals for management, therefore increasing their risk of exposure to the virus.³¹

Insecurities in basic needs, such as water insecurity and unmet waste management needs, could contribute to the spread of COVID-19 infection through various pathways,¹⁶ These include inadequate access to safe drinking water, drinking insufficient quantity of water, and limitations in practicing essential hygiene measures such as handwashing, bathing, and cleaning surfaces.³² It is crucial to emphasize that the majority of Syrian refugees rely on humanitarian assistance to meet their essential needs, including water and sanitation.¹³ Consequently, the absence of this assistance could worsen their living conditions, and create opportunities for viral transmission within their households and communities.

Syrian refugees residing in informal tented settlements may be more easily reached by NGOs compared to those living in host communities.³³ As a result, reach of humanitarian programs including cash assistance, awareness campaigns, masks, hygiene kits and mobile clinics could reduce their risk of contracting the infection. These findings reinforce our previous recommendation, emphasizing the need for humanitarian organizations to redesign and expand their programs to ensure coverage for all refugees, including those living outside informal tented settlements, in order to address inequities and effectively control the pandemic.²¹

Given the limited number of social determinants identified for predicting infection, the model could serve as a quick, effective, and cost-efficient tool for humanitarian organizations to identify refugees at a higher risk of contracting the virus in future pandemics. Consequently, researchers and agencies collecting data on COVID-19 infection, coupled with the identified predictors, are encouraged to assess the model's performance in different contexts.

This study has several limitations, firstly, the self-reported data could lead to a risk of social desirability bias, whereby refugees could be overestimating adherence to preventive measures. Additionally, COVID-19 infection could be underreported due to their fear of stigma, leading to possible misclassification bias. Additional predictors for COVID-19 infection could be added to the model in order to improve its performance, but they were not included due to their time-dependent and context-specific nature, such as biological factors. Furthermore, the study sample represents beneficiaries from a specific humanitarian organization and may not be representative of all Syrian refugees in Lebanon.

In conclusion, the identified predictors could be used to target Syrian refugees at higher risk of COVID-19 infection and future infectious disease outbreaks particularly those who require to work, seek healthcare or live outside tented settlements. The provision of humanitarian assistance is crucial to improve living conditions and reduce vulnerability to infectious diseases in future pandemics. Furthermore, intensifying awareness campaigns and considering the implementation of screening measures in the community are essential to control the spread of the virus in this population.

Data sharing statement

The deidentified data could be shared upon request from NRC (nrc@nrc.no) and AUB (crph@aub.edu.lb).

Acknowledgments: The authors would like to thank Mrs. Noura Salibi and Miss Maria El Haddad for their support and expertise throughout all aspects of the research study, including data monitoring, cleaning and analysis. The authors would also like to acknowledge B.O.T (Bridge. Outsource. Transform) for their assistance in collecting the data required for the success of this study and the study participants for their participation.

Authors contributions: SA, HG, and SM conceptualized the study, obtained the primary funding for the study and designed the survey. SM obtained supplemental funding for this specific manuscript. SM, HG, SA, BA and TK contributed to data collection. BA contributed to the literature search and drafted the manuscript. The following drafts were reviewed and revised by SM, HG, BA and TK. The underlying survey data were verified by SM and BA. SM supervised BA and TK throughout the project. All authors have reviewed and approved the final version of the paper.

Conflicts of interest: The authors do not have any conflicts of interest to assert.

Funding:

This work was supported by ELRHA's Research for Health in Humanitarian Crisis (R2HC) Programme, which aims to improve health outcomes by strengthening the evidence base for public health interventions in humanitarian crises. R2HC is funded by the UK Foreign, Commonwealth and Development Office (FCDO), Wellcome, and the UK National Institute for Health Research (NIHR). The views expressed herein should not be taken, in any way, to reflect the official opinion of the NRC or ELRHA. The funder had no participation in the design and conduct of the study; collection, management, analysis, and interpretation of the data; preparation, review, or approval of the manuscript; and decision to submit the manuscript for publication.

This analysis was also funded by the University Research Board (Grant number: 104258) at the American University of Beirut (AUB).

Captions for figures

Figure 1: The flowchart of the study population

Figure 2: Calibration plot of the final model

Figure 3: The reasons for not being diagnosed on PCR or lateral test.

Labels: (1) Unable to afford PCR test/lateral flow; (2) I didn't think the test was necessary because I had covid-19 symptoms; (3) I didn't think the test was necessary because I had close contact with someone who had COVID-19; (4) Others; *Others include inability to access PCR testing centre, fear of diagnosis and absence of recommendation from doctors or healthcare professionals.

Online Appendix Content

Table 1: Survey questions on COVID-19 infection

Table 2: Survey questions for the candidate predictors

Table 3: Association between the characteristics of participants who had a COVID-19 infection and PCR testing

Table 4: Description of participant behaviours following the COVID-19 infection

Figure 1: Last occurrence of COVID-19 infection

Tables

Table 1: Characteristics of the study population and their association with the COVID-19 infection

	Total (n=2886)	Experiencing the COVID-19 infection				OR (95%CI)
		No [n=2603 (90.2%)]		Yes [n=283(9.8%)]		
	n (%)	n (%)	n (%)	n (%)		
Age median [Q1-Q3]	2886 56[52-62]	2603 56[52-62]	283 56[53-62]		1.00 (0.98; 1.01)	
Sex						
Male	1527 (52.9)	1377 (90.2)	150 (9.8)		ref	
Female	1359 (47.1)	1226 (90.2)	133 (9.8)		0.99 (0.78 ; 1.27)	
Residence						
Inside informal tented settlements	1125 (39.0)	1040 (92.4)	85 (7.6)		ref	
Outside informal tented settlements	1761 (61.0)	1563 (88.8)	198 (11.2)		1.55 (1.19 ; 2.02)	
Marital status						
Single, divorced or widowed	828 (28.7)	747 (90.2)	81 (9.8)		ref	
Engaged or married	2058 (71.3)	1856 (90.2)	202 (9.8)		1.00 (0.76 ; 1.32)	
Education						
Never attended school	1386 (48.2)	1276 (92.1)	110 (7.9)		ref	
Elementary	751 (26.1)	669 (89.1)	82 (10.9)		1.42 (1.05 ; 1.92)	
Preparatory and above	741 (25.7)	650 (87.7)	91 (12.3)		1.62 (1.21 ; 2.18)	
Missing	8	8	0			
Number of chronic conditions						
0 chronic condition	875 (31.1)	812 (92.8)	63 (7.2)		ref	
1 chronic condition	725 (25.8)	657 (90.6)	68 (9.4)		1.33 (0.93 ; 1.91)	
2 or more	1212 (43.1)	1065 (87.9)	147 (12.1)		1.78 (1.31 ; 2.42)	
Missing	74	69	5			
Receiving cash assistance						
Yes	2025 (70.3)	1840 (90.9)	185 (9.1)		ref	
No	856 (29.7)	759 (88.7)	97 (11.3)		1.27 (0.98 ; 1.65)	

Missing	5	4	1	
FIES Food insecurity				
Not food insecure	224 (8.1)	205 (91.5)	19 (8.5)	ref
Food insecure	2557 (91.9)	2306 (90.2)	251 (9.8)	1.17 (0.72 ; 1.91)
Missing	105	92	13	
Household Water Insecurity Experiences Scale				
No household water insecurity	1999 (69.5)	1826 (91.3)	173 (8.7)	ref
Household water insecurity	877 (30.5)	769 (87.7)	108 (12.3)	1.48 (1.15 ; 1.91)
Missing	10	8	2	
Waste management needs status				
Met	2369 (82.3)	2147 (90.6)	222 (9.4)	ref
Unmet	508 (17.7)	447 (88.0)	61 (12.0)	1.32 (0.98 ; 1.78)
Missing	0	9	0	
Having legal status documentation				
Not regularized	2172 (75.7)	1956 (90.1)	216 (9.9)	ref
Regularized	699 (24.3)	632 (90.4)	67 (9.6)	0.96 (0.72 ; 1.28)
Missing	15	15	0	

Table 2: Predictive model of at COVID-19 infection

Predictors	Lasso for prediction*		Lasso for inference**		
	Codes	Coefficients	OR	(95% CI)	P-value
Residency					
Inside informal tented settlements	0			<i>ref</i>	
Outside informal tented settlements	1	0.37	1.44	(1.08 ; 1.91)	0.012
Education					
Never attended school	0			<i>ref</i>	
Elementary	1	0.23	1.45	(1.02 ; 2.06)	0.036
Preparatory and above	2		1.64	(1.15 ; 2.35)	0.006
Number of chronic conditions					
0 chronic condition	0			<i>ref</i>	
1 chronic condition	1	0.27	1.34	(0.92 ; 1.95)	0.122
2 or more	2		1.74	(1.24 ; 2.44)	0.001
Receiving cash assistance					
Yes	0			<i>ref</i>	
No	1	0.17	1.21	(0.92 ; 1.59)	0.161
Household Water Insecurity Experiences Scale					
No household water insecurity	0			<i>ref</i>	
Household water insecurity	1	0.37	1.45	(1.11 ; 1.90)	0.006
Waste management needs status					
Met	0			<i>ref</i>	
Unmet	1	0.23	1.29	(0.94 ; 1.78)	0.109
Constant		-3.20			

*Lasso for prediction performed to report the coefficients used to calculate the predicted risk

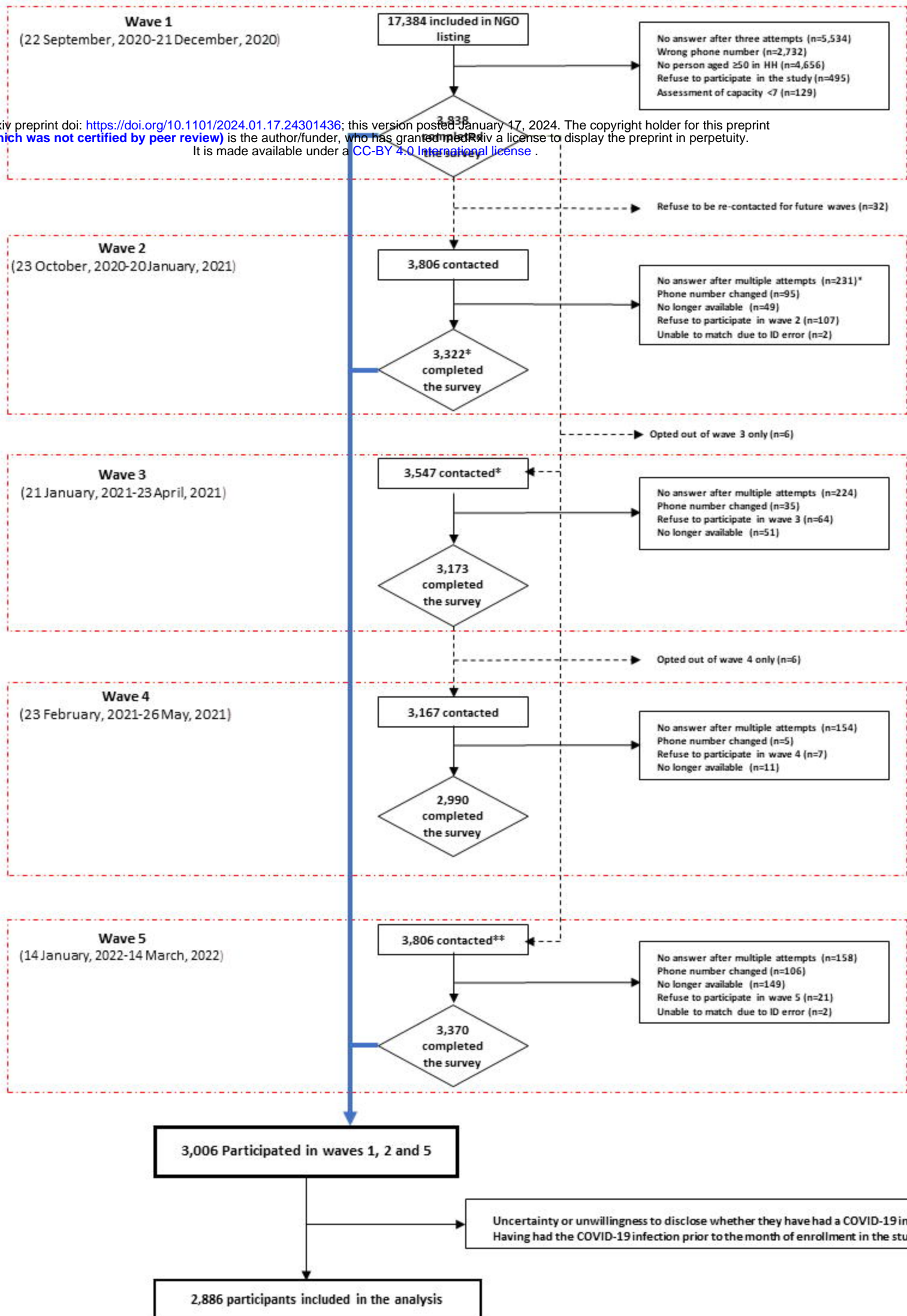
**Lasso for inference was used to report the odds ratio and 95% confidence interval

References

1. Wynants L, Van Calster B, Collins GS, et al. Prediction models for diagnosis and prognosis of covid-19: systematic review and critical appraisal. *Bmj* 2020; **369**: m1328.
2. Wang Z, Tang K. Combating COVID-19: health equity matters. *Nat Med* 2020; **26**(4): 458.
3. World Health Organization. WHO Coronavirus (COVID-19) Dashboard. 2023. <https://covid19.who.int/> (accessed December 19, 2023).
4. Oxfam. Pandemic of greed: A wake-up call for vaccine equity at a grim milestone, 2022.
5. Saarinen S, Moustgaard H, Remes H, Sallinen R, Martikainen P. Income differences in COVID-19 incidence and severity in Finland among people with foreign and native background: A population-based cohort study of individuals nested within households. *PLoS Med* 2022; **19**(8): e1004038.
6. Morisod K, Grazioli VS, Schlüter V, et al. Prevalence of SARS-CoV-2 infection and associated risk factors among asylum seekers living in asylum centres: A cross-sectional serologic study in Canton of Vaud, Switzerland. *J Migr Health* 2023; **7**: 100175.
7. Hajjar MS, Abu-Sittah GS. The multidimensional burden of COVID-19 on Syrian refugees in Lebanon. *J Glob Health* 2021; **11**: 05003.
8. McCall SJ, El Khoury T, Salibi N, et al. Development of a Prediction Model for the Management of Noncommunicable Diseases Among Older Syrian Refugees Amidst the COVID-19 Pandemic in Lebanon. *JAMA Netw Open* 2022; **5**(10): e2231633.
9. Wang B, Li R, Lu Z, Huang Y. Does comorbidity increase the risk of patients with COVID-19: evidence from meta-analysis. *Aging (Albany NY)* 2020; **12**(7): 6049-57.
10. May M. Coronavirus: charities cannot meet surge in demand without urgent government funding. 31 March 2020 2020. <https://fundraising.co.uk/2020/03/31/coronavirus-charities-cannot-meet-surge-in-demand-without-urgent-government-funding/> (accessed July 14, 2023).
11. UNHCR. UNHCR seeks US\$255 million to respond to COVID-19 outbreak. 25 March 2020 2020. <https://www.unhcr.org/news/stories/unhcr-seeks-us255-million-respond-covid-19-outbreak>.
12. UNOCHA. Adapting the global humanitarian response to COVID-19. 2020. https://www.unocha.org/story/adapting-global-humanitarian-response-covid-19?gclid=CjwKCAjw5MOlBhBTEiwAAJ8e1tSyOyYyIS3_6fBcLb2VCd0uRcYodMqY1p6Za0VO2uyfnduOcZqofhoCB2UQAvD_BwE (accessed Jul 14, 2023).
13. UNHCR, UNICEF, WFP. VASyR 2022: Vulnerability Assessment of Syrian Refugees in Lebanon. 2023.
14. Human Rights Watch. Lebanon: Armed Forces Summarily Deporting Syrians. 2023. <https://www.hrw.org/news/2023/07/05/lebanon-armed-forces-summarily-deporting-syrians#:~:text=In%20a%20letter%20to%20Human,the%20Higher%20Defense%20Council%27s%20decision.> (accessed 8/4/2023 2023).
15. Ghaddar A, Khandajji S, Kansoun R, Ghassani A. Access of Syrian refugees to COVID-19 testing in Lebanon. *East Mediterr Health J* 2023; **29**(1): 15-23.
16. Rozenfeld Y, Beam J, Maier H, Haggerson W, Boudreau K, Carlson J, Medows R. A model of disparities: risk factors associated with COVID-19 infection. *Int J Equity Health* 2020; **19**(1): 126.
17. Jehi L, Ji X, Milinovich A, et al. Individualizing Risk Prediction for Positive Coronavirus Disease 2019 Testing: Results From 11,672 Patients. *Chest* 2020; **158**(4): 1364-75.
18. Collins GS, Reitsma JB, Altman DG, Moons KG. Transparent reporting of a multivariable prediction model for individual prognosis or diagnosis (TRIPOD): the TRIPOD statement. *Bmj* 2015; **350**: g7594.
19. von Elm E, Altman DG, Egger M, Pocock SJ, Gøtzsche PC, Vandenbroucke JP. The Strengthening of Reporting of Observational Studies in Epidemiology (STROBE) Statement: guidelines for reporting observational studies. *Int J Surg* 2014; **12**(12): 1495-9.
20. Jeste DV, Palmer BW, Appelbaum PS, et al. A new brief instrument for assessing decisional capacity for clinical research. *Arch Gen Psychiatry* 2007; **64**(8): 966-74.

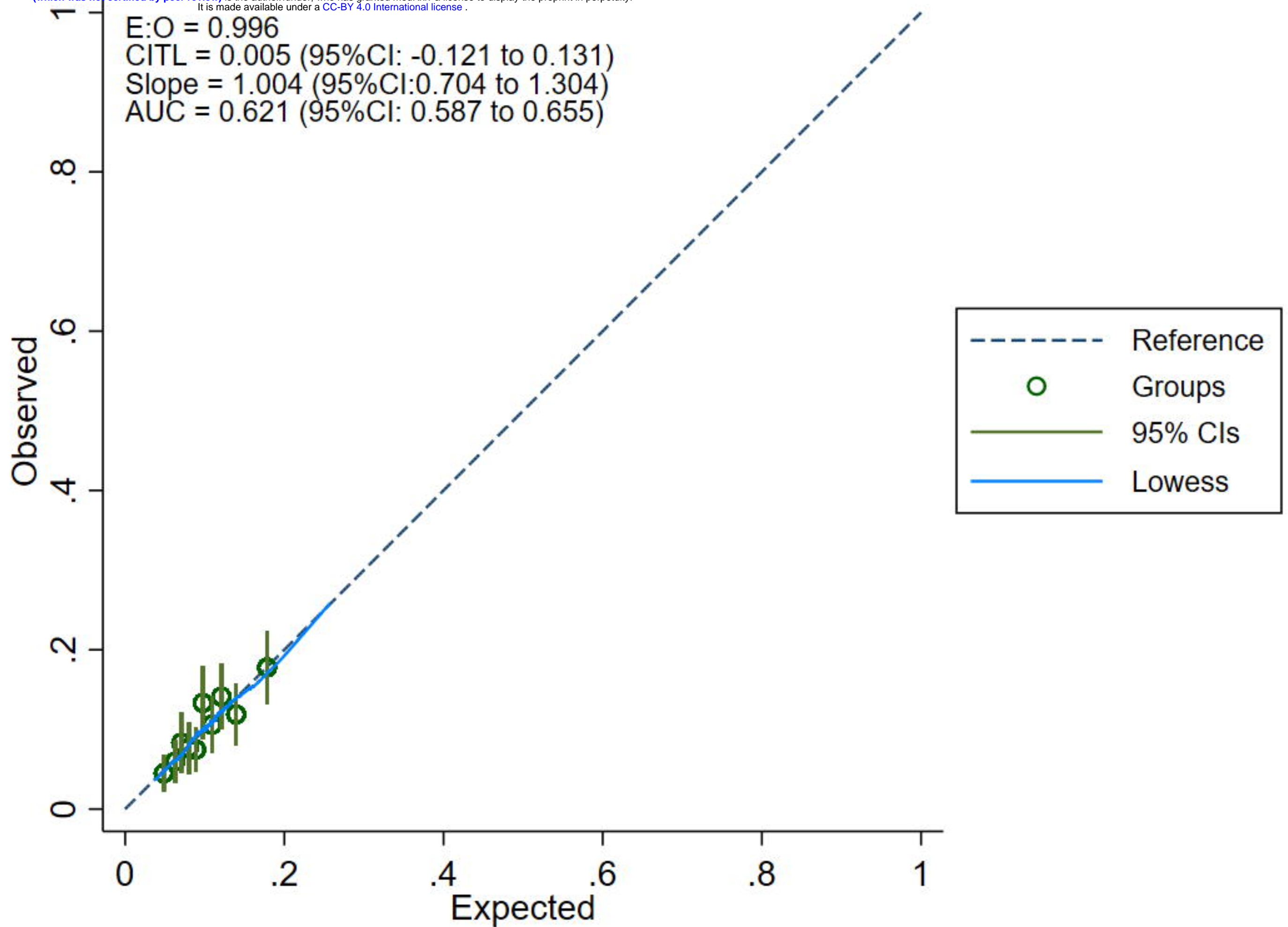
21. Abi Zeid B, El Khoury T, Ghattas H, et al. Predictors and barriers to vaccination among older Syrian refugees in Lebanon: a cross-sectional analysis of a multi-wave longitudinal study. *Lancet Healthy Longev* 2023; **4**(5): e219-e27.
22. Cafiero C, Viviani S, Nord M. Food security measurement in a global context: The Food Insecurity Experience Scale. *Measurement* 2017; **116**.
23. Young SL, Boateng GO, Jamaluddine Z, et al. The Household Water InSecurity Experiences (HWISE) Scale: development and validation of a household water insecurity measure for low-income and middle-income countries. *BMJ Glob Health* 2019; **4**(5): e001750.
24. Tibshirani R. Regression Shrinkage and Selection via the Lasso. *Journal of the Royal Statistical Society Series B (Methodological)* 1996; **58**(1): 267-88.
25. Stata Corp. Stata Statistical Software: Release 15. College Station, TX: StataCorp LLC.; 2017.
26. Sakr F, Maalouf A, Msallem E, et al. A cross-sectional study of knowledge, attitude, behaviour and preventive measures for COVID-19 infection in Lebanon. *East Mediterr Health J* 2023; **29**(4): 295-301.
27. Hoballah A, El Haidari R, Siblany G, Abdel Sater F, Mansour S, Hassan H, Abou-Abbas L. SARS-CoV-2 antibody seroprevalence in Lebanon: findings from the first nationwide serosurvey. *BMC Infect Dis* 2022; **22**(1): 42.
28. Kim SB, Jeong IS. Social determinants related to COVID-19 infection. *Nurs Health Sci* 2022; **24**(2): 499-507.
29. International Labour Organization. Assessment Of The Impact Of Syrian Refugees In Lebanon And Their Employment Profile, 2013.
30. Kattaa M. Impact of COVID-19 on Syrian refugees and host communities in Jordan and Lebanon: International Labour Organization, 2020.
31. Hayward SE, Deal A, Cheng C, et al. Clinical outcomes and risk factors for COVID-19 among migrant populations in high-income countries: A systematic review. *J Migr Health* 2021; **3**: 100041.
32. Stoler J, Miller JD, Brewis A, et al. Household water insecurity will complicate the ongoing COVID-19 response: Evidence from 29 sites in 23 low- and middle-income countries. *International Journal of Hygiene and Environmental Health* 2021; **234**: 113715.
33. REACH, UNHCR. Comparative Analysis of Syrian Refugees Staying In and Outside Camps: Kurdistan Region of Iraq Multi-Sector Needs Assessment Factsheet, September 2014, 2014.

medRxiv preprint doi: <https://doi.org/10.1101/2024.01.17.24301436>; this version posted January 17, 2024. The copyright holder for this preprint (which was not certified by peer review) is the author/funder, who has granted medRxiv a license to display the preprint in perpetuity. It is made available under a [CC-BY 4.0 International license](https://creativecommons.org/licenses/by/4.0/).

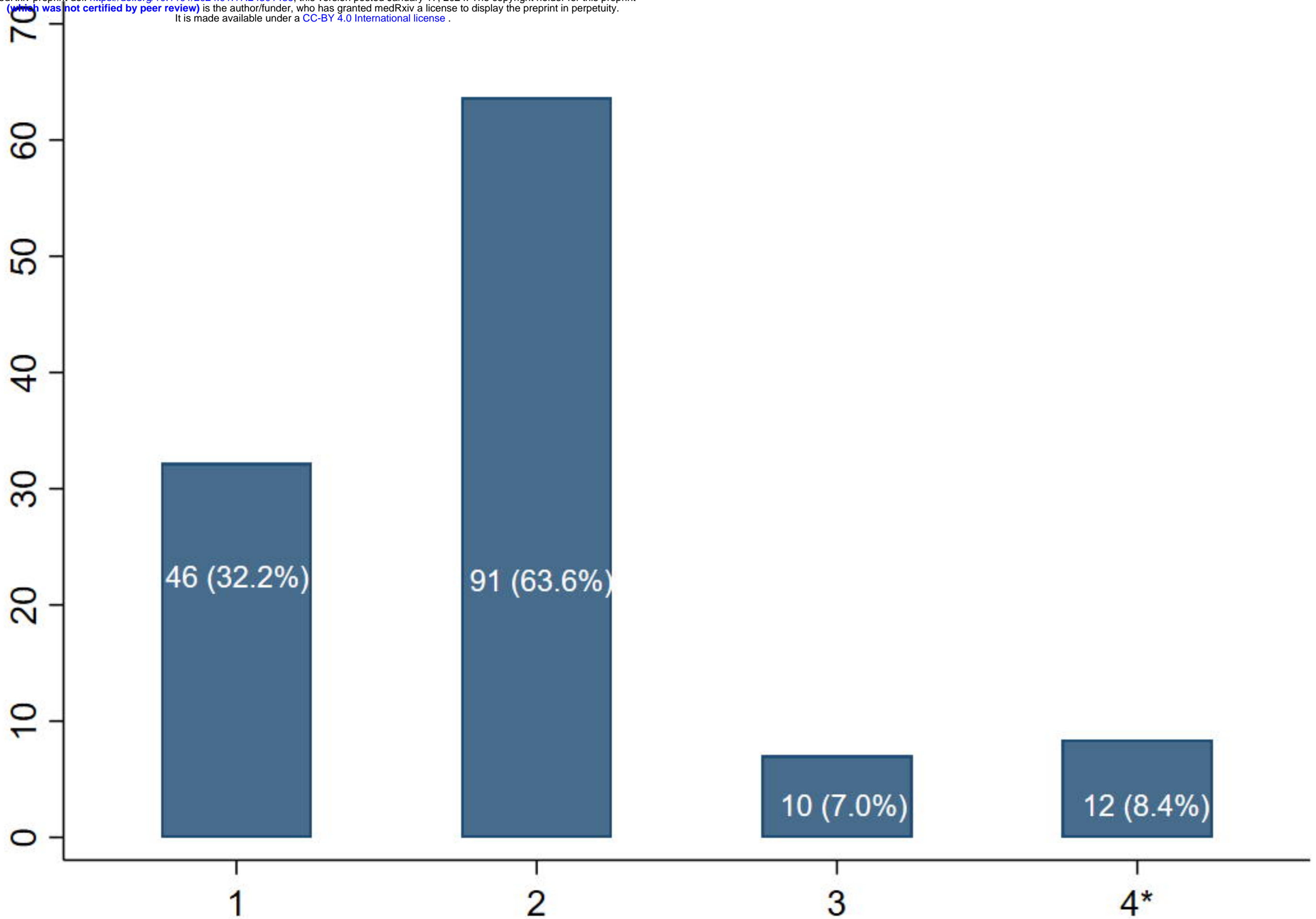


*Wave 3 included all participants who participated in wave two, and those who didn't answer after multiple attempts at wave 2

**All participants who provided consent in wave one were re-contacted at wave five



Percentages



Reasons for not being diagnosed on PCR or lateral flow test