

1 Impact of emerging SARS-CoV-2 on total and cause-specific maternal mortality: A natural  
2 experiment in Chile during the peak of the outbreak

3 Short Title: SARS-CoV-2 Impact on Maternal Mortality: Chile's Outbreak Study

4

5 Yordanis Enriquez<sup>1</sup>, María Elena Critto<sup>2</sup>, Ruth Weinberg<sup>3</sup>, Lenin de Janon Quevedo<sup>2</sup>, Aliro  
6 Galleguillos<sup>4</sup>, Elard Koch<sup>5\*</sup>

7

8 <sup>1</sup> Facultad de Ciencias de la Salud, Universidad Católica Sedes Sapientiae, Lima, Peru

9 <sup>2</sup> Facultad de Ciencias Médicas, Pontificia Universidad Católica, Buenos Aires, Argentina

10 <sup>3</sup> Facultad de Medicina, Universidad Nacional de Buenos Aires, Buenos Aires, Argentina

11 <sup>4</sup> Facultad de Medicina, Universidad de Chile, Santiago de Chile, Chile

12 <sup>5</sup> MELISA Institute, Concepcion, Chile

13

14 \*Corresponding author: Elard Koch. E-mail: [ekoch@melisainstitute.org](mailto:ekoch@melisainstitute.org)

15

16 Abstract

17 Background

18 This study estimated the effects of the SARS-CoV-2 pandemic on maternal death causes in Chile  
19 during the outbreak peak between 2020 and 2021.

20 Materials and Methods

21 A natural experiment was conducted using official data on maternal deaths and live births (LBs)  
22 between 1997 and 2021. Trend changes in the maternal mortality ratio (MMR) were assessed  
23 using segmented regression. The effects of the SARS-CoV-2 outbreak were evaluated using

24 interrupted time series (ITS) and an autoregressive integrated moving average (ARIMA) model to  
25 forecast the expected rates on MMR and 95% confidence intervals (95% CI).

## 26 Findings

27 ITS analysis revealed that the SARS-CoV-2 outbreak impacted the MMR due to indirect causes,  
28 with a greater increase in indirect nonrespiratory causes than respiratory causes. The ARIMA  
29 forecast was consistent with ITS, showing that the expected MMR for indirect causes was  
30 substantially lower than the observed rates (9.65 in 2020 and 7.46/100,000 LBs in 2021). The  
31 expected MMR was 3.44 in 2020 and 1.55 in 2021. For nonrespiratory causes, the observed  
32 values of the MMR for 2020 (8.77/100.000 LBs) and 2021 (7.46/100.000 LBs) doubled the  
33 prediction 4.02 (95% CI: 0.44-7.61) and 3.83 (95% CI: -0.12-7.79). No significant effect was found  
34 on direct obstetrical deaths.

## 35 Interpretation

36 During 2020-2021, there was a rise in the MMR in Chile attributable to SARS-CoV-2. The  
37 pandemic contributed to an escalation in the MMR due to indirect causes, particularly  
38 nonrespiratory and infectious causes, suggesting that the risk of pregnant women to SARS-CoV-2  
39 was increased from previous comorbidities.

## 40 Funding

41 This study was supported by FISAR.

42

## 43 Keywords

44 Maternal mortality; Infectious diseases; SARS-CoV-2; Pandemic, Maternal Health, Latin America

45

46 Introduction

47 At the end of January 2020, the World Health Organization (WHO) declared an outbreak of a new  
48 coronavirus (SARS-CoV-2), classifying it as a public health emergency of international  
49 importance and later a pandemic.<sup>1</sup> The responses to the pandemic varied greatly among  
50 countries and were influenced by factors such as available resources, protection and prevention  
51 supplies, training and preparation of health personnel, data monitoring, health system integration,  
52 availability of critical beds and mechanical ventilators, and accessibility to medical services.<sup>2</sup>

53 In addition, despite the measures taken to prioritize access to health in the population in the face  
54 of SARS-CoV-2, a decrease in the use of medical services during the pandemic was observed in  
55 some middle- and low-income countries.<sup>3</sup> The increase in mortality from SARS-CoV-2 unevenly  
56 affected vulnerable populations, such as elderly people living in nursing homes and people with  
57 preexisting diseases and comorbidities.<sup>4</sup> The statistical data of each country and the scientific  
58 analysis thereof allow us to observe how the SARS-CoV-2 pandemic has had direct and indirect  
59 impacts on the health of the population worldwide, on access to services, and, in particular, on  
60 mortality.<sup>3,5</sup> In this sense, the data from the mortality registers and their analysis through natural  
61 experiments allow us to establish the magnitude of the specific impact that the pandemic has had  
62 on total and cause-specific mortality.

63 The pandemic has notably impacted preventable deaths, including maternal deaths, thereby  
64 interrupting the progress observed in recent decades in reducing maternal mortality (MM)  
65 worldwide.<sup>6</sup> In light of this, the WHO responded by issuing an epidemiological alert. This alert  
66 highlighted a higher risk of severe clinical manifestations of SARS-CoV-2 among pregnant  
67 women.<sup>7</sup>

68 Responding to the same crisis, in February 2020, the Ministry of Health of Chile decreed a Health  
69 Alert for the whole country to take measures to deal with the epidemic in its early stage.<sup>8</sup> Despite  
70 having a relatively low maternal mortality ratios (MMR: 19.1/100,000 LBs in 2019) compared to  
71 other countries in the region, at the national level, the excess of MM from causes that could be  
72 attributable to SARS-CoV-2 has not yet been estimated. Such an estimate would provide not only  
73 a measure of the MM attributable to the virus but also of the effect it had on maternal mortality

74 from specific causes.<sup>9</sup> In addition, the comparison between maternal mortality data prior to the  
75 pandemic period and those attributable to the pandemic makes it possible to clarify the relevance  
76 of the impact on diverse groups of MM causes. This information is crucial for the development  
77 and execution of strategic programs and policies aimed at identifying and mitigating preventable  
78 diseases and deaths.

79 Given these scenario, our study proposed to assess the impact of the SARS-CoV-2 pandemic on  
80 the total and cause-specific MMR during its first two years in Chile. To achieve this, we employed  
81 a time-series design exploiting long-term annual trend information and used ARIMA models to  
82 forecast expected mortality under the hypothesis that previous mortality trends would continue in  
83 the absence of the pandemic virus-related mortality burden.

## 84 Methods

### 85 Study design and data sources

86 This was a study with an observational and ecological design using official maternal mortality data  
87 at the national level.

88 Time series of population data on maternal deaths from 1997 to 2021 published in database  
89 format by the Department of Health Statistics and Information (DEIS) of the Ministry of Health of  
90 Chile were prepared.<sup>10</sup> The death records for 2020 and 2021 corresponded to provisional data  
91 updated by this organization on May 17, 2022. However, corrected live births came from the  
92 National Institute of Statistics of the same country, published in the Vital Statistics Yearbooks.<sup>11</sup>

### 93 Study variables

94 The total maternal mortality ratio (MMR) was calculated as the ratio of maternal deaths (ICD-10:  
95 Codes O00 to O99, excluding codes O96 and O97) to the number of corrected live births,  
96 multiplied by 100,000. The MMR was categorized into groups of direct and indirect obstetric  
97 causes (Figure 1).

98

99 Figure 1: Flowchart of maternal mortality classified by cause groups

100 The MMR due to direct obstetric causes referred to maternal deaths resulting from obstetric  
101 complications during pregnancy, childbirth, and the postpartum period, as well as from  
102 interventions during these stages (ICD-10: Codes O00 to O99, excluding O98 and O99).<sup>11,12</sup> The  
103 rate was calculated per 100,000 live births.

104 The MMR due to indirect obstetric causes included deaths that resulted from a preexisting disease  
105 or one that developed during pregnancy and was exacerbated by the physiological effects of  
106 pregnancy.<sup>13</sup> This category of maternal deaths (ICD-10: Codes O98 and O99) per 100,000 live  
107 births was further divided into indirect respiratory and nonrespiratory obstetric causes.

108 The indirect respiratory obstetric MMR included maternal deaths caused by diseases of the  
109 respiratory system that were exacerbated during pregnancy, childbirth, and puerperium (ICD-10:  
110 Code O99.5). The indirect nonrespiratory obstetric MMR comprised all deaths from indirect  
111 causes, except for respiratory complications. Within this subgroup, it was possible to identify  
112 indirect infectious causes (ICD-10: O98) and indirect noninfectious causes (ICD-10: O99, except  
113 O99.5).

114 In Chile, following WHO suggestions, maternal deaths aggravated by SARS-CoV-2 were  
115 assigned to code O98.5 (nonrespiratory infectious indirect) accompanied by codes U07.1 and  
116 U07.2, depending on confirmation of the presence or absence of the virus.<sup>12,13</sup>

117 For the subgroups of respiratory and infectious causes of maternal mortality, due to the low  
118 frequency of events, the maternal mortality rate was amplified by 1,000,000 LBs. For the years in  
119 which no cases were reported, one case per 1,000,000 LBs was attributed.

120

121 Statistical analysis

122 Analysis of MMR trends was performed with linear logarithmic regression using the Joinpoint  
123 Regression Program version 4.9.1.0 (Surveillance Research Program, National Cancer Institute)  
124 to identify the number and location of joinpoints (hereafter referred to as “joinpoints” or “junction  
125 points”) that represent the moments of trend change. In the same fashion, the estimated annual  
126 percent change (APC) of the variables for each time segment was calculated, as well as the  
127 average annual percent change (AAPC) for the entire period studied. The calculation of these

128 estimates has already been described in detail elsewhere.<sup>14</sup> The Joinpoint Regression Program  
129 does not allow analysis of dependent variables with values equal to zero for one or more years.  
130 Consequently, no results of this analysis were introduced for the MMR due to indirect respiratory  
131 causes or the MMR due to indirect infectious causes caused by the absence of maternal deaths  
132 reported for some periods.

133 The effect of the SARS-CoV-2 pandemic on different maternal mortality groups was first assessed  
134 using an interrupted time-series (ITS) approach in parallel trends in cause-specific mortality.

135 Three coefficients were estimated in this model:  $\beta_0$  represents a constant or starting point for the  
136 variable of interest;  $\beta_1$  is the change in outcome associated with an increase in the unit of time  $T_t$ ,  
137 which is interpreted as the preintervention trend;  $\beta_2$  is the level of immediate change after the  $X_t$   
138 intervention, which is specified as a dummy variable (preintervention period = 0 and  
139 postintervention period = 1); and  $\beta_3$  indicates the change in slope after the intervention with  
140 respect to the initial trend.

141 The ITS model considered the occurrence of a natural event such as the SARS-CoV-2 pandemic  
142 and assessed significant immediate trends and changes or sizes of effects attributable to the  
143 event of interest using the linear minimum squares method. Coefficients with standard  
144 Newey–West errors were estimated to evaluate autocorrelation and possible heteroscedasticity.

145 The effect of the SARS-CoV-2 pandemic on the MMR was then estimated with an autoregressive  
146 integrated moving average (ARIMA) model.<sup>14</sup> First, the stationarity of the time series was  
147 analysed using the Dickey-Fuller test. The use of the ARIMA model avoided overestimating the  
148 statistical significance of the effect of the intervention produced by autocorrelation. The effect of  
149 SARS-CoV-2 on the variables of interest was evaluated with a forecast for the years 2020 and  
150 2021 as if this had not been verified in 2020, thus calculating an estimate of the expected MMR  
151 in the absence of the pandemic for those two years. First, for the series, a one-step-ahead training  
152 set was determined for the years 2015-2019. Then, the forecasts were compared with observed  
153 annual MMR values, identifying a difference in mortality attributable to the pandemic. For the  
154 MMR due to respiratory causes, no prediction was made for 2021, as no maternal deaths were  
155 reported in this group for this year.

156 Subsequently, to evaluate the accuracy of the prediction of the different models, the mean  
157 absolute error (MAE) was determined. The MAE depends on the prediction measurement scale  
158 and is therefore expressed in the same unit of measure as the analysed data, giving the size of  
159 the prediction error with an average of the difference between prediction and observation. In  
160 addition, the mean absolute percent error of prediction (MAPE) was estimated. This expresses  
161 the percentage of error attributable to the prediction and does not depend on the measurement  
162 scale of the observed data. However, this metric takes on an undefined value when zero values  
163 exist in the analysed series. The following categorization was assumed to determine the predictive  
164 ability of the models: MAPE <10 (highly accurate prediction), 10-20 (good prediction), 20-50  
165 (reasonable prediction), and >50 (inaccurate prediction). Likewise, the percentage accuracy of  
166 the predictions was calculated by subtracting the magnitude of the error expressed in the MAPE  
167 from 100 to express the variability explained by the model. In these analyses, the software Stata  
168 version 15.1® (Stata Corp, College Station) was used, and the corresponding 95% confidence  
169 intervals (95% CIs) were estimated for the measurements.

#### 170 Ethical approval

171 This study used aggregated public data. The source of the information is the official maternal  
172 mortality records of Chile published by the DEIS (available at <https://deis.minsal.cl/>). The data  
173 was anonymised in the source. The study protocol was approved by the Ethics Committee of the  
174 Catholic University Sedes Sapientiae, Lima, Peru.

175

#### 176 Role of the funding source

177 The funder of this study had no role in the decision for publication, study design, data collection,  
178 data analysis, data interpretation, or writing of the report.

179

#### 180 Results

##### 181 Segmented linear regression analysis

182 Table 1 details the joinpoint analysis of MMR trends by cause group between 1997 and 2021. In  
183 the global MMR, a continuous downward trend was observed from 1997 to 2003, with an annual

184 decrease of 6.09% (95% CI: -10.7 - -1.2). The first turning point in the curve was identified in  
185 2003, while the year 2017 marked a second change in the slope. An annual growth of 2.89% was  
186 observed from 2003 to 2017 (95% CI: 1.3-4.5). As of this year, the trend decreased again annually  
187 by 5.60% (95% CI: -14.1 - -3.8) until 2021. The average annual percent change (AAPC) for the  
188 period evaluated was -0.9% (95% CI: -2.9-1.2).



189

190 Table 1. Segmented linear regression analyses to model trends and joinpoints for the total MMR and cause specific MMRs groups in Chile, 1997-2021

	Years	APCs	p-value	95% CI	Joinpoint	95% CI
MMR total						
trend 1	1997-2003	-6.09	0.01	-10.7--1.2	-	-
trend 2	2003-2017	2.86	<0.001	1.3-4.5	2003	1999-2010
trend 3	2017-2021	-5.60	0.21	-14.1-3.8	2017	2002-2019
AAPC	1997-2021	-0.9	0.39	-2.9-1.2	-	-
MMR by direct causes						
trend 1	1997-2003	-9.24	<0.001	-12.8--5.5	-	-
trend 2	2003-2010	1.10	0.57	-2.9-5.3	2003	1999-2006
trend 3	2010-2017	8.08	0.001	3.8-12.5	2010	2002-2016
trend 4	2017-2021	-15.29	<0.001	-21.5- -8.6	2017	2015-2019
AAPC	1997-2021	-2.60	0.01	-4.6--0.5	-	-
MMR by indirect causes						
trend 1	1997-2013	5.20	0.01	1.4-9.2	-	-
trend 2	2013-2016	-28.81	0.47	-73.0-88.0	2013	2002-2015
trend 3	2016-2021	25.79	0.04	1.2-56.3	2016	2014-2019
AAPC	1997-2021	4.0	0.53	-8.1-17.4	-	-
MMR by indirect respiratory causes *						
	-	-	-	-	-	-
MMR by indirect non-respiratory causes						
trend 1	1997-2013	5.47	0.00	1.6-9.5	-	-
trend 2	2013-2016	-27.25	0.50	-72.5-92.5	2013	2000-2015
trend 3	2016-2021	24.49	0.04	0.1-54.7	2016	2012-2019
AAPC	1997-2021	4.20	0.50	-7.8-17.8	-	-
MMR by indirect infectious causes *						
	-	-	-	-	-	-
MMR by indirect non-infectious causes						
trend 1	1997-2006	14.40	0.01	3.4-26.6	-	-
trend 2	2006-2021	-4.20	0.07	-8.6-0.4	2006	2003-2012
AAPC	1997-2021	2.4	0.30	-2.1-7.1	-	-

191 APC: Annual Percentage Change; AAPC: Average Annual Percentage Change; 95% CI, 95% confidence interval

192 \* Variable with values equal to zero for one or more years prevents analysis with Joinpoint Regression Program.

193 The MMR due to direct obstetric causes presented three inflection points, one in 2003, another  
194 in 2010 and the last in 2017, separating the study period into four segments. There was an annual  
195 decline of 9.24% between 1997 and 2003 and an annual growth trend of 1.10% between 2003  
196 and 2010 ( $p=0,57$ ) and 8.08% between 2010 and 2017. From this year on, the trend again  
197 decreased annually by 15.29% between 2017 and 2021. The AAPC was -2.6% (95% CI: -4.6 - -  
198 0.5). This decrease in the AAPC was greater than that observed in the global MMR.

199 Two inflection points were observed for the MMR due to indirect obstetric causes in 2013 and  
200 2016. Both points delimited the only time segment that resulted in a 28.81% reduction (95% CI:  
201 73.0-88.0,  $p=0,47$ ). An increase of 5.20% was observed (95% CI: 1.4-9.2) between 1997 and  
202 2013, and an increase of 25.79% (95% CI: 1.2-56.3) was observed between 2016 and 2021. The  
203 AAPC for the entire period evaluated showed an increase of 4.0% (95% CI: -8.1-17.4). Among  
204 indirect obstetric causes, the nonrespiratory MMR showed two inflection points in the same years.  
205 An annual increase of 5.47% was observed between 1997 and 2013, followed by an annual  
206 decrease of 27.25% between 2013 and 2016 ( $p=0,50$ ), and this trend reversed from 2016, with  
207 an annual increase of 24.49% between 2016 and 2021. The AAPC was 4.2% (95% CI: -7.8-17.8).  
208 Finally, among indirect nonrespiratory obstetric causes, noninfectious obstetric causes presented  
209 a single point of inflection in 2006, preceded by a time segment with an increase of 14.40% per  
210 year (95% CI: 3.4-26.6). The AAPC was 2.4% (95% CI: -2.1-7.1).

211

## 212 Interrupted time series analysis

213 The effect of SARS-CoV-2 in 2020 on the diverse groups of the MMR is detailed in Table 2 and  
214 plotted in Figure 2. Thus, the interrupted time series (ITS) analysis revealed that the total MMR  
215 had a significant level change in 2020, corresponding to 3.69 (95% CI: 0.71-6.67) deaths per  
216 100,000 LBs. However, in the period immediately after, this trend showed a significant decreasing  
217 change of 8.46 deaths per 100,000 LBs (95% CI: -8.73- -8.20) (Figure 2a).

218

219 Table 2. Effect of the SARS-CoV-2 Pandemic in 2020 on the total maternal mortality ratio (MMR) and by groups of mortality groups of causes, in Chile,  
220 1997-2021. Interrupted time series analysis

	Initial slope			Change in level			Slope change			Segment 2020-2021		
	$\beta_1$	95% CI	p value	$\beta_2$	95% CI	p-value	$\beta_3$	95% CI	p value	$\beta_4$	95% CI	p value
MMR total	0.13	-0.13-0.39	0.32	3.69	0.71-6.67	0.01	-8.46	-8.73- -8.20	<0.000	-8.33	-	-
MMR by groups of causes												
Direct causes	0.10	-0.25- 0.46	0.56	-0.67	-5.04-3.70	0.75	-6.24	-6.60- -5.88	<0.000	-6.14	-6.14 - -6.15	<0.000
Indirect causes	0.02	-0.10-0.16	0.66	4.36	2.48-6.24	<0.000	-2.22	-2.35- -2.08	<0.000	-2.19	-	-
Indirect respiratory causes	-0.01	-0.03- - 0.00	0.15	0.76	0.51-1.01	<0.000	-0.85	-0.87- -0.83	<0.000	-0.86	-0.87- -0.86	<0.000
Indirect non-respiratory causes	0.04	-0.07-0.16	0.24	3.59	1.91-5.27	<0.000	-1.35	-1.47- -1.23	<0.000	-1.31	-	-
Indirect infectious causes	-0.02	-0.05-0.00	0.06	2.93	2.63-3.23	<0.000	2.22	2.19-2.25	<0.000	2.19	2.19-2.20	<0.000
Indirect non-infectious causes	0.69	-0.05-0.19	0.27	0.65	-1.00-2.31	0.42	-3.58	-3.70-3.45	<0.000	-3.51	3.51-3.52	<0.000

221 MMR: Maternal Mortality Ratio per 100,00 live birth;  $\beta_1$ : pending before the intervention;  $\beta_2$ : level change in the period immediately after the start of the  
222 intervention;  $\beta_3$ : interaction term between the time from the start of the study and the variable that represents the pre- and post-intervention periods,  
223 indicating an effect over time;  $\beta_4$ : calculated trend of the model through the linear combination of coefficients ( $\beta_1 + \beta_3$ ).  
224

225 Figure 2: Interrupted time series analyses used to evaluate the effect of the 2020 SARS-CoV-2 pandemic on the total maternal mortality ratio (a) and  
226 maternal mortality ratios due to total direct causes (b), total indirect causes (c), respiratory causes (d), non-respiratory causes (e), infectious causes (f),  
227 non-infectious causes (g), using official records from 1997-2021. Vertical lines represent the year for the emergence of the pandemic SARS-CoV-2  
228 influenza virus. A significant change in level due to the pandemic was identified for a, c, d, e, f, and g. However, there was no evidence of a slope change  
229 for b. An increase was observed in the following year for f, suggesting that the outbreak had an impact on mortality due to indirect causes.

230

231 Regarding the direct-cause MMRs, the only significant segment was in the period after 2020, with  
232 -6.24 deaths per 100,000 LBs (95% CI: -6.60- -5.88) (Figure 2b). In contrast, the MMR due to  
233 indirect obstetric causes reported a significant level change of 4.36 deaths per 100,000 LBs (95%  
234 CI: 2.48-6.24) in 2020 (Figure 2c). Then, in the period immediately after, the trend decreased by  
235 2.22 deaths per 100,000 LBs (95% CI: -2.35- -2.08).

236 Within the indirect MMR, the group of indirect nonrespiratory causes showed a greater level  
237 change in 2020 (Figure 2e) compared to the group of indirect respiratory causes (Figure 2d) (3.59  
238 per 100,000 LBs vs. 0.76 per 100,000, respectively). However, in the period after 2020, both  
239 groups of indirect maternal deaths showed a significant decrease in the trend, being of greater  
240 magnitude in the group of nonrespiratory causes (1.35 per 100,000 LBs vs. 0.85 per 100,000,  
241 respectively).

242 On the other hand, the MMR due to indirect infectious causes reported statistically significant  
243 changes in the trend, with a significant change in level in 2020 of 2.93 deaths per 100,000 LBs  
244 (95% CI: 2.63-3.23), followed by an annual increase of 2.22 deaths per 100,000 LBs (95% CI:  
245 2.19-2.25), in the period immediately after the onset of the pandemic (Figure 2f). In a similar vein,  
246 the MMR due to indirect noninfectious causes showed a significant decreasing change only in the  
247 period after 2020, with 3.58 deaths per 100,000 LBs (95% CI: -3.70-3.45) (Figure 2g).

248 Forecast of the MMR with ARIMA models

249 The graphical inspection of the time series indicated the presence of trends in all groups of MMRs.  
250 In this way, the seasonality and subsequent differentiation of the time series of the mortality  
251 groups were verified. Supplementary Table S1 reports the parameters considered for the  
252 assessment of the models selected for the forecasts. For this purpose, the highest logarithm of  
253 likelihood, the lowest Akaike information criterion (AIC), and the lowest Bayesian information  
254 criterion (BIC) were considered for each model.

255 Based on the univariate ARIMA analysis, adjusted for the preinstallation data of the SARS-CoV-  
256 2 pandemic, a forecast of expected cases was developed for 2020 and 2021. The observed and  
257 predicted values are detailed in Table 3 and plotted in Figure 3. The prediction reflected the MMR  
258 that might have been reported if the pandemic had not occurred. In 2020 and 2021, MMRs of

259 25.46 and 17.12 per 100,000 LBs were reported, respectively. The prediction for the first year  
260 showed 19.18 maternal deaths per 100,000 live births (95% CI: 13.41-24.95) and 17.77 (95% CI:  
261 8.85-26.70) for 2021 (Figure 3a). Consequently, for the first year (2020), the maternal mortality  
262 difference attributable to the pandemic was 6.28 deaths per 100,000 live births. Among the  
263 possible candidates, the best model identified for the total MMR had the components (4,2,0). The  
264 accuracy of this prediction was 89.75%, with an MAE of 1.98 maternal deaths per 100,000 LBs.  
265 However, for 2021, the value of the prediction was slightly higher than that observed (see Table  
266 3).

267 Table 3. Impact of the SARS-CoV-2 Pandemic on the total maternal mortality ratio (MMR) and by groups of causes of mortality, in Chile (1997-2021).  
 268 Observed values versus prediction without Pandemic. Forecast analysis with ARIMA models

	Year	Observed	Predictio n	95% CI	Delta	(p, d, q) a	MAPE <sup>b</sup>
MMR Total	2020	25.46	19.18	13.41- 24.95	6.28	(4, 2, 0)	10.25
	2021	17.12	17.77	8.85-26.70	-0.65		
	2022	-	17.57	6.69-28.45			
RMM by groups of causes							
Direct causes	2020	15.80	15.22	11.28- 19.15	0.58	(0, 2, 1)	10.33
	2021	9.65	14.76	8.54-20.98	-5.11		
Indirect causes	2020	9.65	3.44	-0.13-7.01	6.21	(4, 2, 0)	27.27
	2021	7.46	1.55	-3.24-6.34	5.91		
Indirect respiratory causes*	2020	8.80	1.00	-4.30-6.30	7.80	(3, 1, 0)	109.33
	2021	0.00					
Indirect no respiratory causes	2020	8.77	4.02	0.44-7.61	4.75	(2, 2, 1)	34.63
	2021	7.46	3.83	-0.12-7.79	3.63		
Indirect infectious causes*	2020	30.70	3.45	-6.15- 13.06	27.25	(1, 1, 0)	154.51
	2021	52.61	1.73	-8.29- 11.76	50.88		
Indirect non-infectious causes	2020	5.70	3.23	-0.02-6.5	2.47	(0, 2, 2)	35.16
	2021	2.19	2.79	-0.64-6.6	-0.82		

269 95% CI, 95% confidence interval; <sup>a</sup> Model components, where p represents the largest number of lags of the autoregressive parameter, d is the degree  
 270 of differentiation of the series, and q is the largest number of components of the moving average; <sup>b</sup> MAPE: Mean Absolute Percent Error of prediction.

271 \*The estimate assumes an indefinite value when there are values equal to zero in the analyzed series.

272

273 Figure 3: Expected maternal mortality ratio vs observed during the SARS-Cov-2 pandemic in Chile for (a) total maternal mortality ratio, (b) maternal  
 274 mortality ratios due to total direct causes, (c) total indirect causes, (d) respiratory causes, (e) non-respiratory causes, (f) infectious causes, (g) non-  
 275 infectious causes. \* Maternal mortality ratio (MMR) per 1 000,000 live births. The line represents predicted values of the ARIMA models of MMR in Chile  
 276 for total and specifics causes of maternal mortality ratio. Bars represents historical data. Light grey represents confidence intervals (CI 95%) for predicted

- 277 MMR based on historical trends. For indirect causes all panels show an increase in MMR compared to expected rates based on historical data, however
- 278 MMR due to direct cause decrease as seen in Panel b.

279  
280  
281  
282 On the other hand, for 2020 and 2021, the direct-cause MMRs were 15.22 and 14.76 per 100,000  
283 LBs, respectively. In 2020, the ARIMA model prediction of maternal deaths per 100,000 live births  
284 for this group was 15.22 (95% CI: 11.28-19.15) and 14.76 (95% CI: 8.54-20.98) for 2021 (Figure  
285 3b). Thus, the difference in maternal mortality attributable to the pandemic for 2020 was 0.58  
286 deaths per 100,000 live births. However, for 2021, the observed MMR value for this group of  
287 causes (9.65 per 100,000 LBs) was lower than the prediction (see Table 3). The prediction  
288 accuracy for direct causes was 89.67%, and the model had the components (0,2,1), with an MAE  
289 of 1.43 maternal deaths per 100,000 LBs.

290 The best model for the MMR due to indirect causes was (4,2,0). The MMRs in this group were  
291 9.65 and 7.46 per 100,000 LBs for 2020 and 2021, respectively. In contrast, the ARIMA model  
292 predictions for the same period were 3.44 (95% CI: -0.13-7.01) and 1.55 (95% CI: -3.24-6.34)  
293 (Figure 3c). In the comparison between groups of direct and indirect causes of death, this group  
294 had the greatest difference attributable to the pandemic, with an MMR of 6.21 per 100,000 LBs  
295 in 2020 and 5.91 in 2021, with an accuracy of 72.73% and an MAE of 1.16 maternal deaths per  
296 100,000 LBs.

297 Regarding the group of indirect nonrespiratory causes, the observed values of maternal mortality  
298 in 2020 (MMR 8.77/100,000 LBs) and in 2021 (MMR 7.46/100,000 LBs) almost doubled the  
299 prediction. In this regard, the forecasts in the absence of a pandemic were 4.02 (95% CI: 0.44-  
300 7.61) and 3.83 deaths per 100,000 LBs, respectively (Figure 3e). The difference in maternal  
301 mortality attributable to the SARS-CoV-2 pandemic would be an MMR of 4.75 (2020) and 3.63  
302 maternal deaths per 100,000 LBs in 2021. The best model for this group of MMRs was (2,2,1),  
303 while the ARIMA model prediction for the time series had an accuracy of 65.37%.

304 Finally, in the group of indirect infectious causes of mortality, the MMR was 30.70/1,000,000 LBs  
305 in 2020, with an increase in the following year reaching 52.61/1,000,000 LBs. The prediction for  
306 2020 was 3.45 (95% CI: -6.15-13.06) maternal deaths/1 000 000 LBs, and for 2021, it was 1.73  
307 (95% CI: -8.29-11.76) maternal deaths//1 000 000 LBs (Figure 3f). Thus, the increase in mortality  
308 attributable to the pandemic would be 27.25 maternal deaths/1 000 000 LBs in 2020 and 50.88



309 maternal deaths/1,000,000 LBs in 2021. In the prediction, the best model for this series had the  
310 parameters (1,1,0) and an MAE of 3.22 maternal deaths per 1,000,000 LBs. The information for  
311 the other groups evaluated is shown in Table 3.

## 312 Discussion

313 In order to identify the excess maternal mortality associated with the SARS-CoV-2 pandemic, this  
314 population-based study used ARIMA predictive models to estimate expected death rates in the  
315 absence of the pandemic event. Using this analytic approach, an increase in the observed total  
316 MMR for 2020-2021 relative to the expected values was confirmed. The finding was consistent  
317 with the results of an interrupted time series analysis for the secular trend. The latter showed that  
318 SARS-CoV-2 pandemic had an increasing effect on maternal mortality in Chile. There was a  
319 specific increase in the MMR due to indirect causes, specifically due to non-respiratory, infectious,  
320 and some respiratory causes. In contrast, there was no increase in the MMR due to direct obstetric  
321 causes during 2020-2021 showing a steadily downward trend over the last years.

322 The findings in Chile confirm preliminary surveillance reports during the outbreak. A Mexican  
323 study reported an increase in the MMR of 11.3/100,000 LBs in 2020 (42.4/100,000 LBs in 2020  
324 compared to an MMR of 31.1/100,000 LBs in 2019).<sup>15</sup> Other studies reported an increase in  
325 maternal mortality associated with the pandemic in Brazil <sup>16,17</sup> and Colombia.<sup>6</sup> In this regard, some  
326 factors that would explain this increase could be difficulties in accessing maternal health care and  
327 controls, as well as interruptions in specialized services, mobility restrictions, and other diseases  
328 that were not treated in time, particularly for high-risk pregnancies.<sup>18-21</sup> Likewise, the role of the  
329 fewer resources allocated to health, together with economic inequalities, may have increased the  
330 risk of maternal death from SARS-CoV-2.<sup>17</sup> It is expected that difficulties in accessing health care  
331 among pregnant women would have an impact on their health and, therefore, on mortality from  
332 direct and indirect causes.<sup>22</sup> However, from 2020-2021, no excess maternal mortality from direct  
333 obstetric causes associated with the pandemic was observed in Chile. This matches the results  
334 of a natural experiment conducted in Argentina with maternal mortality data (1980-2017).<sup>14</sup> The  
335 study found no effect of the H1N1 pandemic on the MMR due to direct causes such as  
336 hypertension, haemorrhage, abortion outcomes, or other direct obstetric causes.

337 A decrease in the MMR due to direct causes was observed in 2021, which could explain the  
338 negative delta of the total MMR in the ARIMA analysis for the same year. Coincidentally, ITS  
339 analysis showed no effect in this group of direct causes. The negative difference between  
340 prediction and observation could be explained by a possible reactivation of the health system and  
341 routine obstetric controls associated with a decrease in the MMR.<sup>8</sup> In this way, from 2020-2021,  
342 both the public and private health systems of Chile implemented coordinated and monitored daily  
343 health strategies focused on guaranteeing quality care for pregnant women in situations of greater  
344 vulnerability, ensuring prenatal check-ups and postnatal care, and access to emergency obstetric  
345 services. Another explanatory hypothesis, however, would be the possible underreporting of  
346 maternal deaths due to the provisional nature of the data for 2021.

347 On the other hand, both analyses identified groups of indirect causes, particularly non-respiratory  
348 causes in Chile for 2020 and 2021. This was consistent with other studies.<sup>21,23-25</sup> Indirect causes  
349 are associated to non-transmissible comorbidities, such as diabetes, asthma, and obesity and it  
350 is well known that COVID-19 impacted predominantly on groups with this preexisting conditions.  
351 Other studies reported indirect respiratory causes as a relevant group in contributing to maternal  
352 mortality. Acute respiratory distress syndrome and pneumonia associated with SARS-CoV-2 have  
353 been indicated as leading causes of death among pregnant women.<sup>21</sup> The Mexican study reported  
354 32% increase in the group of MMRs due to indirect respiratory causes compared to the previous  
355 period (2011-2019).<sup>15</sup> In regard to previous studies on the effect of pandemic events, such as the  
356 case of Argentina for emergent H1N1 in 2009, a specific increase in maternal mortality due to  
357 respiratory causes was observed.<sup>14</sup> In contrast, our study identified only a slight increase in  
358 indirect respiratory causes. One hypothesis that could explain these differences would be the  
359 criterion for coding the causes of maternal deaths.

360 In Chile, following WHO suggestions, maternal deaths aggravated by SARS-CoV-2 are assigned  
361 to code O98.5 (non-respiratory infectious indirect) accompanied by code U07.1 or U07.2,  
362 depending on confirmation of the presence or absence of the virus.<sup>12</sup> In this sense, in 2021, the  
363 group of causes of maternal deaths that had the greatest increase compared to 2020 was the  
364 group that included the deaths assigned to these codes. This increase in maternal mortality from  
365 SARS-CoV-2 in Chile in 2021 compared to 2020 coincides with the findings of a study carried out

366 in Brazil, where it was observed that, in 2021, maternal mortality increased with the arrival of the  
367 Gamma variant.<sup>26</sup>

368 Physiological changes during pregnancy may favour complications in the presence of SARS-  
369 CoV-2.<sup>27</sup> The change from cellular to humoral immunity during pregnancy is related to increased  
370 susceptibility to viral infections in pregnant women.<sup>28</sup> At present, however, the information  
371 available on the increased susceptibility to SARS-CoV-2 during pregnancy is contradictory. In  
372 fact, it has been proposed that pregnant women, in relation to the general population, may have  
373 a lower morbidity and mortality.<sup>21</sup> In this sense, it has been suggested that human chorionic  
374 gonadotropin and progesterone lower the proinflammatory activity of TH-1, decreasing tumour  
375 necrosis factor.<sup>21</sup> This modulating effect is hypothesized to protect against the cytokine storm and,  
376 therefore, mortality associated with SARS-CoV-2 during pregnancy.<sup>29</sup> However, the burden of  
377 pre-existing chronic diseases could nullify this hypothetical protective factor during pregnancy.  
378 Thus, according to the findings of a study in Brazil, pregnancy and postpartum may be important  
379 risk factors associated with severe COVID-19.<sup>26,30</sup>

380 A fresh perspective in this discussion, considering that the MMR from direct obstetric causes has  
381 remained unchanged, suggests that the pathological pathways of this emerging coronavirus are  
382 largely unrelated to pregnancy itself. Our findings indicate that SARS-CoV-2 primarily affects  
383 women with pre-existing conditions and comorbidities such as diabetes and obesity. Therefore, it  
384 is likely that this new coronavirus is acting on systems and organs already compromised by pre-  
385 existing chronic conditions, rather than the physiological changes induced by the temporary state  
386 of pregnancy.

387 The strengths of this natural experiment include the use of two robust statistical analysis  
388 techniques, ITS and prediction with ARIMA models. The first allowed us to determine the causal  
389 effect of a specific factor by controlling for the temporal trend before and after the event of interest.  
390 Second, we aimed to forecast and estimate the MMR in the absence of the SARS-CoV-2  
391 pandemic with good accuracy levels. Similarly, population-based studies reduce the different  
392 sampling biases typical of observational studies, under the condition that the entire population of  
393 pregnant women exposed or not exposed to the SARS-CoV-2 pandemic is included, thus  
394 covering all deaths potentially attributable to it. In addition, according to our knowledge, this is the

395 first Chilean study to consider at the national level the impact of the pandemic on maternal  
396 mortality and to distinguish groups of causes of mortality with the ICD-10 classification. This  
397 provides relevant epidemiological information since population-based estimates of maternal  
398 mortality in Latin America during the pandemic period are insufficient.<sup>31</sup>

399 On the other hand, among the limitations is that the data on the MMR in Chile, currently published  
400 by the Ministry of Health for the years 2020-2021, are provisional and susceptible to further  
401 adjustments. In addition, the level of certainty of prediction values may have been affected by the  
402 absence of data for some years. However, two error measures, the mean absolute error and  
403 mean absolute percentage error, were estimated to give a measure of a good level of accuracy.  
404 Likewise, multiple factors were not controlled for, including the number of pregnant women who  
405 received SARS-CoV-2 vaccines and the number of beds and respirators available during this  
406 period, so the results should be interpreted with caution.

407 In conclusion, the Chilean maternal mortality registry was revealed as a useful tool to evaluate  
408 the specific effects of SARS-CoV-2 on the health of pregnant women. In Chile, from 2020-2021,  
409 there was an increase in total maternal mortality associated with SARS-CoV-2. In particular, the  
410 pandemic contributed to an increase in the MMR due to indirect causes, specifically, non-  
411 respiratory and infectious causes. However, there was no effect on the MMR due to direct  
412 obstetric causes. This suggests that the increase in maternal mortality occurred mainly among  
413 women with previous comorbidities. It is imperative, then, to prevent damage to maternal and  
414 child health during epidemic periods and that health strategies be implemented that focus on  
415 ensuring continuity of quality care, ensuring recommended prenatal and postnatal check-ups and  
416 access to specialized obstetric services for high-risk pregnancies.

417 The results also point to the need to strengthen the surveillance system for vulnerable  
418 populations, such as pregnant women, and thus provide an integrated timely response from  
419 health systems to mitigate specific adverse effects on maternal mortality both in Chile and in other  
420 Latin American countries. Identifying and analyzing the specific causes of maternal death  
421 associated with COVID-19 could facilitate the development of strategies to prevent potential  
422 pregnancy-related deaths during future pandemics. Finally, the quality and timeliness of official  
423 cause-specific maternal mortality data are essential for timely evidence-based decision-making,

424 especially during health crises. In this sense, Chilean official records are sensitive to natural  
425 events such as the current pandemic, and their analysis is strategic to prevent preventable  
426 maternal mortality and improve women's health.

427 Conflict of interest

428 The authors have no conflict of interest with the results or conclusions of this study.

429

430 Data sharing statement

431 The data underlying this article were accessed from Departamento de Estadísticas de  
432 Información de Salud del Gobierno de Chile, <https://deis.minsal.cl/>. The derived data generated  
433 in this research will be shared on reasonable request to the corresponding author.

434

435 Funding

436 This study was supported by research grants EPI-092018-01 and ONE-052021-01, both granted  
437 by FISAR <http://www.fisarchile.org/>.

438

439 References

440 1 World Health Organization. Coronavirus disease 2019 (COVID-19) Situation Report – 51.

441 2020; published online March 11. [cited 2023 November 24] Available from:

442 [https://www.who.int/docs/default-source/coronaviruse/situation-reports/20200311-sitrep-51-](https://www.who.int/docs/default-source/coronaviruse/situation-reports/20200311-sitrep-51-covid-19.pdf?sfvrsn=1ba62e57_10)  
443 [covid-19.pdf?sfvrsn=1ba62e57\\_10](https://www.who.int/docs/default-source/coronaviruse/situation-reports/20200311-sitrep-51-covid-19.pdf?sfvrsn=1ba62e57_10).

444 2 Pan American Health Organization. Epidemiological Alert: COVID-19 During Pregnancy.

445 2020; published online Aug 13. [cited 2023 November 24] Available from:

446 [https://iris.paho.org/bitstream/handle/10665.2/52613/EpiUpdate13August2020\\_eng.pdf?sequ](https://iris.paho.org/bitstream/handle/10665.2/52613/EpiUpdate13August2020_eng.pdf?sequence=1&isAllowed=y)  
447 [ence=1&isAllowed=y](https://iris.paho.org/bitstream/handle/10665.2/52613/EpiUpdate13August2020_eng.pdf?sequence=1&isAllowed=y).

- 448 3 Ioannidis JPA. Infection fatality rate of COVID-19 inferred from seroprevalence data. *Bull*  
449 *World Health Organ* 2021; 99: 19-33F.
- 450 4 Martinez-Valle A. Public health matters: why is Latin America struggling in addressing the  
451 pandemic? *J Public Health Policy* 2021; 42: 27–40.
- 452 5 Castañeda-Orjuela C, Gaitan LH, Diaz-Jimenez D, Cotes-Cantillo K, Garfield R.  
453 Maternal mortality in Colombia during the COVID-19 pandemic: time series and social  
454 inequities. *BMJ Open* 2023; 13: e064960.
- 455 6 Hogan MC, Foreman KJ, Naghavi M, *et al.* Maternal mortality for 181 countries, 1980–  
456 2008: a systematic analysis of progress towards Millennium Development Goal 5. *The*  
457 *Lancet* 2010; 375: 1609–23.
- 458 7 Ahmed T, Robertson T, Vergeer P, *et al.* Healthcare utilization and maternal and child  
459 mortality during the COVID-19 pandemic in 18 low- and middle-income countries: An  
460 interrupted time-series analysis with mathematical modeling of administrative data. *PLOS*  
461 *Med* 2022; 19: e1004070.
- 462 8 Ministerio de Salud. Decreta alerta sanitaria y otorga facultades extraordinarias que indica  
463 por emergencia de salud pública de importancia internacional. Decreto 4. 2020; published  
464 online Feb 8. [cited 2023 November 24] Available from:  
465 <https://www.bcn.cl/leychile/navegar?idNorma=1142163>.
- 466 9 Palacio-Mejía LS, Hernández-Ávila JE, Hernández-Ávila M, *et al.* Leading causes of excess  
467 mortality in Mexico during the COVID-19 pandemic 2020–2021: A death certificates study in  
468 a middle-income country. *Lancet Reg Health - Am* 2022; 13: 100303.
- 469 10 Departamento de Estadísticas e Información de Salud. Defunciones por causa de muerte,  
470 periodo 1990-2019. DEIS.MINSAL. 2021; published online May 18. [cited 2023 November  
471 24] Available from: <https://deis.minsal.cl/#datosabiertos>.
- 472 11 Instituto Nacional de estadísticas. Anuario de estadísticas vitales, 2019. 2021; published  
473 online Dec 2. [cited 2023 November 24] Available from: <https://www.ine.gob.cl/docs/default->

- 474 source/nacimientos-matrimonios-y-defunciones/publicaciones-y-anuarios/anuarios-de-  
475 estad%C3%ADsticas-vitales/anuario-de-estad%C3%ADsticas-vitales-  
476 2019.pdf?sfvrsn=97729b7b\_5.pdf.
- 477 12 World Health Organization. Orientación Internacional para la Certificación y Clasificación  
478 (codificación) del COVID-19 como causa de muerte. 2020; published online April 20. [cited  
479 2023 November 24] Available from:  
480 [https://www.campusvirtualesp.org/sites/default/files/orientacion\\_internacional\\_para\\_la\\_certific  
481 acion\\_y\\_clasificacioncovid-19\\_27\\_abril\\_2020.pdf](https://www.campusvirtualesp.org/sites/default/files/orientacion_internacional_para_la_certificacion_y_clasificacioncovid-19_27_abril_2020.pdf).
- 482 13 World Health Organization. The WHO Application of ICD-10 to deaths during pregnancy,  
483 childbirth and the puerperium: ICD-MM. Geneva: World Health Organization, 2012. [cited  
484 2023 November 24] Available from:  
485 [https://apps.who.int/iris/bitstream/handle/10665/70929/9789241548458\\_eng.pdf;jsessionid=2  
486 3A1A69CEA2F4ED4F37355F3D87B3C0D?sequence=1](https://apps.who.int/iris/bitstream/handle/10665/70929/9789241548458_eng.pdf;jsessionid=23A1A69CEA2F4ED4F37355F3D87B3C0D?sequence=1).
- 487 14 Critto ME, Enriquez Y, Bravo M, *et al*. Impact of emerging virus pandemics on cause-specific  
488 maternal mortality time series: a population-based natural experiment using national vital  
489 statistics, Argentina 1980-2017. *Lancet Reg Health - Am* 2022; 6: 100116.
- 490 15 Lumbreras-Marquez MI, Campos-Zamora M, Seifert SM, *et al*. Excess Maternal Deaths  
491 Associated With Coronavirus Disease 2019 (COVID-19) in Mexico. *Obstet Gynecol* 2020;  
492 136: 1114–6.
- 493 16 De Carvalho-Sauer RDCO, Costa MDCN, Teixeira MG, *et al*. Impact of COVID-19 pandemic  
494 on time series of maternal mortality ratio in Bahia, Brazil: analysis of period 2011–2020. *BMC  
495 Pregnancy Childbirth* 2021; 21: 423.
- 496 17 Siqueira TS, Silva JRS, Souza MDR, *et al*. Spatial clusters, social determinants of health and  
497 risk of maternal mortality by COVID-19 in Brazil: a national population-based ecological  
498 study. *Lancet Reg Health - Am* 2021; 3: 100076.

- 499 18 Townsend R, Chmielewska B, Barratt I, *et al.* Global changes in maternity care provision  
500 during the COVID-19 pandemic: A systematic review and meta-analysis. *EClinicalMedicine*  
501 2021; 37: 100947.
- 502 19 Juan J, Gil MM, Rong Z, Zhang Y, Yang H, Poon LC. Effect of coronavirus disease 2019  
503 (COVID-19) on maternal, perinatal and neonatal outcome: systematic review. *Ultrasound*  
504 *Obstet Gynecol* 2020; 56: 15–27.
- 505 20 Karlinsky A, Kobak D. Tracking excess mortality across countries during the COVID-19  
506 pandemic with the World Mortality Dataset. *eLife* 2021; 10: e69336.
- 507 21 Hessami K, Homayoon N, Hashemi A, Vafaei H, Kasraeian M, Asadi N. COVID-19 and  
508 maternal, fetal and neonatal mortality: a systematic review. *J Matern Fetal Neonatal Med*  
509 2022; 35: 2936–41.
- 510 22 Nair M, Nelson-Piercy C, Knight M. Indirect maternal deaths: UK and global perspectives.  
511 *Obstet Med* 2017; 10: 10–5.
- 512 23 Mendez-Dominguez N, Santos-Zaldívar K, Gomez-Carro S, Datta-Banik S, Carrillo G.  
513 Maternal mortality during the COVID-19 pandemic in Mexico: a preliminary analysis during  
514 the first year. *BMC Public Health* 2021; 21: 1297.
- 515 24 Regan AK, Arah OA, Fell DB, Sullivan SG. SARS-CoV-2 Infection During Pregnancy and  
516 Associated Perinatal Health Outcomes: A National US Cohort Study. *J Infect Dis* 2022; 225:  
517 759–67.
- 518 25 Maza-Arnedo F, Paternina-Caicedo A, Sosa CG, *et al.* Maternal mortality linked to COVID-19  
519 in Latin America: Results from a multi-country collaborative database of 447 deaths. *Lancet*  
520 *Reg Health - Am* 2022; 12: 100269.
- 521 26 Gonçalves BMM, Franco RPV, Rodrigues AS. Maternal mortality associated with COVID-19  
522 in Brazil in 2020 and 2021: Comparison with non-pregnant women and men. *PLOS ONE*  
523 2021; 16: e0261492.



- 524 27 Liu H, Wang L-L, Zhao S-J, Kwak-Kim J, Mor G, Liao A-H. Why are pregnant women  
525 susceptible to COVID-19? An immunological viewpoint. *J Reprod Immunol* 2020; 139:  
526 103122.
- 527 28 Zeng Y, Lin L, Yan Q, *et al.* Update on clinical outcomes of women with COVID-19 during  
528 pregnancy. *Int J Gynaecol Obstet Off Organ Int Fed Gynaecol Obstet* 2020; 150: 264–6.
- 529 29 Elshafeey F, Magdi R, Hindi N, *et al.* A systematic scoping review of COVID-19 during  
530 pregnancy and childbirth. *Int J Gynecol Obstet* 2020; 150: 47–52.
- 531 30 Villar J, Ariff S, Gunier RB, Thiruvengadam R, Rauch S, Kholin A, Roggero P, Prefumo F, Do  
532 Vale MS, Cardona-Perez JA, Maiz N. Maternal and neonatal morbidity and mortality among  
533 pregnant women with and without COVID-19 infection: the INTERCOVID multinational cohort  
534 study. *JAMA pediatrics*. 2021;175:817-26.
- 535 31 Yang J, D'Souza R, Kharrat A, *et al.* Coronavirus disease 2019 pandemic and pregnancy  
536 and neonatal outcomes in general population: A living systematic review and meta-analysis  
537 (updated Aug 14, 2021). *Acta Obstet Gynecol Scand* 2022; 101: 7–24.
- 538
- 539
- 540
- 541 Supporting information - Captions
- 542 Table S1- Characteristics of the ARIMA models, selection criteria and accuracy indicators of the  
543 prediction of the maternal mortality ratio (MMR) groups of mortality, in Chile (1997-2021)
- 544
- 545

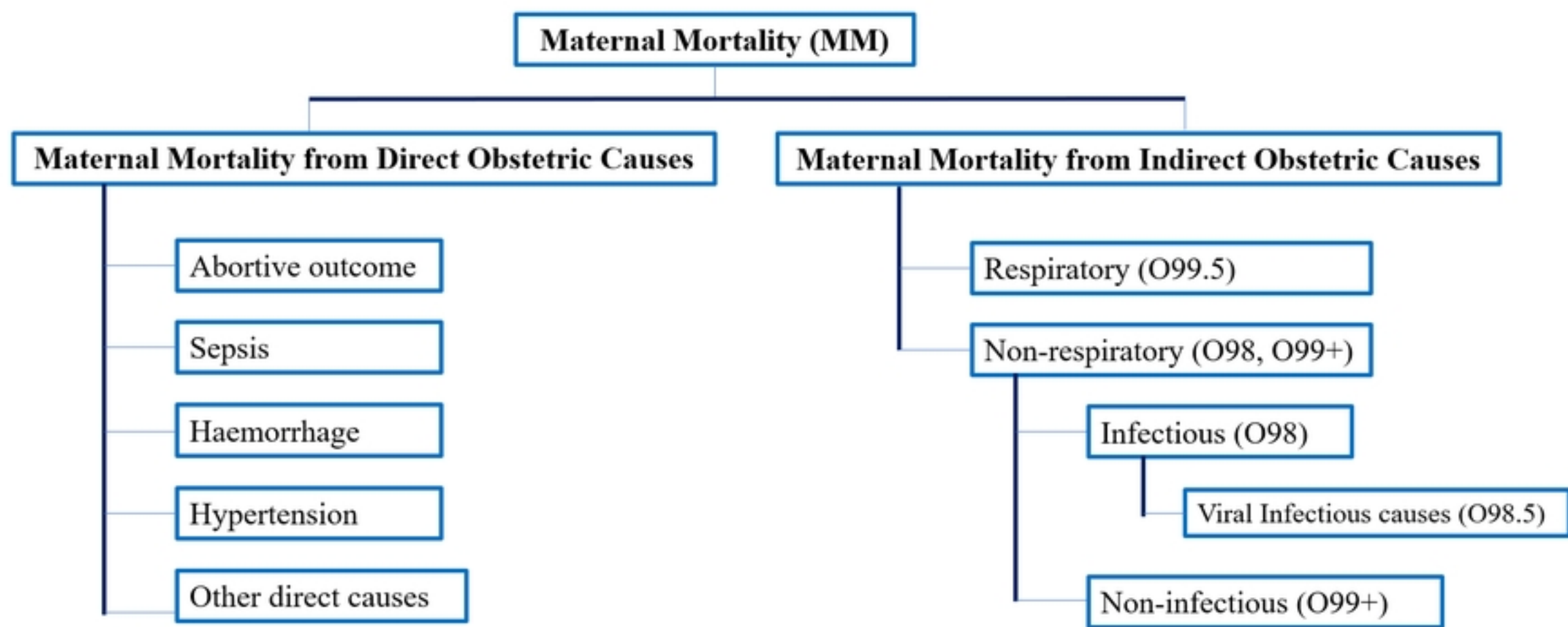


Figure 1

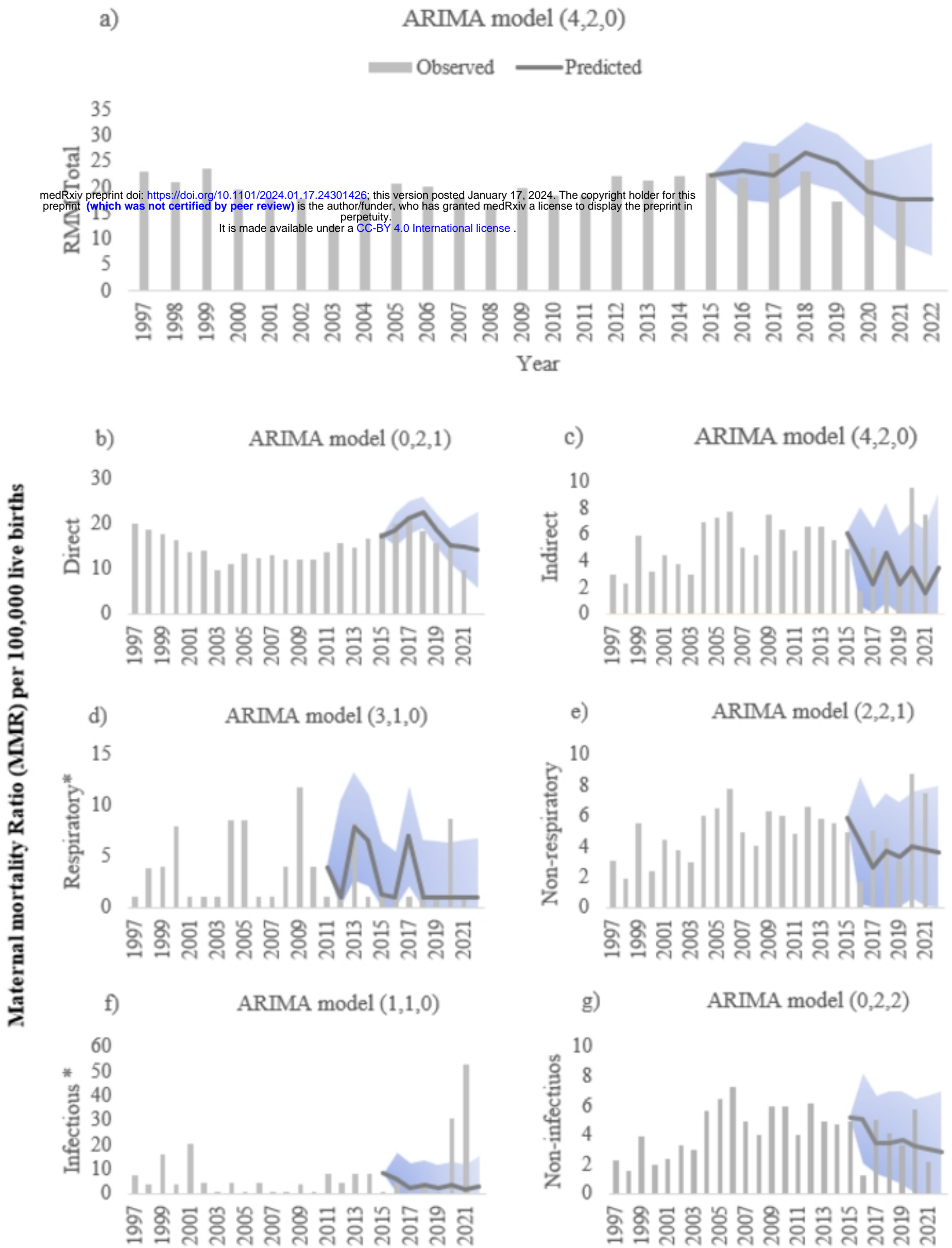


Figure 3

Maternal Mortality Ratio (MMR) per 100,000 live births

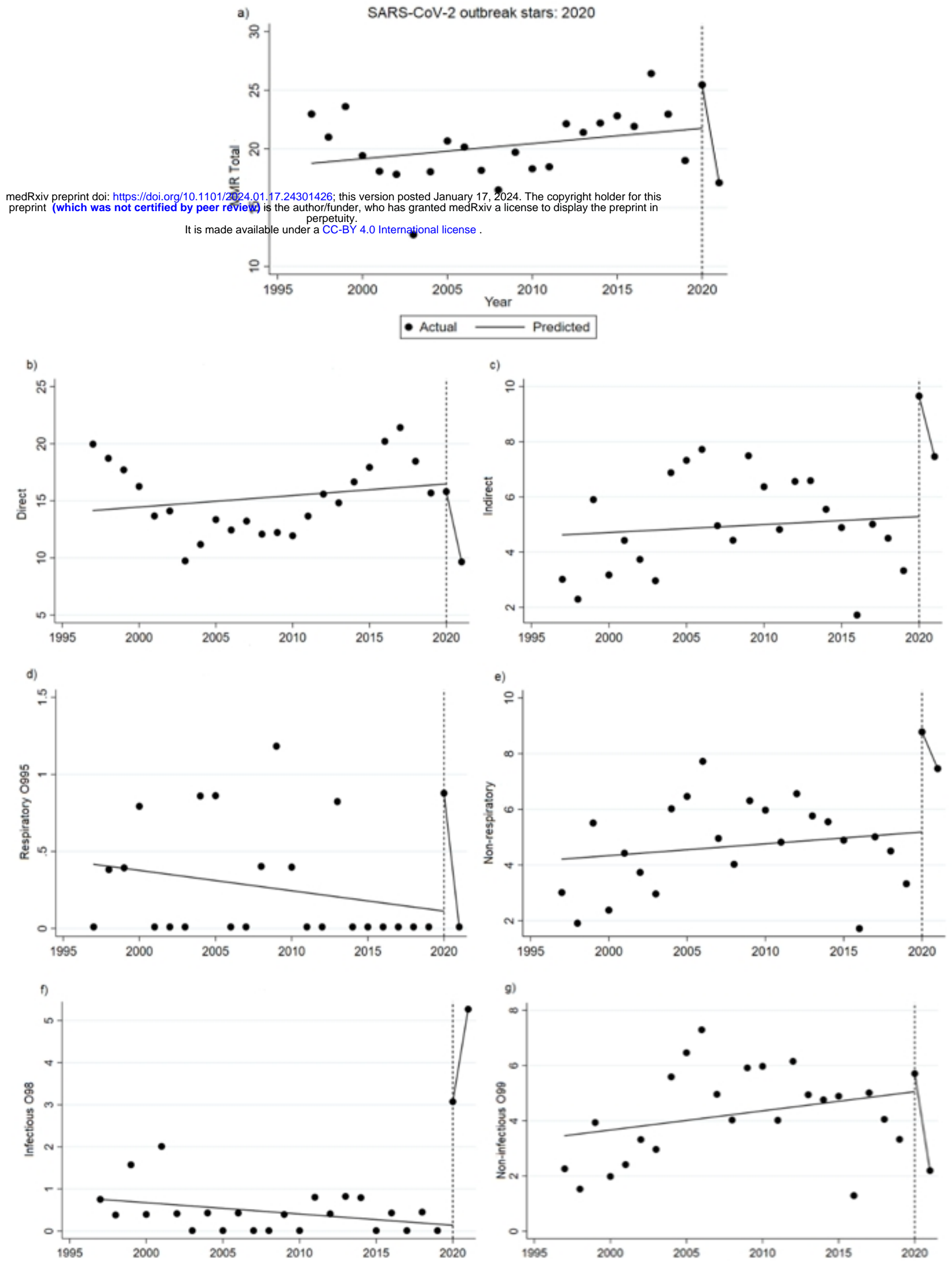


Figure 2