

1 **Pathways of Exposure to *Vibrio Cholerae* in an Urban Informal Settlement**
2 **in Nairobi, Kenya.**

3 Kelvin Kering¹, Yuke Wang², Cecilia Mbae¹, Michael Mugo¹, Beatrice Ongadi¹, Georgina
4 Odityo¹, Peter Muturi¹, Habib Yakubu², Pengbo Liu², Sarah Durry², Aniruddha
5 Deshpande³, Wondwossen Gebreyes^{4,5}, Christine Moe², and Samuel Kariuki^{1*}

6 1. Centre for Microbiology Research, Kenya Medical Research Institute, Nairobi,
7 Kenya.

8 2. Center for Global Safe Water, Sanitation, and Hygiene, Hubert Department of
9 Global Health, Rollins School of Public Health, Emory University, Atlanta, GA, USA.

10 3. Department of Epidemiology, Rollins School of Public Health, Emory University,
11 Atlanta, Georgia

12 4. Global One Health initiative (GOHi), The Ohio State University, Columbus, OH, USA.

13 5. Veterinary Preventive Medicine, The Ohio State University, Columbus, OH, USA.

14

15 *Correspondence:

16 Samuel Kariuki: samkariuki2@gmail.com / skariuki@kemri.go.ke

17 Kelvin Kering: keringk@gmail.com / kkering@kemri.go.ke

18

19

20

21 **NOTE: This preprint reports new research that has not been certified by peer review and should not be used to guide clinical practice.**

22 **Abstract**

23 Cholera is a diarrhoeal disease caused by the toxigenic *Vibrio cholerae* (*V. cholerae*)
24 bacterium. *V. cholerae* can contaminate drinking water sources and food through poor
25 sanitation and hygiene, especially in informal settlements and refugee camps where
26 cholera outbreaks have been reported in Kenya.

27 This study aimed to identify environmental transmission routes of *V. cholerae* within
28 Mukuru informal settlement in Nairobi. We collected nine types of environmental
29 samples (drinking water, flood water, open drains, surface water, shaved ice, raw
30 produce, street food, soil, and public latrine swabs) over 12 months. All samples were
31 analysed for *V. cholerae* by culture and qPCR, then qPCR-positive samples were
32 quantified using a *V. cholerae* DNA standard. Behavioural data was collected to
33 determine the frequency of contact with the environment among adults and children.

34 Of the 803 samples collected, 20.4% were positive for *V. cholerae* by qPCR. However,
35 none were positive for *V. cholerae* by culture. *V. cholerae* genes were detected in the
36 majority of the environmental water samples (79.3%), including open drains, flood
37 water, and surface water, but were only detected in small proportions of other sample
38 types. Vibrio-positive environmental water samples had higher mean *V. cholerae*
39 concentrations [2490–3469 genome copies (gc) per millilitre (mL)] compared to
40 drinking water samples (25.6 gc/mL). Combined with the behavioural data, exposure
41 assessment showed that contact with surface water had the highest contribution to
42 the total *V. cholerae* exposure among children while ingestion of municipal drinking
43 water and street food and contact with surface water made substantial contributions
44 to the total *V. cholerae* exposure for adults.

45 Detection of *V. cholerae* in street food and drinking water indicates risk of both
46 endemic and epidemic cholera. Exposure to *V. cholerae* through multiple pathways
47 highlights the need to improve water and sanitation infrastructure, strengthen food
48 hygiene practices, and roll out cholera vaccination.

49 **Keywords:** *Vibrio cholerae*, Environmental samples, Exposure assessment, Informal
50 settlement, Kenya

51 **Introduction**

52 Cholera is an acute infectious diarrhoeal disease caused by toxigenic *Vibrio cholerae*
53 (*V. cholerae*), a comma-shaped, gram-negative bacterial pathogen [1,2] transmitted
54 to humans through the consumption of contaminated food and water. It is estimated
55 that approximately 2.9 million cases of cholera occur annually, resulting in 95,000
56 deaths globally, with low- and middle-income countries bearing the biggest burden
57 [3]. Of the cholera cases reported to the World Health Organization (WHO) between
58 1996 and 2019 [4,5] the majority were reported from sub-Saharan Africa. In Kenya,
59 cholera was first reported in 1971, with several outbreaks being reported every five
60 to seven years [6,7]. Cholera cases are often recorded in refugee camps [8,9] and
61 Nairobi's urban informal settlements [10] with case fatality rates (CFR) greater than
62 2.5%. For instance, in 2016, cholera cases were reported in 22 of Kenya's 47 counties
63 [9] with an average CFR of 1.6 [7], while in 2019, 5208 cases were recorded, with a
64 CFR of 2.7% [7]. The high CFR observed in Kenya is concerning and highlights the
65 need to map cholera hotspots, identify risk factors, and implement evidence-based
66 integrated intervention strategies.

67 *V. cholerae* is pervasive in aquatic environments and thrives as free-living cells in
68 brackish and freshwater or biofilms in zooplankton and phytoplankton [2,11].
69 However, in unfavourable environmental conditions and limited nutrition, *V. cholerae*
70 enter a viable but non-culturable (VBNC) state [12–14]. From aquatic environments
71 and environmental reservoirs, *V. cholerae* can spread into drinking water sources and
72 food through contaminated runoff from flooding and/or wastewater [15], thereby
73 exposing the human population. The presence and persistence of *V. cholerae* in
74 environmental reservoirs (freshwater, wastewater, rivers) [16–18] enables microbial

75 risk assessment using data on human behaviour interactions with those reservoirs and
76 the levels of *V. cholerae* in these environments.

77 Impoverished populations, especially in informal settlements [6], refugee camps, and
78 areas afflicted by natural calamities and conflicts [19] are disproportionately affected
79 by cholera due to poor water, sanitation, and hygiene (WASH), limited access to
80 healthcare, and weak healthcare systems. Due to the rapid population growth and
81 unplanned residential developments, it is estimated that as of 2023 about 60% of
82 Kenya's population resides in informal settlements and slums [20,21], some of which
83 are located within Kenya's capital, Nairobi. One of the informal settlements in Nairobi,
84 Mukuru Slums, is characterized by overcrowding, poor solid-waste management,
85 inadequate WASH infrastructure and limited access to healthcare. While there have
86 been previous reports of cholera outbreaks within the Mukuru informal settlements,
87 the probable pathways of exposure have not been identified. SaniPath is a multi-
88 pathway exposure assessment approach that identifies and characterizes the
89 pathways of exposure to fecal contamination and enables the prioritization and design
90 of WASH interventions [22,23]. This study extended the SaniPath approach for
91 assessing exposure to fecal contamination to exposure specifically to *V. cholerae*. Our
92 goal was to understand the transmission of *V. cholerae* by examining plausible
93 pathways of exposure to *V. cholerae* and examining spatial and temporal variation in
94 *V. cholerae* detection and concentration in different environmental reservoirs. The
95 results from this study will guide the development of evidence-based integrated
96 prevention and control strategies for this cholera-endemic setting.

97 **Materials and Methods**

98 **Study site**

99 The study was conducted in the Mukuru informal settlement, which is located 20 km
100 east of Nairobi in Kenya. This informal settlement is divided into eight villages and this
101 study was conducted in two villages (Mukuru Kwa Njenga and Mukuru Kwa Reuben),
102 hereafter referred to as neighbourhoods. The neighbourhoods are further divided into
103 zones. Based on local hospital records (from the Mukuru Kwa Reuben Health Centre,
104 Mukuru Health Centre, and Medical Missionaries of Mary) and community health
105 volunteers (CHVs) reports of previous cholera cases, the study was conducted in five
106 zones identified as cholera hotspots (zones that had reported cholera cases in the
107 most recent outbreak, 2018) [24]. Three zones (Gatoto, Mombasa, Feed the Children-
108 FTC) within Mukuru kwa Reuben and two zones (Wapewape and Pipeline) within
109 Mukuru kwa Njenga neighbourhood were selected as study sites (**Figure 1**).

110 **Figure 1:** Mapped cholera hotspots (Gatope, Mombasa, and Feed the Children) in the
111 Mukuru Kwa Reuben neighbourhood and (Wapewape and Pipeline) in the Mukuru Kwa
112 Njenga neighbourhood. The unit for population density is persons per square
113 kilometre.

114 **Identification of transmission routes**

115 Transect walks and information from CHVs were used to identify plausible exposure
116 pathways and transmission routes for *V. cholerae*. The transect walks were conducted
117 as previously described [25,26]. The information provided by the CHVs included the
118 pathways that are relevant to the Mukuru informal settlement and the most
119 appropriate sampling sites. The sampling sites were selected in areas where the
120 residents often interacted with those pathways, including the children's playgrounds,

121 the most frequently used public sanitation facilities, common public water sources,
122 and the most commonly consumed produce from markets and street foods from
123 neighbourhood street vendors.

124 **Behaviour survey and environmental sample collection**

125 Between November 2020 and April 2022, we conducted 400 household surveys from
126 randomly selected households, 16 community surveys (average of 18 participants per
127 survey), and 16 school surveys (20 participants per survey) in the study
128 neighbourhoods using the SaniPath Tool [25,27]. Respondents to the household
129 surveys were adults residing within the two study neighbourhoods who were involved
130 in the management of water within the household and familiar with children's
131 activities. The community and school surveys were conducted separately for male and
132 female participants. Participants in the community survey were persons residing within
133 the two neighbourhoods and with a child aged 5–12 years. The school surveys were
134 conducted in four schools in the two neighbourhoods with school children aged 10–
135 12 years. The surveys collected behaviour information related to the frequency of
136 contact with different compartments of the environment (eg. open drains, flood water,
137 surface water, drinking water source, consumption of street food and raw produce,
138 etc.) by adults and children.

139 In the two neighbourhoods, ten sampling sites (five per neighbourhood) were
140 randomly selected for each sample type. Six sample types (public latrine swabs, soil,
141 surface water, flood water, raw produce, and shaved ice) were collected weekly for 4
142 months (July– November 2021), the other three sample types (drinking water, open
143 drain, and street food) were collected weekly for one year (July 2021–July 2022).

144 Samples were collected as previously described [26]. Briefly, 1) soil was collected from
145 common children's playgrounds and public gathering areas; 2) surface water from
146 areas along the rivers where there was frequent human activity or river crossing; 3)
147 public latrines wall surfaces (100 cm²) that are frequently touched and door handles
148 were swabbed using two swabs per latrine; 4) flood water was collected from stagnant
149 water in areas with human activity; 5) open drain water was collected from concrete
150 and unlined open drainage channels containing liquid and solid waste, rain, flood
151 water, and wastewater from toilets and household activities in areas where reported
152 human contact was frequent; 6) drinking water was collected from communal
153 municipal water points, boreholes, water vendors, and stored drinking water from
154 randomly selected households where household surveys were conducted; 7) street
155 food reported to be commonly consumed by neighbourhood children and adults, 8)
156 produce reported to be commonly consumed raw, and 9) shaved ice purchased from
157 vendors.

158 Prior to sampling drinking water, chlorine concentration was determined. Drinking
159 water containing chlorine was collected directly from the source into 100 mL Whirl-
160 pak bags containing sodium thiosulphate. Surface water, flood water, and open drain
161 water samples were collected using a sterile metal bucket. The bucket was then placed
162 on the ground to allow the water to settle for five minutes, thereafter the water was
163 poured into 2L Whirl-pak bags. Soil samples were collected at a 45° angle to a depth
164 of 5cm using a sterile spatula. Hard-packed soil samples were gently broken using the
165 spatula before placing them in 100 mL Whirl-pak bags. Street food was collected from
166 vendors according to the quantity normally served to an individual. Raw produce
167 samples included tomato and coriander, and were collected and placed into 2L Whirl-

168 pak bags. The shaved ice was also collected in quantities typically consumed by an
169 individual and placed in Whirl-pak bags. Public latrine surfaces were swabbed using
170 Puritan environmental sampling swabs pre-moistened with neutralizing buffer and
171 0.1% peptone water (EnviroMax Plus, Puritan Medical Products Company LLC, Maine,
172 USA). The Whirl-pak bags containing the samples were then placed in cooler boxes
173 containing ice packs and transported to the Microbiology Laboratory at KEMRI and
174 processed within six hours of sample collection.

175 **Microbiological culture of samples for *Vibrio cholerae***

176 All samples were initially enriched in Alkaline Peptone Water (APW). For surface water,
177 flood water, open drain water, drinking water, and shaved ice, 5 mL of sample was
178 mixed with 5 mL of APW in 50 mL conical tubes and incubated at 37°C for 18 hours.
179 For raw produce, street food, and latrine swabs, samples were rinsed and then 5 mL
180 of the rinse solution was mixed with 20 mL of APW and incubated. Soil was initially
181 mixed with distilled water and then 5 mL of the soil suspension was mixed with APW
182 and incubated. Shaved ice was allowed to melt at room temperature before it was
183 mixed with APW. The samples were then subcultured onto Thiosulfate Citrate Bile salts
184 Sucrose (TCBS) agar and incubated at 37° C for 18 hours. Suspected *V. cholerae*
185 colonies were subjected to both an oxidase test (Thermo Scientific Remel BactiDrop
186 Oxidase) and *V. cholerae* 01 polyvalent antisera.

187 **Sample concentration**

188 The samples were concentrated before DNA extraction. For drinking water (borehole
189 water, water from vendors, and stored drinking water), 100 mL of each sample was
190 filtered through a 0.45 µM membrane filter (Millipore). The membrane filters were

191 then used as the template for DNA extraction. One hundred millilitres of open drain,
192 flood water, or surface water was concentrated using 1% Bovine Serum Albumin
193 (BSA), 12% Polyethylene Glycol (PEG), and 0.9M Sodium Chloride (NaCl). The street
194 foods were initially rinsed with 100 mL of sterile water, after which the homogenized
195 sample was concentrated using 1% BSA, 12% PEG, and 0.9M NaCl as described
196 above. The raw produce was mixed with 100 mL of phosphate-buffered saline Tween
197 (PBST), thereafter the solution was concentrated as described above. For soil, 100 g
198 was mixed with 200 mL of distilled water by shaking vigorously for 30 minutes, and
199 then sample was allowed to settle at room temperature for two hours. One hundred
200 millilitres of the sample were then concentrated as described previously. Each public
201 latrine swab was mixed with 7 mL of PBST, vortexed briefly, and allowed to incubate
202 at room temperature for 5 minutes and then eluted with PBST. This was done twice
203 for each of the two swabs collected from each public latrine. Approximately 15 mL of
204 the recovered eluate was concentrated using BSA, PEG, and NaCl as described above.
205 The concentrated samples and membrane filters were then stored at 4°C until further
206 processing.

207 **DNA extraction**

208 The samples were then centrifuged at 4200 revolutions per minute for one hour and
209 the pellet was used for DNA extraction using the QIAamp FAST DNA stool Mini Kit (50)
210 (Qiagen, Hilden, Germany), according to the manufacturer's instructions. A known
211 *Vibrio cholerae* isolate was used as a positive control, and sterile distilled water was
212 used as the negative control. The extracted DNA was stored at -80 °C for further
213 downstream analysis.

214 **Quantitative polymerase chain reaction (q-PCR) detection of *V. cholerae***

215 The presence of *V. cholerae* was examined through the detection of the hemolysin A
216 (*hlyA*) gene by qPCR as described by Huang *et al* [28]. The 25 μ L master-mix
217 contained 12.5 μ L Bio-Rad iQ Multiplex Powermix, 0.4 μ M of each *hlyA* forward and
218 reverse primers, 0.2 μ M *hlyA* probe, 5 μ L molecular water and 5 μ L of DNA template.
219 AMPLIRUN *Vibrio cholerae* DNA control (VIRCELL Microbiologists, MBC118) was used
220 as the positive control and nuclease-free water was used as the negative control.
221 Quantitative PCR was run on a Magnetic Induction Cycler (MIC) using the following
222 conditions: activation (at 95 $^{\circ}$ C for 15 minutes) and 40 cycles of 95 $^{\circ}$ C for 15 s, 55 $^{\circ}$ C
223 for 40 s and 72 $^{\circ}$ C for 30 s. PCR reactions were run in duplicate wells for each sample.
224 Samples with both Ct values of ≤ 39 and a difference between the duplicate Ct values
225 of < 2 were considered positive.

226 **Quantification of *V. cholerae* in positive samples**

227 *V. cholerae* positive samples with two Ct values of ≤ 36 were subjected to quantitative
228 detection of genome copies as previously described [29]. Briefly, commercially
229 purchased AMPLIRUN *Vibrio cholerae* DNA standard (VIRCELL Microbiologists,
230 MBC118) was serially diluted and subjected to qPCR to derive a standard curve. The
231 standard curve was then used to quantify the genome copies in the positive samples.
232 Quantification of genome copies in each sample was estimated by interpolation of the
233 mean Ct value to the standard curve and the dilution factor for each sample type.
234 Absolute equivalent genome copies was expressed as per mL for the water samples,
235 per gram for the raw produce, soil, and street food samples, and per swab for the
236 public latrine samples [29].

237 **Statistical Analysis**

238 We summarized the percent of environmental samples with detected *V. cholerae*
239 (positivity) and the mean concentration of *V. cholerae* among positive samples by
240 pathway and neighbourhood. Temporal trends of the percent positive samples for
241 each sample type, especially for drinking water, street food, and open drains, were
242 examined. We conducted the SaniPath multi-pathway exposure assessment [25] for
243 *V. cholerae* for adults and children and estimated exposure using the frequency of
244 behaviour leading to contact with the environment and the concentration of *V.*
245 *cholerae* in different environmental sample types. All the analyses were conducted in
246 R version 4.0.1.

247 **Ethical Considerations**

248 Ethical approval to conduct this study was sought and obtained from the Kenya
249 Medical Research Institute review board; Scientific and Ethics Review Unit
250 (**KEMRI/SERU/CMR/P00116/3871**), the National Commission for Science,
251 Technology and Innovation (**NACOSTI/P/20/4566**) and the Nairobi City County
252 (**CMO/NRB/OPR/VOL1-2/2020/32**). All adult participants were requested to
253 participate in the surveys after providing written informed consent. In the case of
254 school children, written informed consent was sought from their parents/guardians
255 and the school administration.

256 **Results**

257 ***V. cholerae* detection by environmental pathway**

258 Based on the transect walks, nine sample types (**Table 1**) were identified as the most
 259 probable to be associated with exposure to *V. cholerae* within the Mukuru informal
 260 settlement. Few water vendors were found in Mukuru Kwa Reuben, therefore, a lesser
 261 number of water samples was collected from this location. Of the 803 environmental
 262 samples analyzed, none were culture-positive for *V. cholerae*. However, 164 (20.4%)
 263 samples were positive for the *V. cholerae* hemolysin A gene by qPCR. In the two study
 264 neighbourhoods, surface water had the highest percentage (96.6%) of *V. cholerae*-
 265 positive samples. For open drain and flood water, 70% and 77% of the samples,
 266 respectively, were positive for *V. cholerae* (**Table 1**). The sample types with the lowest
 267 *V. cholerae* detection were drinking water (5.1%) and street food (5.4%). *V. cholerae*
 268 was not detected in any of the shaved ice samples. Chi-squared and the Fisher's exact
 269 test showed that there was no significant difference in the overall percentage of *V.*
 270 *cholerae* positive samples between the two neighbourhoods.

271 **Table 1: *V. cholerae* detection by samples type and neighbourhood**

Percent of Positive Samples (Number of Positive/Number of Samples)			
Sample types	Mukuru Kwa Reuben	Mukuru Kwa Njenga	Total
Drinking water [†]	6.5 (7/107)	4.0 (6/150)	5.1 (13/257)
Flood water	60.0 (9/15)	80.0 (12/15)	70.0 (21/30)
Open drain	73.3 (33/45)	80.4 (37/46)	77.0 (70/91)
Public latrine	20.0 (3/15)	26.7 (4/15)	23.3 (7/30)
Raw produce	13.3 (2/15)	20.0 (3/15)	16.7 (5/30)
Shaved ice	0 (0/14)	0 (0/15)	0 (0/29)
Soil	6.7 (1/15)	26.7 (4/15)	16.7 (5/30)

Street food*	7.1 (10/140)	3.6 (5/137)	5.4 (15/277)
Surface water	93.3 (14/15)	100 (14/14)	96.6 (28/29)
Total	20.7 (79/381)	20.1 (85/422)	20.4 (164/803)

*Street food includes french fries, githeri (mixture of beans and corn), and mandazi.

†Drinking water includes municipal water, borehole water, water from vendors, and stored drinking water.

272

273 ***V. cholerae* concentration in positive quantifiable environmental samples**

274 High concentrations of *V. cholerae* were detected in most of the sample types except
275 drinking water (**Table 2**). For water samples, the highest mean concentration of *V.*
276 *cholerae* was detected in surface water (3469 gc/mL) and the lowest concentration
277 was observed in drinking water (25.6 gc/mL). The mean concentration of *V. cholerae*
278 in the same sample type varied between the two study neighbourhoods. In Mukuru
279 Kwa Njenga, the mean concentration of *V. cholerae* in surface water was
280 approximately 5-fold higher than the concentration detected in Mukuru Kwa Reuben.
281 Additionally, high concentrations were also detected in drinking water, soil, and Raw
282 produce samples obtained from Mukuru kwa Njenga compared to those from Mukuru
283 Kwa Rueben. Public latrines sampled from Mukuru Kwa Reuben, had a higher mean
284 concentration (6618 gc/swab) of *V. cholerae* compared to Mukuru Kwa Njenga (4811.2
285 gc/swab). Street food samples collected from Mukuru Kwa Reuben had a slightly
286 higher concentration (587.6 gc/g) than in Mukuru Kwa Njenga (489 gc/g). Due to the
287 small sample sizes of quantifiable results, a two sample t-test did not detect any
288 significant difference in the mean concentrations of *V. cholerae* between two
289 neighbourhoods.

Table 2. Mean *V. cholerae* concentration in positive quantified samples

Sample types	Mukuru Kwa Reuben	Mukuru Kwa Njenga	Total
Drinking water [†] gc/mL	19.4 (7.0–40.0)	32.8 (4.0–107.0)	25.6 (4.0–107.0)
Flood water gc/mL	3731.5 (43.0–27320.0)	1558.9 (25.0–7357.0)	2490.0 (25.0–27320.0)
Open drain water gc/mL	4244.4 (19.0–48730.0)	2777.4 (45.0–27665.0)	3469.0 (19.0–48730.0)
Surface water gc/mL	971.3 (38.0–3780.0)	4768.6 (150.0–19975.0)	2867.0 (38.0–19975.0)
Public latrine gc/swab	6618.5 (4740.0–9100.4)	4811.2 (3049.7–7132.5)	5585.7 (3049.7–9100.4)
Raw produce gc/g	127.1 (69.8–184.4)	1243.1 (35.2–3553.1)	796.7 (35.2–3553.1)
Shaved ice gc/g			
Soil gc/g	309.4 (309.4–309.4)	1793.5 (79.6–5980.0)	1496.7 (79.6–5980.0)
Street food* gc/g	587.6 (125.9–1948.5)	489.0 (165.2–1021.5)	554.7 (125.9–1948.5)

*Street food includes french fries, *githeri*, and *mandazi*. [†]Drinking water includes municipal water, borehole water, water from vendors, and stored household drinking water.

290

291 **Temporal trend of *V. cholerae* detection**

292 The detection of *V. cholerae* in different sample types varied between the different
293 time periods of sampling. **Figure 2** shows the temporal distribution of *V. cholerae*
294 positive samples by neighbourhood and for both neighbourhoods combined. In both
295 neighbourhoods, *V. cholerae* detection in surface water and open drain remained high
296 ($\geq 50\%$) throughout the sampling period except in September 2021, when no positive
297 open drain samples were detected. The percentage of positive flood water samples
298 was also high ($\geq 80\%$) throughout the sampling period with the lowest detection
299 (37.5%) observed in August. For drinking water, *V. cholerae* detection was slightly
300 higher during the months of October and November compared to March through April.

301 **Figure 2:** Temporal (monthly) distribution of the number of *V. cholerae* positive
302 samples (left) and percentage of positive samples (right) by neighborhood and sample
303 type, July 2021- July 2022. The color coding indicates represents the percent of
304 positive samples by month in all the plots.

305 **Environmental pathways with substantial contribution to total exposure to** 306 ***V. cholerae***

307 Using the data on *V. cholerae* detection in environmental samples and reported
308 behavior frequency, we estimated exposure to *V. cholerae* through nine environmental
309 pathways. The contribution of a specific pathway to the total exposure to *V. cholerae*
310 was calculated by the exposure to *V. cholerae* from this pathway divided by the sum
311 of the exposures to *V. cholerae* from all pathways. The contribution of the nine
312 pathways, to the total exposure to *V. cholerae*, varied between adults and children.

313 **Table 3** shows the important pathways that made substantial contributions to the
314 total exposure to *V. cholerae*. **Figure 3** illustrates the contributions of different
315 pathways to the total exposure of *V. cholerae* in both neighbourhoods and between
316 the two age groups. Among children in both neighbourhoods, surface water was the
317 common important pathway of exposure to *V. cholerae*, contributing 84% and 79.7%
318 of the total exposure to *V. cholerae* in Mukuru Kwa Njenga and Mukuru Kwa Reuben,
319 respectively (**Figure 3**). Drinking water also contributed marginally (10.8%) to the
320 total exposure to *V. cholerae* among children in Mukuru Kwa Njenga. Among adults,
321 drinking water had the greatest contribution to total exposure to *V. cholerae*. In
322 Mukuru Kwa Njenga, drinking water had a high (71.1%) contribution to total exposure
323 for adults, while in Mukuru Kwa Reuben four pathways (ingestion of drinking water
324 and street food, contact with surface water, and ingestion of raw produce)
325 substantially contributed to the total exposure (**Figure 3**). The magnitude of the total
326 exposure to *V. cholerae* varied between the two neighbourhoods and among children
327 and adults (represented by the colour in **Figure 3**). The total exposure to *V. cholerae*
328 was higher in Mukuru kwa Njenga compared to Mukuru Kwa Reuben for both adults
329 and children.

Table 3: Pathways that made substantial contribution to the total exposure to *V. cholerae* by age group and neighbourhood

	Reuben	Njenga
Adults	Drinking Water, Raw Produce, Street Food, Surface Water	Drinking Water, Surface Water

Children	Surface Water	Drinking Water, Surface Water
-----------------	---------------	-------------------------------

330

331 **Figure 3.** Contributions of different pathways to the total exposure to *V. cholerae*
332 among adults and children in Njenga and Reuben neighbourhoods. The percentage
333 indicates the contribution of each pathway to the total exposure. The color coding
334 represents the magnitude of exposure to *V. cholerae* in every pathway.

335 **Discussion**

336 Cholera outbreaks continue to be a major health concern in low- and middle-income
337 countries resulting in devastating outcomes, especially among vulnerable populations
338 such as people displaced by natural disasters (e.g., drought and flooding), in refugee
339 camps, and those living in poor informal settlements [30–34]. In Kenya, the most
340 recent cholera outbreak was reported between October 2022 and March 2023 with a
341 CFR of 1.6% [35]. In this study, we aimed to identify the pathways of exposure to *V.*
342 *cholerae* and the relative contribution of each pathway to the total exposure to *V.*
343 *cholerae* within the Mukuru informal settlement of Nairobi, which is densely populated
344 and characterized by inadequate sanitation and hygiene.

345 We identified possible transmission routes and important exposure pathways to *V.*
346 *cholerae* in the informal settlements of Nairobi. Findings from this study demonstrate
347 the presence of *V. cholerae* in different environmental reservoirs within the informal
348 settlement, which poses a considerable health risk to the populations residing in these
349 areas. Although none of the environmental samples were positive for *V. cholerae*
350 through culture, the hemolysin A gene of *V. cholerae* was detected by qPCR in 20.4%

351 of the samples. The absence of culture-positive samples in this study could imply the
352 presence of viable but non-culturable (VBNC) or conditionally viable environmental
353 cells (CVEC) of *V. cholerae* [36]. A study conducted in Uganda also reported that none
354 of the surface water samples analysed for *V. cholerae* were culturable since all the
355 samples were *Crystal VC* dipstick negative [37]. These findings demonstrate the
356 importance of utilizing different detection methods because dependence on culture-
357 based methods alone may be unreliable. In the VBNC form, *V. cholerae* reduces
358 metabolic activity due to environmental stress and nutrient deprivation and is not
359 detectable through culture-based techniques [38] but remains viable for more than a
360 year [39]. The detection of *V. cholerae* through qPCR in this study could be an
361 indication of the widespread presence of VBNC in this informal settlement and
362 underscores the need for utilizing molecular methods for the detection of *V. cholerae*,
363 especially in cholera endemic areas. The presence of *V. cholerae* virulence genes in
364 environmental reservoirs in Mukuru Informal settlement is of grave concern
365 considering that VBNC *V. cholerae* cells can become infectious after ingestion by
366 humans [40] and/or in favourable conditions [41,42], which could result in cholera
367 outbreaks.

368 In the current study, *V. cholerae* was detected in > 96% of surface water samples,
369 which was much higher than the 10.8% detection rate reported in Uganda [37]. In
370 Dhaka, Bangladesh, *V. cholerae* was detected in a large percentage of open drain
371 samples (> 93%) [29], which is comparable to what was observed in this study. The
372 high concentrations of *V. cholerae* in environmental water reservoirs, including surface
373 water, open drain water, and flood water, observed in this study highlight the poor
374 sanitation conditions in the informal settlements. The surface water in these areas is

375 part of the Ngong River [43], and considering that some households are built on the
376 River banks [44], there is a possibility that fecal waste from the households ends up
377 in open drains and into the river. The detection of *V. cholerae* in the environmental
378 samples throughout the study period may be due to the continuous poor disposal of
379 fecal matter into the open drains and surface waters and the long-term persistence of
380 *V. cholerae* in the environmental reservoirs.

381 Given that cholera outbreaks have previously been associated with contaminated
382 drinking water [43,45,46], the presence of *V. cholerae* in drinking water and street
383 food is worrying since it can lead to possible large outbreaks in communities that
384 frequently buy street foods and rarely treat drinking water at home.

385 Although there was a difference in the contribution of different pathways to the total
386 exposure to *V. cholerae* among adults, four pathways (drinking water, surface water,
387 street food and produce) were prominent. Drinking water made a substantial
388 contribution to the total exposure for adults, especially in Mukuru Kwa Njenga. While
389 the concentration of *V. cholerae* in drinking water was low compared to environmental
390 waters, the high contribution to *V. cholerae* exposure could be attributed to the
391 frequent direct consumption of drinking water. The exposure to *V. cholerae* among
392 adults through drinking water is an indication of consumption of water that is not
393 treated or inadequately treated, which is common in the informal settlement [24].

394 For children in both neighbourhoods, surface water had the highest contribution to
395 total exposure to *V. cholerae*. In addition to the high concentration of *V. cholerae* in
396 surface water, children may be exposed to *V. cholerae* when playing around or
397 crossing the surface water (Ngong River) through informally constructed bridges. This

398 underscores the need for better infrastructure in the area and sensitization of residents
399 on the impact of proper waste management. Our findings indicate that levels of
400 absolute exposure to *V. cholerae* were higher in Mukuru Kwa Njenga for both children
401 and adults. This could be caused by a higher concentration of *V. cholerae* in the
402 environment and more frequent contact with the environment in Mukuru kwa Njenga.
403 This could be attributed to the high population in Mukuru Kwa Njenga and the fact
404 that the WASH infrastructure is much better in Mukuru Kwa Reuben. These findings
405 show that multiple pathways contribute to exposure to *V. cholerae* among vulnerable
406 populations, therefore, oral cholera vaccination and improvement of WASH
407 infrastructure and services are critical for the prevention and control of cholera
408 outbreaks.

409 Our findings also showed that in the three sample types (drinking water, open drains,
410 and street foods) collected for one year, *V. cholerae* detection peaked during two time
411 periods; May and September–October, which are part of the rainy/wet seasons in
412 Kenya. Similar findings were observed in Uganda, where the detection of *V. cholerae*
413 peaked in the months of March–July, which corresponds to wet seasons [37]. *V.*
414 *cholerae* contamination in the environment may be more likely to be transferred to
415 street food because of poor hygiene and food handling practices during months when
416 there is more *V. cholerae* in the environment.

417 Although *V. cholerae* was detected in drinking, street food and produce no cholera
418 outbreak was reported during the study period. This could be because the
419 contamination levels were not sufficiently high to cause infection in most exposure
420 incidents and there may be under-ascertainment and underreporting of cholera in
421 these poor neighbourhoods. However, in October 2022, two months after the

422 completion of the study, there was a cholera outbreak with a high burden of cases
423 reported in low-resource settings, including the study sites. The absence of reported
424 cholera cases during the study period could be an indication that traditional case-
425 based passive surveillance may not be sufficient to indicate the true circulation of *V.*
426 *cholera* in the population. Environmental surveillance may be useful in these settings
427 to complement conventional surveillance to monitor endemic and seasonal epidemic
428 cholera. This is critical considering studies have reported that major cholera outbreaks
429 are preceded by an increase in the presence of *V. cholerae* in the environment [47].

430 **Strengths and Limitations**

431 This study identified the probable routes of transmission of *V. cholerae* in an informal
432 settlement and quantitatively assessed exposure to *V. cholerae* through different
433 environmental pathways for children and adults. Three sample types (drinking water,
434 street food, and open drain water) samples were collected weekly over a period of 12
435 months to examine temporal patterns in *V. cholerae* detection. This study was
436 conducted in several zones within cholera-prone informal settlements and provide
437 insights about spatial variation in the presence of *V. cholerae* in environmental
438 reservoirs across small geographic areas. We also utilized both molecular and
439 conventional methods in the detection of *V. cholerae* in environmental samples.

440 This study has several limitations. First, there were only five sampling points for every
441 sample type per neighbourhood, which may not have been sufficient to represent the
442 entire neighbourhood. Second, the two study neighbourhoods form a small section of
443 a larger informal settlement and the findings may not be generalizable to other parts

444 of the informal settlements. Third, whereas we measured exposure, it does not directly
445 translate to infection or disease risk.

446 **Conclusion**

447 This study identified multiple environmental pathways of exposure to *V. cholerae* in
448 two informal settlements in Nairobi, Kenya. Because more than one pathway
449 substantially contributed to the total exposure to *V. cholerae* in these neighbourhoods,
450 these findings triggered an oral cholera vaccine campaign and distribution of safe
451 water storage containers and point of use drinking water chlorination kits (aquatabs)
452 as immediate prevention and control measures. The study findings also demonstrate
453 the importance of proper and sustainable water, sanitation and hygiene infrastructure
454 and services in high-risk areas. Seasonal variation in the detection of *V. cholerae* was
455 observed. Our study findings also demonstrate the potential use of environmental
456 surveillance to monitor temporal trends in cholera incidence and provide early
457 warnings of cholera outbreaks. There is also a need to conduct long-term surveillance
458 to determine the impact of climate change on the presence or persistence of *V.*
459 *cholerae* in the environment. Further studies should also be undertaken to understand
460 the phylogenetic relatedness and antimicrobial resistance in *V. cholerae* from both
461 clinical and environmental sources within the informal settlement, and their role in
462 sporadic cholera outbreaks in the settlement.

463 **Acknowledgement**

464 We would like to thank the community health volunteers who helped with conducting
465 the transect walks and the fieldworkers who were involved in sample collection and

466 processing. We also want to thank the Director General of Kenya Medical Research
467 Institute for the support in undertaking the study.

468 **Funding**

469 This study was funded by Wellcome grant number 215675-Z-19-Z.

470 **Conflict of interest**

471 The authors declare no competing or conflict of interest.

472 **Author contributions**

473 **Conceptualization:** Kelvin Kering, Cecilia Mbae, Habib Yakubu, Pengbo Liu,
474 Wondwossen Gebreyes, Christine Moe, and Samuel Kariuki.

475 **Data curation:** Kelvin Kering, Michael Mugo, Beatrice Ongadi, Peter Muturi, Georgina
476 Odityo and Sarah Durry

477 **Methodology:** Kelvin Kering, Habib Yakubu, Aniruddha Deshpande, Pengbo Liu and
478 Sarah Durry

479 **Data analysis:** Kelvin Kering, Yuke Wang, Pengbo Liu and Aniruddha Deshpande.

480 **Supervision:** Cecilia Mbae, Habib Yakubu, Pengbo Liu, Christine Moe and Sarah
481 Durry.

482 **Project administration:** Cecilia Mbae

483 **Funding acquisition:** Wondwossen Gebreyes, Christine Moe and Samuel Kariuki.

484 **Writing- original draft:** Kelvin Kering, Yuke Wang, and Samuel Kariuki

485 **Writing- review and editing:** Kelvin Kering, Cecilia Mbae, Michael Mugo, Beatrice
486 Ongadi, Georgina Odityo, Peter Muturi, Yuke Wang, Habib Yakubu, Pengbo Liu, Sarah
487 Durry, Aniruddha Deshpande, Wondwossen Gebreyes, Christine Moe, and Samuel
488 Kariuki

489

490 **References.**

- 491 1. Yoon S hun, Waters CM. Vibrio Cholerae. Trends Microbiol [Internet]. 2019
492 Sep 1;27(9):806–7. Available from: <https://doi.org/10.1016/j.tim.2019.03.005>
- 493 2. Cho JY, Liu R, Macbeth JC, Hsiao A. The Interface of Vibrio cholerae and the
494 Gut Microbiome. Gut Microbes [Internet]. 2021 Jan 1;13(1):1937015. Available
495 from: <https://doi.org/10.1080/19490976.2021.1937015>
- 496 3. Davis W, Narra R, Mintz ED. Cholera. Curr Epidemiol Reports [Internet].
497 2018;5(3):303–15. Available from: <https://doi.org/10.1007/s40471-018-0162-z>
- 498 4. Perez-Saez J, Lessler J, Lee EC, Luquero FJ, Malembaka EB, Finger F, et al.
499 The seasonality of cholera in sub-Saharan Africa: a statistical modelling study.
500 Lancet Glob Heal [Internet]. 2022 Jun 1;10(6):e831–9. Available from:
501 [https://doi.org/10.1016/S2214-109X\(22\)00007-9](https://doi.org/10.1016/S2214-109X(22)00007-9)
- 502 5. Zheng Q, Luquero FJ, Ciglenecki I, Wamala JF, Abubakar A, Welo P, et al.
503 Cholera outbreaks in sub-Saharan Africa during 2010-2019: a descriptive
504 analysis. Int J Infect Dis [Internet]. 2022 Sep 1;122:215–21. Available from:
505 <https://doi.org/10.1016/j.ijid.2022.05.039>
- 506 6. Kiama C, Okunga E, Muange A, Marwanga D, Langat D, Kuria F, et al. Mapping

- 507 of cholera hotspots in Kenya using epidemiologic and water, sanitation, and
508 hygiene (WASH) indicators as part of Kenya's new 2022-2030 cholera
509 elimination plan. *PLoS Negl Trop Dis*. 2023 Mar;17(3):e0011166.
- 510 7. NMSCEP. National multi-sectoral cholera elimination plan (nmcep) 2022 –
511 2030. 2022;2022–30. Available from: [https://www.gtfcc.org/wp-](https://www.gtfcc.org/wp-content/uploads/2022/09/national-cholera-plan-kenya.pdf)
512 [content/uploads/2022/09/national-cholera-plan-kenya.pdf](https://www.gtfcc.org/wp-content/uploads/2022/09/national-cholera-plan-kenya.pdf)
- 513 8. Kisera N, Luxemburger C, Tornieporth N, Otieno G, Inda J. A descriptive cross-
514 sectional study of cholera at Kakuma and Kalobeyei refugee camps, Kenya in
515 2018. *Pan Afr Med J*. 2020;37(Cdc):1–12.
- 516 9. Golicha Q, Shetty S, Nasiblov O, Hussein A, Wainaina E, Obonyo M, et al.
517 Cholera Outbreak in Dadaab Refugee Camp, Kenya - November 2015-June
518 2016. *MMWR Morb Mortal Wkly Rep*. 2018 Aug;67(34):958–61.
- 519 10. Hudson Taabukk K, Waqo B, Zeinab G, George G, Robert M, Jacob R, et al. A
520 protracted cholera outbreak among residents in an urban setting, Nairobi
521 county, Kenya, 2015. *Pan Afr Med J [Internet]*. 2020;36(127). Available from:
522 <https://www.panafrican-med-journal.com/content/article/36/127/full>
- 523 11. Ortega DR, Kjær A, Briegel A. The chemosensory systems of *Vibrio cholerae*.
524 *Mol Microbiol [Internet]*. 2020 Sep 1;114(3):367–76. Available from:
525 <https://doi.org/10.1111/mmi.14520>
- 526 12. Debnath A, Miyoshi S ichi. The Impact of Protease during Recovery from
527 Viable but Non-Culturable (VBNC) State in *Vibrio cholerae*. Vol. 9,
528 *Microorganisms*. 2021.

- 529 13. Ayibieke A, Nishiyama A, Senoh M, Hamabata T. Gene expression analysis
530 during the conversion from a viable but nonculturable to culturable state in
531 *Vibrio cholerae*. *Gene* [Internet]. 2023;863:147289. Available from:
532 <https://www.sciencedirect.com/science/article/pii/S0378111923001300>
- 533 14. Shuo Z, Xin L, JingYun Z, Biao K. Absolute Quantification of Viable but
534 Nonculturable *Vibrio cholerae* Using Droplet Digital PCR with Oil-Enveloped
535 Bacterial Cells. *Microbiol Spectr* [Internet]. 2022 Jun 28;10(4):e00704-22.
536 Available from: <https://doi.org/10.1128/spectrum.00704-22>
- 537 15. WHO/Department of Control of Neglected Tropical Diseases. Weekly
538 epidemiological record Relevé épidémiologique hebdomadaire. *Wkly Epidemiol*
539 *Rec* [Internet]. 2018;16(93):201–20. Available from:
540 <http://www.who.int/wer2018,93,649-660No48%0Ahttp://www.who.int/wer>
- 541 16. Daboul J, Weghorst L, DeAngelis C, Plecha SC, Saul-McBeth J, Matson JS.
542 Characterization of *Vibrio cholerae* isolates from freshwater sources in
543 northwest Ohio. *PLoS One* [Internet]. 2020 Sep 3;15(9):e0238438. Available
544 from: <https://doi.org/10.1371/journal.pone.0238438>
- 545 17. Zohra T, Ikram A, Salman M, Amir A, Saeed A, Ashraf Z, et al. Wastewater
546 based environmental surveillance of toxigenic *Vibrio cholerae* in Pakistan. *PLoS*
547 *One* [Internet]. 2021 Sep 30;16(9):e0257414. Available from:
548 <https://doi.org/10.1371/journal.pone.0257414>
- 549 18. Jutla A, Whitcombe E, Hasan N, Haley B, Akanda A, Huq A, et al.
550 Environmental factors influencing epidemic cholera. *Am J Trop Med Hyg*. 2013
551 Sep;89(3):597–607.

- 552 19. Jones FK, Wamala JF, Rumunu J, Mawien PN, Kol MT, Wohl S, et al.
553 Successive epidemic waves of cholera in South Sudan between 2014 and
554 2017: a descriptive epidemiological study. *Lancet Planet Heal.* 2020
555 Dec;4(12):e577–87.
- 556 20. Ren H, Guo W, Zhang Z, Kisovi LM, Das P. Population density and spatial
557 patterns of informal settlements in Nairobi, Kenya. *Sustain.* 2020;12(18).
- 558 21. UN-Habitat. Kenya COUNTRY Brief. 2023; Available from:
559 [https://unhabitat.org/sites/default/files/2023/07/kenya_country_brief_final_en](https://unhabitat.org/sites/default/files/2023/07/kenya_country_brief_final_en.pdf)
560 [.pdf](https://unhabitat.org/sites/default/files/2023/07/kenya_country_brief_final_en.pdf) . (Accessed on 17 November 2023)
- 561 22. Robb K, Null C, Teunis P, Yakubu H, Armah G, Moe CL. Assessment of Fecal
562 Exposure Pathways in Low-Income Urban Neighborhoods in Accra, Ghana:
563 Rationale, Design, Methods, and Key Findings of the SaniPath Study. *Am J*
564 *Trop Med Hyg.* 2017 Oct;97(4):1020–32.
- 565 23. Wang Y, Moe CL, Null C, Raj SJ, Baker KK, Robb KA, et al. Multipathway
566 Quantitative Assessment of Exposure to Fecal Contamination for Young
567 Children in Low-Income Urban Environments in Accra, Ghana: The SaniPath
568 Analytical Approach. *Am J Trop Med Hyg.* 2017 Oct;97(4):1009–19.
- 569 24. Corburn J, Njoroge P, Weru J, Musya M. Urban Climate Justice, Human Health,
570 and Citizen Science in Nairobi’s Informal Settlements. Vol. 6, *Urban Science*.
571 2022.
- 572 25. Raj SJ, Wang Y, Yakubu H, Robb K, Siesel C, Green J, et al. The SaniPath
573 Exposure Assessment Tool: A quantitative approach for assessing exposure to

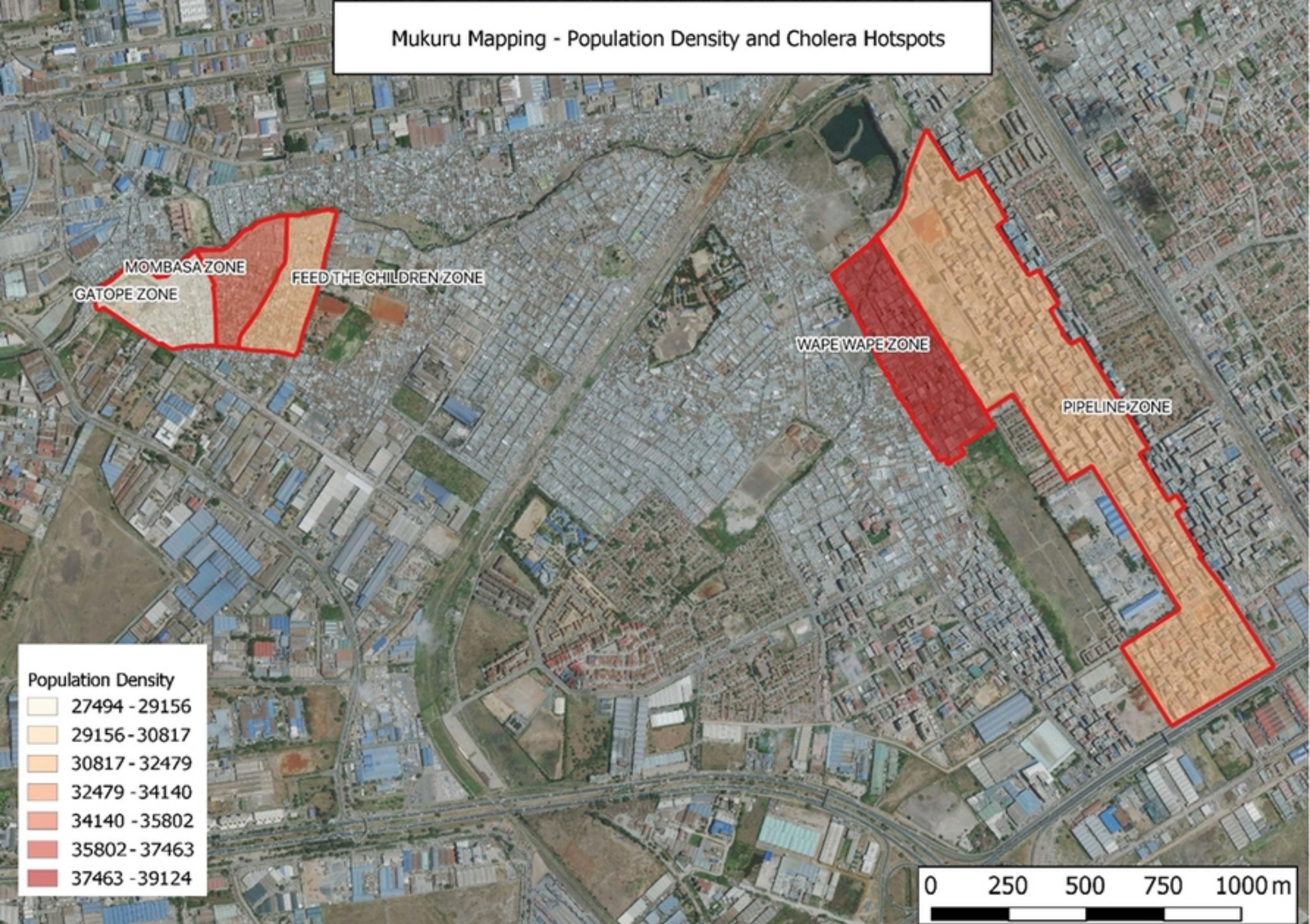
- 574 fecal contamination through multiple pathways in low resource urban
575 settlements. PLoS One. 2020;15(6):e0234364.
- 576 26. Amin N, Rahman M, Raj S, Ali S, Green J, Das S, et al. Quantitative
577 assessment of fecal contamination in multiple environmental sample types in
578 urban communities in Dhaka, Bangladesh using SaniPath microbial approach.
579 PLoS One [Internet]. 2019 Dec 16;14(12):e0221193. Available from:
580 <https://doi.org/10.1371/journal.pone.0221193>
- 581 27. Wang Y, Mairinger W, Raj SJ, Yakubu H, Siesel C, Green J, et al. Quantitative
582 assessment of exposure to fecal contamination in urban environment across
583 nine cities in low-income and lower-middle-income countries and a city in the
584 United States. Sci Total Environ. 2022 Feb;806(Pt 3):151273.
- 585 28. Jianwei H, Yumei Z, Huixin W, Jiafeng Z, Shijie H, Jianjun N, et al. Quadruplex
586 Real-Time PCR Assay for Detection and Identification of *Vibrio cholerae* O1
587 and O139 Strains and Determination of Their Toxigenic Potential. Appl Environ
588 Microbiol [Internet]. 2009 Nov 15;75(22):6981–5. Available from:
589 <https://doi.org/10.1128/AEM.00517-09>
- 590 29. Amin N, Liu P, Foster T, Rahman M, Miah MR, Ahmed GB, et al. Pathogen
591 flows from on-site sanitation systems in low-income urban neighborhoods,
592 Dhaka: A quantitative environmental assessment. Int J Hyg Environ Health
593 [Internet]. 2020;230:113619. Available from:
594 <https://www.sciencedirect.com/science/article/pii/S1438463920305654>
- 595 30. Shannon K, Hast M, Azman AS, Legros D, McKay H, Lessler J. Cholera
596 prevention and control in refugee settings: Successes and continued

- 597 challenges. *PLoS Negl Trop Dis*. 2019 Jun;13(6):e0007347.
- 598 31. Jain A, Choudhary S, Saroha E, Bhatnagar P, Harvey P. Cholera Outbreak in an
599 Informal Settlement at Shahpur Huts, Panchkula District, Haryana State, India,
600 2019. *Indian J Public Health* [Internet]. 2021;65(5). Available from:
601 [https://journals.lww.com/IJPH/Fulltext/2021/65001/Cholera_Outbreak_in_an_I](https://journals.lww.com/IJPH/Fulltext/2021/65001/Cholera_Outbreak_in_an_Informal_Settlement_at.11.aspx)
602 [nformal_Settlement_at.11.aspx](https://journals.lww.com/IJPH/Fulltext/2021/65001/Cholera_Outbreak_in_an_Informal_Settlement_at.11.aspx)
- 603 32. Simpson RB, Babool S, Tarnas MC, Kaminski PM, Hartwick MA, Naumova EN.
604 Dynamic mapping of cholera outbreak during the Yemeni Civil War, 2016–
605 2019. *J Public Health Policy* [Internet]. 2022;43(2):185–202. Available from:
606 <https://doi.org/10.1057/s41271-022-00345-x>
- 607 33. Kisera N, Luxemburger C, Tornieporth N, Otieno G, Inda J. A descriptive cross-
608 sectional study of cholera at Kakuma and Kalobeyei refugee camps, Kenya in
609 2018. *Pan Afr Med J*. 2020;37:197.
- 610 34. Piarroux R, Moore S, Rebaudet S. Cholera in Haiti. *Presse Med* [Internet].
611 2022;51(3):104136. Available from:
612 <https://www.sciencedirect.com/science/article/pii/S075549822200029X>
- 613 35. Africa WHORO for. *Weekly Bulletin on Outbreak and other Emergencies:Week*
614 17: 17 - 23 April 2023. Available from:
615 <https://apps.who.int/iris/handle/10665/367270>
- 616 36. Conner JG, Teschler JK, Jones CJ, Yildiz FH. Staying Alive: *Vibrio cholerae*'s
617 Cycle of Environmental Survival, Transmission, and Dissemination. *Microbiol*
618 *Spectr*. 2016 Apr;4(2).

- 619 37. Bwire G, Debes AK, Orach CG, Kagirita A, Ram M, Komakech H, et al.
620 Environmental Surveillance of *Vibrio cholerae* O1/O139 in the Five African
621 Great Lakes and Other Major Surface Water Sources in Uganda [Internet].
622 Vol. 9, *Frontiers in Microbiology* . 2018. Available from:
623 <https://www.frontiersin.org/articles/10.3389/fmicb.2018.01560>
- 624 38. Islam MS, Zaman MH, Islam MS, Ahmed N, Clemens JD. Environmental
625 reservoirs of *Vibrio cholerae*. *Vaccine* [Internet]. 2020;38:A52–62. Available
626 from: <https://www.sciencedirect.com/science/article/pii/S0264410X19307959>
- 627 39. Islam MS, Islam MS, Mahmud ZH, Cairncross S, Clemens JD, Collins AE. Role
628 of phytoplankton in maintaining endemicity and seasonality of cholera in
629 Bangladesh. *Trans R Soc Trop Med Hyg* [Internet]. 2015 Sep 1;109(9):572–8.
630 Available from: <https://doi.org/10.1093/trstmh/trv057>
- 631 40. Colwell RR, Brayton P, Herrington D, Tall B, Huq A, Levine MM. Viable but non-
632 culturable *Vibrio cholerae* O1 revert to a cultivable state in the human
633 intestine. *World J Microbiol Biotechnol*. 1996;12:28–31.
- 634 41. Brenzinger S, van der Aart LT, van Wezel GP, Lacroix JM, Glatter T, Briegel A.
635 Structural and Proteomic Changes in Viable but Non-culturable *Vibrio cholerae*.
636 *Front Microbiol*. 2019;10:793.
- 637 42. Senoh M, Ghosh-Banerjee J, Ramamurthy T, Hamabata T, Kurakawa T,
638 Takeda M, et al. Conversion of viable but nonculturable *Vibrio cholerae* to the
639 culturable state by co-culture with eukaryotic cells. *Microbiol Immunol*
640 [Internet]. 2010 Sep 1;54(9):502–7. Available from:
641 <https://doi.org/10.1111/j.1348-0421.2010.00245.x>

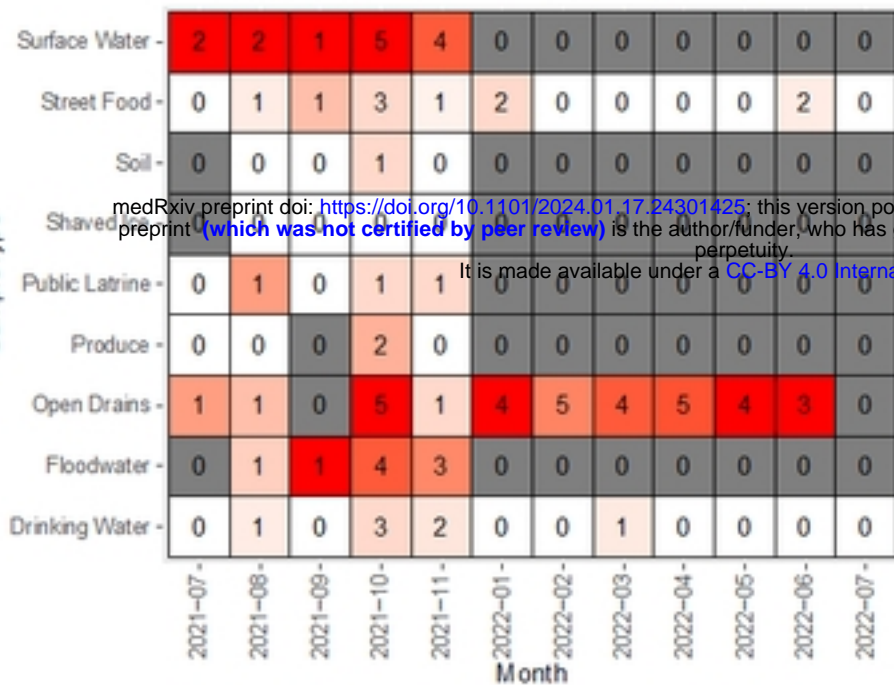
- 642 43. Eurien D, Mirembe BB, Musewa A, Kisaakye E, Kwesiga B, Ogole F, et al.
643 Cholera outbreak caused by drinking unprotected well water contaminated
644 with faeces from an open storm water drainage: Kampala City, Uganda,
645 January 2019. *BMC Infect Dis* [Internet]. 2021;21(1):1281. Available from:
646 <https://doi.org/10.1186/s12879-021-07011-9>
- 647 44. Greibe Andersen J, Kallestrup P, Karekezi C, Yonga G, Kraef C. Climate change
648 and health risks in Mukuru informal settlement in Nairobi, Kenya – knowledge,
649 attitudes and practices among residents. *BMC Public Health* [Internet].
650 2023;23(1):393. Available from: <https://doi.org/10.1186/s12889-023-15281-y>
- 651 45. Kwesiga B, Pande G, Ario AR, Tumwesigye NM, Matovu JKB, Zhu BP. A
652 prolonged, community-wide cholera outbreak associated with drinking water
653 contaminated by sewage in Kasese District, western Uganda. *BMC Public*
654 *Health* [Internet]. 2017;18(1):30. Available from:
655 <https://doi.org/10.1186/s12889-017-4589-9>
- 656 46. Okello PE, Bulage L, Riolexus AA, Kadobera D, Kwesiga B, Kajumbula H, et al.
657 A cholera outbreak caused by drinking contaminated river water, Bulambuli
658 District, Eastern Uganda, March 2016. *BMC Infect Dis*. 2019 Jun;19(1):516.
- 659 47. Jubair M, Morris Jr. JG, Ali A. Survival of *Vibrio cholerae* in Nutrient-Poor
660 Environments Is Associated with a Novel “Persister” Phenotype. *PLoS One*
661 [Internet]. 2012 Sep 18;7(9):e45187. Available from:
662 <https://doi.org/10.1371/journal.pone.0045187>
- 663

Mukuru Mapping - Population Density and Cholera Hotspots

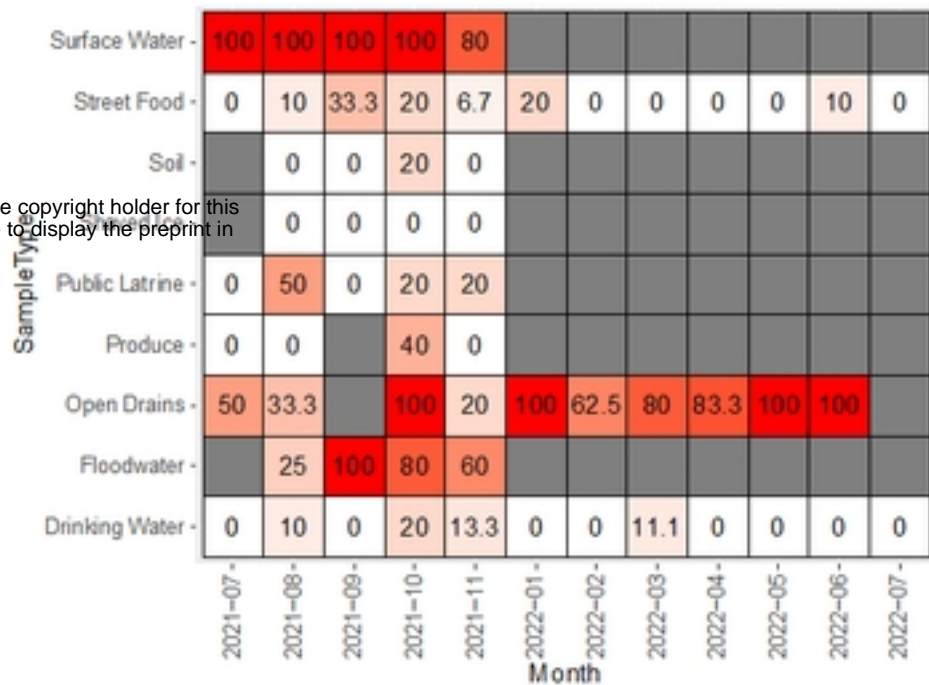


Figure

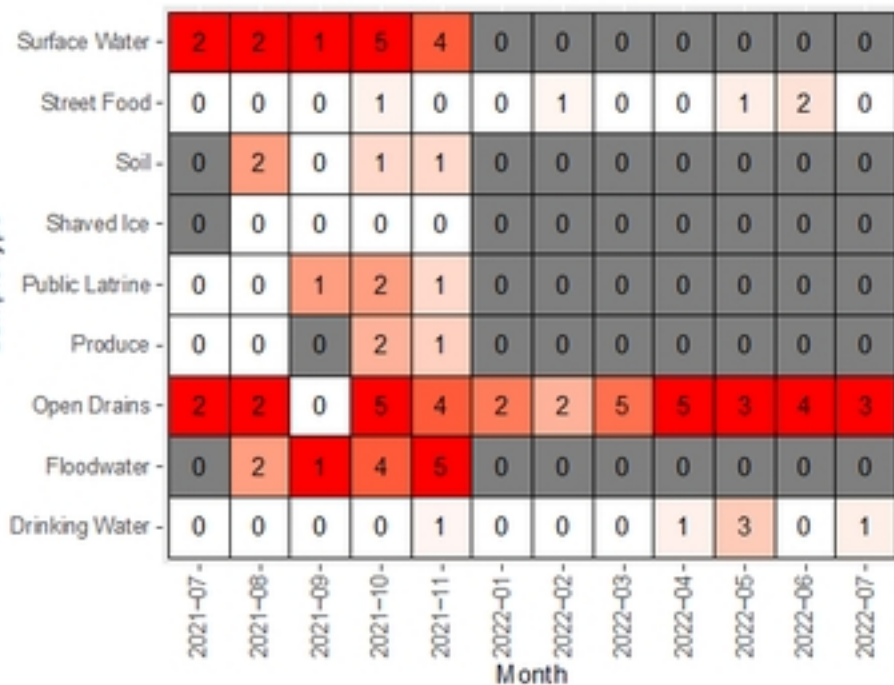
The Number of Positive Samples (Reuben)



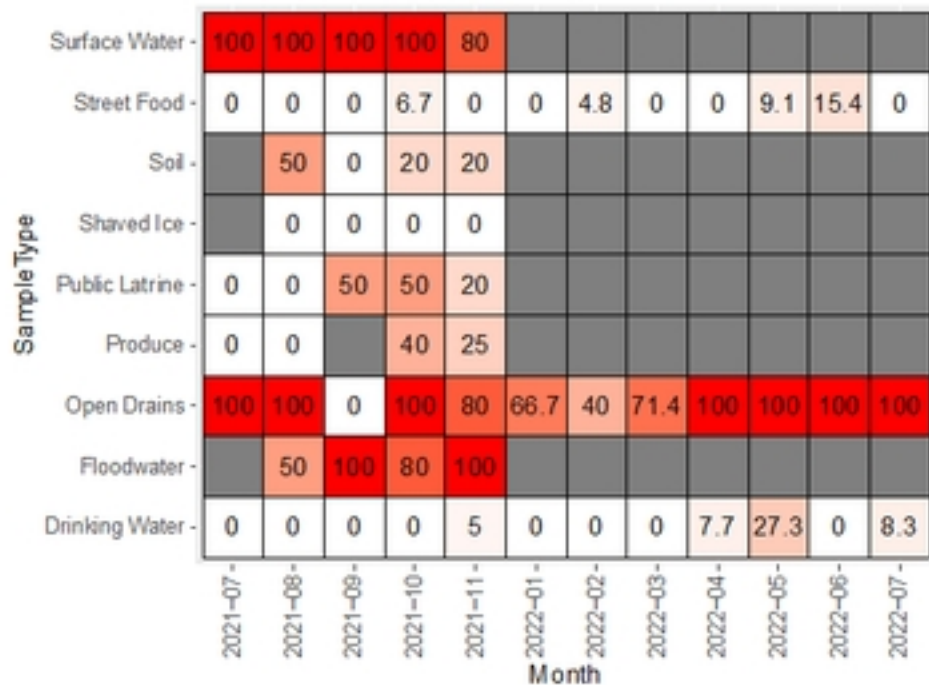
The Percent of Positive Samples (Reuben)



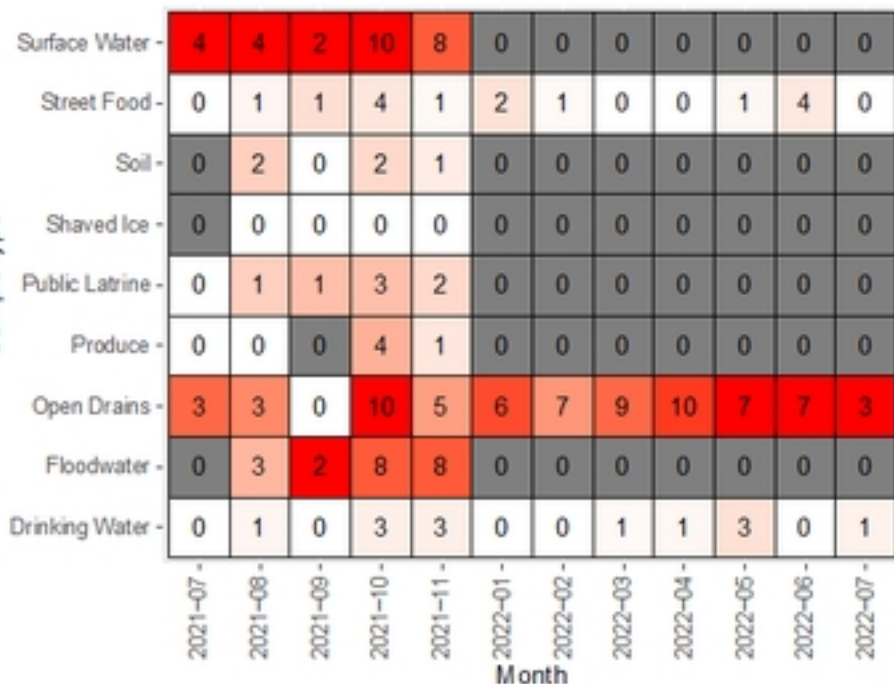
The Number of Positive Samples (Njenga)



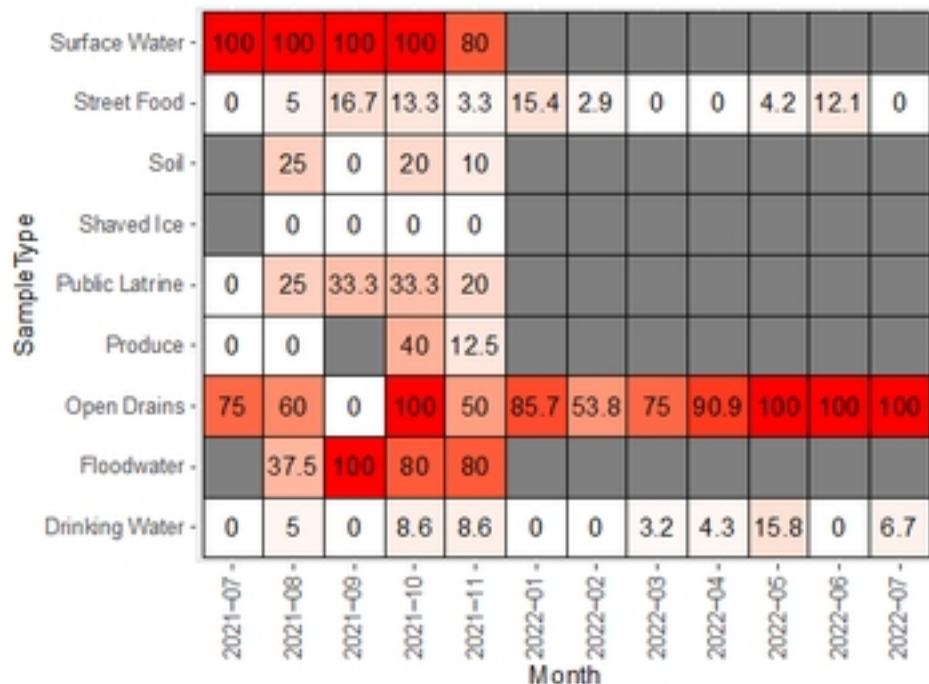
The Percent of Positive Samples (Njenga)



The Number of Positive Samples (Total)



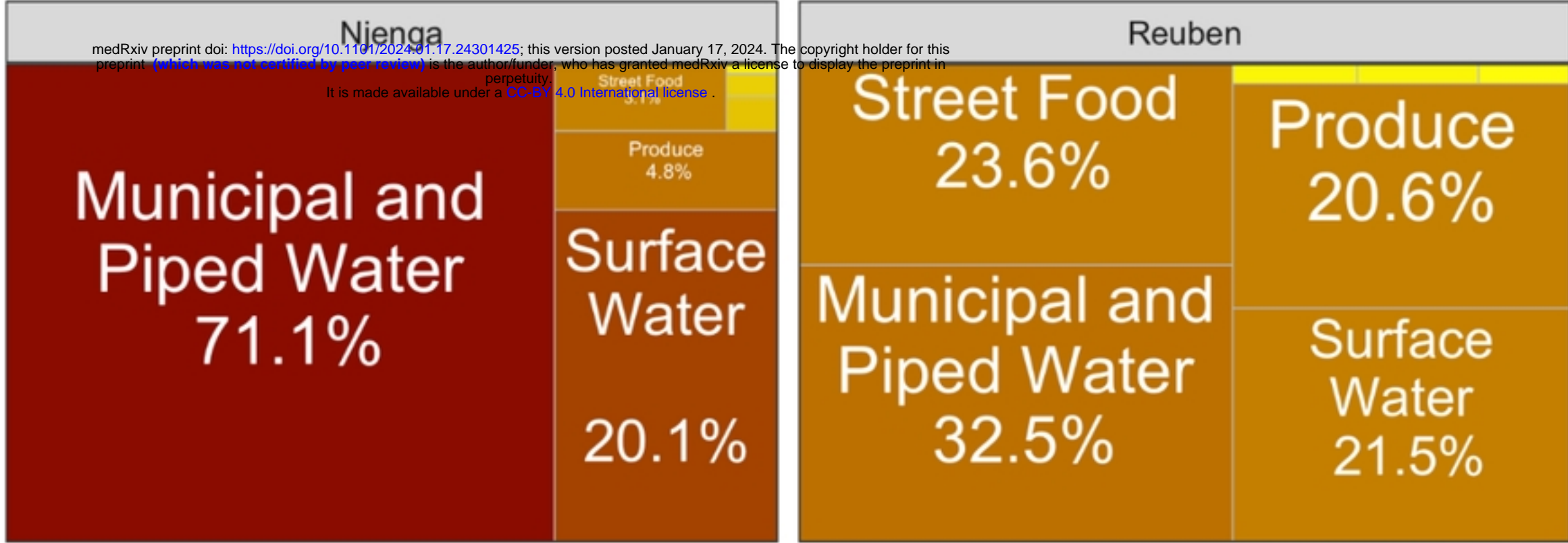
The Percent of Positive Samples (Total)



Figure

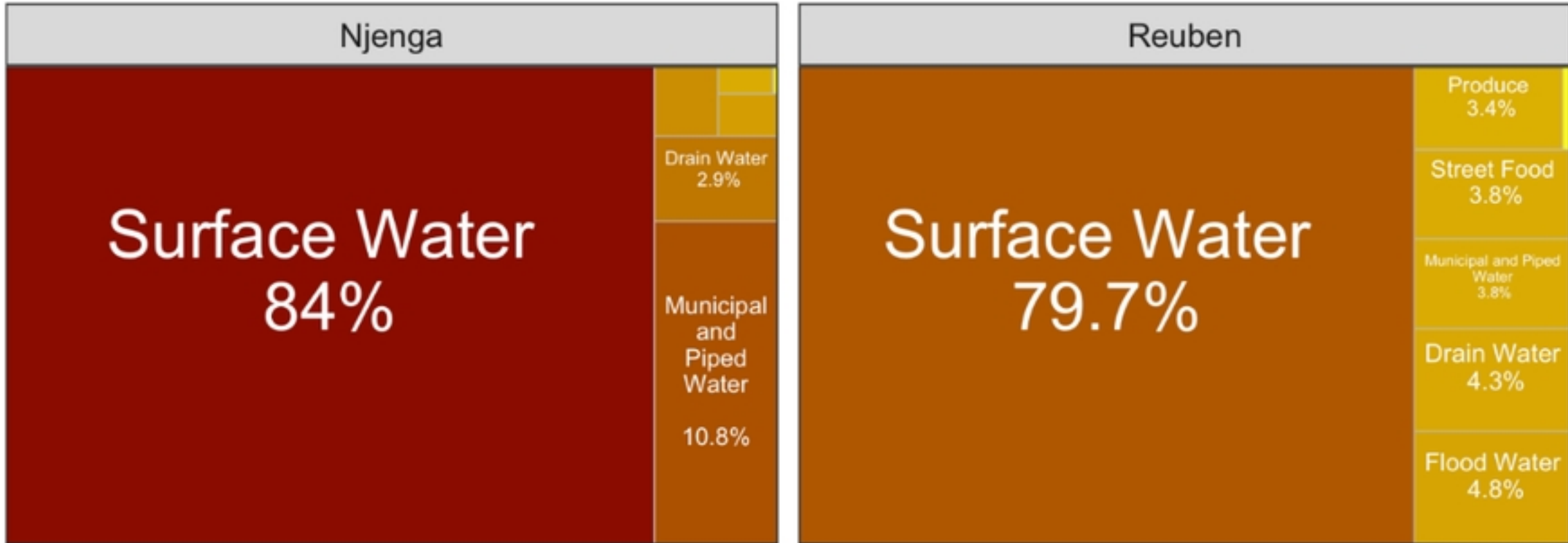
Total Exposure in Nairobi, Kenya

Adults



Total Exposure in Nairobi, Kenya

Children



Figure