

Endogenous retroelement activation is implicated in IFN- α production and anti-CCP autoantibody generation in early RA

Faye AH Cooles¹, Gemma V Pedrola¹, Najib Naamane¹, Arthur G Pratt^{1,2} Ben Barron-Millar¹, Amy E Anderson¹, Catharien MU Hilkens¹, John Casement³, Vincent Bondet⁴, Darragh Duffy⁴, Fan Zhang⁵, Ruchi Shukla^{6,7} and John D Isaacs^{1,2}

¹Translational and Clinical Research Institute, Newcastle University, Newcastle upon Tyne, UK.

²Musculoskeletal Unit, Newcastle Hospitals NHS Foundation Trust, Newcastle upon Tyne, UK.

³Bioinformatics Support Unit, Newcastle University, Newcastle upon Tyne. UK

⁴Translational Immunology Unit, Institut Pasteur, Université Paris Cité, Paris, France.

⁵Department of Biomedical Informatics, Harvard Medical School, Boston, MA, USA.

⁶Biosciences Institute, Newcastle University Centre for Cancer, Newcastle University, Newcastle upon Tyne, NE2 4HH, UK.

⁷Department of Applied Sciences, Northumbria University, Newcastle upon Tyne, NE1 8ST, UK.

Corresponding Author: Dr Faye A H Cooles,

Address: Musculoskeletal Research Group, Institute of Translational and Clinical Research, Framlington Place, Newcastle University, Newcastle upon Tyne, United Kingdom. NE2 4HH

Email: faye.cooles@ncl.ac.uk

Telephone: +44191 2085337

Abstract

Objectives: Endogenous retroelements (EREs) stimulate type 1 interferon (IFN-I) production but have not been explored as potential interferonogenic triggers in Rheumatoid Arthritis (RA). We investigated ERE expression in early RA (eRA), a period where IFN-I is increased.

Methods: ERE expression in DMARD naïve eRA whole blood (LINE1; RT-PCR) and bulk synovial tissue (LTR5, LINE1, SINE; Nanostring) was examined alongside IFN- α activity. Circulating lymphocyte subsets, including B cell subsets, from eRA patients and early psoriatic arthritis (PsA), were flow cytometrically sorted and similarly examined. Existing established RA and osteoarthritis (OA) synovial single-cell sequencing data was re-interrogated to identify repeat elements, and associations explored.

Results: There was significant co-expression of all ERE classes and *IFNA* in eRA synovial tissue (n=22, p<0.0001) and significant positive associations between whole blood LINE1 expression (n=56) and circulating IFN- α protein (p=0.018) and anti-CCP titres (p<0.0001). ERE expression was highest in circulating eRA B cells, particularly naïve B cells compared with PsA, with ERE regulation by *SAMDH1* implicated and associations with *IFNA* again observed. Finally, in established RA synovium, LTRs, particularly ERVK, were most increased in RA compared with OA where, for all synovial subsets (monocytes, B cells, T cells and fibroblasts), ERE expression associated with increased IFN-I signalling (p<0.001).

Conclusions: Peripheral blood and synovial ERE expression is examined for the first time in eRA highlighting both a potential causal relationship between ERE and IFN-I production and an intriguing association with anti-CCP autoantibodies. This suggests EREs may contribute to RA pathophysiology with implications for future novel therapeutic strategies.

Introduction:

Type 1 interferons (IFN-I) have pleiotropic effects on the immune system and prime cellular responses to effectively clear, typically viral, infection (1). In this context widespread cellular activation is desirable but in the absence of infection, IFN-I associated increased cellular priming/activation can be inappropriate (2). Excess IFN- α can promote breach of tolerance in autoantibody producing B cells (3, 4) as well as facilitating more effective presentation of antigen, potentially of self-components (5, 6). We have previously demonstrated increased IFN-I signaling and serum IFN- α levels in early rheumatoid arthritis (RA) with negative prognostic implications on initial disease control and clinical outcomes (7, 8). An elevated interferon gene signature (IGS) also increases the likelihood of progression to RA in at risk populations, such as those with anti-cyclic citrullinated peptide (CCP) positive arthralgia (7-13). However, it remains unknown what drives this IFN-I release in early RA.

Endogenous retrotransposons or retroelements (EREs) are sequences of DNA derived from ancient transposable elements, such as retroviruses, that have been historically incorporated into the genome (14). While the majority are inactive, some have retained transcriptional activity and their replication cycle and organization is similar to exogenous retroviruses, such as human immunodeficiency virus (HIV) (15). They can be sub-divided into endogenous retroviruses (ERVs), often detected as long terminal repeats (LTRs), long interspersed nuclear element 1 (LINE-1) and short interspersed nuclear elements (SINEs), most commonly "Alu". Retrotransposons can replicate, generating a strand of mRNA and, subsequently, a double stranded RNA product which then inserts into a unique region of the genome, often separate from the area of origin; depending upon the site of insertion, this potentially disrupts protein coding regions (5, 16). This process of active retrotransposition results in the accumulation of cytosolic single stranded DNA, which triggers an IRF3-dependent innate immune response, including release of IFN-I. (17-19). Indeed, single

mutations in human genes that regulate retroelement replication, such as *TREX1* or *SAMHD1*, cause type 1 interferonopathies such as Aicardi-Goutieres syndrome (AGS) (20).

The potential for an association between EREs and IFN-I production in autoimmunity is increasingly appreciated (17-21). In diseases where IFN-I are known to play a pathogenic role, such as systemic lupus erythematosus (SLE) or primary Sjogren's syndrome (PSS), there is evidence of increased ERE activity in disease relevant tissue associated with increased local IFN- α production (21). Established RA synovium was shown to overexpress LINE1 nearly 2 decades ago (22, 23). Some ERVs retain their ability to produce viral protein, and ERV viral protein products have been detected in the peripheral circulation of RA patients and linked to autoantibody generation (24-27). However, EREs have not been examined in RA in relation to IFN-I production nor in early RA, a period where IFN-I signaling, and autoantibody generation, is important. We therefore explored ERE expression in whole blood, circulating lymphocyte subsets and synovial tissue from treatment naïve early RA patients, examining associations with IFN-I generation and autoantibody status.

Methods:

Patient cohorts

Glucocorticoid and disease-modifying anti-rheumatic drug (DMARD)-naïve patients attending Newcastle-upon-Tyne Hospitals, were enrolled for this study from the Northeast Early Arthritis Cohort (NEAC) if their initial consultant rheumatologist diagnosis was RA (with reference to 2010 ACR/EULAR RA classification criteria; early RA patients, eRA) or psoriatic arthritis (PsA, determined an early disease control group). Contemporaneous clinical parameters were recorded, including disease activity scores (DAS-28-ESR), immunoglobulins (IgG, IgA, IgM), inflammatory markers (CRP and ESR) and serological status, (rheumatoid factor and anti-cyclic citrullinated peptide titres; RF and anti-CCP).

Patient and public involvement

Patients and the public were not formally involved in the design, conduct or reporting of this research.

Interferon gene signature (IGS) and serum cytokines

Serum was spun and frozen within 4 hours of blood draw, undergoing no more than one freeze-thaw cycle before measurement of IFN- γ , IL-6, IL-12p70, TNF- α , IL-1 β , IL-2, IL-13, IL-4, IL-10 by MSD technology (Meso Scale Discovery, MD, USA) as per manufacturers' instructions. Serum IFN- α was measured using the digital Simoa platform as described (7). Serum IFN monoclonal antibodies (specific for all IFN- α subtypes) were isolated from APECED patients (28) and provided to DD by Immunoqure under an MTA. The IGS (interferon gene signature) was generated from whole blood RNA as described previously (29). The mean expression of 5 interferon response genes (IRGs) *MxA*, *IFI6*, *OAS1*, *ISG15* and *IFI44L* was termed the IGS as previously described (8).

Flow cytometric cell sorting

For all samples peripheral blood mononuclear cells (PBMCs) were isolated from whole blood using density centrifugation and underwent immediate flow cytometric sorting. Plasmacytoid dendritic cells (pDCs), conventional CD1c⁺ DCs, CD4⁺ T cells, CD8⁺ T cells, CD19⁺ B cells, and CD14⁺ monocytes were sorted as previously described (29) and B cell subsets including naïve B cells (CD19⁺IgD⁺CD27⁻), memory B cells (CD19⁺IgD⁻CD27⁺), CD5⁺ B cells (CD19⁺CD5⁺) and age associated B-cells (ABCs, CD19⁺CD11c⁺CD21⁻) were flow cytometrically sorted from both early RA and early PsA patient PBMCs as previously described (30).

Endogenous retroelement quantification

Whole blood and circulating lymphocytes

Whole blood RNA was isolated using the Tempus Spin Isolation Kit (Tempus, Thermo-Fisher Scientific, MA, USA) and treated with TurboDNase (Ambion, TX, USA) to remove any contaminating genomic DNA (gDNA). RNA was reverse-transcribed to cDNA using Superscript II (Thermo-Fisher Scientific, MA, USA) and gene specific primers for L1 and housekeeper TATA-binding protein (TBP) as previously described (31), (supplementary file 1). The absence of gDNA was confirmed by *HBP1* PCR and gel electrophoresis (supplementary file 2). RT-PCR using SYBR Green Master Mix (Thermo Fisher Scientific) was performed using specific primers for L1-5'UTR and TBP (supplementary file 1). Subsequent expression was displayed as a ratio of a biological control (HEK293T cell line ERE expression) to minimise any batch effects.

Sorted cell subsets were processed as previously described (29, 30). In brief, the contemporaneous lymphocyte subsets had RNA isolated using Qiagen RNeasy Plus Micro Kits which was then applied to a gDNA Eliminator spin column (both Qiagen, Germany) as per manufacturer's instructions. For the B cell subsets, 15000 cells were sorted into RF10 (RPMI 1640 culture medium containing 10% FCS; both Sigma-Aldrich). After sorting, the cells were pelleted and lysed in Buffer RLT (Qiagen). Either 500ng of RNA or the lysate from 15000 cells respectively was loaded onto a NanoString nCounter Human immunology V2 Panel chip (NanoString Technologies Inc., WA, USA) including customized probes against ALUYa5, AluYb9, LTR5, L1-5'UTR and L1-ORF2 (supplementary file 3) and analyzed according to manufacturer's instructions.

Synovial tissue

Synovial biopsy specimens of wrist/knee joints were retrieved as described (32) using a 16-gauge Quick-Core Biopsy Needle [Cook Medical] or Temno Biopsy Needle [Carefusion/Becton Dickinson] from consenting individuals prior to the commencement of immunomodulatory therapy, including systemic glucocorticoids. Tissue was paraffin-embedded as previously described, approximately 24 hours after collection, into 10% neutral buffered formalin (33). Total RNA was extracted from curls taken from FFPE blocks using the RNeasy FFPE kit, and quality-assessed by Qubit fluorometric

quantitation according to manufacturers' instructions. Samples that passed QC (25ng) for transcriptional profiling employed the nCounter® PanCancer Immune profiling codeset panel, modified to include probes for EREs (supplementary file 3); this was carried out using the NanoString nCounter® FLEX analysis system according to the manufacturer's instructions.

In silico analysis of established RA synovial tissue single cell sequencing datasets

RepEnrich is a computational method that allows analysis of repetitive elements in any organism with a reference genome available that has repetitive element annotation (34). This platform was applied to freely available established RA and OA synovial tissue single cell data (<https://immunogenomics.io/ampra>) from the Accelerating Medicines Partnership Rheumatoid Arthritis and Systemic Lupus Erythematosus Consortium (35). Full analysis details in supplementary file 4. Comparison between synovial cell subsets was performed using the cellular clustering described in (35).

Statistical analysis

GraphPad Prism (V.5.0; GraphPad Software, La Jolla, Calif) and R Core Team (2020) software was used. Univariate generalized linear models, Mann–Whitney *U* tests, one-way ANOVA (with Tukey's *post hoc* analysis) and Wilcoxon-signed rank tests were performed employing a significance threshold where $\alpha=5\%$. Lymphocyte and B cell subsets NanoString nCounter data analysis was performed in R (v4.2.1) as described previously (29, 30). Synovium data was processed similarly, as outlined in supplementary file 5.

Results:

Patient cohorts

The whole blood LINE1 analysis cohort included 56 patients with early RA (eRA). Simultaneous B cell, T cell, DC and monocyte cell specific retroelement expression was obtained from 8 rheumatoid

factor positive and anti-CCP positive (double seropositive) eRA patients. B cell subset expression was assessed amongst double seropositive eRA and early PsA patients (n=4 each) matched for age and sex, with comparable levels of inflammation (CRP, ESR). The synovial tissue cohort comprised 22 eRA patients. Full demographical and clinical data are shown for all the cohorts in Table 1.

Early RA synovial and peripheral blood endogenous retroelement expression associates with increased IFN- α

In early RA whole synovial tissue, hierarchical clustering of co-expression correlations of all available genes demonstrated clustering of *IFNA* and retroelements, figure 1A. A heatmap of the correlations between genes within the ERE cluster is shown in supplementary file 6. Pathway analysis (KEGG) of the ERE cluster implicated enrichment of JAK-STAT signalling ($p=0.004$), primarily due to association with IFN- α , an enrichment also seen in GO terms ($p=2.71 \times 10^{-6}$), supplementary file 6. *IFNA* transcripts (*IFNA1*, *IFNA2*, *IFNA7*, *IFNA8* and *IFNA17*) significantly positively associated with all classes of ERE (figure 1B) but was strongest for LTR5: *IFNA17*, $R=0.91$, Pearson correlation coefficient, BH corrected $p = 4.68 \times 10^{-9}$. There was no significant association with any other cytokine transcript, including IFN- γ , IL-6, IL-12 p70, TNF- α , IL-1 β , IL-2, IL-13, IL-4 and IL-10 (data not shown). In early RA whole blood, there was a highly significant positive association between LINE1 transcript expression and circulating IFN- α protein, $p=0.018$ (figure 1C). This was not seen with any of the other circulating cytokines measured: IFN- γ , IL-6, IL-12 p70, TNF- α , IL-1 β , IL-2, IL-13, IL-4 and IL-10, $p>0.05$ for all, data not shown. There was no significant association between the whole blood IGS and LINE1 transcript expression (figure 1D) despite a positive trend ($p=0.06$) between the IGS and circulating IFN- α (data not shown). Finally, whole blood LINE1 expression did not correlate with age nor sex, supplementary file 7.

Early RA whole blood LINE1 expression correlates with anti-CCP titres

There was a significant positive association between anti-CCP titres (IU) and LINE1 (L1-5'UTR, linear regression, $p<0.0001$, $R^2=0.38$) which was not seen for RF titres (figure 2A, 2B). Expression did not

appear to reflect global B cell function as there was no association between circulating immunoglobulin levels, IgM, IgG or IGA and whole blood LINE1 (linear regression, $p > 0.4$ for all) (figure 2C). Smoking is implicated in both anti-CCP generation and ERE activity (36, 37), however, there was no significant difference in whole blood LINE1 expression between cohorts based on smoking status ($p > 0.05$, ANOVA), figure 2D. There was also no significant association between LINE1 expression and disease activity (DAS-28), nor its components including, TJC, SJC, VAS, CRP and ESR (data not shown).

Circulating early RA B cells, particularly naïve and CD5 subsets, have increased ERE expression which associates with increased IFNA transcript.

LTR5, LINE1 and AluYa5 expression was compared between lymphocyte subsets (B cells, pDCs, CD1c⁺ DCs, CD14⁺ monocytes, CD8⁺ and CD4⁺ T cells) from 8 double seropositive early RA (eRA) patients. ERE expression was significantly increased in B cells compared with other lymphocyte subsets (figure 3A). ERE activity in the B cell compartment was examined further comparing ABCs, naïve, memory and CD5⁺ B cells in eRA, with early psoriatic arthritis patients (PsA) as disease controls. There was a trend towards increased expression of ERE in eRA patients in all subsets, which became highly significant for naïve B-cells (figure 3B).

In eRA pooled B cells, ERE significantly associated with *IFNA* transcript (figure 3C and 3D). Hierarchical clustering of co-expression correlations of all available genes further demonstrated clustering of *IFNA* and EREs, supplementary file 8. Clusters were visually defined and heatmap of the correlations between the genes within the ERE cluster is shown in supplementary file 9. Pathway analysis of this cluster in eRA alone demonstrated limited terms achieving significance, however when examining pooled PsA and eRA data, increased ERE expression was associated with enrichment of KEGG pathways relating to viral infection as well as PI3K-Akt signalling, and GO terms were enriched for lymphocyte activation involved in immune response ($p = 0.0005$) supplementary file 9.

Furthermore, in eRA there was significantly increased *IFNA2* transcript in naïve and CD5 B cells compared with memory B cells, a pattern not seen in PsA (Figure 3F), and, when comparing directly between eRA and PsA, there was a trend towards higher expression of *IFNA2* in eRA Naïve B cells than in PsA Naïve B cells, although this was not significant (supplementary file 10). Finally, to explore potential signalling pathways we examined associations between EREs and key innate immune sensors, RIG-1, MDA5, TLR7, cGAS and TLR9 in the pooled lymphocyte subsets. A significant positive association was only seen between RIG-1 and LTR5 ($R^2 = 0.64$, $p < 0.05$), supplementary file 11.

SAMHD1 implicated in early RA peripheral blood B cell retroelement replication.

To evaluate potential mechanisms driving increased ERE transcripts in circulating B cells, we examined expression of key enzymes involved in their activation. SAM and HD Domain Containing Deoxynucleoside Triphosphate Triphosphohydrolase 1 transcript (*SAMHD1*), an enzyme limiting retroelement replication (38), was significantly reduced in early RA B cells when compared with all other circulating lymphocytes ($p < 0.001$) (Figure 4A). Furthermore, early RA expression of *SAMHD1* inversely correlated with pooled lymphocyte ERE transcript expression (Figure 4B, supplementary file 12). *SAMHD1* expression was significantly reduced ($p < 0.01$) in eRA naïve B cells compared to ABCs and a trend noted for reduced expression compared with memory and CD5+ B cells. This pattern was not seen in PsA controls (Figure 4C). Finally, *SAMDH1* was uniquely and significantly reduced in early RA naïve B cells ($p < 0.005$) compared with PsA naïve B cells (Figure 4D). Ribonuclease H degrades RNA in RNA/DNA hybrids and expression of one of its key components, Ribonuclease H2 subunit A (*RNASEH2A*), was similar across all lymphocyte subsets and did not correlate with ERE expression. Conversely, three prime repair exonuclease 1 (*TREX1*), another key enzyme negatively regulating ERE expression, varied by cell subset with lowest expression in T cells. There was an inverse association between *TREX1* and ERE expression in early RA pooled

lymphocytes, but expression in B cell subsets between early RA and PsA cohorts was comparable (all supplementary file 13).

Early RA bulk synovial expression of ERE did not associate with *SAMHD1*, *TREX1* nor *RNAseH2* and, in neither circulating early RA lymphocyte subsets, nor in synovial tissue did *DNMT1*, *DNMT3A* or *DNMT3B* (DNA methyltransferase enzymes, important in the epigenetic regulation of EREs) associate with ERE expression.

The LTR class is universally increased in all RA synovial cell subsets and cluster with increased IFN- γ signalling.

Given differences in ERE expression observed in peripheral blood subsets, and correlation profiles between early RA bulk synovial *IFN* transcript and ERE classes (Fig 1), we wished to examine synovial tissue in more detail. Synovial single cell transcriptomic data from established RA and osteoarthritis (OA) patients was grouped into B cells, fibroblasts, monocytes and T cells as previously described (35) and reinterrogated for repeat element expression. This generated multiple individual ERE expression counts that could be grouped into class, such as LTR. Examination of the individual ERE expression counts, when grouped into class, demonstrated that in all RA synovial cell subsets, at a single cell level, LTR was proportionally the most highly expressed class (Figure 5A). Individual ERE expression counts were compared between OA and RA and the proportion of all individual ERE expression counts within each class that were comparatively either reduced or increased in RA for each cell subset demonstrated (Figure 5B and supplementary file 14). In RA, the majority of ERE expression counts within the LTR class were increased for all synovial cellular subsets, whereas counts in the LINE and SINE class were predominantly decreased. Individual ERE fold changes in supplementary data S1.

Given that the LTRs were most widely increased in RA we examined this class in more detail. LTRs consist of endogenous retroviruses (ERVs) families, ERV1, ERVK, ERVL, ERVL-MaLR, and individual ERE counts within these families were compared between RA and OA. Individual ERE expression

counts increased in RA B cells compared with OA for each ERV family is shown in Figure C. When comparing the comparative increased counts (Log2Fold) in RA versus OA between the ERV families, overall expression was greatest in the ERVK family (Kruskal Wallis, $p < 0.0001$), Figure 5C.

For all ERV families, hierarchical clustering of correlations between gene expression and ERE expression counts was performed. In all cell subsets there was a positive correlation between IFN- α response genes (*IFI44L*, *OAS1*, *IFI6*, *ISG15* and *Mx1*) and LTR expression grouped by ERV family. All correlations met statistical significance with $p < 0.001$. Figure 5D depicts B cell correlations (supplementary file 15 for remaining cell subsets). *IFNA* counts were too low for comparable analysis to be performed. Pathway analysis of the top 20 pathways correlating with LTR repeats across cell subsets demonstrated enrichment of viral response (SARS-CoV-2), antigen processing pathways and antimicrobial humoral response in B cells (Figure 5E)

Discussion

We examined endogenous retroelements (EREs) for the first time in drug naïve early RA and demonstrate that EREs are transcriptionally active in both whole blood and synovial tissue, with variable expression across circulating lymphocyte subsets. Expression was highest in B cells, particularly naïve B cells, which was not seen in PsA. We demonstrate for the first time that ERE activity in early RA blood and synovial tissue associates with increased IFN- α at both transcript and protein level. We also saw a marked positive association between ERE and CCP titres. Cumulatively, these data suggest that EREs may contribute to RA pathophysiology.

In eRA bulk synovial tissue we identified a significant positive association between *IFNA* transcript and ERE expression, particularly noted with LTR5. LTR5 expression denotes ERVK (HML-2) activity (39) which has been recently integrated into the human genome, and multiple copies possess potential biological activity (40). Indeed, some of the most compelling evidence of the involvement of EREs in RA has implicated this ERV, which has been detected in RA patient plasma, higher levels associating with active disease (41). Although ERVK transcripts have previously been detected in

established RA blood and synovial tissue (41, 42), this is the first time they have been demonstrated in early disease and in association with IFN- α upregulation. Furthermore, when re-analysing an independent, established RA synovial tissue scSeq dataset in the public domain, we observed ERVK to be the most upregulated subtype when compared with other ERVs. In contrast however to early RA bulk synovial tissue analyses, we could find no direct association between ERE expression and *IFNA* transcript in scSeq data from major cellular subsets in established RA, although there was evidence of increased downstream IFN-I signalling. We previously showed circulating IFN- α declines during the first 6 months after RA diagnosis (7), potentially explaining this difference from early RA, although the influence of distinct cellular composition and/or sampling technique cannot be excluded. ERVs also induce TNF- α (43), which induces IRG expression independently of IFN-I in RA synovial fibroblasts, an association we also identified in our pathway analysis (44) and this process may become dominant in established disease. Nonetheless, the clear association of ERE expression in RA synovial tissue with both *IFNA* transcript and IFN-I signalling mirrors what is seen elsewhere in autoimmunity (21) and warrants further exploration.

Although examining RA synovial tissue is optimal, circulating immune cell subsets may contribute to, or reflect, tissue specific processes. Notably, early RA synovial fluid IFN- α levels are comparable to those in the circulation (7). In early RA, we demonstrated positive associations between EREs and circulating B cell *IFNA* transcript levels as well as between whole blood *LINE1* activity and circulating IFN- α protein levels. The dsRNA sensor RIG-1 was potentially implicated in ERE sensing by these data, consistent with our previously reported association between RIG-1 and circulating IFN- α levels in early RA (7). An association between *IFNA* transcript and whole blood retrotransposon activity has recently been reported in other autoimmune diseases (45) but our demonstration of an association with IFN- α protein reinforces potential biological relevance in RA. Similar to other autoimmune diseases (45), we did not find a significant association between retrotransposon activity and downstream IFN-I signalling, although we noted a trend towards an inverse association with the IGS.

This may be because many IRGs are potent LINE1 negative regulators (46) and thus examining protein levels, where possible, may be optimal.

This is the first time all major classes of EREs have been simultaneously examined in circulating lymphocyte subsets, wherein we found highest ERE expression in B cells, particularly naïve B cells. Although background inflammation levels could affect ERE activity (27), expression levels were increased in RA B cell subsets compared with early PsA patients matched for inflammation. Furthermore, ERE expression in eRA whole blood was independent of other circulating inflammatory cytokines. In keeping with this differential ERE expression, there was increased *IFNA* transcript in RA naïve B cells. Single cell analysis of RA circulating B cell subsets previously demonstrated increased sensitivity to IFN- α and increased *IFNA* transcript in RA naïve B cells, resulting in increased basal activation and proliferation (47). The role of IFN- α in B cell function and pathophysiology of autoimmunity has been well established whereby it can enhance B cell proliferation, activation and autoantibody production (3). Pre-treatment with IFN- α also enhances pathological B cell proliferative responses and plasmablast differentiation (48). This potentially associates EREs to known RA pathophysiological processes via enhanced IFN-I signalling. EREs may also be implicated in B cell driven autoimmunity independently of IFN- α , via antibody responses to cell components associated with ERE nucleic acid, allowing molecular mimicry and cross activation to occur (24, 49). Overlap between rheumatic disease associated autoantibodies, including anti-Ro60 and RF, have been linked to ERE activity (26, 27, 50). We also showed a significant positive association between whole blood LINE1 activity and anti-CCP titres, and our pathway analysis suggested a positive correlation between synovial B cell EREs and antigen processing and presentation. Antibodies against HERV-K *env*, as well as against its citrullinated form, have been detected in established RA, are increased in ACPA+ patients, and positively correlate with CCP titres (51). Together these data hint at a role for EREs in promoting B cell dysfunction in RA.

Variation in circulating B cell ERE expression was associated with a reciprocal decrease in *SAMHD1*. This enzyme depletes intracellular dNTP pools thus limiting ERE replication and its deficiency has been implicated in interferonopathies (52). *SAMHD1* expression can vary between cell subsets (53) and, in B cells, is increased in G1 cell cycle phases where it can enhance the development of high affinity antibodies (54). Naïve B cells, in phase G0, theoretically therefore would have lower levels of *SAMHD1* and thus increased ERE expression, as we demonstrated. We also saw enrichment of P13k/AKT signalling in B cells, and in AGS this pathway has been implicated in linking *SAMHD1* deficiency to increased IFN-I response (55). *SAMHD1* expression levels do not necessarily correlate with its dNTPase activity and cellular dNTP availability (53), nevertheless the reciprocal variability in expression levels between ERE expression and *SAMHD1* are suggestive that an association may exist. We did not see any link between *SAMHD1* expression and synovial ERE expression, and other retrotransposon regulatory mechanisms may be more relevant here, such as epigenetic silencing (21, 56), promoter methylation having been shown to affect LINE1 activity in autoimmune diseases (21, 45). Although we did not explore these mechanisms in detail, we did not see any difference between retrotransposon activity and DNMT1, DNMT3A or DNMT3B expression, known epigenetic modifiers of ERE activity (45). This may reflect sample size but may also suggest other mechanisms are dominant, such as *SAMHD1* in B cells, or even differential expression in the recently described HUSH complex, a known gatekeeper of ERE induced IFN-I expression (56). These provide promising avenues for future research.

In conclusion, we examine for the first-time endogenous retroelement (ERE) activity in early RA and present potentially important associations between ERE activity, IFN-I, B-cell function and autoantibody generation. Within this context it is intriguing to note that antiretroviral drugs (HAART) have ameliorated symptoms in RA (57) and further work is needed to comprehensively explore the putative pathogenic involvement of EREs in RA. This will allow greater understanding of RA

pathophysiology and potentially provide new targets for disease treatment or even disease prevention.

Competing interests

JDI disclosures speaker/consulting fees from AbbVie, AstraZeneca, Galapagos and Participation on a Data Safety Monitoring Board or Advisory Board for Eli Lilly. AGP discloses research funding from GSK, Pfizer, Gilead, and consulting fees from Inflection Biosciences. FAHC discloses speaker fees from AstraZeneca. The remaining authors have no competing interests.

Contributors

FAHC, RS and JDI designed the study. FAHC, GVP, BM, VB and DD participated in data and sample collection. FAHC, RS, NN, AGP, FZ, JC, CMUH and AEA assisted with data analysis and interpretation. FAHC wrote the first draft, and all authors approved the final manuscript. FAHC is guarantor of this study.

Acknowledgements

Newcastle researchers received infrastructural support via the Research into Inflammatory Arthritis Centre Versus Arthritis (RACE) (grant number 22072); the National Institute for Health and Care Research (NIHR) Newcastle Biomedical Research Centre for Ageing and LongTerm Conditions. The authors wish to thank Professors Stefan Siebert and Iain McInnes (University of Glasgow, UK) and Drs. Shaun Flint and Katherine Nevin, GSK) and Prof Soumya Raychaudhuri (Harvard Medical School, USA), for their contributions.

Funding

This work was funded The Medical Research Council; Academy of Medical Sciences; JGW Patterson Foundation and British Society of Rheumatology. Experimental work at Newcastle University was additionally supported by the Medical Research Council in collaboration with GSK (MR/S50239X/1).

Views expressed are the authors' and not necessarily those of the National Health Service, the National Institute of Health and Care Research or the Department of Health.

Ethics statements

For the early disease data all patients provided written, informed consent to participate in the study, which was approved by the Northeast – Newcastle and North Tyneside 2 Research Ethics Committee (12/NE/0251). For established RA and OA data consent was obtained as outlined in (35).

Data availability statement

The data are available for the purposes of academic research on reasonable request to the corresponding author.

Patient and public involvement

Patients and the public were not formally involved in the design, conduct or reporting of this research.

Key Messages:

WHAT IS ALREADY KNOWN ON THIS TOPIC

- Type 1 Interferons (IFN-I) are of increasing interest in autoimmunity and, in some diseases, endogenous retroelements have been implicated in IFN-I generation.
- What drives IFN-I production in early rheumatoid arthritis (eRA), and whether endogenous retroelements are involved, is unclear.

WHAT THIS STUDY ADDS

- Retroelements are associated with increased IFN-I protein and transcript levels in eRA blood and synovial tissue. They are also strongly associated with ACPA titres and preferentially increased in eRA naïve B cells.

HOW MIGHT THIS STUDY AFFECT RESEARCH, PRACTICE OR POLICY

- This work supports retroelements as a potential contributor to eRA pathophysiology and may provide a new target for innovative therapeutic strategies.

Cohort	Whole Blood	Circulating lymphocyte subsets	Circulating B cell subsets		Bulk synovial tissue
	eRA	eRA	eRA	PsA	eRA
N	56	8	4	4	22
Age, median [range]	58 (30-87)	56 (49-64)	62 (63-78)	62 (60-80)	63 (41-78)
Sex, ratio M:F	1:1.8	3:1	1:1	1:1	1:1
Seropositive (either anti-CCP or RF)	43 (77%)	8 (100%)	4 (100%)	0	14 (64%)
CRP median [range]	8 [4-114]	7 [4-56]	9 (4-127)	7 (4-167)	22 (4-62)

DAS-28-ESR,	4.3	3.71	4.47	n/a	4.74
median [range]	(1.3-7.6)	(1.63-6.18)	(1.33 – 8.53)		(2.47 – 7)

Table 1: Patient and controls demographic data. Anti CCP, anti-citrullinated protein/peptide antibody; CRP, C reactive protein; DAS-28, disease activity score; eRA, early rheumatoid arthritis; ESR, erythrocyte sedimentation rate; F, female; M, male; n/a, not applicable; RF, rheumatoid factor; PsA, psoriatic arthritis

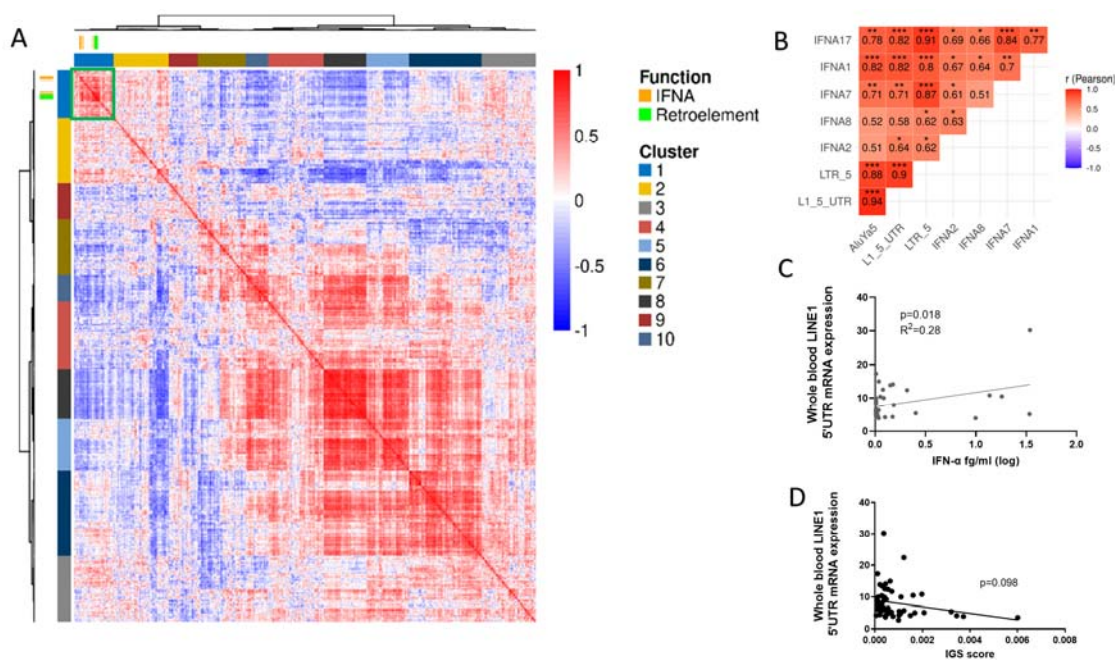


Figure 1

(A) Hierarchical clustering of early RA bulk synovial tissue gene expression correlations. Rows and columns depict genes, and the colour bar represents the Pearson's coefficient (r) of their pairwise gene expression correlation. Dendrograms show hierarchical clustering of the genes by their

expression correlation patterns. IFNA and EREs are highlighted by individual gene markers and the locations of their correlations by the green box. **(B)** Heatmap of correlation profiles between early RA bulk synovial IFN transcript and ERE classes. Significant (adjusted p value <0.05) correlations are highlighted, *p<0.05, ** p<0.01, ***p<0.001. **(C)** Whole blood LINE-1 5'UTR (L1-5'UTR) expression was analysed in early RA patients and shown in arbitrary units in relation to expression in HEK293T. Linear regression of early RA whole blood (L1-5'UTR) and circulating IFN- α protein level, n= 42 and **(D)** whole blood IGS, n=56 is shown.

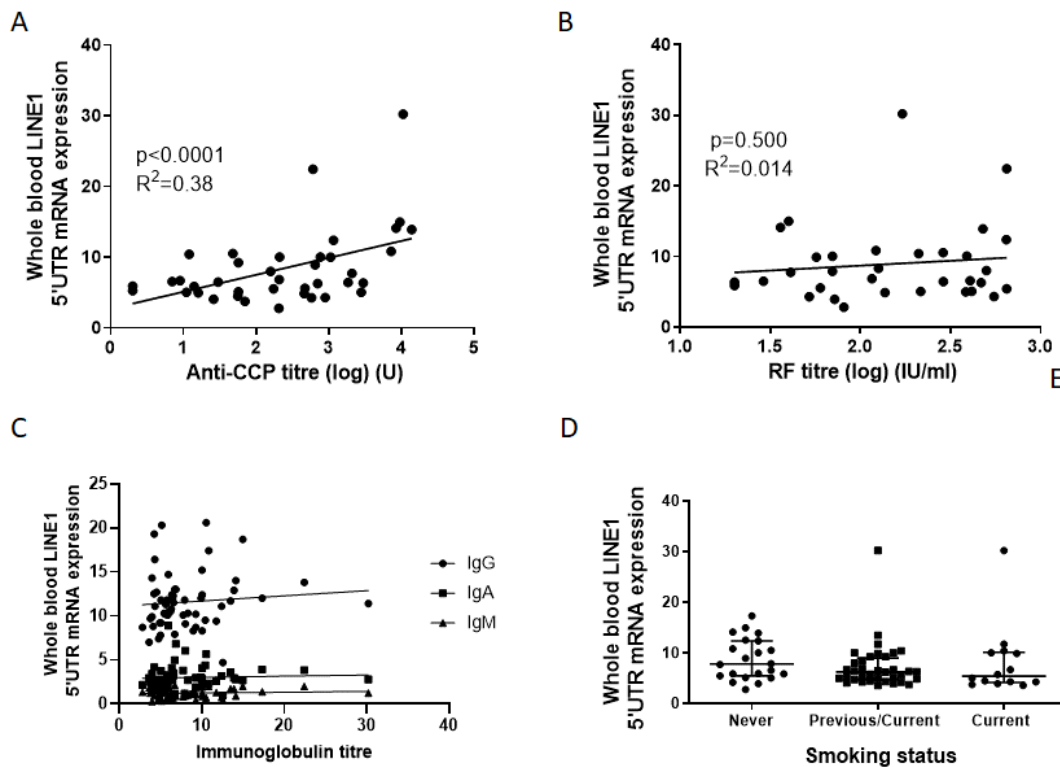


Figure 2

Whole blood LINE-1 5'UTR (L1-5'UTR) expression was analysed in early RA patients ($n=56$) and is shown in arbitrary units in relation to expression in HEK293T cells. **(A-B)** Linear regression between early RA patient ($n=39$) anti-CCP titres or RF titres ($n=34$) and whole blood L1-5'UTR expression **(C)** Linear regression between L1-5'UTR expression and circulating immunoglobulins (IgA, IgM and IgG) in early RA patients ($n=56$), $p > 0.05$ for all. **(D)** Comparison of L1-5'UTR expression between early RA patients based on smoking status, never, previous/current and current.

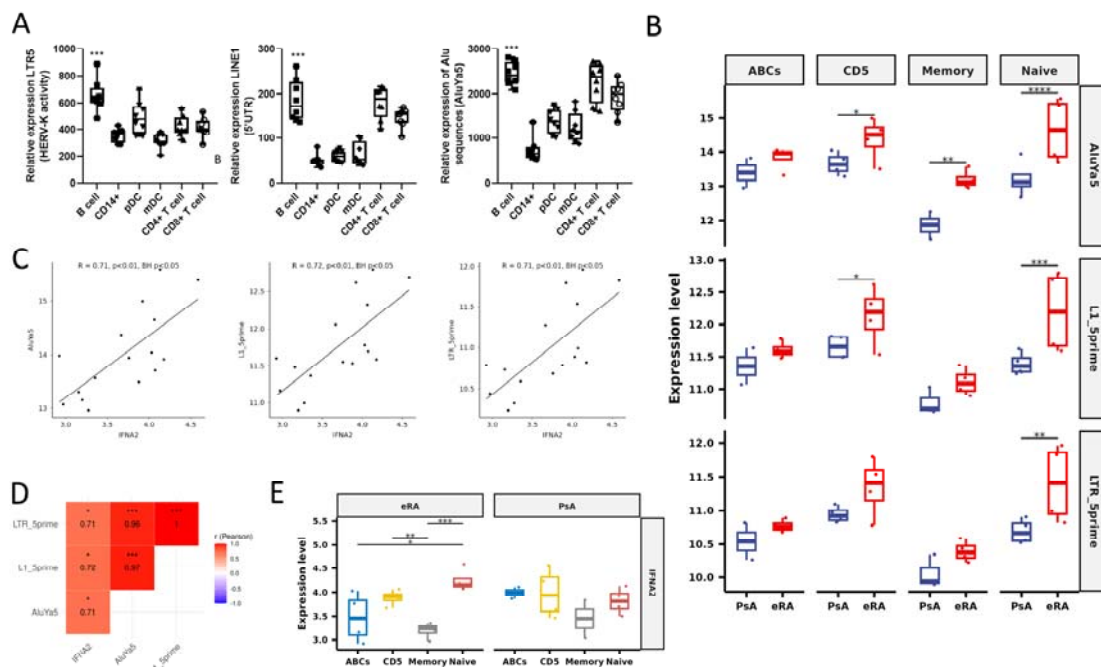


Figure 3

(A) Circulating lymphocyte (CD19⁺ B cells, CD14⁺ monocytes [CD14], plasmacytoid dendritic cells [pDCs], conventional CD1c⁺ DCs [mDCs], CD4⁺ T cells [CD4] and CD8⁺ T cells [CD8]) retroelement (ERE) expression (LTR5, LINE1 [L1-5'UTR], AluYa5) in early RA (eRA, n=8). Data are presented as box and whisker plots, in which the horizontal line represent the median value, the box represents upper and lower quartiles, and the whiskers represent range. Kruskal-Wallis test. (B) Expression of all retroelement classes in B cell subsets, age associated B-cells (ABCs, CD19⁺CD11c⁺CD21⁻), CD5⁺ B cells (CD19⁺CD5⁺), memory B cells (CD19⁺IgD⁻CD27⁺) and naive B cells (CD19⁺IgD⁺CD27⁻) from early RA patients (eRA) and early disease controls (early psoriatic arthritis, PsA), Wald test. (C) Pearson correlation coefficient of *IFNA2* and SINE (AluYa5), LINE1 (L1_5prime) and LTR5 (LTR_5prime) expression from eRA B cells, $p < 0.01$, BH corrected (D) Heatmap of correlation profiles between *IFN* transcript and retroelement classes in pooled eRA B cell subsets. Significant (adjusted p value < 0.05) correlations are highlighted (E) Comparison of *IFNA2* expression across B cell subsets in eRA and early psoriatic arthritis (PsA), paired T tests. * $p < 0.05$, ** $p < 0.01$, *** $p < 0.001$.

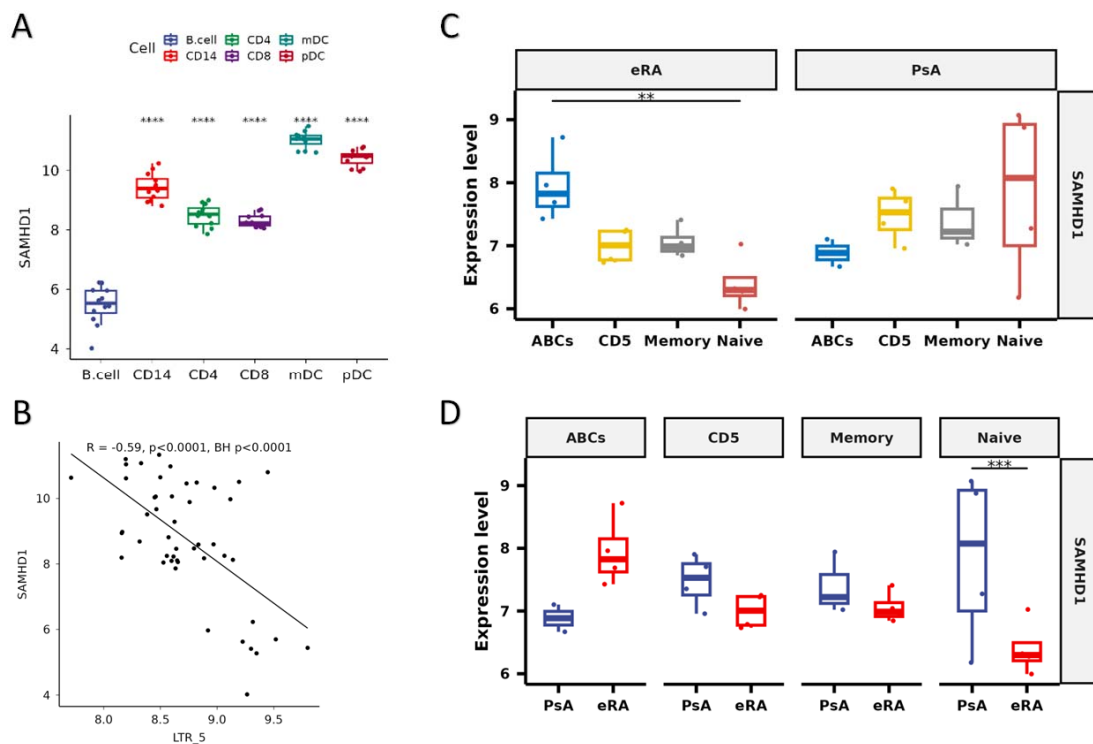


Figure 4.

(A) Expression of *SAMHD1* as determined by Nanostring Technology in peripheral blood lymphocyte subsets (CD19⁺ B cells, CD14⁺ monocytes [CD14], CD4⁺ T cells [CD4], CD8⁺ T cells [CD8], conventional CD1c⁺ DCs [mDCs] and plasmacytoid dendritic cells [pDCs]) from early RA patients (n=8), B cells used as a reference in pairwise paired t tests. **(B)** Pearson's correlation coefficient of *SAMHD1* and LTR5 in these same circulating lymphocytes pooled, BH corrected $p < 0.0001$. **(C)** *SAMHD1* expression, determined by Nanostring Technologies, was examined in age associated B-cells (ABCs, CD19⁺CD11c⁺CD21⁺), CD5⁺ B cells (CD19⁺CD5⁺) memory B cells (CD19⁺IgD⁻CD27⁺), and naïve B cells (CD19⁺IgD⁺CD27⁻) from early RA patients (rRA) and early psoriatic arthritis patients (PsA). Differences in *SAMHD1* expression was examined within disease cohort and **(D)** between disease cohorts. Wald test with adjusted and raw P values shown for 3C and 3D respectively. *** $p < 0.001$

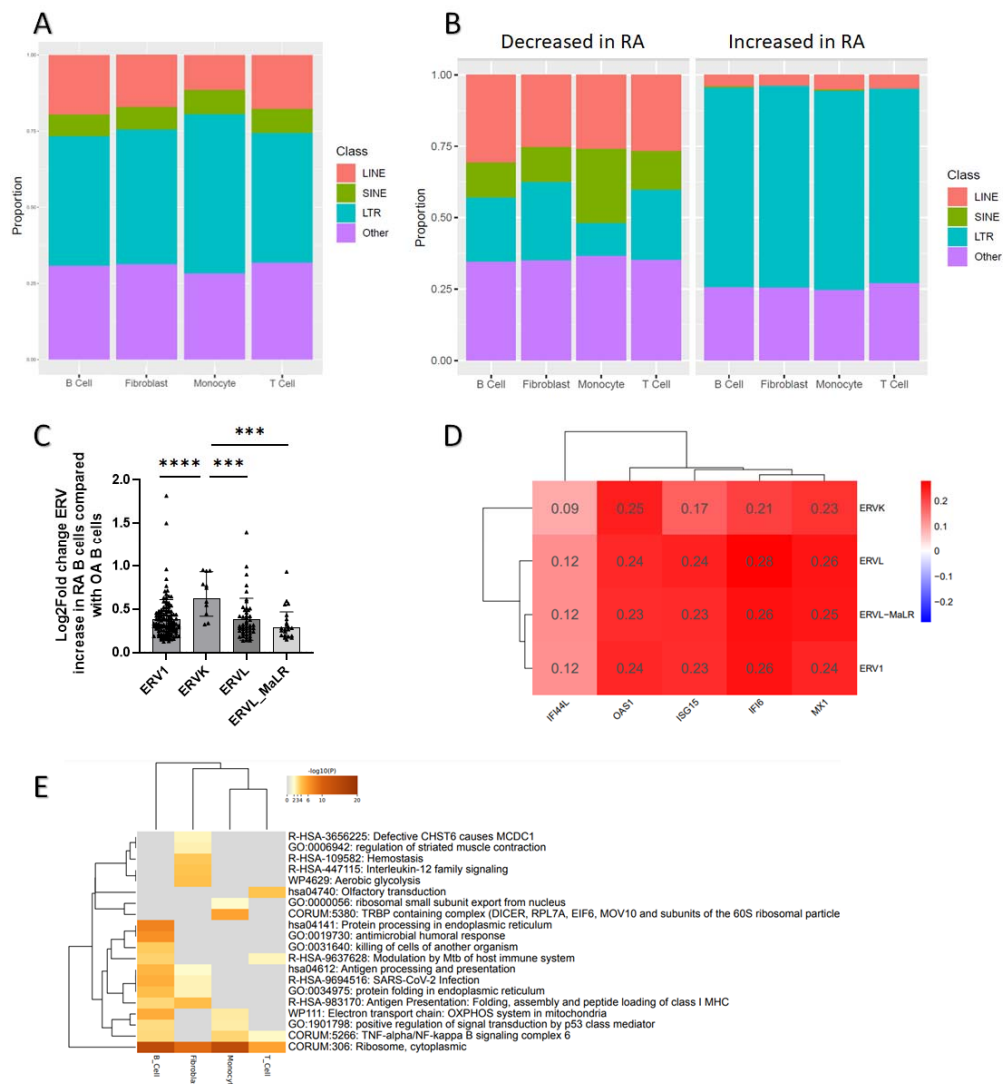


Figure 5

RepEnrich was applied to synovial single cell RNA-sequencing (scseq) data from established RA and non-RA controls (OA) and repeat element enrichment/endogenous retroelements (ERE) were identified. Cellular clusters included monocytes, fibroblasts, T cells and B cells. **(A)** The proportion of scseq repeat element/ ERE expression, grouped by ERE class, in each cell subset in established RA synovial tissue **(B)** Proportion of individual EREs, grouped by class, with either increased or reduced expression in RA versus OA **(C)** The LTR class is divided into ERV1, ERVK, ERV, ERV_MaLR families, with individual ERE expression counts within each family. Depiction of increased differential expression (Log₂FoldChange) in RA compared with OA of each individual ERE count within each ERV family. The relative increased expression (Log₂FoldChange) in RA is further compared between the individual ERV families, Kruskal-Wallis ($p < 0.0001$) and Mann-Whitney U tests **(D)** Hierarchical clustering of correlations between gene expression of interferon response genes and repeat element enrichment counts in RA B cells. Pearson's correlation co-efficients depicted. All correlations were significant, $p < 0.001$. **(E)** MetaScape pathway analysis of all genes with a correlation of ≥ 0.4 with LTR repeat elements in each of the individual cell subsets. Top 20 pathways depicted. **** $p < 0.0001$ *** $p < 0.005$

References

1. Walter MR. The Role of Structure in the Biology of Interferon Signaling. *Front Immunol.* 2020;11:606489.
2. Fernandez-Ruiz R, Niewold TB. Type I Interferons in Autoimmunity. *J Invest Dermatol.* 2022;142(3 Pt B):793-803.
3. Kiefer K, Oropallo MA, Cancro MP, Marshak-Rothstein A. Role of type I interferons in the activation of autoreactive B cells. *Immunol Cell Biol.* 2012;90(5):498-504.
4. Cooles FAH, Anderson AE, Drayton T, Harry RA, Diboll J, Munro L, et al. Immune reconstitution 20 years after treatment with alemtuzumab in a rheumatoid arthritis cohort: implications for lymphocyte depleting therapies. *Arthritis Res Ther.* 2016;18(1):302.
5. Volkman HE, Stetson DB. The enemy within: endogenous retroelements and autoimmune disease. *Nat Immunol.* 2014;15(5):415-22.
6. Crow MK. Long interspersed nuclear elements (LINE-1): potential triggers of systemic autoimmune disease. *Autoimmunity.* 2010;43(1):7-16.
7. Cooles FAH, Tarn J, Lendrem DW, Naamane N, Lin CM, Millar B, et al. Interferon-alpha-mediated therapeutic resistance in early rheumatoid arthritis implicates epigenetic reprogramming. *Ann Rheum Dis.* 2022;81(9):1214-23.
8. Cooles FAH, Anderson AE, Lendrem DW, Norris J, Pratt AG, Hilkens CMU, et al. The interferon gene signature is increased in patients with early treatment-naive rheumatoid arthritis and predicts a poorer response to initial therapy. *J Allergy Clin Immunol.* 2018;141(1):445-8 e4.
9. Lubbers J, Brink M, van de Stadt LA, Vosslamber S, Wesseling JG, van Schaardenburg D, et al. The type I IFN signature as a biomarker of preclinical rheumatoid arthritis. *Ann Rheum Dis.* 2013;72(5):776-80.
10. van Baarsen LG, Bos WH, Rustenburg F, van der Pouw Kraan TC, Wolbink GJ, Dijkmans BA, et al. Gene expression profiling in autoantibody-positive patients with arthralgia predicts development of arthritis. *Arthritis Rheum.* 2010;62(3):694-704.
11. Macias-Segura N, Castaneda-Delgado JE, Bastian Y, Santiago-Algarra D, Castillo-Ortiz JD, Aleman-Navarro AL, et al. Transcriptional signature associated with early rheumatoid arthritis and healthy individuals at high risk to develop the disease. *PLoS One.* 2018;13(3):e0194205.
12. Brink M, Lundquist A, Alexeyenko A, Lejon K, Rantapaa-Dahlqvist S. Protein profiling and network enrichment analysis in individuals before and after the onset of rheumatoid arthritis. *Arthritis Res Ther.* 2019;21(1):288.
13. Plant D, Maciejewski M, Smith S, Nair N, Maximising Therapeutic Utility in Rheumatoid Arthritis Consortium tRSG, Hyrich K, et al. Profiling of Gene Expression Biomarkers as a Classifier of Methotrexate Nonresponse in Patients With Rheumatoid Arthritis. *Arthritis Rheumatol.* 2019;71(5):678-84.
14. Encode P, Consortium. An integrated encyclopedia of DNA elements in the human genome. *Nature.* 2012;489(7414):57-74.
15. McClintock B. Controlling elements and the gene. *Cold Spring Harb Symp Quant Biol.* 1956;21:197-216.
16. Richardson SR, Doucet AJ, Kopera HC, Moldovan JB, Garcia-Perez JL, Moran JV. The Influence of LINE-1 and SINE Retrotransposons on Mammalian Genomes. *Microbiol Spectr.* 2015;3(2):Mdna3-0061-2014.
17. De Cecco M, Ito T, Petrashen AP, Elias AE, Skvir NJ, Criscione SW, et al. L1 drives IFN in senescent cells and promotes age-associated inflammation. *Nature.* 2019;566(7742):73-8.
18. Mustelin T, Ukadike KC. How Retroviruses and Retrotransposons in Our Genome May Contribute to Autoimmunity in Rheumatological Conditions. *Front Immunol.* 2020;11:593891.
19. Zhao K, Du J, Peng Y, Li P, Wang S, Wang Y, et al. LINE1 contributes to autoimmunity through both RIG-I- and MDA5-mediated RNA sensing pathways. *J Autoimmun.* 2018;90:105-15.
20. Lee-Kirsch MA, Wolf C, Gunther C. Aicardi-Goutieres syndrome: a model disease for systemic autoimmunity. *Clin Exp Immunol.* 2014;175(1):17-24.

21. Mavragani CP, Sagalovskiy I, Guo Q, Nezos A, Kapsogeorgou EK, Lu P, et al. Expression of Long Interspersed Nuclear Element 1 Retroelements and Induction of Type I Interferon in Patients With Systemic Autoimmune Disease. *Arthritis Rheumatol.* 2016;68(11):2686-96.
22. Ali M, Veale DJ, Reece RJ, Quinn M, Henshaw K, Zanders ED, et al. Overexpression of transcripts containing LINE-1 in the synovia of patients with rheumatoid arthritis. *Ann Rheum Dis.* 2003;62(7):663-6.
23. Neidhart M, Rethage J, Kuchen S, Kunzler P, Crowl RM, Billingham ME, et al. Retrotransposable L1 elements expressed in rheumatoid arthritis synovial tissue: association with genomic DNA hypomethylation and influence on gene expression. *Arthritis Rheum.* 2000;43(12):2634-47.
24. Tugnet N, Rylance P, Roden D, Trela M, Nelson P. Human Endogenous Retroviruses (HERVs) and Autoimmune Rheumatic Disease: Is There a Link? *Open Rheumatol J.* 2013;7:13-21.
25. Nakagawa K, Brusic V, McColl G, Harrison LC. Direct evidence for the expression of multiple endogenous retroviruses in the synovial compartment in rheumatoid arthritis. *Arthritis Rheum.* 1997;40(4):627-38.
26. Nelson PN, Roden D, Nevill A, Freimanis GL, Trela M, Ejtehadi HD, et al. Rheumatoid arthritis is associated with IgG antibodies to human endogenous retrovirus gag matrix: a potential pathogenic mechanism of disease? *J Rheumatol.* 2014;41(10):1952-60.
27. Freimanis G, Hooley P, Ejtehadi HD, Ali HA, Veitch A, Rylance PB, et al. A role for human endogenous retrovirus-K (HML-2) in rheumatoid arthritis: investigating mechanisms of pathogenesis. *Clin Exp Immunol.* 2010;160(3):340-7.
28. Meyer S, Woodward M, Hertel C, Vlaicu P, Haque Y, Karner J, et al. AIRE-Deficient Patients Harbor Unique High-Affinity Disease-Ameliorating Autoantibodies. *Cell.* 2016;166(3):582-95.
29. Cooles FAH, Anderson AE, Skelton A, Pratt AG, Kurowska-Stolarska MS, McInnes I, et al. Phenotypic and Transcriptomic Analysis of Peripheral Blood Plasmacytoid and Conventional Dendritic Cells in Early Drug Naive Rheumatoid Arthritis. *Front Immunol.* 2018;9:755.
30. Vidal-Pedrola G, Naamane N, Cameron JA, Pratt AG, Mellor AL, Isaacs JD, et al. Characterization of age-associated B cells in early drug-naive rheumatoid arthritis patients. *Immunology.* 2022.
31. Shukla R, Upton KR, Munoz-Lopez M, Gerhardt DJ, Fisher ME, Nguyen T, et al. Endogenous retrotransposition activates oncogenic pathways in hepatocellular carcinoma. *Cell.* 2013;153(1):101-11.
32. Kelly S, Humby F, Filer A, Ng N, Di Cicco M, Hands RE, et al. Ultrasound-guided synovial biopsy: a safe, well-tolerated and reliable technique for obtaining high-quality synovial tissue from both large and small joints in early arthritis patients. *Ann Rheum Dis.* 2015;74(3):611-7.
33. Maney NJ, Lemos H, Barron-Millar B, Carey C, Herron I, Anderson AE, et al. Pim Kinases as Therapeutic Targets in Early Rheumatoid Arthritis. *Arthritis Rheumatol.* 2021;73(10):1820-30.
34. Criscione SW, Zhang Y, Thompson W, Sedivy JM, Neretti N. Transcriptional landscape of repetitive elements in normal and cancer human cells. *BMC Genomics.* 2014;15:583.
35. Zhang F, Wei K, Slowikowski K, Fonseka CY, Rao DA, Kelly S, et al. Defining inflammatory cell states in rheumatoid arthritis joint synovial tissues by integrating single-cell transcriptomics and mass cytometry. *Nat Immunol.* 2019;20(7):928-42.
36. Kawano H, Saeki H, Kitao H, Tsuda Y, Otsu H, Ando K, et al. Chromosomal Instability Associated with Global DNA Hypomethylation is Associated with the Initiation and Progression of Esophageal Squamous Cell Carcinoma. *Annals of Surgical Oncology.* 2014;21:S696-S702.
37. Linn-Rasker SP, van der Helm-van Mil AHM, van Gaalen FA, Kloppenburg M, de Vries RRP, le Cessie S, et al. Smoking is a risk factor for anti-CCP antibodies only in rheumatoid arthritis patients who carry HLA-DRB1 shared epitope alleles. *Annals of the rheumatic diseases.* 2006;65(3):366-71.
38. Gramberg T, Kahle T, Bloch N, Wittmann S, Mullers E, Daddacha W, et al. Restriction of diverse retroviruses by SAMHD1. *Retrovirology.* 2013;10:26.

39. Grow EJ, Flynn RA, Chavez SL, Bayless NL, Wossidlo M, Wesche DJ, et al. Intrinsic retroviral reactivation in human preimplantation embryos and pluripotent cells. *Nature*. 2015;522(7555):221-5.
40. Mao J, Zhang Q, Cong YS. Human endogenous retroviruses in development and disease. *Comput Struct Biotechnol J*. 2021;19:5978-86.
41. Reynier F, Verjat T, Turrel F, Imbert PE, Marotte H, Mougin B, et al. Increase in human endogenous retrovirus HERV-K (HML-2) viral load in active rheumatoid arthritis. *Scand J Immunol*. 2009;70(3):295-9.
42. Ehlhardt S, Seifert M, Schneider J, Ojak A, Zang KD, Mehraein Y. Human endogenous retrovirus HERV-K(HML-2) Rec expression and transcriptional activities in normal and rheumatoid arthritis synovia. *J Rheumatol*. 2006;33(1):16-23.
43. Saresella M, Rolland A, Marventano I, Cavarretta R, Caputo D, Marche P, et al. Multiple sclerosis-associated retroviral agent (MSRV)-stimulated cytokine production in patients with relapsing-remitting multiple sclerosis. *Mult Scler*. 2009;15(4):443-7.
44. Bonelli M, Dalwigk K, Platzer A, Olmos Calvo I, Hayer S, Niederreiter B, et al. IRF1 is critical for the TNF-driven interferon response in rheumatoid fibroblast-like synoviocytes : JAKinibs suppress the interferon response in RA-FLSs. *Exp Mol Med*. 2019;51(7):1-11.
45. Kuriyama Y, Shimizu A, Kanai S, Oikawa D, Motegi SI, Tokunaga F, et al. Coordination of retrotransposons and type I interferon with distinct interferon pathways in dermatomyositis, systemic lupus erythematosus and autoimmune blistering disease. *Sci Rep*. 2021;11(1):23146.
46. Zhao X, Zhao Y, Du J, Gao P, Zhao K. The Interplay Among HIV, LINE-1, and the Interferon Signaling System. *Front Immunol*. 2021;12:732775.
47. Han L, Tu S, Shen P, Yan J, Huang Y, Ba X, et al. A comprehensive transcriptomic analysis of alternate interferon signaling pathways in peripheral blood mononuclear cells in rheumatoid arthritis. *Aging (Albany NY)*. 2021;13(16):20511-33.
48. Akita K, Yasaka K, Shirai T, Ishii T, Harigae H, Fujii H. Interferon alpha Enhances B Cell Activation Associated With FOXM1 Induction: Potential Novel Therapeutic Strategy for Targeting the Plasmablasts of Systemic Lupus Erythematosus. *Front Immunol*. 2020;11:498703.
49. Trela M, Nelson PN, Rylance PB. The role of molecular mimicry and other factors in the association of Human Endogenous Retroviruses and autoimmunity. *APMIS*. 2016;124(1-2):88-104.
50. Hung T, Pratt GA, Sundararaman B, Townsend MJ, Chaivorapol C, Bhangale T, et al. The Ro60 autoantigen binds endogenous retroelements and regulates inflammatory gene expression. *Science*. 2015;350(6259):455-9.
51. Wang X, Hefton A, Ni K, Ukadike KC, Bowen MA, Eckert M, et al. Autoantibodies Against Unmodified and Citrullinated Human Endogenous Retrovirus K Envelope Protein in Patients With Rheumatoid Arthritis. *J Rheumatol*. 2022;49(1):26-35.
52. White TE, Brandariz-Nunez A, Martinez-Lopez A, Knowlton C, Lenzi G, Kim B, et al. A SAMHD1 mutation associated with Aicardi-Goutieres syndrome uncouples the ability of SAMHD1 to restrict HIV-1 from its ability to downmodulate type I interferon in humans. *Hum Mutat*. 2017;38(6):658-68.
53. Coggins SA, Mahboubi B, Schinazi RF, Kim B. SAMHD1 Functions and Human Diseases. *Viruses*. 2020;12(4).
54. Thientosapol ES, Bosnjak D, Durack T, Stevanovski I, van Geldermalsen M, Holst J, et al. SAMHD1 enhances immunoglobulin hypermutation by promoting transversion mutation. *Proc Natl Acad Sci U S A*. 2018;115(19):4921-6.
55. Oh C, Ryoo J, Park K, Kim B, Daly MB, Cho D, et al. A central role for PI3K-AKT signaling pathway in linking SAMHD1-deficiency to the type I interferon signature. *Sci Rep*. 2018;8(1):84.
56. Tunbak H, Enriquez-Gasca R, Tie CHC, Gould PA, Mlcochova P, Gupta RK, et al. The HUSH complex is a gatekeeper of type I interferon through epigenetic regulation of LINE-1s. *Nat Commun*. 2020;11(1):5387.

57. Chen JW, Deng GS, Zhang WS, Zhang MY, Guan T, Xu Q. Case report: Safety and efficacy of adalimumab in treating difficult-to-treat rheumatoid arthritis in a human immunodeficiency virus-positive patient, one year follow-up. *Front Immunol.* 2022;13:942642.