

# Temporal changes in SARS-CoV-2 clearance kinetics and the optimal design of phase 2 antiviral studies

Phrutsamon Wongnak<sup>1</sup>, William HK Schilling<sup>1,2</sup>, Podjanee Jittamala<sup>1,3</sup>, Simon Boyd<sup>1,2</sup>, Viravarn Luvira<sup>4</sup>, Tanaya Siripoon<sup>4</sup>, Thundon Ngamprasertchai<sup>4</sup>, Elizabeth M Batty<sup>1,2</sup>, Shivani Singh<sup>1,2</sup>, Jindarat Kouhathong<sup>1</sup>, Watcharee Pagornrat<sup>1</sup>, Patpannee Khanthagan<sup>1</sup>, Borimas Hanboonkunupakarn<sup>1,4</sup>, Kittiyod Poovorawan<sup>1,4</sup>, Mayfong Mayxay<sup>2,5,6</sup>, Kesinee Chotivanich<sup>1,4</sup>, Mallika Imwong<sup>1,7</sup>, Sasithon Pukrittayakamee<sup>1,4</sup>, Elizabeth A Ashley<sup>2,5</sup>, Arjen M Dondorp<sup>1,2</sup>, Nicholas PJ Day<sup>1,2</sup>, Mauro M Teixeira<sup>8</sup>, Watcharapong Piyaphanee<sup>4</sup>, Weerapong Phumratanaprapin<sup>4</sup>, Nicholas J White<sup>1,2,†</sup>, James A Watson<sup>2,9,†</sup>, on behalf of the PLATCOV Collaborative Group

\*For correspondence: [jwatowatson@gmail.com](mailto:jwatowatson@gmail.com); [nickw@tropmedres.ac](mailto:nickw@tropmedres.ac)

†Equal contribution

<sup>1</sup> Mahidol Oxford Tropical Medicine Research Unit, Faculty of Tropical Medicine, Mahidol University, Bangkok, 10400, Thailand;

<sup>2</sup> Centre for Tropical Medicine and Global Health, Nuffield Department of Medicine, University of Oxford, New Richards Building, Old Road Campus, Roosevelt Drive, Oxford, OX3 7LG, UK;

<sup>3</sup> Department of Tropical Hygiene, Faculty of Tropical Medicine, Mahidol University, Bangkok, Thailand;

<sup>4</sup> Department of Clinical Tropical Medicine, Faculty of Tropical Medicine, Mahidol University, Bangkok, Thailand;

<sup>5</sup> Lao-Oxford-Mahosot Hospital-Wellcome Trust Research Unit, Microbiology Laboratory, Mahosot Hospital, Vientiane, Lao P.D.R.;

<sup>6</sup> Institute for Research and Education Development, University of Health Sciences, Vientiane, Lao P.D.R.;

<sup>7</sup> Department of Molecular Tropical Medicine and Genetics, Faculty of Tropical Medicine, Mahidol University, Bangkok, Thailand.;

<sup>8</sup> Clinical Research Unit, Center for Advanced and Innovative Therapies, Universidade Federal de Minas Gerais, Brazil;

<sup>9</sup> Oxford University Clinical Research Unit, Hospital for Tropical Diseases, Ho Chi Minh City, Vietnam.

**NOTE: This preprint reports new research that has not been certified by peer review and should not be used to guide clinical practice.**

## Abstract

**Background** Effective antiviral drugs prevent hospitalisation and death in COVID-19. Antiviral efficacy can be assessed efficiently in-vivo by measuring rates of SARS-CoV-2 clearance estimated from serial viral densities measured in nasopharyngeal or oropharyngeal swab eluates. The changing epidemiology of SARS-CoV-2 infection has substantially affected viral clearance kinetics and thus the optimal design and interpretation of antiviral pharmacometric evaluations.

**Methods** Serial viral density data were analysed from patients enrolled in a large multicentre randomised adaptive pharmacodynamic platform trial (PLATCOV) comparing antiviral interventions for SARS-CoV-2. Viral clearance rates over one week were estimated and bootstrap re-sampling was used to assess the optimal duration of follow-up for pharmacometric assessment, where optimal is defined as maximising the expected z-score.

**Results** Between 29 September 2021 and 20 October 2023, 1264 patients were randomised. Unblinded data were available from 800 patients (16,818 oropharyngeal viral qPCR measurements). SARS-CoV-2 viral clearance was biphasic (bi-exponential). The first phase ( $\alpha$ ) was accelerated by effective interventions. For all the effective interventions studied, maximum discriminative power (maximum expected z-score) was obtained when evaluating serial data from the first 5 days after enrolment. Over the two year period studied, median viral clearance half-lives estimated over 7 days have shortened from 16.8 hours in September 2021 to 9.3 hours in October 2023 in patients receiving no antiviral drugs, equivalent to a relative reduction of 44% [95% credible interval (CrI): 17 to 67%]. A parallel trend was observed in treated patients. In the ritonavir-boosted nirmatrelvir arm the median clearance half-life declined from 6.6 hours in June 2022 to 4.8 hours in October 2023, a relative reduction of 26% [95%CrI: -4 to 42%].

**Conclusions** SARS-CoV-2 viral clearance kinetics in symptomatic vaccinated individuals have accelerated substantially over the past two years. Antiviral efficacy in COVID-19 can now be assessed efficiently in-vivo using serial qPCRs from duplicate oropharyngeal swab eluates taken daily for 5 days after drug administration.

**Funding** Wellcome Trust Grant ref: 223195/Z/21/Z through the COVID-19 Therapeutics Accelerator.

# Background

Effective SARS-CoV-2 antivirals taken early in the course of COVID-19 illness accelerate viral clearance, hasten symptom resolution, reduce transmission, and lower the probability of progression to severe disease [1–4]. Several small molecule drugs and monoclonal antibodies have proven antiviral efficacy in COVID-19, although monoclonal antibodies are no longer used widely as immune evasion resulting from viral evolution has reduced or abrogated their antiviral effects. Currently the most effective approved small molecule antiviral drug is ritonavir-boosted nirmatrelvir, a main (3C-like) protease inhibitor [5]. Nirmatrelvir reduces progression to severe disease in an unvaccinated high-risk population by around 90% [3]. But the combination drug is expensive, ritonavir is contraindicated in many individuals because of drug-drug interactions, and ritonavir-boosted nirmatrelvir frequently results in dysgeusia [3]. The development of better tolerated drugs (for example ensitrelvir, also a main protease inhibitor [6]) which could be administered more widely would be of considerable public health value, particularly if they were affordable. To guide policies and practices the antiviral activities of new drugs need to be evaluated in comparison with current treatments.

The natural history of SARS-CoV-2 infection has changed markedly over the past four years since the beginning of the pandemic. Serious clinical outcomes, notably life-threatening inflammatory pneumonitis, are now very rare. As a result it has become very difficult to demonstrate clinical efficacy for new antiviral drugs because the required sample sizes have become prohibitively large. This was illustrated in the very large PANORAMIC trial of molnupiravir in the UK where only 203 primary events were observed in >25,000 randomised at risk patients [7]. An alternative approach is to use rates of in-vivo viral clearance to characterise and compare antiviral efficacies [8]. This is relatively straightforward and requires orders of magnitude fewer patients [9]. We have demonstrated previously the utility of this approach in identifying ineffective drugs, and assessing and comparing those which are clinically effective [5, 9–11].

The PLATCOV trial is an ongoing multicentre phase 2 adaptive, open label, randomised, pharmacometric platform trial in symptomatic low risk adults with COVID-19 (NCT05041907) [9]. PLATCOV screens candidate antiviral drugs efficiently and compares their in-vivo antiviral effects. Since September 2021 over 1,300 patients have been randomised across six sites in four countries, reporting results for ivermectin [9], remdesivir [12], the monoclonal antibody cocktail casirivimab/imdevimab [10], favipiravir [11], and molnupiravir versus ritonavir boosted nirmatrelvir [5]. In this paper we present an analysis of viral clearance in all patients with unblinded data in the PLATCOV study in order to characterise temporal changes in viral kinetics and reassess the optimal approach for characterising and comparing antiviral effects in-vivo.

## Methods

### The PLATCOV trial

PLATCOV is an ongoing, open-label, multicentre, phase 2, randomised, controlled, adaptive pharmacometric platform trial in Thailand, Brazil, Pakistan, and Laos. The trial provides a standardised quantitative comparative method for in-vivo assessment of potential antiviral treatments in adults at low risk with early symptomatic COVID-19. The primary endpoint is the rate of viral clearance estimated under a linear model fitted to the log viral load (measured by qPCR in daily duplicate oropharyngeal viral swab eluates) data currently sampled on Day 0 and over 7 days of follow-up (8 days in total), denoted  $\alpha_{0-7}$ . All patients receive standard symptomatic treatment.

PLATCOV is coordinated and monitored by the Mahidol Oxford Tropical Medicine Research Unit (MORU) in Bangkok. The trial was overseen by a trial steering committee and was conducted according to Good Clinical Practice principles. PLATCOV is registered at ClinicalTrials.gov, NCT05041907.

### Ethics statement

The trial was approved by the Oxford University Tropical Research Ethics Committee (Oxford, UK) and ethics committees in each country. The results were reviewed regularly by a data and safety monitoring board. In Thailand the trial was approved by the Faculty of Tropical Medicine Ethics Committee, Mahidol University, (reference TMEC 21-058); in Brazil by the Research Ethics

Committee of the Universidade Federal de Minas Gerais (COEP-UFMG, Minas Gerais, Brazil, COEP-UFMG) and National Research Ethics Commission- (CONEP, Brazil, COEP-UFMG and CONEP Ref: CAAE:51593421.1.0000.5149); in Laos by the National Ethics Committee for Health Research (NECHR, Lao People's Democratic Republic, Submission ID 2022.48) and the Food & Drugs Department (FDD, Lao People's Democratic Republic, 13066/FDD\_12Dec2022); in Pakistan by the National Bioethics Committee (NBC No.4-87/COVID-111/22/842) the Ethics Review Committee (ERC 2022-7496-21924) and the Drug Regulatory Authority (DRAP Ref: No.03-18/2022-CT (PS)).

## Participants

Eligible participants were previously healthy adults aged 18–50 years who gave fully informed consent for full participation in the study. The entry criteria were: (i) SARS-CoV-2 positive as defined either as a nasal lateral flow antigen test that became positive within 2 minutes (STANDARD Q COVID-19 Ag Test, SD Biosensor, Suwon-si, South Korea) or a positive PCR test with a cycle threshold value less than 25 (all viral gene targets) within the previous 24 h (both these tests ensure the majority of recruited patients have high viral densities; (ii) reported symptoms of COVID-19 for less than 4 days (<96 h); (iii) oxygen saturation on room air  $\geq 96\%$  measured by pulse oximetry at the time of screening; (iv) unimpeded in activities of daily living; (v) agreed to adhere to all procedures, including availability and contact information for follow-up visits.

Exclusion criteria included taking any concomitant medications or drugs, chronic illness or condition requiring long-term treatment or other clinically significant comorbidity, laboratory abnormalities at screening (haemoglobin <8 g/dL, platelet count <50 000/ $\mu$ L, abnormal liver function tests, and estimated glomerular filtration rate <70 mL/min per 1.73 m<sup>2</sup>), pregnancy (a urinary pregnancy test was performed in females), actively trying to become pregnant, lactation, contraindication or known hypersensitivity to any of the proposed therapeutics, currently participating in a COVID-19 therapeutic or vaccine trial, or evidence of pneumonia (although imaging was not required). After a detailed explanation of study procedures and requirements all patients provided fully informed written consent.

Block randomisation was performed for each site via a centralised web-based application. At enrolment, after obtaining fully informed consent and entering the patient details, the app provided the study drug allocation. The no study drug group comprised a minimum proportion of 20% of patients at all times, with uniform randomisation ratios applied across the active treatment groups. The laboratory team were masked to treatment allocation and the clinical investigators were masked to the virology results until the study group was terminated. Apart from the trial statisticians (JAW and PW), the clinical investigators were all masked to the quantitative PCR (qPCR) results.

## Procedures

All treatments were directly observed. Oropharyngeal swabs were taken as follows. A flocked swab (Thermo Fisher MicroTest [Thermo Fisher, Waltham, MA, USA] and later COPAN FLOQSwabs [COPAN Diagnostics, Murrieta, CA, USA]) was rotated against the tonsil through 360° four times and placed in Thermo Fisher M4RT (Thermo Fisher, Waltham, MA, USA) viral transport medium (3 mL). Swabs were transferred at 4–8°C, aliquoted, and then frozen at –80°C within 48 h.

On day 0, after randomisation four separate swabs (two swabs from each tonsil) were taken. Separate swabs from each tonsil were then taken once daily from day 1 to day 7, on day 10, and on day 14. Each swab was processed and tested separately. Vital signs were recorded three times daily by the patient (initial vital signs on the first day were recorded by the study team), and symptoms and any adverse effects were recorded daily. The TaqCheck SARS-CoV-2 Fast PCR Assay (Applied Biosystems, Thermo Fisher Scientific, Waltham, MA, USA) quantitated viral density (RNA copies per mL). This multiplexed real-time PCR method detects the SARS-CoV-2 N and S genes, and human RNase P gene in a single reaction. Whole-genome sequencing was performed to identify viral variants and allocate genotypes.

## Drugs evaluated

The drugs or monoclonal antibodies evaluated were ivermectin (until 11<sup>th</sup> April 2022); remdesivir (until 10<sup>th</sup> June 2022); casirivimab/imdevimab (Thailand only, until 20<sup>th</sup> October 2022); favipiravir

(until 30<sup>th</sup> October 2022); molnupiravir (until 22<sup>nd</sup> February 2023); fluoxetine (until 8<sup>th</sup> May 2023, data not included in this analysis); tixagevimab/cilgavimab (until 4<sup>th</sup> July 2023, data not included in this manuscript); nitazoxanide (Brazil, Laos and Pakistan, from 18<sup>th</sup> January 2022, ongoing); ensitrelvir (Thailand and Laos only, from 17<sup>th</sup> March 2023, ongoing); and ritonavir-boosted nirmatrelvir (from 6<sup>th</sup> June 2022, ongoing as positive control). All treatment doses were either directly observed or video observed.

## Statistical analysis

### Data pre-processing

Oropharyngeal eluate viral densities were quantified by PCR on 96-well plates. Each plate contained 10 or 12 ATCC controls (Manassas, VA, USA; these are heat-inactivated SARS-CoV-2 viruses [VR-1986HK strain 2019-nCoV/USAWA1/2020]) varying from 10 to 10<sup>6</sup> copies per mL. This was a multiplex PCR which also quantifies human RNase P. We first fitted a mixed-effects linear model to all control data from all available plates (using R package *lme4* [13]) with the copies per mL on the log<sub>10</sub> scale. Visual checks were done to make sure that controls on all plates were in a reasonable range. The mixed-effects model was then used to transform the observed CT values for the oropharyngeal eluate into log<sub>10</sub> genomes per mL. A CT value of 40 was considered left-censored and the plate specific censoring value was used in subsequent analyses.

### Baseline viral densities

The baseline viral density was defined as the geometric mean of the oropharyngeal eluate SARS-CoV-2 densities from the four independent swabs taken before randomisation. The temporal trend of baseline viral density was explored using generalised additive models (GAM) with penalised splines, as implemented in the *mgcv* package [14]. As the timing of patient recruitment relative to their onset of symptoms could have also changed over time (and this could affect baseline viral densities), the temporal effect was stratified by the reported number of days since symptom onset.

### Bayesian hierarchical model to estimate average viral clearance rates

The analysis of the serial viral density data used the same analytical model as published previously [5, 9–12]. Patients were included in this analysis if they had been randomised to a currently unblinded treatment arm and had at least 2 days of follow-up (in order to estimate a clearance slope). The main analytical model is a hierarchical Bayesian linear model whereby the log viral densities are modelled as a linear function of time since randomisation, with a random intercept and a random slope for each patient. This hierarchical linear model uses the human RNase P CT value (standardised to have mean zero and standard deviation 1) as an independent additive covariate for each observed log<sub>10</sub> viral density. Additional covariate terms on the slope and intercept are the reported days since symptom onset, study site, age, and number of vaccines received. The treatment effect relative to a reference intervention (e.g. no study drug) is parameterised in two ways: (i) a proportional change; and (ii) an additive change in the mean viral clearance rate (the slope of the viral density decay on the log scale is the rate of clearance). Model comparison between the two parameterisation approaches was done using leave-one-out in the package *loo* [15].

All viral densities below the lower limit of quantification (defined as a CT value of 40) were treated as left-censored (the likelihood is the integral of the likelihood function below the censoring value). The linear model fitted to data between days 0 and  $T_{\max}$  then estimates the average clearance rate of the period up to  $T_{\max}$ . The rate of viral clearance up until  $T_{\max}$  is denoted  $\alpha_{0-T_{\max}}$ .

### Temporal changes in viral clearance dynamics

To assess the temporal changes in viral clearance we added a penalised B-spline of degree 4 to the baseline viral clearance in the reference arm (for most analyses this is the no study drug arm). This is done by having many knots at regular intervals (chosen to be 10 in the main analysis), but with an informative penalisation prior on parameter changes across knots. The penalisation prior governs the smoothness of the spline fit ([https://github.com/milkha/Splines\\_in\\_Stan](https://github.com/milkha/Splines_in_Stan)).

## 155 Evaluation of the optimal design

156 We assessed the optimal follow-up duration by estimating the expected z-score as a function of  
 157 the number of days of follow-up included in the linear model for six separate intervention com-  
 158 parisons (only using concurrently randomised patients): remdesivir versus no study drug; casiriv-  
 159 imab/imdevimab versus no study drug; molnupiravir versus no study drug; ritonavir-boosted nir-  
 160 matrelvir versus no study drug; and ritonavir-boosted nirmarelvir versus molnupiravir. The data  
 161 for ritonavir-boosted nirmatrelvir versus no study drug spanned 16 months with a brief hiatus  
 162 in recruitment in January 2023. We therefore arbitrarily split these data into two separate com-  
 163 parisons, before February 2023 and after February 2023. This allowed assessment of how much  
 164 the temporal changes in viral clearance was driving the observed results. For each of these six  
 165 comparisons, and for each maximum follow-up duration (from day 2 to day 14), we bootstrapped  
 166 the data 50 times (sampling the patients with replacement) and fitted the linear model to estimate  
 167 the treatment effect and standard error (defined by the width of the 95% credible interval around  
 168 the posterior treatment estimate).

## 169 Analysis code

170 All Bayesian models are written in stan and fitted using the *rstan* interface [16]. All analyses were  
 171 done using R programming language version 4.3.2 [17].

## 172 Data Sharing Statement

173 All data and code necessary to reproduce the results in this analysis are openly available at <https://github.com/jwatowatson/Determinants-viral-clearance>  
 174

## 175 Results

### 176 Patient cohort

177 Between the 29<sup>th</sup> September 2021 and 20<sup>th</sup> October 2023, 1262 patients were randomised in the  
 178 PLATCOV trial across six sites in four countries (Thailand, Brazil, Pakistan, and Laos). Patients  
 179 randomised to ensitrelvir, combination treatment of ritonavir-boosted nirmatrelvir and molnupi-  
 180 ravir, and nitazoxanide are not included in this analysis as those comparisons are ongoing and their  
 181 data are still blinded (Figure 1). Patients randomised to fluoxetine and tixagevimab/cilgavimab  
 182 are not included as the primary analysis of their data has not been published yet (the analysis of  
 183 the fluoxetine data are provided in an accompanying manuscript [18]). The analysis population,  
 184 after excluding patients who withdrew consent or who had fewer than 2 days follow-up, consisted  
 185 of 800 patients randomised between seven arms (not all concurrently) (Supplementary Figure S1).  
 186 Nearly all included patients were fully vaccinated before the onset of symptoms (> 95%, Table  
 187 1). The majority (85%) of patients were randomised at one site in Thailand (Hospital for Tropical  
 188 Diseases [HTD], Bangkok). The mean time from symptom onset to enrolment (first swabs on  
 189 Day 0) was 2.1 days and the geometric mean baseline viral density in oropharyngeal eluates was  
 190 approximately 5.5 log<sub>10</sub> genomes per mL.

### 191 Baseline viral densities

192 The baseline viral densities remained high over the two year period (Supplementary Figure S2).  
 193 There were systematic trends over time in the baseline viral densities, associated with different  
 194 SARS-CoV-2 variants. The reported number of days since symptom onset was negatively corre-  
 195 lated with the baseline viral density (correlation coefficient  $\rho = -0.22$  [95% confidence interval (CI):  
 196  $-0.29; -0.16$ ];  $R^2 = 0.05$ ) (Figure 2B). Each reported additional day since symptom onset corre-  
 197 sponded to a 2.2-fold decrease in the baseline viral density. There were small changes in the mean  
 198 reported number of days since symptom onset over time. For example, during the Omicron BA.1  
 199 wave patients were recruited slightly later on average, Figure 2A. In a multivariable spline model  
 200 stratified by the number of reported days since symptom onset, there was evidence of systematic  
 201 temporal changes in baseline viral density over time (i.e. not explained by differences in time  
 202 from symptom onset, Figure 2C). As these are observational data it is not possible to determine  
 203 causality (e.g. whether these differences are due to variant specific mutations in the spike protein)

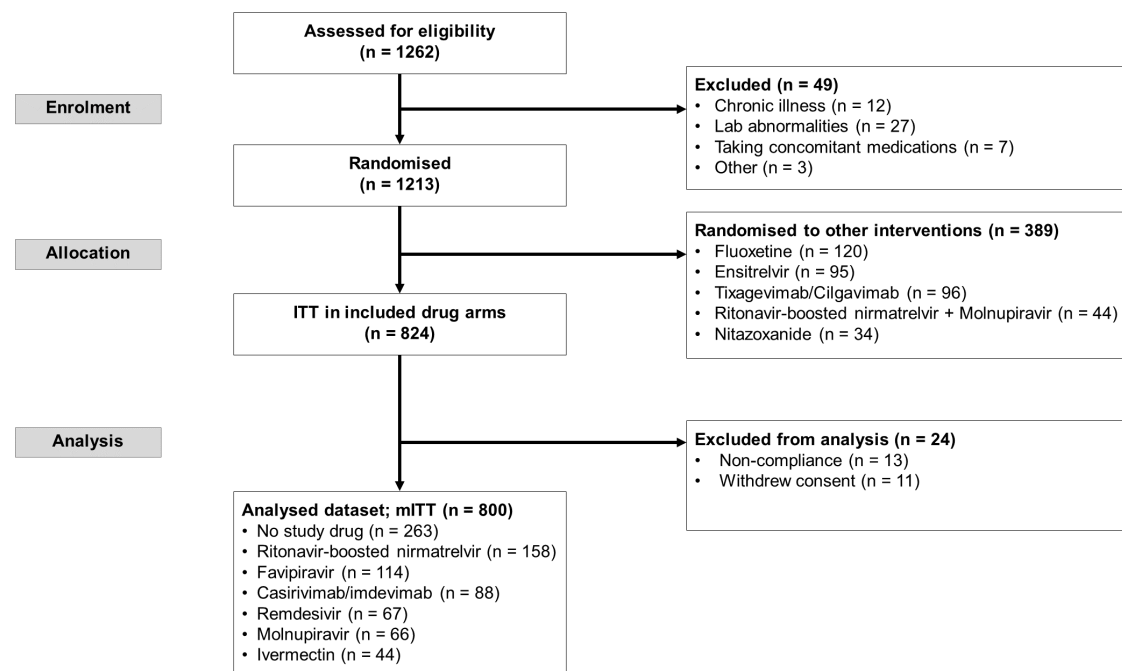


Figure 1: PLATCOV trial profile and selection of patients used in this analysis. This analysis includes patients enrolled between 30<sup>th</sup> September 2021 and 20<sup>th</sup> October 2023 who met the modified intention to treat (mITT) criteria and whose viral clearance data have been unblinded and published.

Table 1: Baseline demographics in the analysis population.

	No study drug	Ritonavir-boosted nirmatrelvir	Favipiravir	Casirivimab/imdevimab	Remdesivir	Molnupiravir	Ivermectin
No. of patients	263	158	114	88	67	66	44
Brazil	26	4	16	0	9	0	0
Thailand	230	150	98	88	58	65	44
Laos	3	4	0	0	0	1	0
Pakistan	4	0	0	0	0	0	0
Age (years)	31.1 (8.1)	31.3 (8.9)	30.2 (7.5)	27.9 (7.3)	30.1 (8.2)	31.3 (7.5)	30.0 (7.0)
Female (%)	65.8	69.0	62.3	62.5	52.2	56.1	54.5
Weight (kg)	63.0 (13.6)	61.5 (12.3)	63.0 (13.6)	60.4 (12.3)	63.9 (11.0)	63.4 (14.7)	61.6 (12.3)
BMI	23.2 (4.1)	23.0 (3.8)	23.1 (3.7)	22.1 (3.1)	22.7 (3.1)	23.1 (4.0)	22.3 (3.2)
Symptom onset (days)	2.1 (0.8)	1.9 (0.7)	2.1 (0.7)	2.2 (0.8)	2.4 (0.8)	2.1 (0.7)	2.3 (0.8)
Admission viral load (log <sub>10</sub> genomes/mL)*	5.6 (4.7-6.4)	5.6 (4.6-6.4)	5.5 (4.7-6.2)	5.7 (5.0-6.4)	5.3 (4.8-6.3)	5.8 (5.0-6.4)	5.6 (5.0-6.6)
Vaccinated (%)	96.2	96.8	98.2	96.6	95.5	98.5	97.7
Start date	Sep 29, 2021	Jun 5, 2022	Oct 10, 2021	Oct 1, 2021	Oct 4, 2021	Jun 5, 2022	Sep 29, 2021
Finish date	Oct 20, 2023 (ongoing)	Oct 20, 2023 (ongoing)	Oct 29, 2022	Oct 19, 2022	Jun 7, 2022	Feb 14, 2022	Apr 11, 2022
Delta	10 (3.8)	0 (0.0)	11 (9.6)	13 (14.8)	10 (14.9)	0 (0.0)	12 (27.3)
BA.1	13 (4.9)	0 (0.0)	21 (18.4)	15 (17.0)	20 (29.9)	0 (0.0)	14 (31.8)
BA.2	52 (19.8)	1 (0.6)	42 (36.8)	30 (34.1)	37 (55.2)	5 (7.6)	18 (40.9)
BA.2.75	43 (16.3)	30 (19.0)	5 (4.4)	5 (5.7)	0 (0.0)	28 (42.4)	0 (0.0)
BA.4	2 (0.8)	3 (1.9)	3 (2.6)	0 (0.0)	0 (0.0)	2 (3.0)	0 (0.0)
BA.5	42 (16.0)	26 (16.5)	32 (28.1)	25 (28.4)	0 (0.0)	28 (42.4)	0 (0.0)
XBB	29 (11.0)	22 (13.9)	0 (0.0)	0 (0.0)	0 (0.0)	3 (4.5)	0 (0.0)
XBB.1.5-like	67 (25.5)	75 (47.5)	0 (0.0)	0 (0.0)	0 (0.0)	0 (0.0)	0 (0.0)
Other	5 (1.9)	1 (0.6)	0 (0.0)	0 (0.0)	0 (0.0)	0 (0.0)	0 (0.0)

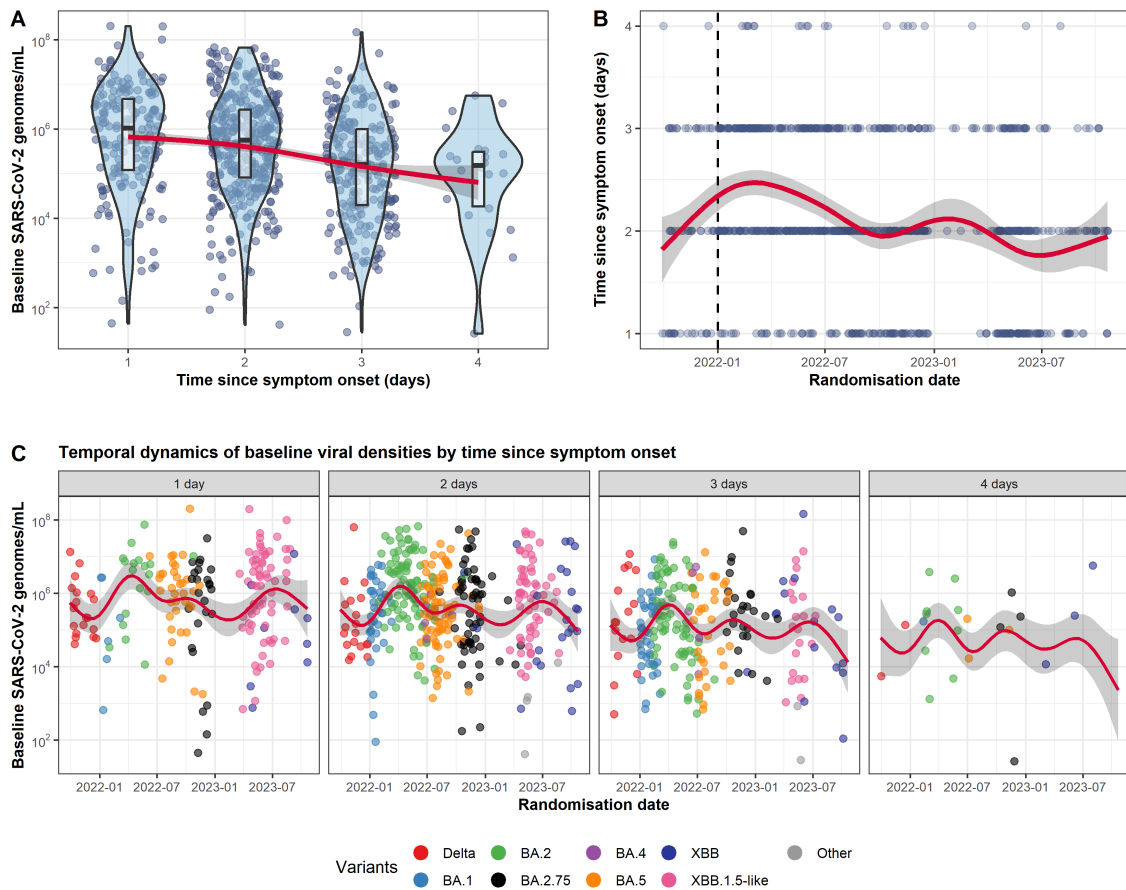


Figure 2: Changes in symptoms duration at enrollment and baseline viral densities over a two year period (2021-2023). Panel A: relationship between reported time since symptom onset and baseline viral density; panel B: temporal changes in the reported time since symptom onset. The vertical dashed line indicates the first Omicron BA.1 infection enrolled in the study; panel C: temporal changes in the baseline viral density stratified by reported time since symptom onset. Red lines and shaded area represent spline model fits and the 95% confidence intervals, respectively.

but the data are compatible with higher peak viral density in specific variants such as BA.2 and XBB.1.5-like.

## Viral clearance rates over time

Viral clearance in COVID-19 follows an approximate bi-exponential (biphasic) decay pattern [19–21]. Previous studies have shown that effective antiviral interventions increase the rate of viral clearance in the first phase [8, 22]. The effect of antivirals on the second phase is less clear and of lesser importance as viral densities are usually fairly low (i.e. unlikely to be transmissible), close to the limit of detection, and clear spontaneously in individuals who are not immunocompromised. The majority of small molecule drugs are given for up to 5 days (e.g. remdesivir, molnupiravir, ritonavir-boosted nirmatrelvir) and have short elimination half-lives. Thus, the primary aim of the PLATCOV trial was to characterise and compare antiviral effects during the first phase of viral clearance. For this reason the primary endpoint included measured viral densities only up until day 7 (day 10 and 14 viral densities were used for the secondary endpoints). We explore here how viral clearance rates have changed over the course of the study and how this impacts the optimal design of pharmacometric assessments.

The viral clearance dynamic has become substantially faster over the two years of the trial, as clearly observed in patients in the no study drug arm (see Supplementary Figure S3). The serial viral load data were analysed under a hierarchical Bayesian linear model whereby temporal changes in the average viral clearance rate between days 0 to 7 in the no study drug arm ( $\alpha_{0-7}$ )

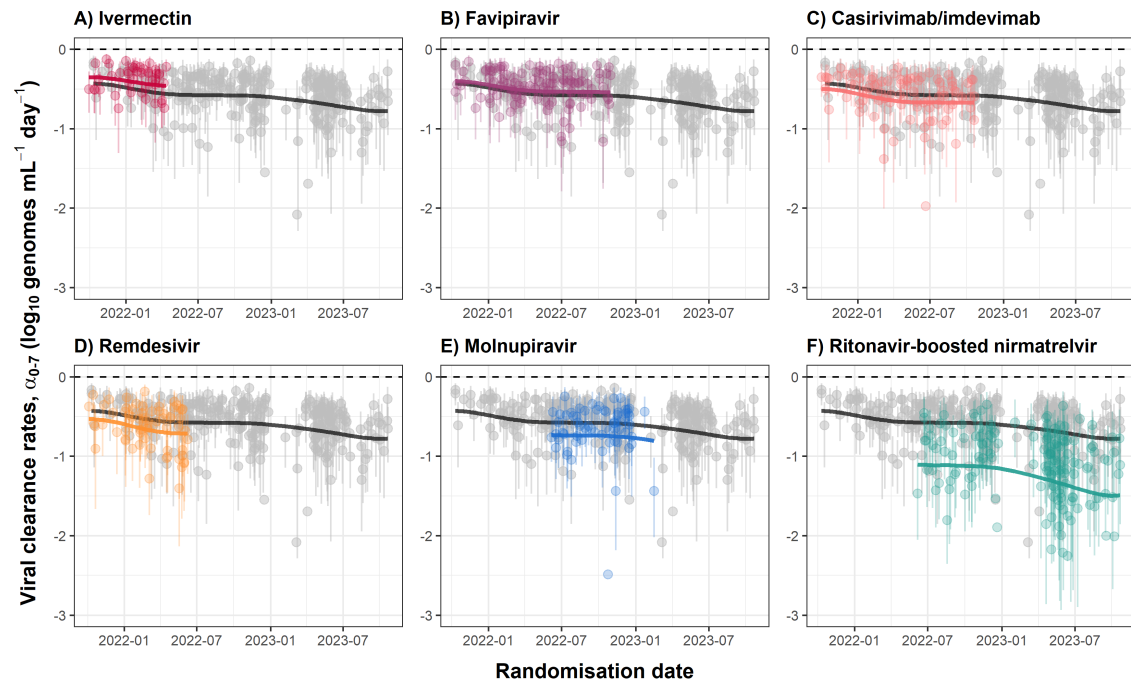


Figure 3: Individual patient rates of viral clearance between days 0 and 7 ( $\alpha_{0-7}$ ). Average clearance rates for each intervention (coloured lines) and the no study drug arm (black line) are estimated from a spline fit (treatment effects parameterised as proportional change in rate). Vertical lines show 95% credible intervals under the linear model. A negative sign of the clearance rate indicates a decreasing directional change in viral density.

were modelled using penalised B-splines. Figure 3 shows the individual clearance rate estimates. Over the course of two years, viral clearance rates increased substantially. In the no study drug arm, median clearance rates have approximately doubled from -0.43 ( $\log_{10}$  units)/day, which corresponds to a half life of around 16.8 hours, in September 2021, to -0.78/day in October 2023, which corresponds to a half-life of around 9.3 hours. This change corresponds to a relative acceleration in viral clearance half-life of 44% [95%CrI: 17 to 67%] over two years. Similar trends are also noted for the treated individuals. For example, the mean viral clearance rate in the ritonavir-boosted nirmatrelvir arm has increased from -1.10/day (equivalent to a half-life of 6.6 hours) in June 2022 to -1.49/day (equivalent to a half-life of 4.8 hours) in October 2023 (Figure 3F), which corresponds to a relative acceleration in viral clearance half-life of 26% [95%CrI: -4 to 42%]. Interestingly, the reduction of viral clearance half-life was most apparent earlier in the study during the transition from Delta in September-December 2021 to BA.2 variant in mid-February 2022 (Figure 4). Subsequently, the half-life plateaued at around 12.5 hours during the BA.2, BA.4, BA.5, and BA.2.75 variants, and gradually reduced again after the emergence of XBB and XBB.1.5-like variant after January 2023.

## Optimising trial design

In light of the substantial changes observed in the viral clearance rates  $\alpha_{0-7}$  over the past two years, we used the available comparative data to assess the optimal duration of follow-up for pharmacometric assessment and thus the rapid identification and evaluation of effective antivirals. We define 'optimal' as the duration of virologic assessment which maximises the expected z-score (the estimated effect size divided by the standard error) for differences in viral clearance rates when comparing an effective randomised intervention with the concurrent no treatment arm or comparing two concurrently randomised interventions with different antiviral efficacies. An effective intervention is defined as an intervention which accelerates viral clearance relative to a control intervention. We bootstrapped the data (sampling patients in each comparison with replacement) to obtain uncertainty intervals for the z-score estimates for the available comparisons. Figure 5 shows the bootstrap z-score estimates for 6 comparisons, as a function of the duration of follow-up data included in the model estimated viral clearance rate (estimated over durations until day 2 up

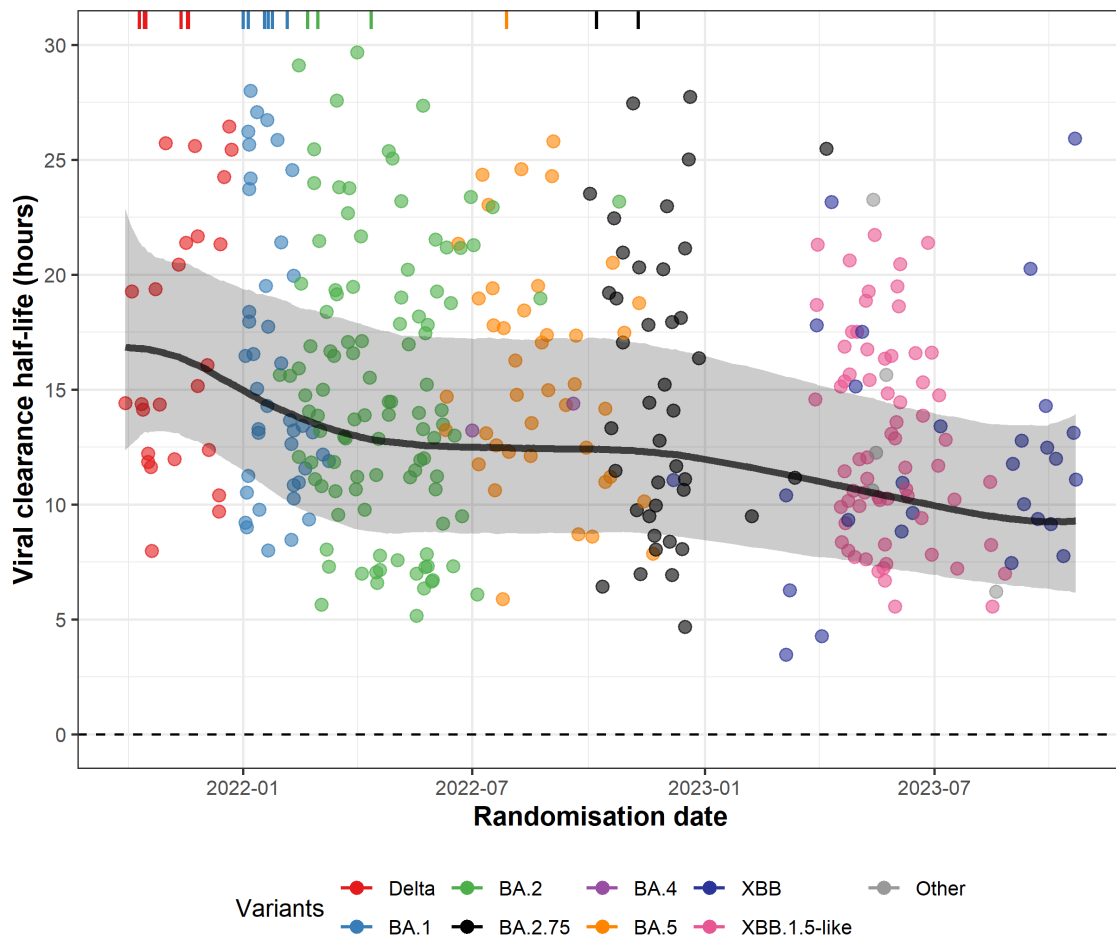


Figure 4: Change over time in the median viral clearance half-life estimated over 7 days in untreated patients. The median population viral clearance half-life (black line) is estimated from a spline fit, with shaded area showing the 95% credible interval. Individual median clearance half-lives are shown for patients in the no study drug, ivermectin or favipiravir arms. Colours show the main viral sub-lineages. The Y-axis was truncated at 30 hours, with ticks on the top axis indicating the timing and viral variant of patients with a clearance half-life above 30 hours.

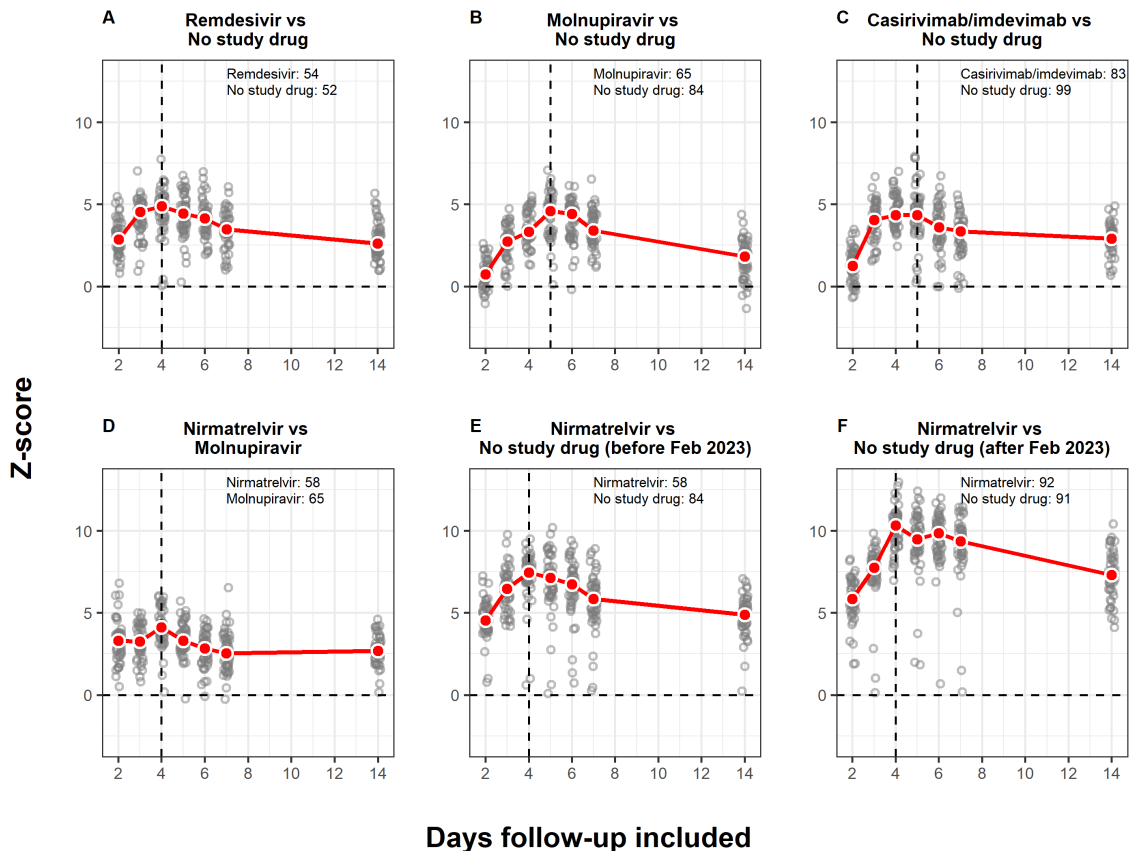


Figure 5: Z-scores for the treatment effect as a function of the follow-up duration. Grey circles represent the estimated z-score for each bootstrap iteration, while red circles (line) show the median estimates across 50 bootstrap iterations per follow-up duration. The vertical dashed line indicates the follow-up duration that maximises z-scores. This ranged between 4 and 5 days of serial sampling. The comparisons only use concurrently randomised controls. Text annotations indicate number of patients in each comparison arm.

251 until day 14). For all pairwise comparisons there is a clear inverted-parabolic relationship between  
 252 the z-score and the duration of follow-up. The expected z-score is maximised for durations between  
 253 4 and 5 days. This implies that 4-5 days follow-up is optimal when the data are analysed under  
 254 a linear model framework. Fitting a log linear model over a longer time period systematically  
 255 reduces the estimate of the slope (i.e. lengthens the half-life) as it incorporates more of the slower  
 256  $\beta$ -phase of viral elimination in the estimate.

## 257 Comparative assessment of antiviral interventions

258 The interventions studied here (ivermectin, remdesivir, favipiravir, molnupiravir, ritonavir-boosted  
 259 nirmatrelvir, and casirivimab/imdevimab) were not randomised concurrently (see Supplementary  
 260 Figure S1). Thus the large observed temporal changes in baseline viral clearance rates will bias  
 261 cross-comparisons. We attempt to adjust for this temporal confounding by explicitly incorporating  
 262 into the model the temporal changes in viral clearance rates in the treatment effect estimation. We  
 263 fit the full Bayesian linear model with a spline term on the baseline clearance rate in the no study  
 264 drug arm (which spans the entire study period) as a function of the calendar date, with treatment  
 265 effects parameterised as proportional changes in the average clearance. Modelling the treatment  
 266 effect as a proportional change on the slope fitted the data better compared to an additive change.

267 Under the model, there is a clear hierarchy between the studied interventions, which remains  
 268 consistent when estimating treatment effects using the average viral clearance rates up until day  
 269 5 ( $\alpha_{0-5}$ ) or up until day 7 ( $\alpha_{0-7}$ ). Ritonavir-boosted nirmatrelvir has the greatest effect on viral  
 270 clearance rates (approx 90% increase in average clearance rates  $\alpha_{0-7}$ ; approximately 130% increase  
 271 in average clearance rates  $\alpha_{0-5}$ ). The small molecule drugs remdesivir and molnupiravir have very

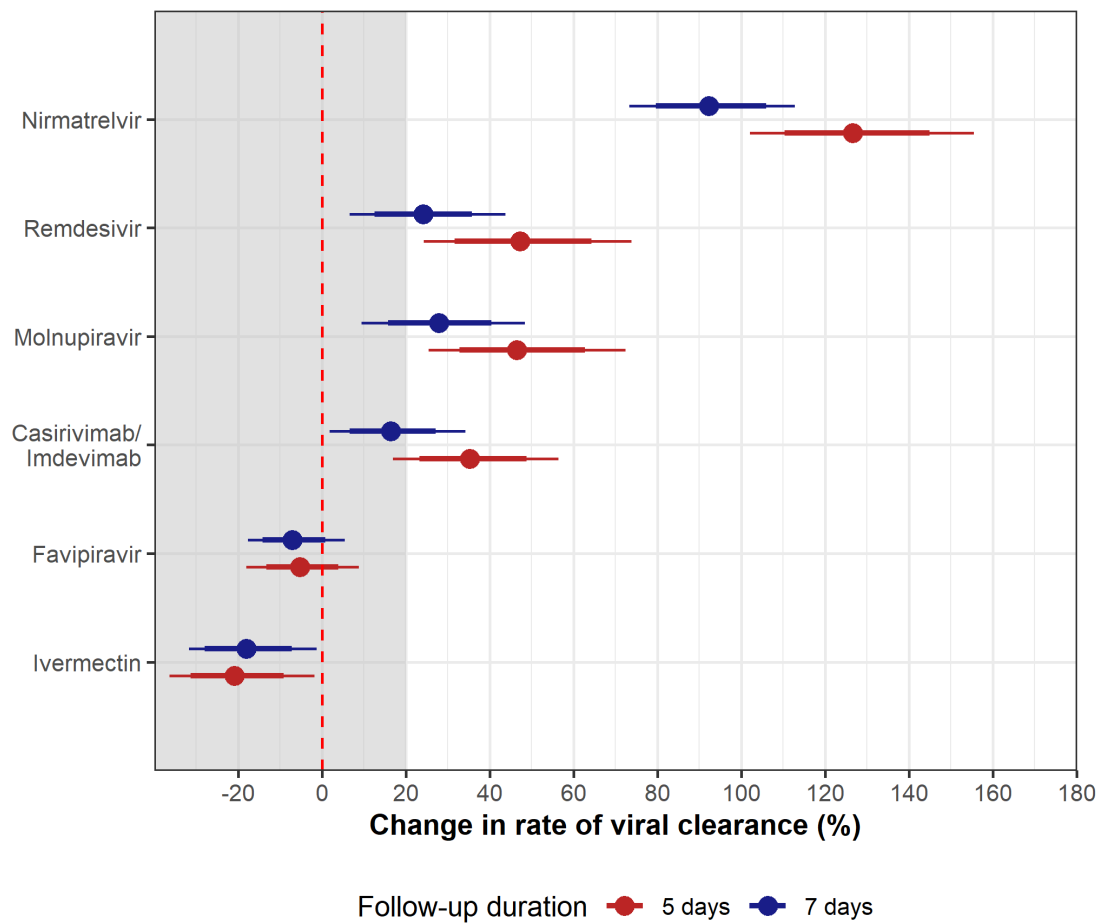


Figure 6: Individual patient data meta-analysis of the treatment effect of the six randomised interventions relative to no study drug. Red: treatment effects based on the average clearance rates over 5 days ( $\alpha_{0-5}$ ); blue: treatment effects based on the average clearance rates over 7 days ( $\alpha_{0-7}$ ). The models explicitly adjust for temporal changes in viral clearance in the no study drug arm using penalised B-splines. Points: median posterior estimate; thick and thin lines: 80% and 95% credible intervals, respectively.

similar effects (approximately 35% increase in average clearance rates  $\alpha_{0-7}$ ; approximately 50 to 60% increase in average clearance rates  $\alpha_{0-5}$ ). The average treatment effect for the monoclonal antibody casirivimab/imdevimab (this analysis ignores known treatment effect heterogeneity [10]) is also of similar magnitude. This meta-analysis confirms the absence of any measurable effect of high-dose ivermectin or high-dose favipiravir. For all four effective interventions, the analysis using the  $\alpha_{0-5}$  average clearance rates estimates substantially larger effect sizes, albeit with slightly wider uncertainty intervals.

## Discussion

SARS-CoV-2 oropharyngeal clearance rates in uncomplicated COVID-19 infections have become substantially faster over the past two years. Natural viral clearance is now twice as fast as it was in September 2021. In this studied cohort, most of whom were fully vaccinated, waves of different viral variants succeeded each other, following a generally similar pattern to that observed in most areas of the world. There was no strong association between particular viral variants and increases in viral clearance rates. Instead there appears to have been a steady increase in clearance rates across all variants over time. Some variants (e.g. BA.2.75) were clearly associated with higher baseline viral densities, which was not explained by differences in the interval from symptom onset. It is not possible to ascribe with confidence the underlying cause for these higher baseline viral loads, but it would be compatible with either differences in viral replication [23] or differences in tropism

[24].

The substantial acceleration in natural viral clearance over the past two years presumably reflects the interplay between the acquisition of immunity and the antigenic changes in the evolving variants. This acceleration in natural viral clearance has important implications for the assessment of in-vivo antiviral activity. SARS-CoV-2 oro/nasopharyngeal clearance is biphasic [19–21]. Effective drugs substantially accelerate the first phase. Two years ago, when viral clearance rates were much slower, the inflexion in the clearance curve (transition from the first to the second slower phase) was close to seven days, so fitting a single rate constant to the log-linear decline in viral densities over seven days incurred relatively little bias. At current rates of viral clearance, the inflexion point is much earlier, so forcing a single rate constant to the serial qPCR values over seven days incurs greater bias resulting in progressive underestimation of the initial phase rate of clearance. This is important for historical comparisons of antiviral activity as with any viral clearance measure, drugs today will result in faster viral clearance than they did earlier in the pandemic. Moderately effective drugs evaluated two years ago (e.g. remdesivir) resulted in viral clearance rates that are similar to those in the no treatment arm of the study today.

The PLATCOV study has characterised the effect of several antiviral drugs with findings which are generally consistent with earlier clinical trials assessing their efficacy in the prevention of disease progression. Using the observed differences in the viral clearance profiles between effective and ineffective drugs or the no treatment arm allowed determination of the sampling duration which best characterised these differences. The greatest differences between effective and ineffective (or no) drugs were observed for assessments made from serial samples taken over 4–5 days. Although there is substantial inter-individual variation in clearance rates, and also intra-individual variation between the serial viral density estimates, with current viral clearance rates, daily sampling still has adequate discriminatory power. But, if this trend of increasing rapidity of viral clearance continues, then it may be necessary to sample twice daily over a shorter period. Shortening the viral clearance serial sampling to five days simplifies the comparative assessment of antiviral drugs in COVID-19 (although later sampling is still necessary if rebound is being assessed).

These data emphasise the critical importance of fixed ratio contemporary comparators in platform trials. Temporal confounding (also known as ‘concept drift’) across non-currently randomised interventions or for time varying randomisation ratios (this occurs in response adaptive trials) requires model dependent adjustment. Even an ineffective drug will appear effective if compared with a historical control. The exact ranking of all unblinded interventions studied on the platform in the meta-analysis is dependent in part on correct adjustment for the temporal trends. This issue is particularly salient for the comparison between remdesivir and molnupiravir.

SARS-CoV-2 is today predominantly a mild infection in vaccinated individuals which does not require specific antiviral treatment. This justifies the recruitment of patients into the pharmacometric assessment who receive no specific treatment. But in patients with underlying conditions or the elderly, COVID-19 is still potentially dangerous and specific antiviral treatment is required. There is no reason to believe that antiviral activities are different in these high risk subgroups to those observed in low risk patients enrolled in this study. At the beginning of the pandemic there were no effective interventions and so identifying minor accelerations in viral clearance was relevant. Today modest acceleration in the rate of viral clearance may still be therapeutically relevant for chemoprevention (see accompanying results on fluoxetine [18]), but it is very unlikely that less effective drugs than those now being used would be deployed for the treatment of symptomatic COVID-19. The simple methodology employed in the PLATCOV trial is efficient, and very well tolerated, and it identifies efficacious antivirals (i.e. with viral clearance rates which are < 20% faster than no drug) with sample sizes which are usually less than 40 studied patients per arm.

Although this is the largest detailed pharmacometric study in COVID-19 it has some limitations. Most of the patients were studied in Bangkok, Thailand so the temporal trends observed could be different in other parts of the world. The cause of the substantial inter-patient variations in viral clearance and the overall acceleration in viral clearance over the past two years has not been characterised adequately.

In summary, SARS-CoV-2 viral clearance has accelerated substantially over the past two years necessitating a shortening of the sampling time to evaluate and compare antiviral drugs efficiently.

## 344 Role of the funding source

345 The funder of the study had no role in study design, data collection, data analysis, data interpretation,  
346 or writing of the report.

## 347 Acknowledgements

348 NJW is a Principal Research Fellow funded by the Wellcome Trust (093956/Z/10/C). JAW is a Sir  
349 Henry Dale Fellow funded by the Wellcome Trust (223253/Z/21/Z). This study is supported by  
350 Wellcome Trust grant reference 223195/Z/21/Z through the COVID-19 Therapeutics Accelerator.  
351 We thank all the patients with COVID-19 who volunteered to be part of the study. We thank  
352 the data safety and monitoring board (Tim Peto, André Siqueira, and Panisadee Avirutnan); the  
353 trial steering committee (Nathalie Strub-Wourgaft, Martin Llewelyn, Deborah Waller, and Attavit  
354 Asavisanu); Sompob Saralamba and Tanaphum Wichaita for developing the Rshiny randomisation  
355 app; and Mavuto Mukaka for invaluable statistical support. We also thank all the staff of the  
356 clinical trials unit at MORU, Thermo Fisher for their excellent support with this project, and all  
357 the hospital staff at the Hospital for Tropical Diseases, as well as those involved in sample processing  
358 in MORU and the processing and analysis at the Faculty of Tropical Medicine, Mahidol University,  
359 molecular genetics laboratory, and the malaria laboratory. We thank the Department of Medical  
360 Services, Ministry of Public Health, Thailand for the generous support and the donation of the  
361 molnupiravir and ritonavir-boosted nirmatrelvir for this study. We thank the MORU Clinical Trials  
362 Support Group for data management, monitoring and logistics, and the purchasing, administration  
363 and support staff at MORU.

364 This research was partly funded by Wellcome. A CC BY or equivalent licence is applied to  
365 the author accepted manuscript arising from this submission, in accordance with the grant's open  
366 access conditions.

## 367 Authorship contributions

368 PW: conceptualisation, data curation, formal analysis, methodology, visualisation and writing-  
369 original draft; WHKS: conceptualisation, funding acquisition, investigation, methodology, project  
370 administration, supervision, validation and writing- original draft; NJW: conceptualisation, fund-  
371 ing acquisition, methodology, supervision, validation and writing- original draft; JAW: conceptuali-  
372 sation, data curation, formal analysis, funding acquisition, methodology, visualisation and writing-  
373 original draft; PJ: investigation, methodology, project administration, supervision, and validation;  
374 SB, and SS: investigation, methodology and project administration; VL, TS, TN, BH, and KP:  
375 investigation, methodology, and supervision; EMB: data curation, and formal analysis; JK, WPa,  
376 and PK: investigation, methodology; MM, and EAA: investigation, supervision, funding acquisi-  
377 tion; KC and MI: formal analysis, investigation, resources, supervision; SP, AMD, MMT, WPi,  
378 WPh: methodology, investigation, resources, supervision; NPJD: funding acquisition, methodol-  
379 ogy, investigation, resources, supervision; all Authors were involved in writing- review & editing.

## 380 Conflict of Interest Disclosures

381 The authors have no conflicts of interest.

## 382 References

- 383 [1] Weinreich DM, Sivapalasingam S, Norton T, Ali S, Gao H, Bhore R, et al. REGEN-COV  
384 Antibody Combination and Outcomes in Outpatients with Covid-19. *New England Journal*  
385 *of Medicine*. 2021;385(23):e81. doi:10.1056/NEJMoa2108163.
- 386 [2] Gottlieb RL, Vaca CE, Paredes R, Mera J, Webb BJ, Perez G, et al. Early Remdesivir to  
387 Prevent Progression to Severe Covid-19 in Outpatients. *New England Journal of Medicine*.  
388 2022;386(4):305–315. doi:10.1056/NEJMoa2116846.

- 389 [3] Hammond J, Leister-Tebbe H, Gardner A, Abreu P, Bao W, Wisemandle W, et al. Oral  
390 Nirmatrelvir for High-Risk, Nonhospitalized Adults with Covid-19. *New England Journal of*  
391 *Medicine*. 2022;386(15):1397–1408. doi:10.1056/NEJMoa2118542.
- 392 [4] Jayk Bernal A, Gomes da Silva MM, Musungaie DB, Kovalchuk E, Gonzalez A, Delos Reyes  
393 V, et al. Molnupiravir for Oral Treatment of Covid-19 in Nonhospitalized Patients. *New*  
394 *England Journal of Medicine*. 2022;386(6):509–520. doi:10.1056/NEJMoa2116044.
- 395 [5] Schilling WHK, Jittamala P, Watson JA, Boyd S, Luvira V, Siripoon T, et al. Antiviral effi-  
396 cacy of molnupiravir versus ritonavir-boosted nirmatrelvir in patients with early symptomatic  
397 COVID-19 (PLATCOV): an open-label, phase 2, randomised, controlled, adaptive trial. *The*  
398 *Lancet Infectious Diseases*. 2024;24(1):36–45.
- 399 [6] Yotsuyanagi H, Ohmagari N, Doi Y, Yamato M, Bac NH, Cha BK, et al. Efficacy and Safety  
400 of 5-Day Oral Ensitrelvir for Patients With Mild-to-Moderate COVID-19: The SCORPIO-SR  
401 Randomized Clinical Trial. *medRxiv* (preprint). 2023;doi:10.1101/2023.07.11.23292264.
- 402 [7] Butler CC, Hobbs FDR, Gbinigie OA, Rahman NM, Hayward G, Richards DB, et al. Mol-  
403 nupiravir plus usual care versus usual care alone as early treatment for adults with COVID-  
404 19 at increased risk of adverse outcomes (PANORAMIC): an open-label, platform-adaptive  
405 randomised controlled trial. *The Lancet*. 2023;401(10373):281–293. doi:10.1016/S0140-  
406 6736(22)02597-1.
- 407 [8] Watson JA, Kissler SM, Day NPJ, Grad YH, White NJ. Characterizing SARS-CoV-2 viral  
408 clearance kinetics to improve the design of antiviral pharmacometric studies. *Antimicrob*  
409 *Agents Chemother*. 2022;66(7):e0019222.
- 410 [9] Schilling WH, Jittamala P, Watson JA, Ekkapongpisit M, Siripoon T, Ngamprasertchai  
411 T, et al. Pharmacometrics of high-dose ivermectin in early COVID-19 from an open la-  
412 bel, randomized, controlled adaptive platform trial (PLATCOV). *eLife*. 2023;12:e83201.  
413 doi:10.7554/eLife.83201.
- 414 [10] Jittamala P, Schilling WHK, Watson JA, Luvira V, Siripoon T, Ngamprasertchai T, et al.  
415 Clinical antiviral efficacy of remdesivir and casirivimab/imdevimab against the SARS-CoV-2  
416 Delta and Omicron variants. *medRxiv*. 2022; p. 2022–10.
- 417 [11] Luvira V, Schilling WH, Jittamala P, Watson JA, Boyd S, Siripoon T, et al. Clinical antiviral  
418 efficacy of favipiravir in early COVID-19 (PLATCOV): an open-label, randomised, controlled  
419 adaptive platform trial. *BMC Infectious Diseases*, in press. 2023;.
- 420 [12] Jittamala P, Schilling WHK, Watson JA, Luvira V, Siripoon T, Ngamprasertchai T, et al.  
421 Clinical Antiviral Efficacy of Remdesivir in Coronavirus Disease 2019: An Open-Label, Ran-  
422 domized Controlled Adaptive Platform Trial (PLATCOV). *The Journal of Infectious Diseases*.  
423 2023; p. jiad275. doi:10.1093/infdis/jiad275.
- 424 [13] Bates D, Mächler M, Bolker B, Walker S. Fitting Linear Mixed-Effects Models Using lme4.  
425 *Journal of Statistical Software*. 2015;67(1):1 – 48.
- 426 [14] Wood SN. Fast stable restricted maximum likelihood and marginal likelihood estimation of  
427 semiparametric generalized linear models. *Journal of the Royal Statistical Society, Series B*  
428 *(Statistical Methodology)*. 2011;73(1):3–36. doi:10.1111/j.1467-9868.2010.00749.x.
- 429 [15] Vehtari A, Gelman A, Gabry J. Practical Bayesian model evaluation using leave-one-out cross-  
430 validation and WAIC. *Statistics and Computing*. 2017;27(5):1413–1432. doi:10.1007/s11222-  
431 016-9696-4.
- 432 [16] Stan Development Team. RStan: the R interface to Stan; 2023. Available from: <https://mc-stan.org/>.
- 433  
434 [17] R Core Team. R: A Language and Environment for Statistical Computing; 2023. Available  
435 from: <https://www.R-project.org/>.
- 436 [18] Jittamala P, Boyd S, Schilling WH, Watson JA, Siripoon T, Luvira V, et al. Antiviral efficacy  
437 of fluoxetine in early symptomatic COVID-19: an open-label, randomised, controlled, adaptive  
438 platform trial (PLATCOV). *Medrxiv*. 2024;.

- 439 [19] Néant N, Lingas G, Le Hingrat Q, Ghosn J, Engelmann I, Lepiller Q, et al. Modeling SARS-  
440 CoV-2 viral kinetics and association with mortality in hospitalized patients from the French  
441 COVID cohort. *Proceedings of the National Academy of Sciences*. 2021;118(8):e2017962118.  
442 doi:10.1073/pnas.2017962118.
- 443 [20] Ke R, Martinez PP, Smith RL, Gibson LL, Mirza A, Conte M, et al. Daily longitudinal  
444 sampling of SARS-CoV-2 infection reveals substantial heterogeneity in infectiousness. *Nature*  
445 *Microbiology*. 2022;7(5):640–652. doi:10.1038/s41564-022-01105-z.
- 446 [21] Ribeiro RM, Choudhary MC, Deo R, Giganti MJ, Moser C, Ritz J, et al. Variant-  
447 Specific Viral Kinetics in Acute COVID-19. *The Journal of Infectious Diseases*.  
448 2023;228(Supplement\_2):S136–S143. doi:10.1093/infdis/jiad314.
- 449 [22] Chew KW, Moser C, Daar ES, Wohl DA, Li JZ, Coombs RW, et al. Antiviral and clinical  
450 activity of bamlanivimab in a randomized trial of non-hospitalized adults with COVID-19.  
451 *Nature Communications*. 2022;13(1):4931. doi:10.1038/s41467-022-32551-2.
- 452 [23] Marc A, Marlin R, Donati F, Prague M, Kerioui M, Hérate C, et al. Impact of variants  
453 of concern on SARS-CoV-2 viral dynamics in non-human primates. *PLOS Computational*  
454 *Biology*. 2023;19(8):1–16. doi:10.1371/journal.pcbi.1010721.
- 455 [24] Meng B, Abdullahi A, Ferreira IATM, Goonawardane N, Saito A, Kimura I, et al. Altered  
456 TMPRSS2 usage by SARS-CoV-2 Omicron impacts infectivity and fusogenicity. *Nature*.  
457 2022;603(7902):706–714. doi:10.1038/s41586-022-04474-x.

**Assessed for eligibility  
(n = 1262)**

**Enrolment**

**Randomised  
(n = 1213)**

**Excluded (n = 49)**

- Chronic illness (n = 12)
- Lab abnormalities (n = 27)
- Taking concomitant medications (n = 7)
- Other (n = 3)

**Allocation**

**ITT in included drug arms  
(n = 824)**

**Randomised to other interventions (n = 389)**

- Fluoxetine (n = 120)
- Ensitrelvir (n = 95)
- Tixagevimab/Cilgavimab (n = 96)
- Ritonavir-boosted nirmatrelvir + Molnupiravir (n = 44)
- Nitazoxanide (n = 34)

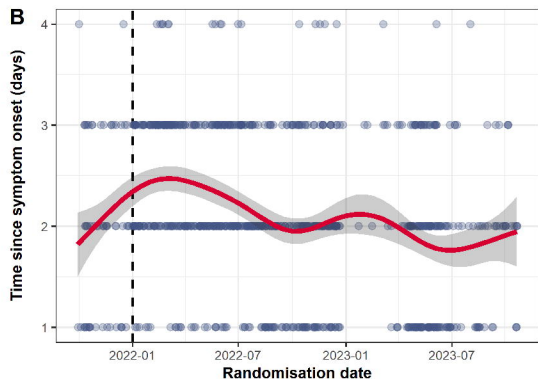
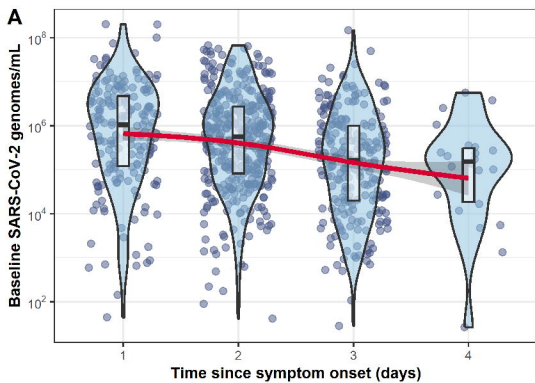
**Analysis**

**Excluded from analysis (n = 24)**

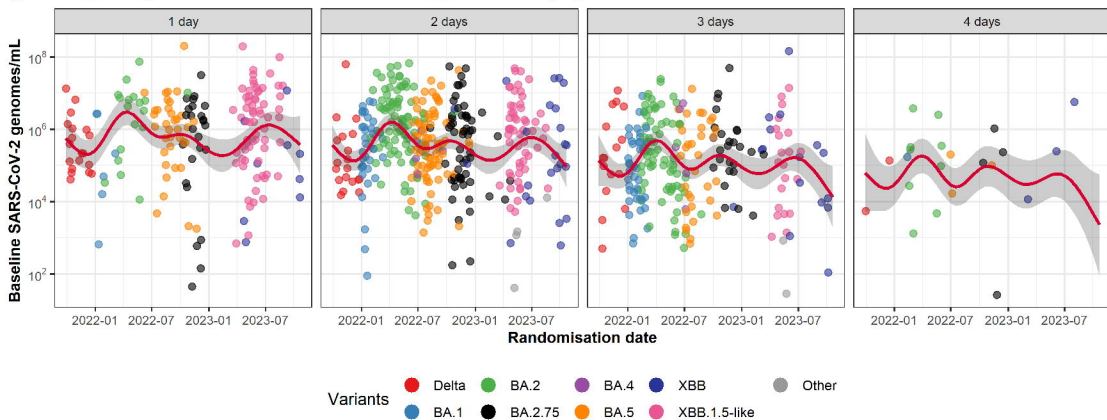
- Non-compliance (n = 13)
- Withdrew consent (n = 11)

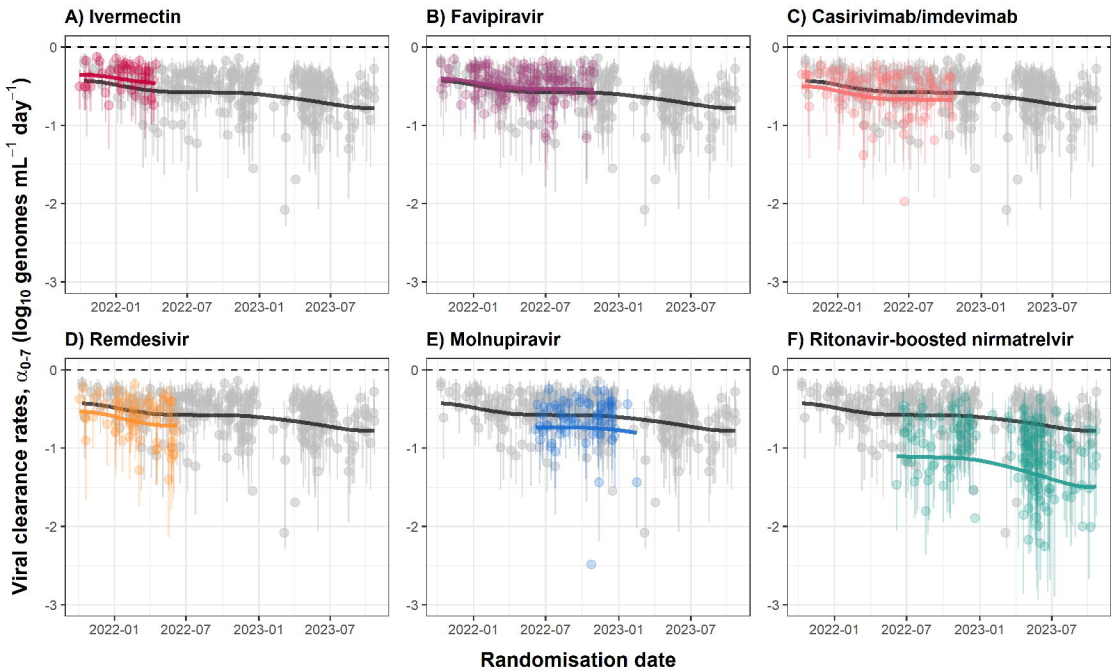
**Analysed dataset; mITT (n = 800)**

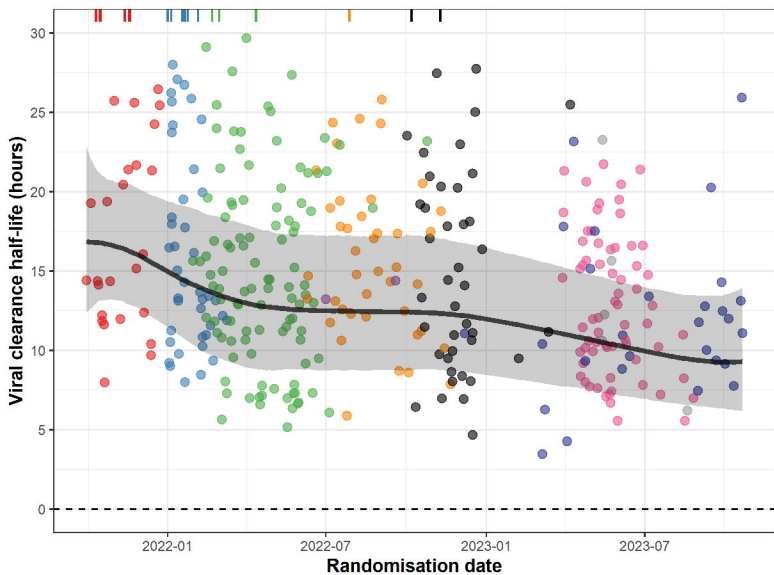
- No study drug (n = 263)
- Ritonavir-boosted nirmatrelvir (n = 158)
- Favipiravir (n = 114)
- Casirivimab/imdevimab (n = 88)
- Remdesivir (n = 67)
- Molnupiravir (n = 66)
- Ivermectin (n = 44)



**C** Temporal dynamics of baseline viral densities by time since symptom onset







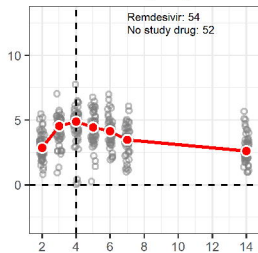
Variants

- Delta
- BA.1
- BA.2
- BA.2.75
- BA.4
- BA.5
- XBB
- XBB.1.5-like
- Other

Z-score

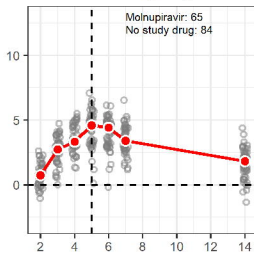
**A**

**Remdesivir vs  
No study drug**



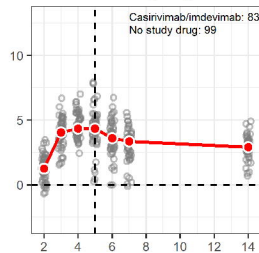
**B**

**Molnupiravir vs  
No study drug**



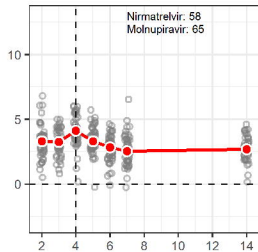
**C**

**Casirivimab/imdevimab vs  
No study drug**



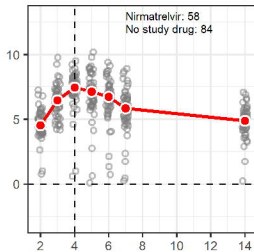
**D**

**Nirmatrelvir vs  
Molnupiravir**



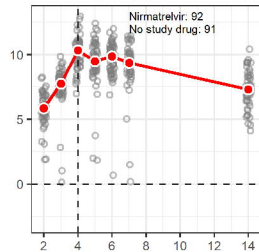
**E**

**Nirmatrelvir vs  
No study drug (before Feb 2023)**



**F**

**Nirmatrelvir vs  
No study drug (after Feb 2023)**



**Days follow-up included**

