

1 **Frailty, Mental Disorders, and Metabolic Syndrome: A Genetic Association** 2 **and Mediation Mendelian Randomization Study**

3

4 Ming-Gang Deng^{1,2}, Kai Wang³, Jia-Qi Nie⁴, Fang Liu⁵, Yuehui Liang⁵, Jiewei Liu^{1,2}

5

6 ¹ Department of Psychiatry, Wuhan Mental Health Center, Wuhan 430012, Hubei, China

7 ² Department of Psychiatry, Wuhan Hospital for Psychotherapy, Wuhan 430012, Hubei, China

8 ³ Department of Public Health, Wuhan Fourth Hospital, Wuhan 430033, Hubei, China

9 ⁴ Xiaogan Center for Disease Control and Prevention, Xiaogan 432000, Hubei, China

10 ⁵ School of Public Health, Wuhan University, Wuhan 430071, Hubei, China

11

12 **Equal contribution:**

13 Ming-Gang Deng and Kai Wang.

14 **Correspondence:**

15 Ming-Gang Deng (deng.minggang@outlook.com)

16 Jiewei Liu (liujiewei@hust.edu.cn)

NOTE: This preprint reports new research that has not been certified by peer review and should not be used to guide clinical practice.

17 **Abstract**

18 **Objective:** To examine the genetic associations of metabolic syndrome (MetS) with frailty and mental
19 disorders [depression, schizophrenia (SCZ), and bipolar disorder (BIP)], along with causality between frailty
20 and MetS and the mediating role of mental disorders.

21 **Methods:** The summary-level datasets were obtained from recent genome-wide association studies. The
22 genetic correlation was explored from the perspectives of global and local genetic correlation. Univariate
23 Mendelian Randomization (UMR) was used to investigate the causal link between frailty and metabolic
24 syndrome (MetS), followed by multivariate MR to address the confounding effects of body mass index
25 (BMI) and physical activity (PA). Finally, two-step MR analyses were conducted to examine whether the
26 causal relationship was mediated by mental disorders.

27 **Results:** The global genetic correlation analyses presented MetS was positively associated with frailty and
28 depression, but reversely related to SCZ. Similarly, MetS was locally correlated to frailty, depression, and
29 SCZ in numerous genomic regions. The UMR demonstrated that fragile people have a higher likelihood of
30 suffering from MetS (OR: 2.773, 95% CI: 1.455-5.286, $p = 0.002$), and reversely people with MetS tended to
31 be more fragile (beta: 0.211, 95% CI: 0.180-0.241, $p < 0.001$). This bidirectional causal association still
32 existed even after adjusting for BMI and PA. The mediation analyses implied this causality was mediated by
33 depression, but not SCZ and BIP.

34 **Conclusion:** Our research provided evidence of genetic correlations between MetS and frailty, depression,
35 and SCZ. Additionally, we discovered a bidirectional causality between frailty and MetS, with depression
36 playing a significant mediating role.

37 **Keywords:** frailty; metabolic syndrome; depression; Genetic association; Mendelian Randomization.

38 **1. Introduction**

39 Frailty, defined as a decrease in function across various physiological systems coupled with heightened
40 sensitivity to stressors, is experiencing a significant rise due to the aging population (1). Concurrently,
41 frailty is linked to numerous negative health outcomes and a surge in healthcare expenditures (2; 3).
42 Metabolic syndrome (MetS), which was initially recognized as a prevalent metabolic disorder stemming
43 from the rise in obesity rates, is now acknowledged by the International Diabetes Federation as a
44 constellation of risk factors for cardiovascular diseases and type 2 diabetes (4). Its contribution to a range
45 of non-communicable chronic diseases results in a substantial disease burden, underscoring the
46 importance of early prevention.

47 The positive association between frailty and MetS has gained wide recognition through numerous
48 epidemiological studies. Notably, a meta-analysis comprising 11 observational studies revealed a
49 significant correlation between MetS and the occurrence of frailty (5). Furthermore, in a cohort study of
50 1,499 older adults free from diabetes at the outset, those with MetS were found to have a higher risk of
51 developing frailty (6). Additionally, findings from the Irish Longitudinal Study on Ageing indicated an
52 escalated risk of developing frailty over a period of four years associated with MetS (7). However, the
53 precise causative relationship between frailty and MetS remains insufficiently explored as the
54 observational study design was susceptible to confounding bias and reverse causality.

55 Recent research has shed light on the complex development of frailty and MetS, focusing on insulin
56 resistance as a central explanatory factor. At the same time, studies have revealed a significant connection
57 between insulin resistance and various mental health disorders, including depression(8), schizophrenia
58 (SCZ)(9), and bipolar disorder (BIP)(10). Additionally, our previous study has shown the causal bidirectional
59 causal association of frailty with depression and SCZ, leading to an in-depth exploration of the potential
60 mediating role of mental health disorders in explaining the causal link between frailty and MetS. Ongoing

61 investigations into the mediating role of mental disorders have the potential to provide valuable insights
62 into the complex interconnections among these conditions.
63 Large-scale genome-wide association studies (GWASs) have identified numerous genetic loci associated
64 with frailty, MetS, and mental disorders, which could enhance the statistical power and offer the
65 opportunity to explore their genetic associations. In addition, Mendelian Randomization (MR), which uses
66 genetic variants (single nucleotide polymorphisms, SNPs) as instruments, is a powerful method for
67 obtaining robust causal inference and has been widely utilized in recent epidemiological research(11; 12).
68 As a result, this study aimed to investigate the genetic association and causality between frailty and MetS
69 and to check whether mental disorders played mediation roles.

70 **2. Method and materials**

71 **2.1. Study design**

72 An outline of the study design for this research is presented in **Fig 1**. The study was conducted in two parts:
73 The first part involved exploring the genetic correlation of MetS with frailty and mental disorders through
74 global and local genetic correlation analyses. The second part aimed to examine the causal relationship
75 between frailty and MetS and determine whether mental disorders played a mediating role. The causal
76 association between frailty and MetS was initially assessed via univariate MR (UMR) analyses, followed by
77 multivariate MR (MVMR) analyses with adjustments for confounders. The mediating roles of mental
78 disorders were evaluated through two-step MR analyses.

79 **2.2. Data sources**

80 The genetic variants associated with frailty were derived from a recent large-scale GWAS study of fried
81 frailty scores, as delineated by the five criteria: weight loss, exhaustion, physical activity, walking speed,
82 and grip strength(13). The study included 386,565 participants of European descent enrolled in the UK
83 Biobank, whose average age was 57 years old and women made up 54% of the total.

84 The genetic data related to MetS are based on the latest study from the Complex Trait Genetics Lab (CTG),
85 which contains 461,920 valid subjects of European ancestry(14). The researchers systematically analyzed
86 genetic correlations of fasting glucose, high-density lipoprotein (HDL) cholesterol, systolic blood pressure,
87 triglycerides, and waist circumference using the structural equation modeling method, and identified 235
88 loci related to MetS.

89 For the mental disorders, we focused on depression, schizophrenia (SCZ), and bipolar disorder (BIP), which
90 were common and have been linked to MetS. Data related to depression was obtained from the
91 Integrative Psychiatric Research (iPSYCH) consortium, which included 166,773 cases and 507,679
92 controls(15). The genetic data related to SCZ and BIP were retrieved from the Psychiatric Genomics
93 Consortium (PGC). The GWAS of SCZ was composed of 52,017 individuals with SCZ and 75,889
94 controls(16), while the BIP data included 40,463 people with BIP and 313,436 controls(17).

95 **2.3. Genetic association**

96 We evaluated the genetic association of MetS with frailty and mental disorders from two perspectives:
97 global and local genetic correlation. The global genetic correlation was calculated using linkage
98 disequilibrium score regression (LDSC), which allowed us to assess the cross-trait genetic correlation from
99 GWAS summary statistics. The estimate (r_g) varies from -1 to +1, with -1 indicating a complete negative
100 correlation, and +1 representing a perfect positive correlation.

101 SUPERGNOVA (SUPER GeNetic cOVariance Analyzer), a statistical framework to perform local genetic
102 correlation analysis, was used to quantify the genetic similarity of two traits in genomic regions. The
103 algorithm partitions the entire genome into approximately 2,353 LD-independent blocks and offers a
104 precise quantification of the similarity between pairs of traits influenced by genetic variations in each
105 region. The statistical significance threshold for testing the local genetic correlation was corrected by the
106 Bonferroni method.

107 2.4. Mendelian Randomization

108 2.4.1. Instrumental variants selection

109 SNPs were Initially screened utilizing a threshold of genome-wide significance ($p < 5 \times 10^{-8}$) to identify
110 robust relationships with exposures. The F statistic was then calculated to determine if the SNPs were
111 susceptible to weak instrument bias, and the instruments having an F statistic of less than 10 were
112 eliminated.

113 Subsequently, the PLINK v1.9 was employed to clump for linkage disequilibrium (LD) with the European
114 samples from the 1000 Genome Project as the reference panel, and the clumping R^2 cutoff was set to 0.001
115 within a window size of 10,000 kb. If the LD effect was identified, only the SNP with the lowest p -value
116 would be kept.

117 We then harmonized the exposure and outcome datasets, where the palindromic SNPs were excluded. If
118 any instrument was unavailable in the outcome data, it would be replaced by the proxied genetic
119 variations (minimum LD $R^2 = 0.8$ and minor allele frequency threshold = 0.3). After the aforementioned
120 procedures were completed, the remained SNPs were utilized for conducting the MR analysis.

121 2.4.2. Statistical analyses

122 We first performed the UMR to assess the causal relationship between frailty and MetS. The inverse
123 variance weighted (IVW) method was treated as the primary method to obtain the causal estimate. This
124 method assumes the presence of an average pleiotropic effect and is the most efficient method in this
125 case. Prior to performing the IVW analyses, Cochran's Q statistic was calculated to evaluate whether
126 heterogeneity existed among the genetic variants. If significant heterogeneity was detected (p -value <
127 0.05), the causal effect would be estimated under the random-effect IVW method; otherwise, the
128 fixed-effect method would be used. In addition to the IVW method, three pleiotropy robust methods
129 including MR-Egger, weighted median, and MR-LASSO were employed to evaluate the stability of the

130 results. The leave-one-out (LOO) analyses and MR-Egger regression intercept term were respectively
131 conducted to check whether the overall effect was driven by a single SNP or to assess the possible
132 presence of horizontal pleiotropy.

133 Apart from the UMR, the MVMR analyses were conducted to obtain the causal inference with adjustments
134 for the confounding effect. MVMR as an extension of UMR, using genetic variants associated with multiple
135 and potentially related exposures, could detect the causal effects of multiple risk factors jointly. Before
136 performing the MVMR analyses, the PhenoScanner was employed to evaluate which confounders the
137 selected SNPs were associated with ($p < 1 \times 10^{-5}$). Body mass index (BMI) was discovered to be related to
138 the instrumental variants associated with frailty, as well as MetS. In addition to BMI, physical activity (PA) as
139 a common and easily modifiable lifestyle factor has been displayed to be associated with the risks of both
140 frailty and MetS. As a result, we estimated the causal effect between frailty and MetS with adjustments for
141 BMI and PA, and the IVW, MR-Egger, weighted median, and MR-LASSO methods were adopted.

142 Following the UMR and MVMR to assess the relationship between frailty and MetS, we applied the
143 two-step UMR analyses to explore whether the mental disorders could mediate this association. When
144 frailty was the exposure, the first step was to obtain the causal effect of frailty on mental disorders, while
145 the second step was to obtain the causal effect of mental disorders on MetS. As for the reverse analyses,
146 the first and second steps were to estimate the causal effects of MetS on mental disorders, and mental
147 disorders on frailty, respectively. Similar to the above MR analyses, the IVW Method was employed as the
148 primary method for causal inference, and the MR-Egger, weighted median as well as MR-LASSO were
149 supplemented. The mediating effect proportions were calculated based on the estimates from the IVW
150 method.

151 The MR analyses were conducted in in R software (version 4.3.1, R Foundation for Statistical Computing)
152 with related *TwoSampleMR* (version 0.5.8), and *MendelianRandomization* (version 0.9.0) packages. Effect
153 estimates were reported in β values with 95% confidence interval (CI) when the outcome was frailty and

154 were converted to odds ratio (OR) when the outcome was the others. All statistical tests were two-tailed,
155 and $\alpha = 0.05$ was considered as the significant level.

156 **3. Results**

157 **3.1. Genetic association analyses**

158 The results of global genetic correlation analyses by the LDSC presented that genetically predicted MetS
159 was positively related to frailty ($r_g = 0.640$, $se = 0.026$, $p = 2.83 \times 10^{-134}$), depression ($r_g = 0.194$, $se = 0.028$, p
160 $= 6.45 \times 10^{-12}$), and negatively related to SCZ ($r_g = -0.103$, $se = 0.020$, $p = 1.36 \times 10^{-7}$), but not correlated to
161 BIP ($r_g = -0.030$, $se = 0.021$, $p = 0.157$).

162 Similar to the global genetic correlation results, the local genetic correlation analyses demonstrated that
163 MetS was locally correlated with frailty, depression, and SCZ, while no locally correlated genomic regions
164 were identified between MetS and BIP (**Fig 2**). In particular, MetS was correlated with frailty in 18 genomic
165 regions after correcting for multiple tests, and the estimates were all positive. Similarly, MetS was
166 positively associated with depression in the three significant regions, while negatively related to SCZ in the
167 2 of 5 significant regions.

168 **3.2. Mendelian Randomization analyses**

169 **3.2.1. Causal relationship between frailty and MetS**

170 The results of UMR to obtain the causality between frailty and MetS are presented in **Table 1**. The
171 Cochran's Q test indicated there was significant heterogeneity among the instruments related to frailty
172 (Cochran's Q = 581.184, $p < 0.001$) and MetS (Cochran's Q = 649.002, $p < 0.001$). Therefore, the primary
173 effect sizes were estimated by the random-effect IVW method. The IVW method showed that genetically
174 predicted frailty was positively correlated with the risk of MetS (OR: 2.773, 95% CI: 1.455-5.286, $p = 0.002$),
175 and this causality was supported by the weighted median (OR: 2.065, 95% CI: 1.692-2.519, $p < 0.001$), and
176 MR-LASSO methods (OR: 1.994, 95% CI: 1.618-2.457, $p < 0.001$). The reverse analyses indicated that people

177 with MetS were meanwhile more likely to be fragile (beta = 0.211, 95% CI: 0.180-0.241, $p < 0.001$), and the
178 supplementary methods including MR-Egger (beta: 0.185, 95% CI: 0.100-0.270, $p < 0.001$), weighted
179 median (beta: 0.209, 95% CI: 0.173-0.244, $p < 0.001$), and MR-LASSO (beta: 0.232, 95% CI: 0.214-0.251, p
180 < 0.001) presented similar estimates. Sensitivity analyses conducted by the MR-Egger regression intercept
181 term presented there was no obvious horizontal pleiotropy among the SNPs related to frailty ($p = 0.895$)
182 and MetS ($p = 0.520$), and the LOO analyses showed the bidirectional causal association between frailty
183 and MetS were not driven by a single SNP (**Supplementary Fig S1 and Table S1**).

184 Afterward, the MVMR was conducted to determine the robustness of this bidirectional causal relationship
185 after accounting for the confounding effects of BMI and PA. The results are detailed in **Supplementary**
186 **Table S2**. After adjusting for BMI, the IVW method indicated that genetically predicted frailty was still
187 associated with a 61.0% higher likelihood of developing MetS (OR: 1.610, 95% CI: 1.275-2.034, $p < 0.001$).
188 Conversely, individuals with MetS were found to be more fragile (beta: 0.171, 95% CI: 0.119-0.224, $p <$
189 0.001). The bidirectional causal association was confirmed by the MR-Egger, weighted median, and
190 MR-LASSO methods. Furthermore, this correlation persisted even after controlling for PA, which was
191 corroborated by the four methods.

192 3.2.2. Mediating role of mental disorders

193 By utilizing the two-step MR analyses, we assessed whether mental disorders could mediate the
194 bidirectional causality between frailty and MetS. The results are presented in **Fig 3** and **Supplementary**
195 **Table S3-S4**.

196 For the forward analyses, genetically predicted frailty was positively correlated with the risk the depression
197 (OR: 2.815, 95% CI: 1.639, 4.836, $p < 0.001$), SCZ (OR: 2.230, 95% CI: 1.093, 4.549, $p = 0.028$), and depressed
198 individuals have a higher likelihood to developing MetS (OR: 1.235, 95% CI: 1.099, 1.388, $p < 0.001$).

199 However, no other significant causal associations were discovered. Therefore, depression exerted a
200 mediation role in the causal effect of frailty and MetS.

201 In the reverse analyses, it was found that individuals with MetS were discovered were more likely to suffer
202 from depression (OR: 1.226, 95% CI: 1.117, 1.347, $p < 0.001$), but not SCZ and BIP. Besides, people with
203 depression (beta: 0.185, 95% CI: 0.144, 0.226, $p < 0.001$) and SCZ (beta: 0.015, 95% CI: 0.005, 0.024, $p =$
204 0.002) were more likely to be frail. Similarly, the causal effect of MetS on frailty was mediated by
205 depression.

206 **4. Discussion**

207 Our study investigated the genetic associations of MetS with frailty and mental disorders, along with the
208 causative relationship between frailty and MetS, and the mediating effects of mental disorders. Our
209 research furnished evidence of genetic correlations between MetS and frailty, depression, and SCZ.
210 Furthermore, we uncovered a bidirectional causality between frailty and MetS, with depression playing a
211 significant mediating role.

212 While Barzilay et al. found no association between MetS and incident frailty(18), most studies confirm a
213 significant link(5; 19). Meanwhile, a similar study by Jiahao Zhu et al. demonstrates the bidirectional causal
214 association of frailty with cardiometabolic diseases, including coronary artery disease, stroke, and type 2
215 diabetes(20). Nevertheless, MetS in the current study did not fully align with cardiometabolic diseases.

216 Collectively, frailty and MetS exhibit associations rooted in the various components of MetS, evidenced by
217 abdominal obesity(21), high blood pressure(22), remnant cholesterol(23), and low HDL-cholesterol(24). In
218 addition to the above factors, the U-shape association of serum glucose level and frailty was determined
219 in older adults without diabetes(25).

220 Contemporary researchers are increasingly delving into the molecular mechanisms underlying both frailty
221 and MetS, uncovering shared pathogenic pathways. One prominently explored commonality is insulin

222 resistance, recognized as a pivotal factor in both conditions. Emerging evidence underscores the pivotal
223 role of insulin-like growth factor (IGF) in the hypothalamic-pituitary axis(26), contributing to frailty
224 through reduced muscle protein synthesis, involving the Akt signaling pathway and AMP-activated protein
225 kinase(27). Meanwhile, insulin plays a crucial role in muscle protein synthesis and maintenance while
226 insulin resistance impaired relevant signaling pathways to reduce muscle protein synthesis and increase
227 the breakdown of muscle tissue, leading to the development of frailty. Therefore, insulin resistance as the
228 central feature of MetS is acknowledged as a precursor to frailty(26), prompting investigations into it as a
229 target for prevention(28).

230 Vitamin D (VD), essential for bone health and calcium metabolism, is correlated with frailty by tremendous
231 longitudinal studies and randomized controlled trials(29; 30). Besides, the VD/VD receptor axis regulate
232 biological processes including proteolysis, mitochondrial function, cellular senescence, and adiposity(31),
233 contributing to sarcopenic muscle atrophy and subsequent frailty. Furthermore, the relationship between
234 VD deficiency and MetS was approved by plenty of studies in adults and children, and one of the potential
235 mechanisms is the effect of VD on insulin secretion and sensitivity(32). VD could improve insulin resistance
236 and VD deficiency compromises the capacity of pancreatic β cells to convert pro-insulin into insulin, while
237 insulin serves as a vital factor in the prevention of MetS. Another recent plausible explanation is the gut
238 microbiota-bile acid axis possibly through the modulation of the PPAR signaling pathway, as evidenced to
239 mediate the relationship between plasma VD and MetS in 2966 Chinese participants with a 9-year
240 follow-up(33). Hence, VD emerges as a potential link between frailty and MetS.

241 Oxidative stress and inflammation play parallel roles in frailty and MetS through various aspects and
242 pathways. Oxidative stress is closely linked to aging while the most notable manifestation of aging is the
243 clinical condition of frailty. Both meta-analyses and mouse models(34) provided robust evidence of
244 oxidative stress and chronic inflammation as relevant biomarkers and precursors of frailty. Oxidative stress,
245 characterized by excessive reactive oxygen species production, oxidized lipids to produce lipid peroxides,

246 disrupted redox signaling and activated the apoptosis pathway. Moreover, oxidative stress affects insulin
247 metabolic signaling and promotes cardiovascular and renal inflammation and fibrosis, resulting in damage
248 to relevant organs and subsequent MetS(35). The NF- κ B signaling pathway, the major regulator of the
249 proinflammatory response, suppresses insulin metabolic signaling and promotes in establishment a
250 low-grade chronic inflammatory state, leading to subsequent metabolic damage(36).

251 In addition to the aforementioned explanations, our investigation extended to include depression, SCZ,
252 and BIP, aiming to scrutinize the mediating impact of these mental disorders. The results underscored a
253 significant mediation effect, particularly notable in the case of depression. Depression emerges as a
254 prevalent factor among individuals affected by frailty and MetS, and insulin resistance is implicated as a
255 crucial contributor to the intricate relationship between frailty, MetS, and the manifestation of depressive
256 symptoms. Supporting this exploration, a meta-analysis of 70 studies and over 240 million participants
257 elucidated a noteworthy positive association between the insulin resistance index and acute depression,
258 and this index remained unaltered even when depression symptoms were alleviated(37). Delving deeper
259 into the molecular mechanisms, insulin resistance was identified as a key player in altering central
260 dopaminergic signaling, particularly in the ventral tegmental area associated with reward behavior(38),
261 contributing to the development of anhedonia and depression. Specifically, insulin resistance was found to
262 diminish the synthesis and reuptake of dopamine through attenuated AKT signaling pathways, while the
263 dysregulation of dopamine intensively promotes the pathophysiologic development of depression(39).

264 Our study had several noteworthy strengths. Firstly, we utilized genetic variants from large-scale GWASs,
265 which enhanced the statistical power to detect genetic associations. Additionally, by using genetic variants
266 as instruments, Mendelian randomization (MR) could provide valid causal inference, overcoming the
267 limitations of conventional observational studies, such as confounding bias and reverse causality.
268 Moreover, our study focused on mental disorders and highlighted the mediating role of depression in the
269 relationship between frailty and MetS.

270 While our study has these advantages, it should be considered within the context of its limitations. Firstly,
271 the participants in this research were all of European ancestry, which may limit the generalizability of our
272 findings. Secondly, the different methods used to assess frailty may also influence the results. The frailty
273 index (FI) was another frequently used tool to evaluate an individual's frailty status, and the recent GWAS
274 has discovered 14 loci related to FL(40). We did not use this index out of concern for biased causal
275 inference, as high blood pressure, lipid disorder, and diabetes were important scoring items for FL and, at
276 the same time, the main diagnostic criteria for MetS.

277 **5. Conclusion**

278 Our research provided evidence of genetic correlations between MetS and frailty, depression, and SCZ.
279 Additionally, we discovered a bidirectional causality between frailty and MetS, with depression playing a
280 significant mediating role.

281 **6. Declarations**

282 **Ethics approval**

283 The data sets used in this research were publicly available from the published articles, and the ethics
284 approvals were obtained in the original research.

285 **Author contributions**

286 **Ming-Gang Deng:** Conceptualization, Methodology, Data Curation, Formal Analysis, and Writing -
287 Original Draft; **Kai Wang:** Writing - Original Draft; **Jia-Qi Nie, Fang Liu, and Yuehui Liang:** Writing -
288 Review & Editing; **Jiewei Liu:** Conceptualization, and Formal Analysis.

289 **Acknowledgments**

290 None.

291 **Funding**

292 The authors received no external funding.

293 **Competing interests**

294 The authors declare that they have no competing interests

295 **Data and code availability**

296 The datasets utilized in this study are accessible on the *IEU OpenGWAS project* ([https://gwas.mrcieu](https://gwas.mrcieu.ac.uk/)
297 [u.ac.uk/](https://gwas.mrcieu.ac.uk/)), *figshare* (<https://figshare.com/s/6683396c68807fe4e729>), *PGC* ([https://pgc.unc.edu/for-resear](https://pgc.unc.edu/for-researchers/download-results/)
298 [chers/download-results/](https://pgc.unc.edu/for-researchers/download-results/)), and *iPSYCH* (<https://ipsych.dk/en/research/downloads>).

299 Additionally, the code employed in this study is also available: *ldscr* ([https://github.com/mglev1n/lds](https://github.com/mglev1n/ldscr)
300 [cr](https://github.com/mglev1n/ldscr)), *SUPERGNOVA* (<https://github.com/qlu-lab/SUPERGNOVA>), *TwoSampleMR* ([https://mrcieu.github.io](https://mrcieu.github.io/TwoSampleMR/)
301 [/TwoSampleMR/](https://mrcieu.github.io/TwoSampleMR/)), and *MendelianRandomization* (<https://github.com/cran/MendelianRandomization>).

302 **7. Reference**

- 303 1. Hoogendijk EO, Afilalo J, Ensrud KE, Kowal P, Onder G, Fried LP. Frailty: implications for clinical practice
304 and public health. *Lancet* (London, England) 2019;394:1365-1375
- 305 2. Ward DD, Ranson JM, Wallace LMK, Llewellyn DJ, Rockwood K. Frailty, lifestyle, genetics and dementia
306 risk. *Journal of neurology, neurosurgery, and psychiatry* 2022;93:343-350
- 307 3. Hajek A, Bock JO, Saum KU, Matschinger H, Brenner H, Holleczeck B, Haefeli WE, Heider D, König HH.
308 Frailty and healthcare costs-longitudinal results of a prospective cohort study. *Age and ageing*
309 2018;47:233-241
- 310 4. Alberti KG, Eckel RH, Grundy SM, Zimmet PZ, Cleeman JI, Donato KA, Fruchart JC, James WP, Loria CM,
311 Smith SC, Jr. Harmonizing the metabolic syndrome: a joint interim statement of the International Diabetes
312 Federation Task Force on Epidemiology and Prevention; National Heart, Lung, and Blood Institute;
313 American Heart Association; World Heart Federation; International Atherosclerosis Society; and
314 International Association for the Study of Obesity. *Circulation* 2009;120:1640-1645
- 315 5. Jiang X, Xu X, Ding L, Lu J, Zhu H, Zhao K, Zhu S, Xu Q. The association between metabolic syndrome and
316 presence of frailty: a systematic review and meta-analysis. *European geriatric medicine* 2022;13:1047-1056

- 317 6. Pérez-Tasigchana RF, León-Muñoz LM, Lopez-Garcia E, Gutierrez-Fisac JL, Laclaustra M, Rodríguez-Artalejo F, Guallar-Castillón P. Metabolic syndrome and insulin resistance are associated with frailty in
318 older adults: a prospective cohort study. *Age and ageing* 2017;46:807-812
- 320 7. McCarthy K, Laird E, O'Halloran AM, Fallon P, Ortuño RR, Kenny RA. Association between metabolic
321 syndrome and risk of both prevalent and incident frailty in older adults: Findings from The Irish
322 Longitudinal Study on Ageing (TILDA). *Experimental gerontology* 2023;172:112056
- 323 8. Sen ZD, Danyeli LV, Woelfer M, Lamers F, Wagner G, Sobanski T, Walter M. Linking atypical depression
324 and insulin resistance-related disorders via low-grade chronic inflammation: Integrating the phenotypic,
325 molecular and neuroanatomical dimensions. *Brain, behavior, and immunity* 2021;93:335-352
- 326 9. Perry BI, Burgess S, Jones HJ, Zammit S, Uptegrove R, Mason AM, Day FR, Langenberg C, Wareham NJ,
327 Jones PB, Khandaker GM. The potential shared role of inflammation in insulin resistance and schizophrenia:
328 A bidirectional two-sample mendelian randomization study. *PLoS medicine* 2021;18:e1003455
- 329 10. Miola A, Alvarez-Villalobos NA, Ruiz-Hernandez FG, De Filippis E, Veldic M, Prieto ML, Singh B, Sanchez
330 Ruiz JA, Nunez NA, Resendez MG, Romo-Nava F, McElroy SL, Ozerdem A, Biernacka JM, Frye MA,
331 Cuellar-Barboza AB. Insulin resistance in bipolar disorder: A systematic review of illness course and clinical
332 correlates. *Journal of affective disorders* 2023;334:1-11
- 333 11. Deng MG, Liu F, Liang Y, Wang K, Nie JQ, Liu J. Association between frailty and depression: A
334 bidirectional Mendelian randomization study. *Science advances* 2023;9:eadi3902
- 335 12. Deng MG, Cui HT, Nie JQ, Liang Y, Chai C. Genetic association between circulating selenium level and
336 the risk of schizophrenia in the European population: A two-sample Mendelian randomization study.
337 *Frontiers in nutrition* 2022;9:969887
- 338 13. Ye Y, Noche RB, Szejko N, Both CP, Acosta JN, Leasure AC, Brown SC, Sheth KN, Gill TM, Zhao H, Falcone
339 GJ. A genome-wide association study of frailty identifies significant genetic correlation with
340 neuropsychiatric, cardiovascular, and inflammation pathways. *GeroScience* 2023;45:2511-2523
- 341 14. van Walree ES, Jansen IE, Bell NY, Savage JE, de Leeuw C, Nieuwdorp M, van der Sluis S, Posthuma D.
342 Disentangling Genetic Risks for Metabolic Syndrome. *Diabetes* 2022;71:2447-2457
- 343 15. Als TD, Kurki MI, Grove J, Voloudakis G, Therrien K, Tasanko E, Nielsen TT, Naamanka J, Veerapen K,
344 Levey DF, Bendl J, Bybjerg-Grauholm J, Zeng B, Demontis D, Rosengren A, Athanasiadis G, Bækved-Hansen
345 M, Qvist P, Bragi Walters G, Thorgeirsson T, Stefánsson H, Musliner KL, Rajagopal VM, Farajzadeh L,
346 Thirstrup J, Vilhjálmsson BJ, McGrath JJ, Mattheisen M, Meier S, Agerbo E, Stefánsson K, Nordentoft M,
15

347 Werge T, Hougaard DM, Mortensen PB, Stein MB, Gelernter J, Hovatta I, Roussos P, Daly MJ, Mors O, Palotie
348 A, Børglum AD. Depression pathophysiology, risk prediction of recurrence and comorbid psychiatric
349 disorders using genome-wide analyses. *Nature medicine* 2023;29:1832-1844
350 16. Trubetskov V, Pardiñas AF, Qi T, Panagiotaropoulou G, Awasthi S, Bigdeli TB, Bryois J, Chen CY, Dennison
351 CA, Hall LS, Lam M, Watanabe K, Frei O, Ge T, Harwood JC, Koopmans F, Magnusson S, Richards AL,
352 Sidorenko J, Wu Y, Zeng J, Grove J, Kim M, Li Z, Voloudakis G, Zhang W, Adams M, Agartz I, Atkinson EG,
353 Agerbo E, Al Eissa M, Albus M, Alexander M, Alizadeh BZ, Alptekin K, Als TD, Amin F, Arolt V, Arrojo M,
354 Athanasiu L, Azevedo MH, Bacanu SA, Bass NJ, Begemann M, Belliveau RA, Bene J, Benyamin B, Bergen SE,
355 Blasi G, Bobes J, Bonassi S, Braun A, Bressan RA, Bromet EJ, Bruggeman R, Buckley PF, Buckner RL,
356 Bybjerg-Grauholm J, Cahn W, Cairns MJ, Calkins ME, Carr VJ, Castle D, Catts SV, Chambert KD, Chan RCK,
357 Chaumette B, Cheng W, Cheung EFC, Chong SA, Cohen D, Consoli A, Cordeiro Q, Costas J, Curtis C,
358 Davidson M, Davis KL, de Haan L, Degenhardt F, DeLisi LE, Demontis D, Dickerson F, Dikeos D, Dinan T,
359 Djurovic S, Duan J, Ducci G, Dudbridge F, Eriksson JG, Fañanás L, Faraone SV, Fiorentino A, Forstner A, Frank
360 J, Freimer NB, Fromer M, Frustaci A, Gadelha A, Genovese G, Gershon ES, Giannitelli M, Giegling I,
361 Giusti-Rodríguez P, Godard S, Goldstein JI, González Peñas J, González-Pinto A, Gopal S, Gratten J, Green
362 MF, Greenwood TA, Guillin O, Gülöksüz S, Gur RE, Gur RC, Gutiérrez B, Hahn E, Hakonarson H, Haroutunian
363 V, Hartmann AM, Harvey C, Hayward C, Henskens FA, Herms S, Hoffmann P, Howrigan DP, Ikeda M, Iyegbe
364 C, Joa I, Julià A, Kähler AK, Kam-Thong T, Kamatani Y, Karachanak-Yankova S, Kebir O, Keller MC, Kelly BJ,
365 Khrunin A, Kim SW, Klovins J, Kondratiev N, Konte B, Kraft J, Kubo M, Kučinskis V, Kučinskiene ZA,
366 Kusumawardhani A, Kuzelova-Ptackova H, Landi S, Lazzeroni LC, Lee PH, Legge SE, Lehrer DS, Lencer R,
367 Lerer B, Li M, Lieberman J, Light GA, Limborska S, Liu CM, Lönnqvist J, Loughland CM, Lubinski J, Luykx JJ,
368 Lynham A, Macek M, Jr., Mackinnon A, Magnusson PKE, Maher BS, Maier W, Malaspina D, Mallet J, Marder
369 SR, Marsal S, Martin AR, Martorell L, Mattheisen M, McCarley RW, McDonald C, McGrath JJ, Medeiros H,
370 Meier S, Meleghe B, Melle I, Meshulam-Gately RI, Metspalu A, Michie PT, Milani L, Milanova V, Mitjans M,
371 Molden E, Molina E, Molto MD, Mondelli V, Moreno C, Morley CP, Muntané G, Murphy KC, Myin-Germeys I,
372 Nenadić I, Nestadt G, Nikitina-Zake L, Noto C, Nuechterlein KH, O'Brien NL, O'Neill FA, Oh SY, Olincy A,
373 Ota VK, Pantelis C, Papadimitriou GN, Parellada M, Paunio T, Pellegrino R, Periyasamy S, Perkins DO,
374 Pfuhlmann B, Pietiläinen O, Pimm J, Porteous D, Powell J, Quattrone D, Quedsted D, Radant AD, Rampino A,
375 Rapaport MH, Rautanen A, Reichenberg A, Roe C, Roffman JL, Roth J, Rothermundt M, Rutten BPF,
376 Saker-Delye S, Salomaa V, Sanjuan J, Santoro ML, Savitz A, Schall U, Scott RJ, Seidman LJ, Sharp SI, Shi J,

377 Siever LJ, Sigurdsson E, Sim K, Skarabis N, Slominsky P, So HC, Sobell JL, Söderman E, Stain HJ, Steen NE,
378 Steixner-Kumar AA, Stögmänn E, Stone WS, Straub RE, Streit F, Strengman E, Stroup TS, Subramaniam M,
379 Sugar CA, Suvisaari J, Svrakic DM, Swerdlow NR, Szatkiewicz JP, Ta TMT, Takahashi A, Terao C, Thibaut F,
380 Toncheva D, Tooney PA, Torretta S, Tosato S, Tura GB, Turetsky BI, Üçok A, Vaaler A, van Amelsvoort T, van
381 Winkel R, Veijola J, Waddington J, Walter H, Waterreus A, Webb BT, Weiser M, Williams NM, Witt SH,
382 Wormley BK, Wu JQ, Xu Z, Yolken R, Zai CC, Zhou W, Zhu F, Zimprich F, Atbaşoğlu EC, Ayub M, Benner C,
383 Bertolino A, Black DW, Bray NJ, Breen G, Buccola NG, Byerley WF, Chen WJ, Cloninger CR, Crespo-Facorro B,
384 Donohoe G, Freedman R, Galletly C, Gandal MJ, Gennarelli M, Hougaard DM, Hwu HG, Jablensky AV,
385 McCarroll SA, Moran JL, Mors O, Mortensen PB, Müller-Myhsok B, Neil AL, Nordentoft M, Pato MT,
386 Petryshen TL, Pirinen M, Pulver AE, Schulze TG, Silverman JM, Smoller JW, Stahl EA, Tsuang DW, Vilella E,
387 Wang SH, Xu S, Adolfsson R, Arango C, Baune BT, Belangero SI, Børghlum AD, Braff D, Bramon E, Buxbaum
388 JD, Champion D, Cervilla JA, Cichon S, Collier DA, Corvin A, Curtis D, Forti MD, Domenici E, Ehrenreich H,
389 Escott-Price V, Esko T, Fanous AH, Gareeva A, Gawlik M, Gejman PV, Gill M, Glatt SJ, Golimbet V, Hong KS,
390 Hultman CM, Hyman SE, Iwata N, Jönsson EG, Kahn RS, Kennedy JL, Khusnutdinova E, Kirov G, Knowles JA,
391 Krebs MO, Laurent-Levinson C, Lee J, Lencz T, Levinson DF, Li QS, Liu J, Malhotra AK, Malhotra D, McIntosh
392 A, McQuillin A, Menezes PR, Morgan VA, Morris DW, Mowry BJ, Murray RM, Nimgaonkar V, Nöthen MM,
393 Ophoff RA, Paciga SA, Palotie A, Pato CN, Qin S, Rietschel M, Riley BP, Rivera M, Rujescu D, Saka MC,
394 Sanders AR, Schwab SG, Serretti A, Sham PC, Shi Y, St Clair D, Stefánsson H, Stefansson K, Tsuang MT, van
395 Os J, Vawter MP, Weinberger DR, Werge T, Wildenauer DB, Yu X, Yue W, Holmans PA, Pocklington AJ,
396 Roussos P, Vassos E, Verhage M, Visscher PM, Yang J, Posthuma D, Andreassen OA, Kendler KS, Owen MJ,
397 Wray NR, Daly MJ, Huang H, Neale BM, Sullivan PF, Ripke S, Walters JTR, O'Donovan MC. Mapping
398 genomic loci implicates genes and synaptic biology in schizophrenia. *Nature* 2022;604:502-508
399 17. Mullins N, Forstner AJ, O'Connell KS, Coombes B, Coleman JRI, Qiao Z, Als TD, Bigdeli TB, Børte S,
400 Bryois J, Charney AW, Drange OK, Gandal MJ, Hagenaars SP, Ikeda M, Kamitaki N, Kim M, Krebs K,
401 Panagiotaropoulou G, Schilder BM, Sloofman LG, Steinberg S, Trubetskoy V, Winsvold BS, Won HH,
402 Abramova L, Adorjan K, Agerbo E, Al Eissa M, Albani D, Alliey-Rodriguez N, Anjorin A, Antilla V, Antoniou A,
403 Awasthi S, Baek JH, Bækvad-Hansen M, Bass N, Bauer M, Beins EC, Bergen SE, Birner A, Bøcker Pedersen C,
404 Bøen E, Boks MP, Bosch R, Brum M, Brumpton BM, Brunkhorst-Kanaan N, Budde M, Bybjerg-Grauholm J,
405 Byerley W, Cairns M, Casas M, Cervantes P, Clarke TK, Cruceanu C, Cuellar-Barboza A, Cunningham J, Curtis
406 D, Czerski PM, Dale AM, Dalkner N, David FS, Degenhardt F, Djurovic S, Dobbyn AL, Douzenis A,
17

407 Elvsåshagen T, Escott-Price V, Ferrier IN, Fiorentino A, Foroud TM, Forty L, Frank J, Frei O, Freimer NB, Frisé
408 n L, Gade K, Garnham J, Gelernter J, Giørtz Pedersen M, Gizer IR, Gordon SD, Gordon-Smith K, Greenwood
409 TA, Grove J, Guzman-Parra J, Ha K, Haraldsson M, Hautzinger M, Heilbronner U, Hellgren D, Herms S,
410 Hoffmann P, Holmans PA, Huckins L, Jamain S, Johnson JS, Kalman JL, Kamatani Y, Kennedy JL,
411 Kittel-Schneider S, Knowles JA, Kogevinas M, Koromina M, Kranz TM, Kranzler HR, Kubo M, Kupka R,
412 Kushner SA, Lavebratt C, Lawrence J, Leber M, Lee HJ, Lee PH, Levy SE, Lewis C, Liao C, Lucae S, Lundberg M,
413 MacIntyre DJ, Magnusson SH, Maier W, Maihofer A, Malaspina D, Maratou E, Martinsson L, Mattheisen M,
414 McCarroll SA, McGregor NW, McGuffin P, McKay JD, Medeiros H, Medland SE, Millischer V, Montgomery
415 GW, Moran JL, Morris DW, Mühleisen TW, O'Brien N, O'Donovan C, Olde Loohuis LM, Oruc L, Papiol S,
416 Pardiñas AF, Perry A, Pfennig A, Porichi E, Potash JB, Queded D, Raj T, Rapaport MH, DePaulo JR, Regeer EJ,
417 Rice JP, Rivas F, Rivera M, Roth J, Roussos P, Ruderfer DM, Sánchez-Mora C, Schulte EC, Senner F, Sharp S,
418 Shilling PD, Sigurdsson E, Sirignano L, Slaney C, Smeland OB, Smith DJ, Sobell JL, Sørholm Hansen C, Soler
419 Artigas M, Spijker AT, Stein DJ, Strauss JS, Świątkowska B, Terao C, Thorgeirsson TE, Toma C, Tooney P,
420 Tsermpini EE, Vawter MP, Vedder H, Walters JTR, Witt SH, Xi S, Xu W, Yang JMK, Young AH, Young H, Zandi
421 PP, Zhou H, Zillich L, Adolfsson R, Agartz I, Alda M, Alfredsson L, Babadjanova G, Backlund L, Baune BT,
422 Bellivier F, Bengesser S, Berrettini WH, Blackwood DHR, Boehnke M, Børglum AD, Breen G, Carr VJ, Catts S,
423 Corvin A, Craddock N, Dannlowski U, Dikeos D, Esko T, Etain B, Ferentinos P, Frye M, Fullerton JM, Gawlik M,
424 Gershon ES, Goes FS, Green MJ, Grigoriou-Serbanescu M, Hauser J, Henskens F, Hillert J, Hong KS,
425 Hougaard DM, Hultman CM, Hveem K, Iwata N, Jablensky AV, Jones I, Jones LA, Kahn RS, Kelsoe JR, Kirov G,
426 Landén M, Leboyer M, Lewis CM, Li QS, Lissowska J, Lochner C, Loughland C, Martin NG, Mathews CA,
427 Mayoral F, McElroy SL, McIntosh AM, McMahon FJ, Melle I, Michie P, Milani L, Mitchell PB, Morken G, Mors
428 O, Mortensen PB, Mowry B, Müller-Myhsok B, Myers RM, Neale BM, Nievergelt CM, Nordentoft M, Nöthen
429 MM, O'Donovan MC, Oedegaard KJ, Olsson T, Owen MJ, Paciga SA, Pantelis C, Pato C, Pato MT, Patrinis GP,
430 Perlis RH, Posthuma D, Ramos-Quiroga JA, Reif A, Reininghaus EZ, Ribasés M, Rietschel M, Ripke S,
431 Rouleau GA, Saito T, Schall U, Schalling M, Schofield PR, Schulze TG, Scott LJ, Scott RJ, Serretti A, Shannon
432 Weickert C, Smoller JW, Stefansson H, Stefansson K, Stordal E, Streit F, Sullivan PF, Turecki G, Vaaler AE,
433 Vieta E, Vincent JB, Waldman ID, Weickert TW, Werge T, Wray NR, Zwart JA, Biernacka JM, Nurnberger JI,
434 Cichon S, Edenberg HJ, Stahl EA, McQuillin A, Di Florio A, Ophoff RA, Andreassen OA. Genome-wide
435 association study of more than 40,000 bipolar disorder cases provides new insights into the underlying
436 biology. *Nature genetics* 2021;53:817-829

- 437 18. Barzilay JI, Blaum C, Moore T, Xue QL, Hirsch CH, Walston JD, Fried LP. Insulin resistance and
438 inflammation as precursors of frailty: the Cardiovascular Health Study. Archives of internal medicine
439 2007;167:635-641
- 440 19. Dao HHH, Burns MJ, Kha R, Chow CK, Nguyen TN. The Relationship between Metabolic Syndrome and
441 Frailty in Older People: A Systematic Review and Meta-Analysis. Geriatrics (Basel, Switzerland) 2022;7
- 442 20. Zhu J, Zhou D, Wang J, Yang Y, Chen D, He F, Li Y. Frailty and cardiometabolic diseases: a bidirectional
443 Mendelian randomisation study. Age and ageing 2022;51
- 444 21. Yuan L, Chang M, Wang J. Abdominal obesity, body mass index and the risk of frailty in
445 community-dwelling older adults: a systematic review and meta-analysis. Age and ageing
446 2021;50:1118-1128
- 447 22. Liu P, Li Y, Zhang Y, Mesbah SE, Ji T, Ma L. Frailty and hypertension in older adults: current
448 understanding and future perspectives. Hypertension research : official journal of the Japanese Society of
449 Hypertension 2020;43:1352-1360
- 450 23. Hu Y, Wang X, Lin L, Huan J, Li Y, Zhang L, Li Y. Association of remnant cholesterol with frailty: findings
451 from observational and Mendelian randomization analyses. Lipids in health and disease 2023;22:115
- 452 24. Bastos-Barbosa RG, Ferriolli E, Coelho EB, Moriguti JC, Nobre F, Lima NK. Association of frailty
453 syndrome in the elderly with higher blood pressure and other cardiovascular risk factors. American journal
454 of hypertension 2012;25:1156-1161
- 455 25. Zaslavsky O, Walker RL, Crane PK, Gray SL, Larson EB. Glucose Levels and Risk of Frailty. The journals of
456 gerontology Series A, Biological sciences and medical sciences 2016;71:1223-1229
- 457 26. Leng SX, Hung W, Cappola AR, Yu Q, Xue QL, Fried LP. White blood cell counts, insulin-like growth
458 factor-1 levels, and frailty in community-dwelling older women. The journals of gerontology Series A,
459 Biological sciences and medical sciences 2009;64:499-502
- 460 27. Cleasby ME, Jamieson PM, Atherton PJ. Insulin resistance and sarcopenia: mechanistic links between
461 common co-morbidities. The Journal of endocrinology 2016;229:R67-81
- 462 28. Sundell J. Resistance Training Is an Effective Tool against Metabolic and Frailty Syndromes. Advances in
463 preventive medicine 2011;2011:984683
- 464 29. Dai M, Yue J, Zhang J, Wang H, Wu C. Functional dentition is a modifier of the association between
465 vitamin D and the frailty index among Chinese older adults: a population-based longitudinal study. BMC
466 geriatrics 2022;22:159

- 467 30. Bo Y, Liu C, Ji Z, Yang R, An Q, Zhang X, You J, Duan D, Sun Y, Zhu Y, Cui H, Lu Q. A high whey protein,
468 vitamin D and E supplement preserves muscle mass, strength, and quality of life in sarcopenic older adults:
469 A double-blind randomized controlled trial. *Clinical nutrition (Edinburgh, Scotland)* 2019;38:159-164
- 470 31. Bollen SE, Bass JJ, Fujita S, Wilkinson D, Hewison M, Atherton PJ. The Vitamin D/Vitamin D receptor
471 (VDR) axis in muscle atrophy and sarcopenia. *Cellular signalling* 2022;96:110355
- 472 32. Xia Y, Yu Y, Zhao Y, Deng Z, Zhang L, Liang G. Insight into the Interaction Mechanism of Vitamin D
473 against Metabolic Syndrome: A Meta-Analysis and In Silico Study. *Foods (Basel, Switzerland)* 2023;12
- 474 33. Lin HR, Xu F, Chen D, Xie K, Yang Y, Hu W, Li BY, Jiang Z, Liang Y, Tang XY, Zheng JS, Chen YM. The gut
475 microbiota-bile acid axis mediates the beneficial associations between plasma vitamin D and metabolic
476 syndrome in Chinese adults: A prospective study. *Clinical nutrition (Edinburgh, Scotland)* 2023;42:887-898
- 477 34. Álvarez-Satta M, Berna-Erro A, Carrasco-Garcia E, Alberro A, Saenz-Antoñanzas A, Vergara I, Otaegui D,
478 Matheu A. Relevance of oxidative stress and inflammation in frailty based on human studies and mouse
479 models. *Aging* 2020;12:9982-9999
- 480 35. Masenga SK, Kabwe LS, Chakulya M, Kirabo A. Mechanisms of Oxidative Stress in Metabolic Syndrome.
481 *International journal of molecular sciences* 2023;24
- 482 36. Catrysse L, van Loo G. Inflammation and the Metabolic Syndrome: The Tissue-Specific Functions of NF-
483 κ B. *Trends in cell biology* 2017;27:417-429
- 484 37. Fernandes BS, Salagre E, Enduru N, Grande I, Vieta E, Zhao Z. Insulin resistance in depression: A large
485 meta-analysis of metabolic parameters and variation. *Neuroscience and biobehavioral reviews*
486 2022;139:104758
- 487 38. Gruber J, Hanssen R, Qubad M, Bouzouina A, Schack V, Sochor H, Schiweck C, Aichholzer M, Matura S,
488 Slattery DA, Zopf Y, Borgland SL, Reif A, Thanarajah SE. Impact of insulin and insulin resistance on brain
489 dopamine signalling and reward processing - An underexplored mechanism in the pathophysiology of
490 depression? *Neuroscience and biobehavioral reviews* 2023;149:105179
- 491 39. Grace AA. Dysregulation of the dopamine system in the pathophysiology of schizophrenia and
492 depression. *Nature reviews Neuroscience* 2016;17:524-532
- 493 40. Atkins JL, Jylhävä J, Pedersen NL, Magnusson PK, Lu Y, Wang Y, Hägg S, Melzer D, Williams DM, Pilling
494 LC. A genome-wide association study of the frailty index highlights brain pathways in ageing. *Aging cell*
495 2021;20:e13459

496

497 **Table 1. Univariate causal inference between frailty and metabolic syndrome**

Exposure	Outcome	Method	beta / OR (95% CI)	<i>p</i> -value	Cochran's Q	<i>p</i> -value for heterogeneity* or pleiotropy†
Frailty	MetS	IVW	2.773 (1.455, 5.286)	0.002	581.184	<0.001
		MR-Egger	2.337 (0.179, 30.447)	0.517		0.895
		Weighted Median	2.065 (1.692, 2.519)	<0.001		
		MR-LASSO	1.994 (1.618, 2.457)	<0.001		
MetS	Frailty	IVW	0.211 (0.18, 0.241)	<0.001	649.002	<0.001
		MR-Egger	0.185 (0.100, 0.270)	<0.001		0.520
		Weighted Median	0.209 (0.173, 0.244)	<0.001		
		MR-LASSO	0.232 (0.214, 0.251)	<0.001		

498 **Abbreviations:** OR, odds ratio; MetS, metabolic syndrome; IVW, inverse variance weighted.

499 **p*-value for heterogeneity based on Cochran's Q statistic.

500 †*p*-value or pleiotropy based on MR-Egger regression intercept.

501 **Figure Legend**

502

503 **Fig 1. Study overview.**

504 **Abbreviations:** MetS, metabolic syndrome; SCZ, schizophrenia; BIP, bipolar disorder; SNPs, single
505 nucleotide polymorphisms; BMI, body mass index; PA, physical activity.

506

507 **Fig 2. The results of local genetic correlation.** The red dotted line represents the corrected significance
508 threshold, the purple points indicate negatively correlated regions, and the black points were positively
509 correlated regions.

510 **Abbreviations:** MetS, metabolic syndrome; SCZ, schizophrenia; BIP, bipolar disorder

511

512 **Fig 3. Depression mediated the bidirectional causality between frailty and metabolic syndrome.**

Genetic correlation

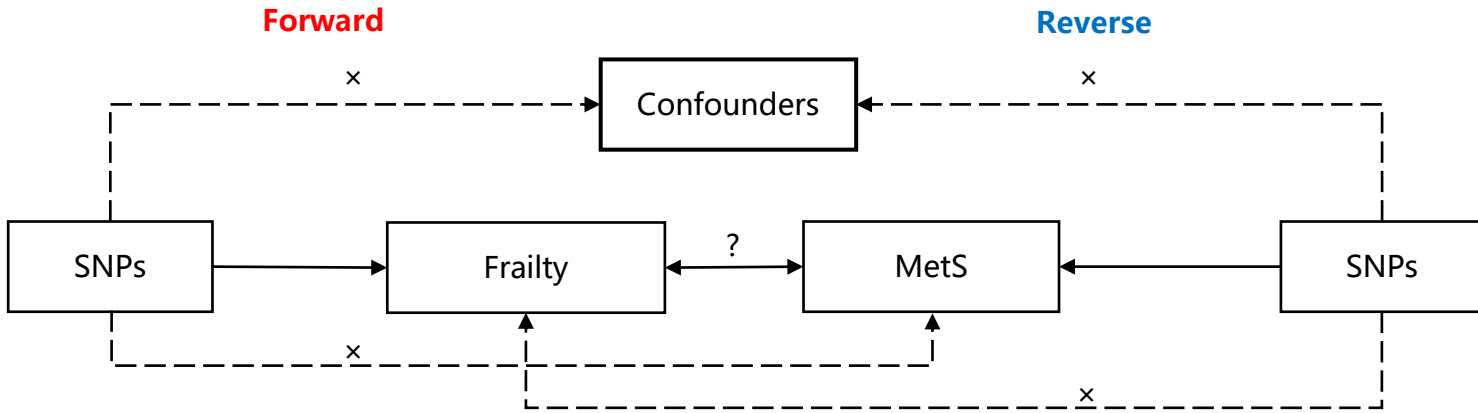
Global genetic correlation

MetS versus Frailty: ↗
MetS versus Depression: ↗
MetS versus SCZ: ↘
MetS versus BIP: ×

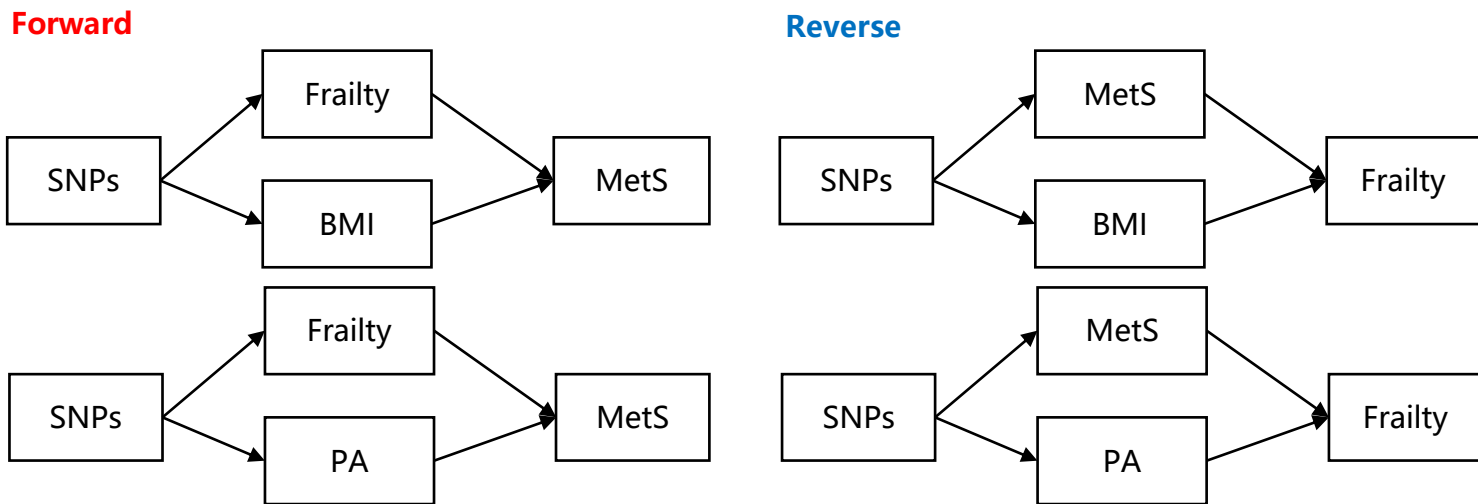
Local genetic correlation

MetS versus Frailty: 18 regions
MetS versus Depression: 3 regions
MetS versus SCZ: 5 regions
MetS versus BIP: 0 region

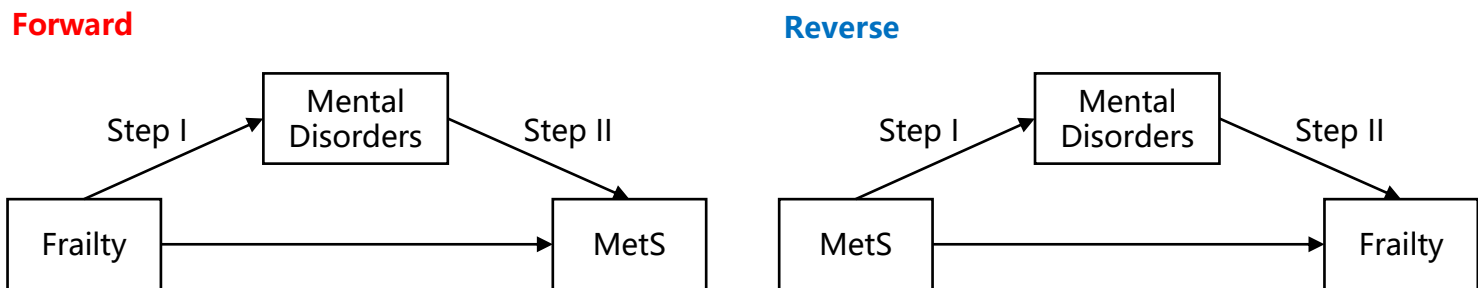
Univariate Mendelian Randomization



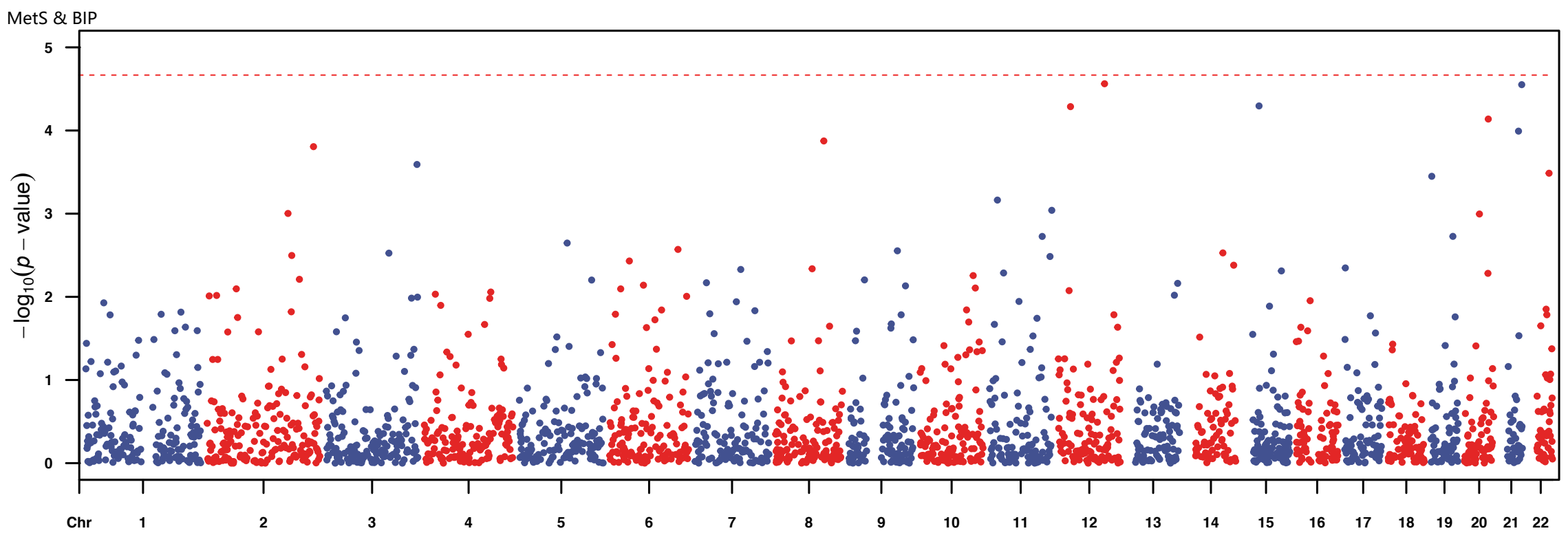
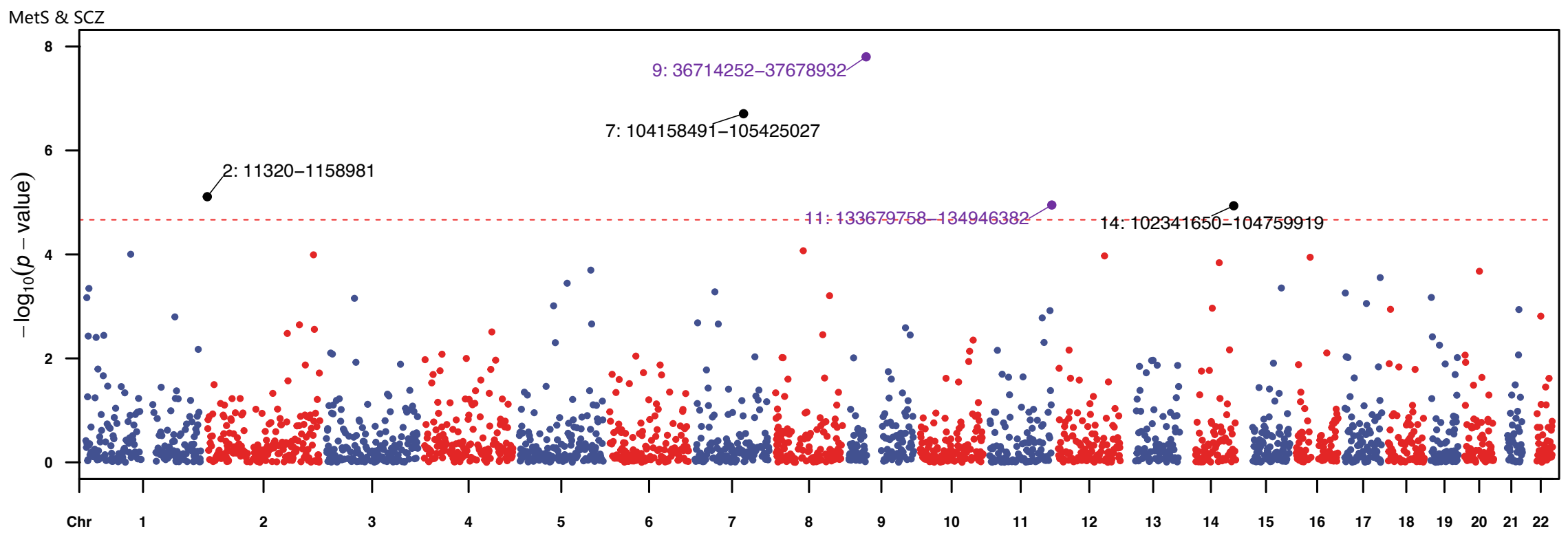
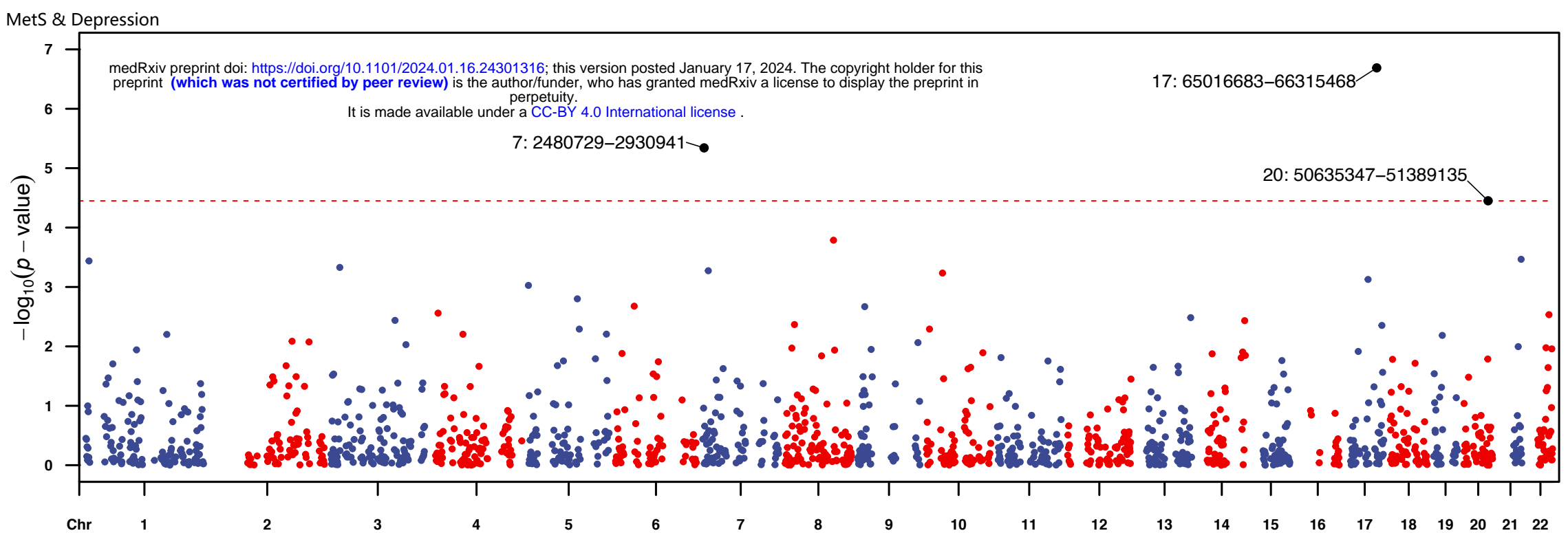
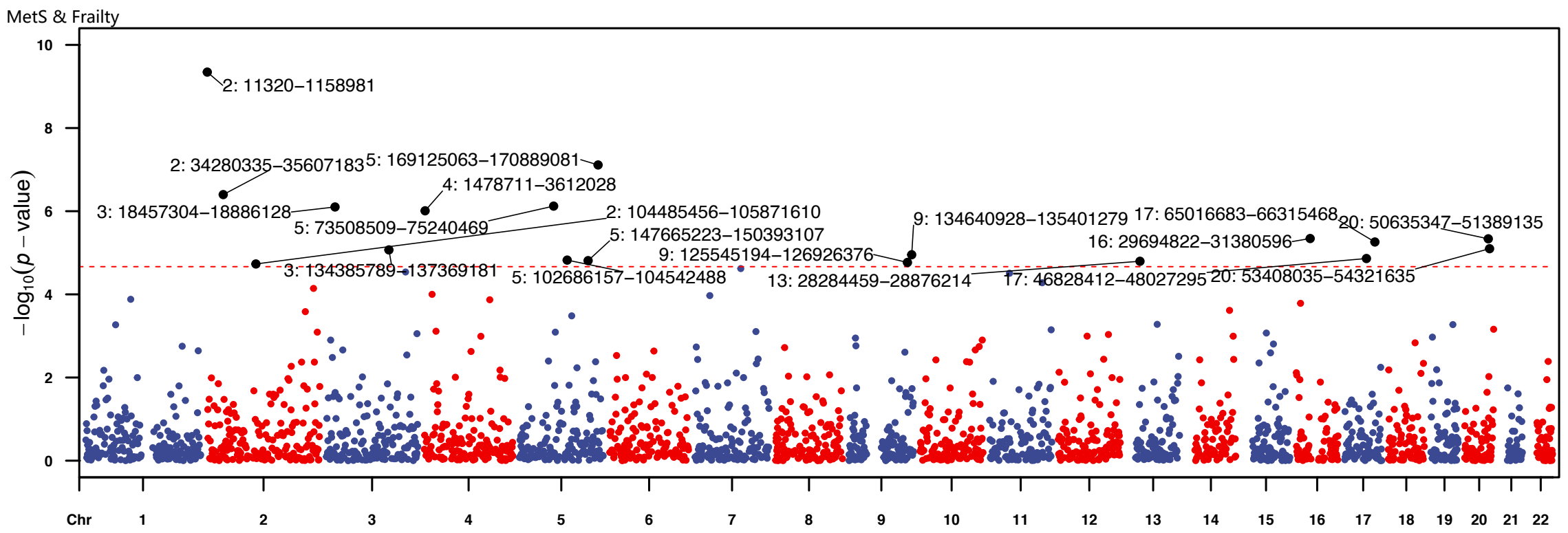
Multivariate Mendelian Randomization



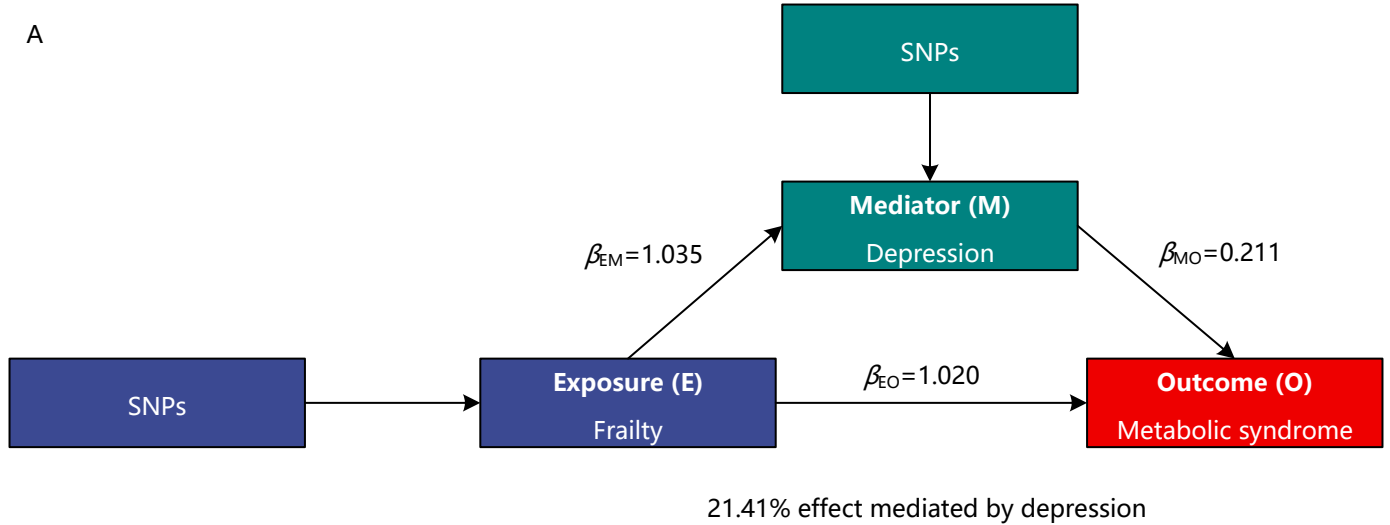
Mediation Mendelian Randomization



Mendelian Randomization



A



B

