

Heterogeneity in deaths of despair: excess mortality in the US during the Covid-19 pandemic

Sasikiran Kandula^{1*}, Katherine M. Keyes², Jeffrey Shaman^{1,3}

¹Department of Environmental Health Sciences, Columbia University, New York, NY.

²Department of Epidemiology, Columbia University, New York, NY.

³Columbia Climate School, Columbia University, New York, NY.

*Corresponding author:

1 **Abstract**

2 The impact of Covid-19 on mortality includes both direct effects of the virus and indirect effects
3 mediated through other causal pathways. In the United States, the indirect effects, particularly from
4 suicides, overdoses and alcohol-induced causes (i.e. deaths of despair) (1) are understudied. Here,
5 we estimated excess non-Covid deaths and deaths of despair, in the US overall, in each state and in
6 72 demographic strata. Nationally, 114,230 (127,597) excess non-Covid deaths, 19,074 (33,559)
7 excess poisoning deaths and 8,746 (13,771) excess alcohol-induced deaths were estimated during
8 2020 (2021). Excess poisoning and alcohol-induced mortality were highest among the 35-44 and the
9 55-64 year groups, respectively. The Black and the American Indian/Alaskan Native populations had
10 the highest excess poisoning and alcohol-induced mortality, respectively. Fewer suicides than
11 expected occurred nationally, but excess suicides were estimated among Black youth. These findings
12 suggest that additional resources need to be mobilized to limit increases in deaths of despair.

13 Introduction

14 The Covid-19 pandemic resulted in societal disruptions throughout the world. Assessment of the
15 public health impacts of the pandemic must recognize both the direct effects of Covid-19 (morbidity
16 and mortality following infection including long-Covid (2)), and its indirect effects including
17 increased drug overdoses and impact on population mental health due to isolation and stress.
18 Measures of morbidity from Covid-19 are sensitive to the healthcare system's capacity to test and
19 care for infected individuals. In the United States, as in many other countries, the healthcare system
20 was reportedly overwhelmed during Covid-19 surges, introducing inaccuracies in case and
21 hospitalization surveillance data. On the other hand, mortality reporting systems are more resilient
22 to measurement and surveillance variance and are arguably a more reliable gauge of the *direct*, albeit
23 more severe, effects of the pandemic. The mechanisms and pathways through which the pandemic
24 has indirectly impacted population health are complex, but as is the case with direct effects, mortality
25 is one of the more reliable measures of indirect effects of the pandemic.

26 Excess mortality, the difference between observed deaths from all causes during the pandemic and
27 deaths expected in a counterfactual scenario in which a pandemic did not occur and mortality trends
28 before the pandemic continued, encompasses both the direct and indirect effects of the pandemic
29 and is a more comprehensive measure of its impact on public health. As an extension, the difference
30 between expected and observed deaths from all causes other than Covid-19 can be interpreted as a
31 measure of the indirect effect of the pandemic on mortality. Admittedly, deaths certified to be from
32 causes other than Covid-19 can potentially include deaths from Covid-19 infections that were
33 recorded as due to a different underlying cause in the absence of a confirmatory laboratory test for
34 SARS-CoV-2 (3, 4). The prevalence of such mislabeled deaths and their variability over the course of
35 the pandemic, across states and demographic groups is not quite known, although 91% of Covid-
36 associated deaths (includes deaths for which Covid-19 infection was the presumed or probable
37 contributing cause), were certified with Covid-19 as the underlying cause of death (5). With this
38 caveat, excess deaths from non-Covid causes can be interpreted as a measure of indirect effects of
39 the pandemic.

40 Multiple estimates of all-cause excess mortality in the US have been previously reported (6-15).
41 These include estimates for the US overall, estimates at different geographical resolutions such as
42 census regions or states, as well as for different racial and ethnic groups. In a few cases, excess deaths
43 from specific causes and disease categories, as well as non-Covid causes, have also been reported (6,
44 11, 16).

45 In this study, using an extensive well-resolved historical record of mortality in the US, we estimated
46 excess deaths from non-Covid causes to complement previously published estimates. A more
47 important contribution, and one previously unreported to our knowledge, is a quantification of the
48 pandemic's impact on deaths of despair. Deaths of despair is a convenience label introduced by Case
49 and Deaton and includes deaths from suicide, drug overdose and alcohol use (1, 17, 18). Case and
50 Deaton have proposed that an underlying set of social and economic changes in the US — loss of
51 meaningful work, shift in economic and political power from labor to capital, relaxation of social
52 norms related to marriage, a diminished role of religion, inefficiencies in the healthcare system —
53 are common factors impacting the rise in mortality from these causes, especially among middle-aged
54 White men without a college degree.

55 Between 1999 and 2019, the age-adjusted mortality rate from poisoning in the US increased from 6.1
56 per 100,000 population to 21.6 (19, 20). Over the same period, suicides increased from 10.5 to 13.9,
57 and alcohol-induced deaths among those 25 years or older increased from 10.9 to 16.0 (19, 21, 22).
58 These increasing trends are anomalous as all-cause mortality during the same period has decreased
59 from 875.6 to 715.2, as did mortality from some of the major leading causes of deaths such as heart
60 disease (266.5 to 161.5), cancer (200.8 to 146.2), and stroke (61.6 to 37) (19).

61 With the emergence of the Covid-19 pandemic, there was widespread concern that the economic and
62 psychological impacts of the pandemic would exacerbate these distal underlying drivers of deaths of
63 despair. Large scale surveys conducted during the initial months of the pandemic indicated a general
64 deterioration of population mental health with a significant proportion of those surveyed reporting
65 depression, anxiety and thoughts of suicide (23). Similarly, the pandemic was expected to severely
66 impact those with substance use disorders, either through disruptions in access to treatment or
67 harm-reduction services, loss of contact with trusted drug sources of consistent potency, and
68 relapses from pandemic related economic stress (24). Increased alcohol consumption as a coping
69 mechanism was also hypothesized (25). Given the evidence of a concentration of deaths of despair
70 among the middle-aged White non-Hispanic population before the pandemic, we examined whether
71 excess mortality from deaths of despair during the pandemic had disproportionate representation
72 from specific demographic groups.

73 With the help of a detailed dataset of all recorded deaths in the US between 2003 and 2019, we
74 generated estimates of expected all-cause deaths, as well as deaths expected from poisoning, alcohol-
75 induced causes and suicide in each county in the US during 2020 and 2021 (see *Methods*).
76 Additionally, in order to capture group-specific temporal trends and spatial patterns leading up to

77 the pandemic, we built separate models for 72 population strata (9 10-year age groups, 4 racial and
78 2 sex groups). These together enabled the generation of county- and strata-specific expected death
79 estimates in each year.

80 By comparing the expected deaths with observed deaths, we were able to estimate excess mortality
81 during the pandemic. Specifically, by comparing all-cause expected deaths with all deaths from
82 causes other than Covid-19, we estimated the overall indirect effect of the pandemic on mortality.
83 Similarly, by comparing expected deaths from each of suicide, poisoning and alcohol-induced causes
84 with their respective observed deaths, we estimated the effect of the pandemic on each of these
85 causes. While these estimates at the national level are informative, to further understand the
86 differential impact of the pandemic by location and demographic group, we analyzed the variability
87 in excess deaths across states, and by population age, race and sex..

88 **Results**

89 *National excess mortality estimates from causes other than Covid-19*

90 We have previously reported median all-cause excess deaths of 463,187 (95% uncertainty interval
91 (UI): 426,139 – 497,526) in 2020 and 544,105 (95% UI: 492,202 – 592,959) in 2021 [in review,
92 provided as supplementary text]. Excess deaths from causes other than Covid-19 were estimated to
93 be 114,230 (95% UI: 57,999– 167,080) and 127,597 (95% UI: 75,709 – 176,447) during 2020 and
94 2021 respectively, with the corresponding excess mortality rates per 100,000 population at 36.8
95 (95% UI: 18.7 - 53.9) and 41.1 (95% UI: 24.4 – 56. 9).

96 Excess mortality rates from non-Covid causes among 35-44 year, 45-54 year and 55-64 year old
97 populations were comparable to each other and to the national rate, and were higher among the 65-
98 74 year age group (58.7 per 100,000 population) (Figure 1). Higher rates were observed in 2021 than
99 in 2020 for all four of these age groups, with the 65-74 year group showing the largest increase and
100 a near doubling of excess mortality (129.2; 95% UI: 69-189). Excess mortality rates among those
101 under 15 years of age and over 75 years were not statistically significant, i.e. after excluding deaths
102 certified to be from Covid-19, the observed deaths from all other causes were not statistically
103 different from expected deaths from all other causes.

104 Age-standardized excess mortality rates among women were also not statistically significant in
105 either year. In contrast, among men, 46.3 excess non-Covid deaths per 100,000 population during
106 2020 and 59.5 during 2021 were estimated to have occurred. Further disaggregating by sex and age
107 together showed statistically significant excess deaths among both men and women between 25 and

108 64 years of age, and higher excess mortality rates among men than in women in these age groups and
109 during both years. The age distribution of excess deaths among men and women was similar in each
110 year (Figure 2).

111 Similarly, when stratified by racial groups, statistically significant excess deaths were estimated
112 among the Black population (104.5 during 2020 and 89.2 during 2021) and among the Asian/PI
113 population during 2020 (26.8). Further disaggregating by race and age together showed excess
114 deaths in the White, Black and AI/AN populations between 15 and 64 years (Figure 3). Among the
115 25-34 year and 35-44 year age groups, the AI/AN population had the largest non-Covid excess deaths
116 of the four race groups.

117 *National excess mortality estimates from poisoning*

118 There were a reported 91,648 (106,484) deaths from poisoning in 2020 (2021)(26). Of these, 19,074
119 (95% UI: 14,980 – 23,200) during 2020 and 33,559 (95% UI: 27,232 – 39,607) during 2021 were
120 estimated to be excess deaths, at a rate of 6.2 (95% UI: 4.8 – 7.5) per 100,000 population and 10.5
121 (95% UI: 8.8 – 12.8), respectively (Figure 1). Note that these deaths were in excess of those expected
122 from a continuation of the upward trend of poisoning deaths before the pandemic.

123 The age profile during both years was similar, with larger excess deaths estimated in the four 10-
124 year age groups between 25-64 years. In both years, the 35-44 year age group had the highest
125 mortality rate at nearly twice the national rate (12.5 in 2020 and 22.3 in 2021). Rates increased
126 between 2020 and 2021 in all four of these age groups, with the largest percentage increase among
127 the 55-64 year old group (6.1 in 2020 and 14.5 in 2021).

128 Age-standardized excess mortality rates from poisoning among men were nearly three times that of
129 women in both years (2.9 among women and 9.6 among men in 2020; 5.6 and 16.4 respectively in
130 2021). Among both men and women, the 35-44 year population was estimated to have the highest
131 excess mortality (7 among women and 18.2 among men in 2020; 12.6 and 32.3 respectively in 2021),
132 with a greater separation from the remaining age groups in 2021 than in 2020 (Figure 2).

133 Age-standardized excess mortality rates stratified by race group showed the Black population to have
134 the highest rates among the four race groups during both years (10.5 in 2020 and 19.2 in 2021),
135 followed by the AI/AN population (7.4 and 13.3); in both cases rates nearly doubled between 2020
136 and 2021. Higher excess rates in the Black and AI/AN populations relative to the White population
137 were consistent in all groups under 65 years, and were particularly elevated during 2021 in the 55-

138 64 year (17.7 among White, 25.9 among AI/AN and 54.2 among Black populations) and 45-54 year
139 age groups (20.9 among White, 30.5 among AI/AN and 40.4 among Black populations) (Figure 3).

140 *National excess mortality estimates from alcohol-induced causes*

141 There were a reported 49,057 (54,255) alcohol-induced deaths in 2020 (2021) (26). Of these, 8,746
142 (95% UI: 6,978-10,266) deaths during 2020 and 13,771 (95% UI: 11,724 – 15,632) deaths during
143 2021 were estimated to be excess deaths, at a rate of 2.8 (95% UI: 2.3 – 3.3) per 100,000 in 2020 and
144 4.4 (95% UI: 3.8 – 5.0) in 2021 (Figure 1). As with excess mortality from poisoning, a similar age
145 profile of excess deaths from alcohol-induced causes was estimated during both 2020 and 2021;
146 however, the distribution skewed older than in poisoning, with a majority of excess deaths estimated
147 to be in the four 10-year age groups between 35 and 74 years.

148 The difference between men and women was also smaller than was estimated for poisoning, but men
149 still had more than twice as many excess deaths as women (1.8 in 2020 and 2.6 in 2021 among
150 women; 4.4 in 2020 and 6.5 in 2021 among men). This difference was also consistent when
151 disaggregated by age group and sex during both 2020 and 2021 (Figure 2).

152 Unlike poisoning, excess mortality among the Black population was comparable to that of the White
153 population in both years, but excess mortality among the AI/AN population was particularly
154 pronounced at nearly three times the national average in 2020, and four times the national average
155 in 2021 (9.1 in 2020 and 18.2 in 2021). Furthermore, while in 2020 excess deaths among AI/AN were
156 largely limited to the 25-44 year old population, in 2021 these extended to the older 45-84 year
157 groups (Figure 3).

158 *National excess mortality estimates from suicides*

159 In contrast to poisoning and alcohol-induced deaths, deaths from suicide were estimated to have
160 decreased during the pandemic nationally. In 2020, 2,450 (95% UI: 1,427 to 3,567) fewer deaths from
161 suicide were observed than were expected from pre-pandemic trends, at a rate of -0.79 (95% UI: -
162 1.15 to -0.46) per 100,000 population. During 2021, the observed national suicide rate was not
163 statistically different from expected rates. For reference, there were a reported 45,977 (48,178)
164 suicide deaths in 2020 (2021) (26).

165 Disaggregating by age showed a statistically significant decrease in suicide rates during 2020 among
166 35-74 year age groups, with the largest decrease in the 55-64 year age group (-2.7 per 100,000).
167 Suicide rates were higher in 2021 than in 2020 nationally, but a statistically significant difference

168 was estimated for only two age groups: a deficit of 2.4 per 100,000 among the 55-64 year group, and
169 an excess of 1.4 per 100,000 among the 25-34 year group (Figure 1).

170 Age-standardized excess rates for suicides following disaggregation by sex or race were not
171 statistically significant. Disaggregating by age and sex together, however, showed significant deficits
172 among middle-aged women (35-64 years) and 55-64 year men (Figure S1). Statistically significant
173 excess mortality was also estimated when disaggregated by age and race together, with deficits in
174 the above age groups largely limited to the White population, and excess suicides estimated among
175 the younger Black population (1.8 in 2020 and 2.9 in 2021 among 15-24 year group; 2.5 in 2021
176 among 25-34 year group).

177 *Excess mortality estimates for states*

178 We further estimated excess mortality rates from all causes other than Covid-19, as well as deaths of
179 despair, in the 50 states and the District of Columbia. Statistically significant excess mortality from
180 non-Covid causes were estimated in 37 states during 2020, and in 39 states during 2021. Of the 31
181 states with statistically significant estimates in both years, an increase between 2020 and 2021 was
182 estimated in 21 states.

183 The same five states — Mississippi (108.3 excess deaths per 100,000 population in 2020; 116.8 in
184 2021), West Virginia (106; 180.4), Kentucky (83.1; 108.2), New Mexico (81.6; 122.3) and Tennessee
185 (80.5; 109) — were estimated to have the five highest non-Covid excess deaths in each of 2020 and
186 2021; in all 5 states, the excess mortality rate was higher in 2021 than in 2020 (Figures 4, 5). The
187 Appalachian states of West Virginia, Kentucky and Tennessee were also estimated to have high excess
188 mortality from poisoning, while New Mexico had large excess mortality from alcohol-induced causes.
189 In Mississippi, excess mortality from both poisoning and alcohol-induced causes were not high
190 relative to other states, suggesting contributions from causes other than those that were the focus
191 here.

192 Statistically significant excess mortality from poisoning was observed in two-thirds of the states
193 during both years, with nearly all of these states indicating an increase in 2021 from 2020. In addition
194 to the Appalachian cluster noted above, the District of Columbia (25.7 in 2020; 29.3 in 2021),
195 Louisiana (14.4; 27.1) and four states in the northeast — Delaware (16.1; 23.2), Maine (13.7; 22.2),
196 Connecticut (14.4; 19.5) and Vermont (11.6; 21.9) — were estimated to have experienced large
197 excess deaths from poisoning during both years.

198 While the magnitude of excess mortality from alcohol-induced causes was smaller than from
199 poisoning, these were more widespread with excess mortality indicated in 46 states during both
200 years. In addition to New Mexico noted above, a cluster of states in the Mountain region — South
201 Dakota (15.1 in 2020; 28.1 in 2021), Wyoming (19.1; 19.3), Montana (7.9; 15.2) and North Dakota (8;
202 11.9) — along with Alaska (10.2; 21) had high excess mortality rates from alcohol-induced causes.
203 Particularly large increases between 2020 and 2021 were noted in South Dakota and Alaska (Figure
204 4).

205 As previously noted, fewer suicide deaths than expected occurred during 2020 in the US nationally.
206 Disaggregating by state showed statistically significant deficits in 15 states, with the largest deficits
207 in the District of Columbia (-3.1), Rhode Island (-2.9), Florida (-2.8) and Nevada (-2.4). Observed
208 suicide rates were not statistically different from expected rates in 33 states.

209 On the other hand, while nationally expected suicides were in line with observed suicides during
210 2021, at the state-level excess deaths were estimated for 16 states. Wyoming was a clear outlier with
211 the highest excess suicide deaths in both years (6.6 in 2020; 8.1 in 2021). Montana (7.1), Alaska (6.9),
212 Vermont (6.4) and South Dakota (5), which were identified as having had high excess deaths from
213 alcohol-induced causes, were also estimated to have high excess suicides during 2021. Besides
214 Wyoming, Iowa (3; 2.8) and Oklahoma (2.2; 2.4) were the only states estimated to have excess
215 suicides in both years. Six states with sizeable urban populations — California, Maryland,
216 Massachusetts, New York, New Jersey and North Carolina — had fewer than expected suicides in both
217 years.

218 **Discussion**

219 Our estimates show that mortality burden was an additional 32.6% and 30.6% above deaths reported
220 with Covid-19 as underlying cause, during 2020 and 2021 respectively. While a majority of Covid-19
221 deaths have occurred in the 75+ population (58.8% in 2020 and 43.1% in 2021), indirect deaths were
222 largely limited to those under 75 years. The Black and AI/AN populations were reported to have
223 greater mortality from Covid-19 than the White population, and the indirect effects in these two
224 groups were also estimated to be larger than in the White population. Geographical variability of
225 Covid-19 deaths and non-Covid excess deaths was also observed (not reported); these findings
226 together indicate that assessments of the pandemic's overall mortality burden would be incomplete
227 without the inclusion of excess non-Covid deaths.

228 Our results also show that nationally excess deaths from suicide, poisoning and alcohol-induced
229 deaths together accounted for 25% (36%) of excess non-Covid deaths during 2020 (2021), indicating
230 a sizeable contribution from causes other than deaths of despair. Limited access to emergency
231 services following a heart attack (27) or stroke (28), changes in health-seeking behavior to avoid
232 infection in clinical settings (29, 30), changes in patient care protocols to prioritize Covid-19 cases
233 (leading to fewer referrals for suspected cancer (31), for example) could have contributed to excess
234 mortality. Of note, excess non-Covid mortality was particularly elevated among the 65-74 year
235 population, who are more likely to have chronic conditions requiring regular access to care than
236 younger age groups and for whom the above factors could have played a greater role. Additionally,
237 excess non-Covid mortality was larger among the Black population than in all other racial groups,
238 and the extent to which this is due to differences in the prevalence of chronic conditions and the
239 uneven indirect socioeconomic impact of the pandemic among racial groups remains to be
240 investigated.

241 Poisoning deaths remained relatively stable between 2017 and 2019 at nearly 70,000 deaths per
242 year. This followed a 10% year-to-year increase between 2014 and 2016 primarily due to increased
243 availability of fentanyl and other synthetic opioids. Usage patterns of illicit drugs have changed
244 periodically over the last two decades with a transition from prescription opioids to heroin to
245 synthetic opioids, and more recently towards (meth)amphetamines (20), with consequent effects on
246 overdose deaths. It is difficult to disentangle the extent to which the excess poisoning deaths in 2020
247 and 2021 were due to another shift in usage driven by supply-side dynamics which would have
248 occurred even without a pandemic, or an indirect effect of the pandemic, or more likely, a
249 compounded effect of the two.

250 However, while poisoning deaths before the pandemic were predominantly among the middle-aged
251 White population, excess poisoning deaths during the pandemic were estimated to be at a higher rate
252 in younger age groups (25-45 years), and higher among the Black population than the White
253 population, indicating a possible shift in overdoses to a younger non-White population during the
254 first two years of the pandemic.

255 Most states implemented policies to mitigate anticipated spikes in overdoses during the pandemic,
256 and the excess mortality estimates reported here can help evaluate the efficacy of these state-specific
257 measures, especially when large differences are observed between adjacent states. For example,
258 West Virginia, the District of Columbia and Louisiana had higher excess mortality from poisoning
259 relative to their neighbors and are suitable candidates for a policy comparison. Efforts to reduce

260 overdose through increased naloxone availability, reducing high-risk opioid prescribing, and
261 supporting and building treatment capacity for substance use disorders are all evidenced-based
262 approaches for addressing the continued drug poisoning epidemic. Such efforts may need to be
263 enhanced and further supported through funding and policy change especially in these states.

264 Unlike excess poisoning mortality, the age distribution of excess alcohol-induced mortality during
265 the pandemic was similar to the age distribution of alcohol-induced mortality during the pandemic,
266 and no shift in burden towards younger populations was detected. However, there was a possible
267 proportional shift in alcohol-induced mortality from the White population to both AI/AN and Black
268 populations during 2021. Excessive alcohol use was estimated to have accounted for 1 in 8 deaths in
269 the US population aged 20 to 64 during the 5-year period leading up to the pandemic (32) and further
270 increased by nearly 25% during the first year of the Covid-19 pandemic (33). Together with excess
271 estimates reported here, these results suggest substantial burden of alcohol-induced deaths in
272 middle-age and older populations and need for alcohol regulations to reduce mortality.

273 In light of mental health surveys conducted during the initial months of the pandemic on suicidal
274 thoughts, plans or attempts which indicated a possible uptick in suicides, the decrease in observed
275 suicide rates during 2020 was a positive public health outcome. However, caution is required in
276 interpreting the deficit suicide estimates reported here. Out-of-sample validation of our model's
277 expected mortality estimates during pre-pandemic years had a positive bias (see *Methods*). Although
278 this would lead to a more conservative excess death estimates for poisoning and alcohol-induced
279 causes, due to the decreasing trend in suicide from 2018, this bias could have contributed to an
280 erroneous estimation of a deficit in suicides during 2020. On the other hand, and for the same reason,
281 excess suicides in the 15-24 year Black population in 2020 and the 15-34 year Black population in
282 2021 are likely to be underestimates and additional analysis is necessary to understand the
283 underlying causes for the increase in suicides among Black youth (Figure S1).

284 The causal pathways for fewer suicides than expected during the pandemic in states with large urban
285 centers is unclear, but a combination of the 'pulling together' effect (34) and the alleviation of the
286 impact of a strained social safety net through pandemic stimulus checks, eviction moratoriums and
287 related measures may be at play.

288 Limitations of this study include the use of provisional estimates of mortality for 2021 which could
289 have a larger effect on minority groups (see Appendix Text 1); an inability to age-standardize excess
290 mortality rates at the state-level; inaccuracies in cause of death certification both for Covid-19 and
291 poisoning; concerns about intentionality certification of overdose deaths (35, 36); use of 2020

292 population estimates for 2021 without adjusting for the high mortality in 2020 (particularly
293 impacting the elderly); and, large uncertainty bounds in model estimates for strata with small and
294 sparse population.

295 Overall, we estimate that over 70,000 excess deaths of despair occurred during the first two years of
296 the Covid-19 pandemic in the United States. Poisonings and alcohol-induced deaths as well as excess
297 mortality from non-Covid causes exhibited considerable heterogeneity by demographic
298 characteristics and across states. These findings highlight the indirect health burden of the pandemic,
299 the need for further study of these outcomes and more targeted interventions to limit mortality.

300 **Materials and Methods**

301 *Mortality*

302 All-cause deaths for years 2003-2020 were obtained from a detailed mortality dataset from the US
303 National Vital Statistics System, along with decedent age at time of death, race, sex, and county of
304 residence (19). From these records, county- and strata-specific annual death counts were computed,
305 where a strata was defined by a combination of decedent age, race and sex. 9 age groups (5-14 years,
306 15-24, ..., 75-84 years, 85+ years), 4 racial groups (White, Black, American Indian/Alaskan Native
307 (AI/AN) and Asian/Pacific Islander (Asian/PI)) and two sex groups (Male and Female) were used for
308 a total of 72 strata. Annual county-level mortality rates (deaths per 100,000 population), were
309 calculated with annual strata-specific county population estimates from the Bridged-Race
310 Intercensal (2003-2009), decennial census (2010) and Postcensal (2011-2020) datasets (37, 38).

311 Cause-specific mortality from Covid-19, suicides, poisoning and alcohol-induced deaths were
312 identified using *International Classification of Diseases-10 (ICD-10)* (39, 40) underlying cause of death
313 codes (Table S1), and aggregated by county and demographic strata.

314 As detailed mortality data were not available for 2021 at the time this analysis was undertaken,
315 provisional death counts and rates (not stratified) were retrieved from the Multiple Cause of Death
316 public interface on CDC WONDER (26). The interface suppressed counties with fewer than 10 deaths
317 resulting in the suppression of 14% of counties for Covid-19, 68% of counties for suicides and
318 alcohol-induced deaths, and 59% of counties for poisoning. Consequently, estimation of excess
319 deaths (difference from observed) was not possible at the county-level in 2021, and we limit to
320 reporting estimates for states and the US overall.

321 *Bayesian models of expected deaths*

322 To estimate expected all-cause deaths, we trained 72 strata-specific models using annual county-
 323 level deaths for the population in each strata between 2003 and 2019. Analogously, expected cause-
 324 specific mortality was estimated by training the models with annual cause-specific deaths. For
 325 simplicity, we limit following description to all-cause deaths.

326 Let y_{tsk} denote the number of all-cause deaths during year t in county s among the population in the
 327 k^{th} strata, defined by a combination of age, race and sex of the decedent; P_{tsk} and r_{tsk} the population
 328 and risk of k^{th} strata respectively. Under the assumption of a Poisson distribution for y_{tsk} , risk is
 329 modeled as:

$$330 \quad y_{tsk} = \text{Poisson}(r_{tsk}P_{tsk})$$

$$331 \quad \log(r_{tsk}) = \beta_{0t} + b_s + \alpha_{ts}$$

332 Here, β_{0t} is the time specific intercept calculated as $\beta_{0t} = \beta_0 + \epsilon_t$, β_0 representing the global
 333 intercept. ϵ_t , the random effect representing the deviation of each year from β_0 , was modeled as a
 334 first-order random walk process with hyperparameter τ_ϵ (as described below):

$$335 \quad \epsilon_t | \epsilon_{t-1} \sim \text{Normal}(\epsilon_{t-1}, \tau_\epsilon^{-1})$$

336 The Besag-York-Mollie (41) model was used to model the spatial random effect b_s as

$$337 \quad b_s = \frac{1}{\sqrt{\tau_b}} (\sqrt{1-\phi}v_s^* + \sqrt{\phi}u_s^*)$$

338 where v_s^* and u_s^* represent standardized (variance equal to 1) unstructured random effect (v_s) and
 339 spatially structured effect (u_s), respectively; $v_s \sim \text{Normal}(0, \tau_v^{-1})$ and

$$340 \quad u_s | u_i \sim \text{Normal}\left(\frac{1}{|D_s|} \sum_{i \in D_s} u_i, \frac{\tau_s^{-1}}{|D_s|}\right)$$

341 Here, D_s denotes the set of neighboring counties of county s , $|D_s|$ the number of neighboring counties,
 342 and ϕ a mixing parameter ($0 \leq \phi \leq 1$) controlling the proportion of marginal variance explained
 343 by the structured effect. α_{ts} denotes a space-time interaction modeled using independent and
 344 identically distributed Normal prior as $\alpha_{st} \sim \text{Normal}(0, \tau_{st}^{-1})$.

345 Penalizing complexity (PC) priors were specified for hyperparameters τ_ϵ , τ_b , τ_s , ϕ and τ_{st} (42). To
 346 impose an upper bound on spatial relative risk based only on structured or unstructured variation at
 347 $\exp(2)$, the prior for $\sigma_b = \sqrt{1/\tau_b}$ was specified as $Pr(\sigma_b > 1) = 0.01$ (43, 44). For mixing parameter
 348 ϕ , as the relative contribution of the unstructured or structured effects to b is uncertain, a broad prior

349 was specified with $Pr(\phi < 0.5) = 0.5$. Priors for all other hyperparameters are identical to that of
350 τ_b . Prior for the fixed effect β_0 was specified with a minimally informative Normal distribution.

351 *Posterior estimates and aggregation*

352 To get estimates of expected deaths for each of 2020 and 2021 from each of the k models, Monte Carlo
353 simulations were generated and 1000 random samples were drawn from the joint posterior
354 distribution:

$$355 \quad p(y_{t'sk}|\mathbf{O}) = \int p(y_{t'sk}|\theta)p(\theta|\mathbf{O}) d\theta$$

356 where θ is the (hyper) parameter vector $(\beta_0, u_s, v_s, \tau_\epsilon, \tau_b, \tau_s, \phi$ and $\tau_{st})$, and \mathbf{O} the observed data
357 through 2019.

358 The Integrated Nested Laplace Approximation (INLA) approach, as implemented in the *INLA* package
359 (45, 46) in R (47), was used for Bayesian inference. To obtain posterior distributions of expected
360 deaths for US nationally posterior distributions of all 72 models were aggregated. To obtain posterior
361 distributions for a state, posterior distributions from all 72 models for the counties in the state were
362 aggregated. To obtain estimates for a specific population subgroup (age, race or sex), relevant subset
363 of the k models was identified, and posterior distributions from this subset were aggregated.
364 Location- and strata-specific estimates were obtained analogously with a selection of relevant
365 counties and models. For example, to estimate expected deaths among the White population in New
366 York, the 18 models (9 age and 2 sex groups) in which race of the decedent was *White* were identified,
367 and posterior distributions of expected deaths in only the counties in New York were summed.

368 Distributions of all-cause *excess* deaths were calculated as the difference between observed deaths
369 and posterior distributions of expected all-cause deaths. Distributions of excess deaths from causes
370 other than Covid-19 (*non-Covid*) were calculated by further subtracting Covid-19 deaths (deaths
371 explicitly coded with U07.1 as the underlying cause). Mean and 95% uncertainty bounds were
372 computed from the posterior distributions. An estimate was considered to be significant if the lower
373 (2.5%) and upper (97.5%) bounds had the same sign.

374 Distributions of cause-specific excess deaths were calculated as the difference between observed
375 deaths from the specific cause and posterior distributions of expected cause-specific deaths. To
376 reiterate, the posterior distributions of each of the expected all-cause deaths, and expected suicides,
377 poisoning and alcohol-induced deaths were from 4 distinct sets of 72 county-level strata-specific

378 models, each set of models trained on annual observed deaths for the specific cause during 2003-
379 2019.

380 To adjust for differences in age profiles of the different population sub-groups, the race and sex
381 disaggregated excess mortality rates for the US nationally, as well as the state-level rates, were age-
382 standardized using the direct method (48, 49), with national age distribution as the reference
383 population (see Appendix Text 2).

384 *Temporal cross validation*

385 As a temporal cross-validation exercise, for each of the years 2010-2019, we trained the models with
386 data up to (and not including) the candidate year and projected deaths one year ahead. A mismatch
387 between expected and observed deaths does not necessarily indicate sub-optimal quality of the
388 models, but rather possible excess deaths from other factors. Inspecting the concurrence between
389 the observed and predicted deaths could help detect consistent biases in model estimates.

390 Figures S3 a-d show uncertainty bounds of the expected mortality rates against observed rates for
391 all cause deaths, poisoning, alcohol-induced deaths and suicides respectively, in the US overall, and
392 disaggregated by age, race and sex. National expected death estimates were within the 95%
393 uncertainty bounds in 7 of the 10 years. Cause-specific expected death estimates were biased higher,
394 suggesting the excess death estimates for 2020 and 2021, are potentially underestimates. Similar
395 patterns were observed in estimates of all-cause deaths for men and women and in 3 of the 4 race
396 groups. Estimates for AI/AN were biased higher in a majority of the years, possibly due to the
397 relatively sparse distribution of AI/AN population but this remains to be investigated. Cause-specific
398 race and sex disaggregated estimates also at times showed positive bias.

399 See Appendix Text 3 for a comparison of excess non-Covid mortality estimates from the method
400 described here and those estimated by the National Center for Health Statistics using a different
401 method.

402 **Acknowledgements**

403 This work is supported by a grant from the US National Institute of Mental Health (R01-MH121410),
404 a contract from the US Centers for Disease Control and Prevention (75D30122C14289), and a gift
405 from the Morris-Singer Foundation.

406 **Competing Interests**

407 JS and Columbia University declare partial ownership of SK Analytics. JS consulted for BNI. KMK
408 and SK have no competing interests.

409 **Data and code availability**

410 Excess mortality estimates from this study for 2020 and 2021, and a data dictionary are included as
411 supporting information.

412 **References**

- 413 1. Case A & Deaton A (2021) *Deaths of Despair and the Future of Capitalism* (Princeton University Press).
- 414 2. Nalbandian A, *et al.* (2021) Post-acute COVID-19 syndrome. *Nature medicine* 27(4):601-615.
- 415 3. Gill JR & DeJoseph ME (2020) The importance of proper death certification during the COVID-19
- 416 pandemic. *JAMA* 324(1):27-28.
- 417 4. National_Center_for_Health_Statistics (2020) Guidance for certifying deaths due to COVID-19.
- 418 (Hyattsville, MD).
- 419 5. Ahmad FB, Cisewski JA, Miniño A, & Anderson RN (2021) Provisional mortality data — United States,
- 420 2020. *Morbidity and Mortality Weekly Report* 70(14):519.
- 421 6. Cronin CJ & Evans WN (2021) Excess mortality from COVID and non-COVID causes in minority
- 422 populations. *Proceedings of the National Academy of Sciences* 118(39):e2101386118.
- 423 7. Faust JS, *et al.* (2021) All-cause excess mortality and COVID-19–related mortality among US adults aged
- 424 25-44 years, March-July 2020. *JAMA* 325(8):785-787.
- 425 8. Riley AR, *et al.* (2021) Excess mortality among Latino people in California during the COVID-19
- 426 pandemic. *SSM - Population Health* 15:100860.
- 427 9. Rossen LM, *et al.* (2021) Disparities in excess mortality associated with COVID-19—United States, 2020.
- 428 *Morbidity Mortality Weekly Report* 70(33):1114.
- 429 10. Rossen LM, Branum AM, Ahmad FB, Sutton P, & Anderson RN (2020) Excess deaths associated with
- 430 COVID-19, by age and race and ethnicity—United States, January 26–October 3, 2020. *Morbidity*
- 431 *Mortality Weekly Report* 69(42):1522.
- 432 11. Ruhm CJ (2022) Excess deaths in the United States during the first year of COVID-19. *Preventive Medicine*
- 433 162:107174.
- 434 12. Weinberger DM, *et al.* (2020) Estimation of excess deaths associated with the COVID-19 pandemic in the
- 435 United States, March to May 2020. *JAMA Internal Medicine* 180(10):1336-1344.
- 436 13. Woolf SH, Chapman DA, Sabo RT, Weinberger DM, & Hill L (2020) Excess deaths from COVID-19 and
- 437 other causes, March-April 2020. *JAMA* 324(5):510-513.
- 438 14. Mulligan CB & Arnott RD (2022) Non-Covid Excess Deaths, 2020-21: Collateral Damage of Policy
- 439 Choices? (National Bureau of Economic Research).
- 440 15. Zalla LC, Mulholland GE, Filiatreau LM, & Edwards JK (2022) Racial/Ethnic and Age Differences in the
- 441 Direct and Indirect Effects of the COVID-19 Pandemic on US Mortality. *American Journal of Public Health*
- 442 112(1):154-164.
- 443 16. Gleit DA (2022) The US midlife mortality crisis continues: excess cause-specific mortality during 2020.
- 444 *American Journal of Epidemiology* 191(10):1677-1686.
- 445 17. Case A & Deaton A (2015) Rising morbidity and mortality in midlife among white non-Hispanic
- 446 Americans in the 21st century. *Proceedings of the National Academy of Sciences* 112(49):15078-15083.

- 447 18. Case A & Deaton A (2017) Mortality and morbidity in the 21st century. *Brookings papers on economic*
448 *activity* 2017:397.
- 449 19. National_Center_for_Health_Statistics (2019) Detailed Mortality, All counties, 1999-2019 as compiled
450 from data provided by the 57 vital statistics jurisdictions through the Vital Statistics Cooperative
451 Program.
- 452 20. Hedegaard H, Miniño A, Spencer MR, & Warner M (2022) Drug overdose deaths in the United States,
453 1999–2020. *NCHS data brief* (428).
- 454 21. Hedegaard H & Warner M (2021) Suicide mortality in the United States, 1999-2019. *NCHS data brief*.
- 455 22. Spencer MR, Curtin SC, & Hedegaard H (2020) Rates of alcohol-induced deaths among adults aged 25
456 and over in urban and rural areas: United States, 2000–2018. *NCHS data brief*.
- 457 23. Czeisler MÉ, *et al.* (2020) Mental health, substance use, and suicidal ideation during the COVID-19
458 pandemic—United States, June 24–30, 2020. *Morbidity and Mortality Weekly Report* 69(32):1049.
- 459 24. Case A & Deaton A (2022) The great divide: education, despair, and death. *Annual Review of Economics*
460 14:1-21.
- 461 25. Koob GF, Powell P, & White A (2020) Addiction as a coping response: hyperkatifeia, deaths of despair,
462 and COVID-19. *American Journal of Psychiatry* 177(11):1031-1037.
- 463 26. Centers_for_Disease_Control_and_Prevention (2021) Provisional Multiple Cause of Death by Single Race
464 2018 - present, on CDC WONDER Online Database.
- 465 27. Solomon MD, *et al.* (2020) The Covid-19 pandemic and the incidence of acute myocardial infarction. *New*
466 *England Journal of Medicine* 383(7):691-693.
- 467 28. Kansagra AP, Goyal MS, Hamilton S, & Albers GW (2020) Collateral effect of Covid-19 on stroke
468 evaluation in the United States. *New England Journal of Medicine* 383(4):400-401.
- 469 29. Beaney T, *et al.* (2020) Excess mortality: the gold standard in measuring the impact of COVID-19
470 worldwide? *Journal of the Royal Society of Medicine* 113(9):329-334.
- 471 30. Czeisler MÉ, *et al.* (2020) Delay or avoidance of medical care because of COVID-19–related concerns—
472 United States, June 2020. *Morbidity and Mortality Weekly Report* 69(36):1250.
- 473 31. Richards M, Anderson M, Carter P, Ebert BL, & Mossialos E (2020) The impact of the COVID-19 pandemic
474 on cancer care. *Nature Cancer* 1(6):565-567.
- 475 32. Esser MB, *et al.* (2022) Estimated Deaths Attributable to Excessive Alcohol Use Among US Adults Aged
476 20 to 64 Years, 2015 to 2019. *JAMA Network Open* 5(11):e2239485-e2239485.
- 477 33. White AM, Castle I-JP, Powell PA, Hingson RW, & Koob GF (2022) Alcohol-related deaths during the
478 COVID-19 pandemic. *JAMA* 327(17):1704-1706.
- 479 34. Joiner Jr TE, Hollar D, & Van Orden K (2006) On Buckeyes, Gators, Super Bowl Sunday, and the Miracle
480 on Ice: " Pulling together" is associated with lower suicide rates. *Journal of Social Clinical Psychology*
481 25(2):179.
- 482 35. Donaldson AE, Larsen G, Fullerton-Gleason L, & Olson LM (2006) Classifying undetermined poisoning
483 deaths. *Injury Prevention* 12(5):338-343.

- 484 36. Olfson M, Rossen LM, Wall MM, Houry D, & Blanco C (2019) Trends in intentional and unintentional
485 opioid overdose deaths in the United States, 2000-2017. *JAMA* 322(23):2340-2342.
- 486 37. National_Center_for_Health_Statistics (2019) Bridged-race intercensal estimates of the resident
487 population of the United States for July 1, 2000-July 1, 2009. (September 1, 2021),
488 https://www.cdc.gov/nchs/nvss/bridged_race.htm.https://www.cdc.gov/nchs/nvss/bridged_race.htm.
- 489 38. National_Center_for_Health_Statistics (2019) Vintage 2019 Postcensal estimates of resident population
490 of the United States for April 1, 2010 - July 1, 2019. (September 1, 2021),
491 https://www.cdc.gov/nchs/nvss/bridged_race/data_documentation.htm.https://www.cdc.gov/nchs/nvss/bridged_race/data_documentation.htm.
- 492
- 493 39. World_Health_Organization (2004) *The International Statistical Classification of Diseases and Health*
494 *Related Problems ICD-10: Tenth Revision. Volume 1: Tabular List* (World Health Organization).
- 495 40. Miniño A, Murphy S, Xu J, & Kochanek K (2011) Deaths: Final data for 2008. ed reports Nvs (Hyattsville,
496 MD).
- 497 41. Besag J, York J, & Mollié A (1991) Bayesian image restoration, with two applications in spatial statistics.
498 *Annals of the Institute of Statistical Mathematics* 43(1):1-20.
- 499 42. Simpson D, Rue H, Riebler A, Martins TG, & Sørbye SH (2017) Penalising model component complexity: A
500 principled, practical approach to constructing priors. *Statistical Science* 32(1):1-28.
- 501 43. Konstantinoudis G, *et al.* (2022) Regional excess mortality during the 2020 COVID-19 pandemic in five
502 European countries. *Nature communications* 13(1):1-11.
- 503 44. Konstantinoudis G, *et al.* (2022) A framework for estimating and visualising excess mortality during the
504 COVID-19 pandemic. *ArXiv*.
- 505 45. Lindgren F & Rue H (2015) Bayesian spatial modelling with R-INLA. *Journal of Statistical Software* 63:1-
506 25.
- 507 46. Rue H, Martino S, & Chopin N (2009) Approximate Bayesian inference for latent Gaussian models by
508 using integrated nested Laplace approximations. *Journal of the Royal Statistical Society: Series B*
509 71(2):319-392.
- 510 47. R_Core_Team (2021) R: A language and environment for statistical computing (Vienna, Austria).
- 511 48. Anderson RN & Rosenberg HM (1998) Age standardization of death rates; implementation of the year
512 2000 standard. *National Vital Statistics Reports* 47(3):13-19.
- 513 49. Aragon TJ (2020) *epitools*: epidemiology tools. R package version 0.5-10.1. 2020.

514

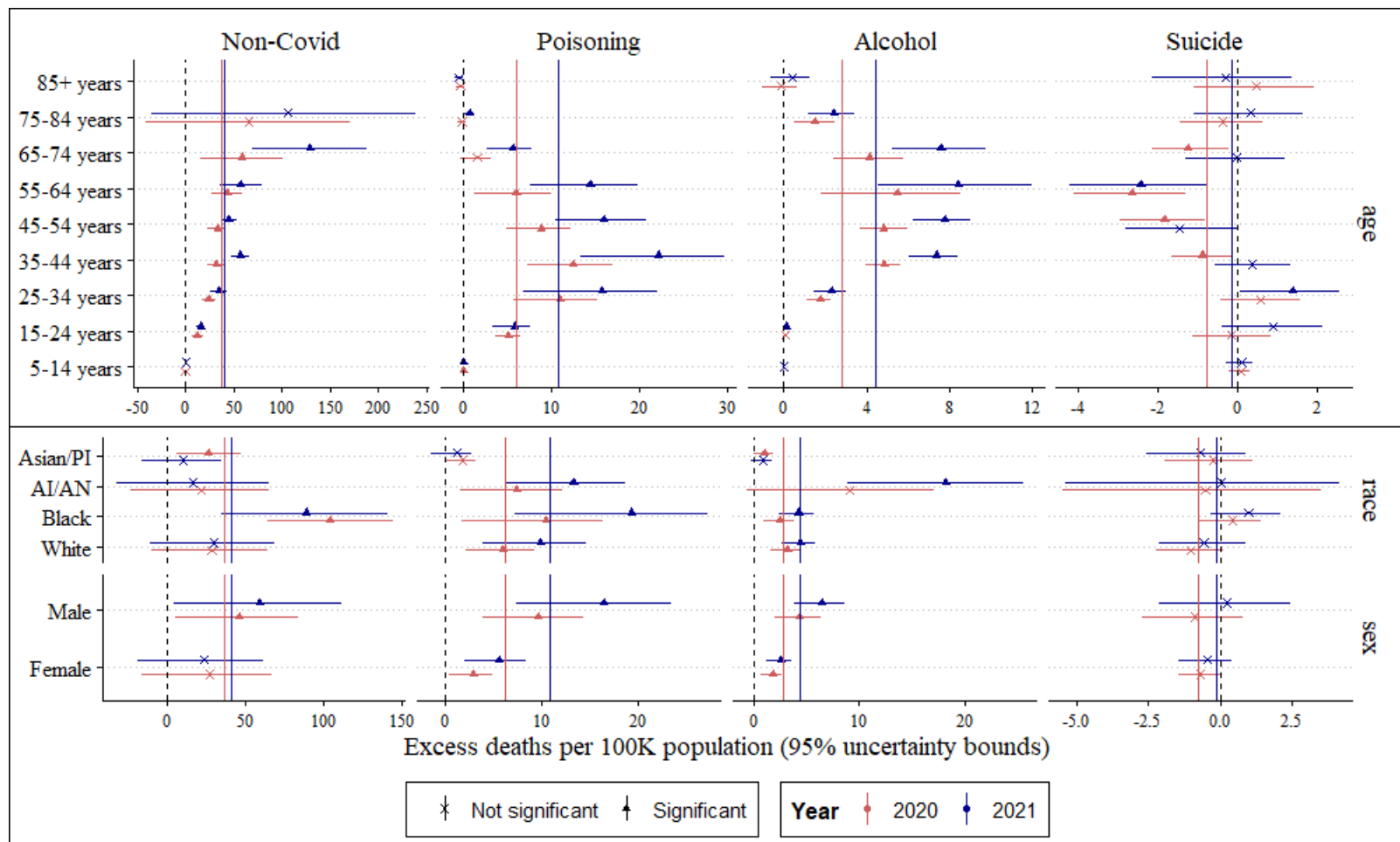


Figure 1. National excess mortality estimates in 2020 and 2021, stratified by age (top), race and sex (bottom). Estimates for race and sex are age-standardized to national age distribution using the direct method. The solid vertical lines denote national estimates. Instances where the lower and upper 95% uncertainty bounds had different signs were not considered to be significant (denoted by a x; for example *Non-Covid* in 5-14 years). *Non-Covid* deaths in 85+ year group were not statistically significant and had a large uncertainty interval and hence suppressed to improve plot legibility.

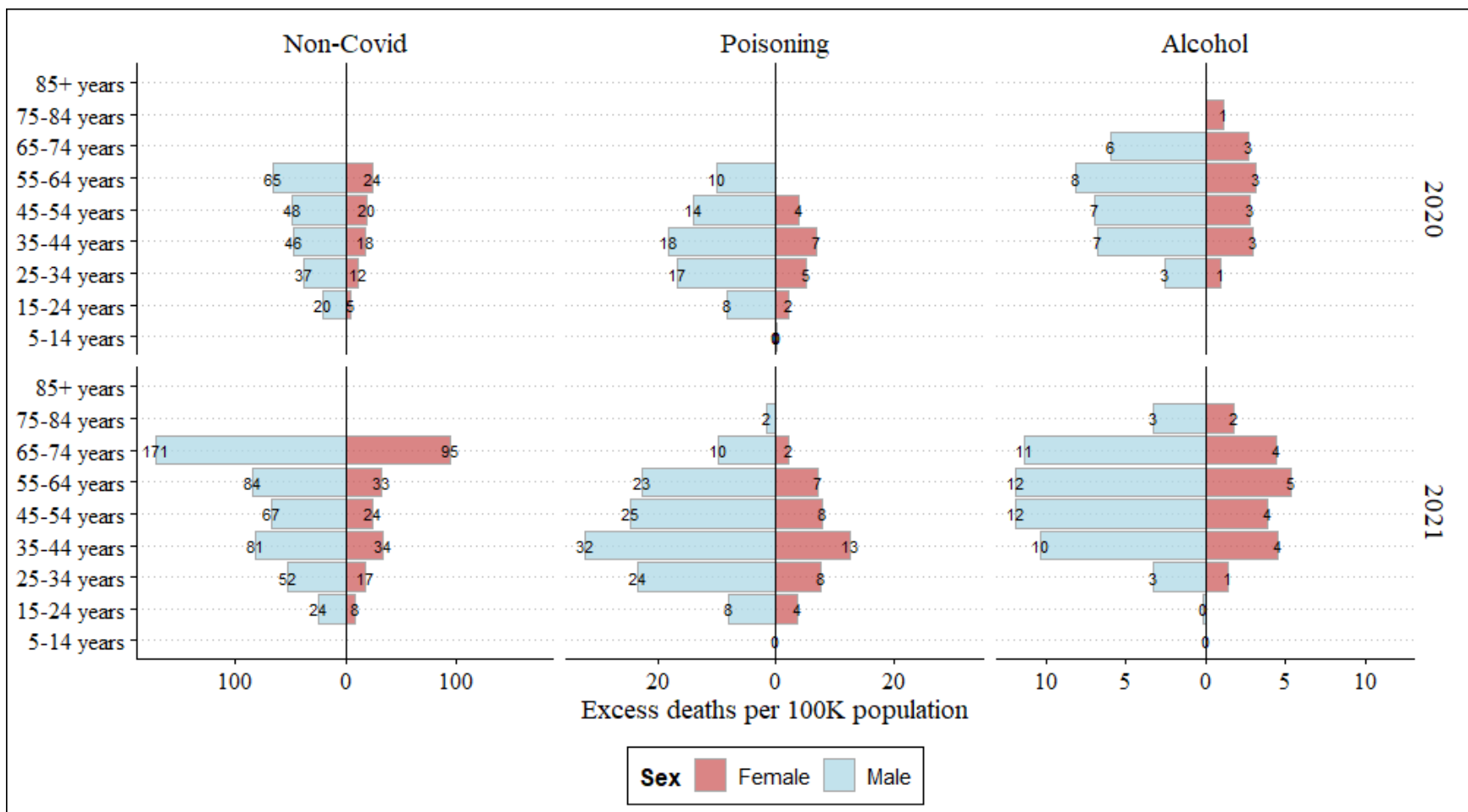


Figure 2. Excess mortality estimates from causes other than Covid-19 (Non-Covid), poisoning and alcohol-related causes, stratified by age and sex, during 2020 (top) and 2021 (bottom). Estimates not found to be statistically significant are suppressed. See Figure S1 for excess deaths from suicide.

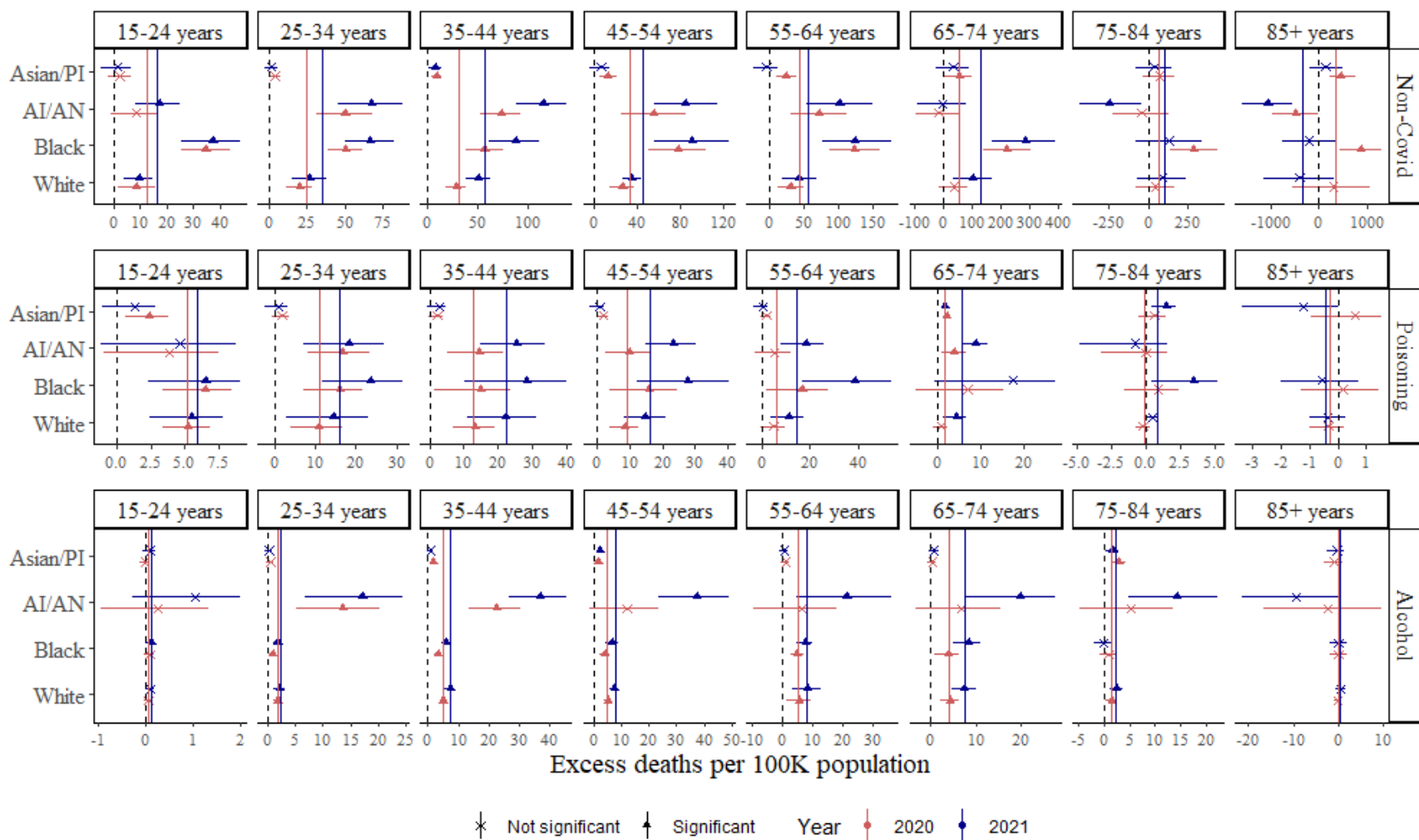


Figure 3. Excess mortality estimates from causes other than Covid-19 (Non-Covid), poisoning and alcohol-related causes, stratified by age and race, during 2020 (red) and 2021 (blue). Solid vertical lines denote excess mortality rate across all races. Instances where estimates were not statistically significant are denoted by x.

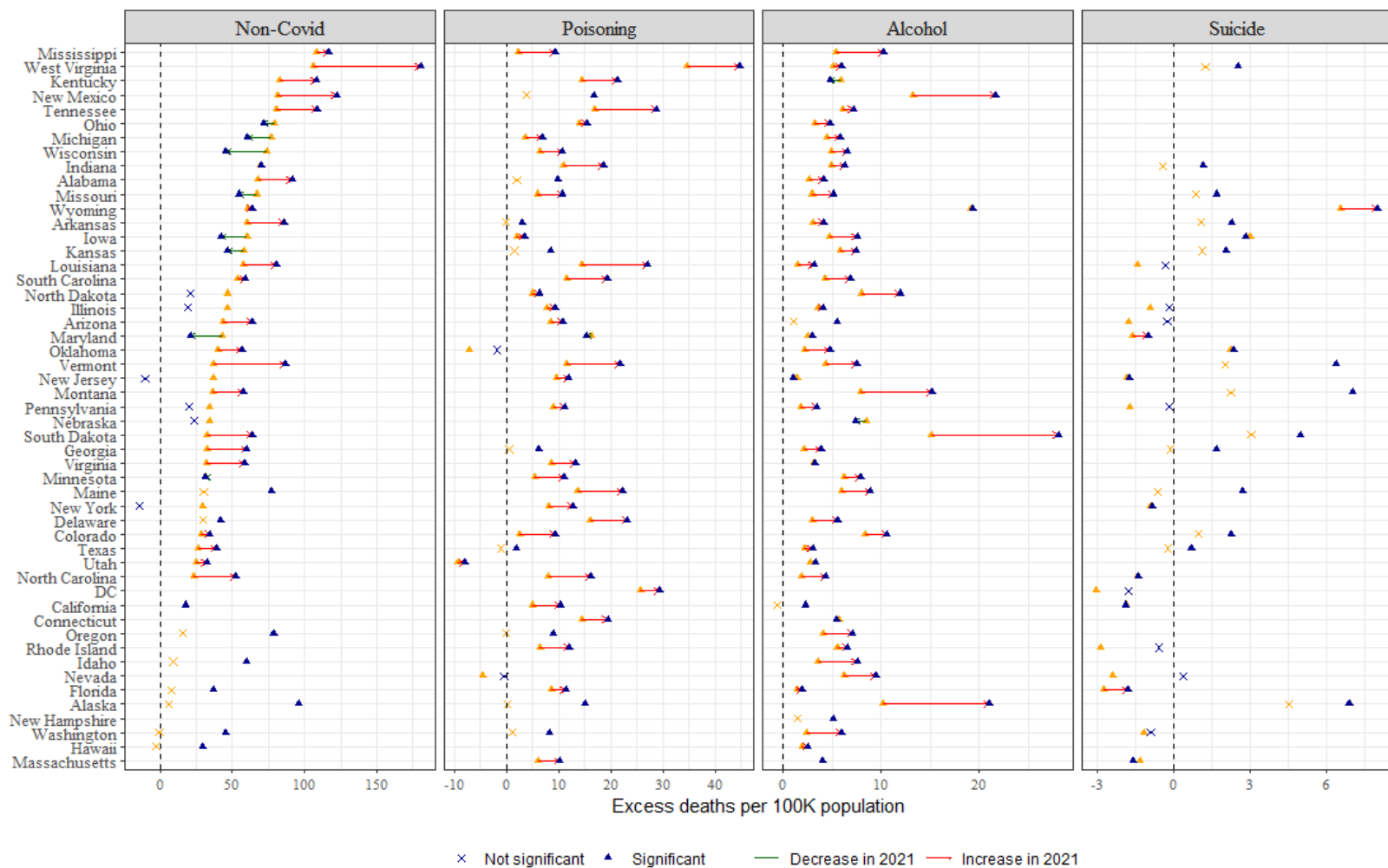


Figure 4. Change in state-level excess mortality rate from causes other than Covid-19 (Non-Covid, left), poisoning, alcohol-related causes and suicide between 2020 (orange data point) and 2021 (blue data point). Estimates that were not statistically significant are denoted by x, and states that were not significant in both years were suppressed (for example, Suicides in Mississippi). Change in excess rate between 2020 and 2021 is indicated by the color of the arrow.

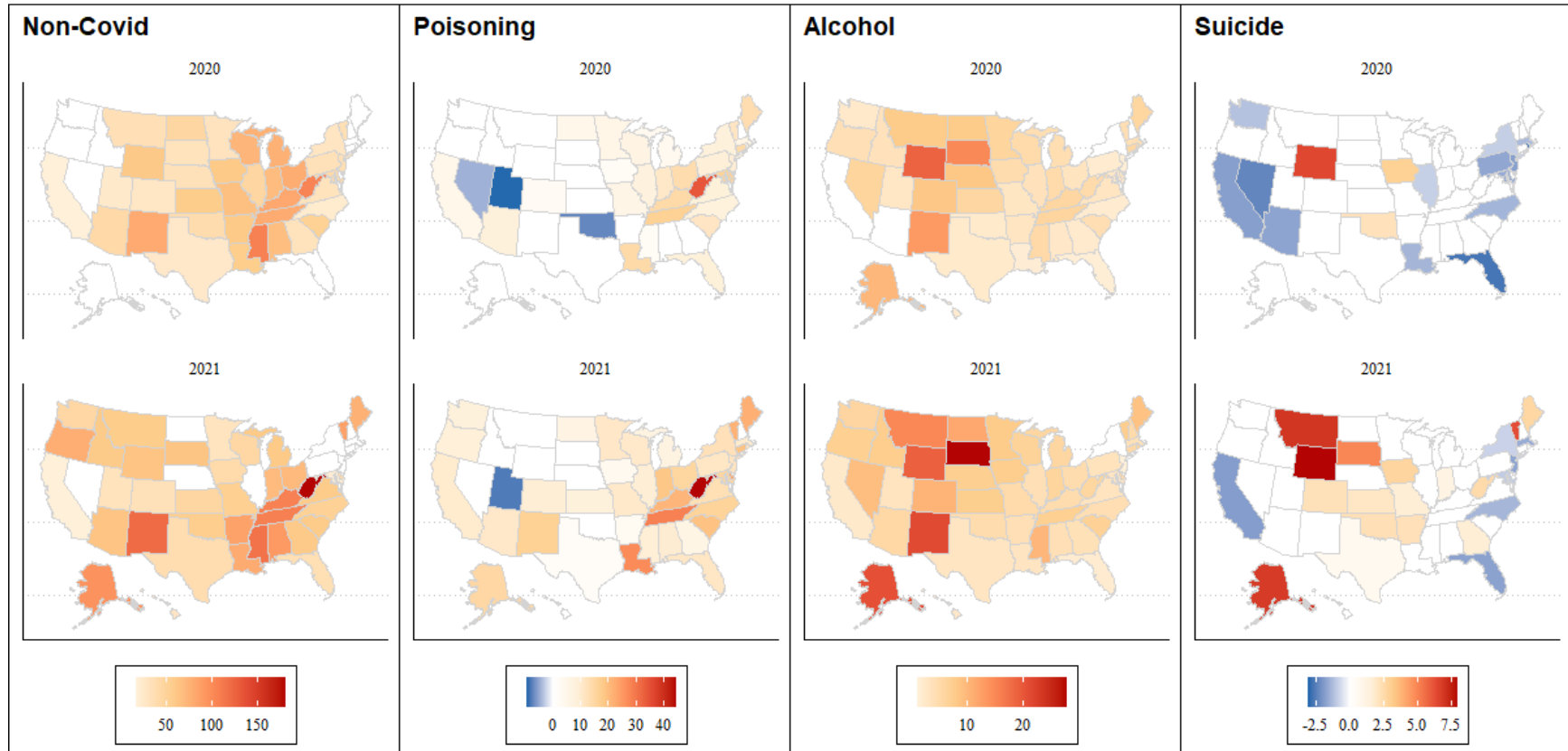


Figure 5. State-level excess mortality rate from causes other than Covid-19 (Non-Covid), poisoning, alcohol-related causes and suicide, during 2020 (top) and 2021 (bottom). Estimates that were not statistically significant were assigned no color. The magnitude of excess (deficit) rates is represented by varying shades of red (blue).