

1 **Nasopharyngeal Carcinoma and Head and Neck Cancer in Patients with Type-2 Diabetes**  
2 **Mellitus receiving SGLT2I, DPP4I or GLP1a: A population-based cohort study**  
3

4 Lifang Li PhD <sup>1\*</sup>, Oscar Hou In Chou MSc <sup>2\*</sup>, Kar Kei Mak <sup>3</sup>, Yifan Yang PhD <sup>4</sup>, Cheuk To Chung  
5 <sup>5,6</sup>, Guoliang Li MD PhD <sup>7</sup>, Catherine Chan MBChB FRCS <sup>8</sup>, Wing Tak Wong PhD <sup>9</sup>, Tong Liu  
6 MD PhD <sup>10</sup>, Bernard Man Yung Cheung PhD FRCP <sup>2</sup>, Gary Tse MD PhD FRCP FFPH <sup>10, 11, 12#</sup>,  
7 Jiandong Zhou PhD <sup>13,14#</sup>  
8

9 <sup>1</sup> Department of Biostatistics & Health Informatics, Institute of Psychiatry, Psychology &  
10 Neuroscience, King's College London, London, United Kingdom

11 <sup>2</sup> Division of Clinical Pharmacology and Therapeutics, Department of Medicine, LKS Faculty  
12 of Medicine, The University of Hong Kong, Hong Kong, China

13 <sup>3</sup> School of Medicine, Shanghai Jiao Tong University, Shanghai, China

14 <sup>4</sup> School of Management, Xi'an Jiao Tong University, Xi'an, China

15 <sup>5</sup> Diabetes Research Unit, Cardiovascular Analytics Group, PowerHealth Research Institute,  
16 Hong Kong, China

17 <sup>6</sup> Cancer Research Institute, Quest Genomics, Hong Kong, China

18 <sup>7</sup> Department of Cardiovascular Medicine, The First Affiliated Hospital of Xi'an Jiaotong  
19 University, Xi'an, China

20 <sup>8</sup> Department of Ear, Nose and Throat, Prince of Wales Hospital, Hong Kong, China

21 <sup>9</sup> School of Life Sciences, Chinese University of Hong Kong, Hong Kong, China

22 <sup>10</sup> Tianjin Key Laboratory of Ionic-Molecular Function of Cardiovascular Disease, Department  
23 of Cardiology, Tianjin Institute of Cardiology, Second Hospital of Tianjin Medical University,  
24 Tianjin 300211, China

25 <sup>11</sup> Kent and Medway Medical School, Canterbury, Kent, CT2 7NT, United Kingdom

26 <sup>12</sup> School of Nursing and Health Studies, Hong Kong Metropolitan University, Hong Kong,  
27 China

28 <sup>13</sup> Department of Family Medicine and Primary Care, Li Ka Shing Faculty of Medicine, The  
29 University of Hong Kong, Hong Kong, China

30 <sup>14</sup> Division of Health Science, Warwick Medical School, University of Warwick, Coventry,  
31 United Kingdom

32  
33 \*Co-first authors.

34 # Correspondence to:

35 *Prof. Gary Tse, MD, PhD, FRCP, FFPH*

36 Tianjin Institute of Cardiology, The Second Hospital of Tianjin Medical University, Tianjin  
37 300211, China

38 Kent and Medway Medical School, Canterbury, United Kingdom

39 School of Nursing and Health Studies, Hong Kong Metropolitan University, Hong Kong, China

40 Email: [gary.tse@kmms.ac.uk](mailto:gary.tse@kmms.ac.uk)

NOTE: This preprint reports new research that has not been certified by peer review and should not be used to guide clinical practice.

41 *Prof. Jiandong Zhou, PhD*

42 Department of Family Medicine and Primary Care, Li Ka Shing Faculty of Medicine, The  
43 University of Hong Kong, Hong Kong, China

44 Division of Health Science, Warwick Medical School, University of Warwick, United Kingdom

45 Email: [Jiandong.Zhou@warwick.ac.uk](mailto:Jiandong.Zhou@warwick.ac.uk)

46

47

48 **Abstract**

49 **Introduction:** Nasopharyngeal carcinoma (NPC) remains endemic in Asian regions, which risk  
50 factors were distinct from other head and neck (H&N) cancers. Anti-diabetic drugs has been  
51 proposed to reduce the risk of NPC. The associations between sodium glucose cotransporter  
52 2 inhibitors (SGLT2I) versus dipeptidyl peptidase-4 inhibitors (DPP4I) and the risks of NPC and  
53 H&N cancer amongst type-2 diabetes mellitus (T2DM) patients remains unknown.

54 **Method:** This was a retrospective population-based cohort study including T2DM patients  
55 treated with either SGLT2I or DPP4I between 1<sup>st</sup> January 2015 and 31<sup>st</sup> December 2019 in  
56 Hong Kong. The primary outcome was new-onset NPC and other H&N cancer. The secondary  
57 outcome was cancer-related mortality. Propensity score matching (1:1 ratio) was performed  
58 using the nearest neighbour search. Multivariable Cox regression was applied to identify  
59 significant predictors.

60 **Results:** This cohort included 75,884 patients with T2DM, amongst whom 28,778 patients  
61 were on SGLT2I and 47,106 patients were on DPP4I. After matching (57556 patients), 106  
62 patients developed NPC (0.18%), and 50 patients developed H&N cancer (0.08%). Compared  
63 to DPP4I, SGLT2I was associated with significantly lower risks of NPC (Hazard ratio [HR]: 0.41;  
64 95% Confidence interval [CI]: 0.21-0.81) but not H&N cancer (HR: 1.00; 95% CI: 0.26-3.92)  
65 after adjustments. The result remained significant regardless of demographics and obesity.  
66 The association remained consistent in different risk models, matching approaches, and the  
67 sensitivity analysis.

68 **Conclusion:** This study provides real-world evidence that SGLT2I was associated with lower  
69 risks of NPC, but not H&N cancer compared to DPP4I after adjustments amongst T2DM  
70 patients.

71

- 72 **Keywords:** Sodium glucose cotransporter 2 inhibitors, dipeptidyl peptidase-4 inhibitors,
- 73 Nasopharyngeal cancer, head and neck cancer, cancer, type-2 diabetes

## 74 Introduction

75 Nasopharyngeal carcinoma (NPC) remains as major public health challenge due to  
76 their prevalence and mortality rate, especially in many Asian countries, with a reported  
77 incidence up to 50 per 100,000 population.<sup>1</sup> This is in contrast to the prevalence of NPC in  
78 the Western countries which has a prevalence of less than 1 per 100. In general, head and  
79 neck (H&N) cancer are tumours derived from the mucosa of the aerodigestive tract from the  
80 nasal cavity to the larynx.<sup>2</sup> One of the most important H&N cancer is NPC. NPC has a distinct  
81 epidemiology, aetiology and pathological characteristics compared to other H&N cancer.<sup>3</sup>  
82 NPC is endemic in the southern region of China, as well as other parts of east and southeast  
83 Asia.<sup>4</sup> Epstein-Barr virus (EBV) infection remained as the centre of the pathogenesis of NPC.  
84 Lifestyle and diet habits such as consuming preserved food which is more likely to be practised  
85 by Chinese population and smoking may become another potential risk factors for NPC.<sup>5</sup> Since  
86 most patients with NPC are diagnosed with late-stage disease, and that patients diagnosed  
87 with metastatic NPC have poor prognosis, there remains to be a need for preventing the risks  
88 of new-onset NPC.<sup>6</sup>

89 Anti-diabetic drugs has been described in reducing the risk of NPC. In a Taiwan study,  
90 metformin was associated with a significantly lower risks of NPC compared to metformin non-  
91 user amongst T2DM patients.<sup>7</sup> Sodium glucose cotransporter 2 inhibitors (SGLT2I) has  
92 demonstrated extensive anti-cancer effects across various malignancy, such that SGLT2I was  
93 associated with a reduced risks of cancer compared to placebo or other anti-diabetic drugs.<sup>8-</sup>  
94 <sup>10</sup> EBV-encoded oncoprotein latent membrane protein 1 (LMP1) may increase the level of  
95 glucose transporter 1 and therefore enhance glucose uptake by the NPC cells and drives the  
96 Warburg effect.<sup>6, 11</sup> As such, SGLT2I might have help prevent NPC by playing its role in the  
97 metabolic reprogramming. However, the effects of SGLT2I on NPC on a population scale

98 remained uncertain. However, the association between other second-line anti-diabetic drugs  
99 such as SGLT2I and ) dipeptidyl peptidase-4 inhibitors (DPP4I) remained scarce.

100 Since NPC remains endemic in Hong Kong, using the territory's electronic health  
101 record data allows studying the association between SGLT2I and NPC using a data with large  
102 sample size, which is unlikely to be completed using a prospective study or randomised  
103 controlled trials.<sup>12</sup> Hence, this study aimed to investigate the role of SGLT2I and DPP4I with  
104 new-onset NPC and H&N cancer in a cohort of T2DM patients from a territory-wide  
105 population cohort study.

106

## 107 **Methods**

108           This study was approved by the Institutional Review Board of the University of Hong  
109 Kong/Hospital Authority Hong Kong West Cluster (HKU/HA HKWC IRB) (UW-20-250) and  
110 complied with the Declaration of Helsinki.

111

### 112 *Study design and population*

113           This was a retrospective, territory-wide cohort study of T2DM patients who received  
114 their treatment with SGLT2I or DPP4I between 1st January 2015, and 31st December 2019, in  
115 Hong Kong. The follow-up period is continued until 31<sup>st</sup> December 2020, or until the patients'  
116 demise. A sensitivity analysis that included a cohort of patients on glucagon-like peptide-1  
117 receptor agonist (GLP1a) between 1st January 2015 and 31st December 2019 was conducted  
118 to elucidate the relative effects among the second-line oral antidiabetic medications. The  
119 patients were identified from the Clinical Data Analysis and Reporting System (CDARS), a  
120 territory-wide database that centralizes patient information from individual local hospitals to  
121 establish comprehensive medical data, including clinical characteristics, disease diagnosis,  
122 laboratory results, and drug treatment details. The system has been used by local teams in  
123 Hong Kong to conduct comparative studies.<sup>13-15</sup> The exclusion criteria of the study involved  
124 patients: 1) With prior NPC or H&N cancer 2) Without complete demographics 3) Under 18  
125 years old (**Figure 1**). This study employed an as-treat approach, including the censoring of  
126 patients at the discontinuation of treatment or switching between the comparison  
127 medications.

128           The demographic details of the patients, including gender and age at the initiation of drug  
129 use (baseline), clinical diagnoses and laboratory results as well as medications were extracted  
130 for this study. International Classification of Diseases Ninth Edition (ICD-9) codes

131 **(Supplementary Table 1)** were used to identify the prior comorbidities. Financial aid patients  
132 were defined based on their participation in the Comprehensive Social Security Assistance  
133 (CSSA) scheme, higher disability allowance, normal disability allowance, waiver and other  
134 financial aid in Hong Kong. Charlson's standard comorbidity index and the duration and  
135 frequency of SGLT2I and DPP4I usage were calculated. To calculate the diabetes duration, the  
136 earliest date was examined by the first date of (1) diagnosis using ICD-9; (2) Hba1c $\geq$ 6.5%; (3)  
137 Fasting glucose $\geq$ 7.0 mmol/l or Random glucose 11.1 mmol/l; (4) using antidiabetic drugs. The  
138 estimated glomerular filtration rate (eGFR) was computed using the abbreviated modification  
139 of diet in renal disease (MDRD) formula.<sup>16</sup>

140

#### 141 *Adverse outcomes*

142 The primary outcome of this study was new-onset NPC (ICD-9: 147) and H&N cancer  
143 other than NPC (ICD-9: 140-149, 160-161, excluding 147).<sup>17</sup> Mortality data were obtained  
144 from the Hong Kong Death Registry, an official government registry with the registered death  
145 records of all Hong Kong citizens linked to CDARS. Mortality was recorded according to the  
146 *International Classification of Diseases Tenth Edition* (ICD-10). The endpoint date of interest  
147 for eligible patients was the primary outcome presentation date. The endpoint for those  
148 without primary outcome was the mortality date or the endpoint of the study, which is 31<sup>st</sup>  
149 December 2020.

150

#### 151 *Statistical analysis*

152 Descriptive statistics are used to outline the baseline clinical and biochemical  
153 characteristics of patients using SGLT2I and DPP4I. The continuous variable for baseline



154 clinical features was expressed as the mean (95% confidence interval/standard deviation [SD])  
155 while the total number (percentage) represented the categorical variables. The two-tailed  
156 Mann-Whitney U test was utilised to make a comparison between the continuous variables,  
157 whereas the two-tailed Chi-square test with Yates' correction was applied for 2x2 contingency  
158 data. Propensity score matching with 1:1 ratio for SGLT2I use versus DPP4I use based on  
159 demographics, prior comorbidities, number of prior hospitalisation, duration from T2DM  
160 diagnosis initial drug exposure, non-SGLT2I/DPP4I medications, abbreviated MDRD, time-  
161 weighted HbA1c, and time-weighted fasting glucose were performed using the nearest  
162 neighbour search strategy with a calliper of 0.1. Stata software (Version 16.0) was used in  
163 facilitating the propensity score matching procedures.

164 In this study, we assessed the comparison of the baseline characteristics of patients  
165 before and after consuming SGLT2I and DPP4I with standardized mean difference (SMD),  
166 where  $SMD < 0.10$  was considered as indicative of well-balanced between the two groups. A  
167 Cox proportional hazards regression model was performed to identify significant risk  
168 predictors of adverse study outcomes. Adjustments were made for the demographics, past  
169 comorbidities, duration of diabetes mellitus, and number of prior hospitalizations, number of  
170 anti-diabetic drugs, non-SGLT2I/DPP4I medications, abbreviated MDRD, HbA1c, fasting  
171 glucose, lipid profile. To verify the proportionality assumption for the model mentioned above,  
172 the log-log plot was established. The cumulative incidence curves were generated for both  
173 primary and secondary outcomes and the subgroup analysis was undertaken for the  
174 affirmation of the association among patients with pivotal clinical predictors.  $P_{interaction}$  was  
175 applied to examine the differences in the associations between the subgroups.

176 To account for the potential competing risks in this study, cause-specific and sub-  
177 distribution hazard models were also carried out. Multiple propensity score methodologies  
178 were implemented, encompassing propensity score stratification,<sup>18</sup> propensity score with  
179 inverse probability of treatment weighting (IPTW)<sup>19</sup> and propensity score with stable inverse  
180 probability weighting<sup>20</sup>. We also performed a sensitivity analysis to examine the impacts of  
181 the various minimum drug duration on the outcome. The contraindication of the use of  
182 SGLT2I included patients with CKD stage 4/5 (eGFR <30 mL/min/1.73m<sup>2</sup>), peritoneal dialysis  
183 or haemodialysis recipients and thus being excluded for the above analysis. Besides, the  
184 exclusion criteria were also included: (1) patients who have primary immunodeficiency; (2)  
185 Lag time of 6 months, 1 year and 2 years; (3) 10% propensity score at the 2 ends.

186 To evaluate the relationship and preference amongst the three novel second-line  
187 antidiabetic drugs, the three-arm sensitivity analysis involving GLP1a using stabilized IPTW  
188 was performed. As part of a falsification analysis to detect residual bias and confounding  
189 factors arising from unobserved variables, a negative control outcome was introduced. To be  
190 specified, lower limb fractures (ICD-9 codes: 820-829) were utilized in the falsification analysis.  
191 Any observed significant association in this context was interpreted as likely stemming from  
192 bias rather than a genuine effect. The final results were demonstrated in terms of hazard ratio  
193 (HR), 95% CI and P-value. Statistical significance was defined as P-value < 0.05. All statistical  
194 analyses were executed with RStudio software (Version: 1.1.456) and Python (Version: 3.6).

195

## 196 **Results**

### 197 *Baseline characteristics*

198 In this territory-wide cohort study of 76,147 patients with T2DM treated with  
199 SGLT2I/DPP4I between 1st January 2015 and 31st December 2019 in Hong Kong, patients  
200 were followed up until 31st December 2020 or their deaths (**Figure 1**). The following patient  
201 groups were excluded: (1) with prior NPC or H&N cancer (N=113); (2) without complete  
202 demographics (N=19); (3) under 18 years old (N=108). After exclusion, this study included a  
203 total of 75,884 patients with T2DM (mean age: 62.4 years old [Standard deviation: 12.8];  
204 55.77% males), of whom 28,778 patients used SGLT2Is, and 47,106 patients used DPP4Is  
205 (**Table 1**). Before matching, the SGLT2 users had higher numbers of male patients, were  
206 younger, had lower Charlson's standard comorbidity index, and had more cases of  
207 hypertension, use of anti-diabetic drugs, anti-hypertensive drugs and lipid-lowering drugs,  
208 and a higher eGFR compared to DPP4I users. The characteristics of patients are shown in  
209 **Table 1**.

210 After the propensity score matching, baseline characteristics and the time-weighted  
211 lipid and glucose profiles of the 2 groups were well-balanced, apart from baseline age  
212 (SMD=0.14), number of hospitalizations (SMD=0.12), thiazolidinedione (SMD=0.13), and  
213 abbreviated MDRD (SMD=0.11) (**Table 1**). The DPP4I and SGLT2I cohorts were comparable  
214 after matching with nearest neighbour search strategy with calliper of 0.1, and the  
215 proportional hazard assumption was confirmed (**Supplementary Figure 1**). In the matched  
216 cohort, 106 patients developed NPC, 50 patients developed H&N cancer, 899 patients passed  
217 away due to cancer during the study period (**Figure 1**).

218

219 *The association between SGLT2I and the primary outcomes*

220 In the matched cohort, 31 SGLT2I users and 75 DPP4I users developed NPC. After a  
221 mean follow-up of 314,709.1 person-year, the incidence of NPC was lower amongst SGLT2I  
222 users (Incidence rate [IR] per 100,000 person-year: 19.43; 95% CI: 13.20-27.58) compared to  
223 DPP4I users (IR per 100,000 person-year: 48.33; 95% CI: 38.02-60.58) (**Table 2**). Compared to  
224 DPP4I users, SGLT2I users had a 59% lower risk of NPC after adjustment (Hazard ratio [HR]:  
225 0.41; 95% Confidence Interval [CI]: 0.21-0.81) for demographics, past comorbidities, duration  
226 of diabetes mellitus, and number of prior hospitalizations, number of anti-diabetic drugs, non-  
227 SGLT2I/DPP4I medications, abbreviated MDRD, HbA1c, fasting glucose, lipid profile. (**Table 2**).  
228 This was substantiated by the cumulative incidence curves stratified by SGLT2I versus DPP4I  
229 (**Figure 2**).

230 Meanwhile, 20 SGLT2I users and 30 DPP4I users developed H&N cancer. After a mean  
231 follow-up of 314,893.5 person-year, the incidence of NPC was lower amongst SGLT2I users (IR  
232 per 100,000 person-year: 12.53; 95% CI: 7.66-19.36) compared to DPP4I users (IR per 100,000  
233 person-year: 19.32; 95% CI: 13.03-27.58) (**Table 2**). SGLT2I users was not associated with H&N  
234 cancer (HR: 1.00; 95% CI: 0.26-3.92) compared to users of DPP4I after adjustment (**Table 2**).

235

### 236 *The association between SGLT2I and cancer-related mortality*

237 180 SGLT2I users and 719 DPP4I users died. After a follow-up of 315,010.8 person-  
238 year, the incidence of cancer-related mortality was lower amongst SGLT2I users (IR: 112.76;  
239 95% CI: 96.89-130.49) compared to DPP4I users (IR: 462.74; 95% CI: 429.53-497.84) (**Table 2**).  
240 SGLT2I users had a lower risk of cancer-related mortality after adjustment (HR: 0.42; 95% CI:  
241 0.29-0.60) compared to users of DPP4I. This was substantiated by the cumulative incidence  
242 curves stratified by SGLT2I versus DPP4I (**Figure 2**).

243

244 *Subgroup analysis*

245           The results of the subgroup analysis for effects of SGLT2I and DPP4I on the NPC are  
246 shown in **Figure 3**. The result demonstrated that SGLT2I was associated with lower risks of  
247 NPC regardless of sex, age, socioeconomic status, renal disease, and obesity. Besides, the  
248 effects of SGLT2I on NPC were not affected by presence of baseline cancer, autoimmune  
249 disease, systemic steroid use, or immunosuppressant/chemotherapy use. The marginal  
250 effects analysis demonstrated that SGLT2I use was associated with lower risks of NPC  
251 regardless the duration of diabetes (**Supplementary Figure 2**). However, SGLT2I was  
252 associated with lower risks of NPC compared to DPP4I only amongst patient with poorer renal  
253 function and higher time-weighted mean of HbA1c. Meanwhile, SGLT2I was associated with  
254 lower risks of H&N cancer regardless of the time-weighted mean of HbA1c, but only amongst  
255 patients with short duration of diabetes, poorer renal function.

256

257 *Sensitivity analyses*

258           Sensitivity analyses were performed to confirm the predictability of the models. The  
259 results of the cause-specific hazard models, sub-distribution hazard models and different  
260 propensity score approaches demonstrated that different models did not change association  
261 for both the primary and the secondary outcomes (**Supplementary Table 2**). A three-arm  
262 analysis with the inclusion of GLP1a including patients only on (SGLT2I, DPP4I, and GLP1a)  
263 using stabilized IPTW was conducted (**Supplementary Table 3**). While SGLT2I was also  
264 associated with higher risks of NPC compared to GLP1a, the results remained insignificant due  
265 to the insufficient power in the GLP1a cohort (HR: 1.24; 95% CI: 0.79-1.66). Besides, SGLT2I

266 also did not associated with a lower risk of cancer-related mortality compared to GLP1a (HR:  
267 1.09; 95% CI: 0.56-1.95). The sensitivity analysis for 6 months, 1-year and 2-year lag time  
268 demonstrated the same pattern. Besides, after excluding patients with extreme 10%  
269 propensity score at the 2 end, patients with CKD stage 4/5 (eGFR <30), peritoneal dialysis or  
270 haemodialysis, and patients with primary immunodeficiency likewise, the results  
271 demonstrated that SGLT2I remained associated with lower risks of NPC compared to DPP4I  
272 **(Supplementary Table 4).**

273

274 *Falsification analysis*

275 Lower limb fracture was used as negative control outcome in the falsification analysis  
276 for the comparison between SGLT2I and DPP4I since most of the cases should be traumatic  
277 cause **(Supplementary Table 9)**. The results demonstrated that SGLT2I was not associated  
278 with lower limb fracture after adjustment (HR: 1.29; 95% CI: 0.95-1.79) compared to DPP4I.

279

280 **Discussion**

281 In this territory-wide cohort study, the associations between SGLT2I, DPP4I and new-  
282 onset NPC and H&N were examined using real-world data. Our results firstly demonstrate  
283 that SGLT2I use was independently associated with a lowered risk of new-onset NPC than  
284 DPP4I usage after adjustments. Secondly, SGLT2I was not associated with lower risks of H&N  
285 cancer compared to DPP4I. The results remained consistent across different competing risk  
286 and the sensitivity analyses, and the falsification analysis did not falsify the results. To the  
287 best of our knowledge, this was the first cohort study to examine the association between  
288 SGLT2I and NPC.

289

290 *Comparison with previous studies*

291           The incidence of NPC in our study for SGLT2I and for DPP4I parallels the values of  
292 existing study, with a reported incidence of 15-50 per 100,000 population.<sup>1</sup> NPC is endemic in  
293 Southern China, as well as other parts of South-East Asia.<sup>21</sup> In Hong Kong, a previous study  
294 described an incidence of 10.1 per 100,000 in male and 3.3 per 100,000 in female in 2020.<sup>22</sup>  
295 Previously, SGLT2I was proposed as an potential anti-tumour agents since sodium-glucose  
296 cotransporter 2 was over-expressed in multiple tumour models, including head and neck  
297 cancer.<sup>23, 24</sup> In this study, we found that SGLT2I was associated with lower risk of NPC  
298 compared to DPP4I.

299           Previously, metformin was reported to be associated with a lower risk of NPC  
300 compared to metformin non-user.<sup>7, 25 26</sup> However, the effects of the anti-diabetic drugs on  
301 NPC might be independent of their ability of glycaemic control. Previously, a meta-analysis  
302 identified that T2DM patients might have decreased risk of NPC amongst the Asian population.  
303 This could be explained by the pathological phenotypes of undifferentiated NPC. It was found  
304 that the prevalence of T2DM in differentiated NPC was higher compared to undifferentiated  
305 cases, such that T2DM may only effect on the former pathological subtype.<sup>27</sup> T2DM was also  
306 reported not to be associated with mortality amongst NPC patients.<sup>28</sup> Meanwhile, in a  
307 prospective cohort study in Taiwan, diabetic patients who received metformin had a lower  
308 risk of developing H&N cancer compared to the matched individuals without metformin.  
309 Specifically, the incidence of oropharyngeal cancer and NPC was significantly lower for  
310 patients treated with metformin than their counterparts.<sup>29</sup> Another study also supported a  
311 reduced risk of H&N cancer for metformin, particularly with a history of smoking and heavy

312 drinking.<sup>29</sup> Apart from anti-diabetic medications, a Taiwan case-control study found that the  
313 risk of head and neck cancer is reduced by statin.<sup>30</sup> Several studies also demonstrated that  
314 patients received statin were associated with increased survival of head and neck cancer.<sup>31, 32</sup>  
315 Hence, metabolic drugs might potentially be preventive for head and neck cancer.

316

### 317 *Potential underlying mechanisms*

318 SGLT2 inhibitors have recently reported to exhibit possible anti-cancer effects in  
319 several malignancies. It was proposed that SGLT2I act to inhibit the active reverse transport  
320 of glucose by SGLT-2 located in the proximal renal tubule, which consequently affect the  
321 cellular respiration and growth of the tumour cells.<sup>33 34</sup> Our results suggested that the effects  
322 of SGLT2I mainly targeted specifically on NPC but not H&N cancer in general. Besides, SGLT2I  
323 may act on the LMP1 induced glucose transporter 1 which reduce glucose uptake by the NPC  
324 cells.<sup>6, 11</sup> Meanwhile, DPP4I were hypothesized to diminish the cancer risk by eliminating the  
325 degradation of incretins, glucagon-like peptide-1 (GLP-1) and glucose-dependent  
326 insulinotropic peptide (GIP) in the cell.<sup>35</sup> Although there are multiple studies regarding both  
327 SGLT2 inhibitors and DPP4 inhibitors act on cancer, the mechanism of both medications  
328 towards head and neck cancer, especially NPC, remains unclear.

329

### 330 *Clinical implications*

331 The secondary protective benefits of SGLT2I and DPP4I on cardiovascular benefits and  
332 cancer have received worldwide attention in recent years. While there is substantial evidence  
333 supporting the effects of the anti-diabetic medications on cardiovascular diseases <sup>36</sup>, few  
334 evidence surrounding the latter. By exploring the association of SGLT2I and DPP4I in HCCNPC



335 this study added to the growing body of evidence supporting the use of antidiabetic agents in  
336 preventing cancer. However, further molecular studies and clinical studies are needed to  
337 confirm the causation relationship between SGLT2I and NPC.

338

### 339 *Limitations*

340 Several limitations should be acknowledged in this study. First of all, the observational  
341 nature of this study gives inherent issues such as under-coding, coding errors, and missing  
342 data possibly resulting in information bias. Crucial data on predictive variables, for instance,  
343 nitrosamine consumption, diet, and family history of NPC were unavailable from CDARS. In  
344 addition, the inclusion of patients in CDARS was only limited to those who smoked, consumed  
345 alcohol, and were obese to a degree that required medical attention and treatment. To  
346 mitigate this limitation, this study incorporated extensive comorbidities related to NPC to  
347 indirectly infer the possible risk variables. Furthermore, a falsification analysis was also  
348 conducted to minimise the risk of residual confounding. Moreover, the retrospective design  
349 allows only for the inference of associations but not the demonstration of causation  
350 relationships. Lastly, assessing medication adherence relied solely on prescription refills,  
351 lacking direct measurement of drug exposure. This approach may lead to time lag biases and  
352 immortal time issues. Hence, it is essential to conduct prospective randomised controlled  
353 trials aimed at evaluating the causal links of anti-diabetic medications.

354

### 355 **Conclusion**

356 In this population-based cohort study, SGLT2I users was associated with lower risks of  
357 NPC but not H&N cancer compared to DPP4I users after matching and adjustments compared  
358 to DPP4I users in Asia. Future studies are needed about the SGLT2I and its action on NPC.

359

### 360 **Ethical approval statement**

361 This study was approved by the Institutional Review Board of the University of Hong  
362 Kong/Hospital Authority Hong Kong West Cluster (HKU/HA HKWC IRB) (UW-20-250) and  
363 complied with the Declaration of Helsinki.

364

### 365 **Availability of data and materials**

366 The data that support the findings of this study were provided by the Hong Kong Hospital  
367 Authority, but restrictions apply to the availability of these data, which were used under  
368 license for the current study, and so are not publicly available. Data are however available  
369 from the authors upon reasonable request and with permission of Hong Kong Hospital  
370 Authority.

371

### 372 **Conflicts of Interest**

373 None.

374

### 375 **Acknowledgements**

376 Oscar Hou In Chou and Kar Kei Mak would like to thank Bai Xian Asia Institute (BXAI) for her  
377 generosity in providing Asian Future Leaders Scholarship Program scholarship.

378

### 379 **Funding**

380 This research received no specific grant from any funding agency in the public, commercial,  
381 or not-for-profit sectors.

382

### 383 **Guarantor Statement**

384 All authors approved the final version of the manuscript. GT is the guarantor of this work and,  
385 as such, had full access to all the data in the study and takes responsibility for the integrity of  
386 the data and the accuracy of the data analysis.

387

### 388 **Author contributions**

389 LF L, OHI C, JD Z: conception of study, preparation of figures, study design, data contribution,  
390 statistical analysis, data interpretation, manuscript drafting, and critical revision of the  
391 manuscript.

392 OHI C, KK M, YF Y, CT C: literature search, data interpretation, literature search, data collection,  
393 manuscript drafting.

394 GL L, C C, WT W, T L, BMY C: critical revision of the manuscript

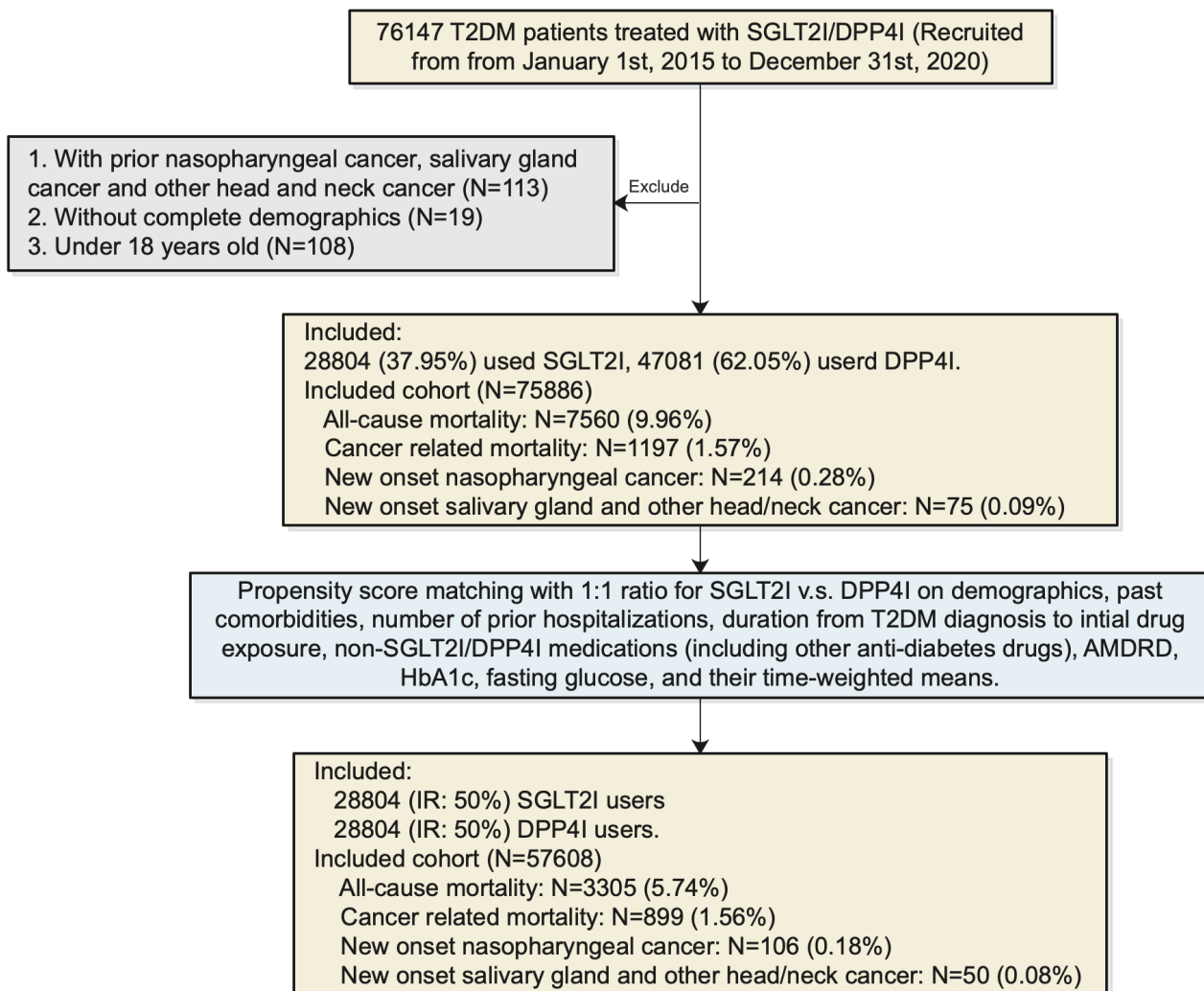
395 G T, JD Z: conception of study and literature search, study design, data collection, and critical  
396 revision of manuscript, study supervision.

## References

1. Mahdavifar N, Ghoncheh M, Mohammadian-Hafshejani A, Khosravi B, Salehiniya H. Epidemiology and Inequality in the Incidence and Mortality of Nasopharynx Cancer in Asia. *Osong Public Health and Research Perspectives*. 2016;7(6): 360-372. <https://doi.org/https://doi.org/10.1016/j.phrp.2016.11.002>.
2. Getz KR, Bellile E, Zarins KR, et al. Statin use and head and neck squamous cell carcinoma outcomes. *Int J Cancer*. 2021;148(10): 2440-2448. <https://doi.org/10.1002/ijc.33441>.
3. Chang ET, Adami HO. The enigmatic epidemiology of nasopharyngeal carcinoma. *Cancer Epidemiol Biomarkers Prev*. 2006;15(10): 1765-1777. <https://doi.org/10.1158/1055-9965.Epi-06-0353>.
4. Yu MC, Yuan JM. Epidemiology of nasopharyngeal carcinoma. *Semin Cancer Biol*. 2002;12(6): 421-429. <https://doi.org/10.1016/s1044579x02000858>.
5. Tsao SW, Yip YL, Tsang CM, et al. Etiological factors of nasopharyngeal carcinoma. *Oral Oncol*. 2014;50(5): 330-338. <https://doi.org/10.1016/j.oraloncology.2014.02.006>.
6. Liu Q, Bode AM, Chen X, Luo X. Metabolic reprogramming in nasopharyngeal carcinoma: Mechanisms and therapeutic opportunities. *Biochimica et Biophysica Acta (BBA) - Reviews on Cancer*. 2023;1878(6): 189023. <https://doi.org/https://doi.org/10.1016/j.bbcan.2023.189023>.
7. Tseng C-H. Metformin and risk of developing nasopharyngeal cancer in patients with type 2 diabetes mellitus. *Metabolism*. 2018;85: 223-226. <https://doi.org/https://doi.org/10.1016/j.metabol.2018.04.009>.
8. Benedetti R, Benincasa G, Glass K, et al. Effects of novel SGLT2 inhibitors on cancer incidence in hyperglycemic patients: a meta-analysis of randomized clinical trials. *Pharmacological Research*. 2022;175: 106039. <https://doi.org/https://doi.org/10.1016/j.phrs.2021.106039>.
9. Oscar Hou In C, Jing N, Raymond Ngai Chiu C, et al. Lower risks of sodium glucose cotransporter 2 (SGLT2) inhibitors compared to dipeptidyl peptidase-4 (DPP4) inhibitors for new-onset non-alcoholic fatty liver disease and hepatocellular carcinoma in type 2 diabetes mellitus: A population-based study. *medRxiv*. 2022: 2022.2008.2016.22278847. <https://doi.org/10.1101/2022.08.16.22278847>.
10. Chung CT, Lakhani I, Chou OHI, et al. Sodium-glucose cotransporter 2 inhibitors versus dipeptidyl peptidase 4 inhibitors on new-onset overall cancer in Type 2 diabetes mellitus: A population-based study. *Cancer Med*. 2023;12(11): 12299-12315. <https://doi.org/10.1002/cam4.5927>.
11. Zhang J, Jia L, Lin W, et al. Epstein-Barr Virus-Encoded Latent Membrane Protein 1 Upregulates Glucose Transporter 1 Transcription via the mTORC1/NF-κB Signaling Pathways. *J Virol*. 2017;91(6). <https://doi.org/10.1128/jvi.02168-16>.
12. Rudrapatna VA, Glicksberg BS, Butte AJ. Utility of routinely collected electronic health records data to support effectiveness evaluations in inflammatory bowel disease: a pilot study of tofacitinib. *BMJ Health Care Inform*. 2021;28(1). <https://doi.org/10.1136/bmjhci-2021-100337>.
13. Gao X, Zhang N, Lu L, et al. New-onset syncope in diabetic patients treated with sodium-glucose cotransporter-2 inhibitors versus dipeptidyl peptidase-4 inhibitors: a Chinese population-based cohort study. *European Heart Journal - Cardiovascular Pharmacotherapy*. 2023: pvad086. <https://doi.org/10.1093/ehjcvp/pvad086>.

14. Chou OHI, Zhou J, V Mui J, et al. Lower risks of new-onset acute pancreatitis and pancreatic cancer in sodium glucose cotransporter 2 (SGLT2) inhibitors compared to dipeptidyl peptidase-4 (DPP4) inhibitors: A propensity score-matched study with competing risk analysis. *Diabetes Epidemiology and Management*. 2023;9: 100115. <https://doi.org/https://doi.org/10.1016/j.deman.2022.100115>.
15. Lee TTL, Chan SCL, Chou OHI, et al. Initiation of warfarin is associated with decreased mortality in patients with infective endocarditis: A population-based cohort study. *Thromb Res*. 2023;233: 1-9. <https://doi.org/10.1016/j.thromres.2023.11.009>.
16. Soliman AR, Fathy A, Khashab S, Shaheen N. Comparison of abbreviated modification of diet in renal disease formula (aMDRD) and the Cockcroft-Gault adjusted for body surface (aCG) equations in stable renal transplant patients and living kidney donors. *Ren Fail*. 2013;35(1): 94-97. <https://doi.org/10.3109/0886022x.2012.731970>.
17. Chen MC, Feng IJ, Lu CH, et al. The incidence and risk of second primary cancers in patients with nasopharyngeal carcinoma: a population-based study in Taiwan over a 25-year period (1979-2003). *Ann Oncol*. 2008;19(6): 1180-1186. <https://doi.org/10.1093/annonc/mdn003>.
18. Austin PC. An Introduction to Propensity Score Methods for Reducing the Effects of Confounding in Observational Studies. *Multivariate Behav Res*. 2011;46(3): 399-424. <https://doi.org/10.1080/00273171.2011.568786>.
19. Austin PC, Stuart EA. Moving towards best practice when using inverse probability of treatment weighting (IPTW) using the propensity score to estimate causal treatment effects in observational studies. *Stat Med*. 2015;34(28): 3661-3679. <https://doi.org/10.1002/sim.6607>.
20. Avagyan V, Vansteelandt S. Stable inverse probability weighting estimation for longitudinal studies. *Scandinavian Journal of Statistics*. 2021;48(3): 1046-1067. <https://doi.org/https://doi.org/10.1111/sjos.12542>.
21. Chen YP, Chan ATC, Le QT, Blanchard P, Sun Y, Ma J. Nasopharyngeal carcinoma. *Lancet*. 2019;394(10192): 64-80. [https://doi.org/10.1016/s0140-6736\(19\)30956-0](https://doi.org/10.1016/s0140-6736(19)30956-0).
22. Wang X, Sun H, Li L, Gan Z, Wu X, Du J. Changing patterns of nasopharyngeal carcinoma incidence in Hong Kong: a 30-year analysis and future projections. *BMC Cancer*. 2023;23(1): 761. <https://doi.org/10.1186/s12885-023-11296-1>.
23. Basak D, Gamez D, Deb S. SGLT2 Inhibitors as Potential Anticancer Agents. *Biomedicines*. 2023;11(7). <https://doi.org/10.3390/biomedicines11071867>.
24. Wang Y, Mang X, Li D, et al. Cold atmospheric plasma sensitizes head and neck cancer to chemotherapy and immune checkpoint blockade therapy. *Redox Biology*. 2024;69: 102991. <https://doi.org/https://doi.org/10.1016/j.redox.2023.102991>.
25. Li H, Chen X, Yu Y, et al. Metformin inhibits the growth of nasopharyngeal carcinoma cells and sensitizes the cells to radiation via inhibition of the DNA damage repair pathway. *Oncol Rep*. 2014;32(6): 2596-2604. <https://doi.org/10.3892/or.2014.3485>.
26. Yen YC, Lin C, Lin SW, Lin YS, Weng SF. Effect of metformin on the incidence of head and neck cancer in diabetics. *Head Neck*. 2015;37(9): 1268-1273. <https://doi.org/10.1002/hed.23743>.
27. Zucchetto A, Taborelli M, Bosetti C, et al. Metabolic disorders and the risk of nasopharyngeal carcinoma: a case-control study in Italy. *Eur J Cancer Prev*. 2018;27(2): 180-183. <https://doi.org/10.1097/cej.0000000000000286>.

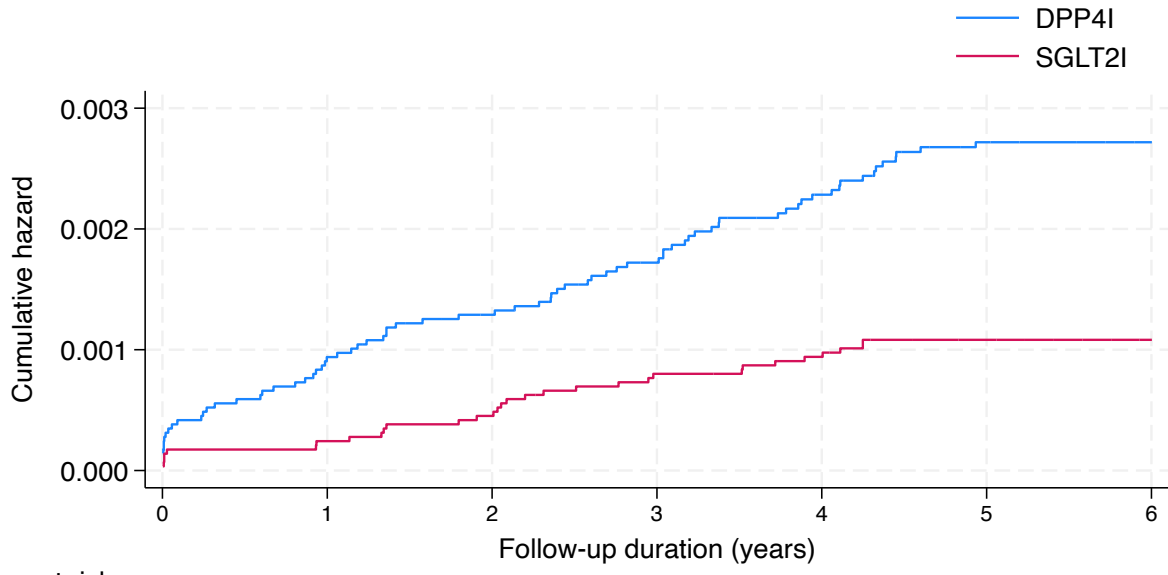
28. Peng H, Chen L, Zhang Y, et al. Prognostic value of Diabetes in Patients with Nasopharyngeal Carcinoma Treated with Intensity-Modulated Radiation Therapy. *Scientific Reports*. 2016;6(1): 22200. <https://doi.org/10.1038/srep22200>.
29. Figueiredo RA, Weiderpass E, Tajara EH, et al. Diabetes mellitus, metformin and head and neck cancer. *Oral Oncol*. 2016;61: 47-54. <https://doi.org/10.1016/j.oraloncology.2016.08.006>.
30. Kao LT, Hung SH, Kao PF, Liu JC, Lin HC. Inverse association between statin use and head and neck cancer: Population-based case-control study in Han population. *Head Neck*. 2019;41(5): 1193-1198. <https://doi.org/10.1002/hed.25501>.
31. Gupta A, Stokes W, Eguchi M, et al. Statin use associated with improved overall and cancer specific survival in patients with head and neck cancer. *Oral Oncol*. 2019;90: 54-66. <https://doi.org/10.1016/j.oraloncology.2019.01.019>.
32. Lebo NL, Griffiths R, Hall S, Dimitroulakos J, Johnson-Obaseki S. Effect of statin use on oncologic outcomes in head and neck squamous cell carcinoma. *Head Neck*. 2018;40(8): 1697-1706. <https://doi.org/10.1002/hed.25152>.
33. Dutka M, Bobiński R, Francuz T, et al. SGLT-2 Inhibitors in Cancer Treatment-Mechanisms of Action and Emerging New Perspectives. *Cancers (Basel)*. 2022;14(23). <https://doi.org/10.3390/cancers14235811>.
34. Nasiri AR, Rodrigues MR, Li Z, Leitner BP, Perry RJ. SGLT2 inhibition slows tumor growth in mice by reversing hyperinsulinemia. *Cancer & Metabolism*. 2019;7(1): 10. <https://doi.org/10.1186/s40170-019-0203-1>.
35. Zhao M, Chen J, Yuan Y, et al. Dipeptidyl peptidase-4 inhibitors and cancer risk in patients with type 2 diabetes: a meta-analysis of randomized clinical trials. *Scientific Reports*. 2017;7(1): 8273. <https://doi.org/10.1038/s41598-017-07921-2>.
36. McGuire DK, Shih WJ, Cosentino F, et al. Association of SGLT2 Inhibitors With Cardiovascular and Kidney Outcomes in Patients With Type 2 Diabetes: A Meta-analysis. *JAMA Cardiol*. 2021;6(2): 148-158. <https://doi.org/10.1001/jamacardio.2020.4511>.



**Figure 1. Procedures of data processing**

SGLT2i: Sodium-glucose cotransporter-2 inhibitors; DPP4i: Dipeptidyl peptidase-4 inhibitors; AMDRD: abbreviated modification of diet in renal disease.

New onset nasopharyngeal cancer

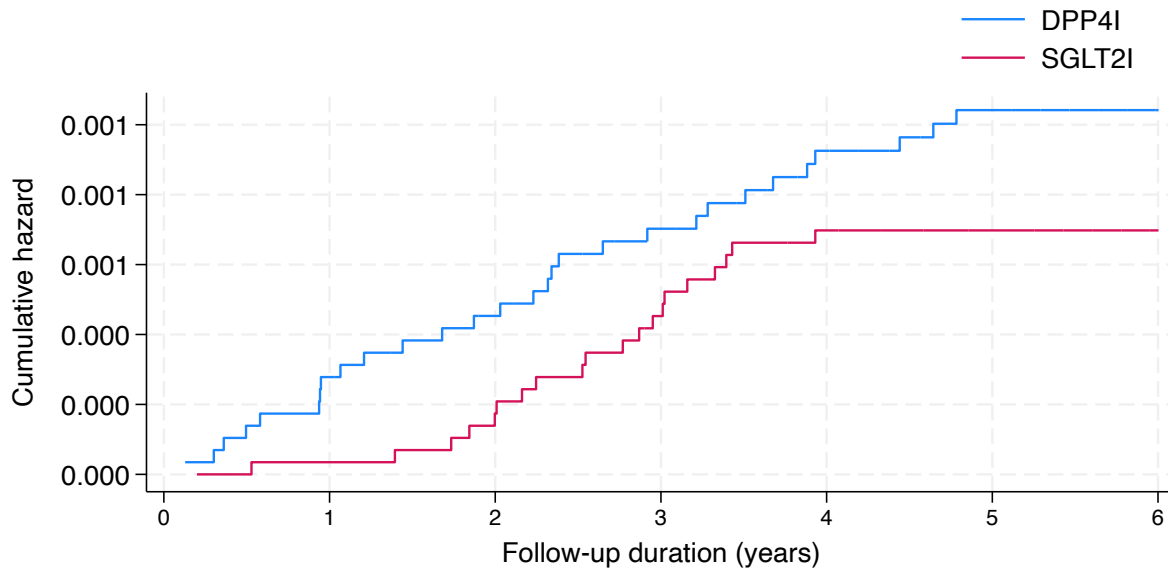


Number at risk

DPP4I	28778	28679	28200	27234	25807	24524	160
SGLT2I	28778	28770	28726	28612	28395	28016	162

Cumulative incidence curve by drug use after propensity score matching

New onset salivary gland and other head/neck cancer

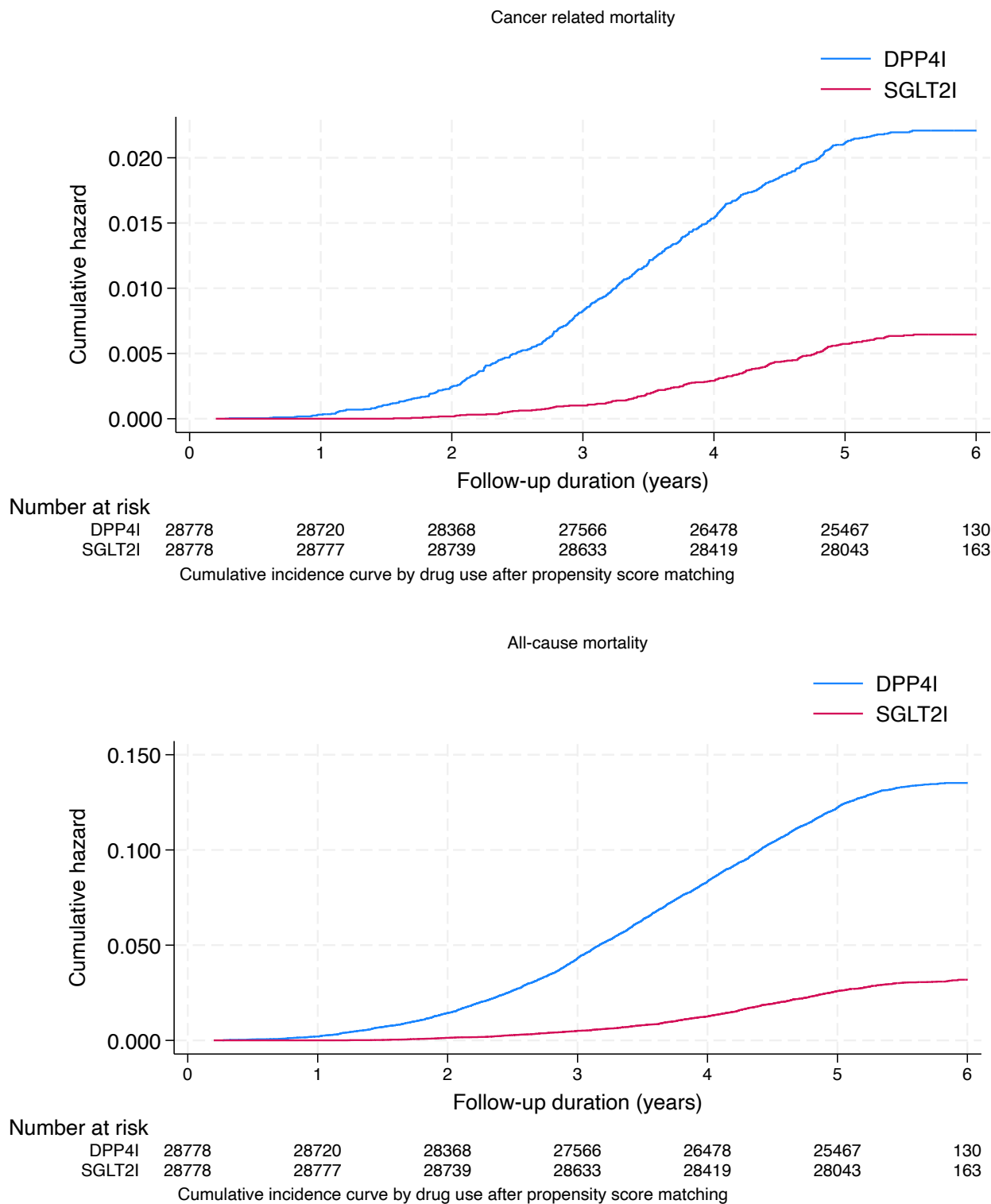


Number at risk

DPP4I	28778	28715	28359	27552	26461	25447	130
SGLT2I	28778	28776	28734	28623	28404	28029	163

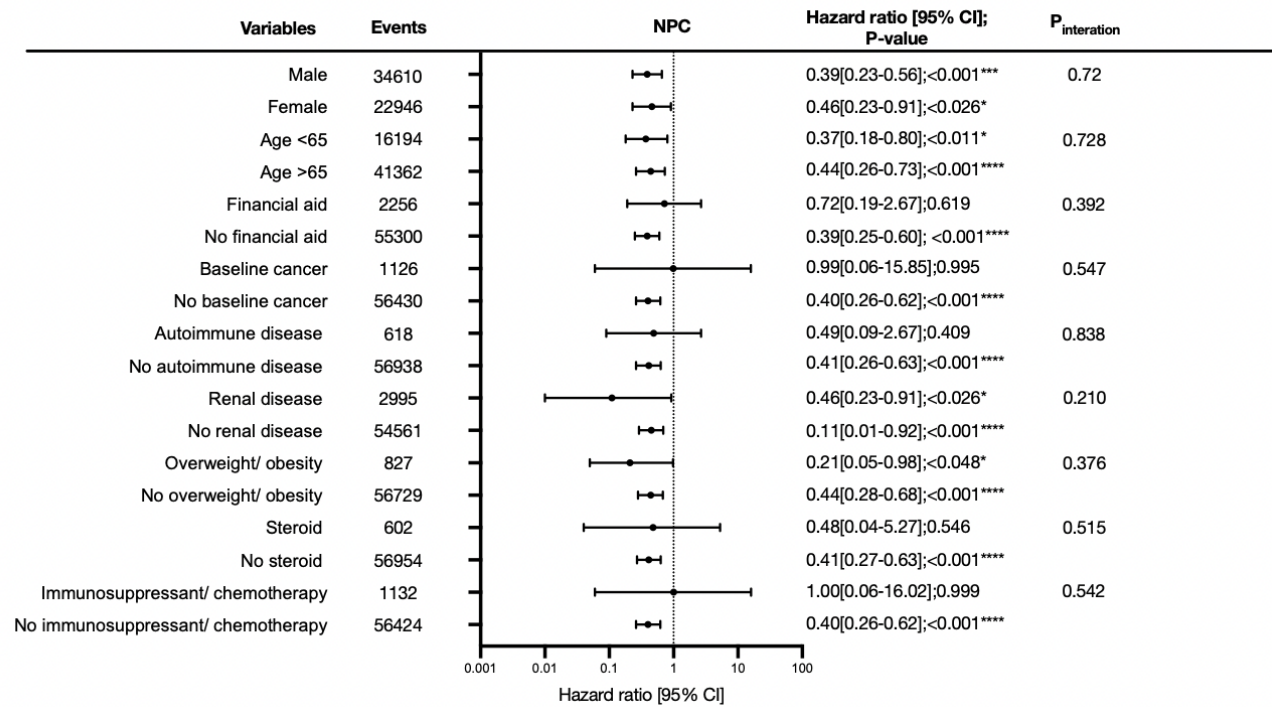
Cumulative incidence curve by drug use after propensity score matching





**Figure 2. Cumulative incidence curves for new onset NPC, other H&N cancer, cancer-related mortality, and all-cause mortality stratified by drug exposure of SGLT2I and DPP4I after propensity score matching (1:1)**

SGLT2I: Sodium-glucose cotransporter-2 inhibitors; DPP4I: Dipeptidyl peptidase-4 inhibitors. NPC: nasopharyngeal carcinoma; H&N: head and neck.



**Figure 3. Subgroup analyses for SGLT2I v.s. DPP4I exposure predict new onset NPC in the matched cohort.**

\* For  $p \leq 0.05$ , \*\* for  $p \leq 0.01$ , \*\*\* for  $p \leq 0.001$ ; CI: confidence interval; SGLT2I: Sodium-glucose cotransporter-2 inhibitors; DPP4I: Dipeptidyl peptidase-4 inhibitors; HR: Hazard ratio; NPC: nasopharyngeal carcinoma.

**Table 1. Baseline and clinical characteristics of patients with SGLT2I v.s. DPP4I use before and after propensity score matching (1:1).**

\* for SMD  $\geq 0.1$ ; SGLT2I: sodium glucose cotransporter-2 inhibitor; DPP4I: dipeptidyl peptidase-4 inhibitor; MDRD: modification of diet in renal disease; ACEI: angiotensin-converting enzyme inhibitors; ARB: angiotensin II receptor blockers.

Characteristics	Before matching				After matching			
	All (N=75884) Mean(SD);N or Count(%)	SGLT2I users (N=28778) Mean(SD);N or Count(%)	DPP4I users (N=47106) Mean(SD);N or Count(%)	SMD	All (N=57556) Mean(SD);N or Count(%)	SGLT2I users (N=28778) Mean(SD);N or Count(%)	DPP4I users (N=28778) Mean(SD);N or Count(%)	SMD
<b>Demographics</b>								
Male gender	42323(55.77%)	17127(59.51%)	25196(53.48%)	0.12	34610(60.13%)	17127(59.51%)	17483(60.75%)	0.03
Female gender	33561(44.22%)	11651(40.48%)	21910(46.51%)	0.12	22946(39.86%)	11651(40.48%)	11295(39.24%)	0.03
Baseline age, years	62.4(12.8);n=75884	57.9(11.3);n=28778	65.1(12.9);n=47106	0.6*	58.7(11.2);n=57556	57.9(11.3);n=28778	59.5(11.0);n=28778	0.14*
Financial aid	2790(3.67%)	1167(4.05%)	1623(3.44%)	0.03	2256(3.91%)	1167(4.05%)	1089(3.78%)	0.01
<b>Past comorbidities</b>								
Charlson's standard comorbidity index	2.0(1.5);n=75884	1.6(1.3);n=28778	2.3(1.6);n=47106	0.58	1.6(1.2);n=57556	1.6(1.3);n=28778	1.7(1.2);n=28778	0.08
Duration from earliest diabetes diagnosis date to baseline date, day	6.5(4.9);n=75884	6.4(4.8);n=28778	6.53(4.97);n=47106	0.01	6.4(4.7);n=57556	6.5(4.9);n=28778	6.3(4.6);n=28778	0.05
Number of hospitalizations	1.2(0.8);n=75884	1.3(1.1);n=28778	1.2(0.6);n=47106	0.17	1.3(1.0);n=57556	1.3(1.1);n=28778	1.2(0.8);n=28778	0.12*
Hyperlipidaemia	55285(72.85%)	21876(76.01%)	33409(70.92%)	0.12	43800(76.09%)	21876(76.01%)	21924(76.18%)	<0.01
Hypertension	43161(56.87%)	19179(66.64%)	23982(50.91%)	0.32*	39318(68.31%)	19179(66.64%)	20139(69.98%)	0.07
Diabetic retinopathy	5309(6.99%)	1953(6.78%)	3356(7.12%)	0.01	3759(6.53%)	1953(6.78%)	1806(6.27%)	0.02
Diabetic nephropathy	934(1.23%)	172(0.59%)	762(1.61%)	0.1	343(0.59%)	172(0.59%)	171(0.59%)	<0.01
Diabetic neuropathy	1842(2.42%)	680(2.36%)	1162(2.46%)	0.01	1343(2.33%)	680(2.36%)	663(2.30%)	<0.01
Baseline cancer	1940(2.55%)	564(1.95%)	1376(2.92%)	0.06	1126(1.95%)	564(1.95%)	562(1.95%)	<0.01
Renal diseases	6096(8.03%)	1536(5.33%)	4560(9.68%)	0.17	2995(5.20%)	1536(5.33%)	1459(5.06%)	0.01
Liver diseases	2369(3.12%)	1053(3.65%)	1316(2.79%)	0.05	2044(3.55%)	1053(3.65%)	991(3.44%)	0.01
Heart failure	2505(3.30%)	757(2.63%)	1748(3.71%)	0.06	1492(2.59%)	757(2.63%)	735(2.55%)	<0.01
Acute myocardial infarction	2158(2.84%)	955(3.31%)	1203(2.55%)	0.05	1886(3.27%)	955(3.31%)	931(3.23%)	<0.01
Ischemic heart disease	7860(10.35%)	3619(12.57%)	4241(9.00%)	0.12	6813(11.83%)	3619(12.57%)	3194(11.09%)	0.05
Atrial fibrillation	1979(2.60%)	656(2.27%)	1323(2.80%)	0.03	1300(2.25%)	656(2.27%)	644(2.23%)	<0.01
Stroke/transient ischemic attack	2418(3.18%)	739(2.56%)	1679(3.56%)	0.06	1467(2.54%)	739(2.56%)	728(2.52%)	<0.01
Autoimmune disease	809(1.06%)	312(1.08%)	497(1.05%)	<0.01	618(1.07%)	312(1.08%)	306(1.06%)	<0.01
HPV infection	128(0.16%)	45(0.15%)	83(0.17%)	<0.01	90(0.15%)	45(0.15%)	45(0.15%)	<0.01
Primary immunodeficiency	492(0.64%)	105(0.36%)	387(0.82%)	0.06	210(0.36%)	105(0.36%)	105(0.36%)	<0.01
Overweight, obesity and hyperalimentation required treatment	576(0.75%)	421(1.46%)	155(0.32%)	0.12	827(1.43%)	421(1.46%)	406(1.41%)	<0.01
Alcohol dependence required treatment	169(0.22%)	42(0.14%)	127(0.26%)	0.03	84(0.14%)	42(0.14%)	42(0.14%)	<0.01
Tobacco dependence required treatment	1066(1.40%)	163(0.56%)	903(1.91%)	0.12	326(0.56%)	163(0.56%)	163(0.56%)	<0.01
<b>Medications</b>								
Number of anti-diabetic drug classes	3.4(0.9);n=75884	3.5(1.0);n=28778	3.4(0.8);n=47106	0.24	3.5(0.9);n=57556	3.55(0.96);n=28778	3.55(0.91);n=28778	<0.01
Metformin	68140(89.79%)	26863(93.34%)	41277(87.62%)	0.21	53814(93.49%)	26863(93.34%)	26951(93.65%)	0.01
Sulphonylurea	58324(76.85%)	20695(71.91%)	37629(79.88%)	0.19	42438(73.73%)	20695(71.91%)	21743(75.55%)	0.08
Insulin	38694(50.99%)	14795(51.41%)	23899(50.73%)	0.01	29828(51.82%)	14795(51.41%)	15033(52.23%)	0.02
Acarbose	2043(2.69%)	1113(3.86%)	930(1.97%)	0.11	2135(3.70%)	1113(3.86%)	1022(3.55%)	0.02
Thiozolidinedone	15218(20.05%)	7849(27.27%)	7369(15.64%)	0.29*	14751(25.62%)	7849(27.27%)	6902(23.98%)	0.08

Glucagon-like peptide-1 receptor agonists	2523(3.32%)	1967(6.83%)	556(1.18%)	0.29*	3670(6.37%)	1967(6.83%)	1703(5.91%)	0.04
ACEI/ARB	26842(35.37%)	10601(36.83%)	16241(34.47%)	0.05	22617(39.29%)	10601(36.83%)	12016(41.75%)	0.1
Diuretics	41874(55.18%)	20840(72.41%)	21034(44.65%)	0.59*	41039(71.30%)	20840(72.41%)	20199(70.18%)	0.05
Statins and fibrates	40813(53.78%)	18266(63.47%)	22547(47.86%)	0.32*	36160(62.82%)	18266(63.47%)	17894(62.17%)	0.03
Systemic steroids	434(0.57%)	306(1.06%)	128(0.27%)	0.1	602(1.04%)	306(1.06%)	296(1.02%)	<0.01
Immunosuppressant and chemotherapy	2536(3.34%)	564(1.95%)	1972(4.18%)	0.13	1132(1.96%)	564(1.95%)	568(1.97%)	<0.01
<b>Calculated biomarkers</b>								
Abbreviated MDRD, mL/min/1.73m <sup>2</sup>	80.8(28.4);n=63 103	89.8(24.1);n=24 210	75.2(29.4);n=38 893	0.54*	86.6(25.8);n=48 318	89.8(24.1);n=24 210	86.5(27.0);n=24 108	0.11*
<b>Lipid profiles</b>								
Time weighted mean of triglyceride, mmol/L	1.8(1.0);n=3885 7	1.9(1.0);n=1739 4	1.8(1.0);n=2146 3	0.05	1.9(1.0);n=3251 8	1.86(1.0);n=173 94	1.87(1.01);n=15 124	<0.01
Time weighted mean of low-density lipoprotein, mmol/L	2.3(0.6);n=3648 8	2.3(0.56);n=162 68	2.34(0.59);n=20 220	0.07	2.3(0.6);n=3070 1	2.3(0.56);n=162 68	2.31(0.58);n=14 433	0.01
Time weighted mean of high-density lipoprotein (this article was not certified by peer review) is the author/funder, who has granted medRxiv a license to display the preprint in perpetuity. It is made available under a CC-BY-NC 4.0 International license.	1.2(0.2);n=3833 4	1.16(0.19);n=17 66	1.18(0.21);n=21 77	0.07	1.2(0.2);n=3229 260	1.16(0.19);n=17 30	1.16(0.2);n=150 30	<0.01
Time weighted mean of total cholesterol, mmol/L	4.3(0.6);n=3889 8	4.3(0.6);n=1742 4	4.4(0.6);n=2147 4	0.08	4.3(0.6);n=3256 0	4.3(0.6);n=1742 4	4.32(0.63);n=15 136	0.02
<b>Glucose tests</b>								
Time weighted mean of HbA1C, %	7.9(1.4);n=4617 4	7.9(1.4);n=1983 5	7.8(1.4);n=2633 9	0.06	7.9(1.4);n=3826 7	7.9(1.4);n=1983 5	7.8(1.3);n=1843 2	0.05
Time weighted mean of fasting glucose, mmol/L	7.8(3.0);n=4283 9	7.9(2.9);n=1857 6	7.8(3.0);n=2426 3	0.03	7.9(3.1);n=3530 9	7.9(2.9);n=1857 6	7.8(3.2);n=1673 3	0.02

**Table 2. Incidence and multivariate Cox regression models of new onset NPC, other H&N cancer and cancer-related mortality in the cohort after 1:1 propensity score matching.**

\* For  $p \leq 0.05$ , \*\* for  $p \leq 0.01$ , \*\*\* for  $p \leq 0.001$ ; CI: confidence interval; SGLT2i: sodium glucose cotransporter-2 inhibitor; DPP4i: dipeptidyl peptidase-4 inhibitor; IQR: Interquartile range.

Adjusted for significant demographics, past comorbidities, duration of diabetes mellitus, and number of prior hospitalizations, number of anti-diabetic drugs, non-SGLT2i/DPP4i medications, abbreviated MDRD, HbA1c, fasting glucose, lipid profile.

<b>NPC</b>	<b>Number of patients</b>	<b>Number of events</b>	<b>Total person-year</b>	<b>Follow-up duration, year [IQR]</b>	<b>Incidence per 100,000 person-year [95% CI]</b>	<b>Adjusted hazard ratio [95% CI]</b>	<b>P-value</b>
<b>DPP4i</b>	28778	75	155176.8	5.4[0.7]	48.33[38.02-60.58]	1 [Reference]	NA
<b>SGLT2i</b>	28778	31	159532.3	5.5[0.4]	19.43[13.20-27.58]	0.41[0.21-0.81]	0.0095**
<b>Other H&amp;N cancer</b>	<b>Number of patients</b>	<b>Number of events</b>	<b>Total person-year</b>	<b>Follow-up duration, year [IQR]</b>	<b>Incidence per 100,000 person-year [95% CI]</b>	<b>Adjusted hazard ratio [95% CI]</b>	<b>P value</b>
<b>DPP4i</b>	28778	30	155306.8	5.4[0.7]	19.32[13.03-27.58]	1 [Reference]	NA
<b>SGLT2i</b>	28778	20	159586.7	5.5[0.4]	12.53[7.66-19.36]	1.00[0.26-3.92]	0.9985
<b>Cancer-related mortality</b>	<b>Number of patients</b>	<b>Number of events</b>	<b>Total person-year</b>	<b>Follow-up duration, year [IQR]</b>	<b>Incidence per 100,000 person-year [95% CI]</b>	<b>Adjusted hazard ratio [95% CI]</b>	<b>P value</b>
<b>DPP4i</b>	28778	719	155377.9	5.4[0.7]	462.74[429.53-497.84]	1 [Reference]	NA
<b>SGLT2i</b>	28778	180	159632.9	5.5[0.4]	112.76[96.89-130.49]	0.42[0.29-0.60]	<0.0001***

medRxiv preprint doi: <https://doi.org/10.1101/2024.01.14.24301285>; this version posted January 15, 2024. The copyright holder for this preprint (which was not certified by peer review) is the author/funder, who has granted medRxiv a license to display the preprint in perpetuity.

It is made available under a [CC-BY-NC 4.0 International license](https://creativecommons.org/licenses/by-nc/4.0/).