

1 **Article type: Original Article**

2 **Title: Assessing the Incidence of Postoperative Diabetes in Gastric Cancer**

3 **Patients: A Comparative Study of Roux-en-Y Gastrectomy and Other Surgical**

4 **Reconstruction Techniques**

5 Onishi Tatsuki^{1,2*}

6 ¹Data Science and AI Innovation Research Promotion Center, Shiga University, Hikone,

7 Shiga, Japan

8 ²Department of Anesthesia, Juntendo University Shizuoka Hospital, Izunokuni,

9 Shizuoka, Japan

10

11

12 *Corresponding author:

13 Onishi Tatsuki

14 Email: tatsuki-onishi@biwako.shiga-u.ac.jp

15

16 Running title: Postoperative Diabetes in Gastric Cancer Patients

17

18 **Acknowledgements**

19 Tatsuyoshi Ikenoue at Shiga University, Data Science and AI Innovation Research

20 Promotion Center

21

22 **Abstract**

23 **Study objective:** Sleeve gastrectomy is effective in morbid obesity, and it improves

24 glucose homeostasis. In gastric cancer patients with type 2 diabetes mellitus,

25 gastrectomy, including total gastrectomy (TG), is beneficial for glycaemic control.

26 However, the effects of gastrectomy and different reconstructive techniques on the

27 incidence of postoperative diabetes in gastric cancer patients are unclear. This study

28 investigated the development of new-onset diabetes in these patients, focusing on

29 different reconstruction methods.

30 **Design:** A comparative study

31 **Setting:** Electrical medical records

32 **Patients:** This study included 715 patients without diabetes who underwent TG at

33 Tokyo Metropolitan Bokutoh Hospital between August 2005 and March 2019.

34 **Interventions:** Patients underwent reconstruction by Roux-en-Y (RY) or other surgical

35 techniques (OT), with diabetes onset determined by HbA1c levels or medical records.

36 **Measurements:** Analyses included two-sample t-tests, chi-squared tests, and the

37 Kaplan-Meier method with log-rank tests to compare the onset curves between the two
38 groups.

39 **Main Results:** Stratified data analysis compared the RY and OT reconstruction methods.

40 Log-rank test results ($P=0.0217$) indicated a statistically significant difference in the

41 incidence of new-onset diabetes between RY and OT groups in gastric cancer patients.

42 **Conclusion:** This first-of-its-kind study provides insight into how different methods of

43 gastric reconstruction affect postoperative diabetes. The results suggest significant

44 differences in new-onset diabetes mellitus after surgery based on the reconstruction

45 method. This research highlights the need for careful surgical planning to consider

46 potential postoperative diabetes, particularly in patients with a family history of diabetes

47 mellitus. Future studies should investigate the role of gut microbiota and other

48 reconstructive techniques, such as laparoscopic jejunal interposition, in developing

49 postoperative diabetes.

50

51 **Keywords:** Diabetes mellitus, gastrectomy, gastric cancer surgery, glucose metabolism,

52 postoperative diabetes onset, surgery outcomes

53

54 **1. Introduction**

55 Gastrectomy, particularly sleeve gastrectomy (SG), has been shown to be an
56 effective surgical option for morbid obesity due to its low complication rates and
57 significant weight loss results [1–5]. SG results in alteration of the appetite through the
58 regulation of gut hormones, resulting in decreased hunger and increased satiety [6]. SG
59 also improves glucose homeostasis through resulting changes in gut hormone levels [7].
60 Specifically, laparoscopic SG results in significant improvement in glucose metabolism
61 in morbidly obese patients and has been found to stop the development of diabetes at a
62 high rate [8]. SG has been shown to improve blood glucose independently of weight
63 loss by restoring hepatic insulin sensitivity [9]. However, the effects of gastrectomy on
64 non-obese patients with type 2 diabetes are less clear, with some studies suggesting that
65 gastrectomy may improve diabetic status [10].

66 In patients with gastric cancer diagnosed with type 2 diabetes mellitus (T2DM),
67 gastrectomy has been found to have a positive impact on their glycemic control.
68 Improvements in glycemic control, or even diabetes remission, have been reported after
69 gastrectomy [10–15]. The extent of the gastrectomy, duration of diabetes, and method of
70 reconstruction have been identified as important factors influencing the improvements
71 in glycemic control [10–14]. Although the mechanisms underlying these effects are not
72 fully understood, oncometabolic surgeries, including gastrectomy, have been suggested

73 as a potential treatment for T2DM in patients with gastric cancer [16].

74 Studies have shown that total gastrectomy (TG) is associated with improved
75 glucose metabolism in patients with gastric cancer, resulting in a lower rate of newly
76 diagnosed diabetes after surgery [22]. However, the effects of gastrectomy on glucose
77 metabolism in diabetic and non-diabetic patients have been inconsistent, with some
78 studies reporting significant reductions in fasting blood glucose levels after gastrectomy
79 [23]. Furthermore, SG has been associated with significant reductions in HbA1c levels
80 in non-diabetic patients, suggesting its possible role in the prevention of type 2 diabetes
81 [24].

82 In terms of reconstruction after partial gastrectomy in patients with gastric
83 cancer, both Roux-en-Y and Billroth II reconstructions have been considered acceptable
84 options [17]. Roux-en-Y reconstruction is often preferred for gastric cancer patients,
85 given that this procedure can lead to decreased reflux gastritis and esophagitis,
86 decreased probability of cancer recurrence, and decreased incidence of surgical
87 complications [18]. Roux-en-Y reconstruction has also been found to be as effective as
88 other methods with respect to nutritional status and postoperative outcomes [19]. In
89 comparison to Billroth II reconstruction, Roux-en-Y has been shown to have similar
90 postoperative complications and better long-term outcomes [20]. Furthermore,

91 Roux-en-Y reconstruction without cutting has been the preferred method in cases of
92 gastritis, bile reflux, and gastric residuals [21].

93 Various studies have examined the impact of different reconstructive
94 procedures on postoperative complications in gastric cancer patients. It has been found
95 that long-limb Roux-en-Y bypass reconstruction could lead to improved glycemic
96 control [25], and it has been observed that pre-existing diabetes is associated with
97 postoperative complications [10, 26]. Several studies further support the benefits of
98 Roux-en-Y reconstruction, with some indicating it to be more effective than Billroth II
99 reconstruction [27, 28]. Additionally, significant improvements in diabetes control have
100 been associated with Roux-en-Y reconstruction [25, 28].

101 Given these, the aim of this research was to investigate the incidence of
102 new-onset diabetes in patients with gastric cancer after surgery and how this incidence
103 varies with different types of surgical reconstruction, namely, the Roux-en-Y procedure
104 and other alternative reconstruction techniques. While studies have investigated how
105 surgical treatment for gastric cancer affects existing diabetes [25, 28], none have
106 investigated the development of new-onset diabetes in patients without diabetes; to the
107 best of our knowledge, this is the very first study to do so. Findings from this study
108 could contribute valuable insights into the postoperative outcomes associated with

109 different gastric reconstruction techniques. Such insights are vital for guiding clinical
110 decisions and optimizing patient care, particularly in the context of mitigating the risk
111 of developing diabetes after gastric surgery. Moreover, findings from this study are
112 expected to have significant implications for both clinical practice and future research in
113 the field of gastric surgery and diabetes prevention.

114

115 **2. Materials and Methods**

116 *2.1 Study participants*

117 A total of 715 patients who underwent TG as the definitive procedure and as a
118 standby procedure at the Tokyo Metropolitan Bokutoh Hospital between August 2005
119 and March 2019 and were not diagnosed with diabetes at the time of surgery were
120 included in the study (Table 1). The study was approved by the institution's ethics
121 committee (30-110) and conducted in accordance with the Declaration of Helsinki.

122

123 *2.2 Methods*

124 Whether the patients would undergo reconstruction through Roux-en-Y (RY) or
125 other surgical techniques (OT) was chosen based on previous studies, and the patients
126 were grouped accordingly. The definite onset of diabetes in the patients was considered

127 based on the previous electronic medical records or when their HbA1c value was
128 greater than 6.5 based on laboratory testing. The competing outcome was death. After a
129 meticulous data curation process using Python 3.10 that corrects for missing values,
130 manages outliers, and ensures appropriate data types, we obtained a data set that was
131 optimized for analysis and free of common data inconsistencies.

132 Furthermore, basic statistical measures such as the mean, median, and standard
133 deviation were computed using Python 3.10. Two sample t-test and Chi-squared test for
134 variables in characteristics were used to assess the difference in demographics of the
135 two groups using Python 3.10. In addition, the Kaplan–Meier method was employed to
136 estimate the onset function from the time-event data present and was augmented with
137 log-rank tests to help compare the onset curves between the RY and OT groups using
138 Python 3.10.

139

140 **3. Results**

141 The characteristics of the patients included in the study at the time of the
142 surgery are shown in Table 1.

143 In the present study, following rigorous data pre-processing, a Kaplan–Meier
144 onset curve was constructed to estimate the function delineating the interval between the

145 total gastrectomy and the subsequent emergence of new-onset diabetes postoperatively
146 (Fig. 1). This nonparametric approach provides a survival function, articulated as a step
147 function, which quantifies the probability of patients remaining free from diabetes up to
148 a specific time point following surgery.

149 The analytical framework was further refined by stratifying the data to draw
150 comparisons between the two types of reconstruction methods applied, the RY and OT.
151 This stratification was imperative for a granular comparison of the incidence rates of
152 postoperative diabetes associated with these distinct reconstructive procedures.

153 Kaplan–Meier curves were employed for each stratified group, offering a visual
154 representation of the temporal pattern of diabetes onset post-surgery corresponding to
155 each surgical technique. The rate of diabetes onset was inferred from the slope of these
156 curves, with a steeper decline indicating a higher incidence within the respective group.

157 To statistically ascertain the significance of the disparities observed in the
158 incidence curves between the groups, a log-rank test was conducted. The resultant
159 *P*-value from this log-rank test was found to be 0.0217, which denotes a statistically
160 significant difference in the incidence of new-onset diabetes post-surgery between those
161 who underwent RY and those subjected to OT in patients with gastric cancer. These
162 findings indicate a difference in the incidence of postoperative diabetes based on the

163 type of gastric reconstruction method employed.

164

165 **4. Discussion**

166 This study is the first to provide insights into how different methods of gastric
167 reconstruction might affect the risk of developing postoperative diabetes. This analysis
168 is important for understanding the temporal dynamics of diabetes development after
169 gastric surgery and has significant implications for surgical planning and patient
170 management to prevent postoperative diabetes. A thorough approach to data
171 pre-processing and the use of robust statistical methods will ensure the reliability and
172 validity of these findings in the wider context of gastric surgery and diabetes research.

173 Although the results of this study show that RY is associated with a higher
174 incidence of new-onset postoperative diabetes compared with OT, these data could be
175 improved by comparison with a population that has not undergone total gastrectomy as
176 a control. Nevertheless, the finding that new-onset diabetes mellitus after surgery differs
177 according to the method of gastric cancer reconstruction should be an important
178 consideration in surgical selection, especially in cases with a strong family history of
179 diabetes mellitus.

180 Surgery for gastric cancer, particularly gastrectomy, has been shown to

181 significantly alter the gut microbiota, leading to dysbiosis characterized by changes in
182 bacterial content and gene function [31, 32]. This dysbiosis is associated with intestinal
183 inflammation, overgrowth of small intestinal bacteria and an increased risk of colorectal
184 cancer [32]. Specific changes in the gut microbiota after surgery include increased
185 species richness, decreased butyrate-producing bacteria, and enrichment of certain
186 symbiotic bacteria [33]. The abundance of specific gut bacterial genera has been found
187 to correlate with the population of peripheral immune cells [33-35].

188 This study did not include an assessment of other determinants that could
189 potentially influence the development of diabetes mellitus, including lifestyle choices
190 and genetic predisposition. It is plausible that there may be a difference in the intrinsic
191 characteristics of diabetes mellitus in patients who present with diabetic symptoms prior
192 to undergoing surgery for gastric cancer, as opposed to those in whom the onset of
193 gastric malignancy precedes the development of diabetes mellitus. Such considerations
194 were beyond the scope of analysis within the parameters of the current study.

195 Similarly, laparoscopic jejunal interposition (LJIP) reconstruction, a surgical
196 technique used to treat gastric cancer in which a pouch is created in the jejunum and
197 used to reconstruct the upper gastrointestinal tract, may be appropriate for patients with
198 impaired glucose tolerance [36]. Studies have shown that LJIP reconstruction leads to

199 better postoperative outcomes, including improved quality of life and nutritional status,
200 compared with other reconstruction methods, such as double tract reconstruction
201 [36-39]. The procedure has also been successfully performed laparoscopically with
202 promising results in terms of operative time, blood loss and postoperative recovery [40,
203 41].

204 In this study, LJIP reconstruction was not performed at the institution, and it
205 was not possible to study the gut microbiota. With access to a suitable dataset, we would
206 like to investigate the association between gut microbiota and the development of
207 new-onset diabetes after surgery further based on different reconstructive methods,
208 including LJIP reconstruction.

209

210 **Acknowledgements**

211 Tatsuyoshi Ikenoue at Shiga University, Data Science and AI Innovation Research
212 Promotion Center for proof reading, Yoshika Onishi at Wellbeing Keiei LLC for proof
213 reading

214

215 **Funding**

216 No funding

217 **Data availability statement**

218 Data is available upon request to the corresponding author. Codes have been uploaded

219 here https://github.com/bougtoir/gastric_dm

220

221 **Conflict of Interests**

222 The authors declare no conflict of interest.

223

224 **Author contributions**

225 O.T.: conceptualization, writing - original draft, data curation, visualization, and final

226 approval of the manuscript.

227

228 **References**

229 1. Gumbs AA, Gagner M, Dakin G, Pomp A. Sleeve gastrectomy for morbid obesity.

230 *Obes Surg.* 2007;17(7):962–9. doi:10.1007/s11695-007-9151-x

231 2. Huang R, Ding X, Fu H, Cai Q. Potential mechanisms of sleeve gastrectomy for

232 reducing weight and improving metabolism in patients with obesity. *Surg Obes*

233 *Relat Dis.* 2019;15(10):1861-71. doi:10.1016/j.soard.2019.06.022

- 234 3. Butte JM, Devaud N, Jarufe NP, Boza C, Pérez G, Torres J, Pérez-Ayuso RM,
235 Arrese M, Martínez J. Sleeve gastrectomy as treatment for severe obesity after
236 orthotopic liver transplantation. *Obes Surg.* 2007;17(11):1517-9.
237 doi:10.1007/s11695-008-9432-z.
- 238 4. Rawlins L, Rawlins MP, Brown CC, Schumacher DL. Sleeve gastrectomy: 5-year
239 outcomes of a single institution. *Surg Obes Relat Dis.* 2013;9(1):21-5.
240 doi:10.1016/j.soard.2012.08.014
- 241 5. Armstrong J, O'Malley SP. Outcomes of sleeve gastrectomy for morbid obesity: a
242 safe and effective procedure?. *Int J Surg.* 2010;8(1):69-71.
243 doi:10.1016/j.ijso.2009.11.004
- 244 6. Madsbad S, Dirksen C, Holst JJ. Mechanisms of changes in glucose metabolism and
245 bodyweight after bariatric surgery. *Lancet Diabetes Endocrinol.* 2014;2(2):152-64.
246 doi:10.1016/S2213-8587(13)70218-3.
- 247 7. Papamargaritis D, et al. Mechanisms of weight loss after sleeve gastrectomy and
248 adjustable gastric banding: Malabsorption versus restriction. *Surg Obes Relat Dis.*
249 2012. doi:10.1016/j.soard.2011.09.033
- 250 8. Natoudi M, et al. Laparoscopic sleeve gastrectomy for morbid obesity: 5-year
251 results. *Surg Obes Relat Dis.* 2013. doi:10.1016/j.soard.2012.09.006

- 252 9. Abu-Gazala S, Horwitz E, Ben-Haroush Schyr R, Bardugo A, Israeli H, Hija A,
253 Schug J, Shin S, Dor Y, Kaestner KH, Ben-Zvi D. Sleeve Gastrectomy Improves
254 Glycemia Independent of Weight Loss by Restoring Hepatic Insulin Sensitivity.
255 Diabetes. 2018;67(6):1079-85. doi:10.2337/db17-1028
- 256 10. Kang KC, et al. Influence of gastric bypass surgery on resting energy expenditure in
257 morbidly obese patients. Surg Obes Relat Dis. 2012.
258 doi:10.1016/j.soard.2011.06.019
- 259 11. Rahakrishnan L, Haridas TV. The effect on glycemic status in type 2 diabetes
260 mellitus after gastric cancer surgery. Int Surg J. 2021.
261 doi:10.18203/2349-2902.isj20205880
- 262 12. An JY, Kim YM, Yun MA, Jeon BH, Noh SH. Improvement of type 2 diabetes
263 mellitus after gastric cancer surgery: short-term outcome analysis after gastrectomy.
264 World J Gastroenterol. 2013;19(48):9410–7. doi:10.3748/wjg.v19.i48.9410
- 265 13. Lee YK, Lee EK, Lee YJ, et al. Metabolic Effects of Gastrectomy and Duodenal
266 Bypass in Early Gastric Cancer Patients with T2DM: A Prospective Single-Center
267 Cohort Study. J Clin Med. 2021;10(17):4008. doi:10.3390/jcm10174008
- 268 14. Guner A, Cho M, Son T, Kim HI, Noh SH, Hyung WJ. Improved glycemic control
269 with proximal intestinal bypass and weight loss following gastrectomy in non-obese

- 270 diabetic gastric cancer patients. *Oncotarget*. 2017;8(61):104605-14.
- 271 doi:10.18632/oncotarget.22262
- 272 15. Wei FX, Zhang HH, Wang HL, et al. Impact of sub-gastrectomy on glucose
273 regulation in gastric cancer patients with T2DM: a follow-up study. *Int J Diabetes*
274 *Dev Ctries*. 2016;36(1):89-94. doi:10.1007/s13410-015-0437-6
- 275 16. Cheng YX, Peng D, Tao W, Zhang W. Effect of oncometabolic surgery on gastric
276 cancer: The remission of hypertension, type 2 diabetes mellitus, and beyond. *World*
277 *J Gastrointest Oncol*. 2021;13(9):1157–63. doi:10.4251/wjgo.v13.i9.1157
- 278 17. Ho TW, Wu JM, Yang CY, Lai HS, Lai F, Tien YW. Total gastrectomy improves
279 glucose metabolism on gastric cancer patients: a nationwide population-based study.
280 *Surg Obes Relat Dis*. 2015;12(3):635-41. doi:10.1016/j.soard.2015.11.024
- 281 18. Jin HY, Park TS, Lee KA, Baek YH. The influence of total or sub-total gastrectomy
282 on glucose control in diabetic and non-diabetic patients. *Acta Endocrinol*.
283 2016;12(4):423–30. doi:10.4183/aeb.2016.423
- 284 19. Özdaş S, Olt S, Şirik M. The role of sleeve gastrectomy on preventing type 2
285 diabetes mellitus. *Open Access Maced J Med Sci*. 2017;5(3):316–8.
286 doi:10.3889/oamjms.2017.074

- 287 20. Tran TB, Worhunsky DJ, Squires MH, et al. To Roux or not to Roux: a comparison
288 between Roux-en-Y and Billroth II reconstruction following partial gastrectomy for
289 gastric cancer. *Gastric Cancer*. 2016;19(3):994-1001.
290 doi:10.1007/s10120-015-0547-3
- 291 21. Hoya Y, Mitsumori N, Yanaga K. The advantages and disadvantages of a Roux-en-Y
292 reconstruction after a distal gastrectomy for gastric cancer. *Surg Today*.
293 2009;39(8):647–51. doi:10.1007/s00595-009-3964-2
- 294 22. Bozzetti F, Bonfanti G, Castellani R, et al. Comparing reconstruction with
295 Roux-en-Y to a pouch following total gastrectomy. *J Am Coll Surg*.
296 1996;183(3):243-8.
- 297 23. He L, Zhao Y. Is Roux-en-Y or Billroth-II reconstruction the preferred choice for
298 gastric cancer patients undergoing distal gastrectomy when Billroth I reconstruction
299 is not applicable? A meta-analysis. *Medicine*. 2019;98(48):e17093.
300 doi:10.1097/MD.00000000000017093
- 301 24. Park JY, Kim YJ. Uncut Roux-en-Y Reconstruction after Laparoscopic Distal
302 Gastrectomy Can Be a Favorable Method in Terms of Gastritis, Bile Reflux, and
303 Gastric Residue. *J Gastric Cancer*. 2014;14(4):229–37.
304 doi:10.5230/jgc.2014.14.4.229

- 305 25. Kim JH, Huh YJ, Park S, et al. Multicenter results of long-limb bypass
306 reconstruction after gastrectomy in patients with gastric cancer and type II diabetes.
307 Asian J Surg. 2020;43(1):297-303. doi:10.1016/j.asjsur.2019.03.018
- 308 26. Wei ZW, Li JL, Wu Y, et al. Impact of pre-existing type-2 diabetes on patient
309 outcomes after radical resection for gastric cancer: a retrospective cohort study. Dig
310 Dis Sci. 2014;59(5):1017-24. doi:10.1007/s10620-013-2965-6
- 311 27. Yun L, Zhiwei J, Junsheng P, Xiaobin W, Cancan X, Jieshou L. Comparison of
312 Functional Outcomes between Functional Jejunal Interposition and Conventional
313 Roux-en-Y Esophagojejunostomy after Total Gastrectomy for Gastric Cancer. Dig
314 Surg. 2020;37(3):240-8. doi:10.1159/000501677
- 315 28. Kwon Y, Jung Kim H, Lo Menzo E, Park S, Szomstein S, Rosenthal RJ. A
316 systematic review and meta-analysis of the effect of Billroth reconstruction on type
317 2 diabetes: A new perspective on old surgical methods. Surg Obes Relat Dis.
318 2015;11(6):1386-95. doi:10.1016/j.soard.2015.01.001
- 319 29. An JY, Kim YM, Yun MA, Jeon BH, Noh SH. Improvement of type 2 diabetes
320 mellitus after gastric cancer surgery: short-term outcome analysis after gastrectomy.
321 World J Gastroenterol. 2013;19(48):9410-7. doi:10.3748/wjg.v19.i48.9410

- 322 30. Costa M, Trovão Lima A, Morais T, et al. Does Reconstruction Type After Gastric
323 Resection Matters for Type 2 Diabetes Improvement?. *J Gastrointest Surg.*
324 2020;24(6):1269-77. doi:10.1007/s11605-019-04255-4
- 325 31. Maksimaityte V, et al. Gastrectomy impact on the course of diabetes mellitus and
326 gut hormones. *Surg Obes Relat Dis.* 2021. doi:10.1016/j.soard.2020.08.031
- 327 32. Tseng CH, Lin JT, Ho HJ, et al. Gastric microbiota and predicted gene functions are
328 altered after subtotal gastrectomy in patients with gastric cancer. *Sci Rep.*
329 2016;6:20701. doi:10.1038/srep20701
- 330 33. Qi YF, Sun JN, Ren LF, et al. Intestinal Microbiota Is Altered in Patients with
331 Gastric Cancer from Shanxi Province, China. *Dig Dis Sci.* 2019;64(5):1193-203.
332 doi:10.1007/s10620-018-5411-y
- 333 34. Lederer AK, Pisarski P, Kousoulas L, Fichtner-Feigl S, Hess C, Huber R.
334 Postoperative changes of the microbiome: are surgical complications related to the
335 gut flora? A systematic review. *BMC Surg.* 2017;17(1):125.
336 doi:10.1186/s12893-017-0325-8
- 337 35. Guyton K, Alverdy JC. The gut microbiota and gastrointestinal surgery. *Nat Rev*
338 *Gastroenterol Hepatol.* 2017;14(1):43–54. doi:10.1038/nrgastro.2016.139

- 339 36. Nomura E, Lee SW, Kawai M, et al. Functional outcomes by reconstruction
340 technique following laparoscopic proximal gastrectomy for gastric cancer: double
341 tract versus jejunal interposition. *World J Surg Oncol*. 2014;12:20.
342 doi:10.1186/1477-7819-12-20
- 343 37. Nomura E, Kayano H, Lee SW, et al. Functional evaluations comparing the
344 double-tract method and the jejunal interposition method following laparoscopic
345 proximal gastrectomy for gastric cancer: an investigation including laparoscopic
346 total gastrectomy. *Surg Today*. 2019;49(1):38-48. doi:10.1007/s00595-018-1699-7
- 347 38. Namikawa T, Munekage E, Munekage M, et al. Reconstruction with Jejunal Pouch
348 after Gastrectomy for Gastric Cancer. *Am Surg*. 2016;82(6):510-7.
- 349 39. Namikawa T, Oki T, Kitagawa H, Okabayashi T, Kobayashi M, Hanazaki K. Impact
350 of jejunal pouch interposition reconstruction after proximal gastrectomy for early
351 gastric cancer on quality of life: short- and long-term consequences. *Am J Surg*.
352 2012;204(2):203-9. doi:10.1016/j.amjsurg.2011.09.035
- 353 40. Mochiki E, Kamimura H, Haga N, Asao T, Kuwano H. The technique of
354 laparoscopically assisted total gastrectomy with jejunal interposition for early
355 gastric cancer. *Surg Endosc*. 2002;16(3):540-4. doi:10.1007/s00464-001-8219-2

356 41. Takaori K, Nomura E, Mabuchi H, et al. A secure technique of intracorporeal
357 Roux-Y reconstruction after laparoscopic distal gastrectomy. Am J Surg.
358 2005;189(2):178-83. doi:10.1016/j.amjsurg.2004.09.008

359

360 **Figure Legends**

361 Figure 1: Kaplan-Mayer curve of new onset of DM in RY and OT group
362 RY, Roux-en-Y; OT, other surgical techniques.

363

364 **Tables**

365 **Table 1.** Demographics of the study population

	RY	OT	P-value
Number of cases	489	226	
Age (SD)	68.1 (10.6)	70.0 (10.4)	0.031
Male	363 (74.2%)	139 (61.5%)	
Height in cm (SD)	160.6 (8.6)	157.9 (10.8)	0.001
Weight in kg (SD)	57.1 (11.1)	56.9 (14.8)	0.865
BMI in kg/m ² (SD)	22.1 (3.4)	24.6 (3.2)	0.246
ASA score	1 27 (5.5%)	21 (9.3%)	

2	384 (78.5%)	167 (73.9%)
3	77 (15.7%)	34 (15.0%)
4	1 (0.2%)	4 (1.8%)

366 SD, standard deviation; BMI, body mass index; ASA, American Society of

367 Anesthesiology; RY, Roux-en-Y; OT, other surgical techniques.

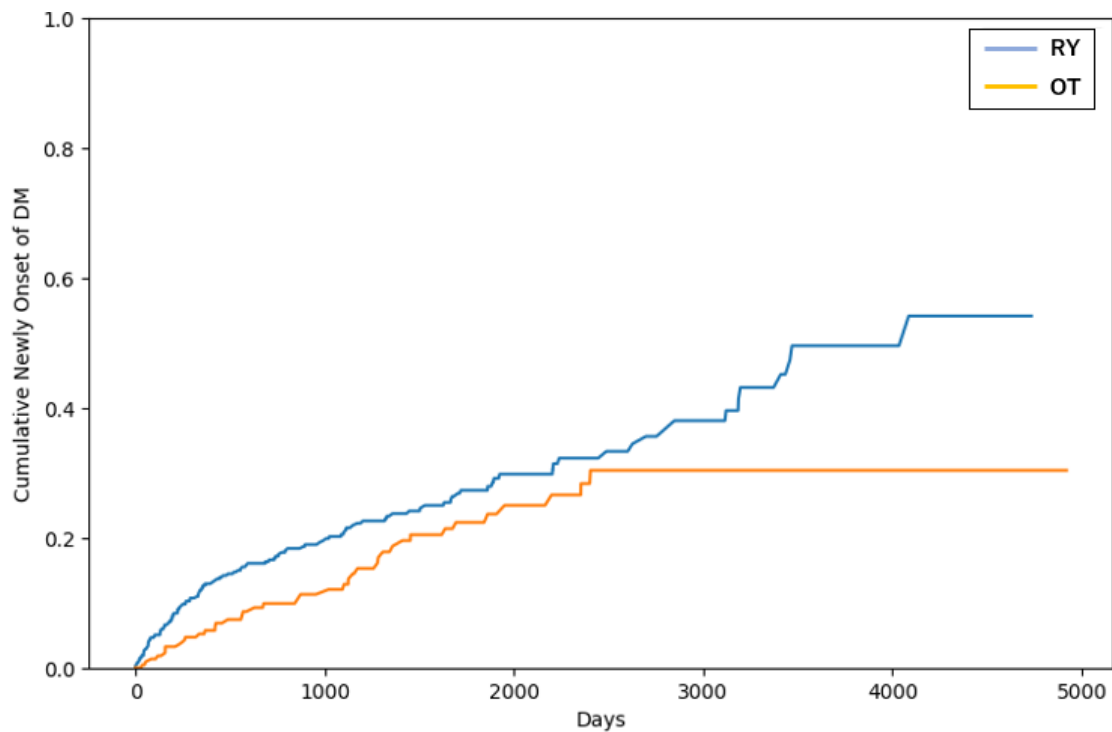


Figure 1: Kaplan-Mayer curve of newly onset of DM in RY and OT group
RY, Roux-en-Y; OT, other surgical techniques.