

1 **Title:** Cutaneous *Leishmania mexicana* Infections in the United States: Defining Strains
2 Through Endemic Human Pediatric Cases in Northern Texas

3

4 **Authors:** Binita Nepal, Ph.D.^{1,2}; Clare McCormick-Baw, M.D., Ph.D.³; Karisma Patel,
5 Pharm. D.¹; Sarah Firmani, Pharm. D.¹; Dawn M. Wetzel, M.D., Ph.D.^{1,2,*}

6

7 **Affiliations:** Departments of ¹Pediatrics, ²Biochemistry, and ³Pathology, University of
8 Texas Southwestern Medical Center

9

10 ***Corresponding author:** Dawn M. Wetzel, M.D., Ph.D., Department of Pediatrics and
11 Biochemistry, University of Texas Southwestern Medical Center, 5323 Harry Hines
12 Blvd, Dallas, TX 75390; phone 214-645-9510; fax 214-648-2961; email:

13 dawn.wetzel@utsouthwestern.edu

14

15 **Running title:** Endemic leishmaniasis in the United States

16

17 **Keywords:** cutaneous, *Leishmania mexicana*, leishmaniasis, pediatrics, parasitology,
18 Texas

19

20 **Abbreviations:** 6 phosphogluconate dehydrogenase (6PGD), Centers for Disease
21 Control and Prevention (CDC), Infectious Diseases (ID), Infectious Disease Society of
22 America (IDSA), malate dehydrogenase (MDH), mannose phosphate isomerase (MPI),
23 multi-locus sequence analysis (MLSA), polymerase chain reaction (PCR), University of
24 Texas Southwestern Medical Center (UTSW), United States (US)

25

26 **Word counts:** Manuscript 1940/2000; Abstract 248/250; Importance 144/150

27 **ABSTRACT**

28 Over a six-month span, three patients under five years old with cutaneous leishmaniasis
29 presented to the Pediatric Infectious Diseases Clinic at the University of Texas
30 Southwestern Medical Center/Children's Health Dallas. None had traveled outside of
31 the United States (US); all had confirmed *L. mexicana* infections by PCR. We provide
32 case descriptions and images to increase the awareness of this disease among US
33 physicians and scientists. Two patients responded to fluconazole, but one required
34 topical paromomycin. Combining these cases with guidelines and our literature review,
35 we suggest that: 1) higher doses (ten-twelve mg/kg/day) of fluconazole should be
36 considered in young children to maximize likelihood and rapidity of response and 2)
37 patients should transition to alternate agents if they do not respond to high-dose
38 fluconazole within six weeks. Furthermore, and of particular interest to the broad
39 microbiology community, we used samples from these cases as a proof-of-concept to
40 propose a mechanism to strain-type US-endemic *L. mexicana*. For our analysis, we
41 sequenced three housekeeping genes and the internal transcribed sequence 2 of the
42 ribosomal RNA gene. We identified genetic changes that not only allow us to distinguish
43 US-based *L. mexicana* strains from strains found in other areas of the Americas, but
44 also establish polymorphisms that differ between US isolates. These techniques will
45 allow documentation of genetic changes in this parasite as its range expands. Hence,
46 our cases of cutaneous leishmaniasis provide significant evolutionary, treatment and
47 public health implications as climate change increases exposure to formerly tropical
48 diseases in previously non-endemic areas.

49

50 **IMPORTANCE**

51 Leishmaniasis is a parasitic disease that typically affects tropical regions worldwide.
52 However, the vector that carries *Leishmania* is spreading northward into the United
53 States (US). Within a six-month period, three young cutaneous leishmaniasis patients
54 were seen at the Pediatric Infectious Diseases Clinic at The University of Texas
55 Southwestern/Children's Health Dallas. None had traveled outside of north Texas. We
56 document their presentations, treatments, and outcomes and compare their
57 management to clinical practice guidelines for leishmaniasis. We also analyzed the
58 sequences of three critical genes in *Leishmania mexicana* isolated from these patients.
59 We found changes that not only distinguish US-based strains from strains found
60 elsewhere, but also differ between US isolates. Monitoring these sequences will allow
61 tracking of genetic changes in parasites over time. Our findings have significant US
62 public health implications as people are increasingly likely to be exposed to what were
63 once tropical diseases.

64

65 INTRODUCTION

66 Leishmaniasis is caused by obligate intracellular parasites of the genus
67 *Leishmania*, which are spread by *Lutzomyia* and *Phlebotomus* sand flies. A spectrum of
68 human illness results, including cutaneous, mucocutaneous, and visceral disease.
69 Disease manifestations are governed by the infecting parasite species and host immune
70 status (1).

71
72 Generations of medical providers and infectious diseases specialists have been
73 taught that leishmaniasis occurs in tropical and subtropical regions, and not the United
74 States (US). Such viewpoints are reflected in published distributions of leishmaniasis
75 (2). However, over time, the sand fly vector's distribution has expanded into previously
76 non-endemic areas (3), and leishmaniasis is well-documented in US animals (4). In
77 addition, multiple articles have described human acquisition of cutaneous leishmaniasis
78 within Oklahoma and Texas, where leishmaniasis is now a reportable disease (5). In
79 fact, a cross-sectional observational study indicated that 41/69 cases (59%) of
80 cutaneous leishmaniasis diagnosed from 2007-2017 in Texas were acquired locally
81 rather than from travel (6). Nevertheless, it is common for US providers to contemplate
82 a leishmaniasis diagnosis in only patients with a history of foreign birth, travel, or military
83 service, which in turn often excludes pediatric patients from consideration.

84
85 Within a 6-month period, 3 patients with cutaneous leishmaniasis presented to
86 the Pediatric Infectious Diseases (ID) Clinic at the University of Texas Southwestern
87 Medical Center (UTSW)/Children's Health Dallas. These cases reflect this disease's

88 changing epidemiology, since clinical isolates from these patients had genetic
89 polymorphisms that have been documented in Texan strains of *L. mexicana*.
90 Furthermore, we sequenced three *Leishmania* housekeeping genes and identified
91 significant differences between our clinical isolates, providing us with a novel
92 mechanism to type *L. mexicana* strains. Monitoring these sequences could permit
93 documentation of genetic variation among *Leishmania* isolates as this parasite expands
94 its geographic range in the US.
95

96 RESULTS

97 Patient presentations

98 3 cases of cutaneous leishmaniasis acquired in Texas were referred to the
99 Pediatric ID Clinic at UTSW/Children's Health Dallas over a six month period by their
100 treating dermatologists. Interestingly, none of these patients' family members had
101 lesions. Descriptions of these cases follow (**Figure 1**).

103 Case 1:

104 A 0-5 year old girl reported a non-healing nodular lesion on her right jawline that
105 had been present for months. She had not traveled outside north Texas. The lesion had
106 not responded to antibiotic therapy and worsened with steroids. A biopsy showed a
107 granulomatous infiltrate within the dermis, with amastigotes observed inside histiocytes,
108 diagnostic of cutaneous leishmaniasis. Genetic analysis performed at the Centers for
109 Disease Control and Prevention (CDC) demonstrated *L. mexicana* infection. She was
110 started on 6 mg/kg/day of fluconazole and, with 6 weeks of treatment, the lesion
111 essentially resolved.

113 Case 2:

114 A few months later, a 0-5 year-old boy who had no travel history developed a
115 non-healing nodular lesion on his left arm. It did not respond to antibiotics and ulcerated
116 after steroids were administered. He was seen in the ID clinic and had a nearly 2.5 cm-
117 diameter ulcer (**Fig 1A**). Biopsy demonstrated granulomatous inflammation with
118 innumerable amastigotes within histiocytes (**Fig 1B-D**). PCR amplification of parasite

119 DNA performed through the CDC detected *L. mexicana*. He received 6 mg/kg/day of
120 fluconazole and required 10 weeks of therapy for lesion resolution.

121

122 **Case 3:**

123 A 0-5 year old boy developed a nodular facial lesion that did not improve with
124 antibiotics and worsened with steroids. He had never traveled outside north
125 Texas/southern Oklahoma; however, he had been taken for daily walks at sunset at a
126 lake near his home. A biopsy and genetic sequencing performed at the CDC
127 demonstrated *L. mexicana* infection, leading to ID referral approximately 1 month after
128 patient 2. He was treated with fluconazole at 6 mg/kg/day, which was increased to 12
129 mg/kg/day after minimal clinical response. When his lesion failed to improve on
130 fluconazole, he was given topical paromomycin, compounded as in **Figure 1E** (7). After
131 several months, his lesion resolved.

132

133 **Genetic sequencing of patient isolates**

134 Since there appeared to be an elevated incidence of local *Leishmania* infections,
135 we explored whether there was genetic variability in parasites from clinical samples.
136 With permission from patients 2 and 3, we obtained DNA from lesions for molecular
137 testing (termed Tx2 and Tx3, **Figure 2** and **Supplemental Material**). Unfortunately, a
138 sample from the initial patient (patient 1) was not available for further study. We then
139 proceeded with molecular testing as follows.

140

141 **ITS2 sequencing:**

142 The CDC sequences the ribosomal RNA-internal transcribed spacer 2 (ITS2)
143 region to identify the infecting *Leishmania* species, since having this information is
144 needed for appropriate therapeutic decisions (7). Texas-specific ITS2 polymorphisms in
145 *L. mexicana* have been described, specifically A → C647 and T → C649 (8). Our
146 sequence analysis confirmed that these ITS2 polymorphisms were seen in both of our
147 isolates (**Supplemental Figure and Table**).

148

149 ***Multilocus Sequence Analysis (MLSA):***

150 We next explored whether there was intraspecies variation among isolates using
151 multilocus sequence analysis (MLSA). We selected a panel of 3 housekeeping genes:
152 mannose phosphate isomerase (MPI), malate dehydrogenase (MDH) and 6
153 phosphogluconate dehydrogenase (6PGD). We used gene-specific primers for
154 amplification and Sanger sequencing to identify synonymous/nonsynonymous SNPs in
155 coding regions. Of note, our primers did not amplify genetic material from uninfected
156 human samples.

157

158 We found that 6PGD was the most conserved gene, with the least number of
159 SNPs in both isolates. Interestingly, the MDH and MPI genes of Tx2 had significantly
160 diverged from reference strains. In fact, the MDH enzyme in Tx2 was prematurely
161 truncated (by 9 aa at the C terminus) due to transversion 922 (A→T) (**Figure 2,**
162 **Supplemental Table**). Tx3 also had several SNPs in the MDH and MPI genes that did
163 not match reference strains (**Figure 2, Supplemental Table**). Hence, MLSA analysis of

164 these three metabolic genes may provide a unique molecular epidemiological

165 mechanism to study genetic divergence in *L. mexicana*.

166

167 **DISCUSSION**

168 Here, we have documented 3 cases of cutaneous leishmaniasis due to *L.*
169 *mexicana* acquired by pediatric patients within northern Texas. Since our described
170 patients had normal immune systems and did not have infected family members, we
171 believe they were individually exposed to sandflies outside their homes. Despite their
172 relatively small number, our cases have significant bearing on US public health
173 initiatives, as the likelihood of US patient exposure to what were formerly
174 geographically-constrained tropical diseases will likely continue to increase as shifting
175 vector distribution and other drivers continue (3). In addition, we have provided a simple
176 means to type strains of *L. mexicana* endemic to the United States. We propose that
177 our methodology can be used to monitor genetic changes in *Leishmania* as the range of
178 this parasite expands.

179

180 Our cases provide multiple therapeutic imputations for treating physicians in the
181 US. Per Infectious Disease Society of America (IDSA) guidelines, treating single lesions
182 from non-disseminating cutaneous species is optional, even in pediatric patients (7).
183 However, we treated our patients for cosmetic reasons, since each had facial or large
184 lesions. The referring dermatologists were hesitant to utilize local cryotherapy or
185 brachytherapy (standard for single *L. mexicana*-induced lesions) due to patient age.
186 IDSA guidelines indicate that employing fluconazole is reasonable for US pediatric
187 cutaneous leishmaniasis patients (7). Therefore, our patients were initially treated with
188 oral fluconazole, which has a ~50% success rate among all species (9, 10); 2 of our
189 patients responded. Fluconazole is generally well-tolerated, has good oral
190 bioavailability, and achieves epidermis/dermis concentrations above plasma levels (11,

191 12). A dose of 6 mg/kg typically is recommended for pediatric cutaneous leishmaniasis
192 (7). However, for serious fungal infections, many authors propose higher doses (12
193 mg/kg) in children based on fluconazole's lower half-life, higher volume of distribution,
194 more rapid clearance, and minimal side effect profile in pediatric patients, to prevent
195 treatment failure or relapse (13), (14). Combining this literature with our experience,
196 initiating higher doses (10-12 mg/kg/day (15)) in younger (\leq 5-year-old) pediatric
197 leishmaniasis patients may be worthwhile to maximize likelihood and rapidity of
198 response. Furthermore, we note our third patient did not respond to months of
199 fluconazole therapy. Consistent with IDSA guidelines, we propose that pediatric
200 leishmaniasis patients be transitioned to alternate agents if they do not begin to respond
201 to high-dose fluconazole in 4-6 weeks (7). Notably, the topical paromomycin employed
202 in patient 3 can be difficult to acquire in the US, as it requires compounding by a willing
203 pharmacy and investigational drug applications, so we did not use it initially in our
204 patients.

205
206 We also determined that our patients' *Leishmania* isolates have undergone
207 significant genetic changes that may offer insights into evolutionary biology. Notably, it
208 is now more common for patients in Texas to acquire leishmaniasis locally than from
209 travel (5, 6). The CDC has described a specific polymorphism in the ITS2 sequence of
210 *L. mexicana* in Texas-endemic strains; we replicated these results in our patients'
211 isolates. Furthermore, we provide a mechanism for strain-typing isolates of this newly-
212 endemic parasite using 3 metabolic genes. Our results demonstrate the power of MLSA
213 analysis as a simple yet important molecular epidemiological tool to study *Leishmania*

214 genetic divergence within the US. Since clusters of leishmaniasis cases have been
215 described, our technique could potentially be used to characterize outbreaks. The large
216 number of genetic changes that we found using a limited number of isolates suggests
217 that Texas-specific strains of *L. mexicana* may be under significant evolutionary
218 selection pressure, which in turn may lead to novel mutations. We plan to continue to
219 monitor available isolates for this possibility over time.

220

221 Although cases of leishmaniasis certainly have been described in the United
222 States, our case discussions have typically been met with surprise from clinicians and
223 scientists alike. One factor that may lead to this underappreciation of endemicity is that
224 leishmaniasis is a reportable disease in Texas, but not in other states (6). We would
225 argue that leishmaniasis should be a reportable disease nationwide so that its incidence
226 and distribution can be monitored by public health officials. Furthermore, we propose
227 that such information could be collected in conjunction with our strain-typing techniques
228 to characterize ongoing genetic variation in this parasite as its endemic area expands.
229 Hence, the cases of cutaneous leishmaniasis described here have significant
230 microbiological, treatment and public health implications.

231

232 **METHODS**

233 ***Molecular analysis/Strain typing:***

234 For patient 2 in this report, a clinical sample (termed Tx2) was obtained and briefly
235 cultured at UTSW as promastigotes in Schneider's Insect cell media (Sigma, S9895)
236 supplemented with 20% FBS (GeminiBio, 100-106) and 1% penicillin-streptomycin
237 (Sigma, P4333). Time in culture was limited to minimize genetic changes *in vitro*. DNA
238 was extracted using the DNAeasy Blood and tissue Kit (Qiagen, 69504) according to
239 manufacturer's instructions. For patient 3 (Tx3), we received extracted DNA from the
240 CDC (Thanks to Yvonne Qvarnstrom, CDC), which had been generated in a similar
241 manner to Tx2. Extracted DNA was used to amplify the rRNA-internal transcribed
242 spacer (ITS2) region for species identification (**Supplemental Figure**) and three
243 housekeeping genes: mannose phosphate isomerase (MPI), malate dehydrogenase
244 (MDH) and 6 phosphogluconate dehydrogenase (6PGD) with gene specific primers for
245 *L. mexicana*. Sequences for all primers are in the **Supplemental Table**. The CDS
246 region for these genes was then used for MLSA to explore genetic variation among
247 isolates. Briefly, each gene was amplified with high fidelity DNA polymerase Primestart
248 Max (Takara Bio, RO45A) using forward and reverse primers binding in upstream and
249 downstream coding regions, respectively. PCR amplified fragments were Sanger
250 sequenced in the UTSW McDermott Center Sequencing Core facility using Life
251 Technologies® Dye Terminator 3.1 chemistry and 3730XL Genetic Analyzers.

252

253 ***Single nucleotide polymorphism (SNP) analysis:***

254 Each gene was sequenced bidirectionally using 2 sets of forward (ExtF, IntF) and
255 reverse (ExtR and IntR) primers. ExtF and ExtR bind outside of the coding region and
256 IntF and IntR bind in the coding region. Due to the sequence variability found in the Tx2
257 MPI gene, multiple internal primers were used. SNP analysis was performed using the
258 sequence alignment tools EMBOSS needle and Clustal Omega (www.ebi.ac.uk).

259

260

261 **REFERENCES**

- 262 1. Wetzel DM, Phillips MA. Chapter 67: Chemotherapy of protozoal infections:
263 amebiasis, giardiasis, trichomoniasis, trypanosomiasis, leishmaniasis, and other
264 protozoal infections. In: Brunton L, editor. Goodman and Gilman's The Pharmacological
265 Basis of Therapeutics. 13 ed. New York, NY: McGraw-Hill Medical; 2023. p. 1309-24.
- 266 2. <https://www.cdc.gov/dpdx/leishmaniasis/index.html>.
- 267 3. Gonzalez C, Wang O, Strutz SE, Gonzalez-Salazar C, Sanchez-Cordero V,
268 Sarkar S. Climate change and risk of leishmaniasis in North America: predictions from
269 ecological niche models of vector and reservoir species. PLoS Negl Trop Dis. 2010 Jan
270 19;4(1):e585.
- 271 4. Petersen CA. Leishmaniasis, an emerging disease found in companion animals
272 in the United States. Top Companion Anim Med. 2009 Nov;24(4):182-8.
- 273 5. Wright NA, Davis LE, Aftergut KS, Parrish CA, Cockerell CJ. Cutaneous
274 leishmaniasis in Texas: A northern spread of endemic areas. J Am Acad Dermatol.
275 2008 Apr;58(4):650-2.
- 276 6. McIlwee BE, Weis SE, Hosler GA. Incidence of endemic human cutaneous
277 leishmaniasis in the United States. JAMA Dermatol. 2018 Sep 1;154(9):1032-9.
- 278 7. Aronson N, Herwaldt BL, Libman M, Pearson R, Lopez-Velez R, Weina P, et al.
279 Diagnosis and treatment of leishmaniasis: clinical practice guidelines by the Infectious
280 Diseases Society of America (IDSA) and the American Society of Tropical Medicine and
281 Hygiene (ASTMH). Am J Trop Med Hyg. 2016 Dec 07.
- 282 8. de Almeida ME, Steurer FJ, Koru O, Herwaldt BL, Pieniazek NJ, da Silva AJ.
283 Identification of Leishmania spp. by molecular amplification and DNA sequencing

- 284 analysis of a fragment of rRNA internal transcribed spacer 2. J Clin Microbiol. 2011
285 Sep;49(9):3143-9.
- 286 9. Prates FV, Dourado ME, Silva SC, Schriefer A, Guimaraes LH, Brito MD, et al.
287 Fluconazole in the treatment of cutaneous leishmaniasis caused by *Leishmania*
288 *braziliensis*: a randomized controlled trial. Clin Infect Dis. 2017 Jan 1;64(1):67-71.
- 289 10. Alrajhi AA, Ibrahim EA, De Vol EB, Khairat M, Faris RM, Maguire JH.
290 Fluconazole for the treatment of cutaneous leishmaniasis caused by *Leishmania major*.
291 N Engl J Med. 2002 Mar 21;346(12):891-5.
- 292 11. Faergemann J. Pharmacokinetics of fluconazole in skin and nails. J Am Acad
293 Dermatol. 1999 Jun;40(6 Pt 2):S14-20.
- 294 12. Faergemann J, Laufen H. Levels of fluconazole in serum, stratum corneum,
295 epidermis-dermis (without stratum corneum) and eccrine sweat. Clin Exp Dermatol.
296 1993 Mar;18(2):102-6.
- 297 13. Pacifici GM. Clinical pharmacology of fluconazole in infants and children. Clin
298 Med Investig. 2020;5:10.15761.
- 299 14. Watt K, Benjamin DK, Jr., Cohen-Wolkowicz M. Pharmacokinetics of antifungal
300 agents in children. Early Hum Dev. 2011 Mar;87 Suppl 1(Suppl 1):S61-5.
- 301 15. Wade KC, Benjamin DK, Jr., Kaufman DA, Ward RM, Smith PB, Jayaraman B, et
302 al. Fluconazole dosing for the prevention or treatment of invasive candidiasis in young
303 infants. Pediatr Infect Dis J. 2009 Aug;28(8):717-23.

304

305

306 **ACKNOWLEDGEMENTS**

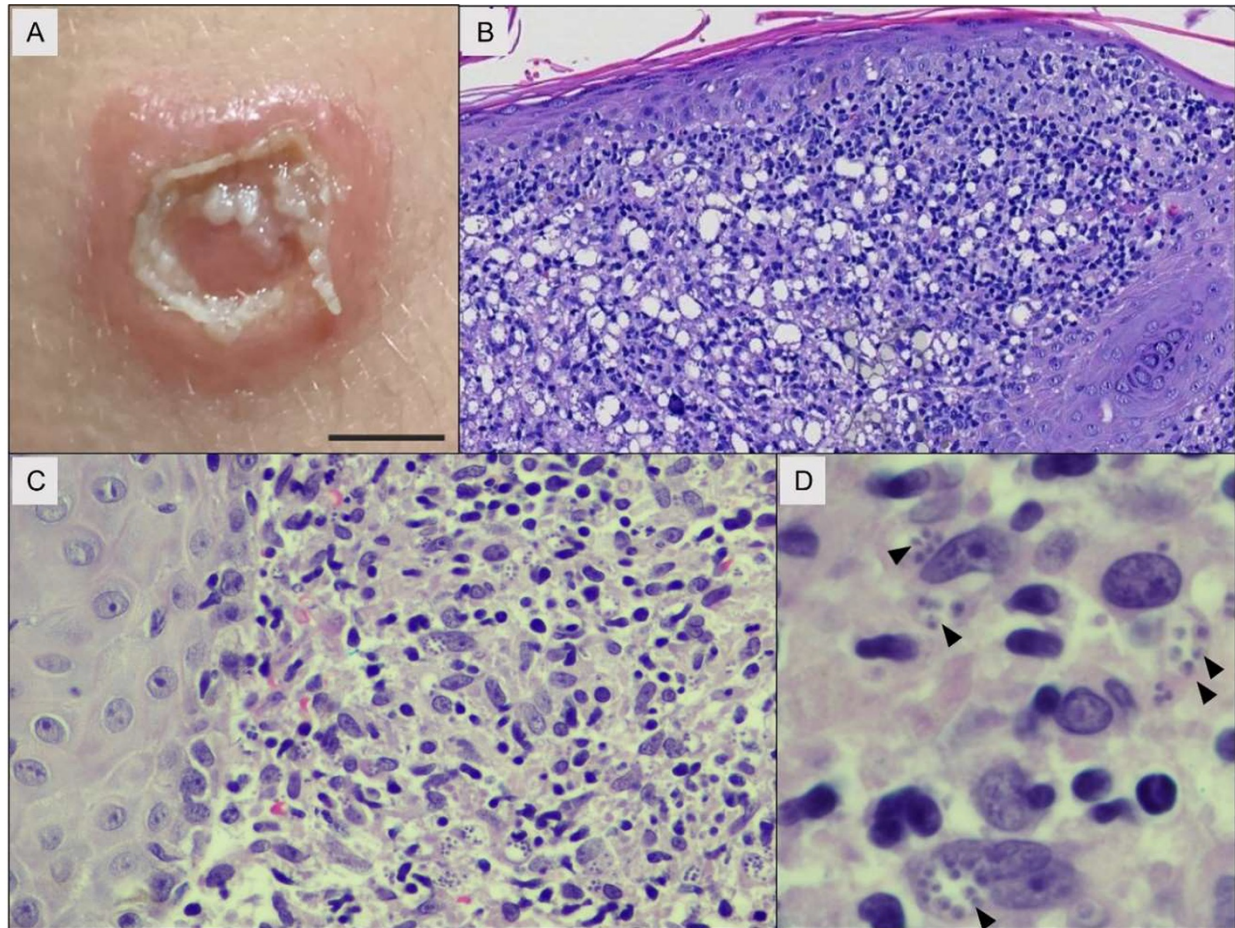
307 We are grateful to staff members in the UTSW/Children’s Health Dallas Pediatric
308 Infectious Diseases clinic for their flexibility in patient scheduling to ensure that these
309 leishmaniasis patients saw Dr. Wetzel. We thank the Texas Department of Health for
310 discussing these cases with us when we reported them, members of the UT
311 Southwestern and global parasitology communities for their support and interest in this
312 experience, and the Pediatric ID Division at UT Southwestern for providing helpful
313 advice. We also thank Dr. Yvonne Qvarnstrom at the CDC for assisting us with
314 acquiring leishmanial DNA from patient 3. Dr. Nepal is funded by American Heart
315 Association Postdoctoral Fellowship 916875. Dr. Wetzel was supported by a Children’s
316 Clinical Research Advisory Committee (CCRAC) Early Investigator Award, a 2019
317 Harrington Scholar-Innovator Award, NIH R01 AI146349, a Welch Grant for Chemistry
318 (I-2086) and funds from the UTSW Department of Pediatrics. The funders did not play a
319 role in the writing of this manuscript. Reporting of this small case series (≤ 3 patients)
320 was exempt from UTSW/Children’s Health Dallas-IRB approval. However, the patients
321 in this study provided permission for images to be used and for clinical samples to be
322 taken; these activities were approved by the IRBs at both UTSW and Children’s Health
323 (STU-2019-0754).

324

325

326 **FIGURES**

327 **Figure 1**



E	Clinical features	Case 1	Case 2	Case 3
	Gender	Female	Male	Male
	Race/ethnicity	Hispanic	Hispanic	Caucasian
	Travel history	None	None	None
	Lesion location	R inferior jaw	L arm	R temple
	Lesion size/diameter	1.5 X 1.5 cm	2.5 X 2.5 cm	1 X 2 cm
	Duration of symptoms before diagnosis	6 months	5 months	4 months
	Infective species	<i>L. mexicana</i>	<i>L. mexicana</i>	<i>L. mexicana</i>
	Initial lab abnormalities*	None performed	Eosinophilia (AEC 740) Elevated IgE (215)	Mild neutropenia (ANC 1300) Eosinophilia (AEC 1300) Mildly low IgG (241)
	Treatment	Fluconazole (6 mg/kg) X 6 wks	Fluconazole (6 mg/kg) X 10 wks	Fluconazole (6 mg/kg X 5 wks; 8 mg/kg X 3 weeks; 12 mg/kg X 6 wks) → Topical paromomycin (15% paromomycin, 12% MBCL in paraffin) X 10 days on, 10 days off X 3 iterations

329 **Figure 1: Clinical features of patients presented. A-D)** Clinical and histopathological
330 evaluation of patient 2. **A)** Approximately 2.5 cm lesion on the left arm clinically
331 consistent with cutaneous leishmaniasis. Scale bar = 1 cm. **B)** Granulomatous
332 inflammation with numerous histiocytes (100x magnification, H&E). Sample shared from
333 Sagis Diagnostics, Houston, TX. **C)** Small, round amastigotes are visible within
334 histiocytes in the reticular dermis (500x magnification, H&E). **D)** Amastigotes within
335 histiocytes with visible kinetoplasts at arrowheads (1000x magnification, oil immersion,
336 H&E). **E)** Patient demographics, signs and symptoms, and laboratory findings. *Normal
337 studies in Case 2 included CBC, remainder of differential, C-reactive protein, and
338 chemistries including liver function panel. Normal studies in Case 3 included CBC,
339 remainder of differential, C-reactive protein, chemistries including liver function panel,
340 IgA, IgM, and IgE. All laboratory abnormalities resolved after treatment. ANC, Absolute
341 neutrophil count. AEC, Absolute eosinophil count.

342

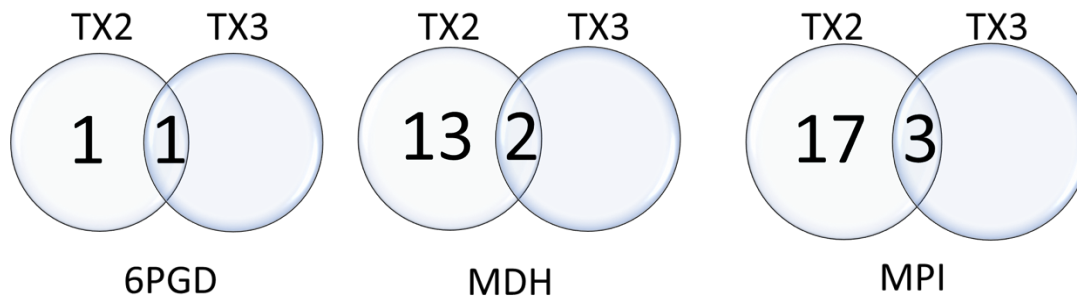
343 **Figure 2**

344 **A**

Substitution	MPI		MDH		PGD	
	Tx2	Tx3	Tx2	Tx3	Tx2	Tx3
Transitions	252 (G→A) 417 (C→T) 501 (A→G) 504 (C→T) 529 (A→G) 592 (A→G) 612 (T→C) 661 (T→C) 693 (A→G) 711 (T→C) 720 (G→A) 1148 (A→G) 1182 (G→A)	592 (A→G) 612 (T→C) 661 (T→C)	185 (T→C) 223 (A→G) 226 (C→T) 300 (T→C) 332 (T→C) 515 (A→G) 523 (A→G) 846 (C→T) 868 (A→G) 869 (T→C)	523 (A→G)	990 (A→G)	990 (A→G)
Transversion	483 (A→T) 493 (A→T) 545 (C→G) 605 (C→A) 663 (C→G) 870 (C→A) 1032 (C→G)		184 (T→A) 292 (A→C) 378 (T→G) 922 (A→T) 946 (T→A)	292 (A→C)	729 (G→T)	

345

346 **B**



347

348 **Figure 2. Genetic analysis of clinical isolates. A)** SNPs reported after MLSA

349 analysis. The nonsynonymous SNPs are in bold. **B)** Venn diagram showing SNPs

350 reported on genes analyzed by MLSA.

351

352 **SUPPLEMENTAL MATERIAL**

353

354 **Supplemental Methods, Results and Discussion:**

355 Additional specific details regarding genetic sequencing of the clinical isolates from
356 these patients are described below. Of interest, this analysis can be done after sampling
357 lesions with a flocked nylon swab, which provides a less invasive means of diagnosis in
358 children. All sequences described in this manuscript have been submitted to TriTryp DB
359 ([TriTrypDB](#)).

360

361 **ITS2:** We performed sequence analysis on the rRNA-internal transcribed spacer 2
362 (ITS2) region, which shows a previously reported Texas-specific polymorphism, C647
363 and C649, on both Tx2 and Tx3. For this analysis, FJ948434 was used as a reference
364 strain. However, alignments of the FJ948434 ITS2 sequence with 25 publicly available
365 non-US *L. mexicana* ITS2 sequences were identical. Isolates' ITS2 sequences are
366 shown in the **Supplemental Figure**, and primer sequences are contained in the
367 **Supplemental Table**.

368

369 **Metabolic enzymes:** For the three metabolic enzymes sequenced, *Leishmania*
370 *mexicana* MHOM/GT/2001/U1103 (Guatemala) was used as a reference strain, since it
371 is the *L. mexicana* strain with the most widely available genomic sequence (1).

372

373 **MDH:** SNP analysis in the CDS of the MDH gene showed a total of 15 SNPs in Tx2. We
374 identified nine base transitions: 185 (T→C), 223 (A→G), 226 (C→T), 300 (T→C), 332
375 (T→C), 515 (A→G), 523 (A→G), 846 (C→T), 868 (A→G), 869 (T→C), and five base

376 transversions, 184 (T→A), 292 (A→C), 378 (T→G), 922 (A→T), 946 (T→A). Tx3 had
377 two SNPs, a base transition at 523 (A→G) and a transversion at 292 (A→C). We note
378 that SNPs 184 (T→A), 185 (T→C), 223 (A→G), 226 (C→T), 515 (A→G), 523 (A→G),
379 868 (A→G), 869 (T→C) were nonsynonymous and resulted in amino acid changes
380 (**Figure 2, Supplemental Table**). Of particular interest, MDH in Tx2 was prematurely
381 truncated (by 9 aa at the C terminus) due to transversion 922 (A→T). However, this
382 truncation would not be expected to affect its enzymatic function (2).

383

384 *PGD*: Similarly, we identified 2 SNPs on coding region of PGD gene of Tx2,
385 transversion at 729 (G→T) and single transition 990 (A→G). Tx3 had a single base
386 transition at 990 (A→G).

387

388 *MPI*: The MPI gene for the Tx3 isolate had 3 base transitions, 592 (A→G), 612 (T→C),
389 661 (T→C). On the other hand, for Tx2, the MPI gene had 20 SNPs: transitions 252
390 (G→A), 417 (C→T), 501 (A→G), 504 (C→T), 529 (A→G), 592 (A→G), 612 (T→C), 661
391 (T→C), 693 (A→G), 711 (T→C), 720 (G→A), 1148 (A→G), 1182 (G→A) and
392 transversions: 483 (A→T), 493 (A→T), 545 (C→G), 605 (C→A), 663 (C→G), 870
393 (C→A), 1032 (C→G). SNPs 529 (A→G), 545 (C→G), 592 (A→G), 605 (C→A), 661
394 (T→C), 663 (C→G), 1148 (A→G) were nonsynonymous.

395

396

397 **Supplemental Figure**

398

399	FJ948434 . 1	ATACACACATGTGCACTCTCCTTTGTGTGGGTGCGCGCGTGAAAAACTCCTCTCTGGTG	660
400	Tx2 . ITS2	ATACACACATGTGCACTCTCCTTTGTGTGGGTGCGCGCGTGAAAAACCCCTCTCTGGTG	224
401	Tx3 . IT2	ATACACACATGTGCACTCTCCTTTGTGTGGGTGCGCGVGTGAAAAACCCCTCTCTGGTG	224
402		***** * *****	

403

404 **Supplemental Figure.** Sequences of the relevant ITS2 region in a representative non-

405 US reference strain (FJ948434.1), compared to Tx2 and Tx3.

406

407

408 **Supplemental Table**
409

Gene	Accession number	Amplicon size (bp)	CDS length (bp)	Location	Primer sequence
ITS2		Variable	N/A	18S ribosome	ITS2.F: GCATGCCATATTCTCAGTGTC ITS2.R: GGCCAACGCGAAGTTGAATTC ITS2.R1: GAATTCTCGTTTTGGTTTTTTG
Glucose-6-phosphate dehydrogenase (<i>g6pdh</i>)	XM_003879281.1	1700	1440	Chr 34	ExtF: TTA CTGGCGCTTAGTCCCATCATA ExtR: TAAGAGCGGAATCGGGTGC IntF: GCAGGCAACTATCTGTCAGAGAA IntR: ATGTTGAGCGAGGGCGCTG
Malate dehydrogenase (<i>mdh</i>)	XM_003878549.1	1166	951	Chr 33	ExtF: TGCCGTACAATCCATCTCGC ExtR: AACGACGCCGCATCATTGTG IntF: ATCATCAGCAACCCTGTCAACAGC IntR: TAACGTCGTACGGGCTTGC
Mannose phosphate isomerase (<i>mpi</i>)	XM_003879281	1471	1266	Chr 31	ExtF: TCTGGGTTGTGTAGTAGCGTC ExtR: AATTCGCCTGCCACTGTG IntF: TCCAGAGCTGGCTGAGCTTGTAG IntR: CATAACGGTTCGTCATCATAGTC SeqF1: CTTTGAGGCACTCTGCTGC SeqF2: GACTATGATGACGACCGTGTATG SeqR: GTCGTATCGTTCACCTTGGCAG SeqR1: CGTCAATGTTGAAGGAACTCGGT

410

411 **Supplemental Table. Genes and primer sequences used for MLSA analysis.**

412

413

414 **SUPPLEMENTAL REFERENCES**

- 415 1. Rogers MB, Hilley JD, Dickens NJ, Wilkes J, Bates PA, Depledge DP, et al.
416 Chromosome and gene copy number variation allow major structural change
417 between species and strains of *Leishmania*. *Genome Res.* 2011
418 Dec;21(12):2129-42.
- 419 2. Leroux A, Fleming-Canepa X, Aranda A, Maugeri D, Cazzulo JJ, Sánchez MA,
420 and Nowicki C. Functional characterization and subcellular localization of the
421 three malate dehydrogenase isozymes in *Leishmania* spp. *Mol Biochem*
422 *Parasitol.* 2006: 149(1):74-85.