

1
2
3
4
5
6
7
8
9
10
11
12
13
14
15
16
17
18
19
20

Primary care access and feasibility of Spatial Accessibility Index (SAI) in assessing primary care in rural Sri Lanka

Spatial accessibility to primary care facilities in the Anuradhapura District of Sri Lanka

Parami Abeyrathna¹, Suneth Buddhika Agampodi^{2*}, Manjula Weerasinghe³, Shyamalee Samaranayake⁴, Pahala Hangidi Gedara Janaka Pushpakumara¹

* Corresponding author suneth.agampodi@yale.edu

¹ Department of Family Medicine, Faculty of Medicine and Allied Sciences, Rajarata University of Sri Lanka, Anuradhapura, Sri Lanka

² Department of Internal Medicine, School of Medicine, Yale University, Connecticut, United States of America

³ Department of Community Medicine, Faculty of Medicine and Allied Sciences, Rajarata University of Sri Lanka, Anuradhapura, Sri Lanka

⁴ Department of Family Medicine, Faculty of Medical Sciences, University of Sri Jayawardhanapura, Nugegoda, Sri Lanka

1

21 **Abstract**

22 Despite decades of global health efforts and policies, inequitable access to primary care
23 in low and middle-income countries remains an ongoing challenge. This study assessed
24 accessibility to curative sector-primary healthcare services in the Anuradhapura district of Sri
25 Lanka in 2020 and 2021. In this study, we included both private and state-owned primary care
26 facilities (PCF) and their corresponding primary care doctors (PCD), covering both allopathic
27 and complementary and alternative medicine (CAM) practices. Spatial locations of private sector
28 PCF of the entire district were collected by conducting a comprehensive road-based survey and
29 documenting information from publicly displayed boards. Data on state PCF were collected from
30 provincial health departments (allopathic and Ayurveda). The Spatial Accessibility Index (SAI)
31 of 657 GND (Grama Niladhari Division: the smallest administrative division) was calculated in
32 ARC-GIS using the 2-Steps-Floating-Catchment-Area method in 5 km and 10 km spatial-
33 distances from a GND. The majority of the PCF were allopathic (n=318, 78%) and belonged to
34 the private sector (n=317, 79%) whereas CAM PCD represented one-fifth of the primary care
35 workforce. Average SAI of 4.50×10^{-4} and 4.67×10^{-4} were reported for both 5 km and 10 km
36 spatial-distance. A statistically significant difference in mean SAI was measured between urban
37 and rural populations. The highest SAI were observed from urban populations and it gradually
38 declined towards the rural remotes. The national primary care coverage target of 1 allopathic
39 PCD per 5000 population was achieved only in 64% of the population in a 5 km spatial-distance
40 and it further depleted to 25% with only of state allopathic PCD. SAI was negatively associated
41 with the poverty headcount indices and distance to main roads and the main town
42 (Anuradhapura). While the private allopathic sector is the main primary care provider in this
43 study setting, a significant proportion of the population reported limited primary care access due

44 to their geographic and economic status. Health policymakers need to address primary care
45 workforce shortages in rural for the planning of human and physical resources. SAI can be
46 recommended as a feasible method for healthcare planning and assessing service coverage in
47 low-facility settings.

48 **Keywords** - primary care, spatial accessibility of health services, healthcare disparities,
49 healthcare planning

50

51 **Introduction**

52 Universal health coverage (UHC) refers to “all people having access to the full range of
53 quality health services they need, when and where they need them, without financial hardships”
54 (1). UHC depends on an equitable primary health care (PHC) system. In many countries,
55 community and healthcare facility-based or primary care-oriented approaches integrated to
56 deliver a more efficient and sustainable package of PHC. A primary care doctor (PCD) is the
57 first contact personnel of a health system delivering continuous, comprehensive and coordinated
58 care to patients for a minimum cost. Good primary care access has proven to reduce mortality by
59 both communicable and non-communicable diseases (2,3) which were among the top 10 causes
60 of death worldwide (4).

61 Disparities in primary care access affect UHC because of the unavailability of essential
62 healthcare services and doctors and, increased out-of-pocket expenditures by indirect medical
63 costs for traveling. According to the World Health Organization (WHO) and World Bank, half of
64 the world's population lacked access to essential healthcare services in year 2017 (5). Significant
65 inequalities in the geographic distribution of primary care services were still observed from high-
66 income countries like USA (6) and China (7). Locations of population in urban and rural
67 territories, the extent of infrastructure development and poor socioeconomic status were among
68 the main determinants for the observed disparities (8,9). Although WHO recommends a
69 minimum of 80% population coverage of essential healthcare services through UHC (1),
70 significant proportions of populations especially from lower-middle-income countries (LMIC)
71 still report limited access (9,10). In South-East Asia, UHC service coverage indices (SCI) were
72 ranged from 46% to 82% and Sri Lanka was placed in between: 66% (1).

73 Sri Lanka is considered a LMIC (10) with good maternal and child healthcare indicators
74 over the past years (11). It has a pluralistic health system in which a mixture of medical
75 practitioners from allopathic, Ayurveda, Yunani, Siddha, Homeopathic and indigenous medicine
76 are involved in PHC delivery (11). The Ministry of Health (MoH) in Sri Lanka has proposed
77 PHC reforms intending to achieve UHC by the year 2030 and highlighted the current issues in
78 primary care services (12). Despite the national-level household surveys on healthcare utilization
79 (13), primary care access has not evaluated in the Sri Lankan context previously. The UHC-SCI is
80 calculated weighing the international health regulation core scores, hospital bed density and
81 healthcare workforce at country levels (9) and does not exclusively consider the spatial nature of
82 healthcare access. The spatial accessibility is considered an accurate method for evaluation of
83 healthcare access nowadays with the use of geographic information system (GIS) technology
84 (11). The current study was conducted to assess the spatial accessibility of curative sector primary care
85 services in the Anuradhapura district of Sri Lanka.

86

87 **Methods**

88 **Study setting**

89 This study in the Anuradhapura district of Sri Lanka has conducted between August
90 2020 and December 2021. The district consisted of 22 divisional secretariat (DS) divisions and is
91 primarily rural, with 96% of its population totaling 953,162 residents(12). These DS divisions
92 has subdivided into 694 Grama Niladhari Divisions (GND), the smallest public administrative
93 unit defined by their geographic areas. The majority of the population in Anuradhapura, as in the
94 rest of Sri Lanka, relies on the allopathic healthcare system for their medical needs (13). Primary
95 care services are provided by both the state and private sectors. Primary Medical Care Units

96 (PMCU), Divisional Hospitals (DH), Outpatient Departments (OPD) of Base Hospitals (BH) and
97 OPD of the Teaching Hospital (TH) serve as the main state sector primary care facilities (PCF)
98 providing curative services in Anuradhapura (14). The private sector for curative care comprises
99 private hospitals with OPD services and private sector allopathic practitioners, often referred to
100 as general practitioners or GP, who are state medical officers practicing outside regular working
101 hours (15). Preventive PHC services are provided through a state services consisting of a team
102 led by the Medical Officer of Health (MOH). PHC services through CAM practices are provided
103 through a network of state funded Ayurveda hospitals (16). Private PCF of CAM included
104 several other practitioners following indigenous medicine, Yunani, Siddha, and homeopathy
105 scattered in the remotes and sub-urban regions of Anuradhapura (17).

106 Despite the state PCF being listed, mapped, and included in public databases, the
107 situation is different for private PCFs in Sri Lanka. While there is a registration system in place,
108 managed by the regional director of health services, it is incomplete, and crucial data on the total
109 number of facilities and their spatial locations are unavailable.

110 **Data sources and collection**

111 All data collected for this analysis was either secondary data available in registers,
112 publically displayed data or GIS data on PCF. Data on PCF and Primary Care Doctors (PCD)
113 were collected from different sources (Table 1).

114

115 **Table 1. Data sources and collection methods for Primary Care Facilities (PCF) and**
116 **Primary Care Doctors (PCD)**

Entity	Data sources and collection methods
State allopathic PCF and PCD	List of PCF and PCD from Provincial

	Director of Health Services, verified by physical visit for GPS data
State CAM PCF and PCD	List of PCF and available PCD from Provincial Ayurveda Department of North Central Province, verified by physical visit for GPS data
Private allopathic PCF and PCD	Collection of GPS coordinates by visiting the PCF and confirmed by the availability of public display boards and key informants of the neighbourhood
Private CAM PCF and PCD	Collection of GPS coordinates by visiting the PCF and confirmed by the availability of public display boards and key informants of the neighbourhood

117

118 GPS: Global Positioning System, CAM: Complementary and Alternative Medicine, PCF: Primary Care Facility

119 PCD: Primary Care Doctors

120 The total number of state allopathic and CAM PCD was referred from the official records
 121 from the Provincial Director of Health Services office and the Provincial Ayurvedic Department
 122 of the district. The global positioning system (GPS) locations of state allopathic and CAM PCF
 123 were verified with the site visits after referring to available records at these institutions.

124 The locations of private allopathic PCF were included only if they had a registration
 125 number from the Sri Lanka Medical Council (SLMC) on public display. Similar criteria were
 126 implemented for recognizing Private CAM practitioners who were registered at Ayurvedic

127 Medical Council of Sri Lanka. The presence of a PCF was confirmed by the availability of
128 public display boards and verification by a key informant who is well aware of the area such as
129 *Grama Niladhari* or an officer of community-based organization. The locations of private
130 allopathic and CAM PCF in the entire district were collected using the GPS coordinates by
131 trained research assistants. GPS data were marked by using a special GPS device: Juno device
132 (18). The spatial location, the no of Primary Care Doctors (PCD) at the facility and type of PCF
133 were recorded and no information on individually identifiable data of the PCD was included.

134 Population data in the year 2019 of GND and divisional secretariat divisions were
135 collected from official records (19). Spatial administrative maps of GND, divisional secretariat
136 divisions and towns including road networks of the district were collected from the Department
137 of Survey, Sri Lanka. Socio-demographic data were collected from the District Statistical
138 Handbook of the Department of Census and Statistics of Sri Lanka (12).

139 **Data analysis**

140 The Two Steps Floating Catchment Area-2SFCA (20) method was used to calculate the
141 Spatial Accessibility Index (SAI) using ARC ESRI Geographic Information System (GIS)
142 software version 9.5. A PCD to population ratio within areas of 5 km and 10 km spatial-distance
143 from a PCF was calculated. SAI was calculated by summing up the PCD to population ratios that
144 lie within the 5 km and 10 km boundary marked from the population center of each GND
145 through ARC GIS software (21). SAI is indicated in terms of the number of PCD per 10,000
146 population within the particular spatial-distance.

147 The collected data of spatial maps with SAI were exported as Microsoft Excel sheets and
148 analysis was conducted using IBM SPSS Statistics for Windows, Version 25.0. The nearest
149 facility tool and nearby tables of ARC GIS were used to identify the nearest PCF, spatial

150 distance to the nearest road with public transport, and spatial distance to Anuradhapura city from
151 each GND. The Anuradhapura town, the only urban council of the district with 25 GND (22),
152 was marked as the urban area of the district.

153 **Ethics statement**

154 The ethics approval study was obtained from the Ethics Review Committee, Faculty of
155 Medicine and Allied Sciences, Rajarata University of Sri Lanka (ERC/2020/66). The secondary
156 data were obtained from the relevant authorities based on the administrative permission given by
157 the authorised officers. No incentives were offered to any individuals participated in the study.
158 All the participants who provided confirmation on locations of PCF were provided with a
159 information leaflet and data were collected after obtaining the written informed consent. No
160 personal identification or contact details were collected.

161

162 **Results**

163 In the State Allopathic sector, primary care services was predominantly delivered by DH
164 Type C, which housed 22 PCF (5.5% of the total) and 44 PCD (Table 2). Nevertheless, private
165 allopathic providers played the central role, constituting 63.7% of PCF and 49% of PCD. The
166 State Ayurvedic Sector contributed with 25 PCF (6.2%) and 56 PCD (11%), while the Private
167 Sector Complementary and Alternative Medicine (CAM) included 60 PCF (14.8%) and 60 PCD
168 (11%). In total, the district had 403 PCF and 523 PCD. These findings illuminate the diverse
169 landscape of primary care provision, with a notable presence of private and CAM practitioners,
170 offering valuable insights for healthcare planning and resource allocation in the region.

171

172 **Table 2 An Overview of primary care facilities and primary care doctors in Anuradhapura**
 173 **District, Sri Lanka**

Primary care facility	No of facilities (%)	No of primary care doctors (%)
State allopathic sector		
Teaching hospital of Anuradhapura	1 (0.3%)	20 (4%)
Base hospital	6 (1.5%)	30 (6%)
Divisional hospital-A	2 (0.5%)	8 (2%)
Divisional hospital-B	9 (2.2%)	27 (5%)
Divisional hospital C	22 (5.5%)	44 (8%)
PMCU	21 (5.2%)	21 (4%)
Private allopathic		
Private allopathic	257 (63.7%)	257 (49%)
State Ayurvedic sector		
State Ayurveda hospitals with OPD and MOH centers	25 (6.2%)	56 (11%)
Private sector Complementary and Alternative Medicine (CAM)		
Private CAM practitioners	60 (14.8%)	60 (11%)
Total	403(100%)	523(100%)

174

175 OPD: Out Patient Departments PMCU: Primary Medical Care Units MOH:Medical Officer of Health

176

177 Most of the PCF were close to urbanized regions and the suburbs in Anuradhapura
 178 district (Fig 1). PCF located close to the district border were scarce in number and scattered
 179 throughout.

180

181 **Fig 1. Spatial distribution of primary care facilities in Anuradhapura district of Sri Lanka**

182 A total of 3 GND reported the highest SAI (15 /10,000) and located within a 5 km
 183 spatial-distance of Anuradhapura town (Table 2). A private allopathic PCF was closest to 377
 184 GND (57%). Across all PCF, there is an average of 5 PCD per 10,000 population, with a mean
 185 spatial-distance of 2.4 km and a standard deviation of 1.8 km (Table 3). Urban areas exhibit
 186 higher PCD density (13 per 10,000 population) and shorter mean spatial distances (0.5 km at 5
 187 km spatial-distance and 0.3 km at 10 km spatial-distance) compared to rural areas (4 doctors per
 188 10,000 population and a mean distance of 2.5 km, SD = 1.8 km). The Allopathic state sector and
 189 the Allopathic private sector both report 2 PCDs per 10,000 population and similar mean
 190 distances. CAM PCF have 1 doctor per 10,000 population, with a mean spatial-distance of 2.3
 191 km.

192
 193 **Table 3 Spatial Accessibility Indices and proximity of curative sector primary care services**
 194 **in Anuradhapura district, Sri Lanka**

Category	SAI (the number of primary care doctors per 10,000 population)		Spatial distance from a GND to the closest primary care facility (km)	
	5 km spatial distance	10 km spatial distance	Mean	2SD
Type of primary care provider				
All primary care facilities	5	5	2.4	1.8
Allopathic state sector	-	2	2.9	2.1
Allopathic private sector	-	2	2.4	1.7
All allopathic primary care	4	4	2.4	1.9

facilities				
All CAM primary care facilities	1	1	2.3	1.7
Location of population				
Urban	13	9	0.5	0.3
Allopathic state sector	-	2	0.5	0.2
Allopathic private sector	-	5	0.6	0.4
Rural	4	5	2.5	1.8
Allopathic state sector	-	2	3	2.1
Allopathic private sector	-	2	2	1.7

195 SAI: Spatial Accessibility Index CAM: Complementary and Alternative Medicine GND: Grama Niladhari Division

196

197 The spatial maps with SAI showed the inequitable distribution of SAI of primary care in the
 198 district between different types of providers and within different spatial distances from a GND
 199 (Fig 2). Higher SAI were observed in and around urbanized areas (Fig 1.). Lower values were
 200 more towards rural areas and district border. One-fourth of the population lived in areas with low
 201 primary care accessibility ($SAI < 1.72 \times 10^{-4}$).

202

203 **Fig 2. Spatial of distribution of Spatial Accessibility Index (SAI) of different types of**
 204 **primary care facilities in Anuradhapura district of Sri Lanka**

205 The national target for primary care coverage (NPCC) of 1 PCD (if both allopathic and
 206 CAM are included) to 5000 population ratio was achieved in 70% (n=464) and 92% (n=605) of
 207 GND within 5 km and 10 km Spatial-distances. The coverage of 1 allopathic PCD to 5000
 208 population ratio was achieved in 64% (n=420) and 86 % (n=565) GND within 5 km and 10 km

209 Spatial-distances. Individual state and private allopathic PCD contributed 25% (n=166) and 56%
210 (n=368) of GND to achieve NPCC in 10 km spatial-distance (Fig 3).

211
212 **Fig 3. Spatial distribution of Grama Niladhari Divisions which achieved National Primary**
213 **Care Coverage targets by state and private sector primary care doctors in Anuradhapura**
214 **district of Sri Lanka**

215 The difference between SAI values of the urban and rural areas was significant in 5 km
216 and 10 km spatial-distance, $p < 0.005$ (Independent sample t-test). The distance to the main road (r
217 = -0.218 , $p = 0.0000$, 5 km Spatial-distance) and the distance to main town, Anuradhapura ($r = -$
218 0.269 , $p = 0.000$, 5 km Spatial-distance) negatively correlated with SAI (S1 Table). SAI of
219 divisional secretariat divisions within a 5 km Spatial-distance negatively correlated with poverty
220 head count index ($r = -0.620$, $p = 0.002$). A positive correlation was observed between the mean
221 SAI of divisional secretariat divisions (within 5 km Spatial-distance) and the population density,
222 $p < 0.001$ ($r = 0.754$).

223

224 **Discussion**

225 This study would be the first spatial methodological and GIS-based study in Sri Lanka to
226 describe primary care spatial accessibility. It revealed how the private sector has expanded in
227 both urban and rural populations as the main primary care provider. The spatial concentration of
228 PCF was marked in urbanized areas compared to rural remotes. Despite the efforts for improving
229 the human and physical resources related to PHC services in the country, it was alarming to find
230 the gaps in rural service coverage and the relationship of accessibility with poverty indices and
231 infrastructure facilities. The disparities in primary care access need to be recognized and

232 evaluated by the policymakers for strategic planning to achieve 80% of UHC SCI by the year
233 2030. The spatial allocation of healthcare resources (23,24) with the use of SAI could be more
234 helpful in low facility settings. One of the best evidence was provided from a Portuguese study
235 and it demonstrated how the enhanced-2SFCA method was used to implement a new healthcare
236 reform initiative for establishing emergency network points in a convenient distance to their
237 residents (25).

238 Though the quality of service delivery at private hospitals was widely discussed in Sri
239 Lankan health system-related studies (15,26) attribution of private allopathic PCF was
240 overlooked due to lack of accurate databases (27). Although state healthcare staff was distributed
241 proportionate to the patient capacity of the healthcare facilities, dismissal of spatial accessibility
242 of the facilities has led to a disproportionate division of the healthcare workforce in the country.
243 According to the study, only around one-third of the population in the district was located more
244 than 5 km spatial-distance to reach their closest PCF. However, MoH reported that as high as
245 58% (28). The precise identification of spatial locations and comprehensive data collection
246 greatly contributed to the accurate assessment of SAI through this study and it partially explains
247 the observed difference between the surveys.

248 Based on the data, it is evident that the private sector was highly involved in the primary
249 care workforce, accounting for 78% of it within the district. However the local reports
250 highlighted an intriguing trend whereby households favoured utilizing state allopathic OPD
251 (22%) as opposed to private allopathic PCF, 15% (29). When evaluating healthcare services
252 utilization, it's crucial to take into account the operating hours of PCF. More than just physical
253 accessibility but affordability, accommodation, and accountability should be considered when
254 comparing state and private PCF. The cost of private healthcare services in rural communities

255 could potentially impose a financial burden on households (30), leading to limited access to
256 healthcare.

257 The significant level of urban-rural disparity which observed in the study was reported in
258 both LMIC (31,32) and HIC (33,34). The spatial concentration of PCD in urban areas was
259 observed in this study due to two main factors: (1) the availability of tertiary and secondary care
260 hospitals and (2) the higher availability of private allopathic practitioners. Several studies
261 demonstrated how access to infrastructure and household income levels were associated with
262 primary care spatial accessibility (24,35). Rural areas present significant challenges to retention
263 of doctors due to various factors including inadequate physical infrastructure, limited educational
264 opportunities, and lack of career development programs and earning opportunities. (36,37). The
265 economic crisis in Sri Lanka could cause rural areas to lose doctors, further limiting healthcare
266 access (38).

267 Within the district, the number of PCD to population ratio was reported as 3 for 20,000
268 population. Sri Lanka's overall PCD to population ratio is unknown, but for the overall doctors
269 from different levels of care (primary, secondary and tertiary), the ratio was 1:1000 (39). The
270 total number of private allopathic PCD reported in the study was comparatively larger than the
271 national reports of WHO (n=950) in 2021 (40). The unavailability of a proper GP registration
272 system in the country is a main setback for accurate estimates of primary care workforces and
273 predicting UHC SCI.

274 Intending to expand PHC services, the MoH has proposed a "shared care cluster system"
275 as part of PHC reforms with an NPCC target of 1 PCD to a population of 5000 (14). Only 25%
276 of the district population achieved NPCC via state-sector PCD, but the value reached 64% with
277 the involvement of the private sector. A significant amount of remodeling of state PCF is needed

278 to achieve the required primary care workforce in the district. The high level of private sector
279 involvement raises the out-of-pocket expenses of the population. While regulating the quality of
280 the private sector PCF, a coordinated collaboration between the state and private sector would be
281 a timely strategy to achieve NPCC in the district and UHC SCI. A Proper assessment of
282 equitable distribution of facilities should be a part of the healthcare facility planning process with
283 feasible methods such as SAI spending minimal funds other than human efforts.

284 In low facility settings, transition from single PCD to primary care teams to primary care
285 teams (41) and extension of telemedicine to remote areas (42,43) would improve primary care
286 access for less expenditures.

287 **Limitations**

288 MOH in the state sector was excluded from the study as most of his curative services
289 were focused on specific areas in the preventive sector (e.g. maternal and child health) and not
290 engaged in an open-extended commitment to primary care. Spatial maps which used in this study
291 were last updated in year 2015 and the current boundaries and names of the GND might be
292 different. The true SAI value may be different in some of the GND because of the edge effect
293 (44) and geographical barriers (45) which were not considered in the analysis.

294 **Conclusion**

295 The allopathic sector was the major primary care provider and, the private sector
296 contributed to more than 75% of the primary care workforce in the Anuradhapura district.
297 Ayurveda PCD provided one-fifth of the primary care workforce. Disparities in primary care
298 access occurred due to socio-demographic factors such as the living location of the residents
299 (rural or urban), infrastructure facilities, and the income level of the households. Nearly one-third
300 of the population did not achieve NPCC requirements. Policy-level initiatives are needed to

301 regulate the private sector, increase the retention of rural PCD and overcome urban-rural
302 disparity in healthcare access. The spatial accessibility approach would be a feasible method to
303 assess the equity of primary care access and resolve service gaps during healthcare planning.

304 **Acknowledgements**

305 Technical support for ARC GIS analysis: PM Kankanamge, University of
306 Sabaragamuwa, Sri Lanka and JMVA Jayawardhana Postgraduate Institute of Sciences,
307 University of Peradeniya Sri Lanka.

308 **Author Contributions**

309 Conceived and designed the study: PA, MW, SBA, SS, PHGJP. Funding acquisition for
310 the study: PA. Supervision: PHGJP, SS, SBA. Performed the study: PA, MW, SBA, PHGJP.
311 Analyzed the data: PA, SBA, SS, PHGJP. Contributed materials/analysis tools: PA, MW, SBA,
312 PHGJP. Wrote the paper: PA, MW, SBA, SS, PHGJP.

313

314 **References**

- 315 1. World Health Organization. Universal Health Coverage. Available from:
316 <https://www.who.int/health-topics/universal-health-coverage>
- 317 2. Shi L, Macinko J, Starfield B, Wulu J, Regan J, Politzer R. The relationship between
318 primary care, income inequality, and mortality in US States, 1980-1995. *J Am Board Fam*
319 *Pract.* 2003;16(5):412–22. doi:10.3122/jabfm.16.5.412
- 320 3. Gulliford MC. Availability of primary care doctors and population health in England: is
321 there an association? *J Public Health (Bangkok)*. 2002;24(4):252–4. doi:
322 10.1093/pubmed/24.4.252
- 323 4. World Health Organization. WHO - The top 10 causes of death. 2020 [cited 2022 Oct 15].
324 Available from: [https://www.who.int/news-room/fact-sheets/detail/the-top-10-causes-of-](https://www.who.int/news-room/fact-sheets/detail/the-top-10-causes-of-death)
325 [death](https://www.who.int/news-room/fact-sheets/detail/the-top-10-causes-of-death)
- 326 5. World Health Organization. World Bank and WHO: Half the world lacks access to
327 essential health services, 100 million still pushed into extreme poverty because of health
328 expenses. 2017. Available from: [https://www.who.int/news/item/13-12-2017-world-bank-](https://www.who.int/news/item/13-12-2017-world-bank-and-who-half-the-world-lacks-access-to-essential-health-services-100-million-still-pushed-into-extreme-poverty-because-of-health-expenses)
329 [and-who-half-the-world-lacks-access-to-essential-health-services-100-million-still-](https://www.who.int/news/item/13-12-2017-world-bank-and-who-half-the-world-lacks-access-to-essential-health-services-100-million-still-pushed-into-extreme-poverty-because-of-health-expenses)
330 [pushed-into-extreme-poverty-because-of-health-expenses](https://www.who.int/news/item/13-12-2017-world-bank-and-who-half-the-world-lacks-access-to-essential-health-services-100-million-still-pushed-into-extreme-poverty-because-of-health-expenses)
- 331 6. Hoyer D, Dee E. Using Healthy People as a Tool to Identify Health Disparities and
332 Advance Health Equity. 2022 ;28(5):562–9. doi: 10.1097/phh.0000000000001601
- 333 7. Zhang T, Xu Y, Ren J, Sun L, Liu C. Inequality in the distribution of health resources and
334 health services in China: Hospitals versus primary care institutions. *Int J Equity Health*.
335 2017;16(1):1–8. doi: 10.1186/s12939-017-0543-9
- 336 8. Ab Hamid, J., Juni, M. H., Abdul Manaf, R., Syed Ismail, S. N., & Lim PY. Spatial

- 337 Accessibility of Primary Care in the Dual Public–Private Health System in Rural Areas,
338 Malaysia. *Int J Environ Res Public Health*. 2022;20(4):3147. doi:10.3390/ijerph20043147
- 339 9. Tracking Universal Health Coverage: 2023 Global Monitoring Report. Tracking Universal
340 Health Coverage: 2023 Global Monitoring Report. 2023.
- 341 10. Peters DH, Garg A, Bloom G, Walker DG, Brieger WR, Hafizur Rahman M. Poverty and
342 Access to Health Care in Developing Countries. *Ann N Y Acad Sci* . 2008 ;1136(1):161–
343 71. doi: 10.1196/annals.1425.011
- 344 11. Rosero-Bixby L. Spatial access to health care in Costa Rica and its equity: a GIS-based
345 study. *Soc Sci Med [Internet]*. 2004;58(7):1271–84. doi: 10.1016/S0277-9536(03)00322-8
- 346 12. Department of Census and Statistics Sri Lanka. Handbook Dictionary Anuradhapura.
347 2020. District Statistical Handbook Anuradhapura 2020. Available from:
348 <http://www.statistics.gov.lk/ref/HandbookDictionary>
- 349 13. Rajapaksa L, De Silva P, Abeykoon P, Somatunga L, Sathasivam S, Perera S, et al. Sri
350 Lanka health system review. *Health Systems in Transition*. 2021;10. Available from:
351 <https://apo.who.int/publications/i/item/sri-lanka-health-system-review>
- 352 14. Ministry of Health N and IMSL. Reorganising Primary Health Care in Sri Lanka
353 "Preserving Our Progress, Preparing Our Future ". 2017. Available from:
354 <http://www.health.gov.lk>
- 355 15. Perera HSR. Case study from Sri Lanka PRIMARY HEALTH CARE SYSTEMS
356 (PRIMASYS). 2017. Available from: <http://apps.who.int/bookorders>.
- 357 16. Jones M, Liyanage C. Traditional Medicine and Primary Health Care in Sri Lanka: Policy,
358 Perceptions, and Practice. *Asian Rev World Hist*. 2018 ;6(1):157–84. Available from:
359 https://brill.com/view/journals/arwh/6/1/article-p157_157.xml

- 360 17. Gamage CK. Dissemination and Preservation of Indigenous Medical Knowledge: A study
361 Based on Special Secret Method of Communication of *Vedageta* (Medicinal Puzzles)
362 Used in the Field of Indigenous Medicine in Sri Lanka. J Univ Libr Assoc Sri Lanka.
363 2019;22(2):129. Available from: <http://jula.sljol.info/articles/10.4038/jula.v22i2.7942/>
364 18. geospatial.trimble.com. Datasheet. 2017 [cited 2023 May 29]. p. 1–2 Trimble Juno 5.
365 Available from: [https://geospatial.trimble.com/sites/geospatial.trimble.com/files/2017-](https://geospatial.trimble.com/sites/geospatial.trimble.com/files/2017-10/Juno%205%20Series%20Datasheet_0.pdf)
366 [10/Juno 5 Series Datasheet_0.pdf](https://geospatial.trimble.com/sites/geospatial.trimble.com/files/2017-10/Juno 5 Series Datasheet_0.pdf)
- 367 19. Department of Census and Statistics SL. Grama Niladhari Divisions Statistics 2020
368 Available from: <http://www.statistics.gov.lk/Population/StaticInformation/GNDRReports>
- 369 20. Wang F, Luo W. Assessing spatial and nonspatial factors for healthcare access: Towards
370 an integrated approach to defining health professional shortage areas. Heal Place. 2005
371 Jun 1;11(2):131–46. doi: 10.1016/j.healthplace.2004.02.003
- 372 21. Guagliardo MF. Spatial accessibility of primary care: Concepts, methods and challenges.
373 Int J Health Geogr; 2004;3. doi: 10.1186/1476-072X-3-3
- 374 22. Department of Survey SL. Distribution of Grama Niladharai Divisions in Anuradhapura
375 Municipal Council. 2013. Available from:
376 https://www.mpclg.gov.lk/web/images/wardmaps/a_pura/01_Apura_AnuradhapuraMC.pdf
377 f
- 378 23. Noree T, Pagaiya N, Nimmual I. Effect of doctor allocation policies on the equitable
379 distribution of doctors in Thailand. Hum Resour Health. 2023;21(1):1–7. doi:
380 10.1186/s12960-022-00782-5
- 381 24. Wan S, Chen Y, Xiao Y, Zhao Q, Li M, Wu S. Spatial analysis and evaluation of medical
382 resource allocation in China based on geographic big data. BMC Health Serv Res.

- 383 2021;21(1):1–18. doi: 10.1186/s12913-021-07119-3
- 384 25. Lopes, H. S., Ribeiro, V., & Remoaldo PC. Spatial Accessibility and Social Inclusion: The
385 Impact of Portugal’s Last Health Reform. *Geohealth*. 2019;3(11):356–368. doi:
386 10.1029/2018GH000165
- 387 26. Govindaraj R, Navaratne K, Cavagnero E, Seshadri SR. The world bank: health care in Sri
388 Lanka: What Can the Private Health Sector Offer?. 2014. Available from:
389 [http://documents.worldbank.org/curated/en/423511468307190661/pdf/899540WP0Box38](http://documents.worldbank.org/curated/en/423511468307190661/pdf/899540WP0Box380th0Care0in0Sri0Lanka.pdf)
390 [0th0Care0in0Sri0Lanka.pdf](http://documents.worldbank.org/curated/en/423511468307190661/pdf/899540WP0Box380th0Care0in0Sri0Lanka.pdf)
- 391 27. Amarasinghe S, De Alwis S, Rannan-Eliya RP, Dalpatadu S. Private Health Sector
392 Review. *IHP Tech Reports Ser*. 2012;(2). Available from: <http://www.ihp.lk>
- 393 28. Department of Census and Statistics SL. Grama Niladhari Divisions Statistics - 2020:
394 Anuradhapura District. 2020. Available from:
395 [http://www.statistics.gov.lk/Resource/en/Population/GND_Reports/2020/Anuradhapura.p](http://www.statistics.gov.lk/Resource/en/Population/GND_Reports/2020/Anuradhapura.pdf)
396 [df](http://www.statistics.gov.lk/Resource/en/Population/GND_Reports/2020/Anuradhapura.pdf)
- 397 29. Lanka D of C and SS. Household Income and Expenditure. 2016. Available from:
398 http://www.statistics.gov.lk/HIES/HIES2016/HIES2016_FinalReport.pdf
- 399 30. Senanayake SJ, Gunawardena NS, Palihawadana P, Bandara S, Bandara P, Ranasinghe
400 AU, et al. Out-of-pocket expenditure in accessing healthcare services among Chronic
401 Kidney Disease patients in Anuradhapura District. *Ceylon Med J*. 2017;62(2):100. doi:
402 10.4038/cmj.v62i2.8475
- 403 31. Vadrevu L, Kanjilal B. Measuring spatial equity and access to maternal health services
404 using enhanced two step floating catchment area method (E2SFCA) - A case study of the
405 Indian Sundarbans. *Int J Equity Health*. 2016;15(1):87. doi: 10.1186/s12939-016-0376-y

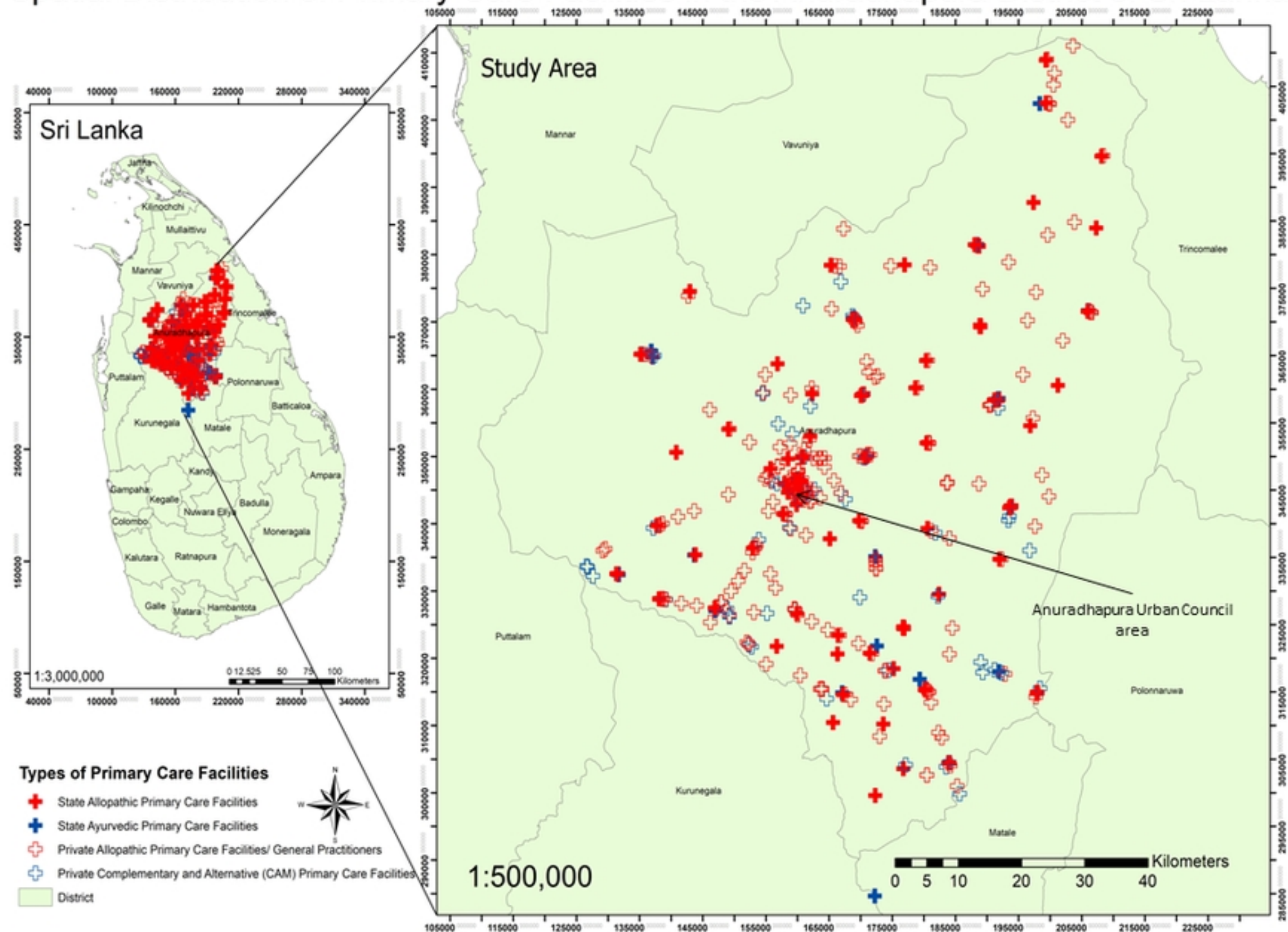
- 406 32. Zafri NM, Nurullah M, Neema MN, Waliullah M. Spatial accessibility to healthcare
407 facilities in coastal region of Bangladesh. *Int J Health Plann Manage*. 2021;36(3):643–55.
408 doi: 10.1002/HPM.
- 409 33. McGrail MR, Humphreys JS. Spatial access disparities to primary health care in rural and
410 remote Australia. *Geospat Health*. 2015;10(2):138–43. doi: 10.4081/gh.2015.358
- 411 34. Bauer J, Müller R, Brüggmann D, Groneberg DA. Spatial Accessibility of Primary Care in
412 England: A Cross-Sectional Study Using a Floating Catchment Area Method. *Health Serv*
413 *Res*. 2018;53(3):1957–78. doi: 10.1111/1475-6773.12731
- 414 35. Ahcène Zehnat. Dynamics of the geographical distribution of private physicians in
415 Algeria. *Eur J Geogr*. 2021. doi: 10.4000/cybergeogeo.36723
- 416 36. Lehmann U, Dieleman M, Martineau T. Staffing remote rural areas in middle- and low-
417 income countries: A literature review of attraction and retention. *BMC Health Serv Res*.
418 2008;8(1):1–10
- 419 37. Mohammadiaghdam N, Doshmangir L, Babaie J, Khabiri R, Ponnet K. Determining
420 factors in the retention of physicians in rural and underdeveloped areas: a systematic
421 review. *BMC Fam Pract*. 2020;21(1):1–23. Available from:
422 <https://bmcprimcare.biomedcentral.com/articles/10.1186/s12875-020-01279-7>
- 423 38. Samaraweera, K.G. Upekshani TG. DOCTORS’ BRAIN DRAIN IN SRI LANKA.
424 <https://aquinas.lk/>. 2023; Available from: [https://aquinas.lk/research_doc/14.-Doctors’-
425 Brain-Drain-in-Sri-Lanka.pdf](https://aquinas.lk/research_doc/14.-Doctors'-Brain-Drain-in-Sri-Lanka.pdf)
- 426 39. Ministry of health Sri Lanka. Annual Health Bulletin. 2020. Available from:
427 www.health.gov.lk
- 428 40. World Health Organization (WHO). Global health observatory data repository. 2023.

- 429 Available from: <https://apps.who.int/gho/data/view.main.HWFMEDv>
- 430 41. Bodenheimer T, Pham HH. Primary care: Current problems and proposed solutions. *Health*
431 *Affairs*. *Health Affairs*; 2010;29:799–805. doi:
432 10.1377/HLTHAFF.2010.0026/ASSET/IMAGES/LARGE/2010.0026FIGEX1.JPEG
- 433 42. Downes MJ, Mervin MC, Byrnes JM, Scuffham PA. Telephone consultations for general
434 practice: A systematic review. *Syst Rev*. 2017;6(1). Available from:
435 <https://pubmed.ncbi.nlm.nih.gov/28673333/>
- 436 43. Hilty DM, Yellowlees PM, Cobb HC, Bourgeois JA, Neufeld JD, Nesbitt TS. Models of
437 Telepsychiatric Consultation–Liaison Service to Rural Primary Care. *Psychosomatics*.
438 2006;47(2):152–7. doi: 10.1176/APPL.PSY.47.2.152
- 439 44. Gao F, Kihal W, Meur N, Souris M, Deguen S. Does the edge effect impact on the
440 measure of spatial accessibility to healthcare providers? *Int J Health Geogr* 2017;16(1):1–
441 16. doi: 10.1186/s12942-017-0119-3
- 442 45. Turnbull J, Martin D, Lattimer V, Pope C, Culliford D. Does distance matter?
443 Geographical variation in GP out-of-hours service use: An observational study. *Br J Gen*
444 *Pract*. 2008;58(552):471–7. doi: 10.3399/bjgp08X319431
- 445

446 **Supporting information**

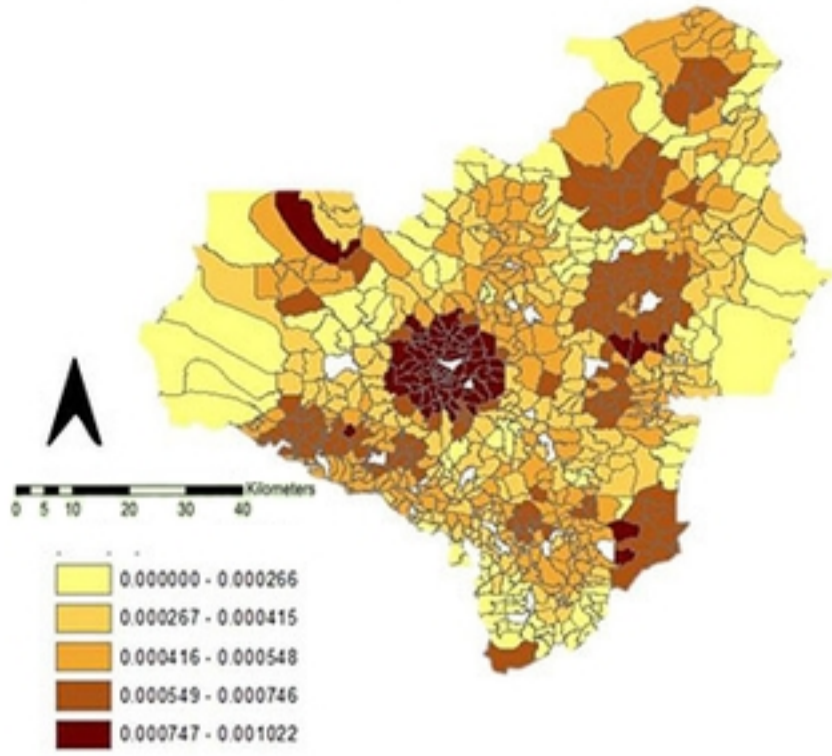
447 **S1 Table Spatial Accessibility Index (SAI), proximity to closest primary care facilities and**
448 **poverty data of Anuradhapura District of Sri Lanka**

Spatial Distribution of Primary Care Facilities in the Anuradhapura District of Sri Lanka

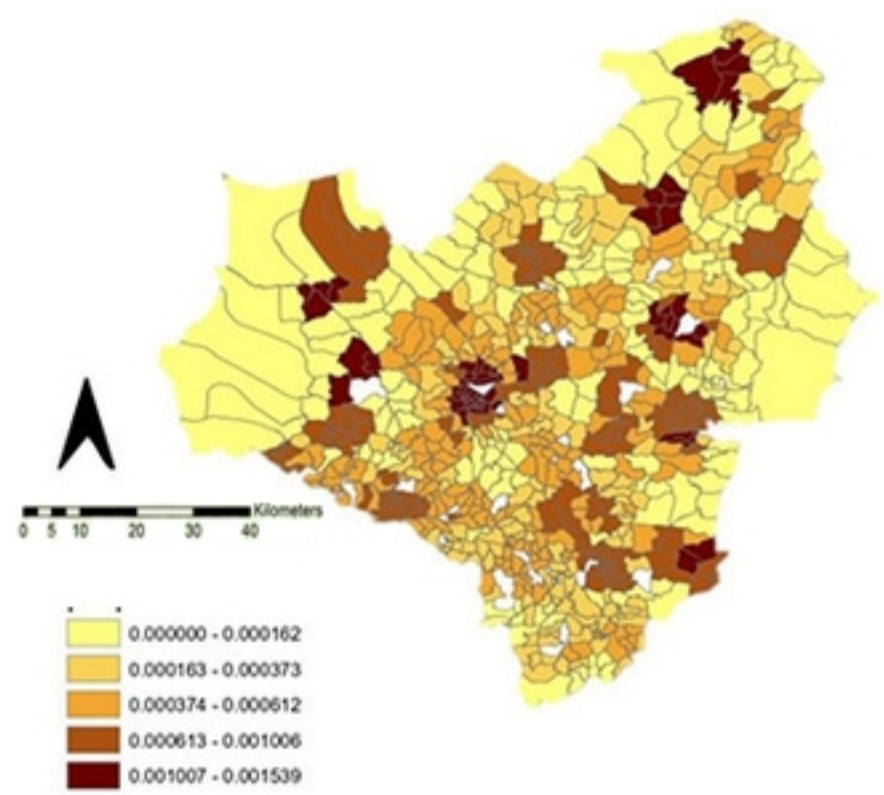


Figure

(a) Spatial Accessibility Index (SAI) of all primary care facilities /10km spatial-distance

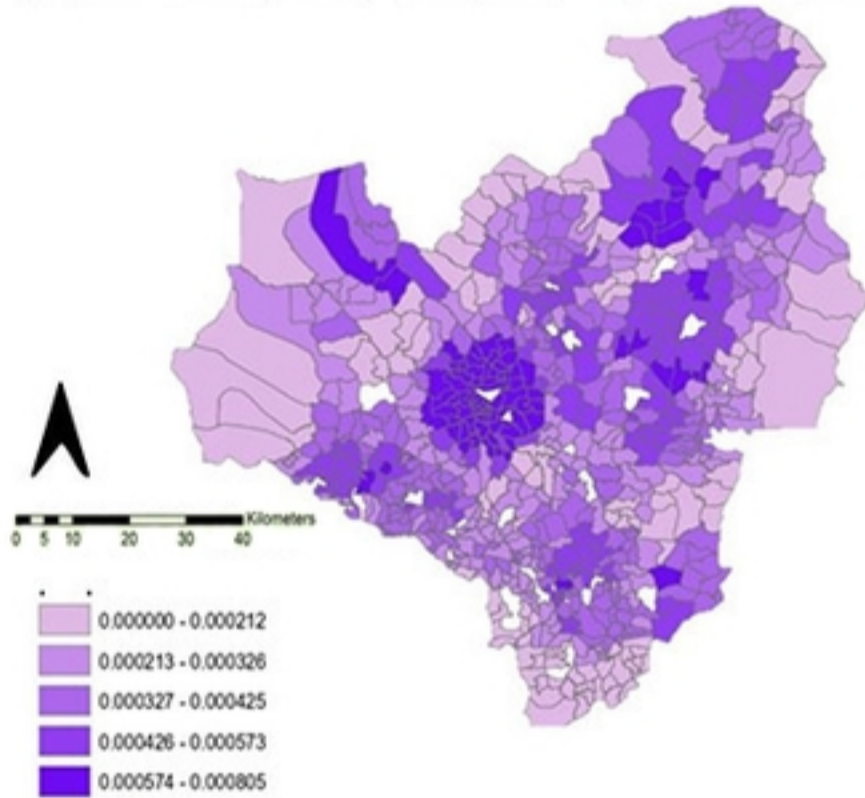


(b) Spatial Accessibility Index (SAI) of all primary care facilities /5km spatial-distance

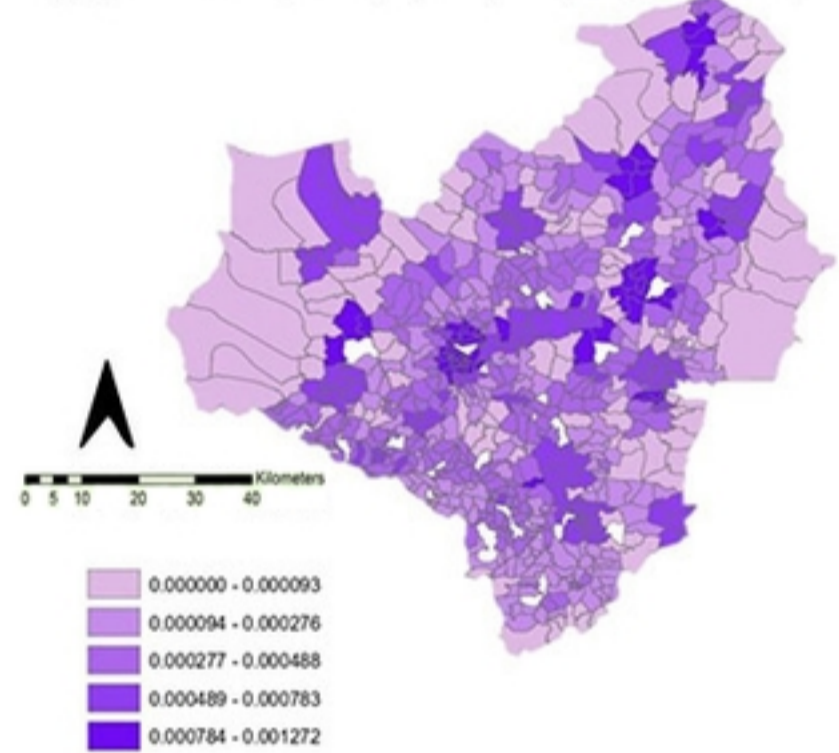


medRxiv preprint doi: <https://doi.org/10.1101/2024.01.10.24301140>; this version posted January 12, 2024. The copyright holder for this preprint (which was not certified by peer review) is the author/funder, who has granted medRxiv a license to display the preprint in perpetuity.

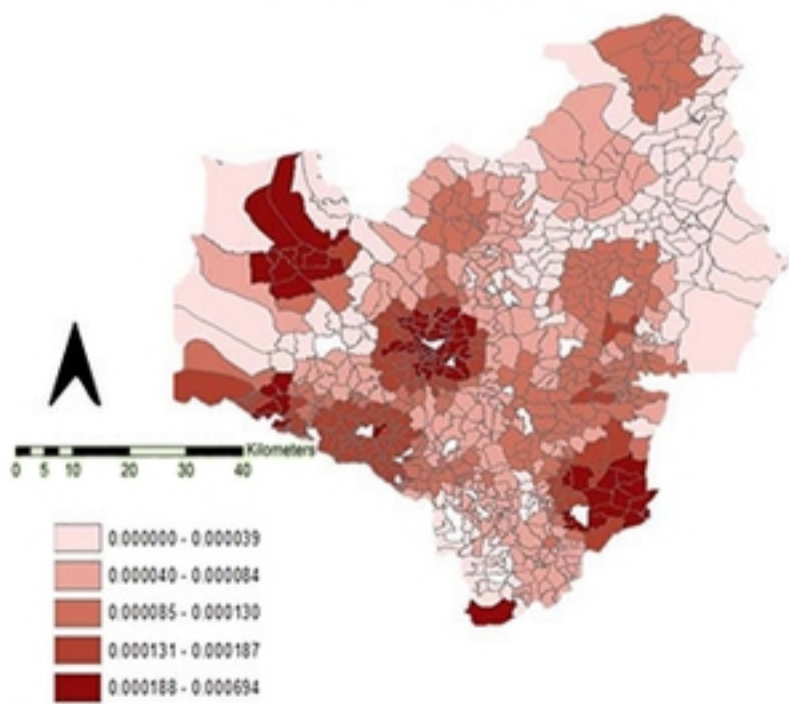
(c) Spatial Accessibility Index (SAI) of allopathic primary care facilities /10km spatial-distance



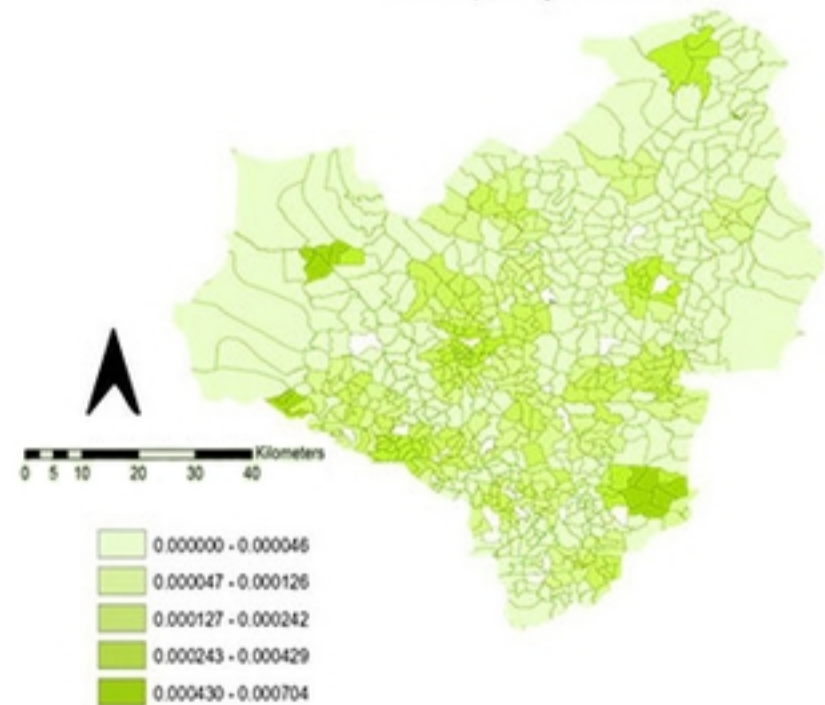
(d) Spatial Accessibility Index (SAI) of allopathic primary care facilities /5km spatial-distance



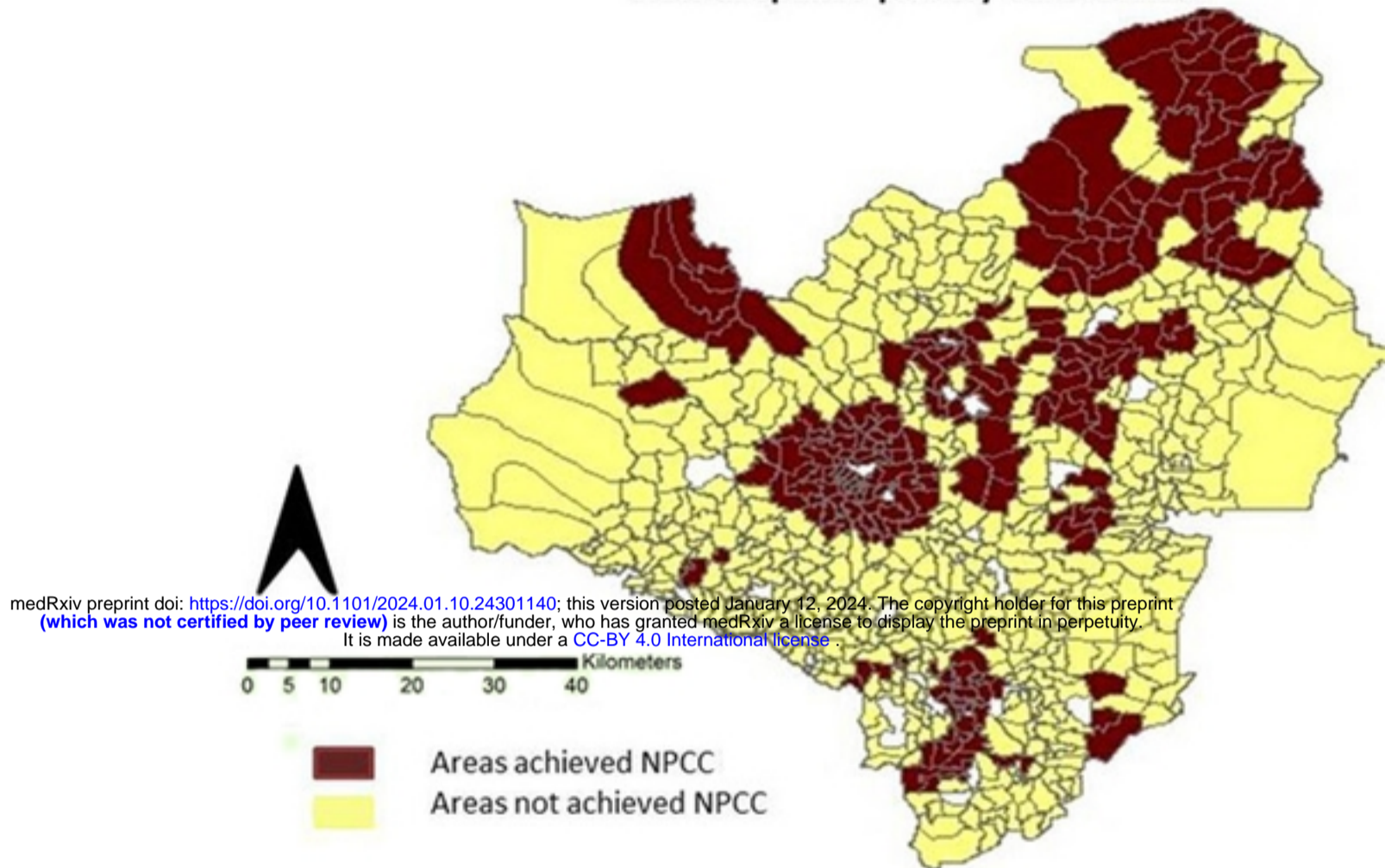
(e) Spatial Accessibility Index (SAI) of complementary and alternative (CAM) primary care facilities /10km spatial-distance



(f) Spatial Accessibility Index (SAI) of complementary and alternative (CAM) primary care facilities /5km spatial-distance



(a) Spatial Accessibility Index (SAI) according to National primary Care Coverage (NPCC) by state allopathic primary care facilities



(b) Spatial Accessibility Index (SAI) according to National primary Care Coverage (NPCC) targets by private allopathic primary care facilities

