

---

# UNEXPECTED TRANSMISSION DYNAMICS IN A UNIVERSITY TOWN: LESSONS FROM COVID-19

---

Erin Clancey<sup>1,†,\*</sup>, Matthew S. Mietchen<sup>2,†</sup>, Corrin McMichael<sup>3</sup> and Eric T. Lofgren<sup>1</sup>

<sup>1</sup>Paul G. Allen School for Global Health, Washington State University, Pullman, WA

<sup>2</sup>Carolina Population Center, University of North Carolina, Chapel Hill, NC

<sup>3</sup>Whitman County Public Health Department, Colfax, WA

<sup>†</sup>Authors contributed equally to this work

\*Correspondence: [erin.clancey@wsu.edu](mailto:erin.clancey@wsu.edu)

## ABSTRACT

Institutions of higher education faced a number of challenges during the COVID-19 pandemic. Chief among them was whether or not to re-open during the second wave of COVID-19 in the fall of 2020, which was controversial because incidence in young adults was on the rise. The migration of students back to campuses worried many that transmission within student populations would spread into surrounding communities. In light of this, many colleges and universities implemented mitigation strategies, with varied degrees of success. Washington State University (WSU), located in the city of Pullman in Whitman County, WA, is an example of this type of university-community co-location, where the role of students returning to the area for the fall 2020 semester was contentious. Using COVID-19 incidence reported to Whitman County, we retrospectively study the transmission dynamics that occurred between the student and community subpopulations in fall 2020. We develop a two-population ordinary differential equation mechanistic model to infer transmission rates within and across the university student and community subpopulations. We use results from Bayesian parameter estimation to determine if sustained transmission of COVID-19 occurred in Whitman County and the magnitude of cross-transmission from students to community members. We find these results are consistent with estimation of the time-varying reproductive number and conclude that the students returning to WSU-Pullman did not place the surrounding community at disproportionate risk of COVID-19 during fall 2020 when mitigation efforts were in place.

*Keywords:* Mathematical modeling, Bayesian inference, Structured populations, Infectious disease, COVID-19, Higher education

## 1 Introduction

2 The COVID-19 pandemic dramatically reshaped pedagogy in higher education [1, 2, 3], impacted the mental health and  
3 behavior of university students [4], restructured institutional response and governance within colleges and universities  
4 [1, 3], and forced difficult decisions on students and their families [5]. Looking back, decisions affecting both  
5 public health and education were difficult to balance [6, 7]. University (or college) towns, communities that are  
6 socioeconomically dominated by a college or university, pose unique public health challenges because they house  
7 populations with different demographics and interests that are regulated under common policy. Campus closures and  
8 online learning that potentially reduced transmission of acute respiratory syndrome coronavirus 2 (SARS-CoV-2),  
9 arguably had an adverse affect on many college students [8]. At the same time, universities were thought to have  
10 intensified transmission [9, 10], with high incidence among student populations conceivably putting non-student  
11 community residents at greater risk [11, 12]. During the pandemic, colleges and universities were labeled as hot spots of  
12 virus transmission [13] and the re-opening of college campuses, particularly for the fall 2020 semester, was controversial  
13 [11, 6] with different institutions adopting a wide variety of mitigation and teaching strategies [12, 14]. Even in the  
14 aftermath, the precise role that college-age and university students played transmission amongst the greater community  
15 remains up for debate [see 8].

It is made available under a [CC-BY-NC-ND 4.0 International license](https://creativecommons.org/licenses/by-nc-nd/4.0/).

## Transmission Dynamics in a University Town

16 Locally, college and university student populations were pivotal in the spread of SARS-CoV-2 when campuses re-opened  
17 in the fall of 2020 for two overarching reasons, mobility and social mixing [8]. By August 2020, incidence across the  
18 United States was in decline except for young adults, whose demographic saw an increase in incidence with outbreaks  
19 reported at many colleges and universities [12, 14, 10]. As campuses re-opened for the fall 2020 semester, many  
20 students migrated back to university towns and resumed communal living. Both factors, mobility and social mixing,  
21 contributed to increasing incidence by concentrating imported cases on college campuses with the potential for onward  
22 transmission in residential and social settings directly linked or adjacent to life on campus [11]. Even though increased  
23 incidence put the health of students, faculty and staff, and the surrounding community at greater risk of infection with  
24 SARS-CoV-2, it was not guaranteed that increased incidence in students translated directly to increased transmission  
25 from students to community residents.

26 In anticipation of re-opening campuses in the face of high COVID-19 incidence, most colleges and universities  
27 increased mitigation and testing efforts to offset the potential for increased transmission [12] and were successful. For  
28 example, the University of Illinois at Urbana-Champaign implemented the multi-modal “SHIELD: Target, Test, and  
29 Tell” program along with other non-pharmaceutical interventions in fall 2020 and found these mitigation strategies  
30 reduced transmission, hospitalizations and deaths [15]. Several other studies focusing on transmission between student  
31 and co-located resident populations demonstrated, using either mobility data [e.g., 14] or genomic surveillance data  
32 [e.g., 9, 16, 17], that cross-transmission was highly limited. In contrast, other findings still argue campus outbreaks  
33 translated into peaks of infection within their home communities [e.g., 6]. Thus, it is important to retrospectively study  
34 transmission dynamics of SARS-CoV-2 in university towns to optimize mitigation strategies for the future.

35 Here we use mathematical modeling and Bayesian parameter estimation to study transmission dynamics of SARS-  
36 CoV-2 within a university student population and a co-located resident community population. Specifically, we  
37 study the outbreak of COVID-19 that occurred at Washington State University (WSU) during fall 2020. We develop  
38 a two-population compartmental model to estimate transmission that occurred within the student and community  
39 populations and cross-transmission between populations using COVID-19 incidence reported to Whitman County,  
40 Washington. We also estimate the time-varying reproductive number to make a comparison of a real-time estimation  
41 to our retrospective transmission estimates. With the posterior distributions generated from Bayesian model fitting,  
42 we address two questions motivated by uncertainty around the potential risk university student populations pose to  
43 surrounding communities during epidemics of respiratory disease: (1) Was the COVID-19 outbreak that occurred  
44 during fall 2020 in Whitman County a result of sustained transmission within and across the university student and  
45 community subpopulations? (2) If cross-transmission did occur, what was the magnitude of population mixing?

## 46 **Methods**

### 47 **Study population and COVID-19 case reporting**

48 Whitman County, located in a rural agricultural area of southeastern Washington, is home to WSU and the city of  
49 Pullman. WSU is a large, public research land-grant university, and draws its student body from all over Washington  
50 State and beyond. The city of Pullman is a quintessential university town and the largest city in Whitman County.  
51 Although the Whitman County community residents and WSU student populations overlap geographically, the two  
52 subpopulations do not mix randomly. Students are largely concentrated in housing on or near the WSU campus —  
53 “College Hill”, while community members live in other areas of the city of Pullman or are dispersed throughout  
54 Whitman County.

55 Far from the Seattle area metropolis, Whitman County was less affected than western Washington by the pandemic in  
56 early 2020, but lockdown measures and masking requirements were implemented at both WSU and Pullman city public  
57 spaces and many private businesses as part of statewide actions. All WSU courses were still fully remote in fall 2020  
58 and the campus was officially closed for student housing save for special exemptions, however, many students returned  
59 to the area, living in apartments or Greek housing near the campus. During this time Whitman County experienced a  
60 sharp, dramatic rise in reported COVID-19 cases, primarily among those associated with WSU. Within the first three  
61 weeks of the WSU fall 2020 semester, Whitman County reported an outbreak of COVID-19 within the student and  
62 subsequently the community populations with one of the highest rates reported in Washington State and nationally at the  
63 time [18]. COVID-19 testing was available for both community residents and WSU students throughout the outbreak.  
64 University testing sites, in collaboration with local public health, enabled all returning students, faculty, and staff to  
65 receive free testing before and after the beginning of the semester. While some negative test requirements were in place,  
66 many of these relied on self-attestation and arrival testing was not mandated for students. For Whitman County citizens,  
67 testing was available throughout the city for residents at clinics, pharmacies, and non-permanent testing sites. Positive  
68 COVID-19 cases were reported to Whitman County public health. The epidemic weekly time series data we present  
69 here begins on August 17, 2020, the week before the first day of the WSU fall semester, and reports until December 27,

Transmission Dynamics in a University Town

70 2020 (the time series is congruent with weeks 34-52). Case reports for each week include the totals for the student and  
71 community subpopulations.

72 **Mathematical model and  $\mathcal{R}_0$**

73 To study the transmission dynamics that occurred in Whitman County during the COVID-19 outbreak of fall 2020, we  
74 developed a metapopulation model with explicit intra- and inter-community interactions. Specifically, we used a two-  
75 population Susceptible-Exposed-Infected-Recovered (SEIR) ordinary differential equations (ODE) model framework  
76 with transmission occurring within the university student,  $u$ , and Whitman County community,  $c$ , subpopulations and  
77 cross-transmission between these two subpopulations. We assumed the latency rate ( $\sigma$ ) and recovery rate ( $\gamma$ ) were  
78 equivalent in both populations, and cross-transmission ( $\beta_m$ ) from university students to community member was equal  
79 to transmission from community members to university students. We also assumed that population sizes,  $N$ , remained  
80 constant throughout the duration of the 2020 fall semester, with no substantial loss to death or migration once the  
81 students arrived back on campus. Figure (1) is a diagram of the mechanistic model, definitions of model parameters and  
82 their symbols are given in Table 1, and the ODE's specifying the model are given in Appendix A.1 of the Supplement.

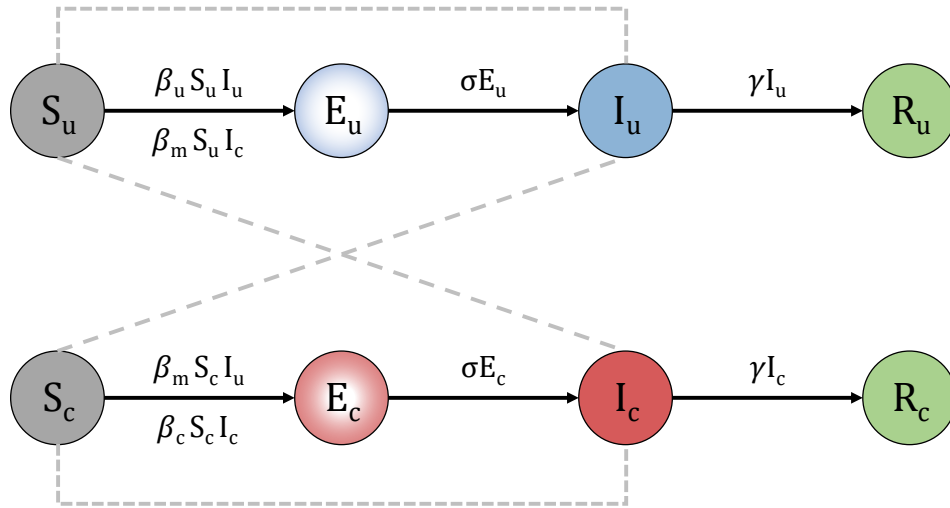


Figure 1: Diagram of the two-population Susceptible-Exposed-Infected-Recovered (SEIR) model. The subscript  $u$  specifies the university student population and the subscript  $c$  specifies the Whitman County community population. Parameters represented include the within subpopulation transmission rates,  $\beta_u$  and  $\beta_c$ , the cross-transmission rate,  $\beta_m$ , the latency rate,  $\sigma$ , and the recovery rate  $\gamma$ .

83 The basic reproductive number,  $\mathcal{R}_0$ , is a key epidemic parameter that quantifies the transmissibility of a pathogen in  
84 a completely susceptible population. We use  $\mathcal{R}_0$  here to determine the potential for sustained transmission in each  
85 subpopulation and the total population. We quantify the reproductive numbers for each subpopulation,  $\mathcal{R}_{0_u}$  or  $\mathcal{R}_{0_c}$ ,  
86 considering only local transmission such that  $\mathcal{R}_{0_{u,c}} = N_{u,c} \beta_{u,c} \gamma^{-1}$ , where  $N$  is the total subpopulation size, and  
87 therefore initial size of susceptibles, in either  $u$  or  $c$ . We derived  $\mathcal{R}_{0_{total}}$  using the next-generation matrix (NGM)  
88 following [19] from our two-population SEIR model. Details of the derivation are given in Appendix A.2 of the  
89 Supplement. The resulting equation is

$$\mathcal{R}_{0_{total}} = \frac{N_u \beta_u + N_c \beta_c + \sqrt{(N_u \beta_u - N_c \beta_c)^2 + 4 N_u N_c \beta_m^2}}{2\gamma}. \quad (1)$$

90  $\mathcal{R}_t$  Estimation with EpiEstim

91 Very similar to  $\mathcal{R}_0$ , the time-varying reproductive number,  $\mathcal{R}_t$ , is the average number of secondary infections generated  
 92 by a single individual over the infectious period at time  $t$  [20]. Monitoring the reproductive number as an outbreak  
 93 progresses can provide instantaneous feedback to public health officials on the effectiveness of control measures [20].  
 94 The EpiEstim framework developed by Cori et al. [20] is a popular method to estimate  $\mathcal{R}_t$  from case data and is  
 95 freely available as an R package [21, 22]. EpiEstim is simple to implement, requiring only incidence time series  
 96 and a generation (or serial) interval distribution. In addition to daily incidence data, EpiEstim can utilize temporally  
 97 aggregated data even when the time window of incidence reporting is longer than the mean generation interval (e.g.,  
 98 when incidence is reported over weekly intervals or aggregated to reduce administrative noise, such as the effects of the  
 99 weekends) [23]. Even when incidence data is temporally aggregated, the resulting  $\mathcal{R}_t$  estimates are made daily. Here we  
 100 use EpiEstim to estimate  $\mathcal{R}_t$  directly from the Whitman County weekly aggregated case reports for the total population  
 101 and for each subpopulation. We use the generation interval distribution derived directly from our two-population ODE  
 102 model (see Appendix A.3 of the Supplement) with the values for  $\sigma$  and  $\gamma$  from Table 1. These data-driven estimates  
 103 provide a useful comparison to our model-based estimates of  $\mathcal{R}_0$  to understand if sustained transmission occurred in  
 104 Whitman County during fall 2020.

105 Statistical model and Bayesian inference

106 To understand the COVID-19 transmission dynamics in Whitman County, we used Bayesian approaches to estimate the  
 107 three transmission parameters,  $\beta_u$ ,  $\beta_c$ , and  $\beta_m$  from our two-population model. We implemented the simulation-based  
 108 estimation methods available in the pomp library in R [24, 22] to generate maximum *a posteriori* (MAP) estimates and  
 109 95% highest posterior density interval (HPD) intervals. The pomp framework required that we also specify a statistical  
 110 distribution to model the sampling process that generated the case reporting data in addition to our two-population  
 111 model. For this we used a negative binomial model, which includes two additional parameters,  $\rho$ , the positive testing  
 112 rate, and  $k$ , the overdispersion parameter (see Appendix B.1 of the Supplement for details on the negative binomial  
 113 likelihood function). We fixed  $\rho$  using the ascertainment rate estimated for Washington State during the first two  
 114 weeks of September 2020 from [25] (Table 1), but estimated  $k$ . Initializing the simulation-based methods also required  
 115 specifying values for  $S$ ,  $E$ ,  $I$ , and  $R$  for the university student and community populations at time zero. To approximate  
 116 the initial values  $E_{u_0}$ ,  $E_{c_0}$ ,  $I_{u_0}$ , and  $I_{c_0}$  we divided the number of reported COVID-19 cases from week 34 (the week  
 117 before classes began in fall 2020 and when students usually arrive back in Whitman County) by  $\rho$ . To approximate the  
 118 initial values for  $R_{u_0}$  and  $R_{c_0}$  we multiplied the the subpopulation sizes ( $N_u$ ,  $N_c$ ) by the estimated number of total  
 119 COVID-19 cases as of September 3, 2020 in Washington State from [25] (Table 1).

Table 1: Model symbols for subscripts, variables, parameters and their definitions. Values are given for initial starting conditions for each variable or for fixed parameter values with references. All rates are in weeks unless specified otherwise.

Symbol	Definition	Initial or Fixed Value	Reference
$u, c$	University student or Community member	NA	
$\beta_u$	Transmission rate between university students	Estimated	
$\beta_c$	Transmission rate between community members	Estimated	
$\beta_m$	Cross-transmission rate between subpopulations	Estimated	
$\sigma$	Latency rate	7/3.59	[26]
$\gamma$	Rate of recovery from infection	7/3.56	[26]
$\rho$	Positive testing (ascertainment) rate	0.76	[25]
$k$	Overdispersion parameter	Estimated	
$N_u, N_c$	Subpopulation sizes	14,254, 20,785	
$S_{u_0}, S_{c_0}$	Initial number of susceptibles	$N_{u,c} - E_{u_0,c_0} - I_{u_0,c_0} - R_{u_0,c_0}$	
$E_{u_0}, E_{c_0}$	Initial number of exposed	Case Reports $_{u_0,c_0} \times \rho^{-1}$	[25]
$I_{u_0}, I_{c_0}$	Initial number of infected	Case Reports $_{u_0,c_0} \times \rho^{-1}$	[25]
$R_{u_0}, R_{c_0}$	Initial number of recovered	$N_{u,c} \times 0.041$	[25]

120 Results

121 We begin our analyses of the Whitman County fall 2020 COVID-19 outbreak by focusing on the observed case reports.  
 122 Figure (2) shows the weekly cases reported to Whitman County beginning on week 34 of the calendar year (the week  
 123 before classes commenced at WSU) for the total population and for each subpopulation. Figure (2) also shows the  $\mathcal{R}_t$   
 124 estimates from EpiEstim for the total population and each subpopulation.  $\mathcal{R}_t$  estimated for the total population begins

It is made available under a [CC-BY-NC-ND 4.0 International license](https://creativecommons.org/licenses/by-nc-nd/4.0/).

### Transmission Dynamics in a University Town

125 just over 3, falls to 1 by week 252 (week 37), and then hovers near 1 throughout the duration of the fall semester. The  
 126 subpopulations demonstrate more fluctuations, however,  $\mathcal{R}_t$  estimated for the university student population is similar to  
 127 the total population.  $\mathcal{R}_t$  estimated for the WSU students also begins near 3, falls below 1 by day 252 (week 37), and  
 128 remains near or below one until the end of the semester with a spike to near 3 on day 327 (week 47, the week before  
 129 Thanksgiving break).  $\mathcal{R}_t$  estimated for the community subpopulation does not begin until day 279 (week 41) because  
 130 the observed case counts are below 11 reports per week and estimates from EpiEstim are unreliable when cases drop  
 131 below 11 [20].  $\mathcal{R}_t$  estimated for the community subpopulation begins just above 4 and falls to one by day 297 (week  
 132 43). Then, a spike similar to the WSU estimates occurs in the community with a peak on day 320 (the last day of  
 133 week 46), and then returns to near 1 for the remainder of the semester.

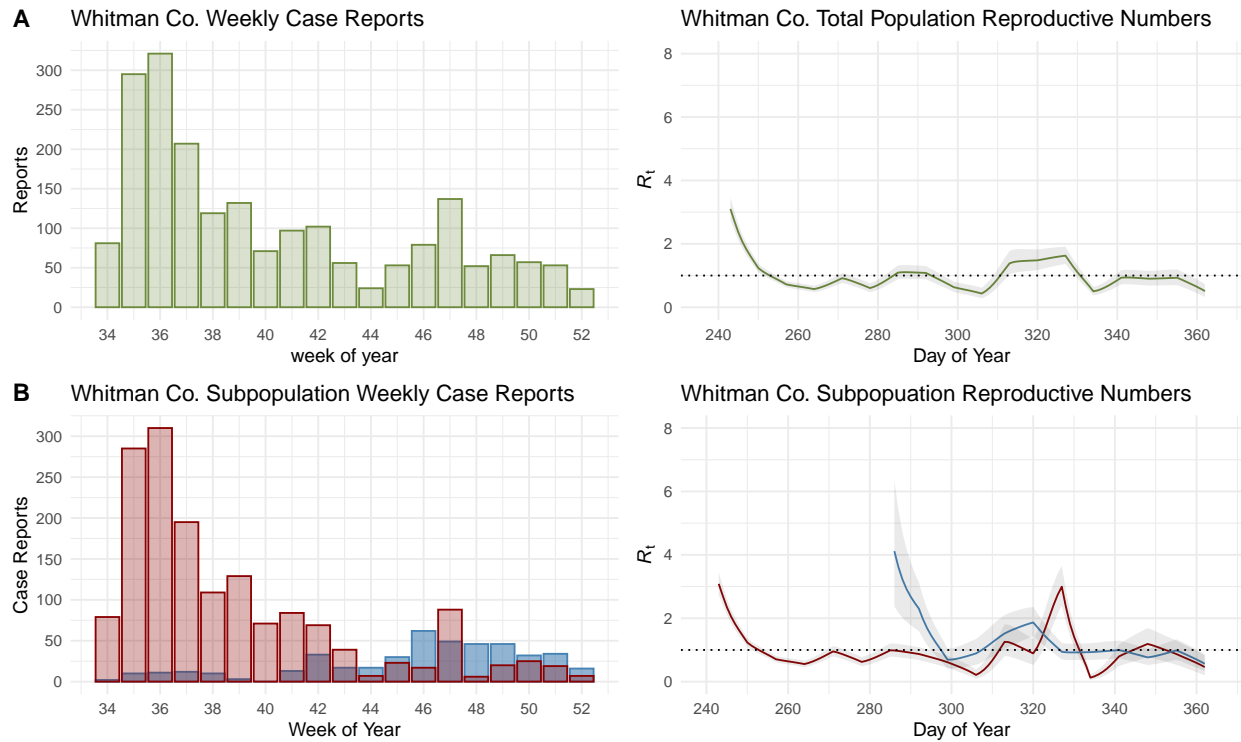


Figure 2: Whitman Co. fall 2020 COVID-19 weekly case reports and  $\mathcal{R}_t$  daily estimates from the total population shown in the top row (panel A) and the university student (red) and Whitman Co. community (blue) subpopulations shown in the bottom row (panel B). Horizontal dotted lines cross the y-axis at 1 for  $\mathcal{R}_t$  daily estimates.

134 Next, using Bayesian inference to estimate the three transmission parameters  $(\beta_u, \beta_c, \beta_m)$  and  $\mathcal{R}_0$  in the total population  
 135 and both subpopulations, we investigate if sustained transmission occurred within each subpopulation and quantify the  
 136 magnitude of cross-transmission across subpopulations. Transmission was significantly greater in the university student  
 137 population than in the community (Figure 3), as the 95% HPD intervals are not overlapping (Table 2). Cross-transmission  
 138 was much less than local transmission within either subpopulation, but was significantly greater than zero (Table 2).  
 139 All 95% HPD intervals for local and total population  $\mathcal{R}_0$ 's overlap, however, the posterior distribution for  $\mathcal{R}_{0_u}$  does  
 140 include the critical threshold of one. Nevertheless, since all  $\mathcal{R}_0$ 's are near or below one, sustained transmission of  
 141 COVID-19 was likely very weak during fall 2020 in Whitman County. The overdispersion parameter  $k$  was unknown  
 142 and therefore estimated, but it not the focus of this study. Values for this parameter are reported in Table (2) and the  
 143 posterior distribution is shown in Appendix B.2 in the Supplement.

It is made available under a [CC-BY-NC-ND 4.0 International license](https://creativecommons.org/licenses/by-nc-nd/4.0/).

### Transmission Dynamics in a University Town

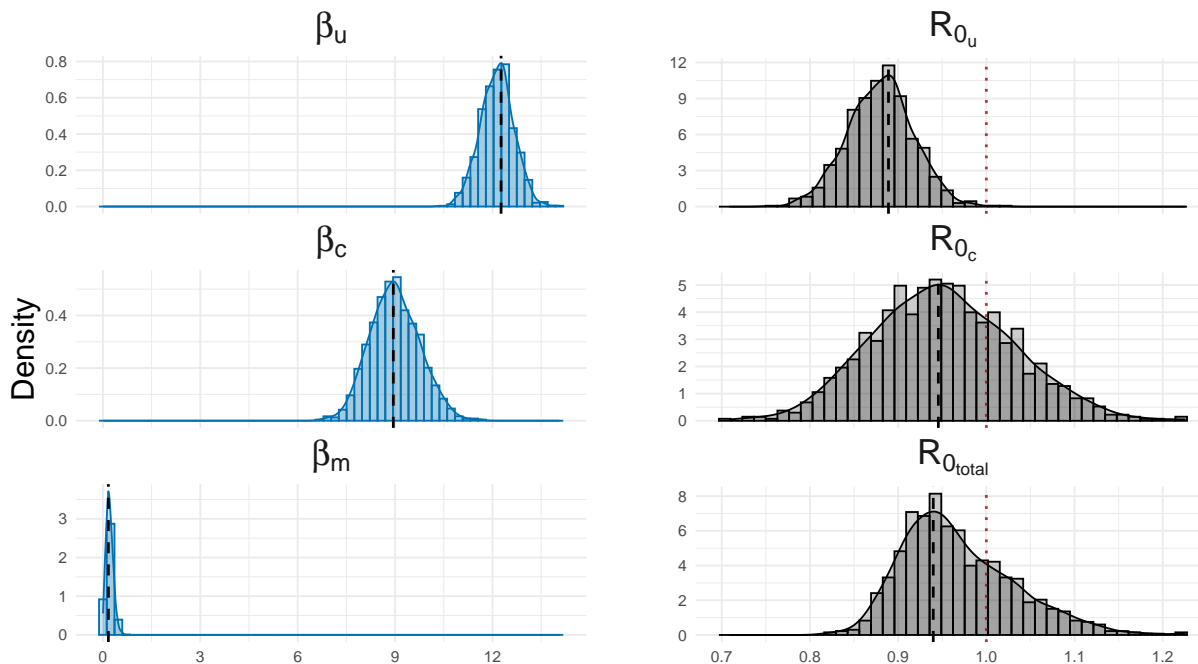


Figure 3: Posterior densities for each transmission parameter and  $\mathcal{R}_0$  for the university student and community subpopulations and the total population. Vertical black dashed lines represent the maximum a posteriori (MAP) estimate. Vertical red dotted lines delineate the critical threshold where  $\mathcal{R}_0 = 1$ .

Table 2: Results from Bayesian estimation with `pomp` for each estimated parameter from Table 1 and  $\mathcal{R}_0$ . Maximum a posteriori (MAP) estimates are modes of the marginal posterior distributions with 95% highest posterior density (HPD) credible intervals.

Parameter	MAP estimate	95% HPD intervals
$\beta_u$	$1.23 \times 10^{-4}$	$[1.12 \times 10^{-4}, 1.32 \times 10^{-4}]$
$\beta_c$	$8.95 \times 10^{-5}$	$[7.59 \times 10^{-5}, 1.05 \times 10^{-4}]$
$\beta_m$	$1.69 \times 10^{-6}$	$[0.00, 4.00 \times 10^{-6}]$
$k$	2.43	[1.29, 4.51]
$\mathcal{R}_{0_u}$	0.90	[0.81, 0.95]
$\mathcal{R}_{0_c}$	0.95	[0.80, 1.11]
$\mathcal{R}_{0_{total}}$	0.94	[0.86, 1.10]

## 144 Discussion

145 Our retrospective analyses investigated the transmission dynamics of SARS-CoV-2 that occurred between WSU  
 146 students and the surrounding community during fall 2020. A major strength of our analyses stems from the of pairing  
 147 COVID-19 incidence data with a mechanistic model. This approach allowed for direct estimation of transmission  
 148 and cross-transmission rates within and across the university student and community subpopulations, and for the  
 149 estimation of  $\mathcal{R}_0$  for the university student, community and total populations. We find that sustained global or local  
 150 transmission of SARS-CoV-2 infection did not occur in Whitman County in fall 2020 even in the face of student  
 151 movement back to the WSU-Pullman campus. The magnitude of cross-transmission between the university student and  
 152 community subpopulations was small and not significantly different from zero. Our results demonstrate support for non-  
 153 pharmaceutical interventions and social distancing policies effectively reducing transmission of SARS-CoV-2 within  
 154 each subpopulation, and the inherent non-random mixing between university students and surrounding communities  
 155 further reducing transmission between the geographically co-located subpopulations.



It is made available under a [CC-BY-NC-ND 4.0 International license](https://creativecommons.org/licenses/by-nc-nd/4.0/) .

## Transmission Dynamics in a University Town

156 In late August 2020, many university students returned to the WSU campus in Pullman, Washington even though course  
157 delivery was completely remote. Arrival testing was not mandatory for returning students and therefore identifying  
158 imported cases was not possible. However, importation of COVID-19 cases likely occurred with student immigration  
159 back to Whitman County. Student COVID-19 incidence peaked in the second week of the fall semester and then  
160 immediately began falling. This is in contrast, for example, to the outbreak at an Arkansas university reported in  
161 [10], which demonstrated rising cases after classes started on August 24, 2020 and not falling until early September  
162 after an Arkansas department of health testing event. Similarly at the University of Michigan–Ann Arbor, COVID-19  
163 incidence increased throughout the fall 2020 semester and peaked in mid-November [16]. Even though the COVID-19  
164 epidemic at the University of Michigan–Ann Arbor was a result of sustained transmission among the student population,  
165 Valesano et al. [16] concluded that the outbreak was derived from multiple imported cases with very little spread into  
166 the community. Transmission dynamics at WSU during fall 2020 had noticeably different characteristics compared to  
167 these other universities that experienced outbreaks with onward transmission. Some transmission did occur at WSU  
168 occur, which was detected in the  $\mathcal{R}_t$  estimates. However,  $\mathcal{R}_{0_u}$  was estimated to be significantly less than 1, and  $\mathcal{R}_t$   
169 estimates for the WSU students dropped to 1 quickly and remained near 1 for the duration of the fall semester. However,  
170 like other universities, importation could have still been in effect and transmission from WSU students to community  
171 members was minimal.

172 Even with the return of WSU students and increased COVID-19 incidence, the Whitman County community did not  
173 experience a measurable heightened risk of COVID-19 in fall 2020. Our results demonstrate limited cross-transmission  
174 between university students and the surrounding community. There was a distinctive delay in the progression of  
175 COVID-19 cases in the community after the beginning of the fall 2020 semester with the peak in student incidence  
176 occurring asynchronously with peak incidence in the community. Case numbers in the community did not begin to rise  
177 until late-October and early-November with  $\mathcal{R}_t$  estimation not being possible until week 41. Overall, transmission  
178 within the community subpopulation was minimal, with  $\mathcal{R}_{0_c}$  near 1, and the interaction with the university student  
179 supopulation did not increase  $\mathcal{R}_{0_{total}}$  to be statistically greater than 1, which is consistent with the  $\mathcal{R}_t$  from the total  
180 population.

181 Although our simulation-based approach allowed us to robustly estimate key epidemiological parameters, we did not  
182 model other important aspects of university-community metapopulations affecting transmission dynamics. For example,  
183 changes in human mobility can change disease prevalence and lead to changes in behavioral patterns and contact  
184 rates [7]. Arrival testing was not mandated for WSU students returning to Whitman County and therefore the case  
185 importation rate was unknown. Knowing imported cases would have allowed for a more refined estimation of the  
186 time-varying reproductive number, which is very sensitive to imported cases and could have accounted for the slight  
187 differences between the  $\mathcal{R}_t$  estimates and our Bayesian analyses. In addition, mobility patterns of community members  
188 in and out of Whitman County were also not documented. Because this information was limited, we did not include  
189 migration in our mechanistic model. Instead, we began our analyses the week before the fall semester commenced when  
190 most students arrive and we could assume that the influx of students had reached an equilibrium. We also assumed  
191 movement in and out of the community population was minimal and at equilibrium. Another potential limitation of our  
192 approach was the inability to estimate all parameters in our model from the available Whitman County data. In addition  
193 to the transmission parameters that were estimated, our model also included parameters such as latency, recovery and  
194 positive testing rates and initial starting values. We did not estimate these parameters, but instead used values that were  
195 estimated independently from other studies. As such these parameters were estimated from data collected outside of  
196 Whitman County which could lead to bias in our results if Whitman County disease dynamics were largely dissimilar  
197 to other populations in Washington State and the U.S during the pandemic. Even though our mechanistic model may  
198 oversimplify reality and relies on results from data outside Whitman County, we balanced model tractability and  
199 parameter identifiability with reasonable assumptions to estimate parameters and draw conclusions about transmission  
200 dynamics in a university town during fall 2020 of the COVID-19 pandemic.

201 Opinions converged during the second wave of COVID-19 in fall 2020 that the re-opening of many colleges and  
202 universities, which concentrated young adults in university towns, were to blame for high COVID-19 incidence [e.g.,  
203 13]. Outbreaks among university student and public concern even led to some institutions returning to online learning  
204 [11]. Retrospectively, our analyses support the hypothesis that systematic interventions, such as social distancing and  
205 masking, were highly effective in limiting SARS-CoV-2 transmission within and out-of university student populations  
206 even in the presence of heightened student mobility. Despite high, and occasionally headline-making case counts,  
207 our study suggests that the large peak in student cases was a pseudo-epidemic brought on by students returning to a  
208 single municipality with widespread access to testing, rather than widespread student-to-student transmission. In real  
209 time, this would be impossible to distinguish absent of arrival testing. This, in turn, suggests that arrival testing should  
210 be considered a key component of understanding the epidemiology of students returning to campus. Further, other  
211 universities and colleges may wish to revisit their "lessons learned" regarding their pandemic control policies, if sheer  
212 numbers of cases were the basis by which those policies were evaluated. Health policy makers faced, and will continue

213 to face, the dilemma of balancing public health with other competing interest such a the economy [7] and education  
214 [4] with finite resources. We can now understand that keeping institutions of higher education open with mitigation  
215 strategies in place will not put co-located communities at excessive risk of COVID-19. This information will help us  
216 manage public health regulations for higher education in future pandemics of respiratory disease.

## 217 **Conflict of Interest**

218 We declare we have no conflicts of interest to disclose.

## 219 **Data Availability**

220 All data, Mathematica Notebook and R code can be found at <https://github.com/erinlancey/Trans-Dynam-Whit-Co>.

## 221 **Acknowledgments**

222 ETL, MSM and EC were funded by contracts 75D30121P10551, 75D30120P07911 and 75D30122C15691 from the  
223 Centers for Disease Control and Prevention, as well as RAPID 2110109 from the National Science Foundation. ETL  
224 was also supported on R35GM147013 from the National Institutes of Health.

## 225 **References**

- 226 [1] Ka Ho Mok. Impact of COVID-19 on Higher Education: Critical Reflections. *Higher Education Policy*,  
227 35(3):563–567, 2022.
- 228 [2] Lorenz S Neuwirth, Svetlana Jović, and B Runi Mukherji. Reimagining higher education during and post-COVID-  
229 19: Challenges and opportunities. *Journal of Adult and Continuing Education*, 27(2):141–156, November 2021.  
230 Publisher: SAGE Publications.
- 231 [3] Carolyn Coyne, Jimmy D. Ballard, and Ira J. Blader. Recommendations for future university pandemic responses:  
232 What the first COVID-19 shutdown taught us. *PLOS Biology*, 18(8):e3000889, August 2020. Publisher: Public  
233 Library of Science.
- 234 [4] Matthew H. E. M. Browning, Lincoln R. Larson, Iryna Sharaievska, Alessandro Rigolon, Olivia McAnirlin,  
235 Lauren Mullenbach, Scott Cloutier, Tue M. Vu, Jennifer Thomsen, Nathan Reigner, Elizabeth Covelli Metcalf,  
236 Ashley D’Antonio, Marco Helbich, Gregory N. Bratman, and Hector Olvera Alvarez. Psychological impacts  
237 from COVID-19 among university students: Risk factors across seven states in the United States. *PLOS ONE*,  
238 16(1):e0245327, January 2021. Publisher: Public Library of Science.
- 239 [5] Qiyue Cai, Samantha LeBouef, Marjorie Savage, and Jodi Dworkin. What Happened When COVID-19 Shut Down  
240 In-Person Higher Education? Parents Speak Out. *About Campus: Enriching the Student Learning Experience*,  
241 26(6):26–34, January 2022.
- 242 [6] Hannah Lu, Courtney Weintz, Joseph Pace, Dhiraj Indana, Kevin Linka, and Ellen Kuhl. Are college campuses  
243 superspreaders? A data-driven modeling study. *Computer Methods in Biomechanics and Biomedical Engineering*,  
244 24(10):1136–1145, July 2021.
- 245 [7] Martijn Gösgens, Teun Hendriks, Marko Boon, Wim Steenbakkers, Hans Heesterbeek, Remco van der Hofstad,  
246 and Nelly Litvak. Trade-offs between mobility restrictions and transmission of SARS-CoV-2. *Journal of the*  
247 *Royal Society Interface*, 18(175):20200936.
- 248 [8] Martin S. Andersen, Ana I. Bento, Anirban Basu, Christopher R. Marsicano, and Kosali I. Simon. College  
249 openings in the United States increase mobility and COVID-19 incidence. *PLOS ONE*, 17(8):e0272820, August  
250 2022. Publisher: Public Library of Science.
- 251 [9] Dinesh Aggarwal, Ben Warne, Aminu S. Jahun, William L. Hamilton, Thomas Fieldman, Louis Du Plessis, Verity  
252 Hill, Beth Blane, Emmeline Watkins, and Elizabeth Wright. Genomic epidemiology of SARS-CoV-2 in a UK  
253 university identifies dynamics of transmission. *Nature communications*, 13(1):1–16, 2022. Publisher: Nature  
254 Publishing Group.
- 255 [10] Kristyn E. Vang. Participation in Fraternity and Sorority Activities and the Spread of COVID-19 Among  
256 Residential University Communities — Arkansas, August 21–September 5, 2020. *MMWR. Morbidity and*  
257 *Mortality Weekly Report*, 70, 2021.



Transmission Dynamics in a University Town

- 258 [11] Henry T. Walke, Margaret A. Honein, and Robert R. Redfield. Preventing and Responding to COVID-19 on  
259 College Campuses. *JAMA*, 324(17):1727–1728, November 2020.
- 260 [12] Andrew J. Leidner. Opening of large institutions of higher education and county-level COVID-19 inci-  
261 dence—United States, July 6–September 17, 2020. *MMWR. Morbidity and mortality weekly report*, 70, 2021.
- 262 [13] Shawn Hubler and Anemona Hartocollis. How Colleges Became the New Covid Hot Spots. *The New York Times*,  
263 September 2020.
- 264 [14] Nita Bharti, Brian Lambert, Cara Exten, Christina Faust, Matthew Ferrari, and Anthony Robinson. Large university  
265 with high COVID-19 incidence is not associated with excess cases in non-student population. *Scientific Reports*,  
266 12(1):3313, February 2022. Publisher: Nature Publishing Group.
- 267 [15] Diana Rose E. Ranoa, Robin L. Holland, Fadi G. Alnaji, Kelsie J. Green, Leyi Wang, Richard L. Fredrickson,  
268 Tong Wang, George N. Wong, Johnny Uelmen, Sergei Maslov, Zachary J. Weiner, Alexei V. Tkachenko, Han-  
269 tao Zhang, Zhiru Liu, Ahmed Ibrahim, Sanjay J. Patel, John M. Paul, Nickolas P. Vance, Joseph G. Gulick,  
270 Sandeep Puthanveetil Satheesan, Isaac J. Galvan, Andrew Miller, Joseph Grohens, Todd J. Nelson, Mary P.  
271 Stevens, P. Mark Hennessy, Robert C. Parker, Edward Santos, Charles Brackett, Julie D. Steinman, Melvin R.  
272 Fenner, Kirstin Dohrer, Michael DeLorenzo, Laura Wilhelm-Barr, Brian R. Brauer, Catherine Best-Popescu,  
273 Gary Durack, Nathan Wetter, David M. Kranz, Jessica Breitbarth, Charlie Simpson, Julie A. Pryde, Robin N.  
274 Kaler, Chris Harris, Allison C. Vance, Jodi L. Silotto, Mark Johnson, Enrique Andres Valera, Patricia K. Anton,  
275 Lowa Mwilambwe, Stephen P. Bryan, Deborah S. Stone, Danita B. Young, Wanda E. Ward, John Lantz, John A.  
276 Vozenilek, Rashid Bashir, Jeffrey S. Moore, Mayank Garg, Julian C. Cooper, Gillian Snyder, Michelle H. Lore,  
277 Dustin L. Yocum, Neal J. Cohen, Jan E. Novakofski, Melanie J. Loots, Randy L. Ballard, Mark Band, Kayla M.  
278 Banks, Joseph D. Barnes, Iuliana Bentea, Jessica Black, Jeremy Busch, Abigail Conte, Madison Conte, Michael  
279 Curry, Jennifer Eardley, April Edwards, Therese Eggett, Judes Fleurimont, Delaney Foster, Bruce W. Fouke,  
280 Nicholas Gallagher, Nicole Gastala, Scott A. Genung, Declan Glueck, Brittani Gray, Andrew Greta, Robert M.  
281 Healy, Ashley Hetrick, Arianna A. Holterman, Nahed Ismail, Ian Jasenof, Patrick Kelly, Aaron Kielbasa, Teresa  
282 Kiesel, Lorenzo M. Kindle, Rhonda L. Lipking, Yukari C. Manabe, Jade Mayes, Reubin McGuffin, Kenton G.  
283 McHenry, Agha Mirza, Jada Moseley, Heba H. Mostafa, Melody Mumford, Kathleen Munoz, Arika D. Murray,  
284 Moira Nolan, Nil A. Parikh, Andrew Pekosz, Janna Pflugmacher, Janise M. Phillips, Collin Pitts, Mark C. Potter,  
285 James Quisenberry, Janelle Rear, Matthew L. Robinson, Edith Rosillo, Leslie N. Rye, MaryEllen Sherwood,  
286 Anna Simon, Jamie M. Singson, Carly Skadden, Tina H. Skelton, Charlie Smith, Mary Stech, Ryan Thomas,  
287 Matthew A. Tomaszewski, Erika A. Tyburski, Scott Vanwingerden, Evette Vlach, Ronald S. Watkins, Karriem  
288 Watson, Karen C. White, Timothy L. Killeen, Robert J. Jones, Andreas C. Cangellaris, Susan A. Martinis, Awais  
289 Vaid, Christopher B. Brooke, Joseph T. Walsh, Ahmed Elbanna, William C. Sullivan, Rebecca L. Smith, Nigel  
290 Goldenfeld, Timothy M. Fan, Paul J. Hergenrother, and Martin D. Burke. Mitigation of SARS-CoV-2 transmission  
291 at a large public university. *Nature Communications*, 13(1):3207, June 2022. Publisher: Nature Publishing Group.
- 292 [16] Andrew L. Valesano, William J. Fitzsimmons, Christopher N. Blair, Robert J. Woods, Julie Gilbert, Dawn Rudnik,  
293 Lindsey Mortenson, Thomas C. Friedrich, David H. O’Connor, and Duncan R. MacCannell. SARS-CoV-2  
294 genomic surveillance reveals little spread from a large university campus to the surrounding community. In *Open*  
295 *Forum Infectious Diseases*, volume 8, page ofab518. Oxford University Press US, 2021. Issue: 11.
- 296 [17] Jacquelyn Turcinovic, Kayla Kuhfeldt, Madison Sullivan, Lena Landaverde, Judy T. Platt, Yuriy O. Alekseyev,  
297 Lynn Doucette-Stamm, Davidson H. Hamer, Catherine Klapperich, and Hannah E. Landsberg. Transmission Dy-  
298 namics and Rare Clustered Transmission Within an Urban University Population Before Widespread Vaccination.  
299 *The Journal of Infectious Diseases*, 229(2):485–492, 2024. Publisher: Oxford University Press.
- 300 [18] Ian Painter, Grace Huynh, Juan M Lavista Ferres, Ruth Etzioni, Barbra A Richardson, Niket Thakkar, and Mike  
301 Famulare. SitRep 15: COVID-19 transmission across Washington State. 2020.
- 302 [19] O. Diekmann, J. A. P. Heesterbeek, and M. G. Roberts. The construction of next-generation matrices for  
303 compartmental epidemic models. *Journal of The Royal Society Interface*, 7(47):873–885, June 2010.
- 304 [20] Anne Cori, Neil M. Ferguson, Christophe Fraser, and Simon Cauchemez. A new framework and software to  
305 estimate time-varying reproduction numbers during epidemics. *American journal of epidemiology*, 178(9):1505–  
306 1512, 2013. Publisher: Oxford University Press.
- 307 [21] Anne Cori, Simon Cauchemez, Neil M. Ferguson, Christophe Fraser, Elisabeth Dahlgwist, P. Alex Demarsh,  
308 Thibaut Jombart, Zhian N. Kamvar, Justin Lessler, and Shikun Li. Package ‘EpiEstim’. *CRAN: Vienna Austria*,  
309 13, 2020.
- 310 [22] R Core Team. R: A Language and Environment for Statistical Computing, 2023.
- 311 [23] Rebecca K. Nash, Samir Bhatt, Anne Cori, and Pierre Nouvellet. Estimating the epidemic reproduction num-  
312 ber from temporally aggregated incidence data: A statistical modelling approach and software tool. *PLoS*  
313 *Computational Biology*, 19(8):e1011439, 2023. Publisher: Public Library of Science San Francisco, CA USA.

It is made available under a [CC-BY-NC-ND 4.0 International license](#) .

## Transmission Dynamics in a University Town

- 314 [24] Aaron A. King, Dao Nguyen, and Edward L. Ionides. Statistical Inference for Partially Observed Markov  
315 Processes via the R Package pomp. *Journal of Statistical Software*, 69(12), 2016.
- 316 [25] Jungsik Noh and Gaudenz Danuser. Estimation of the fraction of COVID-19 infected people in U.S. states and  
317 countries worldwide. *PLOS ONE*, 16(2):e0246772, February 2021. Publisher: Public Library of Science.
- 318 [26] Sen Pei, Sasikiran Kandula, and Jeffrey Shaman. Differential effects of intervention timing on COVID-19 spread  
319 in the United States. *Science Advances*, 6(49):eabd6370, December 2020. Publisher: American Association for  
320 the Advancement of Science.