

Joint Association of Polygenic Risk and Social Determinants of Health with Coronary Heart Disease in the United States

Kristjan Norland, M.Sc.,¹ Daniel J. Schaid, Ph.D.,² Mohammadreza Naderian, M.D.,¹ Jie Na, Ph.D.,² Iftikhar J. Kullo, M.D.^{*1,3}

Affiliations:

¹Department of Cardiovascular Medicine, Mayo Clinic, Rochester, MN, USA

²Department of Quantitative Health Sciences, Mayo Clinic, Rochester, MN, USA

³Gonda Vascular Center, Mayo Clinic, Rochester, MN, USA

*Corresponding Author:

Iftikhar J. Kullo, M.D.

Department of Cardiovascular Medicine and the Gonda Vascular Center, Mayo Clinic

200 First Street SW, Rochester, MN 55905

Phone: 507-284-2511

Email: kullo.iftikhar@mayo.edu

Twitter: [@iftikhar_kullo](https://twitter.com/iftikhar_kullo)

Abstract

Background: The joint effects of polygenic risk and social determinants of health (SDOH) on coronary heart disease (CHD) in the United States are unknown.

Methods: In 67,256 All of Us (AoU) participants with available SDOH data, we ascertained self-reported race/ethnicity and calculated a polygenic risk score for CHD (PRS_{CHD}). We used 90 SDOH survey questions to develop an SDOH score for CHD ($SDOH_{CHD}$). We assessed the distribution of $SDOH_{CHD}$ across self-reported races and US states. We tested the joint association of $SDOH_{CHD}$ and PRS_{CHD} with CHD in regression models that included clinical risk factors.

Results: $SDOH_{CHD}$ was highest in self-reported black and Hispanic people. Self-reporting as black was associated with higher odds of CHD but not after adjustment for $SDOH_{CHD}$. Median $SDOH_{CHD}$ values varied by US state and were associated with heart disease mortality. A 1-SD increase in $SDOH_{CHD}$ was associated with CHD (OR=1.36; 95% CI, 1.29 to 1.46) and incident CHD (HR=1.73; 95% CI, 1.27 to 2.35) in models that included PRS_{CHD} and clinical risk factors. Among people in the top 20% of PRS_{CHD} , CHD prevalence was 4.8% and 7.8% in the bottom and top 20% of $SDOH_{CHD}$, respectively.

Conclusions: Increased odds of CHD in self-reported black people are likely due to higher SDOH burden. SDOH and PRS were independently associated with CHD in the US. Our findings emphasize the need to consider both PRS and SDOH for equitable disease risk assessment.

Introduction

Both genetic and environmental factors contribute to susceptibility to common diseases. Additive genetic liability can be estimated with polygenic risk scores (PRS) (1) but our knowledge of how environmental variables add to or modify polygenic risk is rudimentary (2). Social determinants of health (SDOH) are the environmental conditions that influence health outcomes (3). In the United States (US), SDOH contribute to many health disparities, including mortality from cardiovascular disease (4), and are associated with self-reported race (5).

Coronary heart disease (CHD) is the leading cause of mortality in the US (6,7) and has well-known genetic and environmental susceptibility factors (8). It is also preventable; risk factors are identifiable and 10-year risk can be estimated from clinical risk prediction equations (9). These equations include race as an input variable but not PRS or SDOH. The inclusion of race in clinical algorithms is increasingly under scrutiny as it may contribute to systematic racism in medicine (10). Race is a social, not biological, construct, and SDOH are hypothesized to confound the association of self-reported race with disease risk (11,12). Socioeconomically disadvantaged groups are more often exposed to CHD risk factors such as smoking, have increased stress and reduced access to formal education and medical care, and often live and work in poor conditions (13). Although many other complex diseases fulfill similar criteria, CHD is ideal to study how PRS and SDOH jointly affect the risk of common complex diseases.

Incorporating SDOH information into electronic health records (EHRs) is a relatively recent development, highlighting the need for large cohorts with self-reported SDOH data. The All of Us (AoU) Research Program aims to build the most diverse health dataset in the US, allowing for the integration of SDOH, genetic, and EHR data (14). SDOH data in AoU cover the five SDOH domains defined by *Healthy People 2030* (HP-30). These include 1) economic stability, 2) education access and quality, 3) healthcare access and quality, 4) neighborhood and built environment, and 5) social and community context (15–17).

Recent advances in PRS have raised the prospect of clinical implementation (18,19). In a previous study, we described the variable performance of PRS_{CHD} in three major racial/ethnic groups in the US (20). However, it is unclear whether there are additive or interactive effects between PRS and SDOH on CHD. In this study, we developed an SDOH score for CHD (SDOH_{CHD}) in AoU and compared its distribution in different groups of self-reported race and across US states. We tested whether SDOH confound the

association of self-reported race with CHD. Finally, we jointly modeled $SDOH_{CHD}$ and PRS_{CHD} in different models of CHD that included clinical risk factors.

Methods

Study cohort

Of 245,394 whole-genome sequenced people in the AoU Research Program v7, we analyzed 67,256 who had responded to the AoU SDOH survey. We ascertained demographic factors, CHD, conventional risk factors for CHD (hypertension, type 2 diabetes [T2D], body mass index [BMI], smoking status), medication use (statins and antihypertensives), and other atherosclerotic cardiovascular diseases (ASCVD) from EHR data. We defined CHD by diagnosis and procedure codes (complete definitions for CHD and its risk factors are provided in the Supplementary Appendix). We defined CHD as any code in the EHR and incident CHD as the presence of any code ≥ 1 month after responding to the SDOH study. We only considered incident CHD events in participants free of CHD at the time of the SDOH study.

Social determinants of health

We used 81 SDOH questions from the AoU SDOH survey related to loneliness, perceived discrimination, food insecurity, housing instability and quality, perceived stress, daily spiritual experiences, and religious service attendance (Table S1) (16). We included 9 SDOH questions from previous AoU surveys that were not included in the SDOH survey (to avoid duplication of questions) (16). These were related to education and income level, employment and marital status, home ownership and housing instability, and health literacy (Table S1). 81 of the questions were Likert-type or continuous and showed patterns of moderate clustering (Figure S1). We created binary variables out of other questions. In total, we derived 124 variables from the 90 SDOH questions. Further details on the SDOH variables are provided in the Supplementary Appendix.

Whole-genome sequence data and polygenic risk score for CHD

We used the short-read whole-genome sequencing (srWGS) data, specifically the ACAF-thresholded and filtered PLINK files (variants with population-specific allele frequency $< 1\%$ or population-specific allele count < 100). We used genetic principal components (PCs) and genetic ancestry group predictions provided by the AoU team (see Supplementary Appendix). We used a recent polygenic risk score for CHD

(PRS_{CHD}) developed from multi-ancestry GWAS summary statistics for CHD (21). PRS_{CHD} was developed using PRS-CSx (22) with 1.3 million variants. When matching variants, we removed ambiguous SNPs and computed the PRS using *plink2*.

Population descriptors

We assigned participants to major genetic ancestry groups (AFR, AMR, EAS, EUR, MID, and SAS) (23). We used self-reported race and ethnicity from The Basics survey. Due to small group sizes, we binned those who self-reported as multiracial, Middle Eastern and North African (MENA), Native Hawaiian and Pacific Islander (NHPI), or none indicated/prefer not to answer/skip/none of these into a separate category (“other”).

Statistical analyses

We used the All of Us Researcher Workbench, R version 4.2.2.

We split the study cohort into training and test sets (50/50 split). To impute missing survey responses, we used the R package *missRanger*, which combines random forest imputation with predictive mean matching. To avoid leaking test data into the training set, we first imputed the training set and then the test set separately after combining it with the imputed training set (Supplementary Appendix).

To develop the $SDOH_{CHD}$, we fitted a logistic lasso regression model in the training set with CHD as outcome and potential predictor variables age, age², sex, an indicator variable for self-reported ethnicity, 10 genetic PCs, and 124 SDOH variables. We standardized all variables before fitting the model. We tuned the penalty parameter over a grid of 50 levels, using 10-fold cross-validation repeated ten times, minimizing the log loss. To compute $SDOH_{CHD}$, we standardized SDOH variables according to the means and standard deviations in the training set, multiplied them with corresponding model coefficients, and summed them together.

To test whether the association of self-reported race and CHD was confounded by $SDOH_{CHD}$, we fitted four different logistic regression models that included indicator variables for self-reported races and different sets of covariates: i) age and sex, ii) clinical risk factors, iii) clinical risk factors and PRS_{CHD} , and iv) clinical risk factors, PRS_{CHD} and $SDOH_{CHD}$. To test for heterogeneity in the associations of $SDOH_{CHD}/PRS_{CHD}$

with CHD between genetic ancestry groups, we fitted logistic regression models of CHD that included $SDOH_{CHD}/PRS_{CHD}$, indicator variables for genetic ancestry groups, interaction terms for the two, as well as age, sex, and 10 PCs.

We tested for association between median $SDOH_{CHD}$ by US state of residence and heart disease mortality using a spatial simultaneous autoregressive lag model. Since AoU does not have mortality data, we used mortality rates provided by the Centers for Disease Control and Prevention (CDC) (Supplementary Appendix).

To evaluate $SDOH_{CHD}$ and PRS_{CHD} in the test set, we fitted logistic regression models of CHD that included the scores separately and jointly with interaction. We included two types of models; one included age, sex, and 10 genetic PCs as covariates (basic model), and the other additionally included clinical risk factors (clinical risk factor model; hypertension, T2D, BMI, smoking status, and statin and antihypertensive medications). We standardized PRS_{CHD} within genetic ancestry groups. We used Cox regression to test the association between $SDOH_{CHD}$, PRS_{CHD} , and incident CHD. We used age as the time scale and censored participants at their events or on 2022/07/01 (the date of the last observed EHR record), whichever was first. We excluded participants with CHD <1 month after responding to the SDOH survey. We assessed the proportional hazard assumptions for our models (Table S2).

Results

Of 245,394 participants with available whole-genome sequence data in version 7 of the All of Us (AoU) Research Program, 67,256 responded to the SDOH survey between 2021/11/01 and 2022/06/30. 43,791 (65.1%) were female, the mean age was 59 years (SD, 16), and 2,735 (4.1%) had coronary heart disease (CHD, Table 1). 77.8% self-reported as white, 7.9% as black, and 9% as Hispanic.

We randomized the cohort into 50/50 training and test sets ($n=33,628$) to develop and test an SDOH score for CHD ($SDOH_{CHD}$). $SDOH_{CHD}$ was a weighted sum of 52 SDOH variables (Figure 1A); higher $SDOH_{CHD}$ values indicated higher CHD-associated SDOH burden (Figure 1B). The variables with the highest weights were related to religiousness/spirituality, employment status, highest education level, perceived discrimination, social support, neighborhood quality, health literacy, and food insecurity (Figure 1A). In the test set, a 1-SD increase in $SDOH_{CHD}$ was associated with CHD in basic and clinical risk factors models

(OR=1.59; 95% CI, 1.50 to 1.69, and OR=1.35; 95% CI 1.27 to 1.44, respectively). SDOH_{CHD} was also associated with clinical risk factors for CHD and other ASCVD (Figure S2).

In the test set, 26,241 self-reported as white, 2,645 as black, 854 as Asian, and 3,888 as “other”. 61.9% self-reported as Hispanic in the “other” race category, while 1.6-2.6% in the remaining races (Figure 1C). People who self-reported as black or other/Hispanic had the highest SDOH_{CHD} on average (Figure 1D). Self-reporting as black was associated with higher odds of CHD compared to self-reporting as white when adjusting for age and sex (OR=1.70; 95% CI, 1.39 to 2.06) and lower odds of CHD when self-reporting as Asian (OR=0.54; 95% CI, 0.29 to 0.92) (Figure 2A). After adjustment for CHD risk factors and PRS_{CHD}, self-reporting as black remained associated with increased odds of CHD (OR=1.28; 95% CI, 1.04 to 1.57) but not after additional adjustment for SDOH_{CHD} (OR=1.05; 95% CI, 0.85 to 1.29).

We computed median SDOH_{CHD} values by state of residence, which were highest in the Southeast US (SC, TN, MS, AL) and CT (Figure 2B). Median SDOH_{CHD} values were associated with heart disease mortality rates per 100,000 in 2021 as reported by the Centers for Disease Control and Prevention (β =24.8; 95% CI, 7.3 to 42.3) (Figure S3).

We observed high variability in CHD prevalence within quintiles of PRS_{CHD} depending on SDOH_{CHD}, and vice versa (Figure 2C, Figure S4). Among people with high genetic risk (fifth quintile of PRS_{CHD}), 4.8% (95% CI, 3.9% to 5.7%) and 7.8% (95% CI, 6.8% to 8.7%) had CHD among people with high and low SDOH_{CHD} (fifth and first quintiles of SDOH_{CHD}), respectively. CHD prevalence was comparable among people with low genetic risk (first quintile of PRS_{CHD}) but high SDOH_{CHD} and those with high genetic risk but low SDOH_{CHD} (4.1% vs 4.8%).

In the test set, the correlation between PRS_{CHD} and SDOH_{CHD} was weak (r =0.067; 95% CI, 0.057 to 0.078). There was no significant heterogeneity in the association of SDOH_{CHD} with CHD between genetic ancestry groups (Table S3). For PRS_{CHD}, the effect size of PRS_{CHD} was smaller in AFR compared to EUR (P <0.001 for the interaction) (Table S4).

Since the effects of SDOH_{CHD} on CHD were not statistically different between genetic ancestry groups, we estimated the joint effects of SDOH_{CHD} and PRS_{CHD} in the full test set. A 1-SD increase in SDOH_{CHD} and PRS_{CHD} was associated with higher odds of CHD when included jointly in a basic model (OR=1.58; 95% CI,

1.49 to 1.68 and OR=1.50; 95% CI, 1.42 to 1.59, respectively) (Table 2, Figure 3A). The effect estimates of $SDOH_{CHD}$ and PRS_{CHD} were similar when included jointly in a model compared to separately (Table 2). Heterogeneity in PRS between ancestry groups likely explained a weak interaction between the scores ($OR_{int}=0.93$; 95% CI, 0.88 to 0.98). In a clinical risk factor model, a 1-SD increase in $SDOH_{CHD}$ and PRS_{CHD} was associated with slightly attenuated odds of CHD compared to the basic model (OR=1.36; 95% CI, 1.28 to 1.46 and OR=1.37; 95% CI, 1.29 to 1.46, respectively).

Over a median follow-up time of 214 days (IQR, 88) from the time of the SDOH survey, we observed 52 incident CHD events in 32,322 participants (excluding 1,306 with CHD diagnosis before the SDOH survey). A 1-SD increase in $SDOH_{CHD}$ and PRS_{CHD} was associated with comparable increased risk of CHD in a basic model (HR=2.14; 95% CI, 1.61 to 2.84 and HR=1.71; 95% CI, 1.27 to 2.34, respectively) and a clinical risk factor model (HR=1.73; 95% CI, 1.27 to 2.35 and HR=1.57; 95% CI, 1.15 to 2.14, respectively) (Table 2, Figure 3).

Discussion

To address the gap in our knowledge of how environmental factors add to or modify the polygenic risk of CHD, we used data from 67,256 whole-genome sequenced individuals who responded to the SDOH survey in the All of Us (AoU) Research Program. We calculated a multi-ancestry polygenic risk score for CHD (PRS_{CHD}) (21) and created an SDOH score for CHD ($SDOH_{CHD}$). $SDOH_{CHD}$ was highest in self-reported black and Hispanic people, and self-reporting as black was associated with increased odds of CHD but not after adjustment for $SDOH_{CHD}$. Median $SDOH_{CHD}$ values by state were associated with heart disease mortality and were highest in the South. Among people in the top 20% of PRS_{CHD} , we observed 40% lower CHD prevalence in the first quintile of $SDOH_{CHD}$ compared to the fifth quintile of $SDOH_{CHD}$. A 1-SD increase in $SDOH_{CHD}$ and PRS_{CHD} was associated with comparable odds (risk) of (incident) CHD in models that included clinical risk factors.

Self-reporting as black was associated with higher odds of CHD after adjustment for PRS_{CHD} and clinical risk factors but not after additional adjustment for $SDOH_{CHD}$. This is consistent with results from a prior study showing that racial differences in premature all-cause mortality are confounded by SDOH (11). Recently, new race-free prediction equations for 10- and 30-year risk estimates of cardiovascular disease were proposed, taking into account SDOH to more equitably estimate and address risk (24). Our

observational study cannot establish causality but our findings suggest that SDOH confounds the association between race and CHD.

In the test set, a 1-SD increase in both $SDOH_{CHD}$ and PRS_{CHD} was associated with a comparable increase in the odds of CHD when jointly included in models with clinical risk factors. Although we developed $SDOH_{CHD}$ from mostly prevalent CHD, it was also associated with incident CHD events. These results highlight the importance of jointly modeling SDOH and PRS when estimating CHD risk. Our approach extends previous efforts to create SDOH scores for CVD (25,26) and is likely applicable to other common diseases. For example, a recent study showed that T2D prevalence and BMI were influenced by PRS and SDOH in the US and the UK (27). However, since $SDOH_{CHD}$ was specifically developed for CHD, it is different from other commonly used social and economic deprivation indices based on area-level socioeconomic measures.

A strength of our study is a relatively large and diverse cohort representing the US population. The AoU dataset covers all five domains of HP-30 and provides self-reported SDOH measures that cannot be inferred from area-level data. These include SDOH that are known to play a role in CHD, such as employment status and educational attainment, health literacy, and food insecurity (28–31). Our analysis also suggests that other SDOH affect the risk of developing CHD, including perceived discrimination, religiousness/spirituality, perceived stress, neighborhood quality, and social support.

Our study had several limitations. First, the cohort consisted mostly of self-reported white people (78%), which may have influenced the SDOH score. Second, the AoU SDOH survey had patterns in survey nonresponse among people who were non-white and had lower education and income. There was item nonresponse due to racial identity, educational attainment, income level, and age (16). By imputing the missing data, we possibly reduced bias due to item nonresponse. Third, our results need external validations. We are not aware of comparable cohorts with both genetic and extensive SDOH data. Our work highlights the need for systematic collection of SDOH data in other cohorts. Fourth, $SDOH_{CHD}$ is not a typical social deprivation index since the outcome of interest was CHD. Our cross-sectional study precludes causal inferences as some SDOH could result from prevalent disease (“reverse causality”). An ideal SDOH risk score for CHD would be one developed in people without cardiovascular disease at the time of the survey using incident CHD events. Future studies are needed to explore this approach. Although $SDOH_{CHD}$ was associated with incident CHD, the follow-up time was short, and the number of events was modest. Finally, causal variables that were not accounted for may have confounded

associations with SDOH; many variables related to religiousness/spirituality had a positive weight in $SDOH_{CHD}$ but such measures have previously been associated with lower CVD risk, notably among African Americans (32).

Despite the above limitations, our study provides insights into how PRS and SDOH jointly contribute to CHD in the US. The findings could have implications for public health policy and more equitable CHD risk prediction at the individual level. Reducing the SDOH burden with policy changes could decrease heart disease incidence and racial disparities (33). At the individual level, race should be replaced with SDOH in risk prediction equations and joint modeling of PRS and SDOH scores could improve the accuracy of risk estimates.

In conclusion, the burden of SDOH is highest in self-reported black and Hispanic people in the US. Self-reported race was associated with CHD but not after adjustment for $SDOH_{CHD}$. $SDOH_{CHD}$ and PRS_{CHD} were associated with both prevalent and incident CHD after adjustment for clinical risk factors. The effects of PRS and SDOH were additive, implying that joint modeling of the two could improve accuracy and equality in disease risk assessment.

Data availability

How to request access to data in the All of Us Research Program: <https://www.researchallofus.org/>.

Funding

This work was supported by grants from the Polygenic Risk Methods in Diverse Populations (PRIMED) Consortium through the National Human Genome Research Institute (NHGRI): grant U01 HG11710, the electronic Medical Records and Genomics (eMERGE) Network funded by the NHGRI: grant U01 HG06379, and a National Heart, Lung, and Blood: grant K24 HL137010, and GM065450.

Competing Interests

The authors declare no competing interests.

References

1. Kullo IJ, Lewis CM, Inouye M, Martin AR, Ripatti S, Chatterjee N. Polygenic scores in biomedical research. *Nat Rev Genet.* 2022 Sep;23(9):524–32.
2. Lewis CM, Vassos E. Polygenic risk scores: from research tools to clinical instruments. *Genome Med.* 2020 May 18;12(1):44.
3. Braveman P, Gottlieb L. The Social Determinants of Health: It's Time to Consider the Causes of the Causes. *Public Health Rep.* 2014;129(Suppl 2):19–31.
4. Singh GK, Daus GP, Allender M, Ramey CT, Martin EK, Perry C, et al. Social Determinants of Health in the United States: Addressing Major Health Inequality Trends for the Nation, 1935-2016. *Int J MCH AIDS.* 2017;6(2):139–64.
5. Javed Z, Haisum Maqsood M, Yahya T, Amin Z, Acquah I, Valero-Elizondo J, et al. Race, Racism, and Cardiovascular Health: Applying a Social Determinants of Health Framework to Racial/Ethnic Disparities in Cardiovascular Disease. *Circ Cardiovasc Qual Outcomes.* 2022 Jan;15(1):e007917.
6. Nowbar AN, Gitto M, Howard JP, Francis DP, Al-Lamee R. Mortality From Ischemic Heart Disease. *Circ Cardiovasc Qual Outcomes.* 2019 Jun;12(6):e005375.
7. Brown JC, Gerhardt TE, Kwon E. Risk Factors for Coronary Artery Disease. In: *StatPearls [Internet]. Treasure Island (FL): StatPearls Publishing; 2023 [cited 2023 Nov 15]. Available from: <http://www.ncbi.nlm.nih.gov/books/NBK554410/>*
8. Khera AV, Kathiresan S. Genetics of coronary artery disease: discovery, biology and clinical translation. *Nat Rev Genet.* 2017 Jun;18(6):331.
9. Goff DC, Lloyd-Jones DM, Bennett G, Coady S, D'Agostino RB, Gibbons R, et al. 2013 ACC/AHA guideline on the assessment of cardiovascular risk: a report of the American College of Cardiology/American Heart Association Task Force on Practice Guidelines. *Circulation.* 2014 Jun 24;129(25 Suppl 2):S49-73.
10. Vyas DA, Eisenstein LG, Jones DS. Hidden in Plain Sight — Reconsidering the Use of Race Correction in Clinical Algorithms. *N Engl J Med.* 2020 Aug 27;383(9):874–82.
11. Bundy JD, Mills KT, He H, LaVeist TA, Ferdinand KC, Chen J, et al. Social determinants of health and premature death among adults in the USA from 1999 to 2018: a national cohort study. *Lancet Public Health.* 2023 Jun 1;8(6):e422–31.
12. Brandt EJ. Social determinants of racial health inequities. *Lancet Public Health.* 2023 Jun 1;8(6):e396–7.
13. Kretsoulas C, Anand SS. The impact of social determinants on cardiovascular disease. *Can J Cardiol.* 2010;26(Suppl C):8C-13C.
14. The “All of Us” Research Program. *N Engl J Med.* 2019 Aug 15;381(7):668–76.
15. Social Determinants of Health - Healthy People 2030 | health.gov [Internet]. [cited 2023 Oct 18]. Available from: <https://health.gov/healthypeople/priority-areas/social-determinants-health>
16. Tesfaye S, Cronin R, Lopez-Class M, Chen Q, Foster CS, Gu C, et al. Measuring Social Determinants of Health in the All of Us Research Program: Technical Document [Internet]. *medRxiv; 2023 [cited 2023 Oct 6]. p. 2023.06.01.23290404. Available from: <https://www.medrxiv.org/content/10.1101/2023.06.01.23290404v1>*
17. Bhavnani SK, Zhang W, Bao D, Raji M, Ajewole V, Hunter R, et al. Subtyping Social Determinants of Health in All of Us: Network Analysis and Visualization Approach. *medRxiv.* 2023 Aug 11;2023.01.27.23285125.
18. Kullo IJ, Jouni H, Austin EE, Brown SA, Krusselbrink TM, Isseh IN, et al. Incorporating a Genetic Risk Score Into Coronary Heart Disease Risk Estimates: Effect on Low-Density Lipoprotein Cholesterol Levels (the MI-GENES Clinical Trial). *Circulation.* 2016 Mar 22;133(12):1181–8.

19. Hao L, Kraft P, Berriz GF, Hynes ED, Koch C, Korategere V, Kumar P, et al. Development of a clinical polygenic risk score assay and reporting workflow. *Nat Med*. 2022 May;28(5):1006–13.
20. Dikilitas O, Schaid DJ, Kosel ML, Carroll RJ, Chute CG, Denny JA, et al. Predictive Utility of Polygenic Risk Scores for Coronary Heart Disease in Three Major Racial and Ethnic Groups. *Am J Hum Genet*. 2020 May 7;106(5):707–16.
21. Smith JL, Tcheandjieu C, Dikilitas O, Iyer K, Miyazawa K, Hilliard A, et al. A Multi-Ancestry Polygenic Risk Score for Coronary Heart Disease Based on an Ancestrally Diverse Genome-Wide Association Study and Population-Specific Optimization [Internet]. medRxiv; 2023 [cited 2023 Nov 24]. p. 2023.06.02.23290896. Available from: <https://www.medrxiv.org/content/10.1101/2023.06.02.23290896v1>
22. Ruan Y, Lin YF, Feng YCA, Chen CY, Lam M, Guo Z, et al. Improving Polygenic Prediction in Ancestrally Diverse Populations [Internet]. 2021 Aug [cited 2021 Dec 13] p. 2020.12.27.20248738. Available from: <https://www.medrxiv.org/content/10.1101/2020.12.27.20248738v2>
23. National Academies of Sciences, Engineering, and Medicine; Division of Behavioral and Social Sciences and Education; Health and Medicine Division; Committee on Population; Board on Health Sciences Policy; Committee on the Use of Race, Ethnicity, and Ancestry as Population Descriptors in Genomics Research. Using Population Descriptors in Genetics and Genomics Research: A New Framework for an Evolving Field [Internet]. Washington (DC): National Academies Press (US); 2023 [cited 2023 Dec 12]. (The National Academies Collection: Reports funded by National Institutes of Health). Available from: <http://www.ncbi.nlm.nih.gov/books/NBK589855/>
24. Khan SS, Coresh J, Pencina MJ, Ndumele CE, Rangaswami J, Chow SL, et al. Novel Prediction Equations for Absolute Risk Assessment of Total Cardiovascular Disease Incorporating Cardiovascular-Kidney-Metabolic Health: A Scientific Statement From the American Heart Association. *Circulation* [Internet]. [cited 2023 Nov 14];0(0). Available from: <https://www.ahajournals.org/doi/10.1161/CIR.0000000000001191>
25. Javed Z, Valero-Elizondo J, Dudum R, Khan SU, Dubey P, Hyder AA, et al. Development and validation of a polysocial risk score for atherosclerotic cardiovascular disease. *Am J Prev Cardiol*. 2021 Aug 30;8:100251.
26. Tang J, Sheng C, Wu YY, Yan LL, Wu C. Association of Joint Genetic and Social Environmental Risks With Incident Myocardial Infarction: Results From the Health and Retirement Study. *J Am Heart Assoc*. 2023 Mar 21;12(6):e028200.
27. Cromer SJ, Lakhani CM, Mercader JM, Majarian TD, Schroeder P, Cole JB, et al. Association and Interaction of Genetics and Area-Level Socioeconomic Factors on the Prevalence of Type 2 Diabetes and Obesity. *Diabetes Care*. 2023 Feb 14;46(5):944–52.
28. Lewis MW, Khodneva Y, Redmond N, Durant RW, Judd SE, Wilkinson LL, et al. The impact of the combination of income and education on the incidence of coronary heart disease in the prospective Reasons for Geographic and Racial Differences in Stroke (REGARDS) cohort study. *BMC Public Health*. 2015 Dec 29;15(1):1312.
29. Khaing W, Vallibhakara SA, Attia J, McEvoy M, Thakkinstian A. Effects of education and income on cardiovascular outcomes: A systematic review and meta-analysis. *Eur J Prev Cardiol*. 2017 Jul;24(10):1032–42.
30. Magnani JW, Mujahid MS, Aronow HD, Cené CW, Dickson VV, Havranek E, et al. Health Literacy and Cardiovascular Disease: Fundamental Relevance to Primary and Secondary Prevention: A Scientific Statement From the American Heart Association. *Circulation*. 2018 Jul 10;138(2):e48–74.
31. Sun Y, Liu B, Rong S, Du Y, Xu G, Snetselaar LG, et al. Food Insecurity Is Associated With Cardiovascular and All-Cause Mortality Among Adults in the United States. *J Am Heart Assoc*. 2020 Oct 6;9(19):e014629.
32. Brewer LC, Bowie J, Slusser JP, Scott CG, Cooper LA, Hayes SN, et al. Religiosity/Spirituality and

Cardiovascular Health: The American Heart Association Life's Simple 7 in African Americans of the Jackson Heart Study. *J Am Heart Assoc.* 2022 Sep 6;11(17):e024974.

33. Powell-Wiley TM, Baumer Y, Baah FO, Baez AS, Farmer N, Mahlobo CT, et al. Social Determinants of Cardiovascular Disease. *Circ Res.* 2022 Mar 4;130(5):782–99.

Figures

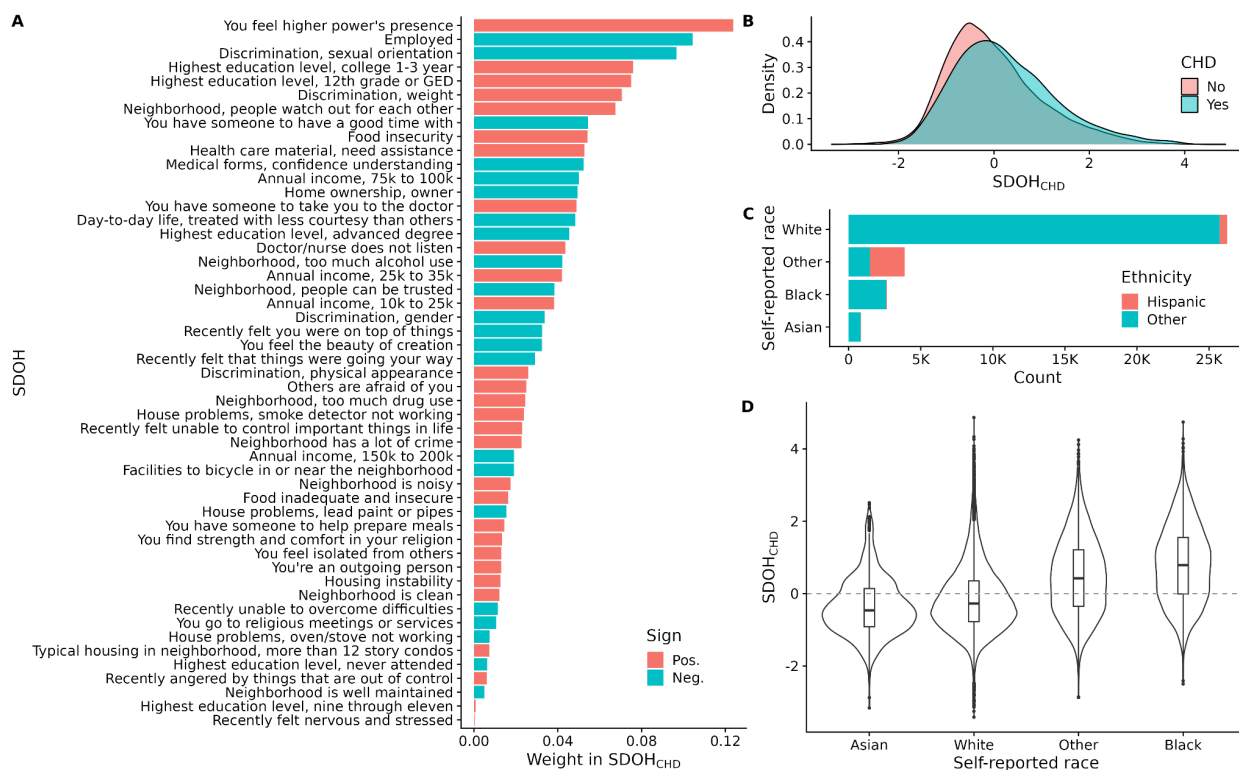


Figure 1. SDOH variables included in $SDOH_{CHD}$, distribution of $SDOH_{CHD}$ stratified by CHD and self-reported race, and the number of participants in the test set, stratified by self-reported race and ethnicity.

A) Weights of the 52 SDOH variables included in $SDOH_{CHD}$. The color indicates the sign of the coefficient for the variable. We used simplified labels representing the SDOH variables on the y-axis. B) Distribution of (standardized) $SDOH_{CHD}$ in the test set, stratified by CHD status. C) Number of participants in the test set, stratified by self-reported race and ethnicity. D) Boxplots and violin plots of (standardized) $SDOH_{CHD}$ in the test set, stratified by self-reported race.

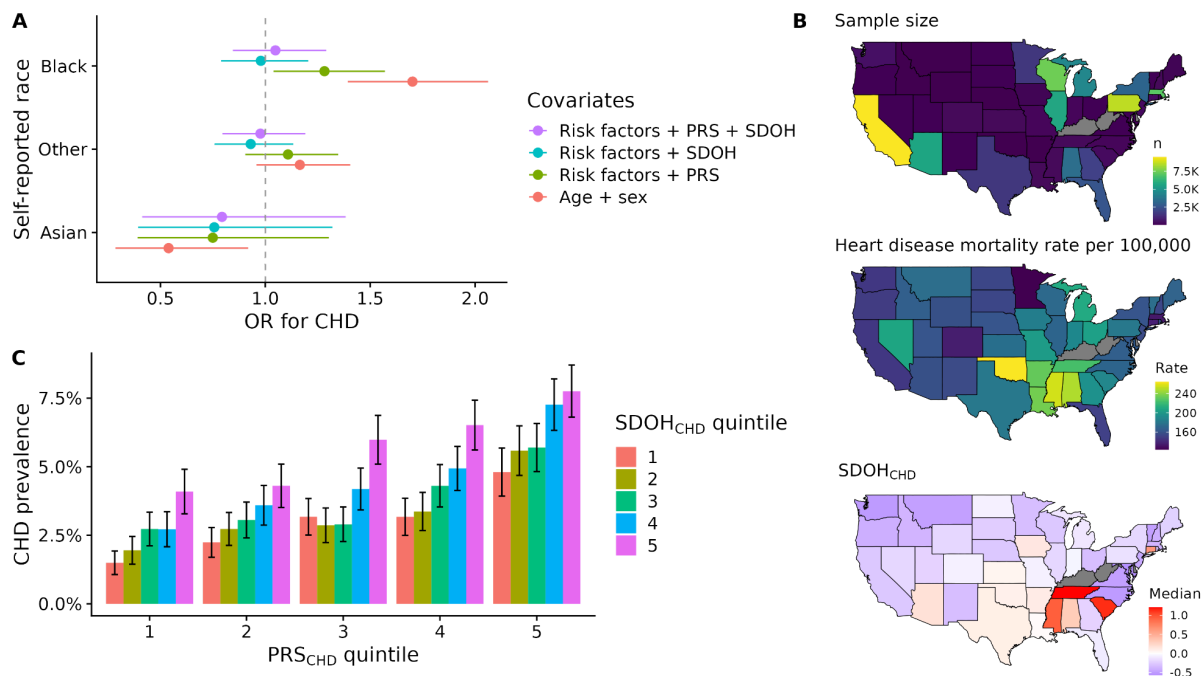


Figure 2. Associations of self-reported race with CHD, geographic variation of SDOH_{CHD} and heart disease mortality by US state, and the distribution of CHD prevalence, stratified by quintiles of SDOH_{CHD} and PRS_{CHD}.

A) We fitted four logistic regression models of CHD in the test set that included indicator variables for self-reported race (“white” being the reference). We show the OR corresponding to the race indicator variable on the x-axis. Different colors indicate different sets of covariates included in the models. The lines denote 95% CIs. B) Geographic variation of median SDOH_{CHD} values and heart disease mortality by US state. We used the full study cohort (n=67,256) and colored states with <20 participants gray. We standardized SDOH_{CHD} before computing median values. The top choropleth map shows the number of participants by US state, the middle map shows heart disease mortality per 100,000 people by US state, and the bottom map shows median SDOH_{CHD} values by US state. C) Distribution of CHD prevalence in the full study cohort (n=67,256), stratified by quintiles of SDOH_{CHD} and PRS_{CHD}. We standardized SDOH_{CHD} in the full study cohort and PRS_{CHD} within genetic ancestry groups. The error bars denote 95% CIs (normal approximations).

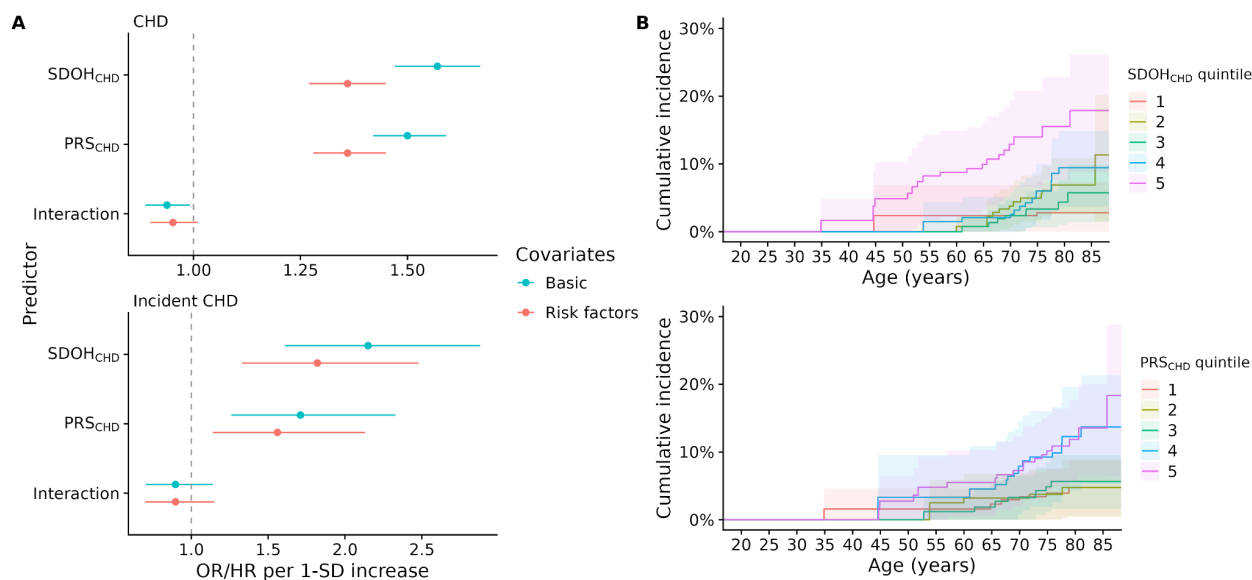


Figure 3. Estimates from regression models of CHD and cumulative incidence of CHD in the test set.

A) Results from logistic and Cox regression models of CHD (top) and incident CHD (bottom) that included SDOH_{CHD}, PRS_{CHD}, an interaction term for the scores, and different sets of covariates (indicated by the colors). B) Cumulative incidence of CHD over a median follow-up of 214 days (IQR, 88) from the time of the SDOH survey, stratified by quintiles of SDOH_{CHD} (top) and quintiles of PRS_{CHD} (bottom).

Tables

Table 1. Demographic characteristics of AoU cohort (n=67,256), stratified by CHD status at the time of the SDOH survey.

Characteristics at the time of the survey	No CHD (n=64,521)	CHD (n=2,735)
Age (years), mean (SD)	59 (16)	70 (11)
Body mass index (kg/m ²), mean (SD)	29.1 (7.0)	30.5 (6.6)
	n (%)	n (%)
Female at birth	42,693 (66.2%)	1,098 (40.1%)
Risk factors and medications		
Hypertension	18,327 (28.4%)	2,307 (84.4%)
Type 2 diabetes	6,717 (10.4%)	1,033 (37.8%)
Ever smoker	22,998 (35.6%)	1,390 (50.8%)
Statins	10,006 (15.5%)	1,306 (47.8%)
Antihypertensives	10,470 (16.2%)	1,188 (43.4%)
Self-reported race		
Asian	1,640 (2.5%)	24 (0.9%)
Black	5,071 (7.9%)	254 (9.3%)
White	50,166 (77.8%)	2,190 (80.1%)
Other	7,652 (11.9%)	267 (9.8%)
Self-reported ethnicity		
Hispanic	5,885 (9.1%)	159 (5.8%)
Not Hispanic	57,078 (88.5%)	2,479 (90.6%)
Other	1,588 (2.5%)	97 (3.5%)
Genetic ancestry group		
AFR	5,584 (8.7%)	273 (10.0%)
AMR	5,567 (8.6%)	140 (5.1%)
EUR	51,244 (79.4%)	2,285 (83.5%)
Other*	2,126 (3.3%)	37 (1.4%)

CHD: coronary heart disease, AFR: African genetic ancestry, AMR: Admixed American genetic ancestry, EUR: European genetic ancestry. *EAS, MID, and SAS.

Table 2. Results from logistic and Cox regression models of CHD that included $SDOH_{CHD}$, PRS_{CHD} , and different sets of covariates in the test set (n=33,628).

		CHD		Incident CHD	
		controls/cases	32,270/1,358	participants/events	32,322/52
Predictor	Covariates	OR per SD (95% CI)	P	HR per SD (95% CI)	P
Models including $SDOH_{CHD}$					
$SDOH_{CHD}$	Basic	1.59 (1.50 to 1.69)	<0.001	2.11 (1.64 to 2.70)	<0.001
	+ Clinical risk factors	1.35 (1.27 to 1.44)	<0.001	1.66 (1.26 to 2.19)	<0.001
Models including PRS_{CHD}					
PRS_{CHD}	Basic	1.53 (1.44 to 1.62)	<0.001	1.72 (1.31 to 2.27)	<0.001
	+ Clinical risk factors	1.37 (1.29 to 1.46)	<0.001	1.53 (1.15 to 2.03)	0.004
Models including $SDOH_{CHD}$ and PRS_{CHD} with interaction					
$SDOH_{CHD}$	Basic	1.58 (1.49 to 1.68)	<0.001	2.14 (1.61 to 2.84)	<0.001
PRS_{CHD}		1.50 (1.42 to 1.60)	<0.001	1.71 (1.27 to 2.34)	<0.001
Interaction term		0.93 (0.88 to 0.98)	0.01	0.90 (0.71 to 1.14)	0.37
$SDOH_{CHD}$	+ Clinical risk factors	1.36 (1.28 to 1.46)	<0.001	1.73 (1.27 to 2.35)	<0.001
PRS_{CHD}		1.37 (1.29 to 1.46)	<0.001	1.57 (1.15 to 2.14)	0.005
Interaction term		0.94 (0.89 to 1.00)	0.05	0.89 (0.70 to 1.15)	0.38

The basic covariate model included age, sex, and 10 PCs. The clinical risk factor model included age, sex, 10 PCs, hypertension, T2D, BMI, smoking status, and statin and antihypertensive medications. We standardized $SDOH_{CHD}$ within the full test set and PRS_{CHD} within each genetic ancestry group.