

SARS-CoV-2 wastewater variant surveillance: pandemic response leveraging FDA's GenomeTrakr network

Authors

^{1*}Ruth E. Timme, ²Jacqueline Woods, ²Jessica L Jones, ²Kevin R Calci, ²Rachel Rodriguez, ²Candace Barnes, ²Elizabeth Leard, ³Mark Craven, ³Haifeng Chen, ³Cameron Boerner, ¹Christopher Grim, ¹Amanda M. Windsor, ¹Padmini Ramachandran, ⁴Tim Muruvanda, ⁴Hugh Rand, ⁴Bereket Tesfaldet, ⁵Jasmine Amirzadegan, ⁶Tunc Kayikcioglu, ⁵Tamara Walsky, ¹Marc Allard, ¹Maria Balkey, ⁵C. Hope Bias, ¹Eric Brown, ¹Kathryn Judy, ¹Tina Pfefer, ¹Sandra M Tallent, ¹Maria Hoffmann, ⁴James Pettengill, and the ⁷GenomeTrakr Laboratory consortium

Emails:

^{1*}Ruth E. Timme, Ruth.Timme@fda.hhs.gov
²Jacqueline Woods, Jacqueline.Woods@fda.hhs.gov
²Jessica L Jones, Jessica.Jones@fda.hhs.gov
²Kevin R Calci, Kevin.Calci@fda.hhs.gov
²Rachel Rodriguez, Rachel.Rodriguez@fda.hhs.gov
²Candace Barnes, cndc.brns93@gmail.com
²Elizabeth Leard, Elizabeth.Leard@fda.hhs.gov
³Mark Craven, Mark.Craven@fda.hhs.gov
³Haifeng Chen, Haifeng.Chen@fda.hhs.gov
³Cameron Boerner, Cameron.Boerner@fda.hhs.gov
¹Christopher Grim, Christopher.Grim@fda.hhs.gov
¹Amanda M. Windsor, Amanda.Windsor@fda.hhs.gov
¹Padmini Ramachandran, Padmini.Ramachandran@fda.hhs.gov
⁴Tim Muruvanda, Tim.Muruvanda@fda.hhs.gov
⁴Hugh Rand, Hugh.Rand@fda.hhs.gov
⁴Bereket Tesfaldet, Bereket.Tesfaldet@fda.hhs.gov
⁵Jasmine Amirzadegan, jamirzadegan@gmail.com
⁶Tunc Kayikcioglu, tkayikci@gmx.com

⁵Tamara Walsky, tmwalsky@gmail.com

¹Marc Allard, Marc.Allard@fda.hhs.gov

¹Maria Balkey, Maria.Balkey@fda.hhs.gov

⁵C. Hope Bias, Candace.Bias@fda.hhs.gov

¹Eric Brown, Eric.Brown@fda.hhs.gov

¹Kathryn Judy, Kathryn.Judy@fda.hhs.gov

¹Tina Pfefer, Tina.Pfefer@fda.hhs.gov

¹Sandra M Tallent, Sandra.Tallent@fda.hhs.gov

¹Maria Hoffmann, Maria.Hoffmann@fda.hhs.gov

⁴James Pettengill, James.Pettengill@fda.hhs.gov

⁸GenomeTrakr Laboratory consortium

*Corresponding Author

Affiliations:

¹Office of Regulatory Science, Center for Food Safety and Applied Nutrition, US Food and Drug Administration, College Park, MD, USA.

²Gulf Coast Seafood Laboratory, Center for Food Safety and Applied Nutrition, US Food and Drug Administration, Dauphin Island, AL, USA.

³Office of Applied Research SA, Center for Food Safety and Applied Nutrition, US Food and Drug Administration, Laurel, MD, USA.

⁴Office of Analytics and Outreach, Center for Food Safety and Applied Nutrition, US Food and Drug Administration, College Park, MD, USA.

⁵Oak Ridge Institute for Science and Education, U.S. Department of Energy, Oak Ridge, TN, USA.

⁶Joint Institute for Food Safety and Applied Nutrition (JIFSAN), University of Maryland – College Park, College Park, MD, USA.

⁷GenomeTrakr laboratory consortium group of authors

ABSTRACT

Wastewater surveillance has emerged as a crucial public health tool for population-level pathogen surveillance. Supported by funding from the American Rescue Plan Act of 2021, the FDA’s

genomic epidemiology program, GenomeTrakr, was leveraged to sequence SARS-CoV-2 from wastewater sites across the United States. This initiative required the evaluation, optimization, development, and publication of new methods and analytical tools spanning sample collection through variant analyses. Version-controlled protocols for each step of the process were developed and published on protocols.io. A custom data analysis tool and a publicly accessible dashboard were built to facilitate real-time visualization of the collected data, focusing on the relative abundance of SARS-CoV-2 variants and sub-lineages across different samples and sites throughout the project. From September 2021 through June 2023, a total of 3,389 wastewater samples were collected, with 2,517 undergoing sequencing and submission to NCBI under the umbrella BioProject, PRJNA757291. Sequence data were released with explicit quality control (QC) tags on all sequence records, communicating our confidence in the quality of data. Variant analysis revealed wide circulation of Delta in the fall of 2021 and captured the sweep of Omicron and subsequent diversification of this lineage through the end of the sampling period. This project successfully achieved two important goals for the FDA's GenomeTrakr program: first, contributing timely genomic data for the SARS-CoV-2 pandemic response, and second, establishing both capacity and best practices for culture-independent, population-level environmental surveillance for other pathogens of interest to the FDA.

IMPORTANCE

This manuscript serves two primary objectives. Firstly, it summarizes the genomic and contextual data collected during a Covid-19 pandemic response project, which utilized the FDA's laboratory network, traditionally employed for sequencing foodborne pathogens, for sequencing SARS-CoV-2 from wastewater samples. Secondly, it outlines best practices for gathering and organizing population-level Next Generation Sequencing (NGS) data collected for culture-free, surveillance of pathogens sourced from environmental samples.

INTRODUCTION

All viruses, including severe acute respiratory syndrome coronavirus 2 (SARS-CoV-2) evolve over time, accumulating random mutations within their genomes that result in new variants and lineages. Although tracking the early spread of SARS-CoV-2 was primarily done through PCR tests, sequencing the entire genome facilitates the identification and tracking of new mutations and lineages. This is especially important when those mutations alter clinical characteristics, such as replicating faster than others,

causing different symptoms or severity of disease, or eluding vaccines or therapeutic treatments. In early 2021 the first “variants of concern” started to emerge from SARS-CoV-2 (1), e.g., Alpha (B.1.1.7), Beta (B.1.351), and (Gamma) P.1. Suddenly, merely testing for the presence of the virus wasn't sufficient to track the pandemic. The full genome sequence became necessary to identify new mutations, emerging variants, and sub-lineages.

FDA’s GenomeTrakr Program (2), a pathogen genomic surveillance network led by the FDA Center for Food Safety and Applied Nutrition (CFSAN), has been collaborating with other US Government and State public health agencies (3) to use whole genome sequence data to ensure food safety and assist with epidemiological investigations of foodborne pathogens since 2012. This laboratory network comprises 31 federal and state public health laboratories, each equipped with the instrumentation and trained personnel required for pathogen sequencing and data submission to the NIH’s National Center for Biotechnology Information (NCBI). By design, the network is focused on sequencing pathogens from food samples, food facilities, the farm environment, and adjacent waterways. Resulting genomic data informs regulatory decisions around foodborne disease outbreaks or food production environments. A dedicated funding model supports these activities, which include submitting raw sequence data along with a minimum set of contextual data to the publicly accessible NCBI database in real time (4). This model, while good general practice for a publicly funded pathogen surveillance network, is also an ideal model for the rapid sharing of pathogen genome sequence data during a global pandemic.

Although SARS-CoV-2 is not a virus that causes foodborne illness, several factors contributed to the tapping of GenomeTrakr to leverage its laboratory network for sequencing SARS-CoV-2 genomes and assist efforts of the U.S. Government to better monitor the spread of new SARS-CoV-2 variants and mutations. Funding for this work came from the American Rescue Plan Act of 2021, which included public health funding for pandemic response. Wastewater was chosen as a surveillance tool for multiple reasons. It is optimal for acquiring timely population-level sequence data given its full suite of circulating and emerging mutations, which are valuable for independent validation and verification of FDA approved therapeutics, diagnostics, and vaccines. New lineages of SARS-CoV-2 can be identified in wastewater samples up to a week prior to being detected in health-care seeking individuals from the same population (5–7). Routine wastewater samples also provide a relatively unbiased capture of genomic variation from the entire sewage catchment area, as opposed to clinical samples of a given population providing limited information on circulating variants. These samples may also reveal cryptic

lineages not seen in the clinical sequence database (8). Furthermore, site locations can be targeted for monitoring specific types of populations (e.g. food production and agriculture workers). Choosing wastewater sites that captured circulating SARS-CoV-2 among these populations would meet these goals for the FDA and compliment efforts by the Centers for Disease Control and Prevention (CDC) and regional partners, which were initially focused on urban sewer sheds.

Our goal here is to provide an overview of FDA's efforts to perform timely wastewater surveillance for SARS-CoV-2 by leveraging the existing GenomeTrakr laboratory network, as well as provide some lessons learned in this endeavor. We also give an overview of the sequence data collected to date from our systematic random wastewater sampling, identify which laboratory methods yielded high quality data, and describe our best practices for implementing these methods within a public health setting.

METHODS

Five major steps were necessary to build capacity for timely SARS-CoV-2 wastewater surveillance by the GenomeTrakr sequencing laboratories: 1) fund GenomeTrakr laboratories recruited for this project; 2) test, optimize, develop, and publish new laboratory methods for sequencing population-level SARS-CoV-2 from wastewater samples; 3) develop and publish data analysis methods that assessed the sequence quality of raw data and predicted proportions of SARS-CoV-2 variants within each sample; 4) develop and publish protocols for timely data submission to NCBI; and 5) create a public dashboard to visualize variant data from those routine data submissions across the network, providing timely data release and data analysis for public health applications.

Laboratory funding and site selection

GenomeTrakr laboratories are supported by the FDA Laboratory Flexible Funding Model (9). With additional funding provided by the American Rescue Plan Act of 2021, in the spring of 2021, participating labs were invited to apply to participate in this special pandemic response wastewater project. Participating labs were required to select a minimum of two regional wastewater sites for routine sample collection, which involved sampling 1-2 times per week over a period of at least 6 months. The SARS-CoV-2 population in each sample would be sequenced, following RT-qPCR detection, and labs would submit both their sequencing data and a suite of rich contextual data to the NCBI as soon as possible. The selected regional wastewater sites were chosen in an attempt to capture areas

within each respective state that had higher populations of food and agriculture workers, assisted by county-level maps generated within FDA's 21 *FORWARD* (10) data platform.

Laboratory method development

In 2021, methods for enriching and sequencing SARS-CoV-2 from wastewater samples were in the early stages of being developed, with most laboratories focused on adapting targeted amplification panels used for clinical sequencing (11–13) to wastewater samples and a few also exploring oligo-capture approaches (14). A comprehensive set of standardized procedures for the entire wastewater processing workflow was needed. This workflow included sample collection, detection and quantification of SARS-CoV-2, SARS-CoV-2 sequencing, analysis, data submission, and visualization. Existing methods covering this workflow were tested, optimized, and published within the GenomeTrakr workspace on protocols.io (15). This platform facilitated real-time communication with version control to our laboratories and to the broader community. In total, 16 new protocols were drafted and published including wastewater sample collection (16), concentration and nucleic acid extraction (17–20), SARS-CoV-2 detection by RT-qPCR (21–23), and SARS-CoV-2 targeted amplification and sequencing (24–27). As long as the participating laboratories adhered to the tiled amplicon + short read sequencing approach established for this project, they had the option of adopting our methods and following our protocols or using different methods of their choice.

Quality Control

At the start of this project in 2021, quality control (QC) checkpoints in the laboratory workflow as well as final QC thresholds for sequence data of SARS-CoV-2 from a mixed population sample had not yet been defined. One project objective was to identify those crucial QC checkpoints within the laboratory workflow and define thresholds for PASS/FAIL at each of these steps that would yield data of sufficient quality to calculate relative abundance of circulating variants within a given sample.

NCBI data structure

Raw sequence data plus an extensive suite of contextual data describing the wastewater catchment area, site location information, methods for sampling, extracting nucleic acids, and sequencing the target pathogen all need to be structured and standardized so that data could be compared within our study and most importantly, among studies. To ensure our data was FAIR (findable, accessible, interoperable, and reusable) (28), we defined a standard data structure, or “Data Object Model” (DOM)

for pathogen-targeted sequence data from environmental sources. To accomplish this, we modified an existing DOM widely used for genomic pathogen surveillance (4, 29). This environmental pathogen DOM is a standard structure, or “open protocol”, providing interoperability across public and private data repositories for population-level pathogen sequence data collected from environmental sources (wastewater, water, soil, air, etc) (Figure 1). This data structure includes a BioProject describing the scope of study (for our study, one BioProject per lab). Linked to the BioProject are a set of BioSamples set at the nucleic acid extraction level. These BioSample records comprise a variety of sample attributes, including the geographic location where the water was collected, specific site information, and sampling/concentration/and nucleic acid methods. Lastly, raw sequence data along with contextual data describing the experimental sequencing methods, filtering, and QC assessment are linked to the BioSample records.

Our data package needed to include several key pieces of contextual data not previously included in NCBI’s BioSample SARS-CoV-2 wastewater template (30) or in their generic SRA metadata template. To fill this gap, we re-used fields from other packages where possible, including 1) sample-level pooling and replicate information, 2) sequence-level methods used for the targeted amplification of SARS-CoV-2, (31), and 3) known QC information as determined by the submitter (32). New custom attributes were created where needed to capture sample collection information (collection_time, collection_volume, instantaneous_flow, and collection_site_id) and laboratory methods for sequencing (enrichment_kit).

Additional BioSample metadata attributes

collection_time*	For grab samples: the time of day the sample was collected in your timezone, 1-12 AM - 1-12 PM.
specimen_processing	Replicate and/or pooling information, critical for interpreting results
specimen_processing_id	Identifier used to track replicates and/or pooled samples
specimen_processing_details	Description of the experimental design, describing the technical or biological replicates and/or pooling design.
collection_site_id*	ID that uniquely identifies the sample collection site among other sample collection sites in this BioProject. It must be unique at the level of the submitter's data BioProject. Where possible, and with agreement from the facility, include the full name of the wastewater treatment plant. If anonymity is requested, create a masking ID to use for all samples collected at this site (e.g. AL-plant-1).

project_name	A concise name that describes the overall project or name of the coordinated sequencing effort from which the sequencing was organized.
collection_volume*	The volume of the sample collected, in mL
concentration_method*	The method used to concentrate a target organism, nucleic acid, or organelle within a sample.
extraction_method*	The protocol used to extract nucleic acids (DNA, RNA, or TNA) from a sample
extraction_control*	Organism (or nucleic acid) used in the extraction protocol to determine successful extraction.
instantaneous_flow*	For grab samples: enter the instantaneous volumetric flow measurement. The time of this measurement should correspond to when the grab sample was taken, and should be reported in UNITS of LITER per day.
Additional SRA metadata attributes	
enrichment_kit*	Method used to enrich the target pathogen(s)
amplicon_PCR_primer_scheme	Provide the name and version of the primer scheme used to generate the amplicons for sequencing.
library_preparation_kit	Library preparation method used to convert a set of amplicons into a library ready for sequencing.
quality_control_method	Populate with the name of the method or pipeline used to evaluate sequence quality, often called "QC pipeline".
quality_control_method_version	List the version number of the quality control pipeline or method used.
quality_control_determination	Result of the quality control assessment. Leave blank if pass/fail thresholds have not been established or choose to flag an issue if known.
quality_control_issues	If there's a known or suspected quality control issue present in the sequence, choose from the available picklist to flag the issue.
quality_control_details	Free text space to include additional description of the flagged quality control issue.
dehosting_method	The method used to remove host reads from the pathogen sequence.
sequence_submitter_contact_email	Email contact for the lab that sequenced the isolate.
raw_sequence_data_processing_method	The method used for raw data processing such as removing barcodes, adapter trimming, filtering etc.

*custom attributes created for this project

After the data structure was defined, we published an NCBI submission protocol adhering to this structure that included the custom BioSample and SRA metadata templates, capturing the full suite of contextual data needed for this project (33).

Data flow and visualization

To effectively communicate and visualize the evolving landscape of SARS-CoV-2 variants detected in wastewater sites throughout the course of our project, we constructed an interactive dashboard in Tableau Desktop (Tableau Software LLC, Seattle, WA). Tableau offered a user-friendly interface, a broad set of dashboard design and development features, and could easily integrate multiple data sources, such as cloud queries of NCBI tables and output files from variant analysis pipelines.

The public dashboard needed to integrate several sources of data to present an informative snapshot of the project's progress (Figure 2). NCBI Entrez queries summarized BioSample records without sequence data. Amazon Web Services (AWS) Athena queries of the SRA metadata table summarized metadata attached to raw sequence (SRA) and BioSample records. New sequence submissions under the BioProject PRJNA757291 were downloaded daily and analyzed with CFSAN's Wastewater Analysis Pipeline (C-WAP) (34) for both QC metrics and to infer relative abundances of SARS-CoV-2 lineages in each sample, computed using the Freyja method (8). A static list of BioProjects, laboratory names, and wastewater sites served to organize the records recovered through NCBI and aid with the final dashboard visualizations.

An important goal of the dashboard was to identify key aspects of the project that would be important to public health, such as geographic regions, stakeholders, temporality, sampling and sequencing progress, and variant calling. A map was used to display geography, stakeholders, and sampling and sequencing progress aspects to help communicate the scale of the project and the number of participating labs. A bar graph was used to show which SARS-CoV-2 variants were detected week to week, along with their relative abundances. Finally, a Gantt chart displayed the progress of participating labs in sampling and sequencing their samples over time.

Users were encouraged to explore the data visualizations by using filters to select which details they most wanted to see. Users could filter the dashboard by state, laboratory, and wastewater collection site. A quality control filter, which defaults to 80% of SARS-CoV-2 genome uncovered, was added to the dashboard on the public-facing webpage for users to filter data by % genome uncovered.

Protocol pilot exercise

As this project entailed building methods to support expanded wastewater surveillance for state public health laboratories, it was important to establish consistency in analyses performed across participating laboratories. At the start of this project, FDA distributed a set of raw wastewater samples to each funded laboratory. These samples served two purposes: 1) they provided an early, standardized set of samples laboratories could use to test new methods, and 2) sequence data collected from each laboratory helped FDA identify which methods met the quality control requirements for this project. FDA collected four large volumes of wastewater (Table 1), comprising two samples taken about a month apart, each with two pseudo-replicates (grab samples taken back-to-back from the same location at the WWTP). Each large-volume sample was then aliquoted into 800ml samples. The October 2021 samples (WPP-sample_SA-1.01, WPP-sample_SA-2.01) were then spiked with 10^6 copies of wildtype SARS-CoV-2 reference RNA (ATCC Heat Inactivated 2019 Novel Coronavirus strain nCoV/USA/WA-1/2020 Part #VR-1986HK). All bottles were frozen at -80C and then shipped to the laboratories on dry ice (four 800mL samples in each shipment). Each laboratory was asked to sequence the population of SARS-CoV-2 from each of these samples using methods of their choice then to submit their resulting raw sequence and contextual data to NCBI.

RESULTS

Participating laboratories

Twenty GenomeTrakr laboratories plus the FDA-CFSAN laboratories received funding for this special project (Table 2). Each laboratory identified at least two wastewater sites (Supplemental Table 1) for routine sampling (1-2x times a week) for a minimum of six months. In total, samples from 81 sites were included in this project. Where feasible, sites were in counties with a higher relative percentage of food and agriculture workers. Sites included both municipal wastewater treatment plants and direct wastewater lines from food processing facilities – spanning both urban and rural populations.

Wastewater Protocol Pilot exercise

Ten laboratories participated in a pilot exercise to assess different laboratory methods being utilized: nine labs provided sequence data from all four distributed samples (Table 1). Those nine laboratories successfully amplified and sequenced SARS-CoV-2 from the four WPP samples (Supplementary Table 2) and submitted their resulting sequences to NCBI (BioProject, PRJNA767800). These submissions were obtained by a diverse array of methods: seven extraction methods, six concentration methods, four

enrichment strategies, seven primer schemes, and seven library preparation methods. One remaining lab opted out of the sequencing portion of the exercise, as they had encountered issues with their ddPCR (droplet digital PCR) method.

The cumulative submissions from multiple laboratories totaled 17 datasets for the four samples. Although the limited number of replicates precludes drawing definitive conclusions about individual or combined methods, several overarching trends emerged that informed our subsequent decisions for real-time sampling. In particular, the “Percent reads aligned” metric confirmed the robust specificity of three different enrichment methods for the SARS-CoV-2 virus: QIAseq DIRECT SARS-CoV-2, NEBNext ARTIC SARS-CoV-2, and Illumina COVIDSeq. The “Percent SARS-CoV-2 genome covered” demonstrated the strong performance of most primer schemes accessed in this exercise. Furthermore, across all tested methods, the variant analyses were largely consistent across samples. Specifically, the sequences for “WPP-sample_B.01” and “WPP-sample_C01” showed mostly Delta variants, while “WPP-sample_SA-1.01” and “WPP-sample_SA-2.01” revealed strong wild-type signal originating from the spiked-in synthetic virus (Supplementary Figure 1).

Quality control thresholds

We determined approximate QC thresholds for the sequence data based on data collected from the protocol pilot exercise and from the first couple months of sequencing. Important considerations for setting these thresholds included determining the percentage of the SARS-CoV-2 genome coverage required to confidently identify population-level variants and sub-lineages, the necessary depth of coverage to capture most of the circulating lineages, the percentage of SARS-CoV-2 in the raw sequence data, and the identification and removal of human sequencing reads prior to public release. We described four QC bins that capture major categories of sequence quality (Table 3) and proposed QC thresholds for three metrics we identified as important for determining high-quality data: % SARS-CoV-2 reads, % SARS-CoV-2 genome uncovered, and average genome coverage depth.

Once we had a QC target for sequence data, we identified three critical QC checkpoints in laboratory workflow (Figure 3). *QC check #1*: Samples containing no detectable SARS-CoV-2 RNA were deemed to have failed QC and were not processed further. However, samples that contained any level of target RNA, even at very low levels, were considered “passing” and sent on to the cDNA synthesis step for amplification. *QC check #2*: To determine whether investing time in library preparation and sequencing

was justifiable in terms of cost and effort, a thorough quality assessment of the PCR product (targeted enrichment) was conducted using the Qubit HS kit and a fragment size analyzer, such as Agilent Tape Station or Bioanalyzer (24, 26). Samples passing this QC step were selected for sequencing. *QC check #3*: The final major QC check involved a rigorous evaluation of the raw sequencing data. For this purpose we developed SSQuAWK4 (35), to automate the QC process for our laboratories; this tool was then made publicly accessible through a custom Galaxy instance, GalaxyTrakr (36). We also used a thorough QC evaluation and variant calling pipeline, CFSAN Wastewater Analysis Pipeline (C-WAP), via command line interface (34). Both reports included key summary metrics, such as percentage of total reads aligned to the SARS-CoV-2 reference genome, average depth of coverage, and percentage of the SARS-CoV-2 genome uncovered (<10X).

Based on that QC assessment, each sequence was assigned a QC bin (A, B, C, or F). While we performed QC assessments from very beginning of data collection, there was some uncertainty about what would qualify as a “high” or “low” quality sequencing run. Therefore, we submitted almost all sequence data to NCBI’s Sequence Read Archive (SRA), along with metadata and QC evaluations (32). Then, to guide future laboratory practices, we devised a decision matrix (Table 3), which became instrumental for downstream selections of which samples merited being featured on the public-facing dashboards.

Summary of data collected

Routine, systematic random, wastewater sample collection for this project was initiated in September 2021 and ended by June 2023, with contributing laboratories submitting sequences in staggered 6-month time periods (Supplemental Figure 2). When detectable levels of SARS-CoV-2 were present determined by quantification of COVID-specific RT/dd -PCR targets as a first phase screening, targeted amplicon approaches were used to sequence the SARS-CoV-2 RNA in the sample. In total, 3,406 wastewater samples were collected, of which 2,517 were subjected to sequencing. The resulting raw sequence data and comprehensive set of standard contextual data were submitted to laboratory-specific NCBI BioProjects, nested under the umbrella BioProject PRJNA757291. Every sample collected and tested for this project has a BioSample entry, even the ones that were not sequenced, thereby providing a unique dataset within NCBI that includes both positive and negative samples.

Standard terminology describing sample collection and sequencing methods were included as attributes on both the sample record (BioSample) and and experiment records (SRA submission). Sample

processing methods utilized varied across the project (Table 4). There was good representation of composite versus grab samples, n=2023 (59.7%) and n=1466 (40.1483 (3%), respectively. Most labs collected raw wastewater, n=3305 (97.5%), with a few primary effluent and post-grit removal samples also included. Among the concentration methods used, 90% of samples were concentrated using one of five methods: Ceres Nanotrap (n=1212), Innovaprep ultrafiltration (n=604), Promega large volume TNA capture kit (n=455453), PEG (polyethylene glycol) precipitation + ultracentrifugation (n=420), and Centricon 100k (n=357). For nucleic acid extraction, the most employed method was the Qiagen MagMAX Viral Kit (n=939, 28%), followed by a variety of similar Promega extraction kits (n=627, 19%).

Sequencing methods were captured at the experiment-level, attached to the raw sequence data (Table 5). Target enrichment methods encompassed broad categories of tiled amplicon approaches, with 90% of submissions choosing QIAseq DIRECT (n=923, 37%), NEBNext ARTIC (n=825, 33%), or the Illumina COVIDSeq Assay (n=433, 17%). PCR primer schemes for these enrichment approaches evolved alongside the virus – in total there were 11 different primer schemes used across the project. Seven different library preparation kits were utilized to prepare the SARS-CoV-2 amplicons for sequencing and 10 different sequencing platforms were used to generate sequence data. Illumina instruments comprised 90% of the sequences submitted (n=2257), followed by Oxford Nanopore Technology (ONT) (n=256, 10%), and finally, a small number sequenced on a PacBio instrument (n=4).

Quality of sequence data

As could be expected from a multi-laboratory project using various field sampling approaches, and performing simultaneous methods development and data collection, the quality of sequences submitted for this project exhibited significant variability, ranging from exceptional to very low quality, based on the predefined thresholds outlined in Table 3. Of the 2,255 Illumina short read sequences, 1381 (61%) were categorized as having "no quality control issues" (A bin), 219 (10%) as "minor quality control issues" (B bin), 633 (28%) as having "potential quality control issues" (C bin), and 22 (<1%) were flagged for "significant quality control issues" (F bin). For the average depth of SARS-CoV-2 genome coverage thresholds, we targeted 1,000X as an ideal, while considering 100X as the minimum. Similarly, the submitted sequence data ranged widely from less than 10X to over 135,000X (Figure 4a), with a notable concentration of sequences below these thresholds flagged as low quality (Figure 4a). Percent of genome uncovered (i.e., percent of the SARS-CoV-2 genome not sequenced with at least 10X coverage) showed a similar pattern, with 72% of submissions falling under our threshold of 40% (Figure 4b).

Sequences for which more than 40% of the genome had not been sequenced were predominantly flagged into the C and F bins (Figure 4b). Conversely, submissions under this threshold, for which more of the genome had been successfully sequenced, were mostly assigned an A or B bin, indicating the coverage of the SARS-CoV-2 genome was suitable for variant analysis. Finally, for each submission, we computed the percentage of raw sequence reads that mapped to the SARS-CoV-2 genome. We see a general trend of reads with high percentages of SARS-CoV-2 being higher quality (Figure 4c) and, conversely, reads with lower percentages of SARS-CoV-2 having a lower QC assessment, although there is no obvious inflection point at 50%, which was our target goal. We had plenty of sequences categorized as high quality, in Bin A, even though only a small fraction of reads might have been identified as SARS-CoV-2.

Variant analysis

To visualize the variants and sub-lineages in wastewater samples over time, we plotted their relative abundance against week of collection, from September 12, 2021 through June 4, 2023 (Figure 5)(37). The dashboard was updated when new submissions appeared at NCBI, with a maximum frequency of once per day, aiming for current data representation. Analysts also continuously monitored public health news for mentions of new and clinically important variants that should be added to the dashboard's legend. Sub-lineages that were not of public health importance or did not contribute more than 1% relative abundance within each sample were collectively categorized as "Others" for the purposes of the public dashboard.

Across the contributing laboratories, most of the sampling occurred in in 2022 (Supplemental Figure 2), resulting in a few dashboard gaps in late 2022 and 2023 (Figure 5). Samples collected from September 2021 through early December 2021 all belonged to Delta sub-lineages. Omicron BA.1 made its initial appearance during the week of December 12th, 2021, swiftly replacing nearly all circulating Delta lineages within the subsequent month. Following this, Omicron BA.2 was identified in our samples in mid-March 2022, taking over from BA.1 by the end of April 2022. In early May, Omicron BA.4 emerged and circulated until October 2022, although it never reached dominance. In late April 2022, Omicron BA.5 was detected and became the predominant circulating sub-lineage until October 2022, when Omicron BQ lineages started appearing. The first widely circulating hybrid Omicron lineage, XBB, emerged in November 2022 and maintained dominance through June 2023.

Turnaround Time

In line with our project's primary objective of delivering timely pandemic sequence data for public health purposes, we evaluated the turnaround time (TAT) as the number of days from sample collection to NCBI data release for each participating laboratory. Our analysis revealed two distinct categories of laboratories based on their approach to sample processing (Figure 6). The first category consisted of five laboratories, including FDA, that processed samples as they were collected, resulting in an average TAT range of approximately 15-30 days. The second category comprised 12 laboratories that initially collected samples but processed them at a later date due to various factors, including supply-chain delays for reagents and instruments, hesitancy within state public health laboratories to publically release data that were collected using non-validated methods (e.g. Lab P), and staffing shortages due to pandemic response burden. Within this category, the average TAT exhibited significant variation, ranging from 60 to 410 days between sample collection and data submission.

DISCUSSION

This project represents the first nation-wide, culture-free, population-level surveillance of a pathogen, with the intention to make data publicly available as it was collected. Within six months of funding acquisition, the GenomeTrakr program successfully implemented surveillance for a novel pathogen, sourced from a new-to-the-program sample origin, despite the requirement for developing new sample collection and preparation methods, optimization of novel sequencing and analysis methods, and need for novel contextual data fields. We demonstrated that these methods work and multiple U.S. local public health, agriculture, and academic laboratories within our network are now equipped and trained to execute these methods when requested at short notice. Data generated through these accomplishments underscore the enduring potential of wastewater sampling as an emerging surveillance tool.

Though largely successful, we encountered several challenges inherent to the targeted amplicon approach chosen for sequencing SARS-CoV-2 in the samples. Our initial primer sets for the targeted amplicons had been designed on previously circulating lineages of SARS-CoV-2; however the ongoing evolution of the SARS-CoV-2 genome during multiple Omicron waves (BA.2, BA.4, BA.5) (38) resulted in periodic dropouts in coverage, or primer pairs that would suddenly stop working. Minor updates to the primer schemes were released in response (39, 40), however these needed to be verified internally to

ensure they worked before we recommend their adoption across our network of laboratories. This proved demanding to keep pace with, necessitating continuous evolution of protocols and metadata template updates alongside our routine surveillance efforts.

Due to their intrinsic reliance on the external sources regarding all SARS-CoV-2 variants ever reported in the literature, similar adaptations were required to ensure bioinformatic analyses were robust and the data analysis pipelines remained current. Each time a new variant or sub-lineage of significance was named, the variant database needed to be updated and the entire dataset feeding the dashboard required re-analysis. This dynamic stands in stark contrast to the WGS protocol employed over the past decade (41), where a consistent protocol works reliably for all enteric bacterial pathogens, and updates to that protocol are infrequent occurrences.

As a direct result of constantly updating laboratory methods, there were periods of time when we were not confident in the variant calling until we were sure participant labs had implemented the primer updates. For example, , as the virus mutated further in early 2022, multiple “Omicron” lineages were co-circulating, resulting in some lineages only differing by a few loci, further compounded by multiple other mutations evolving under convergent evolution (42). If the sequencing missed one or more of these diagnostic loci due to a now-suboptimal experimental design, we would expect an over-representation of parent lineages, mirrored by under-representation of the true variant(s). To address this problem, we attempted to use the QC flags to communicate how confident we were with our sequencing data.

Despite those challenges, wastewater is an ideal environmental sample to target for this project because it captures pathogen shedding at the population or subpopulation level within a spatially explicit geographic region (sewershed or subsewershed). Unlike well-established WGS-based surveillance systems (3, 4), the SARS-CoV-2 amplicon-based sequencing approach requires no culturing step, shaving days to weeks off the turnaround time from sample collection to acquiring sequencing results. For this reason, this project met two important goals for FDA’s GenomeTrakr program: 1) to contribute timely genomic data for SARS-CoV-2 pandemic response, and 2) to develop capacity and best practices for culture-independent, population-level, environmental surveillance for other pathogens of interest to the FDA, namely enteric pathogens central to our food safety mission.

Drawing from our success in managing a laboratory network funded to sequence pure-culture enteric pathogens isolated from environmental and other non-human sources, with NCBI serving as our primary repository (4), we propose the following best practices for employing a comparable distributed laboratory model and utilizing NCBI as the primary repository for the implementation of culture-independent, population-level sequencing of a pathogen from wastewater. 1) Establish a standard data structure, or Data Object Model (DOM), within NCBI (or other repository within the International Nucleotide Sequence Database Collaboration, INSDC) to capture the sequence data and large suite of contextual data. 2) Create a custom FAIR contextual data standard that captures relevant sample and sequence metadata, maps to the DOM, and is interoperable with existing INSDC standards. 3) Define the critical steps within the methods for assessing QC and set thresholds for determining next steps. 4) Publish version-controlled protocols that cover delineation of sewersheds/subsewersheds, sample collection, laboratory methods, quality control assessment, analysis, and INSDC data submission. 5) Process, sequence, and upload sample data to support timely public health actions (not entirely met by our project, but recommended for future efforts). Lastly, 6) develop a public dashboard to visualize current data collection and analysis results to serve the needs of the project.

Acknowledgements

This project was supported in part by funding from the American Rescue Plan Act of 2021 and an appointment to the Research Participation Program at the U.S. Food and Drug Administration administered by the Oak Ridge Institute for Science and Education through an interagency agreement between the U.S. Department of Energy and the U.S. Food and Drug Administration. We would like to acknowledge John Callahan and CFSAN senior leadership for support on this project; Lili Velez for scientific editing; Sebastian Cianci and the web team for help getting the dashboards published; Justin Payne for advice on maintenance and scalability of software; Amy Kirby and Rory Welsh at CDC's National Wastewater Surveillance System for collaboration; Arvind Varsan at Arizona State University for early discussions on sequencing methods; Rose Kantor and Stacia Wyman at UC Berkeley for early discussions on sequencing methods; Jay Garland at EPA and Seth A. Faith at Ohio State University for early discussions on sequencing strategy; Volodymyr Tryndyak and Camila Silva from FDA's National Center for Toxicological Research for collaborative discussions; FDA's 21Forward team for help with maps to help choose the wastewater sites; Josh Levy at the Scripps Research Institute: La Jolla, CA, for advice using Freyja; and Rick Lapoint, John Anderson and the NCBI SRA and BioSample teams for handling all our curation requests.

Supplemental material

Supplemental Figure 1 – WPP variant analysis

Supplemental Figure 2 – Gantt chart

Supplemental Table 1 – Wastewater sites

Supplemental Table 2 – WPP data summary

Supplemental File 1 – BioSample ww template

Supplemental File 2 – SRA metadata template

GenomeTrakr consortium authors

Ward Jacox, Dave Engelthaler, Michael Valentine, Crystal Hepp from Arizona State Department of Health Services and TGen; David Kiang and Zhirong Li from California Department of Public Health; Ryan Gentry, Mary Ann Hagerman, Mary Robinson, Jesse Knibbs, Madi Asbell from Indiana State Department of Health; Beth Johnson, Logan Burns, Ashley Aurand-Cravens, and Joshua Stacy from Kentucky State Cabinet for Health and Family Services; Tracy Stiles, Esther Fortes, Matthew Doucette, Brandon Sabina, Luc Gagne, and Kelly Binns from Massachusetts State Department of Public Health; Mark Pandori, Andrew Gorzalski, and Lauryn Massic from Nevada State Public Health Laboratory; Sarmila Dasgupta, Amar Patil, and Apryle Panyi from New Jersey Department of Agriculture, Animal Health Diagnostic Laboratory; Edward Acheampong, Thomas Kirn, and Nicholas Palmateer from New Jersey State Department of Health; Willis Fedio and Yatziri Preciado from New Mexico State University - Las Cruces, and Srikanth Paladugu from New Mexico Department of Health; Siddhartha Thakur, Lyndy Harden-Plumley, and Luke Raymond from North Carolina State University – Raleigh; Melanie Prarat, Ashley Sawyer, and Jonah Perkins from Ohio Department of Agriculture; Edward Dudley, Jasna Kovac, [Nkuchia M. M'ikanatha](#), Erin M. Nawrocki, Yezhi Fu, and Nyduta Mbogo from Pennsylvania State University - University Park; Kristin Carpenter-Azevedo, Richard C. Huard, and Sean Sierra-Patev from Rhode Island Department of Health, State Health Laboratory; Megan Davis, Laura M. Lane, Christy A. Jeffcoat, Gregory Goodwin, Gabrielle Godfrey, Smith, Andrew, Chukwuemika N Aroh, Kirsti R. Gilmore, and Jessica Freeman from South Carolina Department of Health and Environmental Control; Joy Scaria, Jane Hennings, and Eric Nelson from South Dakota State University; Yan Sun, Bonnie Oh, and Michael Jost from Texas Department of State Health Services, and Bryan Brooks and Laura Langan from Baylor

University, Waco, Texas; Lauren Turner, Stephanie Dela Cruz, Jessica Maitland, Shelby Bennett, Logan Fink, Mary Toothman, and Hyunsook Moon from Virginia Division of Consolidated Laboratory Services; Yong Liu and Mychal Hendrickson from Washington State Department of Agriculture; Darren Lucas, Phillip Dykema, Roxanne Meek, Geoff Melly, Paige Sickles, Breanna McArdle, and Anneke Jansen from Washington State Department of Health; Megan Young, Josh Arbaugh, and Zachary Kuhl from West Virginia Department of Agriculture; and Ewa King from the Association of Public Health Laboratories.

REFERENCES

1. World Health Organization. 2021. Weekly epidemiological update - 2 February 2021.
<https://www.who.int/publications/m/item/weekly-epidemiological-update---2-february-2021>.
Retrieved 24 November 2022.
2. Allard MW, Strain E, Melka D, Bunning K, Musser SM, Brown EW, Timme RE. 2016. Practical Value of Food Pathogen Traceability through Building a Whole-Genome Sequencing Network and Database. *J Clin Microbiol* 54:1975–1983.
3. Stevens EL, Carleton HA, Beal J, Tillman GE, Lindsey RL, Lauer AC, Pightling A, Jarvis KG, Ottesen A, Ramachandran P, Hintz L, Katz LS, Folster JP, Whichard JM, Trees E, Timme RE, McDermott P, Wolpert B, Bazaco M, Zhao S, Lindley S, Bruce BB, Griffin PM, Brown E, Allard M, Tallent S, Irvin K, Hoffmann M, Wise M, Tauxe R, Gerner-Smidt P, Simmons M, Kissler B, Defibaugh-Chavez S, Klimke W, Agarwala R, Lindsay J, Cook K, Austerman SR, Goldman D, McGarry S, Hale KR, Dessai U, Musser SM, Braden C. 2022. The Use of Whole-Genome Sequencing by the Federal Interagency Collaboration for Genomics for Food and Feed Safety in the United States. *J Food Prot* <https://doi.org/10.4315/JFP-21-437>.

4. Timme RE, Wolfgang WJ, Balkey M, Venkata SLG, Randolph R, Allard M, Strain E. 2020. Optimizing Open Data to Support One Health: Best Practices to Ensure Interoperability of Genomic Data from Microbial Pathogens <https://doi.org/10.20944/preprints202004.0253.v1>.
5. Bivins A, North D, Ahmad A, Ahmed W, Alm E, Been F, Bhattacharya P, Bijlsma L, Boehm AB, Brown J, Buttiglieri G, Calabro V, Carducci A, Castiglioni S, Cetecioglu Gurol Z, Chakraborty S, Costa F, Curcio S, de los Reyes FL, Delgado Vela J, Farkas K, Fernandez-Casi X, Gerba C, Gerrity D, Girones R, Gonzalez R, Haramoto E, Harris A, Holden PA, Islam MdT, Jones DL, Kasprzyk-Hordern B, Kitajima M, Kotlarz N, Kumar M, Kuroda K, La Rosa G, Malpei F, Mautus M, McLellan SL, Medema G, Meschke JS, Mueller J, Newton RJ, Nilsson D, Noble RT, van Nuijs A, Peccia J, Perkins TA, Pickering AJ, Rose J, Sanchez G, Smith A, Stadler L, Stauber C, Thomas K, van der Voorn T, Wigginton K, Zhu K, Bibby K. 2020. Wastewater-Based Epidemiology: Global Collaborative to Maximize Contributions in the Fight Against COVID-19. *Environ Sci Technol* 54:7754–7757.
6. Medema G, Heijnen L, Elsinga G, Italiaander R, Brouwer A. 2020. Presence of SARS-Coronavirus-2 RNA in Sewage and Correlation with Reported COVID-19 Prevalence in the Early Stage of the Epidemic in The Netherlands. *Environ Sci Technol Lett* 7:511–516.
7. Gerrity D, Papp K, Stoker M, Sims A, Frehner W. 2021. Early-pandemic wastewater surveillance of SARS-CoV-2 in Southern Nevada: Methodology, occurrence, and incidence/prevalence considerations. *Water Res X* 10:100086.
8. Karthikeyan S, Levy JI, De Hoff P, Humphrey G, Birmingham A, Jepsen K, Farmer S, Tubb HM, Valles T, Tribelhorn CE, Tsai R, Aigner S, Sathe S, Moshiri N, Henson B, Mark AM, Hakim A, Baer NA, Barber T, Belda-Ferre P, Chacón M, Cheung W, Cresini ES, Eisner ER, Lastrella AL, Lawrence ES, Marotz CA, Ngo TT, Ostrander T, Plascencia A, Salido RA, Seaver P, Smoot EW, McDonald D,

Neuhard RM, Scioscia AL, Satterlund AM, Simmons EH, Abelman DB, Brenner D, Bruner JC, Buckley A, Ellison M, Gattas J, Gonias SL, Hale M, Hawkins F, Ikeda L, Jhaveri H, Johnson T, Kellen V, Kremer B, Matthews G, McLawhon RW, Ouillet P, Park D, Pradenas A, Reed S, Riggs L, Sanders A, Sollenberger B, Song A, White B, Winbush T, Aceves CM, Anderson C, Gangavarapu K, Hufbauer E, Kurzban E, Lee J, Matteson NL, Parker E, Perkins SA, Ramesh KS, Robles-Sikisaka R, Schwab MA, Spencer E, Wohl S, Nicholson L, Mchardy IH, Dimmock DP, Hobbs CA, Bakhtar O, Harding A, Mendoza A, Bolze A, Becker D, Cirulli ET, Isaksson M, Schiabor Barrett KM, Washington NL, Malone JD, Schafer AM, Gurfield N, Stous S, Fielding-Miller R, Garfein RS, Gaines T, Anderson C, Martin NK, Schooley R, Austin B, MacCannell DR, Kingsmore SF, Lee W, Shah S, McDonald E, Yu AT, Zeller M, Fisch KM, Longhurst C, Maysent P, Pride D, Khosla PK, Laurent LC, Yeo GW, Andersen KG, Knight R. 2022. Wastewater sequencing reveals early cryptic SARS-CoV-2 variant transmission. *Nature* 1–4.

9. FDA-ORA. 2023. Laboratory Flexible Funding Model Cooperative Agreement Program. FDA.

10. FDA. 2021. 21 FORWARD: Unleashing the Power of FDA Data to Support COVID-19 Vaccine Distribution to Food and Agriculture Workers. 21FORWARD. FDA. <https://www.fda.gov/news-events/fda-voices/unleashing-power-fda-data-support-covid-19-vaccine-distribution-food-and-agriculture-workers>. Retrieved 29 November 2022.

11. Fontenele RS, Kraberger S, Hadfield J, Driver EM, Bowes D, Holland LA, Faleye TOC, Adhikari S, Kumar R, Inchausti R, Holmes WK, Deitrick S, Brown P, Duty D, Smith T, Bhatnagar A, Yeager RA, Holm RH, Hoogesteijn von Reitzenstein N, Wheeler E, Dixon K, Constantine T, Wilson MA, Lim ES, Jiang X, Halden RU, Scotch M, Varsani A. 2021. High-throughput sequencing of SARS-CoV-2 in wastewater provides insights into circulating variants. *MedRxiv Prepr Serv Health Sci* <https://doi.org/10.1101/2021.01.22.21250320>.

12. Izquierdo-Lara R, Elsinga G, Heijnen L, Munnink BBO, Schapendonk CME, Nieuwenhuijse D, Kon M, Lu L, Aarestrup FM, Lycett S, Medema G, Koopmans MPG, Graaf M de. Monitoring SARS-CoV-2 Circulation and Diversity through Community Wastewater Sequencing, the Netherlands and Belgium - Volume 27, Number 5—May 2021 - Emerging Infectious Diseases journal - CDC <https://doi.org/10.3201/eid2705.204410>.
13. Spurbeck RR, Minard-Smith AT, Catlin LA. 2021. Applicability of Neighborhood and Building Scale Wastewater-Based Genomic Epidemiology to Track the SARS-CoV-2 Pandemic and other Pathogens. medRxiv 2021.02.18.21251939.
14. Crits-Christoph A, Kantor RS, Olm MR, Whitney ON, Al-Shayeb B, Lou YC, Flamholz A, Kennedy LC, Greenwald H, Hinkle A, Hetzel J, Spitzer S, Koble J, Tan A, Hyde F, Schroth G, Kuersten S, Banfield JF, Nelson KL. 2021. Genome Sequencing of Sewage Detects Regionally Prevalent SARS-CoV-2 Variants. mBio 12.
15. Timme R. Wastewater protocols within the protocols.io GenomeTrakr workspace. protocols.io. <https://www.protocols.io/workspaces/genometrakr1>. Retrieved 11 December 2023.
16. Calci K. 2021. Collection from Wastewater Treatment Plant, Transportation, and Storage of Raw Wastewater. protocols.io <https://doi.org/dx.doi.org/10.17504/protocols.io.bycepste>.
17. Woods J, Rodrigues R. 2021. Virus Concentration from Wastewater Using PEG Precipitation and Ultracentrifugation. protocols.io <https://doi.org/dx.doi.org/10.17504/protocols.io.bx9ipr4e>.
18. Walsky T, Ramachandran P, Windsor A, Hoffmann M, Grim C. 2022. Extraction of Total Nucleic Acid from Wastewater Using the Promega Wizard Enviro Total Nucleic Acid Kit. protocols.io <https://doi.org/dx.doi.org/10.17504/protocols.io.4r3l2oebxv1y/v1>.

19. Walsky T, Ramachandran P, Windsor A, Hoffmann M, Grim C. 2022. RNA Extraction and Quality Assessment targeting SARS-CoV-2 from Wastewater Concentrates using Zymo Environ Water RNA Kit. protocols.io <https://doi.org/dx.doi.org/10.17504/protocols.io.b3inqkde>.
20. Woods J, Rodrigues R. 2021. RNA Extraction from Wastewater Concentrates Using RNeasy and Zymo Kits. protocols.io <https://doi.org/dx.doi.org/10.17504/protocols.io.bygvptw6>.
21. Windsor A, Walsky T, Ramachandran P, Grim C, Hoffmann M. 2022. RTqPCR of SARS-CoV-2 N1 Target on ABI 7500 Fast Using Promega GoTaq Enviro Wastewater SARS-CoV-2 System V1. protocols.io <https://doi.org/dx.doi.org/10.17504/protocols.io.rm7vzy52lx1/v1>.
22. Woods J, Rodrigues R. 2021. RT-qPCR Detection of SARS-CoV-2 from Wastewater Using the AB 7500 V.2. protocols.io <https://doi.org/dx.doi.org/10.17504/protocols.io.6qpvrjd4bgmk/v2>.
23. Woods J, Rodrigues R. 2021. RT-qPCR Detection of Process Controls (Murine norovirus and crAssphage) from Wastewater using AB 7500 V.2. protocols.io <https://doi.org/dx.doi.org/10.17504/protocols.io.kqdg36j9pg25/v2>.
24. Ramachandran P, Walsky T, Windsor A, Hoffmann M, Grim C. 2022. Enhanced QIAseq DIRECT SARS-CoV-2 Kit for Illumina MiSeq V.4. protocols.io <https://doi.org/dx.doi.org/10.17504/protocols.io.rm7vzy39rlx1/v4>.
25. Ramachandran P, Walsky T, Windsor A, Hoffmann M, Grim C. 2021. Modified NEBNext® VarSkip Short SARS-CoV-2 Library Prep Kit for Illumina Platforms - adapted for wastewater samples V.3. protocols.io <https://doi.org/dx.doi.org/10.17504/protocols.io.5jyl89n26v2w/v3>.
26. Ramachandran P, Walsky T, Windsor A, Grim C, Hoffmann M. 2022. Modified NEBNext® VarSkip Short SARS-CoV-2 Enrichment and library prep for Oxford Nanopore Technologies- adapted for

wastewater samples V.2. protocols.io

<https://doi.org/dx.doi.org/10.17504/protocols.io.3byl4bwervo5/v2>.

27. Ramachandran P, Walsky T, Windsor A, Hoffmann M, Grim C. 2022. Modified Illumina DNA Prep (M) Tagmentation Library Preparation for cDNA amplicons from wastewater. protocols.io
<https://doi.org/dx.doi.org/10.17504/protocols.io.b34rqqv6>.
28. Wilkinson MD, Dumontier M, Aalbersberg IJJ, Appleton G, Axton M, Baak A, Blomberg N, Boiten J-W, da Silva Santos LB, Bourne PE, Bouwman J, Brookes AJ, Clark T, Crosas M, Dillo I, Dumon O, Edmunds S, Evelo CT, Finkers R, Gonzalez-Beltran A, Gray AJG, Groth P, Goble C, Grethe JS, Heringa J, 't Hoen PAC, Hooft R, Kuhn T, Kok R, Kok J, Lusher SJ, Martone ME, Mons A, Packer AL, Persson B, Rocca-Serra P, Roos M, van Schaik R, Sansone S-A, Schultes E, Sengstag T, Slater T, Strawn G, Swertz MA, Thompson M, van der Lei J, van Mulligen E, Velterop J, Waagmeester A, Wittenburg P, Wolstencroft K, Zhao J, Mons B. 2016. The FAIR Guiding Principles for scientific data management and stewardship. *Sci Data* 3:160018.
29. Timme RE, Karsch-Mizrachi I, Waheed Z, Arita M, MacCannell D, Maguire F, Petit III R, Page AJ, Mendes CI, Nasar MI, Oluniyi P, Tyler AD, Raphenya AR, Guthrie JL, Olawoye I, Rinck G, O’Cathail C, Lees J, Cochrane G, Cummins C, Brister JR, Klimke W, Feldgarden M, Griffiths E. 2023. Putting everything in its place: using the INSDC compliant Pathogen Data Object Model to better structure genomic data submitted for public health applications. *Microb Genomics* 9:001145.
30. NCBI. 2021. BioSample Package: SARS-CoV-2 wastewater surveillance, version 1.0.
https://submit.ncbi.nlm.nih.gov/biosample/template/?organism-organism_name=&organism-taxonomy_id=&package-0=SARS-CoV-2.wwsurv.1.0&action=definition. Retrieved 22 August 2023.

31. Griffiths EJ, Timme RE, Mendes CI, Page AJ, Alikhan N-F, Fornika D, Maguire F, Campos J, Park D, Olawoye IB, Oluniyi PE, Anderson D, Christoffels A, da Silva AG, Cameron R, Dooley D, Katz LS, Black A, Karsch-Mizrachi I, Barrett T, Johnston A, Connor TR, Nicholls SM, Witney AA, Tyson GH, Tausch SH, Raphenya AR, Alcock B, Aanensen DM, Hodcroft E, Hsiao WWL, Vasconcelos ATR, MacCannell DR, on behalf of the Public Health Alliance for Genomic Epidemiology (PHA4GE) consortium. 2022. Future-proofing and maximizing the utility of metadata: The PHA4GE SARS-CoV-2 contextual data specification package. *GigaScience* 11:giac003.
32. Griffiths E, Mendes CI, Maguire F, Guthrie J, Chindelevitch L, Karsch-Mizrachi I, Waheed Z, Cameron R, Holt K, Katz L, Iii RP, MacCannell D, Dave M, Oluniyi P, Nasar MI, Raphenya A, Hsiao W, Timme R. 2023. PHA4GE Quality Control Contextual Data Tags: Standardized Annotations for Sharing Public Health Sequence Datasets with Known Quality Issues to Facilitate Testing and Training. 2023030037. Preprints <https://doi.org/10.20944/preprints202303.0037.v1>.
33. Timme R, Bias C, Balkey M. 2021. NCBI submission protocol for SARS-CoV-2 wastewater data: SRA, BioSample, and BioProject. V10. [protocols.io](https://doi.org/dx.doi.org/10.17504/protocols.io.ewov14w27vr2/v10) <https://doi.org/dx.doi.org/10.17504/protocols.io.ewov14w27vr2/v10>.
34. Kayikcioglu T, Amirzadegan J, Rand H, Tesfaldet B, Timme RE, Pettengill JB. 2023. Performance of methods for SARS-CoV-2 variant detection and abundance estimation within mixed population samples. *PeerJ* 11:e14596.
35. Amirzadegan J, Kayikcioglu T, Rand H, Timme R, Balkey M. 2022. Wastewater QC workflow in GalaxyTrakr (SSQuAWK4) V.9. [protocols.io](https://doi.org/dx.doi.org/10.17504/protocols.io.kxygzxk5dv8j/v9) <https://doi.org/dx.doi.org/10.17504/protocols.io.kxygzxk5dv8j/v9>.

36. Gangiredla J, Rand H, Benisatto D, Payne J, Strittmatter C, Sanders J, Wolfgang WJ, Libuit K, Herrick JB, Prarat M, Toro M, Farrell T, Strain E. 2021. GalaxyTrakr: a distributed analysis tool for public health whole genome sequence data accessible to non-bioinformaticians. *BMC Genomics* 22:114.
37. Kayikciogly T, Amirzadegan J. 2021. Variant abundance estimations from wastewater surveillance study by FDA/CFSAN. FDA-CFSAN (Center for Food Safety and Applied Nutrition).
38. Tegally H, Moir M, Everatt J, Giovanetti M, Scheepers C, Wilkinson E, Subramoney K, Makatini Z, Moyo S, Amoako DG, Baxter C, Althaus CL, Anyaneji UJ, Kekana D, Viana R, Giandhari J, Lessells RJ, Maponga T, Maruapula D, Choga W, Matshaba M, Mbulawa MB, Msomi N, Naidoo Y, Pillay S, Sanko TJ, San JE, Scott L, Singh L, Magini NA, Smith-Lawrence P, Stevens W, Dor G, Tshiabuila D, Wolter N, Preiser W, Treurnicht FK, Venter M, Chiloane G, McIntyre C, O'Toole A, Ruis C, Peacock TP, Roemer C, Kosakovsky Pond SL, Williamson C, Pybus OG, Bhiman JN, Glass A, Martin DP, Jackson B, Rambaut A, Laguda-Akingba O, Gaseitsiwe S, von Gottberg A, de Oliveira T. 2022. Emergence of SARS-CoV-2 Omicron lineages BA.4 and BA.5 in South Africa. *Nat Med* 28:1785–1790.
39. New England Biolabs Inc. 2023. VarSkip multiplex PCR designs for SARS-CoV-2 sequencing. New England Biolabs Inc.
40. ARTIC Network. 2023. ARTIC Network - SARS-CoV-2 version 5.3.2 primer scheme release. ARTIC Real-Time Genomic Surveill. <https://community.artic.network/t/sars-cov-2-version-5-3-2-scheme-release/462>. Retrieved 11 December 2023.
41. Pfeifer T, Haendiges J, Balkey M, Timme R. 2022. GenomeTrakr WGS Protocol Collection and Workflow for MiSeq V.2. [protocols.io](https://doi.org/dx.doi.org/10.17504/protocols.io.3byl4bwyjvo5/v2)
<https://doi.org/dx.doi.org/10.17504/protocols.io.3byl4bwyjvo5/v2>.

42. Focosi D, Quiroga R, McConnell S, Johnson MC, Casadevall A. 2023. Convergent Evolution in SARS-CoV-2 Spike Creates a Variant Soup from Which New COVID-19 Waves Emerge. 3. Int J Mol Sci 24:2264.

TABLES

Table 1. Wastewater Protocol Pilot exercise samples.

BioSample "sample_name"	Collection date	WWTP location	Treatment
WPP-sample_B.01	2021-09-20	Mobile, AL	Raw wastewater
WPP-sample_C.01	2021-09-20	Mobile, AL	Raw wastewater
WPP-sample_SA-1.01	2021-10-21	Pascagoula, MS	Raw wastewater spiked with wt SARS-CoV-2, 10 ⁶ copies/800mL
WPP-sample_SA-2.01	2021-10-21	Pascagoula, MS	Raw wastewater spiked with wt SARS-CoV-2, 10 ⁶ copies/800mL

Table 2. List of participating laboratories. Twenty GenomeTrakr laboratories plus FDA-CFSAN participated in this project.

Laboratory names

Arizona State Department of Health Services, T-Gen North
California Department of Public Health
Indiana State Department of Health
Kentucky State Cabinet for Health and Family Services
Massachusetts State Department of Public Health
Nevada State Public Health Laboratory, University of Nevada - Reno
New Jersey State Department of Agriculture
New Jersey Department of Health
New Mexico State University - Las Cruces
North Carolina State University - Raleigh
Ohio State Department of Agriculture
Pennsylvania State University - University Park
Rhode Island Department of Health, State Health Laboratory
South Carolina Department of Health and Environmental Control
South Dakota State University
Texas Department of State Health Services
Virginia Division of Consolidated Laboratory Services
Washington State Department of Agriculture
Washington State Department of Health
West Virginia Department of Agriculture
FDA-Center for Food Safety and Applied Nutrition

Table 3. Quality control (QC) for SARS-CoV-2 sequencing data. Four QC categories, or bins, were established based on thresholds set for various QC metrics. Sequence tags were developed to

communicate these categories directly on the sequence file in an attribute called “quality_control_determination”. Only data with QC tagged in the A or B bin was visualized on the public FDA variant analysis dashboard.

QC bin	QC bin description	% genome uncovered (<10X)	Average coverage	Other observations	Submit to NCBI	Tag for SRA attribute: "quality_control_determination"	Included in FDA Dashboard
A	No QC issues evident	<5%	>1000X	>50% reads are SARS-CoV-2	Yes	no quality control issues identified	Yes
B	Some QC issues, but variant calling likely OK	6% - 40%	100X-1000X		Yes	minor quality control issues identified	Yes
C	Insufficient data for confidence in variant calling	40% - 95%	10X-100X	low fraction of lineage specific mutations, (C-WAP reports)	Yes	sequence flagged for potential quality control issues	No
F	Significant QC and/or study design issues	>95%	< 10X	< 5% reads SARS-Cov-2, suspected contamination (SNR low), low sequence quality, etc.	No	sequence flagged for significant quality control issues	No

Table 4. Sample methods included on NCBI’s public BioSample records. Methods cover type of sample collection, wastewater sample matrix, viral concentration method, and nucleotide extraction method.

Sample Type	# of BioSamples	# of Labs	% of Total
composite	2023	18	59.7
grab	1466	8	40.3
Total	3389		
Sample Matrix	# of BioSamples	# of Labs	% of Total
Raw Wastewater	3306	19	97.5
Post-Grit Removal	79	1	2.3
Primary Effluent	4	1	0.1
Missing	1	1	<0.1
Total	3389		
Viral Concentration Method	# of BioSamples	# of Labs	% of Total
Ceres Nanotrap	1212	8	35.8
Innovaprep ultrafiltration	604	5	17.8
Promega wastewater large volume TNA capture kit	455	5	13.4
Peg precipitation + ultracentrifugation	420	4	12.4
Centricon 100k	357	1	10.5
Zymo Water Concentration Buffer	155	1	4.6
Skim Milk Flocculation	99	1	2.9
Membrane filtration with acidification and MgCl2	64	2	1.9
Innovaprep CP Select	19	1	0.5
backflushed raw ww using rexseed filters; Promega wastewater large column TNA capture kit	4	1	0.1
Total	3389		

Nucleotide Extraction Method	# of BioSamples	# of Labs	% of Total
Qiagen MagMAX Viral Kit	939	2	27.7
Promega Extraction Kits	627	5	18.5
Qiagen AllPrep Powerviral DNA/RNA kit	424	4	12.5
Qiagen RNeasy Powerwater Kit	324	4	9.6
Zymo quick-rna viral kit	345	2	10.2
Zymo Environ Water RNA Kit (R2042)	262	1	7.7
QIAamp Viral RNA mini kit	201	5	5.9
neb monarch total rna miniprep kit + zymo onestep pcr inhibitor removal kit	155	1	4.6
mcaherey-nagel nucleomag DNA/RNA water kit	108	1	3.2
Ceres Nanotrap	4	2	0.1
Total	3389		

Table 5. Sequencing methods included on NCBI's public SRA records. Methods cover enrichment kit (general approach for enriching the target pathogen), Amplicon PCR primer scheme, library preparation kit, and sequencing instrument name.

Enrichment Kit	# of Sequences	# of Labs	% of Total
QIAseq DIRECT SARS-CoV-2	923	3	36.7
NEBNext ARTIC SARS-CoV-2 RT-PCR Module	825	12	32.8
Illumina COVIDSeq Assay	433	1	17.2
Swift Normalase Amplicon SARS-CoV-2 Panels	199	1	7.9
Not Applicable	137	4	5.4
Total	2517		
Amplicon PCR Primer Scheme	# of Sequences	# of Labs	% of Total
ARTIC V3	125	1	5.0
ARTIC V4	308	1	12.2
ARTIC V4.1	131	4	5.2
NEB VarSkip 1a Long	18	1	0.7
NEB VarSkip 1a Short	125	5	5.0
NEB VarSkip 2a Short	307	8	12.2
NEB VarSkip 2b Short	369	7	14.7
QIAseq DIRECT SARS-CoV-2 - Boosted	97	2	3.9
QIAseq DIRECT SARS-CoV-2 Primers	838	3	33.3
SARS-CoV-2 SNAP primer pool	199	1	7.9
Total	2517		
Library Preparation Kit	# of Sequences	# of Labs	% of Total
Amplicon Sequencing Kit (PacBio)	4	1	0.2
Illumina DNA Prep	513	8	20.4
Ligation sequencing kit	286	3	11.4
NEBNext ARTIC SARS-CoV-2 Library Prep Kit (Illumina)	514	5	20.4
NEBNext Ultra II FS DNA Library Prep for Illumina	6	1	0.2
QIAseq DIRECT Unique Dual Index Prep	995	4	39.5
Swift Normalase Amplicon SARS-CoV-2 Panels	199	1	7.5
Total	2514		
Sequencing Instrument	# of Sequences	# of Labs	% of Total
Illumina iSeq 100	55	2	2.2
Illumina MiniSeq	440	4	17.5
Illumina MiSeq	1622	14	64.4
Illumina NovaSeq 6000	83	1	3.3
NextSeq 550	57	1	2.3
GridION	8	1	0.3
MinION	248	1	9.9

Sequel II	4	1	0.2
Total	2517		

FIGURES

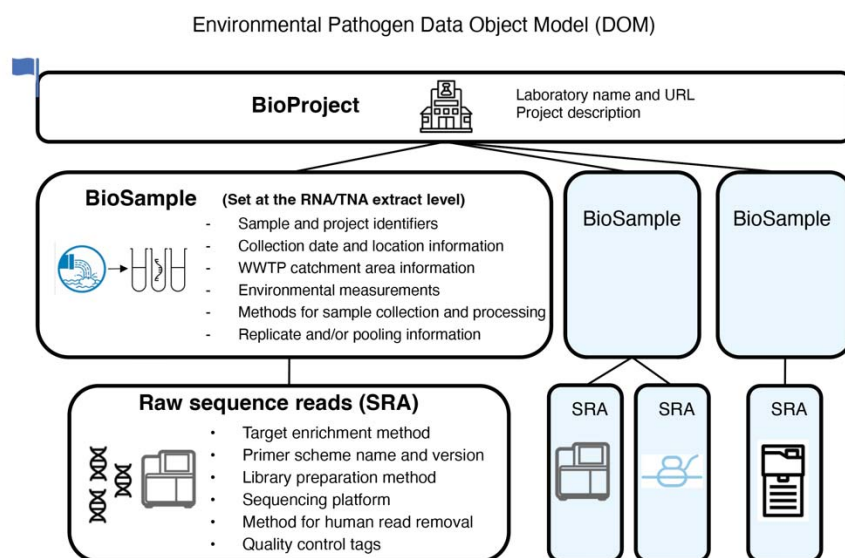


Figure 1. NCBI data structure for population-level pathogen surveillance, or Env. Pathogen Data Object Model (DOM). This Env pathogen DOM has sample and sequence contextual data required for analyzing wastewater sequence data with a single target pathogen, SARS-CoV-2. The flag on the BioProject represents the automated human-read scrubbing by NCBI for all data submissions linked to this project.

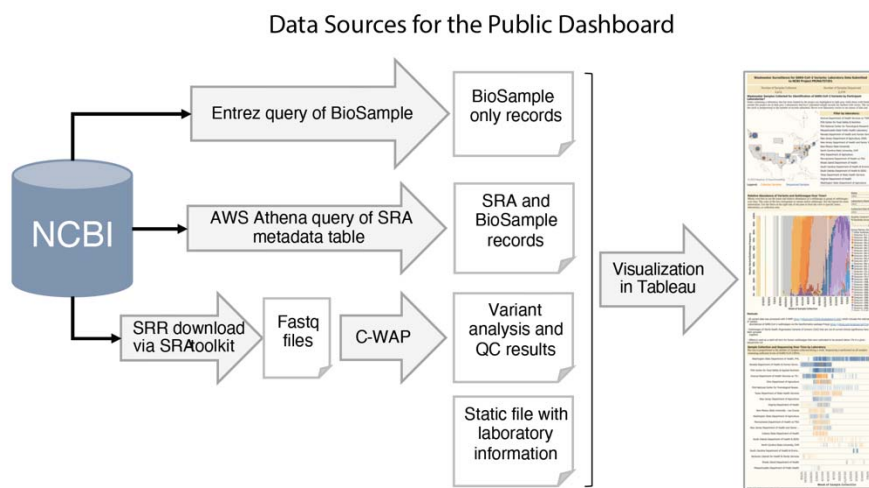


Figure 2. Data Sources for the public dashboard summarizing Wastewater Surveillance for SARS-CoV-2 Variants. The compilation of information for the public dashboard involved two distinct NCBI queries and a sequence analysis pipeline. Daily queries were executed to capture new submissions, and the newly obtained summary data were incorporated into the public dashboard guided by information in the static file. Raw data for dashboard available here: <https://github.com/CFSAN-Biostatistics/WW-SC2-variant-estimations>.

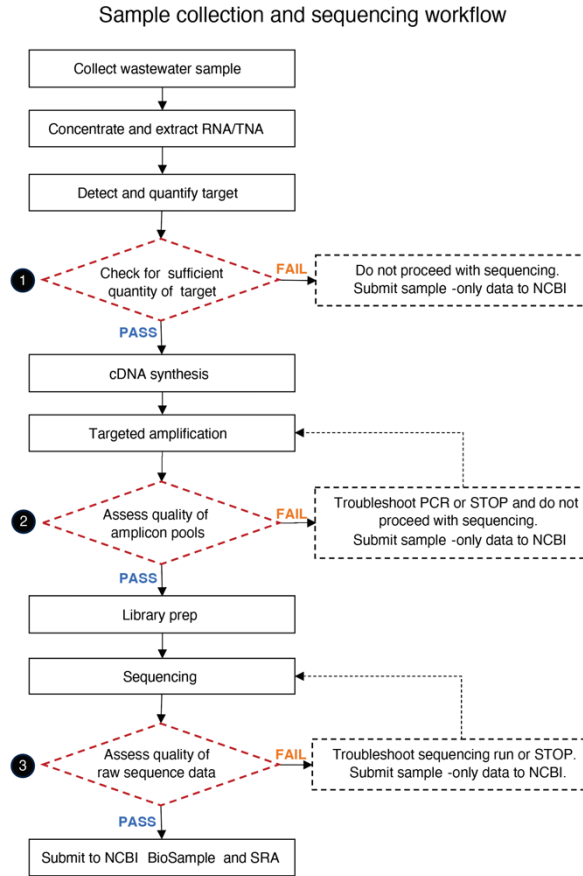


Figure 3. Sample collection and sequencing workflow. SARS-CoV-2 wastewater surveillance sample analysis process and recommended quality control checkpoints used in this project.

QC summary metrics for short-read Illumina data

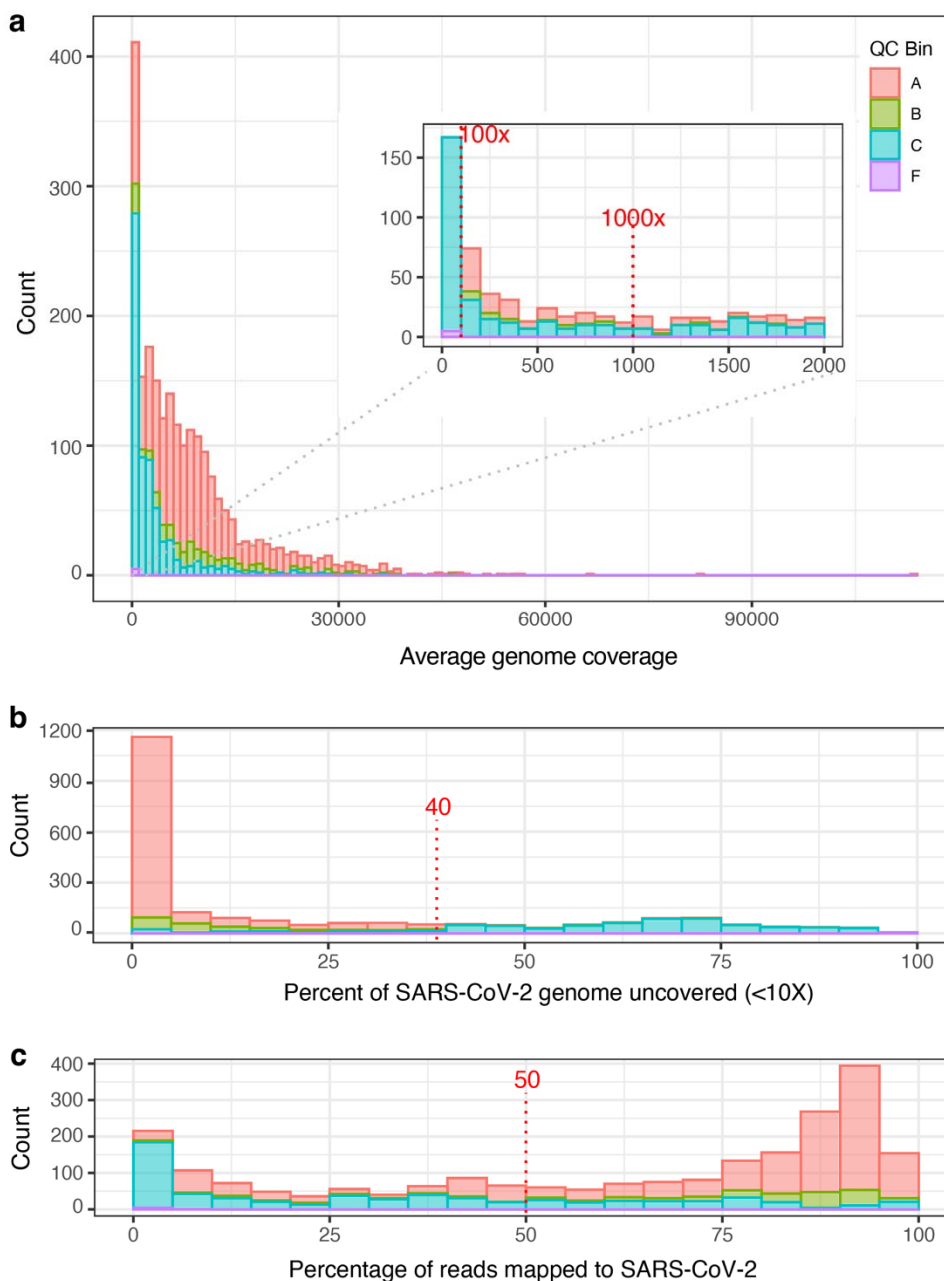


Figure 4. QC summary metrics for short-read Illumina data. Three panels summarize the quality of population-level SARS-CoV-2 sequence data collected and submitted for this project: **a)** Average depth of coverage across the SARS-CoV-2 genome (average coverage), **b)** Percent of the SARS-CoV-2 genome uncovered at <10X, and **c)** Percent of raw sequence reads that aligned to the SARS-CoV-2 genome. Quality control determinations made by the submitter (QC bins A, B, C, or F) are also summarized in each panel.

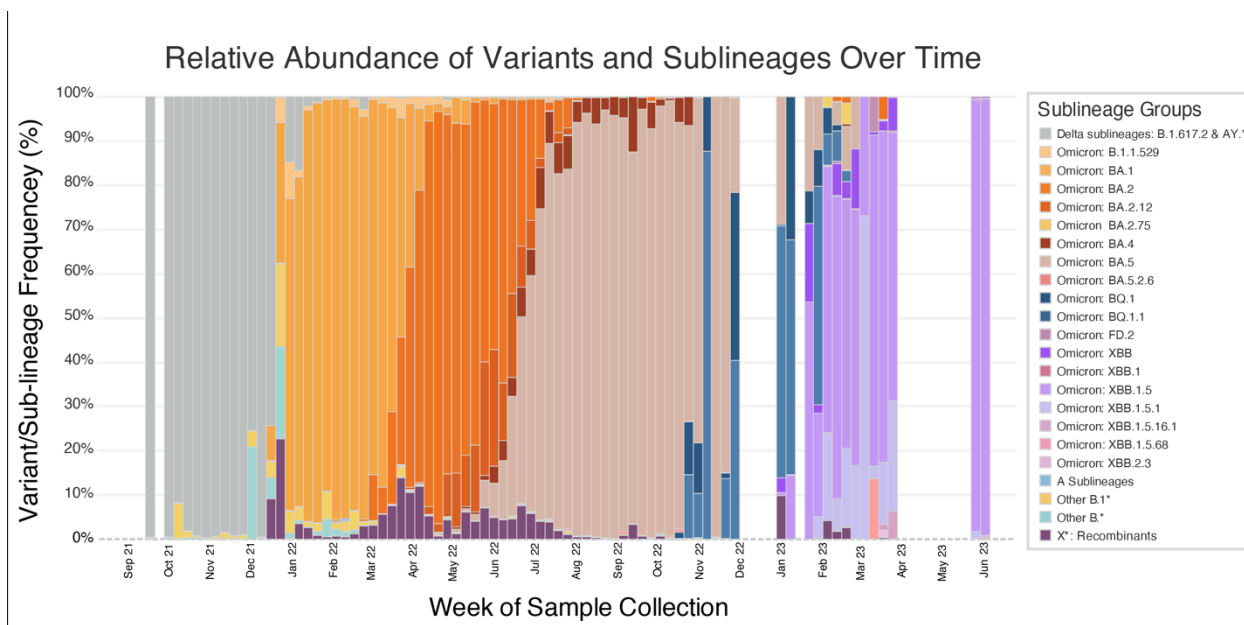


Figure 5. Relative abundances of variants and sublineages over time. Stacked bar chart showing the average variant and sub-lineage proportions for samples collected during that week. For the sake of visibility, only sub-lineages with a relative abundance of $\geq 5\%$ for at least one week are displayed. The rest, regardless of its designated interest to the WHO or CDC, were treated as parts of their parent lineage until a sub-lineage had sufficient relative abundance to meet the $\geq 5\%$ threshold.

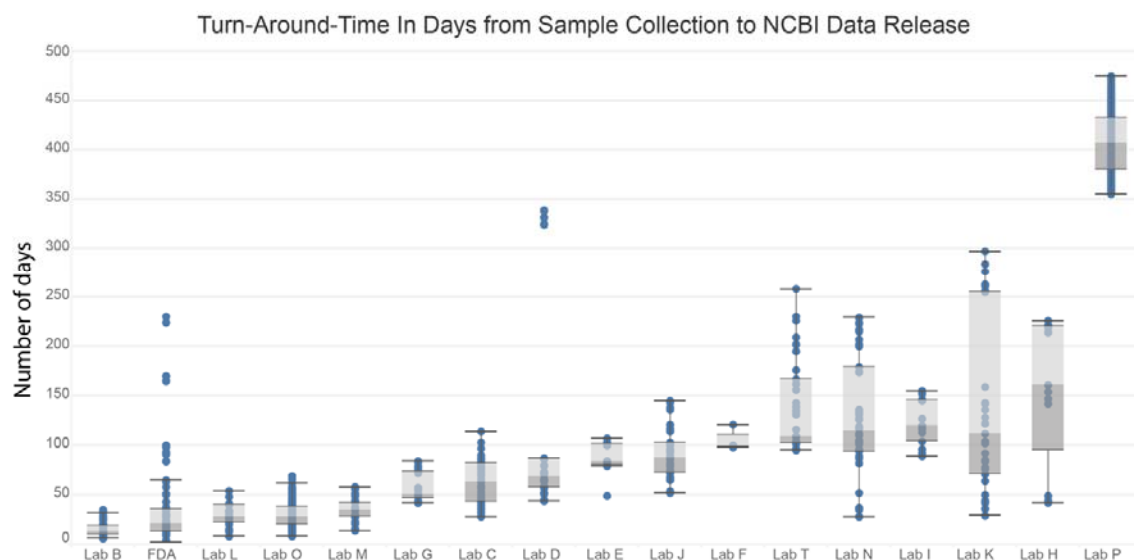


Figure 6. Turnaround Time from Sample Collection to NCBI Data Release. Box and whisker plot showing number of days between sample collection date and NCBI release date for each participating laboratory.