

# 1 **Recreational and occupational physical activity and risk of adverse events** 2 **in truncating *MYBPC3* founder variant carriers**

3  
4 Fahima Hassanzada, MD<sup>a,b</sup>\*, Mark Jansen, MD, PhD<sup>a,b,c</sup>\*, Freyja H.M.van Lint, MD<sup>a,b,d,e\*</sup>,  
5 Laurens P. Bosman, MD, PhD<sup>b,c</sup>, Amand F. Schmidt, PhD<sup>b,c,f</sup>, Dennis Dooijes, PhD<sup>a,b</sup>, Danny  
6 van de Sande, MD, PhD<sup>c</sup>, Bristi Miah, MSc<sup>a</sup>, Saskia N. van der Crabben, MD, PhD<sup>b,e</sup>, Arthur  
7 A.M. Wilde, MD, PhD<sup>b,i</sup>, Ronald H. Lekanne Deprez, MD, PhD<sup>b,e</sup>, Rudolf A. de Boer, MD,  
8 PhD<sup>b,k,l</sup>, Imke Christiaans, MD, PhD<sup>m</sup>, Jan D.H. Jongbloed, PhD<sup>m</sup>, Harald T. Jorstad, MD,  
9 PhD<sup>j</sup>, Folkert W. Asselbergs, MD, PhD<sup>b,i,n</sup>, J. Peter van Tintelen, MD, PhD<sup>a,b,e</sup>, Annette F.  
10 Baas, MD, PhD<sup>a,b</sup>, Anneline S.J.M. te Riele, MD, PhD<sup>b,c</sup>

11 \* These authors contributed equally

## 13 **Affiliations:**

14 <sup>a</sup> Department of Genetics, University Medical Center Utrecht, Utrecht University, Utrecht, the  
15 Netherlands.

16 <sup>b</sup> ‘Member of the European Reference Network for rare, low prevalence and complex diseases  
17 of the heart: ERN GUARD-Heart’ (ERN GUARDHEART; <http://guardheart.ern-net.eu>).

18 <sup>c</sup> Department of Cardiology, University Medical Center Utrecht, Utrecht University, Utrecht,  
19 the Netherlands.

20 <sup>d</sup> Department of Genetics, Radboud University Medical Center, Nijmegen, the Netherlands.

21 <sup>e</sup> Department of Human Genetics, Amsterdam University Medical Center, University of  
22 Amsterdam, the Netherlands.

23 <sup>f</sup> Netherlands Heart Institute, Utrecht, the Netherlands.

24 <sup>g</sup> Institute of Cardiovascular Science, Faculty of Population Health Sciences, University  
25 College London, London, UK.

26 <sup>h</sup> Department of Cardiology, University Medical Center Groningen, University of Groningen,  
27 Groningen, the Netherlands.

28 <sup>i</sup> Department of Cardiology, University Medical Centre Amsterdam, University of  
29 Amsterdam, Amsterdam, the Netherlands; Amsterdam Cardiovascular Sciences, Heart Failure  
30 and Arrhythmias, University Medical Centre Amsterdam, Amsterdam, the Netherlands.

31 <sup>j</sup> Department of Cardiology, Heart Center, Amsterdam UMC, University of Amsterdam,  
32 Amsterdam Movement Sciences, Amsterdam Cardiovascular Sciences, Amsterdam, The

33 **Not certified by peer review** preprint reports new research that has not been certified by peer review and should not be used to guide clinical practice.

1 <sup>k</sup> University Medical Center Groningen, University of Groningen, Department of Cardiology,  
2 Groningen, the Netherlands.

3 <sup>l</sup> Department of Cardiology, Thorax Center, Erasmus University Medical Center, Erasmus  
4 University Rotterdam, Rotterdam, the Netherlands.

5 <sup>m</sup> Department of Genetics, University Medical Centre Groningen, University of Groningen,  
6 Groningen, the Netherlands.

7 <sup>n</sup> Health Data Research UK and Institute of Health Informatics, University College London,  
8 London, United Kingdom.

9

10 **Short title:** Exercise in *MYBPC3* founder variants carriers

11

12 **Address for correspondence:**

13 Fahima Hassanzada

14 Department of Genetics, University Medical Center Utrecht, Heidelberglaan 100, 3584 CX

15 Utrecht, the Netherlands

16 Telephone number: +31-650124657

17 E-mail: f.hassanzada-4@umcutrecht.nl

18

19 **Total word count:** 5568

20

1 **Abstract**

2 **Background:** *MYBPC3* founder variants cause hypertrophic cardiomyopathy (HCM) leading  
3 to heart failure (HF) and malignant ventricular arrhythmias (MVA). Exercise is typically  
4 regarded a risk factor for disease expression, although evidence is conflicting. Stratifying by  
5 type of exercise may discriminate low- from high-risk activities in these patients.

6 **Objective(s):** Evaluate effects of exercise, stratified by high-static and high-dynamic  
7 component, on risk of major cardiomyopathy-related events (MCE) and cardiomyopathy  
8 penetrance among *MYBPC3* founder variant carriers.

9 **Methods:** We interviewed 188 carriers (57% male, 43.4±14.8 years) on exercise participation  
10 since age ten. Exercise was quantified as metabolic equivalent task (MET)-hours/week before  
11 presentation. MCE was defined as a composite of MVA (sustained ventricular  
12 tachycardia/fibrillation), HF (HF hospitalizations or transplantation), and septal reduction  
13 therapy. Static and dynamic exercise were defined per Bethesda classification. Associations of  
14 exercise with MCE and cardiomyopathy penetrance were adjusted for sex and assessed using  
15 Cox regression.

16 **Results:** Overall, 40 (21%) subjects experienced MCE and 139 (74%) were diagnosed with  
17 cardiomyopathy. No association was found for overall physical activity and high-static  
18 activity with MCE (p=0.900 overall; p=0.274 high-static) or cardiomyopathy penetrance  
19 (p=0.787 overall; p=0.774 high-static). In contrast, high-dynamic activity was associated with  
20 MVA (dichotomized at 75<sup>th</sup> percentile: adjusted hazard ratio 2.70, 95% confidence interval  
21 1.01-7.24, p=0.049).

22 **Conclusions:** Overall exercise participation does not generally increase the risk of adverse  
23 events among *MYBPC3* founder variant carriers. Nonetheless, an increased risk of MVA was  
24 observed among those engaged in the highest quartile of high-dynamic-sports, suggesting that  
25 high-level high-intensity exercise activities should be entertained with caution.

1 **Keywords:** HCM, high dynamic exercise, adverse events, ventricular arrhythmia, *MYBPC3*

## 1 **Abbreviations and Acronyms**

- 2 aHR = adjusted hazard ratio
- 3 HCM = hypertrophic cardiomyopathy
- 4 HF = heart failure
- 5 ICD = implantable cardioverter-defibrillator
- 6 LV = left ventricular
- 7 MCE = major cardiomyopathy-related events
- 8 MET = metabolic equivalent of task
- 9 MVA = malignant ventricular arrhythmia
- 10 SRT = septal reduction therapy
- 11 *MYBPC3* = myosin binding protein C3 gene

## 1 **Introduction**

2 Hypertrophic cardiomyopathy (HCM) is a relatively common inherited heart disease with an  
3 estimated prevalence of 1:500.<sup>1</sup> It is characterized by left ventricular hypertrophy which is not  
4 explained by abnormal loading conditions.<sup>2</sup> Clinical presentation is heterogeneous with many  
5 patients remaining mildly symptomatic or asymptomatic, while others present with left  
6 ventricular (LV) outflow tract obstruction requiring septal reduction therapy (SRT), malignant  
7 ventricular arrhythmias (MVA) or debilitating heart failure (HF). This heterogeneity suggests  
8 an influential role of environmental factors.<sup>3</sup>

9 HCM is predominantly caused by variants in genes encoding sarcomeric proteins. In  
10 approximately 50% of patients, a likely pathogenic or pathogenic variant is found.<sup>4,5</sup> Variants  
11 are most frequently found in the *MYBPC3* gene, encoding cardiac myosin-binding protein C,  
12 an important regulator of cardiac contractility.<sup>6</sup> In the Netherlands, approximately 20% of  
13 HCM patients carry a truncating *MYBPC3* founder variant.<sup>7</sup> These variants lead to truncation  
14 of *MYBPC3* mRNA and subsequent haploinsufficiency of cardiac myosin-binding protein C,  
15 which has been shown to impact prognosis similar to other truncating *MYBPC3* variants.<sup>8,9</sup>

16 As HCM has frequently been reported in young athletes suffering sudden cardiac  
17 death, guidelines have traditionally discouraged competitive exercise in HCM patients.<sup>10-12</sup>  
18 Exercise is hypothesized to contribute to sudden cardiac death in HCM by several  
19 mechanisms, including increasing LV wall thickness and outflow tract obstruction, inducing  
20 metabolic disturbances or ischemia, as well as pro-arrhythmic effects by adrenergic  
21 stimulation and/or fibrosis formation.<sup>12,13</sup> However, several studies investigating effects of  
22 exercise in HCM have not reported negative effects, with a single study even showing a  
23 protective effect on all-cause and cardiovascular mortality.<sup>14-16</sup> Of note, none of these studies  
24 assessed specific types of exercise, such as a distinction between static and dynamic

1 properties.<sup>15</sup> High-static exercise, for example, may theoretically be more likely to contribute  
2 to hypertrophic remodeling, compared with high-dynamic exercise.<sup>17,18</sup>

3 Therefore, we evaluated the effect of recreational and occupational physical activity  
4 on risk of major cardiomyopathy-related events (MCE) and cardiomyopathy penetrance in  
5 carriers of truncating *MYBPC3* founder variants, stratified by high-static and high-dynamic  
6 properties.

7

## 8 **Methods**

### 9 **Patient population**

10 This study is embedded in the BIO For CARE (Identification of BIOmarkers of HCM  
11 development and progression in Dutch *MYBPC3* Founder variant CARriers) and UNRAVEL  
12 ([www.unravelrdp.nl](http://www.unravelrdp.nl)) registries.<sup>19,20</sup> Carriers of the c.2373dupG, c.2827C>T,  
13 c.2864\_2865delCT and c.3776delA *MYBPC3* founder variants were recruited from three  
14 Dutch university medical centers (Utrecht, Groningen and Amsterdam). The Institutional  
15 Review Board, Medical Ethics Committee of UMC Utrecht gave ethical approval for this  
16 work, with local approval at the Amsterdam UMC and UMC Groningen. All individuals  
17 provided written informed consent.

18

### 19 **Clinical data and outcomes**

20 Clinical data were obtained from electronic health records and collected using pre-specified  
21 electronic case report forms, as previously described.<sup>19</sup> Collected data included sex, date  
22 of birth, date and type of clinical presentation, hospitalization records, and results of (non-)  
23 invasive studies (12-lead electrocardiogram [ECG], 2-dimensional transthoracic  
24 echocardiography, and cardiac magnetic resonance imaging). Clinical presentation was

1 defined as the first medical visit for cardiac screening and/or symptoms related to *MYBPC3* in  
2 one of the enrolling centers.

3 The primary outcome was a composite of MCE, constituting of MVA (defined as  
4 sustained ventricular tachycardia, defined as  $\geq 30$  seconds at  $\geq 100$  beats per minute and  
5 resulting in hemodynamic instability or requiring termination, aborted cardiac arrest or  
6 sudden cardiac death), HF events (defined as HF hospitalization, ventricular assist device  
7 implantation, heart transplantation or HF-related mortality), and SRT (defined as septal  
8 myectomy or alcohol septal ablation).

9 Secondary outcomes were MVA, HF events, and SRT, analyzed as separate outcomes.  
10 In addition, we evaluated the development of an overt cardiomyopathy diagnosis as secondary  
11 outcome measure. For the latter, HCM was defined as a maximum left ventricular wall  
12 thickness of  $\geq 13$  mm not explained by abnormal loading conditions;<sup>11</sup> dilated cardiomyopathy  
13 (DCM) as dilation of left ventricle with a left ventricular ejection fraction (LVEF)  $< 45\%$ ;<sup>21</sup>  
14 Non-compaction cardiomyopathy (NCCM) as left ventricular non-compaction fulfilling the  
15 Jenni or Petersen criteria and a LVEF  $< 50\%$ ,<sup>22,23</sup> all not explained by abnormal loading  
16 conditions or coronary artery disease. Individuals with LVEF  $< 50\%$  but without other criteria  
17 for a specific cardiomyopathy diagnosis were classified as cardiomyopathy not otherwise  
18 specified (CMP-NOS).

19

## 20 **Physical activity interviews**

21 Structured telephone interviews were conducted by three research assistants and one  
22 physician. Details of the exercise interview have been described previously.<sup>24,25</sup> In short,  
23 physical activity was documented since age 10 years onwards using a pre-defined data  
24 collection sheet for all recreational and occupational physical activity. For each entry, the  
25 intensity (light, moderate or vigorous) and duration of physical activity were registered.



1 Subsequently, the corresponding metabolic equivalents (METs) were assigned using the  
2 Ainsworth et al. compendium of physical activities.<sup>26</sup>

3 We assessed the impact of physical activity from age 10 years until presentation by  
4 stratifying in: (i) overall physical activity; and (ii) physical activity during high-static and  
5 high-dynamic sports. Overall physical activity was quantified as the average MET-  
6 hours/week spent on any physical activity and analyzed both in quartiles (based on the data)  
7 and based on increments of 7.5 MET-hours/week (which is the American Heart Association's  
8 recommended minimum physical activity) to compare physical activity to standardized  
9 recommendations. High-static and high-dynamic sports were classified according to the 36<sup>th</sup>  
10 Bethesda Conference Classification of Sports (Supplemental Figure 1) and quantified as  
11 MET-hours/week spent on this specific activity.<sup>17,27</sup> In this study, sport activities in categories  
12 IIIA, IIIB and IIIC were classified as high-static; and sport activities in categories IC, IIC and  
13 IIIC as high-dynamic. Of note, class IIIC overlaps in both high-static and high-dynamic  
14 categories. As high-static and high-dynamic activity categories were analyzed separately, the  
15 use of class IIIC in both categories was statistically permitted.

16

### 17 **Statistical analysis**

18 Analyses were performed in R software (version 4.2.2). Continuous variables were expressed  
19 as mean  $\pm$  standard deviation or median [interquartile ranges (IQR)] as appropriate and  
20 compared using independent samples t-tests or Mann-Whitney U tests, respectively.

21 Categorical variables were presented as frequencies (percentage) and compared using the chi-  
22 square or Fisher's exact test. Physical activity before and after presentation were compared  
23 using the Wilcoxon signed rank test.

24 Cumulative freedom from the composite outcome was determined by the Kaplan-  
25 Meier method and Cox-proportional hazard model. Follow-up was considered to start at first

1 clinical presentation and end at the date of reaching the endpoint or censoring (i.e. death from  
2 any other cause or most recent follow-up at which the endpoint could be ascertained).  
3 Schoenfeld residuals test was used to check the proportional hazard assumption. The linearity  
4 assumption in the Cox model was assessed using Martingale residuals. In the absence of  
5 established cut-off points for sport class-specific activities, medians and 75<sup>th</sup> percentile were  
6 used to dichotomize activities in case of significant non-linearity.<sup>28</sup> Multivariable Cox  
7 regression was performed to correct for potential confounding from sex. Sensitivity analyses  
8 were performed by restricting the analyses to patients diagnosed with a cardiomyopathy  
9 diagnosis at first presentation. P-values <0.05 were considered statistically significant  
10 throughout.

11

## 12 **Results**

### 13 **Study population**

14 We included 188 carriers of truncating *MYBPC3* founder variants. Their clinical  
15 characteristics are provided in Table 1. Overall, 108 (57%) were male, with a mean age  
16 43.4±14.8 years at first presentation. Almost half (n=80, 43%) of study subjects were  
17 probands. Maximum wall thickness was 16±6 mm with a mean LV ejection fraction of 59%  
18 ±10 and a LV end-diastolic diameter of 46±6 mm. At first clinical evaluation, 104 (55%) had  
19 a diagnosis of cardiomyopathy, most commonly HCM (n=98, 52% of overall population)  
20 (Supplemental Table 1).

21

### 22 **Physical activity history**

23 Before first medical contact, study participants were physically active for a median of 56 [26-  
24 111] MET-hours/week, of which 15 [6-29] MET-hours were spent on recreational activity,  
25 and 34 [4-84] MET-hours on occupational activity. High-dynamic activity was more

1 frequently entertained (10 [3-23] MET-hours/week) than high-static activity (0.1 [0-2] MET-  
2 hours/week).

3 After presentation, median activity decreased to 38 [14-106] MET-hours/week  
4 ( $p=0.021$  compared to presentation). This was driven by a drastic decrease in occupational  
5 activities to 11 [0-73] MET-hours/week ( $p=0.022$  compared to presentation), whereas  
6 recreational activities remained unchanged 14 [5-31] MET-hours/week ( $p=0.435$  compared to  
7 presentation). While there was no significant change observed in high-static activities  
8 between presentation and follow-up ( $p=0.324$ ), a reduction was noted in high-dynamic  
9 activities,  $p<0.001$  compared to presentation. Boxplots of physical activity before and after  
10 presentation are provided in Supplemental Figure 2.

11

## 12 **Major Cardiomyopathy-related Events**

13 In total, the primary endpoint (i.e. MCE) occurred in 40 (21%) individuals. This included 20  
14 (11%) MVA events, 13 (7%) HF events, and 15 (8%) SRT events. Combinations of events  
15 occurred in eight (4%) individuals (three subjects with both MVA and HF, two subjects with  
16 both HF and SRT, and three subjects with MVA and SRT). None of the study subjects  
17 presented with MCE and median time to first MCE was 6.6 [2.2-11.9] years after  
18 presentation. There were no statistically significant differences in age ( $p=0.816$ ) and sex  
19 ( $p=0.351$ ) between those with and without MCE. In contrast, LV hypertrophy (21 vs. 14 mm,  
20  $p<0.001$ ) and LV ejection fraction (55 vs. 60%,  $p=0.011$ ) were significantly different in those  
21 with vs. without MCE, respectively.

22 Figure 1A shows the effect of overall physical activity on the primary endpoint. As  
23 can be appreciated, no difference was observed for MCE occurrence between quartiles of  
24 overall physical activity measured in MET-hours/week ( $p=0.374$ ).

1           Figure 1B and C show the effect of high-dynamic activity and high-static activity on  
2 MCE occurrence, respectively. As shown, there were no significant differences between  
3 quartiles of either activity category for MCE ( $p=0.879$  for high-dynamic activity; and  $p=0.125$   
4 for high-static activity).

## 6 **Secondary Endpoints**

### 7 Malignant ventricular arrhythmias:

8 None of the individuals had experienced MVA at presentation. A total of 20 (11%) subjects  
9 experienced MVA by last follow-up, on average 6.8 [3.3-12.6] years after presentation. No  
10 differences were observed in age ( $p=0.998$ ) or sex ( $p=0.063$ ) between those with and without  
11 MVA.

12           Supplemental Figure 3A show the effect of overall physical activity and 3C the effect  
13 of high-static activity on MVA occurrence, respectively. As shown, there were no significant  
14 differences between quartiles of either activity category for MVA ( $p=0.130$  for overall  
15 physical activity; and  $p=0.325$  for high-static activity). As can be appreciated in Supplemental  
16 Figure 3B, an increased risk of MVA was observed among those engaged in the highest  
17 quartile of high-dynamic activities ( $p=0.041$  compared to the lowest quartile of high-dynamic  
18 activities).

19           Assessing the impact of high-dynamic activity on the risk of MVA, a violation of  
20 linearity assumption of Cox proportional hazard was observed hence values of high-dynamic  
21 activity for this endpoint were dichotomized by its 75th percentile. As shown in Figure 2,  
22 high-dynamic exercise was associated with MVA when dichotomized by its 75th percentile  
23 (23 MET-hours/week, aHR 2.70, 95% CI 1.01-7.24,  $p=0.049$ ).

### 24 Heart failure events:

1 None of the individuals had experienced HF events at presentation. A total of 13 (7%)  
2 subjects experienced HF events by last follow-up, on average 7.1 (3.2-13.9) years after  
3 presentation. No differences were observed in age ( $p=0.618$ ) or sex ( $p=0.581$ ) among those  
4 with and without HF events.

5 Supplemental Figure 4A shows the effect of overall physical activity on HF events. As  
6 can be appreciated, no difference was observed for HF occurrence between quartiles of  
7 overall physical activity measured in MET-hours/week ( $p=0.954$ ).

8 Supplemental Figure 4B and C show the effect of high-dynamic activity and high-  
9 static activity on HF occurrence, respectively. There were no significant differences between  
10 quartiles of either activity category for HF events ( $p=0.490$  for high-dynamic activity; and  
11  $p=0.834$  for high-static activity).

12

### 13 Septal reduction therapy

14 None of the individuals had experienced SRT at presentation. A total of 15 (8%) subjects  
15 experienced SRT by last follow-up, with a median 7.1 [3.3-13.9] years after presentation. No  
16 differences were observed in age ( $p=0.525$ ) or sex ( $p=0.964$ ) among those with and without  
17 SRT.

18 Supplemental Figure 5A shows the effect of overall physical activity on SRT. No  
19 difference was observed for SRT between quartiles of overall physical activity measured in  
20 MET-hours/week ( $p=0.539$ ).

21 As shown in Supplemental Figure 5B (high-dynamic activity) and C (high-static  
22 activity), there were no significant differences between quartiles of either activity category for  
23 SRT ( $p=0.473$  for high-dynamic activity; and  $p=0.072$  for high-static activity).

24

### 25 Cardiomyopathy penetrance

1 A total of 104 (55%) subjects were diagnosed with cardiomyopathy (98 HCM, 3 DCM  
2 [possibly HCM in the “burned-out phase”], 2 CMP-NOS and 1 NCCM) at first clinical  
3 evaluation. During a median 7.4 [3.9-14.6] years of follow-up, 35 (19%) additional subjects  
4 developed cardiomyopathy, all of whom with an HCM diagnosis. This culminated to a total of  
5 139 (74%) patients with cardiomyopathy by last follow-up.

6 Figure 3A shows the effect of overall physical activity on cardiomyopathy penetrance.  
7 As can be appreciated, no difference was observed in cardiomyopathy penetrance between  
8 quartiles of overall physical activity measured in MET-hours/week ( $p=0.208$ ).

9 Figure 3B and C show the effect of high-dynamic activity and high-static activity on  
10 cardiomyopathy penetrance, respectively. No significant differences between quartiles of  
11 either activity category for cardiomyopathy penetrance were identified ( $p=0.701$  for high-  
12 dynamic activity; and  $p=0.718$  for high-static activity).

13

#### 14 **Sensitivity analysis**

15 Our study population included a sizable number of subjects without phenotypic expression,  
16 which may influence our ability to pick up significant differences among groups. We  
17 therefore repeated the analyses solely in individuals with a cardiomyopathy diagnosis as  
18 sensitivity analysis. Clinical characteristics of subjects with a cardiomyopathy diagnosis are  
19 provided in Supplemental Table 2. In Supplemental Tables 3 and 4, it is shown that results  
20 were identical to the main results.

21

#### 22 **Discussion**

23 In this study, we evaluated the effects of physical activity stratified by type of activity on  
24 clinical outcomes and cardiomyopathy penetrance in 188 carriers of truncating *MYBPC3*  
25 founder variants. We assessed overall physical activity both in quartiles based on our data,

1 and based on the American Heart Association’s recommended minimum for healthy adults  
2 (7.5 MET-hours/week). High-dynamic and high-static activities were classified as per  
3 Bethesda classification and evaluated in quartiles since there is no recommended cutoff for  
4 these types of activity.

5 Our findings revealed that neither overall physical activity nor high-static exercise  
6 increased the risk of MCE and cardiomyopathy penetrance. In contrast, when analyzing the  
7 combined endpoint by its separate components, we observed that high-dynamic exercise  
8 increased the risk of MVA when dichotomized by its 75<sup>th</sup> percentile, which was equivalent to  
9 more than 23 MET-hours/week. For example, this is reached when an individual spends 50  
10 minutes on vigorous swimming (9.8 METs/hour) for 3 days per week, or participates in 50  
11 minutes of vigorous running (10 METs/hour) 3 days per week, or in 1.5 hours of vigorous  
12 soccer (10 METs/hour) 2 days per week.

13

#### 14 **Physical activity and risk of MCE and cardiomyopathy penetrance**

15 Physical activity has been traditionally considered as a risk factor for patients with HCM,  
16 which has resulted in conservative exercise recommendations. However, several recent  
17 studies have shown neutral or even beneficial effects of exercise in HCM. Saberi *et al.*  
18 assessed the impact of moderate-intensity exercise compared to usual activity in a preliminary  
19 randomized controlled trial including 136 patients with HCM. Not only did they not observe  
20 any MVA in either group, but they additionally observed a small but statistically significant  
21 increase in peak oxygen consumption in the moderate-intensity exercise group.<sup>29</sup>  
22 Consistently, Klempfner *et al.* did not observe adverse events and showed increased  
23 functional capacity in a single-arm trial including 20 patients with symptomatic HCM who  
24 underwent a cardiac rehabilitation exercise program.<sup>30</sup> Leveraging a nationwide population-  
25 based cohort, Kwon *et al.* observed decreases in all-cause and cardiovascular mortality for

1 increasing tertiles of physical activity among 7666 patients with HCM during more than 5  
2 years of follow-up.<sup>16</sup> Likewise, in a retrospective, cross-sectional study, Andreassen et al.  
3 observed a positive association between exercise training during childhood and LV diastolic  
4 function in 121 patients with HCM and 66 carriers of HCM-associated genetic variants.<sup>31</sup>  
5 Some authors have suggested that exercise restrictions have negative psychological effects in  
6 athletic patients with HCM, and may result in increased risks of cardiovascular disease  
7 resulting from a sedentary lifestyle.<sup>32,33</sup> In sharp contrast to the abovementioned reassuring  
8 findings, however, in a small series Aengevaeren et al. found that HCM patients with  
9 increasing tertiles of physical activity were younger at the time of diagnosis and more  
10 frequently had a history of non-sustained ventricular tachycardia.<sup>15</sup>

11 A recent large prospective study shed light on this matter. In this study, Lampert et al.  
12 did not observe a higher rate of death or life-threatening arrhythmias among 1660 individuals  
13 with HCM exercising vigorously than those participating in moderate exercise.<sup>34</sup> Of note, the  
14 authors used a cut-off of 360 MET-hours/year to define vigorous exercise, which is equivalent  
15 to approximately 7 MET-hours/week. This aligns closely with the AHA's minimum  
16 recommended exercise level of 7.5 MET-hours/week for healthy adults. For example, this is  
17 reached when an individual spends one hour on vigorous bicycling (7.8 METs/hour) 1 day per  
18 week. This is a much lower cut-off than the 23 MET-hours/week that we used for the 75<sup>th</sup>  
19 percentile of high-dynamic exercise, possibly explaining the observed difference between our  
20 studies. In line with the results of Lampert et al.,<sup>34</sup> we found that overall physical activity and  
21 high-static exercise did not significantly increase the risk for any of our outcomes in carriers  
22 of truncating *MYBPC3* variants. Our study thus confirms and extends prior research, since our  
23 detailed data collection also allowed for sub-analyses stratified by specific types of exercise  
24 (i.e. by dynamic or static component), which may be more suitable to uncover possibly  
25 detrimental effects on clinical course in this patient population. Regardless of the available



1 evidence, future prospective studies will be pivotal to better understand the interaction  
2 between exercise, HCM-related outcomes and general health benefits, in order to improve  
3 exercise recommendations for this generally young patient population.  
4

### 5 **High-dynamic exercise and MVA**

6 To the best of our knowledge, our study was the first to specifically assess high-dynamic and  
7 high-static exercise as potential predictors of cardiomyopathy-related outcomes. While we did  
8 not find an association between high-static exercise with any of our study outcomes, our data  
9 shows that those who participated in the highest quartile of high-dynamic exercise had  
10 increased risk of MVA suggesting that these activities should be entertained with caution. The  
11 exact mechanism underlying the association of high-dynamic exercise and MVA in these  
12 patients is not fully understood. Previous studies have proposed several factors such as  
13 heterogenous myocardial blood flow, myocardial disarray, associated abnormalities of the  
14 vascular response to exercise, electrolyte and sympathetic-vagal imbalance, and exercise-  
15 induced metabolic acidosis.<sup>13,35-38</sup> More research in (pre-)clinical disease models may shed  
16 further light on this issue.  
17

### 18 **High-static exercise and disease course**

19 Our results showed that high-static exercise did not increase the risk of MCE and  
20 cardiomyopathy penetrance among *MYBPC3*-founder variant carriers. Whether high-static  
21 exercise can be considered safe, or whether there could be an effect of more intensive high-  
22 static exercise on disease course, cannot be determined from our data. Furthermore, caution is  
23 needed in those patients with LV outflow tract obstruction at rest or during exercise.<sup>39-41</sup> Of  
24 note, out of 26 individuals with LV outflow tract obstruction in our study, one was engaged in  
25 frequent high-static exercise (>2 MET-hours/week), who experienced MCE. Therefore, we

1 emphasize the importance of shared decision making for participation in more intensive static  
2 and also dynamic exercise. Future prospective studies are required to personalize exercise  
3 recommendations and to determine the optimal exercise threshold that is safe in this patient  
4 population.

## 6 **Limitations and Clinical Implications**

7 To our knowledge, this is the first and largest interview-based exercise study in a genetically  
8 homogenous HCM population. Genotype-driven inclusion allowed us to assess  
9 cardiomyopathy penetrance as an outcome. Additionally, the design of the interview allowed  
10 us to assess specific categories of physical activity. This provides a foundation for future  
11 prospective studies to evaluate the effect of specific types of exercise on the disease course of  
12 patients with HCM and may contribute to finetuning exercise recommendations for these  
13 patients, balancing potential benefits of exercise with exercise-related risks.

14 Some limitations warrant consideration. The retrospective nature of this study results  
15 in ascertainment bias and missing data. Recall bias and social desirability bias may have  
16 resulted in over- or underreporting of physical activities. As carriers were required to be alive  
17 for the exercise interview, severely affected carriers that passed away before initiation of this  
18 study could not be included. Restricting inclusion to truncating *MYBPC3* variants may limit  
19 generalizability to the wider HCM population. Furthermore, the intensity of physical activity  
20 was only taken into account in the calculation of the number of MET-hours/week. However,  
21 different intensities of exercise could contribute to hypertrophic remodeling to differing  
22 degrees, e.g. vigorous exercise may be more detrimental than mild to moderate intensity  
23 exercise. Despite being the largest interview-based study in a genetically homogenous HCM  
24 population, sample size was still not sufficient to control for additional potential confounding  
25 variables such as hypertension and body mass index. Additionally, we did not inquire about

1 the use of anabolic steroids or other exercise-enhancing drugs and supplements, which could  
2 modify or confound the apparent effects of exercise in some carriers. Finally, in the absence  
3 of established cut-off values for high-static and high-dynamic exercise, we used data-driven  
4 cut-off values, which limit direct interpretation and may result in overfitting. Taken together,  
5 these limitations emphasize the importance of prospective validation of our results.

6

## 7 **Conclusions**

8 In truncating *MYBPC3* founder variant carriers, overall physical activity and high-static  
9 exercise are not associated with an increased risk of MCE and cardiomyopathy penetrance.  
10 However, those who participated in the highest quartile of high-dynamic exercise had  
11 increased risk of MVA, suggesting that these activities should be entertained with caution.  
12 Taken together, these findings may contribute to improving exercise recommendations in  
13 HCM patients. We envision a more individualized approach and support the restrictions of  
14 very frequent high-intensity exercise in HCM patients. Future studies are needed to  
15 prospectively validate these findings.

## 1 **Clinical perspectives**

2 Competency in medical knowledge: The impact of different types of exercise on the risk of  
3 major cardiomyopathy-related events and cardiomyopathy penetrance in truncating *MYBPC3*  
4 founder variant carriers is unknown. We found that only those who participated in the highest  
5 quartile of high-dynamic exercise had increased risk of malignant ventricular arrhythmias; all  
6 other types of exercise did not result in increased risk of major cardiomyopathy-related events  
7 or cardiomyopathy penetrance. This suggests that while most exercise may be considered  
8 safe, very frequent high-dynamic exercise should be entertained with caution.

9 Translational outlook: Further prospective research is necessary to validate these findings and  
10 determine safe thresholds and/or intensities of high-dynamic and high-static exercise for  
11 patients with cardiomyopathy, specifically HCM and carriers of pathogenic genetic variants.

## 1 **Acknowledgements**

2 We thank all study participants who made this study possible.

3

## 4 **Sources of funding**

5 This work was supported by the Netherlands Cardiovascular Research Initiative with the  
6 support of the Dutch Heart Foundation (CVON2014-40 DOSIS, Dutch Cardiovascular  
7 Alliance 2020B005 DoubleDose to A.F.B, F.W.A., J.P.v.T., M.M. and R.A.d.B.; CVON2015-  
8 12 e-Detect to F.W.A, J.P.v.T. A.S.J.M.t.R. and I.C.), the Dutch Heart Foundation (Dekker  
9 2015T041 to A.F.B. and M.J), ZONMw Off Road 2021 to ASJMtR, European Research  
10 Council HORIZON IMPACT (grant no. #101115536 to A.S.J.M.t.R.), University College  
11 London Hospitals National Institute for Health and Care Research Biomedical Research  
12 Centre (to F.W.A.), and British Heart Foundation (PG/18/5033837, PG/22/10989 and  
13 University College London/British Heart Foundation Research Accelerator AA/18/6/34223 to  
14 A.F.S.). Dr. de Boer is supported by the Netherlands Heart Foundation (grants 2017-21; 2017-  
15 11; 2018-30;), by the leDucq Foundation (Cure-PLaN), and by the European Research  
16 Council (ERC CoG 818715).

17

## 18 **Disclosures**

19 Dr. De Boer received research grants and/or fees from AstraZeneca, Abbott, Boehringer  
20 Ingelheim, Cardior Pharmaceuticals GmbH, Ionis Pharmaceuticals, Inc., Novo Nordisk, and  
21 Roche; and has had speaker engagements with Abbott, AstraZeneca, Bayer, Bristol Myers  
22 Squibb, Novartis, and Roche.

## 1 **References**

- 2 1. Semsarian C, Ingles J, Maron MS, Maron BJ. New perspectives on the prevalence of  
3 hypertrophic cardiomyopathy. *J Am Coll Cardiol*. 2015;65:1249-1254. doi:  
4 10.1016/j.jacc.2015.01.019
- 5 2. Arbelo E, Protonotarios A, Gimeno JR, Arbustini E, Barriales-Villa R, Basso C,  
6 Bezzina CR, Biagini E, Blom NA, de Boer RA, et al. 2023 ESC Guidelines for the  
7 management of cardiomyopathies. *Eur Heart J*. 2023;44:3503-3626. doi:  
8 10.1093/eurheartj/ehad194
- 9 3. Repetti GG, Kim Y, Pereira AC, Ingles J, Russell MW, Lakdawala NK, Ho CY, Day  
10 S, Semsarian C, McDonough B, et al. Discordant clinical features of identical  
11 hypertrophic cardiomyopathy twins. *Proc Natl Acad Sci U S A*. 2021;118. doi:  
12 10.1073/pnas.2021717118
- 13 4. Maron BJ, Maron MS, Semsarian C. Genetics of hypertrophic cardiomyopathy after  
14 20 years: clinical perspectives. *J Am Coll Cardiol*. 2012;60:705-715. doi:  
15 10.1016/j.jacc.2012.02.068
- 16 5. Jansweijer JA, van Spaendonck-Zwarts KY, Tanck MWT, van Tintelen JP,  
17 Christiaans I, van der Smagt J, Vermeer A, Bos JM, Moss AJ, Swan H, et al.  
18 Heritability in genetic heart disease: the role of genetic background. *Open Heart*.  
19 2019;6:e000929. doi: 10.1136/openhrt-2018-000929
- 20 6. Crilley JG, Boehm EA, Blair E, Rajagopalan B, Blamire AM, Styles P, McKenna WJ,  
21 Ostman-Smith I, Clarke K, Watkins H. Hypertrophic cardiomyopathy due to  
22 sarcomeric gene mutations is characterized by impaired energy metabolism  
23 irrespective of the degree of hypertrophy. *J Am Coll Cardiol*. 2003;41:1776-1782. doi:  
24 10.1016/s0735-1097(02)03009-7

- 1 7. Christiaans I, Nannenber EA, Dooijes D, Jongbloed RJ, Michels M, Postema PG,  
2 Majoor-Krakauer D, van den Wijngaard A, Mannens MM, van Tintelen JP, et al.  
3 Founder mutations in hypertrophic cardiomyopathy patients in the Netherlands. *Neth*  
4 *Heart J*. 2010;18:248-254. doi: 10.1007/bf03091771
- 5 8. van Dijk SJ, Dooijes D, dos Remedios C, Michels M, Lamers JM, Winegrad S,  
6 Schlossarek S, Carrier L, ten Cate FJ, Stienen GJ, van der Velden J. Cardiac myosin-  
7 binding protein C mutations and hypertrophic cardiomyopathy: haploinsufficiency,  
8 deranged phosphorylation, and cardiomyocyte dysfunction. *Circulation*.  
9 2009;119:1473-1483. doi: 10.1161/circulationaha.108.838672
- 10 9. Nannenber EA, Michels M, Christiaans I, Majoor-Krakauer D, Hoedemaekers YM,  
11 van Tintelen JP, Lombardi MP, ten Cate FJ, Schinkel AF, Tijssen JG, et al. Mortality  
12 risk of untreated myosin-binding protein C-related hypertrophic cardiomyopathy:  
13 insight into the natural history. *J Am Coll Cardiol*. 2011;58:2406-2414. doi:  
14 10.1016/j.jacc.2011.07.044
- 15 10. Eckart RE, Scoville SL, Campbell CL, Shry EA, Stajduhar KC, Potter RN, Pearse LA,  
16 Virmani R. Sudden death in young adults: a 25-year review of autopsies in military  
17 recruits. *Ann Intern Med*. 2004;141:829-834. doi: 10.7326/0003-4819-141-11-  
18 200412070-00005
- 19 11. Elliott PM, Anastasakis A, Borger MA, Borggrefe M, Cecchi F, Charron P, Hagege  
20 AA, Lafont A, Limongelli G, Mahrholdt H, et al. 2014 ESC Guidelines on diagnosis  
21 and management of hypertrophic cardiomyopathy: the Task Force for the Diagnosis  
22 and Management of Hypertrophic Cardiomyopathy of the European Society of  
23 Cardiology (ESC). *Eur Heart J*. 2014;35:2733-2779. doi: 10.1093/eurheartj/ehu284
- 24 12. Gersh BJ, Maron BJ, Bonow RO, Dearani JA, Fifer MA, Link MS, Naidu SS,  
25 Nishimura RA, Ommen SR, Rakowski H, et al. 2011 ACCF/AHA Guideline for the

- 1           Diagnosis and Treatment of Hypertrophic Cardiomyopathy: a report of the American  
2           College of Cardiology Foundation/American Heart Association Task Force on  
3           Practice Guidelines. Developed in collaboration with the American Association for  
4           Thoracic Surgery, American Society of Echocardiography, American Society of  
5           Nuclear Cardiology, Heart Failure Society of America, Heart Rhythm Society, Society  
6           for Cardiovascular Angiography and Interventions, and Society of Thoracic Surgeons.  
7           *J Am Coll Cardiol.* 2011;58:e212-260. doi: 10.1016/j.jacc.2011.06.011
- 8   13.    Hindieh W, Adler A, Weissler-Snir A, Fourey D, Harris S, Rakowski H. Exercise in  
9           patients with hypertrophic cardiomyopathy: A review of current evidence, national  
10          guideline recommendations and a proposal for a new direction to fitness. *J Sci Med*  
11          *Sport.* 2017;20:333-338. doi: 10.1016/j.jsams.2016.09.007
- 12   14.    Dejgaard LA, Haland TF, Lie OH, Ribe M, Bjune T, Leren IS, Berge KE, Edvardsen  
13          T, Haugaa KH. Vigorous exercise in patients with hypertrophic cardiomyopathy. *Int J*  
14          *Cardiol.* 2018;250:157-163. doi: 10.1016/j.ijcard.2017.07.015
- 15   15.    Aengevaeren VL, Gommans DHF, Dieker HJ, Timmermans J, Verheugt FWA,  
16          Bakker J, Hopman MTE, MJ DEB, Brouwer MA, Thompson PD, et al. Association  
17          between Lifelong Physical Activity and Disease Characteristics in HCM. *Med Sci*  
18          *Sports Exerc.* 2019;51:1995-2002. doi: 10.1249/mss.0000000000002015
- 19   16.    Kwon S, Lee HJ, Han KD, Kim DH, Lee SP, Hwang IC, Yoon Y, Park JB, Lee H,  
20          Kwak S, et al. Association of physical activity with all-cause and cardiovascular  
21          mortality in 7666 adults with hypertrophic cardiomyopathy (HCM): more physical  
22          activity is better. *Br J Sports Med.* 2021;55:1034-1040. doi: 10.1136/bjsports-2020-  
23          101987
- 24   17.    Mitchell JH, Haskell W, Snell P, Van Camp SP. Task Force 8: classification of sports.  
25          *J Am Coll Cardiol.* 2005;45:1364-1367. doi: 10.1016/j.jacc.2005.02.015



- 1 18. Maron BJ. Sudden death in young athletes. *N Engl J Med*. 2003;349:1064-1075. doi:  
2 10.1056/NEJMra022783
- 3 19. Jansen M, Christiaans I, van der Crabben SN, Michels M, Huurman R, Hoedemaekers  
4 YM, Dooijes D, Jongbloed JDH, Boven LG, Lekanne Deprez RH, et al. BIO FOr  
5 CARE: biomarkers of hypertrophic cardiomyopathy development and progression in  
6 carriers of Dutch founder truncating MYBPC3 variants-design and status. *Neth Heart*  
7 *J*. 2021;29:318-329. doi: 10.1007/s12471-021-01539-w
- 8 20. Sammani A, Jansen M, Linschoten M, Bagheri A, de Jonge N, Kirkels H, van Laake  
9 LW, Vink A, van Tintelen JP, Dooijes D, et al. UNRAVEL: big data analytics  
10 research data platform to improve care of patients with cardiomyopathies using routine  
11 electronic health records and standardised biobanking. *Neth Heart J*. 2019;27:426-  
12 434. doi: 10.1007/s12471-019-1288-4
- 13 21. Pinto YM, Elliott PM, Arbustini E, Adler Y, Anastasakis A, Böhm M, Duboc D,  
14 Gimeno J, de Groote P, Imazio M, et al. Proposal for a revised definition of dilated  
15 cardiomyopathy, hypokinetic non-dilated cardiomyopathy, and its implications for  
16 clinical practice: a position statement of the ESC working group on myocardial and  
17 pericardial diseases. *Eur Heart J*. 2016;37:1850-1858. doi: 10.1093/eurheartj/ehv727
- 18 22. Jenni R, Oechslin E, Schneider J, Attenhofer Jost C, Kaufmann PA.  
19 Echocardiographic and pathoanatomical characteristics of isolated left ventricular non-  
20 compaction: a step towards classification as a distinct cardiomyopathy. *Heart*.  
21 2001;86:666-671. doi: 10.1136/heart.86.6.666
- 22 23. Petersen SE, Selvanayagam JB, Wiesmann F, Robson MD, Francis JM, Anderson RH,  
23 Watkins H, Neubauer S. Left ventricular non-compaction: insights from  
24 cardiovascular magnetic resonance imaging. *J Am Coll Cardiol*. 2005;46:101-105.  
25 doi: 10.1016/j.jacc.2005.03.045

- 1 24. James CA, Bhonsale A, Tichnell C, Murray B, Russell SD, Tandri H, Tedford RJ,  
2 Judge DP, Calkins H. Exercise increases age-related penetrance and arrhythmic risk in  
3 arrhythmogenic right ventricular dysplasia/cardiomyopathy-associated desmosomal  
4 mutation carriers. *J Am Coll Cardiol*. 2013;62:1290-1297. doi:  
5 10.1016/j.jacc.2013.06.033
- 6 25. van Lint FHM, Hassanzada F, Verstraelen TE, Wang W, Bosman LP, van der Zwaag  
7 PA, Oomen T, Calkins H, Murray B, Tichnell C, et al. Exercise does not influence  
8 development of phenotype in PLN p.(Arg14del) cardiomyopathy. *Neth Heart J*.  
9 2023;31:291-299. doi: 10.1007/s12471-023-01800-4
- 10 26. Ainsworth BE, Haskell WL, Herrmann SD, Meckes N, Bassett DR, Jr., Tudor-Locke  
11 C, Greer JL, Vezina J, Whitt-Glover MC, Leon AS. 2011 Compendium of Physical  
12 Activities: a second update of codes and MET values. *Med Sci Sports Exerc*.  
13 2011;43:1575-1581. doi: 10.1249/MSS.0b013e31821ece12
- 14 27. Braverman AC, Harris KM, Kovacs RJ, Maron BJ. Eligibility and Disqualification  
15 Recommendations for Competitive Athletes With Cardiovascular Abnormalities: Task  
16 Force 7: Aortic Diseases, Including Marfan Syndrome: A Scientific Statement From  
17 the American Heart Association and American College of Cardiology. *Circulation*.  
18 2015;132:e303-309. doi: 10.1161/cir.0000000000000243
- 19 28. Hothorn T, Lausen B. On the exact distribution of maximally selected rank statistics.  
20 *Computational Statistics & Data Analysis*. 2003;43:121-137. doi: 10.1016/s0167-  
21 9473(02)00225-6
- 22 29. Saberi S, Wheeler M, Bragg-Gresham J, Hornsby W, Agarwal PP, Attili A,  
23 Concannon M, Dries AM, Shmargad Y, Salisbury H, et al. Effect of Moderate-  
24 Intensity Exercise Training on Peak Oxygen Consumption in Patients With

- 1 Hypertrophic Cardiomyopathy: A Randomized Clinical Trial. *Jama*. 2017;317:1349-  
2 1357. doi: 10.1001/jama.2017.2503
- 3 30. Klempfner R, Kamerman T, Schwammenthal E, Nahshon A, Hay I, Goldenberg I,  
4 Dov F, Arad M. Efficacy of exercise training in symptomatic patients with  
5 hypertrophic cardiomyopathy: results of a structured exercise training program in a  
6 cardiac rehabilitation center. *Eur J Prev Cardiol*. 2015;22:13-19. doi:  
7 10.1177/2047487313501277
- 8 31. Andreassen K, Dejgaard LA, Lie Ø, Fink TS, Lunde IG, Edvardsen T, Haugaa KH,  
9 Stokke MK. Exercise training during childhood and adolescence is associated with  
10 favorable diastolic function in hypertrophic cardiomyopathy. *Int J Cardiol*.  
11 2022;364:65-71. doi: 10.1016/j.ijcard.2022.06.042
- 12 32. Luiten RC, Ormond K, Post L, Asif IM, Wheeler MT, Caleshu C. Exercise restrictions  
13 trigger psychological difficulty in active and athletic adults with hypertrophic  
14 cardiomyopathy. *Open Heart*. 2016;3:e000488. doi: 10.1136/openhrt-2016-000488
- 15 33. Reineck E, Rolston B, Bragg-Gresham JL, Salberg L, Baty L, Kumar S, Wheeler MT,  
16 Ashley E, Saberi S, Day SM. Physical activity and other health behaviors in adults  
17 with hypertrophic cardiomyopathy. *Am J Cardiol*. 2013;111:1034-1039. doi:  
18 10.1016/j.amjcard.2012.12.018
- 19 34. Lampert R, Ackerman MJ, Marino BS, Burg M, Ainsworth B, Salberg L, Tome  
20 Esteban MT, Ho CY, Abraham R, Balaji S, et al. Vigorous Exercise in Patients With  
21 Hypertrophic Cardiomyopathy. *JAMA Cardiol*. 2023;8:595-605. doi:  
22 10.1001/jamacardio.2023.1042
- 23 35. Maron MS, Olivotto I, Maron BJ, Prasad SK, Cecchi F, Udelson JE, Camici PG. The  
24 case for myocardial ischemia in hypertrophic cardiomyopathy. *J Am Coll Cardiol*.  
25 2009;54:866-875. doi: 10.1016/j.jacc.2009.04.072

- 1 36. Varnava AM, Elliott PM, Baboonian C, Davison F, Davies MJ, McKenna WJ.  
2 Hypertrophic cardiomyopathy: histopathological features of sudden death in cardiac  
3 troponin T disease. *Circulation*. 2001;104:1380-1384. doi: 10.1161/hc3701.095952
- 4 37. Podrid PJ, Fuchs T, Candinas R. Role of the sympathetic nervous system in the  
5 genesis of ventricular arrhythmia. *Circulation*. 1990;82:1103-1113.
- 6 38. Cserne Szappanos H, Viola HM, Ito DW, Lim S, Mangala M, Holliday M, Barratt  
7 Ross S, Semsarian C, Hill A, Dixon RE, Hool LC. Cytoskeletal disarray increases  
8 arrhythmogenic vulnerability during sympathetic stimulation in a model of  
9 hypertrophic cardiomyopathy. *Sci Rep*. 2023;13:11296. doi: 10.1038/s41598-023-  
10 38296-2
- 11 39. Maron MS, Olivotto I, Zenovich AG, Link MS, Pandian NG, Kuvin JT, Nistri S,  
12 Cecchi F, Udelson JE, Maron BJ. Hypertrophic cardiomyopathy is predominantly a  
13 disease of left ventricular outflow tract obstruction. *Circulation*. 2006;114:2232-2239.  
14 doi: 10.1161/circulationaha.106.644682
- 15 40. Shah JS, Esteban MT, Thaman R, Sharma R, Mist B, Pantazis A, Ward D, Kohli SK,  
16 Page SP, Demetrescu C, et al. Prevalence of exercise-induced left ventricular outflow  
17 tract obstruction in symptomatic patients with non-obstructive hypertrophic  
18 cardiomyopathy. *Heart*. 2008;94:1288-1294. doi: 10.1136/hrt.2007.126003
- 19 41. Kim JY, Choi EY, Kim W, Rim SJ. Left ventricular outflow obstruction occurs  
20 immediately after exercise in patients with non-obstructive hypertrophic  
21 cardiomyopathy. *Rev Cardiovasc Med*. 2021;22:469-473. doi: 10.31083/j.rcm2202053

22

1 **Tables**

2 **Table 1. Baseline characteristics stratified by quartiles of overall physical activity\***

	<b>Overall (n=188)</b>	<b>Quartile 1 (n=47)</b>	<b>Quartile 2 (n=47)</b>	<b>Quartile 3 (n=47)</b>	<b>Quartile 4 (n=47)</b>	<b>p-value</b>
<b>Male sex</b>	108 (57)	21 (45)	23 (49)	26 (55)	38 (81)	0.002
<b>Age at presentation (years)</b>	43.4±14.8	42.6±13.2	42.1±16.7	44.2±15.0	44.5±14.4	0.830
<b>Proband</b>	80 (43)	19 (40)	16 (34)	20 (43)	25 (53)	0.301
<b>Maximum wall thickness (mm)</b>	16±6	15±7	16±7	16±6	16±6	0.968
<b>LV ejection fraction (%)</b>	59±10	60±7	59±9	60±8	57±13	0.552
<b>LV end-diastolic diameter (mm)</b>	46±6	44±5	46±7	45±6	48±7	0.157
<b>Left atrial diameter (mm)</b>	40±7	39±6	40±7	40±10	40±6	0.962
<b>Body surface area (m<sup>2</sup>)</b>	2.0 [1.8-2.1]	1.9 [1.8-2.1]	1.8 [1.8-2.1]	2.0 [1.7-2.1]	2.0 [1.9-2.1]	0.786

3 \*Subject characteristics, stratified by average MET-hours/week of recreational and occupational physical activity quartiles before first clinical  
 4 presentation; (Quartile 1: 0-25 MET-hours/week); (Quartile 2: 26-56 MET-hours/week), (Quartile 3: 57-110 MET-hours/week); (Quartile 4: 113-  
 5 351 MET-hours/week). Values are shown as mean ± standard deviation, median (interquartile range) or counts (percentage). Abbreviations as in  
 6 text.

1 **Table 2. Associations of physical activity with primary endpoint (major**  
2 **cardiomyopathy-related events)**

	<b>aHR*</b>	<b>95% CI</b>	<b>p-value</b>
Overall physical activity (per 7.5 MET-hours/week of AHA minimum recommended exercise level)	1.00	1.00-1.00	0.900
High dynamic (per 1 MET-hours/week)	1.00	0.98-1.02	0.826
High static (per 1 MET-hours/week)	0.97	0.92-1.02	0.274

3 \*Corrected for sex. Abbreviations as in text.

4

1 **Table 3. Associations of physical activity with secondary endpoints (MVA, HF events,**  
 2 **SRT and cardiomyopathy penetrance)\***

	aHR <sup>†</sup>	95% CI	P-value
<b>MVA</b>			
Overall physical activity (per 7.5 MET-hours/week of AHA minimum recommended exercise level)	1.00	1.00-1.00	0.422
High-dynamic (dichotomized by median 10 MET-hours/week)	2.29	0.80-6.55	0.122
High-dynamic (dichotomized by 75 <sup>th</sup> percentile 23 MET-hours/week)	2.70	1.01-7.24	0.049
High static (per 1 MET-hours/week)	0.98	0.92-1.05	0.589
<b>HF events</b>			
Overall physical activity (per 7.5 MET-hours/week of AHA minimum recommended exercise level)	1.00	1.00-1.00	0.869
High-dynamic (per 1 MET-hours/week)	1.01	0.99-1.04	0.338
High-static (per 1 MET-hours/week)	0.95	0.83-1.08	0.432
<b>SRT</b>			
Overall physical activity (per 7.5 MET-hours/week of AHA minimum recommended exercise level)	1.00	1.00-1.00	0.810
High-dynamic (per 1 MET-hours/week)	0.97	0.93-1.01	0.169
High-static (per 1 MET-hours/week)	0.98	0.91-1.06	0.661
<b>Cardiomyopathy penetrance</b>			
Overall physical activity (per 7.5 MET-hours/week of AHA minimum recommended exercise level)	1.00	1.00-1.00	0.787
High-dynamic (per 1 MET-hours/week)	0.99	0.97-1.01	0.259
High-static (per 1 MET-hours/week)	1.00	0.97-1.02	0.774

3 \*Associations were preferentially analyzed as continuous values and presented as such, or  
 4 presented using clinically meaningful cutoffs (e.g. recommended minimum of overall activity).  
 5 For high-dynamic exercise and the MVA outcome, however, the linearity assumption was  
 6 violated and data is presented in a dichotomized fashion. † Corrected for sex. Abbreviations as  
 7 in text.

1 **Figure legends**

2 **Figure 1. Survival free from major cardiomyopathy-related events.**

3 Kaplan-Meier curves showing cumulative survival free from MCE, stratified by quartiles of  
4 MET-hours/week, for (A) overall physical activity; (B) High-dynamic exercise, (C) High-  
5 static exercise. Abbreviations as in text.

6

7 **Figure 2. Survival free from malignant ventricular arrhythmia.**

8 Kaplan-Meier curves showing cumulative survival free from MVA, stratified by 75<sup>th</sup>  
9 percentile MET-hours/week for high-dynamic exercise. Abbreviations as in text.

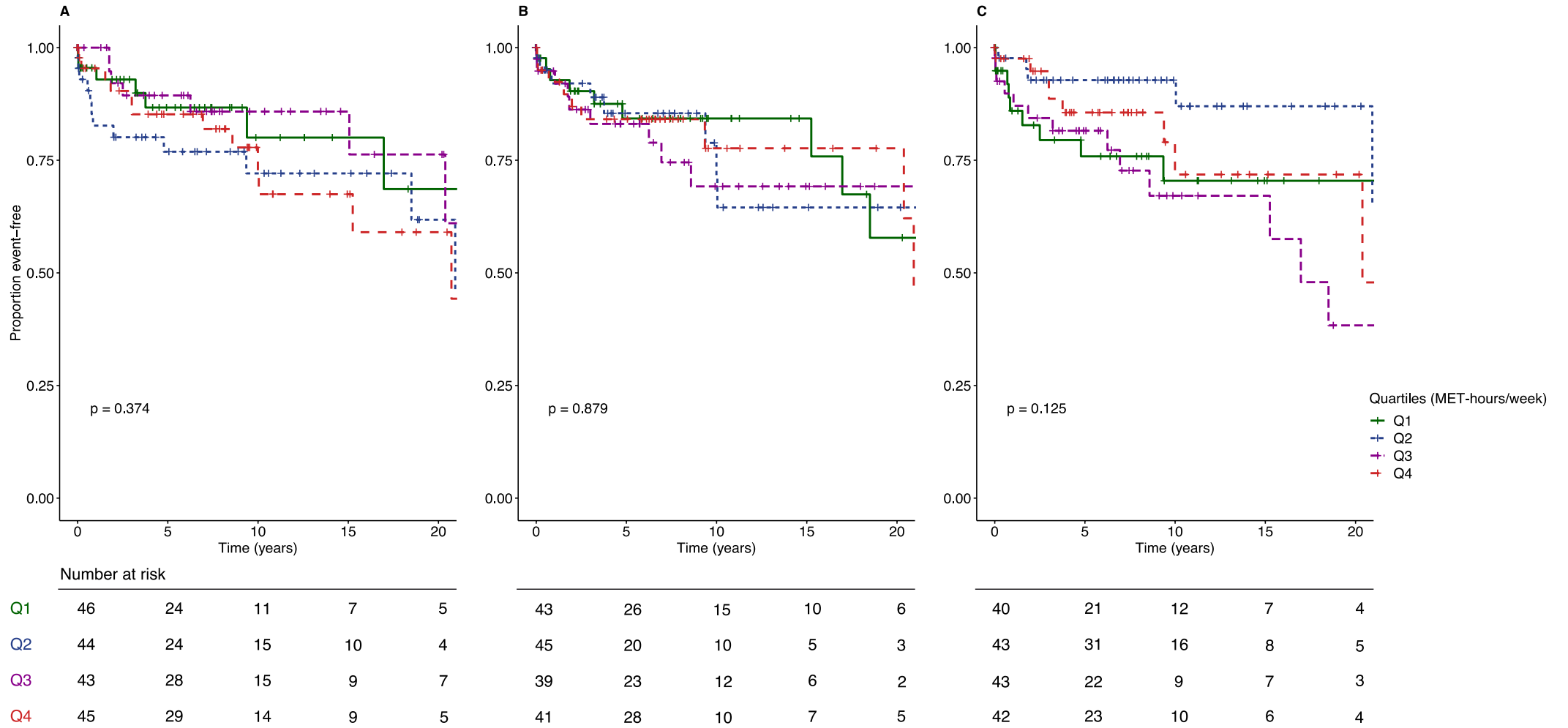
10

11 **Figure 3. Cardiomyopathy penetrance**

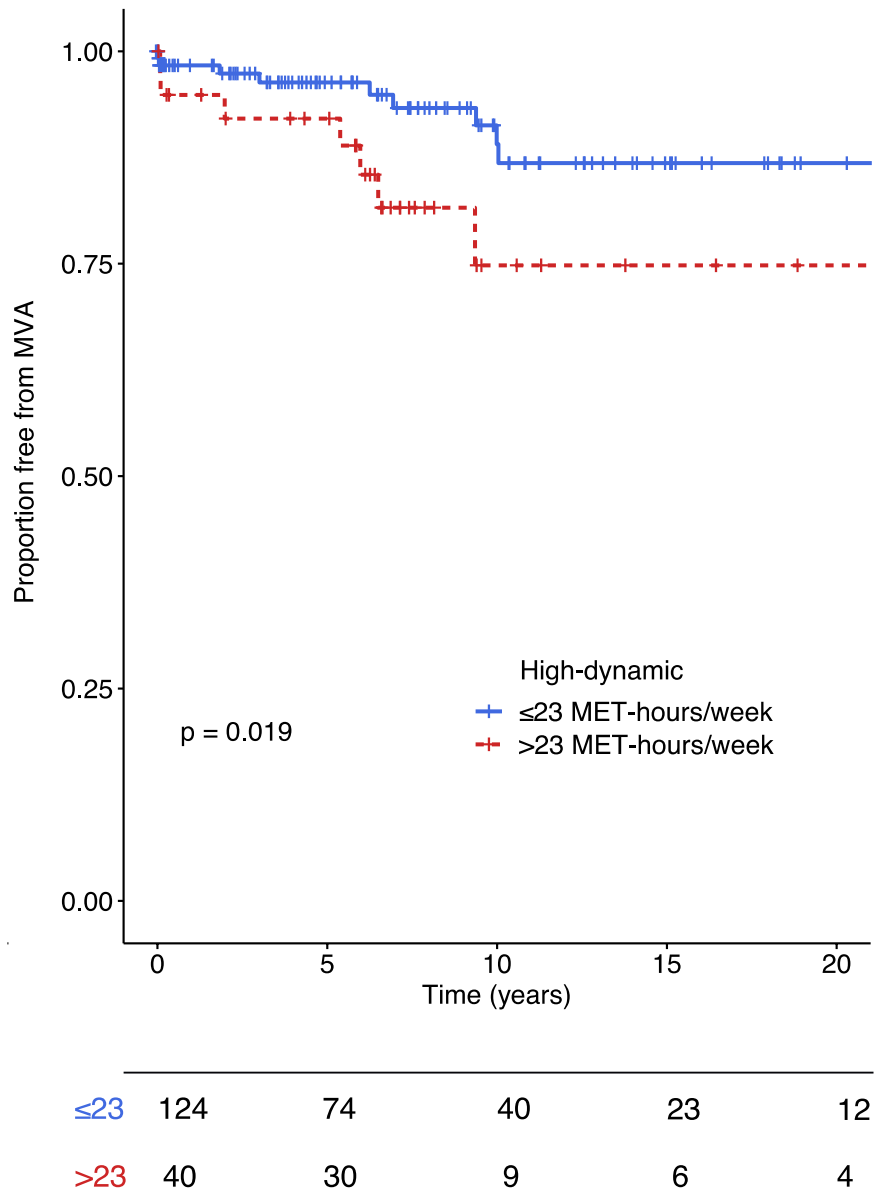
12 Kaplan-Meier curves showing cumulative survival free from cardiomyopathy penetrance,  
13 stratified by the quartiles of MET-hours/week, for (A) overall physical activity (B) high  
14 dynamic exercise and (C) high static exercise. Abbreviations as in text.



1 **Figure 1.**



1 **Figure 2.**



2

1 **Figure 3.**

2

