

1 **Recreational and occupational physical activity and risk of adverse events**
2 **in truncating *MYBPC3* founder variant carriers**

3
4 Fahima Hassanzada, MD^{a,b}*, Mark Jansen, MD, PhD^{a,b,c}*, Freyja H.M.van Lint, MD^{a,b,d,e*},
5 Laurens P. Bosman, MD, PhD^{b,c}, Amand F. Schmidt, PhD^{b,c,f}, Dennis Dooijes, PhD^{a,b}, Danny
6 van de Sande, MD, PhD^c, Bristi Miah, MSc^a, Saskia N. van der Crabben, MD, PhD^{b,e}, Arthur
7 A.M. Wilde, MD, PhD^{b,i}, Ronald H. Lekanne Deprez, MD, PhD^{b,e}, Rudolf A. de Boer, MD,
8 PhD^{b,k,l}, Imke Christiaans, MD, PhD^m, Jan D.H. Jongbloed, PhD^m, Harald T. Jorstad, MD,
9 PhD^j, Folkert W. Asselbergs, MD, PhD^{b,i,n}, J. Peter van Tintelen, MD, PhD^{a,b,e}, Annette F.
10 Baas, MD, PhD^{a,b}, Anneline S.J.M. te Riele, MD, PhD^{b,c}

11 * These authors contributed equally

12
13 **Affiliations:**

14 ^a Department of Genetics, University Medical Center Utrecht, Utrecht University, Utrecht, the
15 Netherlands.

16 ^b ‘Member of the European Reference Network for rare, low prevalence and complex diseases
17 of the heart: ERN GUARD-Heart’ (ERN GUARDHEART; <http://guardheart.ern-net.eu>).

18 ^c Department of Cardiology, University Medical Center Utrecht, Utrecht University, Utrecht,
19 the Netherlands.

20 ^d Department of Genetics, Radboud University Medical Center, Nijmegen, the Netherlands.

21 ^e Department of Human Genetics, Amsterdam University Medical Center, University of
22 Amsterdam, the Netherlands.

23 ^f Netherlands Heart Institute, Utrecht, the Netherlands.

24 ^g Institute of Cardiovascular Science, Faculty of Population Health Sciences, University
25 College London, London, UK.

26 ^h Department of Cardiology, University Medical Center Groningen, University of Groningen,
27 Groningen, the Netherlands.

28 ⁱ Department of Cardiology, University Medical Centre Amsterdam, University of
29 Amsterdam, Amsterdam, the Netherlands; Amsterdam Cardiovascular Sciences, Heart Failure
30 and Arrhythmias, University Medical Centre Amsterdam, Amsterdam, the Netherlands.

31 ^j Department of Cardiology, Heart Center, Amsterdam UMC, University of Amsterdam,
32 Amsterdam Movement Sciences, Amsterdam Cardiovascular Sciences, Amsterdam, The

33 **Not certified by peer review** preprint reports new research that has not been certified by peer review and should not be used to guide clinical practice.

1 ^k University Medical Center Groningen, University of Groningen, Department of Cardiology,
2 Groningen, the Netherlands.

3 ^l Department of Cardiology, Thorax Center, Erasmus University Medical Center, Erasmus
4 University Rotterdam, Rotterdam, the Netherlands.

5 ^m Department of Genetics, University Medical Centre Groningen, University of Groningen,
6 Groningen, the Netherlands.

7 ⁿ Health Data Research UK and Institute of Health Informatics, University College London,
8 London, United Kingdom.

9

10 **Short title:** Exercise in *MYBPC3* founder variants carriers

11

12 **Address for correspondence:**

13 Fahima Hassanzada

14 Department of Genetics, University Medical Center Utrecht, Heidelberglaan 100, 3584 CX

15 Utrecht, the Netherlands

16 Telephone number: +31-650124657

17 E-mail: f.hassanzada-4@umcutrecht.nl

18

19 **Total word count:** 5568

20

1 **Abstract**

2 **Background:** *MYBPC3* founder variants cause hypertrophic cardiomyopathy (HCM) leading
3 to heart failure (HF) and malignant ventricular arrhythmias (MVA). Exercise is typically
4 regarded a risk factor for disease expression, although evidence is conflicting. Stratifying by
5 type of exercise may discriminate low- from high-risk activities in these patients.

6 **Objective(s):** Evaluate effects of exercise, stratified by high-static and high-dynamic
7 component, on risk of major cardiomyopathy-related events (MCE) and cardiomyopathy
8 penetrance among *MYBPC3* founder variant carriers.

9 **Methods:** We interviewed 188 carriers (57% male, 43.4±14.8 years) on exercise participation
10 since age ten. Exercise was quantified as metabolic equivalent task (MET)-hours/week before
11 presentation. MCE was defined as a composite of MVA (sustained ventricular
12 tachycardia/fibrillation), HF (HF hospitalizations or transplantation), and septal reduction
13 therapy. Static and dynamic exercise were defined per Bethesda classification. Associations of
14 exercise with MCE and cardiomyopathy penetrance were adjusted for sex and assessed using
15 Cox regression.

16 **Results:** Overall, 40 (21%) subjects experienced MCE and 139 (74%) were diagnosed with
17 cardiomyopathy. No association was found for overall physical activity and high-static
18 activity with MCE (p=0.900 overall; p=0.274 high-static) or cardiomyopathy penetrance
19 (p=0.787 overall; p=0.774 high-static). In contrast, high-dynamic activity was associated with
20 MVA (dichotomized at 75th percentile: adjusted hazard ratio 2.70, 95% confidence interval
21 1.01-7.24, p=0.049).

22 **Conclusions:** Overall exercise participation does not generally increase the risk of adverse
23 events among *MYBPC3* founder variant carriers. Nonetheless, an increased risk of MVA was
24 observed among those engaged in the highest quartile of high-dynamic-sports, suggesting that
25 high-level high-intensity exercise activities should be entertained with caution.

1 **Keywords:** HCM, high dynamic exercise, adverse events, ventricular arrhythmia, *MYBPC3*

1 **Abbreviations and Acronyms**

- 2 aHR = adjusted hazard ratio
- 3 HCM = hypertrophic cardiomyopathy
- 4 HF = heart failure
- 5 ICD = implantable cardioverter-defibrillator
- 6 LV = left ventricular
- 7 MCE = major cardiomyopathy-related events
- 8 MET = metabolic equivalent of task
- 9 MVA = malignant ventricular arrhythmia
- 10 SRT = septal reduction therapy
- 11 *MYBPC3* = myosin binding protein C3 gene

1 **Introduction**

2 Hypertrophic cardiomyopathy (HCM) is a relatively common inherited heart disease with an
3 estimated prevalence of 1:500.¹ It is characterized by left ventricular hypertrophy which is not
4 explained by abnormal loading conditions.² Clinical presentation is heterogeneous with many
5 patients remaining mildly symptomatic or asymptomatic, while others present with left
6 ventricular (LV) outflow tract obstruction requiring septal reduction therapy (SRT), malignant
7 ventricular arrhythmias (MVA) or debilitating heart failure (HF). This heterogeneity suggests
8 an influential role of environmental factors.³

9 HCM is predominantly caused by variants in genes encoding sarcomeric proteins. In
10 approximately 50% of patients, a likely pathogenic or pathogenic variant is found.^{4,5} Variants
11 are most frequently found in the *MYBPC3* gene, encoding cardiac myosin-binding protein C,
12 an important regulator of cardiac contractility.⁶ In the Netherlands, approximately 20% of
13 HCM patients carry a truncating *MYBPC3* founder variant.⁷ These variants lead to truncation
14 of *MYBPC3* mRNA and subsequent haploinsufficiency of cardiac myosin-binding protein C,
15 which has been shown to impact prognosis similar to other truncating *MYBPC3* variants.^{8,9}

16 As HCM has frequently been reported in young athletes suffering sudden cardiac
17 death, guidelines have traditionally discouraged competitive exercise in HCM patients.¹⁰⁻¹²
18 Exercise is hypothesized to contribute to sudden cardiac death in HCM by several
19 mechanisms, including increasing LV wall thickness and outflow tract obstruction, inducing
20 metabolic disturbances or ischemia, as well as pro-arrhythmic effects by adrenergic
21 stimulation and/or fibrosis formation.^{12,13} However, several studies investigating effects of
22 exercise in HCM have not reported negative effects, with a single study even showing a
23 protective effect on all-cause and cardiovascular mortality.¹⁴⁻¹⁶ Of note, none of these studies
24 assessed specific types of exercise, such as a distinction between static and dynamic

1 properties.¹⁵ High-static exercise, for example, may theoretically be more likely to contribute
2 to hypertrophic remodeling, compared with high-dynamic exercise.^{17,18}

3 Therefore, we evaluated the effect of recreational and occupational physical activity
4 on risk of major cardiomyopathy-related events (MCE) and cardiomyopathy penetrance in
5 carriers of truncating *MYBPC3* founder variants, stratified by high-static and high-dynamic
6 properties.

7

8 **Methods**

9 **Patient population**

10 This study is embedded in the BIO For CARE (Identification of BIOmarkers of HCM
11 development and progression in Dutch *MYBPC3* Founder variant CARriers) and UNRAVEL
12 (www.unravelrdp.nl) registries.^{19,20} Carriers of the c.2373dupG, c.2827C>T,
13 c.2864_2865delCT and c.3776delA *MYBPC3* founder variants were recruited from three
14 Dutch university medical centers (Utrecht, Groningen and Amsterdam). The Institutional
15 Review Board, Medical Ethics Committee of UMC Utrecht gave ethical approval for this
16 work, with local approval at the Amsterdam UMC and UMC Groningen. All individuals
17 provided written informed consent.

18

19 **Clinical data and outcomes**

20 Clinical data were obtained from electronic health records and collected using pre-specified
21 electronic case report forms, as previously described.¹⁹ Collected data included sex, date
22 of birth, date and type of clinical presentation, hospitalization records, and results of (non-)
23 invasive studies (12-lead electrocardiogram [ECG], 2-dimensional transthoracic
24 echocardiography, and cardiac magnetic resonance imaging). Clinical presentation was

1 defined as the first medical visit for cardiac screening and/or symptoms related to *MYBPC3* in
2 one of the enrolling centers.

3 The primary outcome was a composite of MCE, constituting of MVA (defined as
4 sustained ventricular tachycardia, defined as ≥ 30 seconds at ≥ 100 beats per minute and
5 resulting in hemodynamic instability or requiring termination, aborted cardiac arrest or
6 sudden cardiac death), HF events (defined as HF hospitalization, ventricular assist device
7 implantation, heart transplantation or HF-related mortality), and SRT (defined as septal
8 myectomy or alcohol septal ablation).

9 Secondary outcomes were MVA, HF events, and SRT, analyzed as separate outcomes.
10 In addition, we evaluated the development of an overt cardiomyopathy diagnosis as secondary
11 outcome measure. For the latter, HCM was defined as a maximum left ventricular wall
12 thickness of ≥ 13 mm not explained by abnormal loading conditions;¹¹ dilated cardiomyopathy
13 (DCM) as dilation of left ventricle with a left ventricular ejection fraction (LVEF) $< 45\%$;²¹
14 Non-compaction cardiomyopathy (NCCM) as left ventricular non-compaction fulfilling the
15 Jenni or Petersen criteria and a LVEF $< 50\%$,^{22,23} all not explained by abnormal loading
16 conditions or coronary artery disease. Individuals with LVEF $< 50\%$ but without other criteria
17 for a specific cardiomyopathy diagnosis were classified as cardiomyopathy not otherwise
18 specified (CMP-NOS).

19

20 **Physical activity interviews**

21 Structured telephone interviews were conducted by three research assistants and one
22 physician. Details of the exercise interview have been described previously.^{24,25} In short,
23 physical activity was documented since age 10 years onwards using a pre-defined data
24 collection sheet for all recreational and occupational physical activity. For each entry, the
25 intensity (light, moderate or vigorous) and duration of physical activity were registered.

1 Subsequently, the corresponding metabolic equivalents (METs) were assigned using the
2 Ainsworth et al. compendium of physical activities.²⁶

3 We assessed the impact of physical activity from age 10 years until presentation by
4 stratifying in: (i) overall physical activity; and (ii) physical activity during high-static and
5 high-dynamic sports. Overall physical activity was quantified as the average MET-
6 hours/week spent on any physical activity and analyzed both in quartiles (based on the data)
7 and based on increments of 7.5 MET-hours/week (which is the American Heart Association's
8 recommended minimum physical activity) to compare physical activity to standardized
9 recommendations. High-static and high-dynamic sports were classified according to the 36th
10 Bethesda Conference Classification of Sports (Supplemental Figure 1) and quantified as
11 MET-hours/week spent on this specific activity.^{17,27} In this study, sport activities in categories
12 IIIA, IIIB and IIIC were classified as high-static; and sport activities in categories IC, IIC and
13 IIIC as high-dynamic. Of note, class IIIC overlaps in both high-static and high-dynamic
14 categories. As high-static and high-dynamic activity categories were analyzed separately, the
15 use of class IIIC in both categories was statistically permitted.

16

17 **Statistical analysis**

18 Analyses were performed in R software (version 4.2.2). Continuous variables were expressed
19 as mean \pm standard deviation or median [interquartile ranges (IQR)] as appropriate and
20 compared using independent samples t-tests or Mann-Whitney U tests, respectively.

21 Categorical variables were presented as frequencies (percentage) and compared using the chi-
22 square or Fisher's exact test. Physical activity before and after presentation were compared
23 using the Wilcoxon signed rank test.

24 Cumulative freedom from the composite outcome was determined by the Kaplan-
25 Meier method and Cox-proportional hazard model. Follow-up was considered to start at first

1 clinical presentation and end at the date of reaching the endpoint or censoring (i.e. death from
2 any other cause or most recent follow-up at which the endpoint could be ascertained).
3 Schoenfeld residuals test was used to check the proportional hazard assumption. The linearity
4 assumption in the Cox model was assessed using Martingale residuals. In the absence of
5 established cut-off points for sport class-specific activities, medians and 75th percentile were
6 used to dichotomize activities in case of significant non-linearity.²⁸ Multivariable Cox
7 regression was performed to correct for potential confounding from sex. Sensitivity analyses
8 were performed by restricting the analyses to patients diagnosed with a cardiomyopathy
9 diagnosis at first presentation. P-values <0.05 were considered statistically significant
10 throughout.

11

12 **Results**

13 **Study population**

14 We included 188 carriers of truncating *MYBPC3* founder variants. Their clinical
15 characteristics are provided in Table 1. Overall, 108 (57%) were male, with a mean age
16 43.4±14.8 years at first presentation. Almost half (n=80, 43%) of study subjects were
17 probands. Maximum wall thickness was 16±6 mm with a mean LV ejection fraction of 59%
18 ±10 and a LV end-diastolic diameter of 46±6 mm. At first clinical evaluation, 104 (55%) had
19 a diagnosis of cardiomyopathy, most commonly HCM (n=98, 52% of overall population)
20 (Supplemental Table 1).

21

22 **Physical activity history**

23 Before first medical contact, study participants were physically active for a median of 56 [26-
24 111] MET-hours/week, of which 15 [6-29] MET-hours were spent on recreational activity,
25 and 34 [4-84] MET-hours on occupational activity. High-dynamic activity was more

1 frequently entertained (10 [3-23] MET-hours/week) than high-static activity (0.1 [0-2] MET-
2 hours/week).

3 After presentation, median activity decreased to 38 [14-106] MET-hours/week
4 ($p=0.021$ compared to presentation). This was driven by a drastic decrease in occupational
5 activities to 11 [0-73] MET-hours/week ($p=0.022$ compared to presentation), whereas
6 recreational activities remained unchanged 14 [5-31] MET-hours/week ($p=0.435$ compared to
7 presentation). While there was no significant change observed in high-static activities
8 between presentation and follow-up ($p=0.324$), a reduction was noted in high-dynamic
9 activities, $p<0.001$ compared to presentation. Boxplots of physical activity before and after
10 presentation are provided in Supplemental Figure 2.

11

12 **Major Cardiomyopathy-related Events**

13 In total, the primary endpoint (i.e. MCE) occurred in 40 (21%) individuals. This included 20
14 (11%) MVA events, 13 (7%) HF events, and 15 (8%) SRT events. Combinations of events
15 occurred in eight (4%) individuals (three subjects with both MVA and HF, two subjects with
16 both HF and SRT, and three subjects with MVA and SRT). None of the study subjects
17 presented with MCE and median time to first MCE was 6.6 [2.2-11.9] years after
18 presentation. There were no statistically significant differences in age ($p=0.816$) and sex
19 ($p=0.351$) between those with and without MCE. In contrast, LV hypertrophy (21 vs. 14 mm,
20 $p<0.001$) and LV ejection fraction (55 vs. 60%, $p=0.011$) were significantly different in those
21 with vs. without MCE, respectively.

22 Figure 1A shows the effect of overall physical activity on the primary endpoint. As
23 can be appreciated, no difference was observed for MCE occurrence between quartiles of
24 overall physical activity measured in MET-hours/week ($p=0.374$).

1 Figure 1B and C show the effect of high-dynamic activity and high-static activity on
2 MCE occurrence, respectively. As shown, there were no significant differences between
3 quartiles of either activity category for MCE ($p=0.879$ for high-dynamic activity; and $p=0.125$
4 for high-static activity).

6 **Secondary Endpoints**

7 Malignant ventricular arrhythmias:

8 None of the individuals had experienced MVA at presentation. A total of 20 (11%) subjects
9 experienced MVA by last follow-up, on average 6.8 [3.3-12.6] years after presentation. No
10 differences were observed in age ($p=0.998$) or sex ($p=0.063$) between those with and without
11 MVA.

12 Supplemental Figure 3A show the effect of overall physical activity and 3C the effect
13 of high-static activity on MVA occurrence, respectively. As shown, there were no significant
14 differences between quartiles of either activity category for MVA ($p=0.130$ for overall
15 physical activity; and $p=0.325$ for high-static activity). As can be appreciated in Supplemental
16 Figure 3B, an increased risk of MVA was observed among those engaged in the highest
17 quartile of high-dynamic activities ($p=0.041$ compared to the lowest quartile of high-dynamic
18 activities).

19 Assessing the impact of high-dynamic activity on the risk of MVA, a violation of
20 linearity assumption of Cox proportional hazard was observed hence values of high-dynamic
21 activity for this endpoint were dichotomized by its 75th percentile. As shown in Figure 2,
22 high-dynamic exercise was associated with MVA when dichotomized by its 75th percentile
23 (23 MET-hours/week, aHR 2.70, 95% CI 1.01-7.24, $p=0.049$).

24 Heart failure events:

1 None of the individuals had experienced HF events at presentation. A total of 13 (7%)
2 subjects experienced HF events by last follow-up, on average 7.1 (3.2-13.9) years after
3 presentation. No differences were observed in age ($p=0.618$) or sex ($p=0.581$) among those
4 with and without HF events.

5 Supplemental Figure 4A shows the effect of overall physical activity on HF events. As
6 can be appreciated, no difference was observed for HF occurrence between quartiles of
7 overall physical activity measured in MET-hours/week ($p=0.954$).

8 Supplemental Figure 4B and C show the effect of high-dynamic activity and high-
9 static activity on HF occurrence, respectively. There were no significant differences between
10 quartiles of either activity category for HF events ($p=0.490$ for high-dynamic activity; and
11 $p=0.834$ for high-static activity).

12

13 Septal reduction therapy

14 None of the individuals had experienced SRT at presentation. A total of 15 (8%) subjects
15 experienced SRT by last follow-up, with a median 7.1 [3.3-13.9] years after presentation. No
16 differences were observed in age ($p=0.525$) or sex ($p=0.964$) among those with and without
17 SRT.

18 Supplemental Figure 5A shows the effect of overall physical activity on SRT. No
19 difference was observed for SRT between quartiles of overall physical activity measured in
20 MET-hours/week ($p=0.539$).

21 As shown in Supplemental Figure 5B (high-dynamic activity) and C (high-static
22 activity), there were no significant differences between quartiles of either activity category for
23 SRT ($p=0.473$ for high-dynamic activity; and $p=0.072$ for high-static activity).

24

25 Cardiomyopathy penetrance

1 A total of 104 (55%) subjects were diagnosed with cardiomyopathy (98 HCM, 3 DCM
2 [possibly HCM in the “burned-out phase”], 2 CMP-NOS and 1 NCCM) at first clinical
3 evaluation. During a median 7.4 [3.9-14.6] years of follow-up, 35 (19%) additional subjects
4 developed cardiomyopathy, all of whom with an HCM diagnosis. This culminated to a total of
5 139 (74%) patients with cardiomyopathy by last follow-up.

6 Figure 3A shows the effect of overall physical activity on cardiomyopathy penetrance.
7 As can be appreciated, no difference was observed in cardiomyopathy penetrance between
8 quartiles of overall physical activity measured in MET-hours/week ($p=0.208$).

9 Figure 3B and C show the effect of high-dynamic activity and high-static activity on
10 cardiomyopathy penetrance, respectively. No significant differences between quartiles of
11 either activity category for cardiomyopathy penetrance were identified ($p=0.701$ for high-
12 dynamic activity; and $p=0.718$ for high-static activity).

13

14 **Sensitivity analysis**

15 Our study population included a sizable number of subjects without phenotypic expression,
16 which may influence our ability to pick up significant differences among groups. We
17 therefore repeated the analyses solely in individuals with a cardiomyopathy diagnosis as
18 sensitivity analysis. Clinical characteristics of subjects with a cardiomyopathy diagnosis are
19 provided in Supplemental Table 2. In Supplemental Tables 3 and 4, it is shown that results
20 were identical to the main results.

21

22 **Discussion**

23 In this study, we evaluated the effects of physical activity stratified by type of activity on
24 clinical outcomes and cardiomyopathy penetrance in 188 carriers of truncating *MYBPC3*
25 founder variants. We assessed overall physical activity both in quartiles based on our data,

1 and based on the American Heart Association's recommended minimum for healthy adults
2 (7.5 MET-hours/week). High-dynamic and high-static activities were classified as per
3 Bethesda classification and evaluated in quartiles since there is no recommended cutoff for
4 these types of activity.

5 Our findings revealed that neither overall physical activity nor high-static exercise
6 increased the risk of MCE and cardiomyopathy penetrance. In contrast, when analyzing the
7 combined endpoint by its separate components, we observed that high-dynamic exercise
8 increased the risk of MVA when dichotomized by its 75th percentile, which was equivalent to
9 more than 23 MET-hours/week. For example, this is reached when an individual spends 50
10 minutes on vigorous swimming (9.8 METs/hour) for 3 days per week, or participates in 50
11 minutes of vigorous running (10 METs/hour) 3 days per week, or in 1.5 hours of vigorous
12 soccer (10 METs/hour) 2 days per week.

13

14 **Physical activity and risk of MCE and cardiomyopathy penetrance**

15 Physical activity has been traditionally considered as a risk factor for patients with HCM,
16 which has resulted in conservative exercise recommendations. However, several recent
17 studies have shown neutral or even beneficial effects of exercise in HCM. Saberi *et al.*
18 assessed the impact of moderate-intensity exercise compared to usual activity in a preliminary
19 randomized controlled trial including 136 patients with HCM. Not only did they not observe
20 any MVA in either group, but they additionally observed a small but statistically significant
21 increase in peak oxygen consumption in the moderate-intensity exercise group.²⁹
22 Consistently, Klempfner *et al.* did not observe adverse events and showed increased
23 functional capacity in a single-arm trial including 20 patients with symptomatic HCM who
24 underwent a cardiac rehabilitation exercise program.³⁰ Leveraging a nationwide population-
25 based cohort, Kwon *et al.* observed decreases in all-cause and cardiovascular mortality for

1 increasing tertiles of physical activity among 7666 patients with HCM during more than 5
2 years of follow-up.¹⁶ Likewise, in a retrospective, cross-sectional study, Andreassen et al.
3 observed a positive association between exercise training during childhood and LV diastolic
4 function in 121 patients with HCM and 66 carriers of HCM-associated genetic variants.³¹
5 Some authors have suggested that exercise restrictions have negative psychological effects in
6 athletic patients with HCM, and may result in increased risks of cardiovascular disease
7 resulting from a sedentary lifestyle.^{32,33} In sharp contrast to the abovementioned reassuring
8 findings, however, in a small series Aengevaeren et al. found that HCM patients with
9 increasing tertiles of physical activity were younger at the time of diagnosis and more
10 frequently had a history of non-sustained ventricular tachycardia.¹⁵

11 A recent large prospective study shed light on this matter. In this study, Lampert et al.
12 did not observe a higher rate of death or life-threatening arrhythmias among 1660 individuals
13 with HCM exercising vigorously than those participating in moderate exercise.³⁴ Of note, the
14 authors used a cut-off of 360 MET-hours/year to define vigorous exercise, which is equivalent
15 to approximately 7 MET-hours/week. This aligns closely with the AHA's minimum
16 recommended exercise level of 7.5 MET-hours/week for healthy adults. For example, this is
17 reached when an individual spends one hour on vigorous bicycling (7.8 METs/hour) 1 day per
18 week. This is a much lower cut-off than the 23 MET-hours/week that we used for the 75th
19 percentile of high-dynamic exercise, possibly explaining the observed difference between our
20 studies. In line with the results of Lampert et al.,³⁴ we found that overall physical activity and
21 high-static exercise did not significantly increase the risk for any of our outcomes in carriers
22 of truncating *MYBPC3* variants. Our study thus confirms and extends prior research, since our
23 detailed data collection also allowed for sub-analyses stratified by specific types of exercise
24 (i.e. by dynamic or static component), which may be more suitable to uncover possibly
25 detrimental effects on clinical course in this patient population. Regardless of the available

1 evidence, future prospective studies will be pivotal to better understand the interaction
2 between exercise, HCM-related outcomes and general health benefits, in order to improve
3 exercise recommendations for this generally young patient population.
4

5 **High-dynamic exercise and MVA**

6 To the best of our knowledge, our study was the first to specifically assess high-dynamic and
7 high-static exercise as potential predictors of cardiomyopathy-related outcomes. While we did
8 not find an association between high-static exercise with any of our study outcomes, our data
9 shows that those who participated in the highest quartile of high-dynamic exercise had
10 increased risk of MVA suggesting that these activities should be entertained with caution. The
11 exact mechanism underlying the association of high-dynamic exercise and MVA in these
12 patients is not fully understood. Previous studies have proposed several factors such as
13 heterogenous myocardial blood flow, myocardial disarray, associated abnormalities of the
14 vascular response to exercise, electrolyte and sympathetic-vagal imbalance, and exercise-
15 induced metabolic acidosis.^{13,35-38} More research in (pre-)clinical disease models may shed
16 further light on this issue.
17

18 **High-static exercise and disease course**

19 Our results showed that high-static exercise did not increase the risk of MCE and
20 cardiomyopathy penetrance among *MYBPC3*-founder variant carriers. Whether high-static
21 exercise can be considered safe, or whether there could be an effect of more intensive high-
22 static exercise on disease course, cannot be determined from our data. Furthermore, caution is
23 needed in those patients with LV outflow tract obstruction at rest or during exercise.³⁹⁻⁴¹ Of
24 note, out of 26 individuals with LV outflow tract obstruction in our study, one was engaged in
25 frequent high-static exercise (>2 MET-hours/week), who experienced MCE. Therefore, we

1 emphasize the importance of shared decision making for participation in more intensive static
2 and also dynamic exercise. Future prospective studies are required to personalize exercise
3 recommendations and to determine the optimal exercise threshold that is safe in this patient
4 population.

6 **Limitations and Clinical Implications**

7 To our knowledge, this is the first and largest interview-based exercise study in a genetically
8 homogenous HCM population. Genotype-driven inclusion allowed us to assess
9 cardiomyopathy penetrance as an outcome. Additionally, the design of the interview allowed
10 us to assess specific categories of physical activity. This provides a foundation for future
11 prospective studies to evaluate the effect of specific types of exercise on the disease course of
12 patients with HCM and may contribute to finetuning exercise recommendations for these
13 patients, balancing potential benefits of exercise with exercise-related risks.

14 Some limitations warrant consideration. The retrospective nature of this study results
15 in ascertainment bias and missing data. Recall bias and social desirability bias may have
16 resulted in over- or underreporting of physical activities. As carriers were required to be alive
17 for the exercise interview, severely affected carriers that passed away before initiation of this
18 study could not be included. Restricting inclusion to truncating *MYBPC3* variants may limit
19 generalizability to the wider HCM population. Furthermore, the intensity of physical activity
20 was only taken into account in the calculation of the number of MET-hours/week. However,
21 different intensities of exercise could contribute to hypertrophic remodeling to differing
22 degrees, e.g. vigorous exercise may be more detrimental than mild to moderate intensity
23 exercise. Despite being the largest interview-based study in a genetically homogenous HCM
24 population, sample size was still not sufficient to control for additional potential confounding
25 variables such as hypertension and body mass index. Additionally, we did not inquire about

1 the use of anabolic steroids or other exercise-enhancing drugs and supplements, which could
2 modify or confound the apparent effects of exercise in some carriers. Finally, in the absence
3 of established cut-off values for high-static and high-dynamic exercise, we used data-driven
4 cut-off values, which limit direct interpretation and may result in overfitting. Taken together,
5 these limitations emphasize the importance of prospective validation of our results.

6

7 **Conclusions**

8 In truncating *MYBPC3* founder variant carriers, overall physical activity and high-static
9 exercise are not associated with an increased risk of MCE and cardiomyopathy penetrance.
10 However, those who participated in the highest quartile of high-dynamic exercise had
11 increased risk of MVA, suggesting that these activities should be entertained with caution.
12 Taken together, these findings may contribute to improving exercise recommendations in
13 HCM patients. We envision a more individualized approach and support the restrictions of
14 very frequent high-intensity exercise in HCM patients. Future studies are needed to
15 prospectively validate these findings.

1 **Clinical perspectives**

2 Competency in medical knowledge: The impact of different types of exercise on the risk of
3 major cardiomyopathy-related events and cardiomyopathy penetrance in truncating *MYBPC3*
4 founder variant carriers is unknown. We found that only those who participated in the highest
5 quartile of high-dynamic exercise had increased risk of malignant ventricular arrhythmias; all
6 other types of exercise did not result in increased risk of major cardiomyopathy-related events
7 or cardiomyopathy penetrance. This suggests that while most exercise may be considered
8 safe, very frequent high-dynamic exercise should be entertained with caution.

9 Translational outlook: Further prospective research is necessary to validate these findings and
10 determine safe thresholds and/or intensities of high-dynamic and high-static exercise for
11 patients with cardiomyopathy, specifically HCM and carriers of pathogenic genetic variants.

1 **Acknowledgements**

2 We thank all study participants who made this study possible.

3

4 **Sources of funding**

5 This work was supported by the Netherlands Cardiovascular Research Initiative with the
6 support of the Dutch Heart Foundation (CVON2014-40 DOSIS, Dutch Cardiovascular
7 Alliance 2020B005 DoubleDose to A.F.B, F.W.A., J.P.v.T., M.M. and R.A.d.B.; CVON2015-
8 12 e-Detect to F.W.A, J.P.v.T. A.S.J.M.t.R. and I.C.), the Dutch Heart Foundation (Dekker
9 2015T041 to A.F.B. and M.J), ZONMw Off Road 2021 to ASJMtR, European Research
10 Council HORIZON IMPACT (grant no. #101115536 to A.S.J.M.t.R.), University College
11 London Hospitals National Institute for Health and Care Research Biomedical Research
12 Centre (to F.W.A.), and British Heart Foundation (PG/18/5033837, PG/22/10989 and
13 University College London/British Heart Foundation Research Accelerator AA/18/6/34223 to
14 A.F.S.). Dr. de Boer is supported by the Netherlands Heart Foundation (grants 2017-21; 2017-
15 11; 2018-30;), by the leDucq Foundation (Cure-PLaN), and by the European Research
16 Council (ERC CoG 818715).

17

18 **Disclosures**

19 Dr. De Boer received research grants and/or fees from AstraZeneca, Abbott, Boehringer
20 Ingelheim, Cardior Pharmaceuticals GmbH, Ionis Pharmaceuticals, Inc., Novo Nordisk, and
21 Roche; and has had speaker engagements with Abbott, AstraZeneca, Bayer, Bristol Myers
22 Squibb, Novartis, and Roche.

1 **References**

- 2 1. Semsarian C, Ingles J, Maron MS, Maron BJ. New perspectives on the prevalence of
3 hypertrophic cardiomyopathy. *J Am Coll Cardiol*. 2015;65:1249-1254. doi:
4 10.1016/j.jacc.2015.01.019
- 5 2. Arbelo E, Protonotarios A, Gimeno JR, Arbustini E, Barriales-Villa R, Basso C,
6 Bezzina CR, Biagini E, Blom NA, de Boer RA, et al. 2023 ESC Guidelines for the
7 management of cardiomyopathies. *Eur Heart J*. 2023;44:3503-3626. doi:
8 10.1093/eurheartj/ehad194
- 9 3. Repetti GG, Kim Y, Pereira AC, Ingles J, Russell MW, Lakdawala NK, Ho CY, Day
10 S, Semsarian C, McDonough B, et al. Discordant clinical features of identical
11 hypertrophic cardiomyopathy twins. *Proc Natl Acad Sci U S A*. 2021;118. doi:
12 10.1073/pnas.2021717118
- 13 4. Maron BJ, Maron MS, Semsarian C. Genetics of hypertrophic cardiomyopathy after
14 20 years: clinical perspectives. *J Am Coll Cardiol*. 2012;60:705-715. doi:
15 10.1016/j.jacc.2012.02.068
- 16 5. Jansweijer JA, van Spaendonck-Zwarts KY, Tanck MWT, van Tintelen JP,
17 Christiaans I, van der Smagt J, Vermeer A, Bos JM, Moss AJ, Swan H, et al.
18 Heritability in genetic heart disease: the role of genetic background. *Open Heart*.
19 2019;6:e000929. doi: 10.1136/openhrt-2018-000929
- 20 6. Crilley JG, Boehm EA, Blair E, Rajagopalan B, Blamire AM, Styles P, McKenna WJ,
21 Ostman-Smith I, Clarke K, Watkins H. Hypertrophic cardiomyopathy due to
22 sarcomeric gene mutations is characterized by impaired energy metabolism
23 irrespective of the degree of hypertrophy. *J Am Coll Cardiol*. 2003;41:1776-1782. doi:
24 10.1016/s0735-1097(02)03009-7

- 1 7. Christiaans I, Nannenber EA, Dooijes D, Jongbloed RJ, Michels M, Postema PG,
2 Majoor-Krakauer D, van den Wijngaard A, Mannens MM, van Tintelen JP, et al.
3 Founder mutations in hypertrophic cardiomyopathy patients in the Netherlands. *Neth*
4 *Heart J*. 2010;18:248-254. doi: 10.1007/bf03091771
- 5 8. van Dijk SJ, Dooijes D, dos Remedios C, Michels M, Lamers JM, Winegrad S,
6 Schlossarek S, Carrier L, ten Cate FJ, Stienen GJ, van der Velden J. Cardiac myosin-
7 binding protein C mutations and hypertrophic cardiomyopathy: haploinsufficiency,
8 deranged phosphorylation, and cardiomyocyte dysfunction. *Circulation*.
9 2009;119:1473-1483. doi: 10.1161/circulationaha.108.838672
- 10 9. Nannenber EA, Michels M, Christiaans I, Majoor-Krakauer D, Hoedemaekers YM,
11 van Tintelen JP, Lombardi MP, ten Cate FJ, Schinkel AF, Tijssen JG, et al. Mortality
12 risk of untreated myosin-binding protein C-related hypertrophic cardiomyopathy:
13 insight into the natural history. *J Am Coll Cardiol*. 2011;58:2406-2414. doi:
14 10.1016/j.jacc.2011.07.044
- 15 10. Eckart RE, Scoville SL, Campbell CL, Shry EA, Stajduhar KC, Potter RN, Pearse LA,
16 Virmani R. Sudden death in young adults: a 25-year review of autopsies in military
17 recruits. *Ann Intern Med*. 2004;141:829-834. doi: 10.7326/0003-4819-141-11-
18 200412070-00005
- 19 11. Elliott PM, Anastasakis A, Borger MA, Borggrefe M, Cecchi F, Charron P, Hagege
20 AA, Lafont A, Limongelli G, Mahrholdt H, et al. 2014 ESC Guidelines on diagnosis
21 and management of hypertrophic cardiomyopathy: the Task Force for the Diagnosis
22 and Management of Hypertrophic Cardiomyopathy of the European Society of
23 Cardiology (ESC). *Eur Heart J*. 2014;35:2733-2779. doi: 10.1093/eurheartj/ehu284
- 24 12. Gersh BJ, Maron BJ, Bonow RO, Dearani JA, Fifer MA, Link MS, Naidu SS,
25 Nishimura RA, Ommen SR, Rakowski H, et al. 2011 ACCF/AHA Guideline for the

- 1 Diagnosis and Treatment of Hypertrophic Cardiomyopathy: a report of the American
2 College of Cardiology Foundation/American Heart Association Task Force on
3 Practice Guidelines. Developed in collaboration with the American Association for
4 Thoracic Surgery, American Society of Echocardiography, American Society of
5 Nuclear Cardiology, Heart Failure Society of America, Heart Rhythm Society, Society
6 for Cardiovascular Angiography and Interventions, and Society of Thoracic Surgeons.
7 *J Am Coll Cardiol.* 2011;58:e212-260. doi: 10.1016/j.jacc.2011.06.011
- 8 13. Hindieh W, Adler A, Weissler-Snir A, Fourey D, Harris S, Rakowski H. Exercise in
9 patients with hypertrophic cardiomyopathy: A review of current evidence, national
10 guideline recommendations and a proposal for a new direction to fitness. *J Sci Med*
11 *Sport.* 2017;20:333-338. doi: 10.1016/j.jsams.2016.09.007
- 12 14. Dejgaard LA, Haland TF, Lie OH, Ribe M, Bjune T, Leren IS, Berge KE, Edvardsen
13 T, Haugaa KH. Vigorous exercise in patients with hypertrophic cardiomyopathy. *Int J*
14 *Cardiol.* 2018;250:157-163. doi: 10.1016/j.ijcard.2017.07.015
- 15 15. Aengevaeren VL, Gommans DHF, Dieker HJ, Timmermans J, Verheugt FWA,
16 Bakker J, Hopman MTE, MJ DEB, Brouwer MA, Thompson PD, et al. Association
17 between Lifelong Physical Activity and Disease Characteristics in HCM. *Med Sci*
18 *Sports Exerc.* 2019;51:1995-2002. doi: 10.1249/mss.0000000000002015
- 19 16. Kwon S, Lee HJ, Han KD, Kim DH, Lee SP, Hwang IC, Yoon Y, Park JB, Lee H,
20 Kwak S, et al. Association of physical activity with all-cause and cardiovascular
21 mortality in 7666 adults with hypertrophic cardiomyopathy (HCM): more physical
22 activity is better. *Br J Sports Med.* 2021;55:1034-1040. doi: 10.1136/bjsports-2020-
23 101987
- 24 17. Mitchell JH, Haskell W, Snell P, Van Camp SP. Task Force 8: classification of sports.
25 *J Am Coll Cardiol.* 2005;45:1364-1367. doi: 10.1016/j.jacc.2005.02.015

- 1 18. Maron BJ. Sudden death in young athletes. *N Engl J Med*. 2003;349:1064-1075. doi:
2 10.1056/NEJMra022783
- 3 19. Jansen M, Christiaans I, van der Crabben SN, Michels M, Huurman R, Hoedemaekers
4 YM, Dooijes D, Jongbloed JDH, Boven LG, Lekanne Deprez RH, et al. BIO FOr
5 CARE: biomarkers of hypertrophic cardiomyopathy development and progression in
6 carriers of Dutch founder truncating MYBPC3 variants-design and status. *Neth Heart*
7 *J*. 2021;29:318-329. doi: 10.1007/s12471-021-01539-w
- 8 20. Sammani A, Jansen M, Linschoten M, Bagheri A, de Jonge N, Kirkels H, van Laake
9 LW, Vink A, van Tintelen JP, Dooijes D, et al. UNRAVEL: big data analytics
10 research data platform to improve care of patients with cardiomyopathies using routine
11 electronic health records and standardised biobanking. *Neth Heart J*. 2019;27:426-
12 434. doi: 10.1007/s12471-019-1288-4
- 13 21. Pinto YM, Elliott PM, Arbustini E, Adler Y, Anastasakis A, Böhm M, Duboc D,
14 Gimeno J, de Groote P, Imazio M, et al. Proposal for a revised definition of dilated
15 cardiomyopathy, hypokinetic non-dilated cardiomyopathy, and its implications for
16 clinical practice: a position statement of the ESC working group on myocardial and
17 pericardial diseases. *Eur Heart J*. 2016;37:1850-1858. doi: 10.1093/eurheartj/ehv727
- 18 22. Jenni R, Oechslin E, Schneider J, Attenhofer Jost C, Kaufmann PA.
19 Echocardiographic and pathoanatomical characteristics of isolated left ventricular non-
20 compaction: a step towards classification as a distinct cardiomyopathy. *Heart*.
21 2001;86:666-671. doi: 10.1136/heart.86.6.666
- 22 23. Petersen SE, Selvanayagam JB, Wiesmann F, Robson MD, Francis JM, Anderson RH,
23 Watkins H, Neubauer S. Left ventricular non-compaction: insights from
24 cardiovascular magnetic resonance imaging. *J Am Coll Cardiol*. 2005;46:101-105.
25 doi: 10.1016/j.jacc.2005.03.045

- 1 24. James CA, Bhonsale A, Tichnell C, Murray B, Russell SD, Tandri H, Tedford RJ,
2 Judge DP, Calkins H. Exercise increases age-related penetrance and arrhythmic risk in
3 arrhythmogenic right ventricular dysplasia/cardiomyopathy-associated desmosomal
4 mutation carriers. *J Am Coll Cardiol*. 2013;62:1290-1297. doi:
5 10.1016/j.jacc.2013.06.033
- 6 25. van Lint FHM, Hassanzada F, Verstraelen TE, Wang W, Bosman LP, van der Zwaag
7 PA, Oomen T, Calkins H, Murray B, Tichnell C, et al. Exercise does not influence
8 development of phenotype in PLN p.(Arg14del) cardiomyopathy. *Neth Heart J*.
9 2023;31:291-299. doi: 10.1007/s12471-023-01800-4
- 10 26. Ainsworth BE, Haskell WL, Herrmann SD, Meckes N, Bassett DR, Jr., Tudor-Locke
11 C, Greer JL, Vezina J, Whitt-Glover MC, Leon AS. 2011 Compendium of Physical
12 Activities: a second update of codes and MET values. *Med Sci Sports Exerc*.
13 2011;43:1575-1581. doi: 10.1249/MSS.0b013e31821ece12
- 14 27. Braverman AC, Harris KM, Kovacs RJ, Maron BJ. Eligibility and Disqualification
15 Recommendations for Competitive Athletes With Cardiovascular Abnormalities: Task
16 Force 7: Aortic Diseases, Including Marfan Syndrome: A Scientific Statement From
17 the American Heart Association and American College of Cardiology. *Circulation*.
18 2015;132:e303-309. doi: 10.1161/cir.0000000000000243
- 19 28. Hothorn T, Lausen B. On the exact distribution of maximally selected rank statistics.
20 *Computational Statistics & Data Analysis*. 2003;43:121-137. doi: 10.1016/s0167-
21 9473(02)00225-6
- 22 29. Saberi S, Wheeler M, Bragg-Gresham J, Hornsby W, Agarwal PP, Attili A,
23 Concannon M, Dries AM, Shmargad Y, Salisbury H, et al. Effect of Moderate-
24 Intensity Exercise Training on Peak Oxygen Consumption in Patients With

- 1 Hypertrophic Cardiomyopathy: A Randomized Clinical Trial. *Jama*. 2017;317:1349-
2 1357. doi: 10.1001/jama.2017.2503
- 3 30. Klempfner R, Kamerman T, Schwammenthal E, Nahshon A, Hay I, Goldenberg I,
4 Dov F, Arad M. Efficacy of exercise training in symptomatic patients with
5 hypertrophic cardiomyopathy: results of a structured exercise training program in a
6 cardiac rehabilitation center. *Eur J Prev Cardiol*. 2015;22:13-19. doi:
7 10.1177/2047487313501277
- 8 31. Andreassen K, Dejgaard LA, Lie Ø, Fink TS, Lunde IG, Edvardsen T, Haugaa KH,
9 Stokke MK. Exercise training during childhood and adolescence is associated with
10 favorable diastolic function in hypertrophic cardiomyopathy. *Int J Cardiol*.
11 2022;364:65-71. doi: 10.1016/j.ijcard.2022.06.042
- 12 32. Luiten RC, Ormond K, Post L, Asif IM, Wheeler MT, Caleshu C. Exercise restrictions
13 trigger psychological difficulty in active and athletic adults with hypertrophic
14 cardiomyopathy. *Open Heart*. 2016;3:e000488. doi: 10.1136/openhrt-2016-000488
- 15 33. Reineck E, Rolston B, Bragg-Gresham JL, Salberg L, Baty L, Kumar S, Wheeler MT,
16 Ashley E, Saberi S, Day SM. Physical activity and other health behaviors in adults
17 with hypertrophic cardiomyopathy. *Am J Cardiol*. 2013;111:1034-1039. doi:
18 10.1016/j.amjcard.2012.12.018
- 19 34. Lampert R, Ackerman MJ, Marino BS, Burg M, Ainsworth B, Salberg L, Tome
20 Esteban MT, Ho CY, Abraham R, Balaji S, et al. Vigorous Exercise in Patients With
21 Hypertrophic Cardiomyopathy. *JAMA Cardiol*. 2023;8:595-605. doi:
22 10.1001/jamacardio.2023.1042
- 23 35. Maron MS, Olivotto I, Maron BJ, Prasad SK, Cecchi F, Udelson JE, Camici PG. The
24 case for myocardial ischemia in hypertrophic cardiomyopathy. *J Am Coll Cardiol*.
25 2009;54:866-875. doi: 10.1016/j.jacc.2009.04.072

- 1 36. Varnava AM, Elliott PM, Baboonian C, Davison F, Davies MJ, McKenna WJ.
2 Hypertrophic cardiomyopathy: histopathological features of sudden death in cardiac
3 troponin T disease. *Circulation*. 2001;104:1380-1384. doi: 10.1161/hc3701.095952
- 4 37. Podrid PJ, Fuchs T, Candinas R. Role of the sympathetic nervous system in the
5 genesis of ventricular arrhythmia. *Circulation*. 1990;82:1103-1113.
- 6 38. Cserne Szappanos H, Viola HM, Ito DW, Lim S, Mangala M, Holliday M, Barratt
7 Ross S, Semsarian C, Hill A, Dixon RE, Hool LC. Cytoskeletal disarray increases
8 arrhythmogenic vulnerability during sympathetic stimulation in a model of
9 hypertrophic cardiomyopathy. *Sci Rep*. 2023;13:11296. doi: 10.1038/s41598-023-
10 38296-2
- 11 39. Maron MS, Olivotto I, Zenovich AG, Link MS, Pandian NG, Kuvin JT, Nistri S,
12 Cecchi F, Udelson JE, Maron BJ. Hypertrophic cardiomyopathy is predominantly a
13 disease of left ventricular outflow tract obstruction. *Circulation*. 2006;114:2232-2239.
14 doi: 10.1161/circulationaha.106.644682
- 15 40. Shah JS, Esteban MT, Thaman R, Sharma R, Mist B, Pantazis A, Ward D, Kohli SK,
16 Page SP, Demetrescu C, et al. Prevalence of exercise-induced left ventricular outflow
17 tract obstruction in symptomatic patients with non-obstructive hypertrophic
18 cardiomyopathy. *Heart*. 2008;94:1288-1294. doi: 10.1136/hrt.2007.126003
- 19 41. Kim JY, Choi EY, Kim W, Rim SJ. Left ventricular outflow obstruction occurs
20 immediately after exercise in patients with non-obstructive hypertrophic
21 cardiomyopathy. *Rev Cardiovasc Med*. 2021;22:469-473. doi: 10.31083/j.rcm2202053

22

1 **Tables**

2 **Table 1. Baseline characteristics stratified by quartiles of overall physical activity***

	Overall (n=188)	Quartile 1 (n=47)	Quartile 2 (n=47)	Quartile 3 (n=47)	Quartile 4 (n=47)	p-value
Male sex	108 (57)	21 (45)	23 (49)	26 (55)	38 (81)	0.002
Age at presentation (years)	43.4±14.8	42.6±13.2	42.1±16.7	44.2±15.0	44.5±14.4	0.830
Proband	80 (43)	19 (40)	16 (34)	20 (43)	25 (53)	0.301
Maximum wall thickness (mm)	16±6	15±7	16±7	16±6	16±6	0.968
LV ejection fraction (%)	59±10	60±7	59±9	60±8	57±13	0.552
LV end-diastolic diameter (mm)	46±6	44±5	46±7	45±6	48±7	0.157
Left atrial diameter (mm)	40±7	39±6	40±7	40±10	40±6	0.962
Body surface area (m²)	2.0 [1.8-2.1]	1.9 [1.8-2.1]	1.8 [1.8-2.1]	2.0 [1.7-2.1]	2.0 [1.9-2.1]	0.786

3 *Subject characteristics, stratified by average MET-hours/week of recreational and occupational physical activity quartiles before first clinical
 4 presentation; (Quartile 1: 0-25 MET-hours/week); (Quartile 2: 26-56 MET-hours/week), (Quartile 3: 57-110 MET-hours/week); (Quartile 4: 113-
 5 351 MET-hours/week). Values are shown as mean ± standard deviation, median (interquartile range) or counts (percentage). Abbreviations as in
 6 text.

1 **Table 2. Associations of physical activity with primary endpoint (major**
2 **cardiomyopathy-related events)**

	aHR*	95% CI	p-value
Overall physical activity (per 7.5 MET-hours/week of AHA minimum recommended exercise level)	1.00	1.00-1.00	0.900
High dynamic (per 1 MET-hours/week)	1.00	0.98-1.02	0.826
High static (per 1 MET-hours/week)	0.97	0.92-1.02	0.274

3 *Corrected for sex. Abbreviations as in text.

4

1 **Table 3. Associations of physical activity with secondary endpoints (MVA, HF events,**
 2 **SRT and cardiomyopathy penetrance)***

	aHR [†]	95% CI	P-value
MVA			
Overall physical activity (per 7.5 MET-hours/week of AHA minimum recommended exercise level)	1.00	1.00-1.00	0.422
High-dynamic (dichotomized by median 10 MET-hours/week)	2.29	0.80-6.55	0.122
High-dynamic (dichotomized by 75 th percentile 23 MET-hours/week)	2.70	1.01-7.24	0.049
High static (per 1 MET-hours/week)	0.98	0.92-1.05	0.589
HF events			
Overall physical activity (per 7.5 MET-hours/week of AHA minimum recommended exercise level)	1.00	1.00-1.00	0.869
High-dynamic (per 1 MET-hours/week)	1.01	0.99-1.04	0.338
High-static (per 1 MET-hours/week)	0.95	0.83-1.08	0.432
SRT			
Overall physical activity (per 7.5 MET-hours/week of AHA minimum recommended exercise level)	1.00	1.00-1.00	0.810
High-dynamic (per 1 MET-hours/week)	0.97	0.93-1.01	0.169
High-static (per 1 MET-hours/week)	0.98	0.91-1.06	0.661
Cardiomyopathy penetrance			
Overall physical activity (per 7.5 MET-hours/week of AHA minimum recommended exercise level)	1.00	1.00-1.00	0.787
High-dynamic (per 1 MET-hours/week)	0.99	0.97-1.01	0.259
High-static (per 1 MET-hours/week)	1.00	0.97-1.02	0.774

3 *Associations were preferentially analyzed as continuous values and presented as such, or
 4 presented using clinically meaningful cutoffs (e.g. recommended minimum of overall activity).
 5 For high-dynamic exercise and the MVA outcome, however, the linearity assumption was
 6 violated and data is presented in a dichotomized fashion. † Corrected for sex. Abbreviations as
 7 in text.

1 **Figure legends**

2 **Figure 1. Survival free from major cardiomyopathy-related events.**

3 Kaplan-Meier curves showing cumulative survival free from MCE, stratified by quartiles of
4 MET-hours/week, for (A) overall physical activity; (B) High-dynamic exercise, (C) High-
5 static exercise. Abbreviations as in text.

6

7 **Figure 2. Survival free from malignant ventricular arrhythmia.**

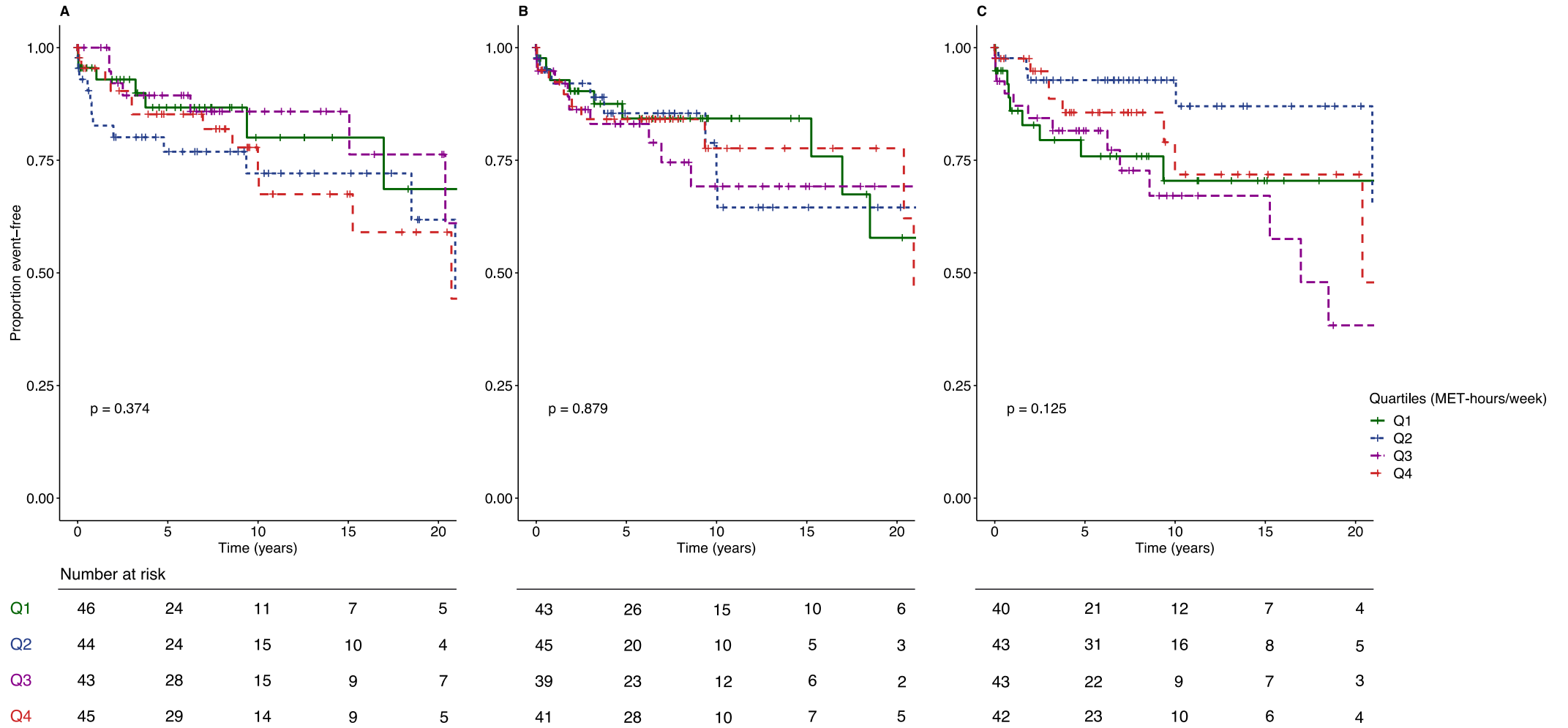
8 Kaplan-Meier curves showing cumulative survival free from MVA, stratified by 75th
9 percentile MET-hours/week for high-dynamic exercise. Abbreviations as in text.

10

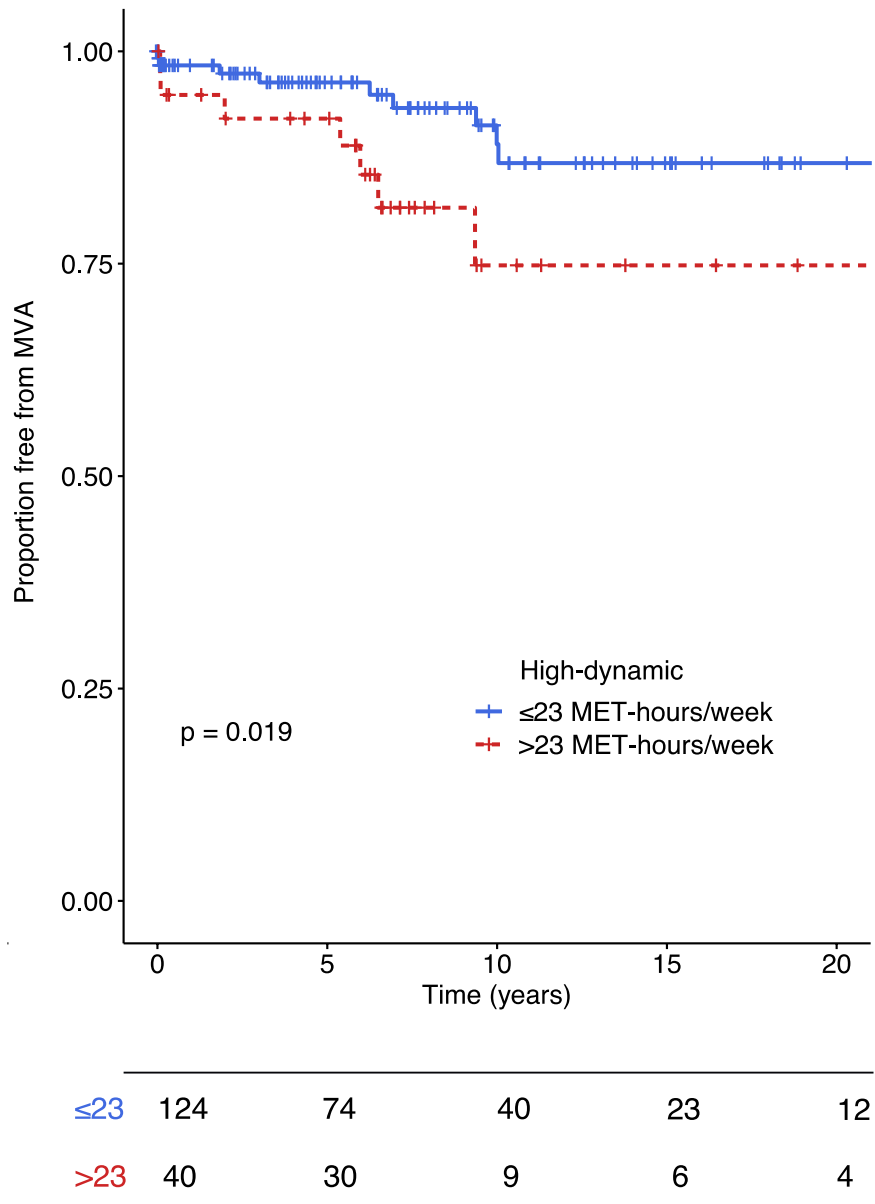
11 **Figure 3. Cardiomyopathy penetrance**

12 Kaplan-Meier curves showing cumulative survival free from cardiomyopathy penetrance,
13 stratified by the quartiles of MET-hours/week, for (A) overall physical activity (B) high
14 dynamic exercise and (C) high static exercise. Abbreviations as in text.

1 **Figure 1.**



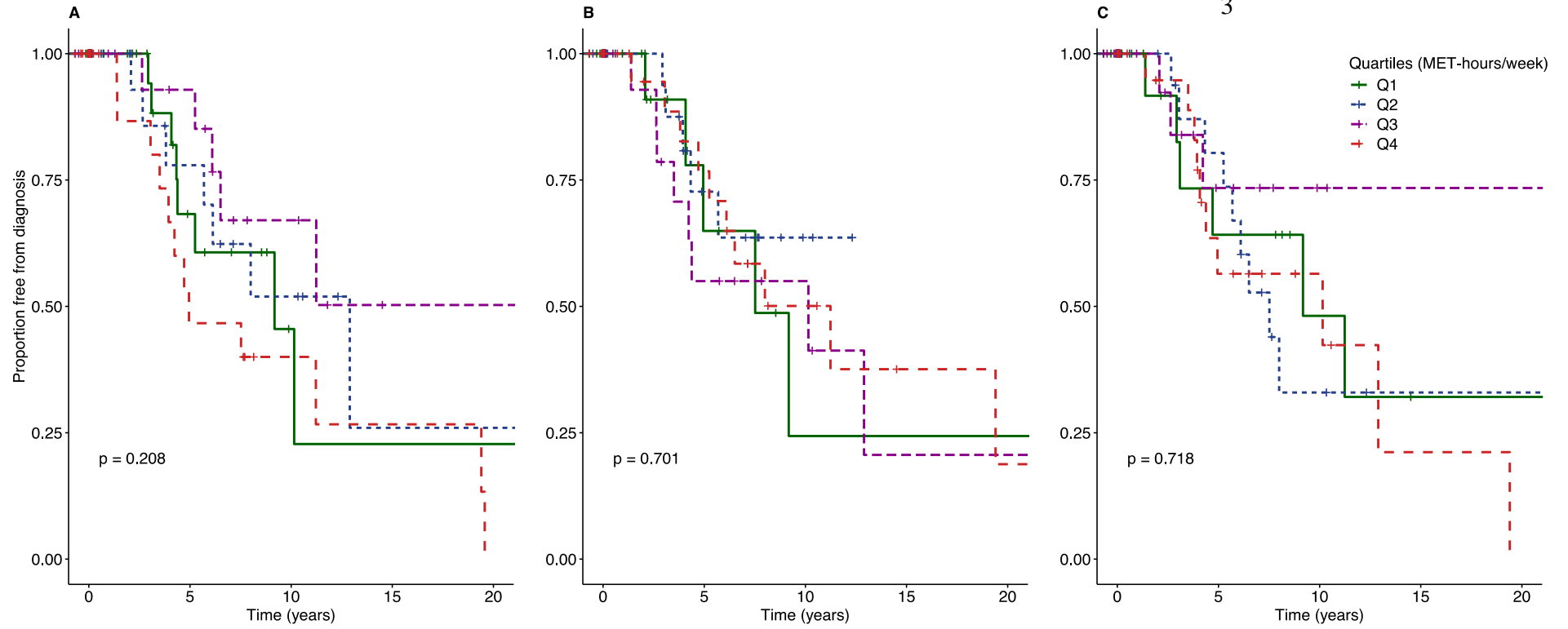
1 **Figure 2.**



2

1 **Figure 3.**

2



Number at risk

Q1	42	9	2	1	1	34	5	1	1	1	34	7	3	1	1
Q2	35	10	5	1	1	35	8	2	0	0	34	12	3	1	1
Q3	35	12	5	1	1	36	7	4	1	1	36	6	2	1	1
Q4	36	7	3	2	0	36	13	5	2	1	37	8	4	1	0