

# The landscape of paediatric infectious disease exposure in a rural sub-Saharan Africa setting in Kilifi, Kenya: longitudinal serological analysis over two decades and priorities for future vaccine development

Deirdre F Foley, MD<sup>\*#1,2,3</sup>, Timothy K Chege, MSc<sup>#1, 4</sup>, Joyce Kabagenyi, MSc<sup>#1</sup>, Karen McCarthy, MD<sup>1,2</sup>, Elijah T Gicheru, Dip<sup>1</sup>, Nelson Kibinge, PhD, Angela W Maina, MSc<sup>1</sup>, Jacqueline M Waeni, PhD<sup>1</sup>, Ralf Clemens PhD<sup>5</sup>, Sue-Ann Costa Clemens, PhD<sup>4,6</sup>, James Tuju, PhD<sup>1</sup>, Charles J Sande, PhD<sup>\*1,7</sup>

1. KEMRI-Wellcome Trust Research Programme, Kilifi, Kenya

2. Department of Continuing Education, University of Oxford, Oxford, UK

3. Children's Health Ireland – Crumlin, Dublin, Ireland

4. Institute of Global Health, University of Siena, Siena, Italy

5. International Vaccine Institute, Seoul, Republic of Korea

6. Oxford Vaccine Group, University of Oxford, Oxford, UK

7. Nuffield Department of Medicine, University of Oxford, Oxford, UK

\* Correspondence to:

Dr Deirdre J Foley, Department of Paediatric Infectious Disease, Children's Health Ireland at Crumlin, Cooley Road, Dublin, D12N512, Ireland ([deirdrefoley731@gmail.com](mailto:deirdrefoley731@gmail.com))

Dr. Charles Sande, Bioscience Department, KEMRI-Wellcome Trust Research Programme, Kilifi, Kenya P.O. Box 230 - 80108 ([csande@kemri-wellcome.org](mailto:csande@kemri-wellcome.org))

#contributed equally

NOTE: This preprint reports new research that has not been certified by peer review and should not be used to guide clinical practice.

## 29 Abstract

### 30 Background

31

32 The paucity of data on the contemporary causes of serious infection among the world's most  
33 vulnerable children means the landscape of emerging paediatric infectious disease remains  
34 largely undefined and out of focus on the global vaccine research and development agenda.

35

### 36 Methods

37

38 We aimed to partially define the paediatric infectious disease landscape in a typical low-  
39 income setting in sub-Saharan Africa in Kilifi, Kenya by simultaneously estimating antibody  
40 prevalence for 38 infectious diseases using a longitudinal birth cohort that was sampled  
41 between 2002 and 2008 and a paediatric inpatient cohort that was sampled between 2006  
42 and 2017.

43

### 44 Findings

45

46 Among the infectious diseases with the highest antibody prevalence in the first year of life  
47 were vaccine-preventable diseases such as RSV (57.4%), mumps (31.5%) and influenza H3N2  
48 (37.3%). Antibody prevalence for *Plasmodium falciparum* shifted substantially over time,  
49 from 47% in the mid 2000s to 13% approximately 10 years later corresponding to a  
50 documented decline in parasite transmission. A high prevalence of antibodies was also  
51 observed in the first year of life for infections for which no licenced vaccines are currently  
52 available, including norovirus (34.2%), cytomegalovirus (44.7%), EBV (29.3%) and coxsackie B  
53 virus (40.7%). The prevalence to antibodies to vaccine antigens in the local immunisation  
54 schedule was generally high but varied by antigen.

55

### 56 Interpretation

57 The data show a high and temporally stable infection burden of RSV, mumps and influenza,  
58 providing a compelling evidence base to support progress towards the introduction of these  
59 vaccines into the local immunization schedule. The high prevalence of norovirus, EBV, CMV

60 and Coxsackie B provide rationale for increased vaccine research and development  
61 investment.

62 **Funding**

63 This research was funded by the Wellcome Trust (grant no. WT105882MA).

## 64 Introduction

65 Though the national under-five mortality rate in Kenya and many other low- and middle-  
66 income countries has declined by almost two-thirds since 1990, sub-Saharan Africa still  
67 reports the highest childhood mortality rate, and targets for the reduction of global childhood  
68 mortality remain unmet.<sup>1</sup> In the first two decades of this century there have been numerous  
69 reports of newly emergent infectious diseases that have caused major human outbreaks –  
70 including Rift Valley Fever virus,<sup>2</sup> pandemic and endemic coronaviruses,<sup>3</sup> Chikungunya virus,<sup>4</sup>  
71 Ebola virus<sup>5</sup> and Zika virus<sup>6</sup> among others. While some of these outbreaks have attracted  
72 global attention and have been the focus of co-ordinated international vaccine development  
73 efforts, many other pathogens with more localised transmission phenotypes in low-income  
74 countries have attracted less investment in vaccine research and development. These  
75 pathogens continue to exert a considerable and often covert morbidity and mortality burden  
76 among the world’s poorest populations.<sup>7</sup>

77 Many infections such as Rift-Valley Fever, West Nile and Usutu virus, among others, occur  
78 primarily in sub-Saharan Africa and cause widespread infections with potentially high case  
79 fatality rates. No vaccines currently exist for these and similar high-consequence pathogens  
80 that are predominantly localised to low-income countries (LICs). In addition to these major  
81 infections, there are many other vaccine-preventable diseases circulating among populations  
82 in LICs that continue to exert a serious toll on the health and well-being of these populations,  
83 but whose priority for introduction to national immunization schedule remains low.

84 To make the case for both vaccine introduction and increased investment in vaccine research  
85 against locally relevant pathogens, estimates of the infection burden attributable to specific  
86 pathogens in vulnerable populations is imperative. To assess this burden, we determined  
87 population-level antibody prevalence for 38 distinct infectious disease pathogens in young  
88 children from a low-income setting in sub-Saharan Africa. Using multi-target serological  
89 analysis of two paediatric cohorts in rural Kenya, we define the prevailing infectious disease  
90 landscape in young infants and children over the last two decades and propose priorities for  
91 vaccine development and introduction.

92

## 93 Methods

### 94 *Study design and participants*

95 This study was conducted in Kilifi County Kenya, a rural community on the Kenyan Coast. We  
96 used two study cohorts to measure disease of 38 infectious disease pathogens in Kenyan  
97 infants and young children. The first was a longitudinal birth cohort (Kilifi Birth Cohort, 'KBC')  
98 recruited between 2002 and 2005 from which cord blood was collected at birth, followed by  
99 repeated serum sampling at approximate three-month intervals until children were aged  
100 about thirty months of age (Supplementary figure 1). The second was an inpatient cohort  
101 comprising of paediatric inpatients admitted to Kilifi County Hospital between 2006 and 2017  
102 with a variety of infectious and non-infectious illnesses (Supplementary figure 2). Serum from  
103 each child was assayed for antibodies against the same set of infectious disease pathogens.  
104 All data are presented using anonymized codes that are delinked from personally identifiable  
105 participant data. This study was conducted in accordance to Good Clinical Laboratory practice  
106 principles and was approved by the Scientific Ethics Research Unit of the Kenya Medical  
107 Research Institute.

108

### 109 *Procedures*

110 Pathogen-specific antibodies were measured using a customized protein microarray designed  
111 to quantify serum IgG to a range of common and emerging infectious diseases. The complete  
112 set of pathogens, strains and antigens that were tested on this platform are listed in  
113 Supplementary table 1. Data generated on the microarray was extensively validated by  
114 relating changes in antibody level to known timings of vaccination or natural infection.  
115 Increases in antigen-specific antibodies in the birth cohort time series were confirmed to  
116 contemporaneously coincide with independent laboratory diagnoses based on PCR or  
117 enzyme immunoassays. An example of this validation approach is illustrated in  
118 Supplementary figure 3. Microarray slides were produced by the deposition of two 100pl  
119 droplets containing 1ug/ml of the protein antigens onto epoxy-coated polished glass slides by  
120 non-contact printing using an Aj003S Arrayjet Sprint microarrayer. Each slide was partitioned  
121 into 24 identical mini arrays onto which the complete set of antigens to be assayed were

122 identically printed. Printed slides were allowed to dry at ambient temperature and then  
123 placed at 4°C for long-term storage. Prior to sample processing, slides were scanned on a  
124 Genepix 4300A fluorescent scanner to obtain background slide fluorescence that would later  
125 be subtracted from the final microarray data set to correct for non-specific fluorescence.  
126 Slides were then loaded onto hybridization cassettes, washed three times with phosphate  
127 buffered saline, and incubated with a blocking buffer comprising phosphate buffered saline  
128 supplemented with Tween-20 and 5% bovine serum albumin for an hour at 37°C. A one in  
129 thirty dilution of human sera was prepared using phosphate buffered saline supplemented  
130 with tween-20 and 5% bovine serum albumin. Different serum samples that were pre-  
131 processed in this manner were then aliquoted into distinct mini-arrays and incubated at room  
132 temperature for three hours. The slides were then washed thrice, after which a one in four  
133 hundred dilution of polyclonal goat anti-human IgG conjugated to Alexa Fluor-647 was added  
134 to each mini-array and incubated at room temperature for two hours. The slides were then  
135 washed three times and rinsed with Milli-Q water, after which they were scanned using a  
136 Genepix 4300A scanner at PMT setting 600 and 100% power. The data was exported to R  
137 version 3.6.2 for analysis. The design of the microarray chip and the analytical sample  
138 workflow are shown in Supplementary figure 4.

139

#### 140 *Statistical analysis*

141 In the birth cohort, antigen-specific seroprevalence was determined by calculating the change  
142 in antibody level between successive timepoints in the longitudinal time series. The  
143 serological definition of an infection was an increase of  $\geq 4000$  antibody units (expressed as  
144 normalized median fluorescence intensities, MFI) between two serial timepoints and  
145 sustained in the subsequent two time points. An example of these serologically defined  
146 infections is illustrated in Supplementary figure 3 and in our previously published work<sup>8</sup>. Age-  
147 specific seroprevalence for different infections was determined by calculating the proportion  
148 of children with serologically defined infections at 12 and 24 months and of age. In the  
149 inpatient cohort, seroprevalence estimates at 12 months of age were calculated by first  
150 partitioning the antibody data into three-monthly age strata and then identifying a  
151 seronegative age stratum at the nadir of maternal antibody decline for each antigen. A

152 serological response threshold for each antigen was then defined as the mean antibody level  
153 in the seronegative stratum plus three standard deviations. This threshold was applied to  
154 calculate antibody prevalence at subsequent time points. Differences in seroprevalence  
155 between the birth and inpatient cohorts were measured using the chi-square 2-sample test  
156 for equality of proportions. To visualize age-related changes in antibody level against vaccine  
157 antigens in the birth cohort, we used linear spline regression modelling. The non-linear  
158 relationship between age and antibody titre was characterized by partitioning the predictor  
159 variable (age) into six-monthly segments in which the relationship between age and antibody  
160 titre was presumed to be linear. Piecewise linear regression models joined at 6-monthly  
161 changepoints starting at birth were developed using the 'stats' package available in R.

## 162 Results

163 To estimate the seroprevalence of antibodies against 38 infectious disease pathogens over  
164 the first two decades of this century in children in Kilifi, Kenya, we assayed a total of 1,134  
165 serum samples from two cohorts spanning a period of 15 years (January 2002 to June 2017).  
166 Local antibody prevalence in the first of these cohorts, the longitudinal Kilifi Birth Cohort (KBC)  
167 was estimated using serial samples collected from 124 children who were recruited at birth.  
168 This group was recruited between January 2002 and November 2008 and prospectively  
169 sampled at three-monthly intervals for approximately 30 months. An average of eight serum  
170 samples were collected from each child in the longitudinal series, resulting in a total collection  
171 of 958 serum samples (table 1). The second cohort was a paediatric inpatient (IP) cohort in  
172 which a single admission sample was collected from 176 children, who ranged between one  
173 day and 57 months of age and who had been admitted to hospital with a variety of medical  
174 conditions (table 1). A summary of the sampling frame for both the longitudinal and inpatient  
175 cohorts is shown in Supplementary figures 1 and 2 respectively.

176 Antibody prevalence for all 38 infectious diseases featured on the protein array was estimated  
177 at 12- and 24-months age in the birth cohort as shown in figure 1. Overall seroprevalence  
178 ranged from 0% for ebolavirus and yellow fever virus, to 57% for Respiratory Syncytial Virus  
179 (RSV) in the first year of life. To facilitate detailed analysis, antibody data were further  
180 stratified into four groups as follows: high prevalence infections (defined as seroprevalence  $\geq$

181 25%) that were vaccine-preventable, but not currently included on the Kenya Expanded  
182 Programme on Immunization (EPI) schedule (i.e. high prevalence, not on EPI or HP-NEPI), high  
183 prevalence diseases for which no licensed vaccines exist (high prevalence, no vaccine or HP-  
184 NV), low prevalence (LP) infections (seroprevalence <25%) regardless of vaccine availability,  
185 and diseases whose vaccines are current included in the Kenya EPI (i.e. Established in EPI or  
186 EEPI).

187 RSV, Mumps virus and Influenza virus H3N2 satisfied the HP-NEPI classification criteria in both  
188 the longitudinal and inpatient cohorts, with 12-month antibody seroprevalence of 57.4% and  
189 56% respectively for RSV, 32% and 31% respectively for Mumps virus and 37% and 25%  
190 respectively for H3N2 influenza. By 24 months of age, RSV seroprevalence had increased to  
191 76.5% in the longitudinal cohort, while Mumps and H3N2 seroprevalence at this time point  
192 was 44.4% and 60.9% respectively (table 1 and figure 1). VZV seroprevalence partially satisfied  
193 these criteria, with 28% seroprevalence in the longitudinal cohort, later declining to 15% in  
194 the inpatient cohort. A similar pattern of antibody prevalence decline was observed for  
195 *Plasmodium falciparum*, whose 12-month seroprevalence the longitudinal cohort was 47%,  
196 declining to 13% in the inpatient cohort (figure 1 and figure 3). Two additional infections,  
197 *Streptococcus pneumoniae* and Rotavirus were initially categorized in the HP-NEPI with  
198 estimated 12-month seroprevalence rates of 36% and 45.9% respectively in the longitudinal  
199 cohort (figure 1 and table 2) and 18% and 27% in the inpatient cohort (figure 3) but later  
200 transitioned to the EEPI category when their respective vaccines were introduced to the local  
201 EPI schedule in 2011 and 2014 respectively.

202 The HP-NV group for which no licensed vaccines are currently available was made up of four  
203 infectious diseases, whose 12-month seroprevalence estimates were consistently above 25%  
204 in both cohorts. Norovirus (34% in both the longitudinal and inpatient cohorts),  
205 Cytomegalovirus (44.7% longitudinal cohort, 29% inpatient cohort), Coxsackie B virus (40.7%  
206 longitudinal cohort, 25% inpatient cohort) and Epstein-Barr virus (29% in both the longitudinal  
207 and inpatient cohorts) are displayed in table 2 and figure 3. For both HP-NEPI and HP-NV  
208 groups, these seroprevalence estimates rose substantially at 24 months of age (figure 1, table  
209 2 and figure 3). Several infections including *Klebsiella pneumoniae*, *Helicobacter pylori* and  
210 *Mycoplasma pneumonia* exhibited high antibody seroprevalence above the 25% threshold in



211 the inpatient cohort but lower seroprevalence below this level in the longitudinal cohort  
212 (figure 3).

213 The low prevalence (LP) group featured a variety of viral pathogens as shown in table 2,  
214 including flaviviruses such as Dengue viruses, Zika virus, Chikungunya virus, Ebola virus, West-  
215 Nile virus, tick-borne encephalitis, and yellow fever virus. Except for dengue, all other flaviviral  
216 infections had antibody prevalence below 5% at 12 months of age as shown in table 2. Twelve-  
217 month seroprevalence for dengue viruses ranged from 7% for dengue virus type 3 in the  
218 longitudinal cohort and 9% in the inpatient cohort, to 22.3% for dengue virus type 1 in the  
219 longitudinal cohort and 15% in the inpatient cohort. Among the infections studied in the LP  
220 group were seven Influenza H1N1 viruses, including the 1918 and 2009 pandemic virus  
221 strains. The seroprevalence of antibodies against all H1N1 Influenza A viruses, including the  
222 pandemic strains, was consistently below 15% at 12 months of age in both cohorts (figure 3).  
223 Other LP infections included hepatitis A, *Staphylococcus aureus*, Usutu virus, Rift valley fever  
224 virus, Astrovirus, Enterovirus 71 virus and *Leishmania donovani*, with antibody prevalence  
225 estimates at or below 3% by the end of the first year of life.

226 The EEPI group included infections whose respective vaccines are currently included in the  
227 Kenya EPI and showed consistently high seroprevalences. In the longitudinal cohort, we  
228 evaluated the antibody response against three antigenic targets in the pentavalent vaccine  
229 formulation and found antibody prevalence for *Corynebacterium diphtheriae*, *Bordetella*  
230 *pertussis* and Hepatitis B virus of 70.8%, 56.6% and 46% respectively at 12 months of age,  
231 rising to 80.5%, 66.1% and 53.6% respectively by 24 months of age (figure 2). We also  
232 examined temporal changes in antibody level to determine whether the timing of the  
233 antibody response to these antigens was consistent with vaccination or natural exposure. For  
234 all three antigens, there was a rapid rise in antibody level within the first three months of life,  
235 coinciding with the prescribed timing of 3 pentavalent vaccine doses on the local EPI schedule  
236 (6 weeks, 10 weeks, and 14 weeks) as seen in figure 2. The peak population-level antibody  
237 titre occurred shortly after the final dose, followed by a variable temporal pattern of antibody  
238 decay that was observed post peak (figure 2). Pertussis-specific titres remained stable over  
239 time, while antibodies targeting the diphtheria toxin and hepatitis B surface antigen decayed  
240 at a faster rate during follow-up but remained significantly above cord blood titre levels

241 despite the wane. Comparison of these antibody dynamics with those of unrelated antigens  
242 that are not part of the local vaccination schedule (Ebola virus, EBV and H1N1 influenza (1999)  
243 virus) showed that temporal kinetics of these alternative antibody specificities were antigen-  
244 specific and did not correspond to the scheduled timing of the three pentavalent vaccine  
245 doses (figure 2).

246

## 247 Discussion

248 The main objective of this study was to describe the contemporary landscape of paediatric  
249 infectious disease among children in a rural, sub-Saharan African setting in Kenya by estimating  
250 the antibody prevalence for a range of infectious diseases. Our data demonstrate a  
251 considerable and sustained local infection burden from several vaccine preventable diseases  
252 in the first year of life including RSV, Mumps virus and H3N2 influenza. Just under 60% of  
253 infants in both the longitudinal birth cohort and the inpatient cohort had detectable serum  
254 antibody against RSV at twelve months of age, rising to around 80% seroprevalence by their  
255 second birthday. RSV is the most important cause of severe childhood respiratory illness in  
256 the world<sup>9</sup>, with the mortality burden being disproportionately borne by children in low-  
257 resource settings<sup>10</sup> due to poor healthcare infrastructure for the supportive care of critically  
258 ill children, including supplemental oxygen and mechanical ventilation. A new maternal  
259 vaccine against RSV with a reported efficacy of 82% against severe disease in the first 3  
260 months<sup>11</sup> of life has recently been approved by the Food and Drug administration (FDA) in the  
261 United States<sup>12</sup> and the European Medicines Agency<sup>13</sup>. While extensive surveillance studies  
262 in the United States and Europe have long established the health and economic burden  
263 attributable to RSV in those settings, similar data in lower resource settings have been sparse.  
264 The data presented here indicates a significant infection burden due to RSV among infants in  
265 sub-Saharan Africa and contributes to the evidence base that will inform decisions on  
266 whether to introduce newly licensed maternal RSV vaccines in these settings. Our data aligns  
267 with longitudinal birth cohort studies in the United States which demonstrated 68% and 82%  
268 antibody prevalence against RSV at the end of the first and second years of life respectively.<sup>14</sup>

269

270 Around a third of infants in both study cohorts had serologic evidence of mumps infection at  
271 12 months of age rising to about 44% by their second birthday. Mumps is a highly contagious

272 febrile infection, that can lead to potentially debilitating sequelae including meningitis,  
273 hydrocephalus, pancreatitis, and hearing loss.<sup>15</sup> A safe and highly effective vaccine against  
274 mumps has been available since the 1960s, initially as a stand-alone vaccine and later as a  
275 multivalent formulation comprising measles, mumps, and rubella virus antigens.<sup>16</sup> Our data  
276 indicate a substantial local burden of natural mumps infection in Kenyan children and provide  
277 rationale for vaccine introduction in the local paediatric immunization schedule to address  
278 this sizeable infection burden.

279

280 Our analysis of influenza infection in infants and young children found a high prevalence of  
281 antibodies to H3N2 influenza and a low prevalence of H1N1-specific antibodies. We found  
282 uniformly low prevalence of antibodies specific to broad range of H1N1 strains, including the  
283 1918 and 2009 pandemic strains as well as seasonal H1N1 strains isolated in 1933, 1934, 1977,  
284 1999 and 2006. These observations align with results from previous studies of African  
285 children, where the incidence of seasonal H1N1 influenza infection in infancy was reported  
286 to be around 6 per 10,000 infants.<sup>17,18</sup> We identified a much greater prevalence of antibodies  
287 against the H3N2 strain of seasonal influenza, with antibody prevalence remaining above 25%  
288 in both study cohorts at 12 months of age. Paediatric influenza vaccines licenced for use in  
289 children over six months have been available for several years now. Although many studies in  
290 this population have demonstrated a clear benefit of vaccination against severe disease,<sup>19</sup>  
291 vaccine evaluation studies have shown modest vaccine effectiveness of seasonal influenza  
292 vaccination in children, particularly against the H3N2 strain of the virus.<sup>20,21</sup>

293

294 For some pathogens, we found a shifting pattern of antibody prevalence over time. For  
295 example, antibody prevalence for *Plasmodium falciparum* was initially 47% in the longitudinal  
296 cohort which was sampled between 2002 and 2008 but later declined to 13% in the inpatient  
297 cohort (sampled between 2006 and 2017). This decay in antibody prevalence corresponds  
298 with documented evidence of a local decline in malaria disease burden in infants during that  
299 period. The proportion of infants admitted to hospital in Kilifi Kenya with a positive *P.*  
300 *falciparum* test declined from over 50% in the early 2000s to less than 10% by 2014.<sup>22</sup> Our  
301 data therefore largely confirm these temporal changes in the local paediatric disease burden  
302 attributable to falciparum malaria and indicates that this serological approach would be  
303 useful in measuring future changes in disease trends at the population level.

304

305 We also detected a change in antibody prevalence for two infections whose vaccines were  
306 not part of the local immunization schedule at the time of sampling the longitudinal cohort,  
307 but that were later introduced soon after the initiation of inpatient cohort sampling. The  
308 decline in prevalence of antibodies against *S. pneumoniae* from 36% in the longitudinal cohort  
309 to 18% in the inpatient cohort and from 36.3% to 27% for Rotavirus, corresponds with the  
310 introduction of highly effective vaccines for these targets into the local EPI schedule in 2011<sup>23</sup>  
311 and 2014<sup>24</sup> respectively.

312

313 A limitation of our study is that the demographics of the inpatient cohort differ from the birth  
314 cohort in that the median age is younger (7.2 months), with a range of 0-5 years. The birth  
315 cohort were tracked at regular intervals to 24 months of age mapping seroprevalence trends  
316 over the first two years of life. While the inpatient group represents a contemporary glimpse  
317 into childhood seroprevalence of infection, direct comparison of data between the cohorts  
318 should be interpreted in a conservative manner. Group B streptococcus antibody was not  
319 included as a for target for serological analysis within this study and represents a potential future  
320 research opportunity.

321

322 Our study found a high antibody prevalence for several infections against which no licensed  
323 vaccines currently exist. Notable among these were EBV, the cause of infectious  
324 mononucleosis<sup>25</sup> and malignant Burkitt's lymphoma,<sup>26</sup> CMV which causes congenital infection  
325 associated with severe neurological sequelae including sensorineural hearing loss and  
326 cognitive impairment<sup>27,28</sup> and Coxsackie B virus whose symptoms range from acute febrile  
327 manifestations to myocarditis.<sup>29</sup> In addition to these infections, we found that more than a  
328 third of infants in both study cohorts had antibodies against Norovirus, a highly contagious  
329 cause of acute severe gastroenteritis.<sup>25</sup> Since the introduction of effective rotavirus vaccines,  
330 norovirus has become the leading cause of vomiting and diarrhea in many countries around  
331 the world.<sup>30</sup> By establishing the considerable burden of disease attributable to these  
332 infections, our data supports the case for increased investment in vaccine research and  
333 development as well as broader surveillance in diverse populations, particularly in low  
334 resource settings. In contrast to these infections, we found a low prevalence of antibodies to

335 a range of infections, including most flaviviruses, *Staphylococcus aureus*, Enterovirus 71 and  
336 *Leishmania donovani*.

337

338 Finally, our assessment of the temporal kinetics of antibodies specific to three vaccine  
339 antigens in the pentavalent vaccine showed a population-level increase in the titre of  
340 antibodies against diphtheria, Hepatitis B and *Bordetella pertussis* that coincided with the  
341 prescribed age for pentavalent vaccine dosing at 6, 10 and 14 weeks. The estimated  
342 seroprevalence at 12 months was highest for diphtheria at around 71%, followed by pertussis  
343 and hepatitis B at 56.7% and 46% respectively. Since these antigens are delivered in a single  
344 formulation, the variable antibody prevalence estimates might be explained by several factors  
345 including differential background rates natural infection, varying propensities for immune  
346 stimulation and differential rates of post-vaccination antibody decay. Even by adopting the  
347 most sanguine interpretation of these data, that the estimated seroprevalence of diphtheria  
348 (71%) reflects true vaccine coverage, the data indicate that a substantial proportion of infants  
349 remain unprotected by the end of infancy, thereby providing a justification for more detailed  
350 assessment of suboptimal immunization in children from such settings.

351

352 In summary, our research advocates for the urgent introduction of vaccines against RSV,  
353 mumps and seasonal influenza into the local immunization schedule. In the case of RSV,  
354 maternal vaccination should be paired long-acting immunoprophylactic monoclonal  
355 antibodies to provide extended protection to the end of infancy following the decay of  
356 maternal antibodies. In conclusion, our study is the first major multi-target sero-surveillance  
357 study in African children and the results provide the evidence base to reconsider priorities for  
358 the development and introduction of vaccines for a low resource setting in sub-Saharan  
359 Africa.

360

361

362

## 363 References

- 364 1. Sharrow D, Hug L, You D, et al. Global, regional, and national trends in under-5  
365 mortality between 1990 and 2019 with scenario-based projections until 2030: a systematic  
366 analysis by the UN Inter-agency Group for Child Mortality Estimation. *The Lancet Global*  
367 *health* 2022; **10**(2): e195-e206.
- 368 2. Nanyingi MO, Munyua P, Kiama SG, et al. A systematic review of Rift Valley Fever  
369 epidemiology 1931-2014. *Infect Ecol Epidemiol* 2015; **5**: 28024.
- 370 3. Chathappady House NN, Palissery S, Sebastian H. Corona Viruses: A Review on SARS,  
371 MERS and COVID-19. *Microbiol Insights* 2021; **14**: 11786361211002481.
- 372 4. Chinedu Eneh S, Uwishema O, Nazir A, et al. Chikungunya outbreak in Africa: a review  
373 of the literature. *Ann Med Surg (Lond)* 2023; **85**(7): 3545-52.
- 374 5. Jacob ST, Crozier I, Fischer WA, 2nd, et al. Ebola virus disease. *Nat Rev Dis Primers*  
375 2020; **6**(1): 13.
- 376 6. Baud D, Gubler DJ, Schaub B, Lanteri MC, Musso D. An update on Zika virus infection.  
377 *Lancet (London, England)* 2017; **390**(10107): 2099-109.
- 378 7. Coates MM, Ezzati M, Robles Aguilar G, et al. Burden of disease among the world's  
379 poorest billion people: An expert-informed secondary analysis of Global Burden of Disease  
380 estimates. *PloS one* 2021; **16**(8): e0253073.
- 381 8. Ohuma EO, Okiro EA, Ochola R, et al. The natural history of respiratory syncytial virus  
382 in a birth cohort: the influence of age and previous infection on reinfection and disease.  
383 *American journal of epidemiology* 2012; **176**(9): 794-802.
- 384 9. Shi T, McAllister DA, O'Brien KL, et al. Global, regional, and national disease burden  
385 estimates of acute lower respiratory infections due to respiratory syncytial virus in young  
386 children in 2015: a systematic review and modelling study. *Lancet (London, England)* 2017.
- 387 10. Nair H, Nokes DJ, Gessner BD, et al. Global burden of acute lower respiratory infections  
388 due to respiratory syncytial virus in young children: a systematic review and meta-analysis.  
389 *Lancet (London, England)* 2010; **375**(9725): 1545-55.
- 390 11. Kampmann B, Madhi SA, Munjal I, et al. Bivalent Prefusion F Vaccine in Pregnancy to  
391 Prevent RSV Illness in Infants. *The New England journal of medicine* 2023; **388**(16): 1451-64.
- 392 12. FDA. FDA Approves First Vaccine for Pregnant Individuals to Prevent RSV in Infants.  
393 2023. [https://www.fda.gov/news-events/press-announcements/fda-approves-first-vaccine-](https://www.fda.gov/news-events/press-announcements/fda-approves-first-vaccine-pregnant-individuals-prevent-rsv-infants)  
394 [pregnant-individuals-prevent-rsv-infants](https://www.fda.gov/news-events/press-announcements/fda-approves-first-vaccine-pregnant-individuals-prevent-rsv-infants) (accessed 29 August 2023 2023).
- 395 13. EMA. First RSV vaccine to protect infants up to 6 months of age and older adults. 2023.  
396 [https://www.ema.europa.eu/en/news/first-rsv-vaccine-protect-infants-6-months-age-](https://www.ema.europa.eu/en/news/first-rsv-vaccine-protect-infants-6-months-age-older-adults#:~:text=EMA%20has%20recommended%20granting%20a,respiratory%20syncytial%20Ovirus%20(RSV))  
397 [older-](https://www.ema.europa.eu/en/news/first-rsv-vaccine-protect-infants-6-months-age-older-adults#:~:text=EMA%20has%20recommended%20granting%20a,respiratory%20syncytial%20Ovirus%20(RSV))  
398 [adults#:~:text=EMA%20has%20recommended%20granting%20a,respiratory%20syncytial%20](https://www.ema.europa.eu/en/news/first-rsv-vaccine-protect-infants-6-months-age-older-adults#:~:text=EMA%20has%20recommended%20granting%20a,respiratory%20syncytial%20Ovirus%20(RSV))  
399 [Ovirus%20\(RSV\)](https://www.ema.europa.eu/en/news/first-rsv-vaccine-protect-infants-6-months-age-older-adults#:~:text=EMA%20has%20recommended%20granting%20a,respiratory%20syncytial%20Ovirus%20(RSV)). (accessed 29 August 2023 2023).
- 400 14. Glezen WP, Taber LH, Frank AL, Kasel JA. Risk of primary infection and reinfection with  
401 respiratory syncytial virus. *American journal of diseases of children (1960)* 1986; **140**(6): 543-  
402 6.
- 403 15. Rubin S, Eckhaus M, Rennick LJ, Bamford CG, Duprex WP. Molecular biology,  
404 pathogenesis and pathology of mumps virus. *J Pathol* 2015; **235**(2): 242-52.
- 405 16. Kowalzik F, Faber J, Knuf M. MMR and MMRV vaccines. *Vaccine* 2018; **36**(36): 5402-7.
- 406 17. Fell DB, Johnson J, Mor Z, et al. Incidence of laboratory-confirmed influenza disease  
407 among infants under 6 months of age: a systematic review. *BMJ open* 2017; **7**(9): e016526.

- 408 18. Onyango CO, Njeru R, Kazungu S, et al. Influenza surveillance among children with  
409 pneumonia admitted to a district hospital in coastal Kenya, 2007-2010. *The Journal of*  
410 *infectious diseases* 2012; **206 Suppl 1**: S61-7.
- 411 19. Olson SM, Newhams MM, Halasa NB, et al. Vaccine Effectiveness Against Life-  
412 Threatening Influenza Illness in US Children. *Clinical infectious diseases : an official publication*  
413 *of the Infectious Diseases Society of America* 2022; **75**(2): 230-8.
- 414 20. Chiu SS, Kwan MYW, Feng S, et al. Influenza Vaccine Effectiveness Against Influenza  
415 A(H3N2) Hospitalizations in Children in Hong Kong in a Prolonged Season, 2016/2017. *The*  
416 *Journal of infectious diseases* 2018; **217**(9): 1365-71.
- 417 21. Hood N, Flannery B, Gaglani M, et al. Influenza Vaccine Effectiveness Among Children:  
418 2011-2020. *Pediatrics* 2023; **151**(4).
- 419 22. Mogeni P, Williams TN, Fegan G, et al. Age, Spatial, and Temporal Variations in  
420 Hospital Admissions with Malaria in Kilifi County, Kenya: A 25-Year Longitudinal Observational  
421 Study. *PLoS medicine* 2016; **13**(6): e1002047.
- 422 23. Hammitt LL, Akech DO, Morpeth SC, et al. Population effect of 10-valent  
423 pneumococcal conjugate vaccine on nasopharyngeal carriage of *Streptococcus pneumoniae*  
424 and non-typeable *Haemophilus influenzae* in Kilifi, Kenya: findings from cross-sectional  
425 carriage studies. *The Lancet Global health* 2014; **2**(7): e397-405.
- 426 24. Wandera EA, Mohammad S, Bundi M, et al. Impact of rotavirus vaccination on  
427 rotavirus hospitalisation rates among a resource-limited rural population in Mbita, Western  
428 Kenya. *Tropical medicine & international health : TM & IH* 2018; **23**(4): 425-32.
- 429 25. Lopman BA, Steele D, Kirkwood CD, Parashar UD. The Vast and Varied Global Burden  
430 of Norovirus: Prospects for Prevention and Control. *PLoS medicine* 2016; **13**(4): e1001999.  
431

432 Tables

433

434

435

436

437

438

439

440

441

442

	<b>Longitudinal cohort (KBC)</b>	<b>Inpatient cohort (IP)</b>
Number of children in cohort	124	176
Recruitment dates	28 <sup>th</sup> Jan 2002- 25 <sup>th</sup> Nov 2008	20 <sup>th</sup> Dec 2006 – 10 <sup>th</sup> June 2017
Average number of samples per child (range)	8 (5 – 11)	1
Median age in months at recruitment (range)	0	7.2 (0-57)
Median age at exit from cohort (range)	23 (8.3 – 30.2)	NA
Total serum samples tested	958	176

443 **Table 1**

444 Demographics and patient sampling methods of both cohorts within the study.

445 Each participant in the longitudinal birth cohort had cord blood collected at birth, followed  
446 by repeated serum sampling at three-monthly intervals. The inpatient cohort (IP) had serum  
447 from each child sampled at single time point during a hospital admission and assayed for  
448 antibodies against the same set of infectious disease pathogens.



Antigen code	Pathogen	Seroprevalence at 12 months (95% CI)	Seroprevalence at 24 months (95% CI)	Group
EBOVZAIRE	Ebola virus – Zaire strain	0 (0-0)	0 (0-0)	LP
YFVNS1A	Yellow fever virus	0 (0-0)	1.1 (0-3.2)	LP
JEVNS1	Japanese Encephalitis virus	0.8 (0-2.4)	2.5 (0-5.3)	LP
TBENS1	Tick-borne encephalitis virus	1.6 (0-3.9)	2.5 (0-5.3)	LP
HEPAV	Hepatitis A virus	0.8 (0-2.4)	2.7 (0-5.6)	LP
H1N1_HA.1934	Influenza A (H1N1 1934)	1.7 (0-3.9)	2.7 (0-5.6)	LP
SAURENTOXA	Staphylococcus aureus	0.8 (0-2.4)	2.7 (0-5.7)	LP
H1N1_HA.2006	Influenza A (H1N1 2006)	1.7 (0-4.1)	2.8 (0-5.9)	LP
H1N1_HA.1977	Influenza A (H1N1 1977)	1.7 (0-4.1)	2.8 (0-5.9)	LP
CCHIKVE1	Chikungunya virus	0.8 (0-2.5)	2.9 (0-6.1)	LP
ASTROVT1	Astrovirus	2.5 (0-5.3)	3.5 (0.1-6.8)	LP
H1N1_HA.1999	Influenza A (H1N1 1999)	2.6 (0-5.5)	3.7 (0.1-7.2)	LP
WNVNS1	West Nile virus	2.4 (0-5.1)	4.1 (0.5-7.6)	LP
LEISHDON	Leishmania donovani	3.4 (0.1-6.6)	4.3 (0.5-7.9)	LP
RVFGC	Rift valley fever virus	1.7 (0-3.9)	4.8 (0.6-8.8)	LP
USUVNS1	Usutu virus	1.6 (0-3.8)	5.2 (1-9.1)	LP
H1N1_HA.1933	Influenza A (H1N1 1933)	1.7 (0-4)	5.4 (1.1-9.5)	LP
EV71ETOX	Enterovirus 71	3.4 (0.1-6.5)	5.4 (1.1-9.6)	LP

H1N1_HA.1918	Influenza A (H1N1 1918)	3.4 (0.1-6.6)	6.2 (1.6-10.6)	LP
H1N1_HA.2009	Influenza A (H1N1 2009)	4.3 (0.5-7.9)	7.3 (2.3-12.1)	LP
ZIKVNS1	Zika virus	3.4 (0.1-6.6)	7.5 (2.3-12.4)	LP
STYPHH	Salmonella enterica (serovar typhi)	5 (1-8.8)	9.6 (4-14.8)	LP
HSV1EXT	Herpes simplex virus 1	2.7 (0-5.6)	10.2 (4.3-15.8)	LP
DENG3NS1	Dengue virus Type 3	7 (2.2-11.5)	10.9 (4.9-16.6)	LP
CHLAMPNEU	Chlamydia pneumoniae	6.7 (2.1-11.1)	11.5 (5.4-17.2)	LP
TOXOPGON	Toxoplasma gondii	6.9 (2.2-11.4)	12.4 (6.1-18.4)	LP
PARVO1	Parvovirus 1	7.7 (2.7-12.4)	14.5 (7.6-20.8)	LP
NGARIV	Ngari virus	8.5 (3.3-13.4)	15.8 (8.8-22.2)	LP
CLOSTDEF	Clostridium difficile	17.2 (9.8-23.9)	23.9 (14.9-31.8)	LP
DENG4NS1	Dengue virus Type 4	15.9 (8.7-22.6)	24.7 (15.5-32.9)	LP
VZV	Varicella zoster virus	28.3 (19.3-36.3)	32.3 (22.9-40.6)	HP-NEPI
DENG1NS1	Dengue virus Type 1	22.3 (13.8-29.9)	33.8 (23.4-42.8)	LP
EBV	Epstein-Barr virus	29.3 (20.2-37.3)	41.9 (31.7-50.6)	HP-NV
MUMPSV	Mumps virus	31.5 (22.4-39.5)	44.4 (34.1-53)	HP-NEPI
KLEBPNEU	Klebsiella pneumoniae	32.4 (22.7-40.9)	44.6 (33.7-53.7)	HP-NV
HPYLOR	Helicobacter pylori	35 (25.1-43.6)	45.6 (34.9-54.6)	HP-NV
ROTAVP6	Rotavirus	36.3 (25.6-45.5)	49 (37.5-58.4)	HP-NEPI-CEPI*
NOROVGRP2	Norovirus	34.2 (24.8-42.5)	51.9 (40.9-60.9)	HP-NV

CMVPP52	Cytomegalovirus	44.7 (33.5-54)	54.2 (42.6-63.5)	HP-NV
MYCPNEU2	Mycoplasma pneumoniae	45.7 (35-54.6)	56.6 (45.5-65.4)	HP-NV
COXSACB1	Coxsackie B	40.7 (29.1-50.4)	58.8 (46-68.7)	HP-NV
H3N2	Influenza A (H3N2 1999)	37.3 (27-46.2)	60.9 (49.5-69.8)	HP-NEPI
SPNEUMO	Streptococcus pneumoniae	45.9 (33.8-55.7)	64.1 (51.8-73.3)	HP-NEPI-CEPI*
PFALHSP	Plasmodium falciparum	47 (35.8-56.2)	69.9 (57.5-78.6)	HP-NEPI
RSVAF	Respiratory syncytial virus	57.4 (46.9-70.3)	76.5 (68-88.8)	HP-NV

449

450

451 **Table 2**

452 Table 2 lists the pathogens assayed and the associated 12- and 24-month seroprevalence for  
453 each. The clinical sub-group is denoted beside each target.

454 LP=Low Prevalence, HP-NEPI=High Prevalence-National Expanded Programme on

455 Immunization, EEPI=Established Expanded Programme on Immunization, HP-NV=High

456 Prevalence-No Vaccination

457

458

459

460

461

462

463

464

465

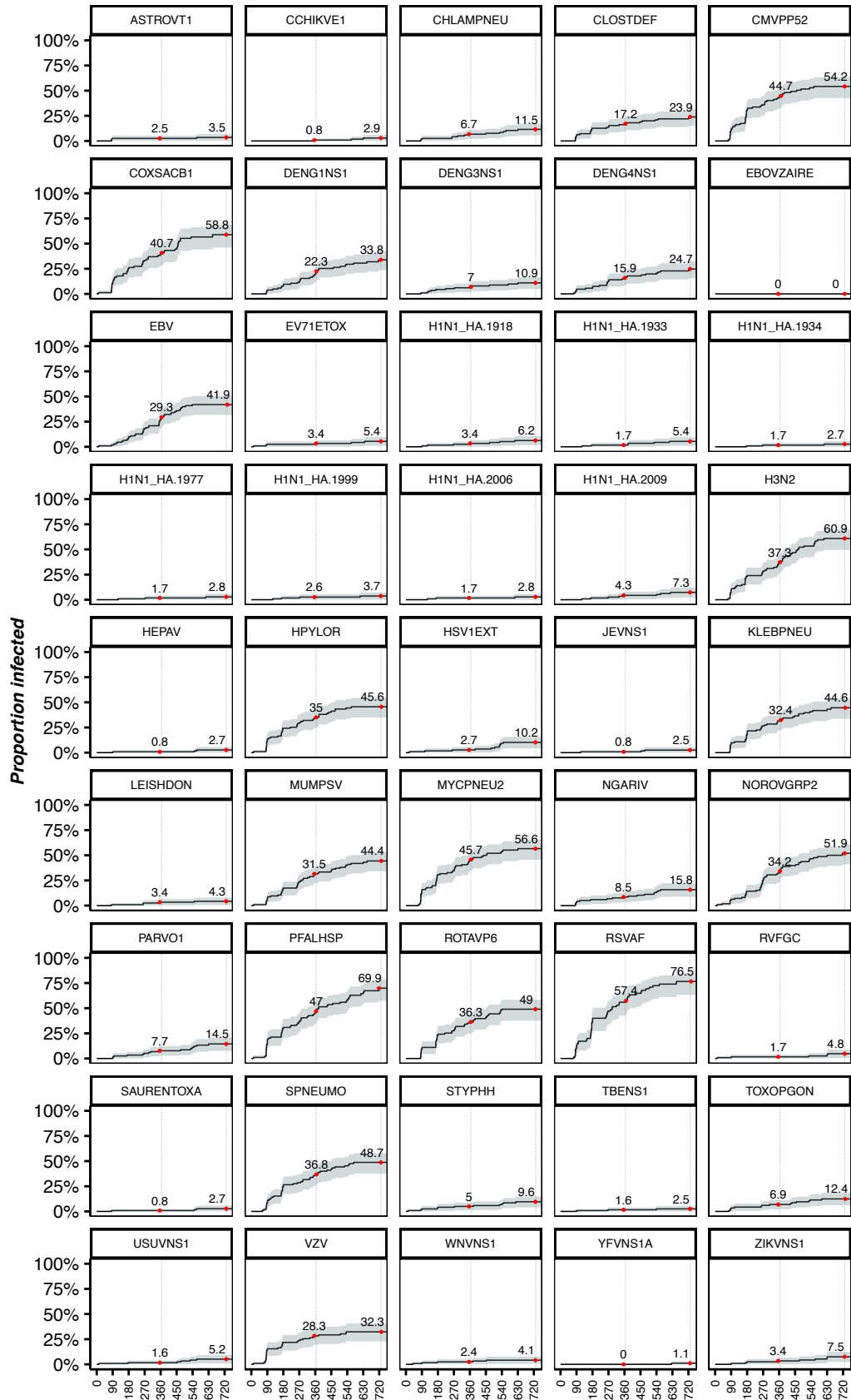
466

467

468

469

**Figures**



470

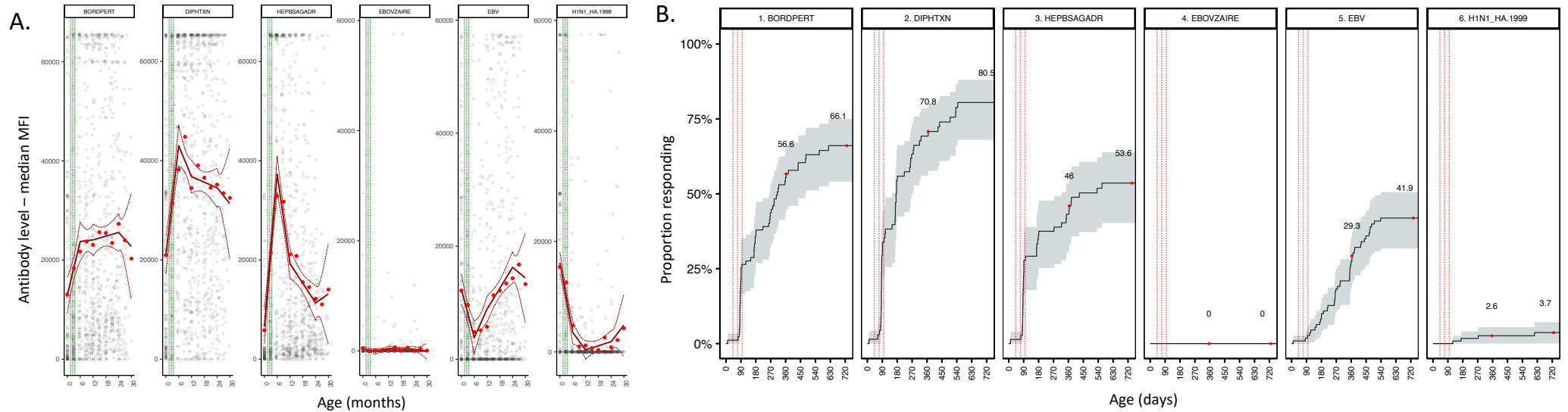
471

**Figure 1**

472 Reverse Kaplan-Meier survival curve demonstrating cumulative antibody prevalence for  
473 each target within the panel of infectious diseases pathogens featured on the protein  
474 array over a two-year period. The red dots indicate seroprevalence at 12- and 24- months  
475 withing the longitudinal cohort. Each curve measures the proportion of population  
476 infected (Y-axis) with age in days (X-axis).  
477

478

479



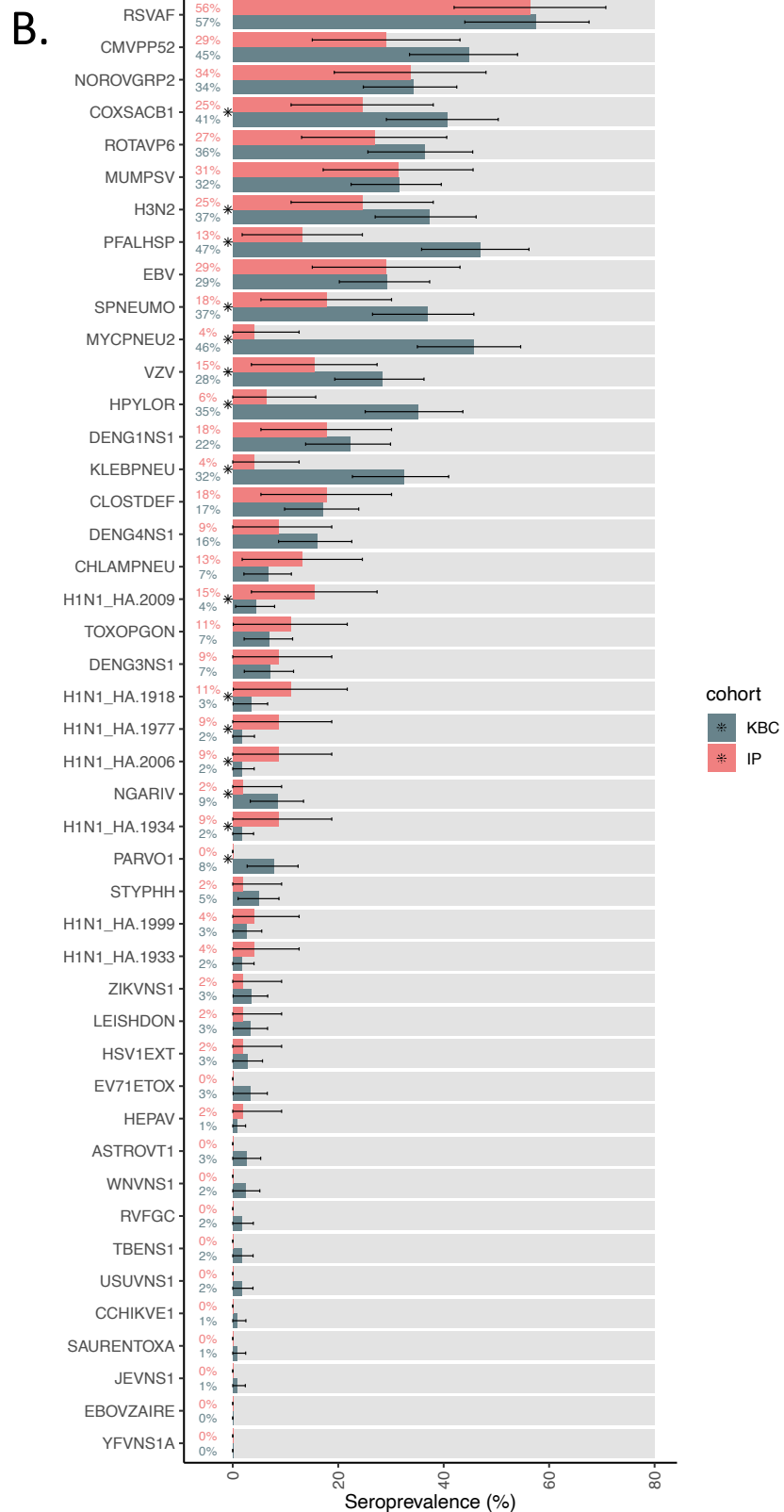
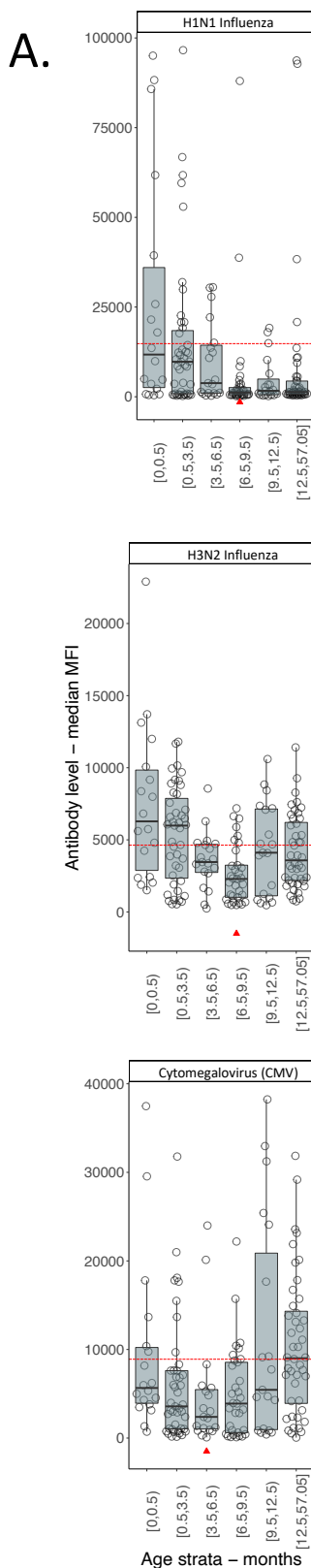
481 **Figure 2**

482 **Figure 2A.** Antibody trends measured in mean fluorescent intensity (MFI) using linear spline modelling. A rise in MFI levels follows immunization  
483 or natural infection. An initial fall of MFI after birth represents maternal antibody decay in targets with high population seroprevalence. A later  
484 fall in MFI suggests a waning of antibody response. The vertical green lines indicate timepoints of pentavalent vaccination. Dashed red lines  
485 represent 95% CI.

486 **Figure 2B.** Reverse Kaplan-Meier plot survival curve demonstrating the cumulative proportion of the cohort responding to immunization or  
487 exposure to the same targets as fig. 2A over the first two years of life. Red dots indicate 12- and 24-month timepoints. Dashed red lines  
488 indicate pentavalent vaccination.

489

490



491

492

493

494 **Figure 3**

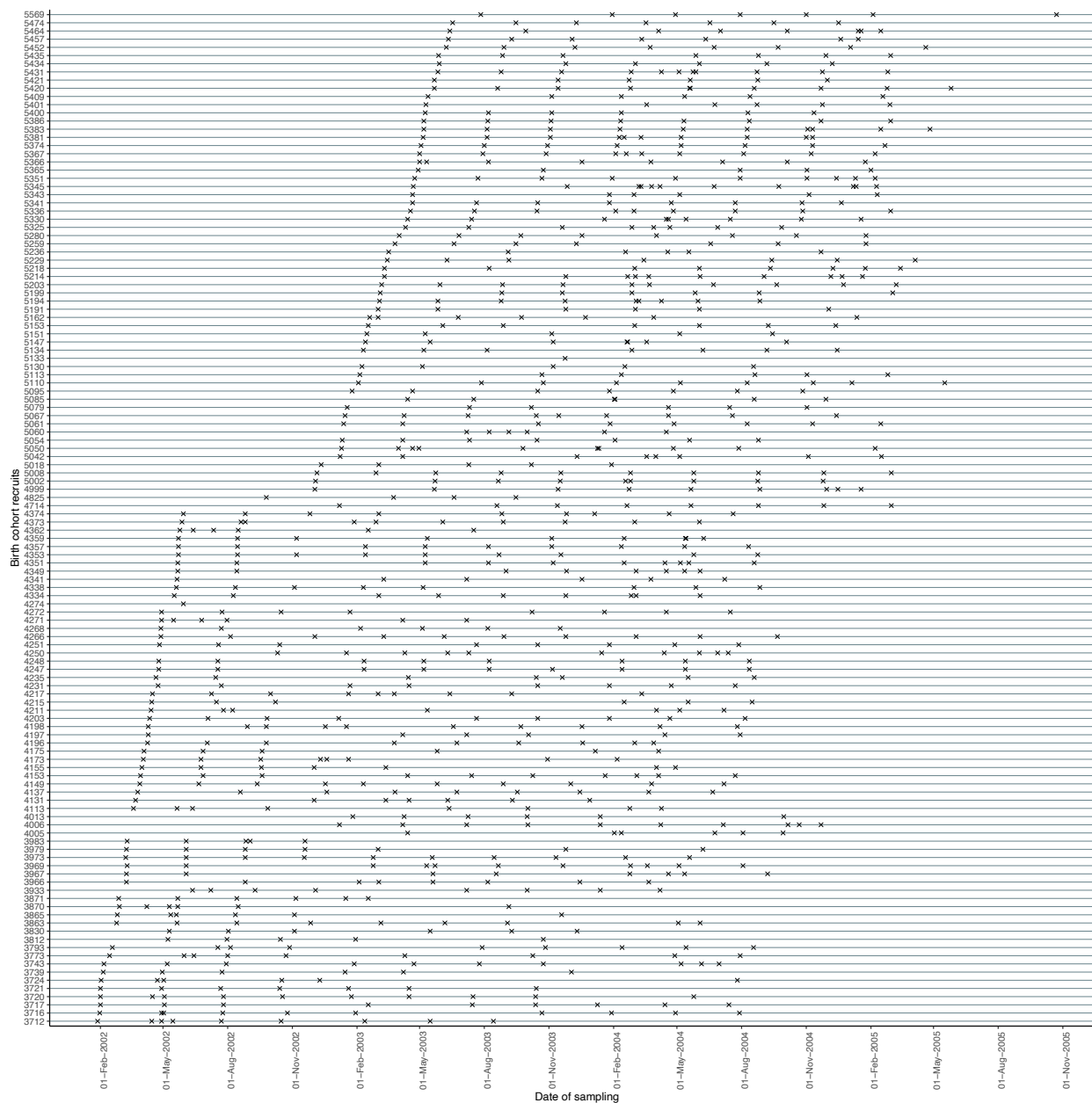
495 **Figure 3A** – Inpatient cohort antibody response to three targets i) influenza H1N1, ii) influenza  
496 H3N2, and iii) CMV. Antibody values are measured using mean fluorescent intensity (MFI).  
497 The horizontal axis stratifies patients by age in months, up to five years of age. The red  
498 triangles denote the mean of the seronegative group in each figure. The dashed red line  
499 denotes seroconversion, ie two standard deviations above the median antibody level of the  
500 seronegative stratum.

501

502 **Figure 3B** - Horizontal bar chart contrasting both the longitudinal and inpatient cohort specific  
503 antibody response. (CI 95%). The pathogens are labelled in code available in Supplementary  
504 table 1.



505 Supplementary figures



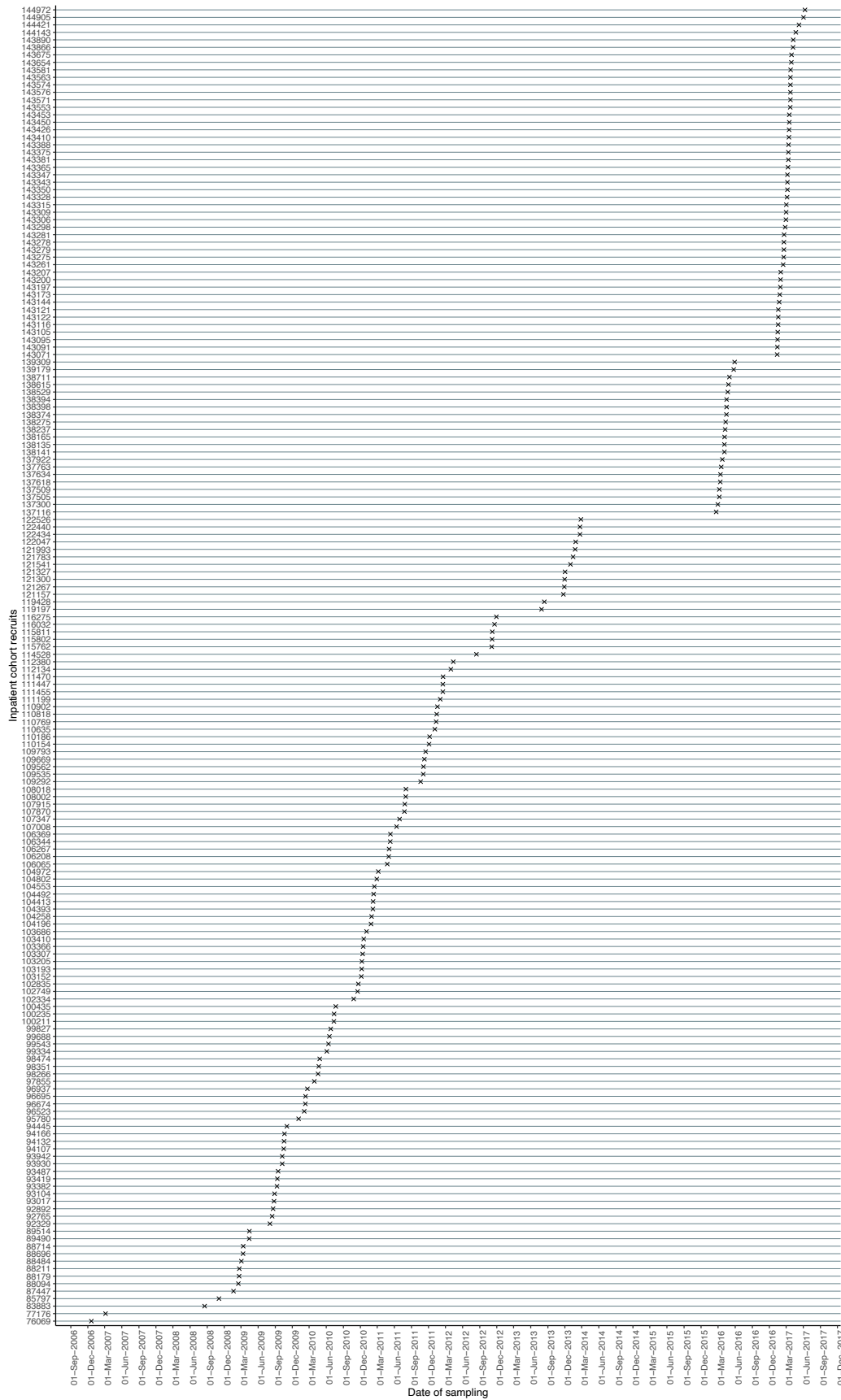
506

507

508 **Supplementary figure 1**

509 Time points at which data was collected on each individual patient within the longitudinal  
510 cohort recruited between 2002 and 2005.

511 The vertical axis uses the study number of each recruit. The first 'x' on the horizontal line  
512 designated to each recruit represents cord blood sampling at birth, followed by repeated  
513 serum sampling at approximate three-month intervals until children were aged about thirty  
514 months of age. The y-axis contains anonymized codes that are delinked from personally  
515 identifiable participant data.



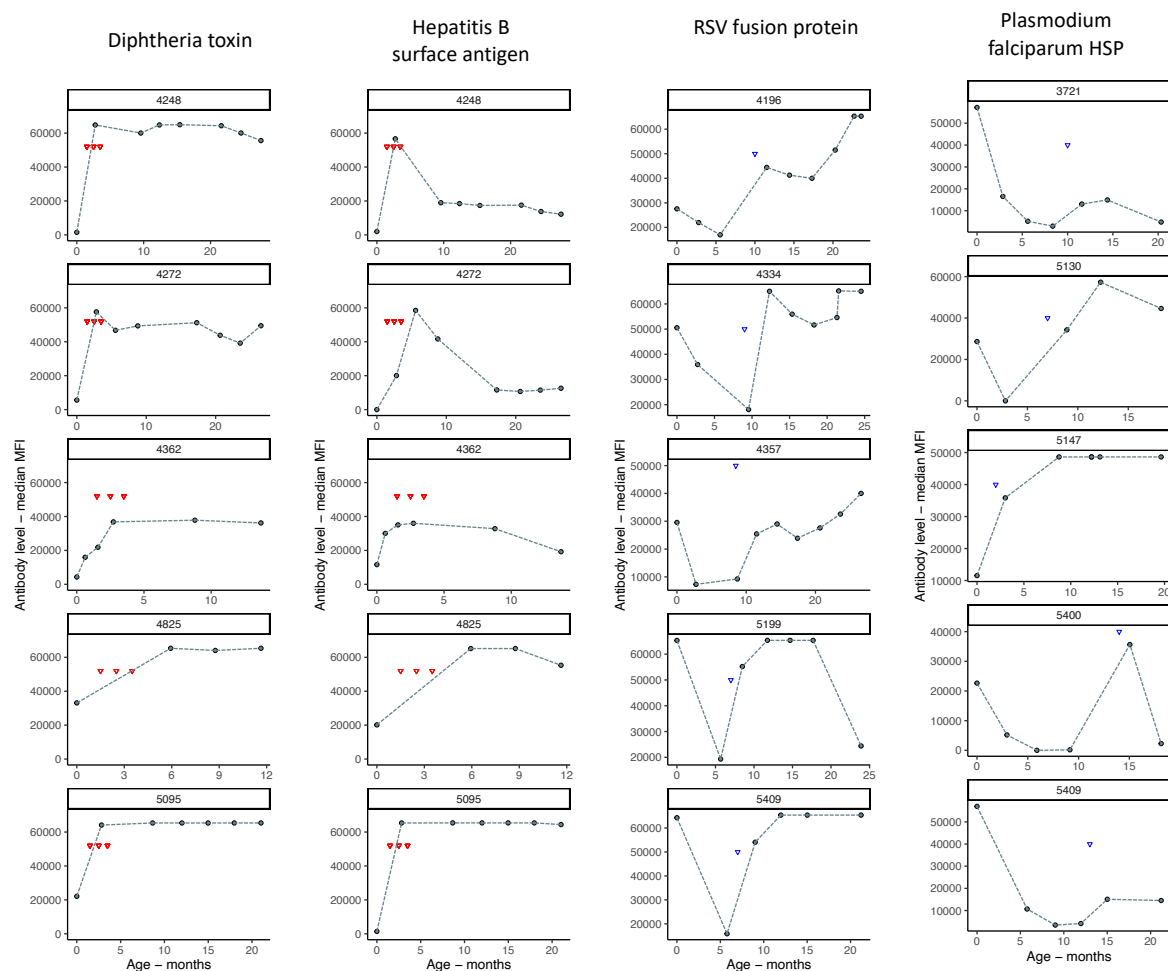
516

517 **Supplementary figure 2**

518 Inpatient cohort comprising of paediatric inpatients admitted to Kilifi County Hospital  
519 between 2006 and 2017 with a variety of infectious and non-infectious illnesses. One  
520 serological sample was taken at a single time point during admission for medical care. The y-  
521 axis contains anonymized codes that are delinked from personally identifiable participant  
522 data.

523

524



525

526

527

### 528 **Supplementary figure 3**

529 Supplementary figure 3 illustrates our validation approach using diphtheria toxin, hepatitis B  
530 surface antigen, RSV fusion protein and plasmodium falciparum HSP. The serological  
531 definition of an infection was an increase of  $\geq 4000$  antibody units (expressed as MFI) between  
532 two serial timepoints, and sustained in the subsequent two time points. Each red triangle  
533 correlates to the timing of each dose of pentavalent vaccination. The purple triangle indicates  
534 the timepoint at which natural infection occurred. Panel headings contain anonymized codes  
535 that are delinked from personally identifiable participant data.

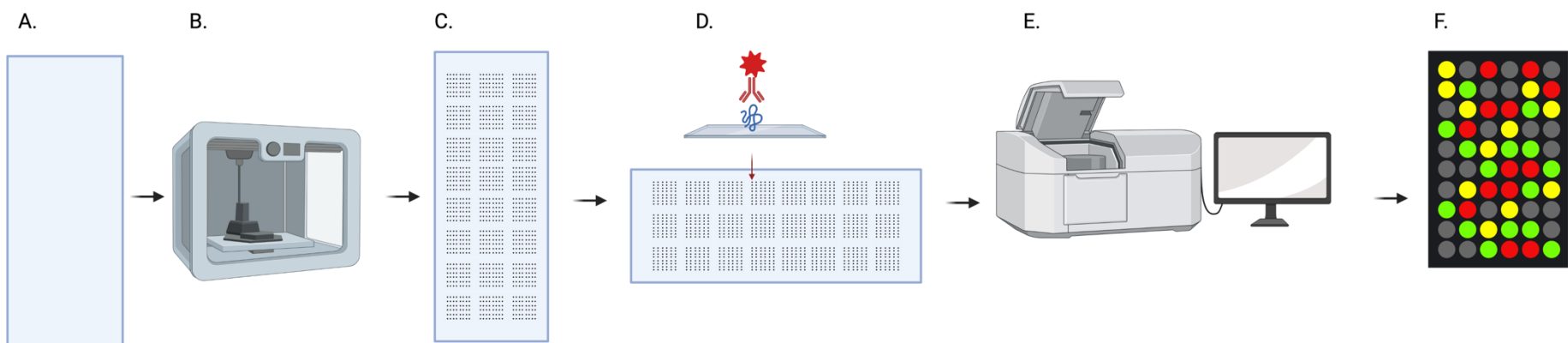
536

537

538

539

540



541

542

543 **Supplementary figure 4**

544 The design of the microarray chip and the analytical sample workflow.

545 Supplementary table

<b>ID</b>	<b>Pathogen</b>	<b>Strain/subtype</b>	<b>Antigen</b>	<b>Antigen Code</b>
1	Astrovirus	Type 1 strain A88/2	Extract	ASTROVT1
2	Bordetella pertussis		Pertactin	BORDPERT
3	Chikungunya virus		E1	CCHIKVE1
4	Chlamydia pneumoniae		PmpD	CHLAMPNEU
5	Clostridium difficile		GDH	CLOSTDEF
6	Corynebacterium diphtheriae		Diphtheria toxin	DIPHTXN
7	Coxsackie B	B1	VP1	COXSACB1
8	Cytomegalovirus		PP52	CMVPP52
9	Dengue virus	Type 1	NS1	DENG1NS1
	Dengue virus	Type 3	NS1	DENG3NS1
	Dengue virus	Type 4	NS1	DENG4NS1
10	Ebola virus	Zaire strain	NP	EBOVZAIRE
11	Enterovirus 71		Toxin	EV71ETOX
12	Epstein-Barr virus		Nuclear antigen 1	EBV
13	Helicobacter pylori		Hp bacterial antigen	HPYLOR
14	Hepatitis A virus		HAVCR2	HEPAV
15	Hepatitis B virus		Surface antigen AD	HEPBSAGADR
16	Herpes simplex virus	Type 1	Extract	HSV1EXT
17	Influenza A	A/WSN/1933	Haemagglutinin	H1N1_HA.1933
	Influenza A	A/New Caledonia/20/1999	Haemagglutinin	H1N1_HA.1999
	Influenza A	A/California/07/2009	Haemagglutinin	H1N1_HA.2009
	Influenza A	A/USSR/90/1977	Haemagglutinin	H1N1_HA.1977
	Influenza A	A/Panama/2007/1999	Haemagglutinin	H3N2.1999
	Influenza A	A/Solomon Islands/3/2006	Haemagglutinin	H1N1_HA.2006

ID	Pathogen	Strain/subtype	Antigen	Antigen Code
	Influenza A	A/Brevig Mission/1/1918	Haemagglutinin	H1N1_HA.1918
	Influenza A	A/Puerto Rico/8/1934	Haemagglutinin	H1N1_HA.1934
18	Klebsiella pneumoniae		oMPA	KLEBPNEU
19	Leishmania donovani		AdoMetDC	LEISHDON
20	Mumps virus	Enders	Extract	MUMPSV
21	Mycoplasma pneumoniae	FH	Extract	MYCPNEU2
22	Ngari virus		Extract	NGARIV
23	Norovirus	Type 2	VLP	NOROVGRP2
24	Parvovirus	B19	Antigen 2	PARVO1
25	Plasmodium falciparum	3D7	HSP	PFALHSP
26	Respiratory syncytial virus	Group A	Fusion protein	RSVAF
27	Rift valley fever virus		Glycoprotein	RVFGC
28	Rotavirus	P6	VP6	ROTAVP6
29	Salmonella enterica	Serovar Typhi	H protein	STYPHH
30	Staphylococcus aureus		Alpha Toxin	SAURENTOXA
31	Streptococcus pneumoniae		Pneumolysin	SPNEUMO
32	Tick-borne encephalitis virus		NS1	TBENS1
33	Toxoplasma gondii		H4	TOXOPGON
34	Usutu virus		NS1	USUVNS1
35	Varicella zoster virus	Ellen	Extract	VZV
36	West Nile virus		NS1	WNVNS1
37	Yellow fever virus		NS1	YFVNS1A
38	Zika virus		NS1	ZIKVNS1

546 **Supplementary table 1** The complete set of pathogens, strains and antigens that were tested on this platform are listed above.

547 Pathogen-specific antibodies were measured using a customized protein microarray designed to quantify serum IgG to a range of common and  
548 emerging infectious diseases.  
549