

1 **Effectiveness and cost effectiveness of a 12 month automated text message**  
2 **intervention for weight management in postpartum women with overweight or**  
3 **obesity: protocol for the Supporting MumS (SMS) multi-site, parallel-group,**  
4 **randomised controlled trial.**

5 Dunla Gallagher, Eleni Spyreli, Annie S Anderson, Sally Bridges, Chris Cardwell, Elinor  
6 Coulman, Stephan U Dombrowski, Caroline Free, Suzie Heaney, Pat Hoddinott, Frank Kee,  
7 Cliona McDowell, Emma McIntosh, Jayne V Woodside and Michelle C McKinley.

8 Correspondence to Prof Michelle McKinley; [m.mckinley@qub.ac.uk](mailto:m.mckinley@qub.ac.uk)

9

10 **Abstract**

11 Introduction

12 The reproductive years can increase women's weight-related risk. Evidence for effective  
13 postpartum weight management interventions is lacking and engaging women at this time is  
14 challenging. Following a promising pilot evaluation of the Supporting MumS intervention, we  
15 assess if theory-based and bidirectional text messages to support diet and physical activity  
16 behaviour change for weight loss and weight loss maintenance, are effective and cost-  
17 effective for weight change in postpartum women with overweight or obesity, compared with  
18 an active control arm receiving text messages on child health and development.

19

20 Methods and analysis

21 Two-arm, parallel group, assessor-blind randomised controlled trial with cost-effectiveness  
22 and process evaluations. Women (n=888) with body mass index  $\geq 25$  kg/m<sup>2</sup> and within 24  
23 months of giving birth, recruited via community and NHS pathways through five United  
24 Kingdom sites targeting areas of ethnic and socioeconomic diversity. Women are 1:1  
25 randomised to the intervention or active control groups, each receiving automated text

1

26 messages for 12 months. Data is collected at 0, 6, 12 and 24 months. The primary outcome  
27 is weight change at 12 months from baseline, compared between-groups. Secondary  
28 outcomes include weight change (24 months) and waist circumference (cm), proportional  
29 weight gain (>5kg), BMI (kg/m<sup>2</sup>), dietary intake, physical activity, infant feeding and mental  
30 health (12 and 24 months respectively). Economic evaluation examines health service usage  
31 and personal expenditure, health-related quality of life and capability wellbeing to assess  
32 cost-effectiveness over the trial and modelled lifetime. Cost-utility analysis examines cost per  
33 quality-adjusted life years gained over 24 months. Mixed method process evaluation  
34 explores participants' experiences and contextual factors impacting outcomes and  
35 implementation. Stakeholder interviews examine scale-up and implementation.

36

### 37 Ethics and dissemination

38 Ethical approval obtained before data collection (West of Scotland Research Ethics Service  
39 REC 4 22/WS/0003). Results will be published via a range of outputs and audiences.

40

41 Trial Registration [2a]: ISRCTN16299220 (prospectively registered).

42

### 43 **Strengths and Limitations**

- 44 • This is the first trial to examine the effectiveness and cost-effectiveness of a behavioural  
45 intervention for supporting weight loss in postpartum women with overweight or obesity  
46 that is delivered solely by text messages.
- 47 • The trial tests a novel evidence and theory-based text message intervention with  
48 embedded behaviour change techniques that is fully automated and incorporates two-  
49 way messaging to encourage engagement and delivery of specific behaviour change  
50 techniques.
- 51 • Researchers conducting participant recruitment and outcome data collection are blind to  
52 group allocation. Any situations where blinding is not maintained are recorded and  
53 reported. Due to the nature of the intervention, it is not possible to blind participants to  
54 randomisation.
- 55 • The trial includes an active control comparator to minimise disappointment bias and  
56 attrition related to randomisation experienced in previous weight loss intervention  
57 trials.(1)
- 58 • Home visits by the research team are offered to participants for data collection to  
59 facilitate participation in research assessments, helping to overcome barriers to taking  
60 part and address issues in participant retention seen in other postpartum trials.

61

62

63 **Administrative information**

64 This protocol is written in line with the SPIRIT checklist,(2) with recommended content  
65 indicated by the numbers in square brackets after section titles.

66 Title [1]: Effectiveness and cost effectiveness of a 12 month automated text message  
67 intervention for weight management in postpartum women with overweight or obesity:  
68 protocol for the Supporting MumS (SMS) multi-site, parallel-group, randomised controlled  
69 trial.

70 Protocol version [3]: Version 3.0 dated 10<sup>th</sup> May 2023.

71 Trial status: Opened to recruitment in April 2022, with the first participant randomised in May  
72 2022 and participant recruitment completed in May 2023. The trial is in follow-up until May  
73 2025, with primary outcome data collection to be completed in May 2024.

74 Table 1: Author details [5a]

Author details	Dr Dunla Gallagher Supporting MumS Trial Manager Centre for Public Health, Queen's University Belfast, ICSB, Grosvenor Road, Belfast, BT12 6BA <a href="mailto:d.gallagher@qub.ac.uk">d.gallagher@qub.ac.uk</a> Tel: 07341 888415
	Dr Eleni Spyreli Postdoctoral Research Fellow Centre for Public Health, Queen's University Belfast, ICSB, Grosvenor Road, Belfast, BT12 6BA <a href="mailto:Eleni.spyreli@qub.ac.uk">Eleni.spyreli@qub.ac.uk</a> Tel: 028 9097 1608

	<p>Prof Annie Anderson</p> <p>Professor of Public Health Nutrition</p> <p>Division of Population Health and Genomics, University of Dundee</p> <p>a.s.anderson@dundee.ac.uk</p> <p>Tel: +44 (0)1382 383299</p>
	<p>Ms Sally Bridges (PI SMS Bradford)</p> <p>Programme Coordinator</p> <p>Better Start Bradford Innovation Hub, Bradford</p> <p>Teaching Hospitals NHS Foundation Trust</p> <p><a href="mailto:sally.bridges@bthft.nhs.uk">sally.bridges@bthft.nhs.uk</a></p> <p>Tel: +44 (0)1274 383914</p>
	<p>Prof Chris Cardwell</p> <p>Professor of Medical Statistics</p> <p>Centre for Public Health, Queen's University Belfast</p> <p>c.cardwell@qub.ac.uk</p> <p>Tel: +44 (0)28 9063 2620</p>
	<p>Dr Elinor Coulman (PI SMS Cardiff)</p> <p>Research Fellow</p> <p>Centre for Trials Research, Cardiff University</p> <p>johne1@cardiff.ac.uk</p> <p>Tel: +44(0)29 2068 7624</p>
	<p>Assoc Prof Stephan Dombrowski</p> <p>Associate Professor in Health Psychology</p> <p>Faculty of Kinesiology, University of New Brunswick, Canada</p> <p>stephan.dombrowski@unb.ca</p>

	<p>Tel: +1 506 453 4803</p>
	<p>Prof Caroline Free (PI SMS London)</p> <p>Professor of Primary Care and Epidemiology</p> <p>Maternal, Adolescent, Reproductive &amp; Child Health,</p> <p>London School of Hygiene &amp; Tropical Medicine</p> <p><a href="mailto:caroline.free@lshtm.ac.uk">caroline.free@lshtm.ac.uk</a></p> <p>Tel: +44 (0)20 7958 8109</p>
	<p>Dr Suzie Heaney</p> <p>Personal and Public Involvement (PPI) Representative</p> <p><a href="mailto:suzieheaney@gmail.com">suzieheaney@gmail.com</a></p>
	<p>Prof Pat Hoddinott (PI SMS Scotland)</p> <p>Chair in Primary Care</p> <p>NMAHP Research Unit, University of Stirling</p> <p><a href="mailto:p.m.hoddinott@stir.ac.uk">p.m.hoddinott@stir.ac.uk</a></p> <p>Tel: +44 (0)1786 466394</p>
	<p>Prof Frank Kee</p> <p>Professor of Public Health</p> <p>Centre for Public Health, Queen's University Belfast</p> <p>F.Kee@qub.ac.uk</p> <p>Tel: +44 (0)28 9097 8943</p>
	<p>Ms Cliona McDowell</p> <p>Head of Statistics</p> <p>Northern Ireland Clinical Trials Unit (NICTU)</p> <p><a href="mailto:Cliona.mcdowell@nictu.hscni.net">Cliona.mcdowell@nictu.hscni.net</a></p> <p><u>Tel: +44 (0)28 9615 1447</u></p>
	<p>Prof Emma McIntosh</p> <p>Professor of Health Economics</p>

	<p>Institute of Health and Wellbeing, University of Glasgow</p> <p><a href="mailto:emma.mclintosh@glasgow.ac.uk">emma.mclintosh@glasgow.ac.uk</a></p> <p>Tel: +44 (0)141 3302455</p> <hr/> <p>Prof Jayne Woodside</p> <p>Professor of Human Nutrition</p> <p>Centre for Public Health, Queen's University Belfast</p> <p><a href="mailto:j.woodside@qub.ac.uk">j.woodside@qub.ac.uk</a></p> <p>Tel: +44 (0)28 9097 8942</p> <hr/> <p>Prof Michelle McKinley (CI and PI SMS Belfast)</p> <p>Professor of Nutrition</p> <p>Centre for Public Health, Queen's University Belfast</p> <p><a href="mailto:m.mckinley@qub.ac.uk">m.mckinley@qub.ac.uk</a></p> <p>Tel: +44 (0)2890978936</p>
<p>Name and contact information for the trial sponsor [5b]</p>	<p>Dr Paula Tighe</p> <p>Research Governance, Ethics and Integrity Manager</p> <p>Queen's University Belfast</p> <p><a href="mailto:p.tighe@qub.ac.uk">p.tighe@qub.ac.uk</a></p> <p>Tel: +44 (0)28 9097 3861</p>
<p>Role of sponsor and funder [5c]</p>	<p>The sponsor and funder are not responsible for the trial design, collection, management, analysis or interpretation of data or report writing. However, they oversee the trial progress, including publications.</p>

75 **Introduction**

76 Background [6a]

77 This trial addresses the development of overweight and obesity across the childbearing  
78 years. Entering pregnancy with a high body mass index (BMI) increases many health risks  
79 for these mothers and their babies, including gestational diabetes, hypertensive disorders,  
80 caesarean section and birth complications, compared with recommended weight women.(3,  
81 4, 5, 6) Excessive gestational weight gain (GWG) and postpartum weight retention (PPWR)  
82 are common (7, 8) and many women are at risk of further weight gain across the extended  
83 postpartum period.(9) By 18 months postpartum, about one in five women have moved into  
84 a higher BMI category (8) which increases the risk of complications in subsequent  
85 pregnancies and contributes to long-term overweight and obesity.(9)

86 Effective and appropriate weight management interventions in women during the postpartum  
87 period, which account for the well-recognised barriers for new mums such as time  
88 constraints and childcare, are lacking.(9, 10, 11, 12, 13, 14) Previous intervention studies  
89 are characterised by poor recruitment and high rates of attrition (1, 15, 16, 17, 18) and have  
90 not adequately considered the difficulties in reaching this population and specific barriers to  
91 lifestyle behaviour change that come with having a baby.(19, 20, 21, 22, 23) In-person and  
92 structured weight management approaches, such as those delivered in community and  
93 group settings, are unlikely to be successful with this population due to the commitment  
94 required, and such approaches may exacerbate health inequalities.(24, 25, 26, 27) More  
95 appropriate ways of recruiting and engaging with postpartum women to achieve sustained  
96 behaviour change are required (1, 9) and a need to evidence cost-effectiveness to inform  
97 implementation.(12)

98 Recent evidence, mostly from feasibility or pilot studies, indicates that technology usage  
99 shows promise in postpartum weight management, perhaps because this form of delivery fits



100 more seamlessly with women's lives at this stage.(17, 28, 29, 30) Mobile technologies can  
101 offer a more flexible and individualised 'any time, any place' approach to behavioural weight  
102 management interventions.(9) Text message interventions have high reach potential and  
103 allow for flexible scheduling and interactivity,(31) potentially making them convenient for  
104 mums with limited time and helpful for overcoming health inequalities. Systematic reviews  
105 support the use of text messaging in behavioural weight management interventions but  
106 indicate further evaluation is required.(32, 33, 34, 35, 36). They are cost-effective and readily  
107 scalable for changing other health behaviours.(37, 38)

108 The Supporting MumS (SMS) intervention, consisting of a library of text messages, was  
109 developed with personal and public involvement (PPI) to support weight management in the  
110 postpartum period.(28) Messages focus on diet and physical activity with embedded  
111 behaviour change techniques (BCTs) informed by behaviour change theory and evidence. In  
112 a previous pilot evaluation, one hundred women with overweight or obesity from Northern  
113 Ireland (NI), who had a baby within the previous 24 months, were recruited and randomised  
114 to receive text messages about weight loss (intervention group) or child health and  
115 development (active control) for 12 months. The study demonstrated the feasibility and  
116 acceptability of the intervention and an independent Trial Steering Committee (TSC) judged  
117 that the pre-specified progression criteria to proceed to a full randomised controlled trial  
118 (RCT) (i.e., successful recruitment, high retention and no differential attrition, high  
119 acceptability of the intervention, and evidence of positive indicative effects) were met.(28)

## 120 Rationale [6a]

121 This RCT addresses the following research question: Is an automated 12 month text  
122 message intervention, designed to support weight loss and weight loss maintenance for  
123 postpartum women with overweight or obesity, effective and cost-effective for weight loss at  
124 12 months, compared with an active control group receiving text messages on child health  
125 and development?

126 SMS is a parallel, 2-arm multi-site RCT using automated and bidirectional text messages to  
127 support weight management over a 12 month period in postpartum women with overweight  
128 or obesity who have had a baby in the last 24 months, comparing weight change at 12  
129 months from baseline between the intervention and active control groups. This RCT protocol  
130 is based on the pilot RCT methodology, but changes were to remove: 1) use of a sealed  
131 pedometer to assess physical activity as this was not acceptable to women and, 2) a  
132 discussion forum intervention component as it was not used by pilot RCT participants. We  
133 added considerations for data collection in the event of COVID-19 restrictions. In moving  
134 from a single site pilot study to a multi-site RCT recruiting an ethnically and  
135 socioeconomically representative sample, we conducted a six-month period of intervention  
136 and recruitment method adaptation, with PPI, ensuring the broad acceptability and cultural  
137 relevance of the messages and enhancing the generalisability of the findings to different  
138 groups of women across the United Kingdom (UK), thus informing implementation.

139 The increased prevalence of obesity, its associated complications and weight management  
140 services, is costly to the National Health Service (NHS). NHS costs associated with caring  
141 for a pregnant woman with a BMI of  $\geq 25$  kg/m<sup>2</sup> are up to 37% higher than caring for a  
142 woman with a healthy BMI.(39) Both National Institute for Health and Care Excellence  
143 (NICE) guidance (13) and an associated review of the cost-effectiveness of weight  
144 management interventions following childbirth,(40) outline the potential of postpartum  
145 interventions to be a cost-effective way of reducing the long-term risks of obesity, heart  
146 disease, cancer and diabetes, and recommend health professionals should advise women  
147 within two years of having a baby to eat a nutritious diet and keep active to encourage  
148 postpartum weight reduction.(13, 41)

149 Postpartum weight management interventions combining dietary and activity behaviour  
150 change have moderate positive influence on maternal weight (12, 15) and those including  
151 self-regulatory BCTs are likely to be more successful.(10, 12) The postpartum period could

152 be an ideal time to intervene to shape new health behaviours as women may be motivated  
153 and receptive to health information.(42) However, women highlight a need for additional  
154 weight management support during the postpartum period as little is currently provided.(43)

155 The present trial allows women to take part up to 24 months postpartum. Qualitative  
156 evidence suggests that every woman's postpartum journey is different (19, 20, 21, 22, 23)  
157 and the optimal time to engage women in postpartum weight management is currently  
158 unknown.(9, 11) Allowing this extended inclusion window accommodates different maternal  
159 weight trajectories across this time.(44, 45) Furthermore, women may prepare for another  
160 pregnancy during this period, so there is potential to support better health for subsequent  
161 pregnancies.(9)

162 Mobile phone usage and ownership are widespread (95% of UK households) amongst all  
163 sectors of society, irrespective of socioeconomic status.(31) Text messaging is a simple  
164 communication mode that does not require smartphone or tablet technology, unlike web-  
165 based interventions or apps. This supports health equity through high reach potential at a  
166 low cost, making it conducive with scale-up and implementation, unlike some weight loss  
167 interventions which can be resource intensive and expensive (46) and can exacerbate health  
168 inequalities.(47, 48) A text messaging intervention can be delivered flexibly and on a  
169 sustained basis, can be reactive and proactive, and does not necessarily rely on participant  
170 initiation.(31, 49) Using the real-time advantages offered by mobile technologies to deliver  
171 behavioural weight management support to postpartum women has the potential to  
172 encourage behaviours that may improve maternal health in both the short and long-term.(50)  
173 Trial results are relevant for other population groups given the possible advantages of this  
174 weight management approach. The NHS aims to embrace the potential of digital strategies  
175 for improving UK health (51) and text message interventions could complement any weight  
176 management support currently delivered across the NHS, to help ease the current burden on  
177 an over-stretched service.

178 The SMS trial adopts a fully automated approach to intervention delivery whilst still offering  
179 feedback to participants. The trial makes a novel and important contribution to the field of  
180 behavioural text message interventions in a number of ways: there are currently few such  
181 interventions that are fully automated, where text messaging is the main mode of delivery  
182 and two-way messaging is used to encourage engagement and delivery of specific BCTs;  
183 there are also few which consider both weight loss and weight loss maintenance, last 12  
184 months or more and use an active control to minimise disappointment bias.(28)

185 The National Institute of Health and Care Research (NIHR) awarded further funding to  
186 explore postnatal mental health outcomes and needs to inform application of the priorities in  
187 the NHS Long Term Plan via existing studies. We added data collection methods related to  
188 mental health (postnatal depression, depression and anxiety, mother and child relationships,  
189 service and treatment experiences) in February 2022, allowing an opportunity to examine  
190 poor postnatal mental health prevalence rates, trajectories, predictors, inequalities and  
191 service needs, in an ethnically and socioeconomically diverse sample from all four UK  
192 countries. The trial also allows further validity and reliability testing of the Me and My Baby  
193 (MaMB)/Me and My Child (MaMC) screening tool which was co-produced by health visitors  
194 and the community to assess the mother and child relationship. Funding for this workstream  
195 was contracted in March 2022.

#### 196 Explanation for the choice of comparators [6b]

197 An active control comparator is used as pilot study findings indicate that this design aspect  
198 supports good participant retention, acceptability and satisfaction, where previous weight  
199 loss trials with postpartum women have reported high levels of attrition and disappointment  
200 bias in those allocated to no treatment or usual care control groups.(1) Active control  
201 participants are assessed for the same outcome measures as the intervention group at 6, 12  
202 and 24 months. We advertise the purpose of the trial as testing two new text message  
203 services to minimise women's preference for one group over another. The participant

204 information sheet (PIS) clearly describes that women have a 50:50 chance of being  
205 assigned to receive messages about child health and development or messages about  
206 weight management, thus preserving participant autonomy.

## 207 Objectives [7]

### 208 Primary objective

209 To conduct a 2-arm parallel-group RCT comparing weight change at 12 months for  
210 postpartum women with overweight or obesity who receive text messages about weight  
211 management with an active control.

### 212 Secondary objectives

- 213 • To assess differences between-groups in secondary outcomes.
- 214 • To assess the cost-effectiveness of the SMS intervention compared with an active  
215 control comparator.
- 216 • To assess the prevalence and trajectories of postnatal mental health in women across  
217 the UK, particularly those from marginalised groups, including assessment of the mother-  
218 child relationship.
- 219 • To conduct a process evaluation to explore women's experiences of the intervention, the  
220 pathways through which the intervention effects are mediated and contextual factors  
221 affecting the outcomes or future implementation of the intervention.
- 222 • To seek permission for routine data linkage for long term health outcomes (mother and  
223 youngest child).
- 224 • To conduct a follow-up of women at 24 months (12 months after the intervention has  
225 ceased) to examine the long-term effect of the intervention and to conduct interviews  
226 with stakeholders to explore scale-up and implementation; this stage is contingent upon  
227 TSC and NIHR assessment of the 12 month primary outcome data and any other core

228 outcome data required to make a fully informed decision about effectiveness and the  
229 clinical significance of weight change.

### 230 Trial Design [8]

231 A pragmatic, multi-site, parallel, 2-arm, assessor-blind, 1:1 superiority RCT comparing  
232 weight change at 12 months for the SMS intervention and active control groups, with mixed  
233 methods process evaluation, cost-effectiveness modelling, consent for future data linkage to  
234 longer-term health outcomes for mothers and babies, 24 month participant follow-up (i.e. 12  
235 months post-intervention) and implementation consultations with stakeholders.

236

### 237 **Methods and analysis**

#### 238 Trial setting [9]

239 A multi-site trial with five recruitment sites in the UK: 1) Belfast, Northern Ireland (trial co-  
240 ordinating site); 2) Stirling, Scotland; 3) Cardiff, Wales; 4) London, England; and 5) Bradford,  
241 England. Recruitment sites were selected to target geographical areas of ethnic and  
242 socioeconomic diversity for the purposes of participant recruitment via community and NHS  
243 pathways.

#### 244 Eligibility criteria [10]

245 Women (in accordance with the NICE Postnatal care guideline NG1941, the term 'woman'  
246 used in this trial includes people who do not identify as women but who are pregnant or have  
247 given birth) are eligible to participate in the trial if they are aged 18 years or over, have a BMI  
248 of  $\geq 25$  kg/m<sup>2</sup>, have had a baby within the last 24 months and own a mobile phone to allow  
249 them to receive personal text messages.

250 Women are excluded if their baby is less than 6 weeks old or if they have insufficient English  
251 language to understand short written messages, if they have had or plan to have any type of  
252 weight loss surgery, if they report having ever received a diagnosis of anorexia nervosa or  
253 bulimia from a doctor, or, if they are on a specialist diet and receiving dietetic care. Women  
254 are excluded if they are participating in any other weight management research  
255 study/programme currently or in the previous three months. Women are not eligible if they  
256 are pregnant and any consented participant becoming pregnant during the trial is excluded,  
257 as the intervention has not been designed for use in pregnancy.

258

## 259 Interventions

### 260 Supporting MumS (SMS) intervention [11a]

261 A full description of the SMS intervention development has been reported elsewhere.(28)  
262 The intervention is described here in accordance with the Template for Intervention  
263 Description and Replication (TIDieR) guidance.(52) The intervention group receive fully  
264 automated text messages, including bidirectional and interactive features, about weight loss  
265 and maintenance of weight loss for 12 months. The evidence and theory-based intervention  
266 consists of a library of text messages focused on diet and physical activity with embedded  
267 BCTs known to be positively associated with weight management. The intervention logic  
268 model and sample intervention and active control text messages are available in  
269 supplemental appendix 1. Examples of how BCTs were incorporated into the messages is  
270 available elsewhere.(28)

### 271 *Why- theory and components*

272 The intervention is based on the Health Action Process Approach (HAPA) and a systematic  
273 review of over 100 behavioural theories which synthesised theoretical explanations for  
274 maintenance of behaviour change.(53) The intervention encourages a self-guided approach

275 to weight-related behaviour change, as supported by the literature.(54, 55, 56, 57) The  
276 intervention focuses on dietary intake and physical activity to address energy balance  
277 related behaviour, with embedded evidence-based BCTs specifically linked to the relevant  
278 phases and psychological processes of behaviour change alongside consideration of  
279 barriers for this population.(28)

280 The messages adopt a friendly tone including humour to foster engagement and provide  
281 information, practical tips and advice including quotes from other mothers. They signpost to  
282 external resources and provide encouragement and motivation, discourage guilt and  
283 promote self-reflection. A core library of text messages (n= 353) to be delivered by the  
284 automated system was created. These include a weekly text message asking women to self-  
285 weigh and report their weight (n=50) and bidirectional messages to encourage engagement,  
286 self-monitoring, relapse prevention and to provide feedback, as follows: 1) “Yes/No”  
287 questions (n=36) which trigger an automated response to the participant based on their  
288 reply, 2) trigger words (‘slip-up’; ‘crave’; ‘bad day’ or ‘tired’) which can be texted by women at  
289 any time to prompt a reply designed to address these barriers and prevent relapses, 3)  
290 During months 7-12 when the focus shifts to maintenance strategies, the weekly text  
291 message asking women to report their weight asks them to add the word ‘up’ or ‘down’ or  
292 ‘same’ in relation to how their weight compares with the week prior. These keywords trigger  
293 an automated response. Responses for bidirectional messages are sent from pre-loaded  
294 message banks and are not individually scripted or tailored.

295

296 Women can also opt-in to receive messages related to weight management when  
297 breastfeeding (n=10) or stopping smoking (n=15). These messages are intended to alleviate  
298 participant concerns in relation to weight management whilst breastfeeding and to address  
299 vulnerabilities around weight gain during smoking cessation.

300



301 *What- materials and procedures*

302 The intervention consists of 353 core messages delivered to all women allocated to this  
303 group, in addition to messages associated with the interactive and optional components  
304 described above.

305 Social support is facilitated throughout the intervention using a “buddy system” (informed by  
306 a successful smoking cessation text message intervention (38)) where a participant can  
307 nominate a friend or family member to receive the same messages they are receiving,  
308 putting that person in a better position to offer support. Participants are sent instructions and  
309 reminders on how to do this within the core messages, along with information on the value  
310 that support can play in weight loss success. A ‘buddy’ can be requested at any stage  
311 throughout the intervention period.

312

313 *Who- intervention provider*

314 Intervention costs are provided by the NI Public Health Agency (PHA). Intervention delivery  
315 is fully automated via the existing pilot study text message platform developed by the  
316 London School of Hygiene and Tropical Medicine (LSHTM). The intervention package is  
317 designed so that it can be readily delivered by other text message providers to facilitate  
318 future implementation by the NHS or public services.

319

320 *How - mode of delivery*

321 Message exchange with participants is managed via a secure server at the LSHTM, using  
322 Firetext (58) to distribute messages to participants.

323

324 *Where– setting*

325 The intervention can occur any place and any time. Participants require a mobile phone with  
326 the function to receive text messages.

327

328 *When and how much*

329 Text message frequency starts at 14-15 sent per week during months one and two, tapering  
330 to 9-10 per week in months three to six. Fewer messages, four to five per week, are sent in  
331 the weight loss maintenance phase (months 7 to 12) when the emphasis shifts to reinforcing  
332 self-regulation techniques developed during the first six months of the intervention and  
333 encouraging maintenance relevant strategies such as relapse prevention.

334 The system delivers messages any time between 10am and 11pm, with messages  
335 programmed to arrive at varied times to avoid predictability. Participants can choose to block  
336 an additional period of the day that they want to be kept message-free e.g., 10am to 5pm.

337 Following randomisation, women allocated to the intervention group are programmed to start  
338 receiving messages on the subsequent Monday which schedules the weekly message  
339 asking participants to report their weight to be sent on Fridays.

340

341 Active control [11a]

342 The active control messages were also developed by the trial team with PPI input (28), for  
343 mothers with babies aged six weeks up to 36 months (based on participant inclusion  
344 criterion). The messages relate to general childcare and development, with content  
345 consistent with evidence-based information provided by the NHS Start4life service (59)  
346 including weekly play ideas/activities and information on milestones, home safety, separation  
347 anxiety and similar topics. Active control messages do not address the intervention target or  
348 active ingredients (i.e. diet, physical activity and BCT content related to weight loss) nor do  
349 they prompt bidirectional functionality. Women receive three messages each week over 12

350 months with messages corresponding to the age of their baby, i.e., if their baby is six months  
351 old at randomisation, the participant starts to receive messages corresponding to this age.  
352 Women allocated to the control group are offered to receive a booklet summarising the  
353 intervention content on completion of the trial.

354

355 Criteria for discontinuing or modifying allocated interventions [11b]

356 Participants in both groups have the ability to pause, stop and restart the messages  
357 throughout by sending an instruction to the text system e.g., 'STOP', 'START'. Researchers  
358 ask women choosing to discontinue the messages to provide any reason for doing so, to  
359 inform the process evaluation. Participants discontinuing messages remain in the trial unless  
360 they formally withdraw from the trial assessments.

361

362 Strategies to improve adherence to interventions [11c]

363 Text message delivery is fully automated and centrally delivered via the LSHTM system  
364 which is intended to ensure treatment fidelity. Regular monitoring of the text message  
365 system is completed by the system developer and trial team members (CI and clerical  
366 officer) to check the content of sent and received messages (e.g., ensure web links are  
367 working, review spontaneous participant responses). Intervention engagement is assessed  
368 via text messages received from participants in response to the weekly weight prompt and  
369 the replies to bidirectional messages as described in [11a], self-report items in  
370 questionnaires at 6, 12 and 24 months and qualitative interviews at 6 and 12 months.

371

372 Relevant concomitant care permitted or prohibited during the trial [11d]

373 Women who become pregnant during the trial will be excluded, as text message content has  
374 not been designed for pregnancy and primary outcome data (weight) can only be collected  
375 from women who are not pregnant. This is a self-directed intervention and women are  
376 permitted to access any other weight-loss services via NHS, voluntary or private sector  
377 pathways. Details of engagement with other services are captured at each data collection  
378 timepoint. Any weight loss surgery undergone by participants during the trial, and prescribed  
379 or over-the-counter medications that may affect weight, are documented at 6, 12 and 24  
380 months to assess the impact on trial outcomes.

381

## 382 Outcomes [12]

383 Trial outcomes, measures and the assessment schedule at 0, 6, 12 and 24 months are  
384 outlined in Table 2.

- 385 ➤ *Primary outcome*: between-group difference in mean weight change (kg) from baseline  
386 to 12 months.
- 387 ➤ *Secondary outcomes*: between-groups difference in mean weight change (kg) from  
388 baseline to 24 months and between-groups differences in mean waist circumference  
389 (cm), mean BMI (kg/m<sup>2</sup>), in the proportions of women gaining a substantial amount of  
390 weight (>5kg), dietary intake (Fat and Fibre Barometer plus questions on sugar intake),  
391 physical activity (IPAQ-SF) and infant feeding practices (Infant Feeding Survey), by the  
392 12 and 24 month follow-up timepoints respectively.
- 393 ➤ *Health economic outcomes*: NHS resource use and personal expenditure (GP usage,  
394 hospitalisations, prescribed and over-the-counter medications, lifestyle products and  
395 services, expenditure on food and drink, alcohol and smoking products); health-related  
396 quality of life (EQ-5D-5L with visual analogue scale) and Capability (ICECAP-A).

- 397 ➤ *Process Evaluation*: to explore participants' experiences and interactions with the  
398 intervention by site, ethnicity and socioeconomic status, including evaluating dose  
399 (number of women who choose to receive all text messages and those who pause or  
400 stop the messages), engagement with the intervention (text message responses and  
401 qualitative data), reach (trial records of recruitment, loss to follow-up and withdrawal) and  
402 acceptability (participants' satisfaction ratings and qualitative data).
- 403 ➤ *Exploratory outcomes*: moderator and mediator analysis (Table 2)
- 404 ➤ *Qualitative sub-study*: telephone interviews with a purposive sample of participants at 6  
405 and 12 months to understand the experiences of women receiving the intervention and  
406 active control text messages and the contextual factors related to engagement including  
407 postnatal mental health, to inform trial and process evaluation outcomes.
- 408 ➤ *Stakeholder consultation*: if the intervention is shown to be effective at 12 months,  
409 stakeholder interviews will be conducted to explore factors relevant to intervention  
410 scalability and implementation, including any further work needed to develop a coherent  
411 implementation model.

412 **Table 2: Supporting MumS trial assessments**

Outcome collected	Measure/equipment used	Time point (month)			
		0	6	12	24
<b><i>Anthropometric measures and Demographics*</i></b>					
Height (m)	Portable standing stadiometer (Seca 213, Birmingham, UK)	?			
Body weight (kg) (primary endpoint)	Calibrated scales (Seca 875, Birmingham, UK)	?	?	?	?
Waist circumference (cm)	Tape measure (Seca 201, Birmingham, UK)	?	?	?	?
Demographic characteristics**	Trial-specific questions	?			
<b><i>Acceptability outcomes</i></b>					
Satisfaction with text messages <sup>‡</sup>	Trial-specific questions		?	?	
Acceptability of intervention, active control and study methods <sup>‡</sup>	Trial-specific questions			?	
Longer-term use of text messages <sup>‡</sup>	Trial-specific questions				?
Qualitative interviews	-		?	?	
Interviews with stakeholders	-				?
<b><i>Economic evaluation - Within trial health and social care cost data<sup>‡</sup></i></b>					
Health service resources use	Questions on health resource usage	?	?	?	?
Medication usage	Questions on over-the-counter medications	?	?	?	?
Healthy lifestyle-related costs	Questions on personal expenditure	?	?	?	?
Exercise-related costs	Questions on costs of exercise	?	?	?	?
Food and drink costs	Questions on weekly cost of groceries, alcohol and smoking products	?	?	?	?
Change of employment status	Trial-specific questions	?	?	?	?
Health-related quality of life	EQ-5D-5L (60)	?	?	?	?
Capability well-being	ICEpop CAPability measure Adults (ICECAP-A)(61)	?	?	?	?
<b><i>Secondary outcome measures<sup>‡</sup></i></b>					
Dietary intake	Fat and fibre barometer(62)	?	?	?	?
Sugar intake	Trial-specific questions	?	?	?	?
Alcohol consumption	Trial-specific questions	?	?	?	?
Physical activity	International Physical Activity Questionnaire (IPAQ) - Short form(63)	?	?	?	?
Infant feeding	Infant feeding survey(64)	?	?	?	?
<b><i>Moderators of intervention effect<sup>‡</sup></i></b>					
Mental health – depression	Edinburgh Postnatal Depression Scale (EPDS)(65)	?	?	?	?
Mental health - anxiety	Generalised Anxiety Disorder (GAD-7)(66)	?	?	?	?
Mother and child relationship	MaMB/MaMC(67) and Mothers Object Relations Scale (MORS-Baby/Child)(68)	?	?	?	?
Sleep	Pittsburgh Sleep Quality Index(69)	?	?	?	?
Confidence/importance/desire for weight loss and maintenance	Trial-specific questions	?	?	?	?
<b><i>Mediators of intervention effect<sup>‡</sup></i></b>					
Intention and self-efficacy for diet and physical activity	Health Action Process Approach (HAPA) including action and coping planning and self-efficacy (70, 71)	?	?	?	?

Habit behaviour	Self-report behavioural automaticity index(72)	?	?	?	?
Self-regulation of eating behaviour	Self-regulation of eating behaviour questionnaire(73)	?	?	?	?
Weight self-monitoring	Trial-specific questions	?	?	?	?
Diet and exercise monitoring	Trial-specific questions	?	?	?	?
Goal-setting for diet and exercise	Trial-specific questions	?	?	?	?
Weight loss motivation	Motivation for weight loss scale(74)	?	?	?	?
Taking part in other weight loss programme	Trial-specific questions	?	?	?	?
Social support	Social support for eating & exercise(75) plus general social support (BiB trial-specific questions)	?	?	?	?
Self-esteem	Rosenberg Self-Esteem Scale(76)	?	?	?	?
<p><sup>†</sup>Recorded in case report form (CRF).</p> <p><sup>**</sup>Date of birth, where they heard about the trial, NHS number, ethnicity, income, employment, education, relationship status, weeks postpartum at trial entry, parity, medical information (disability status, medication use), infant feeding, weight history, smoking status, alcohol intake, technology usage</p> <p><sup>‡</sup>Recorded in participant self-reported questionnaires.</p>					

413

414 Participant timeline [13]

415 The trial flowchart includes the participant timeline for the RCT (Figure 1).

416

417 Sample size [14]

418 The target sample size is 888 women over 12 months, with site-specific targets across the  
 419 five geographical areas (London and Bradford, n=189, respectively; Belfast, Stirling and  
 420 Cardiff, n=170, respectively). Pregnancy-related withdrawals are not replaced unless the  
 421 loss to follow-up (12%) or pregnancy rates (15%) observed in the pilot RCT (28) are  
 422 exceeded by the 6 month timepoint, which is monitored during Project Management Team  
 423 (PMT) meetings.

424

425 Sample size calculation

426 The pilot trial showed a mean weight loss of 1.75kg in the intervention group compared with  
427 a mean gain of 0.19kg in the active control group between baseline and 12 months, equating  
428 to a between-groups difference in mean weight change, adjusted for baseline, of -1.67 kg  
429 (95% CI -4.88 to 1.55)).(28) Based on pilot data for the active control group and a standard  
430 deviation of 7.5kg, 594 completing participants (297 per group) are required to give the trial  
431 over 90% power to detect a statistically significant difference of 2kg in mean weight change  
432 from baseline, at the 5% level, between-groups. A mean difference of 2kg is accepted as  
433 being associated with metabolic health benefits and is often used to power weight loss  
434 studies.(57)

435 We observed a 15% pregnancy dropout rate in the pilot study, based on a 99% white  
436 ethnicity population.(28) Data from South Asian women in the Born in Bradford's Better Start  
437 (BiBBS) cohort (77) indicates that pregnancy dropout rates could be higher in more  
438 ethnically diverse samples, around 22%. To have 119 participants completing per site, and  
439 accounting for a loss to follow-up rate of 15% and higher anticipated pregnancy exclusion  
440 rates in areas with greater ethnic diversity, the following site-specific sample sizes were  
441 calculated: 1) Belfast, Stirling and Cardiff; 15% pregnancy rate + 15% loss to follow-up = 170  
442 women, 2) Bradford and London; 22% pregnancy rate + 15% loss to follow-up= 189 women.  
443 Therefore, the total sample size for the trial is 888 women (444 per group).

444

#### 445 Recruitment [15]

446 Based on successful pilot study recruitment processes,(28) trial information is disseminated  
447 via community settings likely to be attended by mothers of young children (e.g., parent and  
448 toddler groups, libraries, breastfeeding support groups), social media and through contacts  
449 with healthcare professionals and GP practices, including both routine appointments and  
450 contacting potentially eligible women identified using patient database searches. A range of



451 recruitment pathways are used to target ethnically and socioeconomically diverse  
452 populations.

453 In Bradford, principal trial recruitment is through BiBBS, an existing birth cohort study, with  
454 trial information disseminated to participants who previously consented to be informed of  
455 other relevant research studies.

456

#### 457 Monitoring recruitment progress

458 Based on the pilot study recruitment rate,(28) we plan to recruit the target sample over a 12  
459 month period. We employ a recommended traffic light system (Figure 1) to review trial  
460 progression at the mid-point of the recruitment period,(78) with the following actions:  
461 proceed if >50% of target achieved; modify recruitment approach if 25-49% achieved and  
462 consider stopping (discuss with funder and TSC) if <25% of target recruited.

463

#### 464 Screening [10]

465 All trial information materials disseminated via described recruitment pathways, direct  
466 women who are potentially interested in taking part to contact the research team via  
467 telephone, email or by accessing the trial website/scanning a QR code to submit a secure  
468 pro-forma with their contact details.

469 Site researchers contact women expressing an interest in their area to provide a PIS, privacy  
470 notice and copy of the consent form (supplemental appendix 2) via email or post. Audio  
471 versions of the PIS and privacy notice are available on the trial website to increase  
472 accessibility. To comply with the Welsh Language Act 1993, Welsh language versions of the  
473 PIS and Consent Forms are available, on request. Women are given at least 48 hours to  
474 consider the information before being contacted again by telephone by the research team to  
475 discuss the trial procedures and any queries then invited to take part. Up to three contact

476 attempts are made to invite all women expressing interest for screening. BMI eligibility is  
477 initially determined using women's self-reported height and weight but later measured and  
478 verified by the researcher prior to collecting informed consent. Women who are deemed  
479 ineligible due to their baby being less than six weeks old will be invited for rescreening when  
480 they reach six weeks postpartum.

481

#### 482 Informed consent and withdrawal [26a]

483 For women meeting the eligibility criteria and willing to proceed with trial participation, a  
484 baseline researcher visit is arranged. Home visits are the primary approach to data  
485 collection, with women also offered the option of attending another venue if preferred  
486 (University building, community venue or their workplace).

487 Research staff, trained in Good Clinical Practice (GCP) guidelines, obtain written informed  
488 consent prior to collecting baseline data. At the baseline visit, women are offered the  
489 opportunity to ask further questions and confidentiality of data is explained. Informed  
490 consent is then taken. Women are reminded that they have the freedom to choose whether  
491 to take part or not. If willing to proceed, women are asked to initial and sign the trial consent  
492 form, with optional consent to be invited for telephone interview participation at 6 and 12  
493 months. During the 6 and 12 month trial visits, women providing this optional consent at  
494 baseline are asked if they are still happy to be contacted to take part in a telephone  
495 interview. Participants completing telephone interviews are asked to provide their verbal  
496 consent for audio recording and for anonymised quotations to be used in trial publications  
497 before commencing interviews.

498 Once consented, participants are advised that they can withdraw from the trial at any time,  
499 without giving a reason, should they wish. Withdrawals are documented in the CRF along  
500 with any reason given for withdrawing. Participants excluded due to pregnancy are given the

501 option to continue receiving the text messages. Anyone choosing this option needs to  
502 complete and return a pregnancy form to acknowledge that the messages have not been  
503 designed for pregnancy but may be useful after pregnancy. Data collected up to the point of  
504 withdrawal is retained for analysis unless the participant specifies otherwise.

505

506 Additional consent provisions for collection and use of participant data and biological  
507 specimens [26b]

508 Optional aspects of trial consent include permission to be informed of future follow-up to this  
509 trial or other relevant research studies and permission for future data linkage to routinely  
510 collected health records for long term health outcomes (mother and youngest child) which is  
511 not within the current trial timeline. No biological specimens are collected.

512

513 Assignment of interventions: allocation

514 Sequence generation [16a]

515 Participants are randomised in blocks of size 4 and randomisation is stratified by site, with  
516 the allocation sequence generated in STATA (using ralloc) by an independent statistician.

517

518 Concealment mechanism and allocation implementation [16b and 16c]

519 The allocation sequence is sent directly to the platform manager at LSHTM for upload to the  
520 secure web-based text message delivery system. After collecting consent and baseline data,  
521 site researchers enrol participants using the LSHTM randomisation system linked directly to  
522 the text message platform, implementing the random allocation sequence by accordingly

523 sending automated intervention or control messages to the participant. Participants become  
524 aware of their group allocation when they start to receive the text messages; researchers do  
525 not have access to this information.

526

#### 527 Blinding [17a]

528 Researchers responsible for recruitment and collecting outcome data are blinded to group  
529 allocation. It is not possible to blind participants, but they are requested not to discuss the  
530 text messages they are receiving with researchers at each visit. This worked well in the pilot  
531 study with blinding maintained.(28) All statistical analyses are conducted blinded to group  
532 allocation until analyses of the 12 month data point are complete at which point the  
533 randomisation sequence is provided by the independent statistician who prepared it. We  
534 record any circumstances in which unblinding has occurred. The trial clerical officer, Chief  
535 Investigator and LSHTM text message system developer are not blind; these individuals see  
536 what group individuals are assigned to on the text message system for the purposes of  
537 monitoring the intervention delivery and the clerical officer is responsible for preparing the  
538 group-specific 12 month questionnaires. Blinded researchers do not see these  
539 questionnaires until after primary outcome data is collected. Interviews at 6 and 12 months  
540 are carried out by a researcher who has not had any previous contact with the participant.  
541 Group allocation information for that participant is provided to the researcher before the  
542 interview so the correct interview guide can be used.

543

#### 544 Emergency unblinding [17b]

545 Given the nature of the intervention, emergency unblinding is not required.

546

547 Data collection, management and analysis

548 Data collection methods [18a]

549 The details and schedule of trial assessments (Table 2) are based on the pilot RCT.(28)  
550 Assessments take place at baseline (before randomisation), 6 months, 12 months (end of  
551 intervention period) and 24 months (12 months after intervention end).

552 Screening is completed according to the trial eligibility criteria and guided by and  
553 documented in a trial screening sheet.

554 Researchers, trained in data collection processes, collect outcome data during visits to  
555 women's homes (or another venue of the participant's choosing e.g., University/Community  
556 venue). Height, weight and waist circumference are measured by the researcher using  
557 standardised protocols and calibrated scales. A hard board is available to place under the  
558 scales on uneven surfaces. Baseline demographic information is collected by the  
559 researcher. Health service identification number is collected from any woman who provides  
560 consent for future data linkage. All remaining outcome data including health economic  
561 outcomes are collected via participant self-report questionnaires, either on paper (during the  
562 visit or a hard copy left with the participant along with a paid return envelope) or online (link  
563 to questionnaire hosted on Qualtrics survey software sent to participant and managed by the  
564 trial coordinating team in Queen's University Belfast (QUB)), based on participant preference  
565 at each visit. Researchers offer any required assistance with paper questionnaire completion  
566 at the visit or via telephone.

567 Interviews are conducted with approximately 50 women at each timepoint, with participants  
568 purposively sampled to include ethnic, geographical and socio-demographic diversity (i.e.,  
569 including a spread across trial sites, ethnicity, income level, parity, mental health status,  
570 randomised groups and intervention engagement e.g., those who have discontinued

571 messages). Interviews follow a semi-structured interview guide and a translator can be used  
572 when any woman would prefer to be interviewed in a language other than English.

573 Text message engagement data is captured by the LSHTM system, including all messages  
574 sent and received organised by participant ID and date.

575 If the intervention is shown to be effective at 12 months, we will invite a range of relevant  
576 stakeholders (e.g., midwives, GPs, PPI, commissioners, policymakers) identified from  
577 research team and TSC networks to take part in interviews to explore factors relevant to  
578 engagement, scale-up and implementation.

579 Qualitative data is collected from participants and stakeholders using telephone/Microsoft  
580 teams interviews, which are audio-recorded and transcribed.

581

#### 582 Plans to promote participant retention and complete follow-up [18b]

583 Home visits are offered for data collection to facilitate women's participation in research  
584 assessments, although visits can take place elsewhere if preferred by the participant. Visits  
585 are flexibly arranged for a date and time of convenience for the participant. At the end of  
586 each visit, the appointment for the next visit is scheduled if possible. Participants are sent  
587 reminders about scheduled visits at one month, one week and one day before the scheduled  
588 date and time. We attempt to collect data in a 2-week window either side of the follow-up  
589 due date i.e., date  $\pm 2$  weeks, but allow flexibility outside of this window when women are  
590 actively engaging with the research team to arrange the visit. Participants' preferred  
591 methods of contact are documented and prioritised. Three contact attempts using different  
592 methods e.g., text, phone, email, are made to all women to confirm scheduled visits and  
593 following non-attendance to reschedule. Women who are unable to complete a visit with the  
594 researcher at 6 months are sent a link to complete the questionnaire (via Qualtrics email

595 link). As a last resort, when all attempts to arrange a face-to-face visit at 12 (primary  
596 endpoint) and 24 months are unsuccessful, participants are asked to provide self-reported  
597 weight and complete a questionnaire (via Qualtrics email link). Participants are sent a £25  
598 voucher at each trial timepoint (0, 6, 12 and 24 months; £100 maximum over 24 months) as  
599 a token of appreciation for the time committed to completing trial assessments. Participants  
600 lost to follow-up at one trial timepoint but who have not withdrawn, are invited to attend  
601 future visits.

602 To maximise data completeness, site researchers follow-up on any non-returned  
603 questionnaires and check all received data forms/e-forms to document data queries (e.g.,  
604 missing data, invalid ranges etc) and any attempts made to resolve them e.g. clarify  
605 responses with the participant, using a data query log.

606

#### 607 Data Management [19]

608 The hard copy of the CRF which records data at each timepoint including weight is the  
609 source data and requires sign off by the completing researcher. For questionnaires, the hard  
610 copy or electronic record is considered the source data depending on mode of completion.

611 The Northern Ireland Clinical Trials Unit (NICTU) are responsible for developing and  
612 managing trial databases on validated and secure systems that back-up data, maintain audit  
613 trails of data changes and only allow password-protected access to designated trained team  
614 members. Screening and CRF data are entered into trial databases by site researchers and  
615 a 10% random quality control check of data completed by a different researcher. For  
616 CONSORT reporting, screening data includes anonymised summary information for women  
617 who do not proceed to randomisation. Paper questionnaires are scanned at site then the  
618 original posted to NICTU for data entry directly into the trial database.

619 Entered data is processed as per the trial specific Data Management Plan. Data queries are  
620 generated electronically by NICTU and site staff are required to respond to clarify data,  
621 provide missing information or make relevant amendments within the trial databases.

622 Online questionnaire completion is stored by the Qualtrics system on EU based servers  
623 compliant with General Data Protection Regulation (GDPR) and exported by the Trial  
624 Manager for merging with the NICTU questionnaire database by the Trial Statistician (CC).  
625 Following completion of data collection, data is permanently deleted from Qualtrics.

626 Qualitative interview transcripts are anonymised and checked for accuracy against the audio  
627 recordings, then the recordings deleted.

628 A minimal amount of personal information (participant's first name, mobile phone number  
629 and weeks postpartum at baseline) is entered into the randomisation system to allow  
630 delivery of text messages according to group allocation. Only designated trained team  
631 members have password-protected access to the randomisation system.

632 Text message engagement data is downloaded from the LSHTM system at the end of the  
633 intervention period in the form of all messages sent to and replies received from participants.

634 At the trial end, sites and NICTU send original source documentation (hard copy or  
635 electronic) along with consent forms and contact details for individuals who provided consent  
636 to be contacted about follow-up to this trial/future-related research/future data linkage to  
637 routinely collected health records, to QUB for archiving in accordance with the Sponsor's  
638 requirements (10 years after end of trial/publication). The CI will conduct periodic reviews  
639 (every five years) to ensure necessity of data retention. Any other documents containing  
640 personal data are confidentially destroyed. Sites are responsible for archiving general site  
641 files accumulated during the day-to-day operation of the trial.

642



643 Data protection and confidentiality [27]

644 All data is collected, stored and handled in accordance with the QUB Research Management  
645 Policy (2015), GDPR and any future relevant data protection legislation and all trial team  
646 members must be compliant with these regulations. Detailed description of the trial data  
647 processing is documented in a Data Privacy Impact Assessment and in the privacy notice  
648 given to women expressing an interest in the trial.

649 Participants are allocated a unique 5-digit participant identifier at randomisation which is  
650 used on all data collection forms/files to allow identification of data for each participant, with  
651 the key for unlocking pseudonymised data held by site teams in password-protected files.  
652 Hard copies of forms are securely stored in locked filing cabinets in locked offices in  
653 buildings requiring keypad access and which are alarmed outside normal working hours.  
654 Consent and contact details forms, containing identifiable information, are stored separately  
655 to other data (CRFs and questionnaires) and will not be kept for longer than is required. All  
656 electronic forms or data files are held on password-protected systems that are routinely  
657 backed up and are only accessible using username, password and/or multi-factor  
658 authentication. Third-party transcription providers sign a confidentiality agreement detailing  
659 data handling requirements. Any file transfer between QUB and other parties  
660 (sites/transcription provider) is done, subject to relevant data sharing agreements, via secure  
661 and encrypted file transfer systems (e.g., QUB Dropoff). Participants will not be identifiable  
662 from any published trial report.

663 Data collected from women expressing an interest in trial participation but who are not  
664 recruited will be confidentially shredded/deleted.

665

666 Access to data [29/31c]

667 Access to trial records and source data can be granted to authorised Sponsor (or delegate),  
668 REC, host institution and regulatory authority representatives for trial-related monitoring,  
669 audits and inspections, as per participant consent.

670 Only employed trial team members have access to personal/sensitive data of participants  
671 and data is shared with those responsible for the healthcare of the participants only when  
672 health concerns are raised e.g., EPDS score of nine or greater, see [30].

673 The Trial Manager, Statistician and Health Economist will have access to the anonymised  
674 dataset at the trial end, to permit analysis.

675 The CI will manage access rights to the trial data set, in collaboration with the sponsor, and  
676 formal requests for data access need to be made in writing to the CI. The trial will comply  
677 with the good practice principles for sharing individual participant data from publicly funded  
678 trials and data sharing will be undertaken in accordance with the required regulatory  
679 requirements. Any transfer of data to other institutions will be governed by a Data Access  
680 Agreement and will be in the form of an anonymised dataset. In the event of publications  
681 arising from further data analyses, those responsible will need to provide the CI with a copy  
682 of any intended manuscript for approval prior to submission.

683

#### 684 Statistics and analysis

685 Aligned with best practice and following appropriate reporting guidelines, a Statistical  
686 Analysis Plan,(79) Health Economics Analysis Plan (80, 81) and Process Evaluation  
687 Analysis Plan are written and approved by the PMT and TSC prior to analysis. Trial results  
688 will be reported in accordance with the CONSORT guidelines, with the flow of participants  
689 summarised in a CONSORT flow diagram (<http://www.consort-statement.org/>) and tables of

690 summary baseline characteristics presented, by total recruited sample and 12 month  
691 completers.

692

693 Primary outcome analysis [20a]

694 Weight change (kg) at 12 months will be compared on an intention to treat basis (i.e., all  
695 participants as randomised and regardless of whether or not they engaged with the text  
696 messages), between the intervention and active control groups, adjusted for weight at  
697 baseline, site, recruitment method (community vs. NHS) and ethnicity. The adjusted  
698 difference in means between the groups, corresponding 95% confidence intervals (CIs) and  
699 P-value will be reported. A complete-case approach will be used. Sensitivity analysis  
700 assessing the impact on the primary outcome analysis will be conducted to: 1) include  
701 participant self-reported weight, only where researcher-measured weight is not available;  
702 and 2) use last observation carried forward, multiple imputation to impute missing outcome  
703 values and delta methods to explore the impact of worse or better outcomes in the  
704 individuals with missing data.

705 The independent TSC in conjunction with NIHR will decide if the trial should progress to  
706 stage 3 (24 month follow-up and stakeholder engagement) based on assessment of the 12  
707 month primary outcome data and any other core outcome data required to make a fully  
708 informed decision at 12 months (end of intervention). If the trial proceeds, a further analysis  
709 of weight change (kg) will be conducted at 24 months. Despite the sequential nature of this  
710 comparison, we do not intend to change the significance level because this test will be a  
711 secondary analysis.

712 All testing will be done at the two-sided 5% significance level. All analysis will be conducted  
713 using STATA software (Statcorp).

714

715 Secondary outcome analysis [20a]

716 Similar analyses will be conducted for secondary continuous outcomes and for secondary  
717 analyses of outcomes at other time points. Binary outcomes will be analysed using logistic  
718 regression, comparing the intervention and active control groups whilst adjusting for site,  
719 recruitment method and ethnicity. Adjusted odds ratios with 95% CIs and corresponding P-  
720 values will be reported. Secondary analyses will be considered exploratory and hence the P-  
721 values will not be altered to control for multiple testing. The focus of all secondary analyses  
722 will be on estimating the difference between-groups with 95% CIs rather than hypothesis  
723 testing.

724

725 Methods for additional analyses (e.g., subgroup analyses) [20b]

726 To understand any differential effects of the intervention, subgroup analyses will be  
727 conducted stratifying by pre-specified variables including site, SES, ethnicity, recruitment  
728 method, weeks postpartum (at baseline), BMI (at baseline) and parity. Interaction tests will  
729 be conducted, separately, by including interaction terms within regression models. The  
730 significance level for subgroup analyses will not be reduced but will be interpreted  
731 cautiously. As recommended, all subgroup analyses will be reported.(82)

732

733 Statistical methods to handle protocol non-adherence and missing data [20c]

734 The primary analysis of weight change (kg) at 12 months will be on an intention to treat  
735 basis.

736

737 Interim analyses [21b]

738 No interim analyses are planned.

739

740 Economic evaluation

741 The within trial economic evaluation builds on the methods successfully used in the pilot  
742 economic evaluation (28) including the identification, measurement and valuation of  
743 resource use and expenditure and quality of life/capability wellbeing (Table 2). The economic  
744 evaluation is conducted from a UK NHS and personal social services perspective with the  
745 addition of a societal perspective applied to capture broader impacts, consistent with the  
746 UK's NICE guidance for public health economic evaluations.(83) Direct costs to the health  
747 care system include the intervention implementation costs and any follow-up service use  
748 costs. These health and personal perspectives will be assessed to investigate a broader  
749 impact of the intervention, including direct cost to participants and indirect costs. Both costs  
750 and health outcomes will be discounted at the same annual rate of 1.5% for the reference  
751 case, as recommended by the NICE public health methods guidelines.(83) The economic  
752 analysis uses a 'multi-pronged' approach. The total and mean per-participant costs for the  
753 intervention and control groups will be calculated. A sensitivity analysis will incorporate  
754 development costs. Regression analysis, controlling for baseline differences, will be used to  
755 estimate the average cost per-participant and the average quality-adjusted life year (QALY)  
756 achieved, by group. A cost-utility analysis will report cost per QALY gained over the 24  
757 month period using the area under the curve approach.(84) Results will be presented on the  
758 cost-effectiveness plan and 95% CIs for the incremental cost-effectiveness ratio will be  
759 determined.(85) Joint uncertainty in costs and outcomes will be represented using a cost-  
760 effectiveness acceptability curve to present the probability of the SMS intervention being  
761 cost-effective for prevailing UK ceiling thresholds for costs per QALY gained.(86) The cost-

762 effectiveness analysis will align with the primary outcome, by examining differences in  
763 weight and BMI and total costs between treatment groups, the incremental cost per weight  
764 gain averted will be calculated. The mean costs and effects for each trial arm will be  
765 calculated and presented along with the incremental costs and effects between arms  
766 (including 95% CIs).

767 The within trial economic analysis will be carried out for the 24 months follow-up and will  
768 form the primary analysis. However, this short time horizon may be insufficient to capture the  
769 total costs and benefits related to the intervention. If differences in quality of life or capability  
770 wellbeing are identified, the results will be extrapolated to a lifetime horizon using modelling  
771 methods.

772

#### 773 Monitoring and auditing [23]

774 As per contractual agreements and participant consent, direct access to trial records and  
775 source documents will be granted to the Sponsor or regulatory agencies by all research staff  
776 and trial sites, for the purposes of trial related monitoring, audits and inspections. The trial is  
777 monitored and audited in accordance with the Sponsor's policy, which is consistent with the  
778 UK Policy Framework for Health and Social Care Research, and the TSC informed of the  
779 main findings of any monitoring, audit or inspection.

780

#### 781 Trial Steering Committee (TSC) and Data Monitoring [5d/21a]

782 The independent TSC meet face-to-face or online at least annually, as required, to provide  
783 trial oversight on behalf of the sponsor and funder. The TSC determine trial progression at  
784 the recruitment mid-point (see Figure 1 and [15]) and primary outcome stage. As this RCT  
785 involves a low-risk behaviour change lifestyle intervention which is unlikely to raise concerns

786 for participant safety (no evidence of harm was reported in the pilot study or in any other text  
787 message behaviour change studies), the sponsor and funder agreed that a Data Monitoring  
788 Committee would not be convened [21a]. Participant safety is a standing agenda item at  
789 each meeting, see [22].

790

#### 791 Project Management Team (PMT) [5d]

792 The PMT is the key decision-making group consisting of the co-applicants, Trial Manager  
793 and PPI representative. The PMT meet online every 2-4 months to oversee the trial design,  
794 management and conduct, including monitoring participant safety, see [22].

795

#### 796 Trial coordinating centre [5d]

797 The trial is coordinated by the Chief Investigator (MMcK) and the Trial Manager (DG) in  
798 QUB. Weekly meetings between the CI and Trial Manager and regular meetings with site  
799 teams are held, to discuss trial activities across the five trial sites. Site PIs are responsible  
800 for managing staff and overseeing participant recruitment and follow-up at their sites.

801

#### 802 Adverse event reporting and harms [22]

803 Serious adverse events (SAEs) are recorded by researchers from the time of the  
804 participant's consent into the trial until one month after the end of the 12 month intervention  
805 period and reported in line with GCP guidelines and the Sponsor's adverse event reporting  
806 procedures. Site PIs review SAEs within 24 hours to determine severity, relatedness and  
807 expectedness. The CI (or delegate) is informed of any event evaluated as being severe,  
808 related and unexpected, to conduct a second review. Onward reporting of any SAEs

809 categorised as related and expected by both the PI and CI is actioned by the CI or Trial  
810 Manager to the Sponsor and REC within 24 hours and 15 days respectively. All SAEs are  
811 summarised and included in annual reports to the REC and reported during meetings of the  
812 PMT and TSC.

813

#### 814 Ancillary and post-trial care [30]

815 This is deemed a low-risk public health trial and no evidence of harm has been reported in  
816 text message studies for other health behaviours or in our pilot RCT, so no post-trial care is  
817 delivered. All women are given a signposting 'Useful Contacts' leaflet during trial visits  
818 advising them on relevant agencies and organisations that they might contact for support on  
819 a variety of issues e.g., bereavement. We monitor any emerging safety issues or unintended  
820 consequences and any participants experiencing such issues will be referred to their GP for  
821 appropriate treatment. This includes the onward reporting of EPDS scores of nine or above  
822 (Table 2). The EPDS is a screening questionnaire used to detect postnatal depressive  
823 symptoms and the scale guidance indicates that women with scores meeting this threshold  
824 would benefit from further clinical assessment. We calculate scores within one week of  
825 receiving the completed EPDS at each follow-up timepoint and letters are sent to the GP and  
826 the participant to inform of scores  $\geq 9$ , as per PIS and consent processes.

827

#### 828 Personal and Public Involvement (PPI)\* Statement

829 (*\* Note: In NI, PPI means Personal and Public Involvement due to integrated Health and*  
830 *Social Care systems. The rest of the UK use 'Patient and Public Involvement' also known as*  
831 *'Patient and Public Involvement and Engagement'*)



832 PPI was integral to the pilot study with guidance received on the development of the text  
833 message libraries and all trial methods and materials, as previously reported.(28) The design  
834 of the present trial mirrors the methods used in the pilot trial. We recruited PPI  
835 representatives from Scotland, London and Bradford to conduct a period of trial adaptation  
836 (Figure 1) whereby the library of intervention text messages and trial recruitment materials  
837 underwent further PPI to ensure content was acceptable and culturally relevant for women  
838 from a range of backgrounds and ethnicities across the UK.

839 We have PPI representatives on our PMT and independent TSC to contribute to decision  
840 making throughout the trial and we seek their advice on an ad-hoc basis, as matters arise.  
841 PPI representatives will help shape the dissemination plan for trial results and will review  
842 dissemination materials to ensure communication of findings in an appropriate manner.

843 PPI work is led by the trial team and conducted and reimbursed according to NIHR guidance  
844 for involving the public in research.(87)

845

#### 846 Protocol amendments [25]

847 The CI, in consultation with the PMT and Sponsor, is responsible for the decision to amend  
848 the protocol and, in turn, for communicating substantive changes to relevant stakeholders.  
849 Substantial and non-substantial amendments are reviewed by the sponsor to determine the  
850 appropriate amendment category then submitted to the approving REC via the IRAS system  
851 for approval prior to implementation, and subsequently disseminated to participating centres  
852 (R&D offices, regulatory agencies). Version control and details of amendment history are  
853 clearly documented in the protocol and are disseminated to the trial sites, PMT and TSC  
854 members, funder and trial registries.

855 The current protocol is 3.0 (10/05/2023). Amendments to the protocol incorporated: 1) the  
856 added mental health objectives resulting from the additional NIHR funding; 2) an increase in  
857 trial sample size (from 850 to 888 women) to allow for higher estimated pregnancy exclusion  
858 rates in more ethnically diverse populations than were originally accounted for; 3) to include  
859 processes to collect participant self-reported weight at 12 and 24 months only as a last  
860 resort in cases where it is not possible to obtain researcher-measured weight; and 4) to offer  
861 a booklet summarising the intervention content to the active control group after completion of  
862 data collection at 24 months.

863

#### 864 Protocol training and deviations

865 All trial staff undergo training on the protocol, trial processes and standard operating  
866 procedures (SOPs) for which they are responsible (detailed on the site delegation log). The  
867 Trial Manager monitors trial activities across sites to ensure adherence and consistency to  
868 the protocol. There are no planned protocol deviations. If a deviation occurs, it is  
869 documented and reported immediately to the CI and Sponsor, including corrective and  
870 preventative actions. Frequent recurrence of protocol deviations is unacceptable, requires  
871 immediate action and could be classified as a serious breach i.e., one which is likely to  
872 significantly affect the safety or physical or mental integrity of trial participants and/or the  
873 scientific value of the trial. Any breach meeting this definition is immediately reported to the  
874 Sponsor, as per the Sponsor's SOP on 'Matters of non-compliance with study protocol'.

875

#### 876 Peer review

877 This trial has undergone independent, expert peer-review as part of the NIHR PHR funding  
878 process. It has also been reviewed and approved by the QUB Research Governance, Ethics  
879 and Integrity Manager, on behalf of the Sponsor.

880

881 **Ethics and dissemination**

882 Ethical and Regulatory considerations [24]

883 The trial is conducted in accordance with the recommendations for physicians involved in  
884 research on human participants adopted by the 18<sup>th</sup> World Medical Assembly, Helsinki 1964,  
885 and later revisions, the UK Policy Framework for Health and Social Care, relevant UK data  
886 protection legislation and the principles of GCP. QUB acts as sponsor for the trial and has in  
887 place comprehensive SOPs for the approval and monitoring of research. This protocol and  
888 other relevant trial documents were reviewed and approved by the West of Scotland  
889 Research Ethics Service REC 4 22/WS/0003. Correspondence with the REC is retained in  
890 the Trial Master File. An annual progress report is submitted to REC until the trial end. The  
891 CI will report to REC when the trial ends (or is terminated prematurely) and a final report with  
892 trial results submitted within one year of this.

893 Appropriate approvals from participating organisations e.g., NHS R&D approvals are  
894 obtained before recruiting via applicable routes.

895

896 Dissemination [31a]

897 Dissemination plans informed by PPI and participant and stakeholder engagement will be  
898 developed and reviewed annually. A range of outputs including NIHR final report, peer-  
899 reviewed open access publications, conference presentations, policy briefings, non-  
900 academic research summaries and a draft scaling-up plan, are anticipated to be  
901 disseminated relevant for different audiences, including trial participants, postpartum women  
902 throughout the UK, healthcare professionals, service commissioners, academics, the  
903 Government and public health bodies.

904

## 905 References

- 906 1. Dodd JM, Deussen AR, O'Brien CM, Schoenaker D, Poprzeczny A, Gordon A, et al. Targeting  
907 the postpartum period to promote weight loss: a systematic review and meta-analysis. *Nutr Rev*.  
908 2018;76(8):639-54.
- 909 2. Chan A-W, Tetzlaff JM, Altman DG, Laupacis A, Gøtzsche PC, Krleža-Jerić K, et al. SPIRIT 2013  
910 Statement: Defining standard protocol items for clinical trials. *Ann Intern Med*. 2013;158:200-7.
- 911 3. Scott-Pillai R, Spence D, Cardwell CR, Hunter A, Holmes VA. The impact of body mass index  
912 on maternal and neonatal outcomes: a retrospective study in a UK obstetric population, 2004-2011.  
913 *Bjog*. 2013;120(8):932-9.
- 914 4. Marchi J, Berg M, Dencker A, Olander EK, Begley C. Risks associated with obesity in  
915 pregnancy, for the mother and baby: a systematic review of reviews. *Obes Rev*. 2015;16(8):621-38.
- 916 5. Bhattacharya S, Campbell DM, Liston WA, Bhattacharya S. Effect of Body Mass Index on  
917 pregnancy outcomes in nulliparous women delivering singleton babies. *BMC Public Health*.  
918 2007;7:168.
- 919 6. Aune D, Saugstad OD, Henriksen T, Tonstad S. Maternal body mass index and the risk of fetal  
920 death, stillbirth, and infant death: a systematic review and meta-analysis. *Jama*. 2014;311(15):1536-  
921 46.
- 922 7. Crozier SR, Inskip HM, Godfrey KM, Cooper C, Harvey NC, Cole ZA, et al. Weight gain in  
923 pregnancy and childhood body composition: findings from the Southampton Women's Survey123.  
924 *The American Journal of Clinical Nutrition*. 2010;91(6):1745-51.
- 925 8. Crosby DA, Collins M, O'Higgins A, Mullaney L, Farah N, Turner MJ. Interpregnancy changes  
926 in maternal weight and body mass index. *Am J Perinatol*. 2015;30(2):199-204.
- 927 9. McKinley MC, Allen-Walker V, McGirr C, Rooney C, Woodside JV. Weight loss after  
928 pregnancy: challenges and opportunities. *Nutr Res Rev*. 2018;31(2):225-38.
- 929 10. Lim S, O'Reilly S, Behrens H, Skinner T, Ellis I, Dunbar JA. Effective strategies for weight loss in  
930 post-partum women: a systematic review and meta-analysis. *Obes Rev*. 2015;16(11):972-87.
- 931 11. Nascimento SL, Pudwell J, Surita FG, Adamo KB, Smith GN. The effect of physical exercise  
932 strategies on weight loss in postpartum women: a systematic review and meta-analysis. *Int J Obes*  
933 (Lond). 2014;38(5):626-35.
- 934 12. van der Pligt P, Willcox J, Hesketh KD, Ball K, Wilkinson S, Crawford D, et al. Systematic  
935 review of lifestyle interventions to limit postpartum weight retention: implications for future  
936 opportunities to prevent maternal overweight and obesity following childbirth. *Obes Rev*.  
937 2013;14(10):792-805.
- 938 13. National Institute for Health and Care Excellence (NICE). Weight Management Before, During  
939 and After Pregnancy: NICE Public Health Guidance 27. 2010 [Available from:  
940 <https://www.nice.org.uk/guidance/ph27>.
- 941 14. Amorim Adegboye AR, Linne YM. Diet or exercise, or both, for weight reduction in women  
942 after childbirth. *Cochrane Database Syst Rev*. 2013;2013(7):Cd005627.
- 943 15. Farpour-Lambert NJ, Eells LJ, Martinez de Tejada B, Scott C. Obesity and Weight Gain in  
944 Pregnancy and Postpartum: an Evidence Review of Lifestyle Interventions to Inform Maternal and  
945 Child Health Policies. *Front Endocrinol (Lausanne)*. 2018;9:546.
- 946 16. Joshi PP, Quintiliani LM, McCarthy AC, Gilmore A, Mahesri M, Sullivan LM, et al. A  
947 Randomized Controlled Feasibility Trial in Behavioral Weight Management for Underserved  
948 Postpartum African American Women: The RENEW Study. *Prev Chronic Dis*. 2018;15:E77.
- 949 17. Wright C, Mogul M, Acevedo G, Aysola J, Momplaisir F, Schwartz S, et al. Preparing for a trial  
950 to test a postpartum weight retention intervention among low income women: feasibility of a  
951 protocol in a community-based organization. *BMC Womens Health*. 2018;18(1):27.
- 952 18. Haste A, Adamson AJ, McColl E, Araujo-Soares V, Bell R. Problems recruiting and retaining  
953 postnatal women to a pilot randomised controlled trial of a web-delivered weight loss intervention.  
954 *BMC Res Notes*. 2018;11(1):203.

- 955 19. Montgomery KS, Bushee TD, Phillips JD, Kirkpatrick T, Catledge C, Braveboy K, et al.  
956 Women's challenges with postpartum weight loss. *Matern Child Health J.* 2011;15(8):1176-84.
- 957 20. Neiterman E, Fox B. Controlling the unruly maternal body: Losing and gaining control over  
958 the body during pregnancy and the postpartum period. *Soc Sci Med.* 2017;174:142-8.
- 959 21. Christenson A, Johansson E, Reynisdottir S, Torgerson J, Hemmingsson E. Women's  
960 Perceived Reasons for Their Excessive Postpartum Weight Retention: A Qualitative Interview Study.  
961 *PLoS One.* 2016;11(12):e0167731.
- 962 22. Saligheh M, McNamara B, Rooney R. Perceived barriers and enablers of physical activity in  
963 postpartum women: a qualitative approach. *BMC Pregnancy and Childbirth.* 2016;16(1):131.
- 964 23. Devine CM, Bove CF, Olson CM. Continuity and change in women's weight orientations and  
965 lifestyle practices through pregnancy and the postpartum period: the influence of life course  
966 trajectories and transitional events. *Soc Sci Med.* 2000;50(4):567-82.
- 967 24. O'Toole ML, Sawicki MA, Artal R. Structured diet and physical activity prevent postpartum  
968 weight retention. *J Womens Health (Larchmt).* 2003;12(10):991-8.
- 969 25. Macleod M, Craigie AM, Barton KL, Treweek S, Anderson AS. Recruiting and retaining  
970 postpartum women from areas of social disadvantage in a weight-loss trial--an assessment of  
971 strategies employed in the WeighWell feasibility study. *Matern Child Nutr.* 2013;9(3):322-31.
- 972 26. Taylor C, Bhavnani V, Zasada M, Ussher M, Bick D. Barriers and facilitators to uptake and  
973 retention of inner-city ethnically diverse women in a postnatal weight management intervention: a  
974 mixed-methods process evaluation within a feasibility trial in England. *BMJ Open.*  
975 2020;10(7):e034747.
- 976 27. Østbye T, Krause KM, Lovelady CA, Morey MC, Bastian LA, Peterson BL, et al. Active Mothers  
977 Postpartum: a randomized controlled weight-loss intervention trial. *Am J Prev Med.* 2009;37(3):173-  
978 80.
- 979 28. McGirr C, Rooney C, Gallagher D, Dombrowski SU, Anderson AS, Cardwell CR, et al. Text  
980 messaging to help women with overweight or obesity lose weight after childbirth: the intervention  
981 adaptation and SMS feasibility RCT. *NIHR Journals Library: Public Health Research.* 2020;8(4).
- 982 29. Herring SJ, Cruice JF, Bennett GG, Darden N, Wallen JJ, Rose MZ, et al. Intervening during  
983 and after pregnancy to prevent weight retention among African American women. *Prev Med Rep.*  
984 2017;7:119-23.
- 985 30. Waring ME, Moore Simas TA, Oleski J, Xiao RS, Mulcahy JA, May CN, et al. Feasibility and  
986 Acceptability of Delivering a Postpartum Weight Loss Intervention via Facebook: A Pilot Study. *J Nutr*  
987 *Educ Behav.* 2018;50(1):70-4.e1.
- 988 31. Willcox JC, Dobson R, Whittaker R. Old-Fashioned Technology in the Era of "Bling": Is There a  
989 Future for Text Messaging in Health Care? *J Med Internet Res.* 2019;21(12):e16630.
- 990 32. Job JR, Fjeldsoe BS, Eakin EG, Reeves MM. Effectiveness of extended contact interventions  
991 for weight management delivered via text messaging: a systematic review and meta-analysis.  
992 *Obesity Reviews.* 2018;19(4):538-49.
- 993 33. Samuel Holmes W, Anne Moorhead S, Coates VE, Bond RR, Zheng H. Impact of digital  
994 technologies for communicating messages on weight loss maintenance: a systematic literature  
995 review. *European Journal of Public Health.* 2018;29(2):320-8.
- 996 34. Schippers M, Adam PC, Smolenski DJ, Wong HT, de Wit JB. A meta-analysis of overall effects  
997 of weight loss interventions delivered via mobile phones and effect size differences according to  
998 delivery mode, personal contact, and intervention intensity and duration. *Obes Rev.* 2017;18(4):450-  
999 9.
- 1000 35. Siopis G, Chey T, Allman-Farinelli M. A systematic review and meta-analysis of interventions  
1001 for weight management using text messaging. *J Hum Nutr Diet.* 2015;28 Suppl 2:1-15.
- 1002 36. Skinner R, Gonet V, Currie S, Hoddinott P, Dombrowski SU. A systematic review with meta-  
1003 analyses of text message-delivered behaviour change interventions for weight loss and weight loss  
1004 maintenance. *Obes Rev.* 2020;21(6):e12999.

- 1005 37. Guerriero C, Cairns J, Roberts I, Rodgers A, Whittaker R, Free C. The cost-effectiveness of  
1006 smoking cessation support delivered by mobile phone text messaging: Txt2stop. *Eur J Health Econ.*  
1007 2013;14(5):789-97.
- 1008 38. Free C, Knight R, Robertson S, Whittaker R, Edwards P, Zhou W, et al. Smoking cessation  
1009 support delivered via mobile phone text messaging (txt2stop): a single-blind, randomised trial. *The*  
1010 *Lancet.* 2011;378(9785):49-55.
- 1011 39. Morgan KL, Rahman MA, Macey S, Atkinson MD, Hill RA, Khanom A, et al. Obesity in  
1012 pregnancy: a retrospective prevalence-based study on health service utilisation and costs on the  
1013 NHS. *BMJ Open.* 2014;4(2):e003983.
- 1014 40. Rawdin AC, Duenas A, Chilcott JB. The cost-effectiveness of weight management  
1015 programmes in a postnatal population. *Public Health.* 2014;128(9):804-10.
- 1016 41. Denison FC, Aedla NR, Keag O, Hor K, Reynolds RM, Milne A, et al. Care of women with  
1017 obesity in pregnancy: Green-top guideline no.72. *BJOG.* 2018.
- 1018 42. Phelan S. Pregnancy: a "teachable moment" for weight control and obesity prevention. *Am J*  
1019 *Obstet Gynecol.* 2010;202(2):135.e1-8.
- 1020 43. Dinsdale S, Branch K, Cook L, Shucksmith J. "As soon as you've had the baby that's it..." a  
1021 qualitative study of 24 postnatal women on their experience of maternal obesity care pathways.  
1022 *BMC Public Health.* 2016;16(1):625.
- 1023 44. Lipsky LM, Strawderman MS, Olson CM. Maternal weight change between 1 and 2 years  
1024 postpartum: the importance of 1 year weight retention. *Obesity (Silver Spring).* 2012;20(7):1496-  
1025 502.
- 1026 45. Østbye T, Peterson BL, Krause KM, Swamy GK, Lovelady CA. Predictors of postpartum weight  
1027 change among overweight and obese women: results from the Active Mothers Postpartum study. *J*  
1028 *Womens Health (Larchmt).* 2012;21(2):215-22.
- 1029 46. Cobiac L, Vos T, Veerman L. Cost-effectiveness of Weight Watchers and the Lighten Up to a  
1030 Healthy Lifestyle program. *Aust N Z J Public Health.* 2010;34(3):240-7.
- 1031 47. Hoddinott P, Allan K, Avenell A, Britten J. Group interventions to improve health outcomes: a  
1032 framework for their design and delivery. *BMC Public Health.* 2010;10(1):800.
- 1033 48. White M, Adams J, Heywood P. How and why do interventions that increase health overall  
1034 widen inequalities within populations? In: Babones SJ, editor. *Social inequality and public health:*  
1035 *Policy Press;* 2009. p. 0.
- 1036 49. Shaw R, Bosworth H. Short message service (SMS) text messaging as an intervention  
1037 medium for weight loss: A literature review. *Health Informatics J.* 2012;18(4):235-50.
- 1038 50. Sherifali D, Nerenberg KA, Wilson S, Semeniuk K, Ali MU, Redman LM, et al. The  
1039 Effectiveness of eHealth Technologies on Weight Management in Pregnant and Postpartum Women:  
1040 Systematic Review and Meta-Analysis. *J Med Internet Res.* 2017;19(10):e337.
- 1041 51. Scottish Government. *Scotland's Digital Future. A Strategy for Scotland.* Edinburgh: Scottish  
1042 Government; 2011.
- 1043 52. Hoffmann TC, Glasziou PP, Boutron I, Milne R, Perera R, Moher D, et al. Better reporting of  
1044 interventions: template for intervention description and replication (TIDieR) checklist and guide. *BMJ*  
1045 *: British Medical Journal.* 2014;348:g1687.
- 1046 53. Kwasnicka D, Dombrowski SU, White M, Snihotta F. Theoretical explanations for  
1047 maintenance of behaviour change: a systematic review of behaviour theories. *Health Psychology*  
1048 *Review.* 2016;10(3):277-96.
- 1049 54. Catenacci VA, Odgen L, Phelan S, Thomas JG, Hill J, Wing RR, et al. Dietary habits and weight  
1050 maintenance success in high versus low exercisers in the National Weight Control Registry. *J Phys Act*  
1051 *Health.* 2014;11(8):1540-8.
- 1052 55. Marinilli Pinto A, Gorin AA, Raynor HA, Tate DF, Fava JL, Wing RR. Successful weight-loss  
1053 maintenance in relation to method of weight loss. *Obesity (Silver Spring).* 2008;16(11):2456-61.
- 1054 56. Tang J, Abraham C, Greaves C, Yates T. Self-directed interventions to promote weight loss: a  
1055 systematic review of reviews. *J Med Internet Res.* 2014;16(2):e58.

- 1056 57. Phelan S, Hagobian T, Brannen A, Hatley KE, Schaffner A, Muñoz-Christian K, et al. Effect of  
1057 an Internet-Based Program on Weight Loss for Low-Income Postpartum Women: A Randomized  
1058 Clinical Trial. *Jama*. 2017;317(23):2381-91.
- 1059 58. Firetext. Firetext SMS provider 2023 [Available from: <https://www.firetext.co.uk/>].
- 1060 59. National Health Service. Better Health: Start for Life 2023 [Available from:  
1061 <https://www.nhs.uk/start-for-life/>].
- 1062 60. Brooks R. EuroQol: the current state of play. *Health Policy*. 1996;37(1):53-72.
- 1063 61. Al-Janabi H, Flynn TN, Coast J. Development of a self-report measure of capability wellbeing  
1064 for adults: the ICECAP-A. *Qual Life Res*. 2012;21(1):167-76.
- 1065 62. Wright JL, Scott JA. The Fat and Fibre Barometer, a short food behaviour questionnaire:  
1066 reliability, relative validity and utility. *Aus J Nutr Dietet*. 2000;57:33-9.
- 1067 63. Booth M. Assessment of physical activity: an international perspective. *Res Q Exerc Sport*.  
1068 2000;71 Suppl 2:114-20.
- 1069 64. McAndrew F, Thompson J, Fellows L, Large A, Speed M, Renfrew MJ. Infant Feeding Survey  
1070 2010.: Health and Social Care Information Centre; 2012.
- 1071 65. Cox JL, Holden JM, Sagovsky R. Detection of postnatal depression. Development of the 10-  
1072 item Edinburgh Postnatal Depression Scale. *Br J Psychiatry*. 1987;150:782-6.
- 1073 66. Spitzer RL, Kroenke K, Williams JB, Löwe B. A brief measure for assessing generalized anxiety  
1074 disorder: the GAD-7. *Arch Intern Med*. 2006;166(10):1092-7.
- 1075 67. Born in Bradford. Me and my Baby Measure 2023 [Available from:  
1076 <https://borninbradford.nhs.uk/gallery/me-and-my-baby-measure/>].
- 1077 68. Oates J, Gervai J. Mothers' Perceptions of Their Infants. *Journal of Prenatal and Perinatal  
1078 Psychology and Health*. 2019;33(4):282-300.
- 1079 69. Buysse DJ, Reynolds CF, 3rd, Monk TH, Berman SR, Kupfer DJ. The Pittsburgh Sleep Quality  
1080 Index: a new instrument for psychiatric practice and research. *Psychiatry Res*. 1989;28(2):193-213.
- 1081 70. Sniehotta FF, Schwarzer R, Scholz U, Schüz B. Action planning and coping planning for long-  
1082 term lifestyle change: theory and assessment. *European Journal of Social Psychology*.  
1083 2005;35(4):565-76.
- 1084 71. Schwarzer R, Renner B. Social-cognitive predictors of health behavior: action self-efficacy  
1085 and coping self-efficacy. *Health Psychol*. 2000;19(5):487-95.
- 1086 72. Gardner B, Abraham C, Lally P, de Bruijn G-J. Towards parsimony in habit measurement:  
1087 Testing the convergent and predictive validity of an automaticity subscale of the Self-Report Habit  
1088 Index. *International Journal of Behavioral Nutrition and Physical Activity*. 2012;9(1):102.
- 1089 73. Kliemann N, Beeken RJ, Wardle J, Johnson F. Development and validation of the Self-  
1090 Regulation of Eating Behaviour Questionnaire for adults. *International Journal of Behavioral  
1091 Nutrition and Physical Activity*. 2016;13(1):87.
- 1092 74. Meyer AH, Weissen-Schelling S, Munsch S, Margraf J. Initial development and reliability of a  
1093 motivation for weight loss scale. *Obes Facts*. 2010;3(3):205-11.
- 1094 75. Sallis JF, Grossman RM, Pinski RB, Patterson TL, Nader PR. The development of scales to  
1095 measure social support for diet and exercise behaviors. *Prev Med*. 1987;16(6):825-36.
- 1096 76. Rosenberg M. *Conceiving the self*. New York: Basic Books; 1979.
- 1097 77. Born in Bradford. Born in Bradford's Better Start. 2023 [Available from:  
1098 <https://borninbradford.nhs.uk/what-we-do/cohort-studies/better-start/>].
- 1099 78. Avery KNL, Williamson PR, Gamble C, O'Connell Francischetto E, Metcalfe C, Davidson P, et  
1100 al. Informing efficient randomised controlled trials: exploration of challenges in developing  
1101 progression criteria for internal pilot studies. *BMJ Open*. 2017;7(2):e013537.
- 1102 79. Gamble C, Krishan A, Stocken D, Lewis S, Juszcak E, Doré C, et al. Guidelines for the Content  
1103 of Statistical Analysis Plans in Clinical Trials. *JAMA*. 2017;318(23):2337-43.
- 1104 80. Thorn JC, Davies CF, Brookes ST, Noble SM, Dritsaki M, Gray E, et al. Content of Health  
1105 Economics Analysis Plans (HEAPs) for Trial-Based Economic Evaluations: Expert Delphi Consensus  
1106 Survey. *Value Health*. 2021;24(4):539-47.

- 1107 81. Husereau D, Drummond M, Augustovski F, de Bekker-Grob E, Briggs AH, Carswell C, et al.  
1108 Consolidated Health Economic Evaluation Reporting Standards (CHEERS) 2022 Explanation and  
1109 Elaboration: A Report of the ISPOR CHEERS II Good Practices Task Force. *Value in Health*.  
1110 2022;25(1):10-31.
- 1111 82. van Hoorn R, Tummers M, Booth A, Gerhardus A, Rehfues E, Hind D, et al. The development  
1112 of CHAMP: a checklist for the appraisal of moderators and predictors. *BMC Medical Research*  
1113 *Methodology*. 2017;17(1):173.
- 1114 83. National Institute for Health and Care Excellence (NICE). *Methods for the development of*  
1115 *NICE public health guidance (third edition): process and methods.*; 2012.
- 1116 84. Manca A, Hawkins N, Sculpher MJ. Estimating mean QALYs in trial-based cost-effectiveness  
1117 analysis: the importance of controlling for baseline utility. *Health Econ*. 2005;14(5):487-96.
- 1118 85. Drummond MF, Sculpher MJ, Claxton K, Stoddart GL, Torrance GW. *Methods for the*  
1119 *Economic Evaluation of Health Care Programmes (fourth edition)*. Oxford: Oxford University Press;  
1120 2015.
- 1121 86. Fenwick E, Marshall DA, Levy AR, Nichol G. Using and interpreting cost-effectiveness  
1122 acceptability curves: an example using data from a trial of management strategies for atrial  
1123 fibrillation. *BMC Health Services Research*. 2006;6(1):52.
- 1124 87. National Institute for Health and Care Research (NIHR). *Payments guidance for members of*  
1125 *the public, Version 1.4. 2023* [Available from: [https://www.nihr.ac.uk/documents/payment-](https://www.nihr.ac.uk/documents/payment-guidance-for-members-of-the-public-considering-involvement-in-research/27372)  
1126 [guidance-for-members-of-the-public-considering-involvement-in-research/27372](https://www.nihr.ac.uk/documents/payment-guidance-for-members-of-the-public-considering-involvement-in-research/27372)].

1127

#### 1128 **Authors' contributions [31b]**

1129 MCM led the funding proposal and protocol development with support from all co-authors  
1130 (DG, ES, ASA, SB, CC, EC, SUD, CF, SH, PH, FK, CMcD, EM, JWV) who provided expert  
1131 input on trial design and intervention content. MCM, ES and DG co-ordinated the ethical  
1132 approval. DG drafted the protocol manuscript. All authors (DG, ES, ASA, SB, CC, EC, SUD,  
1133 CF, SH, PH, FK, CMcD, EM, JWV, MCM) contributed to the revision of the manuscript and  
1134 have read and approved the final version.

1135

#### 1136 **Funding Statement [4]**

1137 This trial is supported by the NIHR Public Health Research (PHR) Programme  
1138 (NIHR131509) and intervention costs provided by the Northern Ireland Public Health  
1139 Agency.

1140



1141 **Competing interests' statement [28]**

1142 The CI, PIs, co-investigators, trial staff and TSC are required to disclose information on  
1143 competing interests that might influence the trial integrity, such as commercial ownership  
1144 interests. A record of competing interests is retained by the Trial Manager for reporting in all  
1145 trial publications.

1146

1147 Acknowledgements

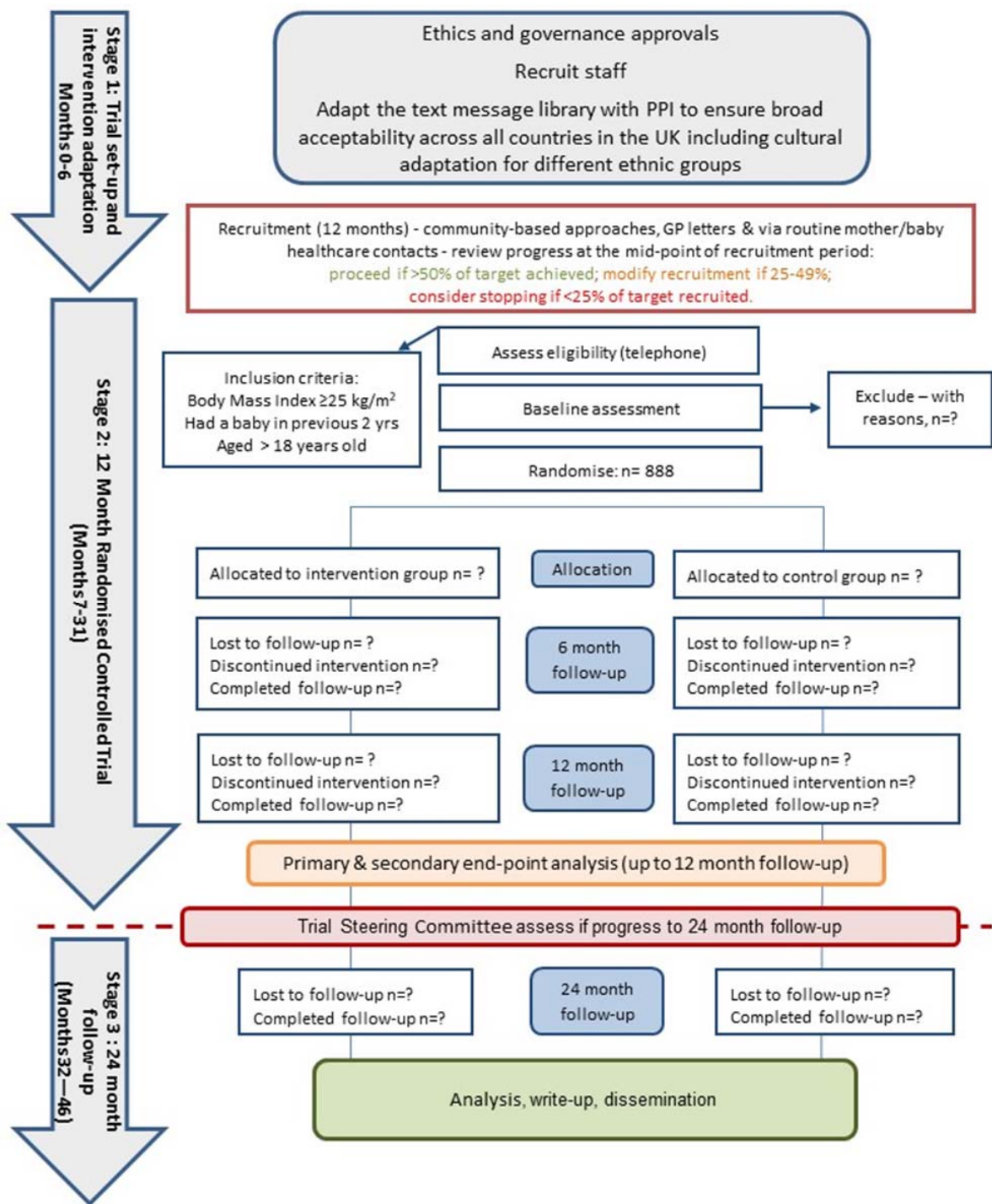
1148 For the purpose of open access, the author has applied a Creative Commons Attribution (CC  
1149 BY) licence to any Author Accepted Manuscript version arising from this submission.

1150

1151 **Word Count:** 9118

1152

1153



1

2