

1 **Insulin-like Growth Factor 1 Receptor Expression Correlates**
2 **with Programmed Death Ligand 1 Expression and Poor**
3 **Survival in Non-small Cell Lung Cancer**

4

5 Hiroaki Nagamine^{1,3¶}, Masakazu Yashiro^{2*¶}, Megumi Mizutani³, Akira Sugimoto³,

6 Yoshiya Matsumoto³, Yoko Tani⁴, Kenji Sawa⁴, Hiroyasu Kaneda⁴, Kazuhiro Yamada³,

7 Tetsuya Watanabe³, Kazuhisa Asai³, Satoshi Suzuki^{5&}, Tomoya Kawaguchi^{3,4}

8

9 1 Department of Respiratory Medicine, Osaka City University, Graduate School of
10 Medicine, Osaka, Japan

11 2 Molecular Oncology and Therapeutics, Osaka Metropolitan University, Graduate
12 School of Medicine, Osaka, Japan

13 3 Department of Respiratory Medicine, Osaka Metropolitan University, Graduate
14 School of Medicine, Osaka, Japan

15 4 Department of Clinical Oncology, Osaka Metropolitan University, Graduate School
16 of Medicine, Osaka, Japan

17 5 Department of Thoracic Surgery, Osaka Metropolitan University, Graduate School
18 of Medicine, Osaka, Japan

NOTE: This preprint reports new research that has not been certified by peer review and should not be used to guide clinical practice.

19

20 ***Corresponding Author:**

21 Masakazu Yashiro

22 ORCID: Masakazu Yashiro (<https://orcid.org/0000-0001-5743-7228>)

23 Email: i21496f@omu.ac.jp (MY)

24

25 ¶These authors contributed equally to this work.

26 &These authors also contributed equally to this work.

27

28 **Short title: IGF1R is associated with PD-L1 expression and poor survival in**

29 **NSCLC**

30

31 **Keywords: IGF1R, lung cancer, NSCLC, OS, PD-L1, RFS**

32 **Abstract**

33 The insulin-like growth factor 1 receptor (IGF1R) has been associated with growth and
34 metastasis in various cancers. However, its role in postoperative recurrence and
35 prognosis in lung cancer lacks clear consensus. Therefore, this study aimed to
36 investigate the potential relationship between IGF1R and postoperative recurrence as
37 well as long-term survival in a large cohort. Additionally, we assessed the relationship
38 between IGF1R and programmed death ligand 1 (PD-L1) expression. Our study
39 encompassed 782 patients with non-small cell lung cancer (NSCLC). Immunostaining
40 of surgical specimens was performed to evaluate IGF1R and PD-L1 expression. Among
41 the patients, 279 (35.8%) showed positive IGF1R expression, with significantly worse
42 relapse-free survival (RFS) and overall survival (OS). Notably, no significant
43 differences in RFS and OS were observed between IGF1R-positive and -negative
44 groups in stages 2 and 3. However, in the early stages (0-1), the positive group
45 displayed significantly worse RFS and OS. In addition, PD-L1 expression was detected
46 in 100 (12.8%) patients, with a significant predominance in the IGF1R-positive. IGF1R
47 may serve as a prognostic indicator and a guide for perioperative treatment strategies in
48 early-stage lung cancer. In conclusion, our findings underscore an association between
49 IGF1R expression and poor survival and PD-L1 expression in NSCLC.

50 **Introduction**

51 The insulin-like growth factor 1 receptor (IGF1R) is expressed in various
52 cancers [1-3] and is associated with cancer growth [4], metastasis [5, 6], and
53 malignancy [7, 8]. In lung cancer, particularly non-small cell lung cancer (NSCLC),
54 IGF1R expression is associated with carcinogenesis and proliferation [9, 10].
55 Nevertheless, the association between IGF1R expression and postoperative prognosis as
56 well as recurrence in lung cancer has been inconsistent [11-14], lacking a definitive
57 consensus.

58 In recent years, the expression of programmed death ligand 1 (PD-L1) has
59 attracted attention as a predictor of immune checkpoint inhibitor (ICI) efficacy in the
60 treatment of lung cancer [15]. Although the expression of IGF1R and PD-L1 has been
61 implicated in head and neck squamous cell carcinoma [16], their role in lung cancer
62 remains unknown. The development of lung cancers, particularly squamous cell
63 carcinoma (SCC), has been associated with smoking [17]. Moreover, smoking is known
64 to be involved in tumor-induced IGF1R expression [10]. However, it remains unclear
65 whether IGF1R expression is associated with smoking and PD-L1 expression in actual
66 clinical practice and whether it is involved in postoperative recurrence and survival in
67 lung cancer. Therefore, this study aimed to investigate the potential associations

68 between IGF1R expression, PD-L1 expression, smoking history, postoperative
69 recurrence, and survival in lung cancer. To our knowledge, this is the first study to
70 comprehensively evaluate the relationship between IGF1R and these critical factors
71 using long-term observations on a large scale. We anticipate that our findings will
72 contribute to the ongoing efforts to optimize lung cancer management, leading to more
73 effective and personalized therapeutic interventions in the realm of precision medicine.

74 **Materials and methods**

75 **Patient and data collection**

76 A total of 782 patients with NSCLC who underwent surgery at the Osaka
77 Metropolitan University Hospital between January 2010 and December 2019 were
78 included in this study. Cancer stage for all patients was assessed according to the Union
79 for International Cancer Control, 8th edition. Relapse-free survival (RFS) was
80 calculated from the date of surgery to the date of first recurrence or death from any
81 cause. Overall survival (OS) was calculated from the date of surgery to the date of death
82 from any cause. Our observations were conducted retrospectively, with August 31,
83 2023, as the data cutoff date, spanning a maximum of 10 years. At the cut-off date or 10
84 years after the start of observation, cases with no events were terminated from
85 observation. Between September 1, 2023, and October 31, 2023, we accessed medical
86 records for the collection of information, including personally identifiable details,
87 related to registered patients. This study was approved by the Osaka City university
88 Ethics Committee (reference number 2019-006). Informed consent was obtained from
89 each patient. This study has been conducted according to the principles of the
90 declaration of Helsinki.

91 **Immunohistochemistry**

92 Immunohistochemical staining was performed on paraffin-embedded sections
93 of primary surgically resected specimens obtained from patients with NSCLC. Slides
94 were deparaffinized using xylene and rehydrated with gradually decreasing
95 concentrations of ethyl alcohol. The slides were then incubated with methanol
96 containing 3% hydrogen peroxide at room temperature for 15 min to eliminate
97 endogenous peroxidase activity. Subsequently, the slides were heated in an autoclave at
98 105°C for 10 min in Target Retrieval Solution (Dako, Santa Clara, CA, USA).
99 Following this, the slides were blocked with 10% normal mouse serum for 10 min at
100 room temperature and incubated overnight at 4°C with the anti-IGF1R antibody
101 (NB110-87052, 1:200; Novus Biologicals LLC, Centennial, CO, USA). Subsequently,
102 the samples were incubated with a biotinylated secondary antibody for 10 min at room
103 temperature, followed by treatment with streptavidin-peroxidase reagent for 5 min at
104 room temperature, incubation in diaminobenzidine for 2 min at room temperature, and
105 counterstaining with 100% Mayer's hematoxylin for 40 s at room temperature. For PD-
106 L1 staining, sections were blocked with 10% normal rabbit serum, and an anti-PD-L1
107 antibody (ab205921, 1:150, Abcam, Cambridge, UK) was used as the primary antibody,
108 followed by reaction with diaminobenzidine for 7 min.

109 **Statistical analysis**

110 The χ^2 test was employed to evaluate the significance of differences in patient
111 characteristics between the IGF1R-positive and IGF1R-negative groups. Multiple
112 logistic regression analysis was utilized to analyze the relationship between IGF1R and
113 PD-L1 expression, incorporating factors age, sex, smoking history, Eastern Cooperative
114 Oncology Group Performance Status (ECOG PS), histology, pStage, pleural invasion,
115 lymphatic invasion, and vascular invasion. The Mann–Whitney U test was applied to
116 evaluate differences in smoking index or maximum tumor diameter between the IGF1R-
117 positive and negative groups. Survival curves were generated using Kaplan–Meier
118 method, and the log-rank test was used to compare cumulative survival durations in the
119 patient groups. In addition, the Cox proportional hazards model was used to compute
120 univariable and multivariable hazard ratios for the study parameters. Analyses were
121 performed using EZR in R Commander version 1.54 (Saitama Medical Center, Jichi
122 Medical University, Saitama, Japan). In all tests, $p < 0.05$ was considered to indicate
123 statistical significance.

124 **Results**

125 **Patient characteristics and the association of IGF1R expression with** 126 **smoking history and tumor size**

127 A total of 782 patients were included in this study. Both IGF1R and PD-L1
128 were predominantly stained in the cytoplasm (Fig. 1A and 1B). IGF1R was identified as
129 positive in 279 patients (35.8%). The median age of the participants was 70.0 years
130 (range=33-91), with 497 (63.6%) patients being male. Five hundred twenty-one patients
131 had adenocarcinoma, 217 had SCC, 14 had adenosquamous cell carcinoma, 11 had
132 large cell carcinoma, nine had pleomorphic carcinoma, three had large cell
133 neuroendocrine carcinoma, two had adenocarcinoma in situ, one had mixed
134 adenocarcinoma and small cell carcinoma, one had SCC and small cell carcinoma, one
135 had NSCLC not otherwise specified, one had mucoepidermoid carcinoma, and one had
136 atypical adenomatous hyperplasia. The IGF1R-positive group exhibited significantly
137 higher proportions of patients who were ≥ 65 years old, male, had a smoking history, a
138 performance status (PS) ≥ 1 , had SCC, pStage ≥ 2 , exhibited pleural invasion, had
139 vascular invasion, or showed PD-L1 expression (all $p < 0.01$, $p < 0.01$, $p < 0.01$, $p < 0.01$,
140 $p < 0.01$, $p < 0.01$, $p = 0.02$, $p < 0.01$, $p < 0.01$, respectively) (Table 1). Multivariable analysis
141 revealed that PD-L1 expression is associated with IGF1R expression (Table 2). Both

142 IGF1R-positive and PD-L1-positive group had a significantly higher smoking index
143 ($p<0.01$) (Fig. 2A and 2 B), and the IGF1R-positive group had a significantly larger
144 maximum tumor diameter ($p<0.01$) (Fig. 2C).

145 **Fig 1. Immunostaining for IGF1R and PD-L1.**

146 **(A)** Immunostaining for IGF1R reveals predominant cytoplasmic staining. **(B)**
147 Immunostaining for PD-L1 reveals predominant cytoplasmic staining.

148 **Table 1. Patient characteristics.**

	No. of all patients n=782	IGF1R positive n=279 (35.8%)	IGF1R negative n= 503 (64.2%)	p-value
Age				
<65	200 (25.6%)	50 (17.9%)	150 (29.8%)	<0.01
≥65	582 (74.4%)	229 (82.1%)	353 (70.2%)	
Sex				
Male	497 (63.6%)	210 (75.3%)	287 (57.1%)	<0.01
Female	285 (36.4%)	69 (24.7%)	216 (42.9%)	
Smoking history				
Current/Former	587 (75.1%)	243 (87.1%)	344 (68.4%)	<0.01
Never	195 (24.9%)	36 (12.9%)	159 (31.6%)	
ECOG PS				
0	573 (73.3%)	193 (68.8%)	380 (75.4%)	<0.01
1-3	115 (14.7%)	56 (20.2%)	59 (11.7%)	
Histology				
Sq	218 (27.9%)	137 (49.1%)	81 (16.1%)	<0.01
Non Sq	564 (72.1%)	142 (50.9%)	422 (83.9%)	
pStage				
0-1	494 (63.2%)	137 (49.1%)	357 (71.0%)	<0.01
2-3	288 (36.8%)	142 (50.9%)	146 (29.0%)	
Adjuvant therapy				
Done	192 (24.6%)	72 (25.8%)	120 (23.9%)	0.55
None	590 (75.4%)	207 (74.2%)	383 (76.1%)	
Pleural invasion				

Positive	228 (29.2%)	96 (34.4%)	132 (26.2%)	0.02
Negative	548 (70.1%)	181 (64.9%)	367 (73.0%)	
Lymphatic invasion				
Positive	212 (27.1%)	78 (28.0%)	134 (26.6%)	0.74
Negative	566 (72.4%)	200 (71.7%)	366 (72.8%)	
Vascular invasion				
Positive	169 (21.6%)	98 (35.1%)	71 (14.1%)	<0.01
Negative	609 (77.9%)	180 (64.5%)	429 (85.3%)	
PD-L1				
Positive	100 (12.8%)	68 (24.4%)	32 (6.4%)	<0.01
Negative	682 (87.2%)	211 (75.6%)	471 (93.6%)	

149 IGF1R, insulin-like growth factor 1 receptor; ECOG PS, Eastern Cooperative Oncology

150 Group Performance Status; Sq, squamous cell carcinoma; PD-L1, programmed death

151 ligand 1.

152 **Table 2. Multivariate analysis of the relationship between IGF1R expression and**

153 **PD-L1 expression.**

Factor	Reference	OR (95%CI)	p-value
PD-L1	Negative	3.35 (1.95-5.73)	<0.01

154 IGF1R, insulin-like growth factor 1 receptor; OR, odds ratio; CI, confidence intervals;

155 PD-L1, programmed death ligand 1.

156 **Fig 2. The association between IGF1R or PD-L1 and smoking index, as well as the**
157 **correlation between IGF1R and tumor size.**

158 (A) Comparison of smoking index between the IGF1R-positive and negative groups.
159 The IGF1R-positive group had a significantly larger smoking index. (B) Comparison of
160 smoking index between PD-L1-positive and negative groups. The PD-L1-positive group
161 had a significantly larger smoking index. (C) Comparison of maximum tumor diameter
162 between IGF1R-positive and negative groups. The IGF1R-positive group had a
163 significantly larger maximum tumor diameter.

164 **Relationship between IGF1R and relapse-free survival or overall**
165 **survival**

166 In all patients, IGF1R positivity was associated with worse RFS ($p < 0.01$) and
167 OS ($p < 0.01$) (Fig. 3A and 3B). When evaluated by stage, IGF1R positivity was
168 associated with worse RFS ($p < 0.01$) and OS ($p < 0.01$) in Stage 0-1 (Fig. 4A and 4B).
169 However, no significant differences in RFS or OS were observed between IGF1R-
170 positive and negative patients in Stage 2 ($p = 0.60$ and $p = 0.80$, respectively) (Fig. 5A and
171 5B) or Stage 3 ($p = 0.89$ and $p = 0.15$, respectively) (Fig. 6A and 6B). In univariable
172 analysis of RFS in stage 0-1 patients, IGF1R positivity, male, smoking history, ECOG
173 PS ≥ 1 , pStage 2-3, pleural invasion, lymphatic invasion, and vascular invasion were all

174 associated with significantly worse PFS (Table 3). In the multivariable analysis of RFS
175 in stage 0-1 patients, smoking history, ECOG PS \geq 1, lymphatic invasion, and vascular
176 invasion were associated with significantly worse PFS (Table 3). In univariable analysis
177 of OS in stage 0-1 patients, IGF1R positivity, male, smoking history, ECOG PS \geq 1, SCC
178 and vascular invasion were all associated with significantly worse OS (Table 4). In the
179 multivariable analysis of OS in stage 0-1 patients, ECOG PS \geq 1 was associated with
180 significantly worse OS (Table 4).

181 **Fig 3. Kaplan-Meier curve depicting RFS and OS for all patients.**

182 (A) Kaplan-Meier curve depicting RFS for all patients. The IGF1R-positive group
183 exhibited significantly worse RFS. (B) Kaplan-Meier curve depicting OS for all
184 patients. The IGF1R-positive group exhibited significantly worse OS.

185 **Fig 4. Kaplan-Meier curve depicting RFS and OS in stage 0-1 patients.**

186 (A) Kaplan-Meier curve depicting RFS in stage 0-1 patients. The IGF1R-positive group
187 exhibited significantly worse RFS. (B) Kaplan-Meier curve depicting OS in stage 0-1
188 patients. The IGF1R-positive group exhibited significantly worse OS.

189 **Fig 5. Kaplan-Meier curve depicting RFS and OS in stage 2 patients.**

190 (A) Kaplan-Meier curve depicting RFS in stage 2 patients. No significant difference was
191 observed between the IGF1R-positive and negative groups. (B) Kaplan-Meier curve for

192 OS in stage 2 patients. No significant difference was observed between the IGF1R-
193 positive and negative groups.

194 **Fig 6. Kaplan-Meier curve depicting RFS and OS in stage 3 patients.**

195 **(A)** Kaplan-Meier curve depicting RFS in stage 3 patients. No significant difference in
196 RFS was observed between the IGF1R-positive and negative groups. **(B)** Kaplan-Meier
197 curve depicting OS in stage 3 patients. No significant difference was observed between
198 the IGF1-positive and negative groups.

199 **Table 3. Multivariable analysis of RFS in stage 0-1 patients.**

Factor	Reference	RFS of stage 0-1 patients (n=494)					
		Univariable analysis			Multivariable analysis		
		HR	95%CI	p-value	HR	95%CI	p-value
IGF1R	Negative	1.71	1.23-2.40	<0.01	1.29	0.85-1.96	0.23
Age	≤64	1.34	0.91-1.95	0.14			
Sex	Female	2.05	1.45-2.89	<0.01	1.35	0.87-2.11	0.18
Smoking history	Never	2.41	1.62-3.58	<0.01	1.75	1.04-2.95	0.04
ECOG PS	0	2.13	1.37-3.30	<0.01	2.05	1.30-3.23	<0.01
Histology	NonSq	1.52	1.05-2.21	0.03	0.73	0.45-1.18	0.20
Adjuvant therapy	Done	0.66	0.66-1.68	0.84			
Pleural invasion	Negative	1.93	1.35-2.76	<0.01	1.32	0.87-2.04	0.19

Lymphatic invasion	Negative	2.26	1.57-3.25	<0.01	1.70	1.10-2.63	0.02
Vascular invasion	Negative	2.68	1.80-3.98	<0.01	1.91	1.17-3.12	<0.01
PD-L1	Negative	1.49	0.90-2.47	0.12			

200 RFS, relapse-free survival; HR, hazard ratio; CI, confidence intervals; IGF1R, insulin-
 201 like growth factor 1 receptor; ECOG PS, Eastern Cooperative Oncology Group
 202 Performance Status; Sq, squamous cell carcinoma; PD-L1, programmed death ligand 1.

203 **Table 4. Multivariable analysis of OS in stage 0-1 patients.**

OS of stage 0-1 patients (n=494)							
Factor	Reference	Univariable analysis			Multivariable analysis		
		HR	95%CI	p-value	HR	95%CI	p-value
IGF1R	Negative	1.98	1.35-2.91	<0.01	1.40	0.86-2.29	0.17
Age	≤64	1.26	0.81-1.94	0.31			
Sex	Female	2.79	1.82-4.29	<0.01	1.69	0.99-2.91	0.06
Smoking history	Never	2.81	1.73-4.57	<0.01	1.70	0.90-3.21	0.10
ECOG PS	0	2.61	1.60-4.28	<0.01	2.24	1.34-3.73	<0.01
Histology	NonSq	2.10	1.39-3.16	<0.01	0.95	0.55-1.64	0.86
Adjuvant therapy	Done	1.14	0.65-1.99	0.65			
Pleural invasion	Negative	1.34	0.86-2.09	0.20			
Lymphatic invasion	Negative	1.39	0.86-2.23	0.18			
Vascular invasion	Negative	2.19	1.36-3.53	<0.01	1.52	0.85-2.70	0.15

PD-L1	Negative	1.71	0.98-3.01	0.06
-------	----------	------	-----------	------

204 OS, overall survival; HR, hazard ratio; CI, confidence intervals; IGF1R, insulin-like
205 growth factor 1 receptor; ECOG PS, Eastern Cooperative Oncology Group Performance
206 Status; Sq, squamous cell carcinoma; PD-L1, programmed death ligand 1.

207 **Discussion**

208 Although previous reports have not consistently linked IGF1R expression to
209 postoperative recurrence or prognosis in lung cancer [11-14], our large-scale, long-term
210 observational study demonstrates that IGF1R expression is associated with worse RFS
211 and OS, particularly in the early stages. In addition, in this study, IGF1R expression was
212 significantly correlated with PD-L1 expression, smoking history, and tumor size.

213 The IGF1R-positive group also showed significantly larger tumor sizes. IGF1R
214 is a factor associated with tumor growth [4], consistent with a relationship between
215 IGF1R expression and tumor size. In addition, IGF1R expression was associated with
216 shorter RFS and OS, particularly in early-stage lung cancer. Many treatment strategies
217 using ICI for neoadjuvant and adjuvant chemotherapy have been developed in recent
218 years [18, 19]. However, due to the favorable prognosis of early-stage lung cancer, it
219 was less amenable to the benefits of neoadjuvant and adjuvant chemotherapy. Based on
220 our study findings, IGF1R expression may serve as an informative marker for
221 determining appropriate perioperative chemotherapy for patients with early-stage lung
222 cancer. Furthermore, despite promising preclinical indications, IGF1R inhibitors have
223 not proven consistently effective in various types of cancer in clinical trials [20-22].
224 However, recent mouse experiments have revealed that reduced IGF1R expression

225 enhances the effects of ICI [23], and that IGF1R expression correlates with the tumor
226 microenvironment [24], including immune cells. Combining IGF1R inhibitors with ICI
227 may hold promise for future therapies, especially as perioperative treatment for early-
228 stage lung cancer.

229 In this study, we observed a positive correlation between the expression of
230 IGF1R and PD-L1. Notably, in head and neck squamous cell carcinoma, where smoking
231 poses a risk [25], Interleukin-6 (IL-6) has been reported to upregulate IGF1R and PD-
232 L1 expression [16]. In the present study, the IGF1R-positive group had a significantly
233 higher smoking index, consistent with previous studies linking IGF1R expression to
234 smoking [14]. Smoking induces IL-6 expression in the lungs [26], potentially
235 contributing to the upregulation of both IGF1R and PD-L1 expression in lung cancer.
236 Additionally, the IGF1R-positive group had a significantly higher proportion of SCC,
237 widely known to be associated with smoking [17]. Smoking-induced inflammation also
238 enhances COX2 expression, which is associated with IGF1R expression in lung cancer
239 [10]. Various smoking-related mechanisms, such as IL-6 and COX-2, may elucidate the
240 association between IGF1R expression, smoking, SCC, and PD-L1 expression.
241 However, further research is needed to elucidate the mechanism of co-expression of
242 IGF1R and PD-L1. Our unpublished data indicate that OMUL-1, a human squamous

243 lung cancer cell line, expresses high levels of both IGF1R and PD-L1. This cell line
244 may be useful for analyzing the mechanisms responsible for the co-expression of
245 IGF1R and PD-L1.

246 IGF1R expression was correlated with various factors, such as PD-L1, sex, and
247 age, which differed between the IGF1R-positive and negative groups. Additionally,
248 IGF1R expression was positively correlated with smoking index. Given the high
249 prevalence of male smokers in Japan [27], the prevalence of IGF1R-positive lung
250 cancer may be higher in males. Moreover, the smoking index tends to be higher in older
251 patients, and the population of nonsmokers has decreased in recent years [27], which
252 may explain the large number of older adults in the IGF1R-positive group.

253 One limitation of this study stems from its retrospective design. Further
254 research and prospective study are necessary to fully understand the clinical
255 implications of IGF1R expression.

256 In conclusion, our study reveals that higher IGF1R expression correlates with
257 poorer outcomes in terms of RFS and OS, particularly in patients with early-stage lung
258 cancer. Furthermore, our findings indicate a relationship between IGF1R expression in
259 lung cancer and several factors: PD-L1 expression, smoking history, and tumor size.

260 **Acknowledgment**

261 We express our gratitude to Akiko Tsuda from the Molecular Oncology and
262 Therapeutics department at Osaka Metropolitan University Graduate School of
263 Medicine for her valuable technical assistance.

264 **Author contributions**

265 Hiroaki Nagamine; conceptualization, data curation, formal analysis, investigation,
266 methodology, validation, visualization, writing original draft, writing review and editing
267 Masakazu Yashiro; conceptualization, data curation, formal analysis, investigation,
268 methodology, project administration, supervision, validation, visualization, writing
269 original draft, review and editing,
270 Megumi Mizutani; data curation, formal analysis, investigation, validation, review and
271 editing
272 Akira Sugimoto; data curation, formal analysis, investigation, validation, review and
273 editing
274 Yoshiya Matsumoto; methodology, review and editing
275 Yoko Tani; review and editing
276 Kenji Sawa; methodology, review and editing
277 Hiroyasu Kaneda; methodology, review and editing

278 Kazuhiro Yamada; methodology, validation, supervision, review and editing

279 Tetsuya Watanabe; supervision, review and editing

280 Kazuhisa Asai; supervision, review and editing

281 Satoshi Suzuki; data curation, formal analysis, investigation, validation, review and

282 editing

283 Tomoya Kawaguchi; review and editing

284 **Competing interests**

285 The authors declare no competing interests.

286 **Ethics declarations**

287 This study was approved by the Osaka City university Ethics Committee (reference

288 number 2019-006). Informed consent was obtained from the patient. This study has

289 been conducted according to the principles of the declaration of Helsinki.

290 **References**

291

- 292 1. Wu J, Yu E. Insulin-like growth factor receptor-1 (IGF-IR) as a target for prostate cancer
293 therapy. *Cancer Metastasis Rev.* 2014;33(2-3):607-17. doi: 10.1007/s10555-013-9482-0.
294 PubMed PMID: 24414227; PubMed Central PMCID: PMC4096322.
- 295 2. Motallebnezhad M, Aghebati-Maleki L, Jadidi-Niaragh F, Nickho H, Samadi-Kafil H,
296 Shamsasenjan K, et al. The insulin-like growth factor-I receptor (IGF-IR) in breast cancer: biology
297 and treatment strategies. *Tumour Biol.* 2016;37(9):11711-21. Epub 20160721. doi:
298 10.1007/s13277-016-5176-x. PubMed PMID: 27444280.
- 299 3. Hu L, Xu X, Li Q, Chen X, Yuan X, Qiu S, et al. Caveolin-1 increases glycolysis in
300 pancreatic cancer cells and triggers cachectic states. *Faseb j.* 2021;35(8):e21826. doi:
301 10.1096/fj.202100121RRR. PubMed PMID: 34320244.
- 302 4. Heidegger I, Kern J, Ofer P, Klocker H, Massoner P. Oncogenic functions of IGF1R and
303 INSR in prostate cancer include enhanced tumor growth, cell migration and angiogenesis.
304 *Oncotarget.* 2014;5(9):2723-35. doi: 10.18632/oncotarget.1884. PubMed PMID: 24809298;
305 PubMed Central PMCID: PMC4058040.
- 306 5. Xu XL, Guo AX, Pan QY, Chang AL, Zhao CR. MiR-99a suppresses cell migration and
307 invasion by regulating IGF1R in gastric cancer. *Eur Rev Med Pharmacol Sci.* 2019;23(17):7375-
308 82. doi: 10.26355/eurrev_201909_18845. PubMed PMID: 31539124.
- 309 6. Alfaro-Arnedo E, López IP, Piñeiro-Hermida S, Canalejo M, Gotera C, Sola JJ, et al.
310 IGF1R acts as a cancer-promoting factor in the tumor microenvironment facilitating lung
311 metastasis implantation and progression. *Oncogene.* 2022;41(28):3625-39. Epub 20220610. doi:
312 10.1038/s41388-022-02376-w. PubMed PMID: 35688943; PubMed Central PMCID:
313 PMC9184253.
- 314 7. Joehlin-Price AS, Stephens JA, Zhang J, Backes FJ, Cohn DE, Suarez AA. Endometrial
315 Cancer Insulin-Like Growth Factor 1 Receptor (IGF1R) Expression Increases with Body Mass
316 Index and Is Associated with Pathologic Extent and Prognosis. *Cancer Epidemiol Biomarkers Prev.*
317 2016;25(3):438-45. Epub 20151218. doi: 10.1158/1055-9965.Epi-15-1145. PubMed PMID:
318 26682991; PubMed Central PMCID: PMC45075967.
- 319 8. Du P, Liu F, Liu Y, Shao M, Li X, Qin G. Linc00210 enhances the malignancy of thyroid
320 cancer cells by modulating miR-195-5p/IGF1R/Akt axis. *J Cell Physiol.* 2020;235(2):1001-12.
321 Epub 20190625. doi: 10.1002/jcp.29016. PubMed PMID: 31240707.
- 322 9. Xu X, Qiu Y, Chen S, Wang S, Yang R, Liu B, et al. Different Roles of the Insulin-like
323 Growth Factor (IGF) Axis in Non-small Cell Lung Cancer. *Curr Pharm Des.* 2022;28(25):2052-

- 324 64. doi: 10.2174/1381612828666220608122934. PubMed PMID: 36062855.
- 325 10. Pöld M, Krysan K, Pöld A, Dohadwala M, Heuze-Vourc'h N, Mao JT, et al.
326 Cyclooxygenase-2 modulates the insulin-like growth factor axis in non-small-cell lung cancer.
327 *Cancer Res.* 2004;64(18):6549-55. doi: 10.1158/0008-5472.Can-04-1225. PubMed PMID:
328 15374967.
- 329 11. Dziadziuszko R, Merrick DT, Witta SE, Mendoza AD, Szostakiewicz B, Szymanowska
330 A, et al. Insulin-like growth factor receptor 1 (IGF1R) gene copy number is associated with survival
331 in operable non-small-cell lung cancer: a comparison between IGF1R fluorescent in situ
332 hybridization, protein expression, and mRNA expression. *J Clin Oncol.* 2010;28(13):2174-80.
333 Epub 20100329. doi: 10.1200/jco.2009.24.6611. PubMed PMID: 20351332; PubMed Central
334 PMCID: PMCPMC2860435.
- 335 12. Gately K, Forde L, Cuffe S, Cummins R, Kay EW, Feuerhake F, et al. High coexpression
336 of both EGFR and IGF1R correlates with poor patient prognosis in resected non-small-cell lung
337 cancer. *Clin Lung Cancer.* 2014;15(1):58-66. Epub 20131107. doi: 10.1016/j.clcc.2013.08.005.
338 PubMed PMID: 24210543.
- 339 13. Nakagawa M, Uramoto H, Oka S, Chikaishi Y, Iwanami T, Shimokawa H, et al. Clinical
340 significance of IGF1R expression in non-small-cell lung cancer. *Clin Lung Cancer.*
341 2012;13(2):136-42. Epub 20111201. doi: 10.1016/j.clcc.2011.10.006. PubMed PMID: 22133293.
- 342 14. Zhao S, Qiu Z, He J, Li L, Li W. Insulin-like growth factor receptor 1 (IGF1R) expression
343 and survival in non-small cell lung cancer patients: a meta-analysis. *Int J Clin Exp Pathol.*
344 2014;7(10):6694-704. Epub 20140915. PubMed PMID: 25400749; PubMed Central PMCID:
345 PMCPMC4230063.
- 346 15. Yu H, Boyle TA, Zhou C, Rimm DL, Hirsch FR. PD-L1 Expression in Lung Cancer. *J*
347 *Thorac Oncol.* 2016;11(7):964-75. Epub 20160423. doi: 10.1016/j.jtho.2016.04.014. PubMed
348 PMID: 27117833; PubMed Central PMCID: PMCPMC5353357.
- 349 16. Li J, Xiao Y, Yu H, Jin X, Fan S, Liu W. Mutual connected IL-6, EGFR and LIN28/Let7-
350 related mechanisms modulate PD-L1 and IGF upregulation in HNSCC using immunotherapy.
351 *Front Oncol.* 2023;13:1140133. Epub 20230412. doi: 10.3389/fonc.2023.1140133. PubMed
352 PMID: 37124491; PubMed Central PMCID: PMCPMC10130400.
- 353 17. Wang X, Wang T, Hua J, Cai M, Qian Z, Wang C, et al. Histological types of lung cancer
354 attributable to fine particulate, smoking, and genetic susceptibility. *Sci Total Environ.*
355 2023;858(Pt 2):159890. Epub 20221102. doi: 10.1016/j.scitotenv.2022.159890. PubMed PMID:
356 36334679.
- 357 18. Forde PM, Spicer J, Lu S, Provencio M, Mitsudomi T, Awad MM, et al. Neoadjuvant
358 Nivolumab plus Chemotherapy in Resectable Lung Cancer. *N Engl J Med.* 2022;386(21):1973-85.
359 Epub 20220411. doi: 10.1056/NEJMoa2202170. PubMed PMID: 35403841; PubMed Central

- 360 PMCID: PMCPMC9844511.
- 361 19. Felip E, Altorki N, Zhou C, Csőszi T, Vynnychenko I, Goloborodko O, et al. Adjuvant
362 atezolizumab after adjuvant chemotherapy in resected stage IB-IIIa non-small-cell lung cancer
363 (IMpower010): a randomised, multicentre, open-label, phase 3 trial. *Lancet*.
364 2021;398(10308):1344-57. Epub 20210920. doi: 10.1016/s0140-6736(21)02098-5. PubMed
365 PMID: 34555333.
- 366 20. Qu X, Wu Z, Dong W, Zhang T, Wang L, Pang Z, et al. Update of IGF-1 receptor
367 inhibitor (ganitumab, dalotuzumab, cixutumumab, teprotumumab and figitumumab) effects on
368 cancer therapy. *Oncotarget*. 2017;8(17):29501-18. doi: 10.18632/oncotarget.15704. PubMed
369 PMID: 28427155; PubMed Central PMCID: PMCPMC5438747.
- 370 21. Chiappori AA, Otterson GA, Dowlati A, Traynor AM, Horn L, Owonikoko TK, et al. A
371 Randomized Phase II Study of Linsitinib (OSI-906) Versus Topotecan in Patients With Relapsed
372 Small-Cell Lung Cancer. *Oncologist*. 2016;21(10):1163-4. Epub 20160930. doi:
373 10.1634/theoncologist.2016-0220. PubMed PMID: 27694157; PubMed Central PMCID:
374 PMCPMC5061534.
- 375 22. Fassnacht M, Berruti A, Baudin E, Demeure MJ, Gilbert J, Haak H, et al. Linsitinib (OSI-
376 906) versus placebo for patients with locally advanced or metastatic adrenocortical carcinoma: a
377 double-blind, randomised, phase 3 study. *Lancet Oncol*. 2015;16(4):426-35. Epub 20150318. doi:
378 10.1016/s1470-2045(15)70081-1. PubMed PMID: 25795408.
- 379 23. Ajona D, Ortiz-Espinosa S, Lozano T, Exposito F, Calvo A, Valencia K, et al. Short-term
380 starvation reduces IGF-1 levels to sensitize lung tumors to PD-1 immune checkpoint blockade.
381 *Nat Cancer*. 2020;1(1):75-85. Epub 20200113. doi: 10.1038/s43018-019-0007-9. PubMed
382 PMID: 35121837.
- 383 24. Galifi CA, Wood TL. Insulin-like growth factor-1 receptor crosstalk with integrins,
384 cadherins, and the tumor microenvironment: sticking points in understanding IGF1R function in
385 cancer. *Endocr Relat Cancer*. 2023;30(10). Epub 20230825. doi: 10.1530/erc-23-0031. PubMed
386 PMID: 37490874.
- 387 25. Hayes RB, Ahn J, Fan X, Peters BA, Ma Y, Yang L, et al. Association of Oral Microbiome
388 With Risk for Incident Head and Neck Squamous Cell Cancer. *JAMA Oncol*. 2018;4(3):358-65.
389 doi: 10.1001/jamaoncol.2017.4777. PubMed PMID: 29327043; PubMed Central PMCID:
390 PMCPMC5885828.
- 391 26. Francus T, Romano PM, Manzo G, Fonacier L, Arango N, Szabo P. IL-1, IL-6, and
392 PDGF mRNA expression in alveolar cells following stimulation with a tobacco-derived antigen.
393 *Cell Immunol*. 1992;145(1):156-74. doi: 10.1016/0008-8749(92)90320-o. PubMed PMID:
394 1423641.
- 395 27. Tanaka H, Mackenbach JP, Kobayashi Y. Widening Socioeconomic Inequalities in

396 Smoking in Japan, 2001-2016. J Epidemiol. 2021;31(6):369-77. Epub 20201125. doi:
397 10.2188/jea.JE20200025. PubMed PMID: 32595181; PubMed Central PMCID:
398 PMCPMC8126678.

399

Figure 1. Nagamine H. et al.

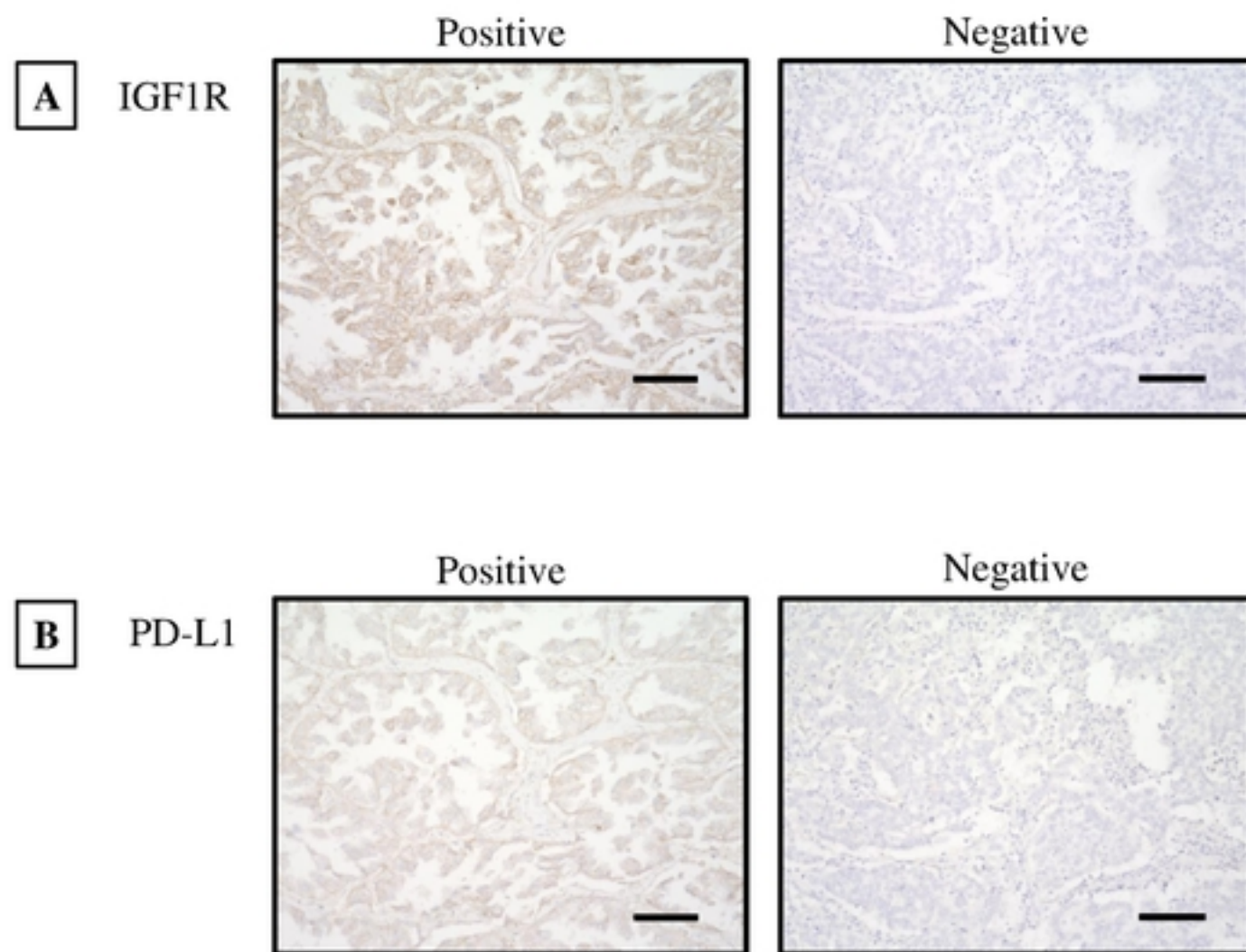
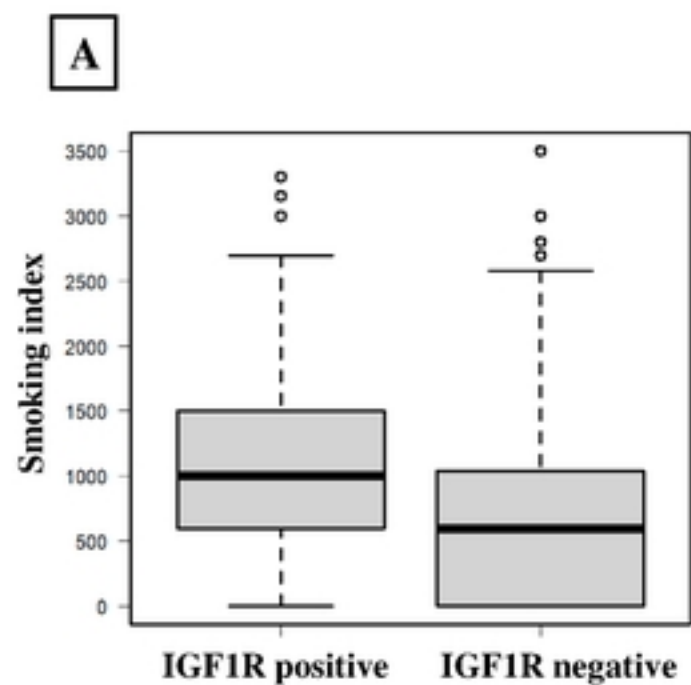
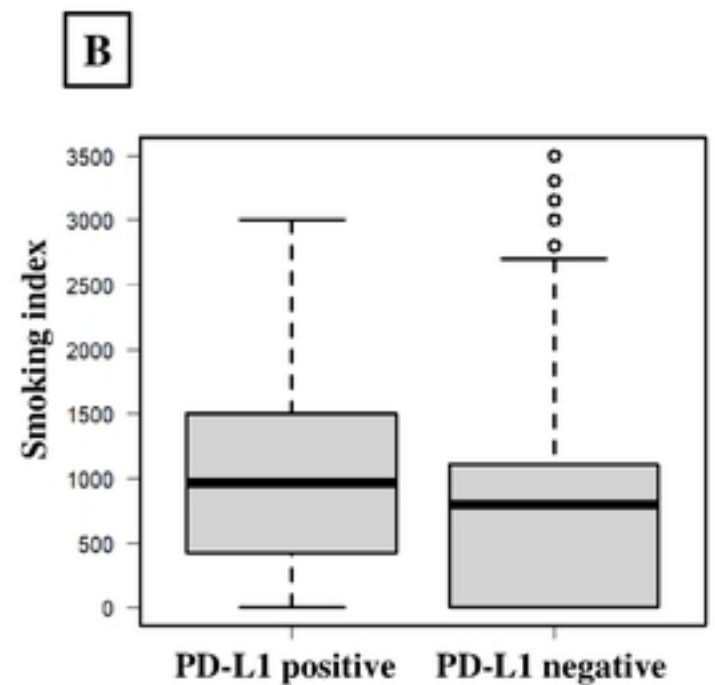


Figure1

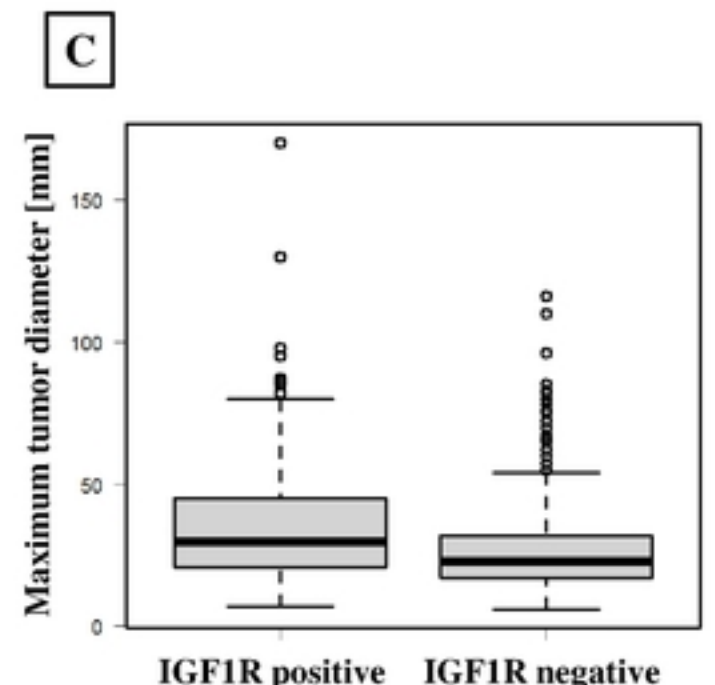
Figure 2. Nagamine H. et al.



	n	range	median (IQR)	p-value
IGF1R positive	279	0-3300	1000 (600-1500)	<0.01
IGF1R negative	502	0-3500	600 (0-1035)	



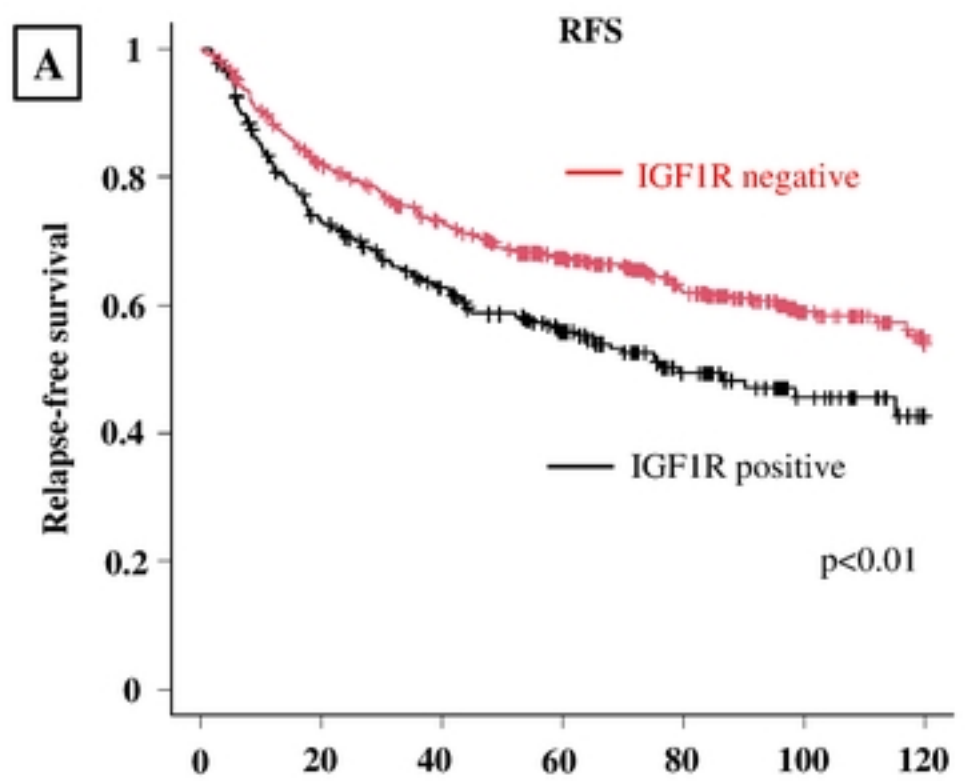
	n	range	median (IQR)	p-value
PD-L1 positive	279	0-3000	970 (437.5-1500)	<0.01
PD-L1 negative	502	0-3500	800 (0-1110)	



	n	range	median (IQR)	p-value
IGF1R positive	279	7-170	30 (21-45)	<0.01
IGF1R negative	503	6-116	23 (17-32)	

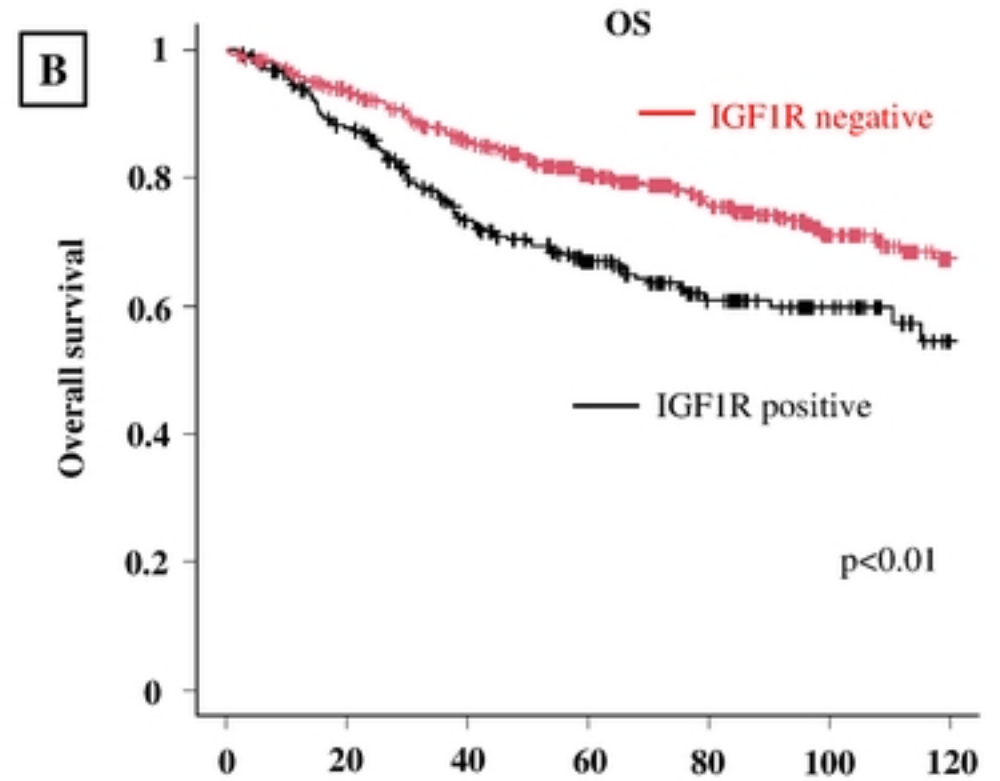
Figure2

Figure 3. Nagamine H. et al.



	Number at risk						
	0	20	40	60	80	100	120
Positive	279	196	152	103	55	28	0
Negative	503	400	341	273	181	93	0

	n	Median RFS (months)	95% CI
IGF1R positive	279	79.3	58.9-NA
IGF1R negative	503	NA	117.5-NA

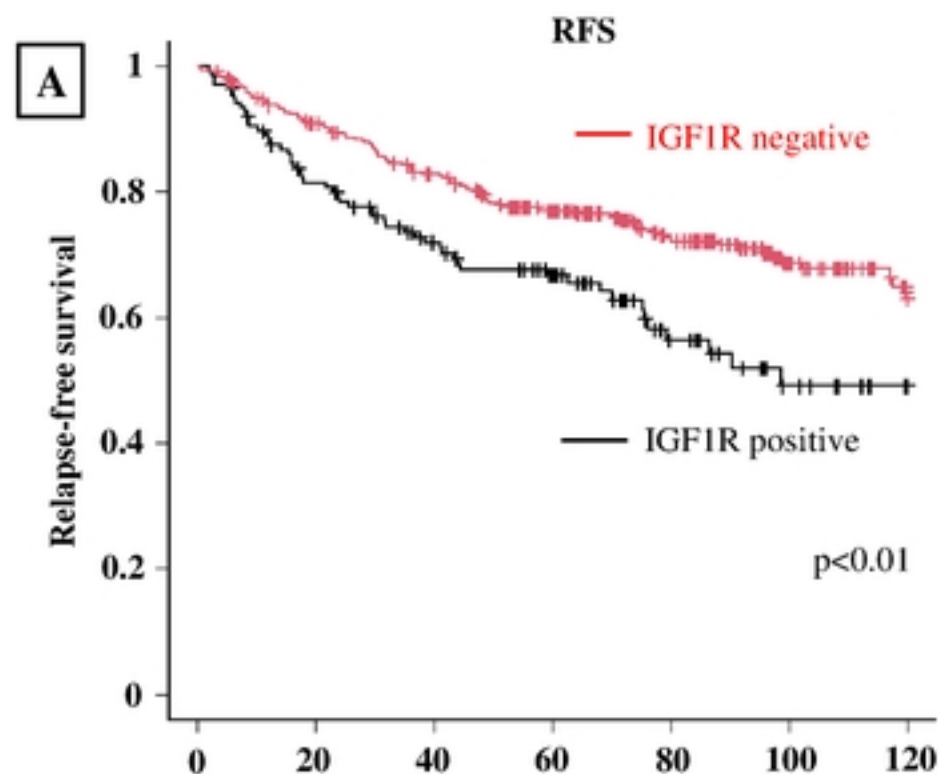


	Number at risk						
	0	20	40	60	80	100	120
Positive	279	232	172	118	64	36	0
Negative	503	453	390	312	212	114	0

	n	Median OS (months)	95% CI
IGF1R positive	279	NA	110.5-NA
IGF1R negative	503	NA	NA-NA

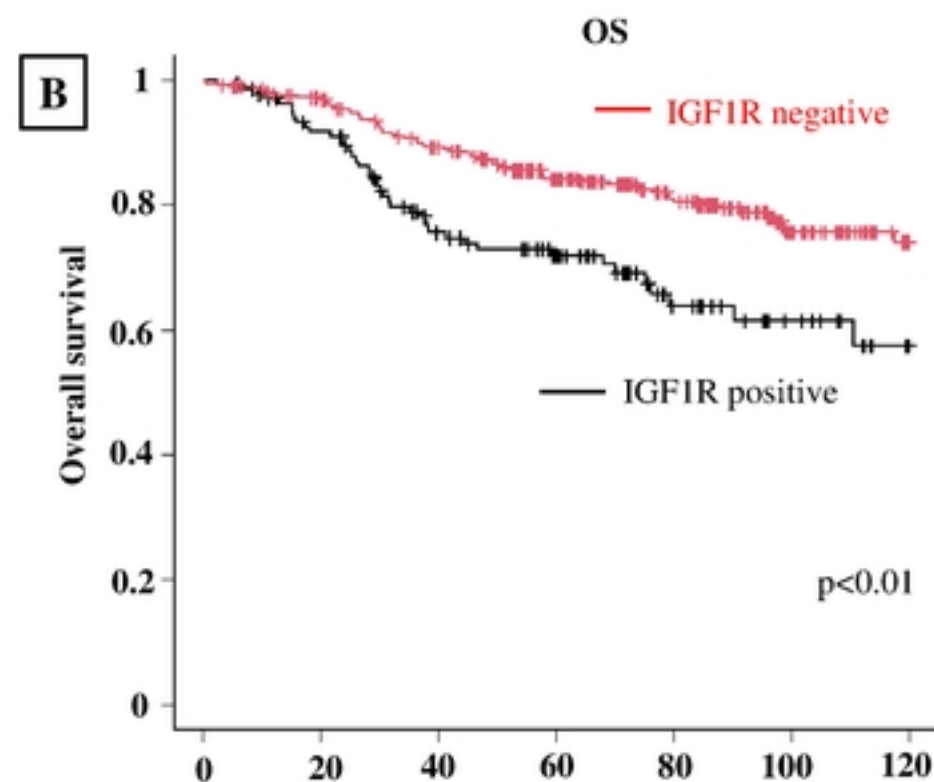
Figure3

Figure 4. Nagamine H. et al.



	Number at risk						
	0	20	40	60	80	100	120
Positive	137	107	85	62	31	16	0
Negative	357	315	278	226	153	79	0

	n	Median RFS (months)	95% CI
IGF1R positive	137	98.6	75.4-NA
IGF1R negative	357	NA	NA-NA

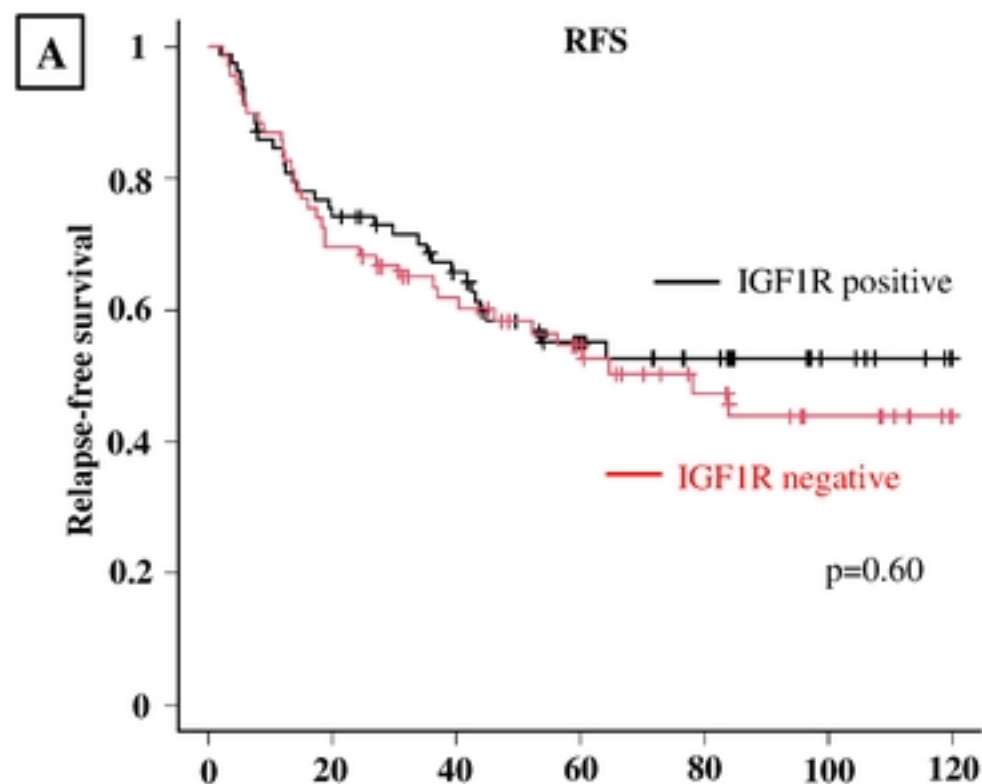


	Number at risk						
	0	20	40	60	80	100	120
Positive	137	119	88	65	33	20	0
Negative	357	334	296	240	166	87	0

	n	Median OS (months)	95% CI
IGF1R positive	137	NA	110.6-NA
IGF1R negative	357	NA	NA-NA

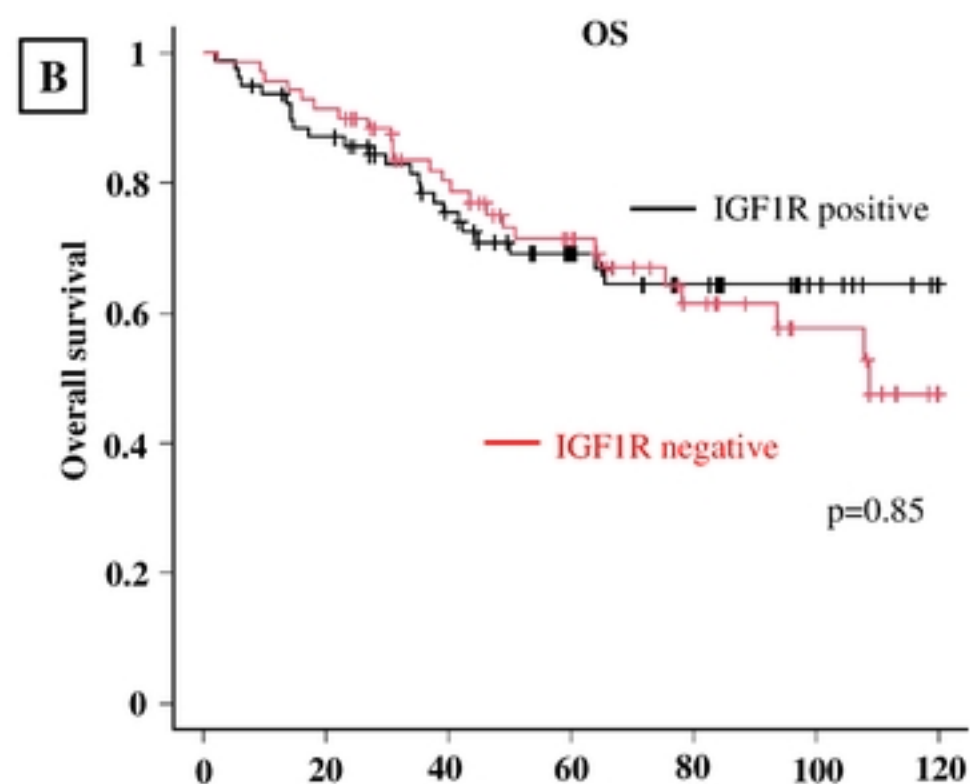
Figure4

Figure 5. Nagamine H. et al.



	Number at risk						
	0	20	40	60	80	100	120
Positive	78	58	45	27	17	8	0
Negative	69	48	37	27	16	9	0

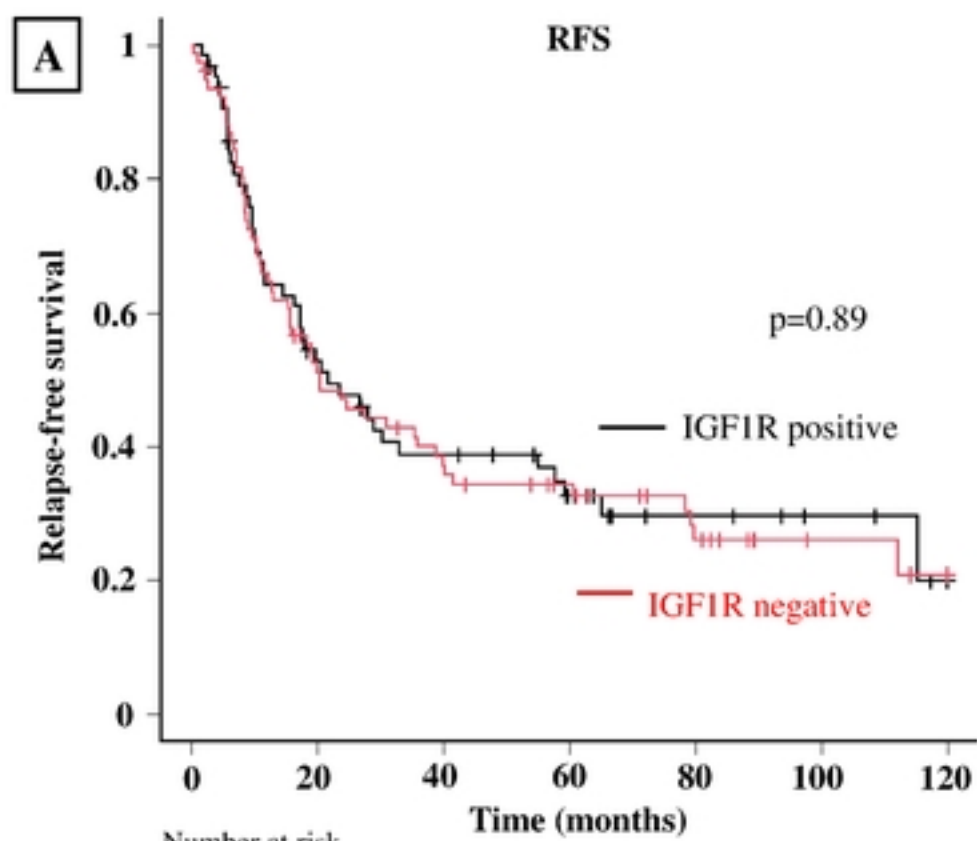
	n	Median RFS (months)	95% CI
IGF1R positive	78	NA	43.2-NA
IGF1R negative	69	78.3	37.0-NA



	Number at risk						
	0	20	40	60	80	100	120
Positive	78	66	50	33	20	10	0
Negative	69	63	48	36	21	12	0

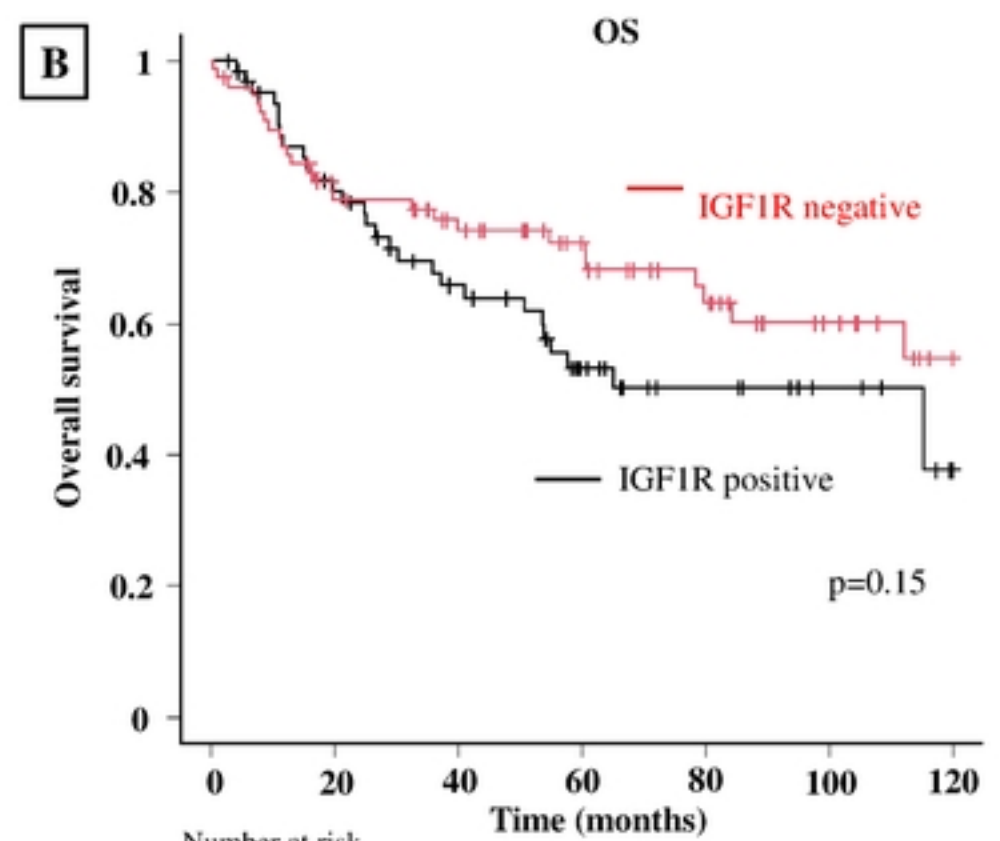
	n	Median OS (months)	95% CI
IGF1R positive	78	NA	NA-NA
IGF1R negative	69	108.8	78.3-NA

Figure 6. Nagamine H. et al.



	0	20	40	60	80	100	120
Positive	64	31	22	14	7	4	0
Negative	77	37	26	20	12	5	0

	n	Median RFS (months)	95% CI
IGFIR positive	64	21.8	14.6-55.0
IGFIR negative	77	20.4	13.1-39.0



	0	20	40	60	80	100	120
Positive	64	47	34	20	11	6	0
Negative	77	56	46	36	25	15	0

	n	Median OS (months)	95% CI
IGFIR positive	64	115.3	50.7-NA
IGFIR negative	77	NA	79.8-NA

Figure6