

1 Exploring autism and autism co-occurring condition associations to elucidate
2 multivariate genetic mechanisms and insights

3 Karoliina Salenius^{1*}, Niina Väljä^{1*}, Sini Thusberg¹, Francois Iris³, Christine Ladd-Acosta⁴,
4 Christophe Roos⁵, Matti Nykter^{1,6}, Alessio Fasano^{7,8}, Reija Autio^{9*}, Jake Lin^{9,10+*}, on behalf of
5 the GEMMA study²

6 *Equal contributions; ⁺Corresponding author

7 Affiliations

- 8 1. Faculty of Medicine and Health Technology, Tampere University and Tays Cancer Centre, Tampere, Finland
- 9 2. The GEMMA study, GEMMA-PROJECT.eu, Salerno, Italy
- 10 3. BMSystems, Paris, France
- 11 4. Department of Epidemiology, Johns Hopkins Bloomberg School of Public Health, Baltimore, USA
- 12 5. Eufomatics, Tekniikantie, Espoo, Finland
- 13 6. Foundation for the Finnish Cancer Institute, Helsinki, Finland
- 14 7. European Biomedical Research Institute of Salerno (EBRIS), Salerno, Italy
- 15 8. Harvard Medical School, Harvard T.H. Chan School of Public Health, Boston, USA
- 16 9. Health Sciences, Faculty of Social Sciences, Tampere University, Tampere, Finland
- 17 10. Department of Medical Epidemiology and Biostatistics, Karolinska Institute, Stockholm, Sweden

18 **Abstract:**

19 **Background:** Autism is a partially heritable neurodevelopmental condition, and people with
20 autism may also have other co-occurring conditions such as ADHD, anxiety disorders,
21 depression, mental health issues, learning difficulty, physical health conditions and
22 communication challenges. The concomitant development of autism and other neurological
23 conditions is assumed to result from a complex interplay between genetics and the environment.
24 However, only a limited number of studies have performed analysis on multivariate genetic
25 autism associations.

26 **Methods:** We conducted to-date the largest multivariate GWAS on autism and 8 autism co-
27 occurring condition traits (ADHD, ADHD childhood, anxiety stress, bipolar, disruptive
28 behaviour, educational attainment, major depression, and schizophrenia) using summary
29 statistics from leading studies. Multivariate associations and central traits were further identified.
30 Subsequently, colocalization and Mendelian randomization (MR) analysis were performed on

31 the associations identified with the central traits containing autism. To further validate our
32 findings, pathway and quantified trait loci (QTL) resources as well as independent datasets
33 consisting of 92 (30 probands) whole genome sequence data from the GEMMA project were
34 utilized.

35 **Results:** Multivariate GWAS resulted in 637 significant associations ($p < 5e-8$), among which
36 322 are reported for the first time for any trait. 37 SNPs were identified to contain autism and
37 one or more traits in their central trait set, including variants mapped to known SFARI autism
38 genes MAPT and NEGR1 as well as novel ASD genes KANSL1, NSF and NTM, associated
39 with immune response, synaptic transmission, and neurite growth respectively. Mendelian
40 randomization analyses found that all 8 co-occurring conditions are associated with autism while
41 colocalization provided strong evidence of shared genetic aetiology between autism and
42 education attainment, schizophrenia and bipolar traits. Allele proportions differences between
43 MAPT (17q21.31) region aberrations and MAPT H1/H2 haplotypes, known to associate with
44 neurodevelopment were found between GEMMA autism probands and controls. Pathway, QTL
45 and cell type enrichment implicated microbiome, enteric inflammation, and central nervous
46 system enrichments.

47 **Conclusions:** Our study, combining multivariate genome-wide association testing with
48 systematic decomposition identified novel genetic associations related to autism and autism co-
49 occurring driver traits. Statistical tests were applied to discern evidence for shared and
50 interpretable liability between autism and co-occurring traits. These findings expand upon the
51 current understanding of the complex genetics regulating autism and reveal insights of neuronal
52 brain disruptions potentially driving development and manifestation.

53 **Highlights:**

- 54 • Multivariate GWAS resulted in 637 significant ASD associations ($p < 5e-8$), among
55 which 322 are reported for the first time.
- 56 • The novel associations mapped to known SFARI autism genes MAPT and NEGR1 and
57 novel ASD markers KANSL1, NSF and NTM markers, associated with immune
58 response, synaptic transmission, and neurite growth, potentially driving the gut brain-
59 barrier hypothesis driving ASD.

- 60 • Mendelian randomization analyses found that the co-occurring traits ADHD, ADHD
61 childhood, anxiety stress, bipolar, disruptive behaviour, educational attainment, major
62 depression, and schizophrenia are strongly associated with autism.

63 **Keywords:** Autism biomarkers, Multivariate GWAS, Mendelian randomization, GEMMA

64 Introduction

65 Autism spectrum disorders (autism) is an umbrella term for a group of heterogeneous
66 neurodevelopmental conditions that manifest in early childhood. Autism is associated with
67 polygenic markers and with several key factors such as family history, genetics and environment
68 (Khachadourian et al. 2023; Nayar et al. 2021; Chaste and Leboyer 2012). The diagnosis of
69 autism is based on its key characteristics including difficulties in social communication and
70 interaction, restricted and repetitive behaviors, hyperactivity and divergent responses to sensory
71 inputs. The most common co-occurring conditions in autistic persons are attention deficit
72 hyperactivity disorder (ADHD), ADHD childhood, anxiety, bipolar (BP), depression, epilepsy,
73 obsessive compulsive disorders (OCD) and stress related conditions, all of which share
74 overlapping diagnostic attributes and challenging symptoms with autism (Khachadourian et al.
75 2023; Romero et al. 2016). According to US data, autistic children tend to fare less well in
76 educational attainment (EA) and about one in three have a reduced intellectual ability, as defined
77 by intelligence quotient (IQ less than 70) (Baio et al. 2018; Tamm et al. 2020). Some children
78 with autism having higher IQ scores also comparatively experience harder academic struggles
79 due to co-occurring conditions and difficulties in social interactions (Ashburner, Ziviani, and
80 Rodger 2010).

81
82 Together with recent advances in genomics technology and pivotal support from the engaged
83 autism community, 1,162 genes are currently implicated with autism development and these are
84 curated in the SFARI (Arpi and Simpson 2022; Grove et al. 2019; Pinto et al. 2014) gene
85 module. These genes, with varying degrees of effect, are scored using the Evaluation of Autism
86 Gene Link Evidence (EAGLE) framework (Schaaf et al. 2020). Surprisingly, while it is known
87 that common variants contribute to the majority of genetic background (Gaugler et al. 2014),
88 only a few robust genetic associations have been recently reported. Most of these are attributed
89 to the landmark study conducted by Grove and colleagues, employing a large Danish cohort with

90 18,381 autism cases and 27,969 controls, where 12 significant variant associations were reported
91 (Grove et al. 2019).

92
93 Given that there is overlap in symptoms between autism and ADHD, a genetics study recently
94 found shared genetic factors underlying autism and ADHD (Peyre et al. 2021), with partial
95 concordance between bidirectional colocalization single nucleotide variants (SNPs). However,
96 the study was limited to general ADHD (onset age 10+), and not childhood ADHD.

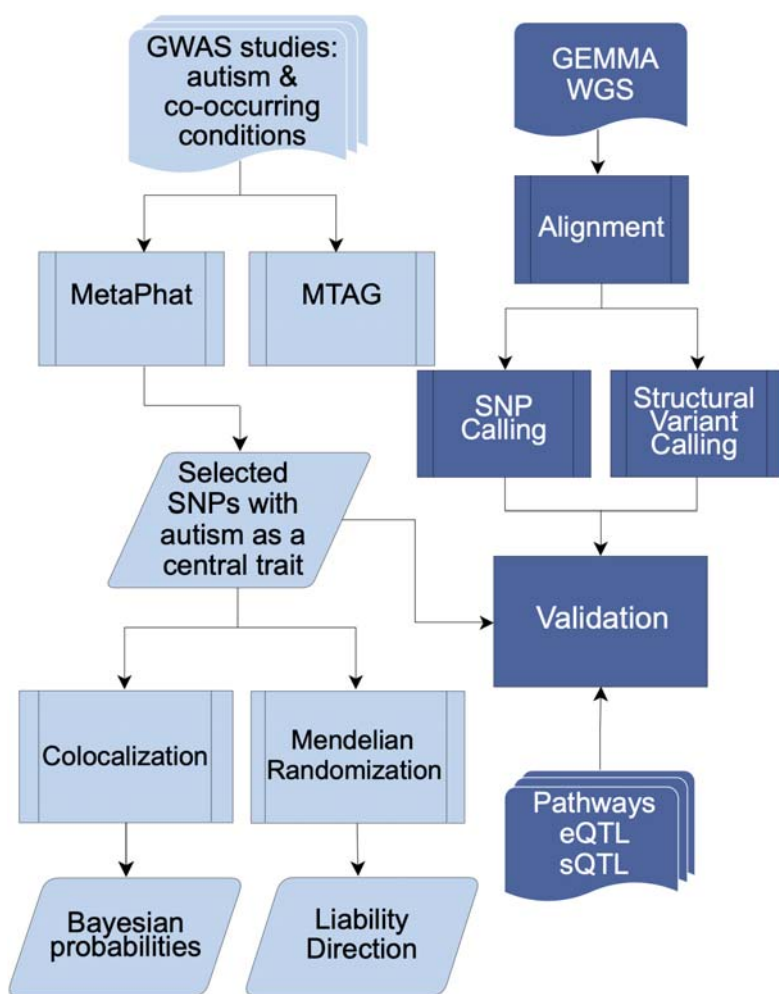
97 Astoundingly many (47% median) autistic children have reported one or more gastrointestinal
98 (GI) symptoms (Holingue et al. 2018; Boorstein 2008). Recently, there have been promising
99 results that link microbiome disruption and diversity (Morton et al. 2023) as a novel contributing
100 factor to autism. Interestingly, while Grove and colleagues found that 7 of the 12 autism SNP
101 associations have similar significance towards EA and psychosis traits depression and
102 schizophrenia (Grove et al. 2019), still very little is known concerning the joint and the shared
103 genetic mechanisms between autism and autism co-occurring traits including ADHD, ADHD
104 childhood, EA, depression and their potential links to gastrointestinal disruptions.

105 To attenuate on the genetic knowledge gaps in autism and expand the exploration of potential
106 shared co-occurring trait genetic associations, this study performed multivariate genome wide
107 association with summary statistics from autism and 12 co-occurring traits from large reputable
108 cohorts. To achieve this, colocalization (coloc) was systematically applied to test the robustness
109 between the shared variants and traits (Wallace 2021). Mendelian randomisation (MR) was
110 further applied, using the multivariate variants and the essential traits, to assess liability
111 relationships between autism and the selected co-occurring conditions (Bowden, Davey Smith,
112 and Burgess 2015; Rees, Wood, and Burgess 2017). This study seeks to clarify functional,
113 regulatory and tissue type differentiation with enrichment and integration of quantified trait loci
114 (QTL) integration while validating our key findings with independently sequenced genomes
115 from the GEMMA cohort (Troisi et al. 2020).

116 **Methods and Materials**

117 Genome-wide summary statistics for autism and ADHD were collected from the Psychiatric
118 Genomics Consortium (PGC) and iPSYCH (Pedersen et al. 2018; Sullivan et al. 2018) studies.
119 Education attainment (Okbay et al. 2022) summary file was collected from the Social Science

120 Genetic Association Consortium (SSGAC). Additional autism co-occurring traits, selected based
121 on LDSC genetic correlation with autism, include ADHD childhood, bipolar (BP), anxiety-stress
122 disorder (ASRD), disruptive behaviour (DBD), major depression (MDD) and schizophrenia
123 (SCZ), with sample sizes ranging from 31,890-765,283 are shown in Table 1 (additional details
124 in Supplementary Table 1). Summary statistics are joined, yielding 4,525,476 SNPs, and applied
125 in a multivariate GWAS setting. Follow-up analysis includes decomposition aiming to detect the
126 most important traits while colocalization and Mendelian randomisation analysis are conducted
127 to explore shared liability as shown in Figure 1.
128



129
130 *Figure 1: Workflow for the analyses conducted in the study. Multivariate GWAS was performed on selected GWAS*
131 *studies including autism and 8 co-occurring traits: ADHD, ADHD childhood, bipolar, anxiety, disruptive behaviour,*
132 *educational attainment, major depression and schizophrenia. 37 SNPs were selected and evaluated with*
133 *Colocalization and Mendelian Randomization. Further validation of these SNPs utilized pathway and EBI*

134 eQTL/sQTL catalogs as well as the GEMMA -study. The GEMMA whole genome sequencing (WGS) processing
135 included variant calling to infer structural and single nucleotide variants (SVs and SNVs) present in the samples.

136

137 Multivariate GWAS and determination of central traits

138 Multivariate GWAS on autism and autism co-occurring biomarker traits were performed using
139 metaPhat/metaCCA software that performs multivariate analysis by implementing Canonical
140 Correlation Analysis (CCA) for a set of univariate GWAS summary statistics (Ruotsalainen et
141 al. 2021; Cichonska et al. 2016; Lin et al. 2020). The objective of metaCCA is to find the optimal
142 genetic effect combination that is maximally correlated with a linear combination of the trait
143 variables. Autism multivariate central traits are identified by MetaPhat decomposition based on
144 iterative tracing of p-values (p) from trait subsets (relative to 5×10^{-8}) and Bayesian Information
145 Criterion (BIC) (Schwarz 1978) representing model fit. The central traits are the union of the
146 driver biomarker traits together with the subset traits yielding the lowest BIC value. MTAG
147 (Turley et al. 2018), a high performant multivariate-GWAS that addresses sample overlap, is
148 additionally performed for validation.

149 Genetic annotations, pathway enrichment and validation

150 SFARI Base Gene resource, GeneCards and GWAS catalog were used to assess the novelty of
151 variants and genes associated with autism (Arpi and Simpson 2022; Safran et al. 2010;
152 MacArthur et al. 2017). snpXplorer was applied towards SNP annotation (Tesi et al. 2021).
153 Reactome and WikiPathway databases pathway enrichments were evaluated with the Enrichr
154 tool (Kuleshov et al. 2016). Human organ and cell type systems enrichment analysis,
155 encompassing 1,466 tissue-cell type and single-cell RNAseq panels, was conducted using
156 WebCSEA (Dai et al. 2022, Lake et al. 2018). eQTL and sQTL were assessed within the QTL
157 catalog, via FIVEx portal (Kwong et al. 2022).

158 Colocalization analyses

159 Colocalization was performed for the selected multivariate autism SNPs to assess if the
160 associated variants in the locus are shared genetically between autism and the 8 co-occurring
161 related autism traits to account for erroneous results that may follow from analyzing individual

162 SNPs. Errors can occur when a SNP associated with trait 1 and trait 2 are in linkage
163 disequilibrium (LD). The analyses were performed using the R package coloc (Giambartolomei
164 et al. 2014; Wallace 2020).

165
166 The colocalization analysis was conducted using the absolute base factor colocalization method
167 (coloc.abf), which is a Bayesian colocalization analysis method. A region size window of 100KB
168 (50±KB flanking the SNP position) was selected to comprehensively span potential LD and
169 regulatory elements (Piovesan et al. 2016). The different hypotheses tested include: H0 (no liable
170 variant), H1 (liable variant only for trait 1), H2 (liable variant only for trait 2), H3 (two separate
171 liable variants), H4 (common liable variant shared between the traits). As recommended
172 (Wallace 2020), default setting prior probability thresholds were applied: 1e-4 for H1, H2 and
173 H3 and 1e-5 for H4 while posterior probability ($H4 > 0.90$) is conservatively applied to estimate
174 shared liability.

175 Mendelian randomization analyses

176 Mendelian Randomization analyses (MR) was conducted on the selected autism multi-trait SNPs
177 based on their assigned central traits, to explore the liability, direction and independent (reverse
178 causation) relationships between autism and its related biomarkers (Phillips and Smith 1991).
179 Instrumental strengths, approximated with F1 score > 10 , were calculated using SNP effect and
180 standard error values (Bound, Jaeger, and Baker 1995; Palmer et al. 2012). The analyses were
181 performed using the R package MendelianRandomization (Bowden, Davey Smith, and Burgess
182 2015).

183 Whole genome sequencing

184 The results were validated using yet unpublished data from the EU Horizon2020 GEMMA
185 research project with genotype variant calls in 97 (30 proband) WGS samples from the GEMMA
186 prospective cohort (Troisi et al. 2020). 49 of these samples were sourced from 15 Italian
187 families, 19 samples from 6 US families and 25 samples from 7 Irish families. These samples,
188 assayed on whole blood and collected during enrollment, were sequenced with 30-40X coverage
189 on Illumina NovaSeq 6000 platform. Data was aligned to GRCh38 reference genome using bwa
190 mem v0.7.17 (Li 2013) and reads were sorted and duplicates marked with samtools v1.12 (Li et

191 al. 2009). Quality control was performed with omnomicsQ -software (Gutowska-Ding et al.
192 2020). For variant calling DeepVariant v1.4.0 (Poplin et al. 2018) was utilized and variants were
193 annotated with Variant Effect Predictor (McLaren et al. 2016) version 111.0.. Presence of the
194 H1H2 inversion was evaluated based on haplotype defining variant rs8070723 (Allen et al.
195 2014). Structural variants were called with Smoove v0.2.6, a wrapper for Lumpy v0.3.1. to
196 detect the 238bp deletion in MAPT gene intron 9 and to further validate the presence of the
197 900kb H1H2 inversion (Pittman, Fung, and de Silva 2006), which is not reliably detected from
198 short read sequencing.

199 Statistical analysis

200 All statistical analyses were performed using R 4.2.2 software and available as R markdown
201 results in the github project (https://github.com/jakelin212/mvasd_gwas). Genome-wide
202 association is called on the standard and strict p-value threshold of $5e-8$, to account for multiple
203 testing based on the assumption of about 1-million independent tests (Risch and Merikangas
204 1996). Bonferroni correction is applied for multiple testing.

205 Results

206 GWAS summary statistics

207 Genome-wide summary statistics for autism and ADHD were collected from the PGC and
208 iPSYCH (Pedersen et al. 2018; Sullivan et al. 2018) studies. Education attainment (Okbay et al.
209 2022) summary file was collected from the Social Science Genetic Association Consortium
210 (SSGAC). Altogether, using summary statistics, 12 autism co-occurring traits were assessed for
211 genetic correlation with the landmark autism study (Grove et al. 2019), the largest genetic
212 correlation values, as computed by LDSC (Bulik-Sullivan et al. 2015), were between autism and
213 ADHD (0.535), followed by MDD (0.505) and ADHD childhood (0.478). Shown in Table 1
214 below, 8 traits are shown to be genetically correlated with autism ($p < 0.05$) and additional
215 details of all traits are shown in Supplementary Table 1.

216

217 *Table 1.* Data of autism and 8 genetically correlated traits ($P < 0.05$, calculated from LDSC) are presented and
218 applied towards multivariate-GWAS to explore multivariate associations and additional trait refinement. More
219 details and excluded traits are listed in Supplementary Table 1.

Trait	Heritability (H2)	Genetic correlation	P	Genetic covariance	Intercept
Autism ¹	0.203 (0.015)	na	na	na	na
ADHD ²	0.094 (0.005)	0.535 (0.041)		1,44E-38	0.233 (0.009)
ADHD					
Childhood ³	0.235 (0.015)	0.478 (0.052)	5,21E-20	0.104 (0.012)	0.260 (0.007)
ASRD ⁴	0.211 (0.019)	0.441 (0.079)	2,22E-08	0.090 (0.015)	0.221 (0.006)
Bipolar ⁵	0.068 (0.003)	0.219 (0.041)	9,67E-08	0.026 (0.005)	0.032 (0.006)
DBD ⁶	0.1004 (0.012)	0.186 (0.07)	0,008	0.026 (0.010)	0.179 (0.006)
EA ⁷	0.321 (0.009)	0.207 (0.025)	9,95E-17	0.053 (0.007)	-0.005 (0.007)
MDD ⁸	0.026 (0.002)	0.505 (0.003)	2,78E-36	0.037 (0.003)	0.155 (0.005)
SCZ ⁹	0.395 (0.014)	0.258 (0.035)	7,87E-14	0.07 (0.01)	0.018 (0.007)

Abbreviations

ADHD=Attention Deficit Hyper Disorder; ASRD=Anxiety-Stress Disorder; DBD=Disruptive Behaviour Disorder; EA=Education attainment; MDD=Major Depression Disorder; SCZ=Schizophrenia

1. Grove et al. 2019 (PMID: 30804558)
2. iPSYCH+deCODE+PGC, Demontis et al. 2023 (PMID: 36702997)
3. iPSYCH, Rajagopal et al. 2022 (PMID: 35927488)
4. iPSYCH excluding autism cases Mai et al. 2019
5. Discovery excluding UKB Mullins et al. 2021 (PMID: 34002096)
6. Demontis et al. 2021 (PMID: 33495439)
7. Discovery cohorts excluding 23andme, Okbay et al. 2022 (PMID: 35361970)
8. PGC excluding UKB, Wray et al. 2018 (PMID: 29700475)
9. PGC Wave 3, Trutbetsky et al. 2022 (PMID: 35396580)

220

221 Multivariate autism central trait SNPs, pathway and organ tissue enrichment

222 Multivariate GWAS was performed with autism together with its genetically correlated traits,
223 ADHD, ADHD childhood, ASRD, bipolar, DBD, EA, MDD, and SCZ (Table 1) and 637 ($p <$
224 $5e-8$) SNP associations were found, including 322 variants that are reported for the first time for
225 any trait (Supplementary Table 6) according to GWAS catalog. Two associations (rs2388334
226 and rs1452075) intersected with the twelve associations identified in the landmark common
227 genetic variants of autism study (Grove et al. 2019). When assessed at the gene level, all 12 were
228 concordant (as indicated in STable 6). Decomposition implemented in MetaPhat, using stepwise
229 tracing of p-value and Bayesian information criteria (BIC) contributions (Lin et al. 2020;
230 Schwarz 1978), identified 37 autism central trait SNPs where 16 were identified with
231 multivariate GWAS approach (all relevant univariate SNPs $p > 5e-8$, listed in Supplementary
232 Table 2). These 37 multivariate autism SNPs, 17 of which had previously been reported in

233 existing GWAS studies, mapped to 35 genes (Table 2) and confirmed that 8/35 (ARHGAP32,
234 CADPS, CUL3, KANSL1, MACROD2, MAPT, MSRA and NEGR1) are known curated SFARI
235 genes, with autism susceptibility EAGLE scores ≤ 3 (indicating limited evidence) (Schaaf et
236 al. 2020). The variant rs538628 within the NSF gene, a regulator of AMPA receptor endocytosis
237 and critical for mediating glutamatergic synaptic transmission (Iwata et al. 2014), previously
238 only implicated in mice with autism-like behaviors (Xie et al. 2021) and MAPT are identified to
239 associate with the autism optimal central traits of autism, EA and SCZ (MAPT $p = 3.98e-31$,
240 NSF $p = 1.99e-27$, Supplementary Table 2, trace plots are provided in supplementary data).
241 Shown in the same table, MTAG (Turley et al. 2018) multivariate GWAS validation was
242 performed to address potential cohort sample overlaps and similar results were found (MAPT p
243 $= 1.99e-20$, NSF $p = 5.37e-18$).

244
245 Shown in Supplementary Table 7, Figure 2e and Supplementary Figure 3, pathway enrichment
246 using the 35 associated genes was performed with Enrichr (Kuleshov et al. 2016). Nervous
247 systems development (GO:0007399) was found to be the most significant ($p = 1.73e-08$) while
248 neural and microtubule structural related pathway hits from Reactome (Fabregat et al. 2018) and
249 WikiPathways (Nesterova et al. 2019) featured pathways were Inclusion Body Myositis (MAPT
250 and PSEN1, $p = 1.27e-04$) and COPII-mediated Vesicle Transport (NSF and SERPINA1, $p =$
251 $4.69e-03$) Additionally, human organ tissue system enrichment analysis was performed using
252 WebCSEA (Dai et al. 2022) found significance with the digestive, nervous, sensory, lymphatic
253 and respiratory organ systems (Figure 2f, $p < 1e-03$). As shown in Supplementary Figure 4, the
254 most enriched tissue types are related to cerebrum, cortex, intestine and blood related
255 components discerned from 1,355 tissue-type (TS) as well as data from the human brain single
256 cell project (Lake et al. 2018).

257
258 *Table 2: Multivariate GWAS autism-central SNPs tested with Coloc and MR tests towards the identified autism*
259 *central traits, with all 8 traits passing MR and 19 gene regions/traits pairings passed Coloc ($H_4 > 0.90$), indicated*
260 *with +. Coloc and MR details are additionally listed in Supplementary Tables 3 and 4. The order of the central traits*
261 *are determined by p-value importance during decomposition processing. Known GWAS associations (17/37) are*
262 *marked as * while SFARI autism gene members (8) are in bold.*

rsid	Gene (SFARI Score)	Chr:pos:ref>alt	SNP consequence	Central traits
rs6699841	NEGR1	1:72645850:A>G	intergenic	EA Autism
rs67980110	ENSG00000237435	1:96470851:T>C	regulatory	EA Autism ADHD

rs2391769*	NA	1:96978961:A>G	intergenic	Autism ADHD
rs58378462+	ENSG00000221849	2:104138639:A>G	intron	Autism EA+ ADHDCHILD ADHD
rs11897599	MRPS18BP2	2:140449566:A>G	downstream	EA Autism ADHD
rs78826721+	NDUFS1	2:207002314:A>G	intron	SCZ+ EA Autism
rs6748341*	CUL3	2:225377574:T>C	regulatory	Autism EA SCZ
rs1452075*	CADPS	3:62481063:T>C	intron	EA Autism
rs62243489+	CADPS	3:62482927:T>G	intron	EA+ Autism
rs6806355+	NA	3:70488292:T>G	intergenic	BP SCZ+ EA+ Autism
rs35544582+	SLC30A9	4:42044036:A>C	intron	EA+ Autism
rs67779882	NA	5:92488009:A>G	intron,non_coding	EA Autism ADHD
rs406413*	ENSG00000246316	5:113898581:T>C	intron	EA Autism
rs2388334*	ENSG00000271860	6:98591622:A>G	intron	BP EA Autism
rs6999466+*	MSRA	8:10265712:A>G	intron	MDD EA+ Autism
rs877116*	ENSG00000253695	8:10712945:T>G	intron	Autism ASRD
rs2409743*	ENSG00000270076	8:11070360:T>G	intron,non_coding	Autism ASRD
rs2409784+	BLK	8:11396856:A>C	intergenic	Autism ASRD+
rs11775333	NA	8:142637867:T>C	regulatory	EA Autism
rs11143599	ENSG00000221844	9:76101777:T>G	intron,non_coding	BP Autism
rs1848797+*	ENSG00000238280	10:64552934:A>G	intron	BP+ EA Autism
rs12761761*	BNIP3	10:133775375:T>C	downstream	EA Autism
rs2237943	SERGEF	11:17838248:T>C	regulatory	EA Autism ADHD
rs4609618	ARHGAP32	11:128818792:A>C	intergenic	Autism ADHD
rs568828+	NTM	11:131732259:T>G	intergenic	Autism SCZ+ ADHD+
rs177413+	PSEN1	14:73683194:T>C	intergenic	BP+ Autism EA SCZ
rs736281*	NA	14:94287830:T>C	intron	EA Autism
rs28929474*	SERPINA1	14:94844947:T>C	intron	EA Autism
rs62065453+*	ENSG00000131484	17:43573419:A>G	regulatory	Autism EA+ SCZ+
rs62057107+*	CRHR1	17:43896032:T>C	intergenic	Autism EA+ SCZ+
rs62061734+*	MAPT	17:44018488:T>C	intron	Autism EA+ SCZ
rs2696633+	KANSL1	17:44270059:T>G	intron	Autism EA+ SCZ
rs538628*	NSF	17:44787313:T>C	regulatory	Autism EA SCZ+
rs1792709*	ENSG00000206129	18:53768975:A>G	intron	Autism SCZ
rs6079546	MACROD2	20:14716738:T>G	intergenic	MDD EA Autism
rs6035835	XRN2	20:21271669:A>G	intergenic	Autism ADHDCHILD ADHD
rs9974470	ENSG00000249209	21:35012066:A>G	intron	EA Autism
rs9974470	ENSG00000249209	21:35012066:A>G	intron	EA Autism

264 Colocalization analyses

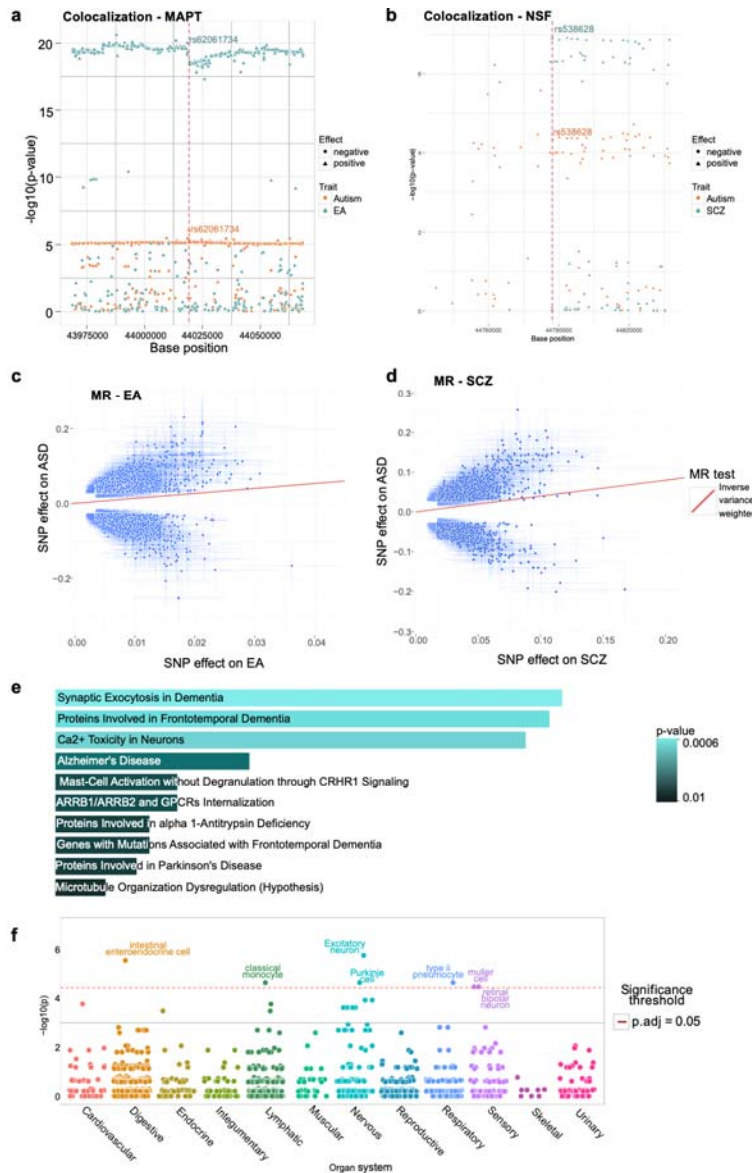
265 Colocalization analysis was conducted on the 37 multivariate SNP associations identified to
 266 contain autism as a central trait. The comparative analysis was performed on the relevant
 267 mapped gene window, from start to end while adding 25 KBs on both ends to cover regulating

268 and promoter regional elements. For the two SNPs that did not map to a gene, the window size
269 used for the colocalization analysis was 100 KB (50 +-KB), estimated and derived from the gene
270 median length of 24KB (Fuchs et al. 2014). Additional information concerning the number of
271 regional LD adjusted SNPs applied to the colocalization test is shown in Supplementary Table 3.
272 A total of 19/37 SNPs showed strong evidence for a common liability variant with autism ($H4 >$
273 0.9, details shown in Supplementary Table 3) and the traits having common autism liable
274 variants included EA (9), SCZ (6), BP (2), ADHD (1) and ASRD (1). Notably, SNP rs62061734,
275 mapping to the MAPT gene and rs538628, mapping to the NSF gene had $H4$ of 99% for EA and
276 SCZ, respectively (shown in Figure 2a-b) while SNP rs568828, mapping to the NTM gene had
277 $H4$ of 99% for SCZ and ADHD (Supplementary Table 2).

278 Mendelian randomization analyses

279 Mendelian randomization analysis was conducted for the 8 central traits genetically correlated
280 with autism. The lead SNPs, with $F1$ scores > 25 (listed in Supplementary Table 4, where > 10 is
281 considered strong (Palmer et al. 2012)) were found to lend significantly increase probability of
282 autism ($p < 0.001$ both IVW and MR-Egger (EA and SCZ are shown in Figure 2c-d), accounting
283 for horizontal pleiotropy and multiple testing with Bonferroni correction of 8 traits), after
284 checking for directionality with MR Steiger testing.

285



286
 287 *Figure 2: Results from the post GWAS analysis of the 37 selected SNPs. a,b)* Colocalization processing using the
 288 original summary statistics of autism and EA for (a) rs62061734 (MAPT, failed colocalization with H4 probability
 289 8.19%, $p = 0.09$), autism and NSF for (b) rs538628 (NSF, SCZ passed colocalization with H4 probability 0.94%, p
 290 $= 1.1e-05$), depicting supporting regional SNPs (x-axis) and their negative log10 p-value (y-axis) and effect
 291 direction (circles negative, triangles positive). **c,d)** Mendelian randomization (MR) results using inverse variance
 292 weighted (IVW) -method for association of autism SNP effects (y-axis) and c) EA and d) SCZ effects (x-axis). **e)**
 293 Pathway analysis for the genes associated with the selected SNPs show enrichment in processes related to neurons
 294 using Reactome database. The length of the bar represents the significance of that specific gene-set or pathway and
 295 the color indicates the significance of the pathway. Details of the pathways and genes with their associated p-values
 296 are listed in Supplementary Table 8. **f)** Organ system enrichment was applied using WebCSEA, using the selected
 297 37 multivariate gene associations and found enrichment ($p < 1e-03$) with the autism relevant digestive, nervous and
 298 sensory organ systems as well as lymphatic and respiratory systems.

299

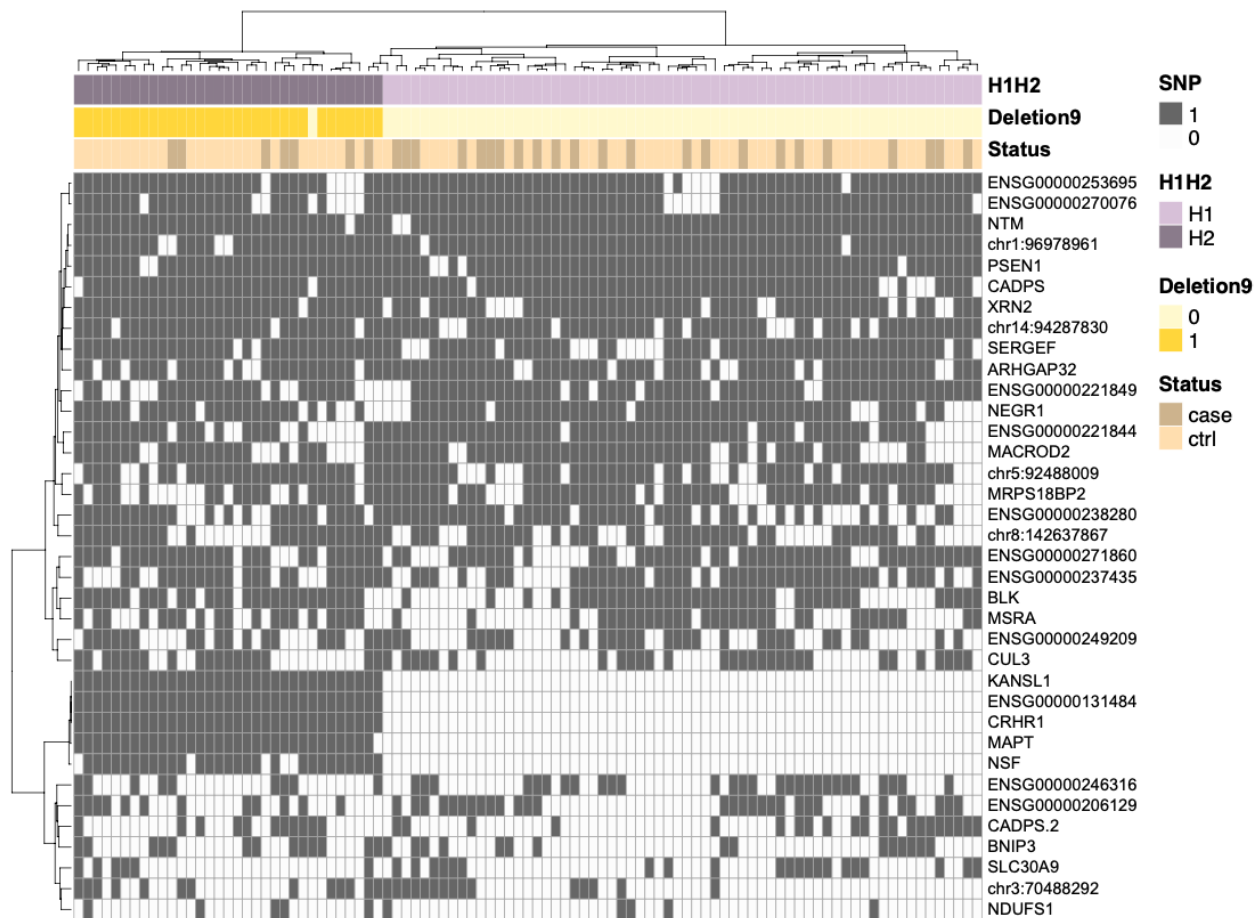
300 Validation

301 The associations of MAPT and NSF genes are among the affected autism hits in the concordant
302 SNPs. To assess the impact of the reported multivariate associations on expression (eQTL) and
303 splicing regulatory quantitative trait loci across tissues, the majority (22/37 eQTL, 24/37 sQTL,
304 details listed in Supplementary Table 9) of the associations found are cited in the EBI QTL
305 Catalog (Kerimov et al. 2021) where they associate (adjusted $p < .05$) with adipose, brain and
306 neuron tissues. Furthermore, filtering on GeneCards (Safran et al. 2010) curations, the presented
307 autism central genes are enriched with systems related to gut, microbiome, intestinal immune,
308 enteric nervous and central nervous systems (Supplementary Table 5).

309

310 Additionally, the distribution of these autism-central trait related SNPs in 97 (30 autism proband)
311 family based GEMMA (Troisi et al. 2020) samples was investigated. Visualized in Figure 3,
312 distinct clustering and proportional differences between the 30 proband and 67 controls were
313 found with respect to the neurological developmental genes MAPT and NSF were found. MAPT
314 SNP was present in 7/30 (23%) probands compared to 25/67 (37%) controls while for NSF was
315 enriched in 24/67 of the controls as compared to 4/30 (13%) probands. Shown in Supplementary
316 Table 8, the phi coefficients for MAPT, NSF and KANSL SNPs between probands and controls
317 were > 0.2 , indicating strong correlations. Separated by approximately 770K bases apart, these
318 two genes are both found in the 17q21.31 arm and referred to as the MAPT H1/H2 haplotypes
319 (Supplementary Table 8). This haplotype, associated with the Tau microtubule-associated
320 protein, has been previously implicated in Parkinson's disease and neurological development
321 disorders (Wang and Mandelkow 2016; Wider et al. 2010). After overlaying the autism
322 multivariate-GWAS variants in the context of the Grove et al. (Grove et al. 2019) study as a
323 Manhattan plot (Supplementary Figure 5), capturing KANSL1, MAPT and NSF, the reported
324 MAPT and NSF autism linked SNPs were found to be enriched with the MAPT H2 haplotype
325 (shown in Figure 3), as well as a deletion event located in intron 9 of MAPT, thus impacting
326 MAPT alternate splicing and potentially reduction aggregation of Tau (Corsi et al. 2022).

327



328

329 *Figure 3: Results from the validation with GEMMA -cohort. Heatmap shows the clustering of the selected SNPs in*
330 *the cohort, with rows showing the genes associated to each SNP and samples shown in columns. Samples with*
331 *structural variation in chr17q21.31 can be seen to cluster together on the left. Darker yellow annotation highlights*
332 *the samples with the 238bp deletion located in intron 9 of MAPT -gene, also associated with the H2 haplotype.*
333 *Assessment of the H1/H2 haplotype for MAPT was evaluated using SNP rs8070723. H1 haplotype has been shown*
334 *to increase risk of other neurological disorders such as Alzheimer and Parkinson's Disease, and as seen in the*
335 *GEMMA cohort, autism probands tend to express the H1 haplotype in lighter purple (23 out of 30).*

336 Discussion

337 Using multivariate statistical learning approaches, this study constitutes the largest and most
338 comprehensive genetically correlated multi-trait GWAS analysis with summary statistics
339 performed on autism and its genetically correlated traits; ADHD, ADHD childhood, ASRD,
340 bipolar, DBD, EA, MDD, and SCZ to explore the underpinnings driving the complexities in
341 autism. 37 associations containing autism as a central trait were discovered, with 16 of these
342 associations were detected only due to the increased statistical power of this multivariate GWAS
343 analysis (lowest univariate p-value all traits > 5e-08, and 12/16 confirmed with the MTAG tool
344 (Turley et al. 2018), Supplementary Table 2). Enrichment analysis confirmed that the

345 multivariate autism association results are related to neuron and gut tissues and developmental
346 pathways as well as inflammation and microbiome domains, further underscoring the
347 intersection of genome and microbiome as well as supportive of the gut-brain axis hypothesis
348 associated to autism (Morton et al. 2023; Cheng et al. 2023). The genetic associations pertaining
349 to MAPT, NSF and NTM are known markers to microtubule dysregulation and cytoskeleton
350 pathways (Supplementary Table 7) and add additional support to the canon of impairments in the
351 regulation of the brain-barrier and gut permeability underpinning autism development
352 (Fiorentino et al. 2016). Using the multivariate autism central trait gene sets, based on
353 comprehensive human tissue cell type and single cell data (Dai et al. 2022, Lake et al. 2018)
354 analysis, enrichments were detected with digestive, nervous, and sensory organ systems (Figure
355 2f). At the tissue cell type level and further supporting the gut-brain axis and blood brain barrier,
356 the analysis detected enriched autism relevant signals related to brain, adipose and gut
357 eQTL/sQTL (Supplementary Table 9) tissue panels.

358 Overall, the identified autism biomarkers passed MR with strong F1 measures and significantly
359 contributed to improve the construction of meta psychiatric based autism polygenic scores
360 (Jansen et al. 2020), shown to improve prediction relative to standard PRS in other complex
361 conditions such as coronary heart disease and type 2 diabetes (Lin et al. 2023; Tamlander et al.
362 2022). These multivariate autism annotations are mapped to genes including MAPT and NSF
363 that are known members of biological pathways driving neural disorders such as infantile
364 epilepsy (Suzuki et al. 2019) and Parkinson's Disease (Brion, Octave, and Couck 1994;
365 Derkinderen et al. 2021). Interestingly, colocalization tests for the MAPT region indicated shared
366 genetic risk between only EA and autism ($H4$ 0.99), while that for the NSF gene did not
367 associate with EA, instead associated with SCZ ($H4$ 0.94), suggesting intra region heterogeneity
368 that demands future investigation. A MAPT association (rs17649553) has recently been cited as
369 a strong ($p = 4.86 \times 10^{-37}$) association with protective effect towards Parkinson's Disease (Nalls
370 et al. 2014) as well as liable eQTL towards autism (Dominguez-Alonso, Carracedo, and
371 Rodriguez-Fontenla 2023). With respect to autism, the KANSL1, BNIP3, CADPS and NEGR1
372 genes have been implicated with immune and microbiome features (Cheng et al. 2023) and
373 behavioral developments (Singh et al. 2019).

374 The most common traits in our set of 37 associations that passed colocalization with autism were
375 EA (9), SCZ (6) and BP (2). It is known that the diagnosis for autism and ADHD, particularly

376 ADHD manifestation in young children, is similar with symptomatic issues concerning
377 hyperactivity and attention span (Kern et al. 2015). While a previous study has performed
378 comparison of genetic and functional enrichment of associations between autism and ADHD
379 (Peyre et al. 2021) GWAS resources, this study further complements their results by inclusion of
380 other autism co-occurring traits, including ADHD and ADHD childhood as well as EA.
381 Interestingly, autism and ADHD have both been linked with dysbiosis disruption in microbiome
382 composition and function, gastrointestinal and bowel habits issues (Morton et al. 2023).
383 As part of validation, clustering and distribution proportion differences based on the autism
384 identified SNP associations were detected between probands and non-autistic subjects on
385 genomes from the GEMMA cohort (Troisi et al. 2020). The MAPT haplotype region (17q21.31)
386 has been linked with neurological disorder development and general cognitive functions
387 (Trampush et al. 2017), here intron 9 deletion associated to structural aberration event was highly
388 depleted in autism probands (23%, 7/30). Deletion and its associated inversion event are known
389 to disrupt alternate splicing and decrease the aggregation of tau, which would lead to instability
390 and structural impairment in the brain neuronal cells (Avila et al. 2004). Our validation results
391 are limited by the relatively small sample size (97) currently available in GEMMA.
392 Nevertheless, the independent and deep sequencing data has allowed the harvesting of interesting
393 observations concerning distribution autism-central trait associations in probands as compared to
394 familial controls. The future release of other omics data types from autism cohorts and
395 foundation, including additional microbiome, metabolome and methylation measurements, will
396 allow for improved statistical power with deeper temporal analysis towards confirmation of gut-
397 brain-axis changes and genetic patterns driving autism heterogeneity and development.

398 Conclusion

399 Our study represents the largest autism multi-trait GWAS, analysis conducted to date, combining
400 autism and 8 related trait genome-wide association summaries and performed systematic
401 decomposition to identify novel genetic associations related to autism and autism co-occurring
402 driver traits. Upon analysis with colocalization and Mendelian randomisation, EA, SCZ, BP and
403 ADHD associations were found to share genetic risks with autism and potentially liable,
404 signaling enrichment of potentially liable patterns within brain tissues and cell types implicated
405 with neurodevelopment and the gut-brain axis hypothesis.

406

407 Acknowledgements

408 The work was supported by the European Commission Horizon 2020 programme (grant no.
409 825033). We are sincerely grateful to the entire GEMMA team and in particular to the families
410 participating in the project.

411 Conflicts of Interest

412 The authors have no conflicts of interests.

413

414 Author contributions

415 JL, KS, CLA, CR, MN and RA designed the study. NV, KS, ST, RA and JL performed the data
416 analysis and integration. KS, NV, ST, FI, RA and JL conducted the validation and figure
417 generation. KS, NV, AF, CR, RA and JL wrote the paper. All authors contributed to critical
418 revisions and approved the final manuscript.

419

420

421 **Figure Legends:**

422

423 **Figure 1:** Workflow for the analyses conducted in the study. Multivariate GWAS was performed
424 on selected GWAS studies including autism and 8 co-occurring traits: ADHD, ADHD childhood,
425 bipolar, anxiety, disruptive behaviour, educational attainment, major depression and
426 schizophrenia. 37 SNPs were selected and evaluated with Colocalization and Mendelian
427 Randomization. Further validation of these SNPs utilized pathway and EBI eQTL/sQTL catalogs
428 as well as the GEMMA -study. The GEMMA whole genome sequencing (WGS) processing
429 included variant calling to infer structural and single nucleotide variants (SVs and SNVs) present
430 in the samples.

431 **Figure 2:** Results from the post GWAS analysis of the 37 selected SNPs. **a,b)** Colocalization
432 processing using the original summary statistics of autism and EA for (a) rs62061734 (MAPT,
433 failed colocalization with H4 probability 8.19%, $p = 0.09$), autism and NSF for (b) rs538628
434 (NSF, SCZ passed colocalization with H4 probability 0.94%, $p = 1.1e-05$), depicting supporting
435 regional SNPs (x-axis) and their negative log₁₀ p-value (y-axis) and effect direction (circles

436 negative, triangles positive). **c,d**) Mendelian randomization (MR) results using inverse variance
437 weighted (IVW) -method for association of autism SNP effects (y-axis) and c) EA and d) SCZ
438 effects (x-axis). **e**) Pathway analysis for the genes associated with the selected SNPs show
439 enrichment in processes related to neurons using Reactome database. The length of the bar
440 represents the significance of that specific gene-set or pathway and the color indicates the
441 significance of the pathway. Details of the pathways and genes with their associated p-values are
442 listed in Supplementary Table 8. **f**) Organ system enrichment was applied using WebCSEA,
443 using the selected 37 multivariate gene associations and found enrichment ($p < 1e-03$) with the
444 autism relevant digestive, nervous and sensory organ systems as well as lymphatic and
445 respiratory systems

446
447 **Figure 3:** Results from the validation with GEMMA -cohort. Heatmap shows the clustering of
448 the selected SNPs in the cohort, with rows showing the genes associated to each SNP and
449 samples shown in columns. Samples with structural variation in chr17q21.31 can be seen to
450 cluster together on the left. Darker yellow annotation highlights the samples with the 238bp
451 deletion located in intron 9 of MAPT -gene, also associated with the H2 haplotype. Assessment
452 of the H1/H2 haplotype for MAPT was evaluated using SNPs rs1052553 and rs8070723. H1
453 haplotype has been shown to increase risk of other neurological disorders such as Alzheimer and
454 Parkinson's Disease, and as seen in the GEMMA cohort, autism probands tend to express the H1
455 haplotype in lighter purple (23 out of 30).

456
457 **Supplementary Figure Legends:**

458
459 **Supplementary Figure 1:** Genetic correlation of the traits included in the analysis.
460 ASD=Autism Spectrum Disorder; ADHD=Attention Deficit Hyper Disorder; ASRD=Anxiety-
461 Stress Disorder; DBD=Disruptive Behaviour Disorder; EA=Education attainment; MDD=Major
462 Depression Disorder; SCZ=Schizophrenia.

463
464 **Supplementary Figure 2:** P-value and BIC decomposition processing of MAPT and NSF to
465 identify autism central traits. ASD=Autism Spectrum Disorder; ADHD=Attention Deficit Hyper

466 Disorder; ASRD=Anxiety-Stress Disorder; DBD=Disruptive Behaviour Disorder;
467 EA=Education attainment; MDD=Major Depression Disorder; SCZ=Schizophrenia.

468
469 **Supplementary Figure 3:** Pathway analysis using the WikiPathway database also highlights
470 neuronal processes, with bar length and color indicating significance. More details listed in
471 Supplementary Table 8.

472
473 **Supplementary Figure 4:** Tissue and cell (TS) type enrichment using WebCSEA and the list of
474 the 22 central trait genes found that the most enriched tissues are related to cerebrum, cortex and
475 small intestine related tissue types. Lake 2017 refers to data from human brain single cell
476 analysis project (<https://pubmed.ncbi.nlm.nih.gov/29227469/>) while HCA stands for histologic
477 chorioamnionitis, an intrauterine inflammatory condition.

478
479 **Supplementary Figure 5:** Autism multivariate GWAS associations within the MAPT H1/H2
480 haplotype, 17q21 arm region, are presented in a Manhattan plot, in the context of Grove et al.
481 GWAS results. Significance thresholds for p-values of 1e-05 indicated in blue and 1e-08 in red.
482 Significant SNPs highlighted in green show rs62061734 (MAPT), rs269633 (KANSL1) and
483 rs538628 (NSF).

484
485
486 **Supplementary Tables**
487 Supplementary Table 1: Data and sample details of autism and 8 genetically correlated traits ($P <$
488 0.05, calculated from LDSC) are presented and applied towards multivariate-GWAS. Data from
489 four excluded traits are additionally shown.

490
491 Supplementary Table 2: 37 multivariate associations are identified with autism as a central trait
492 where 17/37, shown with asterisk are previously reported in the GWAS Catalog and in bold, 8
493 genes are identified as SFARI autism genes.

494
495 SupplementaRY Table 3: 19 gene regions/trait pairings passed coloc (Posterior Prob $H_4 > 0.9$,
496 Shown in bold,) called on coloc.abf with a window size of ± 50 kb flanking the SNP locus

497

498 Supplementary Table 4:(A) Mendelian randomization (MR) results for autism as outcome and
499 related traits. (B) MR where autism is the exposure and related traits are the outcome.

500

501 Supplementary Table 5: MV associated genes are found in systems curated/implicated with gut
502 microbiome and neural systems from GeneCards.

503

504 Supplementary Table 6: List of 637 Significant SNPs ($p < 5e-8$), with 315 already reported in the
505 GWAS catalog, identified by MetaPhat multivariate-GWAS using autism and 8 genetically
506 correlated trait summary statistics.

507

508 Supplementary Table 7: A) 108 enriched ($p < 0.05$) Go terms are annotated and (B) 46 pathways
509 on WikiPathway C) KEGG D) Reactome resources e) Tissue from the list of multivariate autism
510 SNPs found enrichments in neuron and nervous systems related data.

511

512 Supplementary Table 8: Autism central SNP alleles are mapped to GEMMA genotypes called
513 from WGS.

514

515 Supplementary Table 9: eQTL and sQTL related results of the autism central associations
516 relative to brain and nervous systems from EBI QTL catalog are captured via
517 <https://fivex.sph.umich.edu/>. Study URLs are listed at the bottom of the table.

518 References:

- 519 Allen, M., M. Kachadoorian, Z. Quicksall, F. Zou, H. S. Chai, C. Younkin, J. E. Crook, et al. 2014.
520 “Association of MAPT Haplotypes with Alzheimer’s Disease Risk and MAPT Brain Gene
521 Expression Levels.” *Alzheimer’s Research & Therapy* 6 (4). <https://doi.org/10.1186/alzrt268>.
522 Arpi, Magdalena Navarro Torres, and T. Ian Simpson. 2022. “SFARI Genes and Where to Find Them;
523 Modelling Autism Spectrum Disorder Specific Gene Expression Dysregulation with RNA-Seq
524 Data.” *Scientific Reports* 12 (1): 10158.
525 Ashburner, Jill, Jenny Ziviani, and Sylvia Rodger. 2010. “Surviving in the Mainstream: Capacity of
526 Children with Autism Spectrum Disorders to Perform Academically and Regulate Their Emotions
527 and Behavior at School.” *Research in Autism Spectrum Disorders* 4 (1): 18–27.
528 Avila, Jesus, Jose J. Lucas, Mar Perez, and Felix Hernandez. 2004. “Role of Tau Protein in Both
529 Physiological and Pathological Conditions.” *Physiological Reviews* 84 (2): 361–84.
530 Baio, Jon, Lisa Wiggins, Deborah L. Christensen, Matthew J. Maenner, Julie Daniels, Zachary Warren,

- 531 Margaret Kurzius-Spencer, et al. 2018. “Prevalence of Autism Spectrum Disorder Among Children
532 Aged 8 Years - Autism and Developmental Disabilities Monitoring Network, 11 Sites, United States,
533 2014.” *Morbidity and Mortality Weekly Report. Surveillance Summaries* 67 (6): 1–23.
- 534 Boorstein, Hilary Corinne. 2008. *Gastrointestinal and Feeding Problems in Young Children: A
535 Comparison Between Autism Spectrum Disorders and Other Developmental Delays*. University of
536 Connecticut.
- 537 Bound, John, David A. Jaeger, and Regina M. Baker. 1995. “Problems with Instrumental Variables
538 Estimation When the Correlation between the Instruments and the Endogenous Explanatory Variable
539 Is Weak.” *Journal of the American Statistical Association* 90 (430): 443–50.
- 540 Bowden, Jack, George Davey Smith, and Stephen Burgess. 2015. “Mendelian Randomization with
541 Invalid Instruments: Effect Estimation and Bias Detection through Egger Regression.” *International
542 Journal of Epidemiology* 44 (2): 512–25.
- 543 Brion, J. P., J. N. O’Connell, and A. M. Couck. 1994. “Distribution of the Phosphorylated Microtubule-
544 Associated Protein Tau in Developing Cortical Neurons.” *Neuroscience* 63 (3): 895–909.
- 545 Bulik-Sullivan, Brendan K., Po-Ru Loh, Hilary K. Finucane, Stephan Ripke, Jian Yang, Schizophrenia
546 Working Group of the Psychiatric Genomics Consortium, Nick Patterson, Mark J. Daly, Alkes L.
547 Price, and Benjamin M. Neale. 2015. “LD Score Regression Distinguishes Confounding from
548 Polygenicity in Genome-Wide Association Studies.” *Nature Genetics* 47 (3): 291–95.
- 549 Chaste, Pauline, and Marion Leboyer. 2012. “Autism Risk Factors: Genes, Environment, and Gene-
550 Environment Interactions.” *Dialogues in Clinical Neuroscience* 14 (3): 281–92.
- 551 Cheng, Lingsha, Haoqian Wu, Zhuo Chen, Haiping Hao, and Xiao Zheng. 2023. “Gut Microbiome at the
552 Crossroad of Genetic Variants and Behavior Disorders.” *Gut Microbes* 15 (1): 2201156.
- 553 Cichonska, Anna, Juho Rousu, Pekka Marttinen, Antti J. Kangas, Pasi Soininen, Terho Lehtimäki, Olli T.
554 Raitakari, et al. 2016. “metaCCA: Summary Statistics-Based Multivariate Meta-Analysis of
555 Genome-Wide Association Studies Using Canonical Correlation Analysis.” *Bioinformatics* 32 (13):
556 1981–89.
- 557 Corsi, Andrea, Cristina Bombieri, Maria Teresa Valenti, and Maria Grazia Romanelli. 2022. “Tau
558 Isoforms: Gaining Insight into MAPT Alternative Splicing.” *International Journal of Molecular
559 Sciences* 23 (23). <https://doi.org/10.3390/ijms232315383>.
- 560 Derkinderen, Pascal, Malvyne Rolli-Derkinderen, Guillaume Chapelet, Michel Neunlist, and Wendy
561 Noble. 2021. “Tau in the Gut, Does It Really Matter?” *Journal of Neurochemistry* 158 (2): 94–104.
- 562 Dominguez-Alonso, S., A. Carracedo, and C. Rodriguez-Fontenla. 2023. “eQTL Colocalization Analysis
563 Highlights Novel Susceptibility Genes in Autism Spectrum Disorders (ASD).” *Translational
564 Psychiatry* 13 (1): 336.
- 565 Fabregat, Antonio, Steven Jupe, Lisa Matthews, Konstantinos Sidiropoulos, Marc Gillespie, Phani
566 Garapati, Robin Haw, et al. 2018. “The Reactome Pathway Knowledgebase.” *Nucleic Acids
567 Research* 46 (D1): D649–55.
- 568 Fiorentino, Maria, Anna Sapone, Stefania Senger, Stephanie S. Camhi, Sarah M. Kadzielski, Timothy M.
569 Buie, Deanna L. Kelly, Nicola Cascella, and Alessio Fasano. 2016. “Blood-Brain Barrier and
570 Intestinal Epithelial Barrier Alterations in Autism Spectrum Disorders.” *Molecular Autism* 7
571 (November): 49.
- 572 Fuchs, Gilad, Yoav Voichek, Sima Benjamin, Shlomit Gilad, Ido Amit, and Moshe Oren. 2014.
573 “4sUDRB-Seq: Measuring Genomewide Transcriptional Elongation Rates and Initiation Frequencies
574 within Cells.” *Genome Biology* 15 (5): R69.
- 575 Gaugler, Trent, Lambertus Klei, Stephan J. Sanders, Corneliu A. Bodea, Arthur P. Goldberg, Ann B. Lee,
576 Milind Mahajan, et al. 2014. “Most Genetic Risk for Autism Resides with Common Variation.”
577 *Nature Genetics* 46 (8): 881–85.
- 578 Giambartolomei, Claudia, Damjan Vukcevic, Eric E. Schadt, Lude Franke, Aroon D. Hingorani, Chris
579 Wallace, and Vincent Plagnol. 2014. “Bayesian Test for Colocalisation between Pairs of Genetic
580 Association Studies Using Summary Statistics.” *PLoS Genetics* 10 (5): e1004383.
- 581 Grove, Jakob, Stephan Ripke, Thomas D. Als, Manuel Mattheisen, Raymond K. Walters, Hyejung Won,

- 582 Jonatan Pallesen, et al. 2019. "Identification of Common Genetic Risk Variants for Autism Spectrum
583 Disorder." *Nature Genetics* 51 (3): 431–44.
- 584 Gutowska-Ding, Maria Weronika, Zandra C. Deans, Christophe Roos, Jukka Matilainen, Farrah Khawaja,
585 Kim Brügger, Jo Wook Ahn, Christopher Boustred, and Simon J. Patton. 2020. "One Byte at a Time:
586 Evidencing the Quality of Clinical Service next-Generation Sequencing for Germline and Somatic
587 Variants." *European Journal of Human Genetics: EJHG* 28 (2): 202–12.
- 588 Hologue, Calliope, Carol Newill, Li-Ching Lee, Pankaj J. Pasricha, and M. Daniele Fallin. 2018.
589 "Gastrointestinal Symptoms in Autism Spectrum Disorder: A Review of the Literature on
590 Ascertainment and Prevalence." *Autism Research: Official Journal of the International Society for
591 Autism Research* 11 (1): 24–36.
- 592 Iwata, Keiko, Hideo Matsuzaki, Taro Tachibana, Koji Ohno, Saori Yoshimura, Hironori Takamura,
593 Kohei Yamada, et al. 2014. "N-Ethylmaleimide-Sensitive Factor Interacts with the Serotonin
594 Transporter and Modulates Its Trafficking: Implications for Pathophysiology in Autism." *Molecular
595 Autism* 5 (May): 33.
- 596 Jansen, Arija G., Gwen C. Dieleman, Philip R. Jansen, Frank C. Verhulst, Danielle Posthuma, and Tinca
597 J. C. Polderman. 2020. "Psychiatric Polygenic Risk Scores as Predictor for Attention
598 Deficit/Hyperactivity Disorder and Autism Spectrum Disorder in a Clinical Child and Adolescent
599 Sample." *Behavior Genetics* 50 (4): 203–12.
- 600 Kerimov, Nurlan, James D. Hayhurst, Kateryna Peikova, Jonathan R. Manning, Peter Walter, Liis
601 Kolberg, Marija Samoviča, et al. 2021. "eQTL Catalogue: A Compendium of Uniformly Processed
602 Human Gene Expression and Splicing QTLs." *bioRxiv*. <https://doi.org/10.1101/2020.01.29.924266>.
- 603 Kern, Janet K., David A. Geier, Lisa K. Sykes, Mark R. Geier, and Richard C. Deth. 2015. "Are ASD and
604 ADHD a Continuum? A Comparison of Pathophysiological Similarities Between the Disorders."
605 *Journal of Attention Disorders* 19 (9): 805–27.
- 606 Khachadourian, Vahe, Behrang Mahjani, Sven Sandin, Alexander Kolevzon, Joseph D. Buxbaum,
607 Abraham Reichenberg, and Magdalena Janecka. 2023. "Comorbidities in Autism Spectrum Disorder
608 and Their Etiologies." *Translational Psychiatry* 13 (1): 71.
- 609 Kuleshov, Maxim V., Matthew R. Jones, Andrew D. Rouillard, Nicolas F. Fernandez, Qiaonan Duan,
610 Zichen Wang, Simon Koplev, et al. 2016. "Enrichr: A Comprehensive Gene Set Enrichment
611 Analysis Web Server 2016 Update." *Nucleic Acids Research* 44 (W1): W90–97.
- 612 Kwong, Alan, Andrew P. Boughton, Mukai Wang, Peter VandeHaar, Michael Boehnke, Gonçalo
613 Abecasis, and Hyun Min Kang. 2022. "FIVEx: An Interactive eQTL Browser across Public
614 Datasets." *Bioinformatics* 38 (2): 559–61.
- 615 Li, Heng. 2013. "Aligning Sequence Reads, Clone Sequences and Assembly Contigs with BWA-MEM."
616 <http://arxiv.org/abs/1303.3997>.
- 617 Li, Heng, Bob Handsaker, Alec Wysoker, Tim Fennell, Jue Ruan, Nils Homer, Gabor Marth, Gonçalo
618 Abecasis, Richard Durbin, and 1000 Genome Project Data Processing Subgroup. 2009. "The
619 Sequence Alignment/Map Format and SAMtools." *Bioinformatics* 25 (16): 2078.
- 620 Lin, Jake, Nina Mars, Yu Fu, Pietari Ripatti, Tuomo Kiiskinen, Taru Tukiainen, Samuli Ripatti, and Matti
621 Pirinen. 2023. "Integration of Biomarker Polygenic Risk Score Improves Prediction of Coronary
622 Heart Disease." *JACC: Basic to Translational Science*, October.
623 <https://doi.org/10.1016/j.jacbts.2023.07.006>.
- 624 Lin, Jake, Rubina Tabassum, Samuli Ripatti, and Matti Pirinen. 2020. "MetaPhat: Detecting and
625 Decomposing Multivariate Associations From Univariate Genome-Wide Association Statistics."
626 *Frontiers in Genetics* 11 (May): 431.
- 627 MacArthur, Jacqueline, Emily Bowler, Maria Cerezo, Laurent Gil, Peggy Hall, Emma Hastings, Heather
628 Junkins, et al. 2017. "The New NHGRI-EBI Catalog of Published Genome-Wide Association
629 Studies (GWAS Catalog)." *Nucleic Acids Research* 45 (D1): D896–901.
- 630 McLaren, William, Laurent Gil, Sarah E. Hunt, Harpreet Singh Riat, Graham R. S. Ritchie, Anja
631 Thormann, Paul Flicek, and Fiona Cunningham. 2016. "The Ensembl Variant Effect Predictor."
632 *Genome Biology* 17 (1): 1–14.

- 633 Morton, James T., Dong-Min Jin, Robert H. Mills, Yan Shao, Gibraan Rahman, Daniel McDonald, Qiyun
634 Zhu, et al. 2023. “Multi-Level Analysis of the Gut-Brain Axis Shows Autism Spectrum Disorder-
635 Associated Molecular and Microbial Profiles.” *Nature Neuroscience* 26 (7): 1208–17.
- 636 Nalls, Mike A., Nathan Pankratz, Christina M. Lill, Chuong B. Do, Dena G. Hernandez, Mohamad Saad,
637 Anita L. DeStefano, et al. 2014. “Large-Scale Meta-Analysis of Genome-Wide Association Data
638 Identifies Six New Risk Loci for Parkinson’s Disease.” *Nature Genetics* 46 (9): 989–93.
- 639 Nayar, Kritika, Julia M. Sealock, Nell Maltman, Lauren Bush, Edwin H. Cook, Lea K. Davis, and Molly
640 Losh. 2021. “Elevated Polygenic Burden for Autism Spectrum Disorder Is Associated With the
641 Broad Autism Phenotype in Mothers of Individuals With Autism Spectrum Disorder.” *Biological
642 Psychiatry* 89 (5): 476–85.
- 643 Nesterova, Anastasia P., Anton Yuryev, Eugene A. Klimov, Maria Zharkova, Maria Shkrob, Natalia V.
644 Ivanikova, Sergey Sozin, and Vladimir Sobolev. 2019. *Disease Pathways: An Atlas of Human
645 Disease Signaling Pathways*. Elsevier.
- 646 Okbay, Aysu, Yeda Wu, Nancy Wang, Hariharan Jayashankar, Michael Bennett, Seyed Moeen Nehzati,
647 Julia Sidorenko, et al. 2022. “Polygenic Prediction of Educational Attainment within and between
648 Families from Genome-Wide Association Analyses in 3 Million Individuals.” *Nature Genetics* 54
649 (4): 437–49.
- 650 Palmer, Tom M., Debbie A. Lawlor, Roger M. Harbord, Nuala A. Sheehan, Jon H. Tobias, Nicholas J.
651 Timpson, George Davey Smith, and Jonathan A. C. Sterne. 2012. “Using Multiple Genetic Variants
652 as Instrumental Variables for Modifiable Risk Factors.” *Statistical Methods in Medical Research* 21
653 (3): 223–42.
- 654 Pedersen, C. B., J. Bybjerg-Grauholm, M. G. Pedersen, J. Grove, E. Agerbo, M. Bækvad-Hansen, J. B.
655 Poulsen, et al. 2018. “The iPSYCH2012 Case-Cohort Sample: New Directions for Unravelling
656 Genetic and Environmental Architectures of Severe Mental Disorders.” *Molecular Psychiatry* 23 (1):
657 6–14.
- 658 Peyre, Hugo, Tabea Schoeler, Chaoyu Liu, Camille Michèle Williams, Nicolas Hoertel, Alexandra
659 Havadahl, and Jean-Baptiste Pingault. 2021. “Combining Multivariate Genomic Approaches to
660 Elucidate the Comorbidity between Autism Spectrum Disorder and Attention Deficit Hyperactivity
661 Disorder.” *Journal of Child Psychology and Psychiatry, and Allied Disciplines* 62 (11): 1285–96.
- 662 Phillips, A. N., and G. D. Smith. 1991. “How Independent Are ‘Independent’ Effects? Relative Risk
663 Estimation When Correlated Exposures Are Measured Imprecisely.” *Journal of Clinical
664 Epidemiology* 44 (11): 1223–31.
- 665 Pinto, Dalila, Elsa Delaby, Daniele Merico, Mafalda Barbosa, Alison Merikangas, Lambertus Klei,
666 Bhooma Thiruvahindrapuram, et al. 2014. “Convergence of Genes and Cellular Pathways
667 Dysregulated in Autism Spectrum Disorders.” *American Journal of Human Genetics* 94 (5): 677–94.
- 668 Piovesan, Allison, Maria Caracausi, Francesca Antonaros, Maria Chiara Pelleri, and Lorenza Vitale.
669 2016. “GeneBase 1.1: A Tool to Summarize Data from NCBI Gene Datasets and Its Application to
670 an Update of Human Gene Statistics.” *Database: The Journal of Biological Databases and Curation*
671 2016 (December). <https://doi.org/10.1093/database/baw153>.
- 672 Pittman, Alan M., Hon-Chung Fung, and Rohan de Silva. 2006. “Untangling the Tau Gene Association
673 with Neurodegenerative Disorders.” *Human Molecular Genetics* 15 (suppl_2): R188–95.
- 674 Poplin, Ryan, Pi-Chuan Chang, David Alexander, Scott Schwartz, Thomas Colthurst, Alexander Ku, Dan
675 Newburger, et al. 2018. “A Universal SNP and Small-Indel Variant Caller Using Deep Neural
676 Networks.” *Nature Biotechnology* 36 (10): 983–87.
- 677 Rees, Jessica M. B., Angela M. Wood, and Stephen Burgess. 2017. “Extending the MR-Egger Method for
678 Multivariable Mendelian Randomization to Correct for Both Measured and Unmeasured Pleiotropy.”
679 *Statistics in Medicine* 36 (29): 4705–18.
- 680 Risch, N., and K. Merikangas. 1996. “The Future of Genetic Studies of Complex Human Diseases.”
681 *Science* 273 (5281): 1516–17.
- 682 Romero, Marina, Juan Manuel Aguilar, Ángel Del-Rey-Mejías, Fermín Mayoral, Marta Rapado, Marta
683 Peciña, Miguel Ángel Barbancho, Miguel Ruiz-Veguilla, and José Pablo Lara. 2016. “Psychiatric

- 684 Comorbidities in Autism Spectrum Disorder: A Comparative Study between DSM-IV-TR and DSM-
685 5 Diagnosis.” *International Journal of Clinical and Health Psychology: IJCHP* 16 (3): 266–75.
- 686 Ruotsalainen, Sanni E., Juulia J. Partanen, Anna Cichonska, Jake Lin, Christian Benner, Ida Surakka,
687 FinnGen, et al. 2021. “An Expanded Analysis Framework for Multivariate GWAS Connects
688 Inflammatory Biomarkers to Functional Variants and Disease.” *European Journal of Human
689 Genetics: EJHG* 29 (2): 309–24.
- 690 Safran, Marilyn, Irina Dalah, Justin Alexander, Naomi Rosen, Tsippi Iny Stein, Michael Shmoish, Noam
691 Nativ, et al. 2010. “GeneCards Version 3: The Human Gene Integrator.” *Database: The Journal of
692 Biological Databases and Curation* 2010 (August): baq020.
- 693 Schaaf, Christian P., Catalina Betancur, Ryan K. C. Yuen, Jeremy R. Parr, David H. Skuse, Louise
694 Gallagher, Raphael A. Bernier, et al. 2020. “A Framework for an Evidence-Based Gene List
695 Relevant to Autism Spectrum Disorder.” *Nature Reviews. Genetics* 21 (6): 367–76.
- 696 Schwarz, Gideon. 1978. “Estimating the Dimension of a Model.” *Annals of Statistics* 6 (2): 461–64.
- 697 Singh, Katyayani, Mohan Jayaram, Maria Kaare, Este Leidmaa, Toomas Jagomäe, Indrek Heinla, Miriam
698 A. Hickey, et al. 2019. “Neural Cell Adhesion Molecule Negr1 Deficiency in Mouse Results in
699 Structural Brain Endophenotypes and Behavioral Deviations Related to Psychiatric Disorders.”
700 *Scientific Reports* 9 (1): 5457.
- 701 Sullivan, Patrick F., Arpana Agrawal, Cynthia M. Bulik, Ole A. Andreassen, Anders D. Børghlum,
702 Gerome Breen, Sven Cichon, et al. 2018. “Psychiatric Genomics: An Update and an Agenda.” *The
703 American Journal of Psychiatry* 175 (1): 15–27.
- 704 Suzuki, Hisato, Takeshi Yoshida, Naoya Morisada, Tomoko Uehara, Kenjiro Kosaki, Katsunori Sato,
705 Kohei Matsubara, Toshiyuki Takano-Shimizu, and Toshiki Takenouchi. 2019. “De Novo NSF
706 Mutations Cause Early Infantile Epileptic Encephalopathy.” *Annals of Clinical and Translational
707 Neurology* 6 (11): 2334–39.
- 708 Tamlander, Max, Nina Mars, Matti Pirinen, FinnGen, Elisabeth Widén, and Samuli Ripatti. 2022.
709 “Integration of Questionnaire-Based Risk Factors Improves Polygenic Risk Scores for Human
710 Coronary Heart Disease and Type 2 Diabetes.” *Communications Biology* 5 (1): 158.
- 711 Tamm, Leanne, Amie Duncan, Aaron Vaughn, Rhyanne McDade, Nicole Estell, Allison Birnschein, and
712 Lori Crosby. 2020. “Academic Needs in Middle School: Perspectives of Parents and Youth with
713 Autism.” *Journal of Autism and Developmental Disorders* 50 (9): 3126–39.
- 714 Tesi, Niccolo, Sven van der Lee, Marc Hulsman, Henne Holstege, and Marcel J. T. Reinders. 2021.
715 “snpXplorer: A Web Application to Explore Human SNP-Associations and Annotate SNP-Sets.”
716 *Nucleic Acids Research* 49 (W1): W603–12.
- 717 Trampush, J. W., M. L. Z. Yang, J. Yu, E. Knowles, G. Davies, D. C. Liewald, J. M. Starr, et al. 2017.
718 “GWAS Meta-Analysis Reveals Novel Loci and Genetic Correlates for General Cognitive Function:
719 A Report from the COGENT Consortium.” *Molecular Psychiatry* 22 (11): 1651–52.
- 720 Troisi, Jacopo, Reija Autio, Thanos Beopoulos, Carmela Bravaccio, Federica Carraturo, Giulio Corrivetti,
721 Stephen Cunningham, et al. 2020. “Genome, Environment, Microbiome and Metabolome in Autism
722 (GEMMA) Study Design: Biomarkers Identification for Precision Treatment and Primary Prevention
723 of Autism Spectrum Disorders by an Integrated Multi-Omics Systems Biology Approach.” *Brain
724 Sciences* 10 (10). <https://doi.org/10.3390/brainsci10100743>.
- 725 Turley, Patrick, Raymond K. Walters, Omeed Maghziyan, Aysu Okbay, James J. Lee, Mark Alan Fontana,
726 Tuan Anh Nguyen-Viet, et al. 2018. “Multi-Trait Analysis of Genome-Wide Association Summary
727 Statistics Using MTAG.” *Nature Genetics* 50 (2): 229–37.
- 728 Wallace, Chris. 2020. “Eliciting Priors and Relaxing the Single Causal Variant Assumption in
729 Colocalisation Analyses.” *PLoS Genetics* 16 (4): e1008720.
- 730 ———. 2021. “A More Accurate Method for Colocalisation Analysis Allowing for Multiple Causal
731 Variants.” *PLoS Genetics* 17 (9): e1009440.
- 732 Wang, Yipeng, and Eckhard Mandelkow. 2016. “Tau in Physiology and Pathology.” *Nature Reviews.
733 Neuroscience* 17 (1): 5–21.
- 734 Wider, C., C. Vilariño-Güell, B. Jasinska-Myga, M. G. Heckman, A. I. Soto-Ortolaza, S. A. Cobb, J. O.

735 Aasly, et al. 2010. “Association of the MAPT Locus with Parkinson’s Disease.” *European Journal*
736 *of Neurology: The Official Journal of the European Federation of Neurological Societies* 17 (3):
737 483–86.

738 Xie, Min-Jue, Keiko Iwata, Yasuyuki Ishikawa, Yuki Nomura, Tomomi Tani, Koshi Murata, Yugo
739 Fukazawa, and Hideo Matsuzaki. 2021. “Autistic-Like Behavior and Impairment of Serotonin
740 Transporter and AMPA Receptor Trafficking in N-Ethylmaleimide Sensitive Factor Gene-Deficient
741 Mice.” *Frontiers in Genetics* 12 (October): 748627.

742

