

1 **Association of the rs1042522 SNP with prostate cancer risk: a study of cancer tissues,**  
2 **primary tumor cultures and serum samples from a European Caucasian population.**

3

4 Emily Toscano-Guerra<sup>1,2,3\*</sup>, Valentina Maggio<sup>1</sup>, Javier García<sup>1</sup>, Maria Eugenia Semidey<sup>4</sup>,  
5 Ana Celma<sup>5</sup>, Juan Morote<sup>5</sup>, Inés de Torres<sup>4</sup>, Marina Giralt<sup>2</sup>, Roser Ferrer<sup>2</sup>, Rosanna  
6 Paciucci<sup>1,2\*</sup>

7 <sup>1</sup> Cell Signaling and Cancer Progression Laboratory, Vall d'Hebron Institute of Research  
8 (VHIR), Barcelona, Spain.

9 <sup>2</sup> Biochemistry Service, Vall d'Hebron Hospital, Barcelona, Spain.

10 <sup>3</sup>Universidad Peruana Cayetano Heredia, Lima, Perú.

11 <sup>4</sup>Department of Pathology, Vall d'Hebron Hospital, Barcelona, Spain

12 <sup>5</sup>Department of Urology, Vall d'Hebron Hospital, Barcelona, Spain

13

14 \*Correspondence: Dr. Rosanna Paciucci, Biochemistry Service, Vall d'Hebron Hospital,  
15 Barcelona, Spain. [rospacbar@gmail.com](mailto:rospacbar@gmail.com); Dr. Emily Toscano-Guerra, Cell Signaling and  
16 Cancer Progression Laboratory, Vall d'Hebron Institute of Research (VHIR), Barcelona,  
17 Spain. [ema.tg27@gmail.com](mailto:ema.tg27@gmail.com)

18

19

20

## 1 ABSTRACT

2 Prostate cancer (PCa) is the most common cancer in men and the third leading cause of  
3 cancer death in Europe. The *TP53* gene, the most frequently mutated gene in human  
4 cancer, is a tumor suppressor gene with crucial functions in preventing tumor  
5 development. The single nucleotide polymorphism rs1042522, characterized by the  
6 substitution of a proline (PRO) for an arginine (ARG) at the position 72 of the p53 protein  
7 (P72R SNP), was studied in 12 primary tumor cultures from prostate biopsies of untreated  
8 hormone-naïve patients (hnPCs) with aggressive-metastatic cancer (Gleason  $\geq 8$ ), 11  
9 radical prostatectomies, and a cohort of 94 serums from patient with aggressive prostate  
10 cancer using DNA sequencing and melting curve analysis. The results identified a high  
11 frequency of the P72R SNP in prostate cancer samples compared to the general European  
12 (non-cancer) population, suggesting a very significant association ( $p < 0.0001$ ) between  
13 this SNP and the risk of prostate cancer with an odds ratio of 7.937 (IC 95% 5.37-11.00).  
14 The G allele (R72) was more frequent in patients with high Gleason scores ( $\geq 8$ )  
15 suggesting its association to more undifferentiated-malignant PCa lesions.

16

## 17 INTRODUCTION

18 Prostate cancer (PCa), highly prevalent in developed countries, is the most frequent  
19 cancer in men and the third cause of cancer death, after lung and colorectal, in Europe<sup>1,2</sup>.  
20 In the majority of the cases, the cancer is efficiently eradicated and cured by surgical  
21 prostatectomy but late-diagnosed or metastatic aggressive cancers show a five-year  
22 relative survival rate below 30%<sup>3</sup>. The tumor suppressor gene *TP53* plays a key role in  
23 preventing tumor development. Not surprisingly it has been described as the most  
24 commonly mutated gene in human cancers also in PCa<sup>4</sup>. Somatic *TP53* mutations occur  
25 more frequently as a later event, and are driver of the aggressive and metastatic cancer,  
26 including PCa<sup>5</sup>.

27 Several hereditary genetic variations, found in approximately 5-20% of different cancer  
28 types, are associated with pathogenic variants of genes such *BRCA2* and *ATM*. In PCa,  
29 pathogenic germline variants of the *TP53* gene have been described with a relative risk  
30 of 4.7-8.6, which is comparable with the frequencies described in those genes<sup>6</sup>.

1 Germline variants alleles known as a single-nucleotide polymorphisms (SNPs) are  
2 present in >1% of the population, occur naturally, and are considered not to have a severe  
3 impact on people health. However, many of these variants may impact the structure or the  
4 function of the protein.

5 To study the characteristics of the aggressive metastatic prostate tumors that lead to  
6 incurable fatal disease, we established and partially characterized 12 primary tumor  
7 cultures derived from prostate biopsies of untreated hormone-naïve patients (hnPCs) with  
8 aggressive metastatic cancer. To identify potential predictive markers, the hnPCs cultures  
9 were screened for the presence of mutations in driver genes by DNA sequencing. Here,  
10 we describe the identification of the *TP53* gene variant allele rs1042522 in the majority  
11 of the hnPCs analyzed. The presence of this SNP was confirmed in a cohort of 11 radical  
12 prostatectomy tissues and 94 serum samples from Caucasian patients with prostate cancer.  
13 The association of the variant allele with prostate cancer risk was investigated using  
14 comparisons with the healthy (non-cancer) European (non-Finnish) population from  
15 GnomAD v2.1.1.

## 16 MATERIALS AND METHODS

### 17 **Prostate primary cultures (hnPCs) from hormone-naïve patients**

18 Primary cultures from prostate tumor needle biopsies of hormone-naïve patients (i.e.,  
19 without previous treatments) were established in our laboratory from a cohort of patients  
20 selected for (i) high levels of serum PSA (>50 ng/mL), (ii) positive digital rectal  
21 examination (DRE), and (iii) Gleason  $\geq$  8. hnPCs were cultured at 37°C in atmosphere of  
22 5% CO<sub>2</sub>, with complete DMEM-F12 medium, containing: 2 mM of L-Glutamine, 100U  
23 of penicillin/mL, 100 µg streptomycin/mL, 0.1 mM of non-essential amino acids, 1 mM  
24 of sodium pyruvate and 7% fetal bovine serum, with Supplement 1X, human FGF-10 (10  
25 ng/µL), human EGF (20 ng/µL), and Vitamin A and E (200 ng/µL). Growth factors and  
26 vitamins were added freshly whereas supplements were prepared and stored at -20°C until  
27 its used. Supplement (100X) was prepared in DMEM-F12 containing glucose (6 mg/mL),  
28 transferrin (1000 µg/mL), human insulin (2.500 µg/mL), putrescine (97 µg/mL), sodium  
29 selenite (30 µM) and hydrocortisone (100 µM).

### 30 **Radical prostatectomies (RPs) samples**

1 Eleven radical prostatectomies (RPs) samples from patients with low-grade operable  
2 tumors (Gleason  $\leq 7$ ) were used to compare with hnPCs. Samples were collected by the  
3 Service of Urology of the Hospital Vall d'Hebron (HVH), preserved in Optimal Cutting  
4 Temperature compound (OCT) and stored at  $-80^{\circ}\text{C}$  until frozen sectioning.

### 5 **Serum samples from PCa patients**

6 A cohort of 94 serum samples from patients with diagnosis of prostate cancer were  
7 selected with the criteria: PSA values  $\geq 50$  ng/mL, males southern European. The study  
8 was performed with surplus serum samples from routinely tested patients at the  
9 Biochemistry Service of HVH, following protocols reviewed and approved by the HVH  
10 Institutional Review Board (Medical Research Ethics Committee, protocol number  
11 PR(AG) 96/2015).

12 Serum samples from blood collected in SST yellow tubes containing separator gels, were  
13 centrifugated at 3,500 rpm for 15 minutes at  $4^{\circ}\text{C}$ . The resulting serum was collected in 2  
14 mL tubes, properly labeled and codified in the biobank system, were then stored at  $-80^{\circ}\text{C}$ .  
15 Sample processing was performed according to the scientific and ethical guidelines  
16 approved by biomedical research law (Decret 1716/2011).

### 17 **DNA extraction**

18 The genomic DNA from hnPCs and RP was extracted using the DNeasy mini kit (Qiagen)  
19 following the manufacturer's guidelines. For the frozen tissue sections from RPs, samples  
20 in criotubes were previously mixed with  $180\ \mu\text{L}$  of ATL buffer, then homogenized by  
21 passing it through a 20-gauge needle attached to an RNase-free syringe about 5-10 times.  
22 Successively, samples were incubated with Proteinase K, at  $56^{\circ}\text{C}$  (1 hour) vortexing every  
23 20 minutes during the incubation period. For genomic DNA extraction from serum  
24 samples, the MagNA Pure 24 Instrument, and total Isolation Kite (Roche) were used, a  
25 fully automated system based on using magnetic glass particles technology (MGP), that  
26 allows the processing of up to 24 samples in about 70 minutes.

### 27 **DNA sequencing**

28 The presence of the variant rs104252 of the *TP53* gene was first identified in hnPCs and  
29 RPs by analysis of the complementary DNA (cDNA) using RNA reverse transcription  
30 (RT) and Sanger sequencing. cDNA synthesis was done with RNA ( $1\ \mu\text{g}$ ) previously  
31 verified for good quality ( $\text{RIN} \geq 7$ ), using the NZY M-MuLV kit (NZY Tech) and the

1 2720 Thermocycler (Applied Biosystems), then the cDNAs were sequenced using Sanger  
2 technology.

### 3 **DNA genotyping**

4 To analyze the Pro72Arg SNP of *TP53* genotyping was conducted for all samples using  
5 the Melting Curve analysis with a customized Light SNIp assay (TIB MOLBIOL) on a  
6 LightCycler 480 II instrument (Roche). Reactions were carried out in a final volume of  
7 20  $\mu$ L, comprising 2.0  $\mu$ L of LightCycler FastStart DNA Master HybProbe mix (Roche),  
8 1.0  $\mu$ L of LightSNIp mix, 3 mM MgCl<sub>2</sub>, and 50 ng of DNA. The ThermoCycler was set  
9 up under the conditions outlined in **Table 1**. Subsequently, the melting curves were  
10 assessed using the Melt Curve Genotyping software (Roche).

### 11 **Control group**

12 To study the association of the SNP P72R with prostate cancer, the frequencies found in  
13 the (non-cancer) European (non-Finnish) population from GnomAD v2.1.1, containing  
14 134 187 samples, were used as a control group.

### 15 **Gleason score and grade groups**

16 The Gleason score is a classification system that assesses the aggressiveness of prostate  
17 tumors based on the architecture of the cancerous tissues and the degree of cells  
18 differentiation as observed under a microscope. This score, which ranges from 6 to 10, is  
19 the sum of two histological patterns (the most common plus the highest grade) within a  
20 single tissue sample (**Table 2**). To better understand and describe the cancer  
21 aggressiveness, the Gleason score is adjusted into a grade group encompassing values  
22 from 1 to 5. The correlation between the score and its respective group, is shown in **Table**  
23 **2**.

### 24 **Statistics**

25 Analysis of associations of frequencies and proportions were done using Contingency  
26 tables and Fisher's test. Values were considered significant when  $p \leq 0.05$ . These analyses  
27 were conducted using GraphPad Prism 9 software. Data and image analyses were  
28 performed using Circos tool (<http://circos.ca/>).

## 29 **RESULTS**

### 30 **The *TP53* gene variant allele rs1042522**

1 More than 20 different SNPs have been described in the *TP53* gene<sup>7</sup>, including the variant  
2 rs1042522, or P72R, in the amino acid 72 of p53 (**Figure 1A**). This variant contains a  
3 guanine at position 357 in codon 72 (**CGC**), a modification that results in a change of the  
4 encoded amino acid from proline (CCC) to arginine (R or ARG). (**Figure 1B**). **Figure 1C**  
5 shows that the arginine induces a decrease in hydrophobicity (turquoise bars) relative to  
6 the most abundant proline (P or PRO), which may impact the interaction of the p53  
7 protein with other ligands (CCAR2 or HRMT1L2).

### 8 **P72R and allele frequencies in primary prostate tumor cultures and cancer tissues**

9 To study the potential role of *TP53* mutations in the aggressiveness of unresectable  
10 prostate tumors, we examined 12 primary tumor cultures (hnPCs) by cDNA sequencing  
11 and identified a mutation at position 357 that changed a cytosine to a guanine. This change  
12 is not a somatic mutation but corresponds to the allelic variant rs1042522. The frequency  
13 found by cDNA sequencing for the ARG variant was 0.82 (9/11) compared to the PRO  
14 variant frequency of 0.18 (2/11) (**Table 3**). To confirm these results, the 12 primary  
15 cultures plus 11 prostatectomy tissue samples from different prostate cancer patients were  
16 genotyped using gDNA melting curve analysis (**Table 3, Figure 2A**). In hnPCs, 2  
17 homozygotes for cytosine (C, proline), 6 homozygotes for guanine (G, arginine), and 4  
18 heterozygotes that predominantly expressed ARG were found. In the RP tissues, 4  
19 homozygotes for cytosine, 5 homozygotes for guanine, and 4 heterozygotes expressed  
20 predominantly ARG. The total frequencies of C and G in primary tumor cultures were  
21 0.33 and 0.67, respectively, while in RP tissues the frequency of C was 0.45 and of G  
22 0.55, indicating that primary tumor cultures have a higher incidence of the SNP P72R  
23 compared to tumor tissues from prostatectomies. These results would suggest that  
24 prostate cancers derived from patients with inoperable tumors may differ from cancers  
25 that can be cured by surgery.

### 26 **P72R SNP is associated with prostate cancer risk.**

27 To validate the above results, the serum of 94 patients with prostate cancer (PSA  $\geq$  50  
28 ng/ml) were genotyped (**Figure 2A**). P72R is a controversial SNP, found at different  
29 frequencies across populations (worldwide), although the majority of sub-populations  
30 show lower frequencies (**Figure 2B**). In the selected European (non-Finnish) non-cancer  
31 population the frequency of the G allele was 26.3%, while the frequency of the C allele  
32 was 73.6% (**Figure 2B**). In the serum samples, the frequency of homozygotes for ARG  
33 (hARG) was 53.38% (53/94), homozygotes for PRO (hPRO) were 8.58% (8/94) and

1 heterozygotes was 35.10% (33/94) (**Figure 2C**). The allele frequencies observed in our  
2 cohort of serum, hnPCs, and prostatectomy tissues were then compared with the (non-  
3 cancer) European (non-Finnish) control population (**Figure 2D**). The results show  
4 significant differences in the recurrence rate of the P72R SNP in all samples compared to  
5 the control population, suggesting an association of the P72R SNP with prostate cancer.  
6 The significance of this association assessed by a contingency analysis (Fisher's test),  
7 showed a very significant association between the P72R SNP and prostate cancer in all  
8 samples analyzed, with a frequency of 73.93% for the G allele and an odds ratio of 7.937  
9 (IC 95% 5.37-11.00) for serum samples ( $p < 0.0001$ ) (shown in **Table 4**).

#### 10 **P72R SNP is not significantly associated with high Gleason tumors.**

11 The ability of a mutant p53 protein to neutralize apoptosis and transform cells in  
12 cooperation with EJ-Ras is enhanced when codon 72 encodes ARG (R72)<sup>8</sup>. This R72  
13 variant was reported to be able to bind more efficiently and inactivate PGC-1 $\alpha$ <sup>4</sup>, a  
14 transcriptional target of p53-induced apoptosis in prostate cancer cells, thereby promoting  
15 cell invasion and metastasis<sup>4</sup>. These observations support our findings that a higher R72  
16 allele frequency is present in more aggressive PCa tumors. To study whether the Gleason  
17 score (grade) of all genotyped patients was associated to higher frequency of the R72  
18 allele, we used the Gleason grading group (1 to 5 instead of 6 to 10) and divided them  
19 into 2 different groups: low - medium aggressive tumors (Gleason grade 1 - 3) and highly  
20 aggressive tumors (Gleason grade 4 - 5). Patients were genotyped as hARG, hPRO, and  
21 heterozygous (ARG-PRO). Data from the cohort of 94 serum patients were plotted on a  
22 Circos plot according to Gleason group. **Figure 3A** shows the distribution of patient's  
23 proportions in each Gleason group. Although a marked lower proportion of the P72 allele  
24 and a remarkably higher frequency of the R72 allele are visible in high Gleason tumors,  
25 these differences did not reach statistical significance ( $p\text{-value} = 0.2867$ ) (**Figure 3A and**  
26 **3B**).

#### 27 DISCUSSION

28 The tumor suppressor gene *TP53*, reported mutated with a high frequency (53.3%) in  
29 aggressive mCRPC<sup>9,4</sup>, was the focus of this investigation. The finding that 9 out of 12  
30 primary tumor cultures from patients with aggressive metastatic PCa had a p53 protein  
31 with arginine (CGC) at codon 72 while only 2 cultures had a proline (CCC), was  
32 intriguing. An initial explanation for the enrichment of the R72 variant in hnPCs from

1 cancer tissues was the Loss of Heterozygosity (LOH), particularly studied in exon 4 that  
2 includes the codon 72 of the protein. In fact, loss of the Proline (C) allele and preferential  
3 retention of the Arginine (G) allele was described in primary tumors and metastatic tissues  
4 of squamous cell carcinoma of vulva<sup>10</sup>, head and neck<sup>11</sup>, colorectal tumors<sup>12</sup>, and lung  
5 cancer<sup>13</sup>. In addition, a recent meta-analysis study using the TCGA pan-cancer database  
6 and patients selected for the P72R heterozygosity, reported that 31% (127/409) of  
7 heterozygotes had lost the P72 allele in the corresponding tumor tissue<sup>14</sup> indicating that  
8 the G allele is preferentially selected for tumor development, possibly due to enhanced  
9 p73-induced apoptosis<sup>15</sup> and the modulation of tumor metabolism by regulating PGC-  
10 1 $\alpha$ <sup>16</sup>. Although proper LOH screening was not performed in our cancer cohort, the  
11 genotyping analysis of serum samples, that showed a similar frequency of the R72 variant  
12 compared to hnPCs and cancer tissues from prostatectomy, suggested that it is more likely  
13 to be an association with PCa risk.

14 Because of the high frequency of arginine in the genotyped DNA from hnPCs and RPs  
15 was significantly different from the European non-cancer population, a larger number of  
16 samples (serum) from patients with prostate cancer were examined. The results confirmed  
17 the high frequency of the guanine (C to G) at position 357 compared to a control European  
18 non-cancer population selected from the GnomAD v2.1, indicating a very significant  
19 association ( $p < 0.0001$ ) of this SNP and prostate cancer risk, with odds ratio of 7.937 (IC  
20 95% 5.37-11.00). Several reports have described a similar significant association of the  
21 R72 SNP with the risk of developing cutaneous melanoma, breast cancer, or prostate  
22 cancer<sup>17-20</sup>. The study on PCa compared 187 Iranian patients with 185 control individual  
23 negative for cancer<sup>20</sup>. Although the frequency of G allele in cancer patients (65.77%) was  
24 not as high as we report here (73.93%), the association was statistically significant  
25 compared to the control ( $p < 0.05$ ).

26 It is worth noting that several reports have shown controversial results<sup>21-23</sup> or failed to  
27 demonstrate a significant association between the rs1042522 variant and the risk of any  
28 type of cancer<sup>24-28</sup>, probably due to limited sample size or selection bias. For example, in  
29 a colorectal cancer study in the Northern-European population, no significant association  
30 between the presence of the SNP and the risk of cancer was reported<sup>29</sup>, but the healthy  
31 control samples selected had a high frequency of ARG allele (61%) in contrast to the  
32 estimated 26% frequency of the (non-cancer) European population from GnomAD v2.1.1  
33 (**Figure 2**). Similar to our findings, one study in prostate cancer reported an association



1 between Pro/Pro and a lower risk of prostate cancer<sup>30</sup>. However, a number of other reports  
2 have shown conflicting results<sup>30–32,27,33–35</sup>. Appropriate representativeness in control  
3 samples is necessary for accurate results.

4 Beyond these conflicting findings regarding the ARG frequency at codon 72 of p53, it is  
5 crucial to consider the potential impact of this variant on cancer development, although  
6 its full understanding is not clear. Studies in mice revealed that the presence of the R72  
7 variant shows higher incidence of mammary tumors<sup>36</sup>. In addition, this variant associated  
8 to increased phosphorylation of p53 and enhanced transactivation of *CDKN1A* (p21<sup>WAF1</sup>)  
9 in response to starving, with consequent augmented growth arrest but reduced apoptosis,  
10 a situation that favors survival<sup>37</sup>. Furthermore, *TP53* mutations tend to preferentially  
11 occur in the R72 allele. In the presence of a mutant *TP53* (e.g. R175H, R273H, and  
12 A138V) harboring the R72 SNP, an enhanced capacity for migration, invasion, and  
13 metastasis in various cancer cell lines, including PCa, has been reported<sup>16</sup>. These  
14 observations provide strong evidence that ARG at codon 72 affects the tumor suppression  
15 activity of p53.

16 Although no significant association of P72R SNP with the Gleason score was found in  
17 our study, the G allele (R72) was more frequent in patients with high Gleason ( $\geq 8$ , group  
18 4-5) suggesting a possible association to more undifferentiated-malignant PCa lesions  
19 (**Figure 3B**). A few studies also evaluated the association between this polymorphism and  
20 tumor grades and found no significant association with clinical stage or Gleason grade in  
21 PCa<sup>33,34,38,39</sup>. One study identified a link with a modest influence of this SNP and shorter  
22 biochemical recurrence (BCR) after radical prostatectomy<sup>35</sup>. Another study in the  
23 Japanese population<sup>31</sup>, observed a particularly high frequency of the ARG allele in  
24 patients with metastases and those with a high-Gleason score ( $\geq 8$ ). However, this study  
25 analyzed the association using the arginine allele as a reference, meaning they calculated  
26 the significance level between the Pro/Pro and Pro/Arg genotype compared to arginine.  
27 As expected, they found no significant difference, as proline did not differ significantly  
28 from the control group.

29 To validate and extend our findings, further investigation with a larger number of samples  
30 and consideration of the family history of prostate cancer would be needed. Nevertheless,  
31 our present results suggest that a simple but powerful test (gDNA assessment for the P72R  
32 SNP) may be useful for the early identification of patients at risk of aggressive metastatic  
33 prostate cancer, allowing clinicians to intervene at an early stage.

1 ***Acknowledgments:*** The authors extend their gratitude to the Biochemistry service from  
2 Hospital Vall d’Hebron, Barcelona-Spain, for technical support.

3 ***Author contributions***

4 Contributors ETG, and RP conceived and designed the study. ETG, VM, MES, AC and  
5 MG collected clinical samples and data. ETG, VM and JG, performed experiments, and  
6 analyzed data. ETG and RP generated figures and tables and wrote the manuscript. RP,  
7 JM, IT and RF contributed to data interpretation and critically reviewed the manuscript.  
8 All authors approved the final manuscript for submission.

9 **The authors declare no conflicts of interest.**

## 1 REFERENCES

- 2 1. Ferlay, J. *et al.* Global Cancer Observatory: Cancer Today.  
3 <http://gco.iarc.fr/today/home> (2020).
- 4 2. Wang, L. *et al.* Prostate Cancer Incidence and Mortality: Global Status and  
5 Temporal Trends in 89 Countries From 2000 to 2019. *Frontiers in Public Health* **10**,  
6 (2022).
- 7 3. Prostate Cancer - Statistics. *Cancer.Net* [https://www.cancer.net/cancer-](https://www.cancer.net/cancer-types/prostate-cancer/statistics)  
8 [types/prostate-cancer/statistics](https://www.cancer.net/cancer-types/prostate-cancer/statistics) (2023).
- 9 4. McCann, J. J. *et al.* Mutant p53 elicits context-dependent pro-tumorigenic  
10 phenotypes. *Oncogene* **41**, 444–458 (2022).
- 11 5. Arora, K. & Barbieri, C. E. Molecular Subtypes of Prostate Cancer. *Curr Oncol Rep*  
12 **20**, 58 (2018).
- 13 6. Maxwell, K. N. *et al.* Inherited TP53 Variants and Risk of Prostate Cancer.  
14 *European Urology* **81**, 243–250 (2022).
- 15 7. T, B., Jld, P. & Me, M. Common genetic variants in the TP53 pathway and their  
16 impact on cancer. *Journal of molecular cell biology* **11**, (2019).
- 17 8. Marin, M. C. *et al.* A common polymorphism acts as an intragenic modifier of  
18 mutant p53 behaviour. *Nat Genet* **25**, 47–54 (2000).
- 19 9. Robinson, D. *et al.* Integrative clinical genomics of advanced prostate cancer. *Cell*  
20 **161**, 1215–1228 (2015).
- 21 10. Brooks, L. A. *et al.* Preferential retention of codon 72 arginine p53 in squamous cell  
22 carcinomas of the vulva occurs in cancers positive and negative for human  
23 papillomavirus. *Cancer Res* **60**, 6875–6877 (2000).
- 24 11. Schneider-Stock, R. *et al.* Retention of the arginine allele in codon 72 of the p53  
25 gene correlates with poor apoptosis in head and neck cancer. *Am J Pathol* **164**,  
26 1233–1241 (2004).
- 27 12. Schneider-Stock, R. *et al.* Selective Loss of Codon 72 Proline p53 and Frequent  
28 Mutational Inactivation of the Retained Arginine Allele in Colorectal Cancer.  
29 *Neoplasia* **6**, 529–535 (2004).

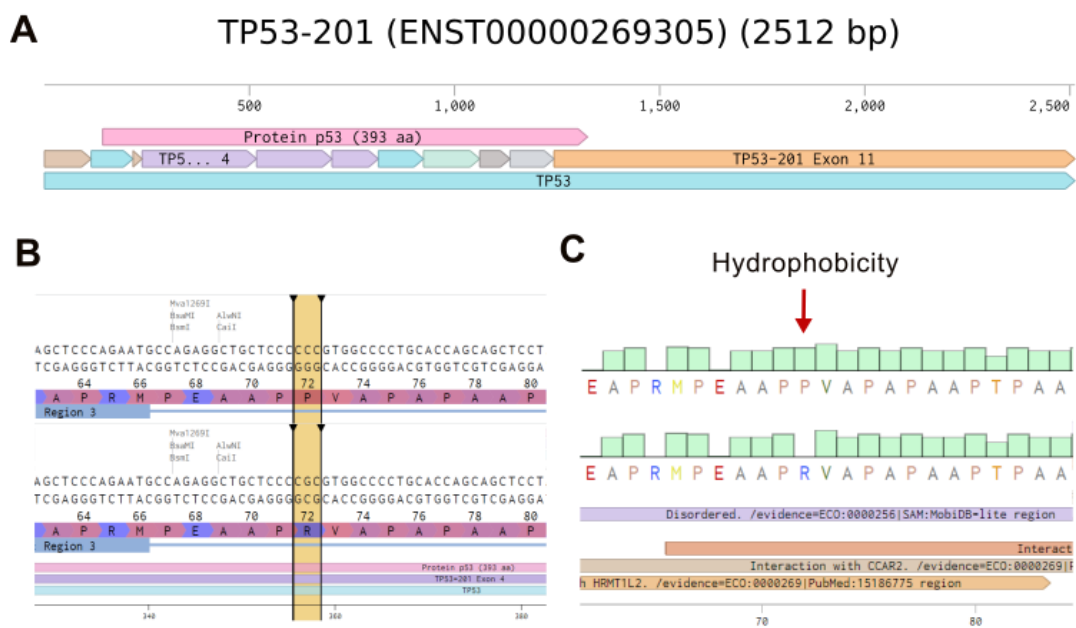
- 1 13. Papadakis, E. D., Soultziz, N. & Spandidos, D. A. Association of p53 codon 72  
2 polymorphism with advanced lung cancer: the Arg allele is preferentially retained in  
3 tumours arising in Arg/Pro germline heterozygotes. *Br J Cancer* **87**, 1013–1018  
4 (2002).
- 5 14. De Souza, C. *et al.* Effect of the p53 P72R Polymorphism on Mutant TP53 Allele  
6 Selection in Human Cancer. *J Natl Cancer Inst* **113**, 1246–1257 (2021).
- 7 15. Marin, M. C. *et al.* A common polymorphism acts as an intragenic modifier of  
8 mutant p53 behaviour. *Nat Genet* **25**, 47–54 (2000).
- 9 16. Basu, S. *et al.* Mutant p53 controls tumor metabolism and metastasis by regulating  
10 PGC-1 $\alpha$ . *Genes & Development* **32**, 230 (2018).
- 11 17. Shen, H. *et al.* p53 Codon 72 Arg Homozygotes Are Associated with an Increased  
12 Risk of Cutaneous Melanoma. *J Invest Dermatol* **121**, 1510–1514 (2003).
- 13 18. Volodko, N. *et al.* TP53 codon 72 Arg/Arg polymorphism is associated with a  
14 higher risk for inflammatory bowel disease development. *World J Gastroenterol* **21**,  
15 10358–10366 (2015).
- 16 19. Dia, Y. *et al.* Arg Allele of P53 Gene Codon72 is a Risk Factor for Breast Cancer in  
17 Senegalese Women. *Journal of Molecular and Genetic Medicine* **11**, (2017).
- 18 20. Doosti, A. & Dehkordi, P. G. The p53 codon 72 polymorphism and association to  
19 prostate cancer in Iranian patients. *African Journal of Biotechnology* **10**, 12821–  
20 12825 (2011).
- 21 21. Ezzikouri, S. *et al.* The Pro variant of the p53 codon 72 polymorphism is associated  
22 with hepatocellular carcinoma in Moroccan population. *Hepatology Research* **37**,  
23 748–754 (2007).
- 24 22. Mohana Devi, S. *et al.* Analysis of Genetic Damage and Gene Polymorphism in  
25 Hepatocellular Carcinoma (HCC) Patients in a South Indian Population. *Dig Dis Sci*  
26 **58**, 759–767 (2013).
- 27 23. Son, M. S. *et al.* Promoter polymorphisms of pri-miR-34b/c are associated with  
28 hepatocellular carcinoma. *Gene* **524**, 156–160 (2013).

- 1 24. Tang, N.-P., Wu, Y.-M., Wang, B. & Ma, J. Systematic review and meta-analysis of  
2 the association between P53 codon 72 polymorphism and colorectal cancer.  
3 *European Journal of Surgical Oncology (EJSO)* **36**, 431–438 (2010).
- 4 25. Weng, Y. *et al.* p53 codon 72 polymorphism and Hematological Cancer Risk: An  
5 Update Meta-Analysis. *PLOS ONE* **7**, e45820 (2012).
- 6 26. Ye, J., Li, X.-F., Wang, Y.-D. & Yuan, Y. Arg72Pro Polymorphism of TP53 Gene  
7 and the Risk of Skin Cancer: a Meta-Analysis. *PLOS ONE* **8**, e79983 (2013).
- 8 27. Zhang, L. *et al.* Association between p53 Pro72Arg polymorphism and prostate  
9 cancer risk: a meta-analysis. *J Biomed Res* **25**, 25–32 (2011).
- 10 28. Xu, T., Xu, Z.-C., Zou, Q., Yu, B. & Huang, X.-E. P53 Arg72Pro polymorphism and  
11 bladder cancer risk--meta-analysis evidence for a link in Asians but not Caucasians.  
12 *Asian Pac J Cancer Prev* **13**, 2349–2354 (2012).
- 13 29. Krüger, S. *et al.* The p53 codon 72 variation is associated with the age of onset of  
14 hereditary non-polyposis colorectal cancer (HNPCC). *Journal of Medical Genetics*  
15 **42**, 769–773 (2005).
- 16 30. Henner, W. D. *et al.* Association of codon 72 polymorphism of p53 with lower  
17 prostate cancer risk. *Prostate* **49**, 263–266 (2001).
- 18 31. Suzuki, K. *et al.* A p53 codon 72 polymorphism associated with prostate cancer  
19 development and progression in Japanese. *J Biomed Sci* **10**, 430–435 (2003).
- 20 32. Li, M. S., Liu, J. L., Wu, Y., Wang, P. & Teng, H. Meta-analysis demonstrates no  
21 association between p53 codon 72 polymorphism and prostate cancer risk. *Genet*  
22 *Mol Res* **10**, 2924–2933 (2011).
- 23 33. Lu, Y. *et al.* Association of p53 codon 72 polymorphism with prostate cancer: an  
24 update meta-analysis. *Tumor Biol.* **35**, 3997–4005 (2014).
- 25 34. Sivoňová, M. K. *et al.* Association of p53 and p21 polymorphisms with prostate  
26 cancer. *Biomedical Reports* **3**, 707–714 (2015).
- 27 35. Duncan, A. *et al.* Association of TP53 Single Nucleotide Polymorphisms with  
28 Prostate Cancer in a Racially Diverse Cohort of Men. *Biomedicines* **11**, 1404  
29 (2023).

- 1 36. Gunaratna, R. T. *et al.* Dynamic role of the codon 72 p53 single-nucleotide  
2 polymorphism in mammary tumorigenesis in a humanized mouse model. *Oncogene*  
3 **38**, 3535–3550 (2019).
- 4 37. Kung, C.-P., Liu, Q. & Murphy, M. E. The codon 72 polymorphism of p53  
5 influences cell fate following nutrient deprivation. *Cancer Biology & Therapy* **18**,  
6 484–491 (2017).
- 7 38. Babaei, F. *et al.* The TP53 Codon 72 Polymorphism and Risk of Sporadic Prostate  
8 Cancer among Iranian Patients. *Iran J Public Health* **43**, 453–459 (2014).
- 9 39. Aydin, M. *et al.* Lack of evidence of HPV etiology of prostate cancer following  
10 radical surgery and higher frequency of the Arg/Pro genotype in Turkish men with  
11 prostate cancer. *Int Braz J Urol* **43**, 36–46 (2017).
- 12
- 13
- 14

1 **FIGURE LEGENDS**

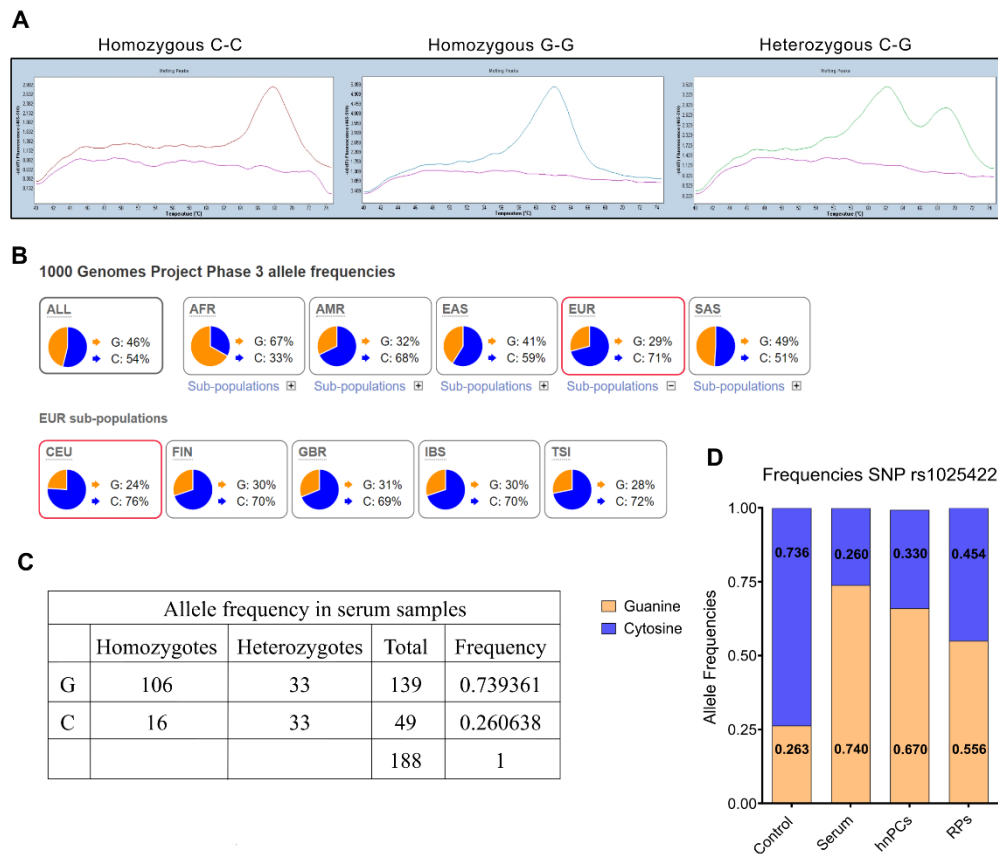
2 **Figure 1. SNP P72R in the TP53 gene. A)** The canonic transcript for variant rs1042522.  
 3 The TP53 transcript 201 consists of 11 exons encoding a protein of 393 amino acids  
 4 including exons 2 to the 5' region of exon 11. **B)** The SNP P72R (black arrows)  
 5 polymorphic variants, Proline (P) encoded by the triplet CCC, and Arginine (R) encoded  
 6 by CGC at position 357 of the coding strand. **C)** The change in the hydrophobic profile  
 7 of variant rs1042522 (red arrow) when P is changed to R, a polar-positive amino acid.  
 8 Figures from Benchling.com.



9

10 **Figure 2: Allele frequencies in the European population and in prostate cancer**  
 11 **samples. A)** Representative melting curves from serum samples. Peaks of absorbance at  
 12 different dissociation temperatures. Left panel: homozygous samples with cytosine in  
 13 both strands show a dissociation peak at 68°C. Center panel: homozygous samples with  
 14 guanine in both strands show a dissociation peak at 60°C. Right panel: heterozygous  
 15 samples with cytosine and guanine are identified by both peaks. **B)** Global frequency for  
 16 the allele rs1042522. Allele G has a lower frequency in all sub populations except for the  
 17 African population. Data and Images from Ensemble.org. **C)** rs1042522 frequencies in  
 18 serum samples from patients with prostate cancer. **D)** rs1042522 frequencies in primary  
 19 tumor cultures (hnPCs), serum samples, radical prostatectomy biopsies, compared to the  
 20 European population.

1

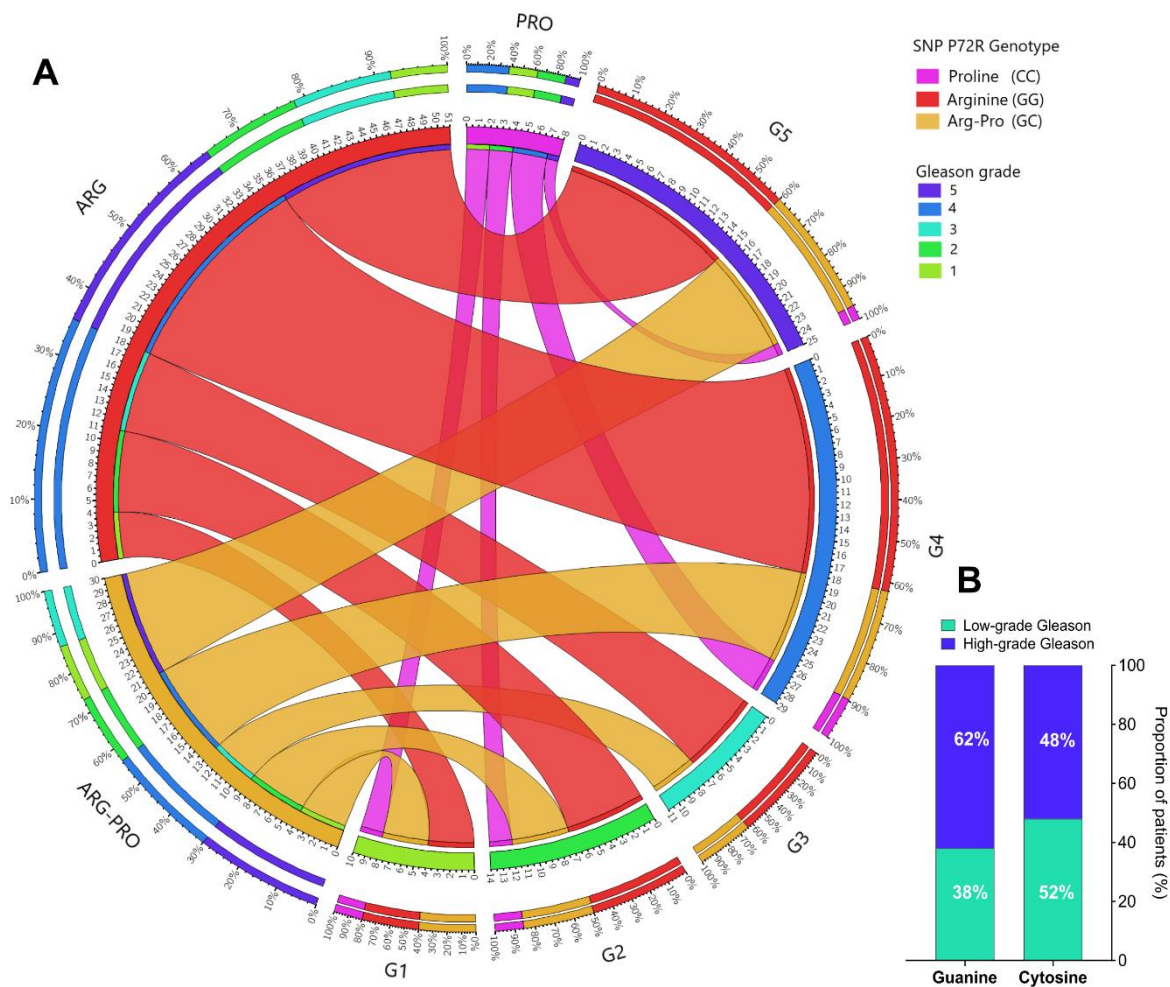


2

3 **Figure 3. Distribution of the rs1042522 variant in 94 prostate cancer patients**  
 4 **according to Gleason grade. A)** Circos plot displaying the distribution of the P72R  
 5 genotypes according to patient Gleason score. **B)** Distribution of the SNP in low Gleason  
 6 grade (1-3) and high Gleason grade (4-5); the contingency analysis of these proportions  
 7 did not yield significant results. Gleason grade 1: Gleason score  $\leq 6$ ; Gleason grade 2-3:  
 8 Gleason score = 7; Gleason grade 4: Gleason score = 8; Gleason grade 5: Gleason score  
 9  $\geq 9$ .



1



2

3

4

5

6

7

1 **TABLES:**

2 **Table 1. Cycling conditions for Melting curve analysis**

3

Phase.	Cycles	Temperature	Hold	Ramp rate (°C/s)
<b>Denaturation</b>	1	95	10 min	4.6
<b>Cycling</b>	45	95	10 sec	4.6
		60	10 sec	2.4
		72	15 sec	4.6
<b>Melting</b>	1	95	30 sec	4.6
		40	2 min	2.0
		75	0 sec	-
<b>Cooling</b>	1	40	30 sec	2.0

4

5

6 **Table 2. Prostate cancer classification in groups according to Gleason pattern.**

Patterns*	Score	Group	Significance
1+2, 3+2, 3+3	≤ 6	1	Low-grade cancer
3+4	7	2	Medium-grade cancer
4+3	7	3	Medium-grade cancer
3+5, 4+4, 5+3	8	4	High-grade cancer
4+5, 5+4	9	5	High-grade cancer
5+5	10	5	High-grade cancer

\*Gleason patterns indicate the grade of tissue differentiation.

<sup>1</sup>Small, uniform glands, well differentiated.

<sup>2</sup>More stroma between glands, well differentiated.

<sup>3</sup>Distinctly infiltrative margins, moderately differentiated.

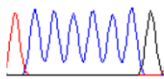
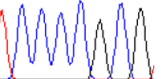
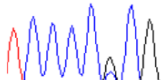
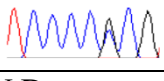
<sup>4</sup>Irregular masses of neoplastic glands, poorly differentiated.

<sup>5</sup>Only occasional gland formation, poorly differentiated/anaplastic tissue.

7

1 **Table 3. P72R genotyping in primary cultures and radical prostatectomy tissues**

2

SAMPLE	Sanger sequencing		Expressed Aminoacid	LightSNiP assay	
	cDNA			gDNA	
hnPC01	CCC	TCCCCCG 	Proline	CC	Homozygous Proline
hnPC06	CCC		Proline	CC	Homozygous Proline
hnPC02	CGC		Arginine	GG	Homozygous
hnPC03	CGC		Arginine	GG	Arginine
hnPC08	CGC	TCCCCGCG 	Arginine	GG	
hnPC09	CGC		Arginine	GG	
hnPC10	CGC		Arginine	GG	
hnPC12	CGC		Arginine	GG	
hnPC04	CGC	TCCCCGCG 	Arginine	CG	Heterozygous
hnPC05	CGC		Arginine	CG	
hnPC11	CGC	TCCCCGCG 	Arginine	CG	
hnPC07	N.D	N.D	N.D	CG	
RP11D	CGC		Arginine	CG	Heterozygous
RP14D	CGC		Arginine	GG	Homozygous
RP17B	CGC		Arginine	GG	Homozygous
RP18F	CGC		Arginine	GG	Homozygous
RP21D	CGC		Arginine	GG	Homozygous
RP23D	CCC		Proline	CC	Homozygous
RP36E	CCC		Proline	CC	Homozygous
RP37A	CGC		Arginine	CG	Heterozygous
RP40B	CCC		Proline	CC	Homozygous
RP63A	CGC		Arginine	GG	Homozygous
RP68C	CCC		Proline	CC	Homozygous

1 **Table 4. Analysis of the association of the rs1042522 variant and prostate cancer**

2

<b>Serum samples</b>	<b>Prostate Cancer, n (%)</b>	<b>GnomAD Non-cancer, n (%)</b>	<b>Odds Ratio (95% CI)*</b>	<b>P- value*</b>
Arginine (G allele)	139 (0.74)	31021 (0.26)	7.937 (5.73– 11.00)	<0.0001
Proline (C allele)	49 (0.26)	86797 (0.74)		
Total	188	117818		
<b>hnPCs samples</b>				
Arginine (G allele)	16 (0.67)	31021 (0.26)	5.596 (2.395– 13.080)	<0.0001
Proline (C allele)	8 (0.33)	86797 (0.74)		
Total	24	117818		
<b>RPs samples</b>				
Arginine (G allele)	12(0.55)	31021 (0.26)	3.358(1.451-7.772)	0.0058
Proline (C allele)	10(0.45)	86797 (0.74)		
Total	22	117818		
Contingency table for the association between the P72R SNP and prostate cancer. The selected European (non-Finnish) non-cancer population from GnomAD was used as a control. *Odds ratio and p-values were calculated with the Fisher’s Test.				

3

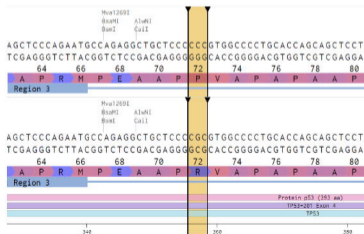
4

5

# A TP53-201 (ENST00000269305) (2512 bp)

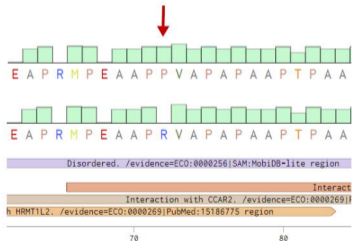


## B



## C

### Hydrophobicity

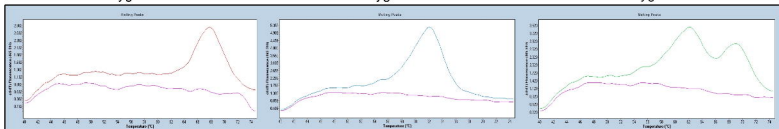


**A**

Homozygous C-C

Homozygous G-G

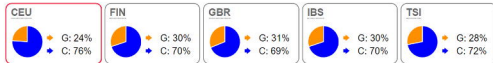
Heterozygous C-G

**B**

1000 Genomes Project Phase 3 allele frequencies



EUR sub-populations

**C**

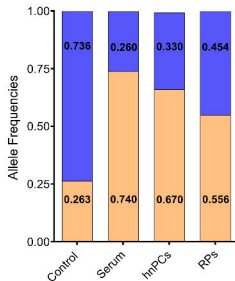
Allele frequency in serum samples

	Homozygotes	Heterozygotes	Total	Frequency
G	106	33	139	0.739361
C	16	33	49	0.260638
			188	1

■ Guanine  
■ Cytosine

**D**

Frequencies SNP rs1025422



**A**