

1 **Retrospective Analysis of Blood Biomarkers of Neurological Injury in Human Cases of**  
2 **Viral Infection and Bacterial Sepsis**

3 Maggie L. Bartlett<sup>1,2</sup>, Heather Goux<sup>1,2</sup>, Linwood Johnson<sup>1,2</sup>, Kevin L. Schully<sup>3</sup>, Melissa  
4 Gregory<sup>4</sup>, Joost Brandsma<sup>4</sup>, Josh G. Chenoweth<sup>4</sup>, Danielle V. Clark<sup>4</sup>, Luis Felipe Rivera<sup>7,8</sup>,  
5 Carlos Lezcano-Coba<sup>7,8</sup>, Amy Y. Vittor<sup>5</sup>, Ronald Hayes<sup>6</sup>, Josefrancisco Galué<sup>7,8</sup>, Jean-Paul  
6 Carrera<sup>7,8,9</sup>, Darci R. Smith<sup>1</sup>

7  
8 <sup>1</sup>Naval Medical Research Command, Biological Defense Research Directorate, Microbiology  
9 and Immunology Department; Ft. Detrick, MD, <sup>2</sup>Parsons Corporation, Health and Biosciences;  
10 Centreville, VA, <sup>3</sup>Naval Medical Research Command, Biological Defense Research Directorate,  
11 ACESO Department; Ft. Detrick, MD, <sup>4</sup>The Austere environments Consortium for Enhanced  
12 Sepsis Outcomes, The Henry M. Jackson Foundation for the Advancement of Military Medicine  
13 Inc., Bethesda, MD, <sup>5</sup>University of Florida, Department of Medicine; Gainesville, FL, <sup>6</sup>Banyan  
14 Biomarkers, <sup>7</sup>Gorgas Memorial Institute, Panama City, Panama, <sup>8</sup>Carson Centre for Research in  
15 Environment and Emerging Infectious Diseases, La Peñita, Darién, Panama, <sup>9</sup>Department of  
16 Biology, University of Oxford, Oxford, United Kingdom,  
17 Corresponding author: Darci R. Smith [darci.smith.civ@health.mil](mailto:darci.smith.civ@health.mil)

18 **Abstract:**

19 **Background.** Blood biomarkers of neurological injury could provide a rapid diagnosis of central  
20 nervous system (CNS) injury caused by infections. An FDA-approved assay for mild traumatic  
21 brain injury (TBI) measures glial fibrillary acidic protein (GFAP) and ubiquitin carboxy-terminal  
22 hydrolase L1 (UCH-L1), which signal astrocyte and neuronal injury, respectively. Here, we  
23 assessed the applicability of this biomarker assay for determining infection-induced brain injury.

24 **Methods.** We measured serum levels of GFAP and UCH-L1 retrospectively in serum samples  
25 from three study populations: 1) human cases infected with Venezuelan equine encephalitis virus  
26 (VEEV) and Madariaga virus (MADV) (n = 73), 2) human sepsis patients who were severely ill  
27 or diagnosed with encephalitis (n = 66), and 3) sepsis cases that were subsequently evaluated for  
28 cognitive impairment (n = 64).

29 **Results.** In the virus infection group, we found elevated GFAP for VEEV (p = 0.014) and  
30 MADV (p = 0.011) infections, which correlated with seizures (p = 0.006). In the bacterial sepsis  
31 group, GFAP was elevated in cases diagnosed with encephalitis (p = 0.0007) and correlated with  
32 headaches (p = 0.0002). In the bacterial sepsis cases with a later cognitive assessment, elevated  
33 GFAP (p = 0.0057) at study enrollment was associated with cognitive impairment six months  
34 later with a positive prognostic capacity of 79% (CI: 66–95%; p = 0.0068).

35 **Conclusions.** GFAP and UCH-L1 levels measured using an FDA-approved assay for TBI may  
36 indicate brain injury resulting from viral or bacterial infections and could predict the  
37 development of neurological sequelae.

38 **Keywords:** Six words → Viruses, encephalitis, biomarkers, GFAP, UCH-L1, sepsis

39 **Article word count (Background through Discussion):** 3,006

## 40 **Background**

41 Central nervous system (CNS) infections, which can lead to brain injury via invasion of  
42 brain tissue, inflammation, and/or the release of toxins, can be diagnostically challenging (1).  
43 Diagnosis requires a combination of clinical assessment, magnetic resonance imaging (MRI)  
44 studies and computed tomography (CT) scans, cerebrospinal fluid (CSF) analysis, and  
45 identification of the causative pathogen. Neurological injury biomarkers could provide a new  
46 approach to the diagnosis of infection-induced CNS injury. The first FDA-approved test for a  
47 blood biomarker for acute traumatic brain injury (TBI) detects glial fibrillary acidic protein  
48 (GFAP) and ubiquitin carboxy-terminal hydrolase L1 (UCH-L1), which signal astrocyte and  
49 neuronal injury, respectively (2). GFAP and UCH-L1 are also used as biomarkers for  
50 neurodegenerative diseases in blood or CSF, like multiple sclerosis (3, 4), neuromyelitis optica  
51 spectrum disorder (5), Alzheimer's disease (6-8), and less often for CNS infections (9, 10).

52 Venezuelan equine encephalitis virus (VEEV), eastern equine encephalitis virus (EEEV),  
53 and Madariaga virus (MADV) are important mosquito-borne, single-stranded positive-sense  
54 RNA viruses (*Togaviridae; Alphavirus*) that circulate throughout the Americas and infect the  
55 CNS of humans and equids (11). VEEV enzootic/endemic subtype ID infection is prevalent in  
56 the eastern province of Darién, Panama, with seroprevalence up to 75% in some villages(11).  
57 EEEV was reclassified as two different species in 2010: EEEV in North America and MADV in  
58 Latin America (12). MADV was not associated with human outbreaks until 2010 when the first  
59 human MADV outbreak was reported in Darién, Panama (13). A force-of-infection model  
60 applied to two serosurveys from Darién Province in 2012 and 2017 found endemic alphavirus  
61 transmission (14). Alphavirus disease typically presents as a self-limited febrile illness but can be  
62 fatal, and persistent neurological symptoms have occurred for up to five years following MADV

63 or VEEV exposure (11).

64 Sepsis, including septicemia, pneumonia, skin infections, and intra-abdominal infections,  
65 is a serious and potentially life-threatening consequence of the exaggerated release of cytokines  
66 and other inflammatory mediators in response to infection. The inflammatory response leads to  
67 cellular injury and organ dysfunction, including the CNS (15). Although bacteria can cause  
68 meningitis and brain abscesses, CNS injury may result indirectly from cytokine-mediated  
69 alterations in the blood-brain barrier (BBB), hypoxia, and microcirculatory abnormalities (13).  
70 Sepsis-associated encephalopathy affects about 30% of patients with sepsis and is characterized  
71 by an altered level of consciousness (16). Sepsis patients who recover often suffer long-term  
72 cognitive impairment resulting from BBB disruption, neuroinflammation, neurotransmitter  
73 dysfunction, and neuronal loss (17, 18).

74 Here, we determined the efficacy of an FDA-approved Brain Trauma Indicator (BTI)  
75 biomarker assay, designed for brain injury in mild TBI patients (2), in detecting brain injury  
76 caused by infections. The three study populations we evaluated included acute alphavirus cases,  
77 sepsis cases, and sepsis cases that were evaluated after recovery for cognitive impairment (Table  
78 1). We measured higher levels of GFAP in all cohorts compared to uninfected controls,  
79 suggesting that GFAP is a good indicator of infection-induced brain injury and may predict  
80 neurological sequelae, such as cognitive impairment. This is the first report that supports the use  
81 of an FDA-approved blood-based biomarker assay to detect possible neurological injury in viral  
82 and bacterial infections.

## 83 **Methods**

### 84 **Study Populations and Sample Collection Procedures**

#### 85 *Study Population 1: virus infection group*

86 Sera and metadata were collected from consenting adults and children with parental consent  
87 during an acute alphaviral outbreak in 2018-2019 in Aruza, Darién, by the Gorgas Memorial  
88 Institute, with negative control serum samples collected from healthy individuals in the region.  
89 Sera were deidentified and shipped on dry ice to the Naval Medical Research Command  
90 (NMRC). The studies were approved by the Panamanian Ministry of Health (protocol: 2077), the  
91 Gorgas Institutional Review Board (IRB) (protocol: 335/CBI/ICGES/21), and the University of  
92 Florida IRB (protocol: 201500292).

93 Enzyme-linked immunosorbent assays (ELISAs) were used to measure IgM and IgG  
94 antibodies to MADV and VEEV and samples were run in duplicate. ELISA antigens were  
95 prepared from the EEEV (prepared by Dr. Robert Shope at the Yale Arbovirus Research Unit in  
96 August 1989) and VEEV complex strain 78V-3531 (from an infected mouse brain) (11). All  
97 samples were also tested for viruses using virus-specific plaque reduction neutralization tests  
98 (PRNTs). A positive sample was reported as the reciprocal of the highest dilution that reduced  
99 plaque counts by >80% (PRNT<sub>80</sub>). Reactivity to VEEV (strain TC-83) and MADV (strain GML-  
100 267113, isolated from a fatal human case in Panama in 2017) was measured (14).

### 101 ***Study population 2: bacterial sepsis***

102 Sera from suspected human sepsis cases were collected by NMRC's Austere  
103 environments Consortium for Enhanced Sepsis Outcomes (ACESO) program during prospective  
104 observational studies in Cambodia and Ghana (19, 20) under IRB-approved protocols (protocols:  
105 NMRC.2013.0019 and NMRC.2016.0004-GHA) in compliance with all applicable U.S. Federal  
106 regulations governing the protection of human subjects. All subjects, or their legally authorized  
107 representatives, provided written informed consent and authorized future use of their specimens  
108 and data. Responses were recorded on a standardized case report form and included

109 demographics, medical history, physical exam findings, and admitting diagnosis. A diagnosis of  
110 a CNS infection was based on the judgment of two physicians. If these two physicians did not  
111 agree on a diagnosis, a third physician reviewed patient records and made the diagnosis. Other  
112 infections were confirmed by culture or polymerases chain reaction (PCR) (supplementary data  
113 1) and included respiratory tract infection, bacteremia, abscess, cellulitis, gastrointestinal tract  
114 infection, fungemia, oral cavity infection, reproductive tract infection, or cardiovascular infection  
115 (20).

### 116 ***Study population 3: bacterial sepsis with cognitive assessment***

117 Sera from human sepsis cases were collected by the NMRC ACESO program during  
118 prospective observational studies in Ghana as described above for study population 2. Sera were  
119 collected at enrollment (day 0; n = 64) or day 28 after enrollment (day 28; n = 38). Impairment  
120 was assessed using the Montreal Cognitive Assessment Basic (MoCA-B) (21) for individuals at  
121 enrollment (n = 64), upon discharge (n = 64), day 28 (n = 38), and months 6 (n = 32) and 12 (n =  
122 20) after discharge, as available.

### 123 **GFAP and UCH-L1 Assays**

124 Sera was evaluated with the Banyan BTI assay according to the manufacturer's guidelines.  
125 Antibodies were vortexed, diluted in antibody diluent, and kit standards prepared following a  
126 serial dilution (UCH-L1: 2,560 pg/mL to 80 pg/mL; GFAP 320 pg/mL to 10 pg/mL). Serum was  
127 added to plates (UCH-L1: 25  $\mu$ L; GFAP: 50  $\mu$ L) in duplicate and incubated for 60 minutes at 37  
128  $^{\circ}$ C with shaking at 500 rpm. Plates were washed, detection antibody added and allowed to  
129 incubate for 60 minutes at 37  $^{\circ}$ C while shaking at 500 rpm. Plates were washed and 150  $\mu$ L of  
130 substrate added per well prior to reading optical density at 225 nm. If the concentration exceeded  
131 the upper limit of quantitation, serum was diluted and re-run. Samples that were below the lower

132 limit of quantitation (LLOQ) were included at half the minimum LLOQ for statistical analyses.  
133 The cutoff for positivity for mild TBI in the BTI assay is 327 pg/mL UCH-L1 and 22 pg/mL  
134 GFAP.

### 135 **Statistical Analyses**

136 Statistical analyses were performed using SPSS (Version 19.0. Armonk, NY: IBM Corp) or  
137 GraphPad v9 and included the Mann-Whitney U test following normality testing, the  
138 Jonckheere–Terpstra (JT) test, and area under the curve plots. A chi-square test was used to  
139 determine statistical significance for age and sex differences. The relevant tests are indicated in  
140 figure legends.

141

## 142 **Results**

### 143 **Study Population 1: Virus Infection**

144 For population 1, serum samples were collected from 33 cases of acute alphavirus infection in  
145 eastern Panama. Subjects with confirmed infections tested positive for VEEV, MADV, or both  
146 by IgM ELISA and PRNT (Supplemental Table 1), whereas subjects with likely infection tested  
147 positive for either IgM ELISA or PRNT. Symptoms consistent with alphavirus illness included  
148 fever, chills, headaches, and, less commonly, myalgia, arthralgia, nausea, vomiting, and seizures  
149 (Figure 1A, Table 2). Patients infected with MADV had a higher incidence of seizures (37.5%)  
150 compared to those infected with VEEV ID (5.0%), and the only fatality occurred in an individual  
151 with MADV. Serum levels of GFAP and UCH-L1 were determined with the BTI assay for  
152 uninfected controls and the alphavirus-positive individuals. Mean UCH-L1 levels were  
153 significantly lower in cases of VEEV but not in cases of MADV, whereas the mean GFAP levels  
154 were significantly higher for subjects with either alphavirus (Figure 1B). However, UCH-L1 was

155 elevated in the fatal case and in two out of the four cases with seizures. The highest levels of  
156 GFAP were observed in three of the four cases with seizures and the fatal case. When grouped  
157 by time since onset of fever (early 0–7 days, mid 8–14 days, or late >15 days), UCH-L1  
158 decreased ( $p = 0.00031$ ) during the mid-timeframe and was statistically unchanged either early or  
159 late (Figure 1C). However, GFAP was elevated at the early ( $p = 0.013$ ) and mid ( $p = 0.0059$ )  
160 timeframes but not late ( $p = 0.092$ ) (Figure 1C), which may be due to the small sample size at  
161 this time point. For symptoms, seizures were significantly associated with higher levels of GFAP  
162 ( $p = 0.006$ ) (Table 2). Interestingly, GFAP levels were higher in those without inflammatory  
163 response symptoms, including fever, chills, and myalgia, and this increase was statistically  
164 significant for chills ( $p = 0.023$ ). There were no significant associations between levels of UCH-  
165 L1 and symptoms. A Wilcoxon rank-sum analysis indicated that the relationship between GFAP  
166 and acute alphavirus infection, i.e., infection with both VEEV and MADV, acute MADV  
167 infection, or acute VEEV infection was strengthened, while the relationship between UCH-L1  
168 and any infection remained unchanged (Supplemental Table 2). These results suggest that GFAP  
169 may be a promising biomarker of acute alphavirus disease and may indicate disease severity.

170

## 171 **Study Population 2: Bacterial Sepsis**

172 We analyzed patient samples from sepsis studies completed in Cambodia (20) and Ghana (19) to  
173 measure changes in UCH-L1 or GFAP as a result of bacterial infection. This study population  
174 was comprised of 53 severely ill, hospitalized patients who presented with at least two systemic  
175 inflammatory response syndrome criteria and a suspected infection. These included a sepsis  
176 cohort with symptoms consistent with CNS disease ( $n = 21$ ) and individuals without symptoms  
177 of CNS disease but positive for infection ( $n = 32$ ). A control group ( $n = 13$ ) comprised healthy



178 individuals from the same region. A diagnosis of a CNS infection was determined after a review  
179 by two physicians of the patient's medical history, which included evaluation for nerve palsies,  
180 paralysis, reflex response abnormalities, and assessment by the Glasgow coma scale. The  
181 severely ill patients presented with fever, headache, abdominal pain, nausea, and diarrhea (Figure  
182 2A). This cohort reported more myalgia than the alphavirus cohort; however, there was no  
183 difference in myalgia between CNS and other infections. Serum levels of GFAP and UCH-L1  
184 were determined with the BTI assay for control samples, the severely ill individuals with no  
185 signs of a CNS infection, and those diagnosed with a CNS infection. We found no significant  
186 differences in UCH-L1 levels; however, GFAP levels were significantly higher in individuals  
187 with CNS infections and elevated, although not significantly, in patients with non-CNS  
188 infections (Figure 2B). Also, patients with fatal vs. non-fatal cases had similar levels of UCH-L1  
189 and GFAP. Among symptoms, headache was positively associated with GFAP ( $p = 0.0002$ ) but  
190 negatively associated with UCH-L1 ( $p < 0.0001$ ) (Table 3). These results are similar to those for  
191 our viral infection study population (group 1) and indicate that elevated levels of GFAP may be a  
192 potential biomarker to indicate CNS infection.

### 193 **Study Population 3: Bacterial Sepsis with Cognitive Assessment**

194 Finally, we determined whether the levels of these biomarkers measured at study enrollment  
195 would predict cognitive impairment after sepsis based on MoCA-B scores, which were measured  
196 during study enrollment and on subsequent visits up to a year later. MoCA-B scoring  
197 differentiates among cognitive syndromes by assessing memory, executive function, attention,  
198 language, visuospatial parameters, and orientation (21). A normal score is  $\geq 26$ , whereas  
199 impairment falls into mild (18–25), moderate (10–17), and severe ( $< 10$ ) categories. Previous  
200 sepsis studies completed in Ghana (19) provided serum samples collected prospectively from

201 hospitalized cases of sepsis at study enrollment (day 0) and day 28 after enrollment. MoCA-B  
202 scores were determined for individuals at study enrollment, upon discharge, on day 28, and 6 and  
203 12 months after discharge, when feasible. Levels of UCH-L1 and GFAP were measured in  
204 individuals at study enrollment (day 0) and day 28 after enrollment. Mean UCH-L1 levels were  
205 unchanged, whereas the mean GFAP levels were significantly higher at both time points (Figure  
206 3A). We then evaluated the levels of GFAP and UCH-L1 at study enrollment (day 0) stratified  
207 by the average MoCA score after discharge and up to 12 months later. Levels of UCH-L1  
208 trended higher in cases with severe cognitive impairment and persisted up to 12 months after  
209 symptom onset; however, they did not reach statistical significance (Figure 3B). Levels of GFAP  
210 in serum at study enrollment increased with increasing levels of cognitive impairment vs.  
211 controls up to twelve months after study enrollment (Figure 3B). The percentage of individuals  
212 who developed cognitive impairment after discharge from the hospital was compared to the  
213 results of the BTI assay at study enrollment (Table 4). Individuals with a higher level of  
214 cognitive impairment after discharge were more likely to have had a positive BTI assay at study  
215 enrollment. Thus, the Banyan BTI assay may predict the development of reduced cognitive  
216 function after infection. Supporting these associations, trends for UCH-L1 ( $p = 0.00363$ ) and  
217 GFAP ( $p = 1.849 \times 10^{-8}$ ) were significant by the JT test for ranked categories. Thus, serum  
218 GFAP levels at study enrollment predicted cognitive impairment as measured by MoCA-B  
219 scores at six months. The six-month time point was chosen for comparison because the sample  
220 size was split equally between patients with normal ( $\geq 26$ ) or impaired ( $< 26$ ) MoCA-B scores.  
221 Not only was cognitive impairment associated with higher levels of GFAP at enrollment ( $p =$   
222  $0.0057$ ), but this metric should identify 79% (CI: 66–95%;  $p=0.0068$ ) of cases correctly based on  
223 time-dependent receiver operating characteristic (ROC) curves (Figure 3C and Figure 3D).

224 Therefore, GFAP levels may serve as an effective biomarker for predicting the development of  
225 cognitive impairment in individuals with severe infectious diseases.

## 226 **Discussion**

227 We evaluated two brain biomarkers using an FDA-approved BTI assay developed  
228 originally for acute TBI, in which elevation of either or both biomarkers are considered  
229 indicative of brain injury (2). GFAP is an intermediate filament protein expressed almost  
230 exclusively in astrocytes, where it is induced by neural injury and released upon disintegration of  
231 the astrocyte cytoskeleton (22). UCH-L1 is expressed only in neurons where it is involved in the  
232 ubiquitination of proteins intended for degradation by the proteasomal pathway and plays an  
233 important role in the removal of oxidized or misfolded proteins in both normal and pathological  
234 conditions (8). Analyzing both GFAP and UCH-L1 may reflect distinct causes of brain injury. In  
235 severe TBI, focal mass lesions cause an increase in GFAP, whereas diffuse brain injuries cause  
236 an increase in UCH-L1 (23, 24). Here, we found a significant increase in GFAP, but not UCH-  
237 L1, in the alphavirus and sepsis cohorts, suggesting that GFAP is a shared biomarker for brain  
238 injury and infectious diseases of the CNS.

239 Previous work on biomarkers, including GFAP, analyzed only the CSF, not serum from  
240 viral encephalitis cases, and none used an FDA-approved assay (25-30). Early identification of  
241 sepsis-associated encephalopathy, one of the most serious clinical manifestations of sepsis (31),  
242 would provide a more accurate diagnosis and prognosis, which now relies on nonspecific clinical  
243 manifestations and imaging features, often followed by lumbar punctures and  
244 electroencephalograms. Several biomarkers have been proposed for the rapid detection of sepsis-  
245 related brain injury (32), including serum GFAP and UCH-L1, which correlate with the  
246 occurrence, severity, and prognosis of sepsis-associated encephalopathy (33, 34). We found

247 higher levels of GFAP in acute CNS-involved sepsis, and these higher levels of serum GFAP at  
248 the time of hospitalization correlated with cognitive decline up to twelve months after symptom  
249 onset in our group 3 cohort. We also observed elevated UCH-L1, similar to the previous study  
250 (33), but it was not statistically significant, which may be due to the sample size or time of  
251 sampling. Therefore, GFAP and possibly UCH-L1 may serve as biomarkers for sepsis-related  
252 brain injury and should be further evaluated.

253 Lesions in the brain of fatal human VEEV cases appear to result from injury due to virus  
254 replication and clearance of infected cells by the immune system (35). Although neurons are the  
255 primary targets of encephalitic alphaviruses and viral cytopathology is important in CNS  
256 dysfunction, fatal encephalitis is likely mediated by the immune response to infection rather than  
257 direct virus replication (36). For individuals infected by the encephalitic alphaviruses, mean  
258 levels of GFAP and the incidence of seizures were significantly higher than controls, whereas the  
259 mean UCH-L1 levels were reduced significantly in VEEV but not MADV. The latter results  
260 were unexpected because neurons are the major target cells of the encephalitic alphaviruses, but  
261 these results may be due to the time of sampling. In cell culture and animal models, encephalitic  
262 alphaviruses also infect astrocytes (37-39), which are immuno-activated in infected animals (36).  
263 Our GFAP results likely indicate that astrocytes were injured by virus infection or the immune  
264 response.

265 Our results suggests that GFAP levels may serve as an effective biomarker for predicting  
266 the development of cognitive impairment in individuals with severe infectious diseases.  
267 Neurological sequelae after recovery from alphavirus infection occurs frequently and includes  
268 seizures, paralysis, intellectual disability, behavioral changes, photophobia, coma, or visual  
269 disturbances (11, 40). GFAP may predict the development of neurologic sequelae after

270 alphavirus infection, similar to our results with the bacterial sepsis cohort, and is a focus of our  
 271 future studies.

272 In conclusion, CNS infections have high rates of morbidity and mortality and blood-  
 273 based diagnostic assays for brain injury could aid clinicians when deciding whether imaging is  
 274 needed and to initiate treatment. Our data support the use of the BTI assay to identify brain  
 275 injury caused by CNS infection that could lead to neurological sequelae. Further research is  
 276 needed to identify the relevant timeframes, examine additional cohorts, and conduct clinical  
 277 trials to determine the impact of this assay on patient outcomes. Our study lays the foundation  
 278 for these efforts.

## 279 Tables

280 **Table 1.** Study populations for neurological injury biomarker assessment

Group	Subgroup	Serum (N)	Country	Reference
<b>1—Virus Infection</b>	Acute MADV	8	Panama	N/A
	Acute VEEV	22		
	Both (MADV/VEEV)	3		
	Controls <sup>1</sup>	40		
<b>2—Bacterial Infection (Sepsis)</b>	CNS Infection	21	Ghana n=10, Cambodia n=11	20, 21
	Other Infection	32	Ghana n=14, Cambodia n=18	
	Controls <sup>2</sup>	13	Ghana	21
<b>3—Bacterial Infection (Sepsis with Cognitive Assessment)</b>	Study Enrollment (day 0)	64	Ghana	21
	28 Days Post Enrollment	38		

	Controls <sup>2</sup>	13		
--	-----------------------	----	--	--

281 <sup>1</sup> Group 1 controls are samples from the region that were negative for VEEV/MADV by all assays.

282 <sup>2</sup> Group 2 and 3 controls were healthy individuals from the region.

283

284 **Table 2.** Associations between symptoms and biomarkers for group 1 virus infection study

285 population. Clinical symptoms reported in 30 cases for which sex was reported. Statistical

286 significance was determined by a chi-square test.

		N	GFAP pg/ml (95% CI)	p-value	UCH-L1 pg/ml (95% CI)	p-value
Sex	Male	22	70.4 (-20.4, 161.2)	0.482	281.4 (143.2, 419.6)	0.159
	Female	8	38.0 (13.8, 62.2)		369.3 (159.0, 579.7)	
Age (mean)	0-10	8	157.6 (-121.1, 436.2)	0.881	494.8 (109.0, 880.6)	0.306
	11-20	8	25.4 (2.8, 48.0)		260.7 (103.5, 418.0)	
	21-30	6	18.8 (6.7, 30.9)		188.3 (134.6, 242.0)	
	31-40	5	28.4 (-22.6, 79.3)		160.7 (76.5, 244.8)	
	>41	3	44.7 (-19.8, 109.3)		389.5 (-483.7, 1262.8)	
Fever	Yes	23	33.4 (20.9, 46.0)	0.391	295.3 (173.0, 417.6)	0.902
	No	7	154.8 (-182.0, 491.5)		336.3 (7.2, 665.4)	
Chills	Yes	13	20.4 (7.0, 33.8)	0.023	222.5 (128.1, 316.9)	0.277
	No	17	93.4 (-25.0, 211.7)		367.9 (182.5, 553.2)	
Headache	Yes	16	22.9 (11.7, 34.1)	0.135	243.5 (161.8, 325.2)	0.868
	No	14	106.2 (-40.1, 252.5)		375.0 (145.9, 604.1)	
Arthralgia	Yes	9	19.8 (4.2, 35.5)	0.08	232.1 (69.3, 394.9)	0.205
	No	21	79.7 (-15.1, 174.5)		336.0 (188.5, 483.6)	
Myalgia	Yes	5	16.4 (6.7, 26.1)	0.303	195.1 (125.4, 264.7)	0.636
	No	25	70.8 (-8.24, 149.9)		326.8 (195.1, 458.5)	
Nausea	Yes	7	38.0 (8.9, 67.1)	0.508	328.7 (128.7, 528.7)	0.447
	No	23	69.0 (-17.6, 155.6)		297.6 (159.5, 435.7)	
Vomiting	Yes	10	40.2 (16.8, 63.6)	0.482	382.5 (118.3, 646.7)	0.218
	No	20	72.5 (-28.0, 173.0)		266.0 (147.9, 384.2)	

Abdominal pain	Yes	3	32.7 (-52.2, 117.6)	0.863	357.1 (-569.6, 1283.7)	0.809
	No	27	65.0 (-8.12, 138.1)			
Diarrhea	Yes	2	25.1 (-204.9, 255.1)	0.678	224.6 (-534.6, 983.7)	0.868
	No	28	64.4 (-6.01, 134.7)			
Lower back pain	Yes	1	17.1	0.862	229.8	0.773
	No	29	623.3 (-4.6, 131.1)			
Seizures	Yes	4	302.6 (-417.4, 1022.7)	0.006	665.5 (-329.0, 1659.9)	0.428
	No	26	24.7 (16.3, 33.1)			

287

288 **Table 3.** Associations between symptoms and biomarkers in group 2 bacterial infection (sepsis).

289 Statistical significance was determined by a chi-square test.

	N	GFAP pg/ml (95% CI)	p-value	UCH-L1 pg/ml (95% CI)	P-value
Sex			0.1490		0.1793
Male	49	27.1 (15.0, 39.2)		807.1 (197.7, 1416)	
Female	4	49.3 (19.3, 79.4)		281.1 (173.4, 388.7)	
Age (mean)			0.424		0.9144
11-20	3	6.767 (-0.199, 13.7)		529.1 (-1298, 2356)	
21-30	5	82.84 (-10.55, 176.2)		2818 (-4244-9880)	
31-40	10	35.76 (8.028, 63.49)		416 (70.84, 761.2)	
>41	35	44.68 (25.41, 63.95)		535.1 (233.5, 836.7)	
Fever			0.8704		0.9376
Yes	36	36.02 (25.20, 46.84)		352.0 (247.3, 456.7)	
No	13	63.46 (6.191, 120.7)		883.0 (37.25, 1729)	
Headache			0.0002		<0.0001
Yes	44	428.7 (205.7, 651.8)		43.41 (26.21, 60.61)	
No	5	42.34 (-28.95, 113.6)		1058 (-277.8, 2393)	
Arthralgia			0.5708		0.9455
Yes	6	63.83 (-7.523, 135.2)		327.0 (106.2, 547.8)	
No	47	41.97 (26.37, 135.2)		778.8 (195.3, 1362)	
Myalgia			0.1299		0.9811
Yes	2	75.70 (-236.9, 38.3)		316.0 (188.7, 2012)	
No	51	43.22 (27.7, 58.75)		743.8 (206.3, 1281)	
Abdominal pain			0.0793		0.3775
Yes	23	48.89 (31.96, 65.82)		944.3 (-199.5, 2088)	
No	30	41.04 (16.92, 65.17)		561.6 (200.1, 923.1)	

Diarrhea	Yes	21	36.46 (19.82,53.10)	0.3224	376.9 (182.6, 571.3)	0.2149
	No	32	49.69 (26.65, 72.73)		957.8 (101.0, 1815)	

290

291 **Table 4.** Cognitive impairment on follow up in group 3 bacterial infection (sepsis with cognitive  
 292 assessment).

MoCA category	Cognitive impairment after discharge percentage (n)	BTI positive at enrollment percentage (n)
Normal ( $\geq 26$ )	8.2% (5)	20% (1)
Mild (25-18)	49.2% (30)	46.7 % (14)
Moderate (17-10)	26.2% (16)	56.3% (9)
Severe (<10)	16.4% (9)	100% (9)

293

294

295

296

297

298

299

300

301

302

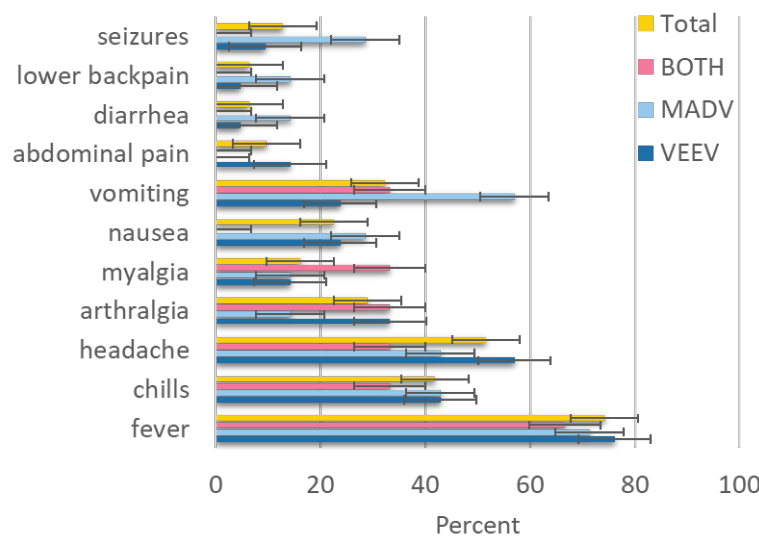
303

304

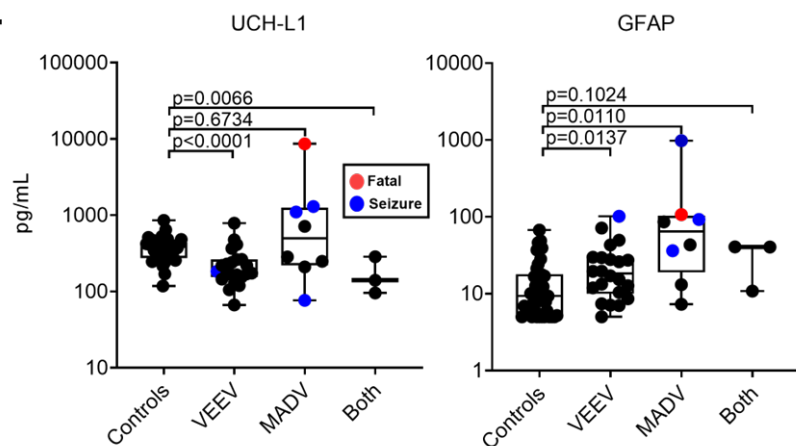


305 **Figures**

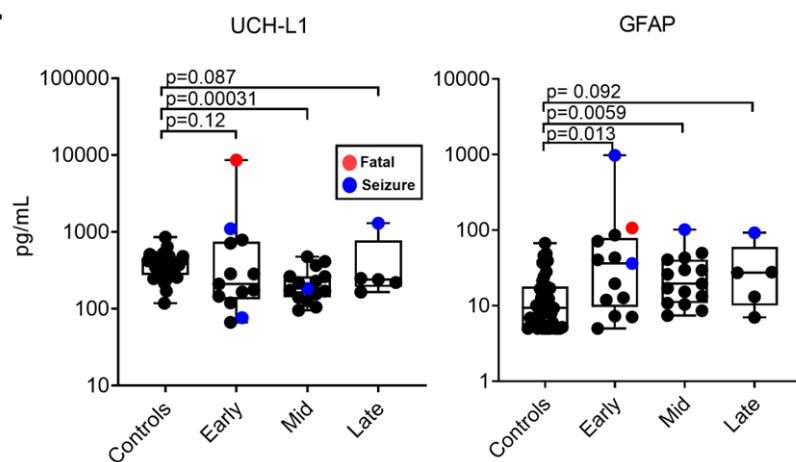
**A. Symptoms in Group 1 - Virus Infection**



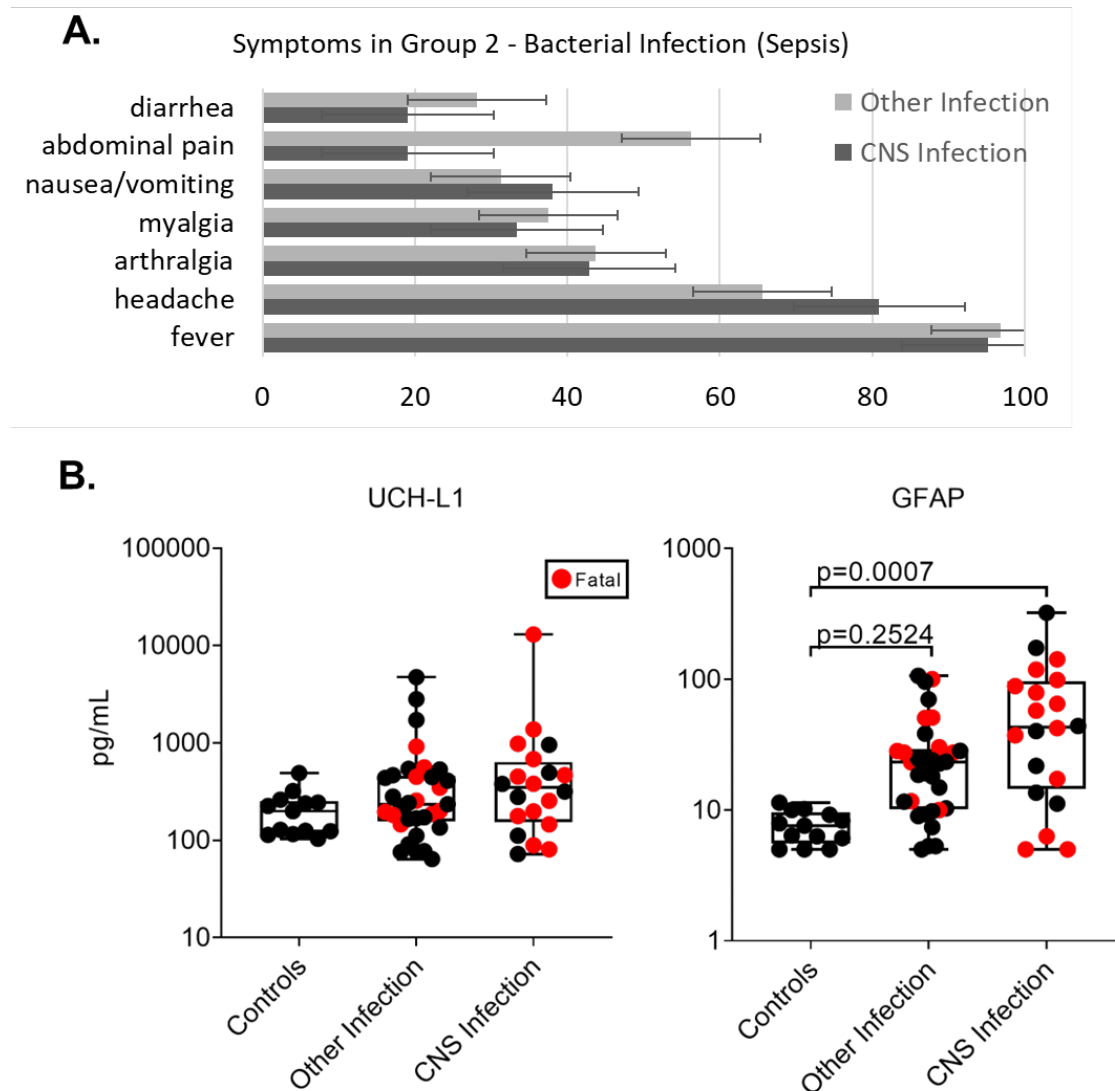
**B.**



**C.**



307 **Figure 1.** Neurotropic alphavirus exposure cases in Panama from the group 1 virus infection  
308 study population. A) (n = 31) were grouped based on antibody reactivity to MADV (n = 7),  
309 VEEV (n = 21), and both (n = 3). B) UCH-L1 and GFAP levels (pg/mL) in patient serum (n =  
310 33), where each point represents a single patient: MADV (n = 8), VEEV (n = 22), both (n = 3)  
311 and negative (n = 40). Blue points represent patients with seizures (n = 4), and red indicates  
312 mortality (n = 1). Comparison of analyte levels in patients grouped by positive or negative for  
313 any virus and days of clinical evolution: early (0–7), mid (8–14), late (>15) for C) UCH-L1 and  
314 GFAP (pg/mL). Blue points represent patients with seizures (n = 4), and red indicates mortality  
315 (n = 1). Statistical significance is based on Mann-Whitney U test vs. negative controls for both  
316 viruses.



317

318 **Figure 2.** Severe, hospitalized acute febrile illness cases in Ghana and Cambodia with or without

319 CNS involvement in the group 2 bacterial sepsis cohort. A) Patient-reported symptoms were

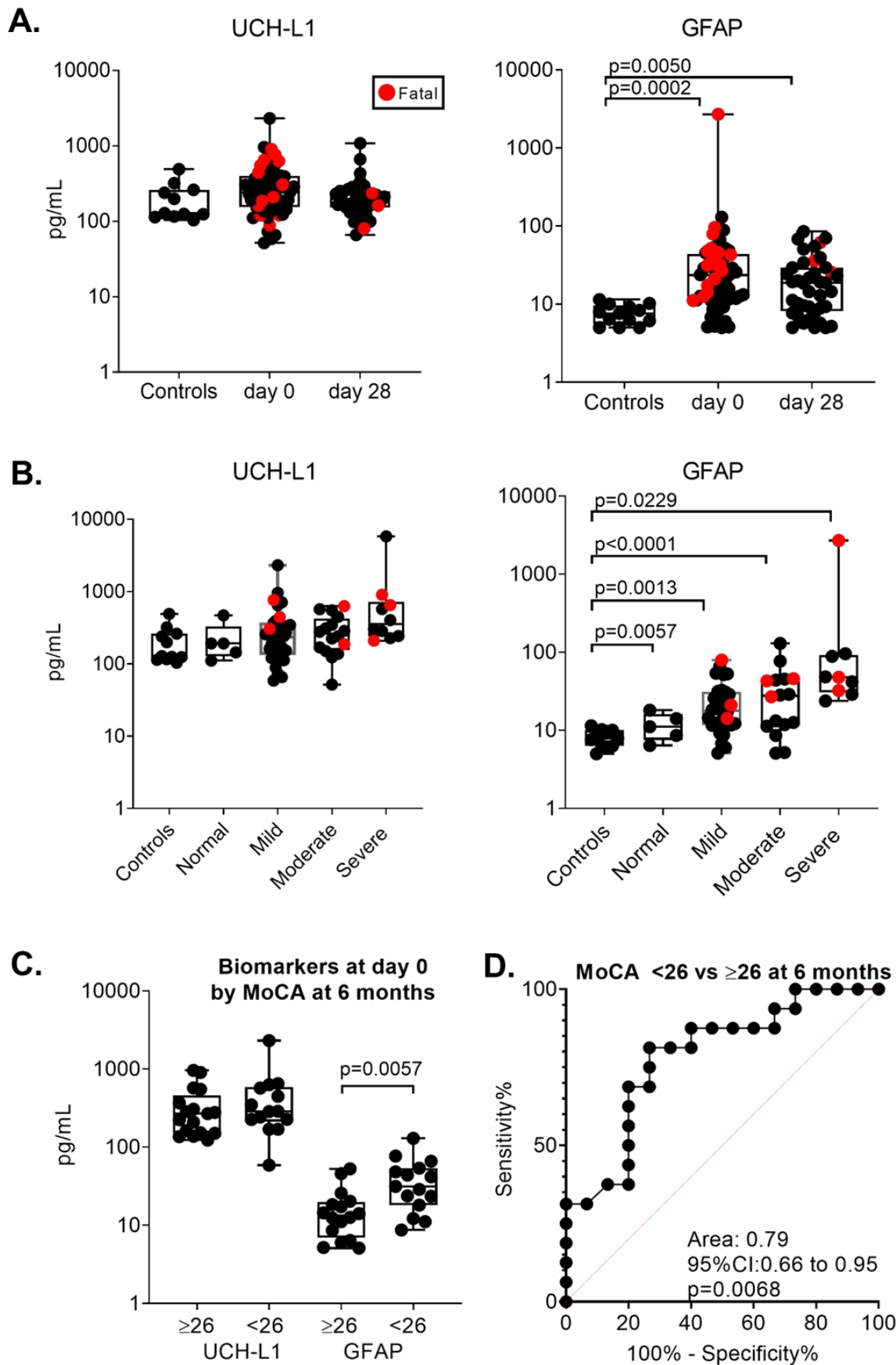
320 grouped based on the clinical designation of CNS infection determined by two physicians. B)

321 UCH-L1 and GFAP levels (pg/mL) grouped by CNS, other, or controls. Statistical significance is

322 based on comparison biomarker values at corresponding time points using Mann-Whitney U test

323 vs. healthy controls.

324



326 **Figure 3.** Longitudinal study of group 3 severe bacterial sepsis with cognitive assessment. A)  
327 UCH-L1 and GFAP levels (pg/mL) in patient sera from Ghana and Cambodia grouped by study  
328 enrollment (day 0) or day 28 post enrollment compared to controls. B) UCH-L1 and GFAP  
329 (pg/mL) levels in sera from patients grouped by the average MoCA severity score at discharge  
330 and up to six months later. Statistical significance is based on values at corresponding time  
331 points using Mann-Whitney U test vs. controls. No MoCA surveys were obtained from controls.  
332 C) Comparison of UCH-L1 and GFAP between patients with normal ( $\geq 26$ ) or impaired ( $< 26$ )  
333 MoCA severity scores at six months post enrollment. D) AUC analysis of the predictive value of  
334 GFAP at study enrollment to impaired cognitive function six months later.

### 335 **Authors' contributions**

336 ML Bartlett, DR Smith, and A Vittor had full access to the study data and take full responsibility  
337 for the integrity and accuracy of this analysis. Concept and design: ML Bartlett, DR Smith, A  
338 Vittor, R Hayes; Data acquisition, analysis, and interpretation: ML Bartlett, DR Smith, A Vittor,  
339 R Hayes, JP Carrera, LF Rivera, C Lezcano-Coba, J Galue, KL Schully, M Gregory, J  
340 Brandsma, JG Chenoweth, DV Clark; Laboratory analysis: DR Smith, J Linwood, H Goux, JP  
341 Carrera, C Lezcano-Coba and J Galue; Drafting of the manuscript: ML Bartlett, DR Smith; KL  
342 Schully, JG Chenoweth, R Hayes, JP Carrera; Statistical analysis: ML Bartlett, A Vittor, J  
343 Brandsma.

### 344 **Funding**

345 The funder was not involved in the study design, analysis, and interpretation of data, writing of  
346 the report, or the decision to submit the study results for publication.

### 347 **Declaration Competing of Interest**

348 The authors of this manuscript have no conflicts of interest to disclose.

## 349 Acknowledgments

350 This study was supported by the Defense Threat Reduction Agency under project number  
351 CB10937 to DRS and grant number FID-2021-96 SENACYT to JPC. The views expressed in  
352 this work reflect the results of research conducted by the authors and do not necessarily reflect  
353 the official policy or position of the Department of Defense, the Navy, or the United States  
354 Government. Several of the authors are U.S. Government employees. This work was prepared as  
355 part of their official duties. Title 17, U.S.C., § 105 provides that copyright protection under this  
356 title is not available for any work of the U.S. Government. Title 17 U.S.C., § 101 defines a U.S.  
357 Government work as work prepared by a military Service member or employee of the U.S.  
358 Government as part of that person's official duties.

## 359 References

- 360 1. McGill F GM, Bonnett LJ, Geretti AM, Michael BD, Beeching NJ, McKee D, Scarlett P, Hart IJ,  
361 Mutton KJ, Jung A, Adan G, Gummery A, Sulaiman WAW, Ennis K, Martin AP, Haycox A, Miller  
362 A, Solomon T; UK 2018. Meningitis Study Investigators. Incidence, aetiology, and sequelae of  
363 viral meningitis in UK adults: a multicentre prospective observational cohort study. . *Lancet Infect*  
364 *Dis* doi: doi: 10.1016/S1473-3099(18)30245-7. .
- 365 2. Bazarian JJ, Biberthaler P, Welch RD, Lewis LM, Barzo P, Bogner-Flatz V, Gunnar Brodinson P,  
366 Buki A, Chen JY, Christenson RH, Hack D, Huff JS, Johar S, Jordan JD, Leidel BA, Lindner T,  
367 Ludington E, Okonkwo DO, Ornato J, Peacock WF, Schmidt K, Tyndall JA, Vossough A, Jagoda  
368 AS. 2018. Serum GFAP and UCH-L1 for prediction of absence of intracranial injuries on head CT  
369 (ALERT-TBI): a multicentre observational study. *Lancet Neurol* 17:782-789.
- 370 3. Abdelhak A, Foschi M, Abu-Rumeileh S, Yue JK, D'Anna L, Huss A, Oeckl P, Ludolph AC, Kuhle  
371 J, Petzold A, Manley GT, Green AJ, Otto M, Tumani H. 2022. Blood GFAP as an emerging  
372 biomarker in brain and spinal cord disorders. *Nat Rev Neurol* 18:158-172.
- 373 4. Biernacki T, Kokas Z, Sandi D, Füvesi J, Friczka-Nagy Z, Faragó P, Kincses TZ, Klivényi P,  
374 Bencsik K, Vécsei L. 2022. Emerging Biomarkers of Multiple Sclerosis in the Blood and the CSF:  
375 A Focus on Neurofilaments and Therapeutic Considerations. *International journal of molecular*  
376 *sciences* 23:3383.
- 377 5. Kim H, Lee E-J, Lim Y-M, Kim K-K. 2022. Glial Fibrillary Acidic Protein in Blood as a Disease  
378 Biomarker of Neuromyelitis Optica Spectrum Disorders. *Frontiers in Neurology* 13.
- 379 6. O'Connor A, Abel E, Benedet AL, Poole T, Ashton N, Weston PSJ, Heslegrave AJ, Ryan N, Barker  
380 S, Polke JM, Blennow K, Zetterberg H, Fox NC. 2023. Plasma GFAP in presymptomatic and  
381 symptomatic familial Alzheimer's disease: a longitudinal cohort study. *J Neurol Neurosurg*  
382 *Psychiatry* 94:90-92.
- 383 7. Chatterjee P, Pedrini S, Stoops E, Goozee K, Villemagne VL, Asih PR, Verberk IMW, Dave P,  
384 Taddei K, Sohrabi HR, Zetterberg H, Blennow K, Teunissen CE, Vanderstichele HM, Martins RN.

- 385 2021. Plasma glial fibrillary acidic protein is elevated in cognitively normal older adults at risk of  
386 Alzheimer's disease. *Translational Psychiatry* 11:27.
- 387 8. Gong B, Leznik E. 2007. The role of ubiquitin C-terminal hydrolase L1 in neurodegenerative  
388 disorders. *Drug News Perspect* 20:365-70.
- 389 9. Cooper J, Stukas S, Hoiland RL, Fergusson NA, Thiara S, Foster D, Mitra A, Stoessl JA, Panenka  
390 WJ, Sekhon MS, Wellington CL. 2020. Quantification of Neurological Blood-Based Biomarkers  
391 in Critically Ill Patients With Coronavirus Disease 2019. *Crit Care Explor* 2:e0238.
- 392 10. de Menezes EGM, Liu JS, Bowler SA, Giron LB, D'Antoni ML, Shikuma CM, Abdel-Mohsen M,  
393 Ndhlovu LC, Norris PJ. 2022. Circulating brain-derived extracellular vesicles expressing  
394 neuroinflammatory markers are associated with HIV-related neurocognitive impairment. *Front*  
395 *Immunol* 13:1033712.
- 396 11. Carrera JP, Pitti Y, Molares-Martinez JC, Casal E, Pereyra-Elias R, Saenz L, Guerrero I, Galue J,  
397 Rodriguez-Alvarez F, Jackman C, Pascale JM, Armien B, Weaver SC, Donnelly CA, Vittor AY.  
398 2020. Clinical and Serological Findings of Madariaga and Venezuelan Equine Encephalitis Viral  
399 Infections: A Follow-up Study 5 Years After an Outbreak in Panama. *Open Forum Infect Dis*  
400 7:ofaa359.
- 401 12. Arrigo NC, Adams AP, Weaver SC. 2010. Evolutionary patterns of eastern equine encephalitis  
402 virus in North versus South America suggest ecological differences and taxonomic revision. *J Virol*  
403 84:1014-25.
- 404 13. Carrera JP, Forrester N, Wang E, Vittor AY, Haddow AD, López-Vergès S, Abadía I, Castaño E,  
405 Sosa N, Báez C, Estripeaut D, Díaz Y, Beltrán D, Cisneros J, Cedeño HG, Travassos da Rosa AP,  
406 Hernandez H, Martínez-Torres AO, Tesh RB, Weaver SC. 2013. Eastern equine encephalitis in  
407 Latin America. *N Engl J Med* 369:732-44.
- 408 14. Carrera JP, Cucunubá ZM, Neira K, Lambert B, Pitti Y, Liscano J, Garzón JL, Beltran D, Collado-  
409 Mariscal L, Saenz L, Sosa N, Rodriguez-Guzman LD, González P, Lescano AG, Pereyra-Elias R,  
410 Valderrama A, Weaver SC, Vittor AY, Armien B, Pascale JM, Donnelly CA. 2020. Endemic and  
411 Epidemic Human Alphavirus Infections in Eastern Panama: An Analysis of Population-Based  
412 Cross-Sectional Surveys. *Am J Trop Med Hyg* 103:2429-2437.
- 413 15. Yan X, Yang K, Xiao Q, Hou R, Pan X, Zhu X. 2022. Central role of microglia in sepsis-associated  
414 encephalopathy: From mechanism to therapy. *Frontiers in Immunology* 13.
- 415 16. Mazeraud A, Righy C, Bouchereau E, Benghanem S, Bozza FA, Sharshar T. 2020. Septic-  
416 Associated Encephalopathy: a Comprehensive Review. *Neurotherapeutics* 17:392-403.
- 417 17. Li Y, Ji M, Yang J. 2022. Current Understanding of Long-Term Cognitive Impairment After Sepsis.  
418 *Front Immunol* 13:855006.
- 419 18. Iwashyna TJ, Ely EW, Smith DM, Langa KM. 2010. Long-term cognitive impairment and  
420 functional disability among survivors of severe sepsis. *Jama* 304:1787-94.
- 421 19. Blair PW, Mehta R, Oppong CK, Tin S, Ko E, Tsalik EL, Chenoweth J, Rozo M, Adams N, Beckett  
422 C, Woods CW, Striegel DA, Salvador MG, Brandsma J, McKean L, Mahle RE, Hulsey WR,  
423 Krishnan S, Prouty M, Letizia A, Fox A, Faix D, Lawler JV, Duplessis C, Gregory MG, Vantha T,  
424 Owusu-Ofori AK, Ansong D, Oduro G, Schully KL, Clark DV. 2023. Screening tools for predicting  
425 mortality of adults with suspected sepsis: an international sepsis cohort validation study. *BMJ Open*  
426 13:e067840.
- 427 20. Rozo M, Schully KL, Philipson C, Fitkariwala A, Nhim D, Som T, Sieng D, Huot B, Dul S, Gregory  
428 MJ, Heang V, Vaughn A, Vantha T, Prouty AM, Chao CC, Zhang Z, Belinskaya T, Voegtly LJ,  
429 Cer RZ, Bishop-Lilly KA, Duplessis C, Lawler JV, Clark DV. 2020. An Observational Study of  
430 Sepsis in Takeo Province Cambodia: An in-depth examination of pathogens causing severe  
431 infections. *PLoS Negl Trop Dis* 14:e0008381.
- 432 21. Julayanont P, Tangwongchai S, Hemrungronj S, Tunvirachaisakul C, Phanthumchinda K,  
433 Hongsawat J, Suwichanarakul P, Thanasirorat S, Nasreddine ZS. 2015. The Montreal Cognitive  
434 Assessment-Basic: A Screening Tool for Mild Cognitive Impairment in Illiterate and Low-  
435 Educated Elderly Adults. *J Am Geriatr Soc* 63:2550-2554.



- 436 22. Eng LF, Ghirnikar RS, Lee YL. 2000. Glial fibrillary acidic protein: GFAP-thirty-one years (1969-  
437 2000). *Neurochem Res* 25:1439-51.
- 438 23. Mondello S, Jeromin A, Buki A, Bullock R, Czeiter E, Kovacs N, Barzo P, Schmid K, Tortella F,  
439 Wang KK, Hayes RL. 2012. Glial neuronal ratio: a novel index for differentiating injury type in  
440 patients with severe traumatic brain injury. *J Neurotrauma* 29:1096-104.
- 441 24. Mondello S, Papa L, Buki A, Bullock MR, Czeiter E, Tortella FC, Wang KK, Hayes RL. 2011.  
442 Neuronal and glial markers are differently associated with computed tomography findings and  
443 outcome in patients with severe traumatic brain injury: a case control study. *Crit Care* 15:R156.
- 444 25. DeKosky ST, Kochanek PM, Valadka AB, Clark RSB, Chou SH, Au AK, Horvat C, Jha RM,  
445 Mannix R, Wisniewski SR, Wintermark M, Rowell SE, Welch RD, Lewis L, House S, Tanzi RE,  
446 Smith DR, Vittor AY, Denslow ND, Davis MD, Glushakova OY, Hayes RL. 2021. Blood  
447 Biomarkers for Detection of Brain Injury in COVID-19 Patients. *J Neurotrauma* 38:1-43.
- 448 26. Teunissen CE, Rohlwink U, Pajkrt D, Naudé PJW. 2022. Biomarkers of Tuberculous Meningitis  
449 and Pediatric Human Immunodeficiency Virus on the African Continent. *Front Neurol* 13:793080.
- 450 27. Rohlwink UK, Figaji AA. 2014. Biomarkers of Brain Injury in Cerebral Infections. *Clinical*  
451 *Chemistry* 60:823-834.
- 452 28. Grahn A, Hagberg L, Nilsson S, Blennow K, Zetterberg H, Studahl M. 2013. Cerebrospinal fluid  
453 biomarkers in patients with varicella-zoster virus CNS infections. *J Neurol* 260:1813-21.
- 454 29. Abdelhak A, Foschi M, Abu-Rumeileh S, Yue JK, D'Anna L, Huss A, Oeckl P, Ludolph AC, Kuhle  
455 J, Petzold A, Manley GT, Green AJ, Otto M, Tumani H. 2022. Blood GFAP as an emerging  
456 biomarker in brain and spinal cord disorders. *Nature Reviews Neurology* 18:158-172.
- 457 30. Constant O, Barthelemy J, Nagy A, Salinas S, Simonin Y. 2022. West Nile Virus Neuroinfection  
458 in Humans: Peripheral Biomarkers of Neuroinflammation and Neuronal Damage. *Viruses* 14.
- 459 31. Zhang LN, Wang XT, Ai YH, Guo QL, Huang L, Liu ZY, Yao B. 2012. Epidemiological features  
460 and risk factors of sepsis-associated encephalopathy in intensive care unit patients: 2008-2011.  
461 *Chin Med J (Engl)* 125:828-31.
- 462 32. Tang C, Zhou, W., Chen, X. et al. . 2023. Research Progress of Biomarkers of Sepsis-Associated  
463 Encephalopathy. *Intensive Care Research* 3:69-76.
- 464 33. Wu L, Ai ML, Feng Q, Deng S, Liu ZY, Zhang LN, Ai YH. 2019. Serum glial fibrillary acidic  
465 protein and ubiquitin C-terminal hydrolase-L1 for diagnosis of sepsis-associated encephalopathy  
466 and outcome prognostication. *J Crit Care* 52:172-179.
- 467 34. Yan S, Gao M, Chen H, Jin X, Yang M. 2019. [Expression level of glial fibrillary acidic protein  
468 and its clinical significance in patients with <sup>[1]</sup>sepsis-associated encephalopathy]. *Zhong Nan Da*  
469 *Xue Xue Bao Yi Xue Ban* 44:1137-1142.
- 470 35. de la Monte S, Castro F, Bonilla NJ, Gaskin de Urdaneta A, Hutchins GM. 1985. The systemic  
471 pathology of Venezuelan equine encephalitis virus infection in humans. *Am J Trop Med Hyg*  
472 34:194-202.
- 473 36. Steele KE, Twenhafel NA. 2010. REVIEW PAPER: pathology of animal models of alphavirus  
474 encephalitis. *Vet Pathol* 47:790-805.
- 475 37. Garen PD, Tsai TF, Powers JM. 1999. Human eastern equine encephalitis: immunohistochemistry  
476 and ultrastructure. *Mod Pathol* 12:646-52.
- 477 38. Peng BH, Borisevich V, Popov VL, Zacks MA, Estes DM, Campbell GA, Paessler S. 2013.  
478 Production of IL-8, IL-17, IFN-gamma and IP-10 in human astrocytes correlates with alphavirus  
479 attenuation. *Vet Microbiol* 163:223-34.
- 480 39. Schoneboom BA, Fultz MJ, Miller TH, McKinney LC, Grieder FB. 1999. Astrocytes as targets for  
481 Venezuelan equine encephalitis virus infection. *J Neurovirol* 5:342-54.
- 482 40. Ronca SE, Dineley KT, Paessler S. 2016. Neurological Sequelae Resulting from Encephalitic  
483 Alphavirus Infection. *Front Microbiol* 7:959.