

# Are aortic biomechanical properties early markers of dilatation in patients with Marfan Syndrome? – A Systematic Review and Meta-Analysis

Claire Rosnel<sup>1</sup>, Raphael Sivera<sup>2</sup>, Elena Cervi<sup>3</sup>, Mark Danton<sup>4,5</sup>, Silvia Schievano<sup>2</sup>, Claudio Capelli<sup>2</sup>, and Ankush Aggarwal<sup>1,\*</sup>

<sup>1</sup>*Glasgow Computational Engineering Centre, James Watt School of Engineering, University of Glasgow, Glasgow, Scotland, UK*

<sup>2</sup>*Institute of Cardiovascular Science, University College London, London, England, UK*

<sup>3</sup>*Centre for Inherited Cardiovascular Diseases, Great Ormond Street Hospital for Children, NHS Foundation Trust, London, England, UK*

<sup>4</sup>*Department of Paediatric Cardiac Services, Royal Hospital for Children, Glasgow, Scotland, UK*

<sup>5</sup>*School of Cardiovascular & Metabolic Health, University of Glasgow, Glasgow, Scotland, UK*

\**For correspondence, email: [ankush.aggarwal@glasgow.ac.uk](mailto:ankush.aggarwal@glasgow.ac.uk)*

## Abstract

**Background:** Although the stiffness of tissue is known to play an important role in aortic dilatation, the current guidelines for offering a preventative aortic surgery in patients with Marfan syndrome rely solely on the aortic diameter. In this systematic review and meta-analysis, we analyze and compare literature on in-vivo aortic stiffness measurements in Marfan patients. Our aim is to assess the potential of these measurements as early indicators of aortic dilatation.

**Methods:** Following the PRISMA guidelines, we collected literature on diameter and three in-vivo stiffness measures: Pulse Wave Velocity (PWV),  $\beta$ -stiffness index and Distensibility, at five different aortic locations in patients with Marfan syndrome. Reported results were reviewed and compared against each other. For meta-analysis, an augmented dataset was created by combining extracted data from the reviewed literature. Regression with respect to age and statistical comparison were performed on the augmented dataset for all three measures at five different locations.

**Results:** 30 articles reporting data from 1925 patients with Marfan and 836 patients without Marfan were reviewed. PWV was found to be statistically higher in Marfan at most aortic locations, but only when the aorta is already dilated. Distensibility was found to be lower at all aortic locations even in non-dilated aortas, and its decrease has been associated with higher chances of developing aortic dilatation.  $\beta$ -stiffness index was higher in Marfan patients and was positively correlated with the rate of aortic dilatation, emphasizing its role as a valuable indicator. In our meta-analysis based on a total 1197 datapoints, diameter was found to be higher only at the root ( $p < 0.001$ ). All stiffness measures showed a significant variation with age. PWV at the root and carotid-femoral region was not statistically different ( $p = 0.62$  and  $p = 0.14$  respectively), but was positively correlated with age at all locations. Distensibility and  $\beta$ -stiffness index were different in Marfan patients at all locations, and the difference was more pronounced after accounting for age-related variation.

**Conclusion:** Based on the results in the literature,  $\beta$ -stiffness index and distensibility emerge as the best predictors of future aortic dilatation. Our meta-analysis quantifies age-related changes in aortic stiffness and highlights the importance of accounting for age in comparing these measurements. Missing diameter values in the literature limited our analysis. Further analysis based on combined aortic stiffness and diameter criteria is recommended to evaluate aortic disease in a comprehensive way and assist clinical decisions for prophylactic surgery.

**Keywords:** Marfan syndrome; In-vivo stiffness; Aorta; Pulse wave velocity (PWV); Distensibility,  $\beta$ -stiffness index

## 42 1 Introduction

43 Marfan Syndrome (MFS) is a heritable connective tissue disorder caused by a mutation of the fibrillin-1 gene (FBN1).  
44 The FBN1 mutation increases the fragmentation of elastic fibers in the aortic media, leading to compromised strength  
45 and structure of the tissue [1]. As a consequence, MFS exposes patients to higher risks of aortic diseases such as  
46 dilatation, dissection and rupture due to stiffening of the vessel's walls. 50% of undiagnosed and untreated MFS  
47 patients die by the age of 40 due to cardiovascular complications [2]. Early diagnosis via cardiovascular imaging is  
48 thus crucial for suspected Marfan patients, and close monitoring is essential for confirmed patients. Echocardiograms  
49 and Magnetic resonance imaging (MRI) are examples of imaging procedures conducted to evaluate changes in aortic  
50 size and expansion rate. The current 2022 ACC/AHA clinical guidelines for preventive surgical intervention is  
51 largely based on the aortic root diameter with a threshold at 50mm, or 45mm in patients with increased risks of  
52 aortic dissection [3]. Surgery is also recommended when the cross-sectional aortic root area to patient height ratio  
53 is greater than 10 cm<sup>2</sup>/m. However, dissection and rupture are known to occur below these thresholds [4, 5, 6], and  
54 diameter alone may not fully account for the biomechanical properties of aortic tissue, which are expected to play  
55 an important role in aneurysm progression and adverse events. While only diameter is currently used to predict  
56 risks of dissection and rupture, aortic stiffness emerges as a predictor of aortic dilatation, offering insights into the  
57 probability of adverse events.

58 Considerable research has focused on investigating how biomechanical properties of the aorta can be early predic-  
59 tors of dilatation using in-vivo measures of aortic stiffness, namely 1) pulse wave velocity (PWV), 2) distensibility,  
60 and 3)  $\beta$ -stiffness index. Although some results have shown that aortic stiffness measured in-vivo may perform  
61 better than diameter assessment to predict aneurysmal growth, no consensus has been established on what stiffness  
62 indicator to use, which aortic segment to consider, how it differs from healthy patients, and how the differences evolve  
63 with age.

64 This systematic review of the literature therefore aims at gathering published research studies that report aortic  
65 stiffness using PWV, distensibility and  $\beta$ -stiffness index in patients with Marfan syndrome and healthy patients.  
66 A comprehensive analysis of their correlation with age, and their potential as early indicators of aortic dilatation  
67 is conducted. In addition, to overcome variations in individual studies, we aim to create a larger, consolidated  
68 dataset from the selected studies and perform a meta-analysis to determine age- and disease-related variations and  
69 differences.

## 70 2 Methods

71 The following systematic review adheres to the Preferred Reporting Items for Systematic Reviews and Meta-analyses  
72 (PRISMA) recommendations and guidance [7]. In this section, the eligibility and search criteria necessary for the  
73 identification and selection of relevant published studies are defined. The data extraction and augmentation process,  
74 as well as the statistical techniques used to conduct the meta-analysis are also described.

### 75 2.1 Inclusion criteria, information sources and search strategy

76 Studies focusing on one or more of the three clinically established aortic stiffness measures - PWV, distensibility and  
77  $\beta$ -stiffness index - were selected for patients diagnosed with MFS. Regarding the diagnosis of MFS, the revised Ghent  
78 criteria is the most widely accepted since its proposition in 1996 [8]. Therefore, only the studies published between  
79 1996 and September 2022 were included. Cohort studies, cross-sectional studies, case-control studies, and case series  
80 were considered, whereas conference abstracts, book chapters, case reports, reviews, editorials, expert opinions and  
81 letters were excluded. The review focused on early signs of dilatation, and thus excluded papers investigating severe  
82 complications such as dissection and rupture. Articles focusing on the following aspects were also excluded: effect of  
83 medication on aortic stiffness, ex-vivo mechanical characterization, cellular scale investigations, and effect of aortic  
84 curvature on its mechanical behavior. Additionally, the review was restricted to publications in the English language.

85 Two electronic databases, PubMed and ScienceDirect, were screened to find publications based on the inclusion  
86 criteria. A time filter was applied to encompass research published between 1996 and September 2022. Between May  
87 2022 and September 2022, the databases were searched using the following MeSH terms: 'Aortic' AND 'Stiffness'  
88 AND 'Marfan',

## 2.2 Clinical metrics of aortic stiffness

Stiffness refers to the ability of a material to withstand deformation under an applied force. The in-vivo stiffness of arteries is influenced by their geometry and the biomechanical properties of the tissue. In this section, we define the three in-vivo parameters that are used in this review to quantify aortic stiffness.

- PWV is defined as the speed of the pressure waveform over a designated portion of a vessel. Higher PWV values indicate a wave that travels faster along the arterial segment, generally a consequence of stiffer tissue. The wave is detected using pressure transducers or Doppler echocardiography, and its travel time, called transit time, is measured by estimating the time of travel of the foot of the wave over a known arterial distance. The pulse wave velocity is therefore calculated as the distance between two chosen points divided by the transit time,

$$\text{PWV} = \frac{\text{Distance}}{\text{Transit time}}. \quad (1)$$

- Distensibility ( $Dist$ ) is directly calculated on in-vivo images. It is defined as the relative change in a vessel's luminal area for a unit pressure increment. Thus, a lower distensibility value indicates stiffer tissue. From in-vivo images, the arterial luminal area at systole and diastole, denoted as  $A_s$  and  $A_d$  respectively, are measured at a chosen location. Pressure measurements are commonly taken at the brachial artery using a sphygmomanometer cuff, where the systolic pressure (denoted as  $P_s$ ) and diastolic pressure (denoted as  $P_d$ ) are measured. Distensibility is thus calculated as

$$Dist = \frac{A_s - A_d}{A_d(P_s - P_d)}. \quad (2)$$

- The  $\beta$ -stiffness index ( $\beta$ -SI) is also derived from in-vivo image-based measurements. Higher values indicate a stiffer tissue, i.e.,  $\beta$ -SI is inversely correlated to the distensibility.  $\beta$ -SI is defined as the logarithm of the pressure ratio to relative change in diameter, and is dimensionless. The diameter in systole and diastole is measured on cross-sectional views of the aorta, and pressure using sphygmomanometer cuff.  $\beta$ -SI is calculated as

$$\beta\text{-SI} = \ln\left(\frac{P_s}{P_d}\right) \frac{D_d}{D_d - D_s}, \quad (3)$$

where  $P_s$ ,  $P_d$ ,  $D_s$  and  $D_d$  are the systolic pressure, diastolic pressure, systolic diameter and diastolic diameter, respectively.

## 2.3 Data collection process

The details of the selected papers and their full-text manuscripts were stored in a reference management software (Zotero). Information from these manuscripts was extracted, capturing the following data: publication details, overall aim of the study, study design (prospective, retrospective, multicenter, or longitudinal), cohorts' size, cohorts' mean age, imaging modality (Echocardiography (Echo) or Magnetic Resonance Imaging (MRI)), presence of diagnosed aneurysms in the cohort, and the aortic stiffness measure reported at five aortic locations: aortic root, ascending aorta (Aao), aortic arch (Arch), descending aorta (Dao), and carotid-femoral (only for PWV).

Discrepancies in results from the literature may be attributed to the specificity of the cohorts included in each individual paper, particularly factors like age and population size. Additionally, statistical tests conducted on their sampled cohorts might not be fully representative of the broader population. A meta-analysis was therefore sought on the following quantities of interest: PWV, distensibility,  $\beta$ -stiffness index, diameter, and age. The aim was to perform a comprehensive statistical analysis by treating the collective results from the literature as one unified dataset, and offering deeper insights than what can be derived from individual papers. The unified dataset creation required extraction of data points from selected manuscripts, but with the following exclusion criteria. For studies investigating several connective tissue disorders, measurements were excluded from the meta-analysis if Marfan data points could not be separated from others. Since the focus of this analysis is on the native biomechanical properties without any effects of surgical intervention, measurements were also rejected if results from patients who underwent an aortic surgical procedure (e.g., PEARS, Bentall procedure) were not separable from the rest of the Marfan cohort. However, data points with unknown surgical status were included under the assumption that if surgery was performed, it would be explicitly mentioned in the respective articles. Patients under medication were included since that they represent a large portion of the diagnosed Marfan population. When studies presented data separately for aneurysmal

<b>PWV</b>	$\frac{\text{Distance}}{\text{Transit time}}$	$\frac{1}{\sqrt{\rho Dist}}$	$\sqrt{\frac{(P_s - P_d)\beta\text{-SI}}{2\rho \ln\left(\frac{P_s}{P_d}\right)}}$
<b>Distensibility</b> ( <i>Dist</i> )	$\frac{1}{\rho PWV^2}$	$\frac{A_s - A_d}{A_d(P_s - P_d)}$	$\frac{2 \ln\left(\frac{P_s}{P_d}\right)}{(P_s - P_d)\beta\text{-SI}}$
<b><math>\beta</math>-stiffness index</b> ( $\beta\text{-SI}$ )	$\frac{2\rho \ln\left(\frac{P_s}{P_d}\right) PWV^2}{(P_s - P_d)}$	$\frac{2 \ln\left(\frac{P_s}{P_d}\right)}{(P_s - P_d)Dist}$	$\ln\left(\frac{P_s}{P_d}\right) \frac{D_d}{D_d - D_s}$

Table 1: Calculation equations (in gray cells) and conversion equations (in white cells) for the three aortic stiffness measures

116 and non-aneurysmal Marfan aortas, only the non-aneurysmal measurement was selected. For longitudinal studies  
 117 with several time points reported, only the baseline measurement was extracted. Finally, in papers where results  
 118 were reported per age range, the mean was calculated and collected. For articles where individual participant data  
 119 points were available, they were digitized directly from plots in the manuscript using WebPlotDigitizer [9]. In cases  
 120 where such individual data points were not provided, mean and standard deviation (*SD*) or median and interquartile  
 121 ranges (IQR) were manually extracted for each quantity.

## 122 2.4 Data augmentation process

123 In the literature, various image-based aortic stiffness measures are employed to characterize the mechanics of vascular  
 124 walls. However, the measures often use different units, leading to inconsistency and lack of standardization, as  
 125 previously pointed out by Alhalimi et al. [10]. To address this issue, our data augmentation process involved  
 126 employing standardized formulae and units, as well as conversion equations to transform one aortic stiffness index  
 127 into another. Specifically, distensibility can be converted into  $\beta$ -SI using the relative change in area  $(A_s - A_d)/A_d =$   
 128  $(D_s^2 - D_d^2)/D_d^2 \approx 2(D_s - D_d)/D_d$  where  $A_s$ ,  $A_d$ ,  $D_s$ ,  $D_d$  are systolic area, diastolic area, diameter in systole and  
 129 diameter in diastole respectively. The conversion of PWV to image-based aortic stiffness measures can be achieved  
 130 using the Bramwell-Hill equation [11]. The conversion formulae are summarized in Table 1, where  $\rho$  is the blood  
 131 density approximated to be  $1059 \text{ kg/m}^3$ . Mean values of systolic ( $P_s$ ) and diastolic pressure ( $P_d$ ) reported in the  
 132 articles were used for the calculations. It is worth noting that in cases where only the pulse pressure ( $P_s - P_d$ ) was  
 133 reported instead of systolic and diastolic pressures individually, the  $\beta$ -stiffness index could not be calculated.

In instances where individual data points were not reported, mean and standard deviation of the quantity were  
 used. However, as noted by Weir et al. [12], when results exhibit a skewed distribution, researchers often report the  
 median and interquartile ranges instead of the mean and variance information. To ensure that such cases were not  
 excluded from the analysis, missing mean and standard deviation values were calculated from the provided median  
 and interquartiles using Wan et al.'s method [13], described as follows. The mean  $\tilde{x}$  can be estimated from median  
 and interquartiles as

$$\tilde{x} \approx \frac{q_1 + m + q_3}{3}, \quad (4)$$

where  $q_1$  and  $q_3$  represent the first and third interquartiles, and  $m$  denotes the median. The standard deviation  $SD$   
 is estimated as

$$SD = \frac{q_3 - q_1}{2\Phi^{-1}\left(\frac{0.75n - 0.125}{n + 0.25}\right)}, \quad (5)$$

134 where  $\Phi$  is the cumulative distribution function of a standard normal distribution and  $n$  is the size of the cohort.

135 To summarise, the augmented dataset on which the meta-analysis is conducted consisted of three types of data:

- 136 (i) Individual patients' data points that were directly digitized and collected from plots in the manuscripts.  
 137 (ii) Mean and standard deviation values collected from the manuscripts.

- 138 (iii) Mean and standard deviation values calculated from the median and interquartiles reported in manuscripts  
139 using Wan et al.'s method [13].
- 140 (iv) Calculated values, which were generated using the conversion equations from Table 1 to transform one reported  
141 aortic stiffness measure into another.

## 142 2.5 Statistical analysis

In the meta-analysis, comparison tests between Marfan and control and linear regressions with age were performed on the augmented dataset. As stated previously, the dataset is composed of individual datapoints as well as mean and standard deviation values. In order to run statistical tests, all values were expressed as mean and SD, such that the overall means for the Marfan ( $i = M$ ) and control ( $i = C$ ) cohorts are calculated as

$$\bar{X}_i = \frac{\sum(\mu_j n_j)}{\sum n_j} \quad (6)$$

where  $\mu_j$  and  $n_j$  are the mean and size of the cohort in paper  $j$ , and the corrected sample standard deviations are calculated as

$$s_i = \frac{1}{\sum n_j - 1} \left[ \sum ((n_j - 1)\sigma_j^2 + n_j(\mu_j - \bar{X}_i)^2) \right] \quad (7)$$

143 where  $\sigma_j$  is the standard deviation in paper  $j$ .

144 Marfan and control were compared using the Welch test, which examines the null hypothesis that two populations  
145 have equivalent means. This test is favored over the Student's  $t$ -test when the two samples have unequal variances.  
146 Bonferroni correction was applied to account for multiple comparisons type two error.

147 To better understand the independent effect of Marfan syndrome on distensibility, PWV or  $\beta$ -SI and to account  
148 for age-related effects, linear regressions and projections at age-zero were conducted. To perform the regressions, the  
149 normality of the dataset was tested using Shapiro–Wilk test. Due to the lack of consistent normality in the initial  
150 data distribution, a logarithmic transformation was applied to the dataset. The association between variables and age  
151 were evaluated using the coefficient of determination ( $R^2$ ). The slope of the linear regression enables us to determine  
152 if age-related changes occur at a faster rate in Marfan patients. To investigate whether Marfan patients are born with  
153 altered stiffness or if it changes over time, log-values of the three aortic stiffness measures were projected at age-zero  
154 using the linear regression. Welch comparison tests were then run on the projected values. The projection allowed  
155 us to discern whether statistical differences between the two groups can be found once the age-related variations had  
156 been factored out. In all statistical tests, significance was considered at a  $p$ -value less than 0.05. All analyses were  
157 performed using Python and the Scipy library.

## 158 3 Results

### 159 3.1 Search results

160 The flowchart in Figure 1 illustrates the paper selection process following PRISMA guidelines. Initially, 639 published  
161 articles were identified, comprising 76 papers from PubMed, 553 from Science Direct, and 10 from reference list hand-  
162 searching. After removing duplicates, 616 papers remained, which were then assessed against exclusion/inclusion  
163 criteria by examining the title and abstract only. Among them, 572 articles were excluded, primarily for being  
164 unrelated to in-vivo measures of aortic stiffness in Marfan diagnosed patients, or for focusing on blood flow patterns.  
165 Subsequently, 44 texts were read fully, and 14 were rejected for either not using the revised Ghent criteria for MFS  
166 diagnosis [8] or for merging Marfan patients with other tissue disorders. Finally, a total of 30 papers were selected  
167 based on the eligibility criteria and search strategy mentioned in Methods section. For the meta analysis, 6 of the  
168 30 articles were excluded for not reporting Marfan data separately from others.

### 169 3.2 Characteristics of included studies

170 The review of the literature offered valuable insights into the assessment of stiffness in patients with Marfan Syndrome,  
171 as it encompassed studies from diverse sources published over a span of 20 years in ten different countries. Out of  
172 the 30 selected studies, 16 were longitudinal, providing crucial information on how stiffness evolves with age. The

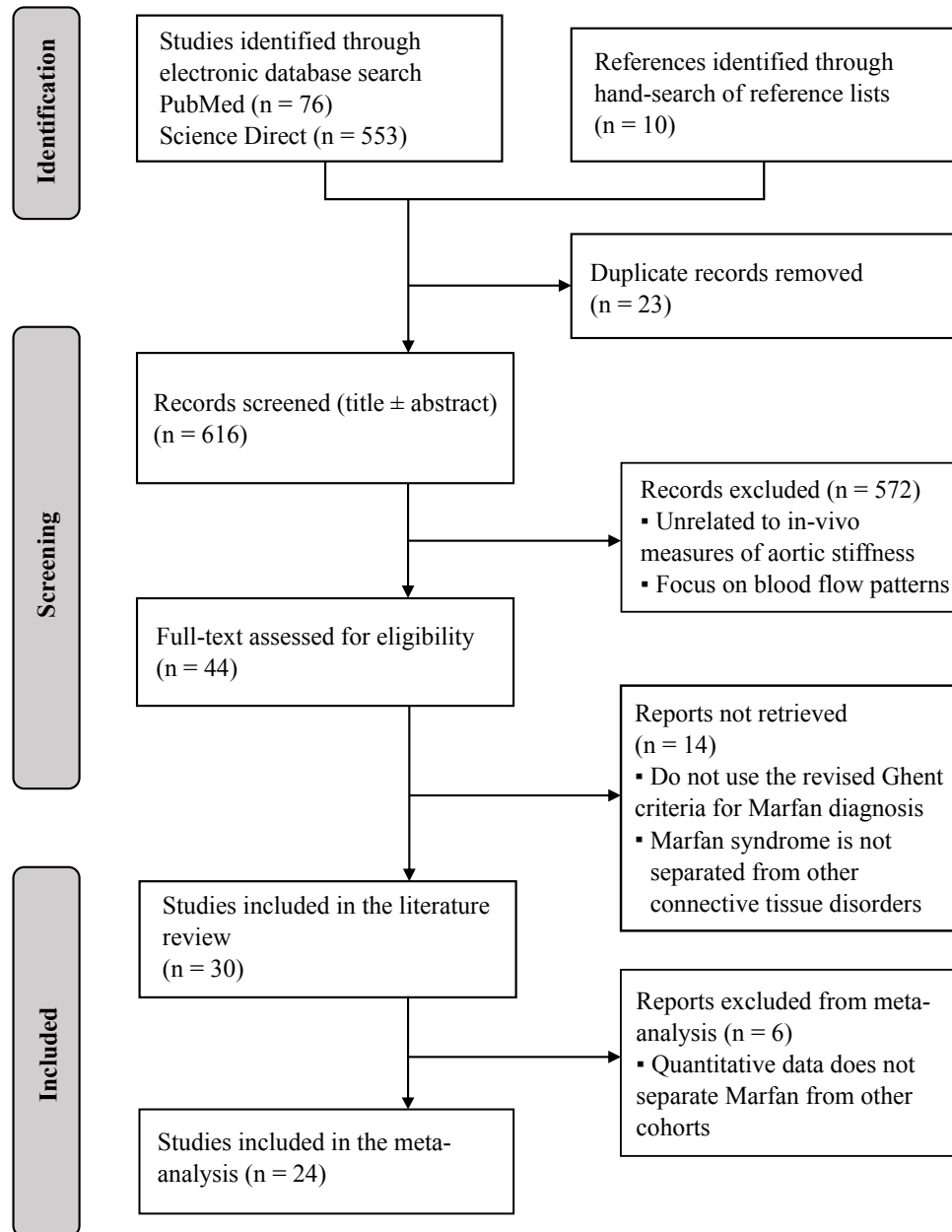


Figure 1: The flow diagram presents the process of inclusion given the eligibility criteria using the PRISMA 2020 guidelines



173 remaining 14 were case-control studies, allowing for a quantification of the differences in stiffness properties between  
 174 individuals with and without Marfan Syndrome.

175 Of the selected papers, 17 used echocardiography to monitor the size of the aorta and to calculate stiffness  
 176 measures at various aortic locations, while 13 employed MRI. Only one study by Prakash et al. [14] utilized both  
 177 imaging modalities: MRI for distensibility and  $\beta$ -SI calculation and echocardiography for monitoring the aortic size.  
 178 Table 2 provides a comprehensive overview of the included papers in the qualitative synthesis, along with their  
 179 respective main characteristics.

Table 2: Main characteristics of the 30 studies included in the systematic review and meta-analysis

Author	Country	Marfan cohort: size (mean age)	Control cohort: size (mean age)	Imaging modality	Included in the meta-analysis?	Quantity reported
Groenink et al. [15]	Netherlands	78 (31)	23 (28)	MRI	Yes	PWV, Distensibility
Sandor et al. [16]	Canada	14 (15.7)	6 (12.3)	Echo	Yes	PWV, $\beta$ -SI
Nollen et al. [17]	Netherlands	78 (31)	-	MRI	Yes	PWV, Distensibility
Baumgartner et al. [18]	Austria	19 (17.7)	19 (17.7)	Echo	Yes	Distensibility, $\beta$ -SI
Oosterhof et al. [19]	Netherlands	78 (31)	17 (44)	MRI	Yes	PWV
Bradley et al. [20]	Canada	26 (13.14)	69 (13.14)	Echo	Yes	PWV, $\beta$ -SI
Vitarelli et al. [21]	Italy	31 (26)	21 (26)	Echo	Yes	PWV, Distensibility, $\beta$ -SI
Baumgartner et al. [22]	Austria	46 (17.4)	46 (17.6)	Echo	Yes	Distensibility, $\beta$
Fattori et al. [23]	Italy	20 (27.8)	14 (29)	MRI	Yes	Distensibility
Mortensen et al. [24]	Germany	50 (32)	-	Echo	Yes	PWV
Kiotsekoglou et al. [25]	U.K	31 (31)	31 (33)	Echo	Yes	PWV, $\beta$ -SI
Westenberg et al. [26]	Netherlands	25 (36)	25 (36)	MRI	Yes	PWV
Wit et al. [27]	Australia	55 (40.5)	69 (41.35)	Echo	Yes	PWV, distensibility, $\beta$ -SI
Kröner et al. [28]	Netherlands	21 (36)	26 (30)	MRI	Yes	PWV
Teixido-Tura et al. [29]	Spain	80 (32)	36 (35.2)	MRI	Yes	PWV, Distensibility
Prakash et al. [14]	U.S	45 (27)	-	Echo, MRI	No	Distensibility, $\beta$ -SI
Akazawa et al. [30]	Japan	26 (15)	-	Echo	No	Distensibility, $\beta$ -SI
Singh et al. [31]	U.S	15 (36.9)	10 (42.9)	MRI	No	$\beta$ -SI
Merlocco et al. [32]	U.S	26 (25.11)	-	MRI	No	Distensibility, $\beta$ -SI

Grillo et al. [33]	Italy	51 (12)	80 (11.9)	Echo	Yes	PWV
Salvi et al. [34]	Italy	116 (33.7)	-	Echo	Yes	PWV
Selamet Tierney et al. [35]	U.S	608 (11.2)	-	Echo	No	Distensibility, $\beta$ -SI
Schäfer et al. [36]	U.S	20 (18)	22 (15)	MRI	Yes	PWV, Distensibility
Guala et al. [37]	Spain	117 (25.3)	-	MRI	Yes	Distensibility
Yan et al. [38]	Germany	69 (34.43)	90 (67.27)	Echo	Yes	Distensibility, $\beta$ -SI
Guala et al. [39]	Spain	44 (36.95)	36 (39.40)	MRI	Yes	PWV, Distensibility
Cui et al. [40]	Canada	49 (17.9)	87 (18.20)	Echo	Yes	PWV, $\beta$ -SI
Andel et al. [41]	Netherlands	35 (28)	-	MRI	Yes	Distensibility
Weismann et al. [42]	Sweden	20 (22)	67 (25)	Echo	Yes	PWV, Distensibility, $\beta$ -SI
Cox et al. [43]	U.S	32 (21.1)	-	Echo	Yes	Distensibility, $\beta$ -SI

180 In total, the review included data from 1925 patients with MFS and 836 patients without MFS, treated as  
 181 controls, with mean age of participants ranging from 2 to 90 years old. A considerable fraction of the papers (10  
 182 out of 30) exclusively reported data for the Marfan cohort and did not include control data. As shown on Figure 2,  
 183 diameter was primarily reported at the root and ascending aorta, with only about a third of the studies comparing  
 184 Marfan and control groups. In contrast, PWV was predominantly reported in the ascending part of the aorta, with  
 185 only one study that considered controls in the descending aorta (Dao) and another in the abdominal aorta (Abao).  
 186 Distensibility was mostly reported in the ascending aorta, but only about a third of the papers included control data  
 187 for comparison. The  $\beta$ -stiffness index was mainly reported in the root and ascending aorta.

188 In Figure 3, the size of the Marfan cohort is depicted in relation to their age. The horizontal bars displayed  
 189 represent mean  $\pm$  SD for each paper. Most of the articles encompassed cohorts with less than 60 patients, with age  
 190 ranges spanning from pediatrics to 50 years old. Only three studies exceeded 100 participants and none of them  
 191 included controls in their analysis.

### 192 3.3 Main findings from the selected papers

#### 193 3.3.1 Aortic diameter is the standard measure to compare Marfan and control

194 Among the 30 selected papers, 14 compared the diameter at the root between Marfan and control cohorts, 14 at  
 195 the ascending aorta, and 3 at the descending aorta. Table 3 summarizes the results of these comparisons. The  
 196 findings from these studies indicated significant differences in aortic size between the two groups. Notably, all papers  
 197 reported a larger aortic root in Marfan patients, irrespective of the age of the cohort or correction for Body-Surface-  
 198 Area (BSA). 10 studies found that the ascending aorta (Aao) was larger in Marfan patients, and 5 studies found no  
 199 statistical difference in the diameters of the descending aorta (Dao).

#### 200 3.3.2 PWV is higher in Marfan patients, but only with dilated aortas

201 Among the selected studies, 7 compared PWV at the Aao between Marfan and control cohorts, 8 examined PWV  
 202 at the arch, 7 in the descending aorta, and 5 from carotid to femoral (Table 3). Consistently, a significantly higher  
 203 PWV was observed in all aortic regions from proximal to distal, as well as from carotid to femoral, in MFS patients.  
 204 These differences remained valid even after adjusting for age and diameter. This finding highlights the presence of  
 205 increased aortic stiffness in MFS patients across various regions of the aorta. However, in Oosterhof et al. [19] study,  
 206 after correcting for age and diameter for the ascending aorta, no significant difference in PWV was observed between  
 207 adult patients with and without Marfan Syndrome.



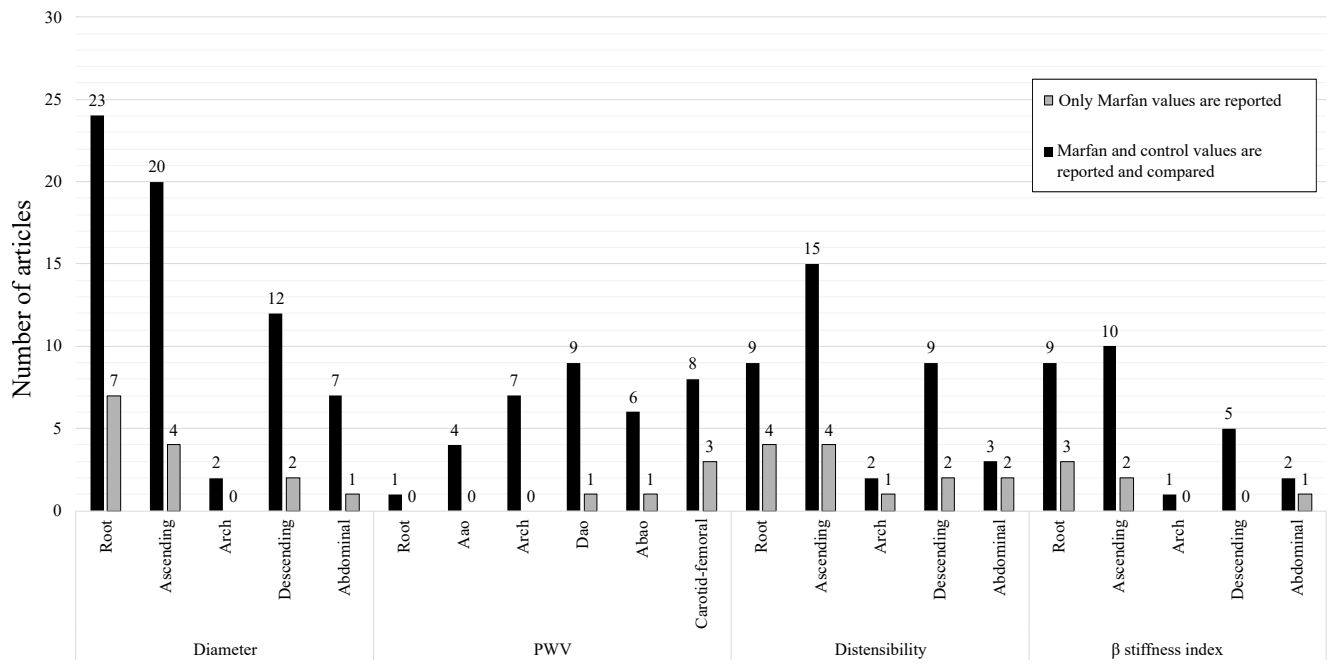


Figure 2: Number of articles reporting diameter, PWV, distensibility and  $\beta$  stiffness index at various locations. Black bars represent papers reporting only Marfan data, and gray bars represent papers including a control cohort and comparing results to Marfan.

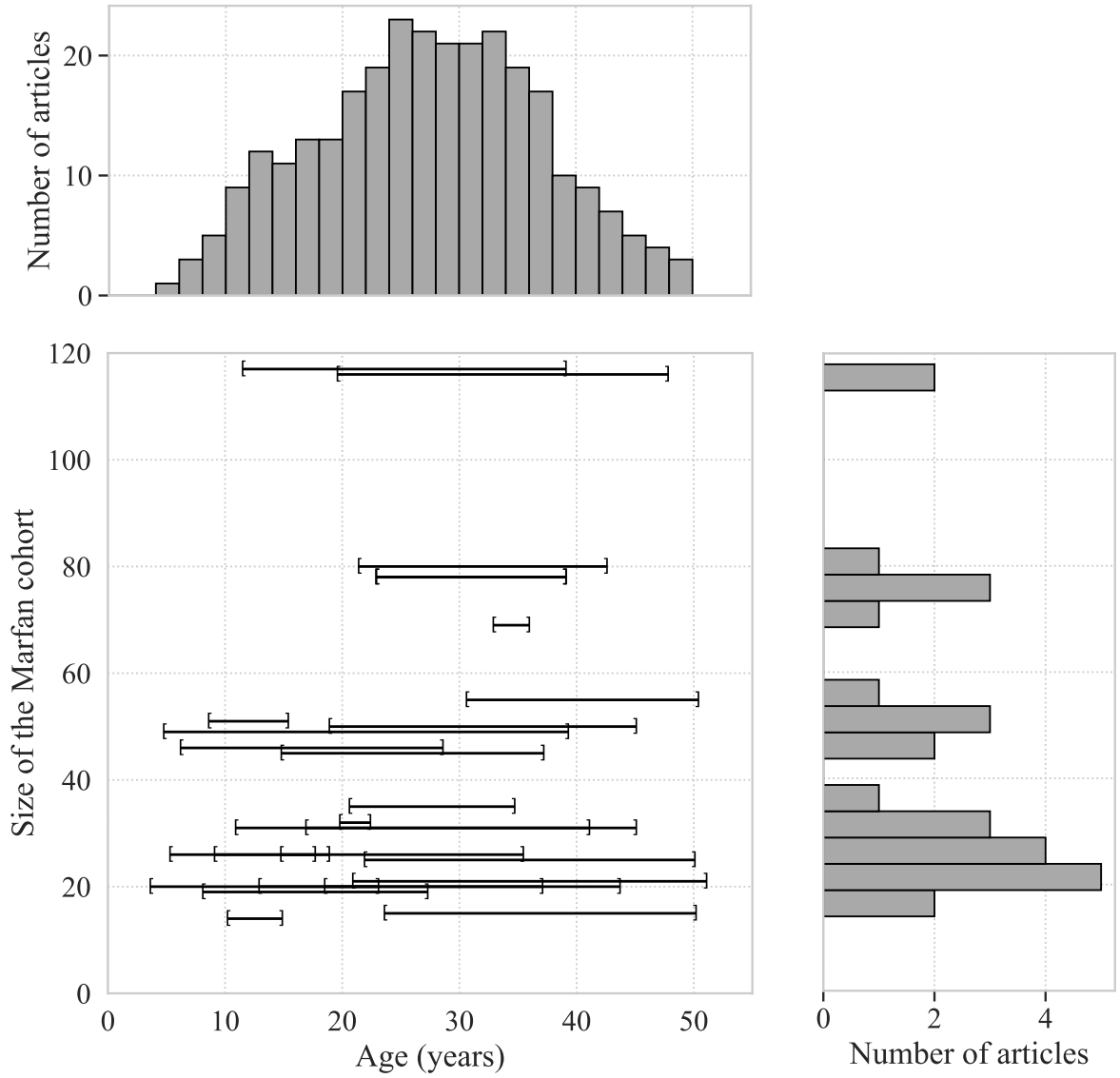


Figure 3: Mean age and standard deviation of the Marfan cohort in selected articles, organized by cohort size. The histogram on the top illustrates the number of articles containing patients within specific age ranges. The histogram on the right depicts the number of articles containing specific cohort sizes. One study (Selamet Tierney et al. [35]) is not included in this plot and consists of 608 MFS patients with a mean age of 11.2 and a standard deviation of 6.3.

Comparison between Marfan and control	Diameter			PWV				Distensibility			$\beta$ stiffness index		
	Root	Aao	Dao	Aao	Arch	Dao	Carotid-femoral	Root	Aao	Dao	Root	Aao	Dao
Statistically different	[15]* [20]* [16] [18]* [22]* [19] [25]* [29] [21]* [27]* [14]* [38]* [40] [42]	[16] [18]* [22]* [19] [25] [29] [21]* [36] [26] [36] [42]	[29] [21]* [36]	[15] [26]	[15] [19] [16] [20] [26] [28] [29] [36]	[15] [19] [26] [28]	[15] [26] [28] [34]	[30]	[23] [36] [32] [15] [29]* [21]	[32] [21] [29]*	[27]	[16] [20] $\diamond$ [18] [22] [21] [25] [40]	[18] [22] [21] [31]
Only statistically different when the aorta is already dilated				[21] [39]		[21]	[29]	[30]		[30]	[30]		
Not statistically different		[15]* [20] [26]* [23]*	[15]* [18]* [22]* [19] [31]	[19] $\bullet$ [28] [36]		[29] [36]		[32]		[30]	[27]		

Table 3: Studies comparing diameter, PWV, distensibility and  $\beta$ -SI between Marfan and control, and results of the statistical tests at different aortic locations.

The symbol  $\star$  indicates quantities corrected for age, pulse pressure and diastolic area,  $\diamond$  indicates that  $\beta$ -SI is corrected for sex, height and age, and  $\bullet$  indicates that PWV is corrected for age and diameter.

208 Additionally, in the studies conducted by Vitarelli et al. [21], Teixido-Tura et al. [29], and Guala et al. [39], it  
209 was observed that when separating the cohorts into dilated aortas and normal diameters, Marfan patients exhibited  
210 increased PWV compared to controls. However, this difference was significant only for already dilated aortas.  
211 According to Teixido-Tura et al. [29], compared with distensibility, PWV demonstrated a slower decrease at the  
212 early stage of aortic dilatation. This suggests that PWV might not be as sensitive to changes in aortic biomechanics  
213 during the initial stages of aortic dilatation compared to distensibility. However, as the aortic dilatation progresses,  
214 PWV gradually increases and eventually becomes significantly different between Marfan and control cohorts, but  
215 only when the aorta is already dilated.

### 216 3.3.3 Aortic distensibility is lower in Marfan patients

217 Among the selected papers, 2 studies compared the distensibility at the root between Marfan and control cohorts,  
218 7 studies examined the distensibility at the Aao, and 3 at the Dao (Table 3). Statistically lower distensibility was  
219 consistently reported in the aortic root, Aao, and Dao for Marfan patients. Furthermore, distensibility showed a  
220 significant decrease with age: Groenink et al. [15] highlighted that, compared to juvenile Marfan cohorts in the  
221 literature, the mean distensibility was nearly half in adult patients. Distensibility appears to be an early marker of  
222 biomechanical changes in Marfan Syndrome. In Akazawa et al. [30]’s study on children, a difference in distensibility  
223 of the root was observed between Marfan and control groups, even in non-dilated roots, at an early stage of life. In  
224 the Dao, distensibility did not differ whether the aorta was dilated or not.

225 Finally, studies conducted by Teixido-Tura et al. [29] and Vitarelli et al. [21] on older cohorts also reported lower  
226 distensibility in adult Marfan patients, whether their aortic root, ascending, or descending aortas were dilated or  
227 non-dilated. These results indicate a decrease in distensibility starting from the proximal aorta.

### 228 3.3.4 $\beta$ -stiffness index is higher in Marfan patients

229 Among the selected studies, 2 compared the  $\beta$ -SI at the root between Marfan and control cohorts, 8 examined the  
230  $\beta$ -SI at the Aao, and 4 at the Dao (Table 3). The findings consistently revealed that the  $\beta$ -SI was significantly higher  
231 in the root, Aao, and Dao in the MFS group when compared to control patients, even after adjusting for factors  
232 such as sex, age, and height. Notably, unlike PWV, MFS patients demonstrated higher  $\beta$ -SI values than controls in  
233 both cases of aortic dilatation and normal aortic diameters. However, it is essential to consider the observation by  
234 Wit et al. [27] that, after 40 years of age, the  $\beta$ -SI did not show significant differences between Marfan and control  
235 cohorts. This may have implications in understanding the progression of stiffness changes associated with age in  
236 Marfan Syndrome patients.

### 237 3.3.5 Biomechanical stiffness measures can be early predictors of aortic dilatation

238 In the 17 longitudinal studies, Marfan patients were followed at various time points throughout their lives, and the  
239 evolution of stiffness parameters was measured. Statistical tests could identify a potential trend in the parameters’  
240 evolution with age. The predictive power of each parameters was thus assessed with regards to aortic dilatation.

### 241 PWV

242 In the study conducted by Groenink et al. [15], PWV was strongly correlated with age in control subjects at all levels  
243 of the aorta. However, in MFS patients, the increase in PWV with age was significantly higher in the proximal aorta  
244 compared to healthy subjects, supporting the hypothesis of media degradation starting at the root [34]. Despite  
245 its correlation with age, PWV was not found to be associated with progressive aortic dilatation at any level in the  
246 longitudinal study by Nollen et al. [17]. This suggests that PWV may not be a reliable candidate for predicting  
247 future aortic dilatation in MFS patients. Furthermore, in patients with aortic root replacement, even though the  
248 distensibility of the graft was significantly lower than the distensibility of the native aorta, the PWV showed no  
249 differences [17]. This indicates that PWV, as a regional measure, may not adequately differentiate diseased tissue  
250 locally and may be insensitive to differences in tissue composition.

251 A noteworthy exception is that PWV demonstrated high specificity and low sensitivity for predicting the absence  
252 of regional dilatation in MFS patients in the longitudinal study by Kröner et al. [28]. Specifically, at least 78% of MFS  
253 patients who showed no aortic growth at follow-up did not have increased regional PWV at baseline. Conversely,  
254 less than 33% of patients who presented with increased PWV at baseline had increased aortic growth at follow-up.

## Distensibility

Several studies, including Baumgartner et al. [18], Akazawa et al. [30], and Schäfer et al. [36], have demonstrated that distensibility can serve as a diagnostic parameter in addition to the current diameter measurements. The main reason is that distensibility was found to be lower even in patients with normal diameters at the root and ascending aorta. In a longitudinal study by Baumgartner et al. [22], the probability of developing an aneurysm was calculated based on ascending aortic distensibility. The findings revealed that higher distensibility measured at baseline was associated with a lower probability of developing aortic dilatation at follow-up. Similarly, Nollen et al. [17] demonstrated that distensibility was predictive of progressive descending thoracic aortic dilatation. A reduction of one unit in distensibility was associated with a 4-fold increase in the risk of dilatation, independent of aortic diameter. However, distensibility was not found to be a significant predictor of dilatation at other aortic locations, as noted by Teixido-Tura et al. [29]. This might be attributed to the relatively advanced stage of aortic disease in that particular study group. Additionally, Merlocco et al. [32] found a linear correlation between distensibility and age, with a slightly higher decline with age compared to normal subjects.

## $\beta$ -stiffness index

The study by Cox et al. [43] provided important insights into the relationship between the  $\beta$ -stiffness index and aortic dilatation in Marfan patients. Their findings revealed that the  $\beta$ -stiffness index in the aortic root was positively correlated with the dilatation rate, indicating that higher  $\beta$  stiffness values were associated with a faster rate of aortic dilatation. Interestingly, the baseline aortic root dimension alone did not show a significant correlation with the dilatation rate. This highlights the potential of the  $\beta$ -stiffness index as an independent and predictive measure for assessing aortic dilatation in Marfan patients.

Additionally, the  $\beta$ -stiffness index was the least dependant on blood pressure variation, making it a robust indicator of aortic stiffness, in comparison to distensibility [44]. Indeed, in Wada et al. [45] study on 7 subjects, no correlation was found between  $\beta$ -stiffness index and mean blood pressure. In Sugawara et al. [46] study,  $\beta$ -stiffness index did not change significantly after decreasing the blood pressure using  $\alpha$ -adrenergic blockade.

## 3.4 Meta analysis

### 3.4.1 Analysis of the augmented dataset

Through the data extraction and augmentation process, the dataset included 286 data points for diameter, 1063 for PWV, 1063 for distensibility, and 733 for the  $\beta$ -stiffness index. Out of these, 1278 data points were associated with a corresponding age value: 1027 age points had corresponding PWV, distensibility and  $\beta$ -SI, 194 only had corresponding PWV and distensibility, and 57 only had corresponding diameter. Original data points constituted 36% of the entire dataset, with the remaining being part of the augmentation process. Specifically for diameter, 62 data points were mean values with 11 converted using Eqs. 4 and 5, and 222 individual points were extracted from manuscripts using WebPlotDigitizer. For PWV, 464 points were calculated using conversion formulas, 39 points were mean values with 8 using Eqs. 4 and 5, and 544 individual data points were from the manuscripts. As for distensibility, 839 points were calculated using conversion formulas, 20 points were mean values with 9 using Eqs. 4 and 5, and 188 were individual data points. Lastly, for the  $\beta$ -stiffness index, 579 points were calculated using conversion formulas, 24 were mean values with 6 using Eqs. 4 and 5, and 238 were individual data points.

Out of the 1172 data points in the augmented dataset, the majority (1082) were associated with patients who did not undergo surgery, 90 data points were unknown (not specified in the article). Regarding medication, 139 data points were from patients under medication such as beta-blockers, 866 data points were from patients not under medication, and 167 data points were unknown (not specified in the article). Table 4 summarizes the number of data points in the augmented dataset obtained from each article.

### 3.4.2 Comparison tests between Marfan and control on the augmented dataset

Consistent with previous literature findings, diameter was indeed statistically larger in Marfan patients at the Root (Figure 4), but no difference in the Aao and Dao was detected. Specifically, the mean diameter in the Marfan cohort was 3.91cm at the root, 2.98cm at the Aao, and 2.10cm in the Dao, compared to 3.05cm, 3.00cm, and 1.86cm, respectively, for the control cohort. Distensibility was significantly lower in Marfan patients except at the root after Bonferroni correction with mean values (in  $10^{-3}\text{mmHg}^{-1}$ ) of 2.46 in the Root, 3.57 in the Aao, 6.18 in the Arch, and 4.23 in the Dao, compared to 2.99 6.11 , 8.17 , and 6.56, respectively, for controls (Fig. 5). The  $\beta$ -SI was also higher

Papers	Number of datapoints
Wit et al. [27]	244
Westenberg et al. [26]	149
Cui et al. [40]	134
Teixido-Tura et al. [29]	127
Groenink et al. [15]	109
Oosterhof et al. [19]	101
Baumgartner et al. [18]	95
Weismann et al. [42]	67
Schäfer et al. [36]	27
Fattori et al. [23]	19
Baumgartner et al. [22]	14
Kiotsekoglou et al. [25]	8
Vitarelli et al. [21]	8
Bradley et al. [20]	8
Guala et al. [47]	8
Yan et al. [38]	8
Sandor et al. [16]	6
Kröner et al. [28]	5
Andel et al. [41]	5
Nollen et al. [17]	5
Salvi et al. [34]	4
Mortensen et al. [24]	4
Grillo et al. [33]	4
Guala et al. [37]	2
Cox et al. [43]	1

Table 4: Papers included the meta-analysis and the number of datapoints in the augmented dataset



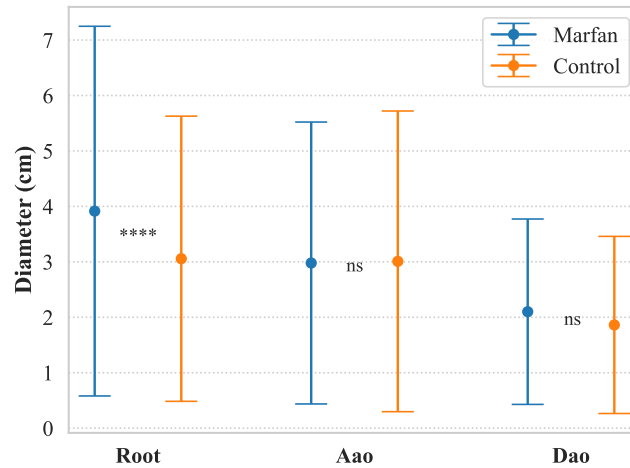


Figure 4: Mean and SD of aortic diameters in Marfan and control cohorts at three different locations show a significant difference only at the root.

304 in Marfan patients at all locations, with mean values of 13.93 in the root, 5.97 in the Aao, 4.42 in the Arch, and  
 305 6.53 in the Dao, compared to 8.25, 3.64, 3.36, and 4.90, respectively, for the control cohort (Fig. 5). Interestingly,  
 306 no statistically different PWV was found in the Root and from carotid to femoral (Fig. 5). Table 5 summarizes the  
 307 results of the statistical tests.

	Root	Aao	Arch	Dao	Carotid-femoral
Diameter	All ages combined: $p = 7.89 \times 10^{-9}$	All ages combined: $p = 0.86$		All ages combined: $p = 0.15$	
PWV	All ages combined: $p = 0.62$ Age-zero projection: $p = 0.30$	All ages combined: $p = 0.0025$ Age-zero projection: $p = 0.0020$	All ages combined: $p = 3.30 \times 10^{-5}$ Age-zero projection: $p = 3.25 \times 10^{-9}$	All ages combined: $p = 1.57 \times 10^{-6}$ Age-zero projection: $p = 2.92 \times 10^{-14}$	All ages combined: $p = 0.14$ Age-zero projection: $p = 0.65$
Distensibility	All ages combined: $p = 0.015$ Age-zero projection: $p = 1.15 \times 10^{-17}$	All ages combined: $p = 8.36 \times 10^{-13}$ Age-zero projection: $p = 0.0020$	All ages combined: $p = 0.00011$ Age-zero projection: $p = 3.25 \times 10^{-9}$	All ages combined: $p = 2.67 \times 10^{-7}$ Age-zero projection: $p = 2.92 \times 10^{-14}$	
$\beta$ - SI	All ages combined: $p = 1.97 \times 10^{-5}$ Age-zero projection: $p = 1.14 \times 10^{-18}$	All ages combined: $p = 5.16 \times 10^{-11}$ Age-zero projection: $p = 1.60 \times 10^{-5}$	All ages combined: $p = 0.00086$ Age-zero projection: $p = 3.01 \times 10^{-9}$	All ages combined: $p = 0.0027$ Age-zero projection: $p = 1.97 \times 10^{-18}$	

Table 5:  $p$ -values for the Welch comparison tests between Marfan and control patients, for the three stiffness measures at different locations

### 308 3.4.3 Linear regressions with age and projection at age-zero comparison

309 Figure 6 and Table 6 present the outcomes of the linear regressions at various aortic locations. Because the quantities  
 310 were not normally distributed, the linear regressions were performed after log transformation. Figure 7 and Table 5  
 311 provides the results from the Welch comparison test after projecting the data to age-zero. The correlation analyses

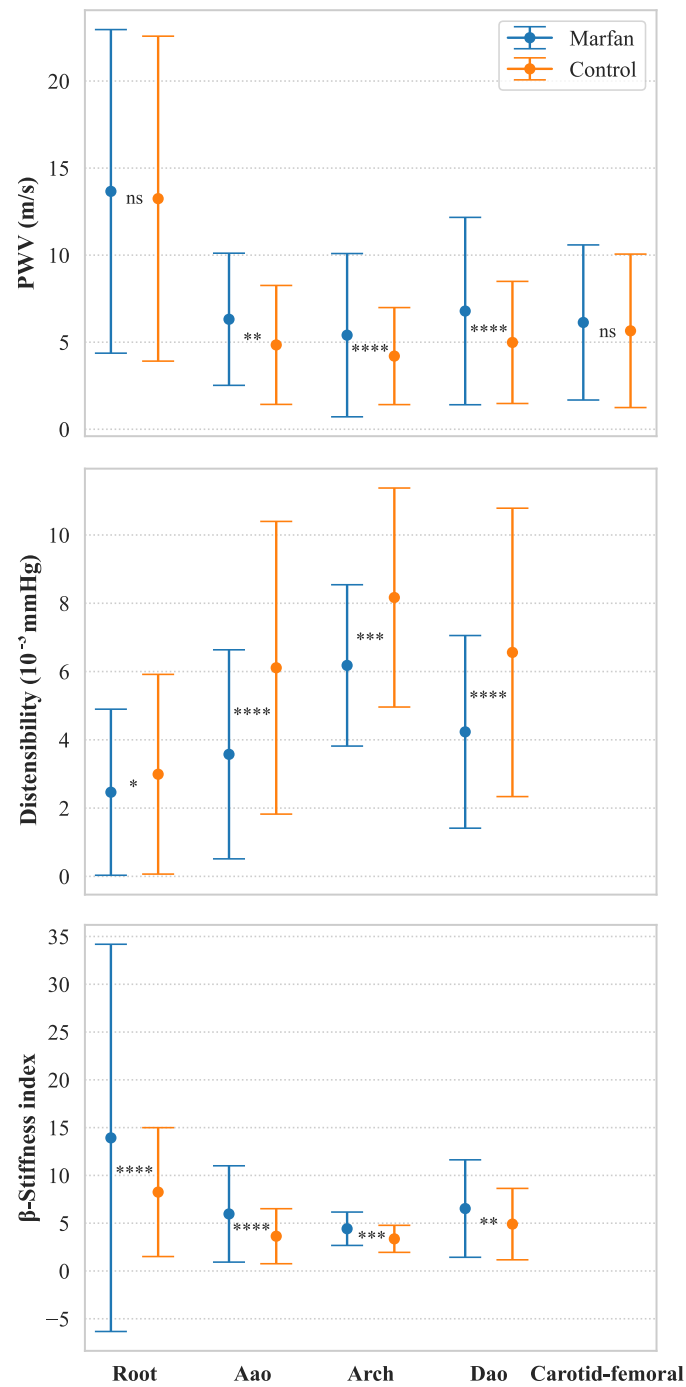


Figure 5: Mean and SD of Distensibility, PWV and  $\beta$ -stiffness index for the augmented dataset, without age consideration.

312 and age-zero projection tests revealed important findings regarding the relationship between PWV, distensibility,  
313  $\beta$ -stiffness index, age, and Marfan syndrome.

314 Notably, a positive correlation was observed between PWV and age in both Marfan and control patients at all  
315 aortic locations ( $p < 0.05$ ). However, the age projection suggested that there was no statistically significant difference  
316 in PWV at the root ( $p = 0.30$ ) and from carotid to femoral ( $p = 0.65$ ) between Marfan and control patients at age-  
317 zero. Additionally, both MFS and control patients exhibited a negative correlation between distensibility and age  
318 at all aortic locations. The age-zero projection demonstrated that distensibility was lower, indicating higher aortic  
319 stiffness in MFS patients already at birth. However, the slopes of the linear regressions revealed that distensibility  
320 decreased more rapidly for the control cohort compared to Marfan patients (-0.027 vs. -0.022 for MFS in the root,  
321 -0.016 vs. -0.010 in the Arch, and -0.026 vs. -0.021 in the Dao, all values in  $10^{-3}\text{mmHg}^{-1}$  per year). This result  
322 could also be influenced by the fact that the meta-analysis does not include patients who have had surgery. Since  
323 patients who have had surgery tend to be older, this may introduce a bias in the dataset, potentially affecting the  
324 observed rate of distensibility decline in the Marfan cohort. The correlation analyses showed that  $\beta$ -SI was positively  
325 correlated with age in both Marfan and control patients at all aortic locations ( $p < 0.05$ ). After conducting age-zero  
326 projection, the results confirmed that there is a statistically significant difference in  $\beta$ -stiffness index between Marfan  
327 and control patients at all locations. Marfan patients had higher values after age-zero projection, indicating stiffer  
328 tissues at an early stage of life compared to controls.

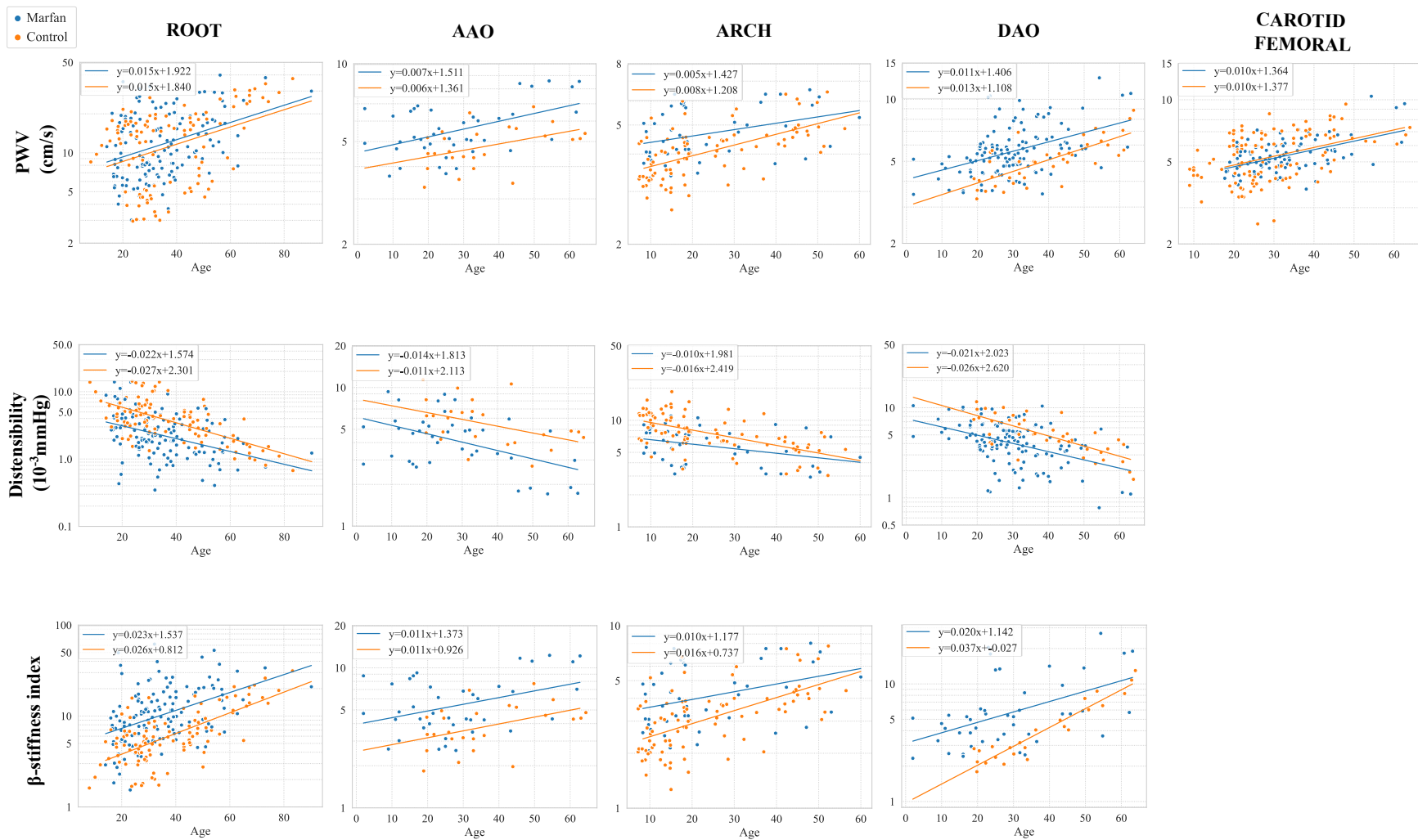


Figure 6: Linear regressions of PWV, distensibility and  $\beta$  stiffness index with respect to age at the different locations. Note the log scale on the vertical axis, since the regressions were performed on log-transformed values for each quantity to ensure normality.

	Root	Aao	Arch	Dao	Carotid-femoral
PWV	<p><b>Marfan:</b>  <math>y = 0.015x + 1.92</math>  <math>R^2 = 0.14</math> ;  <math>p = 1.11 \times 10^{-5}</math></p> <p><b>Control:</b>  <math>y = 0.015x + 1.84</math>  <math>R^2 = 0.15</math> ;  <math>p = 6.65 \times 10^{-5}</math></p>	<p><b>Marfan:</b>  <math>y = 0.007x + 1.51</math>  <math>R^2 = 0.24</math> ;  <math>p = 1.41 \times 10^{-3}</math></p> <p><b>Control:</b>  <math>y = 0.0057x + 1.36</math>  <math>R^2 = 0.19</math> ;  <math>p = 2.77 \times 10^{-2}</math></p>	<p><b>Marfan:</b>  <math>y = 0.0049x + 1.43</math>  <math>R^2 = 0.13</math> ;  <math>p = 1.70 \times 10^{-2}</math></p> <p><b>Control:</b>  <math>y = 0.0082x + 1.21</math>  <math>R^2 = 0.35</math> ;  <math>p = 2.81 \times 10^{-9}</math></p>	<p><b>Marfan:</b>  <math>y = 0.011x + 1.41</math>  <math>R^2 = 0.20</math> ;  <math>p = 2.04 \times 10^{-7}</math></p> <p><b>Control:</b>  <math>y = 0.013x + 1.11</math>  <math>R^2 = 0.56</math> ;  <math>p = 3.12 \times 10^{-8}</math></p>	<p><b>Marfan:</b>  <math>y = 0.0095x + 1.36</math>  <math>R^2 = 0.26</math> ;  <math>p = 5.17 \times 10^{-8}</math></p> <p><b>Control:</b>  <math>y = 0.0098x + 1.38</math>  <math>R^2 = 0.18</math> ;  <math>p = 4.78 \times 10^{-6}</math></p>
Distensibility	<p><b>Marfan:</b>  <math>y = -0.022x + 1.57</math>  <math>R^2 = 0.17</math> ;  <math>p = 9.25 \times 10^{-7}</math></p> <p><b>Control:</b>  <math>y = -0.027x + 2.30</math>  <math>R^2 = 0.42</math> ;  <math>p = 1.26e - 13</math></p>	<p><b>Marfan:</b>  <math>y = -0.014x + 1.81</math>  <math>R^2 = 0.24</math> ;  <math>p = 1.41 \times 10^{-3}</math></p> <p><b>Control:</b>  <math>y = -0.011x + 2.11</math>  <math>R^2 = 0.19</math> ;  <math>p = 2.77 \times 10^{-2}</math></p>	<p><b>Marfan:</b> <math>y = -0.0098x + 1.98</math>  <math>R^2 = 0.13</math> ;  <math>p = 1.70 \times 10^{-2}</math></p> <p><b>Control:</b>  <math>y = -0.016x + 2.42</math>  <math>R^2 = 0.34</math> ;  <math>p = 2.81 \times 10^{-9}</math></p>	<p><b>Marfan:</b> <math>y = -0.021x + 2.023</math>  <math>R^2 = 0.20</math> ;  <math>p = 2.04 \times 10^{-7}</math></p> <p><b>Control:</b>  <math>y = -0.026x + 2.62</math>  <math>R^2 = 0.56</math> ;  <math>p = 3.12 \times 10^{-8}</math></p>	
$\beta$ - SI	<p><b>Marfan:</b>  <math>y = 0.022x + 1.54</math>  <math>R^2 = 0.19</math> ;  <math>p = 1.81 \times 10^{-7}</math></p> <p><b>Control:</b>  <math>y = 0.026x + 0.81</math>  <math>R^2 = 0.44</math> ;  <math>p = 3.58 \times 10^{-14}</math></p>	<p><b>Marfan:</b>  <math>y = 0.011x + 1.37</math>  <math>R^2 = 0.15</math> ;  <math>p = 1.35 \times 10^{-2}</math></p> <p><b>Control:</b>  <math>y = 0.011x + 0.93</math>  <math>R^2 = 0.19</math> ;  <math>p = 2.77 \times 10^{-2}</math></p>	<p><b>Marfan:</b>  <math>y = 0.0098x + 1.18</math>  <math>R^2 = 0.13</math> ;  <math>p = 1.70 \times 10^{-2}</math></p> <p><b>Control:</b>  <math>y = 0.016x + 0.74</math>  <math>R^2 = 0.34</math> ;  <math>p = 2.81 \times 10^{-9}</math></p>	<p><b>Marfan:</b>  <math>y = 0.020x + 1.14</math>  <math>R^2 = 0.24</math> ;  <math>p = 5.64 \times 10^{-4}</math></p> <p><b>Control:</b>  <math>y = 0.037x - 0.027</math>  <math>R^2 = 0.89</math> ;  <math>p = 3.10 \times 10^{-10}</math></p>	

Table 6: Results of the linear regression equations

## 4 Discussion

### 4.1 Key findings in the literature

The diameter of blood vessels is a commonly used indicator for detecting biomechanical changes, and abnormal diameters at specific locations in the aorta are considered signs of disease. Diameter was reported to be larger in Marfan patients at the root and Aao. These results align with previously observed patterns in pediatric Marfan patients, where dilatation typically begins at the sinus of Valsalva, followed by the sino-tubular junction (STJ), and is less frequent in the descending aorta [48]. The reported higher diameters at the root in MFS patients also provide support for the current guideline of measuring the aortic root to plan prophylactic surgery.

Across most aortic regions, studies reported a significantly higher PWV in MFS when compared to control cohorts, but only in the already dilated aortas. Indeed, PWV was not as sensitive to changes in aortic biomechanics in the initial phases of aortic dilatation, e.g., compared to distensibility. This observation underscores the importance of considering the stage of aortic dilatation when interpreting PWV values and highlights the complexity of using PWV as a sole predictor for aortic dilatation in MFS patients. While it may provide valuable information about aortic stiffness, its ability to precisely predict aortic growth is limited. Combining PWV with other relevant parameters, such as distensibility, may yield more comprehensive insights into the dynamics of aortic changes in MFS and aid in making accurate clinical assessments.

The results derived from the studies included in this review provided evidence that change in distensibility values can serve as an effective mean to detect alterations in the biomechanical properties of the aorta. Specifically, a decrease in distensibility was indicative of increased tissue stiffness within the aortic wall. Distensibility was lower at all aortic locations even in juvenile non-dilated aortas, with values half of those in the healthy patients. A significant correlation between distensibility and age was also put forward. Finally, longitudinal studies showed that a higher distensibility is associated with higher chances of developing an aneurysm in the Aao and Dao. Although sensitive to location, these findings underscore the potential utility of distensibility as an early indicator of aortic biomechanical changes in Marfan patients.

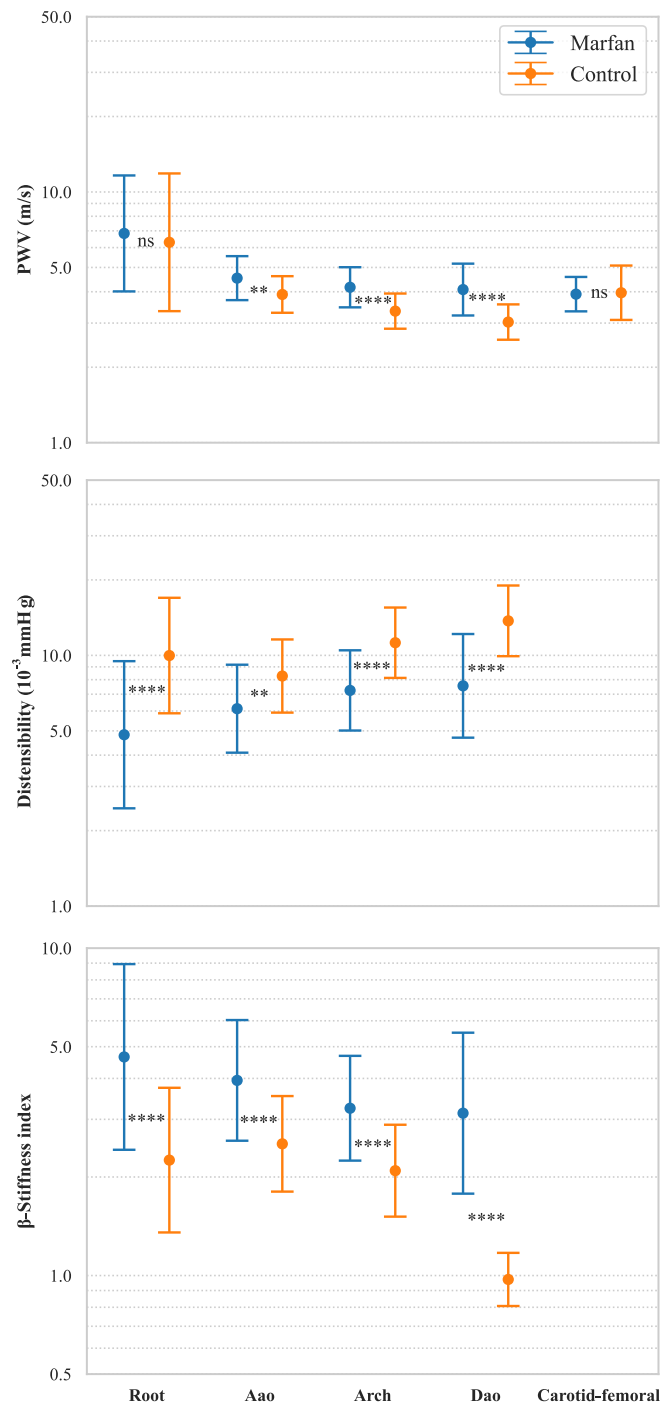


Figure 7: Mean and SD in log-scale of distensibility, PWV and  $\beta$ -stiffness index projected at zero age. The statistical tests were run on log-transformed values for each quantity.



353 The results across the studies indicated that  $\beta$ -SI values were notably higher in the root, Aao, and Dao among  
354 patients with Marfan Syndrome in comparison to control subjects, even in non-dilated aortas. It was positively  
355 correlated with the rate of aortic dilatation, emphasizing its role as a valuable indicator. Unlike baseline aortic  
356 dimensions,  $\beta$ -SI appeared to be a better predictor of the progression of aortic dilatation. However, it is worth noting  
357 that, after 40 years of age, the control and MFS cohorts could not be distinguished using the  $\beta$ -SI. Interestingly,  
358 younger MFS patients had higher  $\beta$ -SI values compared to their age-matched controls, but this distinction diminished  
359 in older populations. This particular observation offers insights on progression of aortic stiffness in MFS patients as  
360 they age. It may suggest that altered aortic stiffness eventually leads to convergence between the Marfan and control  
361 cohorts after a certain age threshold.

## 362 4.2 Meta-analysis results

363 In the meta-analysis, in consensus with the literature, diameter was found to be significantly higher in MFS at the  
364 root, which align with the current guideline of measuring the aortic root to plan prophylactic surgery. Interestingly,  
365 no difference was found in the Aao and Dao. In this case, however, no age consideration was possible to due lack  
366 of data reporting diameter with respect to age. Combining all patients regardless of their age includes bias when  
367 comparing Marfan and control since diameter depends highly on age, weight and height of the patient. Diameter  
368 assessment adjusted for body surface area, which has been found to be more useful than age, height, or weight alone  
369 for the measuring the size of the aorta [49], would have possibly led to different statistical results.

370 The meta-analysis results also provide valuable insights into the relationship between aortic stiffness measures,  
371 age, and Marfan syndrome. Firstly, it was observed that without considering age, Marfan patients exhibited higher  
372 PWV values at all locations, except for the root and the carotid-femoral region. It is particularly interesting to note  
373 that distinctions between cohorts were challenging when assessing PWV at the carotid-femoral region, which is the  
374 most commonly used PWV measurement in clinical practice. This observation can be explained by the fact that  
375 carotid-femoral PWV covers a substantial portion of the aortic tract and may not be sensitive to local variations in  
376 tissue stiffness. On the other hand, PWV was found to be approximately two times higher at the root. However, the  
377 root's relatively small length may lead to difficulties in tracking the foot of the pulse wave, resulting in the considerably  
378 large standard deviation observed in patients. PWV at the root is rarely utilized in clinical practice and failed to  
379 distinguish between the two cohorts effectively. Furthermore, a positive correlation was identified between PWV and  
380 age in both Marfan and control patients across all aortic locations. However, the age-zero projection suggested that  
381 a statistically significant difference in PWV exists at all locations, except at the root and the carotid-femoral region.  
382 This notable result implies that age plays a significant role in the evolution of PWV. More importantly, it indicates  
383 that the difference between Marfan and control patients does not develop with age. Instead, Marfan patients are  
384 born with higher PWV, indicating stiffer aortic tissues. It is worth highlighting that PWV measurements taken at  
385 the carotid-femoral region and the root fail to capture these inherent differences.

386 Both Marfan and control patients were found to exhibit a negative correlation between distensibility and age  
387 at all aortic locations. The age-zero projection further emphasized that distensibility is lower, signifying increased  
388 aortic stiffness in MFS patients, even at a young age. Notably, the slopes of the linear regressions indicated that  
389 distensibility decreases at a faster rate for the control cohort compared to Marfan patients. It is essential to note  
390 that this observation might be influenced by the absence of patients past 40 years old in the dataset, introducing a  
391 potential bias.

392 Additionally, our analysis demonstrated that  $\beta$ -stiffness index was positively correlated with age in both Marfan  
393 and control patients at all aortic locations. Before and after conducting age-zero projection, the results affirmed a  
394 statistically significant difference in  $\beta$ -stiffness index between Marfan and control patients at all locations. These  
395 findings suggest that Marfan patients exhibit higher  $\beta$ -SI values even at an early stage of life, indicating stiffer aortic  
396 tissues compared to controls.

397 The results at age-zero projection provide a more reliable assessment of aortic stiffness in Marfan patients and  
398 underscore the importance of considering age as a confounding factor in such studies. Overall, the data indicates  
399 that distensibility and  $\beta$ -index are consistently altered in Marfan patients compared to controls, while PWV still  
400 shows location-specific differences between the two groups before and after age-zero projection.

### 401 4.3 Recommendations for future studies

402 Handling missing data poses a significant challenge in systematic quantitative reviews. This review underscores  
403 the importance of reporting data to facilitate statistically robust and comprehensive meta-analyses. Rather than  
404 reporting mean and SD, we recommend that studies report individual data points. This could be achieved through  
405 supplementary dataset if needed. The incorporation of a substantial number of participants and the diverse range of  
406 study designs greatly contributes to the robustness and depth of the findings presented in this review. However, if  
407 each patient had reported diameter, age and stiffness measure, it would have allowed for a more thorough statistical  
408 analysis (such as multivariate regression).

409 It is noticeable that there is a lack of studies focusing on specific age ranges and cohorts with more than 40  
410 patients. For pediatrics, only one multicenter study comprises 608 patients [35]. A plausible explanation could be  
411 that MFS is rarely diagnosed in paediatric populations since patients do not appear phenotypically different. Not  
412 all paediatric patients have family history either, which makes the diagnosis at an early stage of life challenging.  
413 Similarly, no studies focused on patients past 40 years old, which represents a turning point in stiffness increase  
414 according to Wit et al. [27]. This absence could potentially be attributed to the fact that aortic surgeries are  
415 typically performed before patients reach this age, resulting in limited accessible data for older patients.

### 416 4.4 Limitations

417 Regarding limitations, we acknowledge that all pertinent studies may not have been captured in our search. Our  
418 search criteria might have missed studies that were not explicitly categorized under, or did not explicitly reference a  
419 Marfan syndrome diagnosis. Since Marfan syndrome can be misdiagnosed for other connective tissue disorders caused  
420 by pathogenic variants in genes other than FBN1, studies published before the revised Ghent criteria were excluded.  
421 However, they likely include true Marfan patients and provide valuable insights. Similarly, mild Marfan syndrome  
422 cases and cases of suspected but not yet verified Marfan syndrome, were possibly overlooked in this present work.  
423 Despite the revised Ghent criteria, Marfan syndrome clinically overlaps with other connective tissue disorders, such as  
424 Loeys-Dietz syndrome, and distinguishing them is challenging in the absence of a molecular diagnosis. Consequently,  
425 individuals with mutations in proteins related to the TGF- $\beta$  pathway might receive a Marfan syndrome diagnosis  
426 against the Ghent nosology and be included in this study.

427 While this work does touch upon aortic diameter, it is important to note that a significant portion of the existing  
428 literature primarily focuses on aortic diameter in Marfan patients, but these studies were not encompassed in this  
429 review. Instead, discussions concerning diameter in this review are derived exclusively from data within the selected  
430 papers that primarily address aortic stiffness measures.

431 The aortic sites and regions were not defined identically between the selected papers. To facilitate the reporting  
432 of results and minimize potential inconsistencies, we made efforts to categorize them into five main regions: Root,  
433 Aao, Arch, Dao and Carotid-femoral, although minor variations may remain. The data gap in specific age brackets  
434 is an essential consideration when interpreting the findings of this review. The review's strength lies in its ability to  
435 compile and analyze aortic stiffness in different populations. However, the absence of age-specific studies, especially  
436 in the pediatric and older age groups, highlights a potential area for future research.

437 Concerning the meta-analysis, despite our efforts to address missing data, several factors introduced bias into the  
438 statistical tests. This bias stems from theoretical conversion equations, which cannot precisely mimic physiological  
439 behaviour, as well as the absence of individual data points and the lack of age-associated values for each data point.  
440 Similarly, conducting an age projection involves making inferences beyond the data range, which may not align  
441 with in-vivo behaviour. The regression analysis with age was conducted solely on data that included individual data  
442 points with corresponding age. Additionally, the predictive power of aortic stiffness measures could not be thoroughly  
443 investigated in the meta-analysis due to the absence of articles reporting individual values for patients followed at  
444 various ages. Lastly, examining diameter as a potential confounding variable was unfeasible because of the scarcity  
445 of studies reporting individual data points for stiffness measures, alongside corresponding age and diameter values.

### 446 4.5 Conclusion

447 To the best of the authors' knowledge, this is the first systematic review and meta analysis investigating how in-  
448 vivo aortic stiffness measures can be early markers of aortic disease in Marfan syndrome, and their prediction of  
449 aortic dilatation. Our study emphasizes the importance of using a combination of parameters, including diameter

450 measurements and stiffness indices, to obtain a more comprehensive evaluation of aortic disease in MFS patients.  
451 This approach can provide a deeper understanding of disease progression and assist clinical decision making.

## 452 **Funding**

453 This study was partially funded by the Engineering and Physical Sciences Research Council (EP/N02124X/1) and  
454 University of Glasgow's College of Science and Engineering via PhD studentship.

## 455 **Data availability statement**

456 All data produced in the present study are available upon reasonable request to the authors

## References

- 457
- 458 [1] Stephen C Mockrin. *Molecular Genetics & Gene Therapy of Cardiovascular Diseases*. CRC Press, 1996. doi:  
459 <https://doi.org/10.1201/9781482273243>.
- 460 [2] Goetz C. Mueller, Veronika Stark, Kristoffer Steiner, Yskert von Kodolitsch, Meike Rybczynski, Jochen Weil,  
461 and Thomas S. Mir. Impact of Age and Gender on Cardiac Pathology in Children and Adolescents With Marfan  
462 Syndrome. *Pediatric Cardiology*, 34(4):991–998, April 2013. ISSN 1432-1971. doi: 10.1007/s00246-012-0593-0.  
463 URL <https://doi.org/10.1007/s00246-012-0593-0>.
- 464 [3] Eric M. Isselbacher, Ourania Preventza, James Hamilton Black, John G. Augoustides, Adam W. Beck,  
465 Michael A. Bolen, Alan C. Braverman, Bruce E. Bray, Maya M. Brown-Zimmerman, Edward P. Chen, Ty-  
466 rone J. Collins, Abe DeAnda, Christina L. Fanola, Leonard N. Girardi, Caitlin W. Hicks, Dawn S. Hui, William  
467 Schuyler Jones, Vidyasagar Kalahasti, Karen M. Kim, Dianna M. Milewicz, Gustavo S. Oderich, Laura Og-  
468 bechie, Susan B. Promes, Elsie Gyang Ross, Marc L. Schermerhorn, Sabrina Singleton Times, Elaine E. Tseng,  
469 Grace J. Wang, and Y. Joseph Woo. 2022 acc/aha guideline for the diagnosis and management of aortic  
470 disease: A report of the american heart association/american college of cardiology joint committee on clinical  
471 practice guidelines. *Circulation*, 146(24):e334–e482, 2022. doi: 10.1161/CIR.0000000000001106. URL  
472 <https://www.ahajournals.org/doi/abs/10.1161/CIR.0000000000001106>.
- 473 [4] M. Groenink, T. A. Lohuis, J. G. Tijssen, M. S. Naeff, R. C. Hennekam, E. E. van der Wall, and B. J. Mulder.  
474 Survival and complication free survival in Marfan’s syndrome: implications of current guidelines. *Heart (British*  
475 *Cardiac Society)*, 82(4):499–504, October 1999. ISSN 1468-201X. doi: 10.1136/hrt.82.4.499.
- 476 [5] Vincent L. Gott, Peter S. Greene, Diane E. Alejo, Duke E. Cameron, David C. Naftel, D. Craig Miller,  
477 A. Marc Gillinov, John C. Laschinger, Hans G. Borst, Christian E.A. Cabrol, Denton A. Cooley, Joseph S.  
478 Coselli, Tirone E. David, Randall B. Griepp, Nicholas T. Kouchoukos, Marko I. Turina, and Reed E.  
479 Pyeritz. Replacement of the Aortic Root in Patients with Marfan’s Syndrome. *New England Jour-*  
480 *nal of Medicine*, 340(17):1307–1313, April 1999. ISSN 0028-4793. doi: 10.1056/NEJM199904293401702.  
481 URL <https://doi.org/10.1056/NEJM199904293401702>. Publisher: Massachusetts Medical Society .eprint:  
482 <https://doi.org/10.1056/NEJM199904293401702>.
- 483 [6] Lars G. Svensson and Lev Khitin. Aortic cross-sectional area/height ratio timing of aortic surgery in asymp-  
484 tomatic patients with Marfan syndrome. *The Journal of Thoracic and Cardiovascular Surgery*, 123(2):360–361,  
485 February 2002. ISSN 0022-5223, 1097-685X. doi: 10.1067/mtc.2002.118497. URL [https://www.jtcvs.org/](https://www.jtcvs.org/article/S0022-5223(02)13008-X/fulltext)  
486 [article/S0022-5223\(02\)13008-X/fulltext](https://www.jtcvs.org/article/S0022-5223(02)13008-X/fulltext). Publisher: Elsevier.
- 487 [7] Matthew J. Page, Joanne E. McKenzie, Patrick M. Bossuyt, Isabelle Boutron, Tammy C. Hoffmann, Cynthia D.  
488 Mulrow, Larissa Shamseer, Jennifer M. Tetzlaff, Elie A. Akl, Sue E. Brennan, Roger Chou, Julie Glanville,  
489 Jeremy M. Grimshaw, Asbjørn Hróbjartsson, Manoj M. Lalu, Tianjing Li, Elizabeth W. Loder, Evan Mayo-  
490 Wilson, Steve McDonald, Luke A. McGuinness, Lesley A. Stewart, James Thomas, Andrea C. Tricco, Vivian A.  
491 Welch, Penny Whiting, and David Moher. The PRISMA 2020 statement: an updated guideline for reporting  
492 systematic reviews. *BMJ*, 372:n71, March 2021. ISSN 1756-1833. doi: 10.1136/bmj.n71. URL [https://](https://www.bmj.com/content/372/bmj.n71)  
493 [www.bmj.com/content/372/bmj.n71](https://www.bmj.com/content/372/bmj.n71). Publisher: British Medical Journal Publishing Group Section: Research  
494 Methods & Reporting.
- 495 [8] A. De Paepe, R. B. Devereux, H. C. Dietz, R. C. Hennekam, and R. E. Pyeritz. Revised diagnostic criteria for  
496 the Marfan syndrome. *American Journal of Medical Genetics*, 62(4):417–426, April 1996. ISSN 0148-7299. doi:  
497 10.1002/(SICI)1096-8628(19960424)62:4<417::AID-AJMG15>3.0.CO;2-R.
- 498 [9] Ankit Rohatgi. Webplotdigitizer: Version 4.6, 2022. URL <https://automeris.io/WebPlotDigitizer>.
- 499 [10] Taha Alhalimi, Jisok Lim, Drew Gourley, and Hirofumi Tanaka. Converting and Standardizing Various Measures  
500 of Arterial Stiffness to Pulse Wave Velocity. *Pulse*, 9(3-4):72–82, 2021. ISSN 2235-8676, 2235-8668. doi: 10.  
501 1159/000517872. URL <https://www.karger.com/Article/FullText/517872>. Publisher: Karger Publishers.
- 502 [11] J. Crighton Bramwell and Archibald Vivian Hill. The velocity of pulse wave in man. *Proceedings of the Royal*  
503 *Society of London. Series B, Containing Papers of a Biological Character*, 93(652):298–306, February 1922.

- 504 doi: 10.1098/rspb.1922.0022. URL <https://royalsocietypublishing.org/doi/10.1098/rspb.1922.0022>.  
505 Publisher: Royal Society.
- 506 [12] Christopher J. Weir, Isabella Butcher, Valentina Assi, Stephanie C. Lewis, Gordon D. Murray, Peter Langhorne,  
507 and Marian C. Brady. Dealing with missing standard deviation and mean values in meta-analysis of continuous  
508 outcomes: a systematic review. *BMC Medical Research Methodology*, 18(1):25, March 2018. ISSN 1471-2288.  
509 doi: 10.1186/s12874-018-0483-0. URL <https://doi.org/10.1186/s12874-018-0483-0>.
- 510 [13] Xiang Wan, Wenqian Wang, Jiming Liu, and Tiejun Tong. Estimating the sample mean and standard deviation  
511 from the sample size, median, range and/or interquartile range. *BMC Medical Research Methodology*, 14(1):  
512 135, December 2014. ISSN 1471-2288. doi: 10.1186/1471-2288-14-135. URL [https://doi.org/10.1186/](https://doi.org/10.1186/1471-2288-14-135)  
513 [1471-2288-14-135](https://doi.org/10.1186/1471-2288-14-135).
- 514 [14] Ashwin Prakash, Himanshu Adlakha, Nicole Rabideau, Cara J. Hass, Shaine A. Morris, Tal Geva, Kimberlee  
515 Gauvreau, Michael N. Singh, and Ronald V. Lacro. Segmental Aortic Stiffness in Children and Young Adults  
516 With Connective Tissue Disorders: Relationships With Age, Aortic Size, Rate of Dilatation, and Surgical Root  
517 Replacement. *Circulation*, 132(7):595–602, August 2015. ISSN 1524-4539. doi: 10.1161/CIRCULATIONAHA.  
518 114.014934.
- 519 [15] Maarten Groenink, Albert de Roos, Barbara J. M. Mulder, Ben Verbeeten, Janneke Timmermans, Aeilko H.  
520 Zwinderman, Jos A. E. Spaan, and Ernst E. van der Wall. Biophysical Properties of the Normal-sized Aorta  
521 in Patients with Marfan Syndrome: Evaluation with MR Flow Mapping. *Radiology*, 219(2):535–540, May  
522 2001. ISSN 0033-8419. doi: 10.1148/radiology.219.2.r01ma01535. URL [https://pubs.rsna.org/doi/10.](https://pubs.rsna.org/doi/10.1148/radiology.219.2.r01ma01535)  
523 [1148/radiology.219.2.r01ma01535](https://pubs.rsna.org/doi/10.1148/radiology.219.2.r01ma01535). Publisher: Radiological Society of North America.
- 524 [16] George G. S Sandor, Takashi Hishitani, Ross E Petty, Mary T Potts, Astrid DeSouza, Eustace DeSouza, and  
525 James E Potts. A novel doppler echocardiographic method of measuring the biophysical properties of the aorta  
526 in pediatric patients. *Journal of the American Society of Echocardiography*, 16(7):745–750, July 2003. ISSN  
527 0894-7317. doi: 10.1016/S0894-7317(03)00407-3. URL [https://www.sciencedirect.com/science/article/](https://www.sciencedirect.com/science/article/pii/S0894731703004073)  
528 [pii/S0894731703004073](https://www.sciencedirect.com/science/article/pii/S0894731703004073).
- 529 [17] Gijs J. Nollen, Maarten Groenink, Jan G.P. Tijssen, Ernst E. van der Wall, and Barbara J.M. Mulder. Aortic  
530 stiffness and diameter predict progressive aortic dilatation in patients with Marfan syndrome. *European Heart*  
531 *Journal*, 25(13):1146–1152, July 2004. ISSN 0195-668X. doi: 10.1016/j.ehj.2004.04.033. URL [https://doi.](https://doi.org/10.1016/j.ehj.2004.04.033)  
532 [org/10.1016/j.ehj.2004.04.033](https://doi.org/10.1016/j.ehj.2004.04.033).
- 533 [18] Daniela Baumgartner, Christian Baumgartner, Gabor Mátyás, Beat Steinmann, Judith Löffler-Ragg, Elisabeth  
534 Schermer, Ulrich Schweigmann, Ivo Baldissera, Bernhard Frischhut, John Hess, and Ignaz Hammerer. Diagnostic  
535 power of aortic elastic properties in young patients with Marfan syndrome. *The Journal of Thoracic and*  
536 *Cardiovascular Surgery*, 129(4):730–739, April 2005. ISSN 0022-5223. doi: 10.1016/j.jtcvs.2004.07.019. URL  
537 <https://www.sciencedirect.com/science/article/pii/S0022522304009997>.
- 538 [19] Thomas Oosterhof, Gijs J. Nollen, Ernst E. van der Wall, Anje M. Spijkerboer, Jana Hrudova, Berto J.  
539 Bouma, Marcel G. W. Dijkgraaf, and Barbara J. M. Mulder. Comparison of aortic stiffness in patients with  
540 juvenile forms of ascending aortic dilatation with versus without Marfan’s syndrome. *The American Jour-*  
541 *nal of Cardiology*, 95(8):996–998, April 2005. ISSN 0002-9149. doi: 10.1016/j.amjcard.2004.12.047. URL  
542 <https://www.sciencedirect.com/science/article/pii/S000291490500130X>.
- 543 [20] Timothy J. Bradley, James E. Potts, Mary T. Potts, Astrid M. DeSouza, and George G. S. Sandor. Echocar-  
544 diographic Doppler Assessment of the Biophysical Properties of the Aorta in Pediatric Patients With the  
545 Marfan Syndrome. *The American Journal of Cardiology*, 96(9):1317–1321, November 2005. ISSN 0002-  
546 9149. doi: 10.1016/j.amjcard.2005.06.080. URL [https://www.sciencedirect.com/science/article/pii/](https://www.sciencedirect.com/science/article/pii/S0002914905012798)  
547 [S0002914905012798](https://www.sciencedirect.com/science/article/pii/S0002914905012798).
- 548 [21] Antonio Vitarelli, Ysabel Conde, Ester Cimino, Ilaria D’Angeli, Simona D’Orazio, Simona Stellato, Viviana  
549 Padella, and Fiorella Caranci. Aortic Wall Mechanics in the Marfan Syndrome Assessed by Transesophageal  
550 Tissue Doppler Echocardiography. *The American Journal of Cardiology*, 97(4):571–577, February 2006. ISSN  
551 0002-9149. doi: 10.1016/j.amjcard.2005.09.089. URL [https://www.sciencedirect.com/science/article/](https://www.sciencedirect.com/science/article/pii/S0002914905019120)  
552 [pii/S0002914905019120](https://www.sciencedirect.com/science/article/pii/S0002914905019120).



- 553 [22] Daniela Baumgartner, Christian Baumgartner, Elisabeth Schermer, Georg Engl, Ulrich Schweigmann, Gabor  
554 Mátyás, Beat Steinmann, and Jörg Ingolf Stein. Different patterns of aortic wall elasticity in patients with  
555 Marfan syndrome: A noninvasive follow-up study. *The Journal of Thoracic and Cardiovascular Surgery*, 132(4):  
556 811–819, October 2006. ISSN 0022-5223. doi: 10.1016/j.jtcvs.2006.07.001. URL <https://www.sciencedirect.com/science/article/pii/S0022522306011810>.
- 558 [23] Rossella Fattori, Letizia Bacchi Reggiani, Guglielmina Pepe, Gabriella Napoli, Claudio Bna, Francesca Celletti,  
559 Luigi Lovato, and Giampaolo Gavelli. Magnetic Resonance Imaging Evaluation of Aortic Elastic Properties  
560 as Early Expression of Marfan Syndrome. *Journal of Cardiovascular Magnetic Resonance*, July 2009. URL  
561 <https://www.tandfonline.com/doi/abs/10.3109/10976640009148688>. Publisher: Taylor & Francis.
- 562 [24] Kai Mortensen, Muhammet A. Aydin, Meike Rybczynski, Johannes Baulmann, Nazila Abdul Schahidi, Georgina  
563 Kean, Kristine Kühne, Alexander M.J. Bernhardt, Olaf Franzen, Thomas Mir, Christian Habermann, Dietmar  
564 Koschyk, Rodolfo Ventura, Stephan Willems, Peter N. Robinson, Jürgen Berger, Hermann Reichenspurner,  
565 Thomas Meinertz, and Yskert von Kodolitsch. Augmentation Index Relates to Progression of Aortic Disease  
566 in Adults With Marfan Syndrome. *American Journal of Hypertension*, 22(9):971–979, September 2009. ISSN  
567 0895-7061. doi: 10.1038/ajh.2009.115. URL <https://doi.org/10.1038/ajh.2009.115>.
- 568 [25] Anatoli Kiotsekoglou, James C. Moggridge, Samir K. Saha, Venediktos Kapetanakis, Malini Govindan,  
569 Francisco Alpendurada, Michael J. Mullen, John Camm, George R. Sutherland, Bart H. Bijnens, and  
570 Anne H. Child. Assessment of Aortic Stiffness in Marfan Syndrome Using Two-Dimensional and Doppler  
571 Echocardiography. *Echocardiography*, 28(1):29–37, 2011. ISSN 1540-8175. doi: 10.1111/j.1540-8175.2010.  
572 01241.x. URL <https://onlinelibrary.wiley.com/doi/abs/10.1111/j.1540-8175.2010.01241.x>.  
573 [\\_eprint: https://onlinelibrary.wiley.com/doi/pdf/10.1111/j.1540-8175.2010.01241.x](https://onlinelibrary.wiley.com/doi/pdf/10.1111/j.1540-8175.2010.01241.x).
- 574 [26] Jos J.M. Westenberg, Arthur J.H.A. Scholte, Zuzana Vaskova, Rob J. van der Geest, Maarten Groenink, Gerda  
575 Labadie, Pieter J. van den Boogaard, Teodora Radonic, Yvonne Hilhorst-Hofstee, Barbara J.M. Mulder, Lu-  
576 cia J.M. Kroft, Johan H.C. Reiber, and Albert de Roos. Age-related and regional changes of aortic stiffness  
577 in the marfan syndrome: Assessment with velocity-encoded MRI. *Journal of Magnetic Resonance Imaging*, 34  
578 (3):526–531, 2011. ISSN 1522-2586. doi: 10.1002/jmri.22646. URL <https://onlinelibrary.wiley.com/doi/abs/10.1002/jmri.22646>.  
579 [\\_eprint: https://onlinelibrary.wiley.com/doi/pdf/10.1002/jmri.22646](https://onlinelibrary.wiley.com/doi/pdf/10.1002/jmri.22646).
- 580 [27] Aletta de Wit, Kelly Vis, and Richmond W. Jeremy. Aortic Stiffness in Heritable Aortopathies: Relationship to  
581 Aneurysm Growth Rate. *Heart, Lung and Circulation*, 22(1):3–11, January 2013. ISSN 1443-9506, 1444-2892.  
582 doi: 10.1016/j.hlc.2012.08.049. URL [https://www.heartlungcirc.org/article/S1443-9506\(12\)01256-5/](https://www.heartlungcirc.org/article/S1443-9506(12)01256-5/fulltext)  
583 [fulltext](https://www.heartlungcirc.org/article/S1443-9506(12)01256-5/fulltext). Publisher: Elsevier.
- 584 [28] Eleanore S. J. Kröner, Arthur J. H. A. Scholte, Patrick J. H. de Koning, Pieter J. van den Boogaard, Lucia  
585 J. M. Kroft, Rob J. van der Geest, Yvonne Hilhorst-Hofstee, Hildo J. Lamb, Hans-Marc J. Siebelink, Barbara  
586 J. M. Mulder, Maarten Groenink, Teodora Radonic, Ernst E. van der Wall, Albert de Roos, Johan H. C.  
587 Reiber, and Jos J. M. Westenberg. MRI-assessed regional pulse wave velocity for predicting absence of regional  
588 aorta luminal growth in marfan syndrome. *International Journal of Cardiology*, 167(6):2977–2982, September  
589 2013. ISSN 0167-5273. doi: 10.1016/j.ijcard.2012.08.057. URL [https://www.sciencedirect.com/science/](https://www.sciencedirect.com/science/article/pii/S0167527312010868)  
590 [article/pii/S0167527312010868](https://www.sciencedirect.com/science/article/pii/S0167527312010868).
- 591 [29] Gisela Teixeira-Tura, Alban Redheuil, Jose Rodríguez-Palomares, Laura Gutiérrez, Violeta Sánchez, Alberto  
592 Forteza, Joao A. C. Lima, David García-Dorado, and Artur Evangelista. Aortic biomechanics by magnetic  
593 resonance: Early markers of aortic disease in Marfan syndrome regardless of aortic dilatation? *International*  
594 *Journal of Cardiology*, 171(1):56–61, January 2014. ISSN 0167-5273. doi: 10.1016/j.ijcard.2013.11.044. URL  
595 <https://www.sciencedirect.com/science/article/pii/S0167527313020627>.
- 596 [30] Yohei Akazawa, Noriko Motoki, Akira Tada, Shoko Yamazaki, Akira Hachiya, Satoshi Matsuzaki, Motoko  
597 Kamiya, Tomohiko Nakamura, Tomoki Kosho, and Yuji Inaba. Decreased Aortic Elasticity in Children With  
598 Marfan Syndrome or Loeys-Dietz Syndrome. *Circulation Journal*, 80(11):2369–2375, 2016. doi: 10.1253/circj.  
599 CJ-16-0739.



- 600 [31] S. D. Singh, X. Y. Xu, N. B. Wood, J. R. Pepper, C. Izgi, T. Treasure, and R. H. Mohiaddin. Aortic flow  
601 patterns before and after personalised external aortic root support implantation in Marfan patients. *Journal*  
602 *of Biomechanics*, 49(1):100–111, January 2016. ISSN 0021-9290. doi: 10.1016/j.jbiomech.2015.11.040. URL  
603 <https://www.sciencedirect.com/science/article/pii/S002192901500682X>.
- 604 [32] Anthony Merlocco, Ronald V. Lacro, Kimberlee Gauvreau, Nicole Rabideau, Michael N. Singh, and Ashwin  
605 Prakash. Longitudinal Changes in Segmental Aortic Stiffness Determined by Cardiac Magnetic Resonance in  
606 Children and Young Adults With Connective Tissue Disorders (the Marfan, Loeys-Dietz, and Ehlers-Danlos  
607 Syndromes, and Nonspecific Connective Tissue Disorders). *The American Journal of Cardiology*, 120(7):1214–  
608 1219, October 2017. ISSN 0002-9149. doi: 10.1016/j.amjcard.2017.06.064. URL <https://www.sciencedirect.com/science/article/pii/S0002914917311268>.
- 610 [33] Andrea Grillo, Paolo Salvi, Susan Marelli, Lan Gao, Lucia Salvi, Andrea Faini, Giuliana Trifirò, Renzo Carretta,  
611 Alessandro Pini, and Gianfranco Parati. Impaired Central Pulsatile Hemodynamics in Children and Adolescents  
612 With Marfan Syndrome. *Journal of the American Heart Association*, 6(11):e006815, November 2017. ISSN 2047-  
613 9980. doi: 10.1161/JAHA.117.006815. URL <https://www.ahajournals.org/doi/10.1161/JAHA.117.006815>.
- 614 [34] Paolo Salvi, Andrea Grillo, Susan Marelli, Lan Gao, Lucia Salvi, Maurizio Viecca, Anna Maria Di Blasio,  
615 Renzo Carretta, Alessandro Pini, and Gianfranco Parati. Aortic dilatation in Marfan syndrome: role of arterial  
616 stiffness and fibrillin-1 variants. *Journal of Hypertension*, 36(1):77–84, January 2018. ISSN 1473-5598. doi:  
617 10.1097/HJH.0000000000001512.
- 618 [35] Elif Seda Selamet Tierney, Jami C. Levine, Lynn A. Sleeper, Mary J. Roman, Timothy J. Bradley, Steven D.  
619 Colan, Shan Chen, M. Jay Campbell, Meryl S. Cohen, Julie De Backer, Haleh Heydarian, Arvind Hoskoppal,  
620 Wyman W. Lai, Aimee Liou, Edward Marcus, Arni Nutting, Aaron K. Olson, David A. Parra, Gail D. Pearson,  
621 Mary Ella Pierpont, Beth F. Printz, Reed E. Pyeritz, William Ravekes, Angela M. Sharkey, Shubhika Srivastava,  
622 Luciana Young, and Ronald V. Lacro. Influence of Aortic Stiffness on Aortic-Root Growth Rate and Outcome in  
623 Patients With the Marfan Syndrome. *The American Journal of Cardiology*, 121(9):1094–1101, May 2018. ISSN  
624 0002-9149. doi: 10.1016/j.amjcard.2018.01.016. URL <https://www.sciencedirect.com/science/article/pii/S0002914918301589>.
- 626 [36] Michal Schäfer, Lorna P Browne, Uyen Truong, James J Jaggars, Max B Mitchell, Ladonna Malone, Gareth  
627 Morgan, Kathryn Chatfield, Daniel McLennan, Harma Turbendian, Danial Vargas, Brian Fonseca, Michael  
628 DiMaria, Anar Shah, Margaret P Ivy, Alex J Barker, Kendall S Hunter, Neil Wilson, D Dunbar Ivy, and  
629 David N Campbell. Aortic stiffness in adolescent Turner and Marfan syndrome patients. *European Journal of*  
630 *Cardio-Thoracic Surgery*, 54(5):926–932, November 2018. ISSN 1010-7940. doi: 10.1093/ejcts/ezy168. URL  
631 <https://doi.org/10.1093/ejcts/ezy168>.
- 632 [37] Andrea Guala, Gisele Teixido-Tura, Jose Rodriguez-Palomares, Aroa Ruiz-Munioz, Lysia Dux-Santoy, Nicolas  
633 Villalva, Chiara Granato, Laura Galian, Laura Gutierrez, Teresa Gonzalez-Alujas, Violeta Sanchez, Alberto  
634 Forteza, David Garcia-Dorado, and Artur Evangelista. Proximal aorta longitudinal strain predicts aortic root  
635 dilation rate and aortic events in Marfan syndrome. *European heart journal*, 2019. URL <https://doi.org/10.1093/eurheartj/ehz191>.
- 637 [38] Junfeng Yan, Ann-Cathrin Lehsau, Benjamin Sauer, Barbara Pieper, Salah A. Mohamed, Bart L. Loeys,  
638 Harry C. Dietz, Lut Van Laer, Andrew S. McCallion, Per Eriksson, Anders Franco-Cereceda, Luc Mertens,  
639 Seema Mital, Salah A. Mohamed, and Gregor Andelfinger. Comparison of biomechanical properties in as-  
640 cending aortic aneurysms of patients with congenital bicuspid aortic valve and Marfan syndrome. *Internation-*  
641 *ational Journal of Cardiology*, 278:65–69, March 2019. ISSN 0167-5273. doi: 10.1016/j.ijcard.2018.11.102. URL  
642 <https://www.sciencedirect.com/science/article/pii/S016752731735074X>.
- 643 [39] Andrea Guala, Jose Rodriguez-Palomares, Lydia Dux-Santoy, Gisela Teixido-Tura, Giuliana Maldonado, Laura  
644 Galian, Marina Huguet, Filipa Valente, Laura Gutiérrez, Teresa González-Alujas, Kevin M. Johnson, Oliver  
645 Wieben, Augusto Sao Avilés, David Garcia-Dorado, and Arturo Evangelista. Influence of Aortic Dilation on the  
646 Regional Aortic Stiffness of Bicuspid Aortic Valve Assessed by 4-Dimensional Flow Cardiac Magnetic Resonance:  
647 Comparison With Marfan Syndrome and Degenerative Aortic Aneurysm. *JACC: Cardiovascular Imaging*, 12(6):  
648 1020–1029, June 2019. ISSN 1936-878X. doi: 10.1016/j.jcmg.2018.03.017. URL <https://www.sciencedirect.com/science/article/pii/S1936878X18303000>.

- 650 [40] Jason Z. Cui, Kevin C. Harris, Koen Raedschelders, Zsuzsanna Hollander, James E. Potts, Astrid De Souza,  
651 Marla Kiess, Bruce M. McManus, Pascal Bernatchez, Leslie A. Raffin, Heidi Paine, Cornelis van Breemen,  
652 George G. S. Sandor, and Mitra Esfandiari. Aortic Dimensions, Biophysical Properties, and Plasma Biomarkers  
653 in Children and Adults with Marfan or Loeys-Dietz Syndrome. *CJC Open*, 3(5):585–594, May 2021. ISSN  
654 2589-790X. doi: 10.1016/j.cjco.2020.12.018. URL [https://www.sciencedirect.com/science/article/pii/  
655 S2589790X20302389](https://www.sciencedirect.com/science/article/pii/S2589790X20302389).
- 656 [41] Mitzi M. van Andel, Vivian de Waard, Janneke Timmermans, Arthur J. H. A. Scholte, Maarten P. van den  
657 Berg, Aeilko H. Zwinderman, Barbara J. M. Mulder, and Maarten Groenink. Aortic distensibility in Marfan  
658 syndrome: a potential predictor of aortic events? *Open Heart*, 8(2):e001775, October 2021. ISSN 2053-3624. doi:  
659 10.1136/openhrt-2021-001775. URL <https://openheart.bmj.com/content/8/2/e001775>. Publisher: Archives  
660 of Disease in childhood Section: Aortic and vascular disease.
- 661 [42] Constance G. Weismann, Joanna Hlebowicz, Anna Åkesson, Petru Liuba, and Katarina Hanseus. Comprehensive  
662 Characterization of Arterial and Cardiac Function in Marfan Syndrome—Can Biomarkers Help Improve Out-  
663 come? *Frontiers in Physiology*, 13, 2022. ISSN 1664-042X. URL [https://www.frontiersin.org/articles/  
664 10.3389/fphys.2022.873373](https://www.frontiersin.org/articles/10.3389/fphys.2022.873373).
- 665 [43] Kelly Cox, Yousi A. Oquendo, David Liang, and Elif Seda Selamet Tierney. Aortic root dilation in adult  
666 patients with Marfan syndrome: Does aortic root stiffness matter? *JTCVS Open*, 10:113–120, June 2022. ISSN  
667 2666-2736. doi: 10.1016/j.xjon.2022.04.011. URL [https://www.sciencedirect.com/science/article/pii/  
668 S2666273622001632](https://www.sciencedirect.com/science/article/pii/S2666273622001632).
- 669 [44] Tomoaki Morioka, Katsuhito Mori, and Masanori Emoto. Is stiffness parameter  $\beta$  useful for the evaluation of  
670 atherosclerosis? ~ its clinical implications, limitations, and future perspectives ~. *Journal of Atherosclerosis and  
671 Thrombosis*, 28(5):435–453, 2021. ISSN 1340-3478. doi: 10.5551/jat.RV17047. URL [https://www.ncbi.nlm.  
672 nih.gov/pmc/articles/PMC8193788/](https://www.ncbi.nlm.nih.gov/pmc/articles/PMC8193788/).
- 673 [45] Takashi Wada, Kentaro Fujishiro, Tsutomu Fukumoto, Sayaka Yamazaki, and Takashi Wada. Relationship  
674 between ultrasound assessment of arterial wall properties and blood pressure. *Angiology*, 48(10):893–900, 1997.  
675 ISSN 0003-3197. doi: 10.1177/000331979704801006. URL <https://doi.org/10.1177/000331979704801006>.  
676 Publisher: SAGE Publications Inc.
- 677 [46] Jun Sugawara, Hidehiko Komine, Koichiro Hayashi, Mutsuko Yoshizawa, Takashi Yokoi, Takeshi Otsuki, Nobu-  
678 take Shimojo, Takashi Miyauchi, Seiji Maeda, and Hirofumi Tanaka. Effect of systemic nitric oxide synthase  
679 inhibition on arterial stiffness in humans. *Hypertension Research*, 30(5):411–415, 2007. ISSN 1348-4214. doi:  
680 10.1291/hypres.30.411. URL <https://www.nature.com/articles/hr200755>. Number: 5 Publisher: Nature  
681 Publishing Group.
- 682 [47] Andrea Guala, Gisele Teixeira-Tura, L. Dux-Santoy, C. Granato, A. Ruiz-Munioz, F. Valente, L. Galian-Gay,  
683 L. Gutierrez, T. Gonzalez-Alujas, K. M. Johnson, O. Wieben, A. Sao Aviles, A. Evangelista, and J. Rodriguez-  
684 Palomares. Decreased rotational flow and circumferential wall shear stress as early markers of descending aorta  
685 dilation in Marfan syndrome: a 4D flow CMR study. *Journal of Cardiovascular Magnetic Resonance*, 21:1–11,  
686 2019. URL <https://doi.org/10.1186/s12968-019-0572-1>.
- 687 [48] Tirone E. David. Aortic Valve Sparing in Different Aortic Valve and Aortic Root Conditions. *Journal  
688 of the American College of Cardiology*, 68(6):654–664, August 2016. doi: 10.1016/j.jacc.2016.04.062. URL  
689 <https://www.jacc.org/doi/abs/10.1016/j.jacc.2016.04.062>. Publisher: American College of Cardiology  
690 Foundation.
- 691 [49] Thierry Sluysmans and Steven D. Colan. Theoretical and empirical derivation of cardiovascular allometric  
692 relationships in children. *Journal of Applied Physiology*, 99(2):445–457, 2005. ISSN 8750-7587. doi: 10.  
693 1152/jappphysiol.01144.2004. URL [https://journals.physiology.org/doi/full/10.1152/jappphysiol.  
694 01144.2004](https://journals.physiology.org/doi/full/10.1152/jappphysiol.01144.2004). Publisher: American Physiological Society.