

Authors:

Wissam Khalife (University of Texas Medical Branch)
Manreet Kanwar (Cardiovascular Institute at Allegheny Health Network)
Jacob Abraham (Providence Heart Institute)
Kevin John (Bangalore Baptist Hospital)
Aiham Albaeni (Division of Cardiovascular Medicine, University of Texas Medical Branch, Galveston, Texas.)
Borui Li (Tufts Medical Center)
Yijing Zhang (Tufts Medical Center)
Van-Khue Ton (Division of Cardiology, Massachusetts General Hospital and Harvard Medical School)
Maya Guglin (Indiana University)
Arthur Garan (Beth Israel Deaconess Medical Center, Harvard Medical School)
Rachna Kataria (Brown University)
Vanessa Blumer (Inova Schar Heart and Vascular)
Gavin Hickey (University of Pittsburgh Medical Center)
Song Li (University of Washington Medical Center)
Saraschandra Vallabhajosyula (Warren Alpert Medical School of Brown University)
Shashank Sinha (Inova Fairfax Medical Center)
Jaime Hernandez-Montfort (Baylor Scott and White Health)
Elric Zweck (Medical Faculty, Heinrich Heine University Düsseldorf)
Chloe kong (The cardiovascular center, Tufts medical center)
Maryjane Farr (The University of Texas Southwestern Medical Center)
Justin Fried (New York-Presbyterian Hospital/Columbia University Irving Medical Center)
Shelley Hall (Baylor University Medical Center)
Neil Harwani (Tufts Medical Center)
Claudius Mahr (University of Washington Medical Center)
Sandeep Nathan (University of Chicago Medicine)
Paavni sangal (The cardiovascular center, tufts medical center)
Andrew Schwartzman (Maine Medical Center)
Arvind Bhimaraj (Houston Methodist Hospital)
Justin Kim (The George Washington University Medical Faculty Associates)
Alec Vishnevsky (Thomas Jefferson University Hospital)
Esther Vorovich (Northwestern University Feinberg School of Medicine)
karol Walec (Tufts Medical Center)
peter zazzali (Tufts Medical Center)
Mohit Pahuja (Medstar Georgetown University/Washington Hospital Center)
Daniel Burkhoff (Cardiovascular Research Foundation)
Navin Kapur (Tufts Medical Center)

Association of Hemo-Metabolic Trajectory and Cardiogenic Shock Mortality: Analysis from the CSWG Registry

Wissam Khalife, MD¹; Manreet K Kanwar, MD²; Jacob Abraham, MD³; Kevin John, MD⁴; Aiham Albaeni, MD¹; Borui Li, MA⁴; Yijing Zhang, MA⁵; Van-Khue Ton, MD, PhD⁶; Maya Guglin, MD, PHD⁷; Arthur R Garan MD⁸; Rachna Kataria, MD⁹; Vanessa Blumer, MD¹⁰; Gavin W Hickey, MD¹¹; Song Li, MD¹²; Saraschandra Vallabhajosyula, MD¹³; Shashank S Sinha, MD¹⁴; Jaime Hernandez-Montfort, MD¹⁵; Elric Zweck, MD¹⁶; Chloe Kong, MA⁴; MaryJane Farr, MD¹⁷; Justin Fried, MD¹⁸; Shelley Hall, MD¹⁹; Neil M Harwani, MS⁴; Claudius Mahr, MD²⁰; Sandeep Nathan, MD²¹; Paavni Sangal, MPH⁴; Andrew Schwartzman, MD²²; Arvind Bhimaraj, MD²³; Ju Kim, MD²³; Alec A Vishnevsky, MD²⁴; Esther Vorovich, MD²⁵; Karol D. Walec, BS⁴; Peter Zazzali, MS, MPH⁴; Mohit Pahuja, MD⁵; Daniel Burkhoff, MD, PhD²⁶; Navin K Kapur, MD⁴.

¹University of Texas Medical Branch, Galveston, TX

²Cardiovascular Institute at Allegheny Health Network, Pittsburgh, PA

³Center for Cardiovascular Analytics, Providence Heart Institute, Portland, ON

⁴The Cardiovascular Center, Tufts Medical Center, Boston, MA

⁵University of Oklahoma Health Science Center, Oklahoma City, Ok

⁶Massachusetts General Hospital, Boston, MS

⁷Health Advanced Heart and Lung Care, Indianapolis, Indiana

⁸Beth Israel Deaconess Medical Center, Boston, MA

⁹Brown University, Lifespan Cardiovascular Center, Providence, Rhode Island

¹⁰Heart and Vascular Institute, Cleveland Clinic, Cleveland, Ohio

¹¹University of Pittsburgh Medical Center, Pittsburgh, PA

¹²Medical City Healthcare, Dallas, TX

¹³Lifespan Cardiovascular Institute, Providence, RI

¹⁴Inova Heart and Vascular Institute, Inova Fairfax Campus, Falls Church, VA

¹⁵Baylor Scott & White Health, Advanced Heart Failure Program Clinic, Temple, TX

¹⁶Heinrich Heine University, Dusseldorf, Germany

¹⁷UT Southwestern, Dallas, TX

¹⁸Columbia University Irving Medical Center, NY

medRxiv preprint doi: <https://doi.org/10.1101/2024.01.05.23300478>; this version posted January 9, 2024. The copyright holder for this preprint (which was not certified by peer review) is the author/funder, who has granted medRxiv a license to display the preprint in perpetuity. It is made available under a [CC-BY-NC-ND 4.0 International license](#).

¹⁹Baylor Scott & White Advanced Heart Failure Clinic, Dallas, TX

²⁰University of Washington Medical Center, Seattle, Washington

²¹University of Chicago, Chicago, IL

²²Maine Medical Center, Portland, ME

²³Houston Methodist Research Institute, Houston, TX

²⁴Thomas Jefferson University Hospital, Philadelphia, PA

²⁵Northwestern Medicine, Chicago, IL

²⁶Cardiovascular Research Foundation, New York, NY

Short title: Hemo-metabolic trajectory and Shock Mortality

CORRESPONDING AUTHOR

Navin K Kapur, MD

The CardioVascular Center, Section of Cardiovascular Medicine

Department of Medicine, Tufts University School of Medicine

800 Washington Street, Box No 80, Boston, Massachusetts 02111

Email: nkapur@tuftsmedicalcenter.org

Total word count: 9621.

ABSTRACT

Background: Cardiogenic shock (CS) is as a hemodynamic disorder that can progress to systemic metabolic derangements. Prior studies have reported hemodynamic parameters associated with mortality in limited cohorts or at single time points. Hemodynamic trajectories have not been described.

Objectives: We studied the association between hemodynamics and in-hospital mortality in patients with CS due to heart failure (HF-CS) and acute myocardial infarction (AMI-CS).

Methods: Using data from the large multicenter Cardiogenic Shock Working Group (CSWG) registry, we analyzed hemo-metabolic data obtained at the time of pulmonary artery catheter (PAC) insertion (baseline) and at PAC removal or death (final). Univariable regression analyses for prediction of in-hospital mortality were conducted for baseline and final hemo-metabolic values, as well as the interval change (delta-P), and analyzed based on CS etiology and survival status.

Results: 2,260 patients with PAC data were included (70% male, age 61 ± 14 , 61% HF-CS, 27% AMI-CS). In-hospital mortality was higher in the AMI-CS group (40.1%) compared to HF-CS (22.4%), $p < 0.001$). In the **HF-CS** cohort, survivors exhibited lower right atrial pressure (RAP), pulmonary artery pressures (PAP), cardiac output/index (CO/CI), lactate and higher blood pressure (BP) than non-survivors at baseline. In this cohort, during hospitalization, improvement in metabolic (AST, lactate), BP, hemodynamic (RAP, PAPI, PA compliance for right sided profile and CO/CI for left sided profile), had association with survival. In the **AMI-CS** cohort, a lower systolic BP and higher PAP were associated with odds of death at baseline. Improvement in metabolic (lactate), BP, hemodynamic (RAP, PAPI for right-sided profile and CO/CI for left-sided profile) were associated with survival.

Conclusions: In a large contemporary CS registry, few hemo-metabolics at baseline determined survival in AMI-CS; rather hemodynamic trajectories had a strong association with outcomes in both cohorts. These findings suggest the importance of monitoring hemo-metabolic trajectories to tailor management in patients with CS.

Non-standard Abbreviations and Acronyms

AMI-CS	acute myocardial infarction cardiogenic shock
API	aortic pulsatility index
AUC	area under the curve
CI	cardiac index
CO	cardiac output
CPO	cardiac power output
CS	cardiogenic shock
CSWG	Cardiogenic Shock Working Group
CVP	central venous pressure
DBP	diastolic blood pressure
Delta-P	change in parameter
DPG	diastolic pulmonary gradient
ECMO	Extracorporeal membrane oxygenation
HF-CS	heart failure cardiogenic shock
HR	heart rate
HT	heart transplant
IABP	intra-aortic balloon pump
LVAD	left ventricular assist device
MAP	mean arterial pressure
MCS	mechanical circulatory support
PAC	pulmonary artery catheter
PADP	pulmonary artery diastolic pressure
PAPi	pulmonary artery pulsatility index
PCWP	pulmonary capillary wedge pressure

PVR	pulmonary vascular resistance
RAP	right atrial pressure
RVSWI	right ventricular stroke work index
SCAI	Society for Cardiovascular Angiography and Intervention
SBP	systolic blood pressure
SV	stroke volume
SVI	stroke volume index
SVR	systemic vascular resistance
TPG	transpulmonary gradient

What is New?

- While previous cardiogenic shock studies have reported hemodynamic parameters associated with mortality in limited cohorts or at single time points, we used data from a large multi-center registry to analyze hemodynamic trajectory in patients with cardiogenic shock from pulmonary artery catheter insertion to removal.
- We found that few baseline hemodynamic parameters were predictive of survival in AMI-CS. However, in both AMI-CS and HF-CS, the hemodynamic trajectory was strongly associated with outcomes.

What Are the Clinical Implications?

- Our findings suggest that targeted interventions in patients with cardiogenic shock impact clinical outcomes independently of baseline hemodynamic derangement and highlight the importance of invasive hemodynamic monitoring to tailor management in these patients.

INTRODUCTION

Cardiogenic shock (CS) is a syndrome of primary cardiac dysfunction that results in inadequate cardiac output and hypotension.(1) If inadequately treated, these initial hemodynamic abnormalities result in a complex cascade of tissue hypoperfusion and systemic injury that precipitate end-organ failure and metabolic acidosis.(2) Clinical studies have demonstrated that therapies targeting hemodynamic disturbances, including acute mechanical circulatory support (MCS) devices, are ineffective if employed non-selectively during late stages of shock, when tissue injury and acidosis are irreversible. The Society for Cardiovascular Angiography and Intervention (SCAI) recently revised a staging scheme of CS severity to reflect the dynamic continuum of hemodynamic and metabolic disturbances that occur during CS and its treatment.(3,4)

Hemodynamic data obtained using a pulmonary artery catheter (PAC) allow for invasive measurement of cardiac filling pressures, measurement of cardiac output (CO) and other parameters.(5) These measures, interpreted together, provide a robust assessment of left and right heart performance that can be used to make prognostic assessments.(6,7) More importantly, PAC is maintained for several days to assess improvement or deterioration along the hemo-metabolic cascade which then impact decisions to escalate or de-escalate MCS therapies. Hemodynamic parameters including RAP, mean arterial pressure (MAP) left ventricular end diastolic pressure (LVEDP), PAPI obtained at baseline have been associated with outcomes in CS.(8-10)

While previous studies have examined the prognostic impact of invasive hemodynamics assessed at a single time point, hemodynamic trajectories in CS during the course of hospitalization and their association with clinical outcomes in real world data have not been described. The insights gained from such an analysis could inform clinicians about which changes in hemodynamic parameters are most strongly associated with outcomes in CS. The aim of this study is to characterize the prognostic significance of hemodynamic parameters and their trajectory using PAC-derived hemodynamics recorded in the Cardiogenic Shock Working Group (CWSG) registry.

METHODS

Data Source

It is made available under a [CC-BY-NC-ND 4.0 International license](https://creativecommons.org/licenses/by-nc-nd/4.0/).

The CSWG is an academic research consortium comprised of 34 community and university-affiliated hospitals across the United States. For this analysis, 20 sites contributing registry data between 2016 and 2022 were included. The registry includes a standardized set of data elements (patients, procedural and outcomes) pre-defined by principal investigators and collected retrospectively. CS diagnosis was physician-adjudicated at each site and defined as a sustained episode of one out of the following: systolic blood pressure (SBP) < 90 mmHg for at least 30 minutes; use of vasoactive agents; a CI < 2.2 L/min/m² in the absence of hypovolemia determined to be secondary to cardiac dysfunction; or use of one or more temporary MCS devices for clinically-suspected CS. Treatments for CS were left to the discretion of the clinicians at each center and were not guided by a prescribed algorithm.

Patient laboratory and hemodynamic data were collected at multiple time points, including closest to time of admission (baseline), at PAC insertion, at PAC removal or death. The PAC-derived hemodynamic parameters include both right heart parameters (RAP, pulmonary artery systolic, diastolic and mean pressure or PASP, PADP and mPAP respectively, SVO₂) and left heart parameters (PCWP, cardiac output and cardiac index; CO and CI, respectively). Secondary hemodynamic parameters (e.g. transpulmonary gradient or TPG, diastolic pulmonary gradient or DPG, PAPI, aortic power index (API), RAP/ PCWP ratio, CPO, right ventricular stroke work index RVSWI etc.) were calculated from the collected data, as possible (Supplement Table 1). Additional data, including vital signs (SBP, mean arterial pressure or MAP and heart rate or HR) as well as laboratory data (including lactate, pH, metabolic profile etc.) were also collected. The SCAI shock stage was retrospectively assigned as previously described.⁽¹¹⁾ Patient outcomes were reported as survival at the time of hospital discharge including native heart survival or heart replacement therapies (durable LVAD or heart transplantation). Quality assurance was achieved through adjudication at each site by the respective clinical coordinators and principal investigator. Values were centrally audited and screened by the CSWG research team for any discrepancies or major outliers and resolved with submitting site.

Study Population

Between 2016 and 2022, data from 2,260 CS patients with PAC were collected.

CS etiology was reported by each site as either due to AMI or HF. AMI-CS was defined as any primary diagnosis of either non-ST-segment elevation (NSTEMI) or ST-segment elevation (STEMI). HF-CS was defined as any primary diagnosis of acute on chronic HF, or de novo HF, not otherwise related to AMI. Patients with post-cardiotomy CS, primary RV shock or unspecified etiology were considered as “others”.

Statistical Analysis

Baseline clinical characteristics for HF-CS and AMI-CS cohorts were reported as percentages for categorical variables and as means and standard deviation for continuous variables. The hemodynamic parameters were reported as means and standard deviation at PAC insertion (as **baseline dataset**) and PAC removal or patient death (**final dataset**), stratified by etiology of CS (HF-CS vs AMI-CS) and by survival status at hospital discharge (survivor vs non-survivor). The change in each hemodynamic parameter from PAC insertion to PAC removal, collectively referred to as the ‘**delta P**’ (change in parameter), was also similarly reported. If a patient went on receive LVAD or heart transplantation, final dataset was counted as the last dataset available prior to surgery. For continuous variables with normal distributions, the p-values were calculated using the student’s t-test, and for variables with skewed distributions, the p-values were calculated using the Wilcoxon test. Categorical variables were expressed as frequency and compared using chi-square tests of independence. Univariable logistic regression was performed for each hemodynamic and metabolic variable for mortality association. Odds ratios, 95% CI, and p values were reported. Statistical analyses were performed using SAS 9.4, p values <0.05 were considered significant for all statistical tests.

RESULTS

Baseline characteristics

During the study period, the CSWG registry included data from 3,524 patients with CS of whom, 2,260 (64%) patients underwent PAC placement and constitutes the study population for this analysis. These include 1,386 (61%) with HF-CS; 604 (27%) with AMI-CS patients and 270 patients classified as ‘others’ (Figure 1 Supplement). Patient characteristics of the AMI-CS and HF-CS study populations are summarized in **Table 1**. Compared to the AMI-CS cohort, patients in the HF-CS cohort were

younger (mean age 60.1 vs. 66 years, $p<0.001$) more likely to be black (20.6% vs. 7.1%, $p<0.001$), have a history of atrial fibrillation/flutter, chronic kidney disease, valvular disease, and prior CABG (all $p<0.001$).

Hemo-metabolic characteristics

Compared to the AMI-CS cohort, patients in the HF-CS cohort were more likely to present with a higher heart rate (95 vs 89 bpm, $p=0.01$), serum creatinine (2.0 vs 1.7 mg/dL, $p<0.001$) and bicarbonate (23.5 vs 21.7 mg/dL, $p<0.001$), but a lower lactate (3.9 vs. 4.7 mmol/L $p<0.03$). **(Table 2)** For the left-sided hemodynamics standpoint, patients in HF-CS had a higher PCWP (23.2 vs. 21.5 mmHg, $p<0.001$), PADP (26.4 vs. 23.1 mmHg, $p<0.001$) and lower CI (2.0 vs 2.2 L/min/m², $p=0.01$) at baseline, compared to AMI-CS. (Supplement Table 2) For the right-sided hemodynamic parameters, HF-CS pts had a higher RAP, PAP and PAPI compared to MI-CS at baseline (all $p<0.01$). (Table 2) When comparing the baseline and final dataset for the AMI-CS cohort, CO, CI, PAPI and RVSWi increased while RAP and PAP decreased significantly. For the HF-CS cohort, the final dataset had a significantly lower PCWP, PAP, RAP and a higher CO/CI, CPO, PAPI and RVSWi compared to baseline.

PAC use and in-hospital clinical outcomes

Median time to PAC insertion was 0.9 days; it was inserted later (1.1 vs 0.4 days, $p<0.0001$) but maintained for a longer duration in patients with HF-CS than AMI-CS (6.3 vs 4.7 days, $p<0.0001$). Median time to the final hemodynamic dataset was 8.15 (IQR 4.02-15.97) days for the total cohort and 7.42 (IQR 3.04-13.97) days in those who died. The use of vasoactive drugs throughout hospitalization was similar between HF-CS and AMI-CS. HF-CS patients were less likely than AMI-CS patients to be treated with temporary MCS (IABP, Impella CP, or multiple devices) (53.9% vs 78.8%, $p<0.001$). Overall, in-hospital mortality in the overall cohort was 27.8% ($n=553$); 22.4% in HF-CS patients ($n=311$) and 40.1% in AMI-CS patients ($n=242$) **(Table 3)**. Heart replacement therapy occurred in 371 (26.8%) of patients in the HF-CS group compared to 37 (6.1%) in AMI-CS group ($p <0.0001$).

Hemodynamic profiles and survival

In unadjusted analysis (**Table 4**), survivors in the HF-CS cohort exhibited lower HR, RAP, PAP, CO, CI, TPG and higher BP (systolic, diastolic, and mean) than non-survivors at baseline. At the time of final dataset, survivors had a lower PAP, PCWP and RAP and a higher BP, CO, CI, CPO, PAPI and PA sat compared to non-survivors. Metabolic markers of lactate, BUN and creatinine were higher for non-survivors, both at baseline and final dataset. During the course of hospitalization, significant improvements from baseline to PAC removal were observed in BP, filling pressures, and CO amongst survivors. (**Supplement Table 3 and 4, Figure 1**) For example, for a 1 mm Hg drop in RAP between baseline and final dataset, there was 0.06 lower odds of mortality; while for every 1 L/min/m² increase in CI, the odds of survival improved by 0.44. (**Supplement Table 5**)

In the AMI-CS cohort a lower SBP and higher PAP were associated with odds of death at baseline. (**Table 5**) For the final dataset, markers that had the greatest influence on mortality included lower BP, CO, CI and a higher RAP and PAP. During the course of their hospitalization, significant improvements from baseline to PAC removal were observed in BP and CO/ CI amongst survivors. Metabolic markers of lactate, BUN and creatinine were higher for non-survivors, both at baseline and final dataset

Hemodynamic trajectories and survival:

From a metabolic standpoint, lactate, AST, and creatinine improved over hospital course in both AMI- and HF-CS survivors. (**Figure 1A**) Improving lactate in the delta-P assessment had a significant association with survival amongst the metabolic parameters, regardless of etiology. Hemodynamics reflective of end-organ perfusion (i.e., MAP, CI, CPO), RV function (PAPI) and congestion (CVP, PCWP) demonstrate strikingly different trajectories between survivors and non-survivors in both cohorts. While MAP ranges were similar for survivors at baseline and final dataset, it dropped significantly in non-survivors for both AMI- and HF-CS. (**Figure 1B**) CI increased amongst survivors in both HF-CS and AMI-CS groups along the course of hospitalization. As a result, CPO (product of MAP and CO), increased over the course of hospitalization among survivors while it decreased or was unchanged amongst non-survivors. Notably, HF-CS survivors had a lower baseline CPO compared to non-survivors, whose CPO decreased sharply during the course of hospitalization. (**Figure 1C**) Improvement in PAPI in the delta-P cohort was associated

with survival in both AMI- and HF-CS. **(Figure 1D)** Survivors in both CS cohorts had similar final values of PCWP and CVP despite HF-CS patients starting with higher absolute PCWP and CVP. **(Figure 1E)** In the HF-CS cohort, non-survivors had higher RAP at PAC insertion (15.4 vs 14.2 mm Hg, $p=0.04$) and had less reduction in the same during hospitalization (-1.0 vs -4.4, $p<0.0001$), compared to survivors. Improvement in BP (systolic, diastolic and MAP) in the delta-P cohort was significantly associated with survival, regardless of etiology. **(Figure 1F)**

DISCUSSION

In this analysis of real-world data from the CSWG registry, we studied associations among hemodynamic and metabolic parameters obtained at PAC insertion (baseline) and removal (final) and interval change in these parameters (delta-P) with in-hospital mortality. We then compared the hemodynamic profiles and trajectories between survivors and non-survivors using univariable analysis in both AMI- and HF-CS. These analyses support several important observations: (i) Amongst patients with HF-CS, survivors had lower baseline CO/CI, RAP, PAP, lactate and higher BP than non-survivors. During the course of their hospitalization, improvement in metabolic (AST and lactate), BP (systolic, diastolic and MAP), hemodynamic (RAP, PAPI, PA compliance for right-sided profile and CO/CI and CPI for left sided profile) had the highest association with survival (ii) Most invasive hemodynamic parameters were not associated with odds of mortality in AMI-CS at baseline. Improvement in metabolic (lactate), BP (systolic, diastolic and mean), hemodynamic (RAP and PAPI for right-sided profile and CO/CI for left-sided profile) were associated with survival (iii) Hemodynamics indicative of end-organ perfusion and congestion demonstrate strikingly different trajectories between survivors and non-survivors in both cohorts. Our findings suggest that hemodynamically guided interventions in CS impact clinical outcomes independently of baseline hemodynamic risk, hence highlighting the importance of the following hemodynamic trajectories to tailor management. To our knowledge, this is the only analysis of hemodynamic trajectories and their impact on mortality in a cohort of patients with CS due to both HF and AMI.

Early hemodynamic assessment is a cornerstone of the therapeutic approach to CS.^(7,11) Recent SCAI staging of CS correlated SCAI stage A (at risk) as cardiac index (CI) ≥ 2.5 L/min/m² and right atrial pressure (RAP) < 10 mm Hg; SCAI stage B (beginning) as CI ≥ 2.2 ; and SCAI stage C (Classic) as CI < 2.2 L/min/m², pulmonary

capillary wedge pressure (PCWP) >15 mm Hg, RAP/PCWP ≥ 0.8 , pulmonary artery Pulsatility index (PAPi) <1.85 and cardiac power output (CPO) ≤ 0.6 W.(4) In addition, several hemodynamic parameters have been identified previously as strong predictors of in-hospital mortality. The Critical Care Cardiology Trials Network recently reported hemodynamics parameters within 24 hours of admission associated with mortality, which included low MAP, systemic vascular resistance (SVR) and PAPi, along with elevated RAP and RAP/ PCWP ratio.(12) In the SHOCK trial registry of 541 patients with CS, CPO and cardiac power index (CPI) were the strongest independent hemodynamic parameters of in-hospital mortality.(13) A CPO value of ≤ 0.53 Watts predicted in-hospital mortality with a c-index of 0.69 and positive and negative predictive values of 59% and 71%, respectively. A sub study of CardShock that examined those with PAC was also demonstrative of the predictive value of early hemodynamic measurements: CI (OR 0.22, 95% 0.09--0.52), CPI (OR 0.347, 95% 0.20--0.60) and stroke-volume index (OR 0.88, 95% 0.82--0.94) were the strongest predictors of 30-day mortality.(14) In our analysis, baseline left sided CPO was not predictive of survival in either HF- or AMI-CS. However, CPO increased over the course of hospitalization among survivors in HF-CS while it decreased or was unchanged amongst non-survivors.

Mean RAP has been identified as another sensitive hemodynamic marker in CS.(11) A retrospective study of 545 patients with CS found RAP ≥ 14 mmHg to be associated with higher mortality rates and end-organ dysfunction as identified by elevated lactate, creatinine, liver enzymes. An earlier study in patients with acutely decompensated HF who underwent PAC insertion in the ESCAPE (Evaluation Study of Congestive Heart Failure and Pulmonary Artery Catheterization Effectiveness) trial reported that final PCWP and RAP were stronger predictors of 6-month outcomes (death, need for HT or LVAD) than CI. A follow-up ESCAPE sub-analysis identified API as a significant predictor of 6-months outcomes, but not final CI, CPO, or PAPi.(15) We have previously reported that baseline RAP ≥ 12 mm Hg alone or in combination with PCWP ≥ 18 mm Hg was associated with higher mortality than isolated elevation in PCWP or normal filling pressures (16,17). While baseline RAP was not predictive of outcome in the current study, final RAP and change in RAP were strong predictors. In fact, survivors in both CS cohorts had similar final values of PCWP and CVP despite HF-CS patients starting with higher absolute PCWP and CVP. Lastly, non-survivors had higher CVP at PAC insertion and had less reduction in PCWP and

CVP during hospitalization, compared to survivors. The discrepancy in the present findings from prior studies likely relate to the differences in shock severity and treatment intensity (SCAI A in ESCAPE versus SCAI C-E in CSWG) and the larger numbers of patients enrolled in the most recent version of the CSWG registry employed in the current study.

Another important hemodynamic indicator of RV failure in patients with acute inferior MI is PAPI.(18,19) A PAPI value of ≤ 0.9 carries a specificity of 98.3% and a sensitivity of 100% to predict in-hospital mortality in patients with inferior MI undergoing emergent PCI. By contrast, a PAPI value of < 1.85 predicts RV failure after isolated LVAD implantation with 94% sensitivity and 81% specificity.(20) In our analysis, baseline PAPI was not predictive of survival in either etiology by an improvement in PAPI was significantly associated with survival in the HF-CS. This may be reflective of the higher rates of MCS utilization and longer duration of PAC monitoring in this cohort.

Left ventricular end diastolic pressure (LVEDP) is closely related to diastolic wall tension and is closely correlated with PCWP. In the Pexelizumab in Conjunction With Angioplasty in Acute Myocardial Infarction (APEX-AMI) study, an LVEDP greater than 22 mmHg was associated with higher rates of CS (4.6% vs 1.7%; $P < 0.001$) and death (4.1% vs 2.2%; $P = 0.014$) at 90 days.(21) We did not record LVEDP in our registry but PADP (but not PCWP) was associated with mortality at baseline and final datasets in both AMI-CS and HF-CS. Of note, PCWP data was only available in about one-third of patients while PADP was recorded in all patients, which may explain this discrepancy.

Baseline cardiac output was surprisingly lower in survivors than in non-survivors in the HF-CS cohort (4.0 ± 1.4 vs 4.4 ± 1.6 L/min, $p = 0.009$), while on PAC removal it was higher in survivors (5.3 ± 1.1 vs 4.7 ± 1.6 L/min, $p = 0.001$). This paradoxical finding could potentially be explained if patients with HF-CS with lower baseline CO were more likely to receive more aggressive or urgent treatment. Alternatively, patients with higher CO at PAC placement might have greater exposure to inotropes or MCS and experience treatment-related complications.

There are important limitations to our findings. First, we only include patients who received a PAC, which could introduce selection bias as patients with early shock may be managed without PAC, and patients with severe shock may die prior to PAC placement or treated with palliative measures. Second, criteria for use of PAC or

treatment of CS, including the use of MCS, are not standardized. Thus, we cannot correlate hemodynamic trajectory with specific interventions. Third, in patients who had MCS before PAC insertion (31% HF-CS, 32.6% AMI-CS), baseline hemodynamics could underestimate the severity of CS at baseline. Similarly, the timing of final dataset could be data derived prior to proceeding with advanced options or death, which would significantly impact the data. Fourth, HF-CS was about twice as prevalent as AMI-CS (approximately two thirds to one third ratio). Hence, the analyses of the AMI-CS subset as compared to the HF-CS subset may be underpowered. Finally, the retrospective study design limits our ability to control for residual confounding.

CONCLUSIONS

Data from a large, multicenter registry of patients with CS that undergo placement of a PAC indicate that clinical outcomes are not strongly associated with initial hemodynamics (especially in AMI-CS) which, in some cases can actually be misleading. This highlights the importance of monitoring and tracing the hemometabolic trajectory to tailor management. Further research is needed to define treatment pathways for improving hemodynamic and metabolic derangements in CS caused by HF and AMI.

SOURCES OF FUNDING

This work was supported by institutional grants from Abiomed Inc, Boston Scientific Inc, Abbott Laboratories, Getinge Inc, and LivaNova Inc to Tufts Medical Center. The sponsors had no input on collection, analysis, and interpretation of the data, nor in the preparation, review, or approval of the manuscript

DISCLOSURES

Dr. Kapur has received consulting honoraria and institutional grant support from Abbott Laboratories, Abiomed Inc, Boston Scientific, Medtronic, LivaNova, Getinge, and Zoll. Dr. Kanwar has served on the advisory board for Abiomed Inc. Dr. Sinha has served as a consultant for Abiomed Inc. Dr. Garan has served as a consultant for NuPulseCV; has served on the scientific advisory board for Abiomed; and is a recipient

medRxiv preprint doi: <https://doi.org/10.1101/2024.01.05.23300478>; this version posted January 9, 2024. The copyright holder for this preprint (which was not certified by peer review) is the author/funder, who has granted medRxiv a license to display the preprint in perpetuity. It is made available under a [CC-BY-NC-ND 4.0 International license](#)

of research support from Verantos and Abbott. Dr. Hernandez-Montfort has served as a consultant for Abiomed Inc. Dr. Abraham has served as a consultant for Abbott Laboratories and Abiomed Inc. Dr. Nathan has received consulting honoraria from Abiomed, Getinge, and CSI. Dr. Hall has served as a consultant to Abiomed, Abbott, and Medtronic. Dr. Mahr has served as a consultant to Abbott, Abiomed, and Syncardia. Dr. Burkhoff has received an unrestricted, educational grant from Abiomed Inc. All other authors have reported that they have no relationships relevant to the contents of this paper to disclose.

REFERENCES

1. Van Diepen S, Katz JN, Albert NM, Henry TD, Jacobs AK, Kapur NK, Kilic A, Menon V, Ohman M, Sweitzer N, et al. Contemporary Management of Cardiogenic Shock: A Scientific Statement From the American Heart Association. *Circulation* 2017;136:e232-e268.
2. Vallabhajosyula S, Dunlay SM, Prasad A, Kashani K, Sakhuja A, Gersh B, Jaffe AS, Holmes DR, Barness GW. Acute Noncardiac Organ Failure in Acute Myocardial Infarction With Cardiogenic Shock. *J Am Coll Cardiol* 2019;73:1781-1791.
3. Baran DA, Grines CL, Bailey S, Burkhoff D, Hall SA, Henry TD, Hollenberg SM, Kapur NK, O'Neill W, Ornato JP, et al. SCAI clinical expert consensus statement on the classification of cardiogenic shock: This document was endorsed by the American College of Cardiology (ACC), the American Heart Association (AHA), the Society of Critical Care Medicine (SCCM), and the Society of Thoracic Surgeons (STS) in April 2019. *Catheter Cardiovasc Interv*. 2019;94(1):29-37.
4. Naidu SS, Baran DA, Jentzer JC, Hollenberg SA, Diepen Sv, Basir MB, Grines CL, Diercks DB, Hall S, Kapur NK, et al. SCAI SHOCK Stage Classification Expert Consensus Update: A Review and Incorporation of Validation Studies: This statement was endorsed by the American College of Cardiology (ACC), American College of Emergency Physicians (ACEP), American Heart Association (AHA), European Society of Cardiology (ESC) Association for Acute Cardiovascular Care (ACVC), International Society for Heart and Lung Transplantation (ISHLT), Society of Critical Care Medicine (SCCM), and Society of Thoracic Surgeons (STS) in December 2021. *J Am Coll Cardiol* 2022;79:933-946.
5. Van Diepen S, Katz JN, Albert NM, Henry DT, Jacobs AK, Kapur NK, Kilic A, Menon V, Ohman EM, Sweitzer NK, et al. Contemporary management of cardiogenic shock: a scientific statement from the American Heart Association. *Circulation* 2017;136:e232-e268.
6. Garan AR, Kanwar M, Thayer KL, Whitehead E, Zweck E, Hernandez-Montfort J, Mahr C, Haywood JL, Harwani NM, Wencker D, et al. Complete Hemodynamic Profiling With Pulmonary Artery Catheters in Cardiogenic

Shock Is Associated With Lower In-Hospital Mortality. *JACC Heart failure* 2020;8:903-913.

7. Kanwar MK, Blumer V, Zhang Y, Sinha SS, Garan AR, Hernandez-Montfort J, Khalif A, Hickey GW, Abraham J, Mahr C, et al. Pulmonary Artery Catheter Use and Risk of In-hospital Death in Heart Failure Cardiogenic Shock. *J Card Fail*. 2023;29:1234-1244.
8. Menon V, Slater JN, White HD, Sleeper LA, Cocke T, Hochman JS. Acute myocardial infarction complicated by systemic hypoperfusion without hypotension: report of the SHOCK trial registry. *Am J Med* 2000;108:374-80.
9. Hochman JS. Cardiogenic shock complicating acute myocardial infarction: expanding the paradigm. *Circulation* 2003;107:2998-3002.
10. Jain P, Thayer KL, Abraham J, Everett KD, Pahuja M, Whitehead EH, Schwartz BP, Lala A, Sinha SS, Kanwar MK, et al. Right Ventricular Dysfunction Is Common and Identifies Patients at Risk of Dying in Cardiogenic Shock. *J Card Fail*. 2021;27:1061-1072.
11. Thayer KL, Zweck E, Ayouty M, Garan AR, Hernandez-Montfort J, Mahr C, Morine KJ, Newman S, Jorde L, Haywood JL, et al. Invasive Hemodynamic Assessment and Classification of In-Hospital Mortality Risk Among Patients With Cardiogenic Shock. *Circ Heart Fail* 2020;13:e007099.
12. Berg DD, Kaur G, Bohula EA, Baird-Zars VM, Alviar CL, Barnett CF, Barsness GW, Burke JA, Chaudhry SP, Chonde M, et al. Prognostic significance of haemodynamic parameters in patients with cardiogenic shock. *Eur Heart J Acute Cardiovasc Care* 2023;12:651-660.
13. Fincke R, Hochman JS, Lowe AM, Menon V, Slater JN, Webb JG, LeJemtel HT, Cotter G. Cardiac power is the strongest hemodynamic correlate of mortality in cardiogenic shock: a report from the SHOCK trial registry. *J Am Coll Cardiol* 2004;44:340-8.
14. Sionis A, Rivas-Lasarte M, Mebazaa A, Tarvasmaki T, Sans-Rosello J, Tolppanen H, Varpula M, Jurkko R, Barnaszewski M, Silva-Cardoso J, et al. Current Use and Impact on 30-Day Mortality of Pulmonary Artery Catheter in Cardiogenic Shock Patients: Results From the CardShock Study. *J Intensive Care Med* 2020;35:1426-1433.

15. Belkin MN, Shah J, Neyestanak ME, Burkhoff D, Grinstein J. Should We Be Using Aortic Pulsatility Index Over Cardiac Power Output in Heart Failure Cardiogenic Shock? *Circ Heart Fail*. 2022;15 (7):e009601.
16. Tongers J, Sieweke J-T, Kühn C, Napp LC, Flierl U, Röntgen P, Schmitto JD, Sedding DG, Haverich A, Bauersachs J, et al. Early Escalation of Mechanical Circulatory Support Stabilizes and Potentially Rescues Patients in Refractory Cardiogenic Shock. *Circ Heart Fail*. 2020;13(3):e005853.
17. Giacoppo D, Gargiulo G, Aruta P, Capranzano P, Tamburino C, Capodanno D. Treatment strategies for coronary in-stent restenosis: systematic review and hierarchical Bayesian network meta-analysis of 24 randomised trials and 4880 patients. *Bmj*. 2015;351:h5392.
18. Tehrani BN, Truesdell AG, Sherwood MW, Desai S, Tran HA, Epps KC, Singh R, Psocka M, Shah P, Cooper LB, et al. Standardized team-based care for cardiogenic shock. *J Am Coll Cardiol*. 2019;73:1659-1669.
19. Korabathina R, Heffernan KS, Paruchuri V, Patel AR, Mudd JO, Prutkin JM, Orr NM, Weintraub A, Kimmelstiel CD, Kapur NK. The pulmonary artery pulsatility index identifies severe right ventricular dysfunction in acute inferior myocardial infarction. *Catheter Cardiovasc Interv*. 2012;80:593-600.
20. Kang G, Ha R, Banerjee D. Pulmonary artery pulsatility index predicts right ventricular failure after left ventricular assist device implantation. *J Heart Lung Transplant* 2016;35:67-73.
21. Bagai A, Armstrong PW, Stebbins A, Mahaffey KW, Hochman JS, Weaver WD, Patel MR, Granger CB, Lopes RD. Prognostic implications of left ventricular end-diastolic pressure during primary percutaneous coronary intervention for ST-segment elevation myocardial infarction: Findings from the Assessment of Pexelizumab in Acute Myocardial Infarction study. *Am Heart J* 2013;166:913-9.

TABLES

- Table 1: Baseline characteristics of patient population by cardiogenic shock etiology. Patients with shock due to causes other than HF and AMI are not summarized as a separate group due to the small number (n=270).
- Table 2: Baseline and final hemo-metabolic variables in the AMI-CS and HF-CS
- Table 3: In hospital outcomes and interventions in AMI-CS and HF-CS patients.
- Table 4: Univariable analysis of hemo-metabolic profile in the HF-CS cohort comparing survivors and non-survivors, at baseline and final dataset.
- Table 5: Univariable analysis of hemo-metabolic profile in the AMI-CS cohort comparing survivors and non-survivors, at baseline and final dataset.

FIGURES WITH FIGURE LEGENDS

- Figure 1: Diagram of the cardiogenic shock patients with pulmonary artery catheter by etiology and survival status.
- Figure 2: Hemo-metabolic trajectories in AMI-cardiogenic shock and HF-cardiogenic shock.

Table 1. Demographic and Baseline Characteristics by Cardiogenic Shock Etiology

	All (N=2260)		AMI-CS (N=604)		HF-CS (N=1386)		p-values
	n (%)		n (%)		n (%)		
	N	Mean±SD	N	Mean±SD	N	Mean±SD	
Demographics							
Male	1598 (70.7)		424 (70.2)		1005 (72.5)		0.29
Age (years)	2259	61.6±13.8	603	66.0±11.7	1386	60.1±14.0	<0.001
Race							<0.001
White	1568 (69.4)		461 (76.3)		925 (66.7)		
Black	371 (16.4)		43 (7.1)		285 (20.6)		
Asian	83 (3.7)		31 (5.1)		39 (2.8)		
Other	181 (8.0)		52 (8.6)		105 (7.6)		
BMI	2248	29.4±7.4	601	29.4±6.7	1378	29.4±7.7	0.56
Clinical Characteristics							
HTN	1371 (60.7)		407 (67.4)		806 (58.2)		<0.001
DM	852 (37.7)		246 (40.7)		514 (37.1)		0.13
CKD (any stage)	656 (29.0)		112 (18.5)		497 (35.9)		<0.001
History of MI	450 (19.9)		134 (22.2)		281 (20.3)		0.33
History of HF	1344 (59.5)		176 (29.1)		1063 (76.7)		<0.001
COPD	321 (14.2)		80 (13.3)		212 (15.3)		0.23
AF	733 (32.4)		87 (14.4)		572 (41.3)		<0.001
Transfer	1119 (49.5)		362 (59.9)		644 (46.5)		<0.001
PVD	207 (9.2)		68 (11.3)		123 (8.9)		0.10
History of CABG	269 (11.9)		55 (9.1)		185 (13.3)		0.008
Echocardiography							
LVEF (%)	1733	27.2±16.8	511	28.9±15.3	1029	24.6±16.0	<0.001
LVEDD (cm)	1325	6.0±8.9	373	6.1±16.7	832	6.0±1.3	<0.001
SCAI stage							
B	300 (13.3)		67 (11.1)		205 (14.8)		
C	216 (9.6)		34 (5.6)		166 (12.0)		
D	530 (23.5)		148 (24.5)		321 (23.2)		
E	388 (17.2)		176 (29.1)		164 (11.8)		

AMI-CS indicates cardiogenic shock related to acute myocardial infarction; HF-CS, cardiogenic shock related to heart failure; BMI, body mass index; HTN, hypertension; DM, diabetes mellitus; CKD, chronic kidney disease; MI, myocardial infarction; HF, heart failure; COPD, chronic obstructive pulmonary disease; AF, atrial fibrillation; PVD, peripheral vascular disease; CABG, coronary artery bypass graft; LVEF, left ventricular ejection fraction; LVEDD, left ventricular end diastolic diameter; SCAI, society for cardiovascular angiography & interventions.

Table 2. Baseline and Final Hemo-Metabolic Variables in the AMI-CS and HF-CS

	AMI-CS (N=604)		p-values	HF-CS (N=1386)		p-values
	Baseline	Final		Baseline	Final	
	Mean±SD	Mean±SD		Mean±SD	Mean±SD	
Vital Signs						
SBP (mmHg)	109.7±22.1	106.6±23.3	0.04	107.9±19.1	106.5±23.1	0.06
DBP (mmHg)	66.3±16.7	59.4±15.2	<0.001	67.9±13.9	64.1±13.7	<0.001
HR (bpm)	89.1±21.6	88.3±19.6	0.87	92.1±21.1	92.3±18.9	0.79
Metabolic Parameters						
Lactate (mmol/L)	4.7±4.6	4.9±5.4	0.43	3.9±3.7	3.4±4.5	<0.001
ALT (IU/L)	423±970	328±782	0.21	314±797	203±523	<0.001
AST (IU/L)	436±1058	361±1198	<0.001	347±942	192±671	<0.001
Serum Cr (mg/dL)	1.7±1.3	1.6±1.0	0.03	2.0±1.5	1.7±1.2	<0.001
Bicarbonate (meq/L)	21.7±5.4	23.2±5.0	<0.001	23.5±6.1	25.2±5.5	<0.001
Hemodynamic Parameters						
Left Sided Hemodynamics						
PCWP (mmHg)	21.5±9.8	19.7±9.1	0.12	23.2±9.4	18.3±8.1	<0.001
PADP (mmHg)	23.1±8.7	19.6±7.5	<0.001	26.4±9.5	20.9±8.9	<0.001
CO (L/min)	4.3±1.7	4.9±1.5	<0.001	4.0±1.4	5.2±1.6	<0.001
CI (L/min/m ²)	2.2±0.8	2.5±0.7	<0.001	2.0±0.7	2.6±0.8	<0.001
CPO (Watts)	0.8±0.3	0.8±0.3	0.004	0.7±0.3	0.9±0.3	<0.001
SVR (dynes.sec.cm ⁻⁵)	1472±638	1150±473	<0.001	1517±636	1157±439	<0.001
API	2.7±2.3	3.0±2.4	0.30	2.3±2.2	2.9±1.9	<0.001
Right Sided Hemodynamics						
RAP (mmHg)	13.4±6.3	10.9±5.5	<0.001	14.4±7.3	10.7±6.4	<0.001
PASP (mmHg)	42.9±14.7	40.2±13.2	<0.001	50.7±16.3	43.8±15.5	<0.001
Mean PAP (mmHg)	29.7±10.1	26.5±8.6	<0.001	34.5±11.0	28.6±10.3	<0.001
PAPi	2.0±1.9	2.7±2.8	<0.001	2.5±2.9	3.4±3.6	<0.001
PVR (Woods Units)	2.6±1.1	2.6±1.4	0.99	3.5±2.4	2.9±1.8	<0.001
PA Saturation (%)	61.8±15.7	64±15.8	0.28	56.8±15.8	61.3±11.9	<0.001
PA Compliance (ml/mmHg)	2.8±2.1	3.5±3.0	<0.001	2.5±4.6	3.0±2.0	<0.001
RVSWI (g/m/beat/m ²)	6.0±3.5	6.9±3.4	0.003	6.9±15.5	7.2±4.0	<0.001
RAP/PCWP ratio	0.6±0.2	0.6±0.3	0.02	0.6±0.4	0.6±0.3	0.29
TPG (mmHg)	10.0±8.5	9.0±7.8	0.17	11.0±8.3	10.2±6.9	0.14
DPG (mmHg)	1.9±8.3	0.5±6.7	0.52	2.3±7.3	2.2±6.3	0.35

AMI-CS indicates cardiogenic shock related to acute myocardial infarction; HF-CS, cardiogenic shock related to heart failure; SBP, systolic blood pressure; DBP, diastolic blood pressure; HR, heart rate; ALT, alanine transaminase; AST, aspartate transaminase; Cr, creatinine; PCWP, pulmonary capillary wedge pressure; PADP, pulmonary artery diastolic pressure; CO, cardiac output; CI, cardiac index; CPO, cardiac power output; SVR, systemic vascular resistance; API, aortic pulsatility index; RAP, right atrial pressure; PASP, pulmonary artery systolic pressure; mean PAP, mean pulmonary artery pressure; PAPi, pulmonary artery pulsatility index; PVR, pulmonary vascular resistance; PA, pulmonary artery; RVSWI, right ventricular stroke work index; TPG, transpulmonary gradient; DPG, diastolic pulmonary gradient.

Table 3. In-hospital Outcomes and Interventions Comparing AMI-CS and HF-CS Patients.

	All (N=2260)	AMI-CS (n=604)	HF-CS (n=1386)	p-values
	N (%)			
PAC utilization; Median (IQR)				
Admission to PAC insertion (days)	0.9 (2.9)	0.4 (1.6)	1.1 (3.6)	<0.0001
Duration of PAC (days)	5.8 (9.6)	4.7 (7.3)	6.3 (12.2)	<0.0001
In-hospital Interventions				
PCI done at stay	359 (15.5)	271 (50.3)	61 (4.5)	<0.0001
CABG done at stay	178 (7.9)	90 (15.3)	38 (2.8)	<0.0001
MCS devices				
MCS device/s during hospitalization	1401 (61.9)	476 (78.8)	748 (53.9)	<0.0001
IABP alone	556 (24.6)	170 (28.1)	329 (23.7)	0.04
Impella CP alone	151 (6.6)	83 (13.7)	59 (4.3)	<0.0001
Impella 5/5.5 alone	100 (4.4)	15 (2.5)	81 (5.8)	0.001
ECMO alone	111 (4.9)	21 (3.5)	48 (3.5)	0.99
Other/Multiple	483 (21.3)	187 (30.9)	231 (16.7)	<0.0001
MCS devices before PAC insertion	745 (33)	197 (32.6)	437 (31.5)	0.31
Vasopressors/Inotropes				
Vasopressors/Inotropes during hospitalization	1903 (84.3)	526 (87.1)	1153 (83.2)	0.70
Vasopressors/inotropes at PAC insertion				0.001
0	727 (32.2)	158 (26.2)	479 (34.6)	
1	687 (30.8)	143 (23.7)	481 (34.7)	
2+	433 (19.2)	124 (20.5)	251 (18.1)	
Vasopressors/inotropes at PAC removal				<0.0001
0	869 (38.5)	232 (38.4)	537 (38.7)	
1	780 (34.5)	168 (27.8)	529 (38.2)	
2+	587 (26)	199 (33)	305 (22)	
In-Hospital Outcomes				
Cardiac Arrest	472 (20.8)	212 (35.1)	183 (13.2)	<0.0001
Heart Replacement Therapy (LVAD/HT)	438 (19.6)	37 (6.1)	371 (26.8)	<0.0001
Native Heart Recovery	1168 (51.7)	324 (53.6)	698 (50.4)	0.2
In-hospital mortality	649 (28.7)	242 (40.1)	311 (22.4)	<0.0001

AMI-CS indicates cardiogenic shock related to acute myocardial infarction; HF-CS, cardiogenic shock related to heart failure; PAC, pulmonary artery catheter; PCI, percutaneous coronary intervention; CABG, coronary artery bypass graft; MCS, mechanical circulatory support; IABP, intra-aortic balloon pump; ECMO, extracorporeal membrane oxygenation; LAVD, left ventricular assist device; HT, heart transplant.

Table 4. Baseline, Final and Delta-P Hemo-Metabolic Parameters in HF-CS Between Survival and Non-Survival.

	Baseline Dataset			Final Dataset			Delta-P		
	Survivor (n=1070)	Non-survivor (n=311)	P-value	Survivor (n=1070)	Non-survivor (n=311)	P-value	Survivor (n=1070)	Non-survivor (n=311)	P-value
Metabolic Parameters									
Lactate (mmol/L)	3.2 ± 2.8	4.7 ± 4.6	0.002	1.8 ± 1.7	5.4 ± 6.0	<0.0001	-1.4 ± 3.2	0.7 ± 5.6	0.0006
BUN (mg/dL)	38.6 ± 24	46.1 ± 25.7	0.0001	35.8 ± 22.2	45.3 ± 27.4	<0.0001	-2.8 ± 23.2	-0.7 ± 29.0	0.32
Serum Cr (mg/dL)	1.9 ± 1.6	2.2 ± 1.2	0.02	1.6 ± 1.2	2.1 ± 1.2	<0.0001	-0.3 ± 1.4	-0.1 ± 1.5	0.05
HCO ₃ (meq/L)	24.1 ± 5.6	21.9 ± 7.1	<0.0001	26.1 ± 4.6	22.9 ± 6.8	<0.0001	2.0 ± 6.2	1.0 ± 8.0	0.12
AST (IU/L)	356 ± 1023	315 ± 565	0.58	99 ± 340	523 ± 1229	0.0004	-257 ± 968	208 ± 1178	0.0002
Vital Signs									
HR (bpm)	91.4 ± 20.4	94.8 ± 23.4	0.04	92.3 ± 17.5	92.3 ± 23.5	0.98	0.9 ± 21.4	-2.5 ± 28.9	0.08
SBP (mmHg)	108.7 ± 18.5	105.3 ± 21.0	0.03	110.9 ± 20.7	90.8 ± 24.3	<0.0001	2.2 ± 23.9	-14.5 ± 28.2	<0.0001
DBP (mmHg)	69.1 ± 13.4	63.9 ± 15.0	<0.0001	66.7 ± 12.4	55.0 ± 14.4	<0.0001	-2.4 ± 15.6	-8.9 ± 18.6	<0.0001
MAP (mmHg)	82.3 ± 13.9	77.5 ± 14.2	<0.0001	80.5 ± 12.9	66.3 ± 16.1	<0.0001	-1.8 ± 16.7	-11.2 ± 20.2	<0.0001
Hemodynamic Parameters									
Right Sided Hemodynamics									
RAP (mmHg)	14.2 ± 7.3	15.4 ± 7.5	0.0485	9.7 ± 5.6	14.3 ± 7.6	<0.0001	-4.4 ± 7.9	-1.0 ± 8.3	<0.0001
PASP (mmHg)	50.1 ± 15.7	53.0 ± 18.0	0.03	43.1 ± 14.7	46.2 ± 17.7	0.02	-7.0 ± 16.3	-6.8 ± 17.5	0.86
mPAP (mmHg)	34.1 ± 10.7	36 ± 11.7	0.02	27.9 ± 10.0	31.0 ± 11.1	0.0003	-6.5 ± 12	-5.2 ± 11.6	0.16
PAPi	2.5 ± 3.0	2.3 ± 2.6	0.31	3.6 ± 3.7	2.4 ± 3.3	<0.0001	1.1 ± 4.3	0.1 ± 3.2	0.0009
PVR (Woods Units)	3.4 ± 2.1	4.1 ± 3.5	0.31	2.7 ± 1.4	3.8 ± 3.2	0.02	-0.7 ± 2	-0.4 ± 1.8	0.35
PA Saturation (%)	56.6 ± 15.2	58.1 ± 18.5	0.66	62.6 ± 11.1	54.2 ± 13.8	0.002	6.0 ± 16.0	-3.8 ± 20.7	0.01
PA Compliance (ml/mmHg)	2.3 ± 1.7	3.4 ± 10.8	0.28	3.1 ± 2.0	2.5 ± 2.0	0.004	0.8 ± 2.2	-0.9 ± 9.9	0.0008
PA Pulse Pressure (mmHg)	24.1 ± 10.8	25.6 ± 12.4	0.09	23.1 ± 10.0	22.8 ± 12.5	0.69	-1.0 ± 10.7	-2.9 ± 13.2	0.03
RVSWI (g/m/beat/m ²)	6.2 ± 3.4	10.6 ± 37.5	0.24	7.3 ± 3.9	6.7 ± 4.3	0.22	1.1 ± 4.2	-4.0 ± 37.4	0.01
RAP/PCWP ratio	0.6 ± 0.4	0.7 ± 0.4	0.12	0.6 ± 0.3	0.7 ± 0.4	0.02	0.06 ± 0.5	0.05 ± 0.4	0.42
TPG (mmHg)	10.5 ± 7.5	14.5 ± 11.8	0.04	10.0 ± 6.5	11.4 ± 9.1	0.38	-0.4 ± 6.5	-3.2 ± 10.6	0.03
DPG (mmHg)	1.8 ± 6.3	5.3 ± 11.7	0.01	2.2 ± 5.8	2.4 ± 8.8	0.91	0.4 ± 6.7	-3.0 ± 11.9	0.01
Left Sided Hemodynamics									
PADP (mmHg)	26.1 ± 9.4	27.5 ± 9.8	0.06	20.2 ± 8.7	23.5 ± 9.0	<0.0001	-5.9 ± 11.1	-4.0 ± 10.7	0.02
PCWP (mmHg)	23.5 ± 9.4	21.4 ± 8.8	0.17	17.9 ± 7.7	20.6 ± 10.3	0.04	-5.5 ± 10.4	-0.8 ± 7.7	0.0007
CO (L/min)	4.0 ± 1.4	4.4 ± 1.6	0.009	5.3 ± 1.6	4.7 ± 1.6	0.001	1.3 ± 1.8	0.4 ± 2.0	<0.0001
CI (L/min/m ²)	2.0 ± 0.7	2.1 ± 0.7	0.03	2.7 ± 0.8	2.3 ± 0.8	0.0002	0.7 ± 0.9	0.2 ± 1.0	<0.0001
CPO (Watts)	0.7 ± 0.3	0.8 ± 0.3	0.09	0.9 ± 0.3	0.7 ± 0.3	<0.0001	0.2 ± 0.4	-0.03 ± 0.4	<0.0001
CPI (Watts/m ²)	0.4 ± 0.1	0.4 ± 0.1	0.20	0.5 ± 0.2	0.4 ± 0.1	<0.0001	0.1 ± 0.2	-0.007 ± 0.2	<0.0001
SVR (dynes.sec.cm ⁻⁵)	1549 ± 621	1346 ± 691	0.01	1175 ± 431	1058 ± 466	0.03	-374 ± 629	-288 ± 715	0.24
API	2.3 ± 2.3	2.2 ± 1.5	0.78	2.9 ± 1.9	2.4 ± 1.8	0.09	0.6 ± 2.7	0.2 ± 1.8	0.18

HF-CS, cardiogenic shock related to heart failure; Delta-P, change in parameter between baseline and final; BUN, blood urea nitrogen; Cr, creatinine; HCO₃, bicarbonate; AST, aspartate transaminase; HR, heart rate; SBP, systolic blood pressure; DBP, diastolic blood pressure; MAP, mean arterial pressure; RAP, right atrial pressure; PASP, pulmonary artery systolic pressure; mPAP, mean pulmonary artery; PAPi, pulmonary artery pulsatility index; PVR, pulmonary vascular resistance; PA, pulmonary artery; RVSWI, right ventricular stroke work index; TPG, transpulmonary gradient; DPG, diastolic pulmonary gradient; PADP, pulmonary artery diastolic pressure; PCWP, pulmonary capillary wedge pressure; CO, cardiac output; CI,

medRxiv preprint doi: <https://doi.org/10.1101/2024.01.05.23300478>; this version posted January 9, 2024. The copyright holder for this preprint (which was not certified by peer review) is the author/funder, who has granted medRxiv a license to display the preprint in perpetuity. It is made available under a [CC-BY-NC-ND 4.0 International license](#).

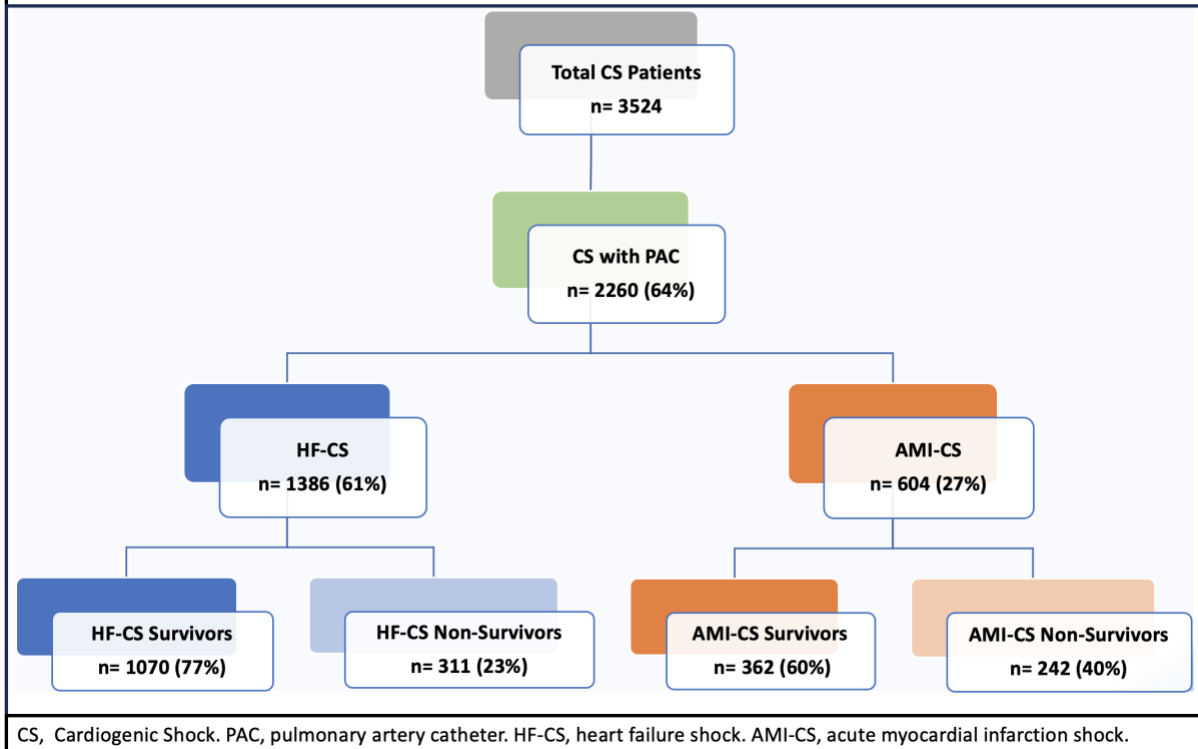
cardiac index; CPO, cardiac power output; CPI, cardiac power index; SVR, systemic vascular resistance; API, aortic pulsatility index.

Table 5. Baseline, Final and Delta-P Hemo-Metabolic Parameters in AMI-CS Between Survival and Non-Survival.

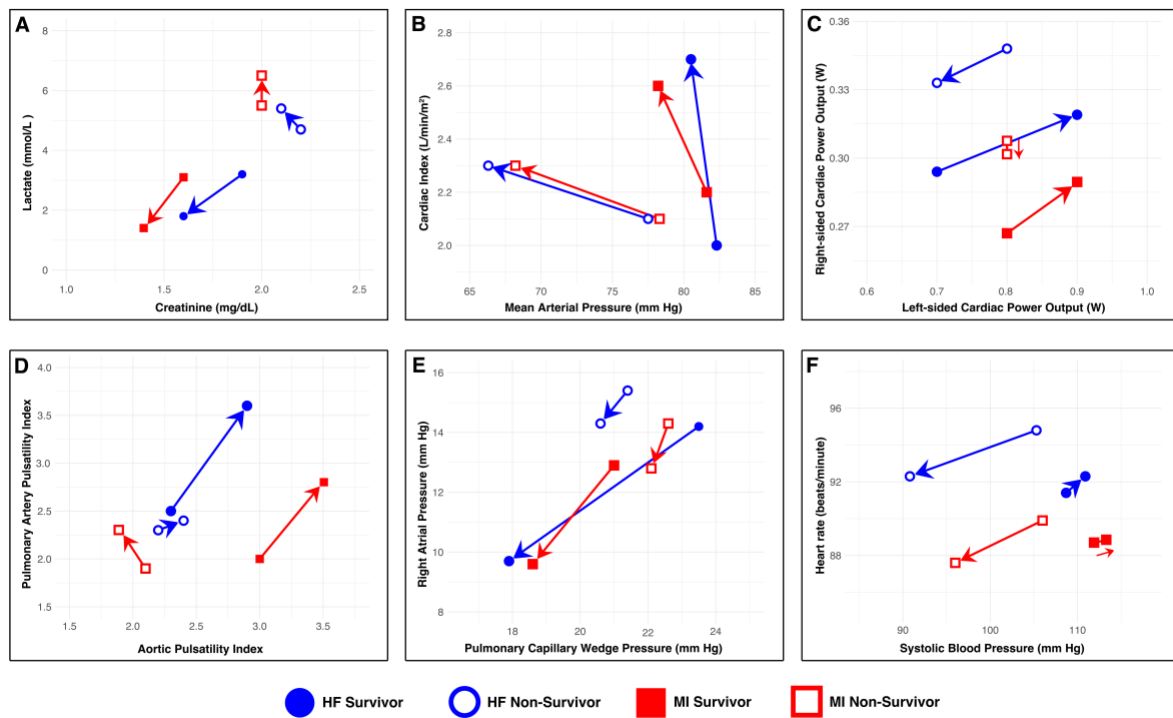
	Baseline Dataset			Final Dataset			Delta-P		
	Survivor (n=362)	Non-survivor (n=242)	P-value	Survivor (n=362)	Non-survivor (n=242)	P-value	Survivor (n=362)	Non-survivor (n=242)	P-value
Metabolic Parameters									
Lactate (mmol/L)	3.1 ± 2.6	5.5 ± 5.1	0.016	1.4 ± 0.3	6.5 ± 5.8	<0.0001	-1.7 ± 2.6	1.1 ± 5.9	0.0009
BUN (mg/dL)	28.0 ± 18.9	36.4 ± 20.8	0.0001	30.6 ± 19.1	43.2 ± 25.6	<0.0001	2.6 ± 19.0	6.7 ± 28.3	0.13
Serum Cr (mg/dL)	1.6 ± 1.1	2.0 ± 1.5	0.002	1.4 ± 0.9	2.0 ± 1.1	<0.0001	-0.2 ± 0.9	-0.01 ± 1.6	0.23
HCO ₃ (meq/L)	22.1 ± 5.3	21.1 ± 5.6	0.12	24.6 ± 3.9	21.4 ± 5.7	<0.0001	2.4 ± 6.2	0.3 ± 7.0	0.007
AST (IU/L)	380 ± 827	517 ± 1331	0.47	107 ± 211	734 ± 1812	0.008	-273 ± 848	217 ± 2181	0.09
Vital Signs									
HR (bpm)	88.7 ± 21.5	89.8 ± 21.7	0.62	88.8 ± 16.9	87.6 ± 23.4	0.60	0.1 ± 23.8	-2.2 ± 28.5	0.41
SBP (mmHg)	111.9 ± 22.1	106 ± 21.7	0.01	113 ± 18.9	96.0 ± 26.0	<0.0001	1.2 ± 27.3	-10.0 ± 31.5	0.0003
DBP (mmHg)	67.0 ± 16.8	65.2 ± 16.6	0.32	61.9 ± 14.0	55.4 ± 16.2	0.0001	-5.1 ± 17.7	-9.8 ± 22.2	0.03
MAP (mmHg)	81.6 ± 15.9	78.3 ± 15.1	0.05	78.2 ± 12.6	68.2 ± 16.1	<0.0001	-3.4 ± 18.6	-10.1 ± 20.9	0.002
Hemodynamic Parameters									
Right Sided Hemodynamics									
RAP (mmHg)	12.9 ± 6.4	14.3 ± 5.9	0.06	9.6 ± 4.7	12.8 ± 6.2	<0.0001	-3.3 ± 7.4	-1.4 ± 7.3	0.04
PASP (mmHg)	41.3 ± 14.0	45.4 ± 15.4	0.01	39.4 ± 12.6	41.6 ± 13.9	0.13	-1.9 ± 13.9	-3.8 ± 15.8	0.22
mPAP (mmHg)	28.4 ± 9.8	31.7 ± 10.3	0.0006	25.4 ± 8	28.3 ± 9.1	0.004	-2.6 ± 9.9	-3.8 ± 11.2	0.28
PAPi	2.0 ± 1.8	1.9 ± 2.1	0.80	3.0 ± 2.6	2.3 ± 3.0	0.049	1.0 ± 3.0	0.4 ± 3.6	0.13
PVR (Woods Units)	2.8 ± 1.2	2.3 ± 0.9	0.32	2.8 ± 1.5	2.3 ± 0.9	0.31	0.01 ± 1.3	-0.04 ± 0.6	0.87
PA Saturation (%)	60.1 ± 14.2	64.8 ± 18.0	0.32	64.8 ± 14.0	62.7 ± 19	0.67	4.7 ± 13.5	-2.1 ± 17.7	0.11
PA Compliance (ml/mmHg)	2.9 ± 2.0	2.5 ± 2.1	0.19	3.7 ± 3.3	3.2 ± 2.3	0.22	0.8 ± 3.5	0.7 ± 2.8	0.86
PA Pulse Pressure (mmHg)	19.6 ± 8.7	20.7 ± 10.4	0.32	21.0 ± 9.1	19.9 ± 10.6	0.27	1.4 ± 10	-0.8 ± 11	0.047
RVSWI (g/m/beat/m ²)	6.0 ± 3.7	5.8 ± 2.9	0.67	7.0 ± 3.5	6.6 ± 3.0	0.38	1.0 ± 4.3	0.8 ± 3.4	0.73
RAP/PCWP ratio	0.6 ± 0.2	0.7 ± 0.3	0.65	0.6 ± 0.3	0.6 ± 0.2	0.92	-0.05 ± 0.3	-0.1 ± 0.2	0.68
TPG (mmHg)	9.3 ± 6.0	11.6 ± 12.1	0.45	9.9 ± 8.5	7.1 ± 6.0	0.15	0.6 ± 7.2	-4.5 ± 11.6	0.09
DPG (mmHg)	1.1 ± 5.7	3.5 ± 12.2	0.43	0.4 ± 7.4	0.7 ± 5.2	0.85	-0.8 ± 6.5	-2.8 ± 11.5	0.48
Left Sided Hemodynamics									
PADP (mmHg)	22.1 ± 8.6	24.8 ± 8.6	0.003	18.4 ± 6.9	21.7 ± 8.1	<0.0001	-3.7 ± 9.3	-3.1 ± 10.8	0.61
PCWP (mmHg)	21.0 ± 9.9	22.6 ± 10.0	0.57	18.6 ± 8.3	22.1 ± 10.4	0.20	-2.4 ± 9.2	-0.5 ± 7.5	0.41
CO (L/min)	4.2 ± 1.6	4.4 ± 2.0	0.63	5.1 ± 1.4	4.6 ± 1.6	0.03	0.9 ± 1.9	0.2 ± 2.2	0.03
CI (L/min/m ²)	2.2 ± 0.8	2.1 ± 0.9	0.84	2.6 ± 0.7	2.3 ± 0.7	0.00	0.5 ± 1.0	0.1 ± 1.1	0.04
CPO (Watts)	0.8 ± 0.3	0.8 ± 0.4	0.52	0.9 ± 0.3	0.8 ± 0.3	0.02	0.1 ± 0.3	0.02 ± 0.4	0.25
CPI (Watts/m ²)	0.4 ± 0.2	0.4 ± 0.2	0.12	0.5 ± 0.1	0.4 ± 0.1	0.001	0.05 ± 0.2	0.02 ± 0.2	0.27
SVR (dynes.sec.cm ⁻⁵)	1496 ± 610	1420 ± 693	0.49	1149 ± 462	1152 ± 498	0.97	-347 ± 618	-268 ± 758	0.47
API	3.0 ± 2.5	2.1 ± 1.8	0.15	3.5 ± 2.6	1.9 ± 1.7	0.01	0.5 ± 2.5	-0.2 ± 1.3	0.21

AMI-CS indicates cardiogenic shock related to acute myocardial infarction. The rest of the abbreviations are same as for table

Figure 1 Diagram of The Cardiogenic Shock Patients with PAC by Etiology and Survival Status



Hemo-Metabolic Trajectories in Acute Myocardial Infarction and Heart Failure-Cardiogenic Shock



*Arrows are a visual representation of the hemo-metabolic trajectories. Refer to Supplementary Table 3 for p-values of the comparisons.

Figure 2. The trajectories of important metabolic and hemodynamic parameters in cardiogenic shock related to acute myocardial infarction (AMI-CS) and cardiogenic shock related to heart failure (HF-CS). Blue full circles represent CS-HF survivors, blue empty circles for HF-CS non-survivors, red full squares for AMI-CS survivors, red empty squares for AMI-CS non-survivors.

SUPPLEMENTAL MATERIALS (Intended for publication)

Supplement Tables:

- Supplement Table 1: Hemodynamic measurement and calculations.
- Supplement Table 2: Baseline and final hemodynamics comparing AMI-CS and HF-CS
- Supplement Table 3: Comparison of baseline and final datasets between survivors and non-survivors in HF-CS.
- Supplement Table 4: Comparison of baseline and final datasets between survivors and non-survivors in AMI-CS.
- Supplement Table 5: Univariable logistic regression for each hemodynamic and metabolic variable for mortality association.

Supplement Table 1. Formulas and Ranges of different Hemodynamic Parameters

	Formulas	Normal Ranges
Right Sided Parameters		
RAP (mmHg)	-	0-8
PASP (mmHg)	-	15-30
mPAP (mmHg)	$2/3 \text{ PADP} + 1/3 \text{ PASP}$	8-20
PAPi	$(\text{PASP}-\text{PADP})/\text{RAP}$	> 2.5 (<1 indicative of RVF)
PVR (Woods Units)	$(\text{mPAP}-\text{PCWP})/\text{CO}$	< 3
PA Saturation (%)	-	70-80
PA Compliance (ml/mmHg)	$\text{SV}/(\text{PASP}-\text{PADP})$	3.8-12 (<2.5 indicative of RVF)
PA Pulse Pressure (mmHg)	$\text{PASP}-\text{PADP}$	7-19
RVSWI (g/m/beat/m ²)	$0.0136 * \text{SVI} * (\text{mPAP}-\text{RAP})$	5-10 (<5 indicative of worse outcome in HF)
RAP/PCWP ratio	RAP/PCWP	<0.86
RAP/PADP ratio	RAP/PADP	<0.86
TPG (mmHg)	$\text{mPAP}-\text{PCWP}$	<12
DPG (mmHg)	$\text{PADP}-\text{PCWP}$	0-5
Left Sided Parameters		
PADP (mmHg)	-	4-12
PCWP (mmHg)	-	4-12
CO (L/min)	-	4-8
CI (L/min/m ²)	CO/BSA	2.5-4.2
CPO (Watts)	$\text{MAP} * \text{CO}/451$	>1 (<0.6 indicative of high mortality)
CPI W/m ²	$\text{MAP} * \text{CI}/451$	0.5-0.7
SVR (dynes.sec.cm ⁻⁵)	$80 * (\text{MAP}-\text{RAP})/\text{CO}$	800-1200
API	$(\text{SBP}-\text{DBP})/\text{PCWP}$	3-5 (<1.9 predictor of mortality in HF)

Abbreviations like abbreviations for table 4.

Supplement Table 2. Baseline and Final Hemo-Metabolic Parameters Comparing AMI-CS and HF-CS.

	Baseline Dataset			Final Dataset		
	AMI-CS (N=604)	HF-CS (n=1386)	p-values	AMI-CS (N=604)	HF-CS (n=1386)	p-values
	Mean±SD	Mean±SD		Mean±SD	Mean±SD	
Vital Signs						
SBP (mmHg)	109.7±22.1	107.9±19.1	0.15	106.6±23.3	106.5±23.1	0.94
DBP (mmHg)	66.3±16.7	67.9±13.9	0.07	59.4±15.2	64.1±13.7	<0.001
Heart rate (bpm)	89.1±21.6	92.1±21.1	0.02	88.3±19.6	92.3±18.9	<0.001
Metabolic Parameters						
Lactate (mmol/L)	4.7±4.6	3.9±3.7	0.03	4.9±5.4	3.4±4.5	0.07
ALT (IU/L)	422.5±970.3	314.1±796.8	0.004	327.9±782.1	202.9±522.6	<0.001
AST (IU/L)	435.8±1057.9	346.6±941.5	<0.001	360.6±1198.0	192.1±671.8	<0.001
SCr (mg/dL)	1.7±1.3	2.0±1.5	<0.001	1.6±1.0	1.7±1.2	0.27
Bicarbonate (mg/dL)	21.7±5.4	23.5±6.1	<0.001	23.2±5.0	25.2±5.5	<0.001
Hemodynamic Parameters						
Left Sided Hemodynamics						
PCWP (mmHg)	21.5±9.8	23.2±9.4	0.20	19.7±9.1	18.3±8.1	0.22
PADP (mmHg)	23.1±8.7	26.4±9.5	<0.001	19.6±7.5	20.9±8.9	0.03
CO (L/min)	4.3±1.7	4.0±1.4	0.13	4.9±1.5	5.2±1.6	0.02
Cardiac index (L/min/m ²)	2.2±0.8	2.0±0.7	0.01	2.5±0.7	2.6±0.8	0.35
CPO (Watts)	0.8±0.3	0.7±0.3	0.14	0.8±0.3	0.9±0.3	0.04
SVR (dynes.sec.cm ⁻⁵)	1471.6±637.6	1516.7±636.0	0.26	1150.3±473	1156.5±438.7	0.49
API	2.7±2.3	2.3±2.2	0.30	3.0±2.4	2.9±1.9	0.52
Right Sided Hemodynamics						
RAP (mmHg)	13.4±6.3	14.4±7.3	0.04	10.9±5.5	10.7±6.4	0.23
PASP (mmHg)	42.9±14.7	50.7±16.3	<0.001	40.2±13.2	43.8±15.5	<0.001
Mean PAP (mmHg)	29.7±10.1	34.5±11.0	<0.001	26.5±8.6	28.6±10.3	0.004
PAPi	2.0±1.9	2.5±2.9	0.003	2.7±2.8	3.4±3.6	0.002
PVR (Woods Units)	2.6±1.1	3.5±2.4	0.06	2.6±1.4	2.9±1.8	0.41
PA Saturation (%)	61.8±15.7	56.8±15.8	0.03	64±15.8	61.3±11.9	0.16
PA Compliance (ml/mmHg)	2.8±2.1	2.5±4.6	<0.001	3.5±3.0	3.0±2.0	0.047
RVSWI (g/m/beat/m ²)	6.0±3.5	6.9±15.5	0.25	6.9±3.4	7.2±4.0	0.78
RAP/PCWP ratio	0.6±0.2	0.6±0.4	0.10	0.6±0.3	0.6±0.3	0.96
TPG (mmHg)	10.0±8.5	11.0±8.3	0.58	9.0±7.8	10.2±6.9	0.10
DPG (mmHg)	1.9±8.3	2.3±7.3	0.64	0.5±6.7	2.2±6.3	0.05

AMI-CS indicates cardiogenic shock related to acute myocardial infarction; HF-CS, cardiogenic shock related to heart failure. The rest of the abbreviations are similar to abbreviations for table 4.

Supplement Table 3. Comparison of Baseline and Final Datasets Between Survivors and Non-survivors in HF-CS.

Mean	Survivor (N=1070)			Non-survivor (N=311)		
	Baseline	Final	p-value	Baseline	Final	p-value
Metabolic Parameters						
Lactate (mmol/L)	3.2 ± 2.8	1.8 ± 1.7	<0.001	4.7 ± 4.6	5.4 ± 6.0	0.52
BUN (mg/dL)	38.6 ± 24	35.8 ± 22.2	<0.001	46.1 ± 25.7	45.3 ± 27.4	0.70
Serum Creatinine (mg/dL)	1.9 ± 1.6	1.6 ± 1.2	<0.001	2.2 ± 1.2	2.1 ± 1.2	0.28
HCO ₃ (mg/dL)	24.1 ± 5.6	26.1 ± 4.6	<0.001	21.9 ± 7.1	22.9 ± 6.8	0.07
AST (IU/L)	356 ± 1023	99 ± 340	<0.001	315 ± 565	523 ± 1229	0.33
Vital Signs						
HR (bpm)	91.4 ± 20.4	92.3 ± 17.5	0.19	94.8 ± 23.4	92.3 ± 23.5	0.18
SBP (mmHg)	108.7 ± 18.5	110.9 ± 20.7	0.01	105.3 ± 21.0	90.8 ± 24.3	<0.001
DBP (mmHg)	69.1 ± 13.4	66.7 ± 12.4	<0.001	63.9 ± 15.0	55.0 ± 14.4	<0.001
MAP (mmHg)	82.3 ± 13.9	80.5 ± 12.9	0.003	77.5 ± 14.2	66.3 ± 16.1	<0.001
Hemodynamic Parameters						
Right Sided Hemodynamics						
RAP (mmHg)	14.2 ± 7.3	9.7 ± 5.6	<0.001	15.4 ± 7.5	14.3 ± 7.6	0.09
PASP (mmHg)	50.1 ± 15.7	43.1 ± 14.7	<0.001	53.0 ± 18.0	46.2 ± 17.7	<0.001
mPAP (mmHg)	34.1 ± 10.7	27.9 ± 10.0	<0.001	36 ± 11.7	31.0 ± 11.1	<0.001
PAPi	2.5 ± 3.0	3.6 ± 3.7	<0.001	2.3 ± 2.6	2.4 ± 3.3	0.95
PVR (Woods Units)	3.4 ± 2.1	2.7 ± 1.4	<0.001	4.1 ± 3.5	3.8 ± 3.2	0.26
PA Saturation (%)	56.6 ± 15.2	62.6 ± 11.1	<0.001	58.1 ± 18.5	54.2 ± 13.8	0.56
PA Compliance (ml/mmHg)	2.3 ± 1.7	3.1 ± 2.0	<0.001	3.4 ± 10.8	2.5 ± 2.0	0.14
PA Pulse Pressure (mmHg)	24.1 ± 10.8	23.1 ± 10.0	0.007	25.6 ± 12.4	22.8 ± 12.5	0.001
RVSWI	6.2 ± 3.4	7.3 ± 3.9	<0.001	10.6 ± 37.5	6.7 ± 4.3	0.34
RAP/PCWP ratio	0.6 ± 0.4	0.6 ± 0.3	0.24	0.7 ± 0.4	0.7 ± 0.4	0.84
RAP/PADP ratio	0.6 ± 0.4	0.5 ± 0.3	<0.001	0.6 ± 0.4	0.6 ± 0.3	0.66
TPG (mmHg)	10.5 ± 7.5	10.0 ± 6.5	0.35	14.5 ± 11.8	11.4 ± 9.1	0.07
DPG (mmHg)	1.8 ± 6.3	2.2 ± 5.8	0.37	5.3 ± 11.7	2.4 ± 8.8	0.45
Left Sided Hemodynamics						
PADP (mmHg)	26.1 ± 9.4	20.2 ± 8.7	<0.001	27.5 ± 9.8	23.5 ± 9.0	<0.001
PCWP (mmHg)	23.5 ± 9.4	17.9 ± 7.7	<0.001	21.4 ± 8.8	20.6 ± 10.3	0.28
CO (L/min)	4.0 ± 1.4	5.3 ± 1.6	<0.001	4.4 ± 1.6	4.7 ± 1.6	0.06
CI (L/min/m ²)	2.0 ± 0.7	2.7 ± 0.8	<0.001	2.1 ± 0.7	2.3 ± 0.8	0.02
CPO (Watts)	0.7 ± 0.3	0.9 ± 0.3	<0.001	0.8 ± 0.3	0.7 ± 0.3	0.42
CPI (Watts/m ²)	0.4 ± 0.1	0.5 ± 0.2	<0.001	0.4 ± 0.1	0.4 ± 0.1	0.69
SVR (dynes.sec.cm ⁻⁵)	1549 ± 621	1175 ± 431	<0.001	1346 ± 691	1058 ± 466	<0.001
API	2.3 ± 2.3	2.9 ± 1.9	<0.001	2.2 ± 1.5	2.4 ± 1.8	0.55

HF-CS indicates cardiogenic shock related to heart failure. The rest of the abbreviations are like abbreviations for table 4.

Supplement Table 4. Comparison of Baseline and Final Datasets Between Survivors and Non-survivors in AMI-CS.

	Survivor (N=362)			Non-survivor (N=242)		
	Baseline	Final	p-value	Baseline	Final	p-value
Metabolic Parameters						
Lactate (mmol/L)	3.1 ± 2.6	1.4 ± 0.3	<0.001	5.5 ± 5.1	6.5 ± 5.8	0.22
BUN (mg/dL)	28.0 ± 18.9	30.6 ± 19.1	0.04	36.4 ± 20.8	43.2 ± 25.6	0.01
Serum Creatinine (mg/dL)	1.6 ± 1.1	1.4 ± 0.9	<0.001	2.0 ± 1.5	2.0 ± 1.1	0.33
HCO ₃ (mg/dL)	22.1 ± 5.3	24.6 ± 3.9	<0.001	21.1 ± 5.6	21.4 ± 5.7	0.66
AST (IU/L)	380 ± 827	107 ± 211	<0.001	517.4 ± 1331	734.5 ± 1812	0.30
Vital Signs						
HR (bpm)	88.7 ± 21.5	88.8 ± 16.9	0.40	89.8 ± 21.7	87.6 ± 23.4	0.34
SBP (mmHg)	111.9 ± 22.1	113 ± 18.9	0.52	106 ± 21.7	96.0 ± 26.0	<0.001
DBP (mmHg)	67.0 ± 16.8	61.9 ± 14.0	<0.001	65.2 ± 16.6	55.4 ± 16.2	<0.001
MAP (mmHg)	81.6 ± 15.9	78.2 ± 12.6	0.01	78.3 ± 15.1	68.2 ± 16.1	<0.001
Hemodynamic Parameters						
Right Sided Hemodynamics						
RAP (mmHg)	12.9 ± 6.4	9.6 ± 4.7	<0.001	14.3 ± 5.9	12.8 ± 6.2	0.04
PASP (mmHg)	41.3 ± 14.0	39.4 ± 12.6	0.04	45.4 ± 15.4	41.6 ± 13.9	0.004
mPAP (mmHg)	28.4 ± 9.8	25.4 ± 8	<0.001	31.7 ± 10.3	28.3 ± 9.1	<0.001
PAPi	2.0 ± 1.8	3.0 ± 2.6	<0.001	1.9 ± 2.1	2.3 ± 3.0	0.16
PVR (Woods Units)	2.8 ± 1.2	2.8 ± 1.5	0.94	2.3 ± 0.9	2.3 ± 0.9	0.88
PA Saturation (%)	60.1 ± 14.2	64.8 ± 14.0	0.04	64.8 ± 18.0	62.7 ± 19	0.83
PA Compliance (ml/mmHg)	2.9 ± 2.0	3.7 ± 3.3	0.003	2.5 ± 2.1	3.2 ± 2.3	0.04
PA Pulse Pressure (mmHg)	19.6 ± 8.7	21.0 ± 9.1	0.03	20.7 ± 10.4	19.9 ± 10.6	0.39
RVSWI	6.0 ± 3.7	7.0 ± 3.5	0.01	5.8 ± 2.9	6.6 ± 3.0	0.10
RAP/PCWP ratio	0.6 ± 0.2	0.6 ± 0.3	0.12	0.7 ± 0.3	0.6 ± 0.2	0.15
RAP/PADP ratio	0.6 ± 0.3	0.5 ± 0.3	0.08	0.5 ± 0.2	0.6 ± 0.3	0.63
TPG (mmHg)	9.3 ± 6.0	9.9 ± 8.5	1.33	11.6 ± 12.1	7.1 ± 6.0	0.11
DPG (mmHg)	1.1 ± 5.7	0.4 ± 7.4	0.77	3.5 ± 12.2	0.7 ± 5.2	0.53
Left Sided Hemodynamics						
PADP (mmHg)	22.1 ± 8.6	18.4 ± 6.9	<0.001	24.8 ± 8.6	21.7 ± 8.1	<0.001
PCWP (mmHg)	21.0 ± 9.9	18.6 ± 8.3	0.10	22.6 ± 10.0	22.1 ± 10.4	0.79
CO (L/min)	4.2 ± 1.6	5.1 ± 1.4	<0.001	4.4 ± 2.0	4.6 ± 1.6	0.04
CI (L/min/m ²)	2.2 ± 0.8	2.6 ± 0.7	<0.001	2.1 ± 0.9	2.3 ± 0.7	0.02
CPO (Watts)	0.8 ± 0.3	0.9 ± 0.3	0.004	0.8 ± 0.4	0.8 ± 0.3	0.36
CPI (Watts/m ²)	0.4 ± 0.2	0.5 ± 0.1	0.003	0.4 ± 0.2	0.4 ± 0.1	0.30
SVR (dynes.sec.cm ⁻⁵)	1496 ± 611	1149 ± 463	<0.001	1420 ± 693	1152 ± 498	0.01
API	3.0 ± 2.5	3.5 ± 2.6	0.24	2.1 ± 1.8	1.9 ± 1.7	0.58

AMI-CS indicates cardiogenic shock related to heart failure. The rest of the abbreviations are like abbreviations for table 4.

Supplement Table 5. Univariable Logistic Regression of Hemo-Metabolic and Variables for Mortality Association in the Total Cohort.

Variable	Baseline Dataset		Final Dataset		Delta	
	Odds ratio (Lower-Upper CL)	p-value	Odds ratio (Lower-Upper CL)	p-value	Odds ratio (Lower-Upper CL)	p-value
SBP	0.99 (0.98-1)	0.02	0.96 (0.95-0.96)	<0.0001	0.97 (0.97-0.98)	<0.0001
DBP	0.97 (0.96-0.98)	<0.0001	0.93 (0.92-0.94)	<0.0001	0.98 (0.97-0.99)	<0.0001
HR	1.01 (1-1.01)	0.03	1 (0.99-1.01)	0.98	0.99 (0.99-1)	0.04
PCWP	0.98 (0.94-1.01)	0.19	1.04 (1-1.08)	0.04	1.05 (1.01-1.08)	0.01
PADP	1.01 (1-1.03)	0.05	1.04 (1.02-1.06)	<0.0001	1.02 (1-1.03)	0.02
CO	1.21 (1.07-1.38)	<0.01	0.80 (0.70-0.91)	<0.01	0.74 (0.66-0.83)	<0.0001
CI	1.37 (1.04-1.8)	0.02	0.58 (0.44-0.77)	<0.01	0.56 (0.44-0.70)	<0.0001
CPO	2.01 (0.98-4.11)	0.06	0.12 (0.06-0.27)	<0.0001	0.13 (0.07-0.25)	<0.0001
RAP	1.02 (1-1.04)	0.04	1.11 (1.09-1.14)	<0.0001	1.06 (1.03-1.08)	<0.0001
PASP	1.01 (1-1.02)	0.02	1.01 (1-1.02)	0.01	1 (0.99-1.01)	0.86
MPAP	1.02 (1-1.03)	0.02	1.03 (1.01-1.04)	<0.0001	1.01 (1-1.02)	0.16
PAPI	0.97 (0.91-1.04)	0.36	0.85 (0.78-0.92)	<0.01	0.94 (0.9-0.98)	0.01
PA SAT	1.01 (0.98-1.03)	0.62	0.94 (0.91-0.97)	<0.01	0.97 (0.95-0.99)	<0.01
RVSWI	1.06 (1-1.12)	0.06	0.96 (0.91-1.02)	0.19	0.93 (0.88-0.98)	0.01
TPG	1.05 (1.01-1.09)	0.01	1.03 (0.98-1.07)	0.26	0.96 (0.92-1)	0.03

Abbreviations like abbreviations for table 4.