

1  
2  
3  
4  
5  
6  
7  
8  
9  
10  
11  
12  
13  
14  
15  
16  
17  
18  
19  
20  
21  
22  
23  
24  
25  
26  
27  
28  
29

## Lower probability of viral suppression in people living with HIV who are parents in Lima, Peru

Valeria Navarro-Galarza<sup>1,2\*†</sup>, Elsa González-Lagos<sup>1,2†</sup>, Jorge Robledo<sup>2,#a†</sup>, Ana Graña<sup>2,3,4&</sup>,  
Eduardo Gotuzzo<sup>1,2&</sup>

<sup>1</sup> Universidad Peruana Cayetano Heredia, Facultad de Medicina Alberto Hurtado, Lima, Peru

<sup>2</sup> Instituto de Medicina Tropical Alexander von Humboldt, Universidad Peruana Cayetano Heredia, Lima, Peru

<sup>3</sup> Division of Infectious Diseases, Hospital Cayetano Heredia, Lima, Peru

<sup>4</sup> Universidad Peruana Cayetano Heredia, Facultad de Enfermería, Lima, Peru

<sup>#a</sup> Current address: Department of Medicine, Division of Allergy and Infectious Diseases, University of Washington, Washington, USA

\*Corresponding author

E-mail: [valeria.navarro.g@upch.pe](mailto:valeria.navarro.g@upch.pe) (VNG)

†These authors contributed equally to this work.

&These authors also contributed equally to this work.

## 30 **Abstract**

31 **Introduction:** Parenting can be a detriment for selfcare among people living with HIV (PLWH)  
32 out of concern for their children's futures and responsibilities that may limit attendance to health  
33 services. We explored the association between having children <20 years-old and viral  
34 suppression in PLWH.

35 **Methods:** Retrospective cohort study from secondary data of PLWH enrolled at the largest HIV  
36 program in Lima between 2012-2018. We established parenthood by participant self-report  
37 children <20 years-old at enrollment, with additional data gathered for PLWH who reported a  
38 child born during the first year after enrollment. The main outcome was viral suppression (<400  
39 copies/mL) by the end of follow-up. We conducted Cox regression analyses for repeated  
40 events, censoring at time of death or lost to follow-up. We built the final model by backward  
41 stepwise regression including potentially important variables and those with p-value  $\leq 0.20$  in  
42 bivariate analyses, presenting hazard ratios (HR), adjusted HR (aHR), and 95% confidence  
43 intervals (CIs).

44 **Results:** In 3170 PLWH, median age at enrollment was 31.6 years (range 17.9-76.1), 79.8%  
45 were men and 27.2% reported having children <20 years-old (median=2). At end of follow-up  
46 (8766.6 person-years), 534 (62.0%) were virally suppressed. In our final multivariate model,  
47 having children <20 years-old (aHR 3.53; [95% CI] 1.88 - 6.62) and the birth of a child during  
48 the first year after enrollment in the program (HR 1.81; [95% CI] 1.30 – 2.50) were  
49 independently associated with lack of viral suppression by end of follow-up. Based on health  
50 status of the PLWH, we estimated 70% and 69% of children to be at risk of maternal and  
51 paternal orphanhood, respectively.

52 **Conclusion:** In our setting, being a parent was associated with lower probability of viral  
53 suppression, creating a risk of orphanhood for children of PLWH. Family support services may  
54 facilitate HIV care and help PLWH maximize viral suppression.

## 55 Introduction

56 Parenting is a transforming life experience that demands time-consuming responsibilities to  
57 assist children [1]. Parents affected by chronic diseases may struggle to balance their own  
58 health care needs with parenting responsibilities. Despite HIV predominantly affecting people of  
59 reproductive age, there have been few studies regarding parenthood effects on parents' HIV  
60 health outcomes [2]. Studies have pointed to responsibilities of daily living, including parenting,  
61 as potential barriers for retention in care of people living with HIV (PLWH) [3-5]. Others suggest  
62 negative associations between parenting of PLWH and positive children's outcomes. [6-8].

63  
64 Parenting-associated effects may depend on a complex interplay of individual and societal  
65 factors. Child and family factors include age, health status, and number of children. Factors for  
66 the parent living with HIV include sex, the availability and quality of partner and social support,  
67 economical means, gender disparities, and the provision of health services.

68  
69 Women typically bear more responsibilities for children in their social, biological, and  
70 occupational roles, resulting in a greater family and childcare responsibilities. In Peru, 40.3% of  
71 women between 15 to 24 years reported interruption of studies due to familial or economic  
72 reasons, including pregnancy, and care of young children [9]. Lower adherence to antiretroviral  
73 therapy (ART) in women compared to men has been described [10]. A Lima study showed 47%  
74 of women ART dropouts [11]. In a multinational study in Latin America, women were  
75 overrepresented among PLWH who were deceased or lost to follow-up [12]. A 2014 study  
76 reported 40% of lost to follow-up (LTFU) of women living with HIV in their first year after  
77 newborn delivery [13].

78

79 In Peru, health service providers may not appreciate that PLWH may have substantial childcare  
80 duties that inhibit their own HIV-related care. In the absence of optimal ART to maintain viral  
81 suppression, premature parental death may result in orphanhood for children of PLWH.

82 Orphanhood can inhibit child development [14], further aggravating the societal impact of HIV.

83

84 We studied the association between parenthood, defined by self-report of having children <20  
85 years of age, with viral suppression by the end of follow-up in PLWH in a Lima, Peru, HIV clinic.

86 We also studied orphanhood and the risk of orphanhood for children of PLWH.

87

## 88 **Methods**

89

### 90 **Study setting**

91 In Peru, 24% of PLWH were men who have sex with men (MSM) and has not yet met UNAIDS  
92 continuity of care goals (86-82-61) by 2022 [15]. In women, an HIV infection is commonly  
93 identified in their reproductive age during pregnancy due to university HIV testing in antenatal  
94 care or in family planning consultation [16]. In men and transwomen, campaigns, outreach, and  
95 screening programs targeted MSM are efforts tailored to national guidelines [17].

96

97 Our study analyzed data from the largest HIV Program in Lima. Based at a public hospital in the  
98 north of Lima, it enrolls people aged 18 years and older with a 3<sup>rd</sup> or 4<sup>th</sup> generation ELISA HIV  
99 reactive test result followed by a confirmatory test and viral load.

100

101 During the enrollment visit, the nursing staff provides individualized counseling and completes a  
102 standardized individual form with general and clinical information. A multidisciplinary team

103 comprehensively evaluates circumstances of PLWH enrolled in the program before the start of  
104 ART, which is free at public hospitals. Eligibility guidelines during the 2012-2017 study period  
105 including all persons who were pregnant, had tuberculosis, or had CD4+ cell counts <350  
106 cells/mL.

107

108 Clinic nurses perform clinical evaluations every 6-9 months for viral load and CD4+ cell counts  
109 tests. Medications are obtained either by the PLWH or a designated person at additional visits  
110 scheduled by the nursing staff. Patient data is provided to the infectious disease specialists  
111 during outpatient visits. Demographics data is entered into the HIV Program database with a  
112 unique code, updated after each visit. Separately, outpatient visit data is recorded in the  
113 outpatient database with the same code.

114

115 During the enrollment visit, we invited adult PLWH to participate in an HIV Cohort Study at the  
116 study center. For those who consented, the entry record of the Cohort Study verified the  
117 sociodemographic and clinical information and collected data on partners and children (number  
118 and ages). Cohort data were enhanced with study-specific information described below.

119

## 120 **Study design**

121 We based our retrospective cohort study on the integration of secondary data of PLWH enrolled  
122 at the HIV program of our study center in Lima. The main predictive factor of interest was  
123 whether a PLWH reporting having one or more children <20 years of age at the time of  
124 enrollment in the HIV Program. The main outcome was viral suppression at the end of follow up.

125

## 126 **Study population**

127 PLWH were eligible for study inclusion if they were enrolled into the HIV Program between  
128 January 1, 2012, and December 31, 2017, and were themselves at least 18 years old with a  
129 confirmed HIV positive serostatus. The study follow-up was closed on December 30, 2018.

130

## 131 **Data sources**

132 We merged four datasets: the HIV Program individual forms, Cohort Study, nursery records and  
133 the outpatient service records. From the HIV Program forms, we identified the eligible study  
134 population and extracted general and clinical information, including age, sex, date of HIV  
135 diagnosis, World Health Organization (WHO) AIDS stage, CD4+ cell count, viral load, ART  
136 regimen, pregnancy, ART pick-up dates, and vital status by the end of follow-up. From the  
137 outpatient service database, we obtained the dates of outpatient visits, which served to  
138 document retention in care. From the Cohort Study, we obtained data about participants'  
139 partners, partners' HIV status, parental status, and the number and ages of living children. From  
140 nursing queries and HIV clinic records, we obtained the information of the newborn children.  
141 Data was retrospectively collected during the second and third quarters of year 2019.

142

## 143 **Study definitions**

144 Under WHO classification, we considered infants/children to be 0 to 9 years old and older  
145 children/adolescents from 10 to 19 years old. [18]. The main outcome, viral suppression, was  
146 defined as viral load detection <400 copies/mL in a measure at least 180 days after enrollment;  
147 the cut-off was consistent with the laboratory detection limits in the study period [19]. Retention  
148 in care was determined by a person's attendance at two medical visits in a period of more than  
149 ninety days, as per the U.S. Health Resources and Services Administration definition.

150 We considered PLWH to be LTFU if they informed staff that they left the program or if they  
151 fulfilled program abandonment criteria, defined by the Peruvian Ministry of Health as PLWH  
152 whose ART is not picked-up by the person themselves or by the designated person for more  
153 than 30 consecutive days (ART was given out monthly in the 2012-2017 study period) since the  
154 scheduled pick-up date [20, 21].

155  
156 For the children of PLWH, the vital status of the parent with HIV by the end of follow-up defined  
157 HIV orphanhood. We considered death for single-parent HIV orphanhood, and the following  
158 variables as risk of orphanhood due to HIV: PLWH who abandoned ART, lack of viral  
159 suppression, or lack of retention in care.

160

## 161 **Data management and analysis**

162 We merged the four datasets based on the HIV Program's unique patient code, with verification  
163 of patient initials and month/year of birth. Personal identifiers were not stored in the final  
164 dataset. In the data cleaning process, we checked for duplicate records (i.e., the same  
165 individual enrolled twice at different times) and inconsistent information, especially for the  
166 number and ages of children; inconsistencies were found in <0.5% of records and resolved by  
167 reviewing the source documents. Persons without reliable data on parenthood were excluded.

168

169 We also assessed the proportion with childbirth during the first year of follow-up and the  
170 proportions with viral suppression or who were dead at the end of follow-up. Since it was not  
171 possible to identify children who could have both parents in the study, the percentages of single-  
172 parent (at least) orphanhood and children of living PLWH at risk of orphanhood at the end of the  
173 follow-up were presented according to the sex of PLWH.

174

175 For the statistical description of categorical variables, we used frequencies and percentages.  
176 For continuous variables, we used measures of central tendency and dispersion according to  
177 the observed distribution of values, i.e., for normally distributed data, we used means with  
178 standard deviation and for skewed data, we used medians and interquartile ranges. For  
179 inferential statistics, we used bivariate analyses and multivariate models. In the main bivariate  
180 analyses, we compared the proportion of viral suppression by the end of follow-up per groups  
181 defined by the presence of children <20 years of age. For the analysis of the independent and  
182 adjusted effects of our exposure on viral suppression, we used a Cox proportional hazards  
183 model adapted for repeated events with death and LTFU as censored events. In this model, we  
184 included all potentially significant variables, either due to results in bivariate analyses ( $p < 0.2$ ),  
185 or clinical criteria; we also included interactions between PLWH older age ( $\geq 50$  years) and  
186 having partners with children <20 years of age due to their social burden relevance. The  
187 strength of the association was estimated with Hazard Ratios (HR) and 95% confidence  
188 intervals (95% CI). P-values are considered statistically significant when  $< 0.05$ , two-tailed.

189

## 190 **Ethics statement**

191 The Ethics Committee of Universidad Peruana Cayetano Heredia and of the study center  
192 reviewed and approved the study protocol. We used HIV program information as adapted to the  
193 personal data protection regulations of Peru [22], deploying good data management practices to  
194 preserve confidentiality [23].

195

## 196 **Results**

197 Between 2012 and 2017, the clinical records of 3170 of 4051 PLWH (78.3%) enrolled in the HIV  
198 program of the study center indicated that subjects met our inclusion criteria and were included  
199 in the study (**Figure 1**).



200 **Fig 1. Flow chart of the clinic population of persons living with HIV (PLWH) included in**  
201 **the parentage-viral suppression study in Peru.**

202

203 The 3170 PLWH had a median age of 31.6 years (interquartile range [IQR]: 25.4-40.3) and men  
204 accounted for 79.8%, similar to data from the 688 PLWH in the HIV Program who were  
205 excluded due to missing parental data (median age 31.7 years; 78.2% men). Data on residence  
206 indicated that 1399 (44.1%) came from districts outside the clinic catchment area. Almost half  
207 (45.2%) of men self-reported as MSM and most women as heterosexual (90.5%). Stable sexual  
208 partners were reported by 34.7% of men and 70.1% of women.

209

210 At enrollment, 27.2% (862/3170) of PLWH reported being parents of children <20 years of age  
211 (median=2 [IQR: 1-3]; **Table 1**). Of the 978 men with partners, 32.5% (318) had children <20  
212 years of age, and of the 427 women with partners 67.0% (286) had children <20 years of age.  
213 For PLWH without children at any age stage (n=2135), 15.8% (337/2135) reported having a  
214 stable partner with HIV infection. Men were less likely to report having a partner with HIV than  
215 women (17.0% vs. 32.7%). At their first HIV Program clinic visit, 51.1% (1620/3170) of the  
216 participants were <1 month of their initial HIV diagnosis. The median CD4 count at admission  
217 was 248 (IQR: 97-428), men's was 243 (IQR: 94-415.5) and women's was 269 (IQR: 113-461).  
218 47.4% (1504/3170) were in WHO stage 2, 46.3% (1173/2530) of men and 51.7% (331/640) of  
219 women were in the same stage.

220 **Table 1. Baseline characteristics of the 3170 persons living with HIV by parental status.**

|  | <b>Total<br/>N=3170</b> | <b>Children &lt;20 years<br/>of age<br/>N=862 (27.2%)</b> | <b>No children &lt;20<br/>years of age<br/>N=2308 (72.8%)</b> | <b>p value</b> |
|--|-------------------------|---|---|----------------|
| <b>Median follow up in years (IQR)</b>                               | 2.1 (0.79-3.9)          | 2.2 (0.75-3.9)  | 2.1 (0.8-3.9)   |                |
| <b>Sex at birth:</b>   |                         |   |   | < 0.005*       |
| - Male   | 2530 (79.8%)            | 470 (54.52%)  | 2060 (89.25%)   |                |
| - Female   | 640 (20.2%)             | 392 (45.48%)  | 248 (10.75%)  |                |
| <b>Average age at admission to HIV program in years<br/>(95% CI)</b> | 31.6 (25.4-40.3)        | 35.3 (29.3-42.6)  | 29.7 (24.5-39.9)  | < 0.005**      |
| <b>Education level</b>   |                         |   |   | <0.005*        |
| - Primary school or less   | 197 (6.2%)              | 95 (11.0%)  | 102 (4.4%)  |                |
| - At least some high school  | 1527 (48.2%)            | 524 (60.8%)   | 1003 (43.5%)  |                |
| - High school and at least some higher education                     | 1390 (43.9%)            | 226 (26.2%)   | 1164 (50.4%)  |                |
| - Unknown  | 56 (1.8%)               | 17 (2.0%)   | 39 (1.7%)   |                |
| <b>Sexual orientation:</b>   |                         |   |   | < 0.005*       |
| - Homosexual   | 1042 (33.1%)            | 6 (0.7%)  | 1036 (45.2%)  |                |

|                                       |              |             |              |         |
|---------------------------------------|--------------|-------------|--------------|---------|
| - Bisexual                            | 554 (17.6%)  | 75 (8.8%)   | 479 (20.9%)  |         |
| - Heterosexual                        | 1552 (49.3%) | 775 (90.5%) | 777 (33.9%)  |         |
| <b>WHO stage:</b>                     |              |             |              | 0.392*  |
| - 1                                   | 363 (11.5%)  | 103 (12.0%) | 260 (11.3%)  |         |
| - 2                                   | 1504 (47.4%) | 394 (45.7%) | 1110 (48.1%) |         |
| - 3                                   | 705 (22.2%)  | 209 (24.3%) | 496 (21.5%)  |         |
| - 4                                   | 506 (16.0%)  | 135 (15.7%) | 371 (16.1%)  |         |
| - Unknown                             | 92 (2.9%)    | 21 (2.4%)   | 71 (3.1%)    |         |
| <b>Having a stable sexual partner</b> | 1405 (44.3%) | 604 (70.1%) | 801 (34.7%)  | <0.005* |
| <b>Partner HIV diagnosis:</b>         |              |             |              | <0.005* |
| - Negative                            | 311 (9.8%)   | 143 (16.6%) | 168 (7.3%)   |         |
| - Positive                            | 638 (20.1%)  | 260 (30.2%) | 378 (16.4%)  |         |
| - Unknown                             | 393 (12.4%)  | 170 (19.7%) | 223 (9.7%)   |         |
| <b>Marital status:</b>                |              |             |              | <0.005* |
| -Married /cohabiting                  | 809 (25.5%)  | 517 (60.0%) | 292 (12.7%)  |         |
| -Divorced /separated                  | 165 (5.2%)   | 92 (10.7%)  | 73 (3.2%)    |         |

|  |              |             |              |        |
|--|--------------|-------------|--------------|--------|
| -Single  | 2138 (67.4%) | 227 (26.3%) | 1911 (82.8%) |        |
| -Widow   | 50 (1.6%)    | 24 (2.8%)   | 26 (1.1%)    |        |
| <b>Area of residence:</b>                                  |              |             |              | 0.082* |
| -North of Lima   | 1202 (37.9%) | 344 (39.9%) | 858 (37.2%)  |        |
| -Rest of Lima and Callao province                          | 1385 (43.7%) | 345 (40.0%) | 1040 (45.1%) |        |
| -Outside Lima and Callao province                          | 284 (9.0%)   | 85 (9.9%)   | 199 (8.6%)   |        |
| -Unknown   | 299 (9.4%)   | 88 (10.2%)  | 211 (9.1%)   |        |
| <b>Antiretroviral therapy (ART) regimen at time of HIV</b> |              |             |              | 0.005* |
| <b>Program admission:</b>                                  |              |             |              |        |
| - With NRTI  | 2765 (87.2%) | 761 (88.3%) | 2004 (86.8%) |        |
| - Without NRTI   | 20 (0.6%)    | 11 (1.3%)   | 9 (0.4%)     |        |
| - Unknown  | 385 (12.2%)  | 90 (10.4%)  | 295 (12.8%)  |        |
| <b>Number of ART regimens prior to HIV Program</b>         |              |             |              | 0.008* |
| <b>admission:</b>  |              |             |              |        |
| - None   | 2438 (76.9%) | 661 (76.7%) | 1777 (77.0%) |        |
| - 1-3  | 339 (10.7%)  | 103 (11.9%) | 236 (10.2%)  |        |
| - 4 or more  | 13 (0.4%)    | 8 (0.9%)    | 5 (0.2%)     |        |

|                  |             |             |             |
|------------------|-------------|-------------|-------------|
| - <b>Unknown</b> | 380 (12.0%) | 90 (10.47%) | 290 (12.6%) |
|------------------|-------------|-------------|-------------|

**Number of ART regimens at end of follow up after HIV**

0.434\*

**Program admission:**

|                    |              |             |              |
|--------------------|--------------|-------------|--------------|
| - <b>None</b>      | 1159 (36.6%) | 316 (36.7%) | 843 (36.57%) |
| - <b>1-3</b>       | 1570 (49.5%) | 437 (50.7%) | 1133 (49.1%) |
| - <b>4 or more</b> | 61 (1.9%)    | 19 (2.2%)   | 42 (1.8%)    |
| - <b>Unknown</b>   | 380 (12.0%)  | 90 (10.4%)  | 290 (12.6%)  |

---

221 \* Chi square test

222 \*\* Wilcoxon test

223 † No records with blank data representing less than 5% of the total were included

224 IQR: interquartile range, CI: confidence interval, ART: antiretroviral treatment, WHO: World Health Organization, NRTI: nucleoside

225 reverse transcriptase inhibitors

226 For WHO stage, see reference 24.

227 At time of HIV Program enrollment, 88.1% (2792/3170) participants were started on ART, 99.0%  
228 (2765/2792) with regimens containing nucleotide reverse transcriptase inhibitors. 56.2%  
229 (1570/2792) changed ART regimens, sometimes more than once. In 3.4% of PLWH (109/3170)  
230 the birth of a child was identified during the first year of follow-up, 89% (97/109) in women.  
231 80.1% (2540/3170) of people had a viral load measurement made at least 180 days after the  
232 first visit and 65.5% (2075/3170) achieved viral suppression at the end of the follow-up. Of the  
233 862 PLWH with children <20 years of age, 61.9% (534/862) achieved viral suppression at the  
234 end of follow-up. 6.9% (218/3170) of PLWH died during follow-up; of whom 30.3% (66/218) had  
235 children <20 years of age.

236

237 The final survival analysis includes 3129 PLWH applicable data records for non-viral  
238 suppression at end of follow-up (**table 2**).

239 **Table 2. Survival analysis for the outcome viral non-suppression at the end of follow-up of the study for 3129 persons living**  
 240 **with HIV.**

| <b>Variable</b>  | <b>Hazard ratio</b> | <b>95% confidence interval (CI)</b> | <b>p value</b> |
|--|---------------------|-------------------------------------|----------------|
| <b>Children &lt;20 years of age</b>                      |                     |                                     |                |
| - No   | Reference           |                                     |                |
| - Yes  | 3.53                | 1.88 – 6.62                         | <0.001         |
| <b>Birth of child during the first year of follow-up</b> |                     |                                     |                |
| - No   | Reference           |                                     |                |
| - Yes  | 1.81                | 1.30 – 2.50                         | <0.001         |
| <b>Age at admission to the HIV Program</b>               | 0.99                | 0.98 – 1.00                         | 0.016          |
| <b>Sex</b>   |                     |                                     |                |
| - Male   | Reference           |                                     |                |
| - Female   | 0.92                | 0.76 – 1.12                         | 0.412          |
| <b>Education level</b>                                   |                     |                                     |                |
| - Primary school or less                                 | Reference           |                                     |                |

|  |           |             |        |
|--|-----------|-------------|--------|
| - At least some high school                              | 0.68      | 0.54 – 0.86 | 0.001  |
| - High school and at least some higher education         | 0.66      | 0.52 – 0.85 | 0.001  |
| <b>Sexual orientation</b>                                |           |             |        |
| - Homosexual   | Reference |             |        |
| - Bisexual   | 0.92      | 0.76 – 1.11 | 0.358  |
| - Heterosexual   | 1.05      | 0.89 – 1.25 | 0.561  |
| <b>Period of entrance to the HIV Program</b>             |           |             |        |
| - 2012 – 2014  | Reference |             |        |
| - 2015 – 2017  | 2.83      | 2.43 – 3.28 | <0.001 |
| <b>Having a stable sexual partner</b>                    |           |             |        |
| - No   | Reference |             |        |
| - Yes  | 0.94      | 0.80 – 1.10 | 0.421  |
| <b>On ART at HIV Program admission</b>                   |           |             |        |
| - No   | Reference |             |        |
| - Yes  | 0.04      | 0.03 – 0.04 | <0.001 |
| <b>CD4 count result at time of HIV Program admission</b> |           |             |        |
| - No   | Reference |             |        |



|   |      |             |        |
|---|------|-------------|--------|
| - Yes   | 1.00 | 0.99 – 1.00 | <0.001 |
| <b>Relationship between having a partner and children</b> |      |             |        |
| <20 years of age  | 0.72 | 0.54 – 0.97 | 0.030  |
| <b>Relationship between older age and having children</b> |      |             |        |
| <20 years of age  | 0.97 | 0.96 – 0.99 | 0.001  |

---

242 **Figure 2** shows the overall less likelihood of achieving viral suppression at the end of the follow-  
243 up of PLWH with children <20 years of age in comparison to those without children <20 years of  
244 age. **Figures 3 and 4** show that women with children <20 years of age are less likely to achieve  
245 the outcome of interest in comparison to women without children <20 years of age; in contrast,  
246 men in both groups follow almost the same pattern of viral suppression over time. In **figure 5**,  
247 the classification by having children above or under 20 years-old evidence that the group with  
248 younger children were less likely to achieve viral suppression in comparison to the rest of the  
249 groups; the one with older children only had better performance at the end of the follow-up.

250 **Fig 2. Kaplan-Meier curve: viral suppression outcome at the end of follow-up of the study**  
251 **by having children <20 years of age for 3129 persons living with HIV.**

252 **Fig 3 and 4. Kaplan-Meier curve: viral suppression outcome at the end of follow-up of the**  
253 **study by sex, classified by having children <20 years of age for 3129 persons living with**  
254 **HIV.**

255 **Fig 5. Kaplan-Meier curve: viral suppression outcome at the end of follow-up of the study**  
256 **by children age groups for 3129 persons living with HIV.**

257

258 At the end of the follow-up (median: 2.1 years), we estimated that 358 PLWH were mothers of  
259 578 children <20 years of age and 428 PLWH were fathers of 674 children <20 years of age;  
260 because of the anonymity of the information and the possibility of both parents' inclusion in our  
261 population, we could not estimate the total number of children. By the end of follow up,  
262 orphanhood affected 4.3% (25/578) of children <20 years of age of mothers with HIV, and 11%  
263 (74/674) of children <20 years of age of fathers with HIV. 69.6% (402/578) of children of  
264 mothers with HIV and 69.3% (467/674) of children of fathers with HIV were at risk of  
265 orphanhood. At the end of the follow-up, 31.1% (270/869) of children <20 years of age at risk of

266 orphanhood and 37.4% (37/99) of orphan children <20 years of age were 5 years old or less.  
267 Women with HIV placed their children at risk of orphanhood due to non-retention in care (140,  
268 50.5%), non-viral suppression (118, 42.6%) or ART abandonment (19, 6.9%). Men with HIV  
269 placed their children at risk of orphanhood due to non-retention in care (178, 56.7%), non-viral  
270 suppression (124, 39.5%) or ART abandonment (12, 3.8%).

271

## 272 **Discussion**

273

274 In our clinic-based study in Lima, Peru, PLWH with children <20 years of age were less likely to  
275 achieve viral suppression by the end of 2+ years of follow-up. This was also the case for PLWH  
276 who reported the birth of a child during the first year after enrollment. Our population had  
277 demographic characteristics similar to PLWH whose parental status was unknown, suggesting  
278 the generalizability of our findings.

279

280 Our hypothesis was that PLWH parenthood may be a stress that paradoxically increases  
281 parental health vulnerability. We found evidence that, in fact, PLWH who are parents had less  
282 probability of viral suppression. In front of the infants' needs, those of the parents might be  
283 overlooked, postponed or, even, not addressed [25]. This situation poses additional health  
284 implications for people living with chronic diseases, including HIV [26-28], particularly if the  
285 social support is limited or access to health services is burdensome. During the postpartum  
286 period, greater anxiety, fatigue, depression and decreased self-care are frequent for women [29,  
287 30]. Men are also prone to depression, especially if the partner is depressed [31], and to anxiety  
288 related to their own role as a father and to the economic factors that influence their family  
289 stability [32-34].

290

291 The proportion of PLWH with children <20 years of age by time of enrollment in our HIV  
292 program was substantially higher in women compared to men. In Peru, the laws still limit LGBT  
293 parenting, which may explain our results. Women are still the main caregivers of children across  
294 cultures; however, our results suggest that parenthood of children <20 years of age would also  
295 affect HIV care in men, although to a lesser extent. A parallel study at our study center found  
296 that women showed less adherence and retention in care in puerperium rather than during  
297 pregnancy [35]. Figure 3 shows less likelihood of viral suppression in women having children  
298 <20 years of age in comparison to the ones without them, whereas results remain almost the  
299 same for both men groups. Parents of young children tend to be young, which has been related  
300 to HIV care interruption and lost to follow up [36]. These aspects emphasize that parental health  
301 vulnerability of PLWH should be understood and not dismissed, with a special focus on women.  
302 In our study, pregnancy was the most frequent reason for HIV diagnosis in women. In many  
303 cases, childbirth occurs during the stage of initial coping thus probably prior to disclosure to the  
304 trusted extended family, reducing the offer and request of support due to stigma [37-40];  
305 however, we did not collect disclosure data. This aspect might explain the association between  
306 non-viral suppression and childbirth during the first year of follow-up described. It could also  
307 explain the results in Figure 5 that shows a difference between the children ages groups: PLWH  
308 whose diagnosis was done and disclosed years ago might be more likely to have a strongest  
309 support network; 75% of our population with children >18 years old were enrolled in the HIV  
310 program for more than three years.

311  
312 Programs worldwide have overlooked HIV-related interventions targeted to the PLWH's children  
313 and adolescents who might need to receive education on HIV-related topics and mental health  
314 services [41]. WHO have recommended differentiated service delivery responsive to the  
315 preferences and needs of PLWH, including those of parenting [42]. This calls for HIV programs  
316 whose services display flexibility towards parental and family needs. At our setting, the HIV

317 National Guidelines demanded multidisciplinary visits before ART start for most of the study  
318 period [20, 21]; however, the administrative systems only authorized one visit per day.  
319 Complying with multiple visits may particularly challenge people with children under care and  
320 limited social support.

321

322 Because threats to parental health put their children at risk, we also analyzed orphanhood and  
323 risk of orphanhood for the children <20 years of age in our study population. We found that the  
324 percentage of orphans <20 years of at least one HIV parent exceeds the 6.6% national average  
325 [9]. Orphans of PLWH tend to have greater depression, anxiety, adaptation problems, and  
326 learning difficulties compared to orphans due to other causes, which may reduce their future  
327 opportunities [43-45]. The surrogate caregivers' role is fundamental in mitigating negative  
328 effects [46].

329

330 By the end of follow-up, almost 60% of the children <20 years of age of our PLWH study  
331 population were at risk of orphanhood, mainly because of no retention in care of their parents.  
332 Due to their parents' suffering and assuming the duty to care for them, these children may  
333 encounter more consequences than actual orphans [44]. A well-established program should  
334 create a better household environment that benefits both the individual and their children.

335 The country has in place policies for children in poverty but not for children of sick people at risk  
336 of death. The realization of children's entitlements primarily depends on families, but states  
337 have the duty to ensure such rights through adequate social protection [47]. Thus, our results  
338 suggest the need of specific health and social protection programs for PLWH and their children.

339

340 The study limitations include selection bias due to data from a Cohort Study. However, we did  
341 not find major demographic differences in comparison with the non-participant HIV program  
342 population. We did not directly control the databases collection procedures; but they are

343 systematically applied by trained nursing personnel, and we conducted comprehensive data  
344 management to limit inconsistencies. Valuable covariables such as disclosure, adherence, or  
345 mental health were not available to use. Our database does not differentiate PLWH who are  
346 considered lost to follow up per the retention in care definition but continue to pick up their ART.  
347 We did not determine the total number of children in orphanhood and risk of orphanhood nor the  
348 HIV status of the children. The study center corresponds to a reference HIV clinic, which may  
349 limit the extrapolation of conclusions. As the main strengths of our study, we gathered data for a  
350 large study population with an average follow-up of 2+ years to evaluate the potential impact of  
351 parenthood in the care of PLWH and the situation of orphanhood and risk of orphanhood of their  
352 children <20 years of age.

353  
354 Future research in Peru should address the effects of orphaned and at-risk children of parents  
355 with AIDS, in addition to evaluating other causes of viral non-suppression related to parenthood.  
356 We recommend that the next generation of HIV programs should implement family-centered  
357 services, a vision which may further enrich their societal impact.

358

## 359 **Conclusions**

360

361 The presence of children <20 years of age can have a negative effect on viral suppression in  
362 PLWH; likewise, children with PLWH are at high risk of orphanhood. The confluence of  
363 increased parental health vulnerability in a context of limited social support and bureaucratic  
364 health services may work against continuity of HIV care and threat parental health, which  
365 ultimately creates risks also for the children. HIV programs should adapt their services  
366 considering individual and family needs of PLWH.

## 367 **Acknowledgments**

368 We thank the Program For Advanced Research Capacities For Aids In Peru (Paracas) team  
369 and the HIV program personnel from Cayetano Heredia Hospital for their support. Fernando  
370 Mejía, MD provided guidance in data collection. Sten Vermund reviewed the manuscript.

## 371 **Data availability statement**

372 Due to the sensitive nature of some of the data, including that related to children, data included  
373 in this manuscript have not been placed in an open-access database. However, the data that  
374 support the findings of this study are available from the corresponding author upon reasonable  
375 request. Inquiries should be directed to the corresponding author.

## 376 **References**

- 377 1. AARP and National Alliance for Caregiving. Caregiving in the United States 2020.  
378 AARP. 2020 May;1:97.
- 379 2. Ruane A. The Fifty-Third Session of the United Nations Commission on the Status of  
380 Women: The Equal Sharing Of Responsibilities Between Women And Men, Including  
381 Caregiving In The Context Of HIV/AIDS. *Int Fem J Polit.* 2011 Mar 1;13(1):109-18.
- 382 3. Yehia BR, Stewart L, Momplaisir F, Mody A, Holtzman CW, Jacobs LM, et al. Barriers  
383 and facilitators to patient retention in HIV care. *BMC Infect. Dis.* 2015 Jun 28;15(1):246.
- 384 4. Sakyi KS, Lartey MY, Kennedy CE, Dension JA, Mullany LC, Owusu PG, et al. Barriers  
385 to maternal retention in HIV care in Ghana: key differences during pregnancy and the  
386 postpartum period. *BMC Pregnancy Childbirth.* 2020 Jul 17;20(1):398.
- 387 5. Holtzman CW, Shea JA, Glanz K, Jacobs LM, Gross R, Hines J, et al. Mapping patient-  
388 identified barriers and facilitators to retention in HIV care and antiretroviral therapy  
389 adherence to Andersen's Behavioral Model. *AIDS Care.* 2015 Jul 3;27(7):817-28.
- 390 6. Muze RH. Parenting and child outcomes of HIV-infected African American mothers: a  
391 literature review. *J Community Health Nurs.* 2013;30(3):164-71.
- 392 7. Lachman JM, Cluver LD, Boyes ME, Kuo C, Casale M. Positive parenting for positive  
393 parents: HIV/AIDS, poverty, caregiver depression, child behavior, and parenting in South  
394 Africa. *AIDS Care.* 2014;26(3):304-13.
- 395 8. Bailey H, Zash R, Rasi V, Thorne C. HIV treatment in pregnancy. *Lancet HIV.* 2018  
396 Aug;5(8):e457-67.



- 397 9. Instituto Nacional de Estadística e Informática. Encuesta Demográfica y de salud  
398 familiar-ENDES 2019. INEI. 2020:413.
- 399 10. Corless IB, Hoyt AJ, Tyer-Viola L, Sefcik E, Kempainen J, Holzemer WL, et al. 90-90-  
400 90-Plus: Maintaining Adherence to Antiretroviral Therapies. *AIDS Patient Care STDS*.  
401 2017 May 1;31(5):227-36.
- 402 11. Mejia F. Características clínico epidemiológicas y factores asociados a abandono del  
403 tratamiento antirretroviral de gran actividad (TARGA) en pacientes con  
404 infección VIH/Sida de un hospital de tercer nivel en Lima. Peru: Universidad Peruana  
405 Cayetano Heredia; 2013.
- 406 12. Crabtree-Ramírez BE, Caro-Vega Y, Belaunzarán-Zamudio PF, Shepherd BE, Rebeiro  
407 PF, Veloso V, et al. Temporal changes in ART initiation in adults with high CD4 counts in  
408 Latin America: a cohort study. *J. Int. AIDS Soc.* 2019 Dec;22(12):e25413-n/a.
- 409 13. Mendiola A, Gonzalez-Lagos E, Gotuzzo E. Continuidad en el Cuidado del Binomio  
410 Madre Niño en el Contexto de VIH con énfasis en el seguimiento post parto: estudio  
411 operacional en un centro de referencia de Lima Metropolitana 2004-2013. Peru:  
412 Universidad Peruana Cayetano Heredia; 2014.
- 413 14. Escueta M, Whetten K, Ostermann J, O'Donnell K. Adverse childhood experiences,  
414 psychosocial well-being and cognitive development among orphans and abandoned  
415 children in five low-income countries. *BMC Int. Health Hum. Rights*. 2014 Mar  
416 10;14(1):6.
- 417 15. UNAIDS. Data Country Peru. 2022; Available  
418 at: <https://www.unaids.org/en/regionscountries/countries/peru>. Accessed Aug 27, 2023.

- 419 16. Yohannes NT, Jenkins CA, Clouse K, Cortés CP, Mejía Cordero F, Padgett D, et al.  
420 Timing of HIV diagnosis relative to pregnancy and postpartum HIV care continuum  
421 outcomes among Latin American women, 2000 to 2017. *J. Int. AIDS Soc.* 2021  
422 May;24(5):e25740.
- 423 17. Peruvian Ministry of Health. Norma técnica de salud N° 097-MINSA/DGSP-V.03 “Norma  
424 Técnica de Salud de Atención Integral del Adulto con Infección por el virus de la  
425 Inmunodeficiencia Humana (VIH), 2018. Peru. 2018.
- 426 18. World Health Organization. Adolescent health. 2022; Available  
427 at: [https://www.who.int/health-topics/adolescent-health#tab=tab\\_1](https://www.who.int/health-topics/adolescent-health#tab=tab_1). Accessed Dec 1,  
428 2022.
- 429 19. Panel on Antiretroviral Guidelines for Adults and Adolescents. Guidelines for the Use of  
430 Antiretroviral Agents in Adults and Adolescents with HIV. 2021 Aug 16.
- 431 20. Peruvian Ministry of Health. Norma Técnica de Salud de Atención Integral del Adulto  
432 con Infección por el virus de la Inmunodeficiencia Humana (VIH), 2012. Peru. 2012.
- 433 21. Peruvian Ministry of Health. Norma Técnica de Salud de Atención Integral del Adulto  
434 con Infección por el virus de la Inmunodeficiencia Humana (VIH), 2014. Peru. 2014.
- 435 22. Peruvian Ministry of Health. Ley de protección de datos personales. Peru. 2013.
- 436 23. Sweeney P, Gardner LI, Buchacz K, Garland PM, Mugavero MJ, Bosshart JT, et al.  
437 Shifting the Paradigm: Using HIV Surveillance Data as a Foundation for Improving HIV  
438 Care and Preventing HIV Infection. *Milbank Q.* 2013 Sep;91(3):558-603.
- 439 24. World Health Organization. WHO case definitions of HIV for surveillance and revised  
440 clinical staging and immunological classification of HIV-related disease in adults and  
441 children. 2007.

- 442 25. Fahey JO, Shenassa E. Understanding and Meeting the Needs of Women in the  
443 Postpartum Period: The Perinatal Maternal Health Promotion Model. *J Midwifery*  
444 *Womens Health*. 2013 Nov;58(6):613-21.
- 445 26. Payne S, Doyal L. Women, men and health. In: Detels R, Gulliford M, Karim QA, Tan  
446 CC, editors. *Oxford Textbook of Global Public Health 6E*. Sixth ed. Oxford: Oxford  
447 University Press; 2015. p. 1328-41.
- 448 27. Wielding S, Scott A. What women want: social characteristics, gender-based violence  
449 and social support preferences in a cohort of women living with HIV. *Int J STD AIDS*.  
450 2017 Apr;28(5):486-90.
- 451 28. World Health Organization. HIV/AIDS. In: Sabate E, editor. *Adherence to long-term*  
452 *therapies. Evidence for action 1E*. First ed. Switzerland: WHO Library Cataloguing-in-  
453 Publication Data; 2003. p. 95-106.
- 454 29. Haran C, van Driel M, Mitchell BL, Brodribb WE. Clinical guidelines for postpartum  
455 women and infants in primary care—a systematic review. *BMC Pregnancy Childbirth*.  
456 2014 Jan 29;14(1):51.
- 457 30. Declercq ER, Sakala C, Corry MP, Applebaum S, Herrlich A. Major Survey Findings of  
458 Listening to Mothers(SM) III: New Mothers Speak Out: Report of National Surveys of  
459 Women’s Childbearing Experiences Conducted October-December 2012 and January-  
460 April 2013. *J Perinat Educ*. 2014 Winter;23(1):17-24.
- 461 31. Sundström Poromaa I, Comasco E, Georgakis MK, Skalkidou A. Sex differences in  
462 depression during pregnancy and the postpartum period. *J Neurosci Res*. 2017 Jan  
463 2;95(1-2):719-30.

- 464 32. Wang D, Li YL, Qiu D, Xiao SY. Factors Influencing Paternal Postpartum Depression: A  
465 Systematic Review and Meta-Analysis. *J Affect Disord.* 2021 Oct 1;293:51-63.
- 466 33. Darwin Z, Galdas P, Hinchliff S, Littlewood E, McMillan D, McGowan L, et al. Fathers'  
467 views and experiences of their own mental health during pregnancy and the first  
468 postnatal year: a qualitative interview study of men participating in the UK Born and Bred  
469 in Yorkshire (BaBY) cohort. *BMC Pregnancy Childbirth.* 2017 Jan 26;17(1):45.
- 470 34. Tarsuslu B, Durat G, Altınkaynak S. Babalarda. Postpartum Depresyon ve İlişkili Risk  
471 Faktörleri: Sistematik Derleme [Postpartum Depression in Fathers and Associated Risk  
472 Factors: A Systematic Review]. *Turk Psikiyatri Derg.* 2020 Winter;31(4):280-89.
- 473 35. Contreras A, Liu C. Estudio de Métodos Mixtos (Fase 1) sobre la Adherencia al  
474 Tratamiento Antirretroviral y Retención en Cuidado durante los Periodos de Gestación y  
475 Postparto. Peru: Universidad Peruana Cayetano Heredia; 2018.
- 476 36. Frijters EM, Hermans LE, Wensing AMJ, Devillé WLJM, Tempelman HA, De Wit JBF.  
477 Risk factors for loss to follow-up from antiretroviral therapy programmes in low-income  
478 and middle-income countries. *AIDS.* 2020 Jul 15;34(9):1261-1288.
- 479 37. Sakyi KS, Lartey MY, Kennedy CE, Denison JA, Sacks E, Owusu PG, et al. Stigma  
480 toward small babies and their mothers in Ghana: A study of the experiences of  
481 postpartum women living with HIV. *PLoS One.* 2020 Oct 16;15(10):e0239310.
- 482 38. Onono M, Odwar T, Abuogi L, Owuor K, Helova A, Bukusi E, et al. Effects of  
483 Depression, Stigma and Intimate Partner Violence on Postpartum Women's Adherence  
484 and Engagement in HIV Care in Kenya. *AIDS Behav.* 2020 Jun 1;24(6):1807-15.

- 485 39. Tam M, Amzel A, Phelps BR. Disclosure of HIV serostatus among pregnant and  
486 postpartum women in sub-Saharan Africa: a systematic review. *AIDS Care*. 2015 Apr  
487 3;27(4):436-50.
- 488 40. King EJ, Yakovleva A, Lisecki SR, Shastina E, Sukhova N, Titina E, et al. Social support  
489 and postpartum adherence to HIV treatment: a community-based participatory research  
490 study in Russia. *Eur J Public Health*. 2021 Feb 1;31(1):63-7.
- 491 41. Mukumbang FC, Knight L, Masquillier C, Delport A, Sematlane N, Dube LT, et al.  
492 Household-focused interventions to enhance the treatment and management of HIV in  
493 low- and middle-income countries: a scoping review. *BMC Public Health*. 2019 Dec  
494 16;19(1):1682.
- 495 42. Ford N, Geng E, Ellman T, Orrell C, Ehrenkranz P, Sikazwe I, et al. Emerging priorities  
496 for HIV service delivery. *PLoS Med*. 2020 Feb 14;17(2):e1003028.
- 497 43. Sharp C, Jardin C, Marais L, Boivin M. Orphanhood by AIDS-Related Causes and Child  
498 Mental Health: A Developmental Psychopathology Approach. *J HIV AIDS*. 2015  
499 Nov;1(3):10.16966/2380-5536.114.
- 500 44. Cluver L, Boyes M, Orkin M, Sherr L. Poverty, AIDS and child health: identifying highest-  
501 risk children in South Africa. *S Afr Med J*. 2013 Oct 11;103(12):910-5.
- 502 45. Nyamukapa CA, Gregson S, Wambe M, Mushore P, Lopman B, Mupambireyi Z, et al.  
503 Causes and consequences of psychological distress among orphans in eastern  
504 Zimbabwe. *AIDS Care*. 2010 Aug;22(8):988-96.
- 505 46. Finlay JE, Fink G, McCoy DC, Tavárez LC, Chai J, Danaei G, et al. Stunting risk of  
506 orphans by caregiver and living arrangement in low-income and middle-income  
507 countries. *J Epidemiol Community Health*. 2016 Aug;70(8):784-90.

- 508 47. Clark H, Coll-Seck AM, Banerjee A, Peterson S, Dalglish SL, Ameratunga S, et al. A  
509 future for the world's children? A WHO-UNICEF-Lancet Commission. *Lancet*. 2020 Feb  
510 22;395(10224):605-658.

PLWH enrolled in the HIV program 2012-2017 (n= 4051)



PLWH over 18 years with confirmatory HIV test (n= 3945)



Missing information about

PLWH included in final study



Without children <20 years of age  
n = 2308 (72.8%)



With children <20 years of age  
n=862 (27.2%)

Fig1

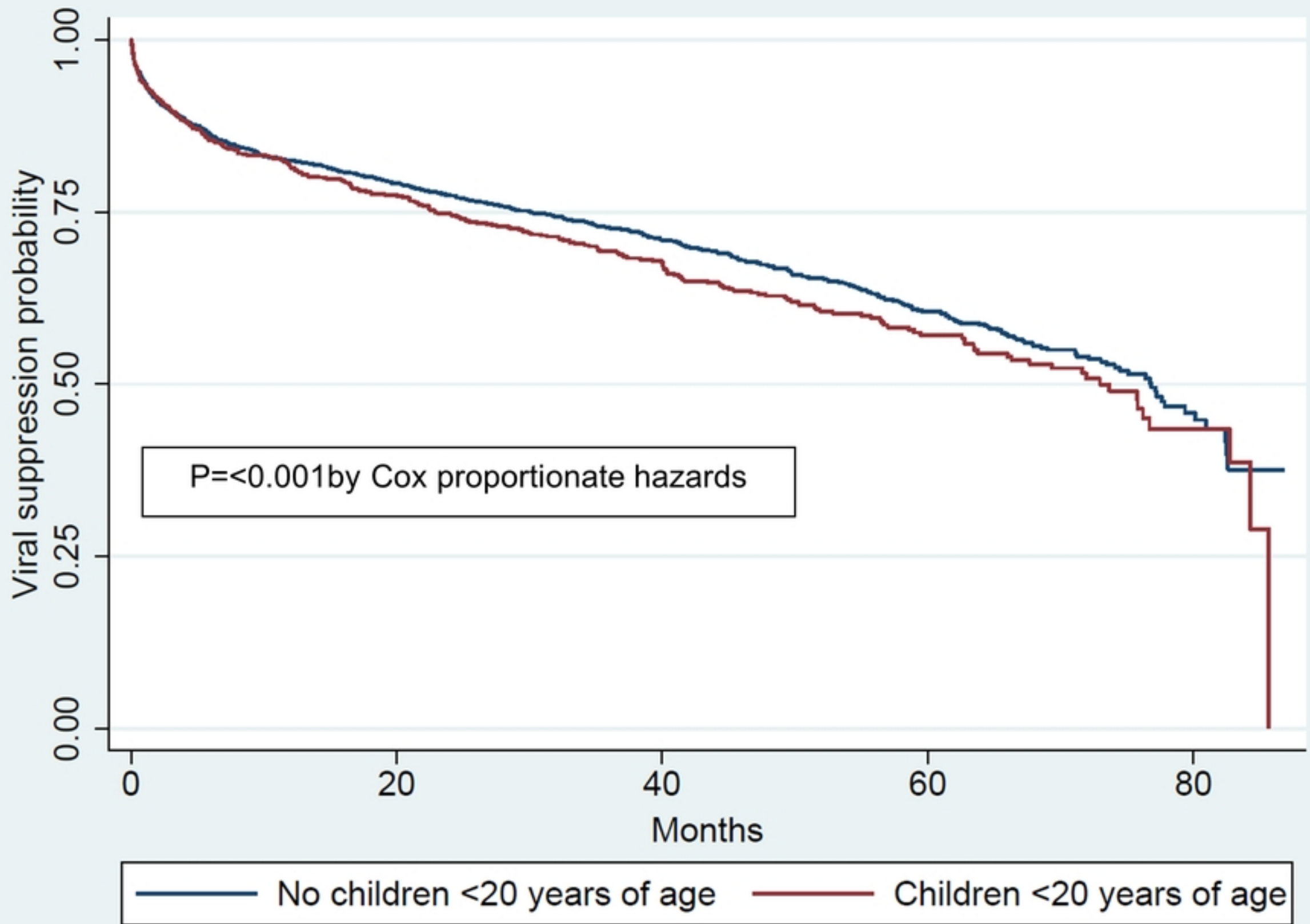


Fig2



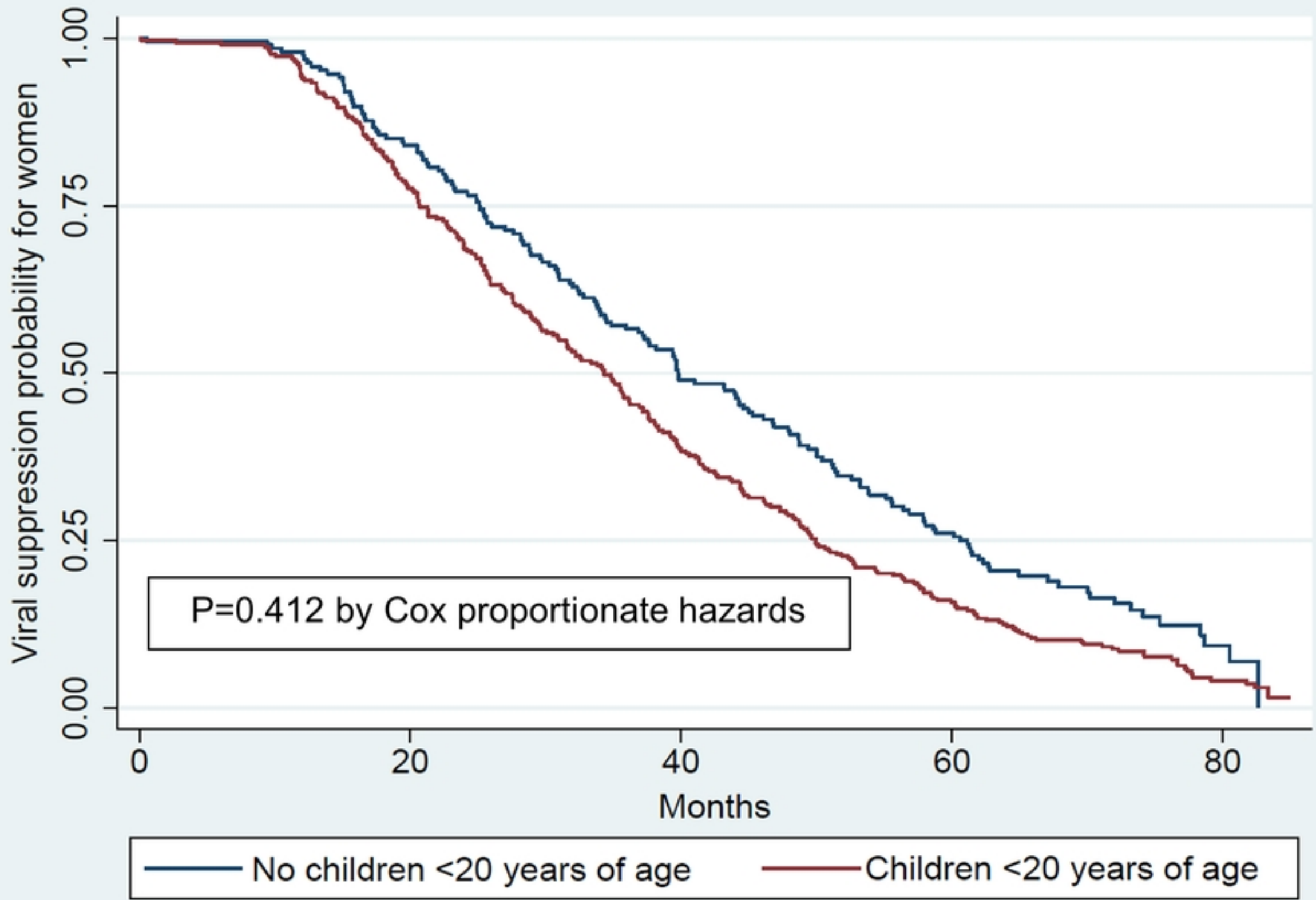


Fig3

Viral suppression probability for men

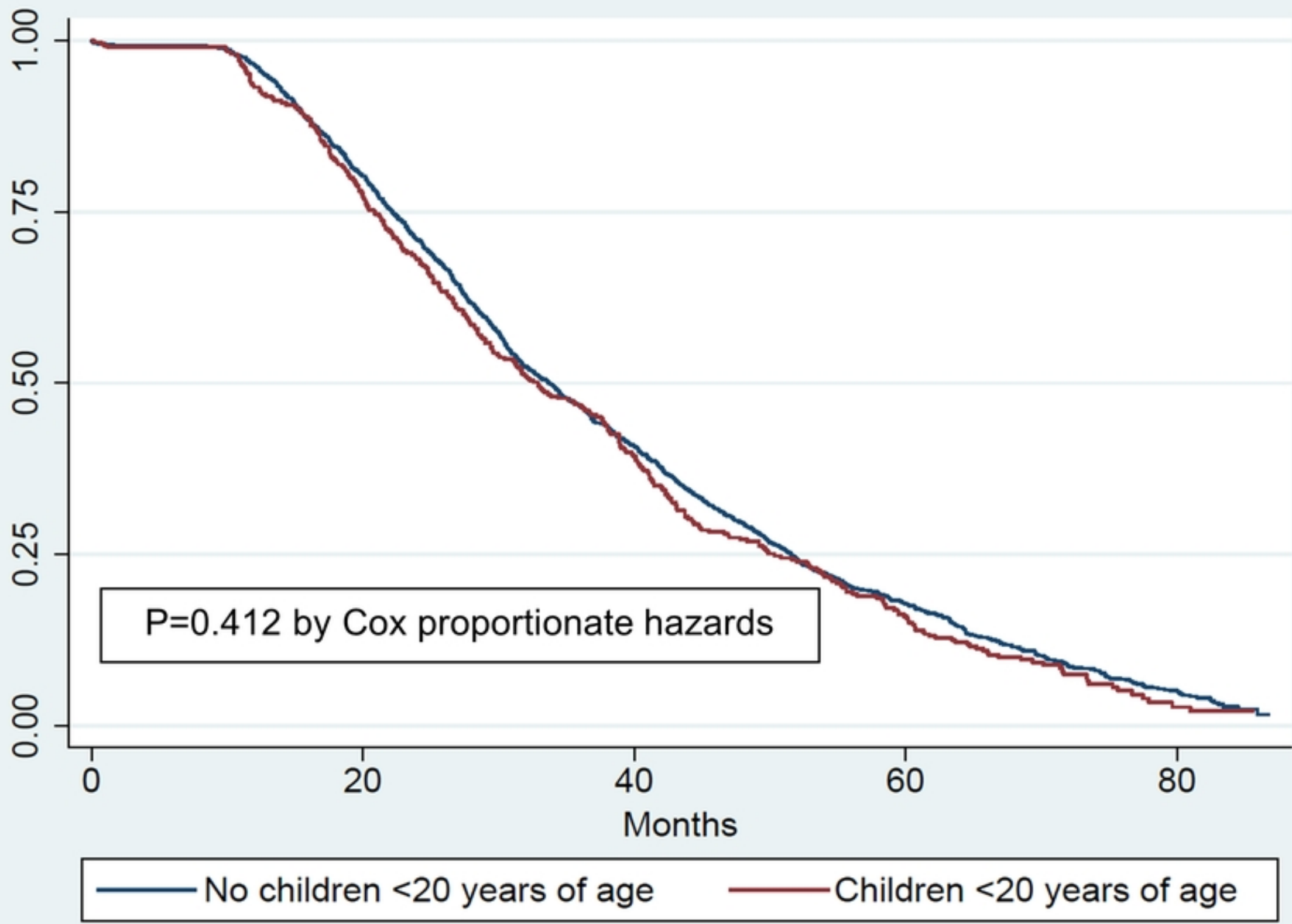


Fig4

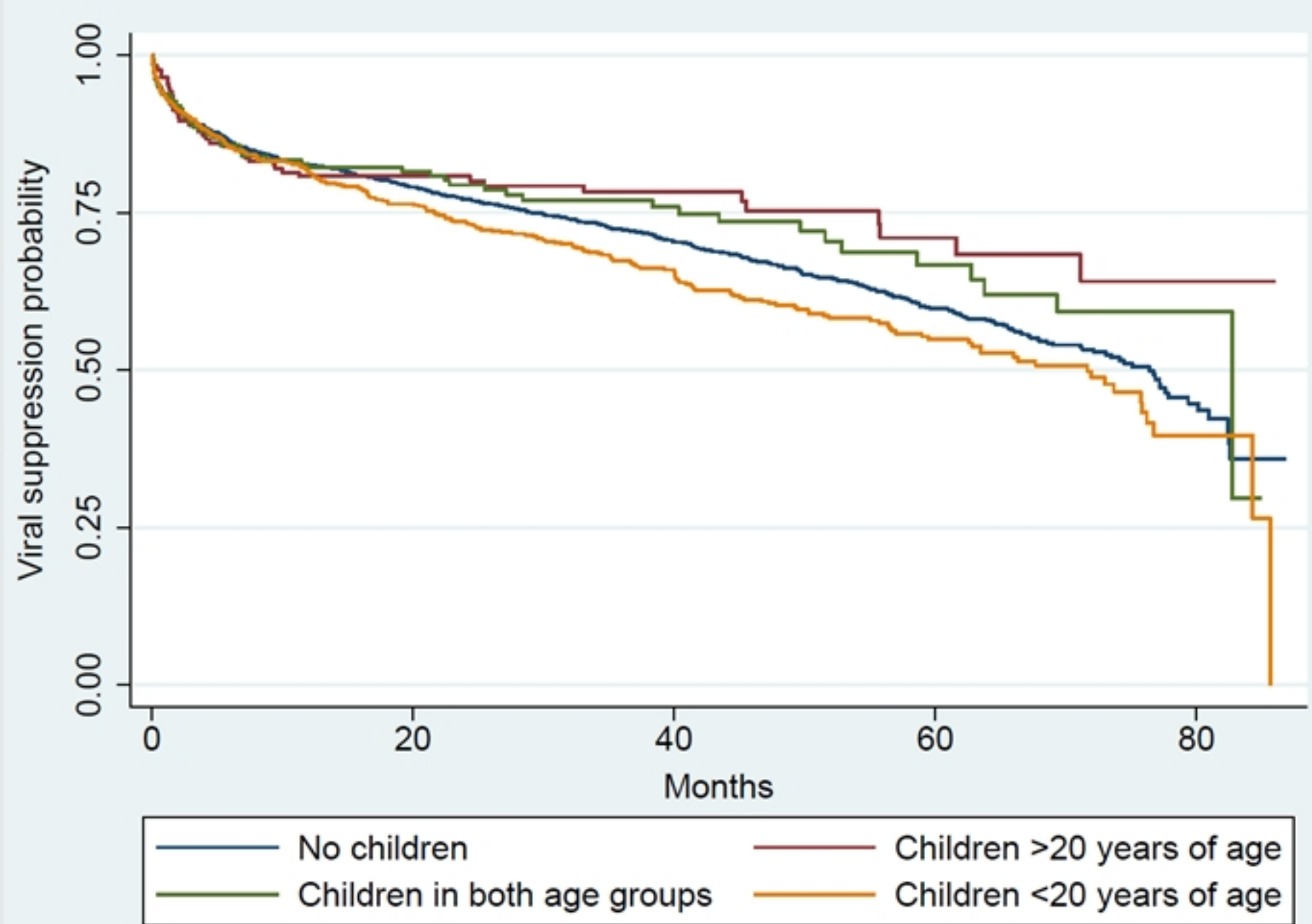


Fig5