

18 **Abbreviations**

19

20 **CHIKV:** Chikungunya Virus

21 **ELISA:** Enzyme Linked Immunosorbent Assay

22 **IgG:** Immunoglobulin G

23 **IgM:** Immunoglobulin M

24 **RT-qPCR:** quantitative Reverse-transcriptase polymerase chain reaction

25 **WHO** World Health Organization

26

27

28

29

Abstract

30

31 The recurrence of Chikungunya virus poses a significant public health concern, given its
32 association with numerous epidemic episodes in Africa, Asia, and India. Since the virus
33 was first detected in Ethiopia in 2016, the disease has been identified in different parts of
34 the country, emphasizing the need for up-to-date epidemiological data on the status of
35 Chikungunya in Ethiopia. We conducted a systematic review and meta-analysis using
36 online published articles between 2016 and 2023 from PubMed, Scopus, and Google
37 Scholar databases. The PRISMA guideline was thoroughly followed and registered in the
38 Prospective Register of Systematic Reviews (PROSPERO). A set of keywords like
39 'Chikungunya,' 'Chikungunya Virus,' 'Chikungunya Fever,' 'Prevalence,' 'Seroprevalence,'
40 "Risk Factor", "Potential Factors", and 'Ethiopia' were used in the search engines. A total
41 of five articles met the eligibility criteria and were included for data extraction. Meta-
42 analysis was performed using STATA 17 software. The pooled seroprevalence of
43 Chikungunya in Ethiopia was 12.35%. The highest prevalence was reported in Southern
44 Nations, Nationalities, and Peoples' Region (SNNPR) at 43.6%, while the lowest
45 seroprevalence was in Dire Dawa, at approximately 12%. Factors such as occupation,
46 education, age, and sex contributed to prevalence variation. Subgroup meta-analysis
47 showed heterogeneity across the types of studies employed. No indications of publication
48 bias or small-study effects were found in the Begg's test and Egger's test. The findings
49 will help us to understand the trend of Chikungunya in Ethiopia. The findings recommend
50 proactive monitoring or active surveillance of viral diseases and the rigorous enforcement

51 of health systems, as well as One Health measures in Ethiopia, to improve human public
52 health.

53

54 **Keywords:** Chikungunya, Ethiopia, Meta-analysis, Seroprevalence, systematic review

55 INTRODUCTION

56 Chikungunya, a mosquito-borne viral disease, is caused by an RNA virus belonging to
57 the Alphavirus genus of the family Togaviridae, known as Chikungunya virus (CHIKV). It
58 is responsible for millions of documented cases worldwide. While the majority of cases
59 recover within weeks, joint and musculoskeletal pain can persist for months to years' post-
60 infection (1). The disease is characterized by clinical signs such as fever, debilitating
61 severe joint pain, joint swelling, muscle pain, headache, nausea, fatigue and rash (2).

62
63 Chikungunya virus was first isolated during a 1952–53 outbreak in southern Tanzania (3),
64 although the clinical descriptions suggesting its presence as far back as the 1600s (4).
65 Today, CHIKV has become widespread globally, identified in more than 110 countries
66 and represents a significant global public health concern (5). The virus has expanded its
67 geographic range, causing outbreaks in various regions around the world and posing a
68 global public health concern. Factors such as climate change, vector adaptations,
69 urbanization, and human migration have contributed to the spread of the virus to new
70 areas, including regions beyond its historically endemic zones (6).

71 In addition, studies showed that Chikungunya prevalence varies with factors such as
72 occupation, age, sex, and education. Farmers and aged populations are associated with
73 higher prevalences. Gender disparities also play a role, influencing exposure and
74 transmission patterns (7,8).

75 Chikungunya in Ethiopia is becoming a significant public health concern, as it has caused
76 considerable morbidity since first being detected (9). The virus was first documented in

77 Ethiopia in June 2016, with the confirmation of its first case in the Suuf kebele, Dollo Ado
78 district of the Somalia regional state (10) that assumed to be originated from Kenya.
79 Somalia regional state shares a border with the Mandera region of Kenya, where a
80 Chikungunya outbreak was ongoing (11). Since then, Chikungunya has spread rapidly
81 and has been reported in different districts of Ethiopia (12,13).

82 At present, there is no approved vaccine or antiviral therapies available for Chikungunya
83 (14). However, the approach for the treatment, and control and prevention of the diseases
84 is through alleviating the symptoms or supportive treatment, and eliminating the
85 mosquitoes, that transmit the virus (14,15). In addition, public awareness creation through
86 community education and training about the outbreak of emerging and reemerging vector-
87 borne diseases, methods of transmission, and their control and prevention methods
88 remain an important mechanism for managing Chikungunya (14).

89 Rapid and accurate diagnosis is the prerequisite approach for implementation of control
90 and prevention of the disease outbreak although there are limitations in laboratory and
91 public health infrastructure (16). Ethiopia, like many developing nations, struggles with a
92 range of public health challenges that contribute to the outbreak of diseases. Limited
93 healthcare infrastructure and uneven distribution of resources hinder effective prevention,
94 detection, and response to health crises (16).

95 Despite the limitations, Ethiopia made an effort to limit the spread of CHIKV across the
96 country and to prevent the potential transmission of the disease in the affected regions
97 (9). The government was taking vector control measures such as indoor residual

98 spraying, distributing insecticide-treated bed nets and encouraging the population to
99 eliminate a breeding ground for mosquitoes like stagnant water (17).

100 However, the effectiveness of these measures may vary, and there are reports of the
101 disease from various locations of Ethiopia. The disease's current status in Ethiopia is
102 unclear. Knowing the up-to-date epidemiological data of the disease is important for
103 preparedness and implementation of control and prevention of the Chikungunya in
104 Ethiopia. Therefore, this systematic review and meta-analysis aimed to provide current
105 information on Chikungunya diseases and providing valuable insights for health
106 professionals and concerned authorities to prepare effective control and prevention
107 strategies.

108

109

110 **METHODS**

111 **Systematic Review Protocols**

112 The guidelines and procedures of the Preferred Reporting Items for Systematic Reviews
113 and Meta-Analysis (PRISMA) (18), were followed in this systematic review and Meta-
114 analysis (Figure 1), and registered in the database of Prospective Register of Systematic
115 Reviews (PROSPERO) under the reference number CRD42023271579.

116 **Literature Search and Sources**

117 The data were extracted from published public articles available from different electronic
118 databases including Medline/PubMed, Science Direct/Scopus, Google scholar and Web
119 of Science. A sets of keywords like “Chikungunya”, “Chikungunya Virus”, “Chikungunya
120 Fever”, “Vector-borne”, Arbovirus, “Incidence”, “Prevalence”, “Seroprevalence”,
121 “Seroepidemiology”, “Risk Factors”, “Potential Factors” and” Ethiopia” were used on the
122 search. The search queries were configured using Medical Subject Headings (MeSH) and
123 the “OR and “AND” Boolean operators were used to identified studies with any of the
124 keywords in their titles, abstracts and full texts that might be included on this systematic
125 and meta-analysis review. Moreover, unpublished thesis manuscripts were also
126 accessed from various Ethiopian Universities and research centers.

127 **Eligibility Criteria**

128 Observational studies focused on CHIKV infection or disease conducted in Ethiopia and
129 involving the general population or specific age group were included in this study. Original
130 articles published online in the English language between 2016 and November 2023 were

131 included to ensure the incorporation of updated information on the issue. The eligible
132 studies were those which provided the seroprevalence of Chikungunya in case-control,
133 cross-sectional and cohort studies that reported lab-confirmed cases relied on laboratory
134 tests, encompassing serologic or virological antibodies detection methods such as ELISA
135 IgG, ELISA IgG + IgM and/ or molecular diagnosis. The title and abstracts of articles were
136 initially examined to ascertain whether they provided essential information, including the
137 total sample size and the reported outcome of interest (number of positive samples).
138 Subsequently, the full text was assessed. Duplicates and those that did not contain all
139 relevant information for this systematic review and meta-analysis were removed. Case
140 report studies and reviews were utilized exclusively as reference sources and were not
141 included in the comprehensive analysis of this systematic review. The analysis did not
142 take into account the specificity and sensitivity of the tests.

143

144 **Study Selection and Data Extraction**

145

146 Two experts (ATG and SLA) independently identified articles from the search engines
147 using key terminologies and subsequently screened them based on their titles and
148 abstracts. Selected publications were then imported into Mendeley, and their full texts
149 were retrieved. Eligibility of the full texts was assessed by checking if they addressed the
150 main outcomes of interest. The proportion of the Seropositive of Chikungunya was
151 considered as the main outcome of the study. Data extraction took place independently
152 by two experts (GGD and MZK) from November 1, 2023, to November 21, 2023, and

153 cross-verification was performed by another two experts (HD & BD). If discrepancies
154 arose, the data were re-extracted, even though there were no initial discrepancies.

155 **Quality and Risk-of-Bias Assessment**

156 The quality of the selected articles was evaluated based on PRISMA quality assessment
157 checklist (PRISMA 2020 Checklist) (18), which included items assessing objectives,
158 different components of the methods (e.g., study design, sample size, study population,
159 bias, statistical methods), results, and limitations (S1 Table). This quality assessment was
160 done by two experts (ABB & GGD). In addition, the presence of publication bias or small-
161 study effects was assessed by using Begg's test and Regression-based Egger test, which
162 examines the correlation between the effect size and the standard error of the effect size
163 across studies.

164

165

166

167 **Meta-analysis and Data Analysis**

168

169 The extracted data was entered into an Excel spreadsheet 2019. The seroprevalence of
170 Chikungunya from each study was recorded and the individual study weight, standard
171 error, and 95% confidence interval (CI) were calculated based on the inverse variance
172 method and the binomial equation (19). The logit transformation of proportional
173 prevalence with its variance and standard error was calculated. Subgroup analyses for
174 the primary outcome (seroprevalence of Chikungunya) was done using DerSimonian and
175 Laird model by considering geographical locations, and laboratory techniques employed
176 (PCR or ELISA) (20). An estimate of heterogeneity among and within the studies was
177 calculated from the inverse variance of the random effects model (21). The parameter
178 tau-squared (τ^2), I-squared (I^2) and H-squared (H^2) were calculated to measure the
179 variance of the true effect sizes between-study variance, inter-study heterogeneity, and
180 total variability, respectively (22). Pooled prevalence and standard error with 95%
181 confident interval (CI) were calculated.

182

183 Reports containing seroprevalence data were summarized in a table, organized by
184 reference and study area. This table includes details on study design, study area, sample
185 size, and test type. Descriptive statistics were employed for data summarization, and the
186 findings were illustrated through figures and tables. STATA version 17 software was
187 employed to perform the statistical tasks.

188

189 **RESULTS**

190

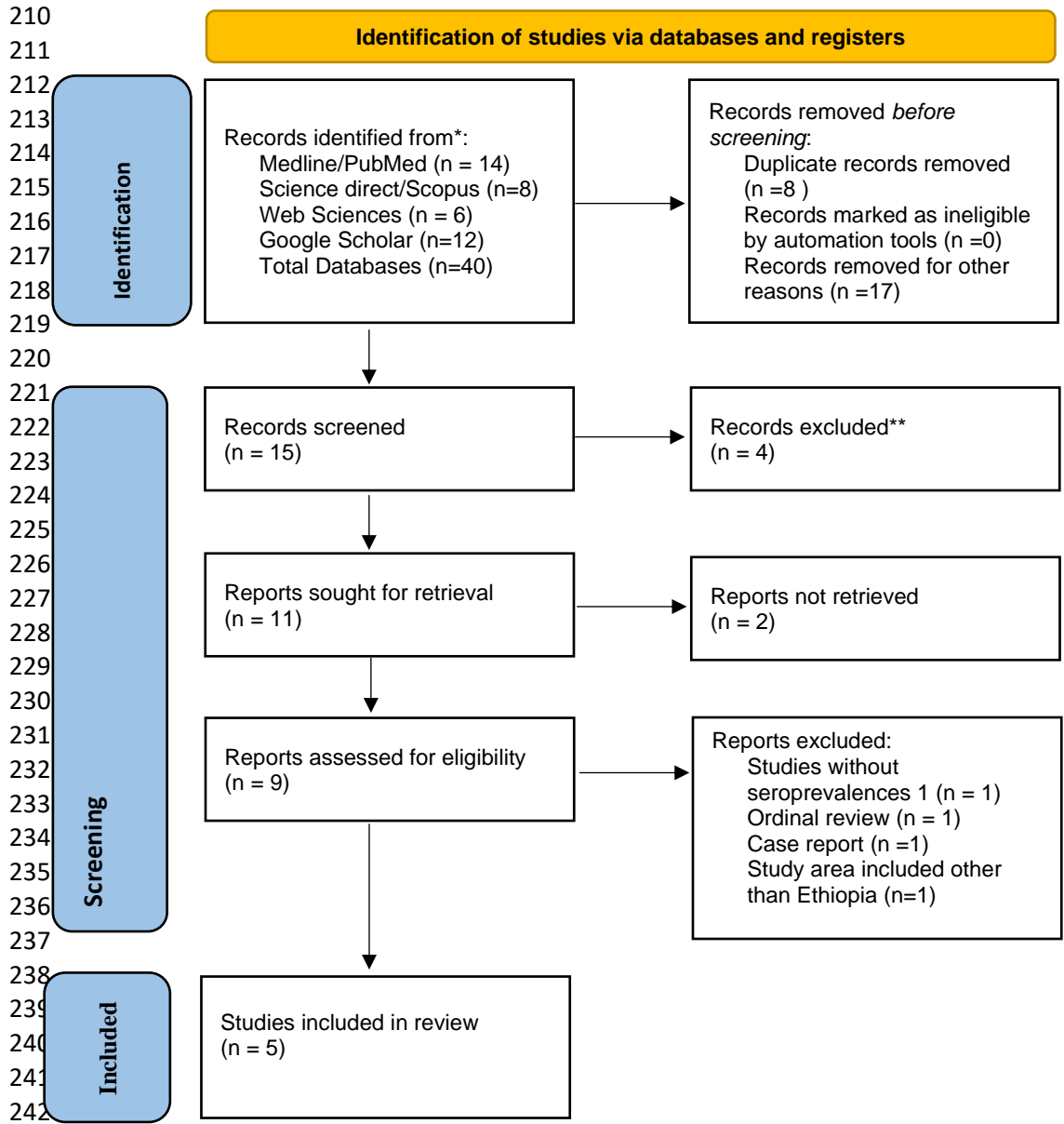
191 **Study Characteristics and Search Results**

192 Figure 1 depicts the complete procedures illustrating how the included articles were
193 selected. A total of 40 articles involving around 335821 subjects published between 2016
194 and 2023 were identified using search engines. Initially, 17 of them were excluded during
195 identification of articles by titles for their lack of relevance to the review. The combination
196 of reference manager software (Mendeley) and manual confirmation was employed to
197 identify and eliminate 8 duplicated papers. Subsequently, 15 articles underwent screening
198 but only 9 articles underwent evaluation according to eligibility criteria. Only five
199 publications met the eligibility criteria and were included in the final systematic review and
200 meta-analysis (Figure 1). The selected articles encompassed research conducted in five
201 regional states: South Nations and Nationalities Region, Amhara, Tigray, Gambella, and
202 South Eastern Ethiopia, as well as one city administration (Dire Dawa) (Figure 2). The
203 included studies comprised cross-sectional (80%, 4/5) and one case-control study (20%,
204 1/5) (Table 1).

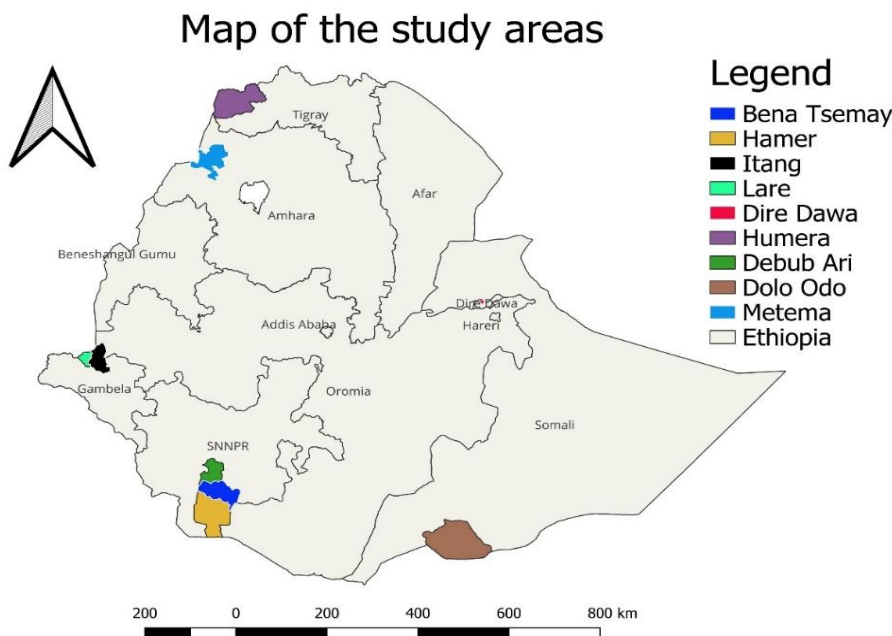
205

206 There were two types of assays used for diagnosis across the studies namely, Enzyme-
207 Linked Immunosorbent Assay (ELISA; 80%, 4/5), and Quantitative reverse transcription
208 polymerase chain reaction (RT-qPCR; 20%,1/5) (Table 1).

209



244 **Figure 1.** Preferred Reporting Items for Systematic Reviews and Meta-Analysis (PRISMA) 2020 flow diagram presents the search strategy and article selection process published between 2016 and 2023, for the current study. Based on the search criteria, a total 40 publications were identified and through the refinement steps outlined in the PRISMA flowchart, the final selection resulted in five full-text articles in the English language that were included in this systematic review.



252
253
254 **Figure 2.** Map of Ethiopia showing Chikungunya virus disease in selected publications
255 between 2016 and 2023 (QGIS version 3.34.1 was used for the map).

256
257

258 **Seroprevalence of Chikungunya**

259 The pooled seroprevalence of Chikungunya in Ethiopia was 12.35% (95%CI: -0.57, 0.81).
260 The highest prevalence was reported in the Southern Nations, Nationalities, and Peoples'
261 Region (SNNPR) at 43.6%, while the lowest seroprevalence was found in Dire Dawa,
262 with approximately 12%. At district level, the highest Chikungunya infection occurred in
263 the Bebub Ari district at 51.58% (SE (logit)=0.15, 95%CI=-0.22, 0.35) while the lowest
264 prevalence was recorded from the Lare district at 6.25% (SE (logit)=0.73, 95%CI=-4.14,
265 -1.28) (Table 1). Look S1 figure 2 for the regions and districts of the study area.

266
267

268 **Table 1:** The seroprevalence of Chikungunya disease in Ethiopia from selected
 269 publications between 2016 and 20120

Authors and study year	Study area		Study design	Sample size	Test type	Sero-prevalences (%)	logit (95% CI)
	Region	District					
Endale et al., 2020	SNNPR	Debub Ari	Cross-sectional	190	ELISA	51.58	0.15 (-0.22, 0.35)
	SNNPR	BenaTsemany		35	ELISA	25.71	0.39 (-1.82, -0.30)
	SNNPR	Hamer		135	ELISA	37.04	0.18 (-0.88, -0.18)
Ferede et al., 2021	Amhara	Metema	Cross-sectional	274	ELISA	30.66	0.13 (-1.07, -0.56)
	Tigray	Humera		312	ELISA	16.35	0.15 (-1.93, -1.33)
Asebe et al., 2021	Gambella	Itang	Cross-sectional	58	ELISA	20.69	0.32 (-1.98, -0.71)
	Gambella	Lare		32	ELISA	6.25	0.73 (-4.14, -1.28)
Takele, 2020	South-Eastern Ethiopia	Dolo ado	Case-control	99	RT-qPCR	14.14	0.29 (-2.37, -1.24)
Geleta et al., 2019	Dire Dawa	Dire Dawa	Cross-sectional	33468 6	RT-qPCR	12.30	0.01 (-1.97, -1.95)

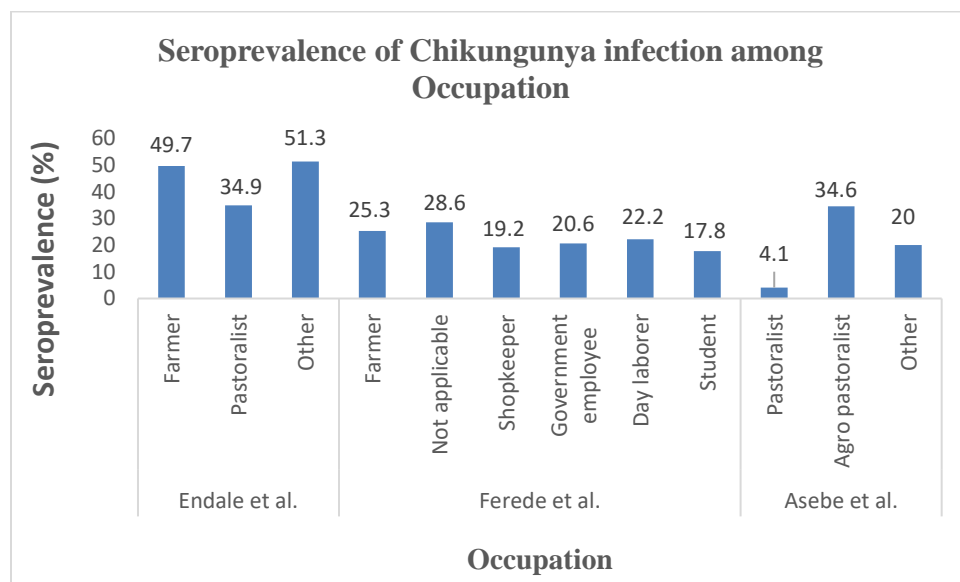
270

271 CI = Confidence Interval

272 Risk Factors Associated with Chikungunya Infection

273
274 Risk factors, include occupation, education, sex, and age were identified in four of the
275 included articles. The Chikungunya prevalence exhibited variation based on these
276 factors. Notably, the prevalence of Chikungunya was significantly varied with occupation,
277 irrespective of geographical location. According to Endale et al. (2020), farmers showed
278 the highest seroprevalence of Chikungunya at 49.7%, compared to pastoralists at 34.9%.
279 Similar findings were reported in northwest Ethiopia by Ferede et al. in 2021. Additionally,
280 Asebe et al. (2021) reported that pastoralists had the lowest Chikungunya infection rate
281 at 4.1% (see Figure 5).

282

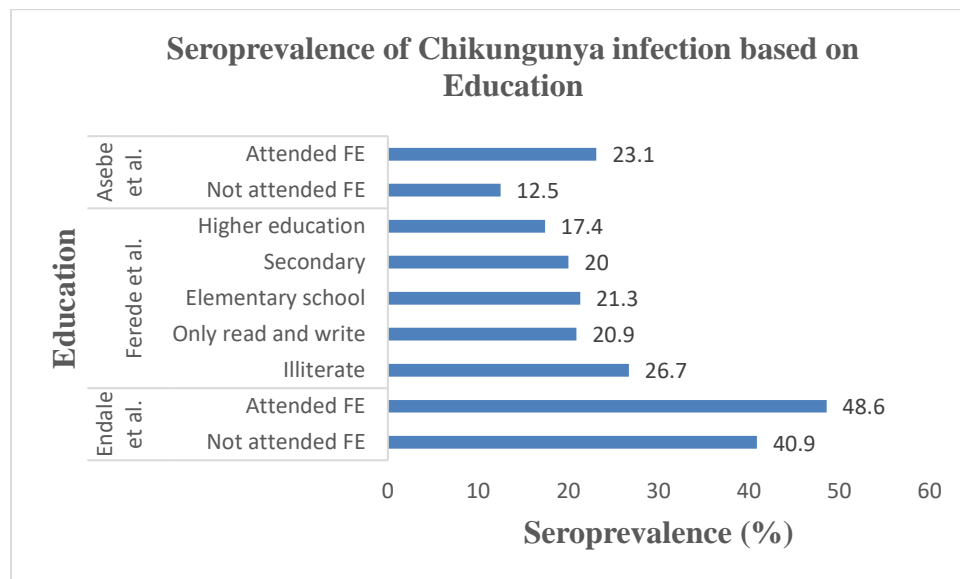


283
284
285
286 **Figure 5.** Distribution of Chikungunya disease among farmers, pastoralists, agro-
287 pastoralists, and individuals in other occupations in selected publications from 2016 to
288 2023.

289
290

291 Figure 6 displays the prevalence of Chikungunya across different educational
292 backgrounds. Chikungunya prevalence was higher among individuals who had received
293 formal education compared to those who had not attended formal education or were
294 illiterate (see Figure 6).

295



296 **Figure 6.** Distribution of Chikungunya disease in people's educational status: attended
297 formal education (FE), Not attended FE, higher education, secondary, elementary school,
298 only read and write, and illiterate in selected publications between 2016 and 2023.

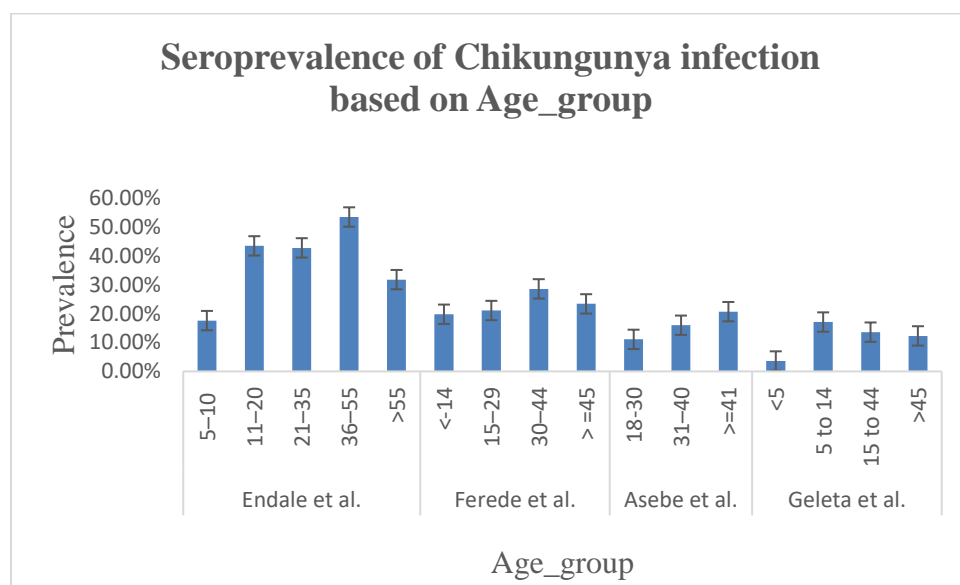
300

301

302 The seroprevalence of Chikungunya was higher in the adult age group, while the lowest
303 prevalence was recorded in children. Endale et al. (2020) reported that the highest
304 Chikungunya prevalence in the age group of 36-55 years at 53.5% and the lowest was
305 approximately 17.7% in the age group of 5-10 years. Similar results were reported by
306 Ferede et al. (2021). However, Geleta et al. (2019) reported a higher Chikungunya
307 infection rate in the age group of 5-14 years at 17.1%, with the lowest prevalence in the
308 age group of ≤ 5 years at 3.6% (see Figure 7).

309

310



311

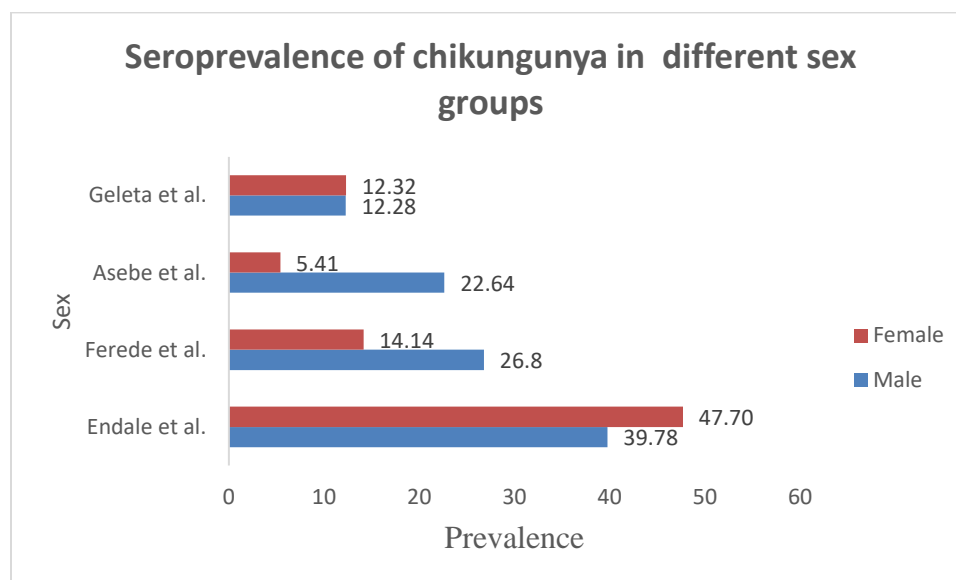
312

313 **Figure 7.** Distribution of Chikungunya disease in different age group of the participants
314 in selected publications from 2016 to 2023.

315

316

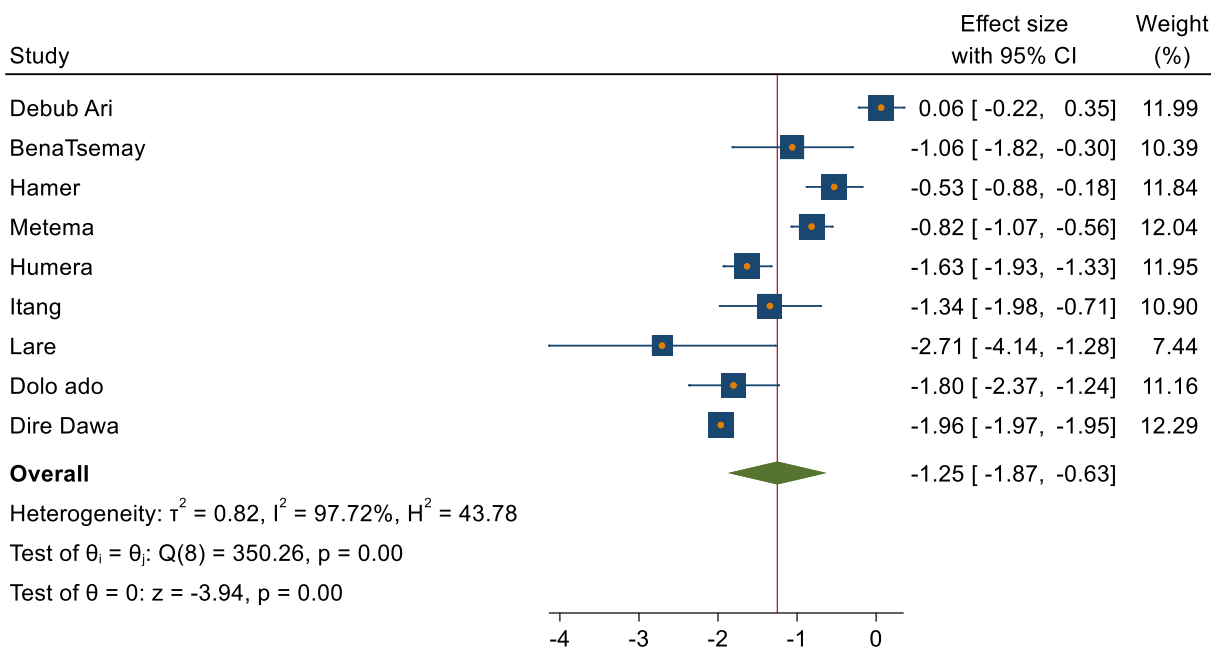
317 Figure 8 showed the prevalence of Chikungunya in males and females. It is notable that
318 the seroprevalence of Chikungunya across different sex groups was not consistent.
319 Asebe et al. (2021) reported a higher Chikungunya infection rate in males at 22.64%,
320 compared to females at 5.41%. Similarly, Ferede et al. (2021) found a higher prevalence
321 in males, with 26.8%, compared to 14.14% in females. However, Endale et al. (2020)
322 reported a higher prevalence among females at 47.7% compared to males at 39.78%.
323 While approximate seroprevalence of Chikungunya in both sexes was reported by Geleta
324 et al. (2019) (see Figure 8).



325
326
327 **Figure 8.** The prevalence of Chikungunya disease in Ethiopia in males and females in
328 selected publications between 2016 and 2023.
329
330

331 **Meta-analysis**

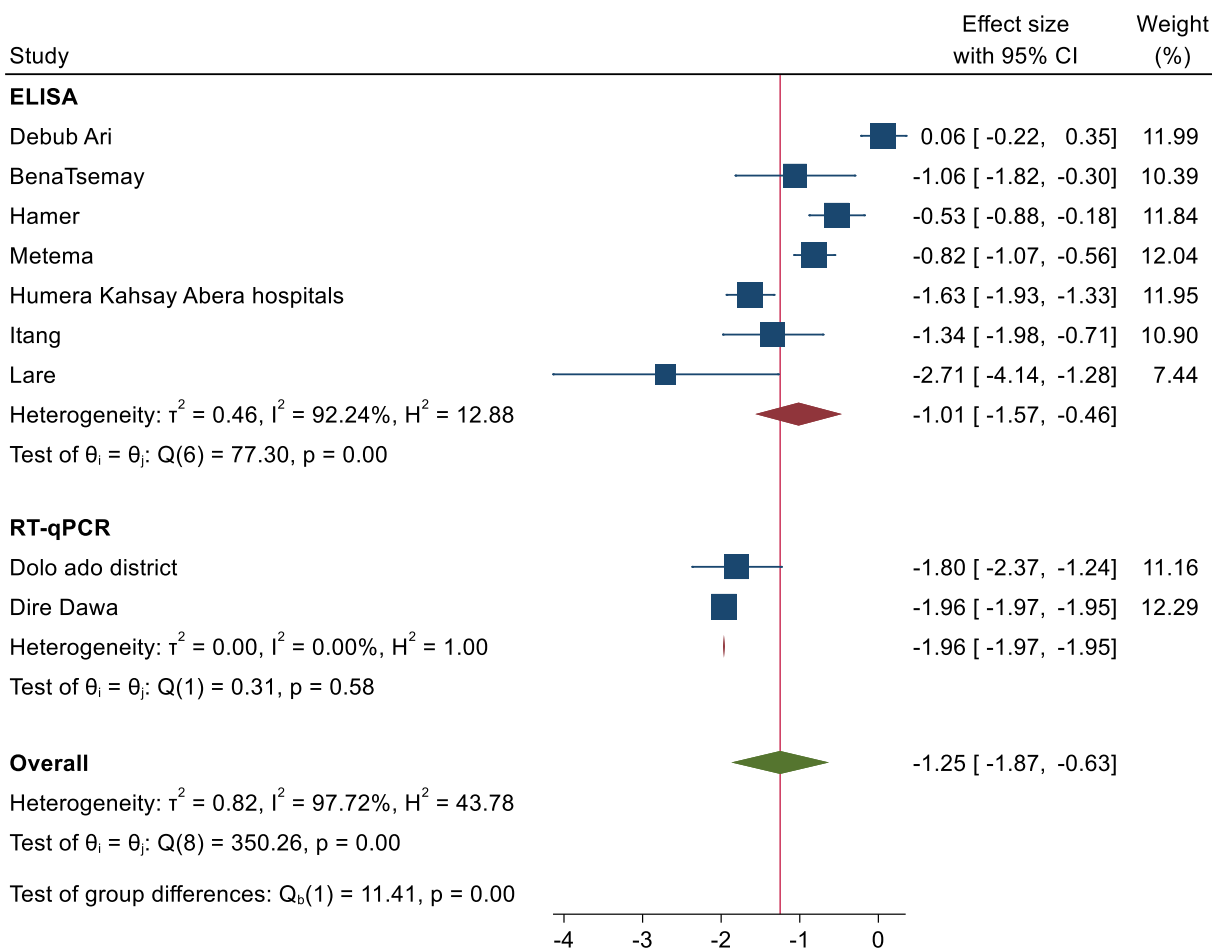
332 A forest plot generated by the DerSimonian–Laird model using a Random Effects
 333 approach at the district level resulted in negative effect size. Districts such as Dire Dawa
 334 and Metema exhibited considerable negative effect size but had higher weight (Effect size
 335 (ES)=-1.96, 95%CI -1.97, -1.95, weight (W)=12.29%) and (ES=-0.82, 95%CI=-1.07, -
 336 0.56, W=12.04), respectively. While Lare and Bena Tsemay had considerable negative
 337 effect size but contributed the lowest (-2.71, 95%CI -4.14, -1.28, W=7.44%), and (ES=-
 338 1.06, 95%CI=-1.82, -0.30, W=10.39%), respectively. Debub Ari had positive effect size of
 339 0.06 (95%CI=-0.22,0.35, W=11.99%). The overall random effect estimates indicate a
 340 significant negative effect size of -1.25 (95% CI= -1.87, -0.63), indicated an overall lower
 341 seroprevalence of Chikungunya across the districts (Figure 3). There was statically
 342 significant variability among the districts ($\tau^2=0.82$, $I^2= 97.72\%$, $H^2 = 43.78$, $p=0.00$).



343 Random-effects DerSimonian–Laird model

344 **Figure 3.** The random effect estimates of the effect size in different districts of Ethiopia.
 345
 346
 347

348
 349 The subgroup analysis based on the type of tests conducted revealed variations in the
 350 study outcomes. The test Enzyme-Linked Immunosorbent Assay (ELISA) was showed
 351 the variability among the studies and the heterogeneity was statically significant ($I^2 =$
 352 92.24% , $p=0.00$). Whereas the test Reverse Transcription quantitative Polymerase Chain
 353 Reaction (RT_qPCR) revealed lack of variability among the studies ($I^2 = 0.00\%$, $p= 0.58$).
 354 The pooled effects size estimate -1.25 ($-1.87, -0.63$) indicated that there was a
 355 heterogeneity between ELISA and RT-qPCR tests with $I^2 = 97.72\%$ ($p = 0.00$) (see Figure
 356 4).



357 Random-effects DerSimonian-Laird model

358
 359 Figure 4. The random effect estimates of the effect size across the type of test performed.

360 **Quality assessment**

361

362 The statistical tests for small-study effects in a meta-analysis resulted in non-significant
363 results. The Begg's test showed the absence of significant small-study effects (Kendall's
364 Score = -8.00, SE of Score=9.592, z-value=-0.94, P=0.47). similarly, the regression-
365 based Egger test detected funnel plot asymmetry and revealed no indication of
366 publication bias or small-study effects in the meta-analysis (beta1= -1.74, SE of beta1=
367 1.766, z-value= -0.99, p=0.32). Look S1 Figure, Galbraith plot also showed the absence
368 of small-study effect.

369

370 **DISCUSSION**

371
372 Five studies on Chikungunya conducted in Ethiopia and published in English between
373 2016 and 2023 were deemed eligible and included in this systematic review and meta-
374 analysis. The meta-analysis resulted in a pooled seroprevalence of Chikungunya at
375 12.35%. Factors such as geographical location, occupation, age, sex, and education
376 contributed to the variation in Chikungunya seroprevalence. Subgroup analysis based on
377 the study area and the type of tests performed revealed significant heterogeneity.

378 The pooled prevalence of Chikungunya highlights the significance of the disease in
379 Ethiopia. This prevalence was relatively lower than reports from neighboring countries.
380 For instance, Sudan showed a seroprevalence among general populations of median
381 12%, with a range of 0-43% (8), while Kenya exhibited prevalence rates ranging from
382 0.97% to 42% (11). This disparity prompts an exploration of potential contributing factors.
383 Geographical nuances, including climate and ecosystems, may impact the abundance
384 and behavior of the Aedes mosquitoes, which are the vectors responsible for CHIKV
385 transmission (17). Furthermore, variations in sanitation and hygiene practices, as well as
386 the effectiveness of vector control measures, could influence the prevalence of
387 Chikungunya. Another aspect to consider is the diagnostic capacity; differences in the
388 accuracy and sensitivity of disease detection methods could lead to variations in reported
389 prevalence.

390 In this systematic review and meta-analysis, the highest seroprevalence of Chikungunya
391 was reported in the Debub Ari district of SNNPR, while the smallest was recorded in the
392 Lare district of the Gambella regional state. In addition, seroprevalences differed among
393 districts within the same region. For instance, the prevalence of Chikungunya in Itang

394 (Gambella) was approximately triple that of Lare (Gambella). This result is in line with
395 previous studies that revealed the geographical region contributed to the inconsistency in
396 Chikungunya prevalence (23). This is likely due to the extensive distribution and high
397 population density of vectors, particularly in urban centers which are factors that favored
398 their occurrence. The prevalence was higher in the town, especially in internally displaced
399 populations sites, where various water containers such as tyres, clay pots, barrels, plastic
400 water tanks, flower vases, and old cars are widely present as potential breeding grounds
401 for *Aedes* mosquitoes (24). Additionally, the remoteness of certain areas may also play a
402 role, as there are inequalities in the distribution of health facilities. These findings
403 underscore the importance of considering the geographical context when implementing
404 control and prevention strategies.

405 The current systematic review and meta-analysis demonstrated considerable variability
406 in seroprevalence of Chikungunya among occupations in Ethiopia. The highest
407 seroprevalence of Chikungunya was found among farmers compared to individuals in
408 other occupations (Endale et al., 2020). This finding is consistent with a study conducted
409 in northwest Ethiopia by Ferede et al. (2021) (see Figure7). The variation may be
410 associated with the degree of exposure to vectors transmitting CHIKV. Seropositivity for
411 Chikungunya is higher in individuals who regularly move in forests, engage in agricultural
412 activities, and have documented incidents of mosquito bites (25). The fact that
413 arboviruses typically circulate in forested areas through a sylvatic cycle, involving
414 primates as reservoir hosts (25). The study by Thiberville et al. (2013), who reported that
415 most seropositive individuals were engaged in farming activities, supports the higher
416 prevalence of Chikungunya among farmers.

417 The prevalence of CHIKV in the reports included in this systematic review and meta-
418 analysis was higher in 31–40 years of age-group. Similar findings were reported from
419 Tanzania (26). The higher infection rate in this age group may suggest that people in
420 those age groups are active workers and exposed to the bites of the vector that transmit
421 the diseases. However, one study by Geleta et al. (2019) reported a higher Chikungunya
422 prevalence in the age group of 5-14 years and with the lowest prevalence in the age group
423 of ≤ 5 years. This difference may probably be a result of the sample size difference that is
424 the number of people aged 5-14 years who underwent diagnosis was almost doubled that
425 of the people with ≥ 30 years.

426 In this systematic review and meta-analysis, Education was associated with
427 seroprevalence of Chikungunya in Ethiopia. People who were attended formal education
428 were highly affected than those did not attended formal education. This may be
429 associated with educated people living in the city or town where favorable environment
430 for the vectors are found such as containers with water. Educated people might have
431 frequent migration history compared to non-educated people (6,25). Moreover, higher
432 prevalences in educated individuals might be associated with better access to healthcare
433 facilities as they are living in the city where better health infrastructures are present,
434 leading to increased detection and reporting of Chikungunya cases.

435 The results between studies were inconsistent with gender. The prevalence of
436 Chikungunya in males was higher compared to females according to Asebe et al. (2021)
437 and Ferede et al. (2021) (Figure 8). These findings are in line with other studies that
438 revealed that men are more susceptible than women (27,28). This may affirm the
439 argument that males face a higher likelihood of encountering mosquito bites in the course

440 of agricultural work or other comparable travel and occupational activities. In contrast,
441 Endale et al. (2020) reported that females were more CHIKV IgG+ compared to males
442 indicated that females were more susceptible than males. This opposite trend is
443 supported by other seroprevalence studies (29,30), where females were more susceptible
444 than males. These conflicting reports highlight the necessity for further exploration of the
445 associations between arbovirus infection and gender.

446 The results of subgroup analysis based on districts and test types were inconsistent
447 across studies. The subgroup analysis, categorized by the type of tests conducted,
448 unveiled differences in study outcomes. Districts employing ELISA demonstrated
449 significant variability among the studies compared to districts that utilized RT-qPCR which
450 exhibited lack of variability among the studies, though not statistical significance. The
451 overall heterogeneity was found to be high. These findings underscore the importance of
452 accounting for the type of test in the analysis, as it appears to be a significant factor
453 contributing to the observed heterogeneity. Further exploration into the sources of
454 variability and careful consideration of the clinical implications are essential for a
455 comprehensive interpretation of these results.

456 **Study Strength and Limitations**

457
458 The strengths of this systematic review and meta-analysis are that the study included
459 published data since the first detection of Chikungunya, and it is the first to report the
460 pooled seroprevalence of Chikungunya in Ethiopia.

461

462 However, the study has several limitations. The number of included studies is limited due
463 to a restricted pool of available research, and the pooled prevalence may not accurately
464 reflect the current reported rates. Almost all the included studies were cross-sectional. No
465 molecular studies were carried out at the country level, except for RT-qPCR tests for
466 confirmation. This limitation makes it challenging to predict the circulating strains of
467 Chikungunya virus.

468 **Conclusions and Recommendations**

469 The pooled prevalence of Chikungunya reveals that emerging and re-emerging diseases
470 remain persistent public health concerns in Ethiopia, a country with limited resources and
471 health infrastructure. Discrepancies in study results may be attributed to variations in
472 sample size, the type of test performed, location, education, gender, and age.
473 Additionally, the participating communities may exhibit diverse habits, behaviors,
474 occupations, traditions, and local practices that could either increase or decrease their
475 likelihood of exposure to the virus.

476 These findings underscore the importance of considering different factors and types of
477 tests used for virus detection. Recognizing the significance of proactive operational
478 readiness in mitigating the outbreak and spread of infectious diseases is recommended.
479 Furthermore, it is crucial for the Ministry of Health and other concerned bodies to
480 emphasize collaboration and public awareness campaigns to better respond to similar
481 outbreaks.

482

483

484

485 **Author contributions**

486 **DGG**: conceptualization, formulation of the data accusation methods, analyzed the data,
487 prepared the draft manuscript, review and editing. **ATG**: collect data from published
488 literatures, review and editing. **MZK**: collect data from published literatures, review and
489 editing. **ABB**: collect data from published literatures, review and editing. **HD**: collect
490 data from published literatures, review and editing. **BD**: collect data from published
491 literatures, review and editing. **SLA**: collect data from published literatures, analyzed the
492 data, review and editing.

493

494 **Acknowledgements**

495 Not applicable.

496

497 **Funding**

498 There is no funding for this work.

499

500 **Data availability**

501 All data generated or analyzed during this study are included in this document.

502

503 **Ethics approval and consent to participate**

504 Not applicable.

505

506 **REFERENCES**

- 507
- 508 1. Erin Staples J, Breiman RF, Powers AM. Chikungunya fever: An epidemiological
509 review of a re-emerging infectious disease. Vol. 49, *Clinical Infectious Diseases*.
510 2009.
- 511 2. WHO. Chikungunya: [https://www.who.int/news-room/questions-and-](https://www.who.int/news-room/questions-and-answers/item/chikungunya)
512 [answers/item/chikungunya](https://www.who.int/news-room/questions-and-answers/item/chikungunya). Accessed 23 November 2023.
- 513 3. Wahid B, Ali A, Rafique S, Idrees M. Global expansion of chikungunya virus:
514 mapping the 64-year history. Vol. 58, *International Journal of Infectious Diseases*.
515 2017.
- 516 4. Kuno G. A Re-Examination of the History of Etiologic Confusion between Dengue
517 and Chikungunya. Vol. 9, *PLoS Neglected Tropical Diseases*. 2015.
- 518 5. WHO. Chikungunya fact sheet: [https://www.who.int/news-room/fact-](https://www.who.int/news-room/fact-sheets/detail/chikungunya)
519 [sheets/detail/chikungunya](https://www.who.int/news-room/fact-sheets/detail/chikungunya). Accessed 7 November 2023.
- 520 6. Thiberville SD, Moyon N, Dupuis-Maguiraga L, Nougairede A, Gould EA, Roques
521 P, et al. Chikungunya fever: Epidemiology, clinical syndrome, pathogenesis and
522 therapy. Vol. 99, *Antiviral Research*. 2013.
- 523 7. Nakkhara P, Chongsuvivatwong V, Thammapalo S. Risk factors for symptomatic
524 and asymptomatic chikungunya infection. *Trans R Soc Trop Med Hyg*.
525 2013;107(12).
- 526 8. Humphrey JM, Cleton NB, Reusken CBEM, Glesby MJ, Koopmans MPG, Abu-
527 Raddad LJ. Urban Chikungunya in the Middle East and North Africa: A systematic
528 review. *PLoS Negl Trop Dis*. 2017;11(6).
- 529 9. WHO for Africa. Weekly Bulletin on outbreaks and other emergencies . Accessed
530 9 November 2023. 2019;
- 531 10. Mengesha Tsegaye M, Tayachew A, Belay D, Alemu A, Beyene B. A35 The first
532 laboratory confirmation of chikungunya outbreak in Ethiopia. *Virus Evol*.
533 2019;5(Supplement_1).
- 534 11. Konongoi SL, Nyunja A, Ofula V, Owaka S, Koka H, Koskei E, et al. Human and
535 entomologic investigations of chikungunya outbreak in Mandera, Northeastern
536 Kenya, 2016. *PLoS One*. 2018;13(10).

- 537 12. Alayu M, Teshome T, Amare H, Kinde S, Belay D, Assefa Z. Risk factors for
538 Chikungunya Outbreak in Kebridhar City, Somali Ethiopia, 2019. Unmatched case-
539 control study. *bioRxiv*. 2020.
- 540 13. Geleta D, Tesfaye N, Ayigegn H. Epidemiological Description of Chikungunya Virus
541 Outbreak in Dire Dawa Administrative City, Western Ethiopia, 2019. *International*
542 *Journal of Clinical and Experimental Medical Sciences*. 2020;6(3).
- 543 14. Mourad O, Makhani L, Chen LH. Chikungunya: An Emerging Public Health
544 Concern. Vol. 24, *Current Infectious Disease Reports*. 2022.
- 545 15. Alayu M, Teshome T, Amare H, Kinde S, Belay D, Assefa Z. Risk Factors for
546 Chikungunya Virus Outbreak in Somali Region of Ethiopia, 2019: Unmatched Case-
547 Control Study. *Adv Virol*. 2021;2021.
- 548 16. Lanyero B, Edea ZA, Musa EO, Watore SH, Mandalia ML, Livinus MC, et al.
549 Readiness and early response to COVID-19: Achievements, challenges and
550 lessons learnt in Ethiopia. *BMJ Glob Health*. 2021;6(6).
- 551 17. Waldetensai A, Gemechu F, Kinfte E, Amare H, Hagos S, Teshome D, et al. *Aedes*
552 mosquito responses to control interventions against the Chikungunya outbreak of
553 Dire Dawa, Eastern Ethiopia. *Int J Trop Insect Sci*. 2021;41(4).
- 554 18. Page MJ, McKenzie JE, Bossuyt PM, Boutron I, Hoffmann TC, Mulrow CD, et al.
555 The PRISMA 2020 statement: An updated guideline for reporting systematic
556 reviews. Vol. 372, *The BMJ*. 2021.
- 557 19. Barendregt JJ, Doi SA, Lee YY, Norman RE, Vos T. Meta-analysis of prevalence.
558 *J Epidemiol Community Health* (1978). 2013;67(11).
- 559 20. DerSimonian R, Laird N. Meta-analysis in clinical trials. *Control Clin Trials*.
560 1986;7(3).
- 561 21. Higgins JPT, Thompson SG. Quantifying heterogeneity in a meta-analysis. *Stat*
562 *Med*. 2002;21(11).
- 563 22. Borenstein M, Hedges L V., Higgins JPT, Rothstein HR. Introduction to meta-
564 analysis. *Introduction to Meta-Analysis*. 2009.
- 565 23. Skalinski LM, Santos AES, Paixão E, Itaparica M, Barreto F, da Conceição
566 Nascimento Costa M, et al. Chikungunya seroprevalence in population-based
567 studies: a systematic review and meta-analysis. Vol. 81, *Archives of Public Health*.
568 2023.

- 569 24. Hamid H, Musa H, Ahmed A, Abdul Azeez T, Adam A, Abdel Malik M, et al.
570 Stegomyia indices of Aedes aquatic stages in El Geneina town, Western Sudan.
571 Eastern Mediterranean Health Journal. 2021;27(12).
- 572 25. Thiberville SD, Moyon N, Dupuis-Maguiraga L, Nougairede A, Gould EA, Roques
573 P, et al. Chikungunya fever: Epidemiology, clinical syndrome, pathogenesis and
574 therapy. Vol. 99, Antiviral Research. 2013.
- 575 26. Kajeguka DC, Kaaya RD, Mwakalinga S, Ndossi R, Ndaro A, Chilongola JO, et al.
576 Prevalence of dengue and chikungunya virus infections in north-eastern Tanzania:
577 A cross sectional study among participants presenting with malaria-like symptoms.
578 BMC Infect Dis. 2016;16(1).
- 579 27. Sissoko D, Moendandze A, Malvy D, Giry C, Ezzedine K, Solet JL, et al.
580 Seroprevalence and risk factors of Chikungunya virus infection in Mayotte, Indian
581 Ocean, 2005-2006: A population- based survey. PLoS One. 2008;3(8).
- 582 28. Azami NAM, Salleh SA, Shah SA, Neoh H min, Othman Z, Zakaria SZS, et al.
583 Emergence of chikungunya seropositivity in healthy Malaysian adults residing in
584 outbreak-free locations: Chikungunya seroprevalence results from the Malaysian
585 Cohort. BMC Infect Dis. 2013;13(1).
- 586 29. Mohanty I, Dash M, Sahu S, Narasimham M, Panda P, Padhi S. Seroprevalence of
587 chikungunya in southern Odisha. J Family Med Prim Care. 2013;2(1).
- 588 30. Kawle AP, Nayak AR, Bhullar SS, Borkar SR, Patankar SD, Dagainawala HF, et al.
589 Seroprevalence and clinical manifestations of chikungunya virus infection in rural
590 areas of Chandrapur, Maharashtra, India. J Vector Borne Dis. 2017;54(1).

591

592

593