

1 **Title: First-in-human trial evaluating safety and pharmacokinetics of AT-752, a novel**
2 **nucleotide prodrug with pan-serotype activity against dengue virus**

3

4 Authors:

5 Xiao-Jian Zhou,^{a,#} Jason Lickliter,^b Maureen Montrond,^a Laura Ishak,^a Keith Pietropaolo,^a

6 Dayle James,^a Bruce Belanger,^a Arantxa Horga,^a Janet Hammond^a

7

8 Affiliations:

9 ^aAtea Pharmaceuticals, Inc, Boston, Massachusetts, USA

10 ^bNucleus Network, Melbourne, Australia

11

12 Running Head: First-in-human, dose-escalation study of AT-752 [54 characters and spaces]

13

14 [#]Address correspondence to Xiao-Jian Zhou, zhou.xj@ateapharma.com

15 **ABSTRACT**

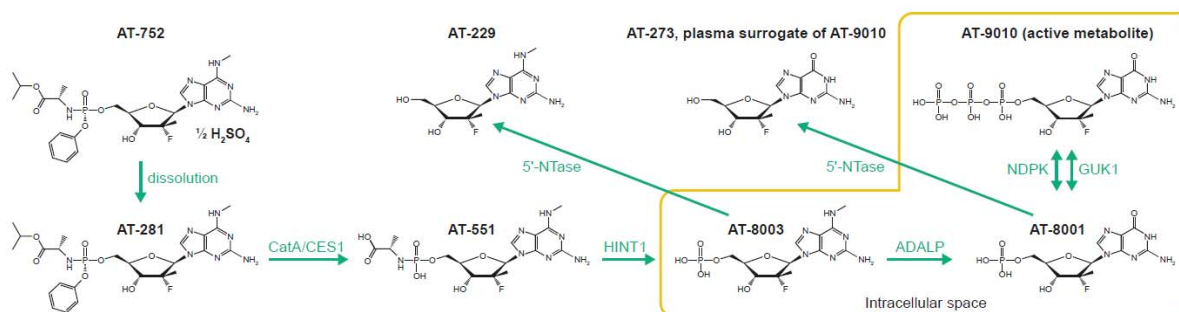
16 AT-752 is a novel guanosine nucleotide prodrug inhibitor of the dengue virus (DENV)
17 polymerase with sub-micromolar, pan-serotype antiviral activity. This Phase 1, double-blind,
18 placebo-controlled, first-in-human study evaluated the safety, tolerability, and
19 pharmacokinetics of ascending single and multiple oral doses of AT-752 in healthy subjects.
20 AT-752 was well tolerated when administered as a single dose up to 1500 mg, or when
21 administered as multiple doses up to 750 mg three times daily (TID). No serious adverse
22 events occurred, and the majority of treatment-emergent adverse events were mild in
23 severity and resolved by the end of the study. In those receiving single ascending doses of
24 AT-752, no pharmacokinetic ethnic sensitivity was observed in Asian subjects and no food
25 effect was observed. Plasma exposure of the guanosine nucleoside metabolite AT-273, the
26 surrogate of the active triphosphate metabolite of the drug, increased with increasing dose
27 levels of AT-752 and exhibited a long half-life of approximately 15–25 h. Administration of
28 AT-752 750 mg TID led to a rapid increase in plasma levels of AT-273 exceeding the target *in*
29 *vitro* 90% effective concentration (EC₉₀) of 0.64 μM in inhibiting DENV replication, and
30 maintained this level over the treatment period. The favorable safety and pharmacokinetic
31 results support evaluation of AT-752 as an antiviral for the treatment of dengue in future
32 clinical studies.

33 INTRODUCTION

34 Dengue is a mosquito-borne illness caused by four serotypes of dengue virus (DENV1–4) (1).
35 DENV belongs to the Flaviviridae family and is a single-stranded positive-sense RNA virus (1).
36 Dengue virus-associated diseases are major causes of illness and death in the tropical and
37 subtropical world, with an estimated 100–400 million people infected yearly
38 (<https://www.who.int/news-room/fact-sheets/detail/dengue-and-severe-dengue>). The
39 incidence of dengue has increased 30-fold globally over the past 50 years, with several
40 recent outbreaks contributing to a sharp increase in the Americas of over 3 million new
41 infections recorded in 2023 (2, 3) (<https://www.paho.org/en/news/3-8-2023-dengue-cases-increase-globally-vector-control-community-engagement-key-prevent-spread>). Despite its
42 high prevalence, there are no direct-acting antivirals for dengue, and treatment options are
43 primarily centered around supportive care (4-6). There are currently two licensed dengue
44 vaccines available in certain countries: CYD-TDV (chimeric yellow fever-dengue-tetravalent
45 dengue vaccine; Dengvaxia) is licensed in 20 countries and indicated for use in individuals
46 aged 9–45 years depending on country, whereas TAK-003 (Qdenga) is available for children
47 and adults in Europe, Indonesia, Thailand, and Brazil (7-9)
48 (<https://www.takeda.com/newsroom/newsreleases/2023/Takeda-Dengue-Vaccine-Recommended-by-World-Health-Organization-Advisory-Group-for-Introduction-in-High-Dengue-Burden-and-Transmission-Areas-in-Children-Ages-Six-to-16-Years/>). Critically,
49 however, both vaccines offer imbalanced protection across serotypes, and data indicate low
50 efficacy in younger children (7, 9, 10). Consequently, there are several vaccines and
51 antivirals in development, including repurposed drugs (5-7). To date, clinical trials of
52 repurposed drugs with antiviral activity such as balapiravir, chloroquine, lovastatin, and
53 celgosivir have not demonstrated significant efficacy in reducing viremia and/or improving

57 clinical outcomes (11-14). Thus, there remains an unmet need for an effective direct-acting
58 antiviral for the treatment of dengue, especially considering that a higher viral burden has
59 been linked to severe dengue disease (6, 15).
60 AT-752 is an orally available novel guanosine nucleotide prodrug inhibitor of the DENV
61 polymerase with sub-micromolar, pan-serotype antiviral activity (16). AT-752 is the
62 hemisulfate salt of AT-281, a dual guanosine nucleotide prodrug which undergoes multistep
63 metabolic activation to the active 5' triphosphate metabolite AT-9010, which selectively
64 inhibits the viral RNA-dependent RNA polymerase (16, 17) (**Figure 1**). Dephosphorylation of
65 AT-9010 results in the formation of the guanosine nucleoside metabolite AT-273, which is
66 regarded as a surrogate plasma marker for intracellular concentrations of AT-9010 (18).

67 **Figure 1. Metabolic pathway of AT-752**



68
69 5'-Ntase, 5'-nucleotidase; ADALP, adenosine deaminase-like protein; CatA, cathepsin A; CES1, carboxylesterase 1; GUK1,
70 guanylate kinase; HINT1, histidine triad nucleotide binding protein 1; NDPK, nucleoside-diphosphate kinase.
71 AT-752 is a potent inhibitor of DENV2 and DENV3, as well as other flaviviruses, *in vitro*, and
72 demonstrated *in vivo* activity against DENV2 in a mouse model of disease (16). Based on
73 initial pre-clinical toxicology studies of AT-752 in rats and monkeys, the no observed adverse
74 effect level after 14 days of dosing was determined as 1000 mg/kg/day of AT-752 (expressed
75 as AT-281 free base), providing at least 40-fold of margin of safety for the starting dose of
76 250 mg in humans (Data on file, Atea Pharmaceuticals, Inc).

77 This first-in-human Phase 1 study was designed to evaluate the safety, tolerability, and
78 pharmacokinetics (PK) of oral single ascending doses (SAD) and multiple ascending doses
79 (MAD) of AT-752 (free base AT-281 and metabolites AT-551, AT-229, and AT-273) in healthy
80 male and female subjects. Additionally, the effect of food on the PK of single oral doses of
81 AT-752, and PK ethnic sensitivity of AT-752 were assessed.

82

83 **RESULTS**

84 **Study enrollment and completion**

85 A total of 65 subjects were enrolled into one of six SAD or three MAD cohorts (see Materials
86 and Methods). Among the SAD cohorts, 41 subjects were enrolled, and 40 subjects (97.6%)
87 completed the trial. One subject (2.4%) randomized to receive AT-752 discontinued due to
88 withdrawal of consent after receiving AT-752 500 mg (Cohort B), and was replaced. All 41
89 subjects were included in the safety population, and 31 subjects (75.6%) who received at
90 least one dose of AT-752 were included in the PK population. Among the MAD cohorts, 24
91 subjects were enrolled and all completed the trial. All 24 subjects were included in the
92 safety population, and 18 subjects (75.0%) who received at least one dose of AT-752 were
93 included in the PK population.

94 **Patient demographics and baseline characteristics**

95 Demographics and baseline characteristics in the SAD cohorts were generally similar across
96 cohorts and treatments (**Table 1**). The proportion of male (51.2%) and female (48.8%)
97 subjects in the SAD cohorts were similar, whereas the majority were male (62.5%) in the

98 **Table 1. Baseline characteristics of study subjects**

Variable	SAD cohorts							MAD cohorts				
	Cohort A AT-752 250 mg n=6	Cohort B AT-752 500 mg n=7	Cohort C AT-752 1000 mg n=6	Cohort D AT-752 1000 mg ethnic n=6	Cohort E AT-752 1500 mg n=6	Placebo n=10	Total N=41	Cohort F AT-752 1000 mg QD × 7 days n=6	Cohort G AT-752 750 mg BID × 4.5 days n=6	Cohort H AT-752 750 mg TID × 4.3 days n=6	Placebo n=6	Total N=24
Mean age, years (range)	28.2 (19–44)	31.1 (16–64)	28.5 (25–35)	28.3 (21–43)	30.8 (21–59)	25.9 (20–39)	28.6 (19–64)	26.5 (20–33)	38.5 (20–58)	39.2 (21–62)	37.2 (18–60)	35.3 (18–62)
Sex, n (%)												
Male	3 (50.0)	4 (57.1)	2 (33.3)	3 (50.0)	3 (50.0)	6 (60.0)	21 (51.2)	6 (100.0)	3 (50.0)	4 (66.7)	2 (33.3)	15 (62.5)
Female	3 (50.0)	3 (42.9)	4 (66.7)	3 (50.0)	3 (50.0)	4 (40.0)	20 (48.8)	0	3 (50.0)	2 (33.3)	4 (66.7)	9 (37.5)
Race, n (%)												
Asian	3 (50.0)	3 (42.9)	2 (33.3)	5 (83.3)	3 (50.0)	4 (40.0)	20 (48.8)	0	0	2 (33.3)	0	2 (8.3)
White	3 (50.0)	4 (57.1)	4 (66.7)	0	3 (50.0)	5 (50.0)	19 (46.3)	5 (83.3)	6 (100.0)	4 (66.7)	6 (100.0)	21 (87.5)
Other	0	0	0	1 (16.7)	0	1 (10.0)	2 (4.9)	1 (16.7)	0	0	0	1 (4.2)
Mean height, cm (range)	169.8 (159–186)	170.4 (162–178)	167.7 (159–181)	160.3 (143–172)	175.2 (163–186)	169.1 (162–187)	168.8 (143–187)	183.8 (177–187)	174.8 (160–193)	173.5 (161–187)	166.0 (156–182)	174.5 (156–193)
Mean weight, kg (range)	69.9 (51.9–79.9)	64.2 (51.9–70.9)	67.0 (51.9–77.8)	58.6 (54.1–65.5)	76.6 (59.4–94.0)	67.5 (54.6–85.3)	67.3 (51.9–94.0)	77.5 (67.8–92.0)	80.2 (66.3–95.9)	73.2 (52.8–100.5)	68.0 (60.6–89.0)	74.7 (52.8–100.5)

99 BID, twice daily; MAD, multiple ascending dose; QD, once daily; SAD, single ascending dose; TID, three times daily.

100 MAD cohorts. Overall, subjects were predominately white except for the SAD ethnic cohort
101 where all participants were Asian.

102 **Safety and tolerability of AT-752**

103 Overall, AT-752 was well tolerated in both the SAD and MAD cohorts, with no serious
104 adverse events (SAEs) or discontinuations due to adverse events (AEs). Non-serious
105 treatment-emergent adverse events (TEAEs) were mild or moderate in severity and resolved
106 by the end of the study. The most frequently reported TEAEs are summarized in **Table 2**.
107 Sporadic cases of gastrointestinal-related events, including mild-to-moderate vomiting,
108 occurred mostly at higher doses. No treatment-related or dose-related trends in clinical
109 laboratory values, vital sign measurements, or 12-lead electrocardiogram (ECG) parameters
110 were observed.

111 **PK evaluation**

112 **(i) SAD cohorts**

113 Following single oral administration of AT-752 under fasting conditions, plasma
114 concentrations of the parent prodrug AT-281 increased rapidly and were transient. AT-281
115 was rapidly eliminated with a short plasma half-life ($t_{1/2}$) of approximately 0.5 h regardless
116 of dose, resulting in mostly unquantifiable levels 4–6 h post dose. The intermediate L-alanyl
117 metabolite AT-551 also exhibited a transient exposure with a mean $t_{1/2}$ of approximately 2–
118 3 h across dose groups. The N⁶-methyl nucleoside metabolite, AT-229, subsequently peaked
119 and exhibited a slower elimination phase (**Figure 2**). Plasma concentrations of AT-273
120 (surrogate for the intracellular active triphosphate AT-9010) appeared more gradually than
121 AT-281 and other metabolites, and exhibited a long $t_{1/2}$ of approximately 15–25 h across
122 doses, reflecting sustained intracellular exposure of the active metabolite AT-9010.

123

124 **Table 2. Summary of most frequent TEAEs reported by >2 subjects**

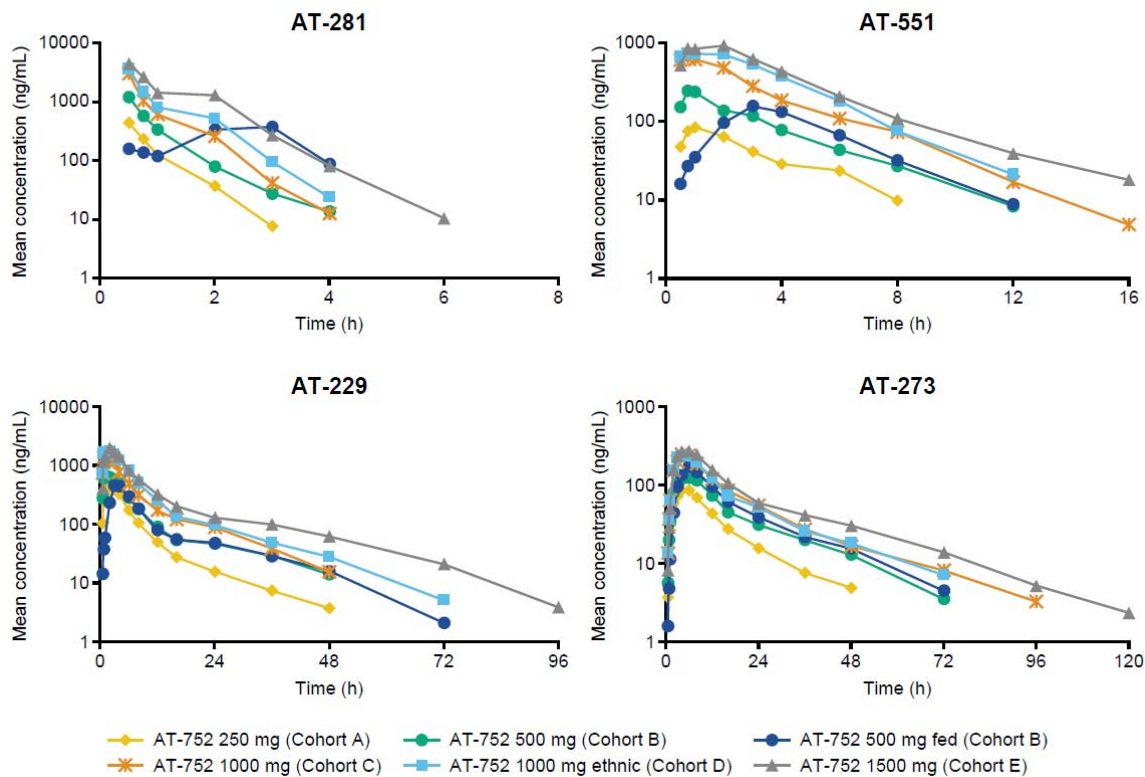
TEAE	SAD cohorts								MAD cohorts					Overall N=65
	Cohort A AT-752 250 mg n=6	Cohort B AT-752 500 mg n=7	Cohort B AT-752 500 mg fed* n=7	Cohort C AT-752 1000 mg n=6	Cohort D AT-752 1000 mg ethnic n=6	Cohort E AT-752 1500 mg n=6	Pooled placebo n=10	Total N=41	Cohort F AT-752 1000 mg QD x 7 days n=6	Cohort G AT-752 750 mg BID x 4.5 days n=6	Cohort H AT-752 750 mg TID x 4.3 days n=6	Pooled placebo n=6	Total N=24	
Headache, n (%)	0	2 (28.6)	4 (57.1)	1 (16.7)	0	2 (33.3)	1 (10.0)	8 (19.5)	0	1 (16.7)	0	1 (16.7)	2 (8.3)	10 (15.4)
Nausea, n (%)	0	0	1 (14.3)	1 (16.7)	0	1 (16.7)	0	3 (7.3)	0	1 (16.7)	0	1 (16.7)	2 (8.3)	5 (7.7)
Vomiting, n (%)	0	0	0	1 (16.7)	0	2 (33.3)	0	3 (7.3)	0	1 (16.7)	0	0	1 (4.2)	4 (6.2)

125 *Food effect cohort.

126 BID, twice daily; QD, once daily; TEAE, treatment-emergent adverse event; TID, three times daily.

127

128 **Figure 2. Mean plasma concentration–time profiles of AT-281 and its metabolites AT-551,**
129 **AT-229, and AT-273 following oral administration of single ascending doses of AT-752**



130
131

132 **Table 3. Summary of plasma PK parameters of AT-281 and metabolites AT-551, AT-229,**
 133 **and AT-273 following oral administration of single ascending doses of AT-752**

Cohort	C _{max} (ng/mL)	T _{max} (h)	AUC _{inf} (ng/mL*h)	t _{1/2} (h)	CL _R (L/h)
AT-281					
250 mg (Cohort A)	482±131	0.5 (0.5–0.8)	347±64.0	0.5±0.1	7.5±1.5
500 mg (Cohort B)	1230±1110	0.5 (0.5–6.0)	1110±687	0.5±0.1	10.9±5.4
500 mg fed (Cohort B) Food effect*	488±303 52.2 (22.1–123.6)	2.0 (0.5–3.0)	980±716 80.2 (38.7–166.2)	0.7±0.3	6.6±1.6
1000 mg (Cohort C)	3040±960	0.5 (0.5–0.6)	1910±508	0.5±0.1	11.4±1.7
1000 mg ethnic (Cohort D)	3670±1260	0.5 (0.5–0.5)	2730±944	0.5±0.1	9.7±4.2
1500 mg (Cohort E)	5050±2080	0.5 (0.5–0.8)	4630±1500	0.6±0.2	8.3±2.2
AT-551					
250 mg (Cohort A)	89.2±35.6	1.0 (0.8–2.0)	302±70.5	2.1±0.3	2.0±0.3
500 mg (Cohort B)	231±155	1.0 (0.8–8.0)	898±437	2.4±0.5	2.1±0.6
500 mg fed (Cohort B) Food effect*	154±83.6 70.5 (42.8–116.0)	3.1 (3.0–4.0)	737±289 78.3 (61.8–99.2)	2.3±0.4	2.1±0.4
1000 mg (Cohort C)	695±468	0.8 (0.5–2.0)	2330±1060	2.2±0.4	2.1±0.6
1000 mg ethnic (Cohort D)	895±418	0.9 (0.5–2.0)	3320±1630	2.0±0.3	2.1±0.6
1500 mg (Cohort E)	1080±217	1.5 (0.8–2.0)	4100±494	3.2±1.2	1.9±0.4
AT-229					
250 mg (Cohort A)	446±121	2.1 (2.0–3.0)	2890±680	16.9±8.6	13.7±1.6
500 mg (Cohort B)	765±307	1.0 (0.8–4.0)	5480±1630	15.1±6.2	13.6±5.4
500 mg fed (Cohort B) Food effect*	488±324 64.9 (43.8–96.2)	4.0 (3.0–6.1)	4310±1400 78.4 (68.4–89.9)	11.2±4.9	12.5±2.8
1000 mg (Cohort C)	1640±474	0.9 (0.8–3.0)	10300±3070	12.4±10.7	14.2±3.8
1000 mg ethnic (Cohort D)	2010±489	1.5 (0.8–2.0)	14000±4210	14.7±10.1	13.4±2.5
1500 mg (Cohort E)	2030±600	2.0 (1.0–2.0)	16700±3780	12.5±3.8	15.0±2.4
AT-273					
250 mg (Cohort A)	90.8±18.9	6.0 (3.0–6.0)	1440±280	19.1±10.2	15.8±2.8
500 mg (Cohort B)	135±24.9	4.0 (3.0–8.0)	2390±478	13.9±5.9	16.8±7.6
500 mg fed (Cohort B) Food effect*	175±28.8 132.0 (109.8–158.6)	6.0 (6.0–8.1)	2990±558 125.6 (111.2–141.8)	17.3±11.0	13.4±3.3
1000 mg (Cohort C)	241±71.1	4.1 (4.0–6.3)	4350±1520	26.2±12.2	17.1±6.5
1000 mg ethnic (Cohort D)	240±46.2	5.0 (3.1–6.0)	3830±519	16.3±3.0	18.7±2.1
1500 mg (Cohort E)	283±31.6	6.0 (3.2–6.1)	5460±1190	21.7±6.2	19.5±4.1

134 *Food effect is represented as geometric mean ratio (90% CI).

135 C_{max}, AUC_{inf}, and t_{1/2} are represented as mean ± SD. T_{max} is represented as median (minimum–maximum). CL_R is

136 represented as mean ± SD.

137 AUC_{inf}, area under the curve extrapolated to infinity; CI, confidence interval; CL_R, renal clearance; C_{max}, maximum plasma

138 concentration; SD, standard deviation; t_{1/2}, half-life; T_{max}, time to reach maximum concentration.

139

140 Plasma PK parameters for the SAD cohorts are summarized in **Table 3**. Following single oral

141 administration of AT-752 at 250–1500 mg, peak concentration (C_{max}) and extent of exposure

142 (AUC) were slightly higher numerically (with, however, largely overlapping ranges) for the

143 ethnic cohort compared with the non-ethnic cohort at the same dose level (AT-752 1000

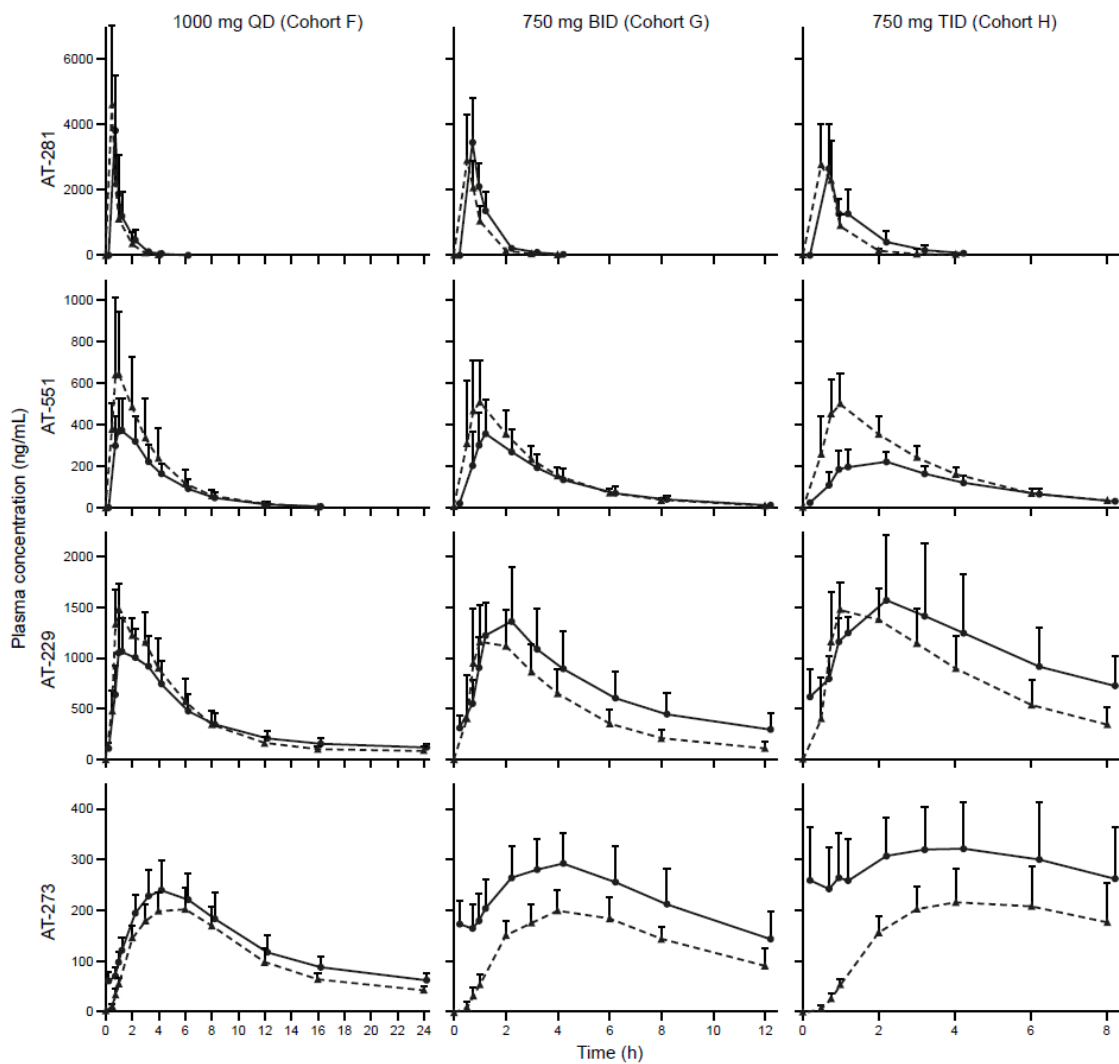
144 mg) for AT-281, AT-551, and AT-229. For AT-273, the guanosine circulating metabolite
145 representing the intracellular active triphosphate metabolite AT-9010, C_{max} , and AUC were
146 similar for the ethnic cohort and the non-ethnic cohort at the same dose level. Time to peak
147 concentration (T_{max}) was also similar for the ethnic cohort and the non-ethnic cohort for all
148 metabolites. The comparable PK profiles observed between the Asian and mostly Caucasian
149 subject cohorts suggests an absence of PK ethnic sensitivity. Plasma exposure of AT-281 and
150 its metabolites increased over the studied dose range of 250–1500 mg: AT-229 increased in
151 a dose-proportional manner, and AT-281 and AT-551 increased in a greater than dose-
152 proportional manner, whereas AT-273 was slightly less than dose-proportional (see Figure
153 S1 in the Supplementary Materials). A high-fat/high-calorie meal delayed and decreased
154 peak levels of AT-281, AT-551, and AT-229 but had limited-to-no impact on their total
155 exposure, and slightly increased the plasma exposure of AT-273 in comparison to fasted
156 conditions. This demonstrates that AT-752 can therefore be taken with or without food.
157 The extent of urine elimination was low for AT-281 (up to 2.4%) and AT-551 (up to 0.7%),
158 and moderate for AT-229 (10.7–17.9%) and AT-273 (6.7–8.8%). Total urine recovery ranged
159 from approximately 20–30% of administered doses across cohorts, and renal clearance (CL_R)
160 of AT-229 and AT-273 exceeded estimated glomerular filtration rate (eGFR).

161 **(ii) MAD cohorts**

162 Following repeat dosing of AT-752 1000 mg once daily (QD), 750 mg twice daily (BID), and
163 750 mg three times daily (TID), plasma AT-281 (the unchanged prodrug) did not meaningfully
164 accumulate due to its rapid elimination (**Figure 3**). Plasma exposure of AT-273 increased by
165 approximately 25, 60, and 80% with QD, BID, and TID, respectively, due to its long plasma
166 half-life, reflecting rapid accumulation and sustained intracellular exposure of the active
167 metabolite AT-9010. Steady-state plasma PK parameters are summarized in **Table 4**. Based

168 on the trough AT-273 concentrations, steady state was essentially achieved by Day 3 in all
169 MAD cohorts (Figure 4).

170 **Figure 3. Mean (+ SD) plasma concentration–time profiles of AT-281 and metabolites AT-**
171 **551, AT-229, and AT-273 following oral administration of multiple ascending doses of AT-**
172 **752**



173

174 Dashed line: first dose on Day 1; solid line: last dose at steady state.

175 BID, twice daily; QD, once daily; SD, standard deviation; TID, three times daily.

176 **Table 4. Summary of steady-state plasma PK parameters of AT-281 and metabolites AT-**
 177 **551, AT-229, and AT-273 following oral administration of multiple ascending doses of AT-**
 178 **752**

Cohort	C _{max} (ng/mL)	T _{max} (h)	AUC _{tau} (ng/mL*h)
AT-281			
1000 mg QD (Cohort F)	3810±1670	0.5 (0.5–0.5)	3090±1530
750 mg BID (Cohort G)	3490±1280	0.5 (0.5–0.8)	2690±640
750 mg TID (Cohort H)	3010±754	0.5 (0.5–1.0)	2540±572
AT-551			
1000 mg QD (Cohort F)	392±143	1.0 (0.8–2.0)	1650±498
750 mg BID (Cohort G)	365±159	1.0 (0.8–2.0)	1330±503
750 mg TID (Cohort H)	245±30.2	1.5 (0.8–2.0)	944±173
AT-229			
1000 mg QD (Cohort F)	1200±284	0.9 (0.8–2.0)	8290±2290
750 mg BID (Cohort G)	1470±404	1.5 (0.8–2.2)	7960±2970
750 mg TID (Cohort H)	1600±640	1.5 (1.0–2.0)	8880±3330
AT-273			
1000 mg QD (Cohort F)	241±56.3	4.0 (3.0–4.0)	3120±694
750 mg BID (Cohort G)	288±58.4	3.5 (3.0–4.0)	2680±730
750 mg TID (Cohort H)	330±97.7	3.5 (3.0–6.0)	2370±743

179 C_{max} and AUC_{tau} represented as mean ± SD. T_{max} is represented as median (minimum–maximum).

180 AUC_{tau}, area under plasma concentration-time curve over the dosing interval; BID, twice daily; C_{max}, peak concentration;

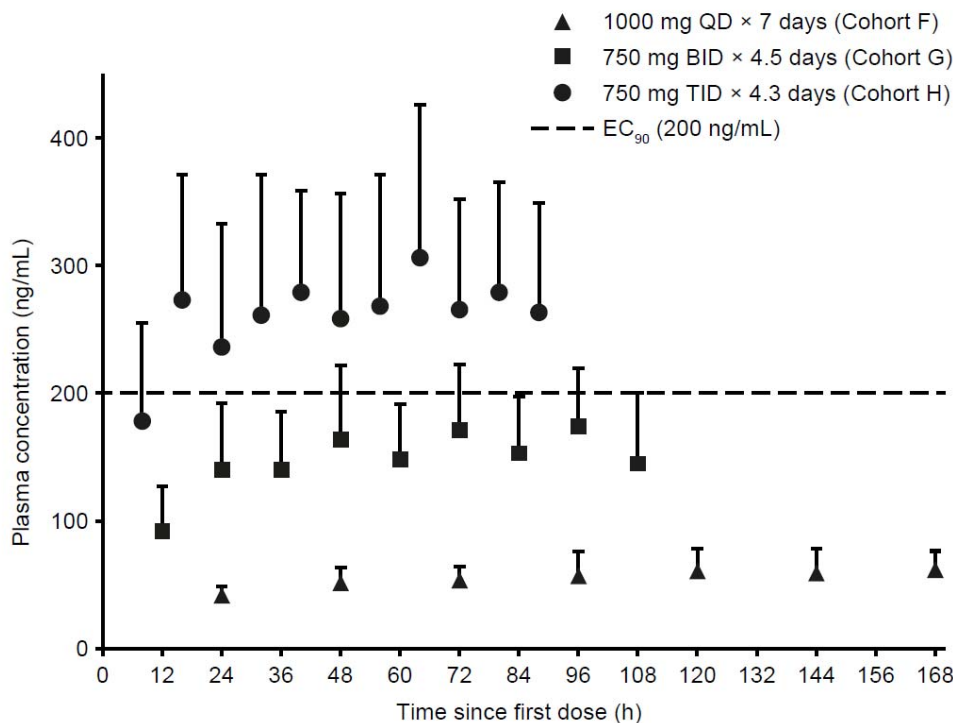
181 PK, pharmacokinetic; QD, once daily; TID, three times daily; T_{max}, time to peak concentration.

182

183 As depicted in Figure 4, among the MAD cohorts, only AT-752 750 mg TID led to a rapid
 184 increase in plasma AT-273 levels, with mean trough levels within the first day exceeding the
 185 90% effective concentration (EC₉₀) of the drug in inhibiting DENV replication *in vitro* (0.64
 186 μM or 200 ng/mL of equivalent AT-273), and maintained these levels over the treatment
 187 period.

188

189 **Figure 4. Mean (+ SD) plasma trough concentration–time profiles of AT-273 with following**
190 **oral administration of multiple ascending doses of AT-752**



191

192 BID, twice daily; EC₉₀, 90% effective concentration; QD, once daily; SD, standard deviation; TID, three times daily.

193

194 DISCUSSION

195 AT-752, when metabolized to the active triphosphate AT-9010, has been demonstrated to
196 target the NS5 RNA-dependent RNA polymerase (RdRp) of DENV1–4 (17). NS5, the largest
197 and most conserved nonstructural protein encoded by flaviviruses, is a promising target for
198 antivirals, particularly nucleoside/nucleotide analogs in the treatment of dengue (5).

199 This first-in-human Phase 1 study of AT-752 evaluated the safety, tolerability, and PK of
200 ascending single and multiple doses in healthy subjects. AT-752 demonstrated a favorable
201 safety profile and was well tolerated in healthy subjects when administered as a single oral
202 dose up to 1500 mg, or when administered as multiple oral doses up to 750 mg TID. No SAEs

203 were observed, and no subjects experienced AEs that lead to study drug discontinuation.

204 Most TEAEs were mild in severity, and all TEAEs resolved by the end of the study. There

205 were no clinically significant physical examination findings, vital signs, or ECGs observed.

206 In the SAD cohorts, plasma exposure of AT-281 and its metabolites was approximately dose-

207 proportional over the studied dose range of 250–1500 mg AT-752. Fed conditions led to a

208 48% reduction in C_{max} compared with fasted conditions, whereas AUC values were similar.

209 The extent of urinary elimination of AT-281 and its metabolites was low-to-moderate. Renal

210 clearance of the nucleoside metabolites AT-229 and AT-273 exceeded eGFR, suggesting

211 involvement of active secretion in their renal elimination. Furthermore, the similar PK

212 profiles observed between the ethnic and non-ethnic cohorts suggests an absence of PK

213 ethnic sensitivity in Asian participants; therefore, dose adjustment of AT-752 in this

214 population does not appear necessary. In the MAD cohorts, C_{max} of AT-281 were attained

215 approximately 0.5 h post dose (median estimates) for all dose levels. Plasma exposure of

216 AT-273 increased with increasing dose levels due to its long plasma half-life, reflecting rapid

217 accumulation and sustained intracellular exposure of the active metabolite AT-9010. AT-752

218 750 mg TID led to a rapid increase in plasma AT-273 levels, exceeding the target EC_{90} of 0.64

219 μ M, and maintained this level over the treatment period.

220 In summary, the results of this study demonstrate that AT-752 was well tolerated when

221 administered as a single dose up to 1500 mg, or when administered as multiple doses up to

222 750 mg TID. In the SAD cohorts, AT-752 exhibited no PK ethnic sensitivity in

223 South/Southeast/East Asian participants and no food effect was observed, demonstrating

224 that ethnic dose adjustment is not necessary and that AT-752 can be taken with or without

225 food. In the MAD cohorts, AT-752 TID exceeded the target antiviral level for inhibition of

226 DENV replication. The favorable safety and PK results reported here demonstrate AT-752 as

227 an attractive antiviral for the treatment of dengue, and support dose selection of AT-752 in
228 future clinical studies.

229

230 **MATERIALS AND METHODS**

231 The study protocol was approved by the Human Research Ethics Committee before the trial
232 began, and written informed consent was obtained from each subject before entering the
233 study. This study was conducted according to the principles of the International Council for
234 Harmonisation harmonised tripartite guideline E6(R2): Good Clinical Practice, and the
235 ethical principles from the Declaration of Helsinki.

236 **Study design**

237 This was a Phase 1, first-in-human, randomized, double-blind, placebo-controlled study
238 consisting of two sequential parts: SAD and MAD. The SAD cohorts included a food-effect
239 cohort and both SAD and MAD cohorts evaluated the safety, tolerability, and PK of AT-752
240 (ClinicalTrials.gov registration no. NCT04722627). All subjects were screened up to 28 days
241 prior to the first study drug administration on Day 1, which included clinical history, physical
242 examination, 12-lead ECG, vital signs, and laboratory tests of blood and urine.

243 **(i) SAD cohorts**

244 Subjects in the SAD cohorts were assigned to one of five sequential dose cohorts (eight
245 subjects per cohort) on Day 1 prior to the first dose. Subjects were randomized 3:1 within
246 each cohort to receive AT-752 or a matching placebo (**Table 5**). Sentinel dosing was
247 employed for two subjects in each SAD cohort in a ratio of 1:1 (one active, one placebo),
248 and were dosed at least 48 h before the remainder of the cohort was dosed. All treatments
249 were administered orally under fasting conditions, except for the food effect cohort. As part
250 of the food effect evaluation, subjects in Cohort B (n=7) remained confined to the clinic for

251 an additional study drug administration on Day 7 under fed conditions. Subjects fasted
252 overnight for at least 8 h and received a high-fat and high-calorie breakfast approximately
253 30 minutes (\pm 5 minutes) before study drug administration. Subjects consumed the meal
254 within 30 minutes or less and consumed at least 75% of the meal. The high-fat
255 (approximately 50% of total calorific content of the meal) and high-calorie (approximately
256 800–1000 calories) breakfast, followed Food and Drug Administration (FDA) guidance
257 recommendations and provided approximately 150, 250, and 500–600 calories from
258 protein, carbohydrate, and fat, respectively.

259 **Table 5. SAD cohorts**

260

Cohort	Dose (mg)	Administration
A	250	Day 1 (fasting)
B (+ food effect)	500	Day 1 (fasting); Day 7 (fed)
C	1000	Day 1 (fasting)
D (Ethnic)	1000	Day 1 (fasting)
E	1500	Day 1 (fasting)

261

262

263

264 **(ii) MAD cohorts**

265 Subjects in the MAD cohorts were assigned to a repeat-dose cohort on Day 1 prior to the
266 first dose. Subjects were randomized 3:1 to receive AT-752 or a matching placebo (**Table 6**).
267 Sentinel dosing was employed for two subjects in each MAD cohort in a ratio of 1:1 (one
268 active, one placebo), and were dosed at least 48 h before the remainder of the cohort was
269 dosed. All treatments were administered orally under fasting conditions. Dose escalation to
270 Cohort G occurred based on review of available safety data (through Day 12) and PK data
271 (through Day 8) of Cohort F. Similarly, dose escalation to Cohort H occurred based on review
272 of available safety data (through Day 10) and PK data (through Day 6) of Cohort G.

273

274 **Table 6. MAD cohorts**

275

Cohort	Dose (mg)	Administration
F	1000	QD × 7 days
G	750	BID × 4 days plus one dose on Day 5
H	750	TID × 4 days plus one dose on Day 5

276

277 BID, twice daily; QD, once daily; TID, three times daily.

278 **Study subjects**

279 Healthy subjects between the ages of 18 and 65 years who met the inclusion and exclusion
280 criteria were considered eligible for this study. All subjects were required to weigh at least
281 50 kg and have a body mass index of between 18 and 29 kg/m², inclusive. Subjects in Cohort
282 D (ethnic cohort) must have been of first to third generation South/Southeast/East Asian
283 descent. Exclusion criteria included clinically relevant abnormal medical history, physical
284 findings, ECG, or laboratory values at the pre-trial screening assessment; positive test for
285 hepatitis B surface antigen, hepatitis C virus antibody, human immunodeficiency virus types
286 1 or 2 antibodies, or SARS-CoV-2 at screening; or receipt of a vaccine against COVID-19 in
287 the 14 days before the first dose. Subjects could not have used a prescription medicine,
288 over-the-counter medicine, or herbal or dietary supplements during the 7 days before the
289 first dose.

290 **Pharmacokinetic assessments**

291 Blood samples for plasma PK analyses were collected pre dose and 0.5, 0.75, 1, 2, 3, 4, 6, 8,
292 12, 16, 24, 36, 48, 72, 96, and 120 h post dose for the SAD cohorts. For the food effect
293 cohort, blood samples were also taken on Day 7 (fed state) at ≤5 minutes prior to dosing
294 and 0.5, 0.75, 1, 2, 3, 4, 6, 8, 12, 16, 24, 36, 48, 72, 96, and 120 h post dose. For Cohort F,
295 blood samples were collected prior to dosing and 0.5, 0.75, 1, 2, 3, 4, 6, 8, 12, and 16 h post
296 dose on Day 1; ≤5 minutes prior to dosing and 4 h post dose on Days 2–6; ≤5 minutes prior
297 to dosing and 0.5, 0.75, 1, 2, 3, 4, 6, 8, 12, 16, 24, 36, 48, 72, 96, and 120 h post dose on Day

298 7. For Cohort G, blood samples were collected prior to dosing and 0.5, 0.75, 1, 2, 3, 4, 6, and
299 8 h post dose on Day 1 (AM); ≤ 5 minutes prior to dosing on Day 1 (PM); ≤ 5 minutes prior to
300 AM and PM dosing on Days 2–4; ≤ 5 minutes prior to AM dosing and 0.5, 0.75, 1, 2, 3, 4, 6, 8,
301 12, 16, 24, 36, 48, 72, 96, and 120 h post dose on Day 5. For Cohort H, blood samples were
302 collected prior to dosing and 0.5, 0.75, 1, 2, 3, 4, and 6 h post dose on Day 1 (AM); ≤ 5
303 minutes prior to PM dosing on Day 1; ≤ 5 minutes prior to AM and PM dosing on Days 2 and
304 3; ≤ 5 minutes prior to AM dosing (Day 4); ≤ 5 minutes prior to PM dosing and 0.5, 0.75, 1, 2,
305 3, 4, and 6 h post dose on Day 4 (PM); ≤ 5 minutes prior to AM dosing and 0.5, 0.75, 1, 2, 3,
306 4, 6, 8, 12, 16, 24, 48, 72, 96, and 120 h post dose on Day 5. Urine samples for PK analysis
307 were collected prior to dosing and 0–4, 4–8, 8–12,
308 12–24, 24–48, 48–72, 72–96, and 96–120 h post dose on Day 1 for the SAD cohorts, as well
309 as on Day 7 (fed state) for the food effect cohort. For Cohort F, urine samples were collected
310 prior to dosing on Day 1, and a pooled sample taken over 0–24 h post dose on Day 7. The
311 collected plasma and urine samples underwent quantitation for AT-281 and its metabolites
312 AT-551, AT-229, and AT-273 using validated liquid chromatography/tandem mass
313 spectrometry (LC-MS/MS) methodologies. Plasma assay ranges were 5–5000 ng/mL for AT-
314 281 and AT-551, and 2–2000 ng/mL for AT-229 and AT-273; urine assay ranges were 5–5000
315 ng/mL for AT-281 and AT-551, and 10–10000 ng/mL for AT-229 and AT-273.

316 **Statistical analysis**

317 Plasma concentration–time data were analyzed by non-compartmental approach
318 using Phoenix[®] WinNonlin[®] Version 8.3 (Certara USA Inc., Princeton, New Jersey) or SAS[®]
319 Version 9.4 (SAS Institute Inc., Cary, North Carolina), as appropriate. For the SAD cohorts,
320 dose proportionality was assessed on Day 1 for AT-281, AT-551, AT-229, and AT-273 in the
321 plasma using the power regression model for the AUCs and C_{\max} PK parameters (19).

322 To assess the impact of a high-fat meal on exposure to AT-281, AT-551, AT-229, and AT-273,
323 the log transformed values of AUC_{inf} and C_{max} were analyzed in Cohort B for AT-281, AT-551,
324 AT-229, and AT-273 using a linear mixed effect model with fed/fasted status as a fixed effect
325 and subject as a random effect.

326 Ethnic sensitivity analysis for analyte AT-752 PK was performed by visual inspection of mean
327 concentration vs time profiles and assessment of PK parameters in summary tables.

328 **Laboratory and safety assessment**

329 Safety assessments included monitoring of AEs, clinical laboratory tests (hematology, serum
330 chemistry, urinalysis, coagulation tests, and cardiac biomarkers), vital sign measurements,
331 12-lead ECGs, and physical examination. All AEs were coded using Medical Dictionary for
332 Regulatory Activities (MedDRA) Version 24.1.

333

334 **ACKNOWLEDGEMENTS**

335 This study was funded by Atea Pharmaceuticals, Inc. Medical writing support was provided
336 by Samantha Brick, Elements Communications Ltd, UK, and funded by Atea Pharmaceuticals,
337 Inc.

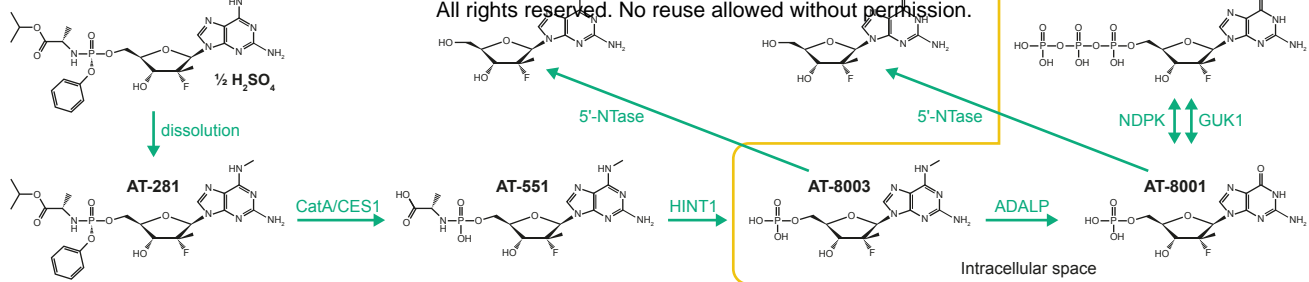
338 Xiao-Jian Zhou, Maureen Montrond, Laura Ishak, Keith Pietropaolo, Dayle James, Bruce
339 Belanger, Arantxa Horga, Janet Hammond are employees of and may own stock in Atea
340 Pharmaceuticals, Inc, Boston, MA, USA; Jason Lickliter is an employee of Nucleus Network,
341 Melbourne, Australia, which was contracted by Atea Pharmaceuticals, Inc to help perform
342 this research.

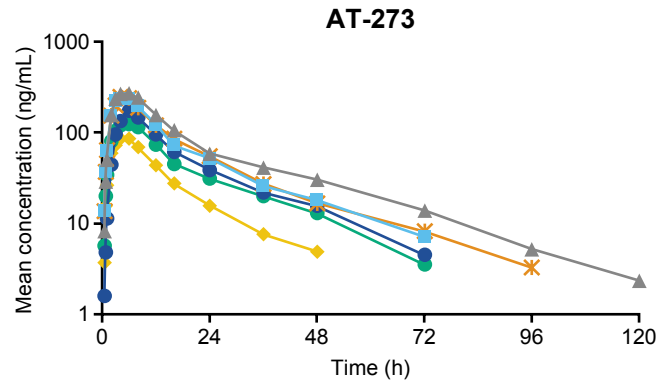
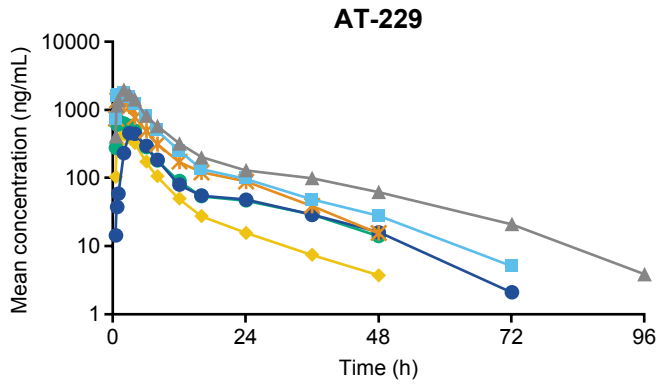
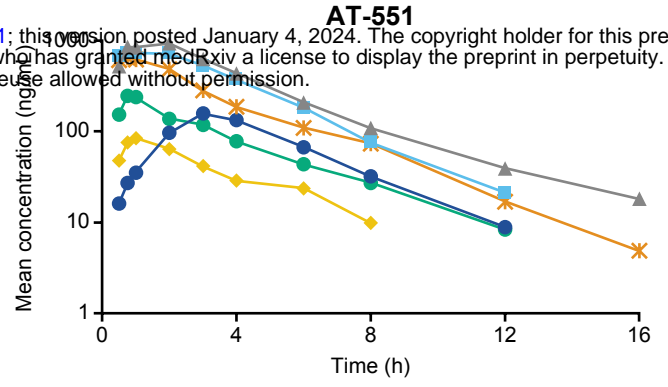
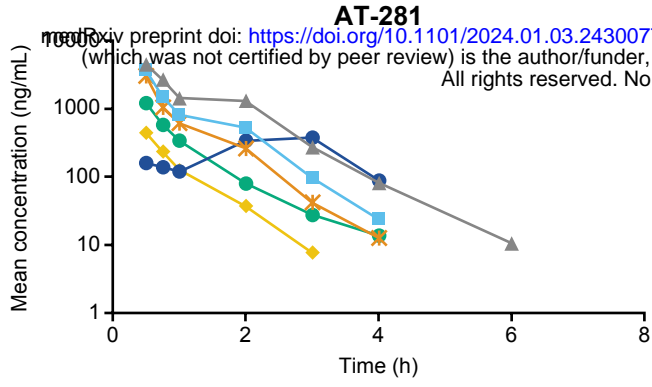
343 **REFERENCES**

- 344 1. Murugesan A, Manoharan M. Dengue Virus. *Emerging and Reemerging Viral Pathogens*.
345 2020:281-359. doi: 10.1016/B978-0-12-819400-3.00016-8. Epub 2019 Sep 20.
- 346 2. Ebi KL, Nealon J. 2016. Dengue in a changing climate. *Environmental Research* 151:115-
347 123.
- 348 3. Harapan H, Michie A, Sasmono RT, Imrie A. 2020. Dengue: A Minireview. *Viruses* 12.
- 349 4. Chan CY, Ooi EE. 2015. Dengue: an update on treatment options. *Future Microbiology*
350 10:2017-2031.
- 351 5. Obi JO, Gutiérrez-Barbosa H, Chua JV, Deredge DJ. 2021. Current Trends and Limitations
352 in Dengue Antiviral Research. *Trop Med Infect Dis* 6.
- 353 6. Palanichamy Kala M, St John AL, Rathore APS. 2023. Dengue: Update on Clinically
354 Relevant Therapeutic Strategies and Vaccines. *Curr Treat Options Infect Dis* 15:27-52.
- 355 7. Pintado Silva J, Fernandez-Sesma A. 2023. Challenges on the development of a dengue
356 vaccine: a comprehensive review of the state of the art. *Journal of General Virology* 104.
- 357 8. Thomas SJ, Yoon IK. 2019. A review of Dengvaxia®: development to deployment. *Hum*
358 *Vaccin Immunother* 15:2295-2314.
- 359 9. Angelin M, Sjölin J, Kahn F, Ljunghill Hedberg A, Rosdahl A, Skorup P, Werner S,
360 Woxenius S, Askling HH. 2023. Qdenga® - A promising dengue fever vaccine; can it be
361 recommended to non-immune travelers? *Travel Medicine and Infectious Disease*
362 54:102598.
- 363 10. Shukla R, Ramasamy V, Shanmugam RK, Ahuja R, Khanna N. 2020. Antibody-Dependent
364 Enhancement: A Challenge for Developing a Safe Dengue Vaccine. *Front Cell Infect*
365 *Microbiol* 10:572681.

- 366 11. Nguyen NM, Tran CN, Phung LK, Duong KT, Huynh Hle A, Farrar J, Nguyen QT, Tran HT,
367 Nguyen CV, Merson L, Hoang LT, Hibberd ML, Aw PP, Wilm A, Nagarajan N, Nguyen DT,
368 Pham MP, Nguyen TT, Javanbakht H, Klumpp K, Hammond J, Petric R, Wolbers M,
369 Nguyen CT, Simmons CP. 2013. A randomized, double-blind placebo controlled trial of
370 balapiravir, a polymerase inhibitor, in adult dengue patients. *J Infect Dis* 207:1442-50.
- 371 12. Tricou V, Minh NN, Van TP, Lee SJ, Farrar J, Wills B, Tran HT, Simmons CP. 2010. A
372 randomized controlled trial of chloroquine for the treatment of dengue in Vietnamese
373 adults. *PLoS Negl Trop Dis* 4:e785.
- 374 13. Whitehorn J, Nguyen CVV, Khanh LP, Kien DTH, Quyen NTH, Tran NTT, Hang NT, Truong
375 NT, Hue Tai LT, Cam Huong NT, Nhon VT, Van Tram T, Farrar J, Wolbers M, Simmons CP,
376 Wills B. 2016. Lovastatin for the Treatment of Adult Patients With Dengue: A
377 Randomized, Double-Blind, Placebo-Controlled Trial. *Clin Infect Dis* 62:468-476.
- 378 14. Low JG, Sung C, Wijaya L, Wei Y, Rathore APS, Watanabe S, Tan BH, Toh L, Chua LT, Hou
379 Y, Chow A, Howe S, Chan WK, Tan KH, Chung JS, Cherng BP, Lye DC, Tambayah PA, Ng
380 LC, Connolly J, Hibberd ML, Leo YS, Cheung YB, Ooi EE, Vasudevan SG. 2014. Efficacy and
381 safety of celgosivir in patients with dengue fever (CELADEN): a phase 1b, randomised,
382 double-blind, placebo-controlled, proof-of-concept trial. *Lancet Infect Dis* 14:706-715.
- 383 15. Pozo-Aguilar JO, Monroy-Martínez V, Díaz D, Barrios-Palacios J, Ramos C, Ulloa-García A,
384 García-Pillado J, Ruiz-Ordaz BH. 2014. Evaluation of host and viral factors associated
385 with severe dengue based on the 2009 WHO classification. *Parasites & Vectors* 7:590.
- 386 16. Good SS, Shannon A, Lin K, Moussa A, Julander JG, La Colla P, Collu G, Canard B,
387 Sommadossi JP. 2021. Evaluation of AT-752, a Double Prodrug of a Guanosine
388 Nucleotide Analog with In Vitro and In Vivo Activity against Dengue and Other
389 Flaviviruses. *Antimicrob Agents Chemother* 65:e0098821.

- 390 17. Feracci M, Eydoux C, Fattorini V, Lo Bello L, Gauffre P, Selisko B, Sutto-Ortiz P, Shannon
391 A, Xia H, Shi PY, Noel M, Debart F, Vasseur JJ, Good S, Lin K, Moussa A, Sommadossi JP,
392 Chazot A, Alvarez K, Guillemot JC, Decroly E, Ferron F, Canard B. 2023. AT-752 targets
393 multiple sites and activities on the Dengue virus replication enzyme NS5. *Antiviral Res*
394 212:105574.
- 395 18. Good SS, Westover J, Jung KH, Zhou XJ, Moussa A, La Colla P, Collu G, Canard B,
396 Sommadossi JP. 2021. AT-527, a Double Prodrug of a Guanosine Nucleotide Analog, Is a
397 Potent Inhibitor of SARS-CoV-2 In Vitro and a Promising Oral Antiviral for Treatment of
398 COVID-19. *Antimicrob Agents Chemother* 65.
- 399 19. Smith BP, Vandenhende FR, DeSante KA, Farid NA, Welch PA, Callaghan JT, Forgue ST.
400 2000. Confidence interval criteria for assessment of dose proportionality. *Pharm Res*
401 17:1278-83.
- 402





- ◆ AT-752 250 mg (Cohort A)
- AT-752 500 mg (Cohort B)
- AT-752 500 mg fed (Cohort B)
- ✱ AT-752 1000 mg (Cohort C)
- AT-752 1000 mg ethnic (Cohort D)
- ▲ AT-752 1500 mg (Cohort E)

