

1 **Malaria and other risk factors for malnutrition, and the**
2 **impact of intermittent preventive therapy for malaria on**
3 **nutritional status of school-age children in Tanzania. A**
4 **cross-sectional survey and a randomized controlled**
5 **open-label trial.**

6 Jeremiah John Hhera^{1,3}, Geoffrey Makenga^{2,3}, Jean-Pierre Van geertruyden³.

7 ¹Mawenzi Regional Referral Hospital, Kilimanjaro, Tanzania.

8 ²National Institute of Medical Research, Tanga Centre, Tanga, Tanzania.

9 ³Global Health Institute, University of Antwerp, Antwerp, Belgium.

10 **Abstract**

11 **Background:** WHO and the Lancet reported that malaria and malnutrition form a double health burden
12 in low and middle-income countries. Despite the massive implementation of several malaria
13 interventions, there is limited information on the impact of intermittent preventive therapy (IPTsc) for
14 malaria on the nutritional status of school-age children.

15 **Objective:** To determine malnutrition risk factors and evaluate the impact of IPTsc for malaria on
16 the nutritional status of school-age children in North-East Tanzania.

17 **Methods:** We analyzed secondary data from a cross-sectional baseline survey and a randomized
18 controlled open-label trial. Study participants were randomized to three treatment groups and
19 thereafter followed for 20 months. Data were analyzed using logistic regression and a linear mixed
20 model.

21 **Findings:** At baseline, the prevalence of malaria was 27%. 23% of ≤ 10 years children were
22 underweight, 21% were stunted, and 28% were either thin or severely thin. The odds of
23 stunting were 78% higher (AOR=1.78, 95%CI=[1.36, 2.33], $P < 0.001$) among children who had malaria
24 compared to those who did not. Children from low socioeconomic status (SES) had higher odds of
25 being underweight (AOR=1.50, 95%CI=[1.13, 2.01], $P = 0.006$) compared to their high SES
26 counterparts. During the intervention, change in mean weight, height, and BMI over time as
27 estimated from age-treatment interaction was not significantly different in the DP and ASAQ
28 treatment groups compared to the control group. A unit change in age increased weight, height,
29 and BMI by 2.2 units (p -value < 0.001), 3.3 units (p -value < 0.001), and 0.5 units (p -value < 0.001). The
30 height and weight in female children were higher compared to that of male children by 1 unit (p -value
31 < 0.001) and 0.8 unit (p -value < 0.001), respectively.

32 **Conclusion:** The burden of malaria and malnutrition in this study's setting is remarkable. Instead of
33 focusing only on malaria, public health agencies should reinforce nutritional programs by collaborating
34 with local communities to ensure food availability in schools and provide sustainable nutritional
35 education to the local community members.

36 **Key Words:** Malaria, malnutrition, Intermittent Preventive Therapy, nutrition in children and
37 adolescents, Tanzania

38 **1 Introduction**

39 Malaria is a vector-transmitted disease predominantly distributed in tropical regions. It affects
40 about 91 countries worldwide [1]. The World Health Organization (WHO) malaria report
41 documented 227 million malaria cases in 2019 from 85 malaria-endemic countries and 241
42 million cases in 2020 [2, 3]. 96% of malaria cases and deaths were reported from the African
43 region, and Tanzania was among the four countries that accounted for almost half the malaria-
44 related deaths in 2020 [3]. A tremendous burden of malaria has been reported among children
45 [2]. In malaria-endemic regions, a large proportion of school-age children live with subclinical
46 malaria and thus a reservoir for malaria parasites [4]. In Muheza, Tanzania, children aged 5-14
47 years had a malaria prevalence of 39% in 2016 and 26.4% in 2019 [5, 6].

48 Children in lower and middle-income countries (LMICs) have been experiencing a double burden
49 of malaria infections and malnutrition in the form of undernutrition. Malnutrition is a state of
50 imbalance of intake of nutrients that leads to measurable adverse effects on body shape,
51 functions, and clinical outcomes [7]. Body weight and height are the anthropometric indicators
52 used for measurements to quantify nutritional status. To ensure consistency and comparability,
53 the preferred units are the standard deviation (referred to as Z-score) of Weight-for-Age (WAZ),
54 Height-for-Age (HAZ), and Body Mass Index (BMI) [8]. Growth and nutritional assessment are
55 primarily implemented worldwide in children of 0 to 5 years compared to older children and
56 adolescents. UNICEF reported that 49.5 million children aged 0 to 5 years had acute
57 malnutrition globally in 2018 [9]. Although there is limited data on the nutritional status of 5 – 14

58 years old children, the Lancet report on worldwide body mass index (BMI) in 2016
59 documented the lowest record in South Asia and East Africa, 15.8 kg/m² and 16.5 kg/m²,
60 respectively [10]. The level of stunting is still high in LMICs, and the reduction rate is the
61 lowest in the African region despite several interventional programs [9]. The level of stunting was
62 reported to be high in 15 regions of the Tanzanian mainland in 2018 [11], and the lake zone
63 prevalence of wasting was 11.3% and stunting was 29% [12].

64 Malaria-Malnutrition interaction is a complex phenomenon with an inconclusive causal
65 relationship [13]. Malnutrition increases susceptibility to malaria, and recurrent malaria
66 infections predispose the affected population to malnutrition [14]. Previous findings showed an
67 increased risk of malaria in malnourished children. Malaria prevalence was higher among
68 malnourished children of age ≤ 5 years compared to the

69 ≥ 5 years group [15]. Observational studies from Sub-Saharan Africa and the Amazonian region
70 reported

71 an increased risk of malaria infection in undernourished school-age children [15, 16]. The relationship
72 between stunting and malaria occurrence has been contradicting. As noted previously, stunting
73 before transmission season was not associated with an increase in malaria incidence [17], and the
74 other study reported that stunting is associated with reduced malaria incidence [16].

75 In the past two decades, malaria control programs have been massively implemented in disease-
76 endemic areas [1, 2]. The use of drugs and vector-barrier for prevention was focused on ≤ 5 years and

77 pregnant mothers [18], rarely involving school-age children. The previous interventions in both areas
78 of intense perennial and seasonal transmission successfully minimized anemia and parasitemia in
79 all age groups but did not examine the impact on nutritional status [4, 5, 19, 20]. However, it was
80 noted in an observational study that treatment of severe malaria using artemisinin-based
81 combinations improved nutritional status among children with severe acute malnutrition [21].

82 Generally, previous studies conducted mainly on children under five suggest an association
83 between malaria and malnutrition. However, to the best of our knowledge, only a limited
84 number of malaria-malnutrition studies included school-age children, and most malaria
85 interventions did not address its impact on the nutritional status of school-age children.
86 Therefore, we analyzed data from a baseline survey and randomized clinical trial using
87 dihydroartemisinin-piperaquine (DP) and artesunate-amodiaquine (ASAQ) to, primarily,
88 determine the association between malaria and malnutrition.

89 The hypothesis for this study was that there is an association between malaria and malnutrition
90 in school-age children, and that the use of intermittent preventive therapy (IPTsc) for malaria
91 improves nutritional status among school-age children. The specific objectives that guided our
92 work were (i). To determine the prevalence of malnutrition and factors associated with
93 malnutrition among school-age children (ii). To explore the attribution of malaria on low Weight-
94 for-Age (WAZ), Height-for-Age (HAZ), and BMI in school-age children (iii). To evaluate the impact
95 of IPTsc on the trend of weight, height, and BMI in school-age children.

96 **2 Methods**

97 **2.1 Design and study population**

98 We analyzed the secondary data from a cross-sectional baseline survey and a randomized
99 controlled open-label trial. The preliminary study aimed to assess the effectiveness and safety of
100 two anti-malarial drugs for malaria prevention in school children. In this 3-arm trial using a
101 "balanced block design," Dihydroartemisinin-piperaquine (DP) and Artesunate-amodiaquine
102 (ASAQ) were used with the "standard of care" as a reference arm. The trial design and methods
103 were described in a published study protocol [22] that was registered on clinical trials.gov-
104 NCT03640403. The intervention continued for 12 months following recruitment. The study
105 participants were followed for an extra 8 months to observe rebound effects and late adverse
106 events due to interventional drugs.

107 The study targeted children of age between 5 to 15 years. Most children in this age range are
108 enrolled in primary schools, making school-age children our source population. The following
109 eligibility criteria were adopted from the study protocol [22], and children who met the criteria
110 were included in the study.

111 **2.1.1 Inclusion criteria**

- 112 • Male and female primary school children in a selected school

- 113 • Includes parental/guardian informed consent.
- 114 • Assent by primary school children aged 11 years and above.
- 115 • Aged 5–15 years at the baseline assessment.
- 116 • Currently, he/she lives within the pre-defined catchment area of Muheza District.
- 117 • Will remain within the same area throughout the study period (preferably pupils of class
- 118 five and below).

119 **2.1.2 Exclusion criteria**

120 Participants with at least one of the following criteria were excluded:

- 121 • Pupils of class/grade 6 or 7
- 122 • Currently enrolled in another study or participated in another investigational drug study
- 123 within the last 30 days.
- 124 • Known to have heart disease or a known cardiac ailment.
- 125 • Reports known hypersensitivity to the study drugs or any sulphonamides.
- 126 • Not willing to undergo all study procedures including physical examination and to provide
- 127 blood samples as per this study protocol.
- 128 • Having clinical features of severe anemia

- 129 • Has apparent severe infection or any condition that requires hospitalization
- 130 • Illness or conditions like haematologic, cardiac, renal, and hepatic diseases which in the
- 131 judgement of the investigator would subject the participant to undue risk or interfere with
- 132 the results of the study, including known G6PD deficiency and sickle cell traits.
- 133 • Body weight <14 kg

134 **2.2 Study setting**

135 The study was conducted in Muheza district, Tanga, Tanzania. The geographical location is in the
136 northeastern part of Tanzania, where malaria transmission occurs almost throughout the year,
137 full description can be accessed elsewhere [22].

138 **2.3 Ethical approval**

139 The study acquired regulatory approval from the Medical Research Coordination Committee
140 (MRCC) of the National Institute of Medical Research (NIMR), Tanzania. The initial approval based
141 on the protocol was granted on 20th July 2018. The study protocol was amended and the
142 committee reviewed and approved it on 19th March 2019 with validity date on 19th July 2019.
143 However, based on the progress report of July 2019, the ethical clearance committee granted
144 study extension until 20th July 2020. The study approval numbers were
145 NIMR/HQ/R.8a/Vol.IX/2818 and NIMR/HQ/R.8c/Vol.I/668 (for amendment) also
146 NIMR/HQ/R.8c/Vol.I/1276 for ethical clearance extension.

147 **2.4 Study procedures**

148 During the baseline phase, pupils' age, sex, level of education (grade in school), and residential
149 address were recorded in case report forms after consent was granted. Given that participants
150 were children, written informed consent was obtained from children' parents. Children aged 11
151 or older were asked to assent. Further participants' information and household characteristics
152 were inquired from the parents when the study team visited homes to capture satellite locations
153 using the Global Positioning System (GPS) and socioeconomic evaluation.

154 **2.4.1 Intervention**

155 During the intervention, the treatment was either dihydroartemisinin-piperazine (DP) or
156 Artesunate amodiaquine (ASAQ). These drugs have no plausible causal relation to the nutritional
157 status except when there is malaria infection as an intermediate variable. The malaria
158 prevention dosage was given for three days in a directly observed manner, that is, by a study
159 nurse and a trained teacher who would provide the drugs on subsequent days. Another tablet
160 was given and documented when a child vomited within 30 minutes after ingesting a pill.
161 Tanzania's national malaria treatment and diagnostic guideline
162 [23] considers DP and ASAQ as the alternative to first-line Artemether Lumefantrine (ALU) in
163 treating uncomplicated malaria. In the case of malaria-confirmed illness, all children were
164 treated using ALU except on the trial drugs dispensing days when those on DP and ASAQ
165 groups were kept on the same drugsto treat uncomplicated malaria. The national guideline was
166 followed in managing severe malaria [23]. Details on manufacturers' instructions for these drugs,

167 reporting, and handling of severe adverse events (SAE), and the laboratory procedures of
168 malaria parasite investigation were described elsewhere [22].

169 **2.4.2 Outcome**

170 The body weight and height that were measured during the trial were used to quantify
171 nutritional status. A standard stadiometer and a weighing scale were used for measurements.
172 The tools were calibrated by a trained staff before and after use to minimize measurement
173 errors. The weight-for-age, height-for-age, and body mass index (BMI)-for-age Z-scores (WAZ and
174 HAZ, ZBMI respectively) were calculated and used to classify the nutritional status. The BMI was
175 first calculated as;

$$176 \quad \text{BMI} = \text{weight in kilograms}/(\text{height in meters})^2$$

177 and the respective anthropometric index Z-scores were calculated using the 'egen' STATA
178 function as described elsewhere [24, 25]. These Z-scores are the international standard for
179 growth measurements derived by comparing individual growth measurements versus growth
180 data from the reference or normal population, adjusted for age and sex. The standard deviations
181 are normally categorized based on clinical relevance; <-3SD (severely underweight, severely
182 stunted, severely thin), <-2SD to -3SD (underweight, stunted, thin), -2SD to +2SD (normal
183 nutritional status), >+2SD to +3SD (overweight), and >+3SD (Obese) [26]. According to the
184 WHO, WAZ nutritional index can be used up to the age of 10 years [26]. HAZ can be used from

185 birth through the adolescent period, and ZBMI Z-score is not recommended for the age of 2
186 years and below. The exposure-outcome relationship has been summarized in Figure 1 using
187 Directed-Acyclic Graphs (DAGs).

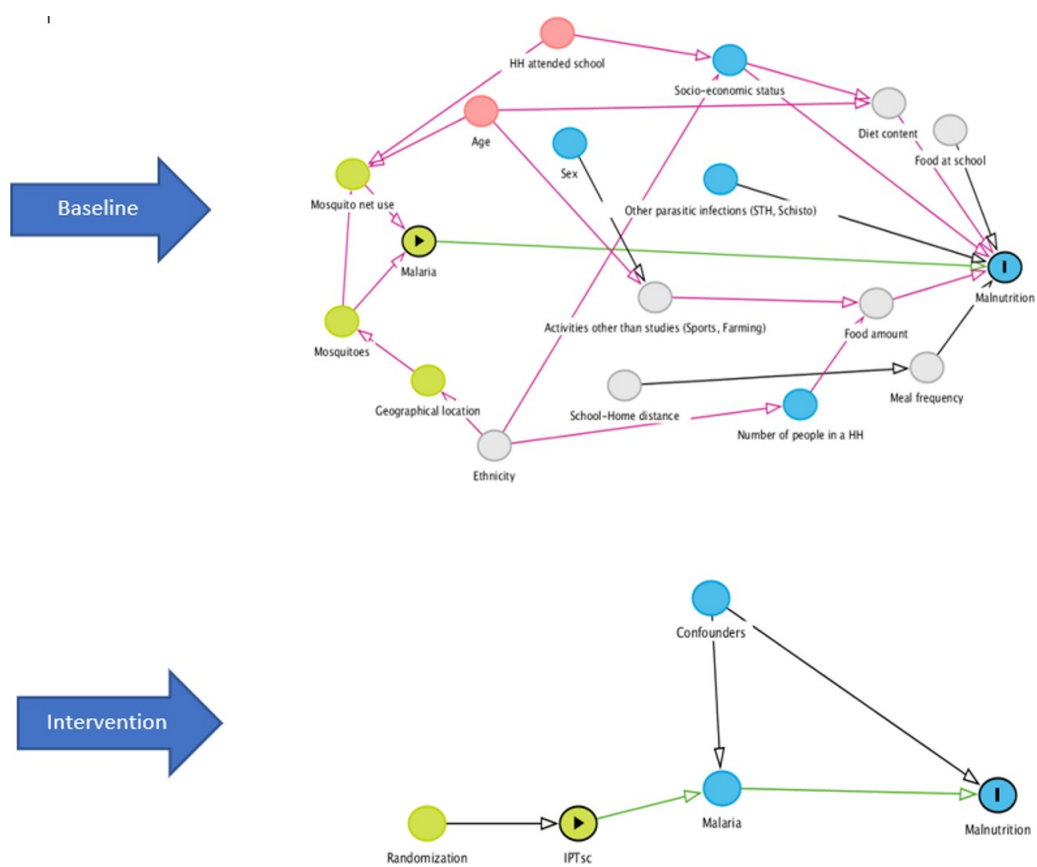
188 **2.5 Statistical Analysis**

189 In this study, we analyzed baseline and longitudinal data that were collected from the same study
190 participants. The methods of analysis were selected based on the nature of the data and the
191 outcome variables of interest. Weight and height were summarized as median and categorical data
192 were reported in proportions. Logistic regression and linear mixed models were applied in the
193 data analysis to determine associations and the impact of anti-malaria prophylaxis on the
194 nutritional status of children.

195 **2.5.1 Logistic regression**

196 Both univariable and multi-variable logistic regressions were used to determine the association
197 between malaria and other risk factors with the nutritional indices. Univariable logistic regression
198 was fitted to investigate the effect of a single covariate on causing underweight, stunting, or
199 thinness status. For inclusion in the multivariable logistic model, covariates that had a p-value
200 <0.25 were included as proposed by Hosmer and Lemeshow [27]. Multi-collinearity was checked
201 using a generalized inflation factor (GVIF), and backward logistic regression was performed to
202 build a parsimonious model. GVIF values were approximately 1 for all included variables,
203 suggestive of no collinearity. In the process, a variable with a p-value greater than the

204 significance level of 5% was dropped, and models were compared using a likelihood ratio test at
 205 each stage. A goodness of fit was checked using the Hosmer-Lemeshow goodness of fit test.



206
 207 Figure 1: The Directed-Acyclic Graphs (DAGs) showing the exposure-outcome relationship for both
 208 baseline and interventional phase of our study.

209 In addition, the attributable fraction (AF) (also known as attributable risk proportion (ARP))
 210 was estimated for the variables that remained statistically significant in the adjusted analysis.
 211 By definition, AF is a measure that quantifies the proportion of the disease burden among
 212 exposed people that is caused by the exposure. We estimated AF from the logistic regression

213 models as suggested by Greenland and Drescher [28, 29]. In the analysis of baseline data where
214 malaria was an exposure of interest, AF was the proportion of prevalent underweight, stunting, or
215 thinness that could be attributed to the malaria infection.

216 **2.5.2 Linear mixed model**

217 In the analysis of longitudinal data, the intention-to-treat approach was implemented to evaluate
218 the impact of anti-malarial treatment on nutritional status. Since the weight, height, and BMI
219 measurements were repeated over time, the observations within each individual were assumed
220 to be correlated. Such correlation violates the independence assumption of the classic linear
221 model. To incorporate correlation within individuals and variation within and between children
222 and schools, the linear mixed model was used in the analysis. The child identification number
223 “child ID” and the “school “ were added as random effects to account for within-child variability
224 due to repeated measurements and between-school variability. The correlation between children
225 who live in the same households and variation between households was also interesting to study.
226 However, we could not match children to their respective households and this could not be
227 studied. This model formula was summarized in the following equation, which applies to all
228 outcome parameters (weight, height, and BMI).

$$229 \quad Y_i = X_i\beta_i + Z_i b_i + \epsilon_i$$

230 Where;

$$231 \quad b_i \sim N(0, D)$$

232 $\epsilon_i \sim N(0, \sigma^2)$

233 $b_{1i}, \dots, b_{ni}, \epsilon_{1i}, \dots, \epsilon_{ni}$ are independent

234 $Y_i = n_i$ -dimensional vector for subject i , $1 \leq i \leq N$, where N is the number of subjects

235 X_i and Z_i are $(n_i \times p)$ and $(n_i \times q)$ dimensional matrices of known covariates.

236 β is the p -dimensional vector containing the fixed effects

237 b_i is the q -dimensional vector containing the random effects, and

238 ϵ_i is the n_i -dimensional vector containing residual components, and

239 D is the general $(q \times q)$ covariance matrix.

240 A study sample represents a population from which it was drawn; therefore, the
241 distributional assumption was made for the random effects ($b_i \sim N(0, D)$, $\epsilon_i \sim N(0, \sigma^2)$) with
242 the covariance matrix D assumed to be unstructured. Variance components of random effects b_i
243 (diagonal elements of matrix D) measure the variability of longitudinal growth trajectories
244 between individuals that are unexplained by covariates. The variability of repeated
245 measurements within individual study participants was measured by the variance of residual
246 component ϵ_i .

247 In model building, we included the fixed effects of age, age as a quadratic term (age^2), sex, the
248 allocated treatment (study group), SES, and the interaction term of age-study group. The
249 analysis model was decided by comparing the models with (in addition to fixed effects) random
250 intercept and slope against models without random slope using the akaike information criterion
251 (AIC). The model with random intercepts of "child id" and "school" had the lowest AIC value.
252 The quadratic term of age was previously added due to the difference in growth rate that causes

253 a non-linear relationship between weight/height and age. The addition of quadratic term in the
254 model introduced complexity in the interpretation. Its significance was further checked using
255 AIC to compare a model with age and other covariates as described against the model with
256 quadratic term included. The lower AIC was observed in the model that included a quadratic
257 term of age. However, the difference was so small (see Appendix Table 12) that we ignored it
258 and our final analysis model did not include a quadratic term. The estimates obtained from age-
259 study group interaction were the effect sizes due to treatment over time. Assumptions for the
260 linear model were checked by assessing the residual plots and mean of residuals, figures 8 and 9.
261 The statistical inference employed in this analysis based on the restricted maximum likelihood
262 method [30]. These analyses were carried out in R software version 4.2.1 for Windows, and the
263 significance level was 0.05.

264 **2.5.3 Missing data management**

265 Overall data missingness was about 5% during the study. The reason for fewer data
266 missingness was that visits were done on regular schooling days at the respective schools. The
267 missing pattern affected individuals from two schools where scheduled visits were canceled as
268 the government ordered sudden school closure due to covid-19 outbreak. Public activities were
269 resumed within three months and the study visits continued accordingly. The reason for
270 missingness did not relate to observed characteristics or the missing data; hence, missing data
271 completely at random (MCAR) was considered the missing data mechanism. Considering the low
272 rate of missingness and MCAR data missing mechanism, complete case analysis was applied.

273 **3 Results**

274 **3.1 General characteristics of the study population**

275 In February 2019, 2628 children aged 0-15 years were recruited from 958 households for
276 socioeconomic and demographic assessment. The study focused on children of age 5-15 years;
277 therefore, primary school children were a target source population. 1566 school-age children who
278 met inclusion criteria and signed a consent form were clinically evaluated during the baseline
279 phase of the study. Among them, 826 (53%) were male, and 740 (47%) were female children. The
280 children's age ranged from 5 to 15 years, with the median age being 9 years. The weight and
281 height of all children were measured during the baseline data collection, and their median values
282 were 23Kgs and 128.5cm, respectively. The mean BMI was $14.98(2.49)kg/m^2$. 1566 children were
283 further assigned to three treatment groups of two anti-malarial drugs and a standard care or
284 control group. The balanced three study groups were Dihydroartemisinin-Piperaquine (DP)
285 (n=526), Artesunate-Amodiaquine (ASAQ) (n=527), and Standard Care or control group (n=513).
286 The average weight gains during the study period for the DP, ASAQ, and Standard Care treatment
287 groups were 5kg, 5.1kg, and 5.2kg, respectively. For the children's height, the net gains were
288 6cm, 6.1cm, and 6.5cm in the DP, ASAQ, and Standard Care treatment groups, respectively.

289 **3.2 Distribution of participants' characteristics and their nutritional outcomes**

290 The extreme categories of weight-for-age (severely underweight), height-for-age (severely
291 stunted), BMI-for-age (severely thin), and obesity were in a very small (<5%) proportion in
292 this study population. In this analysis, we used two categories, that is, WAZ <-2 (underweight)

293 and WAZ ≥ -2 (normal weight). 246 (23%) of 1064 children of age 5 to 10 years were either
294 underweight or severely underweight. 327 (21%) of all study participants were stunted, and 439
295 (28%) were either thin or severely thin. Among 1566 children, 806 (51%) belong to low SES
296 households, 1352 (86%) heads of household (HH) acquired at least primary education, and
297 216 (14%) did not attend school. Regarding infections, 403 (27%) of 1484 who were tested
298 had malaria. 661 (42%) of all children reported a history of malaria in the past month, and 210
299 (13%) used anti-malarial drugs in the previous week. When screened for other parasites, the
300 prevalence of soil-transmitted helminths (STH) and schistosomiasis were 1% and 8%, respectively.
301 Table 1 provides the summary of variables and their distribution proportions.

302 During the intervention, children's weight and height were measured at all visits, and malaria
303 testing was done at baseline, after the first 12 months, and at the 20th month of study. Due to
304 the absence of data for malaria at several scheduled visits, we only compared the point
305 prevalence of nutritional indices and malaria at baseline and after 12 months. The point
306 prevalence of malaria and nutritional status according to treatment allocation were summarized
307 in Table 2 and Figure 2. Generally, malaria prevalence was notably low after 12 months of
308 intervention in groups that received treatments compared to the standard care group. The
309 underweight, stunted, and thin status among children did not largely vary from baseline to the
310 12th-month visit.

311

Table 1: Baseline characteristics of study participants

312

Predictor Variable	Low WAZ	Normal WAZ	Low HAZ	Normal HAZ	Low BMI	Normal BMI
	n(%)	n(%)	n(%)	n(%)	n(%)	n(%)
Total	246(23)	818(77)	327(21)	1239(79)	439(28)	1127(72)
Gender						
Male	131 (24)	420 (76)	194 (23)	634 (77)	227 (52)	600 (53)
Female	115 (22)	398 (78)	133 (18)	605 (82)	212 (48)	527 (47)
Socio-Economic Status						
Low	143 (27)	392 (73)	180 (22)	625 (78)	233 (53)	554 (51)
High	103 (19)	426 (81)	147 (19)	614 (81)	206 (47)	573 (49)
Parents' Education Level						
None	56 (26)	160 (74)	50 (23)	166 (77)	49 (23)	167 (77)
Primary or above	374 (28)	978 (72)	277 (20)	1073 (80)	390 (29)	960 (71)
Infections						
Malaria						
Yes	61 (25)	187 (75)	113 (28)	290 (72)	105 (24)	298 (26)
No	175 (23)	590 (77)	190 (18)	891 (82)	318 (72)	763 (68)
Malaria for the past month						
Yes	111 (25)	335 (75)	126 (19)	533 (81)	209 (48)	452 (40)
No	135 (22)	483 (78)	201 (22)	706 (78)	230 (52)	675 (60)
Anti-malaria for the past week						
Yes	38 (26)	108 (74)	38 (18)	170 (82)	62 (14)	146 (13)
No	208 (23)	710 (77)	289 (21)	1069 (79)	377 (86)	981 (87)
Soil-Transmitted Helminths (STH)						
Yes	3 (25)	9 (75)	4 (29)	12 (71)	3 (0.6)	13 (1)
No	239 (23)	791 (77)	316 (21)	1201 (79)	426 (97)	1091 (97)
Received STH medication for the past 6 months						
Yes	120 (23)	406 (77)	205 (24)	663 (76)	222 (51)	646 (57)
No	126 (23)	412 (77)	122 (17)	576 (83)	217 (49)	481 (43)
Schistosomiasis						
Yes	20 (23)	67 (77)	36 (27)	96 (73)	30 (7)	98 (9)

No 226 (23) 751 (77) 291 (20) 1143 (80) 396 (90) 1001 (89)

313

Table 2: Trend of malaria infections between study groups during follow-up visits

314

Visit	Treatment	Malaria (%)	Underweight	Stunted (%)	Thin (%)
1	DP	28.2	27.8	20.9	28.4
4	DP	12	28.8	24.8	25.6
6	DP	28	22.4	26.8	6.9
1	ASAQ	24.7	29.5	21.3	30.9
4	ASAQ	16.1	32.3	21.8	27.4
6	ASAQ	27.4	24.7	29.4	7.6
1	Standard Care	28.7	26.2	13	26.2
4	Standard Care	33.3	21.9	13.2	25.4
6	Standard Care	28.2	20	23.7	6.3

315

DP= dihydroartemisinin-piperaquine, ASAQ=artesunate-amodiaquine

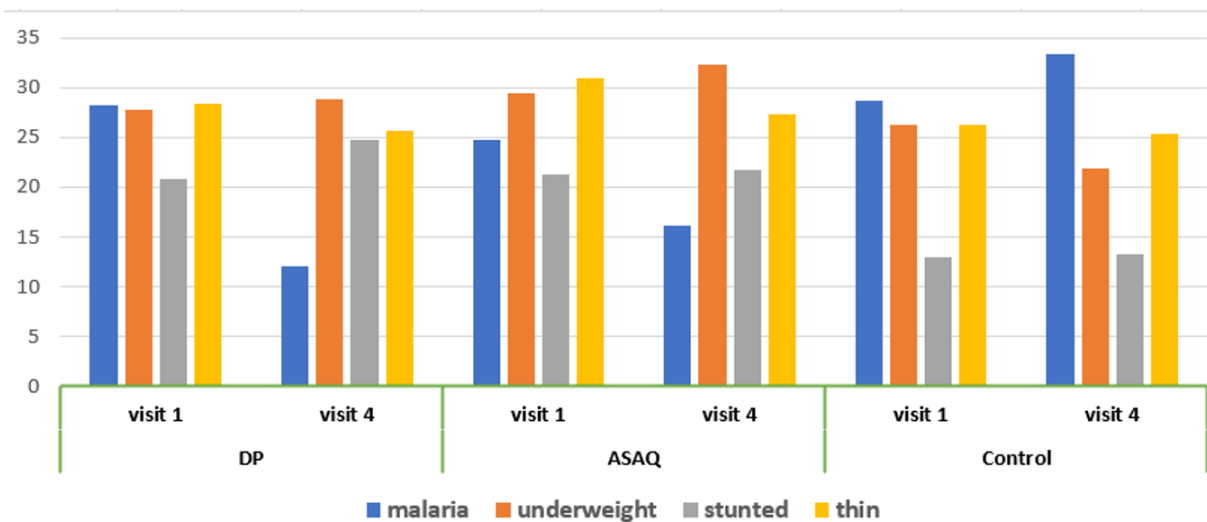


Figure 2: Trend of malaria and nutritional status before and after intervention

3.3 Malaria and Other Risk Factors of Malnutrition in School-age Children

3.3.1 Malaria and other risk factors of being underweight (WAZ < -2) in school-age children

Among children diagnosed with malaria parasites, 61 (25%) of 248 were either underweight or severely underweight (Table 1). Table 2 summarizes the results of risk factors of being underweight from both univariable and multivariable logistic regression analysis. In univariable logistic regression, children from low SES households had 1.5 times higher odds (95% CI= [1.13, 2.01], P=0.005) of being underweight than the high SES category. The association between underweight status and low SES remained statistically significant even in the adjusted analysis (95% CI= [1.13, 2.01], P=0.006).

3.3.2 Malaria and other risk factors of stunting (HAZ < -2) in school-age children

113 (28%) of all children with malaria were stunted (Table 1). In univariable logistic regression (Table 4), the odds of being stunted in the male sex were 1.4 times (OR=1.40, 95%

330 CI=[1.09, 1.79], P=0.008) higher compared to females. Children diagnosed with malaria had about
 331 1.6 times higher odds of being stunted compared to those who did not have malaria (OR=1.55,
 332 95% CI=[1.55, 1.88], P<0.001). When adjusted for “sex” in the multivariable logistic regression,
 333 children with malaria infection had 78% higher odds (OR=1.78, 95% CI=[1.36, 2.33], P<0.001) of
 334 stunting compared to those who did not have malaria. Malaria was attributed to stunting by
 335 37% in this study population.

336 Table 3: Risk factors of being underweight (WAZ<-2) in a malaria endemic region among school-age children

Variable ^a		Crude OR	95% CI	p-value	Adjusted OR ^b	95% CI	p-value	ARP
Sex	Male	1.07	0.81, 1.43	0.622				
	Female	Ref						
Socio-Economic Status	Low	1.50	1.13, 2.01	0.005	1.50	1.13, 2.01	0.006*	0.27
	High	Ref						
Number of people in a household		1.0	0.93, 1.07	0.988				
Head of HH attended school	Yes	0.92	0.62, 1.40	0.699				
	No	Ref						
Malaria parasitemia	Yes	0.99	0.76, 1.27	0.929				
	No	Ref						
Malaria in the past Month	Yes	1.19	0.89, 1.59	0.235	1.20	0.90, 1.59	0.226	
	No	Ref						
Soil-Transmitted Helminths	Yes	0.85	0.49, 1.34	0.497				
	No	Ref						
Schistosomiasis	Yes	1.00	0.70, 1.39	0.990				
	No	Ref						

337 OR=Odds Ratio, CI=Confidence Interval, HH=Head of Household, Ref= Reference category, * significant p-value, ARP=
 338 Attributable Risk Proportion. ^aVariables were selected based on the previous literature and pre-analysis Directed-Acyclic Graphs
 339 (DAGs) Figure 1. ^bResults are adjusted OR from the multivariable logistic regression model.

341 Table 4: Risk factors of stunting (HAZ<-2) in a malaria endemic region among school-age children

342

Variable ^a		Crude OR	95% CI	p-value	Adjusted OR ^b	95% CI	p-value	ARP
Sex	Male	1.40	1.09, 1.79	0.008	1.36	1.06, 1.74	0.017*	0.23
	Female	Ref						
Socio-Economic Status	Low	1.20	0.94, 1.54	0.141				
	High	Ref						
Number of people in a household		1.03	0.97, 1.09	0.289				
Head of HH attended school	Yes	0.86	0.61, 1.21	0.385				
	No	Ref						
Malaria parasitemia	Yes	1.55	1.28, 1.88	<0.001	1.78	1.36, 2.33	<0.001*	0.37
	No	Ref						
Malaria in the past Month	Yes	0.75	0.40, 1.34	0.134				
	No	Ref						
Soil-Transmitted Helminths	Yes	1.04	0.68, 1.51	0.853				
	No	Ref						
Schistosomiasis	Yes	1.13	0.85, 1.49	0.396				
	No	Ref						

343 OR=Odds Ratio, CI=Confidence Interval, HH=Head of Household, Ref= Reference category, * significant p-value,

344 ARP= Attributable Risk Proportion. ^aVariables were selected based on the previous literature and pre-analysis Directed-Acyclic

345 Graphs(DAGs) Figure 1. ^bResults are adjusted OR from the multivariable logistic regression model.

346 **3.3.3 Malaria and other risk factors of being thin (ZBMI< -2) in school-age children**

347 Among 403 children who had malaria, 105 (26%) were thin as they were in a category of less than
 348 negative 2 BMI Z-score (Table 1). The effect sizes for the association between thinness and the
 349 risk factors are provided in Table 5. The results of univariable logistic regression showed that the
 350 odds of being thin were 36% higher (OR=1.36, 95% CI=[1.09, 1.70], P<0.001) in children who
 351 reported a history of malaria illness in the past month. In the adjusted analysis, the
 352 association between history of malaria infection and thinness remained significant (AOR=1.37,
 353 95% CI=[1.10, 1.71], P=0.006). The association between head of household education level and
 354 thinness in children was not significant in both univariable and multivariable logistic regression.

355 Table 5: Risk factors of being thin (ZBMI< -2) in a malaria endemic region among school-age
 356 children

Variable ^a		Crude OR	95% CI	p-value	Adjusted OR ^b	95% CI	p-value	ARP
Sex	Male	0.94	0.75, 1.17	0.593				
	Female	Ref						
Socio-Economic Status	Low	1.10	0.88, 1.37	0.414				
	High	Ref						
Number of people in a household		0.99	0.93, 1.04	0.597				
Head of HH attended school	Yes	1.39	0.99, 1.96	0.062	1.40	1.00, 1.99	0.052	
	No	Ref						
Malaria parasitemia	Yes	0.80	0.65, 0.97	0.205				
	No	Ref						
Malaria in the past Month	Yes	1.36	1.09, 1.70	<0.001	1.37	1.10, 1.71	0.006*	0.20
	No	Ref						
Soil-Transmitted Helminths	Yes	1.00	0.68, 1.42	0.999				
	No	Ref						

Schistosomiasis	Yes	0.94	0.17, 1.22	0.641
	No	Ref		

OR=Odds Ratio, CI=Confidence Interval, HH=Head of Household, Ref= Reference category, * significant p-value, ARP=

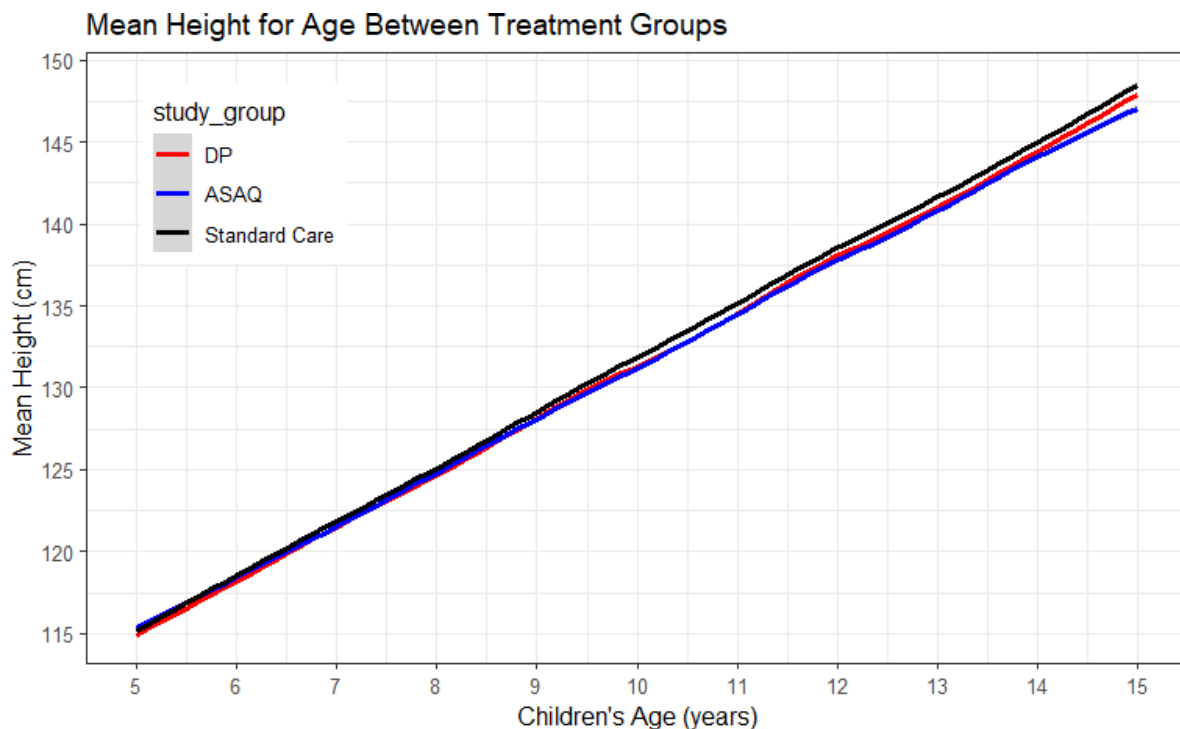
Attributable Risk Proportion. ^aVariables were selected based on the previous literature and pre-analysis Directed-Acyclic Graphs

(DAGs) Figure 1. ^bResults are adjusted OR from the multivariable logistic regression model.

3.4 The trend of weight, height, and body mass index (BMI) during and after the trial

3.4.1 The average trend of children's height, weight, and BMI

The children's weight, height, and BMI were measured prior to starting the 12 months intervention. It was thereafter measured during each follow-up visit, including the eight months post-trial. Figure 3 shows the evolution of mean height predicted from the linear mixed model across age. Overall, the children's height increased almost linearly with increasing age. Visually, there is no significant difference in the trend of average height for age between the study groups. Due to similarities between children randomized to different treatment groups, their mean height data points overlap, markedly in the 5 to 10 years age group. The plots for the weight (Figure 6), BMI (Figure 7), and the trend of height-for-age grouped by sex (Figure 5) are available in the appendix.



372

373

Figure 3: The trend of mean height-for-age of school-age children grouped by treatment

374

375

3.4.2 The individual profile for the children's height, weight, and BMI

376

Change in children's height, weight, and BMI at the individual level was explored using profile plots. A

377

random sample of 70 children was drawn and their individual plots were plotted in Figure 4. The plots

378

showed minimum data imbalance as there was not much noticeable discontinuation of individual lines at

379

subsequent data points, which signifies minimum missingness in the data. Following individual profile

380

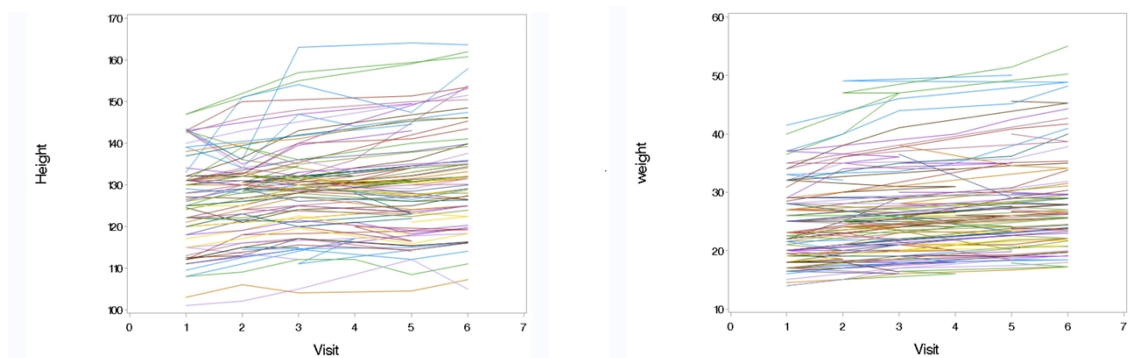
lines, the data points of many subjects inconsistently change from lower to higher values and vice versa.

381

Such a pattern of changes signifies high within-child variability among individuals as their height,

382

weight, and BMI evolved with time. High variability between children was also seen in plots a, b, and c.

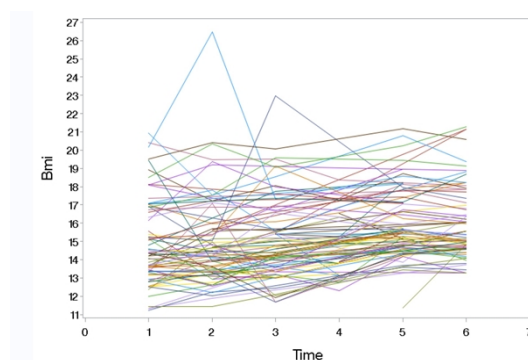


383

384

(a) Height

(b) Weight



385

386

(c) bmi

387

Figure 4: Individual profile plots for 70 randomly selected children

388

3.4.3 The impact of malaria intermittent preventive therapy on weight, height, and BMI

389

The impact of malaria preventive treatment on growth indices was investigated using the linear

390

mixed model (LMM). Different models with and without random effects were compared using

391

AIC and the results are presented in Appendix Table 13. The model with a “child ID” and

392

“school” as random intercept had the smallest AIC, and was therefore selected as the final

393

model.

394 Our analysis that investigated random effects of individual "child id" and "school" revealed that
395 between-children and within-child variability were high, whereas between-schools variability was
396 minimal for all growth indices. Quantitatively, the between-children (child id) variance (Tables 6,
397 7, and 8) were 18.06 (81%), 25.95 (61.4%), and 9.82 (26.4%) for weight, height, and BMI,
398 respectively. The between-schools variance was less than 1% for weight, height, and BMI.
399 Repeated measurements for each study participant also explained a large portion of variance
400 as estimated by the residual component of the LMM. The within-child variance in weight,
401 height, and BMI were 4.1 (18.4%), 16.07 (38%), and 27.2 (73.2%), respectively. The proportions
402 described here are relevant to the individual profile plots described in the previous section 3.4.2.
403 The effect of malaria preventive therapy (tables 6, 7, and 8) on weight, height, and BMI was
404 evaluated by including the treatment allocation as a fixed effect covariate (that provided the
405 estimates for comparison at baseline), and the interaction term of treatment allocation and age
406 (that provided estimates of changing slope over time). At baseline, the treatment was not
407 consumed by the participants; therefore, the latter reflects the true treatment effect that was
408 studied. Adjusted for other covariates in the model, the means of weight, height, and BMI in DP
409 and ASAQ treatment groups were not significantly different from that of the control group at
410 baseline. During the intervention, change in mean weight, height, and BMI over time as estimated
411 from age-study group interaction was not significantly different in DP and ASAQ groups compared
412 to the control group. A unit change in age increased weight, height, and BMI by 2.2 units (p-
413 value
414 <0.001), 3.3 units (p-value <0.001), and 0.5 units (p-value <0.001). The height and weight in
415 female children were higher compared to that of male children by 1 unit (p-value <0.001) and

416 0.8 unit (p-value
417 <0.001), respectively. Compared to males, being female did not significantly affect the BMI in our
418 study. The change in weight, height, and BMI was not significantly different in children from low
419 SES households compared to the high SES category.
420 When children were followed for 8 months after the intervention, there was no significant
421 difference in weight, height, or BMI based on their former treatment allocation. The finding is
422 intuitively reasonable because there was no actual treatment given to the participants. However,
423 the effect of age on the growth parameters remained statistically significant even when
424 treatments were stopped.

425 Table 6: LMM results for weight during the trial
426

Random effects		Variance			
Child id (intercept)		18.0647			
School (intercept)		0.1230			
Residual		4.1008			

Fixed effect	estimate	sd	df	t value	p value
Intercept	5.4418	0.7495	945	7.26	<.0001*
age	2.1758	0.07676	1563	28.34	<.0001*
sex: female	0.7867	0.2248	1558	3.50	0.0005*
sex: male	Ref				
study_group: DP	-1.4332	1.0137	1562	-1.41	0.1576
study_group: ASAQ	-0.2494	1.0272	1564	-0.24	0.8082
study_group: standard care	Ref				

ses: high	0.2704	0.2240	1559	1.21	0.2277
ses: low	Ref				
age*DP	0.1250	0.1072	1559	1.17	0.2438
age*ASAQ	0.002238	0.1082	1561	0.02	0.9835
<hr/>					
age*standard care	Ref				

427 DP= Dihydroartemisinin-Piperaquine, ASAQ=Artesunate-Amodiaquine, BMI=Body Mass Index, *significant p-value, SES=
428 Socio-Economic Status, Ref= Reference category.

Table 7: LMM results for height during trial

429

Random effects		Variance			
Child id (intercept)		25.9479			
School (intercept)		0.2607			
Residual		16.0669			
Fixed effect	estimate	sd	df	t value	p-value
Intercept	97.8322	0.9579	743	102.13	<.0001*
age	3.3255	0.09759	1546	34.08	<.0001*
sex: female	1.0031	0.2855	1536	3.51	0.0005*
sex: male	Ref				
study_group: DP	-0.2338	1.2890	1545	-0.18	0.8561
study_group: ASAQ	0.2858	1.3068	1549	0.22	0.8269
study_group: standard care	Ref				
ses: high	0.5509	0.2846	1537	1.94	0.0531
ses: low	Ref				
age*DP	-0.02532	0.1363	1540	-0.19	0.8526

age*ASAQ -0.08752 0.1376 1543 -0.64 0.5247

age*standard care Ref

430 DP= Dihydroartemisinin-Piperaquine, ASAQ=Artesunate-Amodiaquine, BMI=Body Mass Index, *significant p-value, SES=

431 Socio-Economic Status, Ref= Reference category.

432
433
434 Table 8: LMM results for BMI during trial

435

Random effects		Variance			
Child id (intercept)		9.8184			
School (intercept)		0.1198			
Residual		27.2050			
Fixed effects	estimate	sd	df	t value	p-value
Intercept	10.7147	0.7420	654	14.44	<.0001*
age	0.5034	0.07588	968	6.63	<.0001*
sex: female	-0.02875	0.2214	949	-0.13	0.8967
sex: male	Ref				
study_group: DP	-0.7717	1.0023	965	-0.77	0.4415
study_group: ASAQ	0.9352	1.0174	970	0.92	0.3582
study_group: standard care	Ref				
ses: high	-0.08942	0.2208	952	-0.41	0.6855
ses: low	Ref				
age*DP	0.07478	0.1058	956	0.71	0.4799
age*ASAQ	-0.07621	0.1069	962	-0.71	0.4762

age*standard care

Ref

436

DP= Dihydroartemisinin-Piperaquine, ASAQ=Artesunate-Amodiaquine, BMI=Body Mass Index, *significant p-value, SES=

437

Socio-Economic Status, Ref= Reference category.

438 **4 Discussion**

439 Both malaria and malnutrition in children impose a burden of public health importance in LMIC
440 in tropical regions. From the baseline data of our study, we found a malaria prevalence of 27%.
441 42% of children reported a history of malaria, and 13% used anti-malaria drugs in the past week.
442 The prevalence of other parasitic infections, soil-transmitted helminths (STH), and
443 schistosomiasis were 1% and 8%, respectively. For the nutritional status, 23% of 5-10 years old
444 children were underweight (WAZ<-2), 21% of all children were stunted (HAZ<-2), and 28% were
445 thin (ZBMI <-2). Most studies on malaria and malnutrition were conducted in children aged years
446 and below, and one-third of children had at least one form of malnutrition in Tanzania [31]. In
447 Nepal, 25.7% of adolescents were malnourished, and 21.8% were underweight [32]. A study
448 conducted in Nigeria found malnutrition prevalence of 22% underweight, 37% stunting, and 6.9%
449 wasted [33].

450 Among children diagnosed with malaria, 25% of 5-10 years old children were underweight,
451 and 28% of all children with malaria were stunted. While the malaria-malnutrition interaction
452 has been observed in disease-endemic regions, it is difficult to establish which precedes the
453 other [13]. In our study, we hypothesized that malaria infection (prolonged asymptomatic
454 parasitemia in the malaria endemic region) poses a risk for malnutrition in children. However,
455 most malaria-malnutrition studies investigated this phenomenon in children of age five years and
456 below, with a perspective that malnutrition is the underlying risk for malaria since poor nutritional
457 status leads to weak immunity [14, 34]. Malaria was significantly associated with stunting in our

458 study. This finding is consistent with similar studies conducted in ≤ 5 years children that
459 showed a significant association between malaria and being stunted. A cohort study that
460 included a wide range of age (1 month to 14 years) in the Brazilian Amazon reported that
461 multiple malaria episodes significantly negatively affected the linear growth of children of age 5
462 to 10 years [16]. Other observational studies from Sub-Saharan Africa in ≤ 5 years children
463 reported a significant association [15, 35]. Stunting is a chronic condition that develops when an
464 individual is exposed over a reasonably long time. Given that our data were cross-sectionally
465 collected, the significant association between malaria infection diagnosed at one-time
466 measurement is not biologically plausible. The finding rather reflects that children with recent
467 malaria infection had previous recurrent infections since this study area is a stable malaria
468 endemic region. During their life cycle, *Plasmodium falciparum* cause destruction of red blood
469 cells leading to anemia. The subclinical hypoxic condition due to anemia inhibits insulin-growth
470 factor-I, the hormone that plays a vital role in growth [36]. Such slowed growth experience
471 predisposes children to long-term consequences of poor height gain depending on the level and
472 duration of exposure.

473 We found an association between male sex and stunting as shown by higher odds and a p-value
474 lower than 5% significance level. The finding aligns with previous studies from children under five
475 that the male sex was associated with at least one form of malnutrition [37, 38, 39]. We
476 identified that children from low socio-economic status (SES) households had a statistically
477 significant higher odds of being underweight. Prior studies also showed a significant association

478 between low SES and underweight [31, 33]. Unlike underweight, stunting had no significant
479 association with low SES [32, 33]. This insignificance implies that there could be factors that
480 determine nutritional status in older children (school-age) that were not
481 explored in the scope of this study, given that it was primarily designed for other purposes.
482 Further nutritional studies need to investigate factors related to the life of a school-age child and
483 adolescents as described by Scaglioni et al. in 2018 [40]; for example, distance from home to
484 school, availability of food in a school setting, amount of food, meal frequency, and daily
485 activities other than studies. Using a qualitative design that enrolls parents, teachers, and school
486 children would be more informative.

487 Overall, an increase in weight and height in all participants was expected since age (a time factor)
488 and sex are known to have a great influence on children's growth. In our analysis using a linear
489 mixed model, the effect estimates of DP and ASAQ on weight, height, and BMI were small and
490 not statistically significant. Previous trials using anti-malarial drugs aimed at the effect of
491 treatment in minimizing parasitemia, improvement of hemoglobin levels, and cognitive
492 performance [4, 5, 19, 20]. The impact of treatment on nutritional status was reported rarely.
493 Interventional studies that included infants and preschool children were conducted in Kenya
494 [1997] and Senegal (2011), and they reported significant weight gain in treatment groups
495 compared with the control group [41, 42]. The previous studies that reported significant weight
496 and height gains in treatment groups included preschool children whose diet content and eating
497 behaviors differ from the age group we studied. Energy requirements for children aged five and

498 above are high, especially for children who live in low SES settings [43]. In that context, the
499 difference in age-appropriate energy requirements, environment, and daily activities might have
500 influenced the results.

501 Our study had several strengths; First, the use of both cross-sectional and longitudinal designs
502 allowed assessment of risk factors and malaria-malnutrition burden. Knowing the prevalence of
503 malaria at baseline set the ground for the significance of doing the trial using anti-malarial drugs.
504 The longitudinal design was useful for studying causal relationships. Secondly, to the best of our
505 knowledge, this is among the few interventions to report the impact of intermittent preventive
506 therapy for malaria on the nutritional status. This makes it a valuable knowledge source in
507 addition to similar studies that included preschool children. The study does have some
508 limitations. Firstly, we analyzed data that was primarily collected not for the purpose of
509 nutritional assessment. For that reason, some known risk factors for malnutrition were not
510 collected and, therefore, unavailable for analysis. In addition to known risks, it was important to
511 assess other factors relevant to older children and adolescents, as it was shown in the Directed
512 Acyclic Graphs (DAGs), Figure 1. Secondly, a wide range of available literature on the risks of
513 malnutrition based on findings from under five years children who were extensively studied
514 previously. This limits the comparability of information while discussing the findings of our study.
515 Thirdly, the children in grades 6 and 7 were excluded from the study for practical reasons that
516 they were anticipated to complete their school curriculum before the intervention study ended.
517 The exclusion of older children limits the generalizability of results to the population of older

518 children and adolescents. Another limitation was that, despite a significant association between
519 malaria infection and stunting in our study, the conclusion on this causal effect is biologically
520 incorrect because the parasitemia detected was measured only once at baseline. Restriction in
521 height gain due to malaria infection can only be concluded given the exposure is stable for a
522 considerably long time. Alternatively, this phenomenon could be investigated from a cohort
523 design that takes into account the frequency of infections encountered by individual children.
524 Lastly, we could not identify children who lived in the same household; therefore, clustering
525 between households and variability between children from the same households could not be
526 addressed in the analysis as a random effect.

527 **5 Conclusion**

528 The double health burden of malaria and malnutrition exists in almost equal proportion in the
529 setting where we conducted the study. Factors known to be risks for malnutrition (low SES and
530 Head of household education level) in under five years children were not significant in children
531 aged ≥ 10 years. Further studies need to evaluate other factors relevant to the age group. For
532 example, distance from home to school, availability of food in a school setting, amount of food,
533 meal frequency, and daily activities other than studies. Using a qualitative design that enrolls
534 parents, teachers, and school children would be more informative. The use of anti-malarial drugs
535 for prevention purpose does not necessarily improve nutritional status. Combined with the
536 previous findings suggestive of no established causal association between malaria infection and

537 malnutrition, public health interventions need an integrated approach to address the two co-
538 existing problems. Intuitively, malnutrition cannot be treated using anti-malarial drugs, and good
539 nutritional status does not prevent malaria infection. The latter improves immunity to better
540 fight infections, including malaria. Therefore, both malaria control and nutrition improvement
541 programs should be implemented to achieve the intended health effect. The majority of the
542 community members are peasants who produce food products for their families. Public health
543 agencies should reinforce nutritional programs by collaborating with local communities to ensure
544 food availability in schools and sustainable nutritional education to the local community
545 members.

546 **Acknowledgement**

547 I would like to express my sincere gratitude to the promotor of this study Prof. Jean-Pierre Van
548 geertruyden, and Geoffrey Makenga for their continued support throughout the development
549 of this report. I would also like to thank Prof. Steven Abrams and Jackline Mbishi for their
550 assistance in statistical analysis. In a special way, I am grateful to the VLIROUS scholarship for
551 providing financial support for this master's program. These thanks are extended to the
552 parties that helped in the acquisition of the data as mentioned in the other article [6]; the
553 Muheza District officials; the District Medical Officer, district school health and NTD
554 coordinators, schoolteachers, parents and guardians of children and the participants for their
555 collaboration and support in the conduct of the study. Authors acknowledge stakeholders for
556 school health program: The Ministry of Health, (MoH); the Ministry of Education, Science and

557 Technology; the President's Office- Regional Administration and Local Government (PO-
558 RALG); the National Malaria Control Programme (NMCP) and the National Neglected Tropical
559 Diseases (NTD) program for their cordial inputs with regard to study implementation and
560 policy. The NIMR Director General and his staff for coordination of the study team and
561 external stakeholders to the school health program. NIMR Tanga center staff for their cordial
562 support during the preparation and implementation of the study. Global Health Institute
563 staff (Universiteit Antwerpen, Belgium) for their administrative and logistical support.

564 **Funding**

565 There was no financial support received from any funding agent for this particular manuscript.
566 The parent study was funded by the Flemish Interuniversity Council (VLIRUOS), Belgium,
567 TEAM initiative, grant number, TZ2017TEA451A102.

568 **Competing Interests**

569 We declare no competing interest regarding this piece of work.

570 **Data availability and sharing**

571 The de-identified data will be available upon request. The approval for accessibility will be
572 granted by the National Institute for Medical Research, Tanzania. This will involve signing data
573 transfer agreement.

574 **References**

- 575 [1] WHO. World Malaria report; 2017. [http://apps.who.int/iris/bitstream/handle/10665/](http://apps.who.int/iris/bitstream/handle/10665/259492/9789241565523-eng.pdf;jsessionid=7E8CAE9253ECC329D50148B96CC80DAF?sequence=1)
576 [259492/9789241565523-eng.pdf;jsessionid=7E8CAE9253ECC329D50148B96CC80DAF?sequence= 1.](http://apps.who.int/iris/bitstream/handle/10665/259492/9789241565523-eng.pdf;jsessionid=7E8CAE9253ECC329D50148B96CC80DAF?sequence=1)
- 577 [2] WHO. World malaria report; 2020. [https://www.who.int/publications/i/item/9789240015791.](https://www.who.int/publications/i/item/9789240015791)
- 578 [3] WHO. World malaria report; 2021. [https://www.who.int/teams/global-malaria-programme/](https://www.who.int/teams/global-malaria-programme/reports/world-malaria-report-2021#:~:text=According%20to%20WHO's%20latest%20World,)
579 [reports/world-malaria-report-2021#:~:text=According%20to%20WHO's%20latest%20World,](https://www.who.int/teams/global-malaria-programme/reports/world-malaria-report-2021#:~:text=According%20to%20WHO's%20latest%20World,)
580 [and%2069%20000%20more%20deaths.](https://www.who.int/teams/global-malaria-programme/reports/world-malaria-report-2021#:~:text=According%20to%20WHO's%20latest%20World,)
- 581 [4] Nankabirwa JI, Wandera B, Amuge P, Kiwanuka N, Dorsey G, Rosenthal PJ, et al. Impact of
582 intermittent preventive treatment with dihydroartemisinin-piperazine on malaria in Ugandan
583 schoolchildren: a randomized, placebo-controlled trial. *Clinical Infectious Diseases*.
584 2014;58(10):1404-12.
- 585 [5] Mtove G, Mugasa JP, Messenger LA, Malima RC, Mangesho P, Magogo F, et al. The effectiveness
586 of non-pyrethroid insecticide-treated durable wall lining to control malaria in rural Tanzania: study
587 protocol for a two-armed cluster randomized trial. *BMC public health*. 2016;16(1):1-15.
- 588 [6] Makenga G, Baraka V, Francis F, Minja DT, Gesase S, Kyaruzi E, et al. Attributable risk factors for
589 asymptomatic malaria and anaemia and their association with cognitive and psychomotor functions
590 in schoolchildren of north-eastern Tanzania. *Plos one*. 2022;17(5):e0268654.
- 591 [7] Elia M. Defining, recognizing, and reporting malnutrition. *The international journal of lower extremity*
592 *wounds*. 2017;16(4):230-7.
- 593 [8] Christian P, Smith ER. Adolescent undernutrition: global burden, physiology, and nutritional risks.

594 Annals of Nutrition and Metabolism. 2018;72(4):316-28.

595 [9] UNICEF. World malaria report; 2019.

596 <https://data.unicef.org/resources/state-of-the-worlds-children-2019/>.

597 [10] Abarca-Gomez L, Abdeen ZA, Hamid ZA, Abu-Rmeileh NM, Acosta-Cazares B, Acuin C, et al.

598 Worldwide trends in body-mass index, underweight, overweight, and obesity from 1975 to 2016: a

599 pooled analysis of 2416 population-based measurement studies in 128· 9 million children, adolescents,

600 and adults. The lancet. 2017;390(10113):2627-42.

601 [11] Mnkugwe RH, Minzi OS, Kinung'hi SM, Kamuhabwa AA, Aklillu E. Prevalence and correlates of

602 intestinal schistosomiasis infection among school-aged children in North-Western Tanzania. PloS one.

603 2020;15(2):e0228770.

604 [12] Ministry of Health CD, Gender, Elderly and Children (MoHCDGEC) [Tanzania Mainland], Ministry

605 of Health (MoH) [Zanzibar], Tanzania Food and Nutrition Centre (TFNC), National Bureau of Statis-

606 tics (NBS), Office of the Chief Government Statistician (OCGS) [Zanzibar] and UNICEF. Tanzania

- 607 National Nutrition Survey using SMART Methodology (TNNS); 2019. [https://www.usaid.gov/](https://www.usaid.gov/sites/default/files/documents/Copy_of_tagged_Tanzania-Nutrition-Profile.pdf)
608 [sites/default/files/documents/Copy_of_tagged_Tanzania-Nutrition-Profile.pdf](https://www.usaid.gov/sites/default/files/documents/Copy_of_tagged_Tanzania-Nutrition-Profile.pdf).
- 609 [13] Das D, Grais R, Okiro E, Stepniewska K, Mansoor R, Van Der Kam S, et al. Complex interactions
610 between malaria and malnutrition: a systematic literature review. *BMC medicine*. 2018;16(1):1-14.
- 611 [14] Katona P, Katona-Apte J. The interaction between nutrition and infection. *Clinical Infectious*
612 *Diseases*. 2008;46(10):1582-8.
- 613 [15] Sakwe N, Bigoga J, Ngondi J, Njeambosay B, Esemu L, Kouambeng C, et al. Relationship between
614 malaria, anaemia, nutritional and socio-economic status amongst under-ten children, in the North
615 Region of Cameroon: A cross-sectional assessment. *Plos one*. 2019;14(6):e0218442.
- 616 [16] Alexandre MAA, Benzecry SG, Siqueira AM, Vitor-Silva S, Melo GC, Monteiro WM, et al. The asso-
617 ciation between nutritional status and malaria in children from a rural community in the Amazonian
618 region: a longitudinal study. *PLoS neglected tropical diseases*. 2015;9(4):e0003743.
- 619 [17] Wilson AL, Bradley J, Kandeh B, Salami K, D'Alessandro U, Pinder M, et al. Is chronic malnutrition
620 associated with an increase in malaria incidence? A cohort study in children aged under 5 years in
621 rural Gambia. *Parasites & vectors*. 2018;11(1):1-11.
- 622 [18] WHO. World malaria report; 2018. [http://apps.who.int/iris/bitstream/handle/10665/](http://apps.who.int/iris/bitstream/handle/10665/275867/9789241565653-eng.pdf)
623 [275867/9789241565653-eng.pdf](http://apps.who.int/iris/bitstream/handle/10665/275867/9789241565653-eng.pdf).
- 624 [19] Clarke SE, Rouhani S, Diarra S, Saye R, Bamadio M, Jones R, et al. Impact of a malaria intervention
625 package in schools on Plasmodium infection, anaemia and cognitive function in schoolchildren in Mali:
626 a pragmatic cluster-randomised trial. *BMJ global health*. 2017;2(2):e000182.

- 627 [20] Ter Kuile FO, Terlouw DJ, Phillips-Howard PA, Hawley WA, Friedman JF, Kolczak MS, et al. Impact
628 of permethrin-treated bed nets on malaria and all-cause morbidity in young children in an area of
629 intense perennial malaria transmission in western Kenya: cross-sectional survey. *The American*
630 *journal of tropical medicine and hygiene*. 2003;68(4 suppl):100-7.
- 631 [21] Oldenburg CE, Guerin PJ, Berthé F, Grais RF, Isanaka S. Malaria and nutritional status among
632 children with severe acute malnutrition in Niger: a prospective cohort study. *Clinical Infectious*
633 *Diseases*. 2018;67(7):1027-34.
- 634 [22] Makenga G, Baraka V, Francis F, Nakato S, Gesase S, Mtove G, et al. Effectiveness and safety of
635 intermittent preventive treatment for malaria using either dihydroartemisinin-piperazine or
636 artesunate- amodiaquine in reducing malaria related morbidities and improving cognitive ability in
637 school-aged children in Tanzania: A study protocol for a controlled randomised trial. *Contemporary*
638 *Clinical Trials Communications*. 2020;17:100546.
- 639 [23] NATIONAL INSTITUTE OF MALARIA RESEARCH NEW DELHI. Guidelines for Diagnosis and
640 Treatment of Malaria in India; 2018. [https://nvbdcp.gov.in/WriteReadData/l892s/
641 20627628441542176662.pdf](https://nvbdcp.gov.in/WriteReadData/l892s/20627628441542176662.pdf), Last accessed on 2022-07-12.
- 642 [24] Baron IS. Test of everyday attention for children; the thames valley test company, bury st. Edmunds,
643 suffolk, UK. *Child Neuropsychology*. 2001;7(3):190-5.
- 644 [25] Khairnar K, Martin D, Lau R, Ralevski F, Pillai DR. Multiplex real-time quantitative PCR, mi-
645 croscopy and rapid diagnostic immuno-chromatographic tests for the detection of *Plasmodium* spp:
646 performance, limit of detection analysis and quality assurance. *Malaria journal*. 2009;8(1):1-17.
- 647 [26] De Onis M. World Health Organization Reference Curves. The ECOG's eBook on Child and

648 Adolescent Obesity. 2015:19.

649 [27] Bursac Z, Gauss CH, Williams DK, Hosmer DW. Purposeful selection of variables in logistic
650 regression. *Source code for biology and medicine*. 2008;3(1):1-8.

651 [28] Greenland S, Drescher K. Maximum likelihood estimation of the attributable fraction from logistic
652 models. *Biometrics*. 1993:865-72.

653 [29] Rückinger S, von Kries R, Toschke AM. An illustration of and programs estimating attributable
654 fractions in large scale surveys considering multiple risk factors. *BMC medical research methodology*.
655 2009;9(1):1-6.

656 [30] Lindstrom MJ, Bates DM. Newton—Raphson and EM algorithms for linear mixed-effects models for
657 repeated-measures data. *Journal of the American Statistical Association*. 1988;83(404):1014-22.

658 [31] Khamis AG, Mwanri AW, Kreppel K, Kwesigabo G. The burden and correlates of childhood
659 undernutrition in Tanzania according to composite index of anthropometric failure. *BMC*
660 *Nutrition*. 2020;6(1):1-13.

661 [32] Bhattarai S, Bhusal CK. Prevalence and associated factors of malnutrition among school going
662 adolescents of Dang district, Nepal. *AIMS Public Health*. 2019;6(3):291.

663 [33] Mann DM, Swahn MH, McCool S. Undernutrition and malaria among under-five children: findings
664 from the 2018 Nigeria demographic and health survey. *Pathogens and Global Health*. 2021;115(6):423-
665 33.

666 [34] Arzika AM, Maliki R, Boubacar N, Kane S, Cook CA, Lebas E, et al. Malaria parasitemia and nutritional
667 status during the low transmission season in the presence of azithromycin distribution among
668 preschool children in Niger. *The American journal of tropical medicine and hygiene*. 2020;103(3):1315.

- 669 [35] Gone T, Lemango F, Eliso E, Yohannes S, Yohannes T. The association between malaria and mal-
670 nutrition among under-five children in Shashogo District, Southern Ethiopia: a case-control study.
671 *Infectious diseases of poverty*. 2017;6(1):1-8.
- 672 [36] Yassin MA, Soliman AT, De Sanctis V, Yassin KS, Abdulla MA. Final height and endocrine complications
673 in patients with β -thalassemia intermedia: our experience in non-transfused versus infrequently
674 transfused patients and correlations with liver iron content. *Mediterranean Journal of Hematology*
675 *and Infectious Diseases*. 2019;11(1).
- 676 [37] Harding KL, Aguayo VM, Webb P. Factors associated with wasting among children under five years
677 old in South Asia: Implications for action. *PloS one*. 2018;13(7):e0198749.
- 678 [38] Nshimiyiryo A, Hedt-Gauthier B, Mutaganzwa C, Kirk CM, Beck K, Ndayisaba A, et al. Risk factors
679 for stunting among children under five years: a cross-sectional population-based study in Rwanda
680 using the 2015 Demographic and Health Survey. *BMC public health*. 2019;19(1):1-10.
- 681 [39] Tariku EZ, Abebe GA, Melketsedik ZA, Gutema BT. Prevalence and factors associated with stunting
682 and thinness among school-age children in Arba Minch Health and Demographic Surveillance Site,
683 Southern Ethiopia. *PloS one*. 2018;13(11):e0206659.
- 684 [40] Scaglioni S, De Cosmi V, Ciappolino V, Parazzini F, Brambilla P, Agostoni C. Factors influencing
685 children's eating behaviours. *Nutrients*. 2018;10(6):706.
- 686 [41] Snow R, Molyneux C, Njeru E, Omumbo J, Nevill C, Muniu E, et al. The effects of malaria control
687 on nutritional status in infancy. *Acta Tropica*. 1997;65(1):1-10.
- 688 [42] Ntab B, Cissé B, Boulanger D, Sokhna C, Targett G, Lines J, et al. Impact of intermittent preventive
689 anti-malarial treatment on the growth and nutritional status of preschool children in rural Senegal

690 (west Africa). The American journal of tropical medicine and hygiene. 2007;77(3):411.

691 [43] Torun B. Energy requirements of children and adolescents. Public health nutrition. 2005;8(7a):968-93.

692 **Appendix**

693 **Post trial**

694 Table 9: LMM results for height post trial

695

Random effects	Variance				
Child id (intercept)	38.2791				
School (intercept)	0.2333				

Fixed effect	estimate	sd	df	t value	p-value
Residual		10.4646			
Intercept	93.7178	1.1818	954	79.30	<.0001
age	4.1205	0.1208	1453	34.12	<.0001
sex: female	1.6766	0.3466	1448	4.84	<.0001
sex: male	Ref				
study_group: DP	0.1194	1.5825	1446	0.08	0.9398
study_group: ASAQ	1.2918	1.6223	1449	0.80	0.4260
study_group: standard care	Ref				
ses: high	0.3755	0.3449	1449	1.09	0.2765
ses: low	Ref				
age* DP	-0.08335	0.1665	1444	-0.50	0.6167
age* ASAQ	-0.2116	0.1695	1449	-1.25	0.2120
age* standard care	Ref				

696 Table 10: LMM for weight during post trial

697

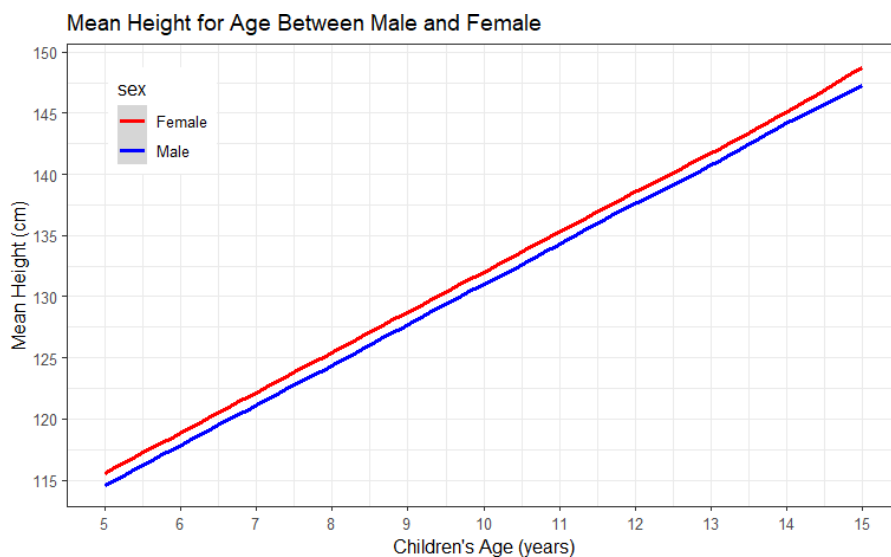
Random effects	Variance				
	40				

698	Child id (intercept)		25.6139			
699	School (intercept)		0.0130			
<hr/>						
	Fixed effect	estimate	sd	df	t value	p-value
700	Residual		2.9475			
701	Intercept	5.1482	0.9190	1460	5.60	<.0001
702	age	2.5368	0.09513	1459	26.67	<.0001
703	sex: female	1.5232	0.2733	1457	5.57	<.0001
704	sex: male	Ref				
705	study_group: DP	-1.8639	1.2488	1457	-1.49	0.1358
706	study_group: ASAQ	0.02393	1.2799	1459	0.02	0.9851
707	study_group: standard care	Ref				
708	ses: high	0.2968	0.2720	1458	1.09	0.2754
709	ses: low	Ref				
710	age*DP	0.1710	0.1314	1456	1.30	0.1934
711	age*ASAQ	-0.04165	0.1337	1459	-0.31	0.7555
<hr/>						
712	age*standard care	Ref				

713 Table 11: LMM results for bmi post trial

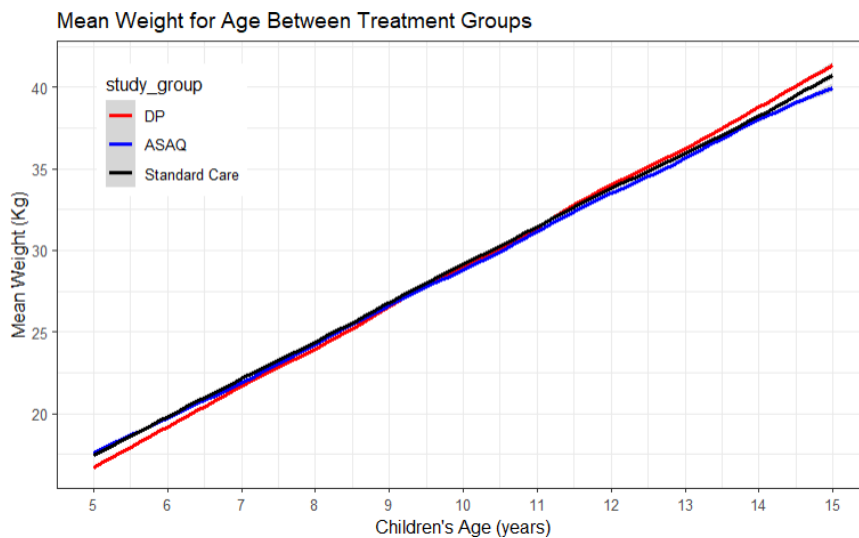
	Random effects	Variance
714	Child id (intercept)	0.8612
	School (intercept)	0.0211

Fixed effect	estimate	sd	df	t value	p-value
Residual			114.59		
Intercept	12.0093	1.2986	1924	9.25	<.0001
age	0.4086	0.1344	1925	3.04	0.0024
sex: female	0.7334	0.3854	1930	1.90	0.0572
sex: male	Ref				
study_group: DP	-1.0543	1.7561	1908	-0.60	0.5483
study_group: ASAQ	1.2705	1.8052	1917	0.70	0.4817
study_group: standard care	Ref				
ses: high	0.4647	0.3840	1936	1.21	0.2263
ses: low	Ref				
age*DP	0.1101	0.1845	1901	0.60	0.5506
age*ASAQ	-0.09210	0.1886	1916	-0.49	0.6254
age*standard care	Ref				



716

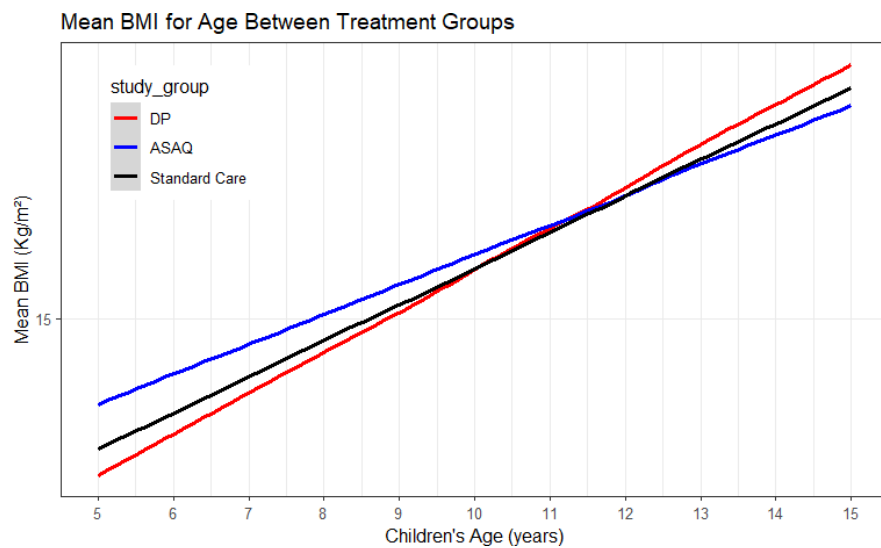
Figure 5: The trend of Height-for-age of school-age children grouped by sex



717

718

Figure 6: The trend of mean weight-for-age of school-age children grouped by treatment



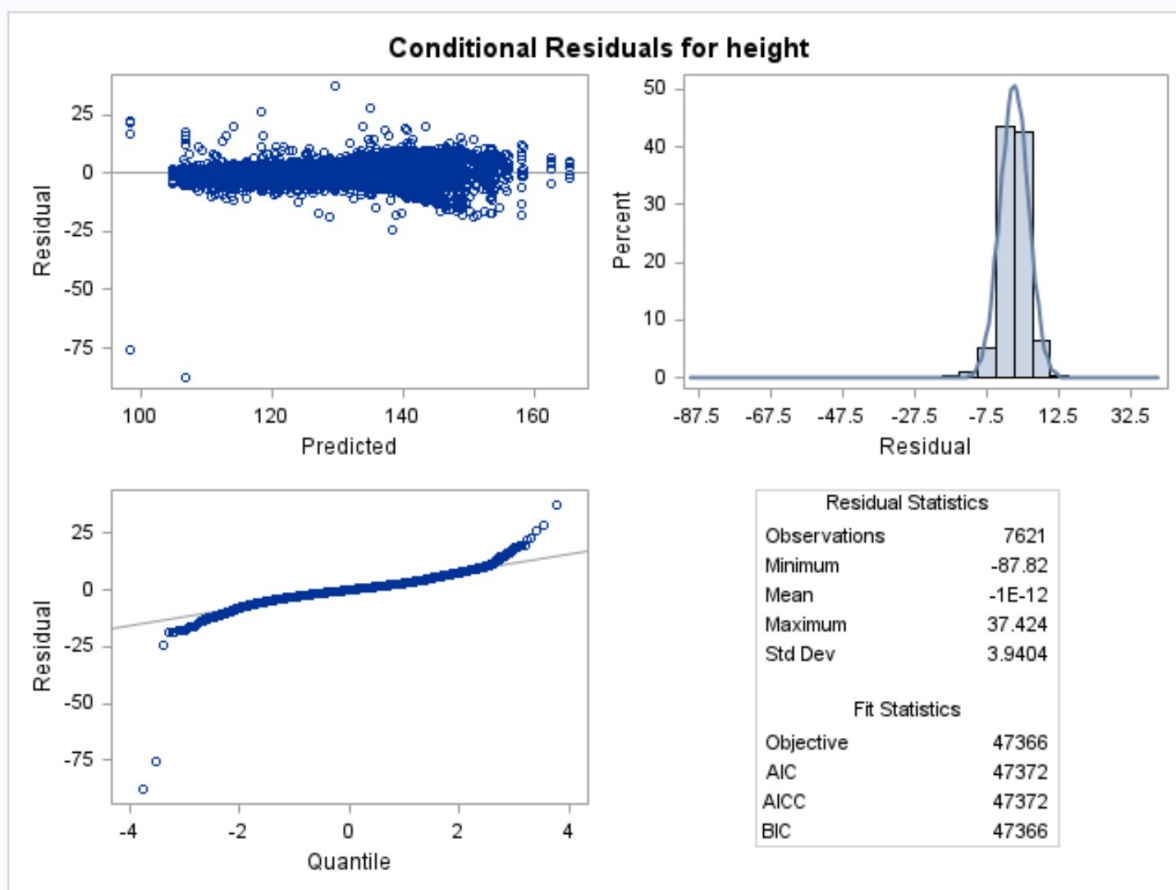
719

720

Figure 7: The trend of BMI-for-age of school-age children grouped by treatment

721

Residual plots



722

723

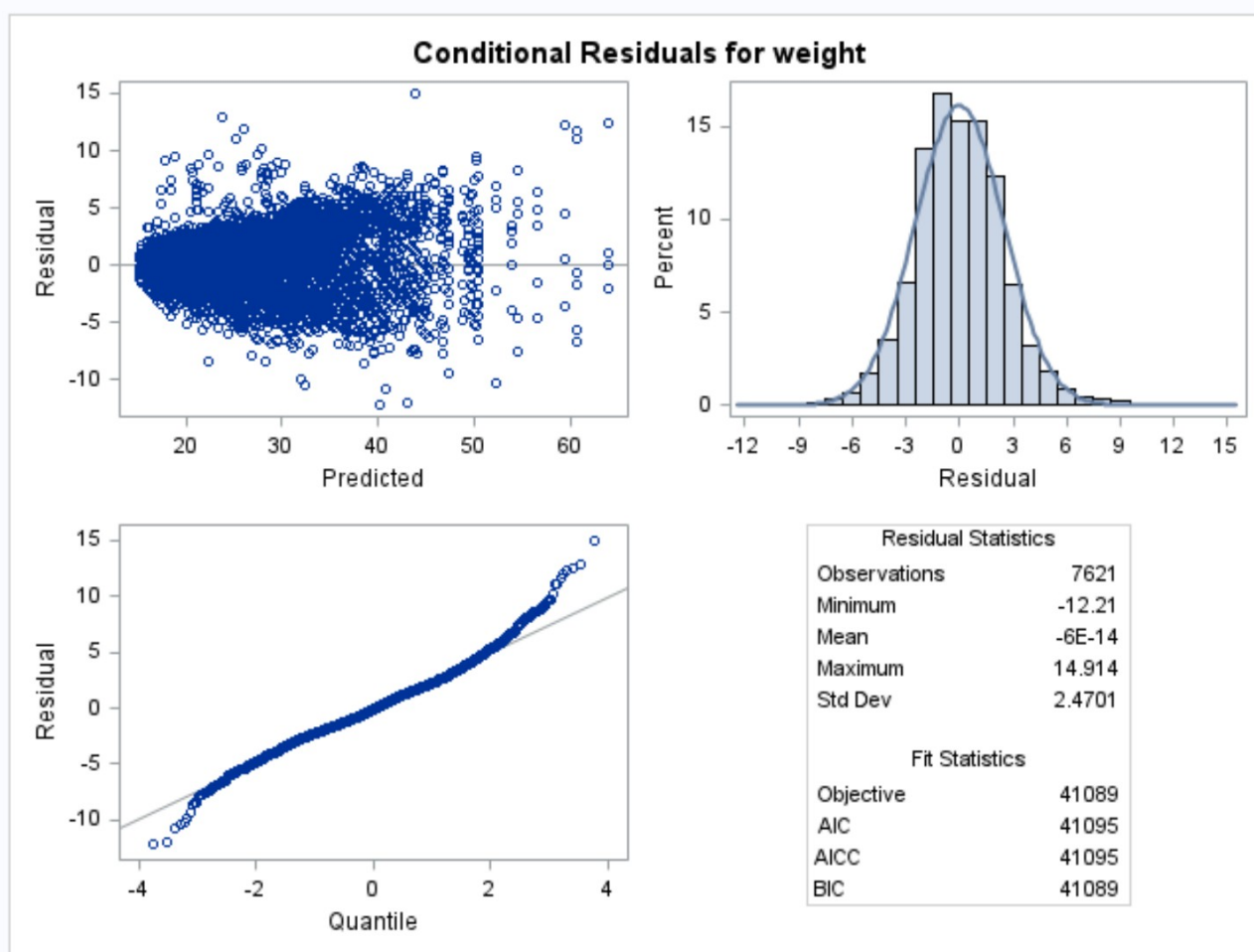
Figure 8: Residual plot for height

724

Table 12: AIC for LMM with different random effects

Models	child id	school	age	AIC
1	intercept	intercept	slope	48377.6
2	intercept	intercept	-	47372.3

3	intercept	-	slope	47423.7
4	intercept	-	-	48371.4



725

726

Figure 9: Residual plot for weight

727

Table 13: Comparing AIC values for models with and without quadratic term of age

Height	df	AIC
Model1_age	8	29839.3
Model2_age ²	9	29837.5
Weight		
Model1_age	8	24648.78
Model2_age ²	9	24647.02
BMI		
Model1_age	8	30711.92
-		
Model2_age ²	9	30711.50