

Effects of Diazepam on Hippocampal Blood Flow in People at Clinical High Risk for Psychosis

Nicholas R. Livingston, MSc^{1*}; Amanda Kiemes, PhD¹; Gabriel A. Devenyi, PhD^{2,3}; Samuel Knight, MSc¹; Paulina B. Lukow, PhD^{4,5}; Luke A. Jelen, MD¹; Thomas Reilly, MD⁶; Aikaterini Dima, MD⁵; Maria Antonietta Nettis, PhD⁵; Cecilia Casetta, MD⁵; Tyler Agyekum, BSc^{2,3}; Fernando Zelaya, PhD⁷; Thomas Spencer, PhD^{5,8}; Andrea De Micheli, PhD^{5,8}; Paolo Fusar-Poli, PhD^{5,8,9,10}; Anthony A. Grace, PhD¹¹; Steve C.R. Williams, PhD⁷; Philip McGuire, PhD⁶; Alice Egerton, PhD⁵; M. Mallar Chakravarty, PhD^{2,3}; Gemma Modinos, PhD^{1,12}

¹Department of Psychological Medicine, Institute of Psychiatry, Psychology, and Neuroscience, King's College London, UK

²Department of Psychiatry, McGill University, Montreal, QC, Canada

³Cerebral Imaging Centre, Douglas Mental Health University Institute, Montreal, QC, Canada

⁴Institute of Cognitive Neuroscience, University College London, UK

⁵Department of Psychosis Studies, Institute of Psychiatry, Psychology, and Neuroscience, King's College London, UK

⁶Department of Psychiatry, University of Oxford, UK

⁷Department of Neuroimaging, Institute of Psychiatry, Psychology, and Neuroscience, King's College London, UK

⁸Outreach and Support in South-London (OASIS) service, South London and Maudsley (SLaM) NHS Foundation Trust, UK

⁹Department of Brain and Behavioural Sciences, University of Pavia, Italy

¹⁰Department of Psychiatry and Psychotherapy, Ludwig-Maximilian-University Munich, Germany

¹¹Departments of Neuroscience, Psychiatry and Psychology, University of Pittsburgh, Pittsburgh, PA, USA

¹²MRC Centre for Neurodevelopmental Disorders, King's College London, UK

* Corresponding author:

Nicholas.livingston@kcl.ac.uk

Short/running title: Diazepam effects on hippocampal blood flow in CHR-P

Keywords: benzodiazepine; GABA; neuroimaging; CBF; schizophrenia; experimental medicine

Abstract (244 words)

Background: Elevated hippocampal perfusion has been observed in people at clinical high-risk for psychosis (CHR-P). Preclinical evidence suggests that hippocampal hyperactivity is central to the pathophysiology of psychosis, and that prophylactic treatment with diazepam during adolescence can prevent the development of psychosis-relevant phenotypes. Here we examined whether diazepam normalises hippocampal perfusion in CHR-P individuals.

Methods: Using a randomised, double-blind, placebo-controlled, crossover design, 24 CHR-P individuals were assessed with MRI on two occasions, once following a single oral dose of diazepam (5 mg) and once following placebo. Regional cerebral blood flow (rCBF) was measured using 3D pseudo-continuous arterial spin labelling and sampled in native space using participant-specific hippocampus/subfield masks (CA1, subiculum, CA4/dentate gyrus). Twenty-one healthy controls (HC) were scanned using the same acquisition sequence, but without administration of diazepam or placebo. Mixed-design ANCOVAs and linear mixed-effects models were used to examine the effects of group (CHR-P placebo/diazepam vs. HC) and condition (CHR-P diazepam vs. placebo) on rCBF in the hippocampus as a whole and by subfield.

Results: Under the placebo condition, CHR-P individuals (mean[\pm SD] age: 24.1[\pm 4.8] years, 15F) showed significantly elevated rCBF compared to HC (mean[\pm SD] age: 26.5[\pm 5.1] years, 11F) in the hippocampus ($F(1,36)=8.2$, $p_{\text{FDR}}=0.004$) and across its subfields (all $p_{\text{FDR}}<0.001$). Following diazepam, rCBF in the hippocampus (and subfields, all $p_{\text{FDR}}<0.001$) was significantly reduced ($t(69)=-5.1$, $p_{\text{FDR}}<0.001$) and normalised to HC levels ($F(1,41)=0.3$, $p_{\text{FDR}}=0.225$).

Conclusions: Diazepam can normalise hippocampal hyperperfusion in CHR-P individuals, consistent with evidence implicating medial temporal GABAergic dysfunction in the pathophysiology of psychosis.

Introduction (739 words)

Transformations in our understanding of the nature, aetiology, and early course of psychotic disorders drove a marked re-orientation of mental health services toward early intervention in individuals at clinical high-risk for psychosis (CHR-P), raising the prospect that prevention of psychosis onset may be a realistic goal^{1,2}. Despite this progress, current treatments have a minimal influence on transition to psychosis^{3,4}, and there is no robust evidence to favour any single preventive intervention over another^{5,6}. A better understanding of the neurobiology underlying the CHR-P phenotype is critical for the much-needed development of interventions to prevent psychosis onset.

Postmortem, preclinical, and clinical neuroimaging evidence suggests that hippocampal abnormalities are central to the pathophysiology of psychosis^{7,8}, thus representing a potential therapeutic target. Hippocampal dysfunction in psychosis is proposed to arise from a disruption in neural excitatory/inhibitory balance driven by GABAergic inhibitory interneuron dysfunction⁹⁻¹³. This would render the hippocampus dysrhythmic and hyperactive¹⁴, and excessive glutamatergic output¹⁵⁻¹⁸ from the hippocampus to the striatum, amygdala, and prefrontal cortex may underlie the development of positive, negative, and cognitive symptoms, respectively¹⁹. Preclinical findings in the well-validated methylazoxymethanol acetate (MAM) rodent model of neurodevelopmental disruption²⁰⁻²² indicate that a loss of hippocampal parvalbumin-expressing (PV+) inhibitory interneurons²³ leads to hippocampal hyperactivity^{24,25}, as measured with electrophysiology. Rodent models have also shown that selective reduction in PV mRNA expression²⁶ or knock-out of PV+ interneuron expression^{24,25} are each sufficient to induce hippocampal hyperactivity. In MAM-treated rats, hippocampal hyperactivity leads to striatal hyperdopaminergia²¹, which is a

core neurobiological feature of positive symptoms in schizophrenia¹⁹. This hippocampal hyperactivity can in turn be normalised by hippocampal chemical inactivation^{22,27}, or by pharmacologically facilitating hippocampal GABA signalling through direct infusion of either a nonselective (the benzodiazepine midazolam)²⁸ or an $\alpha 5$ -subunit selective GABA_A receptor positive allosteric modulator (PAM)^{28,29}. Furthermore, chronic administration of the benzodiazepine diazepam during the peripubertal period prevented the development of psychosis-relevant features in adulthood^{30–32}, highlighting the prophylactic potential of GABA-enhancing compounds for psychosis.

In individuals at CHR-P, hippocampal hyperactivity has been observed *in vivo*^{33–37}, which – as a result of neurovascular coupling – is associated with increased regional cerebral blood flow or volume (rCBF or rCBV), revealed using arterial spin labelling (ASL) or gadolinium-contrast magnetic resonance imaging (MRI), respectively. Elevated hippocampal rCBF in CHR-P individuals has been associated with elevated striatal pre-synaptic dopamine synthesis capacity³⁸ and elevated medial prefrontal cortex GABA concentrations³⁹. Baseline elevated hippocampal rCBF or rCBV was also found to predict higher positive and negative symptoms severity³³, poor functioning^{33,38}, and transition to psychosis^{33,34,39}, and to normalise in those individuals who remit from the CHR-P state³⁵. Within the hippocampus, hyperactivity is proposed to originate in the CA1 subfield and then extend to the subiculum and beyond^{33,34,37}. Hence, hippocampal rCBF may be a biomarker for symptom severity and psychosis onset in CHR-P individuals, which preclinical evidence suggests may be prevented by pharmacological enhancement of hippocampal GABA levels^{30–32}.

To determine whether pharmacologically targeting hippocampal dysfunction in CHR-P individuals with a GABA-enhancing drug may prevent or delay the onset of psychosis, proof-of-concept mechanistic evidence is first required to elucidate its effects on hippocampal hyperactivity. While prior positron or xenon emission tomography (PET or XET) research demonstrated global reductions in CBF under an acute non-sedating dose of a benzodiazepine in healthy controls⁴⁰⁻⁴³, including reductions in temporal lobe rCBF⁴⁰, no studies have investigated the hippocampus specifically. Furthermore, no studies have been conducted in CHR-P individuals, in whom the effects of a benzodiazepine challenge on hippocampal rCBF may differ from that in healthy controls given the proposed GABAergic dysfunction in this population¹⁴. Hence, the present study compared the acute effects of a single dose of diazepam vs. placebo on ASL-derived rCBF in the hippocampus and its subfields in 24 CHR-P individuals. To determine baseline alterations in the CHR-P group, rCBF measures from CHR-P individuals under placebo were compared to those from 21 healthy controls (HC). We hypothesised that compared to HC, CHR-P individuals under placebo would show increased rCBF in the hippocampus and its subfields, which would be most apparent in the CA1 subregion^{33,34}. Secondly, consistent with the preclinical evidence²⁹, we hypothesised that a single dose of diazepam would reduce hippocampal rCBF in CHR-P individuals compared to placebo, and that this would be observed across all subfields due to similar levels of GABA_A receptor expression^{44,45}. For completeness, supplementary analyses examined broader effects of diazepam on voxel-wise grey matter (GM) rCBF, as well as associations between baseline levels of symptoms/functioning and diazepam-induced hippocampal rCBF changes in CHR-P individuals.

Methods and Materials (1209 words)

Participants

CHR-P individuals

Twenty-four CHR-P individuals, aged 18-32, were recruited from OASIS (Outreach and Support in South London), an early-intervention service within the South London and Maudsley NHS Foundation Trust, UK⁴⁶. CHR-P criteria was assessed using the Comprehensive Assessment of At-Risk Mental State (CAARMS)⁴⁷. All individuals were required to be experiencing current attenuated psychotic symptoms, defined as having a severity and frequency score of 3 or above for an ongoing symptom on either P1 (unusual thought content), P2 (non-bizarre ideas), P3 (perceptual abnormalities), or P4 (disorganised speech) of the CAARMS. Exclusion criteria included previous/current exposure to antipsychotics, current exposure to psychotropic medications with GABAergic or glutamatergic action (except for antidepressants), pregnancy/breastfeeding, IQ<70, and any contraindication to MRI scanning.

HC individuals

In order to validate hippocampal hyperactivity in this sample of CHR-P individuals, we utilised data from 21 HC from a previous study⁴⁸, scanned on the same MRI scanner with the same scanning sequences and acquisition parameters as the CHR-P sample (below). HC data were reanalysed with the same preprocessing steps as the CHR-P data. Details on the HC dataset recruitment and inclusion/exclusion criteria are described in the original publication⁴⁸.

Study design and procedure

This study had full ethical approval from the National Health Service UK Research Ethics Committee and was carried out at King's College London. All participants provided written informed consent. Using a randomised, double-blind, placebo-controlled, crossover design, the 24 CHR-P participants underwent two MRI sessions, once under an acute oral dose of diazepam (5 mg; generic) and once under oral placebo (50 mg ascorbic acid; Crescent Pharma Ltd, Hampshire, UK), with a minimum 3-week washout period between visits. Prior to the first scanning visit and randomisation, during an assessment visit demographic information, basic medical history, and clinical/cognitive assessments were collected, including the CAARMS⁴⁷, Global Functioning Social and Role scales⁴⁹, Hamilton Anxiety and Depression scales^{50,51}, Wechsler Adult Intelligence Scale III⁵², and the Trail Making Test A & B⁵³. At each scanning visit, the capsule (with diazepam or placebo) was administered 60 minutes prior to MRI scanning, so that the MRI session coincided with peak diazepam plasma levels⁵⁴. Full details of the clinical/cognitive assessments and scanning visit procedures (including randomisation and maintenance of blinding) can be found in the Supplementary Methods.

MRI acquisition

MRI scanning for all participants was conducted at the Centre for Neuroimaging Sciences, King's College London, using a General Electric MR750 3.0T MR scanner with an 8-channel head coil. rCBF was measured using a 3D pseudo-continuous ASL sequence (pcASL; TE=11.088 ms, TR=4,923 ms, FoV=240) as used in previous CHR-P studies^{35,36,48}. Total scan time was 6 minutes and 8 seconds. Further details of the pcASL sequence can be found in the Supplementary Methods. For image registration and generation of hippocampal/subfield masks, a T1-weighted SPGR (TE=3.02 ms, TR=7.31 ms, TI=400 ms, flip angle=11°,

matrix=256x256, FoV=270, in-plane resolution=1.05x1.05 mm², slice thickness=1.2 mm, 196 slices) and T2-weighted FRFSE (TE=64.9 ms, TR=4380 ms, flip angle=111°, matrix=320x256, FoV=240, in-plane resolution=1.25x0.94 mm², slice thickness=2 mm, 72 slices) image was acquired.

Image processing

Generation of hippocampal/subfield and total GM masks

Structural scans were preprocessed, including denoising, and correcting bias field inhomogeneities using the N3 algorithm⁵⁵. Hippocampus/subfield masks (whole hippocampus, subiculum, CA1, and CA4/DG) were then generated for each participant from their preprocessed structural T1 SPGR scan by using the MAGEt Brain (multiple automatically generated templates of different brains) toolbox⁵⁶⁻⁵⁸ (Figure 1). This toolbox has been validated to generate accurate hippocampus and subfield segmentations in Alzheimer's disease and psychosis cohorts, with greater accuracy than other available toolboxes including Freesurfer 7 and FSL FIRST⁵⁷. This is largely due to an intermediate template step which allows incorporating the neuroanatomical variability of the dataset into the segmentation of each participant, reducing registration and resampling errors, thereby yielding more accurate results. Hippocampal subfields CA2/3 were not included due to the limitations in reliably sampling these smaller regions within the spatial resolution and low signal-to-noise ratio constraints of ASL⁵⁹. Total GM masks were made through binarising GM segmentations.

ASL sampling

Masks were registered and resampled to the individuals respective CBF map using ANTs/2.5.0 (<https://github.com/ANTsX/ANTs>), and the mean rCBF value was extracted per

ROI per hemisphere in native space using minc-toolkit-v2/1.9.18 tools (<https://bic-mni.github.io/>; Figure 1; Supplementary Methods).

Region-of-interest (ROI) analysis

All ROI analyses were completed in R 4.2.2 (<https://www.r-project.org/>). Individual models assessed the effect of group (CHR-P placebo/diazepam vs. HC) or condition (CHR-P diazepam vs. placebo) on rCBF per ROI (total GM, whole hippocampus, CA1, subiculum, CA4/DG; Figure 2C). Each model included rCBF values per hemisphere, on the basis that bilateral sampling of the same region in the same subject reflects a repeated measurement. Therefore, a group/condition*hemisphere term was included to investigate whether the effect of group or condition on rCBF significantly differed within a region based on hemisphere. Significance was set at $pFDR < 0.05$, after correcting for multiple comparisons using the Benjamini-Hochberg method⁶⁰.

CHR-P placebo vs. HC. Two-way mixed analysis of covariance (ANCOVA; package stats/3.6.2) models assessed baseline rCBF differences in CHR-P individuals compared to HC, covarying for age, sex, and global CBF. Supplementary analyses were performed covarying for demographic characteristics which differed between groups (IQ, ethnicity) or are known to impact rCBF (daily current cigarette use⁶¹ and ROI grey matter volume⁶²).

CHR-P diazepam vs. CHR-P placebo. Diazepam-induced changes in rCBF compared to placebo were assessed using linear mixed-effects models (package lme4/1.1-34) with participant ID as a random effect (intercept). Given the within-subject design and widespread expression of GABA_A receptors with benzodiazepine binding sites across the brain⁴⁴, global CBF was not included as a covariate. Supplementary analyses investigated

potential confounding effects of global CBF, sex, order of scan conditions, and number of days between scans on the results.

CHR-P diazepam vs. HC. To examine whether diazepam would normalise hippocampal rCBF in CHR-P individuals to HC levels, two-way mixed ANCOVA models were run covarying for age, sex, and global CBF.

Exploratory/supplementary analyses

Voxel-wise grey matter rCBF analysis

For completeness, we explored the effects of diazepam vs. placebo on voxel-wise GM rCBF. The two-level modelbuild toolkit (github.com/CoBrALab/optimized_ants_MultivariateTemplateConstruction) was used to generate a study-specific anatomical template (Figure 1; Supplementary Methods). CBF maps were resampled into common-space and smoothed with a 6 mm FWHM Gaussian kernel. A voxel-wise linear mixed-effects model (R-3.5.1, RMINC-1.5.2.2, lme4 1.1-21) was used to investigate the effect of condition (CHR-P diazepam vs. placebo) on rCBF, with participant ID as random effect and masked using a study-average GM mask. Significance was set at $pFDR < 0.05$. The above procedure was repeated for investigating voxel-wise group differences in rCBF between CHR-P placebo and HC, using the one-level model template build and running a voxel-wise linear model, covarying for global CBF, age, and sex, and masked using a study-average GM mask.

Clinical characteristics and hippocampal rCBF change

Supplementary analyses using Pearson's correlations assessed whether baseline clinical characteristics (positive symptom severity, negative symptom severity, cognitive functioning, social functioning, role functioning, anxiety symptom severity, depression symptom severity)

were associated with the mean percent change in bilateral hippocampal rCBF under diazepam vs. placebo (see Supplementary Methods for further details on composition of clinical characteristics scores). Potential confounding effects of global CBF on these results were explored using partial Pearson's correlations. Outlier detection was performed on significant correlations using Cook's distance. Significance was set at $p < 0.05$, and multiple comparison corrections were not performed as these analyses were exploratory.

Results (625 words)

Participant demographic and clinical characteristics are detailed in Table 1. CHR-P individuals had a significantly lower IQ compared to HC and differed in terms of ethnicity. This was driven by an above-average mean IQ⁶³ and a higher proportion of white ethnicity in the HC group.

ROI analysis

CHR-P placebo vs. HC

Global CBF. Mean CBF in total brain GM (ml/100g/min) was significantly higher ($F(1,42)=5.2$, $p_{FDR}=0.014$) in CHR-P individuals under placebo (62.1 ± 14.9) compared to HC (54.3 ± 10.9 ; Figure 2A).

Hippocampus and subfield rCBF. After controlling for global CBF, age, and sex, CHR-P participants in the placebo condition had significantly higher rCBF compared to HC (12.8%) in the hippocampus ($F(1,41)=24.7$, $p_{FDR}<0.001$), which did not differ between hemispheres ($F(1,44)=1.6$, $p_{FDR}=0.217$; Figure 2B). Similar results were found for all subfields: **CA1** (group: $F(1,41)=25.8$, $p_{FDR}<0.001$; group*hemisphere: $F(1,44)=1.1$, $p_{FDR}=0.364$; Figure 2D), **subiculum** (group: $F(1,41)=25.7$, $p_{FDR}<0.001$; group*hemisphere: $F(1,44)=1.2$, $p_{FDR}=0.274$; Figure 2E), and **CA4/DG** (group: $F(1,41)=20.4$, $p_{FDR}<0.001$; group*hemisphere: $F(1,44)=3.2$, $p=0.082$; Figure 2F). These results did not change when adding in additional covariates (IQ, ethnicity, current daily cigarette use, ROI grey matter volume; Supplementary Table 1).

CHR-P diazepam vs. CHR-P placebo

Global CBF. In CHR-P participants, mean CBF in total brain grey matter was significantly lower ($t(23)=-4.3$, $p_{FDR}<0.001$) under diazepam (56.3 ± 12.7) compared to placebo (62.1 ± 14.9 ; Figure 2A).

Hippocampus and subfield rCBF. Diazepam significantly reduced rCBF in the hippocampus by 7.8% ($t(69)=-5.1$, $p_{FDR}<0.001$), which did not differ between hemispheres ($t(69)=0.9$, $p_{FDR}=0.366$; Figure 2B). This effect was observed across all subfields: **CA1** 8.2% (condition: $t(69)=-5.1$, $p_{FDR}<0.001$; condition*hemisphere: $t(69)=0.8$, $p_{FDR}=0.403$; Figure 2D), **subiculum** 8.6% (condition: $t(69)=-4.9$, $p_{FDR}<0.001$; condition*hemisphere: $t(69)=1.1$, $p_{FDR}=0.303$; Figure 2E), and **CA4/DG** 8.7% (condition: $t(69)=-4.7$, $p_{FDR}<0.001$; condition*hemisphere: $t(69)=0.8$, $p=0.405$; Figure 2F). These results did not change after controlling for global CBF, sex, order of scan conditions, or number of days between scans (Supplementary Table 1).

CHR-P diazepam vs. HC

Global CBF. There was no significant difference ($F(1,42)=0.5$, $p_{FDR}=0.209$) in mean total brain GM CBF in CHR-P in the diazepam condition (56.3 ± 12.7) compared to HC (54.3 ± 10.9 ; Figure 2A).

Hippocampus and subfield rCBF. There was no significant difference in rCBF between CHR-P under diazepam compared to HC in the hippocampus ($F(1,41)=0.4$, $p_{FDR}=0.204$; Figure 2B), CA1 ($F(1,41)=0.9$, $p_{FDR}=0.153$; Figure 2D), subiculum ($F(1,41)=0.8$, $p_{FDR}=0.272$; Figure 2E), or CA4/DG ($F(1,41)=0.263$, $p_{FDR}=0.201$; Figure 2F).

Exploratory/supplementary analyses

Voxel-wise grey matter rCBF analysis

CHR-P placebo vs. HC. Several cortical regions showed increases (e.g., inferior/dorsolateral frontal gyrus and temporal pole, $p_{FDR}<0.05$) and decreases (e.g., inferior parietal and middle occipital gyrus, $p_{FDR}<0.05$) in rCBF in the CHR-P placebo condition compared to HC (Supplementary Figure 1; Supplementary Table 2).

CHR-P diazepam vs. CHR-P placebo. There was a global pattern of reduced rCBF under the diazepam compared to placebo condition across cortical and subcortical areas (Figure 3; Supplementary Table 3). Peak voxels (all $p_{FDR} < 0.01$) were located in temporal (temporal pole, parahippocampal gyrus, hippocampus, amygdala, middle temporal gyrus), parietal (pre/post central gyrus, middle cingulate), frontal (dorsolateral prefrontal cortex (PFC), ventromedial orbitofrontal cortex, insula, superior frontal gyrus), and occipital (lingual gyrus, occipital gyrus, cuneus) regions, cerebellum, and subcortical regions (thalamus, putamen, caudate, and nucleus accumbens).

Clinical characteristics and hippocampal rCBF change

Exploratory analyses revealed significant associations between baseline positive symptoms severity/social functioning and change in hippocampal rCBF, such that higher baseline positive symptom severity ($r=0.494$, $p=0.014$; Figure 4A) and poorer social functioning ($r=-0.416$, $p=0.043$; Figure 4D) were associated with less reduction in hippocampal rCBF following diazepam vs. placebo. Removal of outliers strengthened these correlations (positive symptoms: $r=0.598$, $p=0.003$; social functioning: $r=-0.538$, $p=0.008$). There were no significant correlations between negative symptoms ($r=-0.188$, $p=0.415$; Figure 4B), cognitive symptoms ($r=0.114$, $p=0.641$; Figure 4C), role functioning ($r=-0.106$, $p=0.623$; Figure 4E), anxiety ($r=-0.217$, $p=0.333$; Figure 4F) or depression symptoms ($r=-0.155$, $p=0.501$; Figure 4G) and diazepam-induced change in whole hippocampal rCBF. Most of these results remained unchanged when adding global CBF as covariate (Supplementary Table 4).

Discussion (1352 words)

In our sample, hippocampal rCBF was significantly higher in CHR-P individuals under placebo compared to HC. Following diazepam, hippocampal rCBF in CHR-P individuals was significantly reduced and normalised to HC levels. This effect was evident across all hippocampal subfields investigated. Our findings in CHR-P individuals present forward-translation of mechanistic evidence from psychosis-relevant preclinical studies, lending new empirical support to the notion that regulating hippocampal hyperactivity through GABA-enhancing compounds may be a potential therapeutic strategy in early psychosis.

Our finding of elevated hippocampal rCBF in CHR-P (under placebo) compared to HC is consistent with previous rCBF or rCBV studies³³⁻³⁷. We also identified a global increase in CBF, as previously reported³⁵. Nonetheless, hippocampal rCBF elevation remained significant after controlling for global CBF, suggesting that the hippocampus is particularly hyperactive in CHR-P individuals compared to controls. We hypothesised that elevations in hippocampal rCBF would be most pronounced in the CA1 subfield, based on a recent rCBV study in CHR-P individuals³⁷ and current models of psychosis pathophysiology⁷. However, we observed similarly elevated rCBF across all subfields (CA1, subiculum, and CA4/DG). We sampled rCBF across the whole length of the hippocampus, whereas the previous study³⁷ only focussed on anterior regions of hippocampal subfields, and it is possible that posterior sections of subfields may also be hyperactive. Indeed, prior studies reported peak increases in rCBF in CHR-P individuals within the body/tail of the hippocampus³⁵, a finding which was replicated in an independent cohort of CHR-P individuals³⁶ and in high schizotypy⁴⁸. Additionally, in contrast to the previous study³⁷, our study used rCBF which is more tightly coupled to neuronal activity than rCBV⁶⁵, sampled in native vs. common space thereby circumventing

normalisation errors⁶⁶, and sampled with individual hippocampal/subfield masks thereby affording higher accuracy given the neuroanatomical diversity among individuals⁶⁷.

In line with our second hypothesis, diazepam significantly reduced hippocampal and subfield rCBF vs. placebo in CHR-P individuals, to the extent that rCBF was no longer significantly different to HC. This finding is consistent with predictions from preclinical studies²⁹. In the MAM rodent model, hippocampal hyperactivity is associated with a local reduction of GABAergic PV+ interneurons²⁴⁻²⁶, and increasing GABAergic inhibition by hippocampal infusion of an $\alpha 5$ -GABA_A PAM normalises hippocampal hyperactivity²⁹. Importantly, repeated oral administration of diazepam in peripubertal MAM rats prevents local PV+ interneuron loss³¹ and the emergence of a hyperdopaminergic state at adulthood³⁰. A likely mechanism is downregulation of amygdala-hippocampal overdrive, which causes PV+ interneuron loss in the hippocampus and, consequently, hippocampal hyperactivity. This is supported by findings that direct hippocampal infusion of the benzodiazepine midazolam normalises increased dopamine neuron firing in the VTA of adult MAM rats²⁸. Our finding of diazepam-induced reductions in rCBF across all hippocampal subfields aligns with the pharmacology of benzodiazepines and GABA_A receptor distribution^{45,68}. Benzodiazepines are PAMs of the GABA_A receptor via the benzodiazepine site, which lies adjacent to $\alpha 1$ -3/ $\alpha 5$ receptor subunits⁶⁹. Whilst GABA_A receptors are expressed on several cell types and sites⁷⁰, most commonly benzodiazepine binding facilitates greater hyperpolarisation of post-synaptic glutamatergic pyramidal cells and reduced pyramidal cell firing⁶⁹. This is expected to result in reduced metabolic requirements and, therefore, reduced rCBF⁷¹. Although there are slight differences in the levels of $\alpha 1$ -3/ $\alpha 5$ receptor subunits (and therefore benzodiazepine sites) across hippocampal subfields⁶⁸, $\alpha 1$ -3/ $\alpha 5$ -GABA_A receptors are highly expressed across the

hippocampus^{44,45}, and diazepam has comparably high affinity for them⁷². Additionally, as hippocampal subfields are highly interconnected⁶⁹, it is intuitive that diazepam was associated with a similar magnitude of reduction in rCBF across subfields.

Complementary voxel-wise analyses revealed rCBF reductions across multiple other cortical and subcortical regions in the diazepam condition. The largest reductions were seen in the pre/post central gyrus and inferior frontal regions, which are the areas with the highest benzodiazepine receptor binding sites both in vivo and ex vivo⁴⁴, and receive projections from the hippocampus^{15,16}. Large rCBF reductions were also seen in the striatum, ventromedial PFC, and amygdala, which together with the hippocampus compose a cortico-limbic-striatal circuit proposed to be central to the pathophysiology of psychosis¹⁹. The reductions in rCBF observed in further cortical regions (motor cortex, occipital cortex, thalamus, posterior cingulate cortex) may be related to the ubiquitous binding profile of benzodiazepines. For example, $\alpha 1$ - $\alpha 3$ subunits show widespread cortical distribution and have been implicated in benzodiazepine-related side effects such as sedation and addiction⁷³. Conversely, $\alpha 5$ -GABA_A receptors are preferentially expressed in the hippocampus^{45,68}, and $\alpha 5$ -GABA_A agonism of which is not associated with such side effects⁷³. Furthermore, there is evidence implicating $\alpha 5$ over $\alpha 1$ -3-GABA_A receptors in the pathophysiology of psychosis. PET studies in antipsychotic-free patients with schizophrenia using a $\alpha 5$ -GABA_A selective ligand (¹¹C-Ro15-4513) showed reduced binding in the hippocampus⁷⁴, and negative correlations with negative symptoms⁷⁵, whilst less specific $\alpha 1$ -3,5-GABA_A ligands (¹²³I-iomazenil; ¹⁸F-fluoroflumazenil; ¹¹C-flumazenil) found no differences between people with a diagnosis of schizophrenia⁷⁶⁻⁷⁹, or CHR-P individuals⁸⁰, and healthy controls. In line with this, evidence from the MAM model shows i) $\alpha 5$ but not

α 1-3-GABA_A receptors are reduced in the subiculum and CA1⁸¹, ii) overexpression of the α 5, but not α 1, subunit normalises hippocampal hyperactivity²⁷, and iii) an α 5-GABA_A PAM was able to normalise hippocampal hyperactivity²⁹ and attenuate dopamine neuron activity in the VTA to a greater extent than the non-specific benzodiazepine midazolam²⁸. Taken together, pharmacological agents with high selectivity for α 5-GABA_A receptors may be able to regulate hippocampal hyperactivity more specifically in psychosis while potentially avoiding some of the unwanted side effects of less-selective benzodiazepines. While several α 5-GABA_A PAMs exist⁸², none have yet proceeded to clinical development for psychosis.

Finally, reductions in hippocampal rCBF under diazepam appeared to be smallest in CHR-P participants with higher severity of positive symptoms and poorer social functioning. Current theories propose persistent hyperactivity (i.e., excessive glutamate release) in the hippocampus of CHR-P individuals can lead to atrophic processes of neuropil and PV+ inhibitory interneurons⁷. Therefore, diazepam may not be able to downregulate rCBF as effectively in CHR-P individuals with a more severe clinical profile and who potentially have a greater degree of GABAergic interneuron dysfunction. However, interpretation of this finding is limited by low power for examining correlations between clinical and imaging variables, and differences in timing between clinical and CBF measurements (i.e., 1st and 2nd scan were ~2 and ~6 weeks after the assessment visit).

Overall, this novel experimental medicine study presents first-in-human evidence of successful down-regulation of hippocampal hyperactivity by pharmacological modulation of the GABAergic system in CHR-P individuals. We used a robust randomised, double-blind, placebo-controlled, crossover study design, with an adequately powered sample based on

prior research determining that $n=20$ is needed for within-subject pharmacological ASL studies⁸³. All participants were antipsychotic-naïve, avoiding the known effects of antipsychotics on rCBF or the GABAergic system^{84–86}. We used advanced computational neuroimaging methods to automatically segment the hippocampus into its subfields with high accuracy, using the MAGeT Brain toolbox that outperforms popular competing methods⁵⁷. This high level of accuracy was maintained by sampling ROI rCBF in each participant's native space and conducting voxel-wise analyses in a study-specific common space. We used ASL, a highly suitable neuroimaging measure (e.g., compared to PET or magnetic resonance spectroscopy [MRS]) for investigating the effects of a GABAergic drug challenge on hippocampal function, given it is fully quantitative, non-invasive, has better spatial resolution and SNR compared to PET⁸³, and higher test-retest reliability than GABA concentration measurement using MRS⁸⁷.

This study also has some limitations. Despite segmenting all hippocampal subfields, we could not reliably sample and assess the smaller CA2/3 subfield due to the spatial resolution of ASL. Additionally, unlike the CHR-P group, the HC group were scanned in the absence of a placebo condition. It is possible that placebo administration or broader factors relating to participating in a pharmacological study may have impacted rCBF.

Conclusions

This study provides first evidence that a single dose of a non-specific GABA-enhancing drug like diazepam can significantly reduce hippocampal and subfield hyperactivity in CHR-P individuals and normalise it to HC levels. Diazepam-associated reductions in rCBF were also observed in other cortico-limbic-striatal regions, supporting further investigation of whether

diazepam can modulate the function of this circuit in CHR-P individuals. Furthermore, the results validate the use of ASL and native-space hippocampal and subfield sampling as viable biomarker endpoints for the development of more hippocampal-selective GABA-enhancing compounds for psychosis.

Acknowledgements

We would like to thank all our participants who took the time to participate in this study, as well as the OASIS clinical team members and the radiographers at the Centre for Neuroimaging Sciences. This is independent research funded by the Wellcome Trust & The Royal Society (grant number 202397/Z/16/Z to GM) and carried out at the National Institute for Health and Care Research (NIHR) Maudsley Biomedical Research Centre (BRC). NRL is supported by an MRC DTP PhD studentship. LAJ is supported by an MRC Clinical Research Training Fellowship (MR/T028084/1). PFP is supported by the European Union funding within the MUR PNRR Extended Partnership initiative on Neuroscience and Neuropharmacology (Project no. PE00000006 CUP H93C22000660006 “MNESYS, A multiscale integrated approach to the study of the nervous system in health and disease”). TJR is supported by an MRC Clinical Research Training Fellowship (MR/W015943/1). AAG is supported by the National Institute of Mental Health (USPHS MH57440). The views expressed are those of the authors and not necessarily those of the Wellcome Trust & The Royal Society, the NIHR, or the Department of Health and Social Care. For the purpose of open access, the author has applied a Creative Commons Attribution (CC BY) licence to any Accepted Author Manuscript version arising from this submission.

Data availability. Data will be made freely available upon publication ([10.6084/m9.figshare.24763839](https://doi.org/10.6084/m9.figshare.24763839)), including i) mean rCBF values per subject per ROI per hemisphere per condition, and ii) coding scripts for the MRI preprocessing pipeline (run in Unix/shell) and generation of figures (run in R).

Author contributions. **NRL:** Methodology, Software, Formal analysis, Investigation, Data curation, Writing – original draft, Visualization, Project administration; Funding acquisition.

AK: Investigation, Writing – review & editing, Project administration; **GAD:** Software, Formal

analysis, Writing – review & editing; **SK**: Investigation, Writing – review & editing; **PBL**: Investigation, Writing – review & editing; **LJ**: Investigation, Writing – review & editing; **TR**: Investigation, Writing – review & editing; **AD**: Investigation, Writing – review & editing; **MAN**: Investigation, Writing – review & editing; **CC**: Investigation, Writing – review & editing; **TA**: Formal analysis, Writing – review & editing; **FZ**: Software, Resources, Writing – review & editing; **TS**: Resources, Writing – review & editing; **ADM**: Resources, Writing – review & editing; **PPF**: Resources, Writing – review & editing; **AAG**: Writing – review & editing; **SCRW**: Resources, Writing – review & editing; **PM**: Conceptualization, Resources, Writing – review & editing; **AE**: Methodology, Writing – review & editing, Supervision; **MMC**: Software, Methodology, Writing – review & editing, Supervision; **GM**: Conceptualization, Methodology, Writing – review & editing, Supervision, Funding acquisition.

Disclosures

GM has received consulting fees from Boehringer Ingelheim. AE has received consulting fees from Leal Therapeutics. AAG has received funds from Lundbeck, Pfizer, Lilly, Roche, Janssen, Alkermes, Newron, Takeda and Merck. SCRW has recently received research funding from Boehringer Ingelheim and GE Healthcare to perform investigator-led research. All other authors have no financial disclosures or conflicts of interest.

References

1. Fusar-Poli P. Integrated Mental Health Services for the Developmental Period (0 to 25 Years): A Critical Review of the Evidence. *Front Psychiatry*. 2019;10:355. doi:10.3389/fpsy.2019.00355
2. McGorry PD, Killackey E, Yung A. Early intervention in psychosis: concepts, evidence and future directions. *World Psychiatry*. 2008;7(3):148-156.
3. Davies C, Cipriani A, Ioannidis JPA, et al. Lack of evidence to favor specific preventive interventions in psychosis: a network meta-analysis. *World Psychiatry*. Published online 2018. doi:10.1002/wps.20526
4. Devoe DJ, Farris MS, Townes P, Addington J. Interventions and Transition in Youth at Risk of Psychosis: A Systematic Review and Meta-Analyses. *J Clin Psychiatry*. 2020;81(3):9326. doi:10.4088/JCP.17r12053
5. Fusar-Poli P, Davies C, Solmi M, et al. Preventive Treatments for Psychosis: Umbrella Review (Just the Evidence). *Front Psychiatry*. 2019;10:764. doi:10.3389/fpsy.2019.00764
6. Bosnjak Kuharic D, Kekin I, Hew J, Rojnic Kuzman M, Puljak L. Interventions for prodromal stage of psychosis. *Cochrane Database of Systematic Reviews*. Published online 2019. doi:10.1002/14651858.CD012236.pub2
7. Lieberman JA, Girgis RR, Brucato G, et al. Hippocampal dysfunction in the pathophysiology of schizophrenia: a selective review and hypothesis for early detection and intervention. *Molecular Psychiatry*. Published online 2018. doi:10.1038/mp.2017.249
8. Knight S, McCutcheon R, Dwir D, et al. Hippocampal circuit dysfunction in psychosis. *Transl Psychiatry*. 2022;12(1):344. doi:10.1038/s41398-022-02115-5
9. Benes FM, Kwok EW, Vincent SL, Todtenkopf MS. A reduction of nonpyramidal cells in sector CA2 of schizophrenics and manic depressives. *Biological Psychiatry*. 1998;44(2):88-97. doi:10.1016/S0006-3223(98)00138-3
10. Heckers S, Stone D, Walsh J, Shick J, Koul P, Benes FM. Differential Hippocampal Expression of Glutamic Acid Decarboxylase 65 and 67 Messenger RNA in Bipolar Disorder and Schizophrenia. *Archives of General Psychiatry*. 2002;59(6):521-529. doi:10.1001/archpsyc.59.6.521
11. Zhang ZJ, Reynolds GP. A selective decrease in the relative density of parvalbumin-immunoreactive neurons in the hippocampus in schizophrenia. *Schizophr Res*. 2002;55(1-2):1-10. doi:10.1016/s0920-9964(01)00188-8
12. Konradi C, Yang CK, Zimmerman EI, et al. Hippocampal interneurons are abnormal in schizophrenia. *Schizophrenia Research*. 2011;131(1):165-173. doi:10.1016/j.schres.2011.06.007

13. Wang AY, Lohmann KM, Yang CK, et al. Bipolar disorder type 1 and schizophrenia are accompanied by decreased density of parvalbumin- and somatostatin-positive interneurons in the parahippocampal region. *Acta Neuropathol.* 2011;122(5):615-626. doi:10.1007/s00401-011-0881-4
14. Heckers S, Konradi C. GABAergic mechanisms of hippocampal hyperactivity in schizophrenia. *Schizophrenia Research.* Published online 2015. doi:10.1016/j.schres.2014.09.041
15. Cenquizca LA, Swanson LW. Spatial organization of direct hippocampal field CA1 axonal projections to the rest of the cerebral cortex. *Brain Research Reviews.* 2007;56(1):1-26. doi:10.1016/j.brainresrev.2007.05.002
16. Groenewegen HJ, der Zee EVV, te Kortschot A, Witter MP. Organization of the projections from the subiculum to the ventral striatum in the rat. A study using anterograde transport of Phaseolus vulgaris leucoagglutinin. *Neuroscience.* 1987;23(1):103-120. doi:10.1016/0306-4522(87)90275-2
17. Herman JP, Mueller NK. Role of the ventral subiculum in stress integration. *Behavioural Brain Research.* 2006;174(2):215-224. doi:10.1016/j.bbr.2006.05.035
18. Jay TM, Witter MP. Distribution of hippocampal CA1 and subicular efferents in the prefrontal cortex of the rat studied by means of anterograde transport of Phaseolus vulgaris-leucoagglutinin. *Journal of Comparative Neurology.* 1991;313(4):574-586. doi:10.1002/cne.903130404
19. Grace AA. Dysregulation of the dopamine system in the pathophysiology of schizophrenia and depression. *Nature Reviews Neuroscience.* Published online 2016. doi:10.1038/nrn.2016.57
20. Moore H, Jentsch JD, Ghajarnia M, Geyer MA, Grace AA. A Neurobehavioral Systems Analysis of Adult Rats Exposed to Methylazoxymethanol Acetate on E17: Implications for the Neuropathology of Schizophrenia. *Biological Psychiatry.* Published online 2006. doi:10.1016/j.biopsych.2006.01.003
21. Lodge DJ, Grace AA. Aberrant hippocampal activity underlies the dopamine dysregulation in an animal model of schizophrenia. *Journal of Neuroscience.* Published online 2007. doi:10.1523/JNEUROSCI.2847-07.2007
22. Lodge DJ, Grace AA. Hippocampal dysfunction and disruption of dopamine system regulation in an animal model of schizophrenia. *Neurotoxicity Research.* Published online 2008. doi:10.1007/BF03033801
23. Lodge DJ, Behrens MM, Grace AA. A loss of parvalbumin-containing interneurons is associated with diminished oscillatory activity in an animal model of schizophrenia. *Journal of Neuroscience.* Published online 2009. doi:10.1523/JNEUROSCI.5419-08.2009
24. Gilani AI, Chohan MO, Inan M, et al. Interneuron precursor transplants in adult hippocampus reverse psychosis-relevant features in a mouse model of hippocampal

- disinhibition. *Proc Natl Acad Sci U S A*. 2014;111(20):7450-7455.
doi:10.1073/pnas.1316488111
25. Kiemes A, Serrano Navacerrada ME, Kim E, et al. Erbb4 Deletion From Inhibitory Interneurons Causes Psychosis-Relevant Neuroimaging Phenotypes. *Schizophrenia Bulletin*. Published online December 27, 2022:sbac192. doi:10.1093/schbul/sbac192
26. Boley AM, Perez SM, Lodge DJ. A fundamental role for hippocampal parvalbumin in the dopamine hyperfunction associated with schizophrenia. *Schizophrenia Research*. Published online 2014. doi:10.1016/j.schres.2014.05.005
27. Donegan JJ, Boley AM, Yamaguchi J, Toney GM, Lodge DJ. Modulation of extrasynaptic GABAA alpha 5 receptors in the ventral hippocampus normalizes physiological and behavioral deficits in a circuit specific manner. *Nat Commun*. 2019;10:2819.
doi:10.1038/s41467-019-10800-1
28. Perez SM, McCoy AM, Prevot TD, et al. Hippocampal α 5-GABAA Receptors Modulate Dopamine Neuron Activity in the Rat Ventral Tegmental Area. *Biological Psychiatry Global Open Science*. 2023;3(1):78-86. doi:10.1016/j.bpsgos.2021.12.010
29. Gill KM, Lodge DJ, Cook JM, Aras S, Grace AA. A novel α 5GABA r-positive allosteric modulator reverses hyperactivation of the dopamine system in the MAM model of schizophrenia. *Neuropsychopharmacology*. Published online 2011.
doi:10.1038/npp.2011.76
30. Du Y, Grace AA. Peripubertal diazepam administration prevents the emergence of dopamine system hyperresponsivity in the MAM developmental disruption model of schizophrenia. *Neuropsychopharmacology*. Published online 2013.
doi:10.1038/npp.2013.101
31. Du Y, Grace AA. Loss of parvalbumin in the hippocampus of MAM schizophrenia model rats is attenuated by peripubertal diazepam. *International Journal of Neuropsychopharmacology*. Published online 2016. doi:10.1093/ijnp/pyw065
32. Du Y, Grace AA. Amygdala Hyperactivity in MAM Model of Schizophrenia is Normalized by Peripubertal Diazepam Administration. *Neuropsychopharmacology*. Published online 2016. doi:10.1038/npp.2016.42
33. Schobel SA, Lewandowski NM, Corcoran CM, et al. Differential targeting of the CA1 subfield of the hippocampal formation by schizophrenia and related psychotic disorders. *Archives of General Psychiatry*. Published online 2009.
doi:10.1001/archgenpsychiatry.2009.115
34. Schobel SA, Chaudhury NH, Khan UA, et al. Imaging Patients with Psychosis and a Mouse Model Establishes a Spreading Pattern of Hippocampal Dysfunction and Implicates Glutamate as a Driver. *Neuron*. Published online 2013.
doi:10.1016/j.neuron.2013.02.011

35. Allen P, Chaddock CA, Egerton A, et al. Resting hyperperfusion of the hippocampus, midbrain, and basal ganglia in people at high risk for psychosis. *American Journal of Psychiatry*. Published online 2016. doi:10.1176/appi.ajp.2015.15040485
36. Allen P, Azis M, Modinos G, et al. Increased resting hippocampal and basal ganglia perfusion in people at ultra high risk for psychosis: Replication in a second cohort. *Schizophrenia Bulletin*. Published online 2018. doi:10.1093/schbul/sbx169
37. Provenzano FA, Guo J, Wall MM, et al. Hippocampal Pathology in Clinical High-Risk Patients and the Onset of Schizophrenia. *Biol Psychiatry*. 2020;87(3):234-242. doi:10.1016/j.biopsych.2019.09.022
38. Modinos G, Richter A, Egerton A, et al. Interactions between hippocampal activity and striatal dopamine in people at clinical high risk for psychosis: relationship to adverse outcomes. *Neuropsychopharmacology*. 2021;46(8). doi:10.1038/s41386-021-01019-0
39. Modinos G, Simsek F, Azis M, et al. Prefrontal GABA levels, hippocampal resting perfusion and the risk of psychosis. *Neuropsychopharmacology*. 2018;43(13):2652-2659. doi:10.1038/s41386-017-0004-6
40. Mathew RJ, Wilson WH, Daniel DG. The effect of nonsedating doses of diazepam on regional cerebral blood flow. *Biological Psychiatry*. 1985;20(10):1109-1116. doi:10.1016/0006-3223(85)90010-1
41. Mathew RJ, Wilson WH. Evaluation of the effects of diazepam and an experimental anti-anxiety drug on regional cerebral blood flow. *Psychiatry Research: Neuroimaging*. 1991;40(2):125-134. doi:10.1016/0925-4927(91)90004-A
42. Matthew E, Andreason P, Pettigrew K, et al. Benzodiazepine receptors mediate regional blood flow changes in the living human brain. *Proc Natl Acad Sci USA*. 1995;92(7):2775-2779. doi:10.1073/pnas.92.7.2775
43. Moresco RM, Tettamanti M, Gobbo C, et al. Acute effect of 3-(4-acetamido)-butyryl-lorazepam (DDS2700) on brain function assessed by PET at rest and during attentive tasks. *Nuclear Medicine Communications*. 2001;22(4):399.
44. Nørgaard M, Beliveau V, Ganz M, et al. A high-resolution in vivo atlas of the human brain's benzodiazepine binding site of GABAA receptors. *Neuroimage*. 2021;232:117878. doi:10.1016/j.neuroimage.2021.117878
45. Sperk G, Schwarzer C, Tsunashima K, Fuchs K, Sieghart W. GABAA receptor subunits in the rat hippocampus I: Immunocytochemical distribution of 13 subunits. *Neuroscience*. 1997;80(4):987-1000. doi:10.1016/S0306-4522(97)00146-2
46. Fusar-Poli P, Spencer T, De Micheli A, Curzi V, Nandha S, Mcguire P. Outreach and support in South-London (OASIS) 2001-2020: Twenty years of early detection, prognosis and preventive care for young people at risk of psychosis. *European Neuropsychopharmacology*. 2020;39:111-122. doi:10.1016/j.euroneuro.2020.08.002

47. Yung AR, Yuen HP, McGorry PD, et al. Mapping the onset of psychosis: The Comprehensive Assessment of At-Risk Mental States. *Australian and New Zealand Journal of Psychiatry*. Published online 2005. doi:10.1111/j.1440-1614.2005.01714.x
48. Modinos G, Egerton A, McMullen K, et al. Increased resting perfusion of the hippocampus in high positive schizotypy: A pseudocontinuous arterial spin labeling study. *Human Brain Mapping*. Published online 2018. doi:10.1002/hbm.24231
49. Carrión RE, Auther AM, McLaughlin D, et al. The global functioning: Social and role scales-further validation in a large sample of adolescents and young adults at clinical high risk for psychosis. *Schizophrenia Bulletin*. 2019;45(4). doi:10.1093/schbul/sby126
50. Hamilton M. Hamilton Anxiety Rating Scale (HAM-A). *Journal of Medicine (Cincinnati)*. Published online 1959. doi:10.1145/363332.363339
51. HAMILTON M. A rating scale for depression. *Journal of neurology, neurosurgery, and psychiatry*. Published online 1960. doi:10.1136/jnnp.23.1.56
52. Velthorst E, Levine SZ, Henquet C, et al. To cut a short test even shorter: Reliability and validity of a brief assessment of intellectual ability in Schizophrenia - A control-case family study. *Cognitive Neuropsychiatry*. Published online 2013. doi:10.1080/13546805.2012.731390
53. Tombaugh TN. Trail Making Test A and B: Normative data stratified by age and education. *Archives of Clinical Neuropsychology*. Published online 2004. doi:10.1016/S0887-6177(03)00039-8
54. Greenblatt DJ, Allen MD, MacLaughlin DS, Harmatz JS, Shader RI. Diazepam absorption: Effect of antacids and food. *Clinical Pharmacology and Therapeutics*. 1978;24(5). doi:10.1002/cpt1978245600
55. Sled JG, Zijdenbos AP, Evans AC. A nonparametric method for automatic correction of intensity nonuniformity in MRI data. *IEEE Transactions on Medical Imaging*. 1998;17(1):87-97. doi:10.1109/42.668698
56. Chakravarty MM, Steadman P, van Eede MC, et al. Performing label-fusion-based segmentation using multiple automatically generated templates. *Hum Brain Mapp*. 2012;34(10):2635-2654. doi:10.1002/hbm.22092
57. Pipitone J, Park MTM, Winterburn J, et al. Multi-atlas segmentation of the whole hippocampus and subfields using multiple automatically generated templates. *NeuroImage*. 2014;101:494-512. doi:10.1016/j.neuroimage.2014.04.054
58. Winterburn JL, Pruessner JC, Chavez S, et al. A novel in vivo atlas of human hippocampal subfields using high-resolution 3T magnetic resonance imaging. *NeuroImage*. 2013;74:254-265. doi:10.1016/j.neuroimage.2013.02.003

59. Lindner T, Bolar DS, Achten E, et al. Current state and guidance on arterial spin labeling perfusion MRI in clinical neuroimaging. *Magnetic Resonance in Medicine*. 2023;89(5):2024-2047. doi:10.1002/mrm.29572
60. Benjamini Y, Hochberg Y. Controlling the False Discovery Rate: A Practical and Powerful Approach to Multiple Testing. *Journal of the Royal Statistical Society: Series B (Methodological)*. 1995;57(1):289-300. doi:10.1111/j.2517-6161.1995.tb02031.x
61. Zubieta JK, Heitzeg MM, Xu Y, et al. Regional Cerebral Blood Flow Responses to Smoking in Tobacco Smokers After Overnight Abstinence. *AJP*. 2005;162(3):567-577. doi:10.1176/appi.ajp.162.3.567
62. Niu X, Guo Y, Chang Z, et al. The correlation between changes in gray matter microstructure and cerebral blood flow in Alzheimer's disease. *Front Aging Neurosci*. 2023;15:1205838. doi:10.3389/fnagi.2023.1205838
63. Silva MA. Development of the WAIS-III: A Brief Overview, History, and Description. Published online 2008.
64. Oduola S, Das-Munshi J, Bourque F, et al. Change in incidence rates for psychosis in different ethnic groups in south London: findings from the Clinical Record Interactive Search-First Episode Psychosis (CRIS-FEP) study. *Psychological Medicine*. 2021;51(2):300-309. doi:10.1017/S0033291719003234
65. Hyder DSF, Sanganahalli B, Herman P, et al. Neurovascular and Neurometabolic Couplings in Dynamic Calibrated fMRI: Transient Oxidative Neuroenergetics for Block-Design and Event-Related Paradigms. *Frontiers in Neuroenergetics*. 2010;2. Accessed October 26, 2023. <https://www.frontiersin.org/articles/10.3389/fnene.2010.00018>
66. Robbins S, Evans AC, Collins DL, Whitesides S. Tuning and comparing spatial normalization methods. *Medical Image Analysis*. 2004;8(3):311-323. doi:10.1016/j.media.2004.06.009
67. Yang Q, Cai S, Chen G, et al. Fine scale hippocampus morphology variation cross 552 healthy subjects from age 20 to 80. *Front Neurosci*. 2023;17:1162096. doi:10.3389/fnins.2023.1162096
68. Hörtnagl H, Tasan RO, Wieselthaler A, Kirchmair E, Sieghart W, Sperk G. Patterns of mRNA and protein expression for 12 GABAA receptor subunits in the mouse brain. *Neuroscience*. 2013;236:345-372. doi:10.1016/j.neuroscience.2013.01.008
69. Engin E, Benham RS, Rudolph U. An Emerging Circuit Pharmacology of GABAA Receptors. *Trends Pharmacol Sci*. 2018;39(8):710-732. doi:10.1016/j.tips.2018.04.003
70. Kullmann DM, Ruiz A, Rusakov DM, Scott R, Semyanov A, Walker MC. Presynaptic, extrasynaptic and axonal GABAA receptors in the CNS: where and why? *Prog Biophys Mol Biol*. 2005;87(1):33-46. doi:10.1016/j.pbiomolbio.2004.06.003

71. Venkat P, Chopp M, Chen J. New insights into coupling and uncoupling of cerebral blood flow and metabolism in the brain. *Croat Med J*. 2016;57(3):223-228. doi:10.3325/cmj.2016.57.223
72. Möhler H, Okada T. Benzodiazepine Receptor: Demonstration in the Central Nervous System. *Science*. 1977;198(4319):849-851. doi:10.1126/science.918669
73. Rudolph U, Knoflach F. Beyond classical benzodiazepines: novel therapeutic potential of GABAA receptor subtypes. *Nat Rev Drug Discov*. 2011;10(9):685-697. doi:10.1038/nrd3502
74. Marques TR, Ashok AH, Angelescu I, et al. GABA-A receptor differences in schizophrenia: a positron emission tomography study using [11C]Ro154513. *Molecular Psychiatry*. 2021;26(6):2616. doi:10.1038/s41380-020-0711-y
75. Asai Y, Takano A, Ito H, et al. GABAA/Benzodiazepine receptor binding in patients with schizophrenia using [11C]Ro15-4513, a radioligand with relatively high affinity for $\alpha 5$ subunit. *Schizophrenia Research*. 2008;99(1):333-340. doi:10.1016/j.schres.2007.10.014
76. Busatto GF, Pilowsky LS, Costa DC, et al. Correlation between reduced in vivo benzodiazepine receptor binding and severity of psychotic symptoms in schizophrenia. *Am J Psychiatry*. 1997;154(1):56-63. doi:10.1176/ajp.154.1.56
77. Abi-Dargham A, Laruelle M, Krystal J, et al. No evidence of altered in vivo benzodiazepine receptor binding in schizophrenia. *Neuropsychopharmacology*. 1999;20(6):650-661. doi:10.1016/S0893-133X(98)00107-9
78. Lee JS, Lee JD, Park HJ, et al. Is the GABA System Related to the Social Competence Improvement Effect of Aripiprazole? An (18)F-Fluoroflumazenil PET Study. *Psychiatry Investig*. 2013;10(1):75-80. doi:10.4306/pi.2013.10.1.75
79. Frankle WG, Cho RY, Prasad KM, et al. In vivo measurement of GABA transmission in healthy subjects and schizophrenia patients. *Am J Psychiatry*. 2015;172(11):1148-1159. doi:10.1176/appi.ajp.2015.14081031
80. Kang JI, Park HJ, Kim SJ, et al. Reduced Binding Potential of GABA-A/Benzodiazepine Receptors in Individuals at Ultra-high Risk for Psychosis: An [18 F]-Fluoroflumazenil Positron Emission Tomography Study. *Schizophrenia Bulletin*. 2014;40(3):548-557. doi:10.1093/schbul/sbt052
81. Kiemes A, Gomes FV, Cash D, et al. GABAA and NMDA receptor density alterations and their behavioral correlates in the gestational methylazoxymethanol acetate model for schizophrenia. *Neuropsychopharmacol*. 2022;47(3):687-695. doi:10.1038/s41386-021-01213-0
82. Jacob TC. Neurobiology and Therapeutic Potential of $\alpha 5$ -GABA Type A Receptors. *Front Mol Neurosci*. 2019;12:179. doi:10.3389/fnmol.2019.00179

83. Wang DJJ, Chen Y, Fernández-Seara MA, Detre JA. Potentials and Challenges for Arterial Spin Labeling in Pharmacological Magnetic Resonance Imaging. *The Journal of Pharmacology and Experimental Therapeutics*. 2011;337(2):359. doi:10.1124/jpet.110.172577
84. Hawkins PCT, Wood TC, Vernon AC, et al. An investigation of regional cerebral blood flow and tissue structure changes after acute administration of antipsychotics in healthy male volunteers. *Hum Brain Mapp*. 2017;39(1):319-331. doi:10.1002/hbm.23844
85. Gill KM, Cook JM, Poe MM, Grace AA. Prior antipsychotic drug treatment prevents response to novel antipsychotic agent in the methylazoxymethanol acetate model of schizophrenia. *Schizophrenia Bulletin*. Published online 2014. doi:10.1093/schbul/sbt236
86. Peris-Yague A, Kiemes A, Cash D, et al. Region-specific and dose-specific effects of chronic haloperidol exposure on [3H]-flumazenil and [3H]-Ro15-4513 GABAA receptor binding sites in the rat brain. *Eur Neuropsychopharmacol*. 2020;41:106-117. doi:10.1016/j.euroneuro.2020.10.004
87. Murphy K, Harris AD, Diukova A, et al. Pulsed arterial spin labeling perfusion imaging at 3 T: estimating the number of subjects required in common designs of clinical trials. *Magnetic Resonance Imaging*. 2011;29(10):1382-1389. doi:10.1016/j.mri.2011.02.030
88. Liang P, Xu Y, Lan F, Ma D, Li K. Decreased Cerebral Blood Flow in Mesial Thalamus and Precuneus/PCC during Midazolam Induced Sedation Assessed with ASL. *Neuroinform*. 2018;16(3):403-410. doi:10.1007/s12021-018-9368-y

Table and Figure Legends

Table 1. Demographic and clinical characteristics.

CAARMS: comprehensive assessment of at-risk mental states; CHR-P: clinical high-risk for psychosis; HC: healthy control; IQ: intelligent quotient; WAIS: Wechsler adult intelligence scale.

Figure 1. ASL preprocessing and analysis pipeline. (A) Diagram showing pipeline for region-of-interest analysis. T1 images were preprocessed (1) and run through the MAGeT Brain toolbox (2), generating masks for grey matter, whole hippocampus, and hippocampal subfields. Using T1->T2->PD transformations calculated from registration (3 & 4), these masks were resampled (5) to CBF space (single resampling step) to allow for sampling of rCBF in native space (6). **(B)** Demonstration of optimum registration between CBF map, masks, and T1 images. **(C)** Schematic showing steps for voxel-wise analysis for CHR-P placebo vs. diazepam. A study-specific template was generated (1) from participant-averages (averaged structural scans from both drug conditions), and the CBF maps were resampled (2) to common space (single resampling step calculated from PD->T2->T1->template transformations/deformations).

hipp: hippocampus; PD: proton density; rCBF: regional cerebral blood flow; ROI: region-of-interest.

Figure 2. Region-of-interest rCBF findings. Absolute rCBF for HC and CHR-P participants (under placebo and diazepam) for **(A)** total grey matter, **(B)** hippocampus, and **(C)** hippocampus subfields, including **(D)** CA1, **(E)** subiculum, and **(F)** CA4/DG.

CHR-P: clinical high-risk for psychosis; DG: dentate gyrus; rCBF: regional cerebral blood flow

ns = non-significant; * < 0.05; *** < 0.001.

Figure 3. Voxel-wise grey matter rCBF findings. *T*-statistic map of drug condition (diazepam vs. placebo) effect on grey matter rCBF at the whole-brain level in CHR-P individuals from voxel-wise linear mixed effects models, thresholded and displayed at 5% FDR. Peak regions with *t*-statistic > 5 have been labelled. Colour bars denote *t*-statistics which reflect 5% FDR threshold (i.e., ± 2.498) and less (i.e., up to ± 6.68) for both contrasts (diazepam < placebo in blue/green and placebo < diazepam in yellow/red). N.B. there were no significant voxels at 5% FDR threshold for placebo < diazepam.

DLPFC: dorsolateral prefrontal cortex; MCC: middle cingulate cortex; NAc: nucleus accumbens; OFC: orbitofrontal cortex; rCBF: regional cerebral blood flow

Figure 4. Association between baseline clinical characteristics and diazepam-induced hippocampal rCBF changes. Pearson correlations between change in absolute hippocampal rCBF by diazepam vs. placebo and baseline clinical characteristics (at assessment visit): **(A)** positive symptoms, **(B)** negative symptoms, **(C)** cognitive functioning, **(D)** social functioning, **(E)** role functioning, **(F)** anxiety symptoms, and **(G)** depression symptoms.

N.B. for panels D & E a higher score denotes *less* impairment, whilst for all other panels a higher score/time denotes *higher* symptom severity. Shaded light green areas reflect 95% confidence intervals.

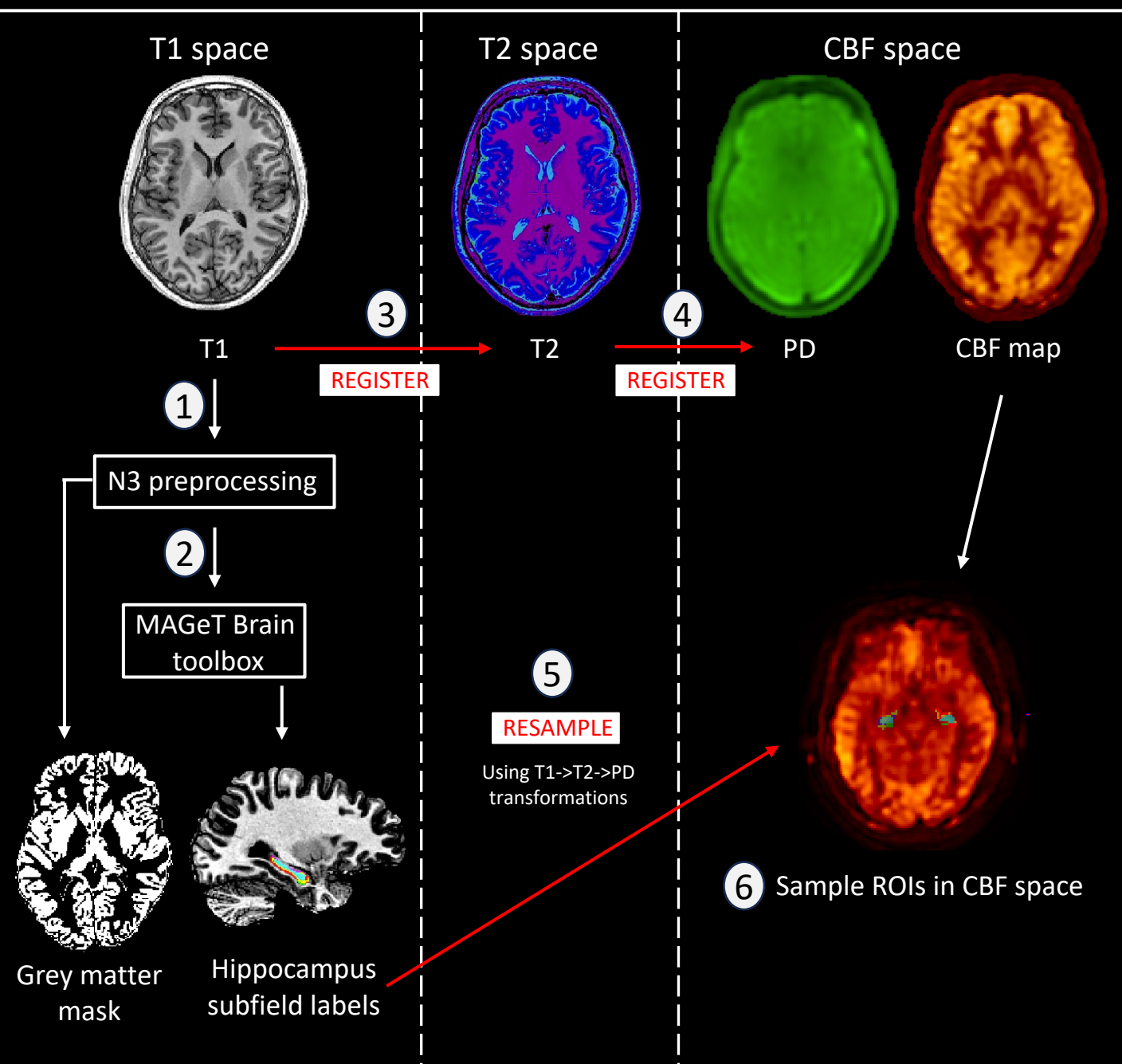
rCBF: regional cerebral blood flow.

Table 1. Demographic and clinical characteristics

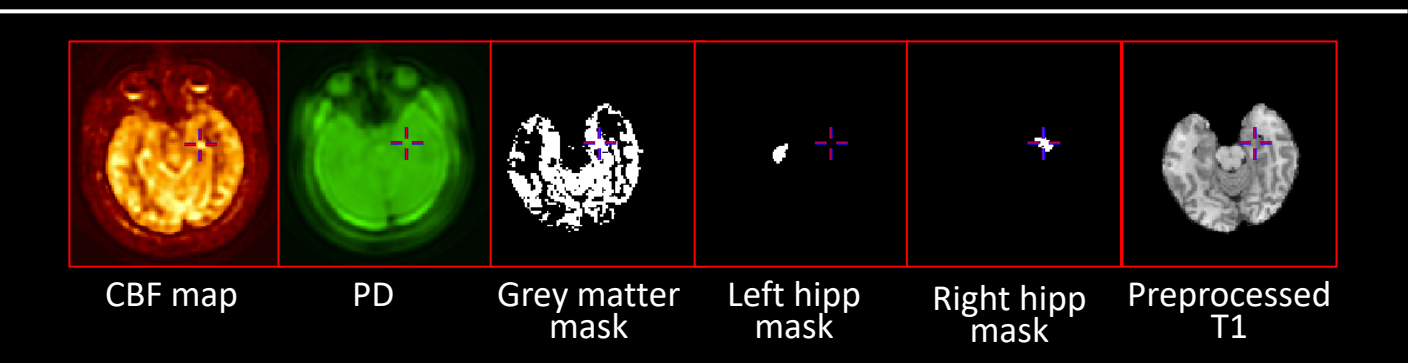
	CHR-P (n = 24)	HC (n = 21)	t/ χ^2	p
Age (years; mean \pm SD)	24.1 \pm 4.8	26.5 \pm 5.1	1.7	0.09
Sex (male/female; n)	9/15	10/11	0.4	0.49
Ethnicity (n)			13.9	0.007
White	11	16	-	-
Asian	2	6	-	-
Black	6	0	-	-
Mixed or multiple	4	0	-	-
Other	1	0	-	-
IQ (WAIS-III short version ⁶³ ; mean \pm SD)	97.6 \pm 21.6	119.3 \pm 16.7	4.6	<0.001
Current daily cigarette use, n (%)	8 (33)	2 (9)	3.7	0.055
Current alcohol use, n (%)	18 (75)	19 (90)	1.8	0.177
Current cannabis use, n (%)	7 (29)	4 (19)	0.6	0.431
CAARMS ⁴⁷ score (mean \pm SD)				
Positive symptoms	46.4 \pm 12.9	NA	-	-
Negative symptoms (n=21)	29.1 \pm 24.7	NA	-	-
Total (n=21)	75.9 \pm 29.9	NA	-	-
Global functioning score ⁴⁹ (mean \pm SD)				
Social	6.4 \pm 1.5	NA	-	-
Role	6.1 \pm 1.8	NA	-	-
Hamilton scale score (mean \pm SD)				
Anxiety ⁵⁰ (n=22)	17.1 \pm 8.5	NA	-	-
Depression ⁵¹ (n=21)	13.9 \pm 6.9	NA	-	-
Current antidepressant medication, n (%)	9	NA	-	-
Current or prior antipsychotic medication, n (%)	0	NA	-	-
Current benzodiazepine/hypnotic medication, n (%)	0	NA	-	-

CAARMS: comprehensive assessment of at-risk mental states; CHR-P: clinical high-risk for psychosis; HC: healthy control; IQ: intelligent quotient; WAIS: Weschler adult intelligence scale

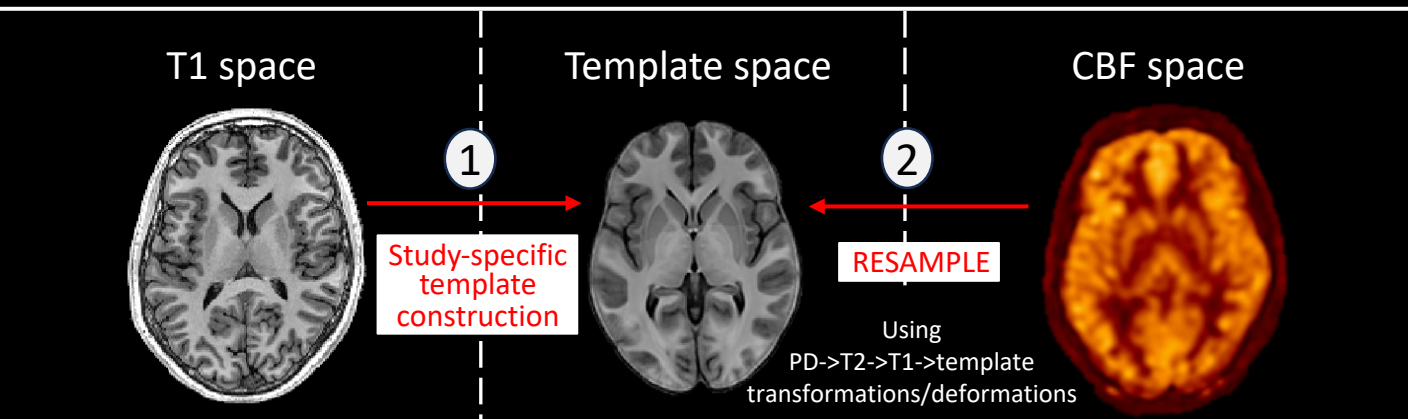
A ROI analysis

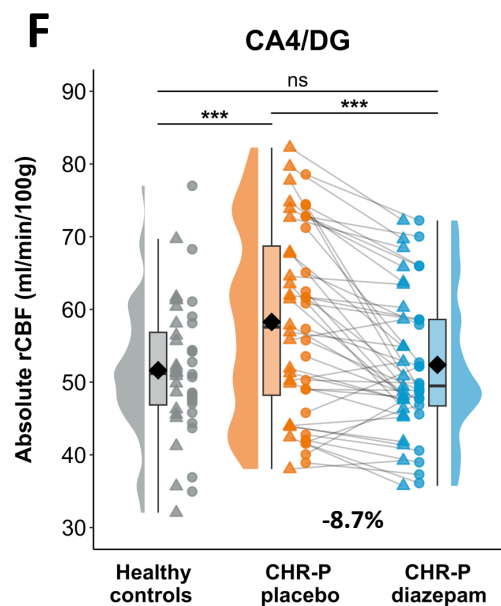
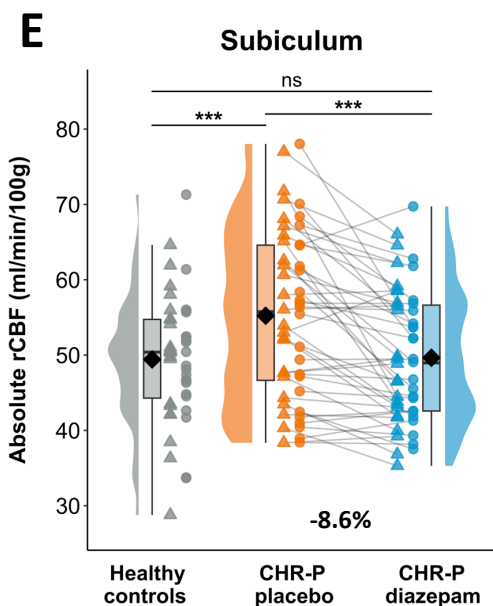
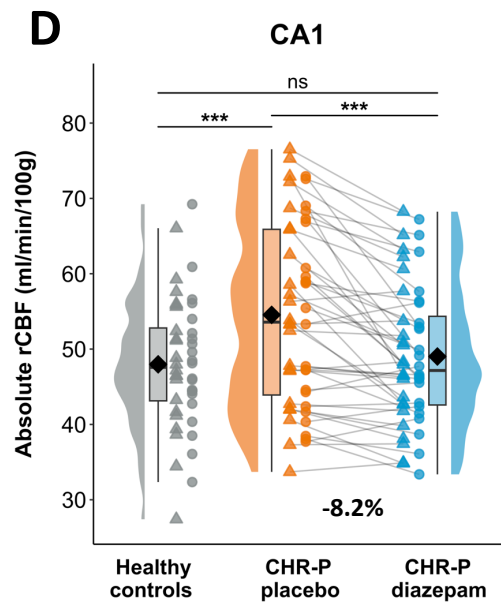
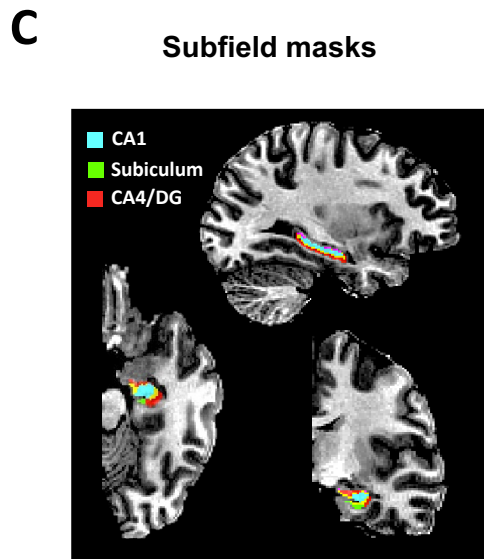
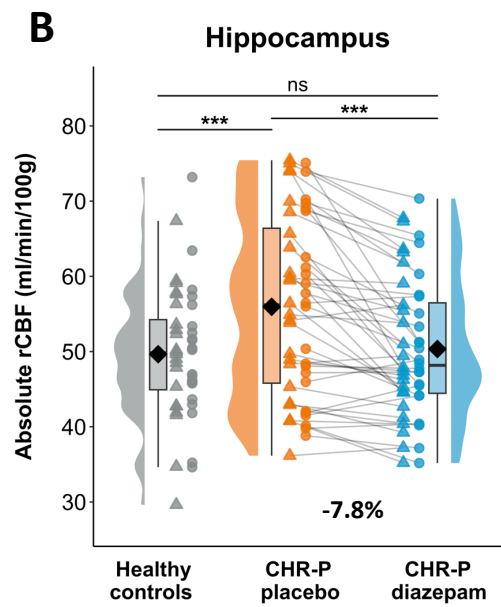
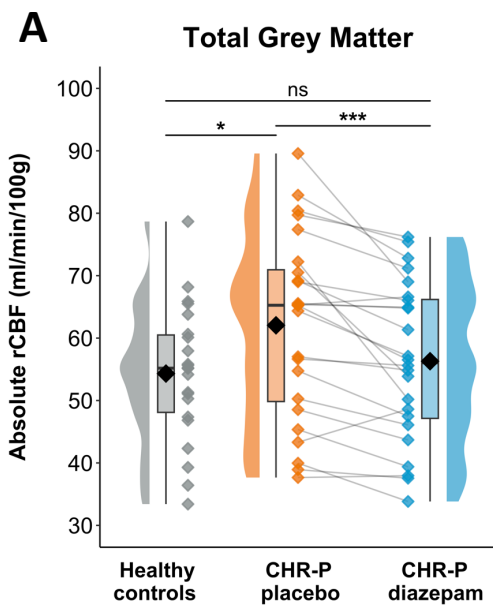


B Labels in CBF space for ROI analysis



C Voxel-wise analysis





Hemisphere
 ◇ Combined △ Left ○ Right

