

1 Blood-brain barrier integrity decreases with higher blood
2 pressure, a 7T DCE-MRI study

3

4 Marieke van den Kerkhof^{1,2}, Joost J.A. de Jong^{1,2}, Paulien H.M. Voorter^{1,2}, Alida Postma^{1,2},
5 Abraham A. Kroon^{3,4}, Robert J. van Oostenbrugge^{2,4,5}, Jacobus F.A. Jansen^{1,2,6}, Walter H. Backes^{1,2,4}

6

7 ¹Department of Radiology & Nuclear Medicine, Maastricht University Medical Center, Maastricht,
8 The Netherlands;

9 ²School for Mental Health and Neuroscience, Maastricht University, Maastricht, The Netherlands;

10 ³Department of Internal Medicine, Maastricht University Medical Center, Maastricht, The
11 Netherlands;

12 ⁴School for Cardiovascular Diseases, Maastricht University, Maastricht, The Netherlands;

13 ⁵Department of Neurology, Maastricht University Medical Center, Maastricht, The Netherlands;

14 ⁶Department of Electrical Engineering, Eindhoven University of Technology, Eindhoven, the
15 Netherlands

16

17 Corresponding author: W.H. Backes, Department of Radiology & Nuclear Medicine, Maastricht
18 University Medical Center, PO Box 5800, 6202 AZ, Maastricht, the Netherlands. E-mail:
19 w.backes@mumc.nl

20

21 Word count: 5882

22

23 Short title: Blood-brain barrier leakage and high blood pressure

24

25

26

27 ***Abstract***

28 **Background**

29 Blood-brain barrier (BBB) integrity is presumed to be impaired in hypertension, resulting
30 from cerebral endothelial dysfunction. Hypertension antedates various cerebrovascular
31 diseases, such as cerebral small vessel disease (cSVD), and is a risk factor for developing
32 neurodegenerative diseases for which BBB disruption is a preceding pathophysiological
33 process. In this study, we investigated the relation between hypertension, current blood
34 pressure and BBB leakage in human subjects.

35 **Methods**

36 BBB leakage was determined in twenty-two patients with hypertension and nineteen
37 normotensive controls, age- and sex-matched (median age[range]:65[45-80] years,19 males),
38 using a sparsely time-sampled contrast-enhanced 7 Tesla MRI protocol. Structural cSVD
39 markers were visually rated. Multivariable regression analyses, adjusted for age, sex,
40 cardiovascular risk factors and cSVD markers, were performed to determine the relation
41 between hypertension status, systolic and diastolic blood pressure (SBP and DBP), mean
42 arterial pressure (MAP), drug treatment, and BBB leakage.

43 **Results**

44 Both hypertensive and normotensive participants showed mild scores of cSVD. BBB leakage
45 did not differ between hypertensive and normotensive participants, however was significantly
46 higher for SBP, DBP and MAP in the cortex, and DBP and MAP in the grey matter.
47 Effectively treated patients showed less BBB leakage than those with current hypertension.

48 **Conclusion**

49 BBB integrity in the total and cortical grey matter decreases with increasing blood pressure,
50 but is not related to hypertension status. These findings show that BBB disruption already
51 occurs with increasing blood pressure, before the presence of overt cerebral tissue damage.

52 Additionally, our results suggest that effective antihypertensive medication has a protective
53 effect on the BBB.

54

55 Registered at: <https://trialsearch.who.int/>; Unique identifier: NL7537

56 Keywords: blood-brain barrier leakage, DCE-MRI, 7 Tesla, hypertension, high blood pressure

57

58

59

60

61

62

63

64

65

66

67

68

69

70

71

72

73

74

75

76

77

78

79 **Non-standard Abbreviations and Acronyms**

80 BBB – blood-brain barrier

81 cSVD – cerebral small vessel disease

82 DBP – diastolic blood pressure

83 DCE-MRI – dynamic contrast enhanced magnetic resonance imaging

84 GM – grey matter

85 MAP – mean arterial pressure

86 PVS – perivascular spaces

87 ROI – region of interest

88 SBP – systolic blood pressure

89 TE – echo time

90 TR – repetition time

91 VIF – vascular input function

92 WM – white matter

93 WMH – white matter hyperintensities

94

95

96

97

98

99

100

101

102

103

104

105 ***Introduction***

106 Hypertension is a highly prevalent condition, and its incidence increases in an aging
107 population.¹ In addition to the heart and kidneys, the brain is highly susceptible to high blood
108 pressure, which consequently may result in neurological diseases, such as stroke and
109 dementia.² Hypertension causes vascular remodelling, which includes both structural and
110 functional alterations of the vessel walls. Over time, these changes lead to endothelial
111 dysfunction and to breakdown of the blood-brain barrier (BBB), with a detrimental effect on
112 the neuronal microenvironment and brain health.^{3,4}

113 The BBB is a highly specialized structure in the cerebral vessel walls and preserves the
114 biological homeostasis of the central nervous system through selective supply of nutrients to
115 the brain tissue and removal of waste products.⁵ Loss of BBB integrity increases the
116 permeability of this barrier, and thereby allows neurotoxins to accumulate in the brain tissue.

117 Although hypertension is assumed to have a negative effect on BBB integrity, the precise
118 pathophysiology has not yet been elucidated. Potentially, vascular oxidative stress and
119 inflammation lead to dysfunction of endothelial cells and degeneration of pericytes,
120 consequently resulting in a disrupted BBB.³ A large number of studies have investigated BBB
121 impairment and hypertension in animal studies and found an increased permeability in several
122 regions for hypertensive models.⁶ Others reported subtle BBB impairment in human patients
123 with disorders such as preeclampsia, cerebral small vessel disease (cSVD), and dementia.⁷⁻¹⁰

124 While it is often assumed that hypertension leads to BBB disruption, the relation of
125 hypertension or high blood pressure and BBB permeability has not yet been investigated
126 explicitly in human subjects.

127 The most commonly used technique to measure BBB integrity is dynamic contrast-enhanced
128 (DCE) MRI. This method uses the intravenous administration of a paramagnetic contrast
129 agent, which is subsequently followed over time by acquiring a continuous series of MRI

130 scans after contrast administration. The leakage of the contrast agent from the blood
131 circulation to the brain tissue is quantified by the signal intensity changes, and converting
132 these temporal changes to blood concentrations. Recently, we proposed a highly sensitive
133 DCE-method at 7 Tesla, where instead of the commonly continuously acquired T₁-weighted
134 images, only two quantitative post-contrast T₁-maps were acquired.¹¹
135 In the current study, we investigated the relation between hypertension, blood pressure and
136 BBB leakage in human subjects. Therefore, we applied the sparsely time-sampled, dynamic
137 contrast-enhanced MRI protocol to patients with essential hypertension and normotensive,
138 healthy controls, to investigate group differences in BBB leakage rates.

139

140 ***Methods***

141 *Data availability*

142 The data that support the findings of this study are available from the corresponding author
143 upon reasonable request.

144

145 *Study population*

146 Between July 2019 and July 2021, 23 patients with essential hypertension and 20
147 normotensive, healthy controls were included, matched on age and sex. The patients with
148 essential hypertension were recruited from the outpatient internal medicine clinic of the
149 Maastricht University Medical Center, The Netherlands, and through a recruitment website
150 (hersenonderzoek.nl). Essential hypertension was defined as a mean blood pressure of ≥ 135
151 mmHg systolic or ≥ 85 mmHg diastolic, or both, when measured for 30 minutes with an
152 automated blood pressure monitor. Additionally, participants who took antihypertensive
153 medication were also defined as hypertensive. The recruitment of healthy controls took place
154 via advertisements in the local newspaper, in the hospital, and on a recruitment website

155 (hersenonderzoek.nl). Inclusion criteria for all participants were: age between 30-90 years old
156 and eligibility to undergo 7 Tesla MRI with contrast agent administration. Exclusion criteria
157 were history of secondary hypertension, diabetes mellitus, ischemic heart disease,
158 hemorrhagic stroke, or preeclampsia, and no diagnosis of obstructive sleep apnea syndrome,
159 body mass index (BMI) > 32 kg/m², and contraindications for the gadolinium-containing
160 contrast agent, including glomerular filtration rate (eGFR) <30 mL/min.

161 Before study participation, all participants gave written informed consent. The study was
162 approved by the local Medical Ethical Committee of Maastricht University Medical Center
163 (Trial NL7537).

164

165 *Demographics*

166 Demographics were recorded, which included age, sex, type of antihypertensive medication
167 (if applicable), other types of medication (if applicable), BMI, smoking status (current and
168 history) and alcohol use.

169

170 *Blood pressure measurement*

171 All participants underwent automated blood pressure measurement (Dinamap, GE Healthcare,
172 Chicago, USA) preceding the MRI-scan, which was performed on the same day. This
173 measurement was performed by the same trained investigator for all participants (MvdK).
174 First, the blood pressure was consecutively determined at both arms with a single
175 measurement. The arm which acquired the highest blood pressure was used for the subsequent
176 measurements every 5 minutes during 30-45 minutes. Throughout this time, the participant
177 was kept seated solitary in the room, and was instructed to stay awake. To obtain the blood
178 pressure characteristics, the last five measurements were averaged and used in the data

179 analysis, yielding systolic and diastolic blood pressure (SBP and DBP, respectively), and
180 mean arterial pressure (MAP).

181

182 *MRI*

183 Brain images were acquired with a 7 Tesla MRI (Magnetom, Siemens Healthineers, Erlangen,
184 Germany) using a 32-channel phased-array head coil. Dielectric pads were placed on both
185 sides of the participant's neck, proximal to the temporal lobes, for improvement of B1+ field
186 homogeneity across the brain. Anatomical and DCE-images were acquired. The DCE-
187 protocol consisted of quantitative precontrast 3D T1 mapping using a Magnetization-Prepared
188 2 Rapid Acquisition Gradient Echo (MP2RAGE) sequence (TR/TE = 5000/2.47 ms, TI₁/TI₂ =
189 2700/900 ms, cubic voxel size = 0.7 mm, acquisition time = 8:00 min:s), followed by a 3D
190 fast gradient echo T1-weighted perfusion (volumetric interpolated brain examination, VIBE)
191 sequence (TR/TE = 3.7/1.3 ms, cubic voxel size = 2.0 mm, acquisition time = 2:47 min:s).
192 After the first three volumes were acquired, the contrast agent (1.0 molar Gadobutrol, 3 mL
193 for each participant) was injected with an infusion rate of 0.3 mL/s followed by a saline flush
194 (20 mL). Finally, two postcontrast T1 maps (TR/TE = 4000/2.32 ms, TI₁/TI₂ = 2700/900 ms,
195 cubic voxel size = 1.2 mm, acquisition time = 4:16 min:s) were acquired, of which the first
196 postcontrast T1 map was acquired immediately after the dynamic perfusion scan series and
197 the last T1 map was acquired approximately 25 minutes after the start of CA injection. More
198 details about the scan parameters and this protocol are reported in Table S1 and Kerkhof et al.
199 (2021).¹¹ For optimal segmentation of grey matter (GM) and white matter (WM), a T2-
200 weighted fluid-attenuated inversion recovery (FLAIR) sequence (TR/TE/TI = 8000/303/2330
201 ms; cubic voxel size: 1 mm, acquisition time: 6:59 min:s) was acquired in between the two
202 postcontrast T1-maps. Additionally, for the rating of microbleeds and perivascular spaces
203 (PVS), a susceptibility weighted imaging (SWI) sequence was acquired before contrast

204 administration, and T2-weighted images were acquired after contrast administration,
205 respectively.

206

207 *Image analysis*

208 Preprocessing of the quantitative T1 maps consisted of bias field correction, skull stripping
209 and gradient distortion correction. To correct for head displacements, all acquired images
210 were spatially registered to the same reference image, which was the first postcontrast T1
211 map. Subsequently, GM and WM were automatically segmented using the precontrast T1 and
212 FLAIR images as input (FreeSurfer version 6.0.5).¹² The segmentations were visually
213 verified, and manually corrected when required. This resulted in four tissue regions of interest
214 (ROI): total GM and total WM, cortical and deep GM). The subject-specific vascular input
215 function (VIF) was derived from an ROI manually delineated in the superior sagittal sinus.

216

217 The leakage maps were determined by applying the graphical Patlak approach to the
218 concentration time-courses of each brain tissue voxel and the VIF, resulting in a Patlak plot,
219 in which the slope represents the BBB leakage rate, K_i [min^{-1}], and the intercept yields the
220 blood plasma volume fraction, v_p [-].¹³ Per ROI, the mean K_i and v_p of all voxels within each
221 ROI were calculated and used as physiological measures. Outlier correction was performed by
222 considering the K_i and v_p values in these ROIs located in the 95% confidence interval.¹¹

223 All data analyses were performed using custom-made code in the Matlab programming
224 environment (2019b, 9.2.0; Mathworks, Nattick, MA, USA).

225

226 *cSVD rating*

227 Four cSVD-markers, i.e., white matter hyperintensities (WMH), lacunar infarcts, microbleeds
228 and MRI-visible PVS, were visually rated by one trained neuroscientist (MvdK: >2 years of

229 experience) under supervision of an experienced neuroradiologist (AAP: >20 years of
230 experience) and were combined into a global cSVD-score per participant.¹⁴ The WMH load
231 was rated using the Fazekas scale.¹⁵ When (early) confluent deep white matter
232 hyperintensities were present (Fazekas score 2 and 3) or irregular periventricular
233 hyperintensities which extended into the deep white matter (Fazekas score 3), one point was
234 assigned to the global cSVD-score.¹⁴ Furthermore, one point was assigned when 1 or more
235 asymptomatic lesions, i.e., lacunar infarcts, were present.¹⁶ Another point was assigned when
236 1 or more microbleeds were present in the basal ganglia, since these were associated with
237 hypertension.¹⁶ Lastly, PVS were rated in the basal ganglia, as these have also been shown to
238 be associated with hypertension.^{17,18} The PVS score was established in the slice with the
239 highest number of PVS, and graded in four groups: 0: ≤ 10 , 1: 11-25, 2: 26-40, 3: ≥ 41 PVS,
240 as previously published.¹⁹ A last point was assigned to the cSVD-score if moderate to
241 extensive PVS (score 1-3) were present. These points combined could yield a maximum
242 cSVD-score of 4 points.

243

244 *Statistics*

245 To examine the differences in characteristics between hypertensive patients and controls,
246 Pearson chi-square or Fisher's exact tests were applied for categorical variables when
247 appropriate. For continuous variables independent Student's *t*-tests were performed. Outliers
248 were defined as a data point with a deleted studentized residual higher than 3.5, and Cook's
249 distance higher than 1.

250 First, we set out to determine the association between K_i or v_p in the ROIs (i.e., total GM, total
251 WM, deep GM, cortical GM) with hypertension status by performing multivariable linear
252 regression analyses, corrected for age and sex. Additionally, multivariable linear regression
253 analyses corrected for age and sex were applied to investigate the relation between the

254 measured blood pressure characteristics – SBP, DBP and MAP – and the K_i and v_p in the brain
255 ROIs. Furthermore, these analyses were repeated while alternately adjusting for relevant
256 cardiovascular risk factors, which are BMI, alcohol use, history of smoking, and hematocrit
257 level. Intake of antihypertensive medication and cholesterol lowering medication was also
258 considered alternately in the regression analyses. Lastly, to study the potential influence of
259 cSVD on the associations, the analyses were adjusted by total cSVD score.

260 An additional post-hoc analysis was performed to explore the difference in leakage measures
261 between the subgroups of hypertensive patients, which were based on the measured blood
262 pressure on the day of the MRI-scan, and their blood pressure medication intake. This resulted
263 in three subgroups: NT+: patients who had normal blood pressure levels, using
264 antihypertensive medication (n=12), HT-: patients with high blood pressure, without using
265 antihypertensive medication (n=5), and HT+: patients with high blood pressure, despite of
266 using antihypertensive medication (n=5). To explore the between-group differences, ANOVA
267 with post-hoc Tukey tests were performed.

268 A P -value < 0.05 was considered statistically significant. All statistical analyses were
269 conducted using SPSS (version 28.0, Chicago, IL).

270

271 **Results**

272 The group characteristics of the hypertensive patients (n = 22 with a mean age of 66 years of
273 whom 64% are female) and the controls (n = 19 with a mean age of 62 years, of whom 42%
274 are female) who were included for the final analysis are listed in Table 1. One control
275 participant and one hypertensive patient were identified as outliers in terms of leakage rates
276 and therefore excluded from further analysis. SBP was found to be significantly higher for the
277 hypertensive patients than for the controls. No significant differences in blood pressure
278 measures, age, sex, cardiovascular risk factors, blood measures, or cSVD scores were found.

279 Examining the association between sex and K_i showed that the leakage rate was significantly
280 higher in males ($P < 0.001$ in all regions), but no significant relation with age was found.

281
282 The K_i in hypertensive patients did not significantly differ from the K_i in healthy controls,
283 while adjusting for age and sex (Table 2). In contrast, v_p was significantly higher for
284 hypertensive patients in all GM ROIs and showed a comparable trend for the entire WM.
285 Positive significant relations of K_i with systolic and DBP and MAP were obtained in the
286 cortical GM and for DBP and MAP in total GM (Table 3). K_i versus SBP yielded a positive
287 trend towards significance in total GM. No significant relations were found for SBP, DBP and
288 MAP with K_i in WM and deep GM. For v_p , no significant relations were found with blood
289 pressure measures.

290 The scatterplots in Figure 1 show the relation between K_i and MAP in the four ROIs in more
291 detail. Supplemental Figure 1 illustrates the relation between v_p and MAP in the four ROIs.

292

293 *Cardiovascular risk factors*

294 The obtained relations between K_i and DBP, and K_i and MAP remained significant after
295 alternately adjusting for cardiovascular risk factors, medication intake and cSVD score. When
296 considering BMI, alcohol intake, and cSVD score in the regression analyses with SBP in the
297 cortical GM, the adjusted relations did not remain significant, but still showed a positive trend
298 towards significance ($\beta = 0.216$, $P = 0.062$, $\beta = 0.245$, $P = 0.053$ and $\beta = 0.245$, $P = 0.059$,
299 respectively). For total GM, the relation was found to be significant when correcting for
300 history of smoking or intake of cholesterol medication ($\beta = 0.231$, $P = 0.050$ and $\beta = 0.233$, P
301 $= 0.049$, respectively).

302

303

304 *Subgroup analyses*

305 Post-hoc analysis of the hypertensive subgroups (HT+, HT-, and NT+) revealed a trend
306 towards significance of higher K_i in HT+ compared to NT+ patients for the grey matter
307 regions (cortex: $P = 0.098$, total GM: $P = 0.088$, deep GM: $P = 0.058$), but not for WM. After
308 pooling of the HT- and HT+ patients, the NT+ group demonstrated lower leakage rates than
309 the combined HT group for the total and cortical GM ($P = 0.021$ and $P = 0.016$, respectively).
310 Figure 3 shows the corresponding boxplot for the cortex as an example. Boxplots for K_i in the
311 total GM, deep GM and total WM can be found in Supplemental Figure 2. Post-hoc analysis
312 for v_p did not show significant differences between subgroups.

313

314 ***Discussion***

315 In this study, we set out to investigate the relationship between hypertension, SBP, DBP and
316 MAP, and BBB leakage measured with a highly sensitive DCE-protocol at 7 Tesla MRI in
317 human subjects. Based on dichotomous hypertension status, we found no relation with BBB
318 leakage. For the individual blood pressure characteristics, i.e., SBP, DBP and MAP, a higher
319 blood pressure was associated with stronger BBB leakage in the grey matter and not in the
320 white matter. The results were independent of cardiovascular risk factors and presence of
321 cSVD imaging markers. Medically well treated patients (NT+) showed less BBB leakage than
322 patients with current hypertension (pooled HT- and HT+ group).

323

324 The BBB is often assumed to become impaired due to the pathophysiological pathway as a
325 consequence of hypertension.^{2,6} To investigate whether increased blood pressure impacts the
326 BBB integrity prior to the presence of overt cerebral tissue damage, this research focused on
327 differences in BBB leakage between hypertensive patients with no known cerebrovascular
328 disease and normotensive controls. The lack of differences in BBB leakage found between the

329 hypertensive and normotensive group, is likely due to the similarities of the blood pressure
330 characteristics of the two groups. SBP was the only blood pressure measure found to be
331 higher in the hypertensive patients. In addition to the groups being matched beforehand on
332 age and sex, the other cardiovascular risk factors, blood measures, and cSVD scores were also
333 found to be similar across the two groups. However, we observed a large variation in BBB
334 leakage in the hypertensive patients (NT+, HT-, and HT+), which also could explain the
335 absence of a difference in BBB leakage between the hypertension versus normotension group.
336 This demonstrates a large influence of current blood pressure (as opposed to hypertension
337 status) on the BBB integrity. The observed relation between current blood pressure and BBB
338 leakage suggests that a higher blood pressure could lead to endothelial dysfunction, impairing
339 the permeability of the barrier.

340

341 In the GM, a positive relation between blood pressure and BBB leakage was obtained. In
342 contrast, no relation was obtained within the WM. Our findings imply that in grey matter,
343 especially in the well perfused cortical grey matter, subtle leakage is easier, and therefore
344 earlier, to detect than in the less perfused white matter. Additionally, the tissue around the
345 basal ganglia, thus WM, is more protected from the effects of cerebrovascular dysfunction as
346 these arterioles contain two layers, whereas the superficial perforating arterioles have only
347 one layer.²⁰

348

349 Previous studies using hypertension models in animals showed that a higher BBB
350 permeability is related to hypertension^{6,21,22}, although some studies did not find any
351 differences in hypertensive animal models.^{23,24} It should be noted that these studies use
352 different methods of measuring BBB leakage, as they use other contrast agents, such as
353 fluorescently labeled dextran or lectin.^{21,22,25} Furthermore, these studies are able to dissect the

354 brain after imaging, to investigate the neurovascular properties in more detail. Studies on
355 BBB leakage in humans often focus on diagnosed cerebrovascular diseases, such as cSVD
356 and (mixed) dementia.^{8,9,26,27} These studies demonstrated stronger BBB leakage in these
357 patients, and showed that hypertension is a significant covariate. However, they did not
358 investigate hypertension as a separate condition, or in subjects without overt neurovascular
359 disease.

360 The associations with blood plasma volume fraction were contrary to the findings of the
361 leakage rate in this study. Differences in blood plasma volume fraction were found in
362 hypertensive patients versus normotensive controls, based on dichotomous status, while no
363 relations were found for the current blood pressure measures. These results are contradictory
364 to the pathway of a reduced cerebral blood flow, which is related to the blood plasma volume
365 fraction, in hypertension. However, the higher blood plasma volume in hypertensive patients
366 is not indicative of an advanced cerebrovascular disease stage, as vessels tend to narrow
367 (lower blood volume or flow) in a more advanced hypertensive disease state.²⁸

368

369 As previous studies showed an association between age and sex, and BBB leakage, we
370 initially adjusted for these two covariates.³¹⁻³³ We indeed found a strong correlation between
371 sex and leakage measures, indicating that women have a lower BBB permeability compared
372 to men. This effect could be explained by the hormonal differences between men and women,
373 as female hormones, such as estrogen, may act neuroprotective.^{32,33}

374

375 *Cardiovascular risk factors*

376 This study assessed several cardiovascular risk factors, as well as a cSVD score which was
377 rated on a scale based on previous literature and reflects the total cSVD burden.^{14,29} All
378 observed associations remained significant after adjusting for these covariates. In contrast to

379 our findings, previous studies showed that cSVD was associated with higher BBB leakage.^{8,30}
380 The low number of cSVD markers observed in our population compared to the more severe
381 cSVD rates in other studies could account for this divergence. We therefore emphasize that in
382 this study, we set out to measure this specific consequence of microvascular damage in a
383 rather early stage of (or mild) cSVD.

384

385 *Hypertension subgroups*

386 As mentioned above, our results show a large effect on the BBB leakage rate of the actual
387 blood pressure, measured preceding the MRI examination, rather than hypertension status.
388 While comparing the leakage rates between the hypertensive subgroups, a trend of stronger
389 BBB leakage was found in hypertensive patients with inadequate antihypertensive medication
390 (HT+), compared to patients with effective antihypertensive medication (NT+). The HT-
391 group tends to be associated with higher BBB leakage values than the NT+ group, but only
392 slightly lower values than the HT+ group. As the HT+ group does not show significantly
393 higher or lower values than the HT- group, and the combined HT group obtained higher
394 leakage values than the NT+ group, we suggest that effective medication has a protective
395 effect on BBB permeability. Previous studies also have shown such restoring effects of
396 specific antihypertensive medication in hypertensive rat models.⁶ However, it is important to
397 be aware of the small sample size of the subgroups.

398

399 *Strengths and limitations*

400 This study focused on BBB leakage in patients with high blood pressure, without known
401 cerebrovascular diseases, compared to normotensive controls. The strength of this study
402 design is that it enabled the investigation of early BBB changes, before neurovascular damage
403 is visible on the MRI scans and before subjects experience neurological complaints.

404 Furthermore, a sparsely sampled, interleaved MRI protocol was used to obtain subtle BBB
405 measures, which shortened the scanning time substantially compared to frequently used DCE
406 sequences lasting up to 30 minutes. This protocol also allows for other imaging sequences to
407 be scanned in between, allowing to use the scanning time more efficient. Furthermore, using
408 high-field 7T MRI enhances the signal-to-noise ratio with increasing spatial resolution,
409 thereby enabling improved measurement of subtle BBB leakage.

410 There are several methodological considerations. The blood pressure was measured using a
411 30-minute during automatic protocol, although the most accurate method would be 24-hour
412 ambulatory blood pressure monitoring. Regardless, the blood pressure measurement protocol
413 in this study is validated to be the second most accurate method.³⁴

414 As discussed, the cSVD scores were relatively low in our population. Future studies should
415 also include participants with higher cSVD scores to improve the ability of investigating BBB
416 leakage in patients with hypertension with varying amounts of visibly developed
417 neurovascular disease.

418 Larger sample sizes in the three hypertension subgroups, or a longitudinal study design
419 (before and after start of antihypertensive treatment) would also be recommended in future
420 research that focuses on studying medication effects on BBB leakage in more detail. While
421 previous studies show varying effects between the different types of antihypertensive
422 medication, our study did not have enough power in the subgroups to draw definite
423 conclusions, as our study was not designed for this specific aim.

424

425 *Perspectives*

426 To summarize, this study aimed to investigate the relationship between BBB integrity, high
427 blood pressure and hypertension. For the dichotomous hypertension status, no significant
428 effects of BBB leakage were found. However, when looking at continuous blood pressure

429 measures, a strong positive relation was found between leakage in the cortical grey matter and
430 current blood pressure. A protective function of antihypertensive medication was observed,
431 but future studies should include more hypertensive patients or engage a longitudinal study
432 design to investigate this in more detail.

433

434 *Acknowledgements*

435 We thank the technicians of Scannexus for assisting with scanning and the administration of
436 the contrast agent.

437

438 *Sources of Funding*

439 This study was partly funded by the EU's Horizon 2020 project 'CRUCIAL', Grant
440 agreement number 848109, and 'Stichting De Weijerhorst Foundation'.

441

442 *Disclosures*

443 None

444

445 *Supplemental Material*

446 Figure S1-S2

447 Tables S1

448

449

450

451

452

453

454 **References**

- 455 1. Mills KT, Stefanescu A, He J. The global epidemiology of hypertension. *Nat. Rev.*
456 *Nephrol.* 2020;16:223–237.
- 457 2. Faraco G, Iadecola C. Hypertension: A Harbinger of Stroke and Dementia.
458 *Hypertension.* 2013;62:810–817.
- 459 3. Iadecola C, Yaffe K, Biller J, Bratzke LC, Faraci FM, Gorelick PB, Gulati M, Kamel H,
460 Knopman DS, Launer LJ, et al. Impact of Hypertension on Cognitive Function: A
461 Scientific Statement From the American Heart Association. *Hypertension.* 2016;68.
- 462 4. Meissner A. Hypertension and the Brain: A Risk Factor for More Than Heart Disease.
463 *Cerebrovasc. Dis.* 2016;42:255–262.
- 464 5. Sweeney MD, Zhao Z, Montagne A, Nelson AR, Zlokovic BV. Blood-Brain Barrier:
465 From Physiology to Disease and Back. *Physiol. Rev.* 2019;99:21–78.
- 466 6. Katsi V, Marketou M, Maragkoudakis S, Didagelos M, Charalambous G, Parthenakis F,
467 Tsioufis C, Tousoulis D. Blood–brain barrier dysfunction: the undervalued frontier of
468 hypertension. *J. Hum. Hypertens.* 2020;34:682–691.
- 469 7. Canjels LPW, Jansen JFA, Alers RJ, Ghossein-Doha C, Van Den Kerkhof M, Schiffer
470 VMMM, Mulder E, Gerretsen SC, Aldenkamp AP, Hurks PPM, et al. Blood–brain
471 barrier leakage years after pre-eclampsia: dynamic contrast-enhanced 7-TESLA MRI
472 study. *Ultrasound Obstet. Gynecol.* 2022;60:541–548.
- 473 8. Thrippleton MJ, Backes WH, Sourbron S, Ingrisch M, van Osch MJP, Dichgans M,
474 Fazekas F, Ropele S, Frayne R, van Oostenbrugge RJ, et al. Quantifying blood-brain

- 475 barrier leakage in small vessel disease: Review and consensus recommendations.
476 *Alzheimers Dement.* 2019;15:840–858.
- 477 9. Dobrynina LA, Shamtieva KV, Kremneva EI, Zabitova MR, Akhmetzyanov BM,
478 Gnedovskaya EV, Krotenkova MV. Daily blood pressure profile and blood–brain barrier
479 permeability in patients with cerebral small vessel disease. *Sci. Rep.* 2022;12:7723.
- 480 10. Raja R, Rosenberg GA, Caprihan A. MRI measurements of Blood-Brain Barrier
481 function in dementia: A review of recent studies. *Neuropharmacology.* 2018;134:259–
482 271.
- 483 11. Kerkhof M, Voorter PHM, Canjels LPW, Jong JJA, Oostenbrugge RJ, Kroon AA,
484 Jansen JFA, Backes WH. Time-efficient measurement of subtle blood–brain barrier
485 leakage using a T₁ mapping MRI protocol at 7 T. *Magn. Reson. Med.* 2021;85:2761–
486 2770.
- 487 12. Fischl B, Salat DH, Busa E, Albert M, Dieterich M, Haselgrove C, van der Kouwe A,
488 Killiany R, Kennedy D, Klaveness S, et al. Whole Brain Segmentation. *Neuron.*
489 2002;33:341–355.
- 490 13. Patlak CS, Blasberg RG, Fenstermacher JD. Graphical Evaluation of Blood-to-Brain
491 Transfer Constants from Multiple-Time Uptake Data. *J. Cereb. Blood Flow Metab.*
492 1983;3:1–7.
- 493 14. Staals J, Makin SDJ, Doubal FN, Dennis MS, Wardlaw JM. Stroke subtype, vascular
494 risk factors, and total MRI brain small-vessel disease burden. *Neurology.* 2014;83:1228–
495 1234.

- 496 15. Fazekas F, Chawluk J, Alavi A, Hurtig H, Zimmerman R. MR signal abnormalities at
497 1.5 T in Alzheimer's dementia and normal aging. *Am. J. Roentgenol.* 1987;149:351–356.
- 498 16. Klarenbeek P, van Oostenbrugge RJ, Rouhl RPW, Knottnerus ILH, Staals J. Ambulatory
499 Blood Pressure in Patients With Lacunar Stroke: Association With Total MRI Burden of
500 Cerebral Small Vessel Disease. *Stroke.* 2013;44:2995–2999.
- 501 17. Wardlaw JM, Benveniste H, Nedergaard M, Zlokovic BV, Mestre H, Lee H, Doubal FN,
502 Brown R, Ramirez J, MacIntosh BJ, et al. Perivascular spaces in the brain: anatomy,
503 physiology and pathology. *Nat. Rev. Neurol.* 2020;16:137–153.
- 504 18. Francis F, Ballerini L, Wardlaw JM. Perivascular spaces and their associations with risk
505 factors, clinical disorders and neuroimaging features: A systematic review and meta-
506 analysis. *Int. J. Stroke.* 2019;14:359–371.
- 507 19. Kerkhof M van den, Thiel MM van der, Oostenbrugge RJ van, Postma AA, Kroon AA,
508 Backes WH, Jansen JF. Impaired damping of cerebral blood flow velocity pulsatility is
509 associated with the number of perivascular spaces as measured with 7T MRI. *J. Cereb.*
510 *Blood Flow Metab.* 0:0271678X231153374.
- 511 20. Wardlaw JM, Smith C, Dichgans M. Mechanisms of sporadic cerebral small vessel
512 disease: insights from neuroimaging. *Lancet Neurol.* 2013;12:483–497.
- 513 21. Santisteban MM, Iadecola C, Carnevale D. Hypertension, Neurovascular Dysfunction,
514 and Cognitive Impairment. *Hypertension.* 2023;80:22–34.
- 515 22. Biancardi VC, Son SJ, Ahmadi S, Filosa JA, Stern JE. Circulating Angiotensin II Gains
516 Access to the Hypothalamus and Brain Stem During Hypertension via Breakdown of the
517 Blood–Brain Barrier. *Hypertension.* 2014;63:572–579.

- 518 23. Naessens DMP, De Vos J, VanBavel E, Bakker ENTP. Blood–brain and blood–
519 cerebrospinal fluid barrier permeability in spontaneously hypertensive rats. *Fluids*
520 *Barriers CNS*. 2018;15:26.
- 521 24. Rodrigues SF, Granger DN. Cerebral Microvascular Inflammation in DOCA Salt-
522 Induced Hypertension: Role of Angiotensin II and Mitochondrial Superoxide. *J. Cereb.*
523 *Blood Flow Metab*. 2012;32:368–375.
- 524 25. Santisteban MM, Ahn SJ, Lane D, Faraco G, Garcia-Bonilla L, Racchumi G, Poon C,
525 Schaeffer S, Segarra SG, Körbelin J, et al. Endothelium-Macrophage Crosstalk Mediates
526 Blood-Brain Barrier Dysfunction in Hypertension. *Hypertension*. 2020;76:795–807.
- 527 26. Chagnot A, Barnes SR, Montagne A. Magnetic Resonance Imaging of Blood–Brain
528 Barrier permeability in Dementia. *Neuroscience*. 2021;474:14–29.
- 529 27. Sweeney MD, Sagare AP, Zlokovic BV. Blood–brain barrier breakdown in Alzheimer
530 disease and other neurodegenerative disorders. *Nat. Rev. Neurol*. 2018;14:133–150.
- 531 28. Iadecola C, Gottesman RF. Neurovascular and Cognitive Dysfunction in Hypertension:
532 Epidemiology, Pathobiology, and Treatment. *Circ. Res*. 2019;124:1025–1044.
- 533 29. Wardlaw JM, Smith EE, Biessels GJ, Cordonnier C, Fazekas F, Frayne R, Lindley RI,
534 O’Brien JT, Barkhof F, Benavente OR, et al. Neuroimaging standards for research into
535 small vessel disease and its contribution to ageing and neurodegeneration. *Lancet*
536 *Neurol*. 2013;12:822–838.
- 537 30. Wong SM, Jansen JFA, Zhang CE, Staals J, Hofman PAM, van Oostenbrugge RJ,
538 Jeukens CRLPN, Backes WH. Measuring subtle leakage of the blood-brain barrier in
539 cerebrovascular disease with DCE-MRI: Test-retest reproducibility and its influencing

- 540 factors: Reproducibility of DCE-MRI in Subtle Leakage. *J. Magn. Reson. Imaging*.
541 2017;46:159–166.
- 542 31. Verheggen ICM, De Jong JJA, Van Boxtel MPJ, Gronenschild EHB, Palm WM,
543 Postma AA, Jansen JFA, Verhey FRJ, Backes WH. Increase in blood–brain barrier
544 leakage in healthy, older adults. *GeroScience*. 2020;42:1183–1193.
- 545 32. Weber CM, Clyne AM. Sex differences in the blood–brain barrier and
546 neurodegenerative diseases. *APL Bioeng*. 2021;5:011509.
- 547 33. Dion-Albert L, Bandeira Binder L, Daigle B, Hong-Minh A, Lebel M, Menard C. Sex
548 differences in the blood–brain barrier: Implications for mental health. *Front*.
549 *Neuroendocrinol*. 2022;65:100989.
- 550 34. Williams B, Mancia G, Spiering W, Agabiti Rosei E, Azizi M, Burnier M, Clement DL,
551 Coca A, De Simone G, Dominiczak A, et al. 2018 ESC/ESH Guidelines for the
552 management of arterial hypertension. *Eur. Heart J*. 2018;39:3021–3104.
- 553
554
555
556
557
558
559
560
561
562
563

564 ***Figure legends***

565 Figure 1: Scatterplots of the blood-brain barrier leakage rate in the four regions of interest
566 versus the mean arterial pressure. The red open and solid data points indicate hypertensive
567 patients without (HT-) and with intake of antihypertensive medication (HT+), respectively,
568 and the blue open and solid data points indicate normotensive participants without (NT-) and
569 with intake of antihypertensive medication (NT+), respectively. * indicates significant
570 associations. Note that the regression line aims to improve visualization, as it is not corrected
571 for age and sex.

572

73 Figure 2. Blood-brain barrier (BBB) leakage in the cortex for the three hypertensive patient
574 subgroups. NT+ indicates normotensive participants with intake of antihypertensive
575 medication, HT- and HT+ hypertensive patients without and with intake of antihypertensive
576 medication, respectively. A trend can be observed between the NT+ and the HT+ group. Note
577 that the combined HT- and HT+ group shows a significant difference with NT+ group.

578

579

580

581

582

583

584

585

586

587

588

589 Table 1: Characteristics of hypertensive patients and normotensive control participants.

590 Significant differences are depicted in bold.

591

<i>Participant characteristics</i>	<i>Hypertensive</i> (<i>n</i> = 22)	<i>Normotensive</i> (<i>n</i> = 19)	<i>p-value</i>
Age (years), mean (SD)	66.0 (7.5)	61.8 (8.9)	0.107
Male, <i>n</i> (%)	8 (36)	11 (58)	0.217
Systolic blood pressure (mmHg), mean (SD)	129.1 (17.2)	120.4 (8.2)	0.042
Diastolic blood pressure (mmHg), mean (SD)	73.6 (8.2)	72.0 (7.6)	0.523
Mean arterial pressure (mmHg), mean (SD)	95.7 (12.9)	90.7 (7.7)	0.137
Blood pressure medication groups			
- ACE inhibitors & ARBs, <i>n</i> (%)	13 (59)	0	N/A
- Beta-blockers, <i>n</i> (%)	5 (23)	0	N/A
- Calcium Antagonists, <i>n</i> (%)	3 (14)	0	N/A
- Diuretics, <i>n</i> (%)	4 (18)	0	N/A
Cardiovascular risk factors			
Hypercholesterolemia, <i>n</i> (%)	3 (14)	2 (11)	1.000
Triglyceriden, (mean (SD))	1.4 (0.7)	1.0 (0.3)	0.062
Hematocrit, (mean (SD))	0.43 (0.04)	0.45 (0.03)	0.339
Smoking, <i>n</i> (%)	0 (0)	0 (0)	N/A
History of smoking, <i>n</i> (%)	11 (50)	6 (32)	0.342
Body mass index in kg/m ² (mean (SD))	26.7 (3.0)	25.0 (3.6)	0.126
Alcohol (units per week (SD))	6.2 (7.9)	5.2 (6.3)	0.640

Imaging markers

Fazekas score, 0/1/2/3, n (%)	14 (64)/5 (23)/ 2 (9)/1 (5)	12 (63)/7 (37)/ 0 (0)/0 (0)	0.464
PVS scores			
BG, 0/1/2/3, n (%)	4 (18)/14 (64)/ 3 (14)/ 1 (5)	7 (37)/10 (53)/ 2 (11)/0 (0)	0.715
CSO, 0/1/2/3, n (%)	0 (0)/5 (23)/ 9 (41)/ 8 (36)	3 (16)/2 (11)/ 8 (42)/5 (26)	0.235
Lacunar infarcts, n (%)	2 (9)	0 (0)	0.490
Cerebral microbleeds, n (%)	0 (0)	0 (0)	N/A
Total cSVD score, 0/1/2/3/4, n (%)	4 (18)/14 (64)/ 4 (18)/0 (0)/0 (0)	6 (32)/ 12(63)/ 0 (0)/ 0(0)/0 (0)	0.147

592 *ACE indicates angiotensin-converting enzyme; ARB, angiotensin receptor blockers; PVS,
 593 perivascular spaces; BG, basal ganglia; CSO, centrum semiovale; cSVD, cerebral small vessel
 594 disease.

595

596 Table 2: Comparison of K_i and v_p between hypertensive patients and normative control participants, obtained by regression analysis adjusted for
597 age and sex. Significant differences are depicted in bold.

598 *BBB indicates blood-brain barrier; MAP, mean arterial pressure; K_i , blood-brain barrier leakage; v_p , blood plasma volume fraction; WM, white
599 matter; GM, grey matter.

<i>Brain region</i>	$K_i (*10^{-4})$				$v_p (*10^{-2})$			
	Hypertensive	Normotensive	Standardized β	p-value	Hypertensive	Normotensive	Standardized β	p-value
Total WM	4.23 \pm 1.98	4.61 \pm 1.64	0.026	0.847	3.12 \pm 0.93	2.98 \pm 0.80	0.216	0.095
Total GM	6.59 \pm 1.85	7.08 \pm 1.75	-0.016	0.900	4.27 \pm 0.93	4.04 \pm 0.87	0.257	0.049
Cortical GM	6.58 \pm 1.83	7.05 \pm 1.69	-0.010	0.940	4.23 \pm 0.93	4.01 \pm 0.84	0.263	0.042
Deep GM	3.61 \pm 2.42	3.95 \pm 2.00	0.043	0.683	3.30 \pm 1.05	2.95 \pm 1.03	0.276	0.031

600 Table 3: Multivariable linear regression analyses were performed to obtain the association
601 between BBB leakage rate and blood plasma volume fraction, and blood pressure measures,
602 adjusted for age and sex. Significant differences are depicted in bold.

	Systolic blood pressure		Diastolic blood pressure		Mean arterial pressure	
Brain region	Standardized β	p-value	Standardized β	p-value	Standardized β	p-value
<i>K_i</i>						
Total WM	0.049	0.705	0.168	0.199	0.102	0.426
Total GM	0.227	0.052	0.253	0.035	0.271	0.019
Cortical GM	0.246	0.043	0.271	0.031	0.291	0.015
Deep GM	0.098	0.326	0.144	0.159	0.130	0.188
<i>v_p</i>						
Total WM	0.076	0.546	-0.094	0.468	-0.001	0.995
Total GM	-0.061	0.632	-0.245	0.058	-0.143	0.260
Cortical GM	-0.061	0.632	-0.250	0.051	-0.148	0.239
Deep GM	-0.033	0.796	-0.152	0.238	-0.085	0.498

603
604 *MAP indicates mean arterial pressure; *K_i*, blood-brain barrier leakage; *v_p*, blood plasma
605 volume fraction; WM, white matter; GM, grey matter

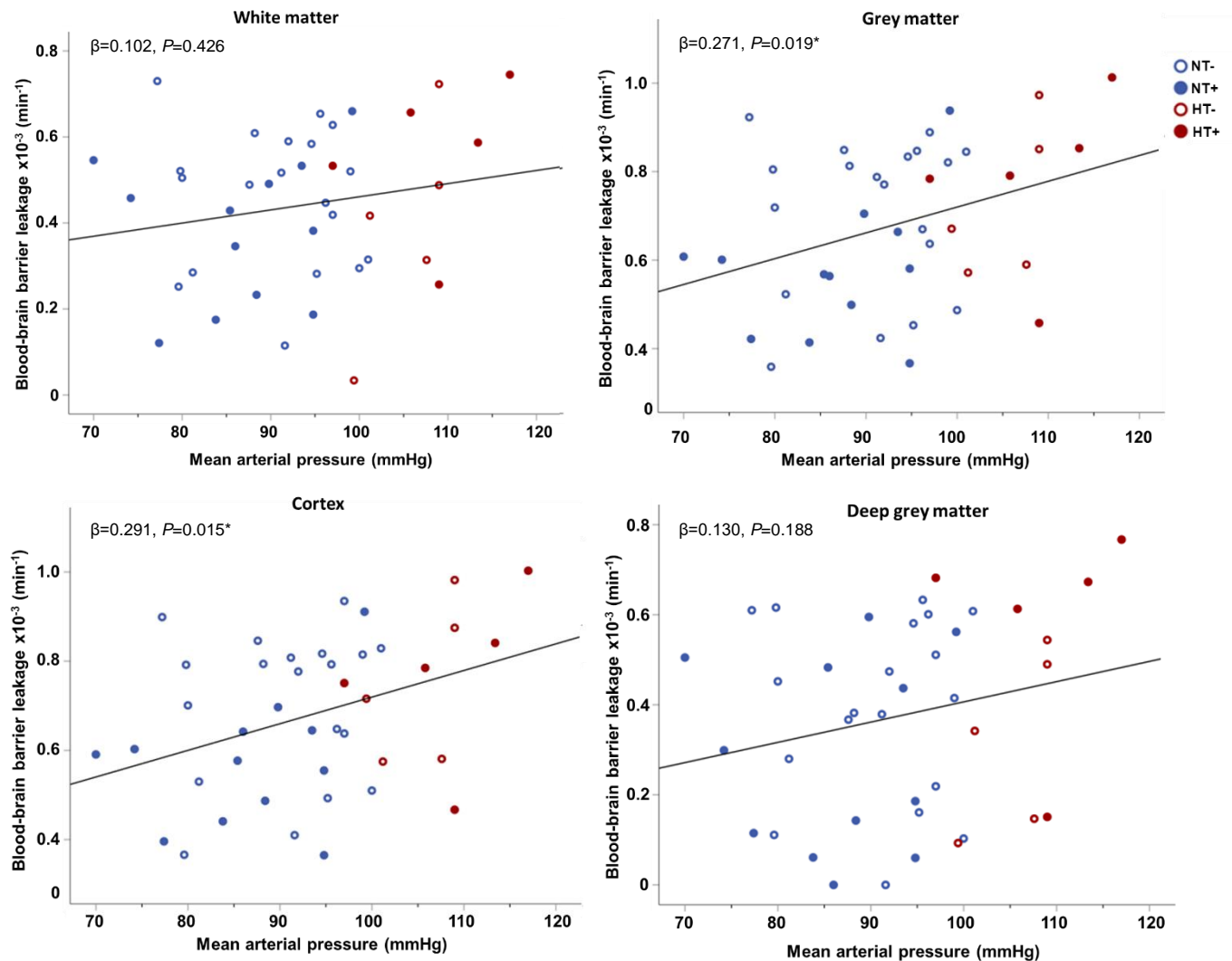


Figure 1: Scatterplots of the blood-brain barrier leakage rate in the four regions of interest versus the mean arterial pressure. The red open and solid data points indicate hypertensive patients without (HT-) and with intake of antihypertensive medication (HT+), respectively, and the blue open and solid data points indicate normotensive participants without (NT-) and with intake of antihypertensive medication (NT+), respectively. * indicates significant associations. Note that the regression line aims to improve visualization, as it is not corrected for age and sex.

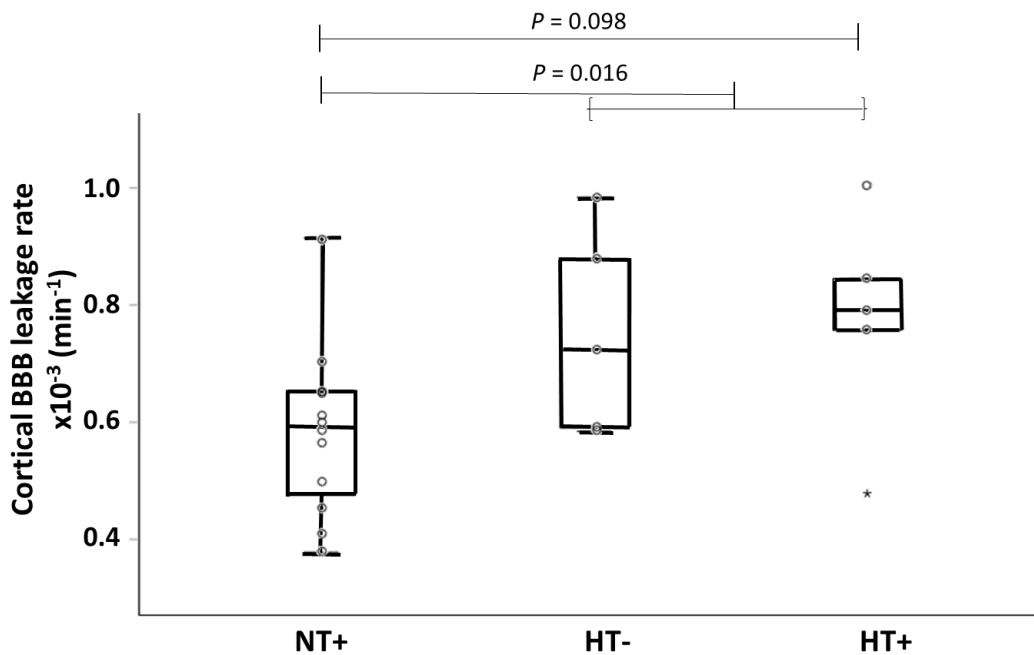


Figure 2. Blood-brain barrier (BBB) leakage in the cortex for the three hypertensive patient subgroups. NT+ indicates normotensive participants with intake of antihypertensive medication, HT- and HT+ hypertensive patients without and with intake of antihypertensive medication, respectively. A trend can be observed between the NT+ and the HT+ group. Note that the combined HT- and HT+ group shows a significant difference with NT+ group.