

## Resistance to cortical amyloid-beta associates with cognitive health in centenarians

Susan K. Rohde, MSc<sup>a,b,c</sup>, Patricia Fierro-Hernández, BSc<sup>a,c</sup>, Annemieke J.M. Rozemuller, MD<sup>c,d</sup>  
Netherlands Brain Bank<sup>d</sup>, Linda M.C. Lorenz, MSc<sup>a,b,e</sup>, Meng Zhang, PhD<sup>a,f</sup>, Marieke Graat, MSc<sup>a,b</sup>,  
Myke van der Hoorn, MSc<sup>a,b</sup>, Dominique Daatselaar, MSc<sup>a,b</sup>, Marc Hulsman, PhD<sup>a,b,f</sup>, Philip Scheltens,  
MD<sup>b</sup>, Sietske A.M. Sikkes, PhD<sup>b,g</sup>, Jeroen J.M. Hoozemans, PhD<sup>^</sup> & Henne Holstege, PhD<sup>a,b,f,^\*</sup>

<sup>a</sup> Department of Human Genetics, Genomics of Neurodegenerative Diseases and Aging, Vrije Universiteit Amsterdam, De Boelelaan 1118, Amsterdam, The Netherlands

<sup>b</sup> Department of Neurology and Alzheimer Center Amsterdam, Amsterdam UMC location VUmc, De Boelelaan 1117, Amsterdam, The Netherlands.

<sup>c</sup> Department of Pathology, Amsterdam UMC location VUmc, De Boelelaan 1117, Amsterdam, The Netherlands.

<sup>d</sup> Netherlands Institute for Neuroscience, Meibergdreef 47, Amsterdam, The Netherlands

<sup>e</sup> Amsterdam Neuroscience, Neurodegeneration, Amsterdam, The Netherlands

<sup>f</sup> Delft Bioinformatics Lab, Delft Technical University, Van Mourik Broekmanweg 6, Delft, The Netherlands

<sup>g</sup> Department of Clinical, Neuro and Developmental Psychology, Faculty of Behavioural and Movement Sciences, Vrije Universiteit Amsterdam, De Boelelaan 1118, Amsterdam, the Netherlands

<sup>^</sup> Jeroen J.M. Hoozemans and Henne Holstege are shared last authors.

### \* Corresponding author

Dr. Henne Holstege

Genomics of Neurodegenerative Diseases and Aging, Human Genetics, Vrije Universiteit van Amsterdam, Amsterdam UMC location VUmc, De Boelelaan 1118, 1081HZ Amsterdam, The Netherlands

E: [h.holstege@amsterdamumc.nl](mailto:h.holstege@amsterdamumc.nl),

T: +31(0)204448529

**BACKGROUND:** Amyloid-beta(A $\beta$ )-plaques accumulate in non-demented individuals, particularly at advanced ages. The unclear association between A $\beta$ -pathology and cognition in elderly raises the question whether A $\beta$ -pathology should be considered a benign consequence of aging.

**METHODS:** Post-mortem brains of 95 centenarians and 27 Alzheimer's disease(AD) patients were evaluated for A $\beta$ -plaque distribution according to the Thal phase and quantitative A $\beta$ -load in the neocortex. For centenarians, A $\beta$ -pathology was correlated to *APOE*-genotype and performance on 12 cognitive tests administered shortly before death.

**FINDINGS:** While 35% of centenarians exhibited A $\beta$ -loads similar to AD patients, cortical A $\beta$ -load was limited in 65% of centenarians, some of which had the highest Thal phase. Cortical A $\beta$ -load, as opposed to Thal phase, associated with *APOE*-genotype and cognitive performance in centenarians.

**DISCUSSION:** Despite increasing A $\beta$ -accumulation in various brain regions with age, actual A $\beta$ -loads remain low in cognitively healthy centenarians. Therefore, A $\beta$ -pathology in the oldest-old may not be considered a benign consequence of aging.

# Manuscript

## 1. Back ground

Alzheimer's disease (AD) is the most common cause of dementia, estimated to account for 60-80% of the 55 million dementia cases worldwide[1]. Clinically, AD is characterized by cognitive decline, including memory and learning impairment, and changes in behavior and personality. Neuropathological hallmarks of AD consist of: 1) amyloid-beta ( $A\beta$ ) plaques; 2) hyperphosphorylated tau proteins accumulated as neurofibrillary tangles (NFTs) and; 3) neuritic plaques composed of fibrillary  $A\beta$  surrounded by dystrophic neurites[2]. The amyloid-cascade hypothesis postulates  $A\beta$  pathology as an initiator of downstream tau pathology, synaptic- and neuronal-loss, and eventually dementia[3].  $A\beta$  plaques present in different forms, of which diffuse-, compact-, and cored-plaques are most common in sporadic AD[4]. Besides plaques,  $A\beta$  pathology can also accumulate in the vessel walls as cerebral amyloid angiopathy (CAA), and as subpial amyloid deposition[4, 5]. The widely accepted standard for assessing the severity of  $A\beta$  pathology in the post-mortem brain is the Thal  $A\beta$  phase system, which evaluates the extent of spatiotemporal  $A\beta$  distribution according to 5 phases, based on progressive deposition of  $A\beta$  in the neocortex (phase 1), allocortex (phase 2), diencephalon and striatum (phase 3), brainstem (phase 4), and the cerebellum (phase 5)[6]. Although there is a proposed order of involvement of different plaque-types at these different Thal phases, all  $A\beta$  plaque-types, but not CAA, are considered when assigning the Thal phase[4, 6].

In principle, AD patients are characterized by a Thal phase  $\geq 3$ , while non-demented individuals aged  $<70$  years generally exhibit little to no  $A\beta$  pathology (Thal phase  $\leq 2$ )[6, 7]. However, with increasing age, Thal phase in non-demented cases gradually

approaches the levels observed in AD patients[7]. As a matter of fact, we observed Thal phase 5 in the brains from centenarians, who were still cognitive healthy shortly before death[7, 8]. Accordingly, Thal phase does not associate with cognitive performance in cohorts with different ages, including centenarians[8, 9]. These observations previously led us to hypothesize that the deposition of A $\beta$  plaques in self-reported cognitively healthy centenarians may be, at least in part, a natural consequence of aging and not directly causative of cognitive decline[8].

However, while the Thal phase reflects the hierarchical distribution of A $\beta$  across brain regions, the actual load of A $\beta$  pathology is not considered. As we observe great differences in A $\beta$ -load in different brains with the same Thal phase, we questioned whether A $\beta$ -load, rather than Thal phase, associates with cognitive performance close to death. Furthermore, we questioned whether A $\beta$ -load in centenarians approaches the levels observed in AD patients with the same Thal phase. Moreover, we explored whether there is an effect of *APOE* genotype, the major genetic risk factor for AD, on A $\beta$ -load in centenarians, as was previously described for younger populations[10-12].

To answer these questions, we analyzed postmortem brains from 95 centenarians and 27 AD patients. We evaluated A $\beta$  pathology using; 1) the conventional Thal A $\beta$  phase for the spatiotemporal distribution, and; 2) a quantitative imaging analysis method to determine A $\beta$ -load in four neocortical regions, which are the first regions affected by A $\beta$  pathology (i.e. in Thal phase 1). We compared A $\beta$  pathology in centenarians to A $\beta$  pathology in AD patients. Moreover, we explored the relation between the two different measurements for A $\beta$  pathology. We furthermore investigated whether *APOE*-genotype associates with A $\beta$  pathology in centenarians.

Finally, we evaluated associations of A $\beta$  pathology with cognitive functioning in centenarians, as measured close to death.

## **2. Methods**

### **2.1 The 100-plus Study**

The 100-plus Study enrolls self-reported cognitively healthy Dutch centenarians[13]. At baseline house-visit we: (1) collect lifetime history including educational history; (2) assess cognitive performance using a comprehensive test battery; (3) collect blood samples, allowing DNA isolation for genetic analysis including *APOE*-genotyping; and (4) discuss optional post-mortem brain donation. Cognitive performance is annually tested during follow-up visits. As a result of this, we have information on cognitive performance close to death. The 100-plus Study was approved by the local medical ethics committee of the VUmc (registration 2016.440) and all participants gave informed consent.

### **2.2 Cognitive assessment of centenarians**

Cognitive assessment consisted of 16 tests addressing global cognitive performance and five cognitive domains (i.e. memory, verbal fluency, executive functions, visuospatial functioning and attention/processing speed). Cognitive test details are available in the Supplementary methods, and a detailed description of the cognitive testing procedures was published previously[13]. To minimize time between neuropsychological assessment and neuropathological evaluation, we included cognitive test scores collected at last study-visit. Some centenarians had missing test scores due to fatigue, sensory or motor difficulties, or because some tests were not yet included in the battery at the time of testing. Hence, we imputed missing test scores as described in the Supplementary methods. For the association between A $\beta$

pathology and cognition, we included the 12 tests for which performance was available for >50% of centenarians prior to imputation (Table 1; Supplementary Table S1). Moreover, we calculated a composite global cognition score by combining normalized z-scores on 11 individual tests (excluding the Mini-Mental State Examination (MMSE), since this is a separate measure for global cognition). We only included the 88 centenarians for whom >50% of tests was available prior to imputation.

### **2.3 Post-mortem brain tissue**

Post-mortem brain tissue from 95 centenarian-participants of the 100-plus Study and 27 AD patients were collected from 2012 until 2022. Brain autopsies were performed by the Netherlands Brain Bank (NBB; Amsterdam, The Netherlands (<https://www.brainbank.nl>)), as approved by the local medical ethics committee of the VUmc (registration 2009.148). Donors granted informed consent for autopsy, tissue storage, and the utilization of anonymized clinical and neuropathological data for research. Brain donation was performed within 12 hours post-mortem, followed by formalin (10%) fixation for around 4 weeks. The dissection of brain tissue and neuropathological diagnosis followed the international guidelines established by the Brain Net Europe II consortium and NIA-AA, and were performed by one and the same neuropathologist[2, 14].

### **2.4 AD patients**

As a reference for A $\beta$  pathology in centenarians, we included late-onset AD patients from the NBB collection. We selected AD cases based on the criteria: 1) diagnosis of dementia during life; 2) intermediate or high score for AD pathology according to the

NIA-AA criteria; 3) age at death  $\geq 75$ ; 4) *APOE* genotype available; and 5) A $\beta$  stained cortical regions of interest available for A $\beta$ -load quantification (see sections below).

## **2.5 Immunohistochemistry to visualize A $\beta$**

For all autopsied brains, the NBB provided 8  $\mu$ m thick formalin-fixed paraffin-embedded (FFPE) brain sections stained for A $\beta$  (6F/D3, DAKO, Glostrup, Denmark, #M0872, 1:125) raised against amino acids 8-17 of the A $\beta$  protein. The immunohistochemistry protocol is described in the Supplementary methods and was maintained as constant as possible throughout a period of 10 years.

## **2.6 Thal phases for spatiotemporal A $\beta$ deposition**

The spatiotemporal distribution of A $\beta$  pathology was assessed using the Thal phase system, which ranges from 1 to 5[6]. Presence of A $\beta$  plaques was evaluated in specific brain regions: middle frontal gyrus, middle temporal cortex, temporal pole cortex, inferior parietal lobule cortex, occipital pole cortex (if any number of A $\beta$  plaques of any kind were observed in any of these regions, but none of the following, a Thal phase of 1 was assigned); CA1 region of the hippocampus and entorhinal cortex (Thal phase 2); molecular layer of the hippocampus, amygdala, nucleus caudatus, putamen and nucleus accumbens (Thal phase 3); CA4 region of the hippocampus, substantia nigra and inferior olivary nucleus (Thal phase 4); cerebellum and locus coeruleus (Thal phase 5). If no A $\beta$  plaques of any kind were observed, Thal phase 0 was assigned. Neuropathological evaluation was done by one and the same neuropathologist.

## **2.7 Quantitative cortical A $\beta$ -load**

For each brain donor, we selected A $\beta$ -stained sections of the middle frontal gyrus, inferior parietal lobe, temporal pole, and occipital pole (primary visual cortex), which

are all involved in Thal phase 1 (Figure 1A). Slides were scanned at 20x magnification with an Olympus VS200 slide scanner and VS200 ASW software (version 3.3)(Figure 1B). Images (average size of 20 by 26 mm ( $\pm$  SD 2.3 and 2.9)) were analyzed in the open-source QuPath software (version 0.3.2)[15]. The grey matter was manually annotated as regions of interest (ROI)(Figure 1C). An artificial neural network was trained with a set of 10 images representing the full spectrum of A $\beta$  immunoreactivity in terms of intensity and frequency. This pixel classifier was then applied to all images, where after any false negative and positive detections were used to refine the pixel classifier. Ultimately, a final pixel classifier accurately detected various A $\beta$  immunoreactivity subtypes with varying intensities (Figure 1D-H). For each image, we calculated the A $\beta$ -load as the percentage of the grey matter positive for A $\beta$  immunoreactivity. Moreover, we binary classified images with an A $\beta$ -load of 0% as negative.

## **2.8 APOE-genotyping**

Because of the low frequency of certain genotypes amongst centenarians, *APOE*-genotypes were grouped as: protective ( $\epsilon$ 2/2 and  $\epsilon$ 2/3), neutral ( $\epsilon$ 3/3), or risk-increasing ( $\epsilon$ 2/4 and  $\epsilon$ 3/4 ( $\epsilon$ 4/4 did not occur)[10].

## **2.9 Statistical analysis**

Differences in median Thal phase and A $\beta$ -load among cortical regions, cohorts or carriers of different *APOE*-genotypes, were tested with Kruskal-Wallis tests. The correlation between Thal phase and A $\beta$ -load in various cortical regions was determined by calculating Spearman correlation coefficients. To examine different distributions of A $\beta$ -negativity in specific brain regions or among different *APOE*-genotypes, we applied Fisher's exact test and Chi-squared tests. To investigate the



relation between A $\beta$  pathology (predictors) and cognitive test scores (outcome), we applied multiple linear regression models. To ensure comparability of regression coefficients across different comparisons, all variables were normalized using z-scores. Models were corrected for the covariates sex, age at death, and years of education. All p-values were corrected for multiple testing by calculating the false discovery rate (FDR) using the Benjamini-Hochberg method. P-values <0.05 were considered significant. Analyses were performed in Rstudio (version 4.2.1.) and GraphPad Prism (version 9.3.1).

### 3. Results

#### 3.1 Majority of centenarians had limited cortical A $\beta$ -load

Thal phases in the centenarians were significantly lower (median 3, range 0-5) compared with AD patients (median 5, range 3-5) ( $p < 1 \times 10^{-4}$ ) (Figure 2A; demographics in Table 1). Across all regions, A $\beta$ -load in centenarians was significantly lower compared to AD patients ( $p < 1 \times 10^{-4}$ ) (Figure 2B; see Figure S1 for corresponding images of A $\beta$  immunopositivity in the frontal cortex). While it was not possible to quantify fractions of different types of A $\beta$  depositions in the total A $\beta$ -load, we observed that A $\beta$ -load mainly represented diffuse-, cored-, and compact-A $\beta$  plaques, and to a lesser extent CAA and subpial amyloid deposition (Figure 1E-H). We observed a spatiotemporal pattern of A $\beta$ -load in the cortex in both centenarians and AD patients: A $\beta$ -load was the highest in the frontal cortex, followed by the parietal cortex, then the temporal and occipital cortices (Figure 2B). In centenarians, this was also reflected in higher frequency of complete absence of A $\beta$  pathology (i.e., 0% positive area) in the temporal and occipital cortices compared to parietal and frontal cortices ( $X^2$  (df=3)=7.8,  $p=0.04$ ) (Table 2). Cortical A $\beta$ -load correlated with

Thal phase in centenarians, but not in AD patients as these were predominantly Thal phase 5 (Figure 2C). In all 33 centenarians with Thal phase 1-2, A $\beta$ -load was <4% across all cortical regions (Figure 3A). In centenarians with Thal phases  $\geq 3$ , we observed a wide variation in A $\beta$ -load. In contrast, in AD patients we rarely observed cortical regions with A $\beta$ -load <4%, and we never observed A $\beta$ -load <4% across all cortical regions. Moreover, in the AD cohort, ~4% was the lower limit of A $\beta$ -load in the frontal cortex, the most affected region. Hence, we had multiple indications to divide the centenarian cohort into 62 (65%) centenarians with limited A $\beta$ -loads (<4% A $\beta$ -load across all regions) and 33 (35%) centenarians with AD-associated A $\beta$ -loads (>4% A $\beta$ -load in the frontal cortex) (Figure 4A). Intriguingly, 15 of the 30 centenarians with Thal phase 3 (50%), 3 of the 14 centenarians with Thal phase 4 (21%), and 2 of the 9 centenarians with Thal phase 5 (22%) were resistant to AD-associated levels of A $\beta$ -load (Figure 4A-B). Overall, the median A $\beta$ -load in frontal, parietal and occipital cortex was lower in centenarians compared to AD patients, even though they had Thal phase 4 and 5 (Figure 3B).

### **3.2 APOE-genotype associates with cortical A $\beta$ -load in centenarians**

Centenarians with a protective *APOE*-genotype ( $\epsilon 2/2$  and  $\epsilon 2/3$ ) had a lower A $\beta$ -load across all cortical regions, compared to centenarians with a neutral ( $\epsilon 3/3$ )- or risk-increasing ( $\epsilon 2/4$  and  $\epsilon 3/4$ )- *APOE*-genotype (Figure 5). Furthermore, *APOE*- $\epsilon 2/2$  and - $\epsilon 2/3$  carriers were more likely to be completely free of A $\beta$  pathology in temporal and occipital cortices compared to other genotypes (Fisher's exact test;  $p < 0.001$ ; Table 2). Five of the seven genotyped centenarians who were negative for A $\beta$  (i.e. Thal 0) were  $\epsilon 2$ -carriers. On the other hand, *APOE*- $\epsilon 4$  carriers tended to have a higher A $\beta$ -load compared to  $\epsilon 3/3$ -carriers, although this difference did not reach statistical significance, likely due to the limited number of  $\epsilon 4$ -centenarians ( $p_{\text{frontal}} = 0.112$ ;

$p_{\text{parietal}}=0.059$ ;  $p_{\text{temporal}}=0.377$ ;  $p_{\text{occipital}}=0.127$ ). Nevertheless, half of the  $\epsilon 4$ -carriers had limited A $\beta$ -load, indicating they were resilient to the assumed effect of *APOE- $\epsilon 4$*  on A $\beta$ -load, as observed on group level (Figure 4C).

### **3.3 Cortical A $\beta$ -load affects global cognition and executive functioning in centenarians**

For 88 centenarians, cognitive performance was assessed a median of 9.5 months prior to brain donation (interquartile range (IQR) 4-13) (Table 1). Regression models were applied to investigate the relation between A $\beta$  pathology and cognitive test scores (Figure 6A, Table S2). Thal phase did not associate with cognitive performance. In contrast, higher A $\beta$ -load associated with poorer global cognition, as measured with the MMSE and a composite score combining performance on all individual tests. Notably, higher A $\beta$ -load across all regions associated with lower performance on the neuropsychological tests that assess executive functioning: the Digit Span backwards test, the Key search test, and the Clock Drawing test. A $\beta$ -load did not associate with performance in other cognitive domains, indicating that the association with global cognition may be partly attributed to the executive functioning domain. In addition to the linear association, median performance on the aforementioned tests, except for the MMSE ( $p=0.075$ ), was lower in the centenarian-group with AD-associated A $\beta$ -load compared to the group with limited A $\beta$ -load ( $p=0.075$ ) (Figure 6B).

Despite the strong associations between A $\beta$ -loads and cognitive performance, individual signals were variable: some centenarians had AD-associated levels of A $\beta$ -loads and scored high on neuropsychological tests, while others had a limited A $\beta$ -load, but scored low on the cognitive tests (Figure 6B). This indicates that next to A $\beta$ -load, additional factors associated with resilience may have affected individual

cognitive performance. Although we observed a gene-dosage effect of *APOE*- $\epsilon_2$  $\epsilon_3$  $\epsilon_4$  on cortical A $\beta$ -load (Figure 5), there was no association between *APOE*-genotype and cognitive performance in this group (Supplementary Figure S2). In fact, three  $\epsilon_4$ -centenarians with AD-associated A $\beta$ -load maintained remarkably high levels of cognitive performance (Figure 6B).

## 4. Discussion

An analysis of A $\beta$  pathology in 95 centenarians and 27 AD patients revealed that majority of centenarians resisted build-up of high levels of cortical A $\beta$ -load typically observed in AD patients, even when A $\beta$  spread was consistent with the highest Thal phases. Higher levels of cortical A $\beta$ -load, but not higher Thal phase, associated with lower global cognitive performance and executive functioning. Furthermore, *APOE*-genotype associated with A $\beta$ -load but not with Thal phase, further underscoring a role for A $\beta$ -load, rather than A $\beta$  distribution, in the risk of cognitive decline and AD. Overall, our findings suggest that keeping A $\beta$ -load within limits is a hallmark of maintained cognitive health until extreme ages.

The finding that A $\beta$ -load associates with cognitive performance in centenarians aligns with two previous reports that have linked post-mortem neocortical A $\beta$ -load with lower cognition in non-demented 80-year-olds[16, 17]. Our study indicates that specifically the executive functioning domain, as assessed with the Digit Span Backwards, the Key Search, and the Clock Drawing tests, is affected by higher levels of A $\beta$ -loads. Previous studies did not report a specific correlation with executive functioning, although one study reported a correlation between A $\beta$ -load and the Digit Span Backwards test[17]. In line with our findings, a recent report indicated that increased A $\beta$ -accumulation in the brain, as determined by cerebrospinal fluid or

positron emission tomography (PET) measurements, specifically associated with lower executive functioning in non-demented individuals aged 50-80[18].

Note that in a previous analysis of this same set of centenarians we found that overall neuropathological changes, including NFT, TAR DNA-binding protein 43 (TDP-43), Lewy Bodies, and hippocampal sclerosis, associated strongest with the Clock Drawing test[8]. However, here we observe a stronger correlation between A $\beta$ -load with the Key Search, and the Digit Span Backwards tests and to a lesser extent with the Clock Drawing tests. This may reflect sensitivity of the CDT for other neuropathological substrates, next to A $\beta$ -load, while the Key Search and Digit Span may be more sensitive to high A $\beta$ -loads.

This study is the first to directly compare conventional Thal phase to A $\beta$ -load quantifications in relation to cognition. We show that quantitative A $\beta$ -load correlates with cognition, while Thal phase does not. Our results emphasize the need for a wide and standardized application of quantitative pathology in addition to traditional staging systems, as it gives a more objective and representative measurement of pathology severity[19].

In both the centenarian and AD cohorts, we observed a spatiotemporal pattern of cortical A $\beta$  load, wherein the middle frontal gyrus is affected earliest and most severely and the temporal and occipital poles are affected later and to a lesser degree. Our observations differ from the initial Thal phase study, in which A $\beta$  plaques in 6 brains with Thal phase 1 were most frequently seen in temporal and occipital cortex (5/6), followed by the frontal cortex (4/6), and least in the parietal cortex (2/6)[6]. On the other hand, our observations are in line with a large study on ~3500 post-mortem brains, in which the middle frontal gyrus and inferior parietal lobe had higher A $\beta$  plaque count compared to the superior temporal gyrus and the occipital

cortex[20]. Notably, we observed a similar pattern in centenarians as in AD patients, indicating comparable etiopathogenesis of A $\beta$  pathology in healthy aging and AD.

Centenarian-carriers of the protective *APOE*- $\epsilon$ 2 genotype had lower levels of A $\beta$ -load, while the few carriers of the *APOE*- $\epsilon$ 4 risk allele tended to have a higher A $\beta$ -load. Moreover, the *APOE*- $\epsilon$ 2 genotype was enriched in the small subset of centenarians who were fully resistant to the accumulation of A $\beta$  (i.e. Thal phase 0). Altogether, while the risk increasing effect of *APOE*- $\epsilon$ 4 on AD has been reported to wane with increasing age, our results suggest that the gene-dosage effect of  $\epsilon$ 2< $\epsilon$ 3< $\epsilon$ 4 on cortical A $\beta$ -load, as observed in younger individuals, extends until extreme ages[11, 12, 21].

Nevertheless, despite the overall trend, half of the  $\epsilon$ 4-centenarians resisted the accumulation of AD-associated A $\beta$ -load levels. Further investigation of these  $\epsilon$ 4-carriers may uncover mechanisms underlying resistance to the well-known effect of the  $\epsilon$ 4-allele on increased A $\beta$ -load[12]. The other  $\epsilon$ 4-centenarians had A $\beta$ -load levels similar to AD patients, but maintained remarkably high cognitive performance. We anecdote one  $\epsilon$ 4-carrier, who presented with the highest A $\beta$ -load in the centenarian cohort (Figure 4), but who, at last study visit 9.5 months prior to brain donation, scored 26/30 on the MMSE, 5/5 on the Clock Drawing test, and above cohort average on global cognition (z-score 0.23), while scores on the Key search test (4/16) and Digit span Backwards (3/8) were relatively low. This illustrates that it is possible to maintain relatively high cognitive abilities despite high levels of A $\beta$ -load. Investigation of these centenarians may guide us towards mechanisms that protect against factors with a risk-increasing effect on AD.

One of the inclusion criteria for the longitudinal 100-plus Study is that centenarians self-report to be cognitively healthy, which is confirmed by a proxy. At 100 years, the

dementia incidence is ~40%[13], such that at last annual study visit, commonly 3-5 years after study inclusion, centenarians present with a range of cognitive abilities. Therefore, the 100-plus Study cohort provides a unique window of opportunity to compare the relationship between A $\beta$  pathology in the post-mortem brain with cognitive performance assessed shortly before death. Given the inclusion criteria of the study, the cohort includes an overrepresentation of individuals who are resistant and/or resilient to risk factors of dementia, as compared to the average population. Furthermore, given their age, centenarians have accumulated diverse disease-associated neuropathological substrates which may have influenced cognitive performance, which we did not take into account. Moreover, we analyzed total A $\beta$ -load without discriminating between different pathological structures such as classic cored plaques, diffuse plaques, CAA, or subpial depositions. While all plaque types and subpial depositions are considered for A $\beta$ -load, CAA is excluded for Thal phasing and evaluated with a separate CAA-Thal phase[5]. While the contribution of CAA to the total A $\beta$  load is expected to be limited, this should nevertheless be taken into account when comparing the A $\beta$ -load with Thal phases. Lastly, future studies are needed to explore whether higher A $\beta$ -load in brain regions other than the cortex may associate with decline in other cognitive domains than executive function. For example, it would be possible that hippocampal A $\beta$ -load may associate with decline of memory function.

In conclusion, we show that resistance to cortical A $\beta$ -load, rather than A $\beta$ -distribution, is an important contributor to maintaining cognitive health up until extreme ages. We have shown that cortical A $\beta$ -load is associated with cognitive performance, specifically in the executive domain, and is influenced by *APOE*-genotype. Nevertheless, some centenarians were able to maintain high levels of cognitive

performance despite accumulating high levels of A $\beta$ . Finally, our results indicate that A $\beta$ -pathology is not a benign consequence of aging, which highlights the prospective impact of emerging therapies aimed at reducing A $\beta$  levels.



## References

1. *2023 Alzheimer's disease facts and figures*. *Alzheimers Dement*, 2023. **19**(4): p. 1598-1695.
2. Montine, T.J., et al., *National Institute on Aging-Alzheimer's Association guidelines for the neuropathologic assessment of Alzheimer's disease: a practical approach*. *Acta Neuropathol*, 2012. **123**(1): p. 1-11.
3. Karran, E. and B. De Strooper, *The amyloid hypothesis in Alzheimer disease: new insights from new therapeutics*. *Nat Rev Drug Discov*, 2022. **21**(4): p. 306-318.
4. Thal, D.R., E. Capetillo-Zarate, K. Del Tredici, and H. Braak, *The development of amyloid beta protein deposits in the aged brain*. *Sci Aging Knowledge Environ*, 2006. **2006**(6): p. re1.
5. Thal, D.R., E. Ghebremedhin, M. Orantes, and O.D. Wiestler, *Vascular pathology in Alzheimer disease: correlation of cerebral amyloid angiopathy and arteriosclerosis/lipohyalinosis with cognitive decline*. *J Neuropathol Exp Neurol*, 2003. **62**(12): p. 1287-301.
6. Thal, D.R., U. Rub, M. Orantes, and H. Braak, *Phases of A beta-deposition in the human brain and its relevance for the development of AD*. *Neurology*, 2002. **58**(12): p. 1791-800.
7. Zhang, M., et al., *Resilience and resistance to the accumulation of amyloid plaques and neurofibrillary tangles in centenarians: An age-continuous perspective*. *Alzheimers Dement*, 2022.
8. Zhang, M., et al., *The correlation between neuropathology levels and cognitive performance in centenarians*. *Alzheimers Dement*, 2023.
9. Serrano-Pozo, A., et al., *Thal Amyloid Stages Do Not Significantly Impact the Correlation Between Neuropathological Change and Cognition in the Alzheimer Disease Continuum*. *J Neuropathol Exp Neurol*, 2016. **75**(6): p. 516-26.
10. Farrer, L.A., et al., *Effects of age, sex, and ethnicity on the association between apolipoprotein E genotype and Alzheimer disease. A meta-analysis. APOE and Alzheimer Disease Meta Analysis Consortium*. *JAMA*, 1997. **278**(16): p. 1349-56.
11. Berlau, D.J., et al., *Neocortical beta-amyloid area is associated with dementia and APOE in the oldest-old*. *Alzheimers Dement*, 2013. **9**(6): p. 699-705.
12. Jansen, W.J., et al., *Prevalence of cerebral amyloid pathology in persons without dementia: a meta-analysis*. *JAMA*, 2015. **313**(19): p. 1924-38.
13. Holstege, H., et al., *The 100-plus Study of cognitively healthy centenarians: rationale, design and cohort description*. *Eur J Epidemiol*, 2018. **33**(12): p. 1229-1249.
14. Klioueva, N.M., et al., *BrainNet Europe's Code of Conduct for brain banking*. *J Neural Transm (Vienna)*, 2015. **122**(7): p. 937-40.
15. Bankhead, P., et al., *QuPath: Open source software for digital pathology image analysis*. *Sci Rep*, 2017. **7**(1): p. 16878.
16. Price, J.L., et al., *Neuropathology of nondemented aging: presumptive evidence for preclinical Alzheimer disease*. *Neurobiol Aging*, 2009. **30**(7): p. 1026-36.
17. Bennett, D.A., et al., *Relation of neuropathology to cognition in persons without cognitive impairment*. *Ann Neurol*, 2012. **72**(4): p. 599-609.
18. Tideman, P., et al., *Association of beta-Amyloid Accumulation With Executive Function in Adults With Unimpaired Cognition*. *Neurology*, 2022. **98**(15): p. e1525-e1533.
19. Kapasi, A., et al., *High-throughput digital quantification of Alzheimer disease pathology and associated infrastructure in large autopsy studies*. *J Neuropathol Exp Neurol*, 2023. **82**(12): p. 976-986.
20. Murray, M.E., et al., *Clinicopathologic and 11C-Pittsburgh compound B implications of Thal amyloid phase across the Alzheimer's disease spectrum*. *Brain*, 2015. **138**(Pt 5): p. 1370-81.
21. Bonham, L.W., et al., *Age-dependent effects of APOE epsilon4 in preclinical Alzheimer's disease*. *Ann Clin Transl Neurol*, 2016. **3**(9): p. 668-77.
22. Folstein, M.F., S.E. Folstein, and P.R. McHugh, *"Mini-mental state". A practical method for grading the cognitive state of patients for the clinician*. *J Psychiatr Res*, 1975. **12**(3): p. 189-98.

23. Lindeboom, J., et al., *Visual association test to detect early dementia of the Alzheimer type*. J Neurol Neurosurg Psychiatry, 2002. **73**(2): p. 126-33.
24. Wilson, B., J. Cockburn, A. Baddeley, and R. Hiorns, *The development and validation of a test battery for detecting and monitoring everyday memory problems*. J Clin Exp Neuropsychol, 1989. **11**(6): p. 855-70.
25. Van der Elst, W., M.P. Van Boxtel, G.J. Van Breukelen, and J. Jolles, *Normative data for the Animal, Profession and Letter M Naming verbal fluency tests for Dutch speaking participants and the effects of age, education, and sex*. J Int Neuropsychol Soc, 2006. **12**(1): p. 80-9.
26. D., W., *WAIS-III: Wechsler Adult Intelligence Scale*. Psychological Corporation, 1997.
27. Krabbendam, L., M.E. de Vugt, M.M. Derix, and J. Jolles, *The behavioural assessment of the dysexecutive syndrome as a tool to assess executive functions in schizophrenia*. Clin Neuropsychol, 1999. **13**(3): p. 370-5.
28. Shulman, K.I., *Clock-drawing: is it the ideal cognitive screening test?* Int J Geriatr Psychiatry, 2000. **15**(6): p. 548-61.
29. Warrington EK, J.M., *The visual object and space battery perception*. 1991.
30. Reitan, R., *Validity of the Trail Making Test as an Indicator of Organic Brain Damage*. Percept Mot Skills., 1958. **8**: p. 271-276.

## Acknowledgements

Neuropathological evaluation was performed by A.J.M.R. and the NBB, supported by S.K.R. and J.J.M.H. Quantitative pathology analysis were performed by S.K.R. and P.F.H. Neuropsychological assessment and collection of data for the 100-plus Study were performed by M.G., M.v.d.H., D.D., and L.M.C.L. Data analysis was performed by S.K.R., supported by S.A.M.S., M.Z., L.M.C.L., and M.H. Underlying data was verified by S.K.R., P.F.H., J.J.M.H., and H.H. The research was supervised by H.H. and J.J.M.H. Design of the research involved S.K.R., J.J.M.H., and H.H. The 100-plus Study was initiated by H.H. and supported by P.S. Design of the neurocognitive testing procedures of the 100-plus Study was supported by S.A.M.S. All authors commented on previous versions of the manuscript. All authors read and approved the final manuscript. We thank and acknowledge all participating centenarians and their family members. Moreover, we would like to thank and acknowledge all other brain donors and the NBB staff for the great cooperation.

## Conflicts

The authors declare that they have no competing interest.

## **Sources of funding**

This work was supported by BrightFocus A2021031S, VUmc foundation, and Surf Sara (Surf 2022.031). H.H is supported by ABOARD, a public-private partnership receiving funding from ZonMw (73305095007) and Health~Holland, Topsector Life Sciences & Health (PPP-allowance; LSHM20106), the Hans und Ilse Breuer Stiftung (2020), the HorstingStuit Foundation (2018), and the Dutch Research Council (Aspasia premie 015.016.059). The funders of the study had no role in the design of the study, data collection, data analysis, data interpretation, or writing of the report.

## **Consent statement**

The study protocol was approved by the Medical Ethics Committee of the Amsterdam UMC. Informed consent was obtained from all participants. Brain donors consented to brain donation. The study was conducted in accordance with the Declaration of Helsinki.

## **Key words**

Centenarians, amyloid-beta, aging, Alzheimer's disease, neuropathology, quantitative pathology, QuPath, *APOE*, cognition.

**Figure 1. Quantitative cortical A $\beta$ -load.** For 95 centenarians and 27 Alzheimer's disease (AD) patients, we analyzed the middle frontal gyrus, inferior parietal lobe, temporal pole and occipital pole (A). Digital images immunohistochemically stained for A $\beta$  using the 6F/3D antibody in (B) were manually annotated for grey matter as the region of interest (C). Hereafter, a pre-trained pixel classifier was applied to detect A $\beta$  immuno-positivity (D). The background and A $\beta$  immuno-positivity are annotated with yellow and brown, respectively. A $\beta$ -load was quantified as the percentage of cortex positive for A $\beta$  (D). A $\beta$ -load percentages included all A $\beta$  positive deposits with a minimal diameter of 10  $\mu$ m, mainly consisting of diffuse A $\beta$  plaques (E), cored and compact- A $\beta$  plaques (F), cerebral amyloid angiopathy (CAA) (G) and subpial amyloid deposition (H). Scale bars correspond to 2mm (B-D) and 20 $\mu$ m (E-H). This is an example image from the frontal cortex of a centenarian with an A $\beta$ -load of 3.9% and a Thal phase of 5.

**Figure 2. Centenarians have lower Thal phase and cortical A $\beta$ -load compared to AD patients.** (A) Density distribution of the Thal phases in the centenarian and AD cohorts. (B) Cortical A $\beta$ -load (%) in the frontal, parietal, temporal and occipital cortices in centenarians versus AD patients. Kruskal-Wallis tests were used to compare A $\beta$ -load in different regions within and between cohorts. Boxplots illustrate median, interquartile range and the minimum and maximum observed values. Asterisks indicate significance differences, with p-values (\*  $\leq$ 0.05, \*\*  $\leq$ 0.01, and \*\*\*  $\leq$ 0.001, \*\*\*\*  $\leq$ 0.0001). See Figure S1 for images of A $\beta$  immunopositivity in the frontal cortex representing the median and interquartile range in centenarians compared to AD patients. (C) Spearman correlations between A $\beta$  pathology measurements. Color, size of the circles indicates the strength of the Spearman correlation coefficient, which is also given in each cell. Only significant correlations are given (p<0.05). For all graphs, p-values were corrected for false discovery rates (FDR) using Benjamini & Hochberg method.

**Figure 3. The relation between Thal phase and cortical A $\beta$ -load.** (A) A $\beta$ -load (%) in the frontal, parietal, temporal and occipital cortices per Thal phase and per cohort. For each brain donor, the A $\beta$ -load percentages in the different cortices are connected with a line. (B) Lower A $\beta$ -load in frontal, parietal and occipital cortices from centenarians with Thal phase 4-5 compared to AD patients with Thal phase 4-5. Boxplots illustrate median, interquartile range and the minimum and maximum observed values. Kruskal-Wallis tests were used to compare A $\beta$ -load between cohorts, and asterisks indicate the significance with p-values (\*  $\leq$ 0.05, \*\*  $\leq$ 0.01, and \*\*\*  $\leq$ 0.001). All p-values were corrected for false discovery rates (FDR) using Benjamini & Hochberg method.

**Figure 4. Cortical A $\beta$ -load and corresponding Thal A $\beta$  phase and APOE genotype in centenarians and AD patients.** Each row represents one brain donor (centenarians n=95, AD n=27), sorted on A $\beta$ -load in the frontal cortex. (A) The colors and the grey trace line of the heatmap represent cortical A $\beta$ -load in frontal, parietal, temporal and occipital cortices. The A $\beta$ -load heatmap demonstrates the strong inter-correlation between A $\beta$ -load in different regions, with the frontal cortex most affected and the temporal and occipital cortices least affected. Based on the maximum observed A $\beta$ -load in Thal phase 1-2 centenarians (<4%) and the A $\beta$ -load observed in the frontal cortex of AD patients, we divided the cohort into a subset of 62/95 (65%) centenarians with limited A $\beta$ -load and a subset of 33/95 (35%) with AD-associated levels of A $\beta$ -load (dashed line). (B) Corresponding Thal phases are plotted. This demonstrated the overall correlation between A $\beta$ -load and Thal phase, but also illustrates there are centenarians with Thal phase  $\geq$  3 but limited A $\beta$ -load. (C) Corresponding APOE genotypes (missing for two cases) are plotted. A group of APOE  $\epsilon$ 2 carriers is enriched at the bottom of the heatmap, but five  $\epsilon$ 2 carriers (25%) had AD-associated levels of A $\beta$ -load. Interestingly, half of the  $\epsilon$ 4-centenarians had limited A $\beta$ -load, indicating they were resilient to the putative increasing effect of APOE  $\epsilon$ 4 on A $\beta$ -load, as observed at the group level.

**Figure 5. APOE genotype is associated with cortical A $\beta$ -load in centenarians.** Kruskal-Wallis tests were used to compare cortical A $\beta$ -load and Thal phases between different APOE groups, with p-values (\*  $\leq$ 0.05, \*\*  $\leq$ 0.01, and \*\*\*  $\leq$ 0.001), corrected for false discovery rates (FDR) using Benjamini & Hochberg method.

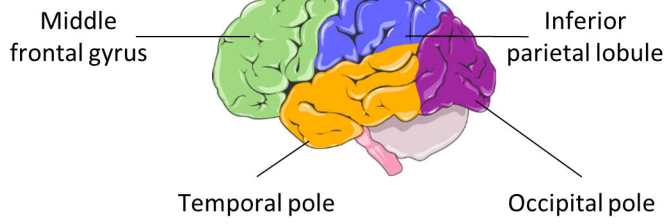
**Figure 6. Cortical A $\beta$ -load correlates with executive functioning and global cognition in centenarians.** (A) Regression analysis between A $\beta$  pathology (rows) and cognitive test scores (columns). Color and size of the circles indicate the strength of the regression coefficient, where blue indicates a positive correlation and red indicates a negative correlation. Analyses were corrected for covariates of age at death, sex (0 female, 1 male) and years of education (Table 1). p (\*  $\leq$ 0.05 and \*\*

$\leq 0.01$ ,  $***\leq 0.001$ ) corrected for false discovery rates (FDR) using Benjamini & Hochberg method. Regression coefficients and p-values can be found in Supplementary Table S2. (B) Median test score with interquartile range in the limited A $\beta$ -load (n=61) group compared to the group with AD-associated levels of A $\beta$ -load (n=27) (see Figure 4). Protective *APOE* genotypes are depicted in green (n=19), risk-increasing in red (n=7). Mann–Whitney U tests were used to compare test scores between the different groups. N=88. See Table 1 for details on cognitive performance.



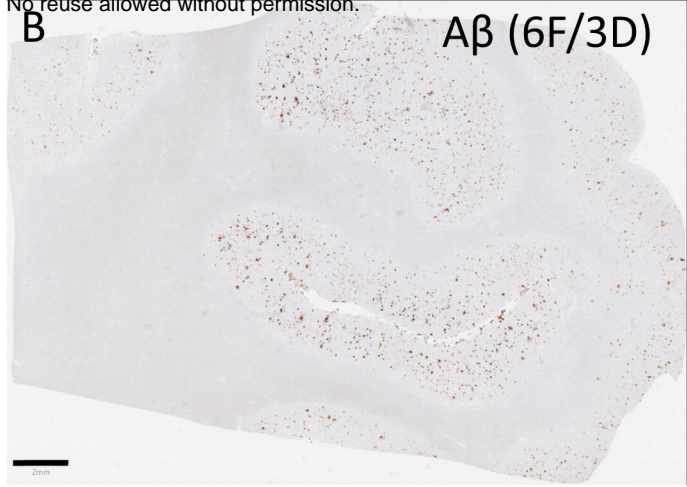
A

95 centenarians  
27 AD patients



B

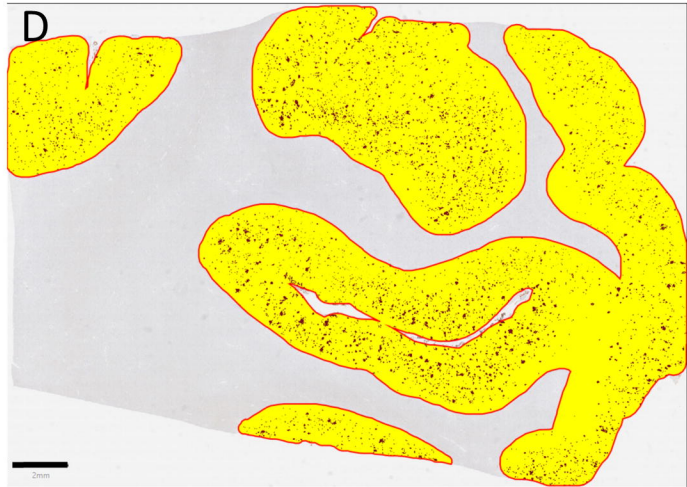
A $\beta$  (6F/3D)



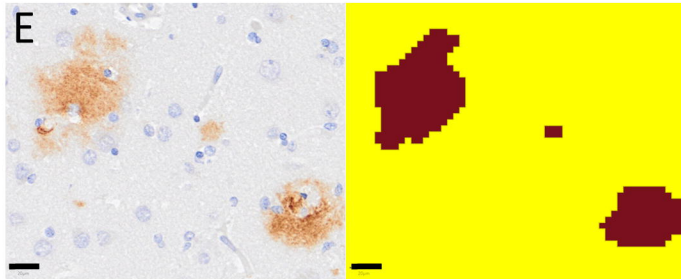
C



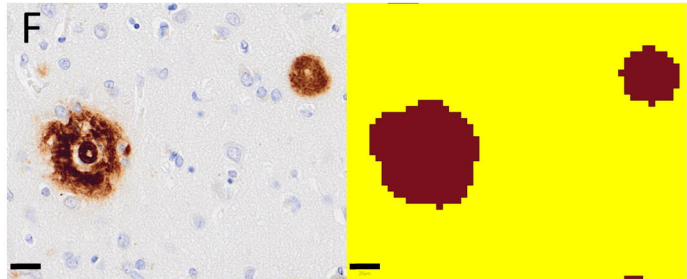
D



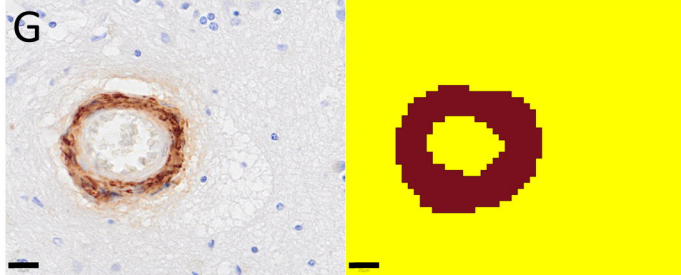
E



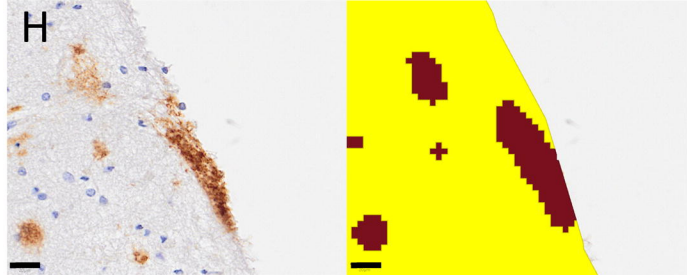
F

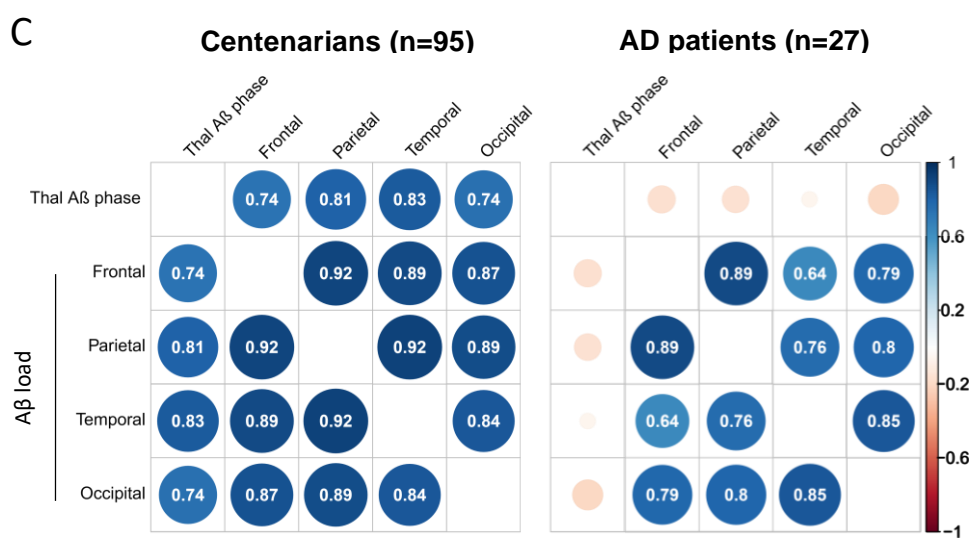
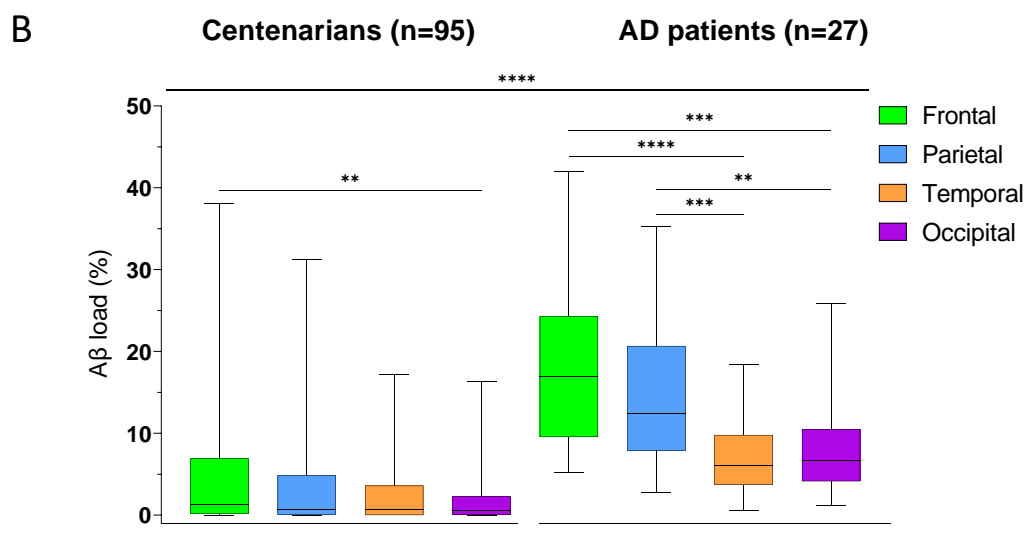
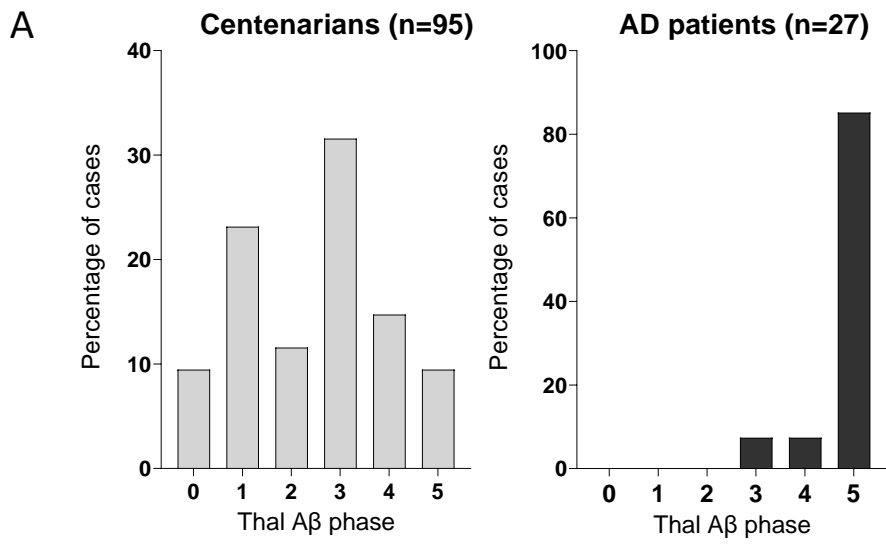


G



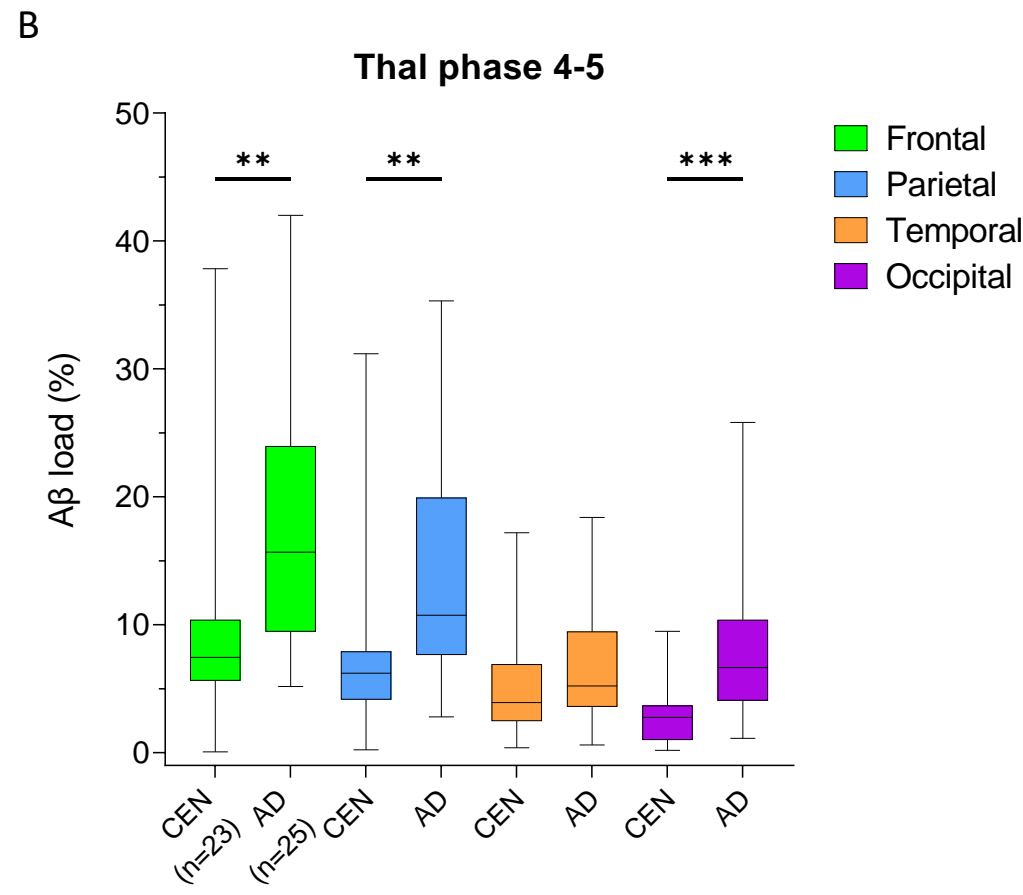
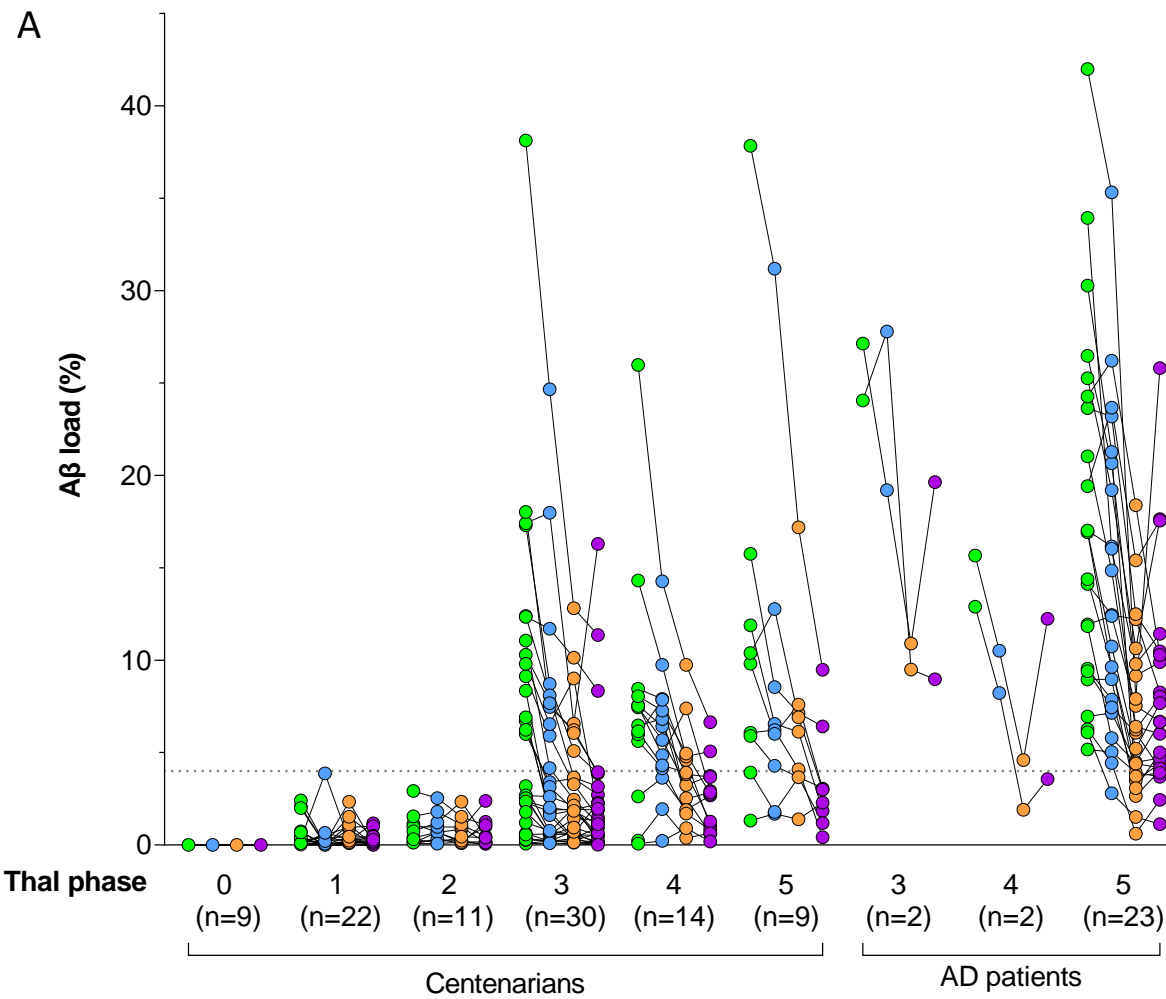
H



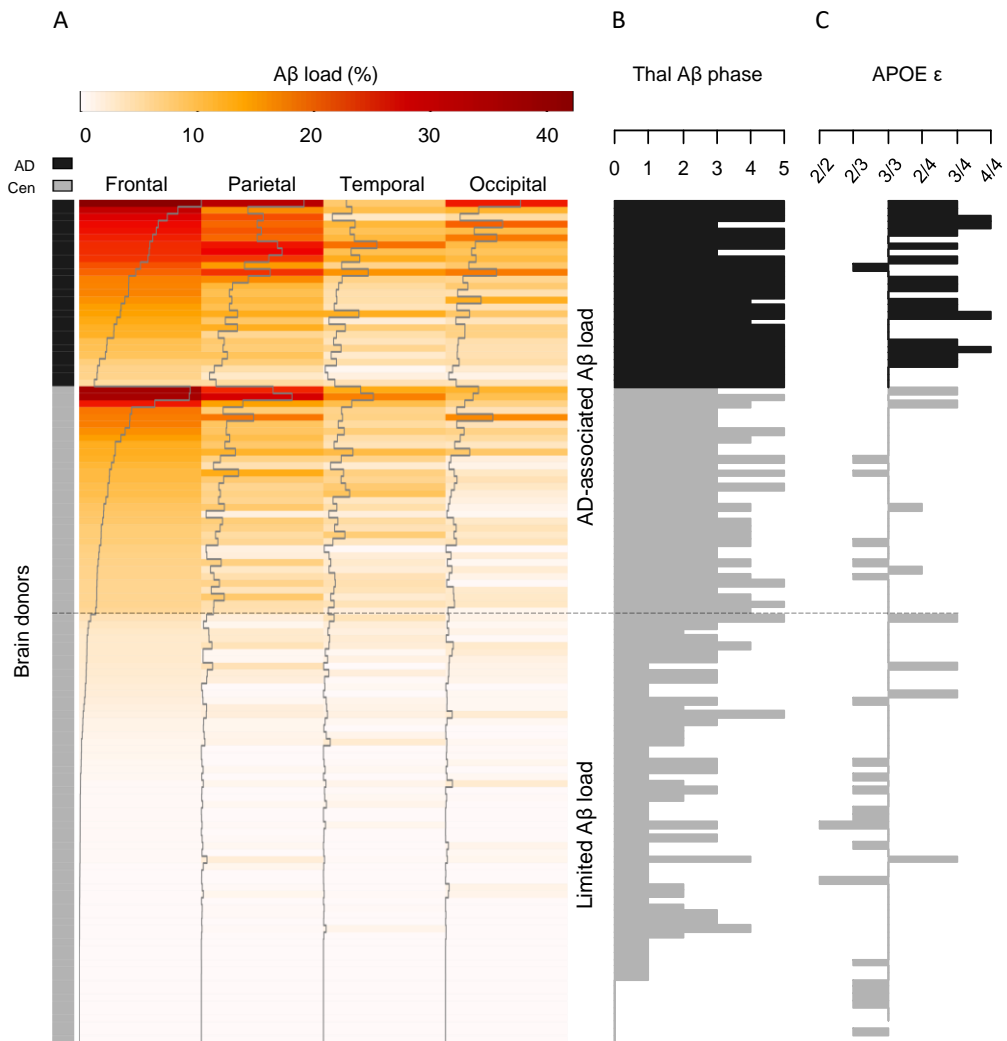


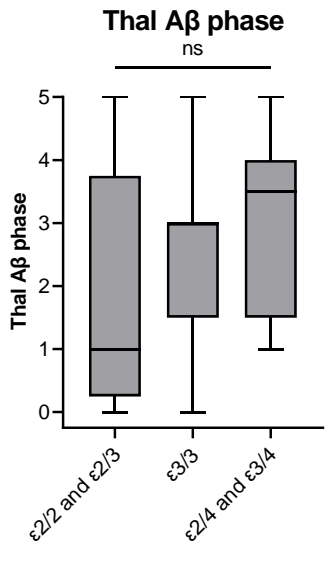
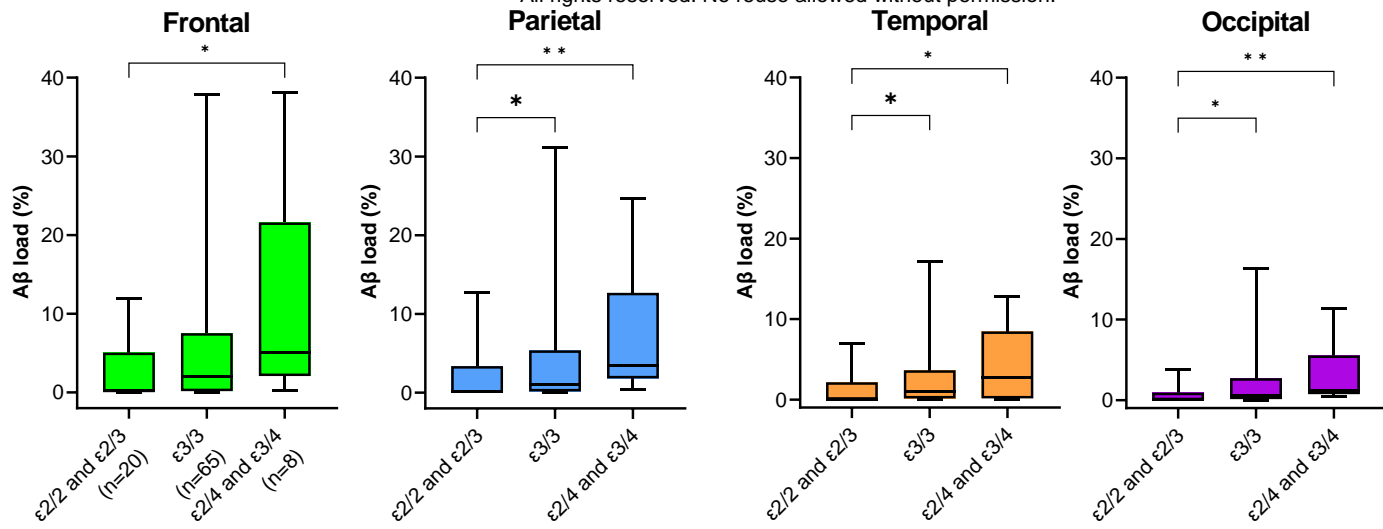


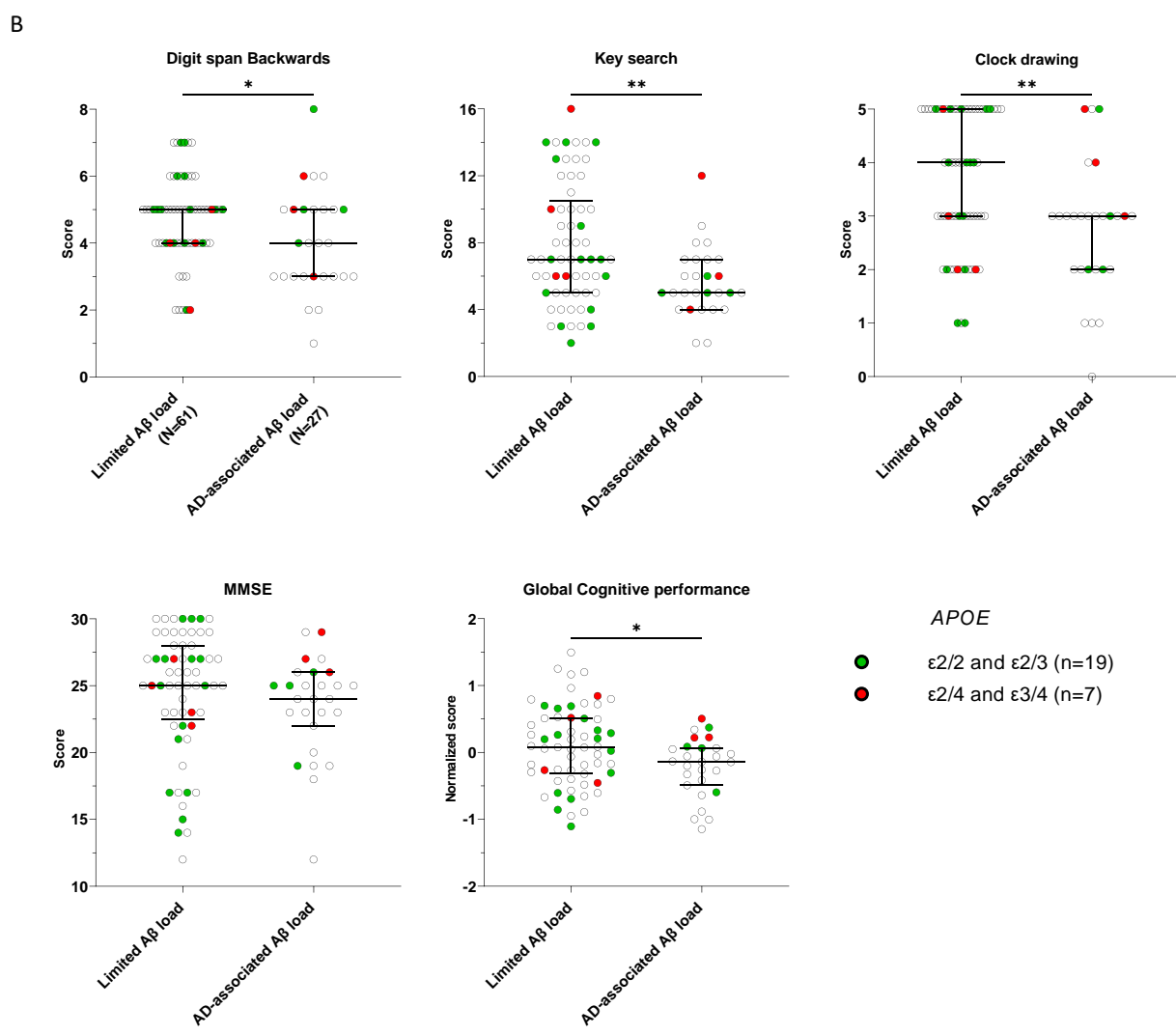
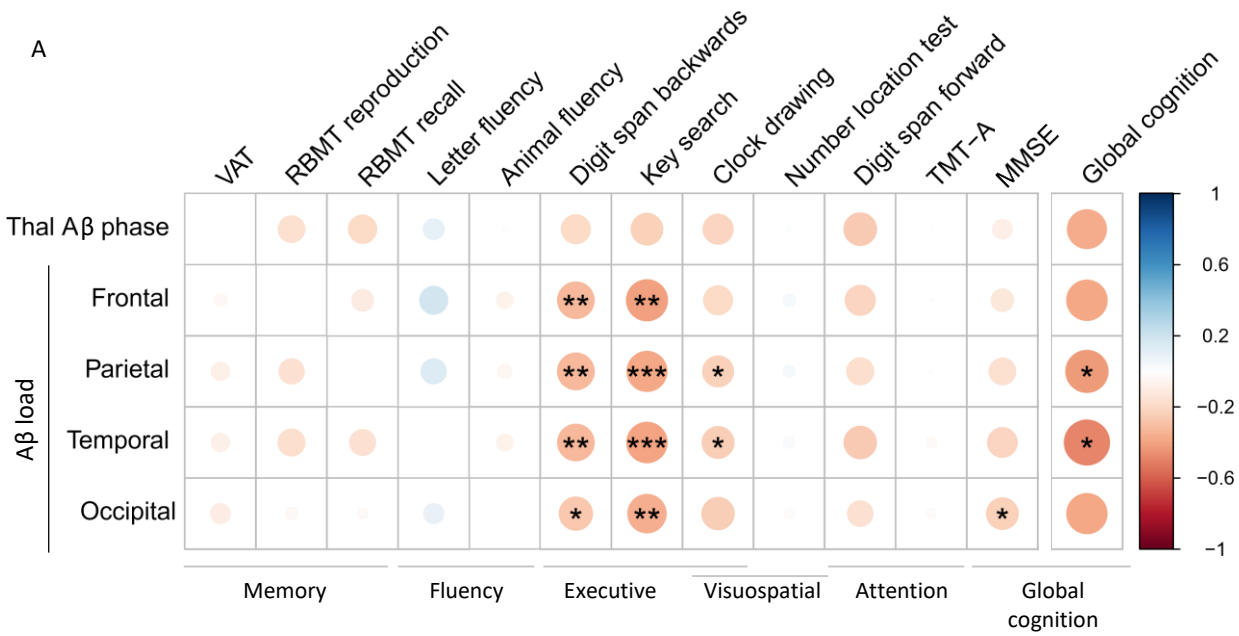
- Frontal
- Parietal
- Temporal
- Occipital











**Table 1. Demographics of the two cohorts and cognitive performance in the centenarian cohort.** Overview of the cognitive domains and tests analyzed in relation to A $\beta$  pathology in 88 centenarians. Minimum, maximum, interquartile range (IQR) and median test scores are given for the 88 centenarian cohort. Abbreviations: CEN= centenarians; AD= Alzheimer’s disease; IQR= interquartile range; NA = not available.

<b>Demographics</b>						
	<b>N</b>	<b>Female (%)</b>	<b>Median age at death (IQR)</b>	<b>Median years of education (IQR)</b>	<b>APOE (2/2 + 2/3   3/3   2/4 + 3/4 + 4/4   NA)</b>	
<b>CEN</b>	95	71 (75%)	103.5 (102.3 - 104.7)	9 (7-12)	2 + 18   65   2 + 6 + 0   2	
<b>AD</b>	27	14 (52%)	86.0 (79.50 - 90.5)	NA	0 + 1   10   0 + 12 + 4   0	
<b>Cognitive performance</b>						
<b>Cognitive domain</b>	<b>Test</b>	<b>Subtest/scoring</b>	<b>Range (bad-good)</b>	<b>Minimum</b>	<b>Maximum</b>	<b>Median (IQR)</b>
<b>Overall cognitive functioning</b>	MMSE[22]		0-30	12	30	25 (22-27)
<b>Memory</b>	VAT[23]	Total trials (1+2)	0-12	0	12	7 (4.8-10)
	Rivermead Behavioral Memory Test (RBMT)[24]	Immediate Recall	0-42	1	22	7 (6-8.9)
		Delayed Recall	0-42	0	19	4 (3-7.8)
<b>Verbal Fluency</b>	Letter Fluency-DAT[25]	1 minute	NA	6	57	24.5 (17.7-30.5)
	Animal Fluency [25]	1 minute	NA	1	24	10.5 (7-14)
	VAT[23]	Naming	0-6	3	6	6 (5-6)
<b>Executive functions</b>	Digit span[26]	Backwards	0-14	1	8	5 (4-5)
	BADS[27]	Key search raw score	0-16	2	16	6 (5-9)
	Clock Drawing Test[28]	Shulman	0-5	0	5	3(2-5)
	Visual Object and Space Perception (VOSP) Battery[29]	Number location	0-10	2	10	9 (7-9)
<b>Attention</b>	Digit span[26]	Forward	0-14	4	11	7 (6-8)
	Trail Making test[30]	A (reversed time)		27	411	130 (92.3-187.2)

**Table 2. A $\beta$  negativity in the centenarian cohort.** The number and percentage of centenarians presenting no immunoreactivity for A $\beta$  (i.e. A $\beta$ -load 0%) per brain region and in the entire brain (i.e. Thal 0) for the centenarian cohort as a whole, and per *APOE* group. Percentages were calculated over the total number of cases in the (sub)group on the left. NA = not available.

	<b>N</b>	<b>Frontal</b>	<b>Parietal</b>	<b>Temporal</b>	<b>Occipital</b>	<b>All regions/Thal 0</b>
<b>Total</b>	95	9 (9%)	15 (16%)	23 (24%)	18 (19%)	9 (9%)
<b><i>APOE</i></b>						
<b><math>\epsilon</math>2/2 + 2/3</b>	20	3 (15.0%)	5 (25%)	10 (50%)	9 (45%)	5 (25%)
<b><math>\epsilon</math>3/3</b>	65	4 (6%)	8 (12%)	10 (15%)	7 (11%)	2 (2%)
<b><math>\epsilon</math>2/4 + <math>\epsilon</math>3/4</b>	8	0 (0%)	0 (0%)	1 (13%)	0 (0%)	0 (0%)
<b>NA</b>	2	2 (100%)	2 (100%)	2 (100%)	2 (100%)	2 (100%)

