

1 **Identification of *Schistosoma haematobium* and *Schistosoma mansoni* linear B-cell epitopes with**
2 **diagnostic potential using *in silico* immunoinformatic tools and peptide microarray technology.**

3 **Short title: *Schistosoma haematobium* and *Schistosoma mansoni* B-cell epitopes.**

4 Arthur Vengesai^{1*}, Marble Manuwa², Herald Midzi³, Masimba Mandeya¹, Victor Muleya¹, Keith
5 Mujeni¹, Isaac Chipako¹, Dean Goldring⁴, Takafira Mduluza²

6 ¹Department of Biochemistry, Faculty of Medicine and Health Sciences, Midlands State University,
7 Senga Road, Gweru, Zimbabwe.

8 ²Department of Biotechnology and Biochemistry, Faculty of Science, University of Zimbabwe, P.O.
9 Box MP 167, Mt Pleasant, Harare, Zimbabwe.

10 ³Department of Applied Biosciences and Biotechnology, Faculty of Science, Midlands State
11 University, Senga Road, Gweru, Zimbabwe.

12 ⁴Department of Biochemistry, University of KwaZulu-Natal, P.B. X01, Carbis Road, Scottsville 3209,
13 South Africa.

14

15 *Corresponding author

16 E-mail : arthurvengesai@gmail.com (AV)

17

18

19

20

21

22

23

24

25

26

27

NOTE: This preprint reports new research that has not been certified by peer review and should not be used to guide clinical practice.

28 **Abstract**

29 **Introduction**

30 Immunoinformatic tools can be used to predict schistosome-specific B-cell epitopes with little
31 sequence identity to human proteins and antigens other than the target. This study reports an approach
32 for identifying schistosome peptides mimicking linear B-cell epitopes using in-silico tools and peptide
33 microarray immunoassays validation.

34 **Method**

35 Firstly, a comprehensive literature search was conducted to obtain published schistosome-specific
36 peptides and recombinant proteins with the best overall diagnostic performances. For novel peptides,
37 linear B-cell epitopes were predicted from target recombinant proteins using ABCpred, Bcepred and
38 BepiPred 2.0 *in-silico* tools. Together with the published peptides, predicted peptides with the highest
39 probability of being B-cell epitopes and the lowest sequence identity with proteins from human and
40 other pathogens were selected. Antibodies against the peptides were measured in sera, using peptide
41 microarray immunoassays. Area under the ROC curve was calculated to assess the overall diagnostic
42 performances of the peptides.

43 **Results**

44 Peptide AA81008-19-30 had excellent and acceptable diagnostic performances for discriminating *S.*
45 *mansoni* and *S. haematobium* positives from healthy controls with AUC values of 0.8043 and 0.7326
46 respectively for IgG. Peptides MS3_10186-123-131, MS3_10385-339-354, SmSPI-177-193, SmSPI-
47 379-388, MS3-10186-40-49 and SmS-197-214 had acceptable diagnostic performances for
48 discriminating *S. mansoni* positives from healthy controls with AUC values ranging from 0.7098 to
49 0.7763 for IgG. Peptides SmSPI-359-372, Smp126160-438-452 and MS3 10186-25-41 had acceptable
50 diagnostic performances for discriminating *S. mansoni* positives from *S. mansoni* negatives with AUC
51 values of 0.7124, 0.7156 and 0.7115 respectively for IgG. Peptide MS3-10186-40-49 had an
52 acceptable diagnostic performance for discriminating *S. mansoni* positives from healthy controls with
53 an AUC value of 0.7413 for IgM.

54 **Conclusion**

55 One peptide with a good diagnostic performance and 9 peptides with acceptable diagnostic
56 performances were identified using the immunoinformatic approach and peptide microarray
57 validation. There is need for evaluation with true negatives and a good reference.

58 **Keywords:** *Schistosoma haematobium*, *Schistosoma mansoni*, peptides, diagnosis, immunoassays,
59 bioinformatics, immunoinformatic tools

60

61

62

63

64

65

66

67 **1 Author summary**

68 Schistosomiasis commonly known as bilharzia is the third most significant tropical disease after
69 malaria and soil-transmitted helminthiases. Like other neglected tropical diseases common in
70 Zimbabwe, schistosomiasis remains mostly undiagnosed or undetected. This is partly due to the fact
71 that reliable identification of parasites requires expertise for specimen preparation, and microscopic
72 examination which are largely unavailable in most rural clinics. This limitation is further compounded
73 by the fact that the recommended microscopy-based methods for schistosomiasis diagnosis lack
74 sensitivity, especially in infections of low intensity. To overcome some of the caveats associated with
75 microscopy-based methods, highly sensitive serological tests have been utilized. Unfortunately, currently
76 available serological tests have low specificity and show cross-reactivity with other helminthic infections. One
77 way to mitigate the cross-reactivity challenge and increase the specificity, is to use immunoinformatic tools
78 and immunoassays to identify schistosomiasis species-specific immunogenic peptides mimicking B-cell
79 epitopes (short amino acid sequences of the antigen that reacts with antibodies). Utilizing immunoinformatic
80 tools coupled with peptide microarray immunoassay validation approach several peptides that can be used to
81 develop diagnostic tools for showing exposure to infection for people living in non-endemic or low-
82 transmission areas were identified in the current study.

83

84

85

86

87

88

89

90

91

92

93

94

95 **2 Introduction**

96 Schistosomiasis is a neglected tropical disease caused by blood flukes from the genus *Schistosoma*
97 (1). Zimbabwe is endemic to urogenital schistosomiasis caused by *Schistosoma haematobium* and
98 intestinal schistosomiasis caused by *Schistosoma mansoni* (2–4). Besides effective implementation of
99 mass drug administration (MDA) campaigns, access to safe water, improved sanitation and snail
100 control, diagnostic tests are important tools for achieving and sustaining schistosomiasis elimination
101 (1,5,6). Diagnostic tests are important for schistosomiasis surveillance and control. They play a vital
102 role in guiding the distribution of current program resources and the implementation and evaluation of
103 schistosomiasis intervention strategies (5,6).

104 The recommended method for schistosomiasis diagnosis is the detection of schistosome-specific eggs
105 in stool or urine specimens by microscopy. For urogenital schistosomiasis, the urine filtration
106 technique is the standard diagnostic method and for intestinal schistosomiasis, the Kato Katz technique
107 is the standard diagnostic method (6–8). In addition to high specificity (7,9), both techniques have
108 minimal operational costs (the test kits are inexpensive), low complexity and they are relatively easy
109 to perform in resource-limited field settings (6,8,9). Moreover, prepared Kato Katz slides can be stored
110 for months at room temperature for later microscopic examination.

111 Nevertheless, both techniques have significant disadvantages including, the need for qualified
112 personnel to prepare and examine slides, poor reproducibility and most importantly low sensitivity
113 (7,8,10,11). The sensitivity of the techniques is limited by the host infection intensity, daily variation
114 of schistosome egg excretion and uneven distribution of eggs within stool specimens (11).
115 Additionally, both methods are unable to diagnose recent infections (for instance, in cases where
116 worms have not yet started to produce eggs) or single worm/sex infections and the Kato Katz technique
117 is unable to analyse watery stool specimens (9). The lack of sensitivity especially in low endemic areas
118 and after successful control interventions lead to underestimation of true schistosomiasis prevalence

119 in such settings (7–10). Moreover, undetected and untreated individuals may continue schistosomiasis
120 transmission by contaminating fresh water sources with urine and faeces containing schistosome eggs
121 (1,9). Due to the numerous disadvantages associated with the microscope based techniques, the use of
122 other methods like molecular detection, circulating cathodic antigen (CCA), circulating anodic antigen
123 (CAA) has gathered pace (8). These alternative methods for schistosomiasis diagnosis have their own
124 advantages and limitations too.

125 Molecular methods targeting DNA of the parasite are more sensitive and specific and can detect early
126 stage schistosome infections (8). However, molecular methods require skilled laboratory personnel,
127 expensive and fragile equipment and they are time consuming, thus impeding their use as point-of-
128 care tools (POC) in remote resource-limited endemic areas (5). Although CCA and CAA allow for
129 rapid schistosomiasis diagnosis, these methods have their own shortcomings (3,7,8). The CCA test is
130 sensitive for moderate to high level *S. mansoni* infections but not for *S. haematobium* infections, and
131 its widespread use in poor rural endemic areas may be limited by its cost, currently around US \$1.75
132 per test (3,12,13). While the CAA test is more sensitive than the CCA, it is labour intensive and riddled
133 with a complicated assay procedure. This major drawback is further compounded by the fact that there
134 has not been any commercially available CAA tests to date (8).

135 To overcome some of the drawbacks associated with microscopy, molecular, CCA and CAA based
136 diagnostic tests; serological tests have been utilized (14). The use of serological tests has gained
137 traction due to higher sensitivities compared to microscopy based techniques (8). However, currently
138 available serological tests exhibit low specificity and are laden with cross-reactivity issues with other
139 helminthic infections due to shared antigenic epitopes (14,15). One way to mitigate the cross-
140 reactivity challenge and increase specificity is to use bioinformatic and proteomics tools to predict
141 schistosome specific immunodominant B-cell epitopes with little or no sequence identity to proteins
142 other than the target (4,14,16). However, to date, only a limited number of linear B-cell epitopes have
143 been identified for the serological diagnosis of *S. haematobium* and *S. mansoni* (17–19). It is against

144 this background that we present an approach for predicting schistosome specific peptides mimicking
145 linear B-cell epitopes using *in-silico* tools and peptide microarray technology. Several methods can be
146 used for the identification and prediction of linear B-cell epitopes. As previously described, two
147 methods *in-silico* prediction and identification of published peptides reduce the burden and costs
148 associated with epitope mapping by decreasing the list of potential targets for experimental testing
149 (20–24). Therefore, in the present study a comprehensive literature search was conducted to identify
150 published schistosome-specific peptides for inclusion in the peptide microarray immunoassays.

151 **3 Methods**

152 **3.1 Ethical approval**

153 Approval to conduct the study was obtained from Medical Research Council of Zimbabwe
154 (MRCZ/A/2571). Provincial Medical directors, District Medical officers, councillors, and headmen
155 provided the permission to carry out the study in the districts. Before enrolment, the aims and
156 procedures of the study were explained to all participants and their parents or guardians in English or
157 Shona. Consent forms were supplied to the children's parents or guardians for signing. Enrolment into
158 the study was completely voluntary and parent or guardians were free to withdraw their children at
159 any time with no need of explanation.

160 **3.2 Study area and population**

161 Children living in schistosomiasis endemic areas were purposively selected for the cross-sectional
162 study. The children were permanent residents of Mount Darwin and Shamva rural districts located in
163 Mashonaland central (31°40'0" E longitude and 17°10'0" S latitude) Northeast of Zimbabwe. Negative
164 control sera were obtained from *Schistosoma* microscopy negative individuals without history of
165 exposure or contact with *Schistosoma* contaminated water. These negative control sera were obtained
166 from permanent residents of Glaudina a high density urban area located in Harare the capital city of
167 Zimbabwe.

168 **3.3 Blood collection**

169 Experienced local nurses collected approximately 5 ml of venous blood for the peptide microarray
170 serological assays from each participant. The 5ml blood limit was within the guidelines for children
171 issued by Medical Research Council of Zimbabwe research ethics committee.

172 **3.4 Parasitology examination**

173 Urine and stool specimens were collected between 10:00 am and 14:00 pm for optimal egg passage
174 necessary for diagnosis of schistosomiasis. The specimens were stored away from direct sunlight until
175 processing. The urine filtration technique was used in the diagnosis of *S. haematobium*. This was
176 repeated for three consecutive days to avoid misdiagnosis due to day-to-day egg variation. *S. mansoni*
177 was diagnosed using the Kato Katz method and the formal ether concentration technique to improve
178 accuracy. Participants were classified as infected if at least one parasitic egg was detected.

179 **3.5 Peptide selection and *in silico* prediction.**

180 Two methods were used for the identification and prediction of linear B-cell epitopes (peptides). These
181 were a comprehensive literature search for published synthetic peptides (25) and *in silico* prediction
182 of novel peptides. For novel peptides, a systematic scoping review (25) was conducted to identify
183 recombinant proteins with the best overall diagnostic performance with different serological assays
184 including protein microarray, ELISA and POC immunochromatographic tests for *S. haematobium* and
185 *S. mansoni*. The sequences and the alpha fold predicted structures of the identified recombinant
186 proteins were obtained from Uniprot. SignalP 6.0 was used to identify the presence of signal peptides.
187 Transmembrane domains were predicted using SOSUI and cellular localisation was predicted using
188 WoLF Psort II. DeepView/Swiss-PDB Viewer (www.expasy.org/spdbv/) was used for spatial location
189 of the candidate peptides on the recombinant protein crystal structures.

190 Linear B cell epitopes were predicted using three different programs namely ABCpred, Bcepred and
191 BepiPred 2.0. ABCpred uses artificial neural network, Bcepred predicts using physico-chemical
192 properties of amino acids and BepiPred 2.0 uses a random forest algorithm. Peptides with the lowest

193 sequence identity with human protein and proteins from other human pathogens were then selected
194 using the NCBI Protein BLAST to minimize cross reactivity. Peptides that had the highest probability
195 of being B-cell epitopes and the lowest sequence identity with proteins from human and other
196 pathogens were selected for inclusion on the peptide microarrays.

197 **3.6 Peptide microarray content**

198 The peptide microarrays were fabricated by PEPperPRINT GmbH (Heidelberg, Germany). The
199 peptide microarrays contained 16 identical sub-arrays (copies). Each sub-array contained 122 *S.*
200 *haematobium* and *S. mansoni* 9-16 amino acids long peptides printed randomly in duplicate. The
201 peptides on each subarray were framed by HA (YPYDVPDYAG, 5 spots) and polio
202 (YPYDVPDYAG, 3 spots) control peptides. Additionally, each sub-array was framed by glycine
203 spacers (G spots).

204 **3.7 Peptide microarrays immunoassay**

205 Immunoassays were performed by PEPperPRINT GmbH (Heidelberg, Germany) as previously
206 described (26,27). Briefly, the immunoassays involved two steps on the same microarray. The
207 preincubation step which was performed to identify false positive signals by binding of the fluorescent
208 labelled secondary antibody followed by the main incubation with serum and the secondary antibodies.
209 At each step there was pre-swelling of the peptide microarrays with washing buffer (PBS, pH 7.4 with
210 0.05% Tween 20) for 10 minutes. The peptide microarrays were scanned using an LI-COR Odyssey
211 Imaging System, scanning offset 0.65 mm, resolution 21 μm , scanning intensities of 7/7 (red = 680
212 nm / green = 800 nm). To ensure that all microarrays were responding correctly, all steps were repeated
213 with the Cy3-conjugated anti-HA control antibody and Cy3-conjugated anti-polio control antibodies.
214 Quantification of spot intensities was based on 16-bit gray scale tiff files. Microarray image analysis
215 was done with PepSlide1 Analyzer and resulted in raw data CSV files for each sample (green = 800
216 nm = IgM staining, red = 680 nm = IgG staining). A PEPperPRINT software algorithm calculated
217 averaged median foreground intensities (foreground-background signal) and spot-to-spot deviations

218 of spot duplicates and assembled the outcome in summary files. For duplicate spots a maximum spot-
219 to-spot deviation of 50% was tolerated, otherwise the corresponding intensity value was zeroed.

220 **3.8 Identifying schistome-specific antigenic peptides.**

221 The negative cut-off was determined by averaging the negative control readings (10 sera obtained
222 from schistosomiasis unexposed and uninfected individuals with no prior history of *Schistosoma*
223 infections) and adding 3 standard deviations. A positive response was defined as fluorescence intensity
224 above the negative cut-off for each specific peptide for both IgG and IgM. Peptides for which at least
225 one infected individual was positive were selected for further analysis. Statistical comparison between
226 groups was done by the Kruskal-Wallis equality-of-populations rank test and *p-values* less 0.05 were
227 considered statistically significant. Diagnostic accuracy was evaluated by receiver operating
228 characteristic (ROC) curve analysis. The area under the ROC curve (AUC) was calculated to assess
229 the overall diagnostic performance of peptides that were able to distinguish schistosome positives from
230 schistosome negatives or healthy controls. Data curation and analyses were performed with Microsoft
231 excel and Stata v17 (Stata, College Station, Texas, USA) respectively.

232 **4 Results**

233 **4.1 Demographic and parasitology characteristics**

234 The case control diagnostic accuracy study consisted of 135 participants [62.96 % (85) females and
235 37.04 % (50) males] with a median age of 9 (IQR: 4-12) from Mashonaland central (92.59 %) a high
236 schistosomiasis endemic area (2) and Harare (7.41 %). Among the participants Mashonaland central
237 43 were confirmed to be infected with *S. haematobium* and 36 confirmed to be uninfected with *S.*
238 *haematobium* by the urine filtration technique (**S1 file**). For *S. mansoni* 46 were confirmed to be
239 infected and 37 were confirmed to be uninfected by the Kato Katz method and the formal ether
240 concentration technique (**S1 file**). Ten participants without confirmed *Schistosoma* infections and
241 without a history of infection and contact with contaminated water were recruited from Glaudina a
242 high density urban area located in Harare (**S1 file**).

243 **4.2 Identification and characterisation *schistosome* recombinant proteins for novel peptides**
244 **prediction.**

245 Two recombinant proteins MS3_10385 a serine protease inhibitor (SERPIN) and MS3_10186 a
246 tetraspanin were selected for *S. haematobium* based on their overall diagnostic performances (**Table**
247 **1**). The two proteins were predicted to have a signal peptide attached to them indicating they are
248 utilised outside the cell. MS3_10385 and MS3_10186 were both predicted to be soluble proteins
249 indicating that they are not part of the transmembrane helix. Finally, these two proteins were predicted
250 to be part of the extracellular matrix where immunological reactions are likely to occur.

251 **Table 1: Properties and characteristics *S. haematobium* and *S. mansoni* recombinant proteins**

Description	Protein family	Gene name	Accession number	Source organism	Signal peptide	Transmembrane helix	Cellular localisation
Neuroserpin	SERPIN	MS3_10385	A0A095A7Z5	<i>S. haematobium</i>	Signal peptide cleavage site position 27 and 28	Soluble protein	Extracellular membrane
IPSE	Tetraspanin	MS3_10186	A0A095A2X3	<i>S. haematobium</i>	Signal peptide cleavage site position 20 and 21	Soluble protein	Extracellular membrane
RP26	SAPLIP	AAB81008	Q26536	<i>S. mansoni</i>	Signal peptide cleavage site position 18 and 19	Membrane protein	Extracellular membrane
SmSPI	SERPIN	SmSPI	G4LYU6	<i>S. mansoni</i>	Not signal peptide	Soluble protein	Mitochondria

252 Saposin-like proteins (SAPLIP)
253 Serine protease inhibitor (SERPIN)

254 For *S. mansoni* one protein AAB81008 a saposin-like protein (SAPLIP) was selected based on the
255 based overall diagnostic criteria. However, the second protein SmSPI a SERPIN was selected due to
256 its ability to detect early schistosome infections (28) and its potential to detect single worm infections.
257 AAB81008 was predicted to have a signal peptide attached to it and SmSPI was predicted not to
258 possess a signal peptide. AAB81008 was predicted to be a membrane protein and SmSPI was
259 predicted to be a soluble protein. AAB81008 was predicted to be part of the extracellular matrix.
260 SmSPI was predicted to be located in the mitochondria.

261 **4.3 Linear B-cell epitopes/peptides**

262 From the 122 peptides *S. haematobium* and *S. mansoni* peptides 40.98 % (n=50) were predicted with
263 ABCpred, 22.95 % (n=28) with Bepi Pred 2, 21.31 % (n=26) and the remaining 14.75 % (n=18) were
264 obtained from literature (S2 file). Tables 2 and 3 shows that from the 122 peptides, only 15.57 %
265 were able to distinguish schistosome positives from schistosome negatives or healthy controls.

Table 2. Diagnostic performance of peptides for *S. mansoni* IgG and IgM detection.

Peptide name	Linear sequence	Source organism	Antibody	Reference	p-value	ROC AUC	Std.erro r	95 % Confidence interval		Peptide prediction and selection
								Lower limit	Upper limit	
MS3_10186-119-35	VQCISESKRRRKYCRY	<i>S. haematobium</i>	IgG	<i>S. mansoni</i> negative	0.0328	0.6516	0.0607	0.53259	0.77058	ABCpred
				Healthy controls						
MS3_10186-123-131	SESKRRRKY	<i>S. haematobium</i>	IgG	<i>S. mansoni</i> negative	0.011	0.6219	0.0612	0.50202	0.74182	Bepi Pred 2
				Healthy controls						
MS3_10385-278-291	SIGVVDLFDPVKSD	<i>S. haematobium</i>	IgG	<i>S. mansoni</i> negative	0.0274	0.6475	0.0612	0.52755	0.76740	Bcepred
				Healthy controls						
MS3_10385-339-354	VDFHVTHPFICFIYDQ	<i>S. haematobium</i>	IgG	<i>S. mansoni</i> negative	0.0207	0.6301	0.0613	0.51002	0.75027	Bcepred
				Healthy controls						
SmSPI-177-193	MDDIPDDTGMLVNVF	<i>S. mansoni</i>	IgG	<i>S. mansoni</i> negative	0.0113	0.6539	0.0610	0.5344	0.77241	ABCpred
				Healthy controls						
SmSPI-378-388	NHPFICFIYDQ	<i>S. mansoni</i>	IgG	<i>S. mansoni</i> negative	0.01	0.6392	0.0612	0.51923	0.75926	Bcepred
				Healthy controls						
SmSPI-362-378	IFVPISAVLPDIDFNV	<i>S. mansoni</i>	IgG	<i>S. mansoni</i> negative	0.0287	0.6486	0.0607	0.52965	0.76764	ABCpred
				Healthy controls						
AAB81008-19-30	INQPELEFGYKD	<i>S. mansoni</i>	IgG	<i>S. mansoni</i> negative	0.0019	0.6531	0.0599	0.53559	0.77052	Bepi Pred 2
				Healthy controls						
SmSP1-310-323	LKSMGIVDLFNPVA	<i>S. mansoni</i>	IgG	<i>S. mansoni</i> negative	0.0149	0.6525	0.0565	0.54170	0.77052	Bepi Pred 2
				Healthy controls						
SmSP1_359_372	TSPIFVPISAVLPD	<i>S. mansoni</i>	IgG	<i>S. mansoni</i> negative	0.004	0.7124	0.0560	0.60261	0.82218	Bepi Pred 2
				Healthy controls						
Smp 126160-438-452	LVTPEKYYSSLPGN	<i>S. mansoni</i>	IgG	<i>S. mansoni</i> negative	0.0022	0.7156	0.0559	0.605	0.82218	Published
				Healthy controls						
MS3_10186-25-41	YCLRLYDGTYENGSYT	<i>S. haematobium</i>	IgG	<i>S. mansoni</i> negative	0.0035	0.7115	0.0580	0.59781	0.82522	ABCpred
				Healthy controls						
MS3_10186-40-49	PGSVCVPLIH	<i>S. haematobium</i>	IgG	<i>S. mansoni</i> negative	0.015	0.6604	0.0496	0.56315	0.75765	Bcepred
				Healthy controls						
AAB81008-181-196	STMDPDSACMTMHMCS	<i>S. mansoni</i>	IgG	<i>S. mansoni</i> negative	0.0226	0.6710	0.0593	0.55466	0.78729	ABCpred
				Healthy controls						
SmSPI-197-214	FWESPFEPHYTKIENFDI	<i>S. mansoni</i>	IgG	<i>S. mansoni</i> negative	0.05	0.5793	0.0643	0.45339	0.70525	Bepi Pred 2
				Healthy controls						
Smp 150390.1-216-230	SLPSNAHNNDNSSD	<i>S. mansoni</i>	IgG	<i>S. mansoni</i> negative	0.0131	0.6713	0.0608	0.55217	0.79037	Published
				Healthy controls						
MS3_10186-105-121	ISSIQKCVYGENGMVQ	<i>S. haematobium</i>	IgM	<i>S. mansoni</i> negative	0.0123	0.6898	0.0593	0.57352	0.80604	ABCpred
				Healthy controls						
MS3_10186-40-49	PGSVCVPLIH	<i>S. haematobium</i>	IgM	<i>S. mansoni</i> negative	0.0158	0.6387	0.0582	0.52379	0.75353	Bcepred
				Healthy controls						

267 The peptide name was derived from the gene name followed by the position of the peptide amino acid sequence on the protein.
268 p-values were determined by the Kruskal-Wallis equality-of-populations rank test and p-values less than 0.05 were considered significant.
269

270 **Table 3. Diagnostic performance of peptides for *S. haematobium* IgG and IgM detection.**

Peptide name	Linear sequence	Source organism	Antibody	Reference	p-value	ROC AUC	Std.erro r	Confidence interval		Peptide prediction and selection
								Lower limit	Upper limit	
SmSPI-177-193	MDDIPDDTGMILVNVF	<i>S. mansoni</i>	IgG	<i>S. haematobium</i> negative	0.032	0.372	0.0647	0.24602	0.49946	ABCpred
				Healthy controls		0.6302		0.42153	0.83894	
AAB81008-19-30	INQPELEFGYKD	<i>S. mansoni</i>	IgG	<i>S. haematobium</i> negative	0.0384	0.4464	0.0666	0.31587	0.57690	Bepi Pred 2
				Healthy controls		0.7326		0.0810	0.5786	
SmSPI-165-181	DQSQNGLEKFFMDDIP	<i>S. mansoni</i>	IgG	<i>S. haematobium</i> negative	0.0373	0.4092	0.0650	0.28180	0.53668	Bepi Pred 2
				Healthy controls		0.6674		0.1017	0.46811	
AAB81008-19-30	INQPELEFGYKD	<i>S. mansoni</i>	IgM	<i>S. haematobium</i> negative	0.0294	0.3692	0.0640	0.24367	0.49470	Bepi Pred 2
				Healthy controls		0.6116		0.1053	0.40522	

271 The peptide name was derived from the gene name followed by the position of the peptide amino acid sequence on the protein.

272

273 p-values were determined by the Kruskal-Wallis equality-of-populations rank test and p-values less than 0.05 were considered significant.

274 **4.4 Diagnostic performance for discriminating *S. mansoni* positives from healthy**
275 **controls.**

276 Out of the 16 peptides that were able to distinguish *S. mansoni* positive sera from schistosome
277 negative or healthy controls sera, only peptide AA81008-19-30 had an excellent diagnostic
278 performance for discriminating *S. mansoni* positives from healthy controls with an AUC value
279 of 0.8043 for IgG peptide microarray (**Fig 1**). Six peptides MS3_10186-123-131, MS3_10385-
280 339-354, SmSPI-177-193, SmSPI-379-388, MS3-10186-40-49 and SmS-197-214 had
281 acceptable diagnostic performances for discriminating *S. mansoni* positives from healthy
282 controls with AUC values ranging from 0.7098 to 0.7763 for IgG peptide microarray (**S3 file**).
283 For IgM peptide microarray the ROC curve analysis for discriminating *S. mansoni* positives
284 from the healthy controls yielded AUC values of 0.602 and 0.7413 for MS3 10186-105-121
285 and MS3 10186-40-49 respectively (**S3 file**). Peptide MS3 10186-40-49 had acceptable
286 diagnostic performances for discriminating *S. mansoni* positives from healthy controls for both
287 IgG and IgM (**Fig 2**).

288 **Fig 1:** Diagnostic performance for **Peptide AAB81008-19-30 a. Peptide AAB81008-19-30**
289 receiver operating characteristic (ROC) curve and area under the ROC curve (AUC) for
290 discrimination of *S. mansoni* positives from healthy controls for IgG. b. **Peptide AAB81008-**
291 **19-30** receiver operating characteristic (ROC) curve and area under the ROC curve (AUC) for
292 discrimination of *S. mansoni* positives from healthy controls for IgG.

293 **Fig 2:** Diagnostic performance for **Peptide MS3 10186-40-49 a. Peptide MS3 10186-40-49**
294 receiver operating characteristic (ROC) curve and area under the ROC curve (AUC) for
295 discrimination of *S. mansoni* positives from healthy controls for IgG. b. **Peptide MS3 10186-**
296 **40-49** receiver operating characteristic (ROC) curve and area under the ROC curve (AUC) for
297 discrimination of *S. haematobium* positives from healthy controls for IgM.

298 **4.5 Diagnostic performance for discriminating *S. mansoni* positives from *S. mansoni***
299 **negatives.**

300 Three peptides SmSPI-359-372, Smp126160-438-452 and MS3 10186-25-41 had acceptable
301 diagnostic performances for discriminating *S. mansoni* positives from *S. mansoni* negatives
302 with AUC values of 0.7124, 0.7156, 0.7115 respectively for IgG peptide microarray (**fig 3**).
303 For IgM peptide microarray the ROC curve analysis for discriminating the *S. mansoni* positives

304 from the *S. mansoni* negatives yielded AUC values of 0.6898 and 0.6387 for MS3 10186-105-
305 121 and MS3 10186-40-49 respectively (**S3 file**).

306 **Fig 3:** IgG receiver operating characteristic (ROC) curves and area under the ROC curves
307 (AUC) for discriminating *S. mansoni* positives from *S. mansoni* negatives for IgG peptide
308 microarray. a. **Peptide SmpSPI-359-372** b. **Peptide Smp126160-438-452** c. **Peptide MS3**
309 **10186-25-41**

310 **4.6 Diagnostic performance for discriminating *S. haematobium* positives from *S.*** 311 ***haematobium* negatives and healthy controls.**

312 The four peptides that were able to distinguish *S. haematobium* positives from *S. haematobium*
313 negatives or healthy controls had inaccurate diagnostic performances for discriminating *S.*
314 *haematobium* positives from *S. haematobium* negatives for both IgG and IgM peptide
315 microarray (**S4 file**). Peptides SmSPI-177-193 and SmSPI-165-181 had poor diagnostic
316 performances for discriminating *S. haematobium* positives from healthy controls for IgG
317 peptide microarray. Peptide AAB81008 had an acceptable diagnostic performance for
318 discriminating *S. haematobium* positives from healthy controls with an AUC value of 0.7326
319 for IgG peptide microarray. Peptide AAB81008 was able to discriminate both *S. haematobium*
320 and *S. mansoni* positives from healthy controls (**Fig 1**).

321 **4.7 Spatial location of novel peptides with good and acceptable diagnostic** 322 **performance on the recombinant proteins 3D structures.**

323 Understanding the spatial location of peptides within a protein crystal structure is crucial for
324 unravelling the intricacies of molecular interactions and biological functions. In our study
325 DeepView/Swiss-PDB Viewer (www.expasy.org/spdbv/) was used for spatial location of the
326 candidate peptides on the protein crystal structure of recombinant proteins (MS3_10385;
327 MS3_10186; AAB81008 and SmSPI) (**Fig 4**). Peptides AAB1008-19-30, MS3_10186-123-
328 131 and MS3_10385-339-354 were located at the exterior surface of their respective protein
329 structures. Most of the target peptide amino acid sequence was located at the exterior surface

330 of the protein with a few amino acid residues encapsulated within the protein for peptides
331 SmSPI_359-372 and MS3_10186-2541. Lastly, most of the amino acid residues for peptides
332 for SmSPI_177-193, SmSPI_378-388, MS3_10186-40-49 and SmSPI-197-214 were
333 encapsulated within the protein structure and only a few amino acid residues were at the
334 exterior surface of the protein.

335 **Fig 4:** Spatial location of novel peptides with good and acceptable diagnostic performances on
336 the recombinant proteins 3D structures. DeepView/Swiss-PDB Viewer was used to determine
337 the spatial location of the peptides on the crystal structure of recombinant proteins
338 (MS3_10385; MS3_10186; AAB81008 and SmSPI).

339 **5 Discussion**

340 As countries target the elimination of schistosomiasis as a public health problem and as the
341 prevalence of the disease decreases due to MDA campaigns, it has become apparently clear
342 that more sensitive field-applicable diagnostics are needed for the effective management and
343 surveillance of schistosome infections as advocated by the WHO (29–31). This is particularly
344 important in low endemicity areas, where microscope-based diagnostic methods may
345 underestimate the true prevalence of the disease (11,32). This background has provided an
346 impetus for this study in the identification of peptides that can be employed in the development
347 of antibody-based diagnostic tools using an immunoinformatic approach and peptide
348 microarray immunoassay validation.

349 Carvalho and colleagues, 2022 and Lopes and colleagues, 2017 had previously used
350 immunoinformatic approaches and immune-assay validation to identify *S. haematobium* and
351 *S. mansoni* peptides with diagnostic potential (18,19). This study identified one peptide
352 (AA81008-19-30) that had an excellent diagnostic performance for discriminating *S. mansoni*
353 positives from healthy controls for IgG. Six peptides that had acceptable diagnostic
354 performances for discriminating *S. mansoni* positives from healthy controls were identified for
355 IgG. For discriminating *S. mansoni* positives from *S. mansoni* negatives three peptides were

356 identified for IgG. Peptide AAB81008 was shown to have an acceptable diagnostic
357 performance for discriminating *S. haematobium* positives from *S. haematobium* negatives.
358 Peptide AAB81008 was able to discriminate both *S. haematobium* and *S. mansoni* positives
359 from healthy controls.

360 Eighteen previously published peptides were included on the peptide microarray, 10 from our
361 previous study Vengesai and colleagues, 2022 (26) and 8 peptides from two studies by
362 Carvalho and Colleagues, 2022 and Lopes and Colleagues, 2017 (18,19). Despite Carvalho
363 and Colleagues, 2022 and Lopes and Colleagues, 2017 showing that peptides Sm168240,
364 Smp_136560 (1564-1578), Smp_126160(438-452), Sm140560, Sm041370,
365 Smp_180240(339-353), Smp_150390.1(216-230), Smp_093840(219-233) had AUC values
366 ranging from 0.76 (95 % CI 0.6024-0.9213) to 0.99 (95 % CI 0.987-100) results from this
367 current study show that only one published peptide Smp 126160-438-452 had an acceptable
368 diagnostic performance with an AUC value of 0.7115 (95% CI 0.605-0.82218). The findings
369 may be attributed to the fact that peptide microarray immunoassays were used in the
370 determination of antibody reactivity against the peptides whilst in other two studies (18,19)
371 antibody reactivity was investigated using peptide based serum IgG ELISA. Pertaining the
372 other 10 published peptides XP_035587815.1-269-283, XP_012797374.1-78-92,
373 AAZ29530.1-25-29, XP_012799745.1-16-30, P20287.1-58-72, AAA29903.1-222-237,
374 P09841.3-6-20, AAA29900.1-145-159, P09792.1-29-43, XP_035588858.1-206-220 none of
375 them showed a clear discrimination between the schistosome infected and uninfected groups
376 and these results are in agreement with findings from our previous study (26).

377 **5.1 Limitations and recommendations**

378 Ideally, to properly evaluate the performance of the identified peptides their diagnostic
379 accuracy need to be compared to a reference standard test. The reference standard test should

380 be able to discriminate the true positives and true negatives. The absence of a standard reference
381 test or absolute knowledge of the true positives was a significant limitation in the present study
382 (11,33,34). Despite the inappropriateness of doing so, Kato-Katz and urine filtration techniques
383 were used as the reference tests in the current study. The techniques lack sensitivity especially
384 in low endemicity settings; hence it is expected that some positive individuals were
385 misdiagnosed as false-negative (10,11). This might have contributed to the low diagnostic
386 performances of the some identified peptides. To circumvent this limitation, we propose use of
387 the latent class analysis previously described by Mesquita and colleagues, 2022, which
388 combines multiple test results to construct a standard reference outcome (11).

389 Unfortunately, like most currently available serological tests the peptides identified are not
390 useful for monitoring and evaluation programmes because antibodies to schistosome infections
391 remain detectable long after treatment (35). This limits the clinical value of antibody detection
392 for confirmation of the success of chemotherapy since specific antibodies continue to be
393 present long after the worms have disappeared (14,36). There may be certain antigens (for
394 example peptides) to which certain antibody isotype subclasses like IgG₄, disappear more
395 rapidly (35). These antibodies can be targeted to circumvent the limitation associated with
396 persisting antibodies. According to the WHO, serological and immunological tests are useful
397 for showing exposure to schistosome infection in people living in non-endemic or low-
398 transmission (37). Alternatively, the identified peptides can be used to develop serological tools
399 for showing exposure to infection for people living in non-endemic and low-transmission areas.

400 As urogenital and intestinal schistosomiasis are poverty related diseases prevalent in resource-
401 limited settings, cost is a major factor for developing diagnostics for the disease (38). The
402 peptide microarray technology described in this study is too complex and expensive for routine
403 clinical microbiology in resource-limited settings. There it is recommend that the peptides
404 discovered be transferred to a wide range of platforms including, enzyme-linked

405 immunosorbent assay, lateral flow, western blot, and bead-based assays, where they may
406 expedite diagnostics, epidemiology and vaccinology.

407 **5.2 Conclusion**

408 In conclusion, 1 peptide with a good diagnostic performance and 9 peptides with acceptable
409 diagnostic performance were identified using the immunoinformatic approach and peptide
410 microarray validation. Identified peptides maybe be used to develop diagnostic tools for
411 showing exposure to schistosome infection in people living in non-endemic or low-
412 transmission areas. Peptides SmPI-177-198 and SmSPI-379-388 may be used to develop a
413 chimeric protein for diagnosis of early *S. mansoni* and single worm infections. However, there
414 is need for validation of the findings with true negative controls from a non-endemic country
415 and a good reference tool.

416 **6 Acknowledgments**

417 We thank the communities of Shamva, and Mount Darwin rural districts in the Mashonaland
418 Central province of Zimbabwe for their participation, and support in the study. The authors
419 would like to acknowledge the valuable input of laboratory technicians from the University of
420 Zimbabwe who assisted in sample collection.

421 **7 References**

- 422 1. Schistosomiasis [Internet]. [cited 2023 May 24]. Available from:
423 <https://www.who.int/news-room/fact-sheets/detail/schistosomiasis>
- 424 2. Midzi N, Mduluzza T, Chimbari MJ, Tshuma C, Charimari L, Mhlanga G, et al.
425 Distribution of Schistosomiasis and Soil Transmitted Helminthiasis in Zimbabwe:
426 Towards a National Plan of Action for Control and Elimination. Kabatereine NB, editor.
427 PLoS Negl Trop Dis [Internet]. 2014 Aug 14 [cited 2020 Mar 3];8(8):e3014. Available
428 from: <http://dx.plos.org/10.1371/journal.pntd.0003014>
- 429 3. Nausch N, Dawson EM, Midzi N, Mduluzza T, Mutapi F, Doenhoff MJ. Field evaluation
430 of a new antibody-based diagnostic for *Schistosoma haematobium* and *S. mansoni* at the
431 point-of-care in northeast Zimbabwe [Internet]. 2014 [cited 2020 May 20]. Available
432 from: <http://www.biomedcentral.com/1471-2334/14/165>
- 433 4. Vengesai A, Naicker T, Kasambala M, Midzi H, Mduluzza-Jokonya T, Rusakaniko S, et
434 al. Clinical utility of peptide microarrays in the serodiagnosis of neglected tropical

- 435 diseases in sub-Saharan Africa: protocol for a diagnostic test accuracy systematic
436 review. 2021 Jul [cited 2022 Jan 9];11(7):e042279. Available from:
437 <https://pubmed.ncbi.nlm.nih.gov/34330850/>
- 438 5. Archer J, Barksby R, Pennance T, Rostron P, Bakar F, Knopp S, et al. Analytical and
439 Clinical Assessment of a Portable, Isothermal Recombinase Polymerase Amplification
440 (RPA) Assay for the Molecular Diagnosis of Urogenital Schistosomiasis. *Mol* 2020, Vol
441 25, Page 4175 [Internet]. 2020 Sep 11 [cited 2023 May 24];25(18):4175. Available
442 from: <https://www.mdpi.com/1420-3049/25/18/4175/htm>
- 443 6. Lim MD, Brooker SJ, Belizario VY, Gay-Andrieu F, Gilleard J, Levecke B, et al.
444 Diagnostic tools for soil-transmitted helminths control and elimination programs: A
445 pathway for diagnostic product development. *PLoS Negl Trop Dis* [Internet]. 2018 Mar
446 1 [cited 2023 May 24];12(3):e0006213. Available from:
447 <https://journals.plos.org/plosntds/article?id=10.1371/journal.pntd.0006213>
- 448 7. Mu Y, Gordon CA, Olveda RM, Ross AG, Olveda DU, Marsh JM, et al. Identification
449 of a linear B-cell epitope on the *Schistosoma japonicum* saposin protein, SjSAP4:
450 Potential as a component of a multi-epitope diagnostic assay. *PLoS Negl Trop Dis*
451 [Internet]. 2022 [cited 2023 May 24];16(7):e0010619. Available from:
452 <https://journals.plos.org/plosntds/article?id=10.1371/journal.pntd.0010619>
- 453 8. Hoermann J, Kuenzli E, Schaefer C, Paris DH, Bühler S, Odermatt P, et al. Performance
454 of a rapid immuno-chromatographic test (*Schistosoma* ICT IgG-IgM) for detecting
455 *Schistosoma*-specific antibodies in sera of endemic and non-endemic populations. *PLoS*
456 *Negl Trop Dis* [Internet]. 2022 [cited 2023 May 24];16(5):e0010463. Available from:
457 <https://journals.plos.org/plosntds/article?id=10.1371/journal.pntd.0010463>
- 458 9. Menezes DL, Santos CT de J, Oliveira YLDC, Campos VTC, Negrão-Corrêa DA,
459 Geiger SM, et al. Accuracy Study of Kato-Katz and Helmintex Methods for Diagnosis
460 of Schistosomiasis *Mansoni* in a Moderate Endemicity Area in Sergipe, Northeastern
461 Brazil. *Diagnostics* 2023, Vol 13, Page 527 [Internet]. 2023 Jan 31 [cited 2023 May
462 24];13(3):527. Available from: <https://www.mdpi.com/2075-4418/13/3/527/htm>
- 463 10. Colley DG, King CH, Kittur N, Ramzy RMR, Secor WE, Fredericks-James M, et al.
464 Evaluation, Validation, and Recognition of the Point-of-Care Circulating Cathodic
465 Antigen, Urine-Based Assay for Mapping *Schistosoma mansoni* Infections. *Am J Trop*
466 *Med Hyg* [Internet]. 2020 May 12 [cited 2023 May 24];103(1_Suppl):42–9. Available
467 from: https://www.ajtmh.org/view/journals/tpmd/103/1_Suppl/article-p42.xml
- 468 11. Mesquita SG, Caldeira RL, Favre TC, Massara CL, Beck LCNH, Simões TC, et al.
469 Assessment of the accuracy of 11 different diagnostic tests for the detection of
470 *Schistosomiasis mansoni* in individuals from a Brazilian area of low endemicity using
471 latent class analysis. *Front Microbiol*. 2022 Dec 15;13:4683.
- 472 12. Pearson MS, Tedla BA, Mekonnen GG, Proietti C, Becker L, Nakajima R, et al.
473 Immunomics-guided discovery of serum and urine antibodies for diagnosing urogenital
474 schistosomiasis: a biomarker identification study. *The Lancet Microbe* [Internet]. 2021
475 Nov 1 [cited 2023 May 26];2(11):e617–26. Available from:
476 <http://www.thelancet.com/article/S2666524721001506/fulltext>
- 477 13. Imai N, Rujeni N, Nausch N, Bourke CD, Appleby LJ, Cowan G, et al. Exposure,
478 infection, systemic cytokine levels and antibody responses in young children
479 concurrently exposed to schistosomiasis and malaria. *Parasitology*. 2011

- 480 Oct;138(12):1519–33.
- 481 14. Ogongo P, Kariuki TM, Wilson RA. Diagnosis of schistosomiasis mansoni: an
482 evaluation of existing methods and research towards single worm pair detection.
483 Parasitology [Internet]. 2018 Sep 1 [cited 2022 Mar 12];145(11):1355–66. Available
484 from: [https://www.cambridge.org/core/journals/parasitology/article/abs/diagnosis-of-](https://www.cambridge.org/core/journals/parasitology/article/abs/diagnosis-of-schistosomiasis-mansoni-an-evaluation-of-existing-methods-and-research-towards-single-worm-pair-detection/552001BF61F171FB60F11577DC42280A)
485 [schistosomiasis-mansoni-an-evaluation-of-existing-methods-and-research-towards-](https://www.cambridge.org/core/journals/parasitology/article/abs/diagnosis-of-schistosomiasis-mansoni-an-evaluation-of-existing-methods-and-research-towards-single-worm-pair-detection/552001BF61F171FB60F11577DC42280A)
486 [single-worm-pair-detection/552001BF61F171FB60F11577DC42280A](https://www.cambridge.org/core/journals/parasitology/article/abs/diagnosis-of-schistosomiasis-mansoni-an-evaluation-of-existing-methods-and-research-towards-single-worm-pair-detection/552001BF61F171FB60F11577DC42280A)
- 487 15. Ma L, Zhao W, Hou X, Liu M, Li Y, Shen L, et al. Identification of linear epitopes in
488 SjSP-13 of *Schistosoma japonicum* using a GST-peptide fusion protein microplate
489 array. Parasites and Vectors [Internet]. 2019 Oct 30 [cited 2020 Nov 22];12(1).
490 Available from: <https://pubmed.ncbi.nlm.nih.gov.ukzn.idm.oclc.org/31666115/>
- 491 16. Falconi-Agapito F, Kerkhof K, Merino X, Bakokimi D, Torres F, Van Esbroeck M, et
492 al. Peptide Biomarkers for the Diagnosis of Dengue Infection. Front Immunol. 2022 Jan
493 26;13:52.
- 494 17. de Oliveira EJ, Kanamura HY, Takei K, Hirata RDC, Valli LCP, Nguyen NY, et al.
495 Synthetic peptides as an antigenic base in an ELISA for laboratory diagnosis of
496 schistosomiasis mansoni. Trans R Soc Trop Med Hyg [Internet]. 2008 Apr 1 [cited 2022
497 Feb 15];102(4):360–6. Available from: <https://pubmed.ncbi.nlm.nih.gov/18314149/>
- 498 18. Carvalho GBF, Resende DM, Siqueira LMV, Lopes MD, Lopes DO, Coelho PMZ, et
499 al. Selecting targets for the diagnosis of *Schistosoma mansoni* infection: An integrative
500 approach using multi-omic and immunoinformatics data. PLoS One [Internet]. 2017
501 Aug 1 [cited 2022 Jan 9];12(8):e0182299. Available from:
502 <https://journals.plos.org/plosone/article?id=10.1371/journal.pone.0182299>
- 503 19. Lopes MD, Oliveira FM, Coelho IEV, Passos MJF, Alves CC, Taranto AG, et al.
504 Epitopes rationally selected through computational analyses induce T-cell proliferation
505 in mice and are recognized by serum from individuals infected with *Schistosoma*
506 *mansoni*. Biotechnol Prog [Internet]. 2017 May 1 [cited 2022 Feb 14];33(3):804–14.
507 Available from: <https://pubmed.ncbi.nlm.nih.gov/28371522/>
- 508 20. Van Regenmortel MHV. Structural and functional approaches to the study of protein
509 antigenicity [Internet]. Vol. 10, Immunology Today. Immunol Today; 1989 [cited 2021
510 Jun 14]. p. 266–72. Available from: <https://pubmed.ncbi.nlm.nih.gov/2478146/>
- 511 21. Giacò L, Amicosante M, Fraziano M, Gherardini PF, Ausiello G, Helmer-Citterich M,
512 et al. B-Pred, a structure based B-cell epitopes prediction server. Adv Appl Bioinforma
513 Chem [Internet]. 2012 Jul 25 [cited 2021 Jun 14];5(1):11–21. Available from:
514 <http://dx.doi.org/10.2147/AABC.S30620>
- 515 22. Vengesai A, Kasambala M, Mutandadzi H, Mduluzaid TL, Mduluzaid T,
516 Naicker T, et al. Scoping review of the applications of peptide microarrays on the fight
517 against human infections. PLoS One [Internet]. 2022 Jan [cited 2022 Feb
518 13];17(1):e0248666. Available from:
519 <https://journals.plos.org/plosone/article?id=10.1371/journal.pone.0248666>
- 520 23. Sanchez-Lockhart M, Reyes DS, Gonzalez JC, Garcia KY, Villa EC, Pfeffer BP, et al.
521 Qualitative Profiling of the Humoral Immune Response Elicited by rVSV-ΔG-EBOV-
522 GP Using a Systems Serology Assay, Domain Programmable Arrays. Cell Rep
523 [Internet]. 2018 Jul 24 [cited 2020 Nov 26];24(4):1050-1059.e5. Available from:

- 524 <https://doi.org/10.1016/j.celrep.2018.06.077>
- 525 24. Sanchez-Trincado JL, Gomez-Perosanz M, Reche PA. Fundamentals and Methods for
526 T- and B-Cell Epitope Prediction [Internet]. Vol. 2017, Journal of Immunology
527 Research. Hindawi Limited; 2017 [cited 2021 Jan 14]. Available from:
528 <https://pubmed.ncbi.nlm.nih.gov/29445754/>
- 529 25. Vengesai A, Muleya V, Midzi H, Tinago TV, Chipako I, Manuwa M, et al. Diagnostic
530 performances of *Schistosoma haematobium* and *Schistosoma mansoni* recombinant
531 proteins, peptides and chimeric proteins antibody based tests. Systematic scoping
532 review. PLoS One. 2023 Mar 1;18(3 March).
- 533 26. Vengesai A, Naicker T, Midzi H, Kasambala M, Mduluza-Jokonya TL, Rusakaniko S,
534 et al. Multiplex peptide microarray profiling of antibody reactivity against neglected
535 tropical diseases derived B-cell epitopes for serodiagnosis in Zimbabwe. PLoS One
536 [Internet]. 2022 Jul 1 [cited 2023 Jan 31];17(7):e0271916. Available from:
537 <https://journals.plos.org/plosone/article?id=10.1371/journal.pone.0271916>
- 538 27. Vengesai A, Naicker T, Midzi H, Kasambala M, Muleya V, Chipako I, et al. Peptide
539 microarray analysis of in-silico predicted B-cell epitopes in SARS-CoV-2 sero-positive
540 healthcare workers in Bulawayo, Zimbabwe. Acta Trop [Internet]. 2023 Feb 1 [cited
541 2023 Jan 31];238:106781. Available from:
542 <https://linkinghub.elsevier.com/retrieve/pii/S0001706X22004727>
- 543 28. Tanigawa C, Fujii Y, Miura M, Nzou SM, Mwangi AW, Nagi S, et al. Species-Specific
544 Serological Detection for Schistosomiasis by Serine Protease Inhibitor (SERPIN) in
545 Multiplex Assay. PLoS Negl Trop Dis [Internet]. 2015 [cited 2020 May
546 20];9(8):e0004021. Available from:
547 <https://journals.plos.org/plosntds/article?id=10.1371/journal.pntd.0004021>
- 548 29. Colley DG, King CH, Kittur N, Ramzy RMR, Secor WE, Fredericks-James M, et al.
549 Evaluation, Validation, and Recognition of the Point-of-Care Circulating Cathodic
550 Antigen, Urine-Based Assay for Mapping *Schistosoma mansoni* Infections. Am J Trop
551 Med Hyg [Internet]. 2020 May 12 [cited 2023 Dec 4];103(1_Suppl):42–9. Available
552 from: https://www.ajtmh.org/view/journals/tpmd/103/1_Suppl/article-p42.xml
- 553 30. Archer J, Barksby R, Pennance T, Rostron P, Bakar F, Knopp S, et al. Analytical and
554 Clinical Assessment of a Portable, Isothermal Recombinase Polymerase Amplification
555 (RPA) Assay for the Molecular Diagnosis of Urogenital Schistosomiasis. Mol 2020, Vol
556 25, Page 4175 [Internet]. 2020 Sep 11 [cited 2023 Dec 4];25(18):4175. Available from:
557 <https://www.mdpi.com/1420-3049/25/18/4175/htm>
- 558 31. Pearson MS, Tedla BA, Mekonnen GG, Proietti C, Becker L, Nakajima R, et al.
559 Immunomics-guided discovery of serum and urine antibodies for diagnosing urogenital
560 schistosomiasis: a biomarker identification study. The Lancet Microbe [Internet]. 2021
561 Nov 1 [cited 2022 Feb 14];2(11):e617–26. Available from:
562 <http://www.thelancet.com/article/S2666524721001506/fulltext>
- 563 32. Nausch N, Dawson EM, Midzi N, Mduluza T, Mutapi F, Doenhoff MJ. Field evaluation
564 of a new antibody-based diagnostic for *Schistosoma haematobium* and *S. mansoni* at the
565 point-of-care in northeast Zimbabwe. BMC Infect Dis [Internet]. 2014 Mar 26 [cited
566 2023 May 27];14(1):1–9. Available from:
567 <https://bmcinfectdis.biomedcentral.com/articles/10.1186/1471-2334-14-165>

- 568 33. Torlakovic EE, Francis G, Garratt J, Gilks B, Hyjek E, Ibrahim M, et al. Standardization
569 of negative controls in diagnostic immunohistochemistry: Recommendations from the
570 international Ad Hoc expert panel. *Appl Immunohistochem Mol Morphol* [Internet].
571 2014 [cited 2022 May 10];22(4):241–52. Available from:
572 [https://journals.lww.com/appliedimmunohist/Fulltext/2014/04000/Standardization_of_](https://journals.lww.com/appliedimmunohist/Fulltext/2014/04000/Standardization_of_Negative_Controls_in_Diagnostic.1.aspx)
573 [Negative_Controls_in_Diagnostic.1.aspx](https://journals.lww.com/appliedimmunohist/Fulltext/2014/04000/Standardization_of_Negative_Controls_in_Diagnostic.1.aspx)
- 574 34. West R, Kobokovich A. Understanding the Accuracy of Diagnostic and Serology Tests:
575 Sensitivity and Specificity Factsheet. 2020;
- 576 35. Diagnostic target product profiles for monitoring, evaluation and surveillance of
577 schistosomiasis control programmes [Internet]. [cited 2022 Jan 28]. Available from:
578 <https://www.who.int/publications/i/item/9789240031104>
- 579 36. Ogongo P. Identification and evaluation of *Schistosoma mansoni* proteins as diagnostic
580 targets for schistosomiasis. *Int J Infect Dis*. 2014 Apr 1;21:365.
- 581 37. Schistosomiasis [Internet]. [cited 2023 Dec 4]. Available from:
582 <https://www.who.int/news-room/fact-sheets/detail/schistosomiasis>
- 583 38. Rivera J, Mu Y, Gordon CA, Jones MK, Cheng G, Cai P. Current and upcoming point-
584 of-care diagnostics for schistosomiasis. *Trends Parasitol* [Internet]. 2023 Nov 23 [cited
585 2023 Dec 4]; Available from:
586 <https://linkinghub.elsevier.com/retrieve/pii/S1471492223002805>

587 **8 Supplementary files**

588 **S1 file**

589 Excel file

590 *S. haematobium* and *S. mansoni* demographics and parasitology and peptide microarray
591 immunoassay data sets.

592

593 **S2 file**

594 Excel file

595 *S. haematobium* and *S. mansoni* linear B-cell epitopes

596

597 **S3 file**

598 Word document

599 Receiver operating characteristics (ROC) curve and area under the ROC curve (AUC) for
600 discrimination of *S. mansoni* positives from healthy controls and *S. mansoni* negatives.

601

602 **S4 file**

603 Word document

604 Receiver operating characteristics (ROC) curve and area under the ROC curve (AUC) for
605 discrimination of *S. haematobium* positives from healthy controls and *S. haematobium*
606 negatives.

607

608

609

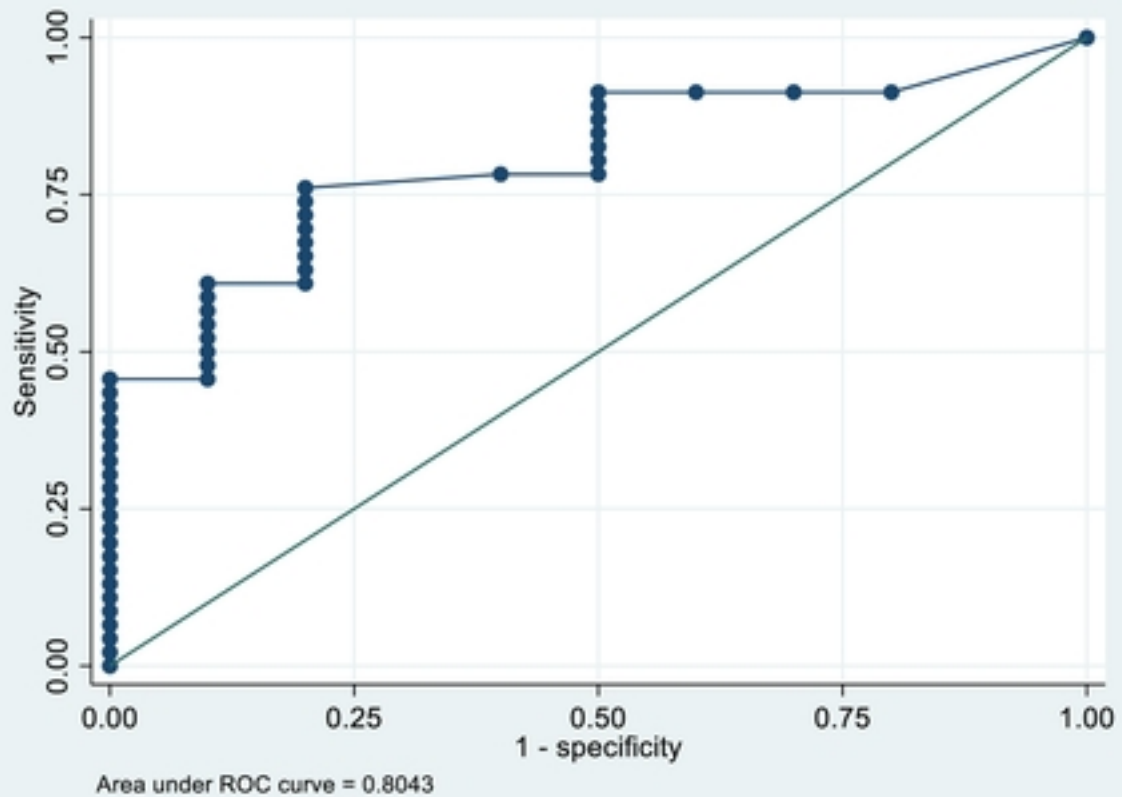
610

611

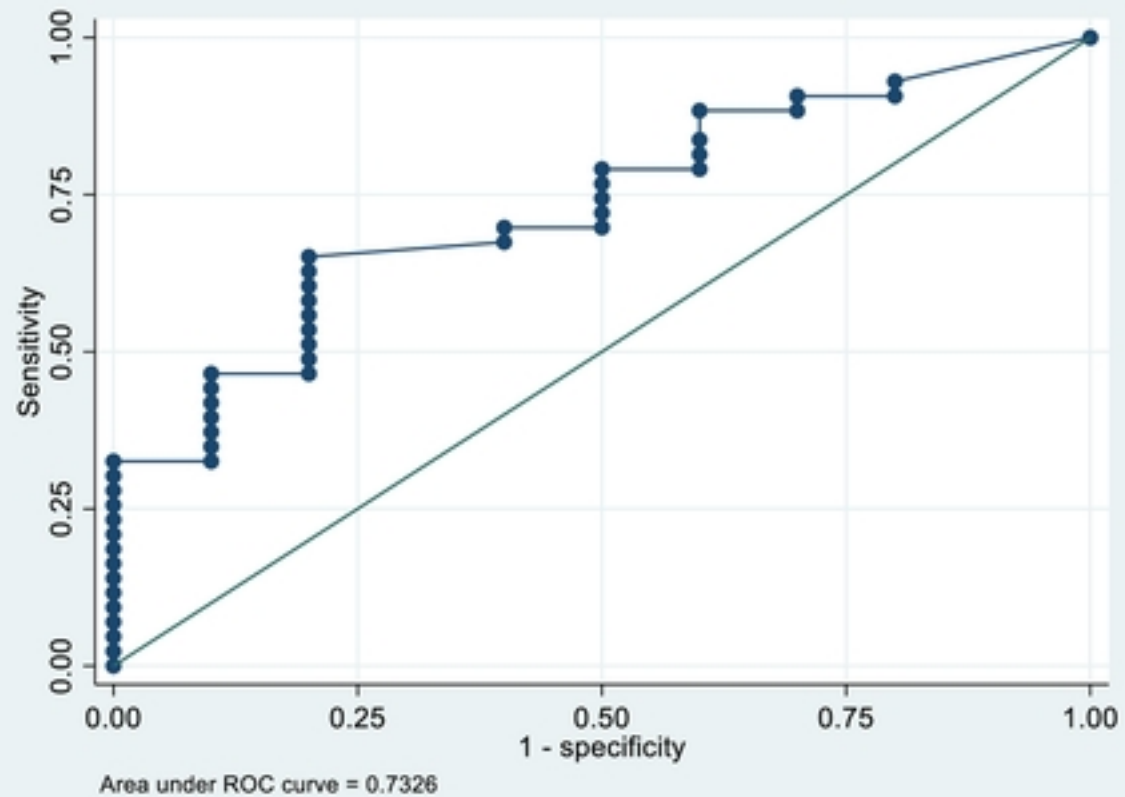
612

613

614

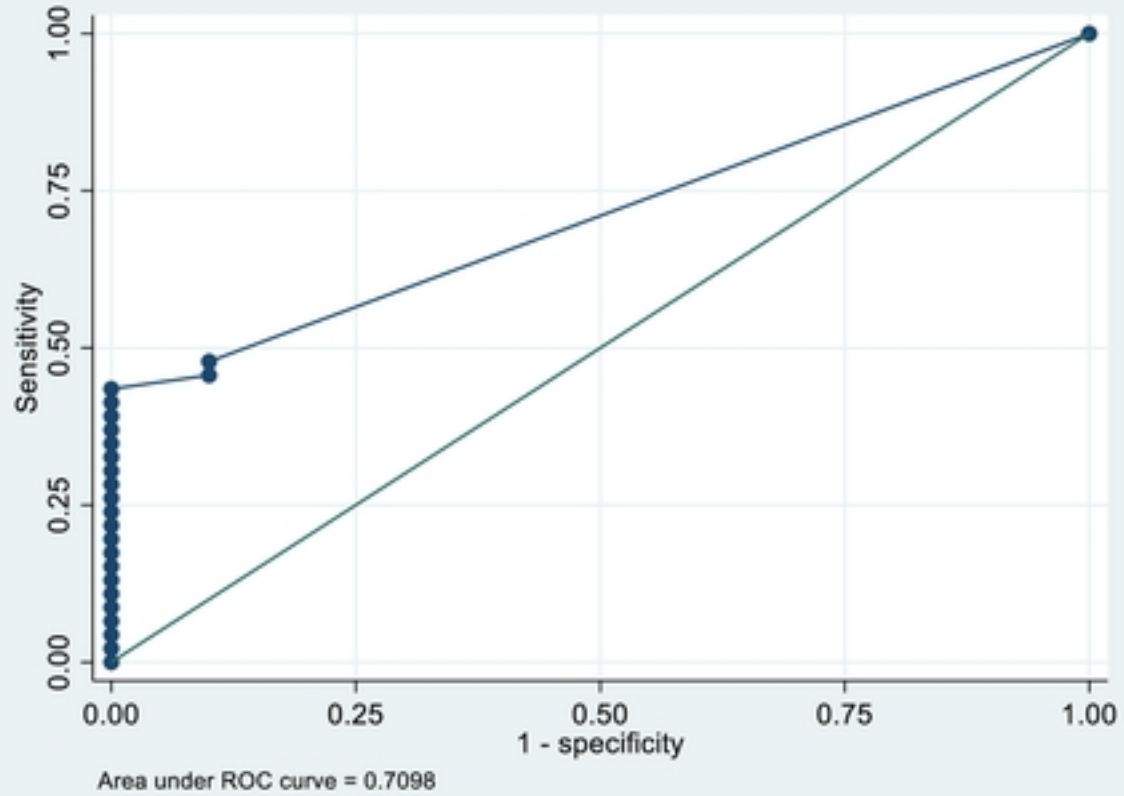


a.

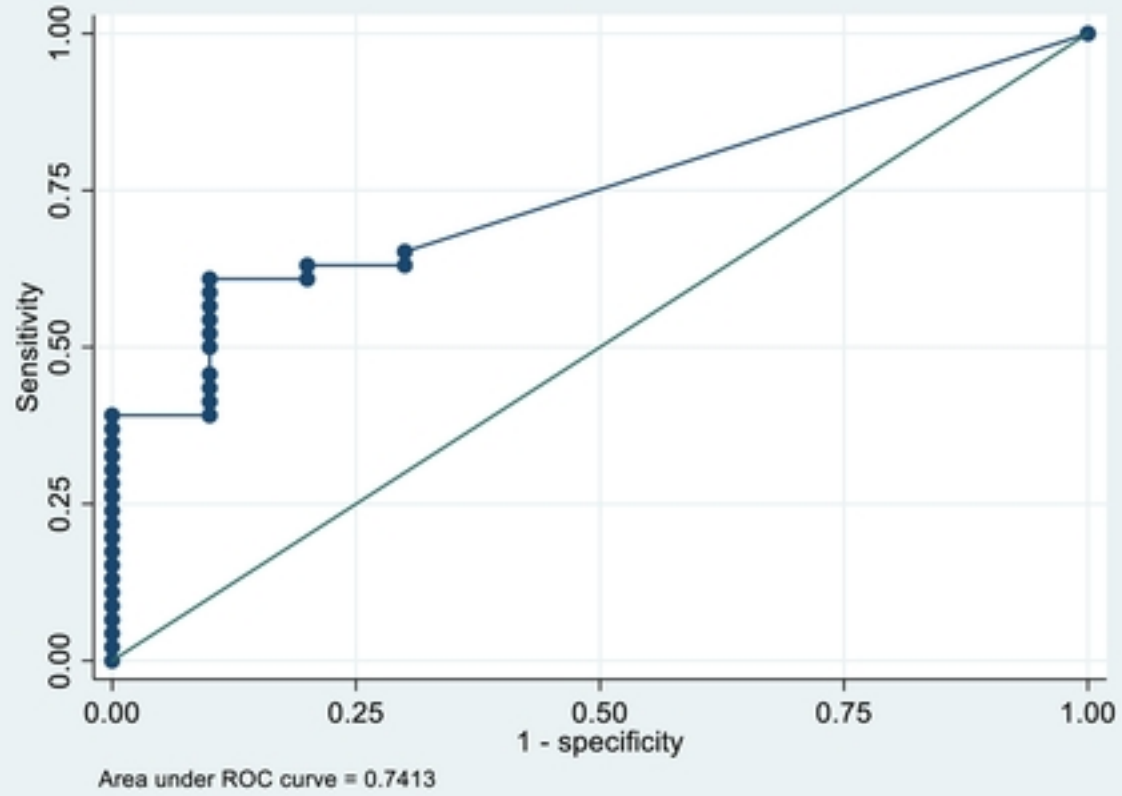


b.

Figure 1

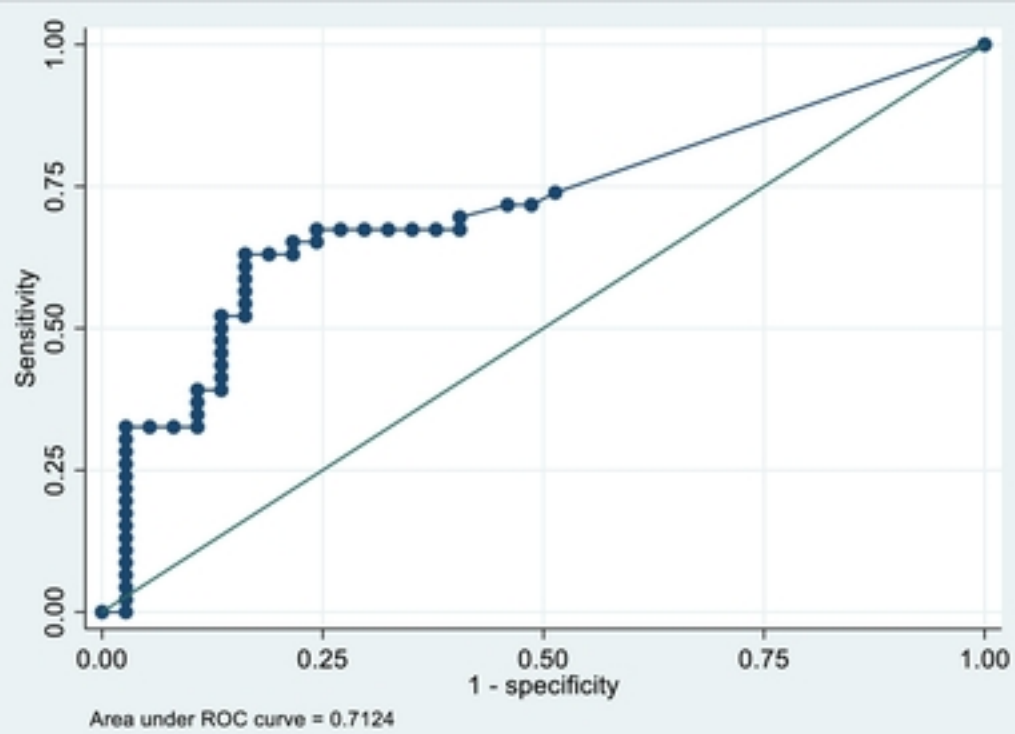


a.

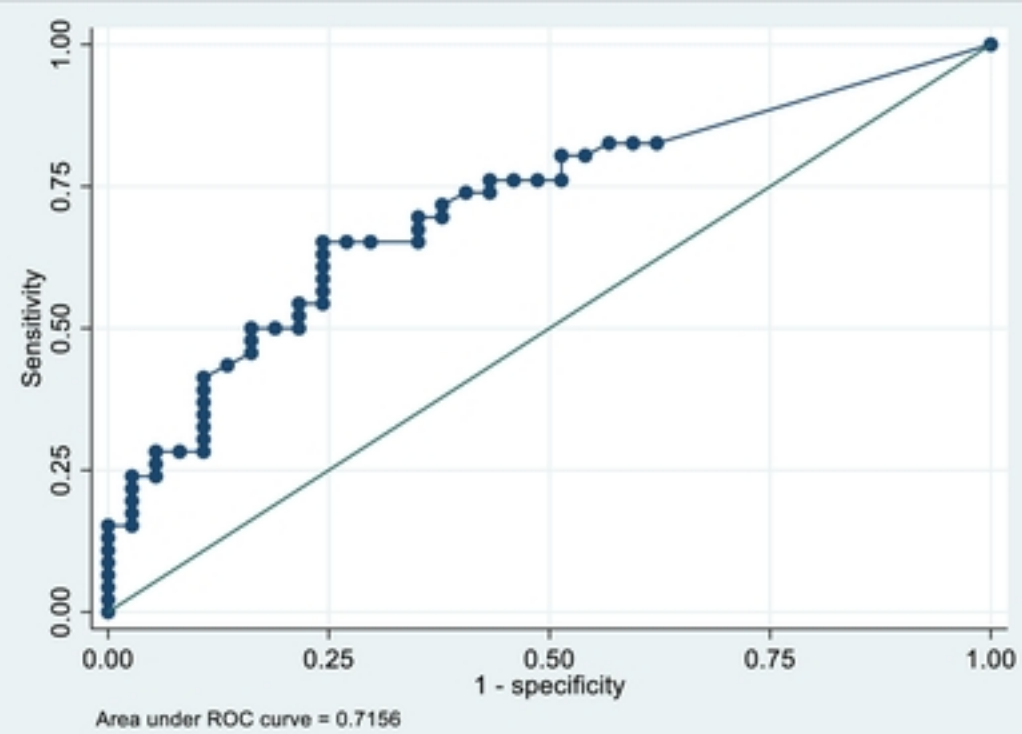


b.

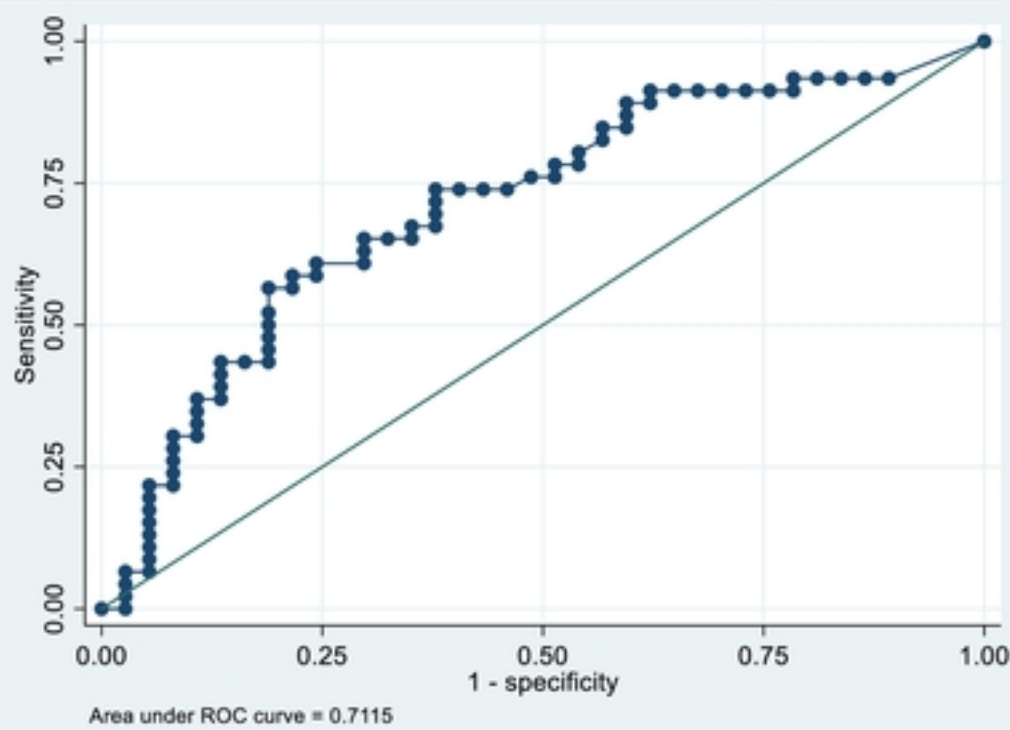
Figure 2



a

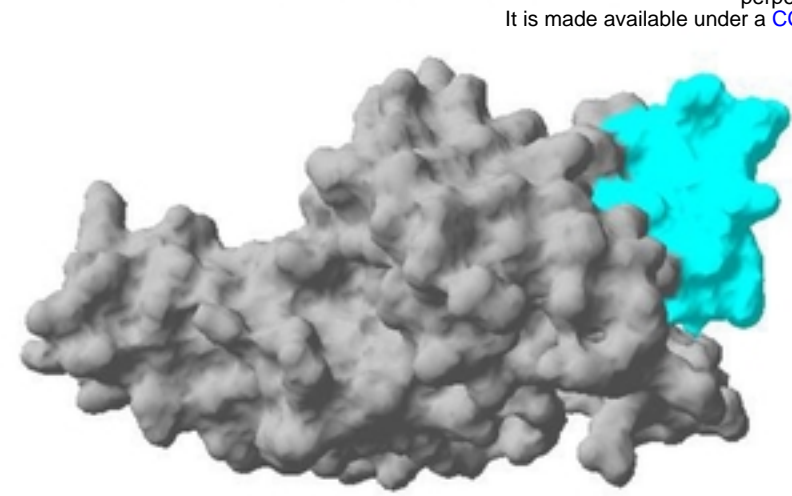


b

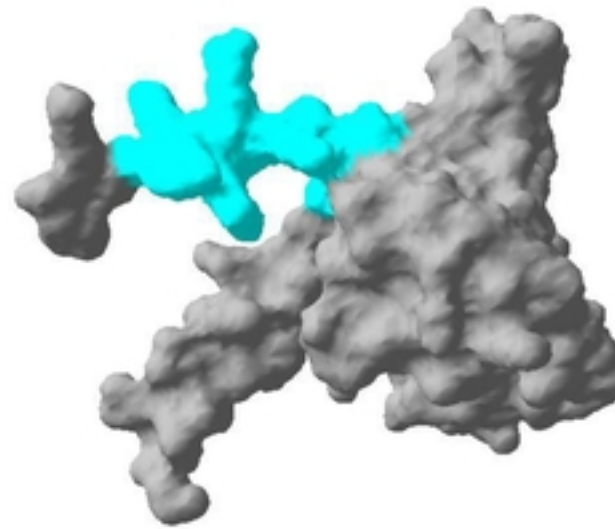


c

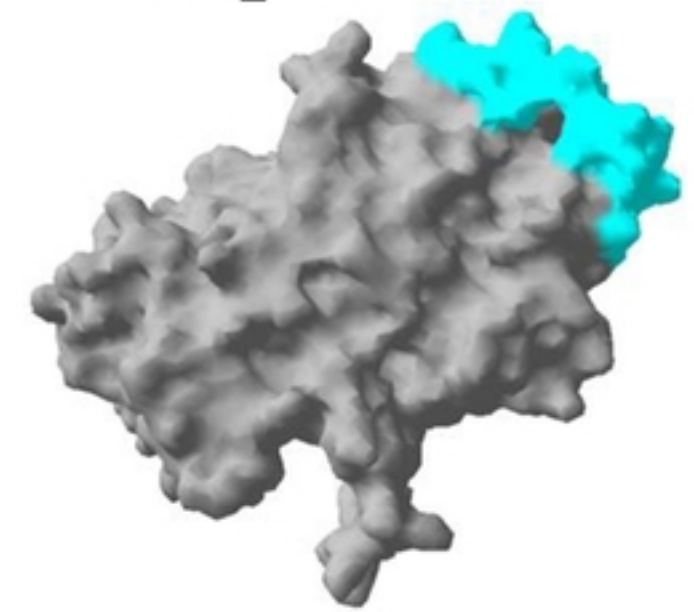
Figure 3



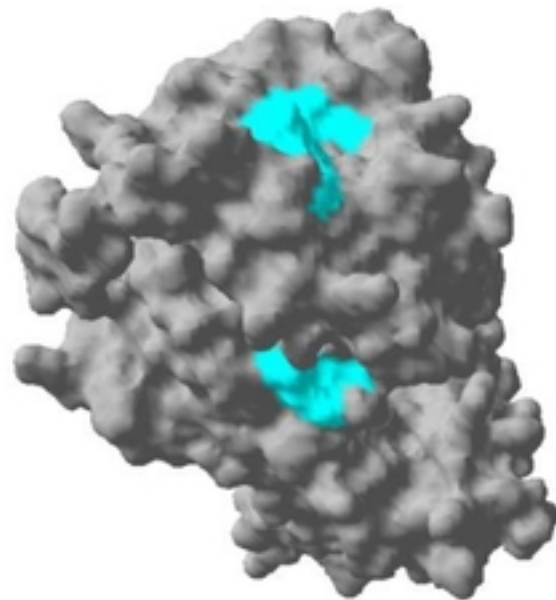
SmSPI-177-193



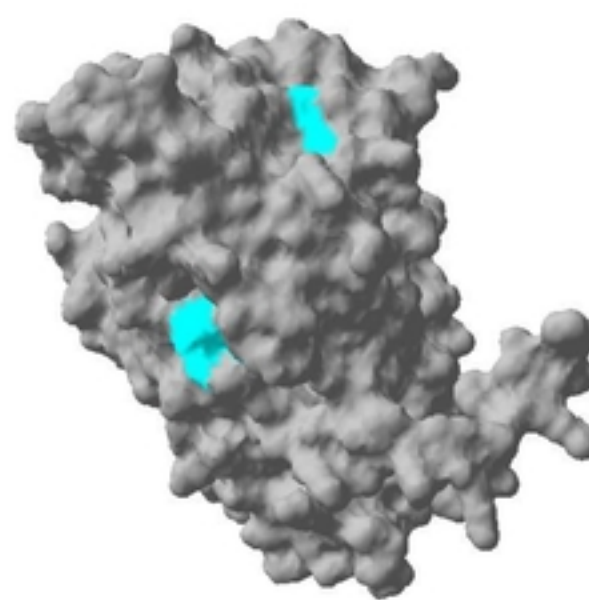
SmSPI-378-388



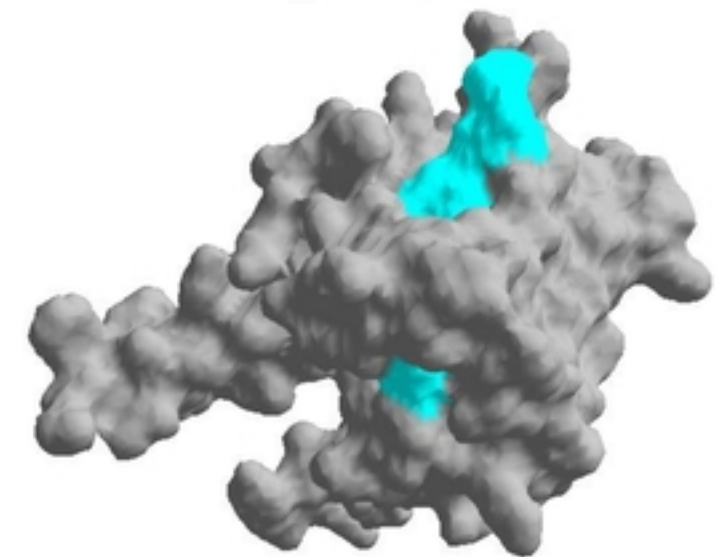
MS3_10186-40-49



SmSPI-197-214



SmSPI-359-372



MS3_10186-25-41

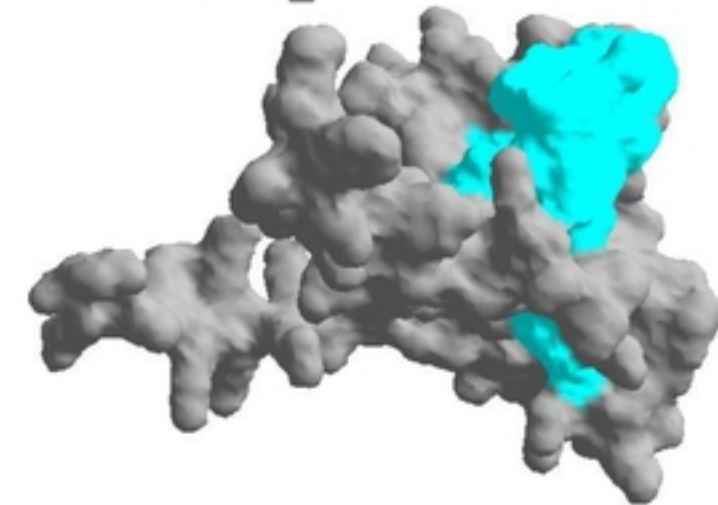
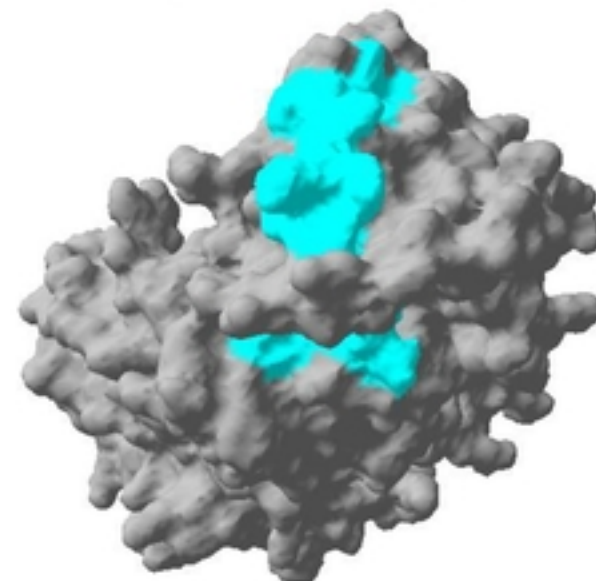
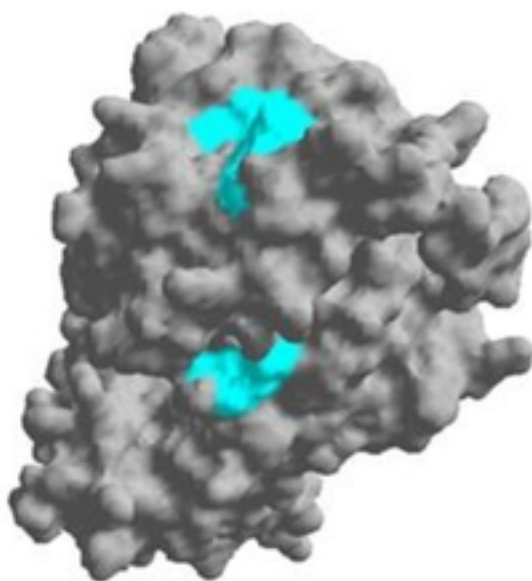


Figure 4