

The long-term effect of bariatric/metabolic surgery versus pharmacologic therapy in type 2 diabetes mellitus patients: A systematic review and meta-analysis

Yumeng Yang ¹, Chuhan Miao ¹⁺, Yingli Wang ³, Jianxun He ⁴, Yan Bo ^{*}
^{1,1+} The University of Hong Kong, Li Ka Shing Faculty of Medicine, Hong Kong SAR, China, yy_yym@163.com u3590608@connect.hku.hk
³ Shanghai Xuhui Central Hospital, Department of Rehabilitation Medicine, Shanghai, China, raineywong_0601@outlook.com
⁴ Gansu Provincial Maternity and Child Care Hospital, Department of Neurosurgery, Lanzhou, China, 13893321949@163.com
^{*} Northwest Minzu University, College of Medicine, Lanzhou, China, thoseformylovedpeople@outlook.com

Abstract

Background: Metabolic/bariatric surgery as a treatment for obesity and related diseases, such as type 2 diabetes mellitus (T2DM), has been increasingly recognized. However, the long-term effect (\geq five years) of metabolic surgery in T2D patients is still unclear compared with conventional pharmacologic therapy. This study aims to evaluate the diabetes remission rate, diabetic microvascular complications incidence, macrovascular complications incidence, and mortality in T2D patients who received metabolic surgery versus pharmacologic therapy more than five years after the surgery.

Methods: Searching the database, including PubMed, Embase, Web of Science, and Cochrane Library from the inception to recent (2022), for randomized clinical trials (RCTs) or cohort studies comparing T2D patients treated with metabolic surgery versus pharmacologic therapy reporting on the outcomes of the diabetes remission rate, diabetic microvascular complications, macrovascular complications, or mortality over five years or more.

Results: A total of 13 articles with a total of 68,280 patients with T2D were eligible for review and meta-analysis in this study. There is a significant long-term increase in diabetes remission for metabolic surgery compared with conventional medical therapy in the overall pooled estimation and RCT studies or cohort studies separately (overall: OR = 8.39, 95%CI: 3.58-19.67, $P < 0.001$). Significant long-term decreases showed in the pooled results of microvascular complications incidence (HR = 0.43, 95%CI: 0.37-0.49, $P < 0.001$), macrovascular complications incidence (HR = 0.60, 95%CI: 0.48-0.75, $P < 0.001$) and mortality (HR = 0.44, 95%CI: 0.37-0.49, $P < 0.001$).

Conclusion: Metabolic surgery showed more significant long-term effects than pharmacologic therapy on diabetes remission, macrovascular complications, microvascular complications incidence, and all-cause mortality in patients with T2D using currently available evidence. More high-quality evidence is needed to validate the long-term effects of metabolic surgery versus conventional treatment in the management of diabetes.

Keywords: type 2 diabetes mellites, metabolic surgery, bariatric surgery, pharmacologic therapy, conventional medical therapy, meta-analysis

LIST OF ABBREVIATIONS

95% CI	95% confidence interval
T2DM	Type 2 diabetes mellitus
T2D	Type 2 diabetes
RCT	Randomized clinical trial
AGB	Adjustable gastric band
ASCVD	Atherosclerotic cardiovascular disease
BMI	Body mass index
BPD	Biliopancreatic diversion
CHD	Coronary heart disease
DS	Duodenal switch
FPG	Fasting plasma glucose
GIP	Gastric inhibitory polypeptide
GB	Gastric bypass
GLP-1	Glucagon-like peptide 1
HR	Hazard ratio
HbA1c	hemoglobin A1c
LDL	low-density lipoprotein
LSG	Laparoscopic sleeve gastrectomy
MI	Myocardial infarction
NIH	National Institutes of Health
NGB	Non-adjustable gastric banding
OR	Odds ratio
RYGB	Roux-en-Y Gastric Bypass
RR	Relative risk
VBG	Vertical banded gastroplasty

1 Introduction

1.1 Background

As one of the fastest growing diseases in the world, the number of people with type 2 diabetes mellitus(T2DM) has exceeded 420 million(1) and accounts for 90% of adults' diabetes(2). It composes of a group of metabolic disorders due to hyperglycemia, that might lead to a series of chronic complications, both microvascular and macrovascular, which account for significant mortality in patients with T2D(3). The current standard of care for type 2 diabetes includes pharmacologic therapy(including medication and insulin therapy) and therapeutic lifestyle change(4). Yet the standard of care for type 2 diabetes is no cure for all T2D patients. Some studies have shown that the diabetes remission rate of those interventions is less than 15%(5, 6). And evidence has shown that medication and therapeutic lifestyle changes had no impact on diabetes complications incidence(2).

Meanwhile, other new treatments for type 2 diabetes such as weight loss medical devices and metabolic surgery continue to emerge(3). Especially, metabolic/bariatric surgery has been recognized as an effective treatment for obesity and its comorbidities, such as T2DM (7). In recent years, it has been found that bariatric surgery can not only achieve the effect of weight loss but also change the patient's physiological condition and glucose metabolism, thereby achieving the effect of diabetes remission(8). And studies have shown that metabolic surgery contributes to diabetes remission(9, 10), microvascular and macrovascular complications(11, 12), and mortality(11) in T2D patients.

However, some evidence has shown concerning conditions, that the diabetes remission rate is high in the short-term period after the surgery, but might relapse in the long term (13, 14). Moreover, previous studies also reported that metabolic surgery caused surgical-related morbidities in the short- and long-term(15). Short-term (perioperative) mortality and morbidity were rised due to bariatric surgery(16). Adverse events, such as anemia and hypoglycemic episodes, were

reported to be increased over a 5-year follow-up after the bariatric surgery (17). Moreover, the mechanisms by which metabolic surgery can stably improve the hyperglycemic metabolic status of patients with type 2 diabetes in the short- and long-term are still unclear(18). Therefore, the long-term effects (≥ 5 years) of diabetes remission, complications, and mortality in the T2D patients treated with metabolic surgery versus pharmacologic therapy remain unclear(19).

1.2 Objective

To compare the long-term effects of bariatric surgery and conventional medical therapy in patients with type 2 diabetes, this study systematically reviewed and evaluated the currently available data on multiple outcomes (diabetes remission, diabetic macrovascular complications, diabetic macrovascular complications, and all-cause mortality in T2D patients) of diabetes treatments.

This systematic review and meta-analysis aimed to collect and summarize the long-term effects of bariatric surgery versus medical treatment in patients with type 2 diabetes, and to provide evidence for improving the treatment of type 2 diabetes. To provide high-level evidence in the hierarchy of evidence of evidence-based medicine(20) and concrete evidence for organizations such as the American Diabetes Association (ADA), to improve the guidelines of diabetes treatment and provide better care for T2DM patients. Also provide evidence for policy makers' decision-making, such as which intervention campaign should be promoted in secondary and tertiary prevention of diabetes. This study could help understand the long-term effects of current treatments for type 2 diabetes and provide more insights into the optimal treatment of T2DM.

2 Materials and Methods

2.1 Search strategy and study selection

I conducted the systematic review and meta-analysis followed the guidelines of PRISMA (21). I searched the database including PubMed, Embase, Web of Science, and Cochrane Library from the inception of the databases to recent (2022). I searched

the database with the keywords: "Bariatric Surgery" or "Obesity surgery" or "Metabolic surgery" or "gastric bypass" or "gastric banding" or "gastric band" or "gastric sleeve" or "sleeve gastrectomy" or "duodenojejunal bypass" or "ileal interposition" or "biliopancreatic diversion" or "biliopancreatic diversion" and "diabetes mellitus" or "diabetes" or "T2DM" or "T2D", then restricted language to English, restricted study type to "randomized clinical trial" or "randomized controlled trial" or "cohort study" or "cohort", then excluded the studies with the key words "review" or "comment" or "letter" or "animal" or "rat" or "rats" or "mice". I included the randomized controlled trials (RCTs) or cohort studies with a comparison of bariatric surgery versus pharmacologic therapy that provided a baseline number of adult (> 18-year-old) patients with T2D and provided diabetes remission or other secondary outcomes at 5 or more years. I excluded the articles reported on type 1 diabetes patients, gestational diabetes patients, or the control group definition of not clear/not pharmacologic therapy.

2.2 Outcomes

The primary outcome is to compare the long-term diabetes remission rate in type 2 diabetes patients who received metabolic surgery versus pharmacologic therapy. The criteria of diabetes remission include a hemoglobin A1c (HbA1c) level < 6.5% and a fasting plasma glucose (FPG) level < 100–125 mg/dL without medicine, or the HbA1c level <6.0% with medicine, or other criteria defined by the articles.

The secondary outcomes are 1) long-term diabetic microvascular retinopathy, nephropathy, and neuropathy complications incidence(22), 2) long-term diabetic macrovascular complications incidence, including the coronary arteries, peripheral arteries, and cardiovascular disease, which includes atherosclerotic cardiovascular disease (ASCVD), heart failure, stroke, myocardial infarction (MI), angina pectoris, etc.(23, 24), and 3) long-term all-cause mortality in T2D patients with bariatric/metabolic surgery versus pharmacologic therapy.

2.3 Data extraction and quality assessment

The extracted information from the eligible articles includes the name of the first author, year of publication, country of origin, ethnicity of the targeted population, the surgery types of the bariatric surgery in the surgical group, the sample size, follow-up duration, estimation of the relative differences of incidence in outcomes between different treatment groups(odds ratios (ORs), or hazard ratios (HRs) and 95% confidence interval (95%CI)), and the baseline body mass index (BMI) and age.

The Downs and Black scores (25) were used to assess the quality of the studies, critical appraisal of the study design, the data collection, and the statistical analysis.

2.4 Statistical analysis

I estimated the pooled estimates from the eligible studies of the relative differences in incidence (ORs or HRs) in diabetes remission, diabetic macrovascular complications, diabetic microvascular complications, and all-cause mortality between metabolic surgery and pharmacologic therapy group. Subgroup analysis was performed for the outcomes in randomized controlled trials (RCTs) and cohort studies separately.

Heterogeneity was assessed by Cochran's Q-test and Higgins (I^2) statistics, at a significance level of $P = 0.1$. I constructed the forest plots to show the pooled results, using the fixed effects model (when heterogeneity is low, $P \geq 0.1$ and $I^2 \leq 50\%$) or the random effects model (when heterogeneity is high, $P < 0.1$ or $I^2 > 50\%$). The publication bias was assessed by the visual symmetry in funnel plots. The sensitivity analysis to examine and compensate for the publication bias was assessed by Egger's test and trim and fill analysis at a significance level of $P = 0.01$. The statistical analysis was performed using R version 4.1.2

3 Results

3.1 Study characteristics

The selection procedure of this meta-analysis was shown in Figure.1. In total, 4297 records were identified from the database through searching. After removal of the duplicate records ($n = 1370$), 2927 records were eligible to be screened by

title/abstract. After excluding 2881 articles by title/abstract, 46 articles were assessed for eligibility in full text. In the full-text screening, 33 articles were excluded. Among those, 9 of the articles reported on methodology only, 7 of the articles contained the same population as included ones, 6 of the articles were available for abstract only, and 11 of the articles had a control group that definition was not clear/not pharmacologic therapy. Finally, 13 articles were included in this review.

13 articles (Table 1) were eligible for review in this study, they were published between 2014 – 2021 and the studies were conducted in the US, Sweden, Taiwan, Italy, and Denmark. Of which, 2 were prospective cohort studies, 8 were retrospective cohorts and 3 are randomized controlled trials (RCTs). Surgery types of the surgical groups were various, and the Roux-en-Y Gastric Bypass (RYGB) remained the most common metabolic procedure in the US(26) and this study. In terms of the outcomes, 6 articles reported the diabetes remission rate for 5 years or longer in the surgery group verse the conventional therapy, of which 3 were cohort studies, and 3 are RCTs. 8 studies reported the secondary outcomes, including the long-term incidence in microvascular complications (n = 4), macrovascular complications (n = 5), and mortality (n = 4). A total of 68,280 participants were included, and 32,853 participants were in the surgical group, with follow-up durations between 5 to 15 years. Most of them(n = 9) recruited participants with body mass index (BMI) ≥ 35 kg/m² at baseline, adhering to the recommendations from the National Institutes of Health (NIH)(27). 3 of them contained participants with BMI < 35 kg/m² at baseline. In addition, those with baseline BMI < 35 kg/m² were Asian or mixed populations that contained Asians.

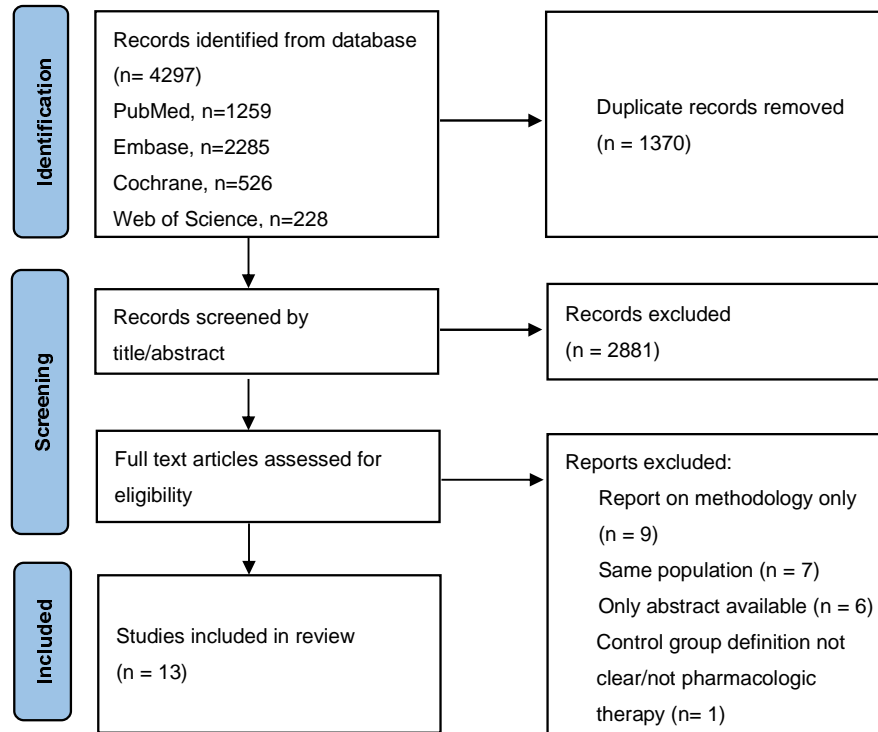


Figure.1 Flow-chart of study inclusion

Author, year	Countries	Ethnicity	Study design	Surgery types	Outcomes	Follow-up (years)	Sample size	BMI baseline (kg/m ²)	at	Age baseline (years)	at
Sjöström L, 2014(28)	Swedish	NA	Prospective cohort	AGB or NGB or VBG or GB	Diabetes remission, microvascular complications, macrovascular complications	15	603	40(C) 42.1(S)		50.4(C) 48.7(S)	
Hsu CC, 2015(29)	Taiwan	Asian	Retrospective cohort	LSG or GB	Diabetes remission	5	351	29.1(C), 31.0(S)		51.2(C) 44.2(S)	
Schauer PR, 2017(30)	US	Mixed	RCT	RYGB or LSG	Diabetes remission	5	150	36.4(C) 36.5 (S)		49.7(C) 48.1(S)	
Adams TD , 2017(31)	US	NA	Prospective cohort	RYGB	Diabetes remission	12	212	>=35(all)		-	
Ikramuddin S, 2018(32)	US and Taiwan	Mixed	RCT	GB	Diabetes remission	5	120	34.4(C) 34.9(S)		48(C) 49(S)	
Mingrone G, 2021(33)	Italy	NA	RCT	RYGB or BPD	Diabetes remission	10	60	>=35(all) 45.4(C) (S)	44.4	43.3(C), 43.3(S)	
Johnson, BL. MS , 2013(34)	US	Mixed	Retrospective cohort	RYGB or AGB or VBG or BPD or SG	Microvascular complications, macrovascular complications	5	15951	≥ 35(all)		52.1(C) 47.5(s)	
O'Brien R, 2018(35)	US	Mixed	Retrospective cohort	RYGB or SG or AGB	Microvascular complications	5	15083	43.8 (C) 44.9 (S)		48.7(C) 47.6(S)	
Madsen LR, 2019(36)	Danish	NA	Retrospective cohort	RYGB	Microvascular complications, macrovascular complications	5.3	2185	>35		47.1(C) 46.8(S)	
Fisher DP, 2018(37)	US	Mixed	Retrospective cohort	RYGB or SG or AGB	Macrovascular complications, mortality	5	20235	43.8(C) 44.7(S)		50.2(C) 49.5(S)	
Aminian A, 2019(38)	US	Mixed	Retrospective cohort	RYGB or SG or AGB or DS	Macrovascular complications, mortality	8	13722	42.6(C) 45.1(S)		54.8(C) 52.5(S)	
Pontiroli, A. E., 2016(39)	Italy	NA	Retrospective cohort	LAGB	Mortality	15	1066	> 35(all) 51.9(C) 49.9(S)		41.9(C) 43.0(S)	
Eliasson B, 2015(40)	Sweden	NA	Retrospective cohort	RYGB	Mortality	8	12264	41.4(C) 42.0(S)		50.5(C) 48.5(S)	

Table 1 Baseline characteristics for included studies

Biliopancreatic diversion (BPD), Roux-en-Y Gastric Bypass (RYGB), Laparoscopic sleeve, gastrectomy (LSG), gastric bypass (GB), adjustable gastric band (AGB), non-adjustable gastric banding (NGB), Vertical banded gastroplasty (VBG), Duodenal switch (DS), Control group (C), Surgical group (S)

3.2 Meta-analysis of long-term outcomes of metabolic surgery versus pharmacologic therapy

This review evaluated the long-term effects, including diabetes remission, microvascular complications, macrovascular complications, or mortality, of patients with type 2 diabetes in metabolic surgery and the conventional medical treatment groups.

3.2.1 Diabetes remission

Meta-analysis Result

The characteristics of the diabetes remission rate and patients are shown in Table 2, and figure 2A showed the overall pooled estimation(log-scale) and the data extracted from 6 studies(log-scale). All the included studies (n = 6) report a higher long-term diabetes remission rate in the surgical group than the medical treatment group, and most of them (n = 5) had a significant result. The overall pooled estimation (Table 3) showed a significant increase in diabetes remission of the metabolic surgery compared with conventional medical therapy (OR = 8.39, 95%CI: 3.58-19.67, $P < 0.001$). In the subgroup analysis, the pooled estimate showed a significant higher remission rate of the metabolic surgery in the RCT studies (OR = 4.02, 95%CI: 1.80-8.96, $P = 0.001$) (Table 3) and in the cohort studies (OR = 13.62, 95%CI: 3.95-46.99, $P < 0.001$) (Table 3) respectively. The advantage of diabetes remission rate in the surgical group compared with the medical treatment group of T2D patients in the RCT was smaller than the pooled diabetes remission rate advantage in the cohort studies, which might due to the small number size in the RCT studies (n = 3) and cohort studies (n = 3), or other known bias in the cohort studies.

Heterogeneity analysis

The heterogeneity of outcomes in the eligible studies with diabetes remission was between 0 to 64.25% (table 3). Significant heterogeneity was found in the diabetes remission rate between the surgical group and the medical treatment group in overall

results (I^2 (%) = 55.59, P_Q = 0.047). After stratified by the study types, the heterogeneity was still significant and in the cohort studies results (I^2 (%) = 64.25, P_Q = 0.057), but not significant in the RCT studies results (I^2 (%) = 0, P_Q = 0.613). Therefore, I used a random-effects model to estimate the pooled estimations in overall estimations of diabetes remission; and the fixed-effects models were applied for the diabetes remission rate in the cohort studies. The high heterogeneity in the overall estimation, might be due to the different pooled results in the different types of studies, the follow-up period was not the same, or the diagnostic criteria and definitions of diabetes remission included in this study were various.

Publication bias and sensitivity analysis

The publication bias of reported diabetes remission in the eligible studies was assessed by Egger's regression test (Table 3) and the funnel plots (Figure 3A-C). The funnel plots illustrated no obvious asymmetry in all over diabetes remission or in RCT studies or cohort studies respectively. There was no significant publication bias found in diabetes remission rate (overall: P_{Egger} = 0.373; RCTs, P_{Egger} = 0.384; or cohorts P_{Egger} = 0.894) indicators. Therefore, the trim and fill analyses were not necessary for the above analyses. But funnel plots were suggested to be used to assess the publication bias of the meta-analysis contained more than 10 studies(41), neither the overall estimation (n = 6) nor the subgroup (RCT: n = 3, cohort: n = 3) were eligible for the criteria. Therefore, the potential publication bias was still possible existed and not able to be assessed in this study.

3.2.2 Microvascular complications

Meta-analysis Result

Diabetic microvascular included in this study was composed of neuropathy, nephropathy, and retinopathy microvascular complications (22). Diabetic retinopathy is caused by hyperglycemia that damages the retina and can lead to blindness(22). Diabetic nephropathy includes peripheral neuropathy and cardiac autonomic

neuropathy and their incidence is closely related to glycemic control(42). Diabetic chronic kidney disease can cause albuminuria or other manifestations of kidney damage(43). All the included studies (n = 4) reported a long-term protective effect of the diabetic microvascular complications received surgery than the medical treatment group, and most of them (n = 3) had a significant result. The pooled estimations of the microvascular complications of the surgery compared with the medical treatment were illustrated in Table 3, Figure 2B. There was a significant decrease in the microvascular complication incidence (n = 4) in T2D patients who received bariatric surgery compared with the medical therapy (HR = 0.43, 95%CI: 0.37-0.49, $P < 0.001$). The detailed results and participants' characteristics of studies with the outcome of the long-term microvascular complications incidence were shown in Appendix 1.

Heterogeneity analysis

The heterogeneity of outcomes in the eligible studies with microvascular complications was 29.42 (Table 3). The incidence of macrovascular complications (I^2 (%) = 29.42, $P_Q = 0.236$) in T2D patients in the eligible studies the did not show significant heterogeneity. Therefore, the fixed-effects model was performed to estimate the pooled estimations on microvascular complications incidence.

Publication bias and sensitivity analysis

The publication bias reported on the long-term microvascular complications incidence in the eligible studies was assessed by Egger's regression test (Table 3) and the funnel plots (figure 3D). There was no significant publication bias found in microvascular complications ($P_{Egger} = 0.309$) indicators. Therefore, the trim and fill analyses were not necessary. Yet the sample size of eligible studies that reported the long-term microvascular complications in this meta-analysis is small (n = 4) and less than the recommended number (n = 10)(41) for the funnel plot to assess the publication bias. The potential publication bias was still possible existed and not able to be assessed in this meta-analysis.

3.2.3 Macrovascular complications

Meta-analysis Result

The macrovascular complications of diabetes - coronary heart disease (CHD), such as cerebrovascular disease, and atherosclerotic peripheral arterial disease, are one of the most dangerous complications that largely increase the risk of death in patients with type 2 diabetes(44). All the included studies (n = 5) reported a significant long-term protective effect of the diabetic macrovascular complications in people who received metabolic surgery than in the medical treatment group. The pooled estimations of the macrovascular complications of metabolic surgery compared with conventional medical therapy were illustrated in table 3, figure 2C. There was a significant decrease in the incidence of macrovascular complications (n = 4) in T2D patients who received metabolic surgery compared with conventional medical therapy (HR = 0.60, 95%CI: 0.48-0.75, $P < 0.001$). The detailed results and participants' characteristics of studies with the outcome of the long-term macrovascular complications incidence were shown in Appendix 1.

Heterogeneity analysis

The heterogeneity of outcomes in the eligible studies with macrovascular complications was 13.02 (Table 3). The incidence of macrovascular complications (I^2 (%) = 13.02, $P_Q = 0.011$) in T2D patients in the eligible studies the showed significant heterogeneity. Therefore, the random-effects model was performed to estimate the pooled estimations on macrovascular complications incidence. The high heterogeneity of outcomes in macrovascular complications incidence might be due to the different types of macrovascular complications demonstrated by the included studies. But unfortunately, this study was unable to distinguish the specific complications.

Publication bias and sensitivity analysis

The publication bias reported on the long-term macrovascular complication incidence in the eligible studies was assessed by Egger's regression test (Table 3) and the funnel plots (Figure 3E). There was no significant publication bias found in macrovascular complications ($P_{Egger} = 0.835$) indicators. Therefore, the trim and fill analyses were not necessary. But the number of eligible studies of the incidence of macrovascular complications ($n = 4$) included in this meta-analysis was less than the recommended number ($n = 10$)(41) for the funnel plot to assess the publication bias. The potential publication bias was still possible existed and not able to be assessed in this meta-analysis.

Mortality

Mortality in T2D patients is mainly caused by cardiovascular disease, followed by malignancy and cerebrovascular disease(45). And chronic complications, especially nephropathy, the survival of T2D patients has been prolonged(46). In this meta-analysis, all the included studies ($n = 5$) reported a significant decrease in the results of all-cause mortality in patients who received metabolic surgery than in the medical treatment group for a 5-year or more period. The pooled estimations of the mortality of the surgery compared with the medical therapy were illustrated in Table 3, Figure 2D. There was a significant protective effect against death in T2D patients who received bariatric surgery compared with the medical therapy (HR = 0.44, 95%CI: 0.37-0.49, $P < 0.001$). The detailed results and participants' characteristics of studies with the outcome of the long-term all-cause mortality were shown in Appendix 1.

Heterogeneity analysis

The heterogeneity of outcomes in the eligible studies reporting on long-term mortality was 13.02 (Table 3). The long-term mortality (I^2 (%) = 60.28, $P_Q = 0.056$) in T2D patients in the eligible studies the showed significant heterogeneity. Therefore, I performed the random-effects model to estimate the pooled estimations of mortality of

patients with type 2 diabetes. The high heterogeneity of outcomes in mortality might be due to the different types of metabolic surgery having different mortality in the short- and long-term(47). But unfortunately, this study was unable to distinguish the specific surgical types.

Publication bias and sensitivity analysis

The publication bias reported on the long-term mortality in the eligible studies was assessed by Egger's regression test (Table 3) and the funnel plots (Figure 3F). There was no significant publication bias found in mortality ($P_{Egger} = 0.067$) indicators. Therefore, the trim and fill analyses were not necessary. Yet the sample size of eligible studies reported that long-term mortality in this meta-analysis is small ($n = 4$) and less than the recommended number ($n = 10$)(41) for the funnel plot to assess the publication bias. The potential publication bias was still possible existed and not able to be assessed in this meta-analysis.

Author, year, Study design	Diabetes remission		Odds Ratio of diabetes remission
	Surgical group	Control group	
Sjöström L, 2014, cohort	35 of 115	4 of 62	6.3(2.1,18.9)
Hsu CC, 2015, cohort	18 of 50	3 of 250	46.31(12.92,165.99)
Adams TD, 2017, cohort	43 of 84	5 of 52	8.9(2.0,40.0)
Schauer PR, 2017, RCT	36 of 96	6 of 38	3.2(1.22,8.40)
Ikramuddin S, 2018, RCT	11 of 66	3 of 31	4.62(0.64,33.13)
Mingrone G, 2021, RCT	15 of 40	1 of 18	10.2(1.23,84.63)

Table 2 Summary table of the diabetes remission rate in the included studies

Outcomes	Studies Number	OR		Heterogeneity		Model	Publication bias P_{Egger}	Trill and fill ORs
		OR (95% CI)	POR	I^2 (%)	P_Q			
Diabetes remission								
Overall	6	8.39(3.58,19.67)	<.001	55.59	0.047	RE	0.373	Not necessary
RCTs	3	4.02(1.80, 8.96)	0.001	0	0.613	FE	0.384	Not necessary
Cohorts	3	13.62(3.95,46.99)	<.001	64.25	0.057	RE	0.894	Not necessary
Microvascular complications	4	0.43(0.37, 0.49)	<.001	29.42	0.236	FE	0.309	Not necessary
Macrovascular complications	5	0.60(0.48, 0.75)	<.001	13.02	0.011	RE	0.835	Not necessary
Mortality	4	0.44(0.33, 0.60)	<.001	60.28	0.056	RE	0.067	Not necessary

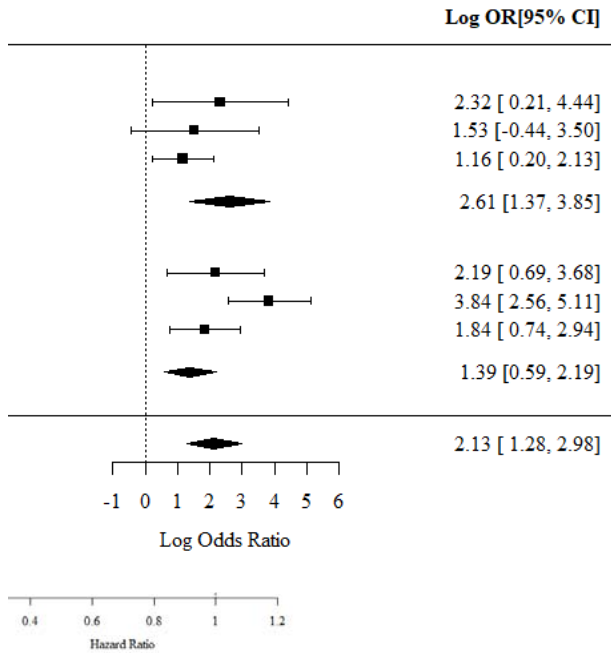
Table 3 Overall meta-analysis of the outcomes in T2DM patients who received metabolic surgery compared with conventional therapy

Model: Meta-analysis models; RE: Random-effects model; FE: Fixed-effects model; P_Q : Cochran's Q test's P -value; POR : OR test's P -value; P_{Egger} : Egger's test's P -value; Trill and fill ORs: trim and fill analysis to generate the refined ORs

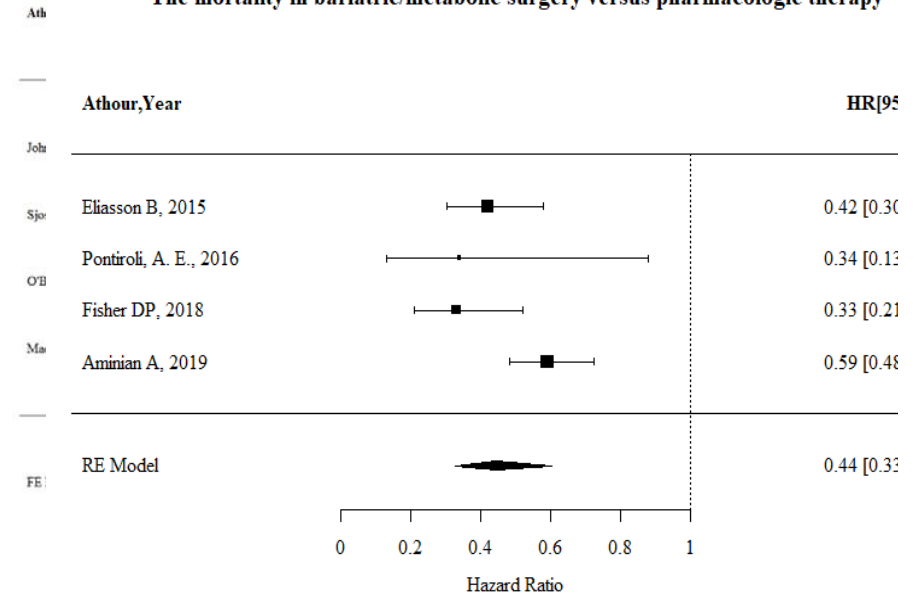
B

The cumulative incidence rates of microvascular complications in bariatric/metabolic surgery versus pharmacologic therapy

tric/metabolic surgery versus pharmacologic therapy



The mortality in bariatric/metabolic surgery versus pharmacologic therapy



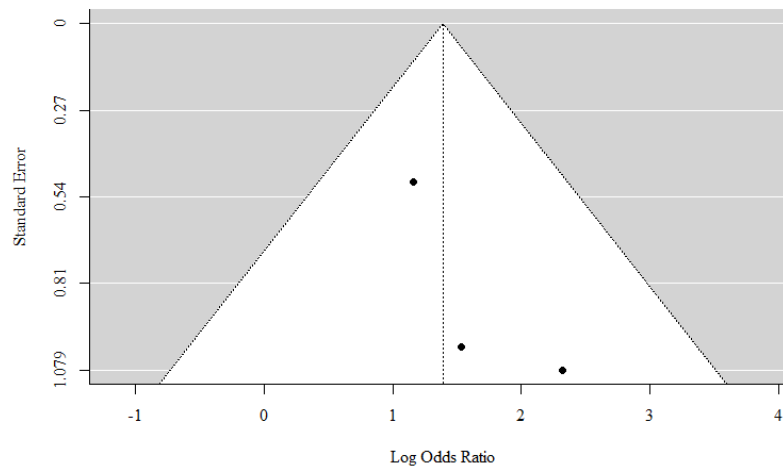
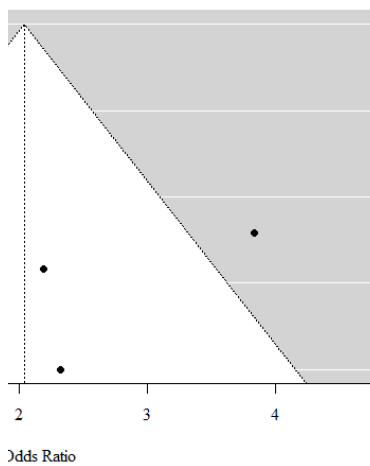
g-term diabetes remission rate in bariatric/metabolic surgery versus pharmacologic therapy pooled log ORs with subgroup str
 d HRs for microvascular complications(B), pooled HRs for macrovascular complications(C), pooled HRs for mortality(D)

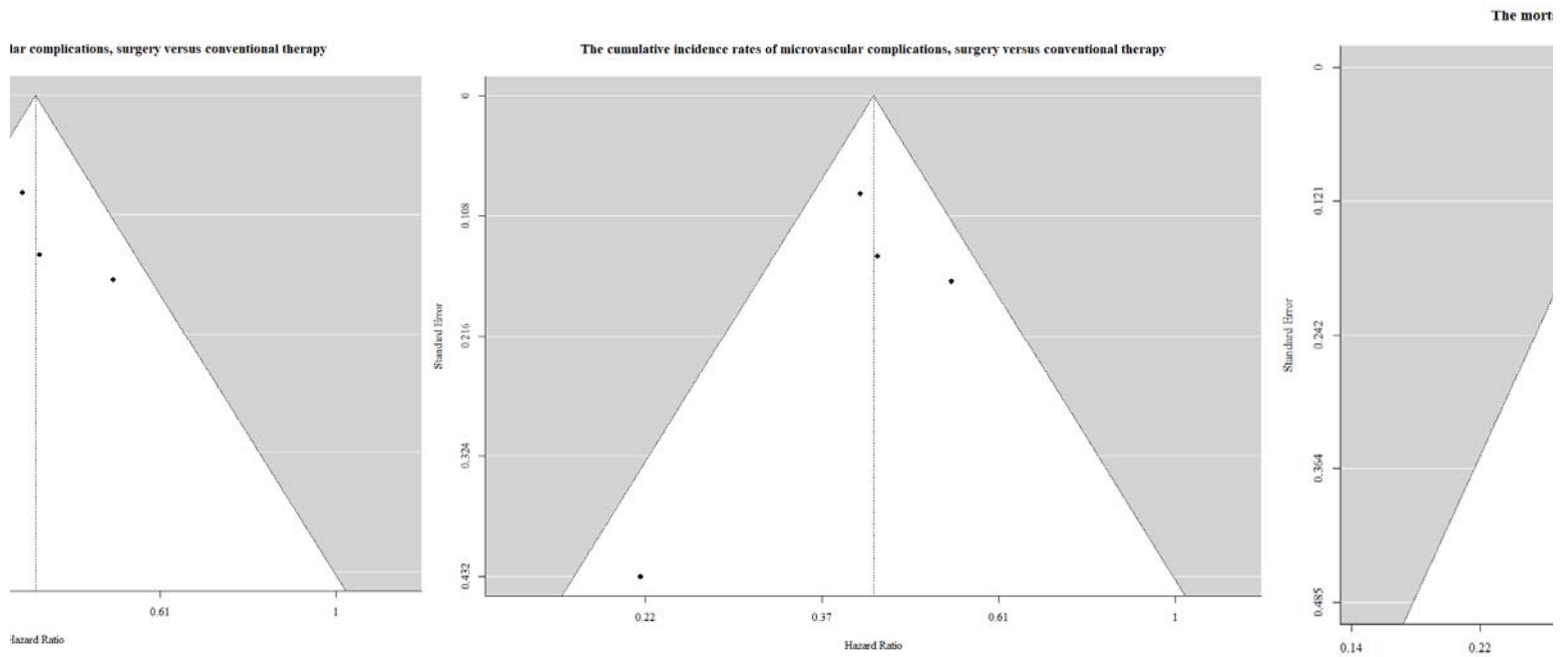
B

C

urgery versus conventional therapy

The diabetes remissions rates in RCTs, surgery versus conventional therapy





E

F

el plots to check publication bias, (A)Funnel plot for diabetes remissions rate in overall studies. (B)Funnel plot for diabetes rer
(C)Funnel plot for diabetes remissions rate in Cohort studies. (D)Funnel plot for microvascular complications. (E)Funnel plot fc
(E)Funnel plot for mortality.

4 Discussion

This study examined the long-term effects of bariatric/metabolic surgery compared with pharmacologic therapy in patients with type 2 diabetes. The meta-analyses were performed to assess the long-term incidence of differences in diabetes remission, diabetic macrovascular complications incidence, microvascular complications incidence, and all-cause mortality between metabolic surgery and pharmacologic therapy. Overall, the long-term effects of metabolic surgery were greater than the effects of the pharmacologic therapy in T2D patients. And in the subgroup analysis of the diabetes remission in RCTs and cohort studies respectively, diabetes remission was still significantly higher in people who received surgery in both groups. These results were concluded from the 68,280 participants from large-scaled prospective cohorts and RCTs with a follow-up period of 5 years or more.

4.1 diabetes remission

The significant long-term increases in diabetes remission for metabolic surgery compared with conventional medical therapy were reported by several previous studies. It is shown that metabolic surgery is associated with a 6-7 times higher diabetes remission rate in the long-term compared with conventional treatment(6, 48). And my study found that the diabetes remission rate of bariatric surgery is 8.39 times (OR: 8.39, 95%CI = 3.58-19.67) higher than the conventional medical treatment, although the pooled advantage in the RCT (OR: 4.02, 95%CI = 1.80-8.96) was smaller than the pooled diabetes remission rate advantage in the cohort study (OR: 13.62, 95%CI = 3.95-46.99), which might due to the small number size in the RCT studies or unknown bias in the cohort studies. A meta-analysis of 10 studies with more than 5 years of follow-up reported that the long-term diabetes remission rate in the surgical group was 5.9 times higher than in the conventional care group(RR, 95% CI =3.75-9.27)(6), but the study contained only one RCT. Another meta-analysis of 7 RCTs(49) reported a 10-fold better diabetes remission rate of surgery than medical therapy, on a follow-up basis for at least 2 years. The study also reported that the pooled diabetes remission rate at 2 years after bariatric surgery (52.5%) was greater than the 5-year outcome (27.5%) but higher than the diabetes remission rate in the medical treatment group (3.5%-3.8%). In addition, another study with six years of follow-up also showed that the rate of diabetes remission from bariatric surgery peaked at 2 years after surgery, and relapsed (19%) after 3 years(50). However, there was another meta-analysis(51) (including 8 RCTs) that indicated no difference between the glycemic control of 1-2 years or more than 3 years after the surgery in the participants received surgery. All studies have shown that diabetes remission

rates in the surgical group are significantly better in both the short- and long-term than in medical therapy, although relapses may occur.

In recent years, the effects of metabolic surgery in improving obesity-related metabolic diseases, such as type 2 diabetes mellitus and hyperlipidemia have become increasingly recognized(52). Bariatric surgery can effectively improve hyperglycemia and glucose homeostasis, those improvements were shown to be positively associated with BMI or weight loss(53). But the mechanism may not entirely account for the reductions in body weight and BMI. Studies have pointed out that the significant improvements in hyperglycemia in patients with type 2 diabetes after surgery usually occur within a short period when there was no significant change in BMI(54). Bariatric surgery might change hormone secretion by blocking or restricting the physiological structure of the gastrointestinal tract(55), thereby increasing orexin such as ghrelin, secreted by the stomach fundus(56), or glucagon-like peptide 1(GLP-1), oxyntomodulin and other hindgut hormones(57) to stimulate the gastrointestinal tract and accelerate the transporting of food. Through those enzymes, metabolic surgery can regulate energy and glucose metabolism. Yet another meta-analysis(18) showed that a series of hormones related to insulin sensitivity, including GLP-1, gastric inhibitory peptide (GIP), and ghrelin, did not have a significant effect on insulin resistance in T2DM patients who received metabolic surgery. Another possible mechanism of the metabolic improvement of surgery is the increased bile acid levels, which in turn increases fat absorption and cholesterol absorption, thereby indirectly achieving control of glucose metabolism(58). Improving long-term inflammatory status triggered by obesity is also a possible mechanism(59), with one study reporting detection of reduced inflammation markers and found that metabolic surgery improved metabolic disturbances in people with type 2 diabetes(60), thereby improving glycemic control. Alterations in the gut microbiota have also been proposed as a possible mechanism. Some studies showed RYGB increases gram-negative bacteria(60) of the gut microbiota and improves chronic inflammation over obesity(61).

4.2 microvascular complications

Diabetic microvascular was composed of neuropathy, nephropathy, and retinopathy microvascular complications (22). Diabetic retinopathy is closely related to diabetes onset durations and glycemic control(62). The cardiac autonomic neuropathy and peripheral neuropathy incidence are also closely related to glycemic control(42). Diabetic chronic kidney disease, which can cause albuminuria or other manifestations of kidney damage, occurs in one-fifth to half of people with type 2 diabetes(43). In this study, compared to the conventional treatment, metabolic surgery has a stronger

protective effect on microvascular complications in T2D patients (HR: 0.43, 95%CI = 0.37-0.49). A meta-analysis of 10 studies also reported that bariatric surgery reduced the incidence of microvascular complications (OR: 0.26, 95%CI = 0.16-0.42)(12). Another meta-analysis reported a similar result, that metabolic surgery reduced the incidence of microvascular complications in obese patients with T2D (OR: 0.34, 95% CI = 0.30–0.39)(63). Unfortunately, those studies mentioned above did not limit the years of follow-up in the included studies, so the long-term impact of metabolic surgery on diabetic complications of microvascular may remain to be assessed.

4.3 macrovascular complications

The macrovascular complications of diabetes - atherosclerotic cardiovascular diseases (ASCVD), such as cerebrovascular disease, atherosclerotic peripheral arterial disease, and coronary heart disease (CHD), are one of the most dangerous complications and one of the leading causes of death in T2D patients(44). Although there is evidence that medical therapy and intensive lifestyle intervention can improve cardiovascular risk factors(64, 65) including low-density lipoprotein (LDL), cholesterol, etc., the impact on cardiovascular outcomes(66, 67) is uncertain. In my study, metabolic surgery has a stronger protective effect on macrovascular complications in T2D patients than pharmacologic therapy (HR: 0.60, 95%CI = 0.48-0.75). This result is similar to a recently published meta-analysis(68), which showed surgery has a reduced effect on macrovascular complications incidence over 5 years in patients with type 2 diabetes (HR = 0.52, 95% CI = 0.39-0.71). Another meta-analysis(6) also showed that compared with the non-surgical group, the five-year macrovascular events rate was lower in the surgery group (RR = 0.52, 95% CI = 0.44-0.61). However, this study and the others above included results from observational studies and the number of included studies was small ($n \leq 9$). Therefore, the role of metabolic surgery on macrovascular outcomes in patients with type 2 diabetes remains to be assessed in high-quality evidence.

4.4 Mortality

The all-cause mortality in the T2DM patient over 5 years or longer period after the surgery is significantly decreased compared to the conventional treatment in this study (HR: 0.44, 95%CI = 0.33-0.60). Another meta-analysis also reported lower all-cause mortality in the subgroup of T2D patients who underwent metabolic surgery (HR: 0.41, 95% CI = 0.37–0.45)(69). However, the perioperative (≤ 30 days) mortality of metabolic surgery is not negligible. In a meta-analysis of 38 RCTs, short-term all-cause mortality in all patients who received metabolic surgery was 0.18% (95% CI, 0.04%-0.38%)(47). In the perioperative period, surgical complications such as anastomotic leakage, intestinal obstruction, and marginal ulcers have incidence rates

of 0.1% - 5%(16). Cardiopulmonary complications are rare but remain the main cause of perioperative mortality(17). Long-term adverse events, such as anemia and hypoglycemic episodes, also had a higher incidence in the surgical group(70).

4.5 limitations

Limitations of this study are illustrated as followed. Firstly, most of the studies on the effects of bariatric surgery in the long-term included in this study were observational studies, and the outcomes of microvascular, macrovascular complications and all-cause mortality did not include RCTs. This makes the results likely to be affected by potential bias or confounding. Secondly, the diagnostic criteria and definitions of diabetes remission in the included studies were not completely uniform, which may increase the probability of heterogeneity in the pooled results. In addition, this study had a small sample size of included studies, this study cannot identify the possible publication bias. Therefore, further high-quality evidence may be needed to demonstrate the long-term advantages of metabolic surgery over drugs in people with type 2 diabetes.

4.6 Recommendation

This meta-analysis examined the long-term the diabetes remission rate, incidence of macrovascular complications, microvascular complications, and all-cause mortality of bariatric/metabolic surgery versus pharmacologic therapy in type 2 diabetes patients. In this study, metabolic surgery had better effects than conventional therapy for all outcomes over 5 years period. However, short-term (perioperative) mortality and morbidity from bariatric surgery(16), as well as adverse events such as anemia and hypoglycemic episodes in the long-term, were reported to be increased in the surgical group(17). Moreover, the mechanisms by which metabolic surgery can stably improve the hyperglycemic metabolic status of patients with type 2 diabetes in the short- and long-term are still unclear(18). Therefore, I recommend that further high-quality evidence is needed to provide on whether metabolic surgery can become the first-line treatment for type 2 diabetes replacing or combining with the medical treatment and brings long-term stable well-being to people with type 2 diabetes.

6 Conclusion

Metabolic surgery had significantly greater long-term effects than pharmacologic therapy for the diabetes remission rate, incidence of macrovascular complications, microvascular complications, and all-cause mortality in T2DM patients. Yet the limitations of this study might affect the outcomes. More RCT studies with long-term follow-up are needed to validate the long-term effects of metabolic surgery compared to conventional treatment in the management of diabetes.

7 Acknowledgements

Thanks to all people who helped me, especially my capstone advisor, Dr. Youngwon Kim (HKU), who provided me with a lot of support and help, even though we haven't seen each other face to face because of the pandemic. And my roommates, who have given me a lot of spiritual support. This meta-analysis would never have been completed without you.

8 Conflict of interests

The authors declare no conflicting interests.

9 References

1. Worldwide trends in diabetes since 1980: a pooled analysis of 751 population-based studies with 4.4 million participants. *Lancet*. 2016;387(10027):1513-30.
2. Control CfD, Prevention. National diabetes statistics report: estimates of diabetes and its burden in the United States, 2014. Atlanta, GA: US Department of Health and Human Services. 2014;2014.
3. American Diabetes A. 8. Obesity Management for the Treatment of Type 2 Diabetes: Standards of Medical Care in Diabetes—2021. *Diabetes Care*. 2020;44(Supplement_1):S100-S10.
4. Gregg EW, Chen H, Wagenknecht LE, Clark JM, Delahanty LM, Bantle J, et al. Association of an intensive lifestyle intervention with remission of type 2 diabetes. *Jama*. 2012;308(23):2489-96.
5. Saydah SH, Fradkin J, Cowie CC. Poor control of risk factors for vascular disease among adults with previously diagnosed diabetes. *Jama*. 2004;291(3):335-42.
6. Sheng B, Truong K, Spitler H, Zhang L, Tong X, Chen L. The Long-Term Effects of Bariatric Surgery on Type 2 Diabetes Remission, Microvascular and Macrovascular Complications, and Mortality: a Systematic Review and Meta-Analysis. *Obesity Surgery*. 2017;27(10):2724-32.
7. Currie AC, Askari A, Fangueiro A, Mahawar K. Network Meta-Analysis of Metabolic Surgery Procedures for the Treatment of Obesity and Diabetes. *Obes Surg*. 2021;31(10):4528-41.
8. Russel SM, Valle V, Spagni G, Hamilton S, Patel T, Abdukadyrov N, et al. Physiologic Mechanisms of Type II Diabetes Mellitus Remission Following Bariatric Surgery: a Meta-analysis and Clinical Implications. *J Gastrointest Surg*. 2020;24(3):728-41.
9. Buchwald H, Estok R, Fahrbach K, Banel D, Jensen MD, Pories WJ, et al. Weight and type 2 diabetes after bariatric surgery: systematic review and meta-analysis. *Am J Med*. 2009;122(3):248-56.e5.
10. Gloy VL, Briel M, Bhatt DL, Kashyap SR, Schauer PR, Mingrone G, et al. Bariatric surgery versus non-surgical treatment for obesity: a systematic review and meta-analysis of randomised controlled trials. *Bmj*. 2013;347:f5934.
11. Sheng B, Truong K, Spitler H, Zhang L, Tong X, Chen L. The Long-Term Effects of Bariatric Surgery on Type 2 Diabetes Remission, Microvascular and Macrovascular Complications, and Mortality: a Systematic Review and Meta-Analysis. *Obes Surg*. 2017;27(10):2724-32.
12. Billeter AT, Scheurlen KM, Probst P, Eichel S, Nickel F, Kopf S, et al. Meta-analysis of metabolic surgery versus medical treatment for microvascular complications in patients with type 2 diabetes mellitus. *Br J Surg*. 2018;105(3):168-81.
13. Chen X, Kong X. Diabetes remission and relapse after metabolic surgery. *J Diabetes Investig*. 2018;9(6):1237-8.
14. Papatheodorou K, Banach M, Bekiari E, Rizzo M, Edmonds M. Complications of Diabetes 2017. *J Diabetes Res*. 2018;2018:3086167.
15. Tsilingiris D, Koliaki C, Kokkinos A. Remission of Type 2 Diabetes Mellitus after Bariatric Surgery: Fact or Fiction? *Int J Environ Res Public Health*. 2019;16(17).
16. Schauer PR, Mingrone G, Ikramuddin S, Wolfe B. Clinical outcomes of metabolic surgery: efficacy of glycemic control, weight loss, and remission of diabetes. *Diabetes Care*. 2016;39(6):902-11.
17. Consortium LAoBS. Perioperative safety in the longitudinal assessment of bariatric surgery. *New England Journal of Medicine*. 2009;361(5):445-54.

18. Russel SM, Valle V, Spagni G, Hamilton S, Patel T, Abdukadyrov N, et al. Physiologic Mechanisms of Type II Diabetes Mellitus Remission Following Bariatric Surgery: a Meta-analysis and Clinical Implications. *Journal of Gastrointestinal Surgery*. 2020;24(3):728-41.
19. Association AD. 9. Pharmacologic Approaches to Glycemic Treatment: Standards of Medical Care in Diabetes—2021. *Diabetes Care*. 2020;44(Supplement_1):S111-S24.
20. Burns PB, Rohrich RJ, Chung KC. The levels of evidence and their role in evidence-based medicine. *Plast Reconstr Surg*. 2011;128(1):305-10.
21. Shamseer L, Moher D, Clarke M, Gherzi D, Liberati A, Petticrew M, et al. Preferred reporting items for systematic review and meta-analysis protocols (PRISMA-P) 2015: elaboration and explanation. *Bmj*. 2015;349.
22. Zimmerman RS. Diabetes mellitus: management of microvascular and macrovascular complications. *J Cleveland Clinic: Centers for Continuing Education*. 2016.
23. De Boer IH, Bangalore S, Benetos A, Davis AM, Michos ED, Muntner P, et al. Diabetes and hypertension: a position statement by the American Diabetes Association. *Diabetes care*. 2017;40(9):1273-84.
24. Association AD. 10. Cardiovascular Disease and Risk Management: Standards of Medical Care in Diabetes—2021. *Diabetes Care*. 2020;44(Supplement_1):S125-S50.
25. Downs SH, Black N. The feasibility of creating a checklist for the assessment of the methodological quality both of randomised and non-randomised studies of health care interventions. *Journal of Epidemiology & Community Health*. 1998;52(6):377-84.
26. Tice JA, Karliner L, Walsh J, Petersen AJ, Feldman MD. Gastric banding or bypass? A systematic review comparing the two most popular bariatric procedures. *Am J Med*. 2008;121(10):885-93.
27. NIH conference. Gastrointestinal surgery for severe obesity. Consensus Development Conference Panel. *Ann Intern Med*. 1991;115(12):956-61.
28. Sjöström L, Peltonen M, Jacobson P, Ahlin S, Andersson-Assarsson J, Anveden Å, et al. Association of bariatric surgery with long-term remission of type 2 diabetes and with microvascular and macrovascular complications. *Jama*. 2014;311(22):2297-304.
29. Hsu CC, Almulaifi A, Chen JC, Ser KH, Chen SC, Hsu KC, et al. Effect of Bariatric Surgery vs Medical Treatment on Type 2 Diabetes in Patients With Body Mass Index Lower Than 35: Five-Year Outcomes. *JAMA Surg*. 2015;150(12):1117-24.
30. Schauer PR, Bhatt DL, Kirwan JP, Wolski K, Aminian A, Brethauer SA, et al. Bariatric Surgery versus Intensive Medical Therapy for Diabetes - 5-Year Outcomes. *N Engl J Med*. 2017;376(7):641-51.
31. Adams TD, Davidson LE, Litwin SE, Kim J, Kolotkin RL, Nanjee MN, et al. Weight and Metabolic Outcomes 12 Years after Gastric Bypass. *New England Journal of Medicine*. 2017;377(12):1143-55.
32. Ikramuddin S, Korner J, Lee WJ, Thomas AJ, Connett JE, Bantle JP, et al. Lifestyle Intervention and Medical Management With vs Without Roux-en-Y Gastric Bypass and Control of Hemoglobin A1c, LDL Cholesterol, and Systolic Blood Pressure at 5 Years in the Diabetes Surgery Study. *Jama*. 2018;319(3):266-78.
33. Mingrone G, Panunzi S, De Gaetano A, Guidone C, Iaiconelli A, Capristo E, et al. Metabolic surgery versus conventional medical therapy in patients with type 2 diabetes: 10-year follow-up of an open-label, single-centre, randomised controlled trial. *The Lancet*. 2021;397(10271):293-304.
34. Johnson BL, Blackhurst DW, Latham BB, Cull DL, Bour ES, Oliver TL, et al. Bariatric surgery is associated with a reduction in major macrovascular and microvascular complications in moderately to severely obese patients with type 2 diabetes mellitus. *J Am Coll Surg*. 2013;216(4):545-56; discussion 56-8.
35. O'Brien R, Johnson E, Haneuse S, Coleman KJ, O'Connor PJ, Fisher DP, et al. Microvascular Outcomes in Patients With Diabetes After Bariatric Surgery Versus Usual Care: A Matched Cohort Study. *Ann Intern Med*. 2018;169(5):300-10.
36. Madsen LR, Baggesen LM, Richelsen B, Thomsen RW. Effect of Roux-en-Y gastric bypass surgery on diabetes remission and complications in individuals with type 2 diabetes: a Danish population-based matched cohort study. *Diabetologia*. 2019;62(4):611-20.
37. Fisher DP, Johnson E, Haneuse S, Arterburn D, Coleman KJ, O'Connor PJ, et al. Association Between Bariatric Surgery and Macrovascular Disease Outcomes in Patients With Type 2 Diabetes and Severe Obesity. *JAMA*. 2018;320(15):1570-82.

38. Aminian A, Zajichek A, Arterburn DE, Wolski KE, Brethauer SA, Schauer PR, et al. Association of Metabolic Surgery With Major Adverse Cardiovascular Outcomes in Patients With Type 2 Diabetes and Obesity. *JAMA*. 2019;322(13):1271-82.
39. Pontiroli AE, Zakaria AS, Mantegazza E, Morabito A, Saibene A, Mozzi E, et al. Long-term mortality and incidence of cardiovascular diseases and type 2 diabetes in diabetic and nondiabetic obese patients undergoing gastric banding: a controlled study. *Cardiovasc Diabetol*. 2016;15:39.
40. Eliasson B, Liakopoulos V, Franzén S, Näslund I, Svensson AM, Ottosson J, et al. Cardiovascular disease and mortality in patients with type 2 diabetes after bariatric surgery in Sweden: a nationwide, matched, observational cohort study. *Lancet Diabetes Endocrinol*. 2015;3(11):847-54.
41. Higgins JP. *Cochrane handbook for systematic reviews of interventions* version. *Cochrane handbook for systematic reviews of interventions* version. 2011;5(0):2011.
42. Ismail-Beigi F, Craven T, Banerji MA, Basile J, Calles J, Cohen RM, et al. Effect of intensive treatment of hyperglycaemia on microvascular outcomes in type 2 diabetes: an analysis of the ACCORD randomised trial. *The Lancet*. 2010;376(9739):419-30.
43. Tuttle KR, Bakris GL, Bilous RW, Chiang JL, De Boer IH, Goldstein-Fuchs J, et al. Diabetic kidney disease: a report from an ADA Consensus Conference. *Diabetes care*. 2014;37(10):2864-83.
44. Committee ADAPP, Committee: ADAPP. 10. Cardiovascular disease and risk management: standards of medical care in diabetes—2022. *Diabetes Care*. 2022;45(Supplement_1):S144-S74.
45. Saydah SH, Eberhardt MS, Loria CM, Brancati FL. Age and the burden of death attributable to diabetes in the United States. *American journal of epidemiology*. 2002;156(8):714-9.
46. Khalil CA, Roussel R, Mohammedi K, Danchin N, Marre M. Cause-specific mortality in diabetes: recent changes in trend mortality. *European journal of preventive cardiology*. 2012;19(3):374-81.
47. Cardoso L, Rodrigues D, Gomes L, Carrilho F. Short-and long-term mortality after bariatric surgery: a systematic review and meta-analysis. *Diabetes, Obesity and Metabolism*. 2017;19(9):1223-32.
48. Khorgami Z, Shoar S, Saber AA, Howard CA, Danaei G, Sclabas GM. Outcomes of Bariatric Surgery Versus Medical Management for Type 2 Diabetes Mellitus: a Meta-Analysis of Randomized Controlled Trials. *Obes Surg*. 2019;29(3):964-74.
49. Khorgami Z, Shoar S, Saber AA, Howard CA, Danaei G, Sclabas GM. Outcomes of Bariatric Surgery Versus Medical Management for Type 2 Diabetes Mellitus: a Meta-Analysis of Randomized Controlled Trials. *Obesity Surgery*. 2019;29(3):964-74.
50. Brethauer SA, Aminian A, Romero-Talamás H, Batayyah E, Mackey J, Kennedy L, et al. Can diabetes be surgically cured? Long-term metabolic effects of bariatric surgery in obese patients with type 2 diabetes mellitus. *Ann Surg*. 2013;258(4):628-36; discussion 36-7.
51. Wu GZ, Cai B, Yu F, Fang Z, Fu XL, Zhou HS, et al. Meta-analysis of bariatric surgery versus non-surgical treatment for type 2 diabetes mellitus. *Oncotarget*. 2016;7(52):87511-22.
52. Pareek M, Schauer PR, Kaplan LM, Leiter LA, Rubino F, Bhatt DL. Metabolic surgery: weight loss, diabetes, and beyond. *Journal of the American College of Cardiology*. 2018;71(6):670-87.
53. Yan Y-x, Wang G-f, Xu N, Wang F-l. Correlation between Postoperative Weight Loss and Diabetes Mellitus Remission: A Meta-Analysis. *Obesity Surgery*. 2014;24(11):1862-9.
54. Wickremesekera K, Miller G, Naotunne TD, Knowles G, Stubbs RS. Loss of insulin resistance after Roux-en-Y gastric bypass surgery: a time course study. *Obes Surg*. 2005;15(4):474-81.
55. Cummings DE, Overduin J, Foster-Schubert KE. Gastric bypass for obesity: mechanisms of weight loss and diabetes resolution. *J Clin Endocrinol Metab*. 2004;89(6):2608-15.
56. Thaler JP, Cummings DE. Minireview: Hormonal and metabolic mechanisms of diabetes remission after gastrointestinal surgery. *Endocrinology*. 2009;150(6):2518-25.

57. Cho YM, Merchant CE, Kieffer TJ. Targeting the glucagon receptor family for diabetes and obesity therapy. *Pharmacol Ther.* 2012;135(3):247-78.
58. Patti ME, Houten SM, Bianco AC, Bernier R, Larsen PR, Holst JJ, et al. Serum bile acids are higher in humans with prior gastric bypass: potential contribution to improved glucose and lipid metabolism. *Obesity (Silver Spring).* 2009;17(9):1671-7.
59. da Silva Rodrigues MR, Santo MA, Favero GM, Vieira EC, Artoni RF, Nogaroto V, et al. Metabolic surgery and intestinal gene expression: Digestive tract and diabetes evolution considerations. *World Journal of Gastroenterology: WJG.* 2015;21(22):6990.
60. Shih K-C, Janckila AJ, Lee W-J, Chou Y-C, Huang C-J, Kwok C-F, et al. Effects of bariatric weight loss surgery on glucose metabolism, inflammatory cytokines, and serum tartrate-resistant acid phosphatase 5a in obese Chinese adults. *Clinica Chimica Acta.* 2016;453:197-202.
61. Liou AP, Paziuk M, Luevano JM, Jr., Machineni S, Turnbaugh PJ, Kaplan LM. Conserved shifts in the gut microbiota due to gastric bypass reduce host weight and adiposity. *Sci Transl Med.* 2013;5(178):178ra41.
62. Solomon SD, Chew E, Duh EJ, Sobrin L, Sun JK, VanderBeek BL, et al. Diabetic retinopathy: a position statement by the American Diabetes Association. *Diabetes care.* 2017;40(3):412-8.
63. Chen X, Zhang J, Zhou Z. The effects of metabolic surgery on microvascular complications in obese patients with type 2 diabetes: a meta-analysis. *Surgery for Obesity and Related Diseases.* 2021;17(2):434-43.
64. Kearney P, Blackwell L, Collins R, Keech A, Simes J, Peto R, et al. Efficacy of cholesterol-lowering therapy in 18,686 people with diabetes in 14 randomised trials of statins: a meta-analysis. *Lancet (London, England).* 2008;371(9607):117-25.
65. Yanovski SZ, Yanovski JA. Long-term drug treatment for obesity: a systematic and clinical review. *Jama.* 2014;311(1):74-86.
66. Wing RR, Bolin P, Brancati FL, Bray GA, Clark JM, Coday M, et al. Cardiovascular effects of intensive lifestyle intervention in type 2 diabetes. *N Engl J Med.* 2013;369(2):145-54.
67. Cunningham JW, Wiviott SD. Modern obesity pharmacotherapy: weighing cardiovascular risk and benefit. *Clin Cardiol.* 2014;37(11):693-9.
68. Yan G, Wang J, Zhang J, Gao K, Zhao Q, Xu X. Long-term outcomes of macrovascular diseases and metabolic indicators of bariatric surgery for severe obesity type 2 diabetes patients with a meta-analysis. *PLoS One.* 2019;14(12):e0224828.
69. Syn NL, Cummings DE, Wang LZ, Lin DJ, Zhao JJ, Loh M, et al. Association of metabolic–bariatric surgery with long-term survival in adults with and without diabetes: a one-stage meta-analysis of matched cohort and prospective controlled studies with 174 772 participants. *The Lancet.* 2021;397(10287):1830-41.
70. Schauer PR, Bhatt DL, Kirwan JP, Wolski K, Aminian A, Brethauer SA, et al. Bariatric Surgery versus Intensive Medical Therapy for Diabetes — 5-Year Outcomes. *New England Journal of Medicine.* 2017;376(7):641-51.

Author, year, Study design	Sample size		Hazard Ratio of Macrovascular complications	Hazard Ratio of Microvascular complications	Hazard Ratio of Mortality
	Surgical group	Control group			
Johnson, BL. MS, 2013	13,371	2,580	0.39 (0.29,0.51)	0.22 (0.09,0.59)	-
Sjöström L, 2014	115	62	0.74 (0.58,0.94)	0.43 (0.33,0.58)	-
Eliasson B, 2015	6132	6132	-	-	0.42(0.30,0.57)
Pontioli, A. E., 2016	52	127	-	-	0.34(0.13,0.87)
O'Brien R, 2018	4,024	11,059	-	0.41(0.34,0.48)	-
Fisher DP, 2018, cohort	5,301	14,934	0.60 (0.42,0.86)	-	0.33 (0.21,0.52)
Aminian A, 2019	2,287	11,435	0.61 (0.55,0.69)	-	0.59 (0.48-0.72)
Madsen LR, 2019	1,111	1,074	0.76(0.49,1.18)	0.53(0.38,0.73)	-

Appendix 1 Summary table of the secondary outcomes in the included studies