

1 Evaluating the relationship between glycemic control and bone fragility within the UK  
2 biobank: Observational and one-sample Mendelian randomization analyses

3

4 Samuel Ghatan<sup>1</sup>, Fjorda Koromani<sup>1</sup>, Katerina Trajanoska<sup>2</sup>, Evert F.S. van Velsen<sup>1</sup>, Maryam  
5 Kavousi<sup>3</sup>, M Carola. Zillikens, Carolina Medina-Gomez<sup>1</sup>, Ling Oei<sup>1\*</sup>, Fernando  
6 Rivadeneira<sup>1\*\*,\*\*</sup>.

7

- 8 1. Department of Internal Medicine, Erasmus Medical Center, Rotterdam, The  
9 Netherlands
- 10 2. Canada Excellence Research Chair in Genomic Medicine, Victor Philip Dahdaleh  
11 Institute of Genomic Medicine, Department of Human Genetics, Faculty of Medicine  
12 and Health Sciences, McGill University, Montreal, QC, Canada.
- 13 3. Department of Epidemiology, Erasmus Medical Center, Rotterdam, The Netherlands

14

15 \*Equal contribution

16 \*\*Correspondence:

17 Fernando Rivadeneira, Department of Internal Medicine, Erasmus MC University Medical  
18 Center Rotterdam, The Netherlands  
19 Email: [f.rivadeneira@erasmusmc.nl](mailto:f.rivadeneira@erasmusmc.nl)

20

21 E-mail of other authors:

22 Samuel Ghatan ([s.ghatan@erasmusmc.nl](mailto:s.ghatan@erasmusmc.nl)), Fjorda Koromani ([f.koromani@erasmusmc.nl](mailto:f.koromani@erasmusmc.nl)),  
23 Katerina Trajanoska ([katerina.trajanoska@mail.mcgill.ca](mailto:katerina.trajanoska@mail.mcgill.ca)), Evert F.S. van Velsen  
24 ([e.vanvelsen@erasmusmc.nl](mailto:e.vanvelsen@erasmusmc.nl)), Maryam Kavousi ([m.kavousi@erasmusmc.nl](mailto:m.kavousi@erasmusmc.nl)), M. Carola  
25 Zillikens ([m.c.zillikens@erasmusmc.nl](mailto:m.c.zillikens@erasmusmc.nl)), Carolina. Medina-Gomez

**NOTE: This preprint reports new research that has not been certified by peer review and should not be used to guide clinical practice.**

26 ([m.medinagomez@erasmusmc.nl](mailto:m.medinagomez@erasmusmc.nl)), Ling Oei ([loei@jvg.nl](mailto:loei@jvg.nl)), Fernando Rivadeneira

27 ([f.rivadeneira@erasmusmc.nl](mailto:f.rivadeneira@erasmusmc.nl))

28

29 Abstract

30 Aims/hypothesis: This study aimed to: (1) examine the relationship between glycemic control,  
31 bone mineral density estimated from heel ultrasound (eBMD) and fracture risk in individuals  
32 with type 1 and type 2 diabetes and (2) perform a one-sample Mendelian randomization study  
33 to explore potential linear and non-linear associations between glycemic control, eBMD, and  
34 fractures.

35 Methods: This study comprised 452,131 individuals from the UK Biobank with glycated  
36 hemoglobin A1C (HbA<sub>1c</sub>) and eBMD levels. At baseline, 4,078 participants were diagnosed  
37 with type 1 diabetes and 23,682 with type 2 diabetes. HbA<sub>1c</sub> was used to classify patients into  
38 "adequately-" (ACD; n=17,078; HbA<sub>1c</sub> < 7.0%/53mmol/mol) and "inadequately-" (ICD;  
39 n=10,682; HbA<sub>1c</sub> ≥ 7.0%/53mmol/mol) controlled diabetes. The association between glycemic  
40 control (continuous and categorical) and eBMD was tested using linear regression, while  
41 fracture risk was estimated in Cox regression models, both controlling for covariates.  
42 Mendelian randomization (MR) was used to evaluate linear and non-linear causal relationships  
43 between HbA<sub>1c</sub> levels, fracture risk, and eBMD.

44 Results: In individuals with type 1 diabetes, a 1% unit (11mmol/mol) increase in HbA<sub>1c</sub> levels  
45 was associated with a 12% increase in fracture risk (HR: 1.12, 95% CI [1.05-1.19]). Individuals  
46 with type 1 diabetes had lower eBMD in both the ICD (beta = -0.08, 95% CI [-0.11, -0.04])  
47 and ACD (beta = -0.05, 95% CI [-0.11,0.01]) groups, as compared to subjects without diabetes.  
48 Fracture risk was highest in individuals with type 1 diabetes and ICD (HR 2.84, 95% CI [2.53,  
49 3.19]), followed by those with ACD (HR 2.26, 95% CI [1.91, 2.69]). Individuals with type 2

50 diabetes had higher eBMD in both ICD (beta=0.12SD, 95%CI [0.10, 0.14]) and ACD  
51 (beta=0.07SD, 95%CI [0.05, 0.08]) groups. Significant evidence for a non-linear association  
52 between HbA<sub>1c</sub> and fracture risk was observed (F-test ANOVA p-value = 0.002) in individuals  
53 with type 2 diabetes, with risk being increased at both low and high levels of HbA<sub>1c</sub>. Fracture  
54 risk between the type 2 diabetes ACD and ICD groups was not significantly different (HR:  
55 0.97, 95%CI [0.91-1.16]), despite increased BMD. In MR analyses genetically predicted higher  
56 HbA<sub>1c</sub> levels were not significantly associated with fracture risk (Causal Risk Ratio: 1.04,  
57 95%CI [0.95-1.14]). However, disease stratified analyses were underpowered. We did observe  
58 evidence of a non-linear causal association with eBMD (quadratic test P-value = 0.0002),  
59 indicating U-shaped relationship between HbA<sub>1c</sub> and eBMD.

60 Conclusion/interpretation: We obtained evidence that lower HbA<sub>1c</sub> levels will reduce fracture  
61 risk in patients with type 1 diabetes. In individuals with type 2 diabetes, lowering HbA<sub>1c</sub> levels  
62 can mitigate the risk of fractures up to a threshold, beyond which the risk may begin to rise  
63 once more. MR analyses demonstrated a causal relationship between genetically predicted  
64 HbA<sub>1c</sub> levels and eBMD, but not fracture risk.

65  
66  
67  
68  
69  
70  
71  
72  
73

## 74 Introduction

75 Diabetes mellitus is a common metabolic disorder characterized by elevated blood glucose  
76 levels, affecting millions of individuals worldwide. While the detrimental effects of poor  
77 glycemic control in diabetes on various organ systems have been extensively investigated [1],  
78 its impact on skeletal health remains an area of ongoing research. Previous studies have  
79 established fracture risk as a complication of diabetes [2-4]. Fractures pose significant  
80 challenges, leading to considerable morbidity, mortality, and healthcare costs [5, 6]. However,  
81 understanding the complex relation between glycemic control, measured by glycosylated  
82 hemoglobin (HbA<sub>1c</sub>) levels, and fracture risk in individuals with both type 1 diabetes and type  
83 2 diabetes is crucial for implementing preventive measures and improving patient outcomes  
84 [7]. Additionally, investigating the relationship between glycemic control and bone mineral  
85 density (BMD), a key determinant of fracture susceptibility, can offer insights into potential  
86 therapeutic strategies for mitigating the skeletal complications associated with diabetes.  
87 Glycemic control has been shown to be a key determinant of other complications of diabetes  
88 including microvascular disease, myocardial infarction and all-cause mortality [1]. To address  
89 these knowledge gaps comprehensively, we conducted a large-scale observational study  
90 utilizing data from the UK Biobank, a well-characterized population-based resource [8]. Our  
91 study aimed to examine the relationship between glycemic control, BMD and fracture risk in  
92 individuals with type 1 diabetes and type 2 diabetes; and utilize linear and non-linear  
93 Mendelian randomization to explore potential causal associations.

94

## 95 Research Design and Methods

### 96 Study population

97 The UK biobank is a prospective cohort study that recruited up to 502,410 participants across  
98 22 centers in the UK. Participants were aged between 40-59 years at baseline [8]. HbA<sub>1c</sub>

99 levels were measured in 482,253 individuals across two center visits. The initial assessment  
100 visit took place between 2006-2010 and encompassed 95% of the measurements taken. The  
101 second assessment visit took place between 2012-2013. The date of HbA<sub>1c</sub> measurement was  
102 established as baseline. Individuals with prevalent fractures at baseline were excluded  
103 (fracture definition provided below). The median follow-up time was 11.72 years during  
104 which 20,414 incident fractures occurred. The follow-up time end date was determined as the  
105 date of the last recorded fracture. Individuals who did not fracture or died before the end date  
106 were censored. The date of an individual's death was obtained via death registry (data field  
107 40000). A subset of 452,131 individuals also had eBMD measurements available, obtained  
108 over three center visits. The initial visit took place between 2006-2010 encompassing 90% of  
109 the measurements taken. Subsequent visits took place between 2012-2014 and 2014-2016.  
110 The Mendelian randomization study was performed on a subset of 379,600 individuals of  
111 European ancestry who had genotype information available [9]. The UK biobank was  
112 conducted in full accordance with the ethical principles outlined in the Declaration of  
113 Helsinki, as revised in 2013, including adherence to protocols approved by their respective  
114 institutional ethics review committees and all participants provided written informed consent.

115 Diabetes definition and glycemc measures

116 Individuals with type 2 diabetes were identified either via self-reporting at baseline (data field  
117 130709), obtaining a HbA<sub>1c</sub> level > 6.5% (48 mmol/mol) at baseline, or via a recorded  
118 International Classification of Diseases, Tenth Revision (ICD-10) code E11 (non-insulin-  
119 dependent diabetes mellitus) (data field 130708). Similarly, individuals with type 1 diabetes  
120 were defined using self-reported data, as well as, the ICD-10 code E10 (Insulin-dependent  
121 diabetes mellitus). Plasma HbA<sub>1c</sub> levels were measured using variant II turbo Hemoglobin  
122 Testing System; from Bio-Rad. Individuals with diabetes and HbA<sub>1c</sub> levels  $\geq$  7%  
123 (53mmol/mol) were considered to have inadequate glycemc control, conversely those with

124 <7% were considered as having adequate control, according to American Diabetes Association  
125 (ADA) guidelines [10]. The duration of diabetes was determined based on either the self-  
126 reported age of diabetes diagnosis (data field 2976) or the earliest date of the corresponding  
127 ICD-10 code. In cases where self-reported ages were unavailable or entered incorrectly, they  
128 were replaced with the first date of the ICD-10 code. Pre-diabetes was defined using ADA  
129 guidelines as HbA<sub>1c</sub> levels of 5.7-6.4% (39-46mmol/mol) [11].

130

### 131 Fractures and BMD measurements

132 Estimated BMD (eBMD) measurements were calculated from measured quantitative  
133 ultrasound speed of sound (SOS) and broadband ultrasound attenuation (BUA) of the heel.  
134 Measurements were collected over three timepoints. The data collection and quality control of  
135 eBMD measurements were conducted in accordance with the procedure outlined by the  
136 GEFOS consortium [12]. Fractures were defined according to ICD-10 codes. A full list of the  
137 codes used can be located in supplementary table 1. Fractures of the skull, face, hands and feet,  
138 atypical femoral fractures, pathological fractures due to malignancy, periprosthetic, and healed  
139 fracture codes were excluded. Individuals who retracted their informed consent, as of May 4<sup>th</sup>,  
140 2023, were removed.

141

### 142 Complications

143 Cardiovascular disease was defined using the ICD-10 codes I20, angina pectoris; I21, acute  
144 myocardial infarction; I22 subsequent ST elevation (STEMI) and non-ST elevation (NSTEMI)  
145 myocardial infarction; I23, certain current complications following ST elevation (STEMI) and  
146 non-ST elevation (NSTEMI) myocardial infarction; I24, other acute ischemic heart diseases;  
147 or I25, chronic ischemic heart disease. Chronic kidney disease was defined by ICD-10 code  
148 N18; Chronic kidney disease. Diabetic retinopathy was defined by the ICD-10 codes: E08.3 -

149 Diabetes mellitus due to underlying condition with ophthalmic complications, E09.3 - Drug or  
150 chemical induced diabetes mellitus with ophthalmic complications, E10.3 - Type 1 diabetes  
151 mellitus with ophthalmic complications, E11.3 - Type 2 diabetes mellitus with ophthalmic  
152 complications, E13.3 - Other specified diabetes mellitus with ophthalmic complications.

153

154 Statistical analyses

155 Observational associations

156 The reporting of epidemiological results was undertaken following the STROBE and  
157 STROBE-MR guidelines. The effect of HbA<sub>1c</sub> on BMD and fracture risk was estimated from  
158 linear regression and Cox proportional hazards models, respectively. Estimates were also  
159 obtained for the association between glycemic groups (i.e., ACD, ICD, pre-diabetes) and  
160 outcomes in comparison to diabetes-free individuals. Additionally, to compare the fracture risk  
161 between glycemic groups hazard ratios (HR) were obtained when setting ACD as the reference  
162 group. The continuous effect of HbA<sub>1c</sub> levels on eBMD and fractures was assessed in type 1  
163 diabetes, type 2 diabetes and diabetes-free sub-group analyses. Non-linear effects were also  
164 evaluated using linear tail-restricted cubic spline models with 3 knots using the ‘rms’ package  
165 in R. The number of knots was determined by visual inspection of plots and using Akaike  
166 information criterion, to compare models with different degrees of freedom. The significance  
167 of the non-linear spline terms was evaluated using an F-test ANOVA test. All models were  
168 adjusted for: age, age<sup>2</sup>, sex, height, weight, smoking status (data field 20116), alcohol intake  
169 (data field 1558), creatinine (23478), c-reactive protein (data field 30710), menopause (data  
170 field 2724), genetic ethnicity (data field 22006), self-reported ethnicity (data field 21000),  
171 index of Multiple Deprivation (data field 26410), and duration of moderate activity (data field  
172 894). In Cox models the proportionality of hazards assumption was evaluated using Schoenfeld

173 residual plots. Variables with missing information (less than 20%) were imputed using the mice  
174 package in R [13].

175

176 Sensitivity analyses

177 For sensitivity analyses, a second higher HbA<sub>1c</sub> cut-off was defined at 9% (75mmol/mol) with  
178 those above it being classified as having adequate control and vice versa. This cut-off was  
179 motivated by papers showing increased fracture risk at higher HbA<sub>1c</sub> cut-offs [14, 15].  
180 Additionally, to investigate the association between low HbA<sub>1c</sub> and fracture risk, we further  
181 split those individuals with type 2 diabetes and ACD by a HbA<sub>1c</sub> level of below 5.4%  
182 (36mmol/mol) (the mean of the sample) and labelled these individuals as hypoglycemic. The  
183 risk of fractures in individuals with pre-diabetes was also evaluated. The effect of diabetes  
184 duration of fracture risk was also assessed in individuals with type 2 diabetes and available  
185 duration data (n=19,263) by including diabetes duration as a covariate in the Cox model.  
186 Additionally, disease duration was categorized into 3 groups: less than 5 years, more than 5  
187 years less but than 10 years, and 10 years and greater. Effect estimates were obtained using  
188 Cox regression models with the group of less than 5 years as the reference category. Lastly, to  
189 assess the potential effect diabetic complications and comorbidities on fracture risk and HbA<sub>1c</sub>  
190 levels we adjusted our statistical models for hemoglobin concentration (data field 30020), as a  
191 measure of anemia, chronic kidney disease, cardiovascular disease, and diabetic retinopathy.

192

193 Selection of genetic instrumental variables

194 We selected 88 conditionally independent genetic variants as instrumental variables for HbA<sub>1c</sub>  
195 levels (supplementary table 2) based on their association with HbA<sub>1c</sub> ( $p < 5 \times 10^{-8}$ ) in a genome-  
196 wide association study of 191,362 individuals of European ancestry [16]. Palindromic SNPs  
197 were removed and replaced by linkage disequilibrium proxies ( $r^2 > 0.80$ ). Standardized genetic



198 risk scores (GRS) were constructed using the 88 genetic variants for individuals with available  
199 genetic data. To test the instrument strength, linear regression models, adjusted for age at  
200 baseline, sex, and 10 genetic principal components of ancestry, were constructed. The GRS  
201 explained 3% of the variance of HbA<sub>1c</sub> within the UK biobank population and displayed an F  
202 statistic of 1068.

203

#### 204 Linear Mendelian randomization

205 For a genetic variant to act as a valid instrumental variable in a MR analysis it had to satisfy  
206 the following assumptions: 1) relevance: reliably associated with each of the exposures  
207 included in the model; 2) exclusion restriction: the variant needs to be associated with the  
208 outcome only through the exposure of interest; and 3) independence: the variant should be  
209 conditionally independent of the outcome given the exposure and confounding factors [17]. To  
210 obtain linear causal inferences, we applied a two-stage least squares regression (2SLS) for  
211 continuous outcomes and structural mean models (SMM) for binary outcomes [18, 19]. Both  
212 regression stages were adjusted by age, sex, and the first 10 principal components of genetic  
213 ancestry. A sensitivity analysis was performed by removing related individuals (kinship  
214 coefficient < 0.0884) and recalculating regression estimates [20]. MR power calculations were  
215 derived using the mRnd web tool [21].

216

#### 217 Non-linear Mendelian randomization

218 To assess non-linear causal effects we sought to stratify individuals and calculate localized  
219 average causal effects (LACE) using the ratio method (instrumental variable outcome  
220 association divided by the instrumental variable exposure association) [22]. To stratify  
221 individuals we adopted the doubly-ranked method [22], which overcomes an important  
222 limitation of the residual method, namely that it assumes that the effect of the genetic

223 instrument on the exposure is constant and linear. Briefly, the doubly-ranked method is a non-  
224 parametric approach for exposure stratification, such that, the stratification is not a function of  
225 the instrumental variables and each strata has a different average level of the exposure. This  
226 involves the initial ranking of individuals based on their level of the instrumental variables,  
227 which are then divided into pre-strata. After this, the individuals within each pre-stratum are  
228 ranked based on their level of exposure and further divided into strata. Additional test statistics  
229 for non-linearity were calculated using the ‘SUMnlmr’ R package [23]. Next, we obtained  
230 causal inferences on the shape of the exposure-outcome relationship using fractional  
231 polynomials [24]. These polynomials represent the stratification of individuals into either 10  
232 strata or 100 strata. Non-linearity tests included: the fractional polynomial degree test, the  
233 fractional polynomial non-linearity test, the quadratic test and Cochran’s Q-test. The fractional  
234 polynomial degree test was used to indicate the polynomial degree preference, with a low p-  
235 value indicating preference of a degree 2 polynomial. The fractional polynomial non-linearity  
236 tests the best-fitting fractional polynomial of a degree 1 against the linear model, with a low p-  
237 value indicating a preference of fractional polynomials of degree 1. The quadratic test meta  
238 regresses LACE estimates against the mean value of the exposure in each stratum, with a lower  
239 p-value indicating non-linearity. Lastly, the Cochran’s Q-test, tests also whether the LACE  
240 estimates differ more than expected by chance, with a lower p-value indicating non-linearity  
241 [23, 24].

242

## 243 Results

### 244 Population characteristics

245 This study comprised 452,131 individuals from the UK biobank cohort study. At baseline,  
246 4,078 (0.9%) individuals had type 1 diabetes and 23,682 (5.2%) had type 2 diabetes. A third  
247 group was comprised of individuals without diabetes (n = 424,371) with a median glycated

248 hemoglobin levels (HbA<sub>1c</sub>) level of 5.4%. A median of HbA<sub>1c</sub> level of 7.4% was observed in  
 249 individuals with type 1 diabetes and of 6.6% in those with type 2 diabetes. Individuals with  
 250 each type of diabetes were stratified into two groups: HbA<sub>1c</sub>  $\geq$  7.0%/53mmol/mol defined as  
 251 Inadequately Controlled Diabetes (ICD; n=10,682); representing 62.9% of those with type 1  
 252 diabetes (n = 2,565) and 34.3% of those with type 2 diabetes (n = 8,117); and those with HbA<sub>1c</sub>  
 253 <7.0%/53mmol/mol, defined as Adequately Controlled Diabetes (ACD; n =17,078). The  
 254 median follow-up time was 11.7 years period during which 20,414 incident fractures occurred.  
 255 The mean age of the participants was 58 years old (SD = 8) with similar proportion of men and  
 256 women (Table 1). In individuals with type 2 diabetes the mean disease duration was 5.5 years  
 257 (SD = 5.2) before inclusion at baseline. Estimated bone mineral density (eBMD), derived via  
 258 heel ultrasound, was measured in all individuals.

259

260 Table 1 – Participant baseline characteristics.

|                                   | Women            | Men              |
|-----------------------------------|------------------|------------------|
| N                                 | 247,712          | 204,419          |
| Age (years)                       | 58 (50-63)       | 58 (50-64)       |
| Height (cm)                       | 162 (158-167)    | 176 (171-180)    |
| Weight (kg)                       | 69 (61.6-78.4)   | 84 (76-93)       |
| eBMD (g/cm <sup>2</sup> )         | 0.51 (0.43-0.59) | 0.56 (0.48-0.64) |
| HbA <sub>1c</sub> (%)             | 5.4 (5.2-5.6)    | 5.4 (5.2-5.6)    |
| type 2 diabetes, n(%)             | 9,417 (3.8%)     | 14,265 (7.0%)    |
| type 1 diabetes, n(%)             | 1,752 (0.7%)     | 2,326 (1.1%)     |
| ACD (<7%/53mmol/mol), n(%)        | 7,057 (2.8%)     | 10,021(5.0%)     |
| ICD ( $\geq$ 7%/53mmol/mol), n(%) | 4,112 (1.7%)     | 6,570 (3.2%)     |
| Incident fractures, n(%)          | 13,636 (5.5%)    | 6,778 (3.3%)     |

|                              |                  |                   |                    |
|------------------------------|------------------|-------------------|--------------------|
| Moderate Activity (mins/day) |                  | 60 (30-66)        | 60 (30-66)         |
| Creatinine (umol/L)          |                  | 63.6 (57.3-71.2)  | 79.3 (72.2-87.8)   |
| CRP (mg/L)                   |                  | 1.47 (0.67-2.83)  | 1.34 (0.68-2.56)   |
| Deprivation*                 |                  | 15.2 (8.16-20.67) | 15.59 (8.27-21.35) |
| Menopause                    | Yes              | 150,586           | 0                  |
|                              | No               | 58,105            | 0                  |
|                              | Not sure (had a  |                   |                    |
|                              | hysterectomy)    | 28,215            | 0                  |
|                              | Not sure (other  |                   |                    |
|                              | reason)          | 10,565            | 0                  |
| Smoking                      | Current          | 22,129            | 25,368             |
|                              | Previous         | 78,245            | 78,755             |
|                              | Never            | 147,338           | 100,296            |
| Alcohol intake               | Daily            | 40,165            | 52,273             |
|                              | 3-4 times a week | 51,272            | 53,968             |
|                              | 1-2 a week       | 64,199            | 53,036             |
|                              | 1-3 a month      | 32,311            | 18,063             |
|                              | Occasionally     | 36,740            | 14,595             |
|                              | Never            | 23,025            | 12,484             |

261

262 Values depict medians and interquartile-ranges. ICD = inadequately controlled diabetes, ACD

263 = adequately controlled diabetes, CRP = C-reactive protein. \* Deprivation refers to the English

264 indices of deprivation. A composite measure of social economic status.

265

266

267 Glycemic control and estimated Bone Mineral Density

268 In individuals with type 1 diabetes, HbA<sub>1c</sub> levels were not significantly associated with eBMD  
269 (beta=0.01SD, 95%CI [-0.03, 0.02]) (supplementary table 5), although there was weak  
270 evidence suggesting a non-linear U-shaped relationship (F-test ANOVA p-value = 0.08)  
271 (Figure 1a). In type 1 diabetes, the ACD (beta=-0.04 SD, 95%CI [-0.08, 0.01]) and ICD (beta=-  
272 0.07 SD, 95%CI [-0.10, -0.02]) groups displayed lower eBMD with respect to HbA<sub>1c</sub> levels, in  
273 comparison to diabetes-free individuals (Figure 2a). In individuals with type 2 diabetes, a 1%  
274 (11mmol/mol) increase in HbA<sub>1c</sub> levels was associated with a 0.01 SD eBMD increase (95%CI  
275 [0.00-0.03]) (supplementary table 5). No evidence of a non-linear association between HbA<sub>1c</sub>  
276 and eBMD was observed for type 2 diabetes in sub-group analyses (F-test ANOVA p-value =  
277 0.72) (Figure 1b). In the type 2 diabetes analysis, stratification by glycemic control yielded  
278 concordant results with a positive association between HbA<sub>1c</sub> and eBMD in the ACD  
279 (beta=0.07SD, 95%CI [0.05, 0.08]) and ICD (beta=0.12SD, 95%CI [0.10, 0.14]) groups.  
280 Individuals with ICD had increased eBMD in comparison to those with ACD (beta=0.04,  
281 95%CI [0.01, 0.06]). In diabetes-free individuals, HbA<sub>1c</sub> levels were negatively associated to  
282 eBMD (beta=-0.05SD, 95%CI [-0.06, -0.04]). In addition, evidence for a non-linear association  
283 between HbA<sub>1c</sub> and eBMD was also observed (F-test ANOVA p-value = 0.02) (Figure1c).

284

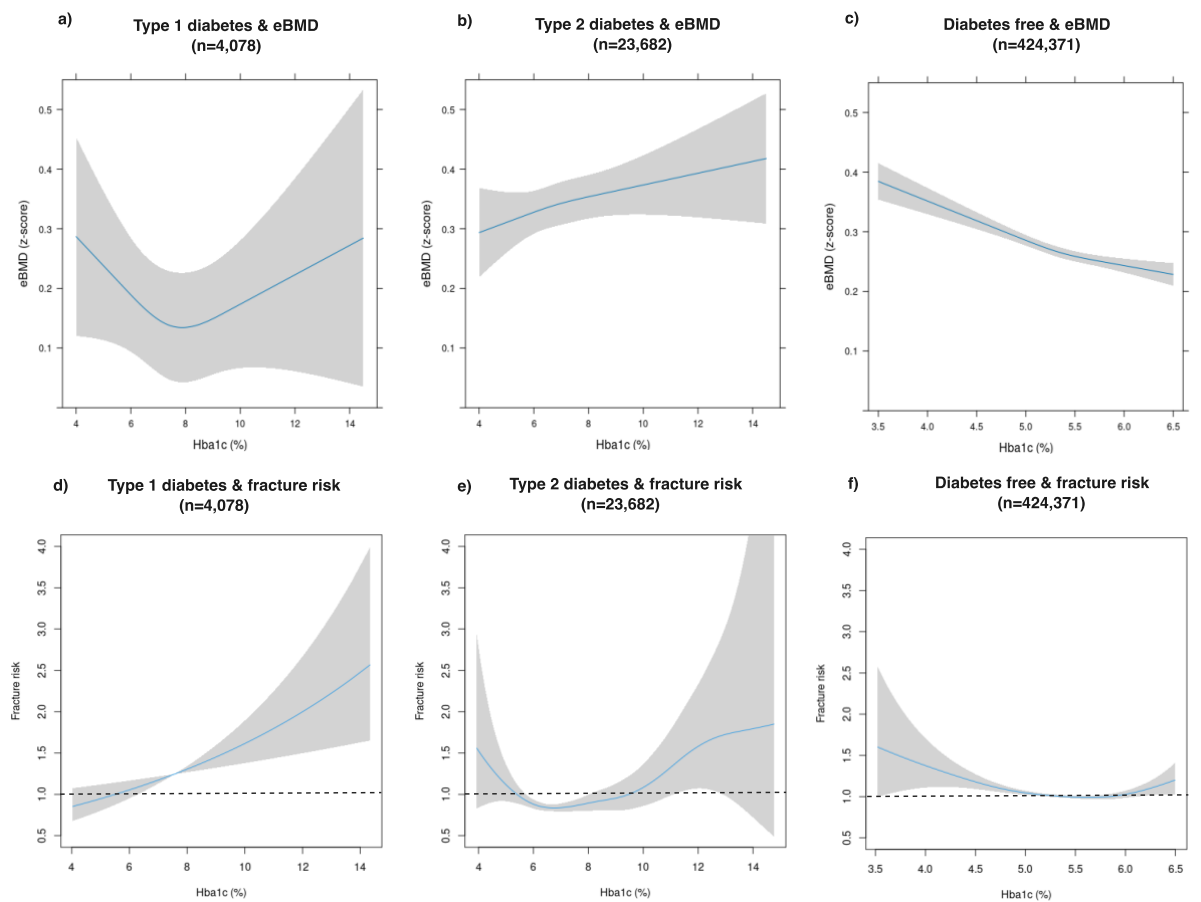
285 Glycemic control and fracture risk

286 A 1% (11mmol/mol) increase in HbA<sub>1c</sub> levels was associated with a 12% increase in fracture  
287 risk (HR: 1.12, 95%CI [1.05-1.19]) in individuals with type 1 diabetes (Figure 1d,  
288 supplementary table 3). Risk estimates were similar between men and women (supplementary  
289 table 4). In the type 1 diabetes sub-group analysis Cox regression Schoenfeld residual plots  
290 indicated a violation of the proportionality of hazards assumption for age as a covariate.  
291 However, upon conducting analyses stratified by age, with groups delineated as <38-50, <50-

292 55, <55-60, <60-65, and <65-81 years, we found that the hazard ratios adhered to the  
293 proportionality assumption (supplementary Figure 1). Subsequently, associations between  
294 glycemic control groups and fracture risk were evaluated. As compared to individuals without  
295 diabetes, those with type 1 diabetes had increased fracture risk in both the ACD (HR 2.26,  
296 95%CI [1.91, 2.69]) and ICD (HR 2.84, 95%CI [2.53, 3.19]) groups (Figure 2b). Further,  
297 individuals with ICD had a higher fracture risk than those with ACD (1.27, 95%CI [1.04,  
298 1.57]).

299 Fracture risk in individuals with type 2 diabetes showed evidence for a U-shaped non-linear  
300 association with increased risk (F-test ANOVA p-value = 0.002) observed at both low and high  
301 levels of HbA<sub>1c</sub> (Figure 2e). A similar non-linear association was observed in diabetes-free  
302 individuals (F-test ANOVA p-value < 0.001), although attenuated within healthy HbA<sub>1c</sub> levels  
303 (Figure 2f). Duration of diabetes was found to be associated to fracture risk (supplementary  
304 Figure 2). However, when included in the type 2 diabetes Cox model no modification of the  
305 effect of HbA<sub>1c</sub> on fracture risk was observed. Fracture risk was increased in type 2 diabetes  
306 ACD (1.19, 95%CI [1.11, 1.28]) and ICD (1.23, 95%CI [1.11, 1.36]) groups, in comparison to  
307 diabetes-free individuals (Figure 2b). However, individuals with ICD did not have an increased  
308 fracture risk in comparison to those with ACD (0.97, 95%CI [0.91, 1.16]). Dichotomizing on  
309 a HbA<sub>1c</sub> level of 9% produced similar observations (supplementary Figure 3, supplementary  
310 table 3). We further split individuals with type 2 diabetes and ACD with a HbA<sub>1c</sub> level of lower  
311 than 5.4% and labelled this group as hypoglycemic (*n*=1,401). Individuals within the  
312 hypoglycemic group had the greatest fracture risk (1.49, 95%CI [1.20, 1.86]) (supplementary  
313 Figure 4). Additionally, individuals with pre-diabetes did not present higher fracture risk (HR:  
314 0.99, 95%CI [0.96-1.03]; *n*=61,951) in comparison to controls.

315



316

317

318 Figure 1. Associations between HbA<sub>1c</sub> and eBMD/fracture risk by diabetes status and type.

319 Reference value was set to 5.4% (36mmol/mol) for all analysis groups. The shaded area

320 represents the 95% confidence interval. For eBMD plots the covariates were set to the mean

321 values. For example, for type 2 diabetes the covariates were: age=61, sex = male,

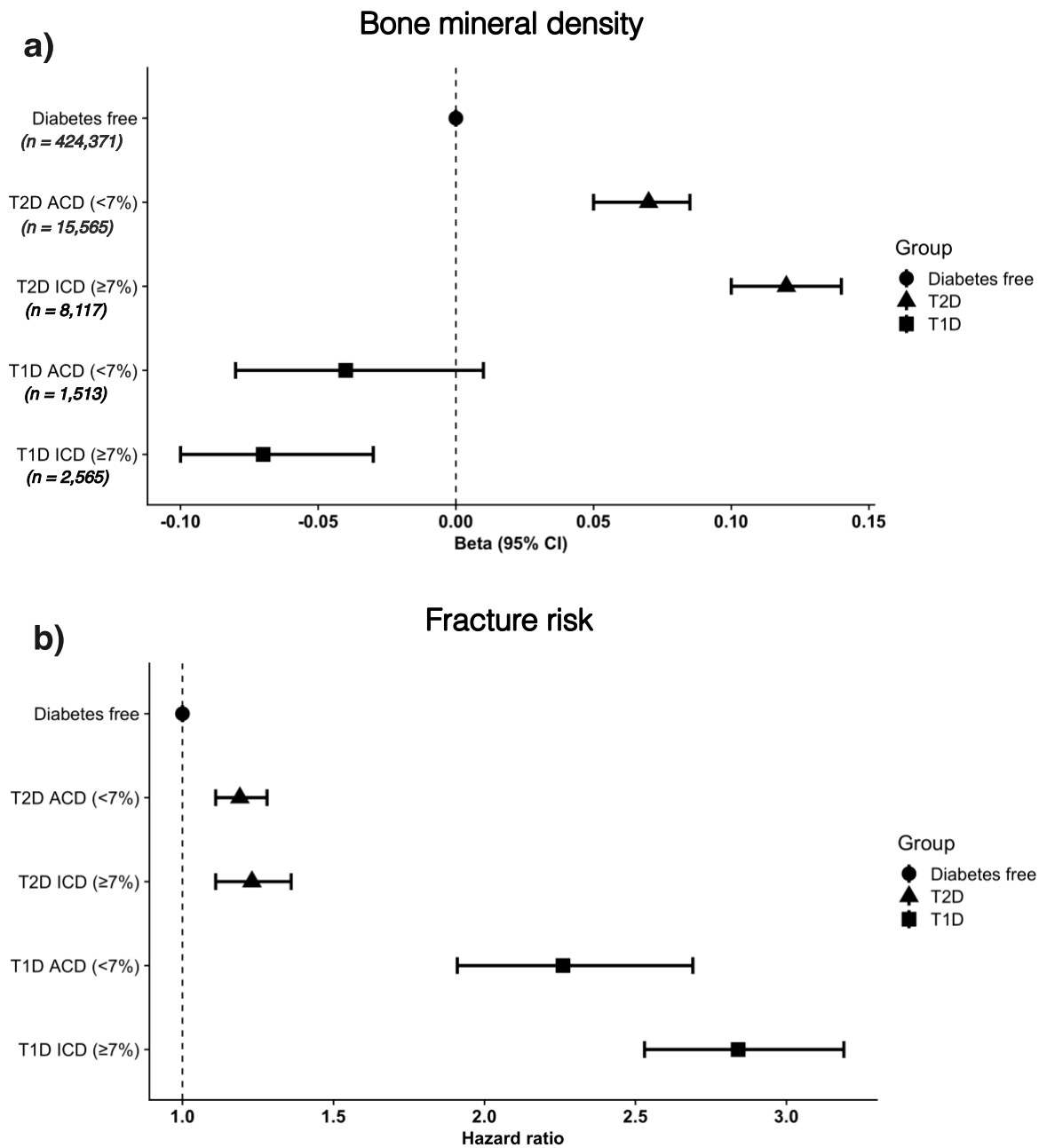
322 weight=87.9 height=169, alcohol intake=1-2 per week. Creatinine=72.18 CRP=2.1,

323 deprivation score=17.42, ethnicity = white European, duration of moderate activity=60, Non-

324 smoker.

325

326



327

328 Figure 2 – a) Forest plot depicting associations between eBMD and glycemic control groups  
 329 in comparison to controls. b) Forest plot depicting fracture risk ratios of glycemic control  
 330 groups in comparison to controls. ICD = inadequately controlled diabetes, ACD = adequately  
 331 controlled diabetes.

332

333 One-sample Mendelian randomization



334 One-sample Mendelian randomization analyses revealed no significant evidence of a linear or  
335 a non-linear association between genetically predicted HbA<sub>1c</sub> levels and fracture risk (power =  
336 0.94) (supplementary Figure 5, supplementary table 6 & 7). With regards to eBMD, we  
337 observed significant evidence of a negative linear association between genetically predicted  
338 HbA<sub>1c</sub> levels and eBMD, in diabetes-free (beta=-0.09, 95%CI [-0.12, -0.05]) individuals and  
339 in the total population (beta=-0.08, 95%CI [-0.11, -0.05]) (supplementary Figure 6a,  
340 supplementary table 8). We observed no significant difference in effect estimates when related  
341 individuals were removed (supplementary table 8). Non-linear Mendelian randomization  
342 revealed strong non-linear relationship between HbA<sub>1c</sub> and eBMD in the overall population.  
343 The quadratic test yielded a p-value of 0.0002. This was supported by evidence from the  
344 fractional polynomial test (p-value = 0.009). Additional, evidence suggested that best-fitting  
345 fractional polynomial of degree 2 fitted the data better than the best-fitting fractional  
346 polynomial of degree 1 (p-value = 0.02). The best-fitting fractional polynomial of degree 2 had  
347 powers 1 and -1. The Cochran Q test was also significant (p-value = 0.001). Graphs and strata  
348 estimates indicated a negative slope from HbA<sub>1c</sub> levels between 4 - 6.5%, after which the slope  
349 becomes positive (supplementary Figure 6b, supplementary table 9, 10, 11). This relationship  
350 was not evident in analyses stratified by disease status (supplementary table 9). Yet, these  
351 analyses were underpowered (see supplementary tables 6 & 8 for power calculations).

352

### 353 Discussion

354 We confirm an increased fracture risk in individuals with type 1 and type 2 diabetes from a  
355 relatively healthy young cohort [25]. Further, we observed a linear association between HbA<sub>1c</sub>  
356 and an increased fracture risk in individuals with type 1 diabetes and a non-linear association  
357 in individuals with type 2 diabetes. Individuals with type 1 diabetes and inadequately controlled  
358 diabetes (ICD, >7%/53mmol/mol) had greater fracture risk, than those with adequately

359 controlled diabetes (ACD, < 7%/53mmol/mol). In type 2 diabetes, fracture risk did not differ  
360 between ACD and ICD groups even after increasing the HbA<sub>1c</sub> dichotomization cut-off to 9%  
361 (75mmol/mol). This lack of difference in fracture risk was observed despite higher BMD levels  
362 in individuals with ICD. However, individuals with type 2 diabetes and a HbA<sub>1c</sub> level below  
363 5.4% (36mmol/mol) had the greatest fracture risk. In type 1 diabetes, we observed evidence  
364 that lowering HbA<sub>1c</sub> levels will reduce fracture risk. In type 2 diabetes, we observed evidence  
365 that both higher and lower HbA<sub>1c</sub> levels were associated with increased fracture risk. Our work  
366 brings to perspective the results of some previous studies [15, 26-29] indicating that individuals  
367 with type 2 diabetes and ACD present lower or similar fracture risk to that of diabetes-free  
368 individuals. Leveraging genetic information, we observed no association between genetically  
369 predicted higher HbA<sub>1c</sub> levels and fracture risk. However, we did observe evidence of a non-  
370 linear association between genetically-predicted HbA<sub>1c</sub> levels and eBMD in the total  
371 population. We observed a negative association between HbA<sub>1c</sub> and eBMD between 4.0 - 6.5%  
372 (20-48mmol/mol), after which the association to eBMD became positive. These results are  
373 concordant with our findings in the observational analysis and provide evidence of a causal  
374 non-linear relationship.

375 Previous studies have suggested that the increased fracture risk in type 2 diabetes is largely  
376 mediated by poor glycemic control [15, 26-29]. While individuals with type 2 diabetes and  
377 ICD showed a higher fracture risk compared to those without diabetes, the ACD group also  
378 had an increased fracture risk. No difference between ICD and ACD groups regarding fracture  
379 risk was observed, even after increasing the cut-off to 9% (75mmol/mol). Paradoxically, ICD  
380 was associated with higher eBMD, but this did not beget an expected decrease in fracture risk,  
381 a well-established phenomenon observed in individuals with type 2 diabetes [2]. Many of the  
382 studies reporting a significant relationship between poor glycemic control and fracture risk  
383 report varying cut-offs of HbA<sub>1c</sub> levels for defining adequate/inadequate glycemic control.

384 Clinicians often utilize cut-offs or threshold values to assist in the process of making decisions.  
385 However, their effectiveness is a subject of debate [30]. Cut-offs are problematic because they  
386 typically correspond to the specific population being studied and thus seldom produce  
387 consistent outcomes when applied to separate studies or datasets. Additionally, employing cut-  
388 offs to categorize a continuous predictor can potentially hinder accurate risk prediction [31].  
389 Our results describe a U-shaped relationship between HbA<sub>1c</sub> and fracture risk in individuals  
390 with type 2 diabetes and diabetes-free individuals. Similarly, a large retrospective study of  
391 652,901 elderly male veterans with type 2 diabetes observed that fracture risk was not increased  
392 in individuals with HbA<sub>1c</sub> > 8.5% (69mmol/mol), but was increased in individuals with HbA<sub>1c</sub>  
393 < 6.5% (48mmol/mol) [32]. Individuals with low levels of HbA<sub>1c</sub> can be considered as  
394 hypoglycemic [33]. Evidence suggests that hypoglycemia can lead to a loss of balance and an  
395 increase in falls, which can subsequently increase their fracture risk [34]. While this  
396 explanation seems plausible, it is important to state that the ADA suggests that HbA<sub>1c</sub> "does  
397 not provide a measure of glycemic variability or hypoglycemia" [31]. Alternatively, the  
398 observed association with increased fracture risk in individuals with very low HbA<sub>1c</sub> levels  
399 could be confounded by the use of glucose-lowering medication. However, this would not  
400 explain the increased risk in diabetes-free individuals. Individuals with anemia or other  
401 conditions shortening the lifespan of red blood cells (i.e., glucose-6-phosphate dehydrogenase  
402 deficiency, sickle-cell disease, etc.), may have underestimated HbA<sub>1c</sub> levels [35]. Considering  
403 the association between anemia and heightened risk of fractures [36], we incorporated  
404 measured hemoglobin concentrations into our statistical models to evaluate their impact. The  
405 inclusion of hemoglobin markedly enhanced the model's explanatory power, as evidenced by  
406 a significant F-test ANOVA (p-value < 2x10<sup>-16</sup>). Nevertheless, the estimated effects were  
407 not statistically different from those in the model that excluded hemoglobin concentrations  
408 (supplementary table 12). In type 1 diabetes, poor glycemic control was linearly associated

409 with increased fracture risk. No significant differences in eBMD were observed across  
410 glycemic control groups. This could be a consequence of non-linear effects (for which we  
411 observed weak evidence) and/or low statistical power. In line with our findings, a nested case-  
412 control study in the UK reported no differences in fracture risk in relation to glycemic control  
413 among individuals with type 2 diabetes. However, similar to our study, they did observe a  
414 difference in fracture risk for those with type 1 diabetes [37]. Other studies also report increased  
415 fracture risk in type 1 diabetes individuals with poor glycemic control [14, 38]. Nevertheless,  
416 these studies reported different magnitude of effects likely due to differences in underlying  
417 cohort populations. Differences in the relationship between HbA<sub>1c</sub> and bone fragility across the  
418 different types of diabetes are expected. This can be a consequence of the distinct pathological  
419 mechanisms, age of disease onset and duration [39, 40]. Diabetes disease duration has been  
420 shown to affect both fracture risk and glycemic control in type 1 diabetes and type 2 diabetes  
421 [14]. However, when including duration as a covariate in our analysis, we observed no  
422 modification of the association between HbA<sub>1c</sub> and fracture risk.

423 Our study has some limitations proper to observational studies. Despite the large sample size,  
424 the low prevalence of incident fractures in this population means statistical power is still limited  
425 for the one-sample Mendelian randomization analyses of fracture risk. Power calculations for  
426 diabetes-specific stratified Mendelian randomization analyses suggest that a sample size of  
427 218,351 individuals with diabetes is needed to achieve 80% power. We were unable to account  
428 fully for the consequences of diabetes disease duration and inadequate control in this study.  
429 Yet, controlling for diverse diabetes complications like diabetic retinopathy, kidney disease,  
430 and microvascular disease showed consistent effect estimates (supplementary table 12).  
431 Further, we employed HbA<sub>1c</sub> which was only measured at baseline and therefore was not  
432 reflective of long-term glycemic control. Additionally, the UK Biobank has been reported to  
433 suffer from 'healthy volunteer bias' [25]. As such, longitudinal studies with repeated

434 measurements of HbA<sub>1c</sub>, a detailed assessment of diabetes duration, and evaluation of DXA-  
435 derived BMD change over time will provide a more comprehensive understanding of these  
436 associations. Additionally, prospective studies should consider examining other factors such as  
437 glycemic variability, hypoglycemic events, and the effects of glucose-lowering medications on  
438 fracture risk.

439 We observed distinct relationships between HbA<sub>1c</sub> and bone fragility in type 1 diabetes and  
440 type 2 diabetes and postulate that this is due to the underlying differences in disease pathology,  
441 including the anabolic effect of insulin on bone. We advise against the use of hard cut-offs for  
442 defining adequate/inadequate glycemic control as these can vary across the populations being  
443 studied. We obtained evidence that lower HbA<sub>1c</sub> levels will reduce fracture risk in patients with  
444 type 1 diabetes. In individuals with type 2 diabetes, lowering HbA<sub>1c</sub> levels can mitigate the risk  
445 of fractures up to a threshold, beyond which the risk may begin to rise once more. Our study  
446 contributes to the growing body of evidence on the relationship between glycemic control,  
447 fractures, and bone health, highlighting the need for individualized management strategies in  
448 individuals with diabetes to optimize skeletal outcomes and reduce fracture risk. Furthermore,  
449 longitudinal studies with repeated measurements are needed to identify the key determinants  
450 of fracture risk in type 2 diabetes.

451

## 452 References

- 453 1. Holman, R.R., et al., 10-Year Follow-up of Intensive Glucose Control in Type 2  
454 Diabetes. *New England Journal of Medicine*, 2008. 359(15): p. 1577-1589.
- 455 2. Hofbauer, L.C., et al., Bone fragility in diabetes: novel concepts and clinical  
456 implications. *The Lancet Diabetes & Endocrinology*, 2022. 10(3): p. 207-220.
- 457 3. Vilaca, T., et al., The risk of hip and non-vertebral fractures in type 1 and type 2  
458 diabetes: A systematic review and meta-analysis update. *Bone*, 2020. 137: p. 115457.
- 459 4. Kvist, A.V., et al., Site-Specific Fracture Incidence Rates Among Patients With Type  
460 1 Diabetes, Type 2 Diabetes, or Without Diabetes in Denmark (1997–2017). *Diabetes  
461 Care*, 2023. 46(3): p. 633-642.
- 462 5. Johnell, O., The socioeconomic burden of fractures: Today and in the 21st century.  
463 *The American Journal of Medicine*, 1997. 103(2, Supplement 1): p. S20-S26.

- 464 6. Burge, R.T., et al., The cost of osteoporotic fractures in the UK: projections for 2000–  
465 2020. *Journal of Medical Economics*, 2001. 4(1-4): p. 51-62.
- 466 7. Ferrari, S.L., et al., Diagnosis and management of bone fragility in diabetes: an  
467 emerging challenge. *Osteoporos Int*, 2018. 29(12): p. 2585-2596.
- 468 8. Sudlow, C., et al., UK Biobank: An Open Access Resource for Identifying the Causes  
469 of a Wide Range of Complex Diseases of Middle and Old Age. *PLOS Medicine*,  
470 2015. 12(3): p. e1001779.
- 471 9. Bycroft, C., et al., The UK Biobank resource with deep phenotyping and genomic  
472 data. *Nature*, 2018. 562(7726): p. 203-209.
- 473 10. Association, A.D., 6. Glycemic Targets. *Diabetes Care*, 2014. 38(Supplement\_1): p.  
474 S33-S40.
- 475 11. American Diabetes, A., Diagnosis and Classification of Diabetes Mellitus. *Diabetes*  
476 *Care*, 2013. 37(Supplement\_1): p. S81-S90.
- 477 12. Morris, J.A., et al., An atlas of genetic influences on osteoporosis in humans and  
478 mice. *Nature Genetics*, 2019. 51(2): p. 258-266.
- 479 13. Zhang, Z., Multiple imputation with multivariate imputation by chained equation  
480 (MICE) package. *Ann Transl Med*, 2016. 4(2): p. 30.
- 481 14. Leanza, G., et al., Risk factors for fragility fractures in type 1 diabetes. *Bone*, 2019.  
482 125: p. 194-199.
- 483 15. Conway, B.N., et al., Glycemic control and fracture risk in elderly patients with  
484 diabetes. *Diabetes Research and Clinical Practice*, 2016. 115: p. 47-53.
- 485 16. Chen, J., et al., The trans-ancestral genomic architecture of glycemic traits. *Nature*  
486 *Genetics*, 2021. 53(6): p. 840-860.
- 487 17. Burgess, S., et al., Guidelines for performing Mendelian randomization investigations.  
488 *Wellcome Open Res*, 2019. 4: p. 186.
- 489 18. Burgess, S., et al., Guidelines for performing Mendelian randomization investigations  
490 [version 2; peer review: 2 approved]. *Wellcome Open Research*, 2020. 4(186).
- 491 19. Paul, S.C., M.P. Tom, and W. Frank, Estimating Structural Mean Models with  
492 Multiple Instrumental Variables Using the Generalised Method of Moments.  
493 *Statistical Science*, 2015. 30(1): p. 96-117.
- 494 20. Manichaikul, A., et al., Robust relationship inference in genome-wide association  
495 studies. *Bioinformatics*, 2010. 26(22): p. 2867-2873.
- 496 21. Brion, M.-J.A., K. Shakhbazov, and P.M. Visscher, Calculating statistical power in  
497 Mendelian randomization studies. *International Journal of Epidemiology*, 2013. 42(5):  
498 p. 1497-1501.
- 499 22. Haodong, T., et al., Relaxing parametric assumptions for non-linear Mendelian  
500 randomization using a doubly-ranked stratification method. *bioRxiv*, 2022: p.  
501 2022.06.28.497930.
- 502 23. Amy, M.M. and B. Stephen, Software Application Profile: SUMnlmr, an R package  
503 that facilitates flexible and reproducible non-linear Mendelian randomisation  
504 analyses. *medRxiv*, 2021: p. 2021.12.10.21267623.
- 505 24. Staley, J.R. and S. Burgess, Semiparametric methods for estimation of a nonlinear  
506 exposure-outcome relationship using instrumental variables with application to  
507 Mendelian randomization. *Genetic Epidemiology*, 2017. 41(4): p. 341-352.
- 508 25. Fry, A., et al., Comparison of Sociodemographic and Health-Related Characteristics  
509 of UK Biobank Participants With Those of the General Population. *American Journal*  
510 *of Epidemiology*, 2017. 186(9): p. 1026-1034.
- 511 26. Oei, L., et al., High Bone Mineral Density and Fracture Risk in Type 2 Diabetes as  
512 Skeletal Complications of Inadequate Glucose Control: The Rotterdam Study.  
513 *Diabetes Care*, 2013. 36(6): p. 1619-1628.

- 514 27. Wang, B., et al., Unmasking Fracture Risk in Type 2 Diabetes: The Association of  
515 Longitudinal Glycemic Hemoglobin Level and Medications. *The Journal of Clinical*  
516 *Endocrinology & Metabolism*, 2022. 107(4): p. e1390-e1401.
- 517 28. Li, C.-I., et al., Glycated Hemoglobin Level and Risk of Hip Fracture in Older People  
518 with Type 2 Diabetes: A Competing Risk Analysis of Taiwan Diabetes Cohort Study.  
519 *Journal of Bone and Mineral Research*, 2015. 30(7): p. 1338-1346.
- 520 29. Hidayat, K., et al., Influence of glycemic control and hypoglycemia on the risk of  
521 fracture in patients with diabetes mellitus: a systematic review and meta-analysis of  
522 observational studies. *Osteoporosis International*, 2021. 32(9): p. 1693-1704.
- 523 30. Altman, D.G., et al., Dangers of using "optimal" cutpoints in the evaluation of  
524 prognostic factors. *J Natl Cancer Inst*, 1994. 86(11): p. 829-35.
- 525 31. Douglas, G.A. and R. Patrick, The cost of dichotomising continuous variables. *BMJ*,  
526 2006. 332(7549): p. 1080.
- 527 32. Lee, R.H., et al., Glycemic Control and Insulin Treatment Alter Fracture Risk in  
528 Older Men With Type 2 Diabetes Mellitus. *J Bone Miner Res*, 2019. 34(11): p. 2045-  
529 2051.
- 530 33. Karges, B., et al., Hemoglobin A1c Levels and Risk of Severe Hypoglycemia in  
531 Children and Young Adults with Type 1 Diabetes from Germany and Austria: A  
532 Trend Analysis in a Cohort of 37,539 Patients between 1995 and 2012. *PLOS*  
533 *Medicine*, 2014. 11(10): p. e1001742.
- 534 34. Lee, A.K., et al., Severe Hypoglycemia and Risk of Falls in Type 2 Diabetes: The  
535 Atherosclerosis Risk in Communities (ARIC) Study. *Diabetes Care*, 2020. 43(9): p.  
536 2060-2065.
- 537 35. FORD, E.S., et al., Iron-deficiency anemia, non-iron-deficiency anemia and HbA1c  
538 among adults in the US\*. *Journal of Diabetes*, 2011. 3(1): p. 67-73.
- 539 36. English, E., et al., The effect of anaemia and abnormalities of erythrocyte indices on  
540 HbA1c analysis: a systematic review. *Diabetologia*, 2015. 58(7): p. 1409-21.
- 541 37. Vavanikunnel, J., et al., Association Between Glycemic Control and Risk of Fracture  
542 in Diabetic Patients: A Nested Case-Control Study. *The Journal of Clinical*  
543 *Endocrinology & Metabolism*, 2019. 104(5): p. 1645-1654.
- 544 38. Schwartz, A.V., et al., Risk factors for lower bone mineral density in older adults with  
545 type 1 diabetes: a cross-sectional study. *The Lancet Diabetes & Endocrinology*, 2022.  
546 10(7): p. 509-518.
- 547 39. DeFronzo, R.A., et al., Type 2 diabetes mellitus. *Nature Reviews Disease Primers*,  
548 2015. 1(1): p. 15019.
- 549 40. Katsarou, A., et al., Type 1 diabetes mellitus. *Nature Reviews Disease Primers*, 2017.  
550 3(1): p. 17016.
- 551

552 Keywords: Type 2 Diabetes, Type 1 Diabetes, Fractures, Bone mineral density, Glycemic  
553 control, Mendelian randomization, HbA<sub>1c</sub>.

554

555 List of abbreviations:

556 Genome-wide association study (GWAS), linkage disequilibrium (LD), type 2 diabetes (type  
557 2 diabetes), polygenic risk scores (PRS), Mendelian randomization (MR), single nucleotide

558 polymorphism (SNP), body mass index (BMI), Bone mineral density (BMD), Dual X-ray  
559 absorptiometry (DXA).

560

561 Declarations

562 Not applicable.

563

564 Ethics approval and consent to participate

565 All studies were conducted in full accordance with the ethical principles outlined in the

566 Declaration of Helsinki, as revised in 2013, including adherence to protocols approved by

567 their respective institutional ethics review committees and all participants provided written

568 informed consent.

569

570 Consent for publication

571 Not applicable.

572

573 Availability of data and materials

574 HbA1C summary statistics can be obtained from MAGIC consortium website

575 (<https://magicinvestigators.org/downloads/>). All data generated or analyzed during this study

576 are included in this published article [and its supplementary information files].

577

578 Competing interests

579 The authors declare that they have no competing interests.

580

581 Funding



582 This project has received funding from the European Union’s Horizon 2020 research and  
583 innovation program under the MARIE SKŁODOWSKA-CURIE grant agreement no. 860898.  
584 LO is funded by an Erasmus MC fellowship grant.

585

586 Authors' contributions

587 S.Ghatan, L.Oei, F.Rivadeneira, designed the study. S.Ghatan performed the analysis.

588 S.Ghatan, L.Oei, F.Rivadeneira, C.Medina-Gomez, F.Koromani, and K.trajanoska drafted the  
589 manuscript. All authors contributed to the interpretation of data and critical revision of the  
590 manuscript. All authors read and approved the final version of the manuscript.

591

592 Acknowledgments

593 John Kemp for providing assistance in coding and quality control of the estimated bone mineral  
594 density data. This research has been conducted using the UK Biobank Resource (accession ID:  
595 67864). We express our gratitude to the study participants, whose participation made this work  
596 possible, and to the numerous colleagues who contributed to the collection, phenotypic  
597 characterization of clinical samples, as well as genotyping and analysis of GWAS data.  
598 S.Ghatan is the guarantor of this work and, as such, had full access to all the data in the study  
599 and takes responsibility for the integrity of the data and the accuracy of the data analysis.

600

601 Originality and Prior Publication

602 Parts of the results from this manuscript have been presented previously at the European  
603 Calcified Tissue Society (ECTS) 2023 congress in Liverpool, England on 16<sup>th</sup> of April.