

1 **Progress Update for the Multisite Optical Genome Mapping Evaluation and Validation Study: Prenatal**
2 **Applications**

3
4 Brynn Levy*¹, Jie Liu*², M Anwar Iqbal*³, Barbara DuPont⁴, Nikhil Sahajpal⁴, Monique Ho³, Jingwei Yu⁵,
5 Sam J. Brody⁶, Heather Mason-Suares⁶, Mythily Ganapathi¹, Aleksandar Rajkovic⁵, Teresa A. Smolarek²,
6 Reha M. Toydemir⁷, Peter Bui⁷, Ravindra Kolhe^{8†}, Roger E. Stevenson^{9†}

7
8 *Co-first

9 † co-corresponding

10 **Affiliations**

- 11 1. Columbia University Irving Medical Center, New York, NY, USA
- 12 2. Division of Human Genetics, Cincinnati Children’s Hospital Medical Center; Department of
13 Pediatrics, University of Cincinnati, Cincinnati, OH, USA
- 14 3. University of Rochester Medical Center, Rochester, NY, USA
- 15 4. Greenwood Genetic Center, Greenwood, SC, USA
- 16 5. University of California San Francisco, San Francisco, CA, USA
- 17 6. Brigham and Women’s Hospital, and Harvard Medical School, Boston, MA, USA
- 18 7. Quest Diagnostics Nichols Institute, San Juan Capistrano, CA, USA
- 19 8. Department of Pathology, Medical College of Georgia, Augusta University, Augusta, GA, USA
- 20 9. Equanimitas, Greenwood, SC, USA

21
22 **Corresponding Authors:**

23 Roger E. Stevenson, M.D.

24 Ravindra Kolhe, Ph.D.

25

26 Number of pages: 19

27 Tables: 1

28 Figures: 3

29

30 **FUNDING:** Funding for the study was provided in part by Bionano Genomics (San Diego, CA).

31

32 **CONFLICTS OF INTEREST**

33 None : BL, JL, MAI, BD, NS, MH, JY, SJB, HMS, MG, AR, TAS, RMT, PB

34 RK has received honoraria and/or travel funding and/or research support from Illumina, Bionano, Agena,

35 PGDx; RES is a consultant of Bionano.

36

37 **Abstract**

38 Optical genome mapping (OGM) is an emerging technology with great potential for prenatal
39 diagnosis. OGM can identify and resolve all types of balanced and unbalanced cytogenomic abnormalities
40 in a single test, which are typically assessed by multiple standard of care (SOC) methods including
41 karyotyping, fluorescence in situ hybridization and chromosomal microarray.

42 To assess OGM's viability as an alternative to conventional SOC testing, a comprehensive clinical
43 research study was conducted across multiple sites, operators, and instruments to evaluate its accuracy
44 and clinical utility. This report provides an update for the phase 2 results of the ongoing multisite
45 evaluation and validation study evaluating OGM for prenatal applications. In phase 1, 123 prenatal cases
46 were assessed by OGM, and in phase 2, 219 retrospective and prospective prenatal cases have been
47 evaluated. For 71% of cases, at least two SOC tests were performed. The study found that OGM had an
48 overall accuracy of 99.6% and positive predictive value of 100% when compared to all cytogenetic SOC
49 results.

50 With its standardized workflow, cost-effectiveness, and high-resolution cytogenomic analysis,
51 OGM shows great promise as an alternative technology that uses a single assay to consolidate the multiple
52 SOC tests usually used for prenatal cytogenetic diagnosis.

53

54 **Introduction**

55 Prenatal diagnostic testing during pregnancy typically involves analyzing amniotic fluid, chorionic
56 villus samples (CVS), or fetal cord blood. These tests are recommended when there is a positive or unclear
57 result from non-invasive prenatal testing (NIPT), positive maternal serum screen, abnormal ultrasound
58 findings or increased genetic risk due to a family history of a chromosome abnormality. While
59 chromosomal microarray is recommended as first-tier prenatal diagnostic testing to detect pathogenic
60 copy number variants (CNVs), it is still common practice to use multiple methodologies to confirm a final
61 diagnosis. This approach, however, is costly, time-consuming, and labor-intensive.¹⁻⁴

62 When considering prenatal diagnostic options, it's essential to weigh the strengths and limitations
63 of each technology. In practice, a combination of tests is often used, either simultaneously or sequentially.
64 For instance, to quickly obtain results after an abnormal NIPT, a fluorescence in situ hybridization (FISH)
65 panel and karyotyping is employed for confirmation. If NIPT is negative, FISH with karyotyping and CMA
66 may be pursued. If a positive FISH or CMA result is obtained, karyotyping/targeted FISH may still be
67 necessary to determine the specific nature of the anomaly, particularly in cases where there may be
68 concerns about potential reproductive risks, such as suspected translocations where a parent could be a
69 carrier.¹

70 Optical genome mapping (OGM) represents an emerging cytogenomic technology that provides
71 a cost-effective, comprehensive assessment of various pathogenic cytogenomic variants, including
72 structural variations (SVs) and CNVs at the resolution comparable to CMA.⁵⁻⁷ OGM operates by
73 fluorescently labeling ultra-high molecular weight DNA (UHMW DNA) at specific 6-base-pair motif sites
74 (CTTAAG), which are distributed roughly every 6,000 base pairs across the genome. These labeled
75 molecules are then compared to a reference genome to identify genomic abnormalities, ranging from as
76 small as 500 base pairs to as large as entire chromosomal aneuploidies or triploidy.⁷⁻⁹

77 Recent studies have demonstrated a high concordance between OGM and traditional cytogenetic
78 techniques in both constitutional prenatal and postnatal applications.⁷⁻¹⁰ The main objective of this study
79 is to conduct a multisite assessment of OGM's performance, robustness, and reproducibility in prenatal
80 samples when compared to standard of care (SOC) technologies. Phase 1 of the study, as detailed in
81 Stevenson et al., 2022, drew from 200 data points sourced from 123 distinct prenatal cases.¹¹ Building
82 upon this groundwork, this report describes the advancements made in phase 2 of the study,
83 encompassing 219 unique retrospective and prospective cases out of a total of 500 unique cases planned
84 for the entire study. This expanded dataset allows for a more comprehensive evidence-based
85 understanding of the OGM's progression towards integration as a cytogenomic diagnostic technique.

86

87 **Methods**

88 This double-blinded study implemented standardized analysis and interpretation workflow for
89 the classification of SVs detected by OGM across multiple sites, to determine the variability in SV
90 reporting, which is a common phenomenon observed among the participating sites while reporting CNVs
91 from CMA.

92 **IRB disclosures:**

93 IRB-00007527 – University of Rochester Medical Center Office for Human Subject Protection

94 IRB-AAAT9083 – Columbia University Irving Medical Center, New York, NY, USA

95 IRB-2022-0865 – Cincinnati Children's Hospital Institutional Review Board, Cincinnati, OH, USA

96 IRB-20212956 – Bionano Genomics Inc., San Diego, CA, USA

97 IRB-22-37290 – University of California San Francisco, San Francisco, CA, USA

98 IRB-A-#00000150 (HAC IRB # 611298) - Medical College of Georgia, Augusta University, Augusta, GA, USA

99 ***Cohort design & Case Selection***

100 Samples were given anonymous study identification (ID) numbers (i.e.: BNGOSS-xxxx).
101 Retrospective and prospective remnant clinical samples were obtained from individuals who underwent
102 NIPT. Cultured amniocyte or chorionic villus sampling cells were then used for extraction of UHMW DNA
103 for the subsequent OGM workflow. Due to technical limitations of OGM, cases with pathogenic single-
104 nucleotide variants (SNVs) and small insertions and deletions (Indels) identified by sequencing,
105 Robertsonian translocations, balanced centromeric translocations, and mosaicism below 20% cellular
106 fraction were excluded from this study.⁸

107 This cohort consists of 219 de-identified independent cases (Figure 1) with various clinical
108 indications including abnormal ultrasound findings, positive noninvasive prenatal testing (NIPT), advanced
109 maternal age, family history, etc. Cases were assessed by one or more conventional cytogenetic tests,
110 including CMA, FISH and karyotype (Figure 2A) and enriched for a variety of known chromosomal
111 aberrations (Figure 1 and 2B). CMA platforms included Agilent Technologies (Santa Clara, CA, USA) 180K
112 Oligonucleotide + SNP Array CGH, Illumina (San Diego, CA, USA) CytoSNP-850Kv1.2 BeadChip, and
113 Affymetrix (Santa Clara, CA, USA) Cytoscan HD.

114 ***Sample preparation and processing***

115 Preparation and processing of samples were similar to the initial phase of the study.¹¹ Sample
116 contributing sites prepared aliquots of cultured and cryopreserved amniocytes or cultured cells from
117 chorionic villus samples (CVS). Cells cultured in flasks were detached with trypsin-EDTA, rinsed into conical
118 tubes and pelleted, counted, and cryopreserved in freezing medium with 5% DMSO targeting 1 – 1.5
119 million viable cells per sample. Anonymized samples were sent to a central accessioning site and then
120 distributed to sites enrolled as OGM data collection labs.

121 Ultra-high molecular weight (UHMW) DNA was isolated using Bionano Prep® SP or SP-G2 kits and
122 labeled using Bionano Prep® DLS or DLS-G2 kits (Bionano, San Diego, CA, USA). Briefly, cryopreserved
123 samples were first thawed and counted. Subsequently, samples were subjected to a series of steps
124 including washing, pelleting from the supernatant, resuspension, and digestion using Proteinase K, RNase
125 A, and lysis buffer. The resulting DNA was then precipitated with isopropanol and bound to a nanobind
126 magnetic disk. After several washing steps, DNA was eluted into a buffer overnight. Solubilized DNA was
127 measured for its concentration. 750 ng DNA was then labeled at a 6-base pair motif (CTTAAG) utilizing a
128 Direct Label and Stain assay. The labeled DNA solution underwent quantification for quality control.
129 Finally, it was loaded onto Saphyr chips for imaging. In the imaging stage, fluorescently labeled DNA
130 molecules were sequentially visualized as they traversed nanochannel on a Saphyr instrument. The target
131 for data collection aimed to reach 800 gigabases (Gbp) for each sample.

132 ***Assay quality control***

133 The evaluation of UHMW DNA quality includes observation of viscosity followed by assessing the
134 DNA concentration and homogeneity (target range 36-150 ng/μl and CV for triplicate measurements <
135 30%). The first pass success rate, which includes DNA isolation, labeling, and Saphyr chip run, was
136 determined by the data output meeting predefined Quality Control (QC) criteria during the initial assay
137 run. The final assay success rate was assessed based on the data output meeting these QC criteria over
138 one or more rounds of the assay.

139 A Molecule Quality Report (MQR) was generated for each dataset, which included three essential
140 metrics for sample QC evaluation: Molecule N50 (with a criterion of ≥150 kbp), map rate, and effective
141 coverage. Molecule N50 was used to assess the size distribution of DNA molecules with lengths greater
142 than or equal to 150 kbp. The map rate was calculated as the proportion of DNA molecules that
143 successfully aligned to the GRCh38 reference genome. Effective coverage was calculated based on the
144 depth of coverage of molecules aligned to the same reference genome. Analytical QC targets were defined

145 to achieve: an N50 of ≥ 230 kbp for molecules ≥ 150 kbp, a map rate of $\geq 70\%$, and an effective coverage of
146 the genome (GRCh38) of ≥ 160 times.

147 Post-analytical quality control performance was evaluated by determining the sex of each sample
148 and measuring performance at stable regions of the genome. The EnFocus™ Fragile X Analysis pipeline
149 was used to infer the sample's sex and establish pass/fail criteria for post-analytical quality metrics (Figure
150 3). Stable regions, one from each autosome, were identified as regions with minimal variation in control
151 populations. The absolute percent differences between the OGM map and the reference genome should
152 not exceed 1.2% based on expected sizing errors. The pipeline required that at least 90% of the stable
153 regions meet this threshold to pass the quality control criteria.

154 ***Data analysis***

155 Genome-wide SV analysis in this study was conducted using Bionano Solve™ software version 3.7
156 and Bionano Access™ software version 1.7. Structural variants (SVs) were identified based on the
157 alignment between the de novo assembled genome maps and the GRCh38 reference. Fractional copy
158 number (CN) analyses were conducted by aligning molecules and labels against GRCh38. Raw label
159 coverage from a sample was normalized, segmented, and baseline CN states were estimated by
160 calculating the mode of coverage for all labels. In cases where chromosome Y molecules were present,
161 baseline coverage in sex chromosomes was halved. With the baseline established, CN states of segmented
162 genomic intervals were evaluated for significant increases or decreases compared to the baseline.
163 Aneuploidies were determined by comparing normalized coverage between chromosomes, and the
164 absence of heterozygosity (AOH) was identified when segments with SV homozygosity exceeded expected
165 values, specifically when larger than 25 Mbp.

166 ***SV interpretation***

167 The analysis of variants was conducted using Bionano Access™ software version 1.7. These
168 variants went through a two-step filtering process. First, they were subjected to a default set of baseline

169 quality control filters, which included the recommended confidence and size thresholds from Bionano
170 Access v1.7. Subsequently, laboratory analysts applied a defined set of filters to prioritize the most
171 relevant variants. The criteria for the filters were as follows: variants with a population frequency
172 exceeding 1% in an OGM-specific controls database (over 300 phenotypically healthy individuals), variants
173 that did not overlap with genes in the GRCh38 reference within a 3-kilobase pair (kbp) range, and deletions
174 and insertions smaller than 1.5 kbp were excluded from consideration. Conversely, SVs and CNVs that
175 overlapped with masked regions of GRCh38 were included in the analysis. Following these filtration steps,
176 laboratory analysts curated a list of variants and then specifically searched for translocation and intra-
177 fusion (large-scale >5Mbp on same chromosome) breakpoints with the GRCh38 gene overlap criterion
178 removed.

179 Variants that successfully passed the filtration steps underwent analysis and classification based
180 on the guidelines established by the American College of Medical Genetics and Genomics.¹² Classification
181 categories included pathogenic, likely pathogenic, variant of uncertain significance (VUS), likely benign
182 and benign. This classification process was performed in a blinded manner within Bionano Access by a
183 laboratory analyst and a certified laboratory director. Additionally, large-scale abnormalities such as
184 aneuploidies, triploidy, or regions of absence of heterozygosity (AOH) that were not integrated into the
185 curation and classification process described above were included in the final summary.

186 ***Concordance assessment***

187 Assessment for concordance between OGM data and the SOC results was carried out by a small
188 analyst team that was not part of the blinded clinical interpretation process. The evaluation of variant
189 concordance was conducted through a combination of methods, including software-based calling, visual
190 inspection, and manual curation. For cases without a genetic diagnosis, technical concordance was
191 assessed by checking whether the samples exhibited any significant events that should have been
192 detectable by the respective negative SOC method.

193 Analytical performance metrics were assessed by using 123 aberrations that were reported in SOC
194 testing (Table 1). Analytical sensitivity, specificity, and positive predictive value (PPV), negative predictive
195 value (NPV), and accuracy were evaluated. Cases without SOC reported findings were used for false-
196 positive and true-negative calculations.

197

198 **Results**

199 ***Cohort description and SOC testing***

200 Two hundred and nineteen cases underwent OGM workflow and data analysis. 57 cases were
201 retrospective cases and 162 cases were prospective cases. Forty-nine retrospective cases were cultured
202 amniocytes and eight were CVS cultured cells, while 122 prospective cases were cultured amniocytes and
203 40 were CVS cultured cells (Figure 1). Indications for prenatal diagnosis are categorized as advanced
204 maternal age ($n=9$), abnormal screening result ($n=45$), structural anomalies on ultrasonography ($n=141$),
205 and other indications ($n=24$). Overall, there were 82 cases with reported pathogenic findings, one case
206 with reported likely pathogenic finding, 19 cases with reported VUS, and 117 cases without a reported
207 finding. More details for SOC reported variant classification and breakdown of clinical indications are
208 shown in Figure 1.

209 Because there are several prenatal diagnostic options available and each method has its strengths
210 and limitations, multiple tests were often ordered concurrently or consecutively in the clinical settings. In
211 this cohort, more than one conventional SOC test was performed in 71.2% of the cases (156/219). There
212 were 19.2% (42/219) of cases with FISH and CMA, 17.4% (38/219) of cases with karyotyping and FISH,
213 7.8% (17/219) with karyotyping and CMA, and 26.9% (59/219) with all three of these SOC methods (Figure
214 2). Breakdown of the variant type reported by SOC tests is shown in Figure 2B and more details are
215 provided in the Supplementary Table 1. There were 123 SOC reported findings, and the majority were

216 aneuploidy (44%), followed by deletion (32%), duplication (12%), AOH (6%), translocation (3%), triploidy
217 (2%), and ring chromosome (1%).

218 ***Data quality control and SV summary***

219 Overall data quality of this cohort exceeded the baseline. Average DNA output was 750 Gbp,
220 with the average molecule size (N50 \geq 150 kbp) at 269 kbp. The average map rate was at 85.6%, and 95%
221 of the cases had a map rate greater than 70%. The average effective coverage was at 201.2X and there
222 were 79% of cases having coverage greater than 160X (Figure 3A).

223 Post-analytical quality control revealed that there were 115 male and 104 female samples,
224 which was consistent with information gathered during sample intake. For the stable region check, 218
225 out of 219 samples passed the quality check (Figure 3B). Only one case, Case-076, failed stable region
226 QC check. After reviewing the overall data quality of Case-076, this sample was determined to be
227 analyzable and subsequently proceeded to further analysis.

228 On average, 4,279 SVs were initially identified in each case in the whole genome analysis. After
229 applying filtering criteria described in the Methods, an average of 11 SVs were found in each case which
230 underwent classification by analysts and directors based on ACMG guidelines (Figure 3C).

231 ***Concordance and Analytical Performance Metric Evaluation***

232 OGM data were compared to SOC test results to determine concordance, and this resulted in
233 100% concordance from 219 clinical cases in this cohort (Supplementary Table). One female case (Case-
234 036) was determined to be partially concordant. Based on karyotyping
235 (45,X[8]/46,X,r(X)(p11.23q21.3)[7]) and CMA (arr[GRCh38] Xp22.33p11.3(10,814-46,826,640)x1,
236 Xp11.3q21.31(46,837,624-89,823,554)x1~2, Xq21.31q28(89,922,674-156,007,082)x1) findings, this case
237 had monosomy of chromosome X and a mosaic ring chromosome X. Monosomy of chromosome X was
238 successfully detected by OGM; however, the mosaic ring chromosome X was not detected in this case.

239 To investigate the possibility of losing mosaic ring chromosome X during cell culturing of amniocytes,
240 extracted UHMW DNA was sent for orthogonal CMA test for confirmation, which is still pending.

241 Analytical performance metric was evaluated using 123 SOC reported variants (82 pathogenic,
242 one likely pathogenic and 19 VUS) from 102 individuals (Supplementary Table 1). Overall, 122 out of 123
243 variants were detected by OGM and the mosaic ring chromosome X is the only variant missed by OGM.
244 Although the presence of the mosaic ring chromosome X in UHMW DNA of Case-036 is not yet
245 confirmed, it was counted as false negative in this analysis.

246 Therefore, OGM have sensitivity of 99.2%, specificity of 100%, positive predictive value (PPV) of
247 100%, negative predictive value (NPV) of 95.5% and accuracy of 99.6% (Table 1). Performance broken
248 down by cytogenomic variant type is detailed in Table 1.

249

250 **Discussion**

251 Global medical associations, including the American College of Obstetrics and Gynecology (ACOG),
252 the International Society of Ultrasound in Obstetrics and Gynecology (ISUOG), and the American College
253 of Medical Genetics and Genomics, recommend prenatal genetic screening for all pregnant individuals,
254 regardless of gestational or maternal age.¹³⁻¹⁵ In instances where NIPT yields a positive result or when
255 there's an inconclusive outcome due to technological constraints, further diagnostic testing is
256 recommended to validate the screening findings. Moreover, pregnancies exhibiting abnormal ultrasound
257 findings indicating fetal defects are advised to undergo further diagnostic invasive procedures, such as
258 CVS, amniocentesis, or periumbilical blood sampling.¹⁶ Historically, confirmatory diagnostic procedures
259 utilized conventional cytogenetic methods like karyotyping and FISH.¹⁷⁻¹⁸ However, advancing into the
260 2000s, the introduction of CMA using amniocytes or CVS emerged as the preferred initial diagnostic tool
261 recommended by ACOG and ISUOG for pregnancies considered high-risk for fetal genetic disease and

262 those with abnormal ultrasound results.¹⁹⁻²⁰ This shift marked a more comprehensive approach to genetic
263 profiling, providing enhanced insights into suspected fetal genetic anomalies.

264 OGM has the capability to identify a wide range of chromosomal anomalies, spanning
265 aneuploidies, sex chromosome variations, microdeletions/microduplications, CNVs, balanced
266 chromosomal occurrences, and complex chromosomal rearrangements. Compared to conventional
267 cytogenetic techniques, OGM offers a higher resolution in detecting these aberrations. As a next-
268 generation cytogenomic tool, OGM holds promising potential in prenatal care and management due to
269 its enhanced capacity for comprehensive chromosomal analysis.⁷

270 This ongoing multisite study focuses on assessing and validating OGM analysis in comparison to
271 established SOC methodologies in prenatal assessment. Phase 1 findings from this study revealed robust
272 results, demonstrating high concordance, accurate variant detection, and reproducibility across multiple
273 participating sites.¹¹ This report outlines the advancements and developments observed in the ongoing
274 phase 2 of the study. The focus remains on evaluating the efficacy and comparative merits of OGM against
275 established SOC practices in prenatal diagnosis.

276 The phase 2 cohort comprises 219 retrospective and prospective cases (Figure 1). Within this
277 cohort, a substantial portion has undergone multiple conventional SOC tests. Notably, 71% of these cases
278 have been subjected to more than one conventional SOC examination, while 27% have undergone the
279 complete trio of SOC tests, including karyotyping, FISH, and CMA. This highlights the strength and
280 limitation of each SOC test; consequently, these tests are frequently employed either in tandem or
281 simultaneously in prenatal clinical settings.

282 The data collected throughout phase 2 of the study exceeded the initial QC baseline (Figure 3A).
283 All cases yielded analyzable data, including a case (Case-076) that initially did not meet the stable region
284 QC criteria (Figure 3B). The subsequent variant calling resulted in 100% concordance between OGM and

285 the SOC methodologies. Among the 219 cases assessed, 218 demonstrated complete concordance
286 between OGM and SOC, while a female case (Case-036) exhibited partial concordance in the study. In
287 Case-036, karyotyping and CMA revealed monosomy of chromosome X and a mosaic ring chromosome X
288 (estimated 40-50% cellular fraction). While OGM successfully detected the monosomy of chromosome X,
289 it did not identify the presence of the mosaic ring chromosome X in this case. Considering the potential
290 for the loss of mosaic ring chromosome X during the cell culturing process of amniocytes, extracted
291 UHMW DNA was sent for orthogonal CMA testing to confirm the presence of the ring chromosome X.
292 However, the result is still pending during the writing of this report. This highlights the robustness and
293 reliability of data collection, as well as high concordance in comparison to SOC.

294 Evaluation of analytical performance metrics was conducted by utilizing 123 variants reported by
295 SOC. OGM demonstrated high performance metrics: 99.2% sensitivity, 100% specificity, 100% PPV, 95.5%
296 NPV, and an overall accuracy of 99.6% (Table 1). These results are consistent with the performance
297 observed in the earlier phase 1 study.¹¹ The consistent high performance metrics demonstrate OGM's
298 reliability and its ability to effectively detect abnormalities identified by SOC testing of prenatal samples.

299

300 **Conclusions:**

301 The study demonstrated the potential of OGM as a high-resolution cytogenomic assay suitable
302 for application after an abnormal NIPT screen or in high-risk pregnancies with abnormal ultrasound
303 results. Multiple studies, including this one highlight OGM's performance and its distinctive capability to
304 identify all categories of clinically relevant genome-wide structural variations (SVs) at high resolution. This
305 update on phase 2 progress contributes to the expanding evidence base, emphasizing OGM's promise as
306 a stand-alone and promising alternative assay in prenatal diagnosis, distinct from traditional cytogenetic
307 methods.

308 To date, a total of 342 unique cases (419 data points) in this ongoing multisite prenatal clinical
309 study have been reported through this publication and Stevenson et al., 2022.¹¹ The goal is to
310 comprehensively document and report findings from the entire cohort, expected to exceed 500 unique
311 cases during the year 2024.

312

313 **Acknowledgements:**

314 The authors wish to acknowledge Bionano clinical affairs team: Alka Chaubey, Alex Hastie, Mike Gallagher,
315 James Yu, Ben Clifford, Natacha Diaz-Meyer, Stephanie Burke, Andy Pang, Jen Hauenstein, Alex Chitsazan,
316 Joey Estabrook, Kelsea Chang, Shuk Shukor, and Ileana Carrera for support in training and data
317 management; and Bionano Laboratories: Trilochan Sahoo for support in discussions.

318

319 **Table 1.** Analytical Performance Metric Evaluation

Performance criteria	Overall Variants (n = 123)	Aneuploidy (n = 54)	Deletion (n = 39)	Duplication/gains (n = 15)	AOH (n = 8)	Translocation (n = 4)	Triploidy (n = 2)	Ring chromosome (n = 1)
Sensitivity, %	99.2	100	100	100	100	100	100	NA*
Specificity, %	100	100	100	100	100	100	100	NA*
PPV/precision, %	100	100	100	100	100	100	100	NA*
NPV, %	95.5	100	100	100	100	100	100	NA*
Accuracy, %	99.6	100	100	100	100	100	100	NA*

320 Sensitivity/positive percentage agreement = true positive/(true positive + false negative).

321 Specificity/negative percentage agreement = true negative/(true negative + false positive).

322 PPV = true positive/(true positive + false positive).

323 NPV = true negative/(true negative + false negative).

324 Accuracy = true positive + true negative/all results.

325 123 SOC reported variants from 102 individuals were used for true positive and false negative; 117 cases

326 without SOC reported findings were used for false positive and true negative calculations.

327 PPV, positive predictive value; NPV, negative predictive value; SV, structural variation; NA, not available.

328 * The mosaic ring chromosome X in Case-036 is not called by OGM.

329

330 **References**

- 331 1. Levy, B., & Stosic, M. (2019). Traditional prenatal diagnosis: past to present. *Methods in molecular*
332 *biology*, **1885**, 3–22.
- 333 2. Levy, B., & Burnside, R. D. (2019). Are all chromosome microarrays the same? What clinicians need
334 to know. *Prenatal diagnosis*, **39**(3), 157–164.
- 335 3. Wapner, R. J., Martin, C. L., Levy, B., Ballif, B. C., Eng, C. M., Zachary, J. M., Savage, M., Platt, L. D.,
336 Saltzman, D., Grobman, W. A., Klugman, S., Scholl, T., Simpson, J. L., McCall, K., Aggarwal, V. S.,
337 Bunke, B., Nahum, O., Patel, A., Lamb, A. N., Thom, E. A., Beaudet, A. L., Ledbetter, D. H., Shaffer, L.
338 G., & Jackson, L. (2012). Chromosomal microarray versus karyotyping for prenatal diagnosis. *The*
339 *New England journal of medicine*, **367**(23), 2175–2184.
- 340 4. Srebniak, M. I., Joosten, M., Knapen, M. F. C. M., Arends, L. R., Polak, M., van Veen, S., Go, A. T. J. I., &
341 Van Opstal, D. (2018). Frequency of submicroscopic chromosomal aberrations in pregnancies
342 without increased risk for structural chromosomal aberrations: systematic review and meta-analysis.
343 *Ultrasound in obstetrics & gynecology*, **51**(4), 445–452.
- 344 5. Barseghyan, H., Tang, W., Wang, R. T., Almalvez, M., Segura, E., Bramble, M. S., Lipson, A., Douine, E.
345 D., Lee, H., Délot, E. C., Nelson, S. F., & Vilain, E. (2017). Next-generation mapping: a novel approach
346 for detection of pathogenic structural variants with a potential utility in clinical diagnosis. *Genome*
347 *medicine*, **9**(1), 90.
- 348 6. Chan, S., Lam, E., Saghbini, M., Bocklandt, S., Hastie, A., Cao, H., Holmlin, E., & Borodkin, M. (2018).
349 Structural variation detection and analysis using Bionano Optical Mapping. *Methods in molecular*
350 *biology*, **1833**, 193–203.
- 351 7. Sahajpal, N. S., Barseghyan, H., Kolhe, R., Hastie, A., & Chaubey, A. (2021). Optical genome mapping
352 as a next-generation cytogenomic tool for detection of structural and copy number variations for
353 prenatal genomic analyses. *Genes*, **12**(3), 398.

- 354 8. Iqbal, M. A., Broeckel, U., Levy, B., Skinner, S., Sahajpal, N. S., Rodriguez, V., Stence, A., Awayda, K.,
355 Scharer, G., Skinner, C., Stevenson, R., Bossler, A., Nagy, P. L., & Kolhe, R. (2023). Multisite assessment
356 of optical genome mapping for analysis of structural variants in constitutional postnatal cases. *The*
357 *Journal of molecular diagnostics*, **25**(3), 175–188.
- 358 9. Mantere, T., Neveling, K., Pebrel-Richard, C., Benoist, M., van der Zande, G., Kater-Baats, E., Baatout,
359 I., van Beek, R., Yammine, T., Oorsprong, M., Hsoumi, F., Olde-Weghuis, D., Majdali, W., Vermeulen,
360 S., Pauper, M., Lebbar, A., Stevens-Kroef, M., Sanlaville, D., Dupont, J. M., Smeets, D., et al. (2021).
361 Optical genome mapping enables constitutional chromosomal aberration detection. *American*
362 *journal of human genetics*, **108**(8), 1409–1422.
- 363 10. Sahajpal, N. S., Mondal, A. K., Fee, T., Hilton, B., Layman, L., Hastie, A. R., Chaubey, A., DuPont, B. R.,
364 & Kolhe, R. (2023). Clinical validation and diagnostic utility of optical genome mapping in prenatal
365 diagnostic testing. *The Journal of molecular diagnostics*, **25**(4), 234–246.
- 366 11. Stevenson, R. E., Liu, J., Iqbal, A., DuPont, B., Sahajpal, N., Ho, M., Yu, J. W., Brody, S. J., Ganapathi,
367 M., Rajkovic, A., Smolarek, T., Boyar, F., Bui, P., Dubuc, A. M., Kolhe, R., & Levy, B. (2022). Multisite
368 evaluation and validation of Optical Genome Mapping for prenatal genetic testing. *medRxiv*
369 **2022.12.19.22283552**.
- 370 12. Riggs, E. R., Andersen, E. F., Cherry, A. M., Kantarci, S., Kearney, H., Patel, A., Raca, G., Ritter, D. I.,
371 South, S. T., Thorland, E. C., Pineda-Alvarez, D., Aradhya, S., & Martin, C. L. (2020). Technical
372 standards for the interpretation and reporting of constitutional copy-number variants: a joint
373 consensus recommendation of the American College of Medical Genetics and Genomics (ACMG) and
374 the Clinical Genome Resource (ClinGen). *Genetics in medicine*, **22**(2), 245–257.
- 375 13. Rose, N. C., Kaimal, A. J., Dugoff, L., Norton, M. E. & American College of Obstetricians and
376 Gynecologists. (2020). Screening for fetal chromosomal abnormalities: ACOG practice bulletin,
377 number 226. *Obstetrics and gynecology*, **136**(4), e48–e69.

- 378 14. Salomon, L. J., Alfirevic, Z., Audibert, F., Kagan, K. O., Paladini, D., Yeo, G., Raine-Fenning, N., & ISUOG
379 Clinical Standards Committee (2014). ISUOG consensus statement on the impact of non-invasive
380 prenatal testing (NIPT) on prenatal ultrasound practice. *Ultrasound in obstetrics & gynecology*, **44**(1),
381 122–123.
- 382 15. Gregg, A. R., Skotko, B. G., Benkendorf, J. L., Monaghan, K. G., Bajaj, K., Best, R. G., Klugman, S., &
383 Watson, M. S. (2016). Noninvasive prenatal screening for fetal aneuploidy, 2016 update: a position
384 statement of the American College of Medical Genetics and Genomics. *Genetics in medicine*, **18**(10),
385 1056–1065.
- 386 16. Carlson, L. M., & Vora, N. L. (2017). Prenatal diagnosis: screening and diagnostic tools. *Obstetrics and*
387 *gynecology clinics of North America*, **44**(2), 245–256.
- 388 17. Holzgreve, W., Tercanli, S., Schneider, H. P., & Miny, P. (1992). Prenatal karyotyping: when, how and
389 whom? *Ultrasound in obstetrics & gynecology*, **2**(1), 64–69.
- 390 18. Pergament, E., Chen, P. X., Thangavelu, M., & Fiddler, M. (2000). The clinical application of interphase
391 FISH in prenatal diagnosis. *Prenatal diagnosis*, **20**(3), 215–220.
- 392 19. Vora, N. L. R. S. Ralston, S. J. Dugoff, L., & Kuller J. A. (2016). Microarrays and next-generation
393 sequencing technology: the use of advanced genetic diagnostic tools in obstetrics and gynecology.
394 *Obstetrics and gynecology*, **128**(6), 1462–1463.
- 395 20. Hillman, S. C., McMullan, D. J., Hall, G., Togneri, F. S., James, N., Maher, E. J., Meller, C. H., Williams,
396 D., Wapner, R. J., Maher, E. R., & Kilby, M. D. (2013). Use of prenatal chromosomal microarray:
397 prospective cohort study and systematic review and meta-analysis. *Ultrasound in obstetrics &*
398 *gynecology*, **41**(6), 610–620.

399 **Figure Legends**

400 **Figure 1.** Cohort characteristics, clinical indications, and SOC reported variants. P/LP - pathogenic or
401 likely pathogenic; VUS – variant of uncertain significance.

402 **Figure 2.** SOC tests and reported variant type. **A.** Distribution of cases having one or more SOC test
403 performed. **B.** Variant types reported by SOC test.

404 **Figure 3.** OGM quality control metrics **A.** OGM quality control metrics based on molecules ≥ 150 kbp. **B.**
405 Post-analytical quality control metrics of gender and stable region check. **C.** SV analysis summary for the
406 baseline average before filtering and after standardized filtering.

Figure 3.

A

Quality Control Metrics (N = 219 data points)							
N50 (kbp)			DNA output (Gbp)	Map Rate (%)		Effective Coverage (X)	
Average	>230 kbp	>200 kbp	Average	Average	>70%	Average	>160X
269 kbp	86%	98%	750 Gbp	85.6%	95%	201.2X	79%
*metrics are based on ≥150 kbp filtering							

B

Post-analytical Quality Control (N = 219 data points)	
Sex (Male - Female)	115 - 104
Stable Region Pass	218/219

C

SV Analysis Summary (N = 219 data points)										
	Deletions	Insertions	Duplications	Inversion Breakpoints	Interchromosomal Translocation Breakpoints	Intrachromosomal Fusion Breakpoints	CNV Gain	CNV Loss	aneuploidy	AOH
Pre-filter	1296	2828	66	53	0.60	4.9	12.6	17.7	0.35	0.16
Post-filter	4.37	2.54	1.08	0.20	0.05	0.1	0.9	1.2	0.35	0.16

Figure 1.

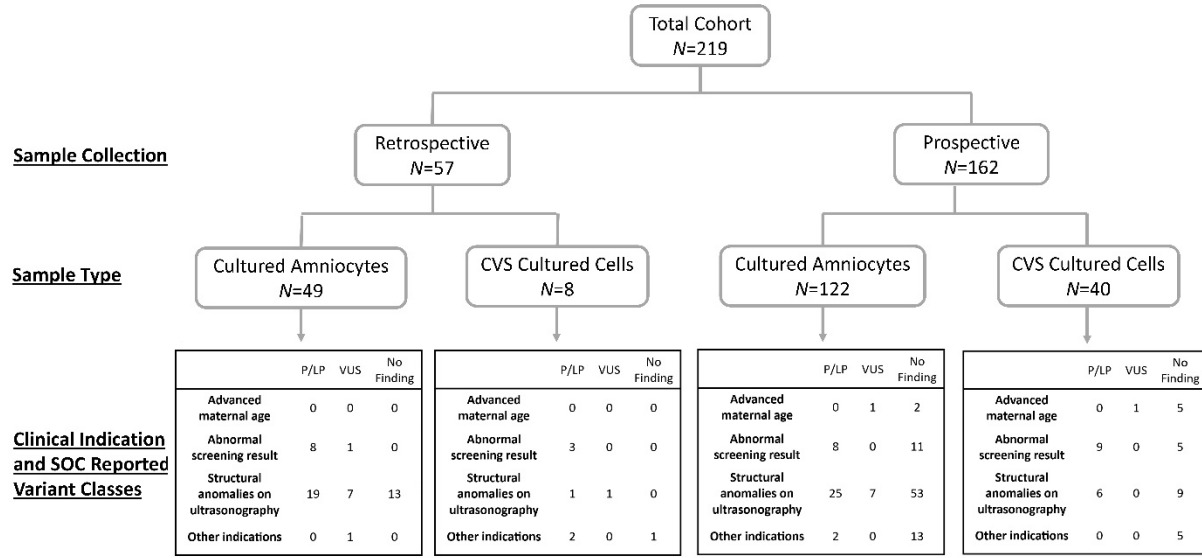


Figure 2.

