

1 **Antibodies to *Aedes aegypti* D7L salivary proteins as a new**
2 **serological tool to estimate human exposure to *Aedes* mosquitoes.**

3

4 Sophana Chea^{1†}, Laura Willen^{2†}, Sreynik Nhek¹, Piseth Ly¹, Kristina Tang², James
5 Oristian², Roberto Salas-Carrillo², Aiyana Ponce², Paola Carolina Valenzuela Leon²,
6 Dara Kong¹, Sokna Ly², Ratanak Sath², Chanthap Lon^{1,2}, Rithea Leang^{3,4}, Rekol
7 Huy³, Christina Yek^{1,2}, Jesus G. Valenzuela², Eric Calvo², Jessica E. Manning^{1,2},
8 Fabiano Oliveira^{1,2*}.

9

10 ¹ International Center of Excellence in Research, National Institute of Allergy and
11 Infectious Diseases, Phnom Penh, Cambodia

12 ² Laboratory of Malaria and Vector Research, National Institute of Allergy and
13 Infectious Diseases, National Institutes of Health, Bethesda, MD, USA

14 ³ National Center for Parasitology, Entomology, and Malaria Control, Ministry of
15 Health, Phnom Penh, Cambodia

16 ⁴ National Dengue Control Program, Ministry of Health, Phnom Penh, Cambodia

17

18

19 Sophana Chea^{1†} and Laura Willen^{2†}: These authors contributed equally to this work
20 and share first authorship.

21

22

23 * **Correspondence:** Fabiano Oliveira, loliveira@nih.gov

24

25

26 **Keywords:** *Aedes*; *Aedes aegypti*; exposure marker, ELISA, dengue, biomarker,
27 Cambodia; mosquito saliva.

28

29

30

31 1 Abstract

32

33 **Introduction:** *Aedes spp.* are the most prolific mosquito vectors in the world. Found
34 on every continent, they can effectively transmit various arboviruses, including the
35 dengue virus which continues to cause outbreaks worldwide and is spreading into
36 previously non-endemic areas. The lack of widely available dengue vaccines
37 accentuates the importance of targeted vector control strategies to reduce the
38 dengue burden. High-throughput sensitive tools to estimate human-mosquito contact
39 and evaluate vector control interventions are lacking. We propose a novel serological
40 tool that allows rapid screening of large human cohorts for exposure to potentially
41 infectious mosquitoes and effective targeting of vector control.

42 **Methods:** We tested 563 serum samples from a longitudinal pediatric cohort study
43 previously conducted in Cambodia. Children enrolled in the study were dengue-
44 naïve at baseline and were followed biannually for dengue incidence for two years.
45 We used Western blotting and enzyme-linked immunosorbent assays to identify the
46 most immunogenic *Aedes aegypti* salivary proteins and measure total anti-*Ae.*
47 *Aegypti* IgG.

48 **Results:** We found a strong correlation ($r_s=0.86$) between the combined IgG
49 responses against AeD7L1 and AeD7L2 recombinant proteins and those to whole
50 salivary gland homogenate. We observed seasonal fluctuations of AeD7L1+2 IgG
51 responses, corresponding to *Aedes spp.* abundance in the region, and no cross-
52 reactivity with *Culex quinquefasciatus* and *Anopheles dirus* mosquitoes. The
53 baseline median AeD7L1+2 IgG responses for young children were higher in those
54 who developed asymptomatic dengue versus those who developed symptomatic
55 dengue.

56 **Conclusion:** The IgG response against AeD7L1+2 recombinant proteins is a highly
57 sensitive and *Aedes* specific marker of human exposure to *Aedes* bites that can
58 facilitate standardization of future serosurveys and epidemiological studies by its
59 ability to provide a robust estimation of human-mosquito contact in a high-throughput
60 fashion.

61 **2 Introduction**

62

63 Dengue is the most prevalent arboviral disease worldwide, with the greatest burden
64 in tropical and sub-tropical regions (1, 2). Half the world's population is at risk of
65 contracting dengue, including 1.3 billion people living in ten dengue-endemic
66 countries of the South-East Asian region (3). From 2015 to 2019, dengue cases in
67 the region increased by 46% culminating in a major epidemic in 2019 that led to the
68 highest number of annual global cases (>5.2 million) ever to be reported in the same
69 year (4).

70 Currently, existing vaccines remain selectively available; thus, prevention and control
71 of dengue heavily rely on effective vector control measures targeted towards *Aedes*
72 mosquitoes. The efficacy of these vector control methods is currently evaluated
73 using expensive and labor-intensive insect trapping that may not reflect true human
74 exposure to mosquito bites. An alternative approach exploits the human humoral
75 immune responses against the vector's salivary components that are injected during
76 a bloodmeal. Salivary proteins of several hematophagous arthropods were
77 previously identified and shown to facilitate blood feeding by limiting the host's
78 vasoconstriction, inhibiting coagulation processes, and suppressing pain receptors
79 (5). Saliva of *Aedes aegypti* female mosquitoes contains about 100 abundant
80 salivary proteins (6, 7) that are implicated in enhanced viral dissemination and
81 increased pathogenesis of viral infections (8).

82 IgG responses against whole salivary gland homogenate of *Aedes* mosquitoes
83 (SGH) correlate with the intensity of mosquito bite exposure (9), and were previously
84 proposed as a marker of human exposure to *Aedes* mosquitoes (10-12). Since then,
85 researchers established a repertoire of promising recombinant salivary antigens to
86 bypass the potential cross-reactivity of SGH with other vector species and to
87 facilitate the use of biomarkers of *Aedes* exposure in large-scale cohort studies (13),
88 with the Nterm-34kDa peptide biomarker being the most studied (13, 14).

89 Interestingly, none of these studies assessed how well the antibody (Ab) responses
90 against *Ae. aegypti* recombinant proteins correlate with those against whole saliva or
91 SGH, the reference standard for *Aedes* exposure. Ab responses against whole SGH
92 and several recombinant *Ae. aegypti* salivary proteins have also been implicated in
93 associations with disease outcome(15, 16). IgG reactivity to *Ae. aegypti* salivary

94 proteins were higher in DENV positive patients than in uninfected patients (9, 15,
95 17). Conversely, Ab responses against the *Ae. aegypti* D7 proteins, involved in the
96 scavenging of biogenic amines and cysteinyl leukotrienes and, thus, potentially
97 involved in preventing the host's inflammatory response, were higher in DENV
98 positive and febrile patients as opposed to non-febrile patients. In the present study,
99 we identified salivary biomarkers of *Ae. aegypti* exposure that can replace the use of
100 mosquito saliva or SGH and subsequently investigate if a relationship exists between
101 these surrogate biomarkers of exposure and clinical outcomes in dengue infected
102 patients in a longitudinal pediatric cohort in Cambodia (18).

103

104

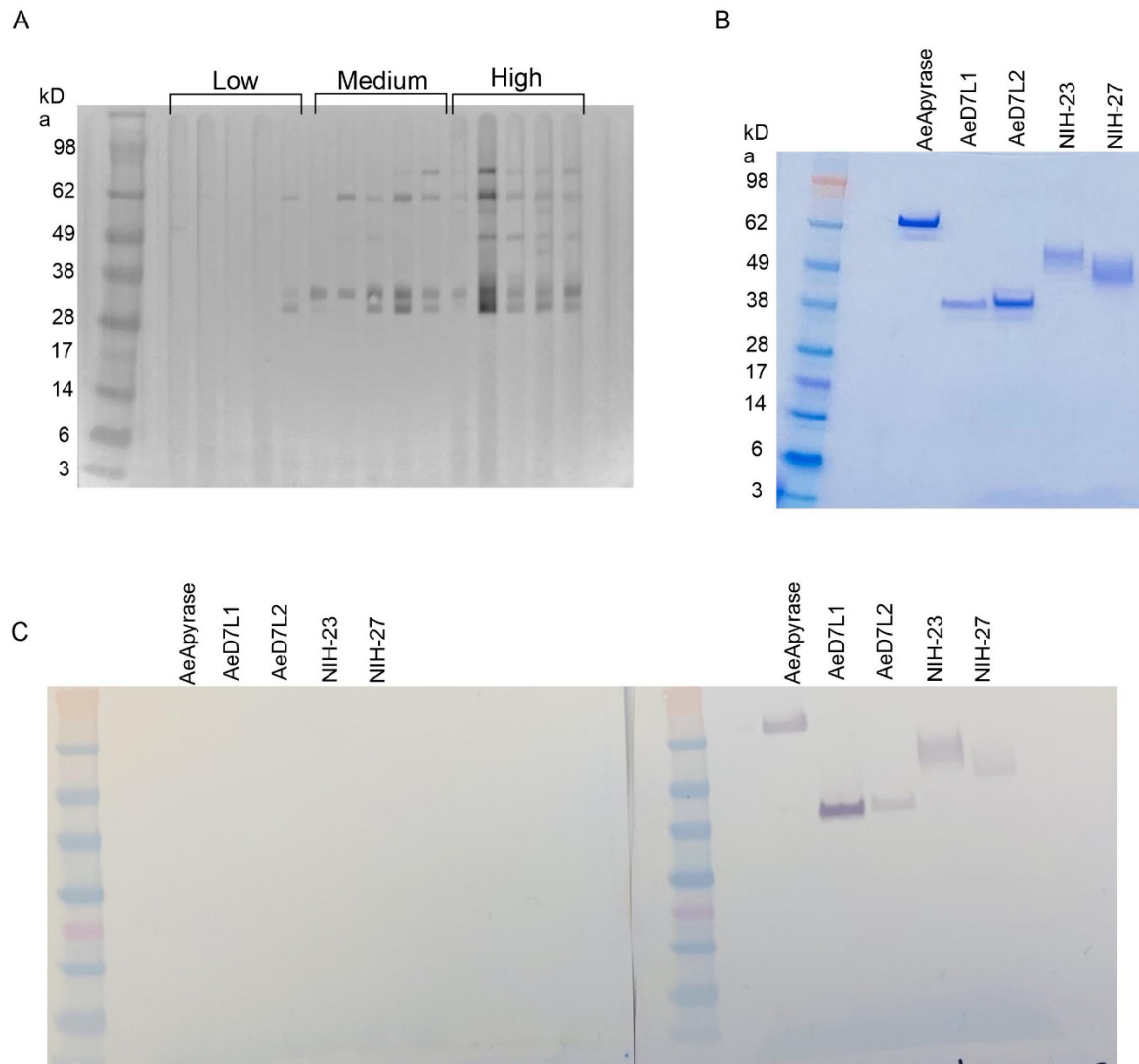
105 **3 Results**

106

107 **3.1 Identification of immunogenic *Aedes aegypti* salivary proteins in a 108 Cambodian pediatric population.**

109

110 We used Western blot to measure the recognition of *Ae. aegypti* salivary proteins by
111 IgG present in the serum of our study population. We observed sera reactivity in the
112 *Ae. aegypti* SGH molecular weight range of 28 kDa to 98 kDa (Fig 1A). Cambodian
113 sera reactivity increased on par with anti-SGH ELISA OD values (Fig. 1A,
114 Supplementary Fig. 1). Using a digital detection system, we identified reactive
115 protein bands with approximate molecular weights of 80 kDa, 62 kDa, 35 kDa and 30
116 kDa and accounting for 72 %, 88 %, 85 %, and 82 % of the total seropositivity,
117 respectively. We next produced and screened 18 *Ae. aegypti* recombinant salivary
118 proteins by Western blot using a pool of *Ae. aegypti* SGH reactive sera from our
119 cohort (n=10) (Fig. 1C). We identified five of the 18 *Ae. aegypti* recombinant salivary
120 proteins as reactive, corresponding to AeApyrase, AeD7L1, AeD7L2, NIH-23, and
121 NIH-27 (Table 1, Supplementary Fig. 2). We scaled up production of these five *Ae.*
122 *aegypti* salivary recombinant proteins, verified their purity by Coomassie G-250
123 staining (Fig. 1B) and tested their reactivity to the pooled sera (Fig. 1C). Importantly,
124 sera from healthy U.S. blood donors who were non-reactive on an *Ae. aegypti* SGH
125 ELISA, also did not react to any of the tested recombinant proteins (Fig. 1C).



126
127 **Figure 1. Sera from children living in dengue-endemic areas in Kampong Speu**
128 **province, Cambodia recognize native SGH from *Ae. aegypti*.** (A) Western blot displaying
129 reactivity of Cambodian sera samples organized by increasing *Ae. aegypti* SGH ELISA OD
130 values. (B) Coomassie blue stained SDS-PAGE of the five selected recombinant proteins
131 (AeD7L2, AeD7L1, NIH-27, NIH-23, and AeApyrase). (C) Western blot with AeD7L2,
132 AeD7L1, NIH-27, NIH-23, and AeApyrase against a pool of negative (left) and positive (right)
133 sera.

134

135

	Protein name	Molecular weight (kda)	Accession number	Sera reactivity	Annotation
1	NIH435-36	20.05	ABF18174	No	Putative 14.5 kDa salivary protein (19)
2	NIH435-8	20.6	AAL76029	No	Putative C-type lectin (20)
3	NIH435-4	21	ABF18046	No	Proline rich salivary secreted peptide (19)
4	NIH435-29	21.16	AAL76036	No	Putative 18.2 kDa secreted protein (20)
5	AeD7S	21.25	ABF18082	No	Putative odorant binding protein (19)
6	Aegyptin	30	CAX36783	No	Binds collagen and inhibits platelet aggregation and adhesion (21)
7	NIH435-32	36.4	ABF18025	No	Angiopoietin-like protein variant, Fibrinogen-related domains (FREds) (19)
8	NIH435-27	36.7	AAL76019	Yes	Putative sticky protein, Angiopoietin related protein, Fibrinogen-related domains (20)
9	AeD7L1	37	AAL16049	Yes	Binds biogenic amines and eicosanoids (22)
10	AeD7L2	37	AAA29347	Yes	Binds biogenic amines and eicosanoids (22)
11	NIH435-31	38.72	ABF18017	No	Putative 34 kDa family secreted salivary protein (19)
12	NIH435-24	39.13	XP_001657055	No	Uncharacterized protein (23)
13	NIH435-16	20.05	XP_001651977	No	Probable uridine nucleosidase 1, Nucleoside hydrolases (23)
14	NIH435-23	20.6	XP_001656512	Yes	Serine protease inhibitors (Serpin) family, clotting inhibitor (24, 25)
15	NIH435-19	21	EAT46066	No	Serine protease inhibitors (Serpin) family, clotting inhibitor (24)
16	NIH435-6	21.16	ABF18028	No	Salivary anti FXa serpin (19)
17	NIH435-21	21.25	XP_001663083	No	Cysteine-rich secretory proteins, antigen 5, pathogenesis-related 1 proteins (23)
18	AeApyrase	61.36	AAC37218.1	Yes	Inhibiting ADP-dependent platelet aggregation (26)

136

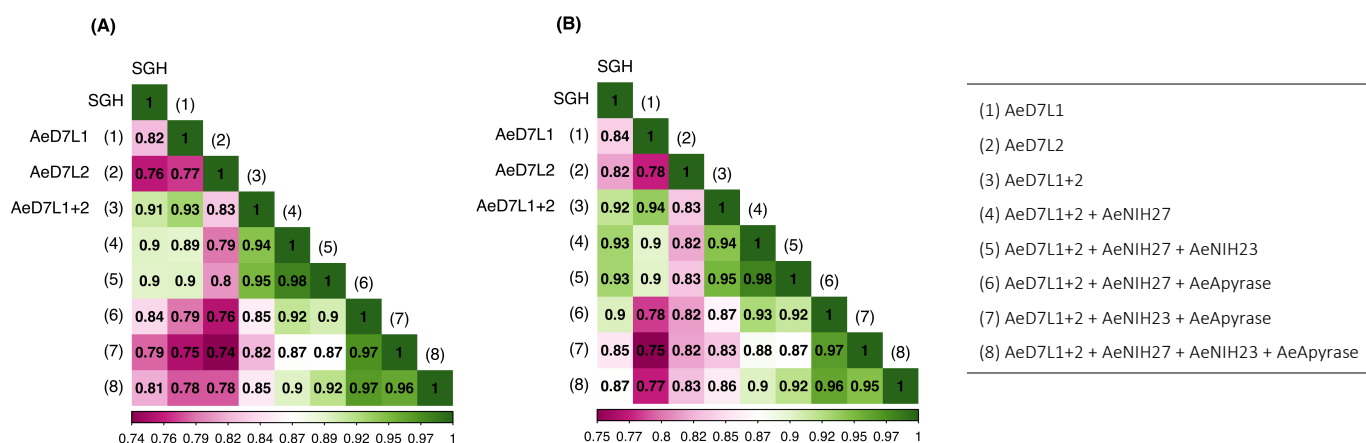
137 **Table 1.** Name, molecular weight, accession number, serum reactivity, and function of the
 138 17 recombinant proteins used for the immunoreactivity screening against *Ae. aegypti*
 139 salivary gland homogenate.

140

141
142
143
144
145
146
147
148
149
150
151
152
153
154
155
156
157

3.2 The combined antibody responses against *Aedes aegypti* D7L1 and D7L2 salivary proteins is a valid surrogate for antibodies against *Ae. aegypti* SGH.

We tested a random subset of 18 Cambodian children sampled at seven consecutive visits during the dry and wet seasons from 2018 to 2021 on an ELISA assay for Abs against the selected recombinant proteins or against SGH (Fig. 2A). We achieved a high correlation between SGH and AeD7L1+2 ($r = 0.91$, $r_s = 0.92$), AeD7L1 ($r = 0.82$, $r_s = 0.82$), and AeD7L2 ($r = 0.76$, $r_s = 0.82$), alone or when combined with AeApyrase, AeNIH-27 or AeNIH-23 (Fig. 2). No significant correlation was observed between Abs against SGH and a negative control antigen (Bovine Serum Albumin, BSA) ($r = 0.17$ ($P = 0.05$), $r_s = 0.15$ ($P = 0.1$)). We selected the combination of AeD7L1+2 as the optimal and most parsimonious candidate for further analyses. All P values and confidence intervals are displayed in Supplementary Table 1.

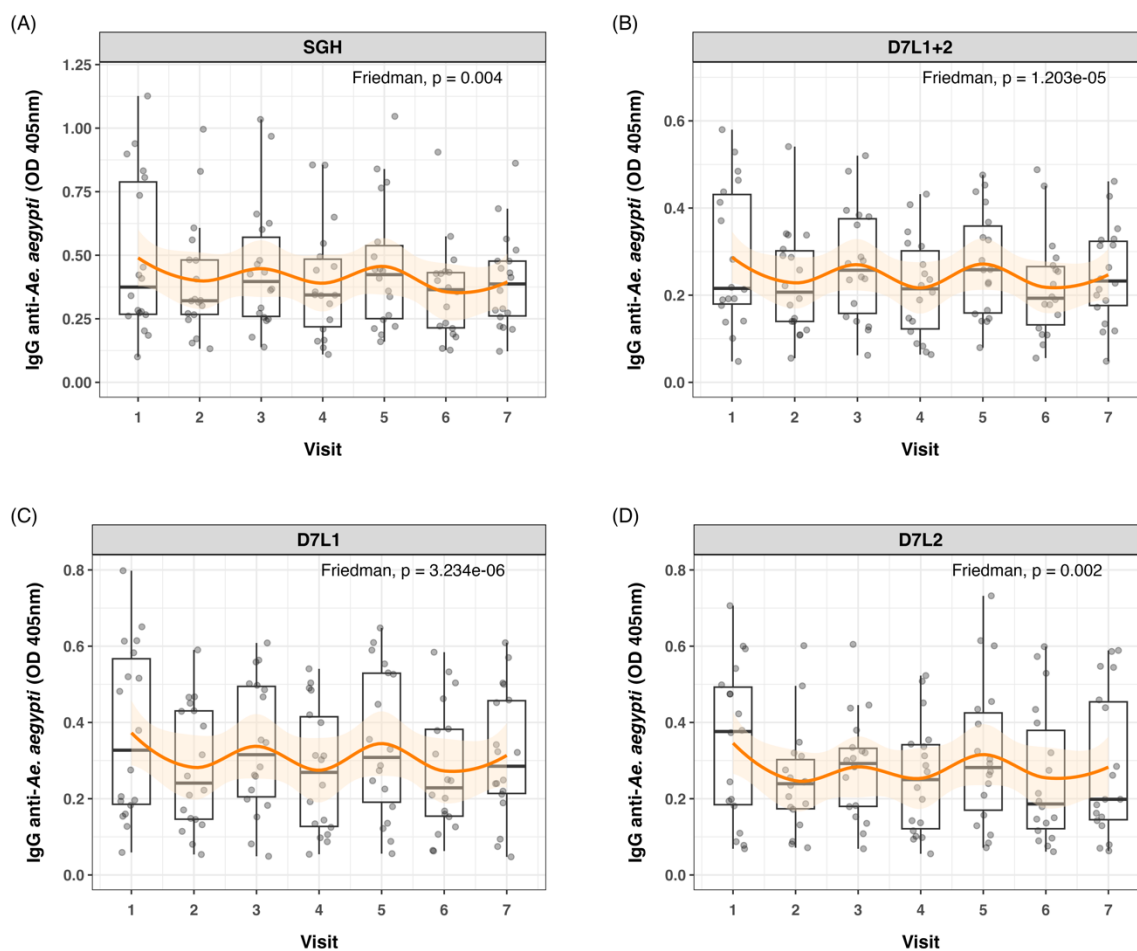


158
159
160
161
162

Figure 2. Heat map showing the Pearson (A) and Spearman (B) correlation coefficients (r and r_s , respectively) between antibody responses against SGH and against AeD7L1+2, AeD7L1, or AeD7L2, alone or when combined with AeApyrase, AeNIH-27 or AeNIH-23.

163 **3.3 Antibody responses show a seasonal fluctuation that is most**
164 **pronounced for AeD7L1 and AeD7L1+2.**

165
166 Wet and dry seasons in Cambodia reflect the seasonal abundance of *Aedes spp.*
167 We detected significant differences in anti-SGH, anti-AeD7L1, anti-AeD7L2, and
168 anti-AeD7L1+2 IgG levels between wet and dry seasons for the same subset of 18
169 Cambodian children who were sampled at seven consecutive visits (Fig. 3). More so,
170 the seasonal fluctuation for AeD7L1 and the composite marker AeD7L1+L2 was
171 stronger (moderate effect size, Kendall W = 0.33 and 0.30, respectively) than that for
172 SGH or AeD7L2 (small effect size, Kendall W=0.17 and 0.19, respectively). No
173 significant differences were observed for the Ab responses against BSA during the
174 wet and dry seasons (Supplementary Fig. 3).
175



176
177 **Figure 3. Seasonal variation in anti-*Ae. aegypti* IgG levels.** Dot and boxplots of
178 standardized ELISA optical density (OD) values of 18 individuals tested at seven different
179 time points (Visit 1 to 7) for IgG against (A) SGH, (B) AeD7L1+2, (C) AeD7L1, and (D)

180 AeD7L2. Visit 1, 3, 5, and 7 took place in wet seasons from 2018 to 2021, the other visits
181 took place during the dry seasons. The solid black horizontal line within the boxplots is the
182 median; the lower and upper borders are, respectively, the 1st and 3rd quartiles; the vertical
183 bars indicate the minimum and maximum values. The orange smoothed fitted curves
184 represent a loess regression (span $\alpha = 0.45$) with 95% confidence intervals (shaded area).
185 Results of the overall Friedman rank test are provided.

186

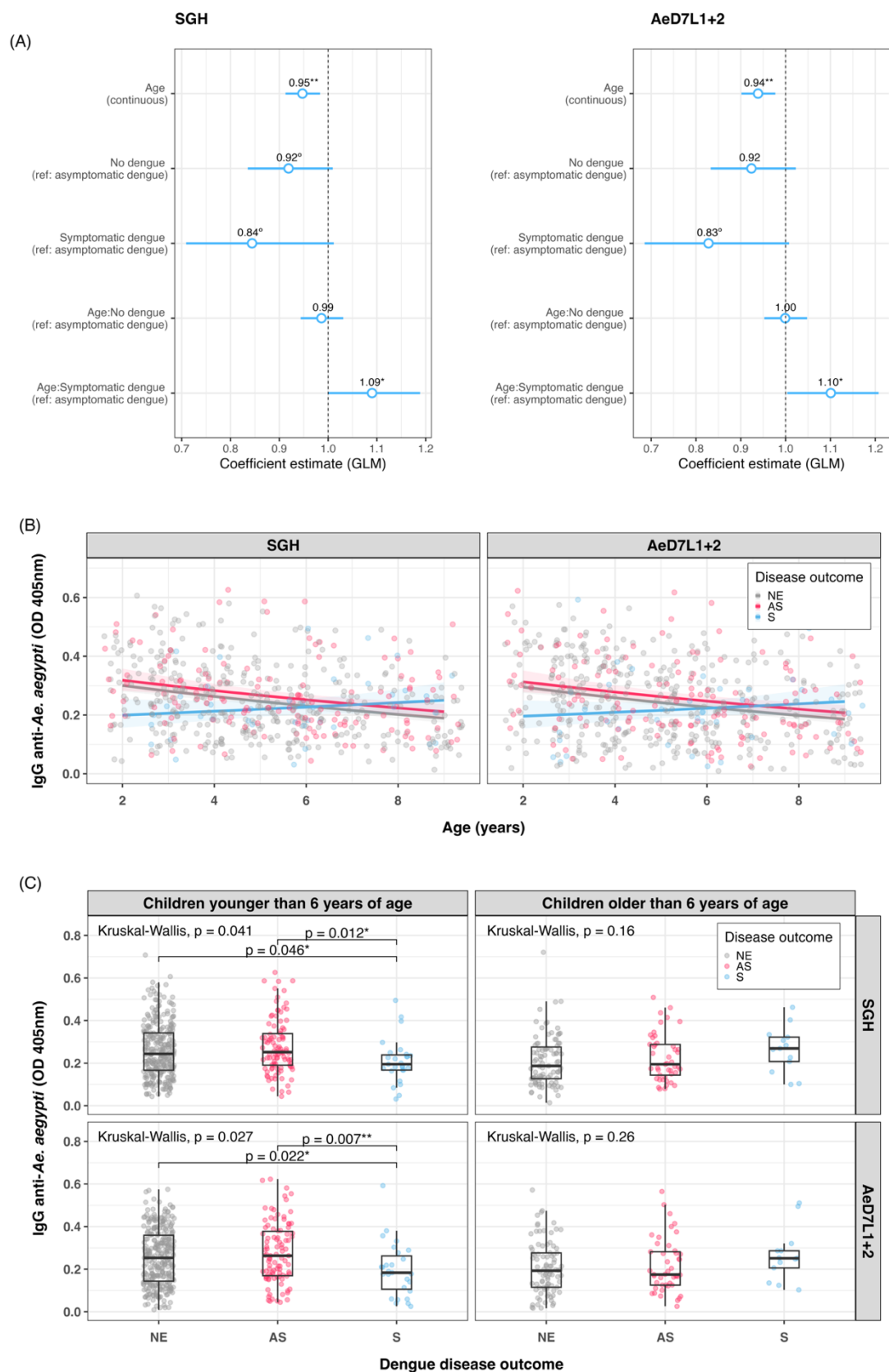
187 **3.4 Children who developed asymptomatic dengue had higher anti-** 188 **AeD7L1+2 antibody titers at baseline than those who developed** 189 **symptomatic dengue.**

190

191 Sera samples of all children naïve at baseline (n=563) were tested for the response
192 against AeD7L1+2 to assess associations with disease outcome (i.e., no dengue
193 infection, asymptomatic dengue, and symptomatic dengue). Correlation coefficients
194 between *Ae. aegypti* SGH and the AeD7L1+2 recombinant proteins remained strong
195 for the full cohort ($r=0.85$, $r_s=0.86$). To investigate associations with anti-*Aedes* Ab
196 levels at baseline and disease, we first fitted Cox PH models that consider time to
197 any dengue infection. We did not observe any significant differential risk for dengue
198 between children with high or low baseline Ab levels, for neither SGH, nor AeD7L1+2
199 (Supplementary Table 2 and 3). We then tested the distribution of baseline Ab
200 responses to SGH and AeD7L1+2 with age and disease outcome group. Accounting
201 for age, disease outcome, and an age x disease outcome interaction term,
202 multivariate models revealed that overall Ab responses decreased with increasing
203 age for both SGH and D7L1+2 (Fig. 4A). However, the Ab response of children who
204 developed symptomatic dengue increased with age compared to children who
205 developed asymptomatic dengue (test of age \times disease outcome interaction
206 term (Fig. 4A). Marginal effect plots of the age x disease outcome interaction from
207 the GLM regression indicate a cross-over in baseline Ab responses at six years old
208 (Fig. 4B). Indeed, when comparing median baseline Ab levels between disease
209 outcomes, a significant difference existed among children younger than six years of
210 age who developed asymptomatic vs. symptomatic dengue, for both SGH and
211 AeD7L1+2 ($P = 0.046$ and $P = 0.022$, respectively, Fig. 4C). Children older than six
212 years did not exhibit differences in baseline median Ab responses between disease
213 outcome groups (Fig. 4C).

214

215



216

217 **Figure 4. Trends in baseline anti-*Ae. aegypti* IgG responses.** (A) Exponentiated
218 regression coefficient estimates for the generalized linear model fitted to the IgG data per
219 assay. The circles represent the exponentiated mean coefficient estimate (the value shown
220 above the corresponding circle). The horizontal lines represent the 95% confidence intervals
221 of the estimate. The referent group was “asymptomatic” for both disease outcome and the
222 age × disease outcome interaction term. (B) Scatterplot of standardized ELISA IgG optical
223 density (OD) values with age at study baseline, for both SGH and AeD7L1+2 (n=563). The
224 solid lines visualize the marginal effect of the age x disease outcome interaction from the
225 GLM regression fitted to the antibody data. (C) Dot and boxplots of IgG OD values for SGH
226 and AeD7L1+2, comparing different dengue disease outcomes for children younger or older
227 than six years old. The solid black horizontal line within the boxplots is the median; the lower
228 and upper borders are, respectively, the 1st and 3rd quartiles; the vertical bars indicate the
229 minimum and maximum values. Results of the overall Kruskal-Wallis test and the post-hoc
230 Dunn’s test for pairwise comparisons are provided. GLM = Generalized Linear Model; OD =
231 Optical Density; NE = No Event; AS = Asymptomatic dengue; S = Symptomatic dengue;
232 SGH = Salivary Gland Homogenate. Significance levels *** $P < 0.001$; ** $P < 0.01$; * $P < 0.05$; °
233 $P < 0.1$.

234

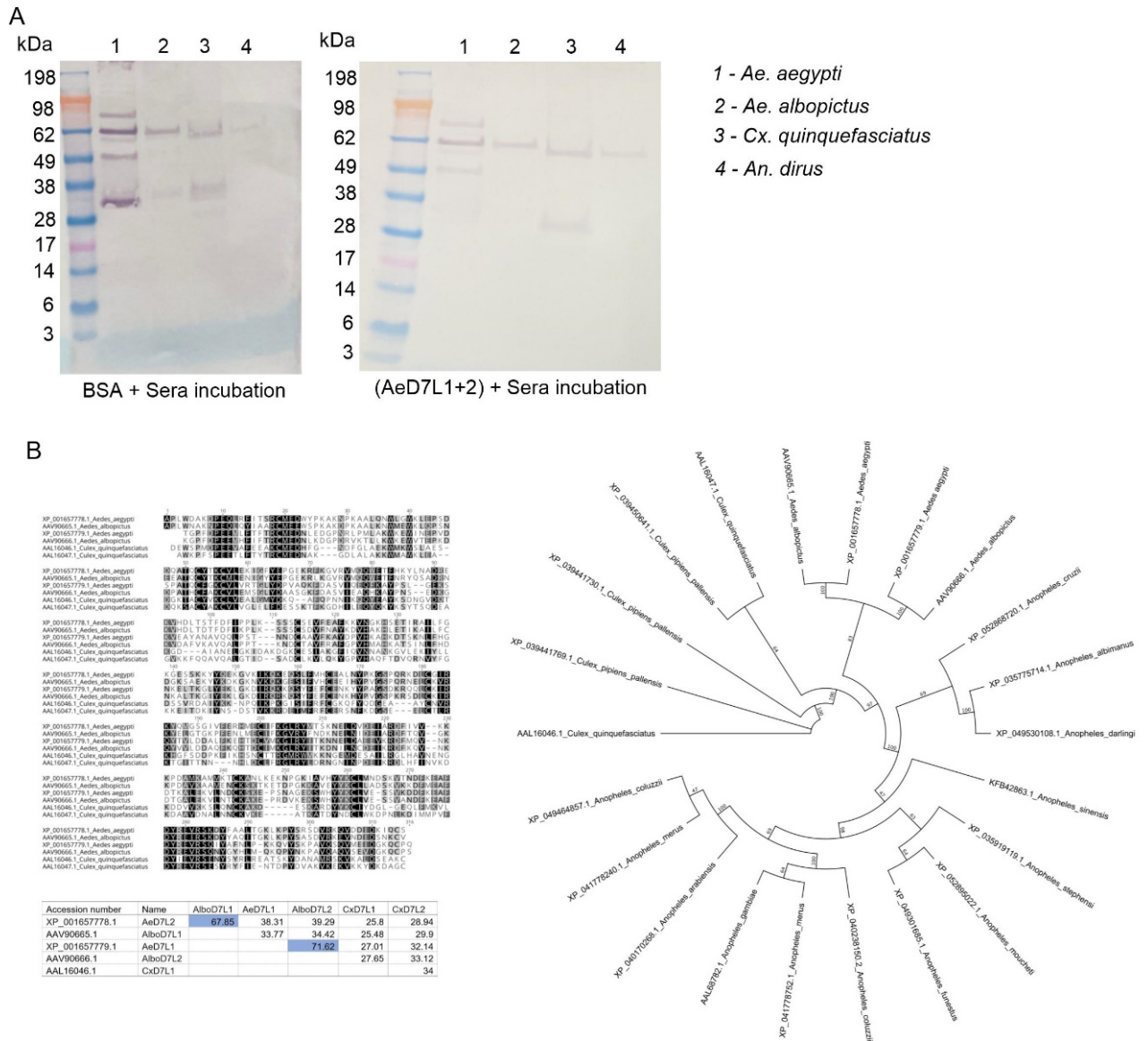
235

236 **3.5 Antibody reactivity to AeD7L1+2 recombinant salivary proteins is** 237 **specific to *Aedes* mosquitoes.**

238

239 Since Cambodians are exposed to the bites of several hematophagous insects
240 during their life, we tested for potential cross-reactions between AeD7L1+2 proteins
241 and salivary proteins from other mosquito species abundant in our study area using
242 an inhibition immunoblot assay. We incubated SGH from *Ae. albopictus*, *Cx.*
243 *quinquefasciatus*, and *An. dirus* with a pool of Cambodian sera reactive to *Ae.*
244 *aegypti* SGH and observed recognition of several salivary proteins at diverse
245 molecular weights, including the ones respective to AeD7L1+2 (Fig 5A, left panel).
246 We then incubated the sera pool with AeD7L1+2 recombinant proteins, to absorb
247 AeD7L1+2 specific Abs. The sera reactivity at 28-38 kDa (corresponding to the MW
248 of AeD7L1 and AeD7L2 proteins) was lost for both *Ae. aegypti* and *Ae. albopictus*
249 SGH (Fig 5A, right panel). However, the sera remained reactive against a *Cx.*
250 *quinquefasciatus* SGH protein of equivalent molecular weight, suggesting that
251 Cambodian children have anti-*Culex* Abs that do not cross-react with AeD7L1+2.

252 This further supports the notion that AeD7L1+2 recombinant proteins are specific to
253 *Aedes* mosquitoes. Indeed, multiple pairwise alignment of the D7L proteins from *Ae.*
254 *aegypti*, *Ae. albopictus* and *Cx. quinquefasciatus* shows a high degree of divergence
255 between species with few conserved areas of identity (Fig. 5B, dark shaded areas).
256 At the *Aedes* genus, the AeD7L2 protein sequence is 67.85 % identical to the
257 AlboD7L1 sequence and the AeD7L1 sequence is 71.62 % identical to the AlboD7L2
258 sequence. Interestingly, AeD7L1 and AeD7L2 protein sequences are only 38.71 %
259 identical. Similarly, the phylogenetic analysis of the Culicidae confirms clustering of
260 AeD7L1 with AlboD7L2, whereas AeD7L2 sequence clustered with AlboD7L1.
261 Proteins from both *Aedes* species, however, were segregated from *Culex* D7L or
262 *Anopheles* D7L proteins.
263



264

265

266 **Figure 5. Specificity of AeD7L1+2 recombinant proteins to Aedes mosquitoes. (A)**

267 Western blots show reactivity of Cambodian sera to SGH of *Ae. aegypti*, *Ae. albopictus*, *Cx.*

268 *quinquefasciatus*, and *An. dirus* without (left) and with (right) pre-incubation with AeD7L1+2

269 recombinant proteins. (B) Multiple alignments of D7L proteins from *Ae. aegypti*, *Ae.*

270 *albopictus*, and *Cx. quinquefasciatus* using MUSCLE. The matrix indicates the percentages

271 of identities between D7L proteins of different species. Color shading indicate percentage

272 identity between sequences, going from 100 % (black) to 0 % identity (white). The

273 evolutionary history was inferred using the Maximum Likelihood method. Evolutionary

274 analyses were conducted in Geneious using the Paup plugin.

275

276 4 Discussion

277

278 *Ae. aegypti* SGH ELISAs are a useful tool to measure mosquito exposure (27), but
279 are costly, laborious, and challenging to standardize between laboratories. Here, we
280 propose an ELISA to measure Ab responses against recombinant *Ae. aegypti*
281 D7L1+2 salivary proteins as a surrogate for monitoring human exposure to *Ae.*
282 *aegypti* bites. Our hypothesis relies on measuring a rapid reduction of specific IgG
283 Ab levels to AeD7L1+2 when exposure to *Ae. aegypti* is disrupted. *Aedes aegypti*
284 abundance and dengue incidence are known to fluctuate throughout seasons, as
285 has been evidenced by entomological indices and previous serosurveys (28, 29). As
286 a proof of principle, the AeD7L1+2 assay uncovered seasonal weather patterns by
287 capturing the waxing and waning of IgG Abs levels from dry to rainy season. This
288 assay This assay utilizes recombinant proteins, thereby forgoing reliance on
289 insectary maintenance and manual salivary gland dissection and enabling
290 standardization through a can be performed in a high throughput and cost-effective
291 platform and it could be assessed through a simple finger prick. It can be employed
292 to identify hot spots areas with high biting rates (30) or evaluate the effectiveness of
293 vector control methods (31-33), which could then inform allocation of scarce public
294 health resources to areas with a high risk of *Aedes*-borne disease transmission.
295 More so, having an accurate estimate of population exposure to *Aedes* mosquitoes
296 will help raise community awareness and might encourage residents in high-risk
297 areas to take protective measures (27).

298

299 The D7 subfamily of salivary proteins are widely present across the order of
300 bloodsucking Diptera (34) and likely regulate hemostasis by scavenging biogenic
301 amines and leukotrienes, which are small molecules that play essential roles in
302 inflammation, allergy, vascular permeability, and vascular tone (35). Indeed, salivary
303 AeD7L knock-out mosquitoes required longer probing times than WT *Ae. aegypti*,
304 confirming its importance on blood feeding (36). The D7L is known to be
305 immunogenic in humans (37) and may serve as potential exposure markers for *An.*
306 *gambiae* (38). Entomological parameters estimating *Ae. aegypti* density are
307 associated with SGH Ab responses substantiating its use as a reference standard for
308 the identification of new exposure markers (9). For the first time, this study formally

309 correlates side-by-side paired responses to distinct *Ae. aegypti* salivary proteins to
310 the whole *Ae. aegypti* SGH. Our unbiased screening approach provides the
311 confidence that AeD7L1+2 assay is well suited to substitute *Ae. aegypti* SGH in
312 ELISAs. The Abs to AeD7L1+2 seem to recognize both *Ae. aegypti* and *Ae.*
313 *albopictus*, serving as an *Aedes* generic exposure tool with no detected cross-
314 reactivity to *Cx. quinquefasciatus* or *An. dirus* mosquitoes SGH, a likely advantage to
315 SGH assays, where the risk of cross-reactivity may be higher. These reactivity
316 patterns are explained by the high sequence identity of D7L salivary proteins within
317 the *Aedes* genus and their high degree of divergence compared to D7L salivary
318 proteins from *Culex* or *Anopheles* species. Deploying this *Aedes* sp. tool can be
319 advantageous for arboviral studies since both *Ae. albopictus* and *Ae. aegypti*
320 effectively transmit many of the same viruses (39, 40). In certain occasions,
321 however, specific information may be required to evaluate if the focus of
322 transmission is more urban (*Ae. aegypti*) or rather in forested areas (*Ae. albopictus*).
323 Our AeD7L1+2 assay could then be complemented with novel species-specific, yet
324 less sensitive, specific salivary protein ELISAs.

325 Using our three-year longitudinal pediatric cohort study (41), we show that IgG Ab
326 levels against AeD7L1+2 are higher in naïve children younger than six years who
327 developed asymptomatic (primary) dengue than those who developed symptomatic
328 (primary) dengue. This observation may allude to a protective effect of AeD7L Abs in
329 dengue disease outcomes. However, we were unable to replicate this association
330 when including person-time at-risk in the analysis, highlighting the complexity of this
331 “DENV – *Aedes* salivary proteins – anti-saliva Abs” triad. It has been shown that
332 DENV-infected individuals have significantly higher Ab titers against total *Ae. aegypti*
333 SGH than controls [3; 7; 12; 35]. Similarly, IgG levels against the Nterm-34 kDa and
334 AgBR1 were higher in dengue patients without warning signs than in those with
335 dengue with warning signs [10]. However, Abs against the Nterm-34kDa peptide
336 were not able to retrospectively identify individuals who developed DENV infection
337 (14) and in Colombia no statistically significant differences were found when
338 comparing antibodies to D7L between febrile DENV-negative, non-febrile DENV-
339 negative or DENV-positive subjects (17), underscoring the uniqueness of each
340 salivary protein and their distinct role in disease transmission. In the mosquito
341 salivary glands, AeD7L abundance is upregulated during DENV infection and AeD7L

342 is believed to bind DENV directly forming proteins complexes (42). Interestingly,
343 AeD7L inhibited DENV infection in a human monocyte cell line and in vivo in a
344 mouse model (42). The role of AeD7L1+2 Abs in infection adds further complexity to
345 the DENV establishment in humans from endemic areas. AeD7L1+2 Abs may bind
346 to D7 during transmission and help neutralize D7-DENV complexes leading to
347 reduction in viral dissemination and primary asymptomatic dengue. However, the
348 neutralization capacity and the quality of AeD7L1+2 Abs from our dengue
349 asymptomatic versus symptomatic subjects on D7-DENV complexes remains to be
350 tested.

351 We acknowledge that more data are needed to validate the performance of the
352 AeD7L1+2 assay in other populations. To expedite universal application of the
353 AeD7L1+2 assay we are committed to openly share the AeD7L1+2 recombinant
354 proteins with other research groups. The AeD7L1+2 proteins used in our assay are
355 stable when kept refrigerated after a four-month testing period, with only a minor
356 decay at room temperature. This supports their simple deployment in resource-
357 scarce settings, especially when developed into a quantitative lateral flow assay
358 which will in turn overcome the need for expensive equipment, such as an ELISA
359 reader spectrophotometer, and inter-laboratory standardization. A limiting factor of
360 our assay is the lack of a seropositivity cutoff, which is challenging to define given
361 that most Cambodians are under constant *Ae. aegypti* biting pressure. Additionally,
362 we did not study other Ab isotypes or IgG subclasses but focused on IgG responses
363 given their abundance and robustness in freeze-and-thaw cycles (43-45). Future
364 mechanistic studies would benefit from in-depth investigations into the humoral and
365 cellular immune response to *Ae. aegypti* saliva to gain understanding of how
366 AeD7L1+2 Abs impact dengue disease outcome. Knowing the rate at which AeD7L
367 Abs decay after disrupting mosquito-human contact will be critical to optimize its use
368 as an epidemiological tool. Abs against saliva of several vector species, including
369 *Ae. aegypti*, are known to decline with age (11, 46-51). Yet, how these dynamics
370 impact dengue disease outcome is not well understood. Discerning these age trends
371 will be crucial when factoring them into the design of future studies. Overall, bridging
372 these gaps will contribute to a more nuanced understanding of the interplay between
373 immunity and *Aedes*-borne diseases and expose potential strategies for their
374 prevention and control.

375 The highly sensitive and *Aedes*-specific novel AeD7L1+2 exposure assay will be
376 useful in advancing the epidemiological understanding of *Aedes*-borne diseases. Our
377 assay will encourage and facilitate the standardization of future serosurveys and
378 epidemiological studies by its ability to provide a robust estimation of human-
379 mosquito contact in a high-throughput fashion.

380 **5 Material and methods**

381

382 **5.1 Study population and sample selection**

383

384 The samples selected for the present study originate from the PAGODAS
385 longitudinal cohort study conducted in Cambodia, of which study protocol and results
386 are reported elsewhere (18, 41). In brief, children enrolled in the study (2–9 years
387 old) were followed up every six months for a period of three years to assess their
388 immune status against dengue and *Ae. aegypti* saliva. Children were considered
389 dengue naïve at study baseline if they were negative on the PanBio Dengue Indirect
390 IgG enzyme-linked immunosorbent assay (ELISA), or, when ELISA positive, they
391 were negative for the presence of DENV-specific neutralizing antibodies (Abs)
392 (n=563). During the follow up period, 41 children developed symptomatic dengue as
393 confirmed by RT-PCR for DENV 1–4. Children who seroconverted via pan-DENV
394 ELISA screening with a corresponding increase in DENV 1-4 neutralization Ab titers
395 over the threshold value of 1:40 at one of the semiannual visits, and who had not
396 reported fever-like symptoms during active febrile surveillance, were considered to
397 have had asymptomatic dengue (n=173).

398 For the present study, a random sample of baseline-dengue naïve children, stratified
399 by quartiles of anti-SGH Ab response levels (i.e., high, medium, low), were selected
400 for the initial immunogenicity screening of *Ae. aegypti* salivary proteins by Western
401 blotting (n = 102). Ab responses against five identified salivary antigens and
402 combinations thereof were then measured in a random subset of samples collected
403 at all seven visits from 18 baseline-dengue naïve children (n=126) to investigate
404 correlations with the Ab response against whole SGH, and to evaluate the
405 seasonality of these Ab responses. Associations between anti-salivary protein Abs
406 and disease outcome (i.e., no dengue infection, symptomatic disease, or
407 asymptomatic disease) were assessed and correlations confirmed using all baseline-

408 dengue naïve samples (n=563). Negative controls were selected from National
409 Institutes of Health (NIH) Clinical Center (CC) blood donor samples that were non-
410 reactive against *Ae. aegypti* saliva (n = 10), positive controls were selected from
411 human sera samples with high reactivity against *Ae. aegypti* SGH, as defined by
412 ELISA, and stored at the International Centre of Excellence in Research laboratory.
413

414 5.2 Ethics

415
416 The study protocol was approved by the institutional review boards (IRB) at the US
417 National Institutes of Health and the National Ethics Committee on Human Research
418 (NECHR) in Cambodia. The parents or guardians of all pediatric participants
419 provided signed informed consent to participate in the study (ClinicalTrials.gov
420 identifier: NCT03534245). Sera from healthy U.S. blood donors were collected
421 following signed informed consent from participants in the National Institutes of
422 Health Clinical Center IRB-approved protocol entitled *Collection and Distribution of*
423 *Blood Components from Healthy Donors for In Vitro Research Use*
424 (ClinicalTrials.gov identifier: NCT00001846).
425

426 5.3 Mosquito rearing, dissection, and salivary gland homogenization

427
428 *Ae. aegypti* (Kampong Speu strain, Cambodia and Liverpool strain, Rockville, MD),
429 *Ae. albopictus* (Phnom Penh strain, Cambodia), *Cx. quinquefasciatus* (Phnom Penh
430 strain, Cambodia), and *An. dirus* (Mondulkiri strain, Cambodia) mosquitoes were
431 reared in a controlled environment insectary at the National Center for Parasitology,
432 Entomology and Malaria Control (Cambodia) under a 12-h light-dark cycle, at 26° C,
433 and 75 % relative humidity. *Ae. aegypti* Rockefeller strain was reared under the
434 same conditions at the Laboratory of Malaria and Vector Research (National
435 Institutes of Health, U.S.). Larvae were fed with fish food (Tetra, USA) every 2 days
436 until pupae development, while adults were offered 10 % sucrose solution, *ad*
437 *libitum*. Salivary glands from females 7 – 10 days post-eclosion were dissected
438 under a stereomicroscope at one gland per microliter of sterile 1 x phosphate-
439 buffered saline (PBS), pH 7.4 (Thermo Scientific) and stored at –80° C. Prior to use,
440 salivary glands were disrupted through ultrasonication, and supernatant collected
441 after removal of insoluble debris by centrifugation at 14,000 rpm for 5 min at 4° C.

442

443 5.4 Production of recombinant *Ae. aegypti* salivary proteins

444

445 The human cell line HEK293 was used to recombinantly express 18 *Ae. aegypti*
446 recombinant proteins, as described previously (Valenzuela-Leon et al., 2022). After
447 identification of the most immunogenic proteins, we scaled up the production of
448 AeApyrase, AeD7L1, AeD7L2, NIH-23, and NIH-27 and codon-optimized them for
449 mammalian expression, synthesized with a carboxyl-terminal HIS-tag (GenScript)
450 and cloned into pHEK293 Ultra Expression Vectors (Takara). The SAIC Advanced
451 Research Facility (Frederick, MD) then transfected the EXPI293F human cells and
452 recombinantly expressed the proteins. Proteins were purified from the cell culture
453 supernatant using AmMag Ni Magnetic beads (GenScript) and the AmMag Wand
454 D12 (GenScript), following manufacturer's instructions. Proteins dialysis was
455 performed overnight with sterile PBS (Lonza) using 10K MWCO Slide-A-Lyzer
456 Dialysis Cassettes (Thermo Scientific). The BCA Protein Assay Kit (Pierce) was
457 used to quantify the protein concentration, after which SDS-PAGE was performed
458 using NuPAGE Novex 4–12 % Bis-Tris gradient protein gels (Thermo Fisher
459 Scientific) to assess the quality of the purified proteins. Proteins were visualized with
460 Coomassie G-250 (SimplyBlue SafeStain, Invitrogen) using the eStain protein
461 staining device (GenScript), following manufacturer's instructions.

462

463 5.5 Enzyme-linked immunosorbent assay

464

465 Total anti-*Ae. aegypti* SGH IgG was measured by performing ELISAs as adapted
466 from our previously described protocol (18). In brief, 96-well Immulon plates were
467 coated with either *Ae. aegypti* SGH (2 µg/ml, Kampong Speu strain) or our *Ae.*
468 *aegypti* recombinant salivary proteins (5 µg/ml) diluted in carbonate-bicarbonate
469 buffer (pH 9.6) and incubated overnight at 4° C. Plates were blocked with 200 µl of
470 TBST/BSA 4 % for 1 hour at RT and incubated with sera (diluted 1:200) for 2 hours
471 at RT. Plates were washed three times with TBST. Secondary anti-human IgG Abs
472 conjugated to alkaline phosphatase were added at a concentration of 1:10,000,
473 diluted in TBST-BSA 4 % (Millipore-Sigma A1543), and incubated for 1 hour at RT.
474 After six washes, Alkaline Phosphatase Yellow (pNPP) substrate was added, and
475 absorbance read at 450 nm within 30 minutes. Sera samples were tested in

476 duplicate and retested if the coefficient of variation was above 20 %. The optical
477 density (OD) value of the blank control, included in each plate, was subtracted from
478 the raw sample OD values. The same set of positive and negative control samples
479 was included in each plate (per antigen) to allow for inter-plate standardization (i.e.,
480 $OD_{\text{sample}} / (OD_{\text{positive control}} - OD_{\text{negative control}})$).

481

482 5.6 Western blot

483

484 Western blot experiments were performed to identify the most immunogenic *Ae.*
485 *aegypti* salivary proteins. In brief, 50 µg of *Ae. aegypti* SGH (Rockefeller strain) or 5
486 µg of recombinant proteins were denatured at 70° C for 10 minutes under non-
487 reducing conditions and loaded into one 2D well (NuPAGE™ 4 – 12 % Bis-Tris Gel,
488 Thermo Fisher Scientific) or in each lane of a 10-well gel (Bolt™ 4 – 12 % Bis-Tris
489 Plus, Thermo Fisher Scientific), respectively. Proteins were separated by SDS-
490 PAGE at 200 V for 40 min. The proteins were transferred to a 0.45 µm nitrocellulose
491 membrane (Thermo Fisher Scientific) and blocked with 5 % nonfat dried milk
492 dissolved in Tris-buffered saline with 0.05 % Tween 20 (TBST–5 % milk) (Sigma) at
493 4° C overnight. The next day, the membrane was incubated with sera samples
494 (diluted 1:200) in TBST–5 % milk. Samples were either individually loaded in the
495 mini-protean II multiscreen apparatus (Bio-Rad) (i.e., for the initial immunogenicity
496 screening of whole SGH) or pooled and transferred to hybridization bags (Kapak
497 SealPAK, ProAmpac) (i.e., to verify the immunogenicity of the five identified
498 proteins). After a 2-hour incubation at RT, the membranes were incubated for 1 hour
499 at RT with secondary alkaline phosphatase-conjugated goat anti-human IgG heavy
500 and light chains (IgG H+L; diluted at 1:10,000) (SIGMA). Between each phase,
501 membranes were washed three times for five minutes with TBST. The chromogenic
502 reaction was initiated with Alkaline Phosphatase Western Blue® Stabilized Substrate
503 (Promega) and stopped with distilled water after approximately 10 to 15 minutes.
504 Images were captured using a KwikQuant Digital Western Blot Detection System
505 (Kindle Biosciences). Kindle Biosciences' KwikQuant Image Analyzer software was
506 used to analyze images and to identify reactive protein bands. For the Western blot
507 inhibition assay, we first quenched all *Aedes* specific antibodies by incubating the

508 pooled sera with 5 µg of both recombinant AeD7L1 and AeD7L2 in hybridization
509 bags overnight at RT prior to incubation with the membrane.

510

511 5.7 Phylogenetic analysis

512

513 The sequences of the salivary D7 long form proteins from *Ae. aegypti*, *Ae. albopictus*
514 and *Cx. quinquefasciatus* were aligned after removal of their predicted signal peptide
515 sequence (52). Multiple sequence alignment and identity/similarity matrices were
516 constructed in Geneious v2022.1.1 using the MUSCLE algorithm (53) and the
517 PAM200 scoring matrix. Homologues of AeD7L1 and AeD7L2 were identified in the
518 Non-Redundant (NR) protein database and the Transcriptome Shotgun Assembly
519 (TSA) database using the Basic Local Alignment Search Tool (54). Mosquitoes with
520 the most homologous sequences to *Ae. aegypti* (based on their E-value) were
521 selected. The unrooted evolutionary tree was then constructed with PAUP 4.0 (55)
522 in Geneious v2022.1.1, following the maximum likelihood procedure of the WAG
523 amino acid substitution matrix model. The partial deletion option was applied for
524 gaps/missing data. The reliability of the trees was tested by the bootstrap method
525 (n=1,000).

526

527 5.8 Statistical analysis

528

529 Normality of OD values was assessed by visual inspection of their distribution and
530 formally tested using the Shapiro-Wilk test. A Kruskal-Wallis rank test was used to
531 test for differences among > 2 groups (for non-parametric inferences), with a post-
532 hoc Dunn's test. A Friedman rank test with a post-hoc Conover-Iman test was used
533 to test for differences among more than two paired groups. Multiple comparisons
534 were adjusted using the Benjamini-Hochberg procedure. The Kendall W was used
535 as a measure of the Friedman test effect size. Changes in immune responses with
536 age and disease outcome were tested by fitting generalized linear models (GLM) to
537 the Ab values, where a gamma distribution and log-link function gave the best fit by
538 log-likelihood goodness-of-fit statistics. An age and disease outcome interaction term
539 was included in the model, with age treated as a mean-centered continuous variable.
540 Correlations between anti-SGH and anti-recombinant protein IgG responses were
541 estimated by the Pearson method to investigate a linear relationship between both

542 responses (r), and by the Spearman's rank method to assess monotonic
543 relationships (r_s). Cox proportional hazards (PH) models were used to model time to
544 any dengue infection (in days), comparing those with high vs. low Ab responses at
545 baseline, and controlling for sex, age, insecticide use, larvicide use, bed net use,
546 mosquito coil use, school attendance, socio-economic status, and number of toilets
547 around the house. To fit the Cox PH models, Ab responses were categorized as high
548 or low based on a cutoff established using tertiles of Ab responses: 'high' is defined
549 as the middle and highest tertiles, 'low' as the lowest tertile. All statistical analyses
550 were performed in R Statistical Software (56), and graphical representations created
551 using the 'ggplot2' and the 'corrplot' package in R (57, 58).
552

553 **Data availability statement**

554 The raw data supporting this article can be found in the supplementary files, Further
555 inquiries can be directed to the corresponding author.

556 **Ethics statement**

557 The study protocol was approved by the institutional review boards (IRB) at the US
558 National Institutes of Health and the National Ethics Committee on Human Research
559 (NECHR) in Cambodia. The parents or guardians of all pediatric participants
560 provided signed informed consent to participate in the study (ClinicalTrials.gov
561 identifier: NCT03534245). Sera from NIH CC blood donors were collected following
562 signed informed consent from participants in the National Institutes of Health Clinical
563 Center IRB-approved protocol entitled *Collection and Distribution of Blood*
564 *Components from Healthy Donors for In Vitro Research Use* (protocol number: 99-
565 CC-0168; ClinicalTrials.gov identifier: NCT00001846).

566 **Author contributions**

567 FO, SC, LW, JGV, JEM, CY, CL, RL, and RH conceptualized the study. SC, LW, SN,
568 PL, KT, JO, RSC, AP, DK, SL, RS performed experiments and discussed data.
569 PCVL and EC discussed data and provided reagents. FO, SC and LW performed
570 data analysis. FO, SC, LW wrote the manuscript. All authors contributed to the article
571 and approved the submitted version.

572 **Funding**

573 This research was supported by the Intramural Research Program of the National
574 Institute of Allergy and Infectious Diseases at the National Institutes of Health
575 (Rockville, USA)

576 **Acknowledgments**

577 We thank the participating children and their parents in Chbar Mon, Kampong Speu.
578 We appreciate the continuous support and collaboration from the provincial health
579 department and hospital directors of Kampong Speu province. Additionally, we
580 commend the clinical staff of Kampong Speu District Referral Hospital for their
581 outstanding patient care in this project.

582 **Conflict of interest**

583 The authors declare that the research was conducted in the absence of any
584 commercial or financial relationships that could be construed as a potential conflict of
585 interest.

586

587 References

588

- 589 1. Bhatt S, Gething PW, Brady OJ, Messina JP, Farlow AW, Moyes CL, Drake JM, Brownstein JS,
590 Hoen AG, Sankoh O, Myers MF, George DB, Jaenisch T, Wint GR, Simmons CP, Scott TW,
591 Farrar JJ, Hay SI. 2013. The global distribution and burden of dengue. *Nature* 496:504-7.
- 592 2. Tian N, Zheng JX, Guo ZY, Li LH, Xia S, Lv S, Zhou XN. 2022. Dengue Incidence Trends and Its
593 Burden in Major Endemic Regions from 1990 to 2019. *Trop Med Infect Dis* 7.
- 594 3. WHO. 2023. Dengue and severe dengue, on World Health Organisation.
595 <https://www.who.int/news-room/fact-sheets/detail/dengue-and-severe-dengue>. Accessed
596 4. Alied M, Nguyen D, Abdul Aziz JM, Vinh DP, Huy NT. 2023. Dengue fever on the rise in
597 Southeast Asia. *Pathog Glob Health* 117:1-2.
- 598 5. Ribeiro JM. 1987. Role of saliva in blood-feeding by arthropods. *Annu Rev Entomol* 32:463-
599 78.
- 600 6. Dhawan R, Kumar M, Mohanty AK, Dey G, Advani J, Prasad TS, Kumar A. 2017. Mosquito-
601 Borne Diseases and Omics: Salivary Gland Proteome of the Female *Aedes aegypti* Mosquito.
602 *OMICS* 21:45-54.
- 603 7. Chowdhury A, Modahl CM, Misse D, Kini RM, Pompon J. 2021. High resolution proteomics of
604 *Aedes aegypti* salivary glands infected with either dengue, Zika or chikungunya viruses
605 identify new virus specific and broad antiviral factors. *Sci Rep* 11:23696.
- 606 8. Schneider CA, Calvo E, Peterson KE. 2021. Arboviruses: How Saliva Impacts the Journey from
607 Vector to Host. *Int J Mol Sci* 22.
- 608 9. Londono-Renteria B, Cardenas JC, Cardenas LD, Christofferson RC, Chisenhall DM, Wesson
609 DM, McCracken MK, Carvajal D, Mores CN. 2013. Use of anti-*Aedes aegypti* salivary extract
610 antibody concentration to correlate risk of vector exposure and dengue transmission risk in
611 Colombia. *PLoS One* 8:e81211.
- 612 10. Mathieu-Daudé F, Claverie A, Plichart C, Boulanger D, Mphande FA, Bossin HC. 2018. Specific
613 human antibody responses to *Aedes aegypti* and *Aedes polynesiensis* saliva: A new
614 epidemiological tool to assess human exposure to disease vectors in the Pacific. *PLOS*
615 *Neglected Tropical Diseases* 12.
- 616 11. Doucoure S, Mouchet F, Cournil A, Le Goff G, Cornелиe S, Roca Y, Giraldez MG, Simon ZB,
617 Loayza R, Misse D, Flores JV, Walter A, Rogier C, Herve JP, Remoue F. 2012. Human antibody
618 response to *Aedes aegypti* saliva in an urban population in Bolivia: a new biomarker of
619 exposure to Dengue vector bites. *Am J Trop Med Hyg* 87:504-10.
- 620 12. Doucoure S, Mouchet F, Cornелиe S, DeHecq JS, Rutee AH, Roca Y, Walter A, Herve JP, Misse
621 D, Favier F, Gasque P, Remoue F. 2012. Evaluation of the human IgG antibody response to
622 *Aedes albopictus* saliva as a new specific biomarker of exposure to vector bites. *PLoS Negl*
623 *Trop Dis* 6:e1487.
- 624 13. Doucoure S, Cornелиe S, Patramool S, Mouchet F, Demettre E, Seveno M, Dehecq JS, Rutee H,
625 Herve JP, Favier F, Misse D, Gasque P, Remoue F. 2013. First screening of *Aedes albopictus*
626 immunogenic salivary proteins. *Insect Mol Biol* 22:411-23.
- 627 14. Ndille EE, Dubot-Peres A, Doucoure S, Mouchet F, Cornелиe S, Sidavong B, Fournet F, Remoue
628 F. 2014. Human IgG antibody response to *Aedes aegypti* Nterm-34 kDa salivary peptide as an
629 indicator to identify areas at high risk for dengue transmission: a retrospective study in
630 urban settings of Vientiane city, Lao PDR. *Trop Med Int Health* 19:576-80.
- 631 15. Machain-Williams C, Mammen MP, Jr., Zeidner NS, Beaty BJ, Prenni JE, Nisalak A, Blair CD.
632 2012. Association of human immune response to *Aedes aegypti* salivary proteins with
633 dengue disease severity. *Parasite Immunol* 34:15-22.
- 634 16. Etienne V, Gallagher A, Christofferson RC, McCracken MK, Cummings DAT, Long MT. 2023.
635 Antibodies to *Aedes* spp. salivary proteins: a systematic review and pooled analysis.
636 *Frontiers in Tropical Diseases* 4.

- 637 17. Londono-Renteria BL, Shakeri H, Rozo-Lopez P, Conway MJ, Duggan N, Jaber-Douraki M,
638 Colpitts TM. 2018. Serosurvey of Human Antibodies Recognizing *Aedes aegypti* D7 Salivary
639 Proteins in Colombia. *Front Public Health* 6:111.
- 640 18. Manning JE, Chea S, Parker DM, Bohl JA, Lay S, Mateja A, Man S, Nhek S, Ponce A, Sreng S,
641 Kong D, Kimsan S, Meneses C, Fay MP, Suon S, Huy R, Lon C, Leang R, Oliveira F. 2022.
642 Development of Inapparent Dengue Associated With Increased Antibody Levels to *Aedes*
643 *aegypti* Salivary Proteins: A Longitudinal Dengue Cohort in Cambodia. *J Infect Dis* 226:1327-
644 1337.
- 645 19. Ribeiro JM, Arca B, Lombardo F, Calvo E, Phan VM, Chandra PK, Wikel SK. 2007. An
646 annotated catalogue of salivary gland transcripts in the adult female mosquito, *Aedes*
647 *aegypti*. *BMC Genomics* 8:6.
- 648 20. Valenzuela JG, Pham VM, Garfield MK, Francischetti IM, Ribeiro JM. 2002. Toward a
649 description of the sialome of the adult female mosquito *Aedes aegypti*. *Insect Biochem Mol*
650 *Biol* 32:1101-22.
- 651 21. Calvo E, Tokumasu F, Marinotti O, Villeval JL, Ribeiro JMC, Francischetti IMB. 2007. *Aegyptin*,
652 a novel mosquito salivary gland protein, specifically binds to collagen and prevents its
653 interaction with platelet glycoprotein VI, integrin $\alpha 2\beta 1$, and von Willebrand factor. *J*
654 *Biol Chem* 282:26928-26938.
- 655 22. Calvo E, Mans BJ, Andersen JF, Ribeiro JM. 2006. Function and evolution of a mosquito
656 salivary protein family. *J Biol Chem* 281:1935-42.
- 657 23. Matthews BJ, Dudchenko O, Kingan SB, Koren S, Antoshechkin I, Crawford JE, Glassford WJ,
658 Herre M, Redmond SN, Rose NH, Weedall GD, Wu Y, Batra SS, Brito-Sierra CA, Buckingham
659 SD, Campbell CL, Chan S, Cox E, Evans BR, Fansiri T, Filipovic I, Fontaine A, Gloria-Soria A, Hall
660 R, Joardar VS, Jones AK, Kay RGG, Kodali VK, Lee J, Lycett GJ, Mitchell SN, Muehling J,
661 Murphy MR, Omer AD, Partridge FA, Peluso P, Aiden AP, Ramasamy V, Rasic G, Roy S,
662 Saavedra-Rodriguez K, Sharan S, Sharma A, Smith ML, Turner J, Weakley AM, Zhao Z, Akbari
663 OS, Black WCt, Cao H, et al. 2018. Improved reference genome of *Aedes aegypti* informs
664 arbovirus vector control. *Nature* 563:501-507.
- 665 24. Martins M, Ramos LFC, Murillo JR, Torres A, de Carvalho SS, Domont GB, de Oliveira DMP,
666 Mesquita RD, Nogueira FCS, Maciel-de-Freitas R, Junqueira M. 2021. Comprehensive
667 Quantitative Proteome Analysis of *Aedes aegypti* Identifies Proteins and Pathways Involved
668 in *Wolbachia pipientis* and Zika Virus Interference Phenomenon. *Front Physiol* 12:642237.
- 669 25. Wasinpiyamongkol L, Patramool S, Luplertlop N, Surasombatpattana P, Doucoure S,
670 Mouchet F, Seveno M, Remoue F, Demettré E, Brizard JP, Jouin P, Biron DG, Thomas F, Misse
671 D. 2010. Blood-feeding and immunogenic *Aedes aegypti* saliva proteins. *Proteomics*
672 10:1906-16.
- 673 26. Champagne DE, Smartt CT, Ribeiro JM, James AA. 1995. The salivary gland-specific apyrase
674 of the mosquito *Aedes aegypti* is a member of the 5'-nucleotidase family. *Proc Natl Acad Sci*
675 *U S A* 92:694-8.
- 676 27. Sagna AB, Kassie D, Couvray A, Adja AM, Hermann E, Riveau G, Salem G, Fournet F, Remoue
677 F. 2019. Spatial Assessment of Contact Between Humans and *Anopheles* and *Aedes*
678 Mosquitoes in a Medium-Sized African Urban Setting, Using Salivary Antibody-Based
679 Biomarkers. *J Infect Dis* 220:1199-1208.
- 680 28. Choi Y, Tang CS, McIver L, Hashizume M, Chan V, Abeyasinghe RR, Iddings S, Huy R. 2016.
681 Effects of weather factors on dengue fever incidence and implications for interventions in
682 Cambodia. *BMC Public Health* 16:241.
- 683 29. Wai KT, Arunachalam N, Tana S, Espino F, Kittayapong P, Abeyewickreme W, Hapangama D,
684 Tyagi BK, Htun PT, Koyadun S, Kroeger A, Sommerfeld J, Petzold M. 2012. Estimating dengue
685 vector abundance in the wet and dry season: implications for targeted vector control in
686 urban and peri-urban Asia. *Pathog Glob Health* 106:436-45.

- 687 30. Parker DM, Medina C, Bohl J, Lon C, Chea S, Lay S, Kong D, Nhek S, Man S, Doehl JSP, Leang
688 R, Kry H, Rekol H, Oliveira F, Minin VM, Manning JE. 2023. Determinants of exposure to
689 Aedes mosquitoes: A comprehensive geospatial analysis in peri-urban Cambodia. *Acta Trop*
690 239:106829.
- 691 31. Fustec B, Phanitchat T, Aromseree S, Pientong C, Thaewngongiew K, Ekalaksananan T,
692 Cerqueira D, Poinsignon A, Elguero E, Bangs MJ, Alexander N, Overgaard HJ, Corbel V. 2021.
693 Serological biomarker for assessing human exposure to Aedes mosquito bites during a
694 randomized vector control intervention trial in northeastern Thailand. *PLoS Negl Trop Dis*
695 15:e0009440.
- 696 32. Elanga Ndille E, Doucoure S, Poinsignon A, Mouchet F, Cornelie S, D'Ortenzio E, DeHecq JS,
697 Remoue F. 2016. Human IgG Antibody Response to Aedes Nterm-34kDa Salivary Peptide, an
698 Epidemiological Tool to Assess Vector Control in Chikungunya and Dengue Transmission
699 Area. *PLoS Negl Trop Dis* 10:e0005109.
- 700 33. Doucoure S, Mouchet F, Cornelie S, Drame PM, D'Ortenzio E, DeHecq JS, Remoue F. 2014.
701 Human antibody response to Aedes albopictus salivary proteins: a potential biomarker to
702 evaluate the efficacy of vector control in an area of Chikungunya and Dengue Virus
703 transmission. *Biomed Res Int* 2014:746509.
- 704 34. Valenzuela JG, Charlab R, Gonzalez EC, de Miranda-Santos IK, Marinotti O, Francischetti IM,
705 Ribeiro JM. 2002. The D7 family of salivary proteins in blood sucking diptera. *Insect Mol Biol*
706 11:149-55.
- 707 35. Alvarenga PH, Andersen JF. 2022. An Overview of D7 Protein Structure and Physiological
708 Roles in Blood-Feeding Nematocera. *Biology (Basel)* 12.
- 709 36. Martin-Martin I, Kojin BB, Aryan A, Williams AE, Molina-Cruz A, Valenzuela-Leon PC,
710 Shrivastava G, Botello K, Minai M, Adelman ZN, Calvo E. 2023. Aedes aegypti D7 long salivary
711 proteins modulate blood feeding and parasite infection. *mBio* doi:10.1128/mbio.02289-
712 23:e0228923.
- 713 37. Oktarianti R, Senjarini K, Hayano T, Fatchiyah F, Aulanni'am. 2015. Proteomic analysis of
714 immunogenic proteins from salivary glands of Aedes aegypti. *J Infect Public Health* 8:575-82.
- 715 38. Oseno B, Marura F, Ogwang R, Muturi M, Njunge J, Nkumama I, Mwakesi R, Mwai K, Rono
716 MK, Mwakubambanya R, Osier F, Tuju J. 2022. Characterization of Anopheles gambiae D7
717 salivary proteins as markers of human-mosquito bite contact. *Parasit Vectors* 15:11.
- 718 39. Leta S, Beyene TJ, De Clercq EM, Amenu K, Kraemer MUG, Revie CW. 2018. Global risk
719 mapping for major diseases transmitted by Aedes aegypti and Aedes albopictus. *Int J Infect*
720 *Dis* 67:25-35.
- 721 40. Kraemer MU, Sinka ME, Duda KA, Mylne AQ, Shearer FM, Barker CM, Moore CG, Carvalho
722 RG, Coelho GE, Van Bortel W, Hendrickx G, Schaffner F, Elyazar IR, Teng HJ, Brady OJ,
723 Messina JP, Pigott DM, Scott TW, Smith DL, Wint GR, Golding N, Hay SI. 2015. The global
724 distribution of the arbovirus vectors Aedes aegypti and Ae. albopictus. *Elife* 4:e08347.
- 725 41. Manning JE, Oliveira F, Parker DM, Amaratunga C, Kong D, Man S, Sreng S, Lay S, Nang K,
726 Kimsan S, Sokha L, Kamhawi S, Fay MP, Suon S, Ruhl P, Ackerman H, Huy R, Wellems TE,
727 Valenzuela JG, Leang R. 2018. The PAGODAS protocol: pediatric assessment group of dengue
728 and Aedes saliva protocol to investigate vector-borne determinants of Aedes-transmitted
729 arboviral infections in Cambodia. *Parasit Vectors* 11:664.
- 730 42. Conway MJ, Londono-Renteria B, Troupin A, Watson AM, Klimstra WB, Fikrig E, Colpitts TM.
731 2016. Aedes aegypti D7 Saliva Protein Inhibits Dengue Virus Infection. *PLoS Negl Trop Dis*
732 10:e0004941.
- 733 43. Rastawicki W, Smietanska K, Rokosz N, Jagielski M. 2012. [Effect of multiple freeze-thaw
734 cycles on detection of IgA, IgG and IgM antibodies to selected bacterial antigens]. *Med Dosw*
735 *Mikrobiol* 64:79-85.

- 736 44. Pinsky NA, Huddleston JM, Jacobson RM, Wollan PC, Poland GA. 2003. Effect of multiple
737 freeze-thaw cycles on detection of measles, mumps, and rubella virus antibodies. *Clin Diagn*
738 *Lab Immunol* 10:19-21.
- 739 45. Shurrab FM, Al-Sadeq DW, Amanullah F, Younes SN, Al-Jighefee H, Younes N, Dargham SR,
740 Yassine HM, Abu Raddad LJ, Nasrallah GK. 2021. Effect of multiple freeze-thaw cycles on the
741 detection of anti-SARS-CoV-2 IgG antibodies. *J Med Microbiol* 70.
- 742 46. Peng Z, Ho MK, Li C, Simons FE. 2004. Evidence for natural desensitization to mosquito
743 salivary allergens: mosquito saliva specific IgE and IgG levels in children. *Ann Allergy Asthma*
744 *Immunol* 93:553-6.
- 745 47. Oliveira F, Traore B, Gomes R, Faye O, Gilmore DC, Keita S, Traore P, Teixeira C, Coulibaly CA,
746 Samake S, Meneses C, Sissoko I, Fairhurst RM, Fay MP, Anderson JM, Doumbia S, Kamhawi S,
747 Valenzuela JG. 2013. Delayed-type hypersensitivity to sand fly saliva in humans from a
748 leishmaniasis-endemic area of Mali is Th1-mediated and persists to midlife. *J Invest*
749 *Dermatol* 133:452-9.
- 750 48. Buezo Montero S, Gabrieli P, Montarsi F, Borean A, Capelli S, De Silvestro G, Forneris F,
751 Pombi M, Breda A, Capelli G, Arca B. 2020. IgG Antibody Responses to the *Aedes albopictus*
752 34k2 Salivary Protein as Novel Candidate Marker of Human Exposure to the Tiger Mosquito.
753 *Front Cell Infect Microbiol* 10:377.
- 754 49. Cardenas JC, Drame PM, Luque-Burgos KA, Berrio JD, Entrena-Mutis E, Gonzalez MU,
755 Carvajal DJ, Gutierrez-Silva LY, Cardenas LD, Colpitts TM, Mores CN, Londono-Renteria B.
756 2019. IgG1 and IgG4 antibodies against *Aedes aegypti* salivary proteins and risk for dengue
757 infections. *PLoS One* 14:e0208455.
- 758 50. Montiel J, Carbal LF, Tobon-Castano A, Vasquez GM, Fisher ML, Londono-Renteria B. 2020.
759 IgG antibody response against *Anopheles* salivary gland proteins in asymptomatic
760 *Plasmodium* infections in Narino, Colombia. *Malar J* 19:42.
- 761 51. Willen L, Milton P, Hamley JID, Walker M, Osei-Atweneboana MY, Volf P, Basanez MG,
762 Courtenay O. 2022. Demographic patterns of human antibody levels to *Simulium damnosum*
763 s.l. saliva in onchocerciasis-endemic areas: An indicator of exposure to vector bites. *PLoS*
764 *Negl Trop Dis* 16:e0010108.
- 765 52. Almagro Armenteros JJ, Tsirigos KD, Sonderby CK, Petersen TN, Winther O, Brunak S, von
766 Heijne G, Nielsen H. 2019. SignalP 5.0 improves signal peptide predictions using deep neural
767 networks. *Nat Biotechnol* 37:420-423.
- 768 53. Edgar RC. 2004. MUSCLE: a multiple sequence alignment method with reduced time and
769 space complexity. *BMC Bioinformatics* 5:113.
- 770 54. Altschul SF, Gish W, Miller W, Myers EW, Lipman DJ. 1990. Basic local alignment search tool.
771 *J Mol Biol* 215:403-10.
- 772 55. Wilgenbusch JC, Swofford D. 2003. Inferring evolutionary trees with PAUP*. *Curr Protoc*
773 *Bioinformatics* Chapter 6:Unit 6 4.
- 774 56. R Core Team. 2023. R: A language and environment for statistical computing., v4.3.1. R
775 Foundation for Statistical Computing, <http://www.R-project.org>.
- 776 57. Wickham H. 2016. ggplot2: Elegant Graphics for Data Analysis. Springer-Verlag New York.
- 777 58. Wei T, Simko V. 2021. R package 'corrplot': Visualization of a Correlation Matrix.
778 <https://github.com/taiyun/corrplot>. Accessed

779

780

781

782

783