

# Genomic Medicine Guidance: A Point-of-Care App for Heritable Thoracic Aortic Diseases

1 **Rohan Patil †<sup>1\*</sup>, Fatima Ashraf †<sup>2\*</sup>, Samer Abu Dayeh<sup>1</sup>, Siddharth K. Prakash<sup>1</sup>**

2 †These authors contributed equally to this work.

3 <sup>1</sup>Department of Internal Medicine, McGovern Medical School, University of Texas Health Science  
4 Center at Houston, Houston, Texas, USA

5 <sup>2</sup>McWilliams School of Bioinformatics, University of Texas Health Science Center at Houston,  
6 Houston, Texas, USA

7

## 8 **Correspondence:**

9 Siddharth K. Prakash, MD, PhD

10 McGovern Medical School

11 University of Texas Health Science Center at Houston

12 6431 Fannin Street, MSB 6.116, Houston, Texas 77030

13 [Siddharth.K.Prakash@uth.tmc.edu](mailto:Siddharth.K.Prakash@uth.tmc.edu)

14 713-500-7003

15 **Keywords: genomic medicine, point-of-care, thoracic aortic aneurysm, aortic dissection,**  
16 **decision support**

## 17 **Abstract**

18 Genetic testing can determine familial and personal risks for heritable thoracic aortic aneurysms and  
19 dissections (TAD). The 2022 ACC/AHA guidelines for TAD recommend management decisions  
20 based on the specific gene mutation. However, many clinicians lack sufficient comfort or insight to  
21 integrate genetic information into clinical practice. We therefore developed the Genomic Medicine  
22 Guidance (GMG) app, an interactive point-of care tool to inform clinicians and patients about TAD  
23 diagnosis, treatment, and surveillance. GMG is a REDCap-based app that combines publicly  
24 available genetic data and clinical recommendations based on the TAD guidelines into one  
25 translational education tool. TAD genetic information in GMG was sourced from the Montalcino  
26 Aortic Consortium, a worldwide collaboration of TAD centers of excellence, and the NIH genetic  
27 repositories ClinVar and ClinGen. The app streamlines data on the 13 most frequently mutated TAD  
28 genes with 2,286 unique pathogenic mutations that cause TAD so that users receive comprehensive  
29 recommendations for diagnostic testing, imaging, surveillance, medical therapy, preventative surgical  
30 repair, as well as guidance for exercise safety and management during pregnancy. The app output can  
31 be displayed in a clinician view or exported as an informative pamphlet in a patient-friendly format.  
32 The overall goal of the GMG app is to make genomic medicine more accessible to clinicians and  
33 patients, while serving as a unifying platform for research. We anticipate that these features will be  
34 catalysts for collaborative projects that aim to understand the spectrum of genetic variants that  
35 contribute to TAD.

## 36 **1 Introduction**

37 The global incidence of thoracic aortic dissections, 3 to 6 cases per 100,000 person-years, is almost  
38 certainly underestimated because up to half of individuals who experience a dissection die before  
39 reaching a hospital (1). In 2022, 7% of out-of-hospital deaths were caused by acute aortic dissections.  
40 In more than 20% of cases, a single genetic mutation that is frequently inherited can cause thoracic  
41 aortic aneurysms or dissections (TAD, 2). Genetic testing for TAD can lead to earlier recognition of  
42 patients who are at risk for acute aortic dissections and timely individualized interventions that can  
43 prevent deaths. Technological advances have made genetic testing more practical for clinical use (3,  
44 4). Gene-based management of TAD was codified in the recent ACC/AHA guidelines for aortic  
45 disease, which provide different recommendations for diagnosis, surveillance, and preventative aortic  
46 surgery depending on the mutated gene (5).

47 However, there are numerous barriers to implementing genetic information into routine clinical  
48 workflows (2). Genetic counseling services are not readily accessible to clinicians or patients. Many  
49 clinicians are not prepared to integrate genetic test results into clinical decision making. In a recent  
50 survey, more than 75% of cardiovascular genetic tests were ordered by providers who do not have  
51 formal training in clinical genetics (6). Due to these gaps in care, patients frequently do not receive  
52 appropriate pre- or post-test counseling to understand test results or adhere to guideline-based  
53 recommendations (7).

54 Point of care tools synthesize complex medical information to guide clinical decision making (8). In  
55 genomic medicine, point of care guidance can lead to more frequent and effective utilization of  
56 genetic information in clinical practice (9, 10, 11). To address genomic medicine care gaps related to  
57 TAD, we created Genomic Medicine Guidance (GMG), a point-of-care application that consolidates  
58 and clarifies evidence-based recommendations for clinical management of TAD based on genetic test  
59 results. Users who select a pathogenic mutation receive a comprehensive report that describes  
60 associated clinical features and recommendations for diagnosis, surveillance, medical therapies, and  
61 interventions. We illustrate how the features of the GMG app can lower barriers to integration of  
62 genomic concepts into clinical practice and improve the recognition and treatment of TAD.

## 63 **2 Materials and Methods**

### 64 **2.1 Project Design**

65 The GMG app was implemented in a version of Research Electronic Data Capture (REDCap) that is  
66 hosted at the McWilliams School of Biomedical Informatics at UTHealth Houston. REDCap is a  
67 secure, web-based application designed to support data capture for research studies, providing 1) an  
68 intuitive interface for validated data entry; 2) audit trails for tracking data manipulation and export  
69 procedures; 3) automated export procedures for seamless data downloads to common statistical  
70 packages; 4) procedures for importing data from external sources; and 5) a MySQL database server  
71 to facilitate data queries and retrieval. Curated variant information and clinical recommendations are  
72 stored in the MySQL database. The user interface is implemented in PHP, a robust and widely used  
73 scripting language. The database can be updated continuously by users who enter new variant data  
74 through the interface or by project managers who can upload bulk variant data using the data import  
75 tools in REDCap.

### 76 **2.2 App Code**

77 The GMG app is a custom PHP plugin that interacts with the REDCap framework to display, extract,  
78 add to, or modify the SQL database. The plugin sequentially queries the SQL database for gene and  
79 variant information or associated clinical content in response to user queries. The GMG plugin is

80 rendered in HTML, JavaScript (JS), and CSS. In particular, the app makes use of jQuery, a JS  
81 library. When a user directly interfaces with the JS selection fields, AJAX methods in jQuery are  
82 leveraged to dynamically load data in the background and update the display without reloading the  
83 entire web page. AJAX methods make use of built-in PHP developer functions in REDCap to query  
84 the database and return the appropriate information.

85 The tooltip class is used to display additional information about predefined terms such as acronyms  
86 when the user hovers the mouse pointer over text. Results can be formatted for viewing on different  
87 screens (phone, desktop, iPad) the Bootstrap v5.1.2 framework for CSS. We created download and  
88 print functions by customizing a PHP script that retrieves data from the SQL database and converts  
89 the data to PDF format using the dompdf package. The results file can be emailed to users using  
90 built-in REDCap functions.

## 91 **3 Results**

### 92 **3.1 GMG Data Structure**

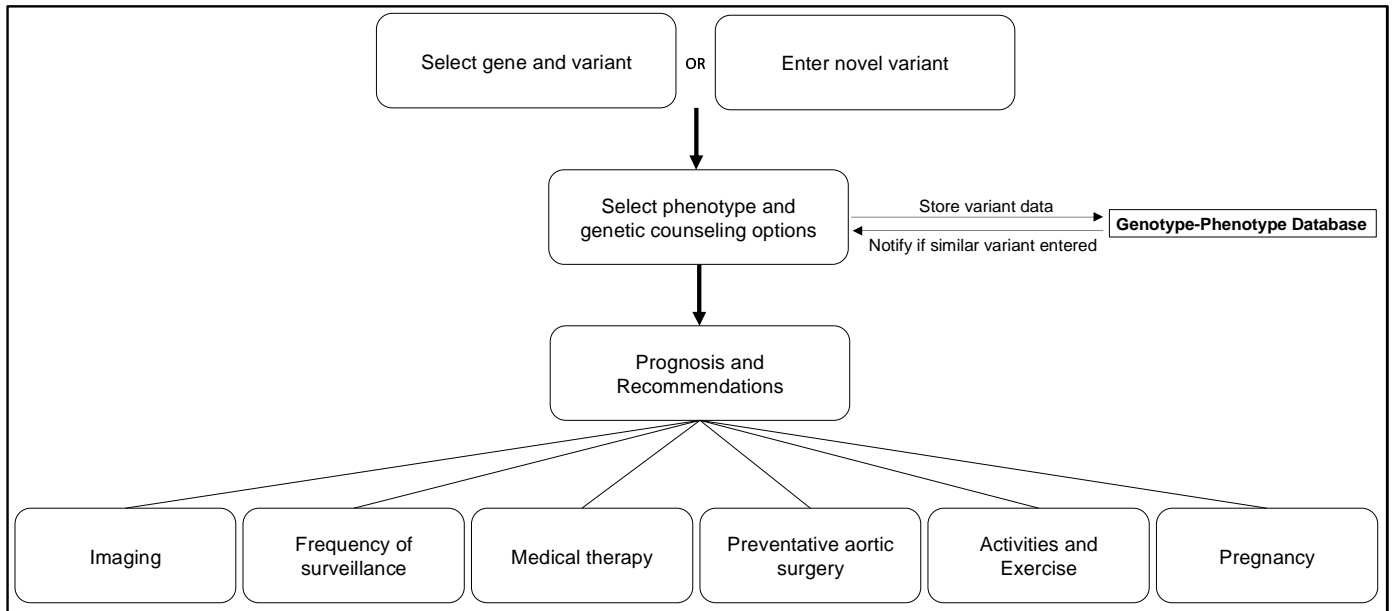
93 GMG data fields consist of the gene name, variant information, evidence for pathogenicity,  
94 associated clinical features, gene-specific diagnostic workup, variant-specific diagnostic workup,  
95 gene-specific surveillance, variant-specific surveillance, gene-specific medical therapy  
96 recommendations, gene-specific aortic intervention thresholds, guidance during pregnancy, and  
97 activity recommendations. New or revised data can be imported in a batch format using the REDCap  
98 import tool (Supplemental Data).

### 99 **3.2 GMG Genetic Content**

100 The GMG app currently includes data on 2,270 pathogenic and likely pathogenic variants in 13 TAD  
101 genes: ACTA2, PRKG1, TGFBR1, TGFBR2, SMAD3, MYLK, TGFB2, MYH11, FOXE3, LOX,  
102 MFAP5, COL3A1, and FBN1 (Table 1).

### 103 **3.3 User Workflow**

104 Users may freely access GMG at <https://go.uth.edu/GMG>. To facilitate point of care queries, the  
105 home page provides a prompt to select one HTAD gene and one variant from curated dropdown lists  
106 (Figure 1). Users may view sample test report forms from commercial genetic laboratories with  
107 highlighted variant information. After variant selection, users are required to verify the clinical  
108 features that prompted the genetic test and to attest that appropriate pre-test genetic counseling was  
109 provided. If users enter a variant that is not on the curated list, the app interface provides an option  
110 for them to upload the variant data and associated phenotypic information. The output tab describes  
111 the selected variant, including evidence for pathogenicity in ClinVar, clinical features associated with  
112 the variant, including lifetime risks for aortic surgery or dissection, and evidence-based clinical  
113 recommendations for diagnostic and surveillance imaging of the aorta, medical therapy, and size  
114 thresholds for elective aortic surgery. The recommendations are based on the 2022 ACC/AHA Aortic  
115 Disease guidelines. The app displays clinician and patient-friendly outputs in different browser tabs  
116 that can be printed, downloaded, or emailed in PDF format.



117

118 Figure 1. GMG app workflows. Users may select from a list of curated variants or enter a new variant  
119 in one of 13 TAD genes. The app is available at <https://go.uth.edu/GMG>.

### 120 3.4 Researcher Workflow

121 Researchers can enter new data into the GMG app or update current app data using REDCap data  
122 import tools. Batch genetic and clinical data for multiple gene variants can be uploaded  
123 simultaneously into the GMG genotype-phenotype database using a single data import template  
124 spreadsheet (Supplemental Data).

### 125 3.5 Genetic Counseling Content

126 GMG app users are required to verify that patients were appropriately selected for genetic testing and  
127 received counseling about the benefits, risks, and implications of genetic testing. Users can also  
128 access genetic counseling resources from within the app, including guidance to locate a genetic  
129 counselor for telehealth consultation. Additional links to the Marfan Foundation and the Montalcino  
130 Aortic Consortium, two advocacy groups with resources for newly diagnosed patients with TAD, are  
131 provided on the output page.

### 132 3.6 User Reviews

133 Thirty-eight GMG users completed a Qualtrics feedback survey about their experiences with the app.  
134 Users uniformly rated four components of the GMG app as very easy to use: the graphical interface  
135 (85/100), selection of a curated gene variant (87/100), understanding clinical recommendations  
136 (86/100), and entering a new clinical variant (89/100). Users also rated the clinical recommendations  
137 as extremely helpful for clinical guidance (90/100) and highly likely to influence their clinical  
138 practice (86/100). Users wrote that some genetic and clinical data in the app may be challenging for  
139 individuals who do not have formal training in genetics. They also submitted design  
140 recommendations to increase user engagement. Other suggestions included outreach to clinics and  
141 professional organizations to establish a user network and an instructional video to orient new users.

## 142 4 Discussion

143 Thoracic aortic aneurysms predispose to deadly aortic dissections without obvious physical signs or  
144 symptoms and are frequently inherited as single gene mutations. Genetic testing for TAD can  
145 identify affected relatives and save lives but is underutilized because genetic services are not  
146 available to many families who are at risk. In this report, we describe a new point-of-care app, GMG,  
147 that is intended to expand access to genetic information about genetic cardiovascular diseases  
148 including TAD. As reflected by user ratings, GMG simplifies the interpretation of genetic data for  
149 clinicians who do not have genetic expertise and provides valued clinical guidance based on the test  
150 result.

151 Several recent studies and a review of 20 clinical decision support tools for genomic medicine  
152 concluded that they improve risk assessment and lead to meaningful changes in clinical decisions  
153 (9,11). Examples of such tools include an app that synthesizes data on somatic mutations in tumors to  
154 target cancer therapies based on gene-specific prognosis (10). The Electronic Medical Records and  
155 Genomics (eMERGE) network integrates contextual decision support into the electronic medical  
156 record to streamline access to genetic testing (12).

157 GMG includes a genotype-phenotype database that will also promote collaborations by connecting  
158 providers who enter similar genetic variants to resolve variants of uncertain significance or build case  
159 series to elucidate new disease phenotypes. Crowdsourcing through GMG will expand the clinical  
160 and genetic content over time. Future versions of GMG will incorporate gene-based care guidance for  
161 other adult-onset genetic cardiovascular diseases that are primarily managed by non-expert clinicians,  
162 such as hyperlipidemias, cardiomyopathies, and channelopathies.

## 163 **5 Conclusions**

164 The GMG app expands access to genetic information in an era when most cardiovascular genetic  
165 tests are not supervised by genetic professionals. GMG will prevent deaths due to genetic  
166 cardiovascular diseases by promoting evidence-based guidelines for gene-based decision making and  
167 familial testing. The app also empowers patients to take an informed role in healthcare decisions.

## 168 **6 Conflict of Interest**

169 The authors declare that the research was conducted in the absence of any commercial or financial  
170 relationships that could be construed as a potential conflict of interest.

## 171 **7 Author Contributions**

172 RP: Data curation, Writing – Original Draft; SA: Data curation; FA: Resources, Software, Writing –  
173 Review & Editing; SP: Conceptualization, Supervision, Funding acquisition, Writing – Review &  
174 Editing.

## 175 **8 Funding**

176 This work was supported in part by UL1TR003167.

## 177 **9 Acknowledgments**

178 The authors are grateful to Dr. Elmer Bernstam for project oversight and support.

## 179 **10 References**

- 180 1. Zhou, Z., Cecchi, A. C., Prakash, S. K., & Milewicz, D. M. (2022). Risk Factors for Thoracic  
181 Aortic Dissection. *Genes*, 13(10), 1814–. <https://doi.org/10.3390/genes13101814>
- 182 2. Musunuru, K., Hershberger, R. E., Day, S. M., Klinedinst, N. J., Landstrom, A. P., Parikh, V.  
183 N., Prakash, S., Semsarian, C., & Sturm, A. C. (2020). Genetic Testing for Inherited  
184 Cardiovascular Diseases: A Scientific Statement From the American Heart Association.  
185 *Circulation. Genomic and Precision Medicine*, 13(4), e000067–e000067
- 186 3. Robin, N., Tabereaux, P., Benza, R., Korf, B. (2007). Genetic Testing in Cardiovascular  
187 Disease. *J Am Coll Cardiol*, Aug, 50 (8) 727–737.
- 188 4. Halbisen, A. L., & Lu, C. Y. (2023). Trends in Availability of Genetic Tests in the United  
189 States, 2012-2022. *Journal of personalized medicine*, 13(4), 638.  
190 <https://doi.org/10.3390/jpm13040638>
- 191 5. Isselbacher, E. M., Preventza, O., Black III, J. H., Augoustides, J. G., Beck, A. W., Bolen, M.  
192 A., Braverman, A. C., Bray, B. E., Brown-Zimmerman, M. M., Chen, E. P., Collins, T. J.,  
193 DeAnda, J., Fanola, C. L., Girardi, L. N., Hicks, C. W., Hui, D. S., Schuyler Jones, W.,  
194 Kalahasti, V., Kim, K. M., ... Woo, Y. J. (2022). 2022 ACC/AHA Guideline for the Diagnosis  
195 and Management of Aortic Disease: A Report of the American Heart Association/American  
196 College of Cardiology Joint Committee on Clinical Practice Guidelines. *Circulation (New*  
197 *York, N.Y.)*, 146(24), e334–e482. <https://doi.org/10.1161/CIR.0000000000001106>
- 198 6. Lopez Santibanez Jacome, L., Dellefave-Castillo, L. M., Wicklund, C. A., Scherr, C. L.,  
199 Duquette, D., Webster, G., Smith, M. E., Kalke, K., Gordon, A. S., De Berg, K., McNally, E.  
200 M., & Rasmussen-Torvik, L. J. (2022). Practitioners' Confidence and Desires for Education in  
201 Cardiovascular and Sudden Cardiac Death Genetics. *Journal of the American Heart*  
202 *Association*, 11(7), e023763–e023763. <https://doi.org/10.1161/JAHA.121.023763>
- 203 7. Samuel, G. N., Dheensa, S., Farsides, B. Fenwick, A., & Lucassen, A. (2017). Healthcare  
204 professionals' and patients' perspectives on consent to clinical genetic testing: moving towards  
205 a more relational approach, *BMC Med Ethics*. 18(47).
- 206 8. Ketchum, A. M., Saleh, A. A., & Jeong, K. (2011). Type of evidence behind point-of-care  
207 clinical information products: a bibliometric analysis. *Journal of medical Internet*  
208 *research*, 13(1), e21. <https://doi.org/10.2196/jmir.1539>
- 209 9. Sebastian, A., Carroll, J. C., Oldfield, L. E., Mighton, C., Shickh, S., Uleryk, E., & Bombard,  
210 Y. (2021). Effect of genetics clinical decision support tools on health-care providers' decision  
211 making: a mixed-methods systematic review. *Genetics in Medicine*, 23(4), 593–602.  
212 <https://doi.org/10.1038/s41436-020-01045-1>
- 213 10. Manolio, T. A., Chisholm, R. L., Ozenberger, B., Roden, D. M., Williams, M. S., Wilson, R.,  
214 Bick, D., Bottinger, E. P., Brilliant, M. H., Eng, C., Frazer, K. A., Korf, B., Ledbetter, D. H.,  
215 Lupski, J. R., Marsh, C., Mrazek, D., Murray, M. F., O'Donnell, P. H., Rader, D. J., ...  
216 Ginsburg, G. S. (2013). Implementing genomic medicine in the clinic: the future is here.  
217 *Genetics in Medicine*, 15(4), 258–267. <https://doi.org/10.1038/gim.2012.157>
- 218 11. Way, H., Williams, G., Hausman-Cohen, S., & Reeder, J. (2021). Genomics as a Clinical  
219 Decision Support Tool: Successful Proof of Concept for Improved ASD Outcomes. *Journal of*  
220 *Personalized Medicine*, 11(7), 596–. <https://doi.org/10.3390/jpm11070596>
- 221 12. McCarty, Catherine A et al. "The EMERGE Network: A Consortium of Biorepositories Linked  
222 to Electronic Medical Records Data for Conducting Genomic Studies." *BMC genomics* 4.1  
223 (2011): 13–13. Web.