





Kidane et al.

## 29 **ABSTRACT**

30 Background: Chronic rhinosinusitis (CRS) is characterized by persistent nasal and paranasal  
31 sinus mucosa inflammation. It comprises two phenotypes, namely CRS with nasal polyps  
32 (CRSwNP) and without (CRSsNP). CRSwNP can be associated with asthma and  
33 hypersensitivity to non-steroidal anti-inflammatory drugs (NSAIDs) in a syndrome known as  
34 NSAID-exacerbated respiratory disease (N-ERD). Furthermore, CRS frequently intertwines  
35 with respiratory allergies.

36 Objective: This study investigated the phenotypic characteristics of peripheral blood  
37 mononuclear cells (PBMCs) within cohorts of CRS patients, additionally examining the  
38 influence of comorbid respiratory allergies on these parameters.

39 Methods: 24 participants were grouped into controls, CRSsNP, CRSwNP, and N-ERD  
40 ( $n=6$ /group), with half of the patients in each group having respiratory allergies. Levels of  
41 cytokines were quantified in nasal secretions and sera. The abundance and phenotypic  
42 features of immune cells in PBMCs were evaluated through mass cytometry and clustering  
43 methods.

44 Results: N-ERD patients showed heightened type 2 nasal cytokine levels. Mass cytometry  
45 analysis revealed increased activated naive B cell levels in CRSwNP and N-ERD, while  
46 resting naive B cells were higher in CRSsNP. Th2a cell levels did not differ between CRS  
47 subtypes but were significantly elevated in allergic subjects. In CRSwNP and N-ERD  
48 patients, naive B cells had a lower CXCR5 and higher CD45RA expression, while NK cells  
49 displayed reduced CD56 levels.

50 Conclusions: There are distinct immunological features in PBMCs of CRS phenotypes and  
51 allergy, characterized by elevated resting naive B cells in CRSsNP, increased activated naive  
52 B cells in CRSwNP and N-ERD, and higher Th2a cell levels in allergic subjects.

53 Capsule summary: This study examines immunological profiles in different phenotypes of  
54 CRS with and without comorbid allergy patients, highlighting immune cell intricacies in CRS  
55 subtypes and immune differences in CRS and respiratory allergy.

56 Keywords: Chronic rhinosinusitis, allergy, mass cytometry, nasal cytokines, peripheral blood  
57 mononuclear cells, nasal polyps

58



Kidane et al.

## 59 ABBREVIATIONS

60 CCL: Chemokine (C-C Motif) Ligand

61 CD: Cluster of differentiation

62 CRS: Chronic rhinosinusitis

63 CRSsNP: Chronic rhinosinusitis without nasal polyps

64 CRSwNP: Chronic rhinosinusitis with nasal polyps

65 CyTOF: Cytometry by Time-Of-Flight

66 G-CSF: granulocyte-colony stimulating factor

67 GM-CSF: Granulocyte-macrophage colony-stimulating factor

68 Ig: Immunoglobulin

69 IL: Interleukin

70 IFN: Interferon

71 MMI: Median metal intensity

72 NSAIDs: Non-steroidal anti-inflammatory drugs

73 N-ERD: NSAIDs-exacerbated respiratory disease

74 opt-SNE: Optimized t-distributed stochastic neighbour embedding

75 PBMC: Peripheral blood mononuclear cells

76 SNOT-20: 20-item sinonasal outcome test

77 TNF: Tumour necrosis factor

78 TSLP: Thymic stromal lymphopoietin

79 VEGF: Vascular endothelial growth factor

80

81

82

83



Kidane et al.

## 84 1. INTRODUCTION

85 Chronic rhinosinusitis (CRS) is a complex disease characterized by persistent inflammation  
86 of nasal and paranasal sinus mucosa affecting 8-12% of the population <sup>1</sup>. Clinically, CRS is  
87 classified as CRS with nasal polyps (CRSwNP) or without nasal polyps (CRSsNP), with up  
88 to 15% of CRSwNP patients also demonstrating comorbid hypersensitivity to aspirin and  
89 other nonsteroidal anti-inflammatory drugs (NSAIDs) as well as asthma in a syndrome called  
90 NSAIDs-exacerbated respiratory disease (N-ERD)<sup>2</sup>. CRS is further classified into different  
91 endotypes based on inflammatory cell infiltrations and cytokine secretions in nasal tissues <sup>3</sup>.  
92 Of these endotypes, the type 2 endotype is predominantly observed in CRSwNP and N-ERD  
93 conditions in the Western world <sup>2,4-6</sup>. Respiratory allergy, another hallmark type 2 disease,  
94 affects up to 30% of the population <sup>7</sup>. CRS and respiratory allergy involve inflammation in the  
95 respiratory system and elevated IgE production, but the link between these two conditions is  
96 not yet clear <sup>8</sup>.

97 Numerous previous studies aiming to characterize various immune cell types in CRS and  
98 allergy <sup>9-18</sup> employed flow cytometry or immunohistochemistry-based techniques, albeit with  
99 limitations on the number of parameters that could be studied simultaneously. Although  
100 advancements in single-cell parametrization, driven by novel fluorophores and laser systems,  
101 have expanded our understanding of immune cell sub-classes and functional states, spectral  
102 overlap in fluorescence-based cytometry often renders comprehensive immune state analysis  
103 difficult <sup>19</sup>.

104 Mass cytometry, or cytometry by Time-Of-Flight (CyTOF®), offers a potential solution by  
105 using heavy-metal isotopes instead of fluorophores, enabling precise quantification of target  
106 expression with minimal signal overlap and providing a detailed snapshot of the immune  
107 state <sup>19</sup>. Thus, we used this technique to stain 38 immune cell surface markers simultaneously  
108 for in-depth immune profiling of peripheral blood mononuclear cells (PBMCs) in CRS  
109 patients. This study's primary objective was to analyse alterations in abundance and  
110 phenotypic characteristics of PBMCs in cohorts of CRS patients and disease controls.  
111 Importantly, each group contained an equal representation of patients with respiratory  
112 allergies, allowing us to distinguish whether the changes were exclusively linked to CRS or  
113 could be influenced by the allergic predisposition.

114



Kidane et al.

## 2. MATERIAL AND METHODS

### *2.1. Study subjects and sample collection*

Samples (Serum, nasal secretions, PBMCs) used in this study were taken from the CRS biobanks of the Department of Otorhinolaryngology, Medical University of Vienna, with the approval of the Ethical Committee of the Medical University of Vienna (EK Nr. 1492/2023). The biobanks also contained detailed clinical characteristics of the patients as shown in Table I and Supplementary Table E1.

### *2.2. Sample preparation*

Sera, nasal secretions, and PBMCs were prepared following established procedures and are outlined in detail in the online repository.

### *2.3. IgE measurement*

Allergen-specific IgE levels were measured in serum using the ALEX® Allergy Explorer assay (Allergy Explorer version 2, MacroArray Diagnostics, Vienna, Austria), encompassing over 280 allergen extracts and molecular allergens according to the manufacturer's instructions, which is briefly summarized in the online repository. A description of the main respiratory allergens used to determine a patient's allergic status in Fig. 1 of this manuscript is also provided in Supplementary Table E2.

### *2.4. Cytokine measurements*

Thirty-three cytokines were analysed in nasal secretions and sera for using the Meso Scale Discovery (MSD) multiplex U-Plex platform (MSD, Rockville, MA, USA) as described before<sup>20</sup>, and as outlined in the online repository.

### *2.5. Mass Cytometry: Staining and acquisition of PBMCs using MaxPAR® Immunoprofiling Assay and CyToF*

Before immunostaining PBMCs, the frozen cells underwent a careful thawing process, as described in the online repository. For immunostaining, the PBMCs were subjected to the MaxPAR Direct Immunoprofiling Assay (Standard BioTools, South San Francisco, CA, USA) supplemented with commercial and in-house labeled antibodies given in Supplementary Table E3 following the manufacturer's instructions. A brief description of the staining and acquisition procedure can be found in the online repository. A detailed protocol has been described elsewhere<sup>21</sup>.



Kidane et al.

## 2.6. Processing of Mass Cytometry Data Using Dimensionality Reduction and FlowSOM

A step-wise approach was followed for analysis: normalized raw data files were imported into Cytobank (Beckman Coulter, Brea, CA, USA), and then quality control was employed to remove undesired events (dead cells, debris, normalization beads, aggregates, and coincident ion clouds) by manually gating out beads and according to residual, center, offset, width, event length, and DNA intercalator signals in biaxial plots vs Time parameter using Gaussian discrimination, leaving viable cell events for downstream analysis.

After data clean-up, dimensionality reduction was performed using opt-SNE in Cytobank on gated live cells using 38 channels (refer to Supplementary Table E3) with the advanced settings left on the software's default.

The opt-SNE was then visually inspected to identify distinctive clusters. Then, FlowSOM clustering was performed on Cytobank (Beckman Coulter) utilizing the opt-SNE-reduced data as input. All the channels used for opt-SNE were also implemented in the FlowSOM analysis. Subsequently, clusters were further annotated based on characteristic marker expression patterns. Cell population/cluster percentage data across different groups and markers' median metal intensity (MMI) were exported to GraphPad prism (GraphPad Software, Boston, MA, USA) for a statistical analysis and graph output. Further information on opt-SNE and FlowSOM algorithm settings can be found on Cytobank's platform (cytobank.org).

## 2.7. Statistical Analysis

All statistical analyses were conducted using GraphPad Prism 9.5.1 (GraphPad Software). Cytokine values underwent a log transformation. Hierarchical clustering analysis of levels of cytokines and immune cell populations was performed using a heat-mapper with Spearman Rank Correlation as a distance measurement method<sup>22</sup>. Furthermore, data on the percentage of cell populations and marker expression were retrieved from Cytobank and subsequently imported into GraphPad Prism for comprehensive analysis.

Given the nature of the data distribution, non-parametric tests were employed for group comparisons. Specifically, the Mann-Whitney U test was utilized to evaluate differences between allergic and non-allergic individuals. To assess distinctions among the CRSsNP, CRSwNP, and N-ERD groups, the Kruskal-Wallis test was applied along with Dunn's test for



Kidane et al.

176 multiple comparisons. For all analyses, a significance level of  $p < 0.05$  was established as the  
177 threshold for statistical significance.  
178



Kidane et al.

## 2. RESULTS

### *3.1. Subject characteristics*

Demographic and clinical characteristics of the study cohorts are given in Table I. A total of 24 participants grouped into subjects without any signs of acute or chronic nasal inflammation=Controls ( $n=6$ ), CRSsNP ( $n=6$ ), CRSwNP ( $n=6$ ) and N-ERD ( $n=6$ ) were included in the study. Half of the cohorts in each group were known to have a respiratory allergy ( $n=3$  per group) or were not allergic ( $n=3$  per group). An individual overview of the patient characteristics is provided in Supplementary Table E1.

### *3.2. Immunological profiling of allergic and non-allergic cohorts based on allergen-specific IgE and cytokine levels*

Participants were categorised as allergic or non-allergic based on their clinical history and allergen-specific positive Skin Prick Test reaction or specific serum IgE levels by ALEX2 microarray. As shown in Fig. 1A, all patients (except two individuals with positive skin prick test only) classified as allergic based on their clinical history showed detectable ( $\geq 0.35$  kUA/L) specific serum IgE levels to at least one respiratory allergen.

Levels of 33 cytokines measured both in nasal secretions and serum showed no significant differences between allergic and non-allergic subjects (data not shown); exemplary type 2 cytokine levels are given for nasal secretions (Fig. 1B) and serum (Fig. 1C).

### *3.3. Cytokine profiling reveals distinct inflammatory patterns in nasal secretions of N-ERD, CRSsNP, and CRSwNP patients*

To determine differences in cytokine patterns in patients suffering from various CRS disease entities compared to disease controls, hierarchical clustering analysis of cytokine levels in nasal secretion (Fig. 2A) and serum (Fig. 2B) was performed. In nasal secretions, we found a clustering of type 2 associated cytokines CCL17, Eotaxin, Eotaxin-3, IL-5 and IL-13, which were highly upregulated in N-ERD patients but also elevated in CRSwNP patients. Individual cytokine analysis confirmed that N-ERD patients showed significantly elevated levels of IL-5 compared to the Control ( $p=0.0423$ ) and CRSsNP ( $p=0.0423$ ) groups. Similarly, there were significantly higher levels of IL-9 ( $p=0.0018$ ), CCL17 ( $p=0.0225$ ), Eotaxin (0.0076), and Eotaxin-3 ( $p=0.0049$ ) in N-ERD patients in comparison to CRSsNP (Fig. 2C). In contrast to nasal secretions, no significant differences in cytokine levels were observed in sera of the patients between groups (Fig. 2D).



Kidane et al.

### 3.4. High-resolution immune profiling by mass cytometry reveals significantly higher numbers of Th2a cells in the blood of allergic subjects but not of patients suffering from CRS

To get an insight into the immune cell subsets associated with CRS as well as allergic diseases, high-resolution immune profiling was conducted in PBMCs of the participants ( $n=22$ ) by mass cytometry. Two patients in the CRSwNP allergic group were excluded from the analysis due to insufficient cell numbers for in-depth analysis. Mass cytometry data, coupled with dimensionality reduction techniques (Fig. 3A) and unbiased automated clustering analyses by FlowSOM, was conducted and showed clear separation of cell populations based on canonical markers as exemplified in Fig. 3A. As shown in Fig. 3B and Fig. 3C clusters of immune cells, encompassing natural killer (NK), natural killer T (NKT), mucosal-associated invariant T (MAIT), CD4<sup>+</sup> T (CD4 T), Regulatory T (T-reg), CD8<sup>+</sup> T (CD8 T), Gamma-Delta T ( $\gamma\delta$  T), Memory B (Memory B), Naive B (Naive B), Plasmablasts (Plasmas), Monocytes, myeloid Dendritic cells (mDCs), and plasmacytoid Dendritic cells (pDCs) in the different disease entities. Differential abundance analysis to quantify immune cell subpopulations revealed only a slight trend towards increased levels of T-reg and Th2 cells in the PBMCs of CRSsNP and N-ERD patients (Supplementary Fig. E1). No significant alterations in the other cell types were identified between the disease groups (Fig. 3D).

As Th2a cells have previously been described to be elevated in the blood of allergic subjects<sup>23</sup>, we next investigated if they were also elevated in CRS subtypes with strong type 2 profile. To that aim, we manually gated the subpopulation of Th2a cells based on established surface marker expression (CD27<sup>-</sup>CD45RB<sup>-</sup>CD161<sup>+</sup>CRTH2/CD294<sup>+</sup>CD49d<sup>24</sup>) within PBMCs (Fig. 3E). Despite being a relatively small fraction of the total PBMC population, the Th2a immune cell subset exhibited a notable increase in allergic individuals ( $p=0.0133$ ). Intriguingly, when comparing these cells within the CRS groups, no significant changes were observed ( $p=0.7650$ ) (Fig. 3E). As shown in Supplementary Fig. E2, no differences were seen when CRS and allergy status stratified the data.

### 3.5. Comprehensive profiling of B cell subpopulations using FlowSOM analysis

Given the pivotal role of B cells in the pathophysiology of both CRS and allergic conditions, we conducted an extensive analysis of B cell populations (Fig. 4) within PBMCs. This analysis was performed using an automated assessment of marker expression profiles via FlowSOM leading to identification of ten distinct B-cell metaclusters (B1-B10) (Fig. 4A).



Kidane et al.

Notably, several markers, including CD45RB, CCR6, CD11c, CD27, CXCR5, CD38, CD49d, HLA-DR, CD11b, and CD20 exhibited differential expression within the B cell population, giving rise to these uniquely defined metaclusters (Fig. 4B).

Broadly, the metaclusters consisted of naïve B cells, characterized by CD27<sup>-</sup> (Fig. 4B) (specifically B1, B2, B3, B7 & B10), and memory B cells, characterized by CD27<sup>+</sup> (including B4, B5, B6, B8 & B9), among which B4 and B9 displayed high CD38<sup>+</sup> expression and thus are putative plasmablasts. As illustrated in Fig. 4C-F, the metaclusters were differently sized, with B1, a naïve B cell metacluster, constituting approximately 60% of the total B cell population in control subjects. In contrast, B7, another type of naïve B cell distinguished by CD11b surface marker, accounted for just 0.4% of the B cell population in control subjects.

To investigate potential differences, we conducted an abundance analysis of the identified B cell metaclusters across various groups: Control, CRSsNP, CRSwNP, and N-ERD, as well as allergic and non-allergic subjects (Fig. 4C-F). Notably, metaclusters B1 and B2 (representing naïve B cells marked by higher expression of CCR6 and CXCR5) showed a trend towards increased levels in CRSsNP patients, which reached statistical significance for B1 cells as compared to N-ERD patients ( $p=0.0231$ ). Conversely, N-ERD and CRSwNP groups showed a significantly increased frequency of B3 (naïve B cell with low expression of CCR6) compared to CRSsNP (N-ERD-CRSsNP:  $p=0.0141$ , CRSwNP-CRSsNP:  $p=0.0266$ ) (Fig. 4C).

A more in-depth analysis of the abundance in the context of allergy (Fig. 4D-F; Supplementary Fig. E3) revealed that B3 was not increased in allergic subjects, indicating that the observed increase in the naïve B1, B2, and B3 frequency was solely due to the underlying CRS disease. Allergic subjects, however, had a decreased frequency of memory B-cell metaclusters B4 ( $p=0.0169$ ), B6 ( $p=0.0206$ ), B9 ( $p=0.0426$ ), and naïve B cell metacluster B10 ( $p=0.0249$ ), as compared to non-allergic subjects.

### *3.6. Immunophenotypic distinctions in B cell subtypes illuminate unique features of N-ERD derived B cells*

We further analysed surface marker expression levels in B cell metaclusters of the three CRS disease groups. N-ERD and CRSsNP patients showed a trend towards elevated median metal intensity (MMI) levels of the differentiation marker CD45RA across all B cell metaclusters, which reached a significant difference in B10 of CRSsNP compared to Control ( $p=0.0082$ ).



Kidane et al.

Conversely, N-ERD patients displayed decreased levels of CXCR5 expression in all B cell metaclusters B1 to B10 when compared to Control, CRSsNP, and CRSwNP groups (Fig. 5B), yet differences were not statistically significant ( $p>0.05$ ). Similarly, N-ERD patients exhibited a significantly decreased expression of CD49d ( $p= 0.0402$ ) in B9 metacluster relative to the Control (Fig. 5B). Overall, these findings highlight distinct immunophenotypic changes in B cell subtypes in N-ERD patients, characterized by elevated CD45RA expression and reduced levels of CXCR5 and CD49d.

Furthermore, we analysed the MMI in B cell metaclusters in allergic and non-allergic individuals. The expression levels were comparable between the two groups across most B cell metaclusters, except for B7, where expression levels of CD49d were significantly higher in non-allergic as compared to allergic patients ( $p= 0.0138$ ) (Supplementary Fig. E4).

### *3.7.Heterogeneity in Natural Killer (NK) Cell Populations in CRSsNP, N-ERD, and allergic individuals*

Another focus of this study was exploring the heterogeneity of Natural Killer (NK) cell populations in the study cohorts as NK cell dysfunction has previously been reported in CRS<sup>25</sup>. The NK metaclusters were characterized based on their surface marker expression profiles (Fig. 6A and B). They revealed four distinct NK metaclusters, Late-stage (LS) NK1, LS NK2, Early-stage (ES) NK1, and ES NK2, in the PBMCs. While no significant differences in abundance were observed between the CRSsNP, CRSwNP, N-ERD, and Control ( $p>0.05$ ) (Fig. 6C), an increased frequency of LS NK2 cells was noted in non-allergic individuals compared to allergic individuals ( $p=0.0215$ ). Additionally, expression levels of CD45RA and CD56 within different NK metaclusters exhibited variations in the context of CRSsNP, CRSwNP, and N-ERD (Fig. 6E). Overall, both CRSsNP and N-ERD groups demonstrated elevated levels of CD45RA across all metaclusters, with LS NK1 exhibiting a statistically significant increase in CRSsNP versus control ( $p=0.0306$ ). Similarly, CRSsNP groups showed an elevated level of median CD56 intensity, which showed significant differences in ES NK 1 cells compared to CRSwNP patients ( $p=0.0323$ ).



Kidane et al.

#### 4. DISCUSSION

Here, we conducted a detailed analysis of immune cell profiles in PBMCs of patients suffering from various forms of CRS: CRSsNP, CRSwNP, and N-ERD, with a further distinction in patients with and without respiratory allergies.

Using a panel comprising 33 different cytokines, we found elevated concentrations of type 2-associated cytokines, including CCL17, Eotaxin, Eotaxin-3, IL-5, and IL-9, in nasal secretions of CRSwNP patients with the highest levels observed in N-ERD patients. This agrees with earlier reports of CRSwNP and especially N-ERD being dominated by type 2-driven inflammatory conditions in the Western world <sup>2,4-6</sup>. CRSsNP patients showed a more mixed pattern of type 1 and type 3 endotypes and strong inter-individual differences in accordance with previous reports <sup>2,4-6</sup>.

Our main objective in this study was to investigate differences in levels and characteristics of various immune cell types within CRS using mass cytometry. With regards to T cell subpopulations, we detected no significant differences in peripheral blood. Though mass cytometry has recently revealed differences in nasal polyp-derived T cell subsets with a higher percentage of CD161<sup>hi</sup> CXCR3<sup>lo</sup> expressing T helper cells in nasal polyps as compared to control tissues <sup>26</sup>, we only detected a trend towards elevated Th2 cell levels in blood of CRSwNP patients and N-ERD patients, which did not reach significance. The lack of difference in Th2 cell numbers between different patient groups has also been observed using flow cytometry approaches <sup>27</sup>.

To the best of our knowledge, we are the first to identify Th2a cells based on the expression of CRTH2, CD161, CD49d and CD27 in the blood of patients using mass cytometry. This Th2 subset was initially described by Wambre et al as associated with allergic disease status <sup>23</sup> and recently put forward as a candidate for monitoring success during immunotherapy for food <sup>28</sup> or respiratory allergens <sup>29</sup>. Interestingly, we found no differences in Th2a levels between CRS entities but significantly increased levels in allergic versus non-allergic patients regardless of their CRS status. Our observation that allergic patients had significantly elevated levels of Th2a cells despite being a heterogeneous group with various levels of specific IgE against different allergen sources, from tree to animal, implicates Th2a levels as a potentially universal biomarker and therapeutic target for allergic disease <sup>30</sup>.

Eosinophils have long been regarded as main drivers of CRSwNP. However, with the introduction and success of anti-IgE and anti-IL4/IL-13 antibodies in treating severe disease



Kidane et al.

<sup>31</sup>, B cells have also been attributed to an important role in pathogenesis <sup>32, 33</sup>. In this line, it has been shown that chronic airway inflammation creates an environment well-suited for B cell differentiation <sup>34</sup> and that the nasal mucosa of CRS shows elevated levels of naïve B cells, memory B cells and plasma cells, with the highest number observed in CRSwNP patients <sup>35,36</sup>. In the blood of CRS patients, we did not observe differences in major B cell subsets, which is in agreement with previous data <sup>35</sup>. Thus, we performed a deeper characterization employing an unsupervised high-resolution profiling approach using FlowSOM. This enabled us to distinguish ten distinct B cells subtypes based on the expression of phenotypic markers, including CD45RB, CD27, CXCR5, CD38, CD49d, HLA-DR, CD19, and CD20. Though not significant, we observed in CRSsNP patients a trend towards elevated levels of B1 and B2 metaclusters, which show characteristics of resting naïve B cells (CD27<sup>+</sup>CD38<sup>+</sup>IgD<sup>+</sup>) <sup>37</sup>. N-ERD patients, on the other hand, displayed a significantly increased frequency of B3, another subset of naïve B cells characterized by the absence of CD27 and CD38 expression but positive for IgD. These cells can be identified as putative "mature-naïve" <sup>38</sup> or "activated naïve" <sup>37</sup> B cells. Additionally, B-cells of CRS patients showed a trend towards reduced levels of the chemokine receptor CXCR5 and the integrin CD49d in selected metaclusters, which are both involved in establishing and maintaining optimal germinal center reactions <sup>39,40</sup>. These findings are interesting in light of previous observations that IgE-secreting cells from nasal polyps are mainly guided to extrafollicular pathways <sup>34,41</sup>. In summary, it is compelling to speculate that blood-borne activated naïve B cells, enriched in N-ERD patients, may migrate to extrafollicular structures within the nasal polyp, where they may further differentiate into antibody-producing cells <sup>33</sup>.

NK cell dysfunction has also been observed in CRS patients with decreased effector function being associated with increased eosinophilic inflammation <sup>42</sup> and disease severeness <sup>43</sup>. In this context, we observed reduced expression of the phenotypic NK cell activation marker CD56 <sup>44,45</sup> in CRSwNP patients. As CD56-negative NK cell subsets are enriched in patients with chronic virus infections <sup>46,47</sup>, it is conceivable that the loss of CD56 observed in our study could be at least partly driven by the repeated infections in the course of CRS.

In patients suffering from respiratory allergies, we observed significantly reduced levels of late-stage NK cells expressing CD16 regardless of their allergic status. However, there were no differences in the CD56<sup>+</sup>CD16<sup>+</sup> subsets as previously described in peanut-allergic subjects <sup>48</sup> or subjects suffering from atopic dermatitis <sup>49</sup>. Our differential results could be both due to



Kidane et al.

the different routes of allergen sensitization or due to the absence of allergen restimulation in our experimental design as compared to Zhou et al.<sup>48</sup>

Limitations of our study include the relatively small sample size with regard to different CRS subtypes and the absence of nasal mucosa samples. It could also be that the often discussed lower sensitivity of mass cytometry<sup>50</sup> as compared to flow cytometry may have had an impact on our results. However, a recent report showed the comparability between the two techniques with regard to T cell subsets<sup>26</sup>.

In conclusion, this study provided a comprehensive analysis of blood-derived immune cell profiles in various forms of CRS and allergic patients. Notably, an increased presence of Th2a cells, pivotal in allergic responses, was observed in allergic cohorts. Further, our analysis of B and NK cell populations identified distinct subtypes with potential implications for both type 2 diseases. These findings contribute to a deeper understanding of the immunological profiles in PBMCs of patients with CRS or allergy, shedding light on potential avenues for further research and therapeutic approaches.



Kidane et al.

## 5. REFERENCES

1. Fokkens, W.J., Lund, V.J., Hopkins, C., Hellings, P.W., Kern, R., Reitsma, S., Toppila-Salmi, S., Bernal-Sprekelsen, M., Mullol, J., Alobid, I., et al. (2020). European Position Paper on Rhinosinusitis and Nasal Polyps 2020.
2. Kato, A., Peters, A.T., Stevens, W.W., Schleimer, R.P., Tan, B.K., and Kern, R.C. (2022). Endotypes of chronic rhinosinusitis: Relationships to disease phenotypes, pathogenesis, clinical findings, and treatment approaches. *Allergy* 77, 812-826. 10.1111/all.15074.
3. Liao, B., Liu, J.X., Li, Z.Y., Zhen, Z., Cao, P.P., Yao, Y., Long, X.B., Wang, H., Wang, Y., Schleimer, R., and Liu, Z. (2018). Multidimensional endotypes of chronic rhinosinusitis and their association with treatment outcomes. *Allergy* 73, 1459-1469. 10.1111/all.13411.
4. Tomassen, P., Vandeplas, G., Van Zele, T., Cardell, L.-O., Arebro, J., Olze, H., Förster-Ruhrmann, U., Kowalski, M.L., Olszewska-Zięber, A., Holtappels, G., et al. (2016). Inflammatory endotypes of chronic rhinosinusitis based on cluster analysis of biomarkers.
5. Wang, X., Zhang, N., Bo, M., Holtappels, G., Zheng, M., Lou, H., Wang, H., Zhang, L., and Bachert, C. (2016). Diversity of T(H) cytokine profiles in patients with chronic rhinosinusitis: A multicenter study in Europe, Asia, and Oceania. *J Allergy Clin Immunol* 138, 1344-1353. 10.1016/j.jaci.2016.05.041.
6. Tan, B.K., Klingler, A.I., Poposki, J.A., Stevens, W.W., Peters, A.T., Suh, L.A., Norton, J., Carter, R.G., Hulse, K.E., Harris, K.E., et al. (2017). Heterogeneous inflammatory patterns in chronic rhinosinusitis without nasal polyps in Chicago, Illinois. *J Allergy Clin Immunol* 139, 699-703 e697. 10.1016/j.jaci.2016.06.063.
7. Valenta, R., Karaulov, A., Niederberger, V., Gattlinger, P., van Hage, M., Flicker, S., Linhart, B., Campana, R., Focke-Tejkl, M., Curin, M., et al. (2018). Molecular Aspects of Allergens and Allergy. *Adv Immunol* 138, 195-256. 10.1016/bs.ai.2018.03.002.
8. Marcus, S., DelGaudio, J.M., Roland, L.T., and Wise, S.K. (2019). Chronic Rhinosinusitis: Does Allergy Play a Role? *Med Sci (Basel)* 7. 10.3390/medsci7020030.
9. Agache, I., Rocha, C., Beltran, J., Song, Y., Posso, M., Sola, I., Alonso-Coello, P., Akdis, C., Akdis, M., Canonica, W., et al. (2020). Efficacy and safety of treatment with biologicals (benralizumab, dupilumab and omalizumab) for severe allergic asthma. *Allergy*. 10.1111/all.14235.
10. Eckl-Dorna, J., Pree, I., Reisinger, J., Marth, K., Chen, K.W., Vrtala, S., Spitzauer, S., Valenta, R., and Niederberger, V. (2012). The majority of allergen-specific IgE in the blood of allergic patients does not originate from blood-derived B cells or plasma cells. *Clin Exp Allergy* 42, 1347-1355. 10.1111/j.1365-2222.2012.04030.x.
11. Wachholz, P.A., Nouri-Aria, K.T., Wilson, D.R., Walker, S.M., Verhoef, A., Till, S.J., and Durham, S.R. (2002). Grass pollen immunotherapy for hayfever is associated with increases in local nasal but not peripheral Th1:Th2 cytokine ratios. *Immunology* 105, 56-62.
12. Sharma, S., Watanabe, S., Sivam, A., Wang, J., Neuwirth, S.J., Perez, R.I., De Tineo, M., Baroody, F.M., Naclerio, R.M., and Pinto, J.M. (2012). Peripheral blood and tissue T regulatory cells in chronic rhinosinusitis. *Am J Rhinol Allergy* 26, 371-379. 10.2500/ajra.2012.26.3800.
13. Tsuda, T., Suzuki, M., Kato, Y., Kidoguchi, M., Kumai, T., Fujieda, S., and Sakashita, M. (2023). The current findings in eosinophilic chronic rhinosinusitis. *Auris Nasus Larynx*. 10.1016/j.anl.2023.08.002.
14. Delemarre, T., and Bachert, C. (2023). Neutrophilic inflammation in chronic rhinosinusitis. *Curr Opin Allergy Clin Immunol* 23, 14-21. 10.1097/ACI.0000000000000868.
15. Kato, A., Schleimer, R.P., and Bleier, B.S. (2022). Mechanisms and pathogenesis of chronic rhinosinusitis. *J Allergy Clin Immunol* 149, 1491-1503. 10.1016/j.jaci.2022.02.016.
16. Shamji, M.H., Bellido, V., Scadding, G.W., Layhadi, J.A., Cheung, D.K., Calderon, M.A., Asare, A., Gao, Z., Turka, L.A., Tchao, N., et al. (2015). Effector cell signature in peripheral blood



Kidane et al.

- following nasal allergen challenge in grass pollen allergic individuals. *Allergy* 70, 171-179. 10.1111/all.12543.
17. Ickrath, P., Kleinsasser, N., Ding, X., Ginzkey, C., Beyersdorf, N., Hagen, R., Kerkau, T., and Hackenberg, S. (2017). Characterization of T-cell subpopulations in patients with chronic rhinosinusitis with nasal polyposis. *Allergy Rhinol (Providence)* 8, 139-147. 10.2500/ar.2017.8.0214.
18. Miljkovic, D., Bassiouni, A., Cooksley, C., Ou, J., Hauben, E., Wormald, P.J., and Vreugde, S. (2014). Association between group 2 innate lymphoid cells enrichment, nasal polyps and allergy in chronic rhinosinusitis. *Allergy* 69, 1154-1161. 10.1111/all.12440.
19. Hartmann, F.J., and Bendall, S.C. (2020). Immune monitoring using mass cytometry and related high-dimensional imaging approaches. *Nat Rev Rheumatol* 16, 87-99. 10.1038/s41584-019-0338-z.
20. Schneider, S., Poglitsch, K., Morgenstern, C., Quint, T., Gangl, K., Sinz, C., Bartosik, T., Campion, N.J., Liu, D.T., Landegger, L.D., et al. (2023). Dupilumab increases aspirin tolerance in NSAID-exacerbated respiratory disease. *Eur Respir J* 61. 10.1183/13993003.01335-2022.
21. Rocha-Hasler, M., Muller, L., Wagner, A., Tu, A., Stanek, V., Campion, N.J., Bartosik, T., Zghaebi, M., Stoshikj, S., Gompelmann, D., et al. (2022). Using mass cytometry for the analysis of samples of the human airways. *Front Immunol* 13, 1004583. 10.3389/fimmu.2022.1004583.
22. Babicki, S., Arndt, D., Marcu, A., Liang, Y., Grant, J.R., Maciejewski, A., and Wishart, D.S. (2016). Heatmapper: web-enabled heat mapping for all. *Nucleic Acids Res* 44, W147-153. 10.1093/nar/gkw419.
23. Wambre, E.R.G., DeLong, J.H., James, E.A., Robinson, D., and Kwok, W.W. (2012). TH2A Cells As a Unique TH2 Cell Subset in Allergic Individuals: Steps Toward a T Cell Biomarker For Allergy.
24. Wambre, E., Bajzik, V., DeLong, J.H., O'Brien, K., Nguyen, Q.A., Speake, C., Gersuk, V.H., DeBerg, H.A., Whalen, E., Ni, C., et al. (2017). A phenotypically and functionally distinct human TH2 cell subpopulation is associated with allergic disorders. *Sci Transl Med* 9. 10.1126/scitranslmed.aam9171.
25. Kaczmarek, M., Wasicka, K., Tin-Tsen Chou, J., Popowicz, P., Rzetelska, Z., Lagiedo-Zelazowska, M., Piwowarczyk, K., and Leszczynska, M. (2020). NK cells in patients with chronic rhinosinusitis show decreased maturity and limited expression of functional receptors. *Immunobiology* 225, 151890. 10.1016/j.imbio.2019.11.025.
26. Bartemes, K.R., Choby, G., O'Brien, E.K., Stokken, J.K., Pavelko, K.D., and Kita, H. (2021). Mass cytometry reveals unique subsets of T cells and lymphoid cells in nasal polyps from patients with chronic rhinosinusitis (CRS). *Allergy* 76, 2222-2226. 10.1111/all.14720.
27. Polasky, C., Loyal, K., Idel, C., Wetterauer, D., Heidemann, M., Bruchhage, K.L., and Pries, R. (2021). Alteration of blood monocyte subsets in chronic rhinosinusitis with regard to anti-inflammatory 1,8-Cineol treatment. *Rhinology Online* 4, 194-202. 10.4193/rhinol/21.032.
28. Hardy, L.C., Smeekens, J.M., and Kulis, M.D. (2019). Biomarkers in Food Allergy Immunotherapy. *Curr Allergy Asthma Rep* 19, 61. 10.1007/s11882-019-0894-y.
29. Luce, S., Batard, T., Bordas-Le Floch, V., Le Gall, M., and Mascarell, L. (2021). Decrease in CD38(+) TH2A cell frequencies following immunotherapy with house dust mite tablet correlates with humoral responses. *Clin Exp Allergy* 51, 1057-1068. 10.1111/cea.13891.
30. Huang, Z., Chu, M., Chen, X., Wang, Z., Jiang, L., Ma, Y., and Wang, Y. (2022). Th2A cells: The pathogenic players in allergic diseases. *Front Immunol* 13, 916778. 10.3389/fimmu.2022.916778.
31. Striz, I., Golebski, K., Strizova, Z., Loukides, S., Bakakos, P., Hanania, N.A., Jesenak, M., and Diamant, Z. (2023). New insights into the pathophysiology and therapeutic targets of asthma and comorbid chronic rhinosinusitis with or without nasal polyposis. *Clin Sci (Lond)* 137, 727-753. 10.1042/CS20190281.



Kidane et al.

32. Kariyawasam, H.H., and James, L.K. (2021). Do B cells rather than eosinophils drive chronic rhinosinusitis with nasal polyps? *Lancet Respir Med* 9, e97. 10.1016/S2213-2600(21)00223-X.
33. Buchheit, K.M., Dwyer, D.F., Ordoñas-Montanes, J., Katz, H.R., Lewis, E., Vukovic, M., Lai, J., Bankova, L.G., Bhattacharyya, N., Shalek, A.K., et al. (2020). IL-5Rα marks nasal polyp IgG4- and IgE-expressing cells in aspirin-exacerbated respiratory disease. *J Allergy Clin Immunol* 145, 1574-1584. 10.1016/j.jaci.2020.02.035.
34. Feldman, S., Kasjanski, R., Poposki, J., Hernandez, D., Chen, J.N., Norton, J.E., Suh, L., Carter, R.G., Stevens, W.W., Peters, A.T., et al. (2017). Chronic airway inflammation provides a unique environment for B cell activation and antibody production. *Clin Exp Allergy* 47, 457-466. 10.1111/cea.12878.
35. Psaltis, A.J., Schlosser, R.J., Yawn, J.R., Henriquez, O., and Mulligan, J.K. (2013). Characterization of B-cell subpopulations in patients with chronic rhinosinusitis. *Int Forum Allergy Rhinol* 3, 621-629. 10.1002/alr.21173.
36. Miljkovic, D., Psaltis, A., Wormald, P.J., and Vreugde, S. (2018). Naive and effector B-cell subtypes are increased in chronic rhinosinusitis with polyps. *Am J Rhinol Allergy* 32, 3-6. 10.2500/ajra.2018.32.4496.
37. Satitsuksanoa, P., Iwasaki, S., Boersma, J., Imam, M.B., Schneider, S.R., Chang, I., van de Veen, W., and Akdis, M. (2023). B cells: The many facets of B cells in allergic diseases. *J Allergy Clin Immunol* 152, 567-581. 10.1016/j.jaci.2023.05.011.
38. Kaminski, D.A., Wei, C., Qian, Y., Rosenberg, A.F., and Sanz, I. (2012). Advances in human B cell phenotypic profiling. *Front Immunol* 3, 302. 10.3389/fimmu.2012.00302.
39. Wu, B.X., Zhao, L.D., and Zhang, X. (2019). CXCR4 and CXCR5 orchestrate dynamic germinal center reactions and may contribute to the pathogenesis of systemic lupus erythematosus. *Cell Mol Immunol* 16, 724-726. 10.1038/s41423-019-0244-y.
40. Yoon, S.O., Lee, I.Y., Zhang, X., Zapata, M.C., and Choi, Y.S. (2014). CD9 may contribute to the survival of human germinal center B cells by facilitating the interaction with follicular dendritic cells. *FEBS Open Bio* 4, 370-376. 10.1016/j.fob.2014.04.001.
41. Corrado, A., Ramonell, R.P., Woodruff, M.C., Tipton, C., Wise, S., Levy, J., DelGaudio, J., Kuruvilla, M.E., Magliocca, K.R., Tomar, D., et al. (2021). Extrafollicular IgD+ B cells generate IgE antibody secreting cells in the nasal mucosa. *Mucosal Immunol* 14, 1144-1159. 10.1038/s41385-021-00410-w.
42. Kim, J.H., Choi, G.E., Lee, B.J., Kwon, S.W., Lee, S.H., Kim, H.S., and Jang, Y.J. (2016). Natural killer cells regulate eosinophilic inflammation in chronic rhinosinusitis. *Sci Rep* 6, 27615. 10.1038/srep27615.
43. Kim, J.H., Kim, G.E., Cho, G.S., Kwon, H.J., Joo, C.H., Kim, H.S., and Jang, Y.J. (2013). Natural killer cells from patients with chronic rhinosinusitis have impaired effector functions. *PLoS One* 8, e77177. 10.1371/journal.pone.0077177.
44. Van Acker, H.H., Capsomidis, A., Smits, E.L., and Van Tendeloo, V.F. (2017). CD56 in the Immune System: More Than a Marker for Cytotoxicity? *Front Immunol* 8, 892. 10.3389/fimmu.2017.00892.
45. Vukicevic, M., Chalandon, Y., Helg, C., Matthes, T., Dantin, C., Huard, B., Chizzolini, C., Passweg, J., and Roosnek, E. (2010). CD56bright NK cells after hematopoietic stem cell transplantation are activated mature NK cells that expand in patients with low numbers of T cells. *Eur J Immunol* 40, 3246-3254. 10.1002/eji.200940016.
46. Björkstén, N.K., Ljunggren, H.G., and Sandberg, J.K. (2010). CD56 negative NK cells: origin, function, and role in chronic viral disease. *Trends Immunol* 31, 401-406. 10.1016/j.it.2010.08.003.
47. Domenico Mavilio, G.L., Janet Benjamin, Diana Kim, Dean Follman, Emanuela Marcenaro, M. Angeline O'Shea, Audrey Kinter, Colin Kovacs, Alessandro Moretta, Anthony S. Fauci Characterization of CD56-/CD16+natural killer (NK) cells: A highly dysfunctional NK subset



Kidane et al.

544 expanded in HIV-infected viremic individuals. *Proceedings of the National Academy of*  
545 *Sciences* **102**, 2886-2891.

546 48. Zhou, X., Yu, W., Dunham, D.M., Schuetz, J.P., Blish, C.A., DeKruyff, R.H., and Nadeau, K.C.  
547 (2022). Cytometric analysis reveals an association between allergen-responsive natural killer  
548 cells and human peanut allergy. *J Clin Invest* **132**. 10.1172/JCI157962.

549 49. Carbone, T., Nasorri, F., Pennino, D., Eyerich, K., Foerster, S., Cifaldi, L., Traidl-Hoffman, C.,  
550 Behrendt, H., and Cavani, A. (2010). CD56<sup>high</sup>CD16-CD62L<sup>-</sup> NK cells accumulate in allergic  
551 contact dermatitis and contribute to the expression of allergic responses. *J Immunol* **184**,  
552 1102-1110. 10.4049/jimmunol.0902518.

553 50. Spitzer, Matthew H., and Nolan, Garry P. (2016). *Mass Cytometry: Single Cells, Many*  
554 *Features*.

555

556



Kidane et al.

## 6. ACKNOWLEDGMENT

We would like to thank the technical teams of Standard BioTools and Cytobank for their support during the study.

## 7. TABLES

Table I: Patient characteristics of study cohorts

Group *	Control	CRSsNP	CRSwNP	N-ERD	<i>P</i> value
No of subjects	6	6	6	6	n.a
Sex, M/F	2/4	4/2	4/2	5/1	n.a
Median age in years (range)	40 (24) <sup>+</sup>	38 (33)	49 (34)	54 (22)	0.0788
Median TPS <sup>**</sup> (range)	0 (0)	0 (0)	4 (6)	5.5 (5)	0.0002
Median SNOT-20 <sup>***</sup> (range)	1 (14) <sup>++</sup>	13 (29) <sup>+++</sup>	32 (32)	19 (35)	0.0023

\*Chronic Rhinosinusitis (CRS) without nasal polyps (CRSsNP), CRS with nasal polyps(CRSwNP), Nonsteroidal anti-inflammatory drugs (NSAIDs)-Exacerbated Respiratory Disease (N-ERD); \*\*Total Polyp Score (TPS); \*\*\* 20-item Sinonasal Out Come Test (SNOT-20); <sup>+</sup> datum from one participant was missing; <sup>++</sup> datum from one participant was missing, <sup>+++</sup> data from two participants were missing; n.a, not applicable



## 8. FIGURE LEGENDS

**Figure 1: Allergic sensitization, nasal and serum type 2 cytokine levels in patient cohorts.** (A) Heat map representing specific IgE levels to selected respiratory allergens in sera of allergic (A,  $n=12$ ) and non-allergic subjects (NA,  $n=12$ ). The color gradient from white to red represents increasing quantities of allergen-specific IgE antibodies (kUA/L). (B, C) Log values of selected type 2 cytokines (y-axis, pg/ml) in (B) nasal secretion and (C) sera of allergic (black rhombus,  $n=12$ ) and non-allergic (white rhombus  $n=12$ ) subjects showing no significant differences using Mann-Whitney U test ( $p>0.05$ ). Lines represent the median with a 95% confidence interval and the standard error of the median.

**Figure 2: Elevated levels of type 2 cytokines in nasal secretions but not serum of patients suffering from chronic rhinosinusitis (CRS) with nasal polyps (wNP) and from nonsteroidal anti-inflammatory drugs (NSAIDs)-exacerbated respiratory disease (N-ERD).** (A, B) Cytokine heat map and dendrogram of hierarchical clustering analysis of expression levels of 33 cytokines in (A) nasal secretion and (B) serum of Controls ( $n=6$ ), CRS without nasal polyps (CRSsNP,  $n=6$ ), CRSwNP ( $n=6$ ) and N-ERD ( $n=6$ ). The color gradient from blue to red represents an increasing quantity of cytokines (pg/ml). (C, D) Levels (y-axis, log of pg/ml) of interleukin (IL)-4, IL-5, IL-9, IL-13, Chemokine (C-C Motif) Ligand (CCL)17, Eotaxin, Eotaxin-3, IL-10, interferon (IFN)- $\gamma$  and IL-17A in (C) nasal secretions and (D) serum in Controls (blue circle,  $n=6$ ), CRSsNP (grey square,  $n=6$ ), CRSwNP (green triangle,  $n=6$ ) and N-ERD (red triangle,  $n=6$ ) are displayed. Lines represent the median with a 95% confidence interval and the standard error of the median; stars represent statistically significant differences using the Kruskal-Wallis test followed by Dunn's test (\*:  $p\leq 0.05$ , \*\*:  $p\leq 0.01$ ).

**Figure 3: Mass cytometry analysis of peripheral blood mononuclear cells (PBMCs) in control, chronic rhinosinusitis (CRS) without nasal polyps (CRSsNP), CRS with nasal polyps (CRSwNP) and Nonsteroidal anti-inflammatory drugs (NSAIDs)-Exacerbated Respiratory Disease (N-ERD) patients.** (A) An optimized t-distributed stochastic neighbour embedding (opt-SNE) map representing a consensus staining pattern and intensity levels of key markers employed in mass cytometry, specifically, the markers CD3, CD4, CD8, CD11c, CD19, CD56, CD161, HLA-DR, and TCR $\gamma\delta$  depicted in a concatenated file. The color gradient from blue to red represents an increasing intensity of the metals tagged to the specific antibodies. (B) Heat map and dendrogram of hierarchical clustering analysis displaying the expression levels/metal intensities of selected markers across individual immune cell types. (C) A consensus overlay of FlowSOM metaclusters on an opt-SNE map of concatenated files and (D) bar chart graph of individual patients displaying major cell populations characterized after FlowSOM analysis. Major immune cell types namely Natural Killer (NK) Cells, Natural Killer T (NKT), Mucosal-associated invariant T (MAIT) Cells, CD4+ T Cells (CD4 T), regulatory T cells (T-reg), CD8+ T Cells (CD8 T), Gamma-Delta T Cells ( $\gamma\delta$  T), Memory B Cells (Memory B), Naive B cells (Naive B), Plasmablasts (Plasmas), Monocytes, Myeloid Dendritic Cells (mDCs), Plasmacytoid Dendritic Cells (pDCs) were identified in all four patient groups: controls ( $n=6$ ), chronic rhinosinusitis with (CRSwNP,  $n=6$ ) and without (CRSsNP,  $n=4$ ) nasal polyps and non-steroidal anti-inflammatory drugs (NSAIDs)-exacerbated respiratory disease (N-ERD,  $n=6$ ). (E) Th2a subset of the CD4+ T cells, manually gated (upper left panel) using marker expression



Kidane et al.

patterns shown on a heat map (upper right panel). Percentage Th2a cells (y-axis) of total PBMCs in allergic (lower left panel,  $n=10$ ) versus non-allergic (lower left panel,  $n=12$ ) and in disease groups (lower right panel). Box plots show the range with medians as horizontal lines and whiskers indicating minimum and maximum values. Stars represent statistically significant differences between allergic and non-allergic groups using Mann-Whitney U test (\*:  $p \leq 0.05$ ) whereas the Kruskal-Wallis test followed by Dunn's test in disease groups showed no significant difference ( $p > 0.05$ ).

**Figure 4: In-detail B cell subset identification using FlowSOM.** (A) B cell FlowSOM clusters (left panel, outlined in red lines) were merged into one population and subjected to further sub-clustering using FlowSOM analysis (right panel) into ten subtypes of B cells, labelled B1 to B10. (B) A consensus heatmap of the raw values of median metal intensity (MMI) of selected markers in B1 to B10, the colour gradient from black to red represents an increasing expression/intensity of the markers in the concatenated file. (C-F) Comparison of percentage (y-axis) of respective B cell sub-clusters (B1-B10) of total B cells in (C, E) Disease conditions (controls, blue,  $n=6$ ; CRS without polyps (CRSsNP), grey,  $n=6$ ; CRS with nasal polyps (CRSwNP), green,  $n=6$ ) and Non-steroidal anti-inflammatory drug (NSAID)-exacerbated respiratory disease (N-ERD,  $n=6$ , red)) and (D, F) allergic conditions (allergic, black-white pattern,  $n=10$ ; non-allergic, white,  $n=12$ ). Box plots show the range with medians as horizontal lines and whiskers indicating minimum and maximum values. Stars represent statistically significant differences between groups using Kruskal-Wallis test (C, E) followed by Dunn's test (\*:  $p \leq 0.05$ ) and (D, F) using the Mann Whitney U test (\*:  $p \leq 0.05$ ).

**Figure 5: CD45RA, CXCR5 and CD49d expression levels in B cell subtypes.** (A-C) Median metal intensity (MMI, y-axis) in B cell sub-clusters B1-B5 (left panels) and B6 to B10 (right panels) of (A) CD45RA, (B) CXCR5 and (C) CD49d in controls (blue,  $n=6$ ), chronic rhinosinusitis without (CRSsNP, grey,  $n=6$ ) and with (CRSwNP, green,  $n=4$ ) nasal polyps and in patients with non-steroidal anti-inflammatory drugs (NSAIDs)-exacerbated respiratory disease (N-ERD, red,  $n=6$ ). Stars represent statistically significant differences between groups using Kruskal-Wallis test followed by Dunn's test (\*:  $p \leq 0.05$ ).

**Figure 6: Characterization of early-stage (ES) and late-stage (LS) Natural killer cells (NKs).** (A) A consensus optimized t-distributed stochastic neighbour embedding (opt-SNE) map showing ES and LS NK cells. (B) A consensus heatmap of the raw median metal intensity (MMI) values of selected markers characterizing NK cell subsets. The color gradient from black to red represents an increasing expression/intensity of the markers. (C, D) Percentage of NK cell subsets of total cells (y-axis) in (C) disease groups (Controls, blue,  $n=6$ ; chronic rhinosinusitis (CRS) without nasal polyps (CRSsNP), grey,  $n=6$ ; CRS with nasal polyps (CRSwNP), green,  $n=4$ ; non-steroidal anti-inflammatory drugs (NSAIDs)-exacerbated respiratory disease (N-ERD), red,  $n=6$ ) and in (D) allergic (black-white pattern,  $n=10$ ) and non-allergic (white,  $n=12$ ) patients. (E, F) Median metal intensity (MMI) of (E) CD45RA and (F) CD56 in NK cell subtypes in disease groups (as described in C). Box plots show the range with medians as horizontal lines and whiskers indicating minimum and maximum values. Stars represent statistically significant differences between groups using Kruskal-Wallis test (C, E) followed by Dunn's test (\*:  $p \leq 0.05$ ) and (D) using Mann-Whitney U test (\*:  $p \leq 0.05$ ).







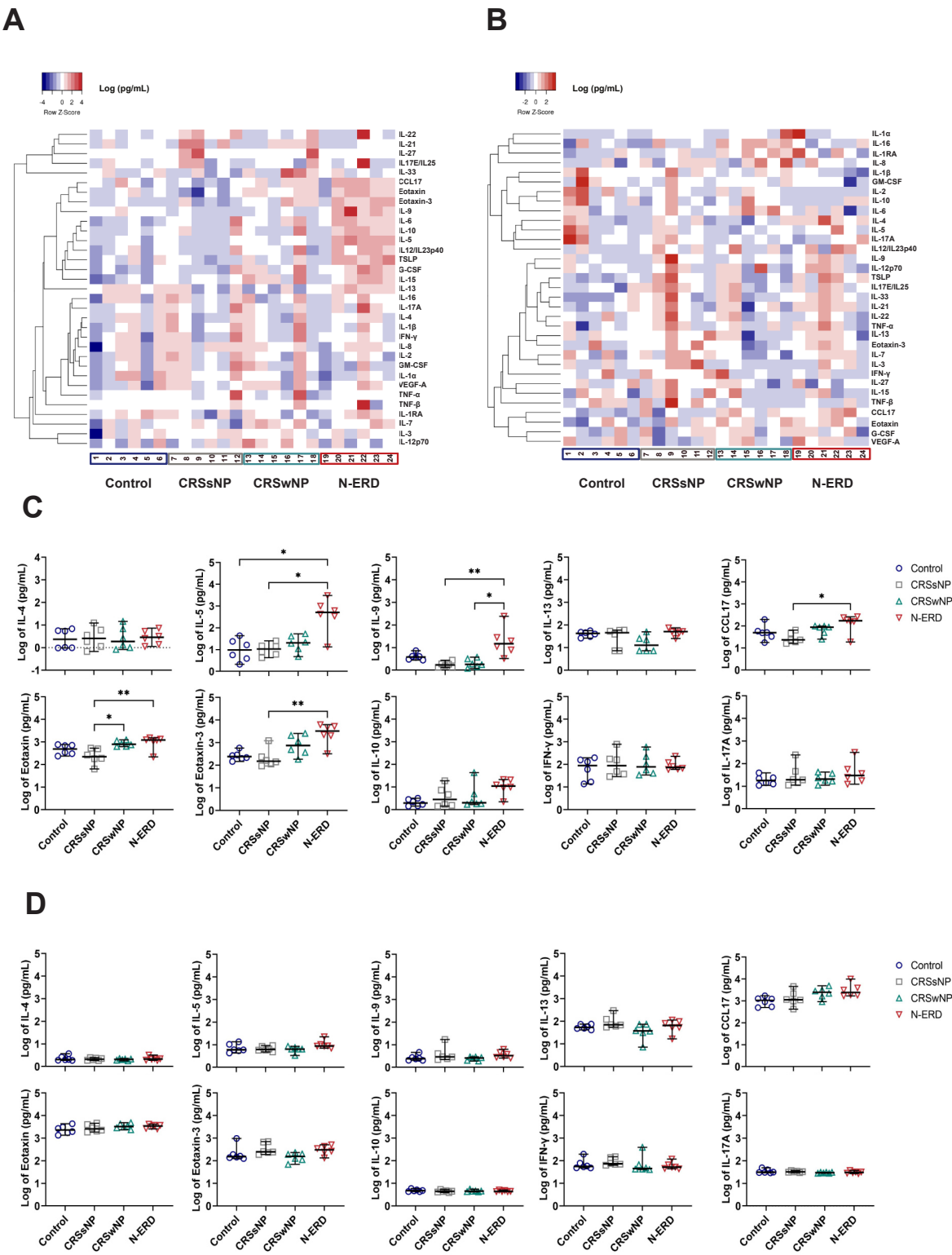
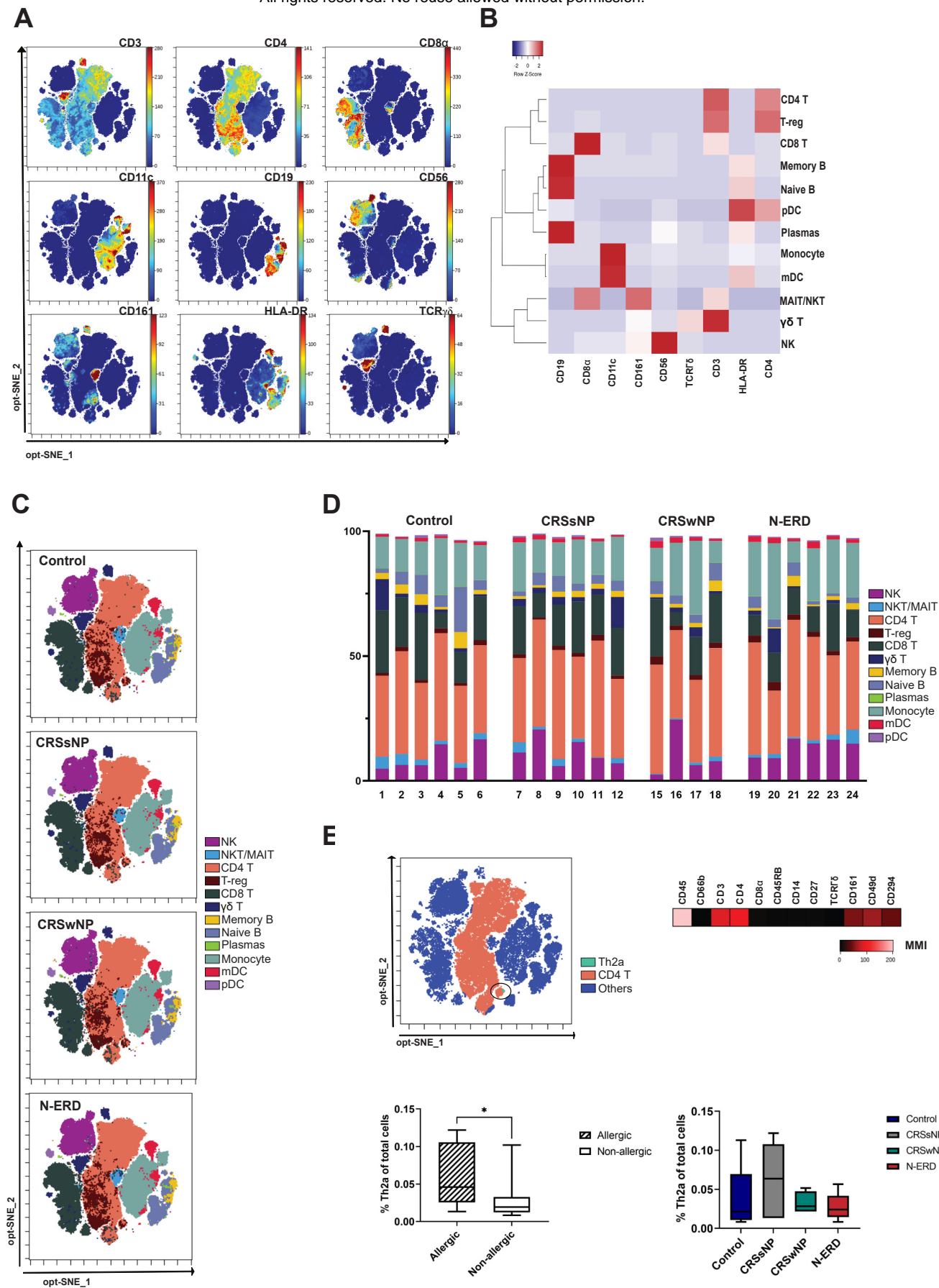


Figure 2







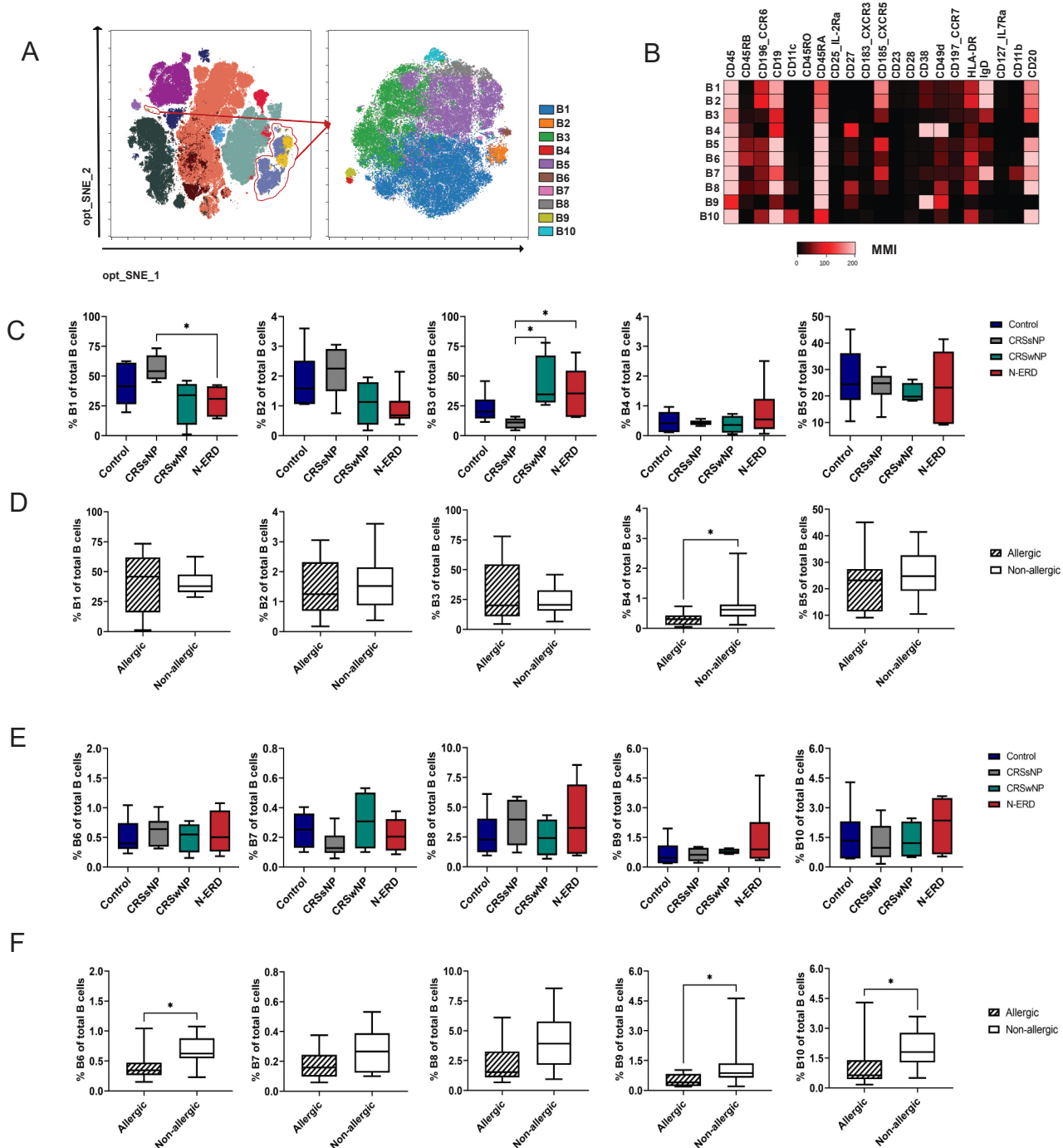
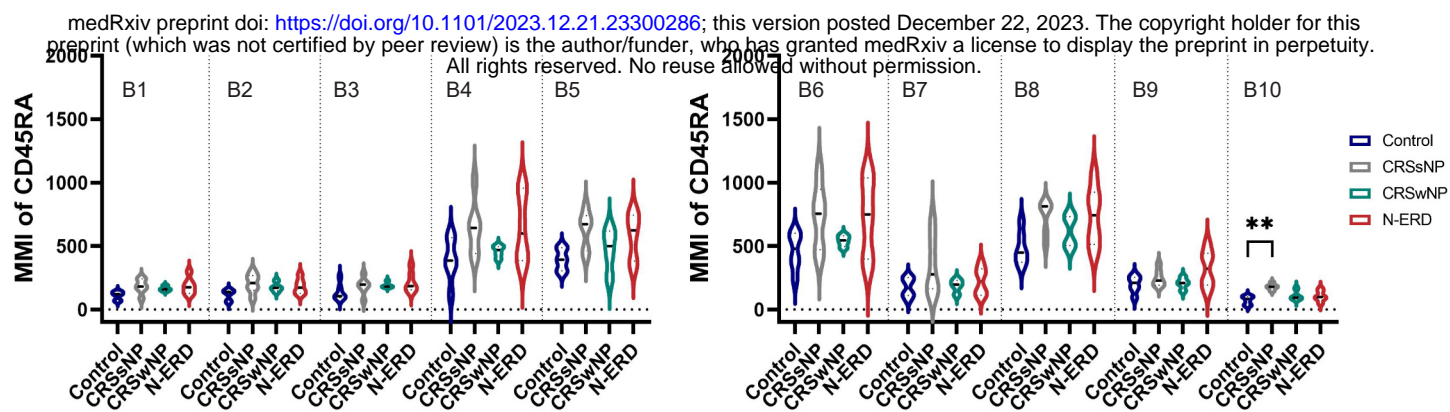


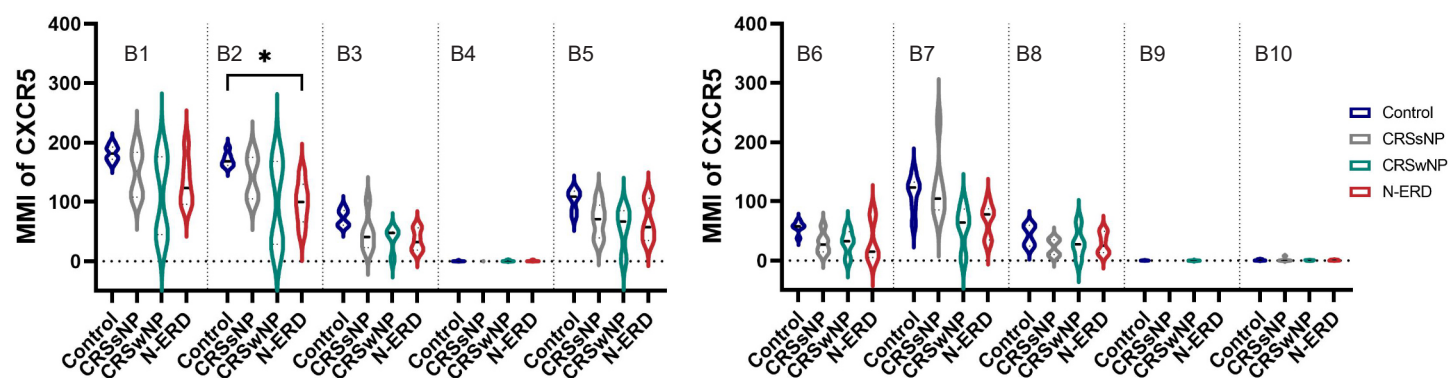
Figure 4



A



B



C

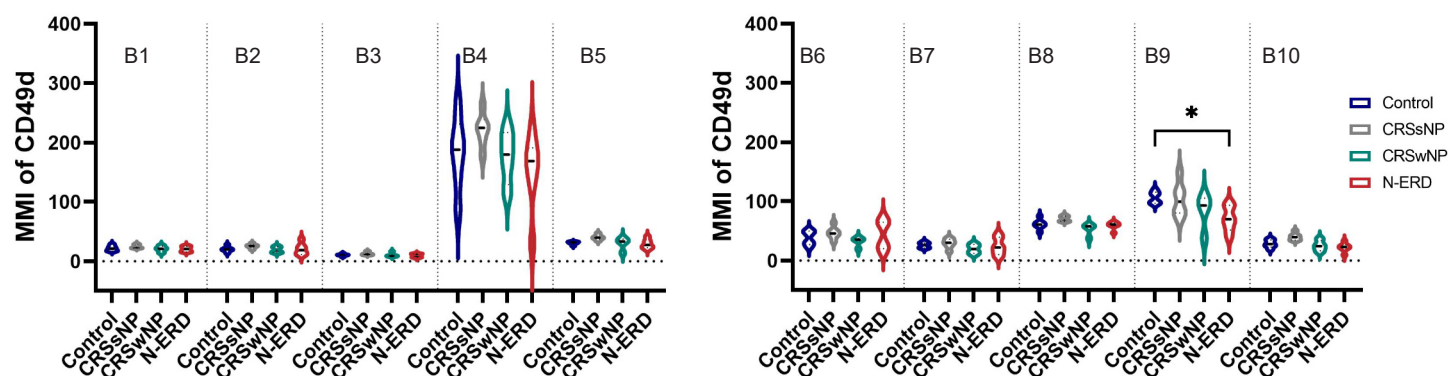


Figure 5



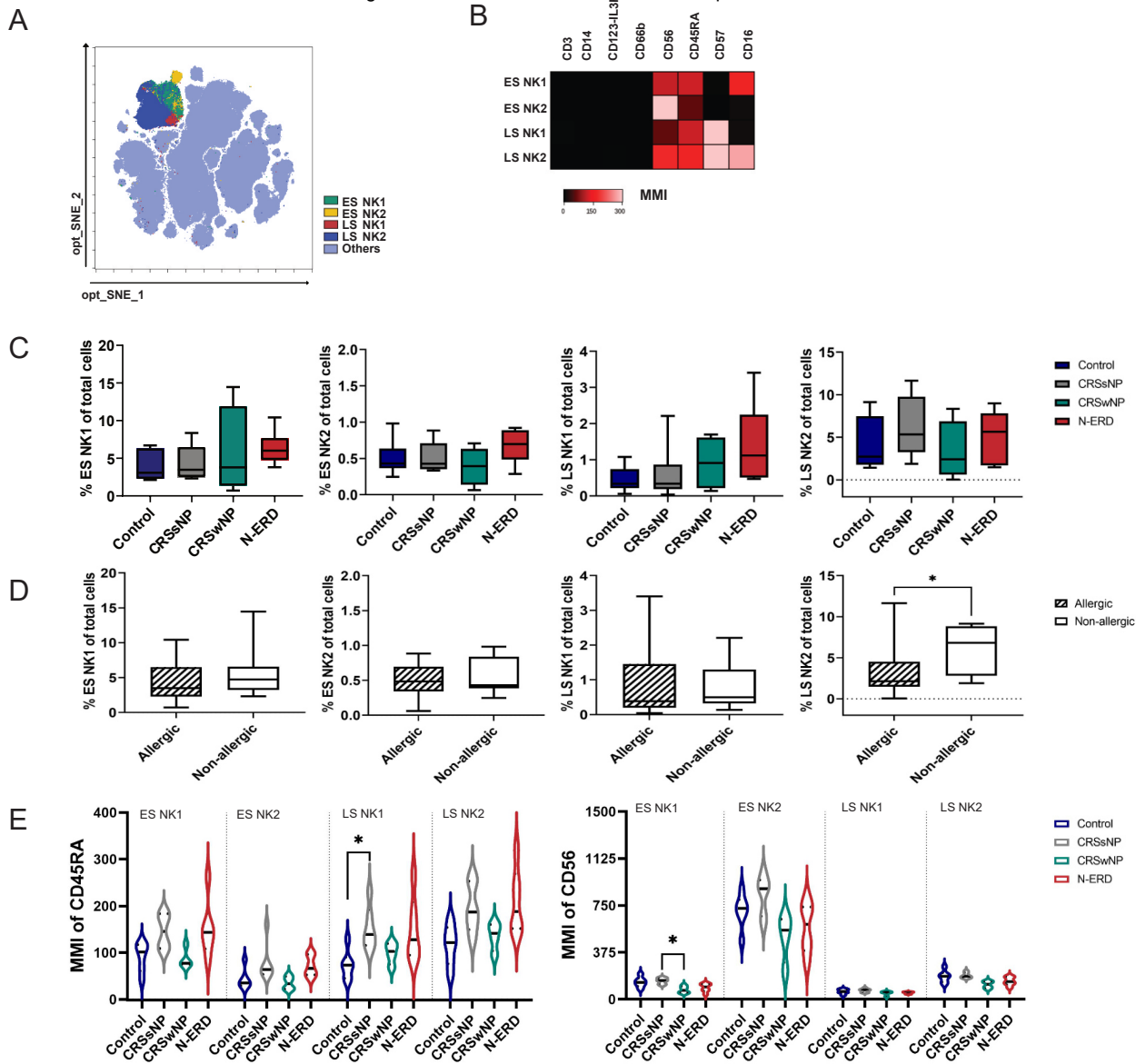


Figure 6