

1 **Immunogenicity, reactogenicity, and IgE-mediated immune responses of a mixed**
2 **whole-cell and acellular pertussis vaccine schedule in Australian infants: a**
3 **randomised, double-blind, non-inferiority trial**

4 Gladymar Pérez Chacón, Marie J Estcourt, James Totterdell, Julie A Marsh, Kirsten P Perrett,
5 Dianne E Campbell, Nicholas Wood, Michael Gold, Claire S Waddington, Michael O' Sullivan,
6 Sonia McAlister, Nigel Curtis, Mark Jones, Peter B McIntyre, Patrick G Holt, Peter C Richmond,
7 Tom Snelling*

8 Wesfarmers Centre of Vaccines and Infectious Diseases, Telethon Kids Institute, Nedlands,
9 Western Australia, Australia (G Pérez Chacón PhD, J Marsh PhD, S McAlister BSc First Class
10 Honours, Prof PC Richmond FRACP, Prof T Snelling PhD); School of Population Health, Faculty of
11 Health Science, Curtin University, Western Australia, Australia (G Pérez Chacón PhD, Prof T
12 Snelling PhD); Sydney School of Public Health, Faculty of Medicine and Health, University of
13 Sydney, Sydney, New South Wales, Australia (MJ Estcourt PhD, J Totterdell M Biostatistics, M
14 Jones M Biostatistics, Prof T Snelling PhD); Royal Children's Hospital, Murdoch Children's
15 Research Institute, Parkville, Victoria, Australia (Prof KP Perrett PhD); Department of
16 Paediatrics, The University of Melbourne, Melbourne, Victoria, Australia (Prof KP Perrett PhD,
17 Prof N Curtis PhD); Department of Allergy and Immunology, The Children's Hospital at
18 Westmead, Sydney, New South Wales, Australia (Prof DE Campbell, PhD); Discipline of Child and
19 Adolescent Health, The University of Sydney, Sydney, New South Wales, Australia (Prof DE
20 Campbell, PhD; Prof N Wood, PhD); The Children's Hospital at Westmead, Sydney, New South
21 Wales, Australia (Prof N Wood, PhD); Discipline of Paediatrics, School of Medicine, University of
22 Adelaide, Adelaide, South Australia, Australia (Prof M Gold FRACP); Department of Medicine,
23 University of Cambridge, Cambridge, UK (CS Waddington DPhil); Department of Immunology,
24 Perth Children's Hospital, Nedlands, Western Australia, Australia (M O'Sullivan, FRACP FRCPA);
25 Division of Paediatrics, School of Medicine, The University of Western Australia, Perth, Western
26 Australia, Australia (S McAlister BSc First Class Honours; M O'Sullivan FRACP, FRCPA; Prof PC
27 Richmond FRACP); Telethon Kids Institute, Nedlands, Western Australia, Australia (M O'Sullivan,
28 FRACP, FRCPA), Infectious Diseases Unit, Royal Children's Hospital Melbourne, Parkville, Victoria,
29 Australia (Prof Nigel Curtis PhD); Infectious Diseases Group, Murdoch Children's Research
30 Institute, Parkville, Victoria, Australia (Prof N Curtis PhD); Dunedin School of Medicine, University
31 of Otago, New Zealand (Prof PB McIntyre, DMedSc); Wal-yan Respiratory Research Centre,
32 Telethon Kids Institute, University of Western Australia, Nedlands, Western Australia, Australia
33 (Prof PG Holt PhD)

34 *Corresponding author: Prof Tom Snelling – Head, Health and Clinical Analytics Lab, Sydney
35 School of Public Health, Faculty of Medicine and Health, The University of Sydney, Australia.

36 Address: Rm 123, Edward Ford Building A27, The University of Sydney NSW (Australia), 2006.

37 Telephone: +61 2 9563 6886.

38 Email: tom.snelling@sydney.edu.au

39

40 **Summary**

41 **Background**

42 In most high-income countries, infant vaccination with acellular pertussis (aP) vaccines is the
43 standard of care for the prevention of pertussis disease. Based on immunological and
44 epidemiological evidence, we hypothesised that substitution of the first aP dose in the
45 vaccination schedule with whole-cell (wP) vaccine might protect against the development of IgE-
46 mediated food allergy. Here we report the results of a randomised comparison of the
47 reactogenicity, immunogenicity, and IgE-mediated immune responses of a mixed wP/aP primary
48 schedule versus the standard aP-only schedule.

49 **Methods**

50 OPTIMUM is a Bayesian, two-stage, double-blind, group sequential trial, enrolling healthy
51 Australian-born infants. At approximately 6 weeks old, participants are randomly assigned (1:1)
52 to a first dose of a pentavalent wP combination vaccine (DTwP-Hib-HepB; Pentabio, PT Bio Farma,
53 Indonesia) versus a hexavalent aP vaccine, which includes inactivated poliovirus vaccine (IPV)
54 types 1, 2, and 3 in its formulation (DTaP-Hib-HepB-IPV; Infanrix Hexa, GlaxoSmithKline,
55 Australia). All infants receive a hexavalent aP vaccine at 4 and 6 months old, as well as a
56 tetravalent aP-based formulation at 18 months old (DTaP-IPV; Infanrix-IPV, GlaxoSmithKline,
57 Australia) to ensure at least three doses of IPV as part of their childhood schedule while
58 preserving blinding. In stage one, pertussis antigen-specific IgG responses were measured before
59 and approximately one month after the 6-month aP vaccine doses. The immunogenicity of the
60 mixed schedule (wP/aP/aP) was defined as being non-inferior to that of the aP-only schedule

61 (aP/aP/aP) using a non-inferiority margin of 2/3 on the ratio of the geometric mean
62 concentrations of pertussis toxin (PT) IgG approximately one month after the 6-month aP dose.
63 Solicited adverse reactions were summarised by study arm and included all children who received
64 the first dose of either wP or aP. Parental acceptance was assessed using a 5-point Likert scale.
65 The trial is registered with ANZCTR (ACTRN12617000065392p).

66 **Results**

67 Between March 7, 2018 and January 13, 2020, 150 infants were randomised (75 per arm).
68 Demographic and baseline characteristics were balanced across the study arms. Most infants
69 were born to aP-vaccinated mothers. In the intent-to-treat analysis, PT-IgG responses of the
70 mixed schedule were non-inferior to the aP-only schedule approximately one month after a 6-
71 month aP dose [geometric mean ratio (GMR) = 0.98, 95% Bayesian credible interval (0.77 to 1.26);
72 probability (GMR > 2/3) > 0.99]. Severe solicited systemic adverse reactions were reported
73 among 14 of 74 (19%) infants after a first dose of wP and among 8 of 72 (11%) infants after a first
74 dose of aP; irritability after the first dose of pertussis-containing vaccine was the most frequent
75 severe event (11 of 74 [15%] wP recipients versus 7 of 72 [10%] aP recipients). Within 6 months
76 of enrolment, 7 serious adverse events were reported, with none deemed related to the study
77 vaccines. Parental acceptance of the mixed schedule was high (97% would agree to have this
78 schedule again).

79 **Interpretation**

80 The mixed wP/aP schedule was associated with more reactions than the aP-only schedule, but
81 these were mostly non-severe. The mixed schedule was well accepted by parents and evoked
82 non-inferior PT-IgG responses after completion of the three-dose primary series.

83 **Funding**

84 Telethon New Children's Hospital Research Fund and National Health and Medicine Research
85 Council.

86

87 ***Research in context***

88 We searched PubMed on April 17, 2023, for paediatric studies of heterologous priming with
89 whole-cell pertussis (wP) vaccine and acellular pertussis (aP) vaccine, with no language or date
90 restrictions. We used the terms [“whole-cell pertussis vaccine” AND “acellular pertussis
91 vaccine”], OR [“IgE” AND “tetanus toxoid”]. Of the 997 articles retrieved, we found no published
92 randomised comparisons between heterologous versus exclusive primary routine vaccination
93 with either wP or aP-based formulations.

94 In two observational studies, laboratory-confirmed pertussis disease was less common among
95 school-aged children and adolescents who received wP versus aP as a first dose. A heterologous
96 wP/aP primary schedule (in which the first dose was wP) was associated with lower rates of
97 pertussis disease than an aP-only primary schedule.

98 In a case-control study, pertussis was less common among children who had received mixed
99 wP/three-component (3c)-aP vaccine (including pertussis toxoid, filamentous haemagglutinin,
100 and pertactin) versus those exclusively primed with 3c-aP vaccine formulations. No evidence of
101 a difference was observed among those vaccinated with a heterologous wP/five-component (5c)-
102 aP primary schedule versus those exclusively primed with a 5c-aP vaccine formulation (including
103 the above-mentioned pertussis antigens as well as fimbriae type 2 and 3). In contrast, another
104 case-control study found that compared to the 5c-aP-only priming strategy, a primary series
105 including one or more doses of a wP vaccine formulation, with reported efficacy against
106 laboratory-confirmed pertussis between 36% (95% CI 14% to 52%) and 48% (95% 37% to 58%),
107 was associated with higher vaccine effectiveness against pertussis disease more than a decade

108 after priming. In none of the case-control analyses was the nature of the heterologous schedules
109 further described.

110 Two clinical and immunological studies reported that wP-only schedules were associated with
111 lower post-priming tetanus toxoid (TT)-IgE concentrations than homologous priming with aP-
112 containing vaccines. An additional study reported lower TT-IgE concentrations after a first dose
113 of wP versus aP.

114 **Added value of this study**

115 To our knowledge, this is the first trial to evaluate the immunogenicity, reactogenicity, and IgE-
116 mediated immune responses to a mixed primary schedule consisting of a first dose of wP given
117 at approximately 6 weeks old, followed by aP at 4, and 6 months old.

118 **Implications of all the available evidence**

119 This trial provides supporting evidence of the safety and immunogenicity of a mixed wP/aP
120 vaccine schedule in a setting with high maternal pertussis vaccine coverage. The findings warrant
121 further investigation of the comparative clinical effects of a mixed wP/aP versus the standard aP-
122 only schedule.

123

124 **Introduction**

125 Whole-cell pertussis (wP) vaccines cause adverse reactions in infants frequently, but these are
126 generally benign and self-limited.¹ Since the early 1990s, wP vaccine formulations have been
127 discontinued from use in most high- and some middle-income countries and replaced by less
128 reactogenic subunit acellular (aP) vaccines.² Data from pertussis outbreaks suggest that primary
129 schedules comprising at least one wP vaccine dose provide better long-term protection than aP-
130 only primary schedules.^{3,4}

131 We have previously reported that compared to matched population controls, Australian children
132 with IgE-mediated food allergy were less likely to have received wP rather than aP as their first
133 pertussis vaccine dose in infancy (odds ratio [OR] 0.77; 95% CI 0.62 to 0.95).⁵ Consistent with this
134 observation, previous studies have described differences in the immune effects arising from
135 vaccination with wP versus aP vaccines in infancy. Compared to exclusive vaccination with aP
136 which elicits a Th₂-polarised immunophenotype, a first dose of wP induces relative Th₁/Th₁₇
137 immune polarisation, reducing the production of aP antigen-specific type 2 cytokines and down-
138 regulating the synthesis of total IgE, and specific IgE responses against tetanus toxoid (TT),
139 diphtheria toxoid (DT), pertussis toxin (PT), and food antigens.^{6–11} We therefore hypothesise that
140 mixed priming using a first dose of wP followed by aP vaccine doses could protect against IgE-
141 mediated food allergy, while offering non-inferior protection against pertussis and an acceptable
142 reactogenicity profile. To test this, we are conducting a two-stage randomised controlled trial
143 (RCT) to assess clinical, immunological, and safety endpoints in Australian infants vaccinated with
144 a mixed (wP/aP/aP) primary vaccine schedule, compared with the standard aP-only (aP/aP/aP)
145 vaccine schedule.^{12,13} Ahead of ascertainment of the primary clinical outcome of IgE-mediated

146 food allergy by 12 months old, here we present the immunogenicity and reactogenicity outcomes
147 which were assessed in the first 150 infants enrolled in Perth, Western Australia (WA) at
148 approximately 6 and 7 months old, as well as total IgE, TT, and food-antigen specific IgE responses
149 at the same ages.

150 **Methods**

151 **Study design and participants**

152 The OPTIMUM (Optimising Immunisation Using Mixed Schedules) study is a Bayesian group-
153 sequential, two-stage, multicentre, randomised, parallel group, double-blind controlled trial with
154 an adaptive design. Stage one was designed to obtain detailed solicited reactogenicity data
155 following each pertussis vaccine dose and post-priming immune response data for the first 150
156 enrolled infants. Stage two was designed to assess the primary endpoint of IgE-mediated food
157 allergy, with less intensive follow-up, but with sufficient sample size to provide appropriate levels
158 of statistical power. The analyses that we describe here involve the first six months of follow-up
159 of the first 150 WA-born infants enrolled in stage one (Perth Children's Hospital/Telethon Kids
160 Institute, WA). The eligibility criteria, enrolment methods, and visit schedule are provided in the
161 protocol and statistical analysis plan.^{12,13} Eligible participants were healthy infants aged between
162 6 and < 12 weeks old and born after 32 weeks' gestation. The legally accepted representative(s)
163 of each participating infant provided written informed consent. The trial was approved by the
164 Child and Adolescent Health Service Ethics Committee, WA, Australia (RGS 00019).

165 **Randomisation and masking**

166 Randomisation was by computer-generated allocation sequence prepared by the trial
167 statistician, and based on randomly permuted blocks of size six, eight, or ten.^{12,13} Infants were
168 assigned in a 1:1 ratio to receive either the intervention (pentavalent wP combination vaccine:
169 (DT, TT, wP, *Haemophilus influenzae* type b [Hib], and hepatitis B [HepB] vaccine; DTwP-Hib-
170 HepB, Pentabio, PT Bio Farma, Indonesia) or the comparator (hexavalent aP combination vaccine,
171 which includes inactivated poliovirus vaccine [IPV] types 1, 2, and 3 in its formulation: DTaP-Hib-
172 HepB-IPV, Infanrix Hexa, GlaxoSmithKline, Australia) at approximately 6 weeks old. An unblinded
173 research nurse obtained the next sequential vaccine allocation and prepared it into a syringe
174 which was covered with an opaque label. Following vaccination, this nurse had no involvement
175 in subsequent study procedures. Parents of children in the stage one cohort were unblinded in
176 May 2023, after the last child completed the study.

177 **Procedures**

178 At approximately 6 weeks old (“Day 0”), an intramuscular dose (0.5 mL) of either a World Health
179 Organization (WHO)-prequalified pentavalent wP combination vaccine or a hexavalent aP
180 combination vaccine was administered into the anterolateral aspect of the right thigh. At
181 approximately 4 and 6 months old, all participants received the standard (6-in-1) aP combination
182 vaccine (as routinely recommended by the Australian immunisation schedule) at the same
183 injection site (anterolateral aspect of the right thigh). The 13-valent pneumococcal conjugate
184 vaccine (13vPCV) and monovalent rotavirus vaccine (RV1) were co-administered at
185 approximately 6 weeks and 4 months old per Australian recommendations. National guidelines
186 also recommend all children receive at least three doses of IPV as part of their childhood

187 schedule; to ensure this was achieved while preserving blinding, children assigned to both the
188 mixed and the aP-only schedule received a dose of DTaP-IPV (Infanrix-IPV, GlaxoSmithKline,
189 Australia) at 18 months old.¹⁴ A prophylactic dose of paracetamol (15 mg/Kg) was administered
190 immediately before the 6-week doses per Australian guidelines for wP vaccines.¹⁵ Two additional
191 doses 6-hour apart were recommended, but not observed by the researchers.

192 Solicited systemic and local adverse reactions following pertussis primary vaccinations were
193 ascertained once a day for 7 days and recorded by the participant's parent in a diary card. These
194 were fever (axillary temperature $\geq 38^{\circ}\text{C}$), irritability, restlessness, vomiting, diarrhoea, anorexia,
195 drowsiness, as well as erythema (redness), swelling, induration (hardness) and pain at the
196 injection-site. Serious adverse events (SAEs) were defined as any adverse event/adverse reaction
197 that resulted in death, was life-threatening, required hospitalisation or prolongation of existing
198 hospitalisation, resulted in persistent or significant disability or incapacity, or was a congenital
199 anomaly, or birth defect.¹⁶ The total number of SAEs and adverse events of special interest
200 (breakthrough pertussis infections and hypotonic hyporesponsive episodes) occurring within the
201 first 6 months of follow-up were reported. SAEs and unsolicited adverse events by treatment arm
202 will be reported at the end of the trial. To ascertain overall satisfaction of the vaccines
203 administered, parents were asked about their agreement with the statement: "I would be willing
204 to vaccinate another child with the same combination of vaccines administered;" responses were
205 recorded in diary cards on Day 6 using a 5-point Likert scale, from "strongly disagree" to "strongly
206 agree".

207 Peripheral blood samples were obtained immediately before the 6-month aP dose, and
208 approximately one month (21 to 35 days) afterwards. Serum IgG responses to diphtheria,

209 tetanus, and pertussis antigens were measured using a multiplex fluorescent bead-based
210 immunoassay.¹⁷ The threshold for seropositivity was defined as concentrations ≥ 5 IU/mL (5000
211 mIU/mL) for pertussis antigens (i.e., PT, filamentous haemagglutinin [FHA], pertactin [PRN], and
212 fimbriae type 2 and 3 [FIM2/3]).¹⁸ Long-term seroprotective concentrations for TT and DT were
213 defined at ≥ 100 mIU/mL.^{19,20} Total and specific IgE to hen's egg antigens and TT were measured
214 in plasma samples (ImmunoCAP, Thermo Fisher Scientific) using the limits of detection (LLoD)
215 and quantitation (LLoQ) specified by the manufacturer. The total IgE concentrations were
216 reported in the range of 0.1 kU/L to 100 kU/L for low-range assays or 2 to 5000 kU/L if exceeded.
217 IgE concentrations to specific antigens were reported in the range of 0.00 kU_a/L to 100.00 kU_a/L.
218 The LLoD for antigen/allergen specific IgE was ≥ 0.01 kU/L; the LLoQ for total and specific IgE was
219 ≥ 0.1 kU_(a)/L.

220 **Outcomes**

221 Vaccine immunogenicity outcomes included IgG responses to PT, FHA, PRN, tetanus, and
222 diphtheria toxoids immediately before the 6-month aP dose and approximately one month later.
223 Outcomes related to IgE-mediated immune responses included total IgE and specific IgE against
224 hen's egg antigens and TT assessed immediately before the 6-month aP dose and approximately
225 one month later. Reactogenicity and tolerability outcomes included the occurrence of specific
226 solicited local and systemic adverse reactions in the 7 days following each scheduled dose, and
227 the parent-reported acceptability of the doses administered.

228 **Statistical analysis**

229 The statistical analysis plan was written by the trial statistician and approved by study
230 investigators prior to unblinding of group allocations.¹³ Intention-to-treat (ITT) and per-protocol
231 (PP) estimands were considered for each statistical model. The ITT analysis set included all infants
232 who received at least the first dose of wP or aP, irrespective of any subsequent deviations from
233 the study protocol. The PP analysis set included only infants with outcomes measured without
234 deviation from the protocol-specified vaccination and blood collection schedules. Missing
235 outcomes were assumed to be missing-at-random.

236 Immunogenicity and outcomes related to IgE-mediated immune responses were summarised by
237 the sample GMCs as well as seropositivity rate at each time-point. Each antigen/allergen type
238 was analysed using Bayesian multivariate-normal linear regression models on the available log₁₀
239 concentrations with an unstructured covariance matrix shared across both treatment groups.
240 The geometric mean ratio (GMR) of the mixed schedule relative to the aP-only schedule at each
241 time-point was estimated. Analyses were conducted separately for the intent-to-treat (ITT) and
242 per-protocol (PP) sets. A non-inferiority margin of 2/3 on the GMR was used to assess the non-
243 inferiority of the mixed schedule versus the aP-only schedule with regards to PT-IgG
244 approximately one month after the 6-month aP dose per WHO guidelines.²¹ To estimate the
245 models, IgE-specific values reported as 0.00 kU_a/L were treated as left-censored at 0.005 kU_a/L.
246 All adjusted models included sex, birth order, breastfeeding status, delivery method, family
247 history of atopic disease, and parental income as baseline covariates.

248 To supplement the IgG and IgE models of the raw concentrations, the event of IgG seropositivity
249 for each vaccine antigen with respect to the specified threshold and IgE concentrations ≥ 0.01

250 KU/L were analysed via Bayesian logistic mixed effects models. The models were used to derive
251 standardised differences of the mixed schedule compared to the aP-only schedule for probability
252 of seropositivity and IgE ≥ 0.01 KU/L respectively. The reactogenicity data were summarised by
253 the distribution of each solicited adverse event for each vaccine occasion at the study site clinic
254 and the highest/worst reaction grade experienced. Analyses were performed in R version 4.3.1
255 with Bayesian models fit using Stan version 2.33.1 (via CmdStanR version 0.6.1). This trial is
256 registered at the Australian and New Zealand Clinical Trial Registry (ACTRN12617000065392p).

257 **Role of the funding source**

258 This trial is funded by the Telethon New Children's Hospital Research Fund (stage one) and
259 Australia's National Health and Medicine Research Council (stage two). These funding bodies had
260 no role in the study design, data collection, data analysis, data interpretation, or writing of this
261 report. The conduct of this trial is overseen by an independent Data and Safety Monitoring
262 Committee.

263

264 **Results**

265 Between March 7, 2018 and January 13, 2022, 153 infants were screened for eligibility (Figure 1),
266 of whom 150 were randomised to wP versus aP for their 6-week pertussis vaccine dose (75 in
267 each group). Baseline and demographic characteristics were well balanced across mixed and aP-
268 only schedules as described in Table 1. Except for three infants in the mixed schedule arm, infants
269 this cohort were born from an aP-vaccinated mother in the preceding pregnancy.

270

271 **Table 1. Baseline and demographic characteristics.**

	aP (n = 75)	wP (n = 75)	Overall (n = 150)
History of atopic diseases in first degree relatives - n (%)			
No	16 (21)	20 (27)	36 (24)
Yes	58 (77)	54 (72)	112 (75)
Unknown	1 (1)	1 (1)	2 (1)
Sex - n (%)			
Female	36 (48)	38 (51)	74 (49)
Male	39 (52)	37 (49)	76 (51)
Household income - n (%)			
< \$18,000	1 (1)	0 (0)	1 (1)
\$18,000 to \$37,000	0 (0)	1 (1)	1 (1)
\$37,001 to \$87,000	5 (7)	2 (3)	7 (5)
\$87,001 to \$180,000	34 (45)	42 (56)	76 (51)
> \$180,000	35 (47)	30 (40)	65 (43)
Maternal education - n (%)			
Secondary school	5 (7)	2 (3)	7 (5)
TAFE or trade certificate (including diploma)	10 (13)	12 (16)	22 (15)
Bachelor-level university degree	35 (47)	36 (48)	71 (47)
Post-graduate university qualification	25 (33)	25 (33)	50 (33)
Other parent's education - n (%)			
Secondary school	5 (7)	8 (11)	13 (9)
TAFE or trade certificate (including diploma)	24 (32)	19 (25)	43 (29)
Bachelor-level university degree	26 (35)	25 (33)	51 (34)
Post-graduate university qualification	20 (27)	23 (31)	43 (29)
Maternal country of birth - n (%)			
Australia	51 (68)	55 (73)	106 (71)
United Kingdom	6 (8)	2 (3)	8 (5)
Ireland	3 (4)	0 (0)	3 (2)
Philippines	1 (1)	2 (3)	3 (2)

Other	8 (11)	10 (13)	18 (12)
Missing	6 (8)	6 (8)	12 (8)

Other parent's country of birth - n (%)

Australia	53 (71)	50 (67)	103 (69)
United Kingdom	3 (4)	7 (9)	10 (7)
New Zealand	1 (1)	4 (5)	5 (3)
Ireland	1 (1)	3 (4)	4 (3)
Other	11 (15)	4 (5)	15 (10)
Missing	6 (8)	7 (9)	13 (9)

Delivery type - n (%)

Vaginal delivery	25 (33)	29 (39)	54 (36)
Elective caesarean section	21 (28)	17 (23)	38 (25)
Emergency caesarean section	12 (16)	18 (24)	30 (20)
Forceps/vacuum assisted delivery	17 (23)	11 (15)	28 (19)

Intrapartum antibiotics - n (%)

No	48 (64)	47 (63)	95 (63)
Yes	27 (36)	27 (36)	54 (36)
Missing	0 (0)	1 (1)	1 (1)

Neonatal antibiotics - n (%)

No	66 (88)	71 (95)	137 (91)
Yes	9 (12)	4 (5)	13 (9)

Maternal gravidity - n (%)

1	43 (57)	31 (41)	74 (49)
2	18 (24)	19 (25)	37 (25)
3	9 (12)	14 (19)	23 (15)
4	3 (4)	6 (8)	9 (6)
5+	2 (3)	5 (7)	7 (5)

Maternal parity - n (%)

1	53 (71)	46 (61)	99 (66)
2	14 (19)	22 (29)	36 (24)
3	7 (9)	4 (5)	11 (7)

4	1 (1)	3 (4)	4 (3)
Maternal dTpa in the preceding pregnancy - n (%)			
5c-dTpa	21 (28)	20 (27)	41 (27)
3c-dTpa	43 (57)	39 (52)	82 (55)
Unknown	11 (15)	13 (17)	24 (16)
None	0 (0)	3 (4)	3 (2)
Maternal dTpa last 5 years, excluding in the preceding pregnancy - n (%)			
5c-dTpa	7 (9)	6 (8)	13 (9)
3c-dTpa	6 (8)	9 (12)	15 (10)
3c-dTpa-IPV	1 (1)	0 (0)	1 (1)
Unknown	22 (29)	25 (33)	47 (31)
None	39 (52)	35 (47)	74 (49)
Maternal seasonal influenza vaccination during pregnancy - n (%)			
No	14 (19)	10 (13)	24 (16)
Yes	61 (81)	65 (87)	126 (84)
Mode of feeding - n (%)			
Exclusively breastfed	50 (67)	52 (69)	102 (68)
Exclusively formula-fed	6 (8)	4 (5)	10 (7)
Both breastfed and formula-fed	18 (24)	19 (25)	37 (25)
Both breastfed and started on solids	1 (1)	0 (0)	1 (1)
Cat ownership - n (%)			
No	59 (79)	63 (84)	122 (81)
Inside	5 (7)	3 (4)	8 (5)
Inside and outside	11 (15)	9 (12)	20 (13)
Dog ownership - n (%)			
No	35 (47)	39 (52)	74 (49)
Inside	14 (19)	10 (13)	24 (16)
Outside	4 (5)	3 (4)	7 (5)
Inside and outside	22 (29)	23 (31)	45 (30)
Child attends day care - n (%)			

No	75 (100)	75 (100)	150 (100)
Number of siblings - n (%)			
0	51 (68)	41 (55)	92 (61)
1	14 (19)	22 (29)	36 (24)
2	9 (12)	5 (7)	14 (9)
3+	1 (1)	4 (5)	5 (3)
Missing	0 (0)	3 (4)	3 (2)
Apgar score, 1 minute - n (%)			
< 8	9 (12)	9 (12)	18 (12)
8	5 (7)	5 (7)	10 (7)
9	59 (79)	61 (81)	120 (80)
10	1 (1)	0 (0)	1 (1)
Missing	1 (1)	0 (0)	1 (1)
Apgar score, 5 minute - n (%)			
< 8	0 (0)	3 (4)	3 (2)
8	2 (3)	3 (4)	5 (3)
9	67 (89)	64 (85)	131 (87)
10	5 (7)	5 (7)	10 (7)
Missing	1 (1)	0 (0)	1 (1)
Maternal ethnicity - n (%)¹			
European Caucasian	68 (45)	63 (42)	131 (44)
Indian subcontinent	7 (5)	11 (7)	18 (6)
Asian	5 (3)	9 (6)	14 (5)
South American	1 (1)	2 (1)	3 (1)
Other parent's ethnicity - n (%)²			
European Caucasian	71 (47)	72 (48)	143 (48)
Indian subcontinent	6 (4)	4 (3)	10 (3)
Asian	3 (2)	4 (3)	7 (2)
South American	0 (0)	1 (1)	1 (0)
Black African	0 (0)	1 (1)	1 (0)
Indigenous Australia	1 (1)	0 (0)	1 (0)

Infant's ethnicity - n (%)¹

European Caucasian	72 (48)	73 (49)	145 (48)
Indian subcontinent	10 (7)	12 (8)	22 (7)
Asian	6 (4)	11 (7)	17 (6)
South American	1 (1)	2 (1)	3 (1)
Black African	0 (0)	1 (1)	1 (0)
Indigenous Australia	1 (1)	0 (0)	1 (0)

Birth measurements - Median (Q1–Q3)

Gestational age at delivery (weeks)	39 (38–39)	38 (38–39)	38 (38–39)
Weight (g)	3345 (3023–3601)	3454 (3182–3765)	3410 (3110–3664)
Weight missing - n (%)	1 (1)	0 (0)	1 (1)
Length (cm)	50 (49–51)	51 (49–52)	50 (49–51)
Length missing - n (%)	1 (1)	0 (0)	1 (1)
Head circumference (cm)	35 (34–36)	35 (34–36)	35 (34–36)
Head circumference missing - n (%)	1 (1)	0 (0)	1 (1)

Baseline measurements - Median (Q1–Q3)

Age (days)	48 (45–50)	47 (44–50)	48 (45–50)
Weight (g)	4830 (4308–5315)	5025 (4515–5385)	4888 (4361–5328)
Weight missing - n (%)	0 (0)	0 (0)	0 (0)
Length (cm)	56 (55–58)	56 (55–58)	56 (55–58)
Length missing - n (%)	0 (0)	0 (0)	0 (0)
Head circumference (cm)	38 (38–39)	38 (38–40)	38 (38–39)
Head circumference missing - n (%)	1 (1)	2 (3)	3 (2)

¹ Multiple ethnicities may apply, so percentages may not sum to 100.

5c-dTpa: 5-component diphtheria-tetanus-acellular pertussis combination vaccine (reduced antigen formulation; includes pertussis toxoid, filamentous haemagglutinin, pertactin, and fimbriae types 2 and 3); 3c-dTpa: 3-component diphtheria-tetanus-acellular pertussis combination vaccine (reduced antigen formulation; includes pertussis toxoid, filamentous haemagglutinin, and pertactin); IPV: inactivated poliovirus vaccine.

272 All available IgG responses are summarised in Figure 2 and in the [supplementary document](#); per
 273 protocol analyses are included in the [supplementary document](#).

274 At 6 months old, 72 of 75 infants (96%) in the aP-only schedule group and 68 of 75 infants (91%)
275 in the mixed schedule group had immunogenicity outcome data available (Figure 1). At 7 months
276 old, 69 of 75 infants (92%) in the aP-only schedule group and 67 of 75 infants (89%) in the mixed
277 schedule group had immunogenicity outcome data available (Figure 1).

278 At 7 months old, 68 of 69 infants in the aP-only group (99%) and 66 of 67 infants in the mixed
279 schedule group (99%) had PT-, FHA-, PRN-, TT-, and DT-IgG concentrations above the specified
280 seropositivity/seroprotective thresholds (see [supplementary document](#)). In the mixed schedule
281 group, infants had PT-IgG GMC of 4.9 IU/mL at approximately 6 months old which increased to
282 26.4 IU/mL at approximately 7 months old. In the aP-only schedule group, infants had PT-IgG
283 GMC of 13.7 IU/mL at approximately 6 months old which increased to 27.7 IU/mL at
284 approximately 7 months old. The posterior median GMR for PT-IgG (mixed schedule/aP-only
285 schedule) at 7 months old was 0.98 (95% Bayesian credible interval [CrI] 0.77 to 1.26; probability
286 $(GMR > 2/3) > 0.99$). A decrease in IgG GMCs for FIM 2/3 and an increase in IgG GMCs for FHA,
287 PRN, DT, and TT were observed at 7 months compared to 6 months old for both study groups
288 (see [supplementary document](#)). The remaining IgG GMR posterior summaries are included in
289 Table 2.

290

291

292 **Table 2. IgG GMR posterior summaries (mixed schedule group/aP-only group) and non-**
 293 **inferiority probability, diphtheria, tetanus, and pertussis antigens**

	<i>Mean ± std</i>	<i>Median</i>	<i>95% CrI</i>	<i>Pr (> 1)</i>	<i>Pr (> 2/3)</i>
Diphtheria toxoid					
6-month	1.11 ± 0.14	1.10	(0.85, 1.42)	0.77	> 0.99
7-month	1.36 ± 0.16	1.35	(1.07, 1.70)	0.99	> 0.99
7/6-month (GMFR)	1.24 ± 0.14	1.23	(0.97, 1.55)	0.96	—
Filamentous haemagglutinin					
6-month	0.36 ± 0.05	0.36	(0.28, 0.46)	0.00	0.00
7-month	0.70 ± 0.08	0.69	(0.56, 0.87)	0.00	0.67
7/6-month (GMFR)	1.97 ± 0.24	1.96	(1.55, 2.47)	> 0.99	—
Fimbriae 2/3					
6-month	1.96 ± 0.59	1.88	(1.04, 3.34)	0.98	> 0.99
7-month	1.85 ± 0.53	1.78	(1.01, 3.09)	0.98	> 0.99
7/6-month (GMFR)	0.95 ± 0.07	0.95	(0.82, 1.09)	0.23	—
Pertactin					
6-month	1.03 ± 0.17	1.01	(0.74, 1.40)	0.53	> 0.99
7-month	0.80 ± 0.12	0.79	(0.59, 1.07)	0.06	0.88
7/6-month (GMFR)	0.79 ± 0.13	0.78	(0.57, 1.06)	0.06	—
Pertussis toxin					
6-month	0.37 ± 0.04	0.37	(0.30, 0.46)	0.00	0.00
7-month	0.99 ± 0.13	0.98	(0.77, 1.26)	0.43	> 0.99
7/6-month (GMFR)	2.64 ± 0.27	2.63	(2.15, 3.21)	> 0.99	—
Tetanus toxoid					
6-month	1.16 ± 0.14	1.15	(0.92, 1.45)	0.89	> 0.99
7-month	1.16 ± 0.12	1.15	(0.93, 1.42)	0.91	> 0.99
7/6-month (GMFR)	1.01 ± 0.10	1.00	(0.83, 1.21)	0.50	—

294 *GMR, geometric mean ratio; std, standard deviation; CrI: credible interval; Pr, probability; GMFR, geometric mean fold rise*

295 Total IgE and IgE responses to hen's egg and TT antigens are summarised in Table 3, Figure3, and
296 in the [supplementary document](#).

297

298 **Table 3. Sample IgE concentration summaries (kU_[a]/L) by allergen type and assigned**
 299 **vaccination schedule.**

	<i>aP</i>						<i>wP</i>					
	n	GMC	Q1-Q3	Min-Max	≥0.01	≥0.1	n	GMC	Q1-Q3	Min-Max	≥0.01	≥0.1
Total IgE												
6-month	67	4.76	2.34–10.11	0.40–121.43	100%	100%	61	6.11	2.40–12.43	0.19–141.38	100%	100%
7-month	66	6.36	2.69–11.72	0.52–241.99	100%	100%	57	7.71	2.66–16.30	0.52–148.70	100%	100%
Tetanus toxoid IgE												
6-month	67	0.00	0.00–0.00	0.00–0.22	12%	1%	61	0.00	0.00–0.00	0.00–1.71	21%	7%
7-month	66	0.00	0.00–0.00	0.00–0.20	21%	3%	57	0.00	0.00–0.00	0.00–0.82	21%	7%
Egg white IgE												
6-month	67	0.00	0.00–0.02	0.00–14.91	36%	18%	61	0.00	0.00–0.02	0.00–3.00	26%	20%
7-month	67	0.00	0.00–0.04	0.00–39.50	54%	24%	57	0.00	0.00–0.03	0.00–4.51	42%	19%
Whole egg IgE												
6-month	67	0.00	0.00–0.02	0.00–14.85	40%	18%	60	0.00	0.00–0.04	0.00–3.51	42%	22%
7-month	67	0.00	0.00–0.04	0.00–33.70	52%	22%	57	0.00	0.00–0.04	0.00–5.16	40%	21%

300 *GMC, geometric mean concentrations. Q1-Q3: first and third quartile. Min-Max, range: minimum and maximum. Values of 0.00 set to 0.005 for*
 301 *calculation of sample GMC.*

302 At approximately 7 months old, total IgE levels ≥ 0.1 kU/L were observed in all infants assigned
303 to the mixed schedule (GMC = 7.71 kU/L) and to the aP-only schedule (GMC = 6.36 kU/L; Table
304 3). The posterior median GMR for total IgE (mixed schedule /aP-only schedule) was 1.14 (95% CrI
305 0.75 to 1.72; probability (GMR < 1) 0.27). The estimated posterior risk and risk difference
306 between the mixed schedule group and the aP-only group for TT, egg white, and whole egg IgE
307 are presented in Table 4 and in the [supplementary document](#).

308

309 **Table 4. Posterior risk and risk difference for tetanus toxoid and hen’s egg IgE quantitation by**
 310 **age and pertussis schedule.**

	<i>Marginal Pr (IgE ≥ 0.01), Median (95% CrI)</i>			<i>Odds ratios</i>		
	<i>aP</i>	<i>wP</i>	<i>wP-aP</i>	<i>Pr (wP-aP <0)</i>	<i>Conditional</i>	<i>Marginal</i>
Tetanus toxoid IgE						
Unadjusted						
6-month	0.15 (0.07,0.27)	0.21 (0.11, 0.34)	0.05 (-0.05,0.17)	0.17	2.69 (0.35,28.27)	1.40 (0.71, 3.39)
7-month	0.22 (0.12, 0.35)	0.21 (0.11, 0.34)	-0.01 (-0.14, 0.13)	0.53	0.91 (0.07, 9.44)	0.97 (0.43, 2.14)
Adjusted						
6-month	0.16 (0.08, 0.27)	0.21 (0.11, 0.33)	0.04 (-0.05, 0.15)	0.20	2.61 (0.27, 35.40)	1.33 (0.67, 3.11)
7-month	0.22 (0.12, 0.34)	0.22 (0.12, 0.34)	0.00 (-0.12, 0.12)	0.52	0.95 (0.06, 13.91)	0.98 (0.43, 2.26)
Egg white IgE						
Unadjusted						
6-month	0.36 (0.24, 0.49)	0.27 (0.16, 0.40)	-0.09 (-0.23, 0.05)	0.90	0.37 (0.06, 1.69)	0.66 (0.33, 1.23)
7-month	0.51 (0.38, 0.65)	0.44 (0.30, 0.59)	-0.07 (-0.23, 0.09)	0.80	0.50 (0.09, 2.60)	0.76 (0.38, 1.44)
Adjusted						
6-month	0.35 (0.24, 0.48)	0.28 (0.17, 0.41)	-0.07 (-0.20, 0.05)	0.86	0.36 (0.04, 2.35)	0.72 (0.35, 1.31)
7-month	0.49 (0.37, 0.62)	0.46 (0.33, 0.59)	-0.03 (-0.19, 0.11)	0.68	0.63 (0.07, 5.67)	0.86 (0.43, 1.67)
Whole egg IgE						
Unadjusted						
6-month	0.41 (0.29, 0.55)	0.40 (0.27, 0.54)	-0.01 (-0.15, 0.13)	0.57	0.85 (0.14, 4.90)	0.95 (0.52, 1.71)
7-month	0.51 (0.37, 0.64)	0.42 (0.28, 0.56)	-0.09 (-0.24, 0.07)	0.87	0.35 (0.05, 2.26)	0.71 (0.36, 1.32)
Adjusted						
6-month	0.41 (0.30, 0.54)	0.41 (0.28, 0.53)	-0.01 (-0.13, 0.12)	0.55	0.88 (0.11, 6.97)	0.96 (0.55, 1.72)
7-month	0.49 (0.37, 0.62)	0.41 (0.28, 0.53)	-0.06 (-0.21, 0.08)	0.81	0.36 (0.03, 3.55)	0.75 (0.38, 1.43)

311 *Pr, probability, CrI, credible interval; aP, acellular pertussis vaccine; wP, whole-cell pertussis vaccine. All adjusted models included sex, birth order,*
 312 *breastfeeding status, delivery method, family history of atopic disease, and parental income as baseline covariates.*

313

314 The distribution of daily grades for solicited local and systemic adverse reactions following each
315 vaccine occasion are presented in Figures 4, 5, and 6 and in the [supplementary document](#). After
316 the 6-week doses, 74 of 75 (99%) diary cards were returned in the mixed schedule group and 72
317 of 75 (96%) in the aP-only schedule group. Paracetamol use after the 6-week vaccine doses on
318 more than one occasion was recorded among 59 of 75 (79%) wP and 52 of 75 (69%) aP recipients.
319 A first dose of wP was more frequently followed by mild-to-moderate solicited local and systemic
320 adverse reactions than aP (see [supplementary document](#)).

321 Self-limited grade 3 (severe) erythema and swelling were reported at the pertussis vaccine (1 of
322 74; 1%) and 13vPCV (1 of 74; 1%) injection-sites after a 6-week wP dose; none were reported
323 after the 6-week aP dose (Figure 5 and [supplementary document](#)). No reports of severe
324 erythema, swelling, or induration at the pertussis vaccine or 13vPCV injection-sites were
325 recorded in either study group after the 4-month or 6-month vaccine doses. Severe pain was
326 recorded at the pertussis vaccine injection-site after a 6-week wP dose (6 of 74; 8%), but not after
327 a 6-week aP dose (0 of 72).

328 Fever $\geq 38.0^{\circ}$ C was reported in 0 of 73 infants vaccinated with wP and 1 of 70 (1%) infants
329 vaccinated with aP at 6 weeks old, in 3 of 70 infants (4%) in the mixed schedule group and in 4 of
330 72 (6%) infants in the aP-only schedule group at 4 months old, and in 1 of 68 infants (1%) in each
331 study group at 6 months old.

332 The proportion of infants who experienced one or more severe (grade 3) solicited systemic
333 adverse reactions was higher among those who received wP (14/74; 19%) than aP (8/72; 11%) at
334 6 weeks old, but similar after the 4-month (mixed schedule 9 of 71; 13% versus aP-only schedule

335 12 of 73; 16%) and 6-month aP doses (mixed schedule 5 of 69; 7% versus aP-only schedule 5 of
336 68; 7%). Severe irritability was reported in 11 of 74 (15%) wP versus 7 of 72 (10%) aP recipients
337 at 6 weeks old, in 8 of 71 (11%) in the mixed schedule group and 8 of 73 (11%) in the aP-only
338 schedule group at 4 months old, and in 5 of 69 (7%) in the mixed schedule group versus 4 of 68
339 (6%) in the aP-only schedule group at 6 months old.

340 On Day 6 post-vaccination at 6 weeks' old, 71 of 73 (97%) parents of wP recipients and 69 of 72
341 (96%) parents of aP recipients either agreed or strongly agreed that they would be happy for
342 their child to receive the same vaccine combination.

343 There were 7 SAEs among 5 participants within the first 6 months of follow-up; on blinded
344 assessment, none were assessed to be related to the study vaccines. No hypotonic
345 hyporesponsive episodes or breakthrough pertussis infections occurred in either group.

346

347 **Discussion**

348 We report the results of a randomised comparison of the immunogenicity, reactogenicity, and
349 IgE-mediated immune responses to a mixed wP/aP primary vaccine schedule versus the standard
350 aP-only schedule. Mixed priming (wP/aP/aP) using the WHO prequalified 5-in-1 wP vaccine
351 (Pentabio, PT Biofarma, Indonesia) and 3c-aP vaccine (Infanrix Hexa, GlaxoSmithKline, Australia)
352 formulation was non-inferior to the homologous aP-only schedule (aP/aP/aP) with respect to
353 anti-PT antibody titres at 6 and 7 months old. While almost all (99%) serum responses to DT, TT,
354 FHA, and PRN in the two treatment groups met their specified seropositivity/seroprotective
355 thresholds at 7 months old, PT and FHA IgG concentrations immediately before the 6-month aP
356 dose were lower in the mixed schedule group compared to the aP-only group. Given the lower
357 content of PT and FHA in wP versus aP-based vaccines, this finding was not unexpected; by one
358 month after the 6-month aP dose, PT concentrations were similar, but concentrations of FHA
359 remained lower in the mixed schedule compared to the aP-only schedule group.

360 Previous studies have found concentrations of antibodies to aP vaccine antigens were either
361 similar or lower in infants primed with wP than in those primed with aP.²² In addition, it has been
362 speculated that maternal vaccination might cause greater interference of the immunogenicity of
363 wP than aP vaccines in early infancy.²² In our trial, almost all mothers had received aP in
364 pregnancy, so their infants are likely to have had high levels of maternally-derived antibodies
365 targeting aP vaccine antigens at the time of receipt of the 6-week vaccine doses.

366 A dose of wP at approximately 6 weeks old was more reactogenic than a dose of aP, with a higher
367 frequency of solicited local and systemic adverse reactions which were mostly mild-to-moderate
368 in severity. While after the 6-week doses severe local adverse reactions were seldom reported

369 and only described at the wP and 13vPCV injection sites, fever $\geq 38.0^{\circ}\text{C}$ was only described in the
370 aP-vaccine study group. The proportion of parents of wP-vaccinated infants who reported
371 acceptability of the vaccination was very high and similar to that of parents of aP-vaccinated
372 infants. The young age of administration of first dose of the vaccines and the routine use of
373 prophylactic paracetamol may have attenuated the intensity of solicited reactions and possibly
374 enhanced parental acceptance of wP.²³ The reactogenicity data were presented quarterly to an
375 independent data safety and monitoring committee which supported continued enrolment.

376 A previous RCT suggested that therapeutic paracetamol administered within 48 hours post DTwP
377 vaccination does not interfere with IgG immune responses elicited by the vaccine antigens in
378 children receiving a homologous 2, 4, 6, and 18-month schedule.²⁴ More recently, a clinical trial
379 reported that prophylaxis with oral paracetamol had no effect on immunogenicity of a
380 combination aP vaccine, co-administered with 7v-PCV and a recombinant multicomponent
381 meningococcal B vaccine at 2, 3, and 4 months old.²⁵ By contrast, in infants receiving a
382 combination aP vaccine co-administered with the 10-valent pneumococcal non-typeable
383 *Haemophilus influenzae* protein D-conjugate vaccine (PhiD-CV) at 3, 4, and 5-months old,
384 prophylactic rectal paracetamol was associated with reduced IgG responses to aP antigens and
385 pneumococcal vaccine polysaccharides.²⁶ While the clinical significance of these findings is
386 uncertain, a follow-up study suggested that paracetamol prophylaxis had no impact on the
387 induction of PhiD-CV serotype-specific immunological memory or pneumococcal nasopharyngeal
388 carriage as measured at 4 years old.²⁷

389 Owing to evidence of improved long term pertussis protection among wP vaccine recipients, the
390 WHO recommends that countries using wP should only changeover to less reactogenic aP-only

391 schedules where it is financially and programmatically feasible to provide frequent aP boosters,
392 including in pregnancy.²⁸ For countries which have already transitioned to an aP-only schedules,
393 mixed schedules may provide better long-lived protection against pertussis but confirmation of
394 this would require the follow-up of many thousands of infants over many years.

395 Examining the immune responses driven by wP vaccine formulations is complex. The exact
396 concentrations of pertussis antigens within wP varies across formulations. Previous clinical trials
397 reported differences in immune responses between wP and aP-based vaccines administered in
398 homologous priming schedules and across various specific formulations of the two vaccine types.
399 Antibody responses to aP-specific antigens are generally higher among aP-vaccinated infants
400 than wP-vaccinated infants.^{29–31} However, greater vaccine effectiveness has been documented
401 among school-aged children and adolescents who had received wP versus aP as their first dose.⁴
402 Pertussis-specific T-cell memory responses may be important in long-term protection after wP
403 combination vaccine and will be evaluated in these infants.

404 Observational studies suggest that laboratory-confirmed pertussis may be less likely among wP-
405 primed versus aP-primed children, and among those receiving mixed schedules in which the first
406 dose was wP versus aP.^{3,32} A case-control study found that pertussis disease was less common
407 among children receiving a mixed schedule of wP/3c-aP versus 3c-aP only. No evidence was
408 found of a difference in the risk of pertussis among those vaccinated with a mixed wP/5c-aP
409 schedule versus those vaccinated with a with a 5c-aP formulation, although long-term
410 differences cannot be excluded.³³ Another case-control study found that compared to a 5c-aP-
411 only primary series, vaccination with one or more primary doses of a low-efficacy wP vaccine
412 formulation was associated with a lower risk of pertussis disease more than a decade after

413 priming.³² None of the cited case-control analyses provided further details regarding the nature
414 of the first pertussis vaccine dose in the mixed schedules examined.

415 WHO-prequalified 5-in-1 wP vaccine formulations have been successfully introduced across 77
416 lower-income countries supported by Gavi. While earlier concerns about safety led to the
417 discontinuation of wP in Australia and other high-income countries, a 2021 meta-analysis of 15
418 RCTs (38,072 infants) found that any risk difference for SAEs in infants primed with wP versus aP
419 is likely to be small, ranging from three fewer to two more events per 1,000 children.³⁴ Similar to
420 our trial, the meta-analysis defined SAEs as event that resulted in death, were life-threatening,
421 required hospitalisation or prolongation of existing hospitalisation, or resulted in persistent or
422 significant disability or incapacity.³⁴ Our data are therefore consistent with the excellent safety
423 record of wP previously highlighted by the WHO, and support the ongoing use of wP.

424 We have previously observed that Australian children with IgE-mediated food allergy were less
425 likely than contemporaneous controls to have received one or more doses of wP in infancy.⁵ We
426 hypothesised that compared to a standard aP-only schedule, a mixed vaccine schedule
427 comprising an initial dose of wP could help promote the normal transition from a Th₂-skewed to
428 a balanced Th₁/Th₁₇/Th₂ immunophenotype in early infancy, and thereby protect against IgE-
429 mediated food allergy. Having previously noted that wP-primed infants were less likely than aP-
430 primed infants to develop boosted vaccine-associated IgE responses,⁹ we sought to confirm this
431 observation by testing for total, TT, and egg-specific IgE at 6 and 7 months. While the production
432 of specific IgE against DTaP antigens is known to only occur in a subset of vaccinated infants,
433 children, or adults, the low TT-IgE concentrations observed in our study are not easily explained.
434 The detection of total and specific IgE were conducted using an autoanalyser IgE-based assay and

435 therefore interference by anti-allergen specific IgG is unlikely.³⁵ However, except for analyses
436 carried out in Australia,⁹ Belgium,⁷ and the US,³⁶ most paediatric TT-specific IgE response data
437 reported in the literature have been measured using RAST or other serological methods.^{8,37} Thus,
438 apart from the first group of cited studies, it is not possible to directly compare our IgE results
439 with prior cohorts.

440 This study represents the first prospective randomised comparison of a novel mixed wP/aP
441 versus aP-only schedule. We used a prequalified 5-in-1 combination vaccine formulation already
442 widely adopted and available in Gavi supported countries, and the immunogenicity of each
443 schedule was assessed using a validated multiplex fluorescent bead-based immunoassay.

444 The limitations of this study include uncertain generalisability since the study population
445 comprised a high proportion of infants of privately insured urban parents. Secondly, while our
446 previous case-control study suggests that the potential allergy protective benefits of wP might
447 be confined to IgE-mediated peanut or tree nuts allergy,⁵ stage one did not examine IgE
448 responses to these antigens. In addition, we were not powered to compare schedules for
449 important clinical outcomes, including pertussis disease. The mixed schedule was well accepted
450 by the cohort of parents who consented to participate after being informed of the known
451 reactogenicity profile of wP; it is unclear whether the high acceptance of wP observed is
452 generalisable to all parents.

453 In conclusion, our findings give support to the acceptable immunogenicity and reactogenicity of
454 the mixed primary schedule. These findings are relevant to countries where both wP and aP
455 vaccines are used and support the further evaluation of the clinical effects of mixed schedules.
456 We failed to find confirming immunological evidence of an attenuating effect of the mixed versus

457 the aP-only schedule on TT or egg-related IgE antibodies; owing to the unclear relationship
458 between these biomarkers and the subsequent development of IgE-mediated food allergy, a
459 clinically important effect cannot be excluded. In stage two, the effect of the mixed versus
460 standard schedule on the development of IgE-mediated food allergy by 12 months will be
461 assessed in up to 2000 infants using an adaptive design with prespecified stopping rules for
462 success or futility.

463

464 *Contributors*

465 Conceptualisation: JAM, KPP, DEC, CSW, NC, PBM, PGH, PCR, and TS. Data curation: GPC and JT.
466 Formal analysis: JT and SM. Funding acquisition: JAM, KPP, DEC, NW, MG, CSW, NC, PCR, and TS.
467 Investigation: GPC, MJE, MOS, and SM. Methodology: MJE, JT, JAM, KPP, DEC, CSW, SM, NC, PCR,
468 and TS. Project administration: MJE. Software: JT. Supervision: MJE, MOS, PCR, and TS.
469 Validation: JT, SM, and MJ. Access and verification of the underlying (unblinded) data reported
470 in the manuscript: JT and MJ. Visualisation: JT. Writing – original draft: GPC. Writing – review and
471 editing: GP, MJE, JT, JAM, KPP, DEC, NW, MG, CSW, MOS, MJ, PGH, PCR, and TS. All authors
472 provided their input and approved the final version of this manuscript.

473 ***Declaration of interests***

474 Unrelated to the work presented in this paper, DEC declared part time employment in DBV
475 Technologies, as well as DBV Technologies stock and stock options. DEC has also served on the
476 scientific advisory board for AllerGenis.

477 Unrelated to the work presented in this paper, MO is the non-remunerated Director of ASCIA, a
478 not-for-profit company and the peak professional body for allergy/immunology specialists in
479 Australia and New Zealand.

480 Unrelated to the work presented in this paper, PCR has served on pertussis vaccine scientific
481 advisory boards for GlaxoSmithKline and Sanofi on behalf of his institution. He participated in
482 multicentre vaccine trials of pertussis vaccines sponsored by industry, also unrelated to the work
483 presented in this paper. He has received no personal remuneration for these activities.

484 All other authors report no potential conflicts.

485 *Data sharing*

486 Data from the study will be available at the completion of follow-up, analysis and reporting of
487 OPTIMUM stage two; no end date. Deidentified, individual participant data and a data dictionary
488 defining each field in the set, will be made available to researchers who provide a
489 methodologically sound proposal to the corresponding author (TS), subject to a signed data
490 access agreement and any necessary ethics approvals ([see ANZCTR trial registration](#)). The study
491 protocol and statistical analysis plan are published, other study related documentation is
492 available on request.

493 *Acknowledgement*

494 This trial is funded by the Telethon New Children’s Hospital Research Fund (stage one) and
495 Australia’s National Health and Medicine Research Council (stage two). GPC was supported by a
496 Stan Perron Post-PhD Career Launching Award, the Australian Department of Education and
497 Training Endeavour Scholarship, as well as top-up scholarships from the Wesfarmers Centre of
498 Vaccine and Infectious Diseases at the Telethon Kids Institute and the Forrest Research
499 Foundation. KPP is supported by an NHMRC Investigator Grant and a Melbourne Children’s
500 Clinician-Scientist Fellowship. SM was supported by the Australian Government Research
501 Training Program Scholarship, the Stan Perron Excellence Award, and top-up scholarships from
502 the UWA Safety Net, Wesfarmers Centre of Vaccine and Infectious Diseases, and the Stan Perron
503 Foundation. TS is supported by an MRFF Investigator Award (MRF1195153). We thank the
504 parents and infants who took part in stage one of this trial for their commitment and continuous
505 support. We acknowledge Jane Jones and all members of the Vaccine Trials Group at the Telethon

506 Kids Institute, who were involved in the conduct of stage one of the OPTIMUM study. We would
507 also like to express our gratitude to Kylie Rogers (data manager) and the independent data safety
508 monitoring committee for their valuable contributions and detailed oversight. We thank
509 Catherine Hughes (AM), consumer representative in the OPTIMUM study Steering Committee
510 Group for her valuable input in the design and conduct of this study

511 **Figure 1: Trial profile.** *Legend: *Refers to the same study participant.*

512 **Figure 2. IgG concentration boxplots by antigen type, age, and assigned treatment, pertussis
513 and other antigens. Horizontal dotted line indicates antigen-specific seropositive threshold.**

514 *Legend: PT, pertussis toxin; PRN, pertactin, FIM2/3, fimbriae 2/3; FHA, filamentous hemagglutinin
515 DT, diphtheria toxin; TT, tetanus toxoid.*

516 **Figure 3. IgE concentrations by allergen type, age, and assigned schedule.**

517 **Figure 4. Maximum injection site reaction size in the 7 days after the 6-week vaccine doses**

518 **Figure 5. Injection site pain in the 7 days after the 6-week vaccine doses.**

519 **Figure 6. Highest intensity grade for systemic reactions after the 6-week vaccine doses.**

520 *References*

- 521 1 Zhang L, Prietsch SOM, Axelsson I, Halperin SA. Acellular vaccines for preventing whooping
522 cough in children. *Cochrane Database Syst Rev* 2014; **2014**: CD001478.
- 523 2 Diavatopoulos DA, Mills KHG, Kester KE, *et al.* PERISCOPE: Road towards effective control of
524 pertussis. *Lancet Infect Dis* 2019; **19**: e179–86.
- 525 3 Sheridan SL, Ware RS, Grimwood K, Lambert SB. Number and order of whole cell pertussis
526 vaccines in infancy and disease protection. *JAMA* 2012; **308**: 454–6.
- 527 4 Liko J, Robison SG, Cieslak PR. Priming with whole-cell versus acellular pertussis vaccine. *N Engl*
528 *J Med* 2013; **368**: 581–2.
- 529 5 Estcourt MJ, Campbell DE, Gold MS, *et al.* Whole-cell pertussis vaccination and decreased risk
530 of IgE-mediated food allergy: a nested case-control study. *J Allergy Clin Immunol Pract* 2020;
531 **8**: 2004–14.
- 532 6 da Silva Antunes R, Babor M, Carpenter C, *et al.* Th1/Th17 polarization persists following
533 whole-cell pertussis vaccination despite repeated acellular boosters. *J Clin Invest* 2018; **128**:
534 3853–65.
- 535 7 Mascart F, Hainaut M, Peltier A, Verscheure V, Levy J, Loch C. Modulation of the infant
536 immune responses by the first pertussis vaccine administrations. *Vaccine* 2007; **25**: 391–8.
- 537 8 Aalberse RC, Grüber C, Ljungman M, *et al.* Further investigations of the IgE response to tetanus
538 and diphtheria following covaccination with acellular rather than cellular Bordetella pertussis.
539 *Pediatr Allergy Immunol* 2019; **30**: 841–7.
- 540 9 Holt PG, Snelling T, White OJ, *et al.* Transiently increased IgE responses in infants and pre-
541 schoolers receiving only acellular diphtheria-pertussis-tetanus (DTaP) vaccines compared to
542 those initially receiving at least one dose of cellular vaccine (DTwP) - Immunological curiosity
543 or canary in the mine? *Vaccine* 2016; **34**: 4257–62.
- 544 10 Ausiello CM, Urbani F, la Sala A, Lande R, Cassone A. Vaccine- and antigen-dependent type 1
545 and type 2 cytokine induction after primary vaccination of infants with whole-cell or acellular
546 pertussis vaccines. *Infect Immun* 1997; **65**: 2168–74
- 547 11 Nilsson L, Grüber C, Granström M, Björkstén B, Kjellman NI. Pertussis IgE and atopic disease.
548 *Allergy* 1998; **53**: 1195–201.
- 549 12 Pérez Chacón G, Estcourt MJ, Totterdell J, *et al.* OPTIMUM study protocol: an adaptive
550 randomised controlled trial of a mixed whole-cell/acellular pertussis vaccine schedule. *BMJ*
551 *Open* 2020; **10**: e042838.

- 552 13Totterdell JA, Pérez Chacón G, Estcourt MJ, *et al.* Statistical analysis plan for the OPTIMUM
553 Study: Optimising Immunisation Using Mixed Schedules, an adaptive randomised controlled
554 trial of a mixed whole-cell/acellular pertussis vaccine schedule. *Trials* 2022; **23**.
- 555 14Australian Government Department of Health and Aged Care. The Australian Immunisation
556 Handbook. [Internet]. Available from:
557 <https://www.health.gov.au/resources/publications/the-australian-immunisation-handbook>.
558 Accessed: Oct 14, 2023.
- 559 15National Health and Medical Research Council. The Australian Immunisation Handbook. 6th
560 ed. Canberra; 1997.
- 561 16National Health and Medical Research Council. NHMRC guidance: Safety monitoring and
562 reporting. [Internet]. Available from: [https://www.nhmrc.gov.au/sites/default/files/2023-](https://www.nhmrc.gov.au/sites/default/files/2023-03/NHMRC-guidance-safety-monitoring-and-reporting.pdf)
563 [03/NHMRC-guidance-safety-monitoring-and-reporting.pdf](https://www.nhmrc.gov.au/sites/default/files/2023-03/NHMRC-guidance-safety-monitoring-and-reporting.pdf). Accessed: Dec 17, 2023.
- 564 17McAlister SM, van den Biggelaar AHJ, Thornton RB, Richmond PC. Optimising a 6-plex tetanus-
565 diphtheria-pertussis fluorescent bead-based immunoassay. *MethodsX* 2021; **8**: 101360.
- 566 18Plotkin SA. Correlates of protection induced by vaccination. *Clin Vaccine Immunol* 2010; **17**:
567 1055–65.
- 568 19World Health Organization. Immunological basis for immunization: module 2: diphtheria -
569 update 2009. Geneva: World Health Organization, 2009. Available from:
570 <https://iris.who.int/handle/10665/44094>. Accessed Dec 16, 2023.
- 571 20 World Health Organization. The immunological basis for immunization series: module 3:
572 tetanus. Geneva: World Health Organization, 2018. Available from:
573 <https://iris.who.int/handle/10665/275340>. Accessed Dec 16, 2023.
- 574 21WHO Expert Committee on Biological Standardization. Guidelines on clinical evaluation of
575 vaccines: regulatory expectations. Geneva: World Health Organization, 2017. Available from:
576 [https://cdn.who.int/media/docs/default-source/prequal/vaccines/who-trs-1004-web-annex-](https://cdn.who.int/media/docs/default-source/prequal/vaccines/who-trs-1004-web-annex-9.pdf)
577 [9.pdf](https://cdn.who.int/media/docs/default-source/prequal/vaccines/who-trs-1004-web-annex-9.pdf). Accessed Dec 16, 2023.
- 578 22Edwards KM, Berbers GAM. Immune responses to pertussis vaccines and disease. *J Infect Dis*
579 2014; **209**: S10–5.
- 580 23Miller E, Ashworth LA, Redhead K, Thornton C, Waight PA, Coleman T. Effect of schedule on
581 reactogenicity and antibody persistence of acellular and whole-cell pertussis vaccines: value
582 of laboratory tests as predictors of clinical performance. *Vaccine* 1997; **15**: 51–60.
- 583 24Long SS, Deforest A, Smith DG, Lazaro C, Wassilak SGF, Pennridge Pediatric Associates.
584 Longitudinal study of adverse reactions following diphtheria-tetanus-pertussis vaccine in
585 infancy. *Pediatrics* 1990; **85**: 294–302.

- 586 25Prymula R, Esposito S, Zuccotti GV, *et al.* A phase 2 randomized controlled trial of a
587 multicomponent meningococcal serogroup B vaccine (I). *Hum Vaccin Immunother* 2014; **10**:
588 1993–2004.
- 589 26Prymula R, Siegrist C-A, Chlibek R, *et al.* Effect of prophylactic paracetamol administration at
590 time of vaccination on febrile reactions and antibody responses in children: two open-label,
591 randomised controlled trials. *Lancet* 2009; **374**: 1339–50.
- 592 27Prymula R, Habib A, François N, Borys D, Schuerman L. Immunological memory and
593 nasopharyngeal carriage in 4-year-old children previously primed and boosted with 10-valent
594 pneumococcal non-typeable Haemophilus influenzae protein D conjugate vaccine (PHiD-CV)
595 with or without concomitant prophylactic paracetamol. *Vaccine* 2013; **31**: 2080–8.
- 596 28Pertussis Vaccines: WHO Position Paper, August 2015—Recommendations. *Vaccine* 2016; **34**:
597 1423–5.
- 598 29Gustafsson L, Hallander HO, Olin P, Reizenstein E, Storsaeter J. A controlled trial of a two-
599 component acellular, a five-component acellular, and a whole-cell pertussis vaccine. *N Engl J*
600 *Med* 1996; **334**: 349–55.
- 601 30Greco D, Salmaso S, Mastrantonio P, *et al.* A controlled trial of two acellular vaccines and one
602 whole-cell vaccine against pertussis. Progetto Pertosse Working Group. *N Engl J Med* 1996;
603 **334**: 341–8.
- 604 31Olin P, Rasmussen F, Gustafsson L, Hallander HO, Heijbel H. Randomised controlled trial of
605 two-component, three-component, and five-component acellular pertussis vaccines
606 compared with whole-cell pertussis vaccine. Ad Hoc Group for the Study of Pertussis Vaccines.
607 *Lancet* 1997; **350**: 1569–77.
- 608 32Schwartz KL, Kwong JC, Deeks SL, *et al.* Effectiveness of pertussis vaccination and duration of
609 immunity. *Can Med Assoc J* 2016; **188**: E399–406.
- 610 33Carvalho CFA, Andrews N, Dabrera G, *et al.* National outbreak of pertussis in England, 2011-
611 2012: a case-control study comparing 3-component and 5-component acellular vaccines with
612 whole-cell pertussis vaccines. *Clin Infect Dis* 2020; **70**: 200–7.
- 613 34Pérez Chacón G, Ramsay J, Brennan-Jones CG, *et al.* Whole-Cell pertussis vaccine in early
614 infancy for the prevention of allergy in children. *Cochrane Database Syst Rev* 2021; **9**:
615 CD013682.
- 616 35van Hage M, Hamsten C, Valenta R. ImmunoCAP assays: Pros and cons in allergology. *J Allergy*
617 *Clin Immunol* 2017; **140**: 974–7.
- 618 36Ownby DR, Partridge ME, Wegienka GR, *et al.* Influence of dose and frequency of antigen
619 injection on IgE development in young children: a comparison of fire ant stings and tetanus
620 immunizations. *Ann Allergy Asthma Immunol* 2009; **103**: 337–41.

621 37Grüber C, Lau S, Dannemann A, Sommerfeld C, Wahn U, Aalberse RC. Down-regulation of IgE
622 and IgG4 antibodies to tetanus toxoid and diphtheria toxoid by covaccination with cellular
623 Bordetella pertussis vaccine. *J Immunol* 2001; **167**: 2411–7.

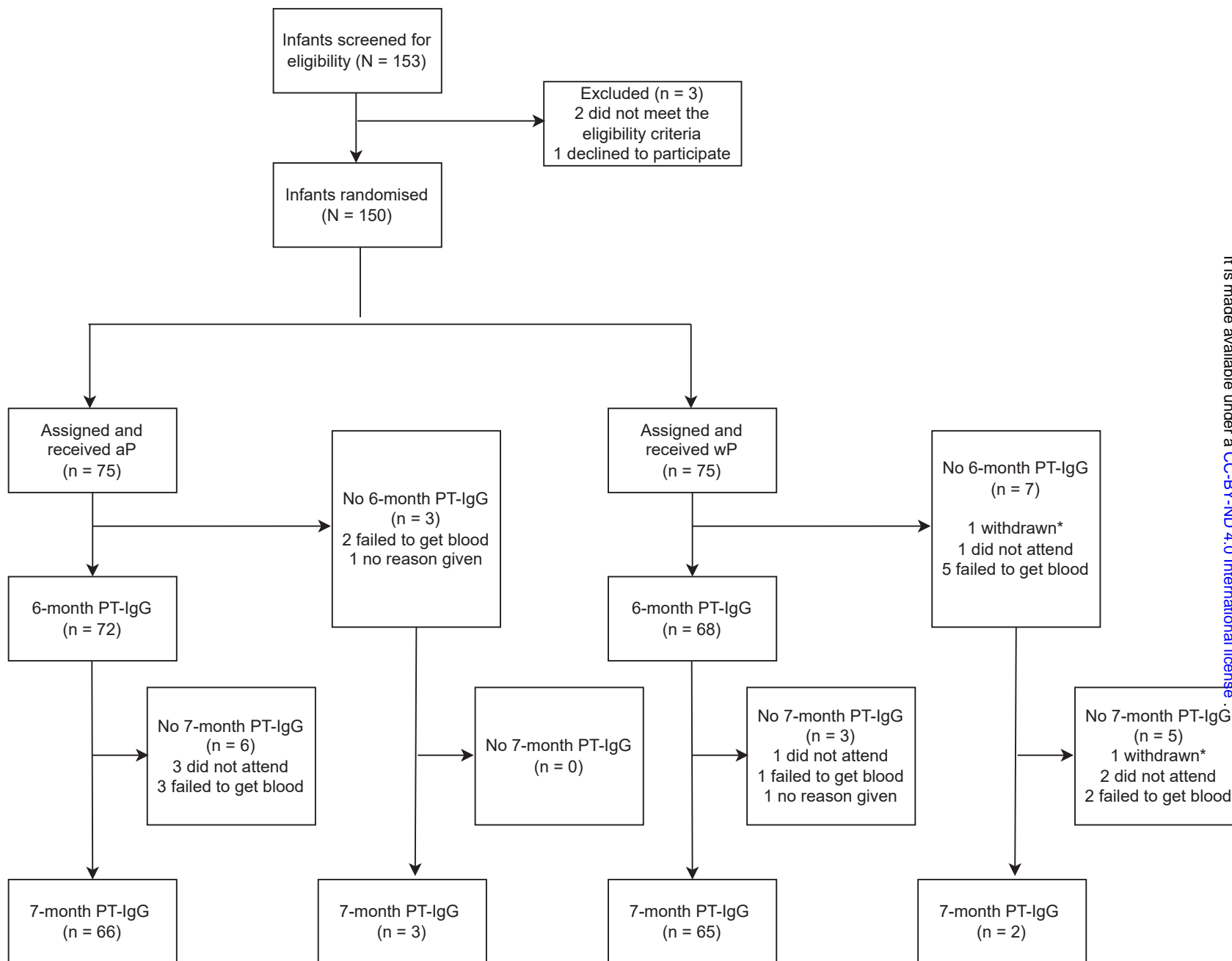


Figure 1: Trial profile. *Refers to the same study participant.

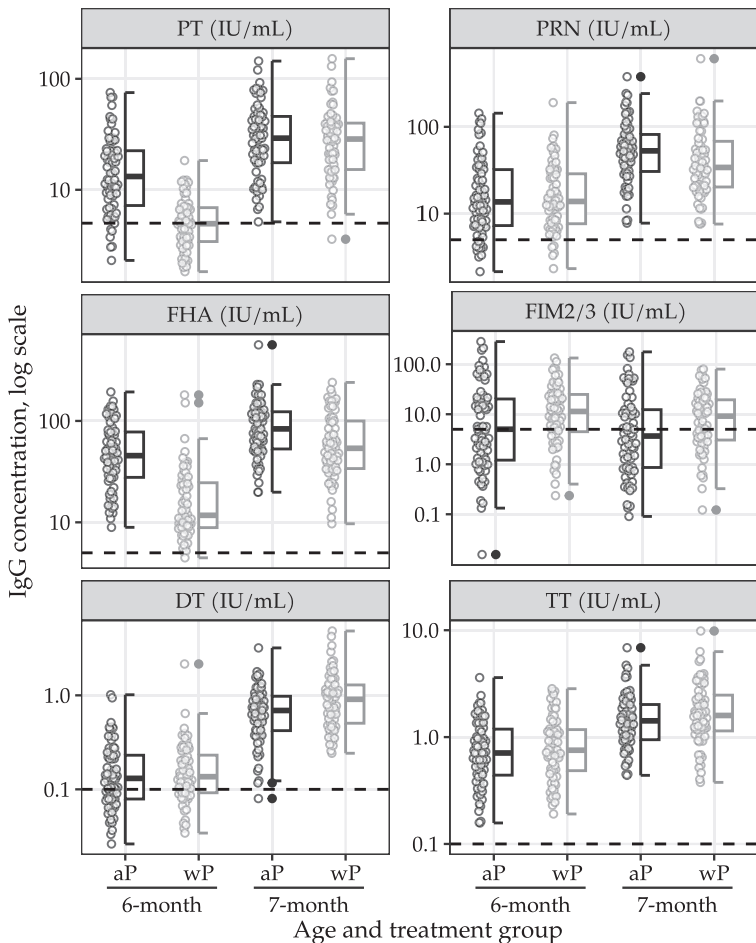


Figure 2. IgG concentration boxplots by antigen type, age, and assigned treatment, pertussis and other antigens. Horizontal dotted line indicates antigen-specific seropositive threshold. PT, diphtheria toxin; PRN, pertactin, FIM2/3, fimbriae 2/3; FHA, filamentous hemagglutinin DT, diphtheria toxin; TT, tetanus toxoid.

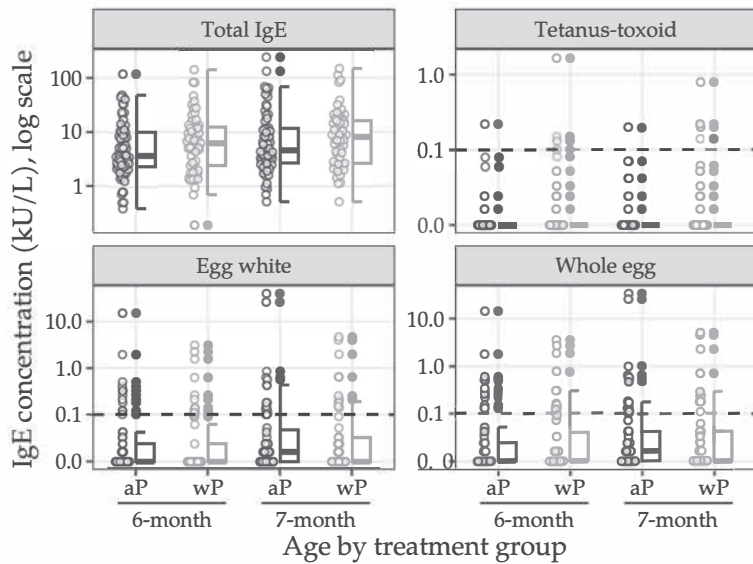


Figure 3. IgE concentrations by allergen type, age, and assigned schedule.

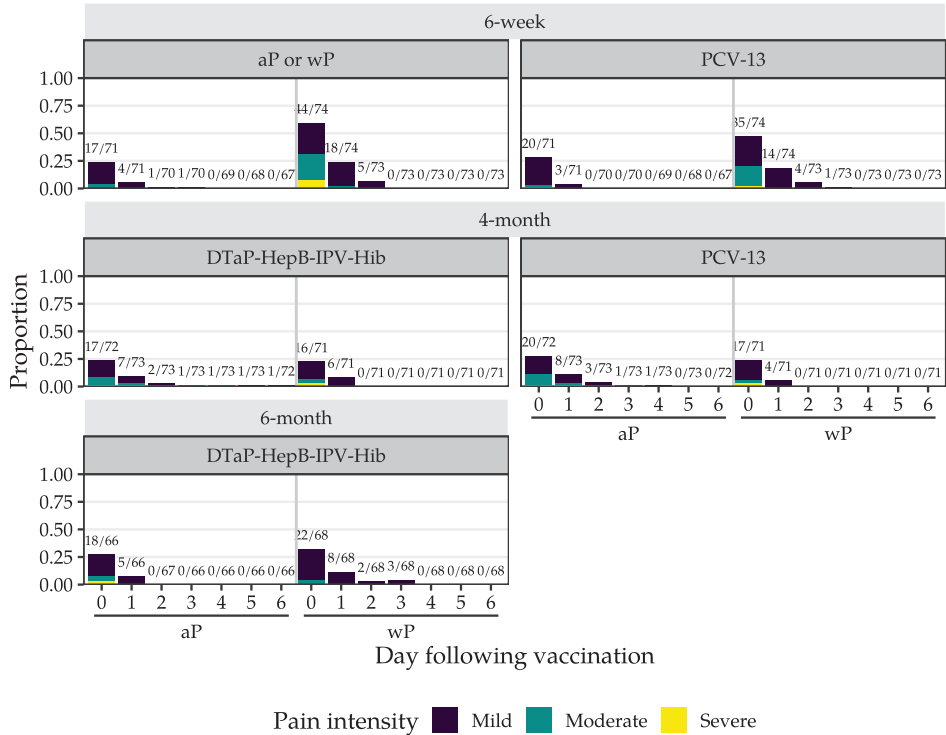


Figure 4. Maximum injection site reaction size in the 7 days after the 6-week vaccine doses.

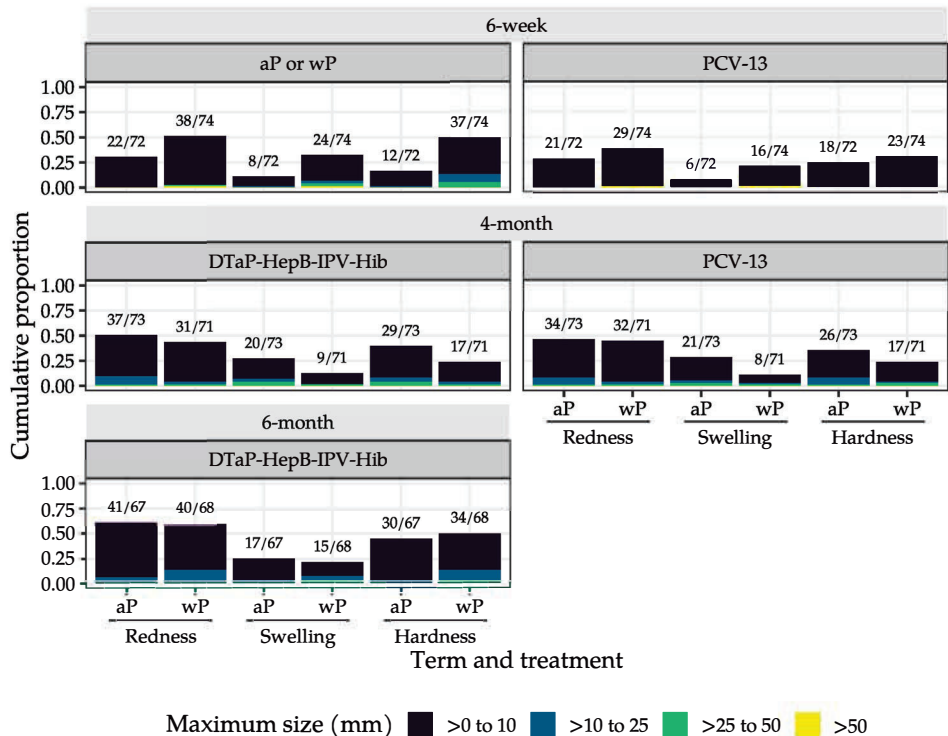
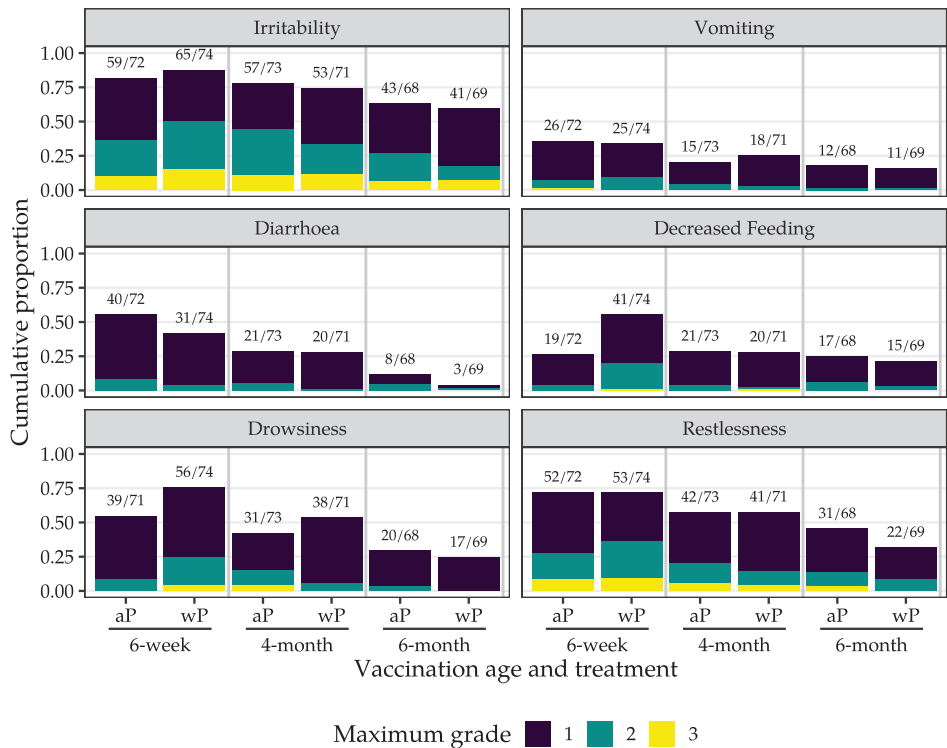


Figure 5. Injection site pain in the 7 days after the 6-week vaccine doses.



Maximum grade ■ 1 ■ 2 ■ 3

Grade 1: easily tolerated
 Grade 2: interferes with normal everyday activities
 Grade 3: prevents normal everyday activities or requires significant medical intervention

Figure 6. Highest intensity grade for systemic reactions after the 6-week vaccine doses.