

1 **TITLE PAGE**

2 **Uncovering the Dual Role of Mitochondrial and Nuclear DNA Variants in Pediatric**
3 **Cardiomyopathies**

4 M. Arda Temena^{1*}, Ebru Erzurumluoglu Gokalp², Ezgi Susam², Duygu Cinar², Hikmet Kiztanir³,
5 Pelin Kosger³, Beyhan Durak Aras², Sevilhan Artan², Oguz Cilingir²

6
7
8
9

10 ¹Science & Technology Policy Studies, METU, Turkey

11 ²Medical Genetics Department, ESOGU Faculty of Medicine, Turkey

12 ³Child Health and Diseases Department, Faculty of Medicine, ESOGU Faculty of Medicine,
13 Turkey

14
15
16
17
18
19
20

21 ***Correspondence:**

22 Mehmet Arda Temena

23 METU, Science and Technology Policy Studies

24 Ankara, Turkey

25 Mail: arda.temena@metu.edu.tr

26 Tel: +905543897331

27
28
29

30

31 **ABSTRACT**

32 Myocardial defects, originating from disruptions in genes affecting mitochondrial
33 proteins interacting with others, have received limited research attention. In our study
34 involving 27 pediatric cardiomyopathy patients, we explored mitochondrial and nuclear genes
35 for four main cardiomyopathy subtypes. Sequencing cardiomyopathy-associated genes in
36 patients was followed by whole mtDNA sequencing in these individuals, with 31 healthy
37 pediatric controls for the latter part. Our findings uncovered significant pathogenic variants:
38 MYH7 variants in three hypertrophic cardiomyopathy cases, a notable TNNC1 variant inherited
39 interestingly in an autosomal recessive manner in two related restrictive cardiomyopathy
40 patients, and a pathogenic TRDN variant in a left-ventricular non-compaction patient. Both a
41 variant in FOXRED1, functioning in mitochondrial complex I stability, and a MT-CO1 variant
42 were detected in two siblings, influencing early onset together. Additionally, a novel MT-RNR1
43 variant (m.684T>C) in one case might explain the phenotype. Our study highlights how both
44 mtDNA and nDNA variants could have interconnected roles in understanding cardiomyopathy
45 genetics. This study emphasizes that the functional studies are needed to recognize this dual
46 relationship within bioenergetic pathways in cardiac muscle.

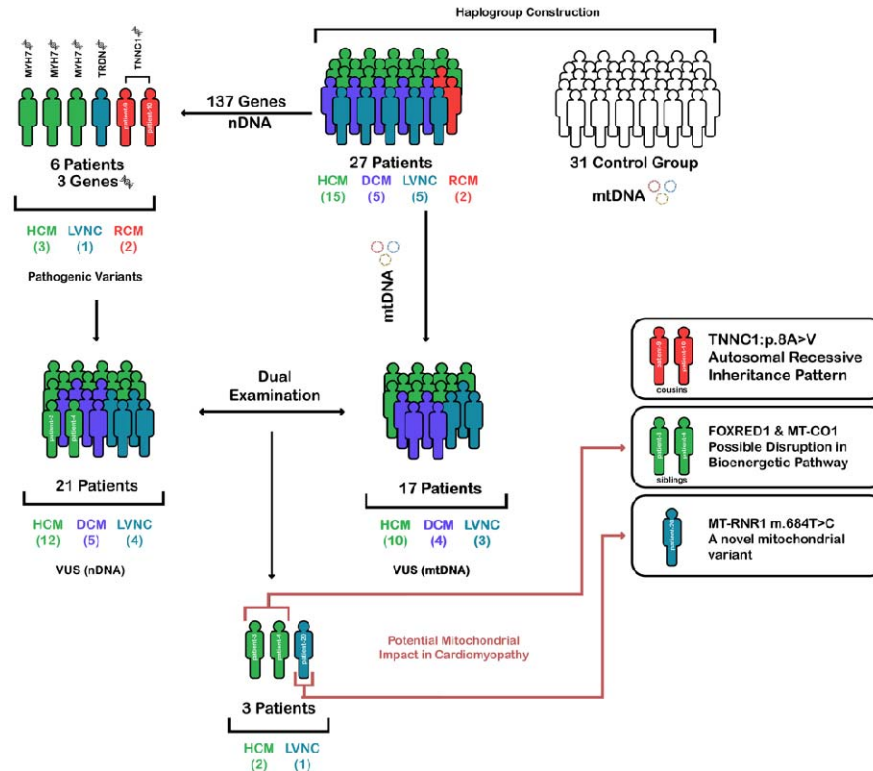
47 **INTRODUCTION**

48 In pediatric population, heart failure can occur when normal myocardium is mostly
49 damaged by an inflammatory or infectious process like myocarditis, metabolic disorders that
50 cause cardiomyopathy, and solely due to hemodynamic imbalances because of syndromic or
51 non-syndromic congenital structural defects(Iaizzo, 2015). Although cardiomyopathies one of
52 the leading causes of heart failure and sudden cardiac death among the young all over the
53 world, present molecular studies are not yet to be concluded and therapeutic approaches are
54 used mostly to relieve the symptoms of the disease except heart transplantation at the end
55 stage of the disease(Lipshultz et al., 2019; Sanganalmath & Bolli, 2013). Therefore, pediatric
56 cardiomyopathies require an elaborative and multidisciplinary evaluation approach starting
57 from diagnosis to prevent rapid progressive case of the disease(Lee et al., 2017).

58 The prevalence of pediatric cardiomyopathy subtypes (classification made by American
59 Heart Association, European Society of Cardiology and World Heart Federation(Elliott et al.,
60 2007; B. Maron et al., 2006)(Arbustini et al., 2014)) differs based on the accuracy of diagnostic
61 evaluations and classification criteria, and the rarity of the disease complicates data collection.
62 Indeed, it has been reported that certain genotypes may correspond to specific types of
63 cardiomyopathies(J. W. McKenna et al., 2017)(Tobita et al., 2018).

64 It is known that some variants in some certain genes known to be directly associated
65 with cardiomyopathies may have non-cardiac systemic or metabolic manifestations(Fiorillo et
66 al., 2016; Jhang et al., 2016). Given the complexity of genetic factors involved, there is limited
67 but growing understanding of the portion of heritability that remains unexplained interactions
68 between genes, and factors that modify the progression of each type of cardiomyopathy(Lee et
69 al., 2017). Pediatric cardiomyopathies can result from various genetic alterations, including
70 metabolic dysfunctions like a diabetic mother and the occurrence of hypertrophic
71 cardiomyopathy-HCM in some storage disorders. The genetic basis for isolated pediatric
72 cardiomyopathies may overlap with those found in adult cases, but the mode of inheritance can
73 be variable and may also occur due to solely *de novo* mutations(Jhang et al., 2016; Lee et al.,
74 2017). Recent research has shown that genetic factors adapting to various inheritance patterns
75 have a significant role in cardiomyopathy which helps to determine a correct
76 classification(Hershberger et al., 2013; Jacoby & McKenna, 2011). Among those, although much
77 smaller than the nuclear genome, studies on the mitochondrial genome also have become the
78 most popular subject not only for cardiomyopathies and particularly for cardiomyocytes(Dorn,
79 2015) but also for investigating other complex diseases(Tashiro, 2018).

80 In this study, we sought to investigate the genetic profile of pediatric patients with
81 primary cardiomyopathy from Turkey's Central Anatolia Region by sequencing cardiomyopathy-
82 related genes and whole mtDNA sequencing. **Figure 1** provides a graphical abstract illustrating
83 the design of the study and significant results. There is a graphical abstract for this study.
84 Additionally, the aim was to assess patients in the primary cardiomyopathy group given the
85 crucial role that mitochondrial proteins play in energy metabolism and bioenergetics in relation
86 to the heart along with nuclear DNA (nDNA) variants.



87

88 **Figure 1. Genetic profiling in pediatric cardiomyopathies.** This graphical abstract
 89 illustrating the comprehensive genetic profiling approach used in this study to sequence
 90 cardiomyopathy-related genes and whole mitochondrial DNA in pediatric patients with
 91 cardiomyopathy.

92 **RESULTS**

93 **Clinical evaluation**

94 All detailed clinical manifestations and other related information are analyzed and will
 95 be available with **Supplementary Table S1** upon reasonable request to corresponding author.

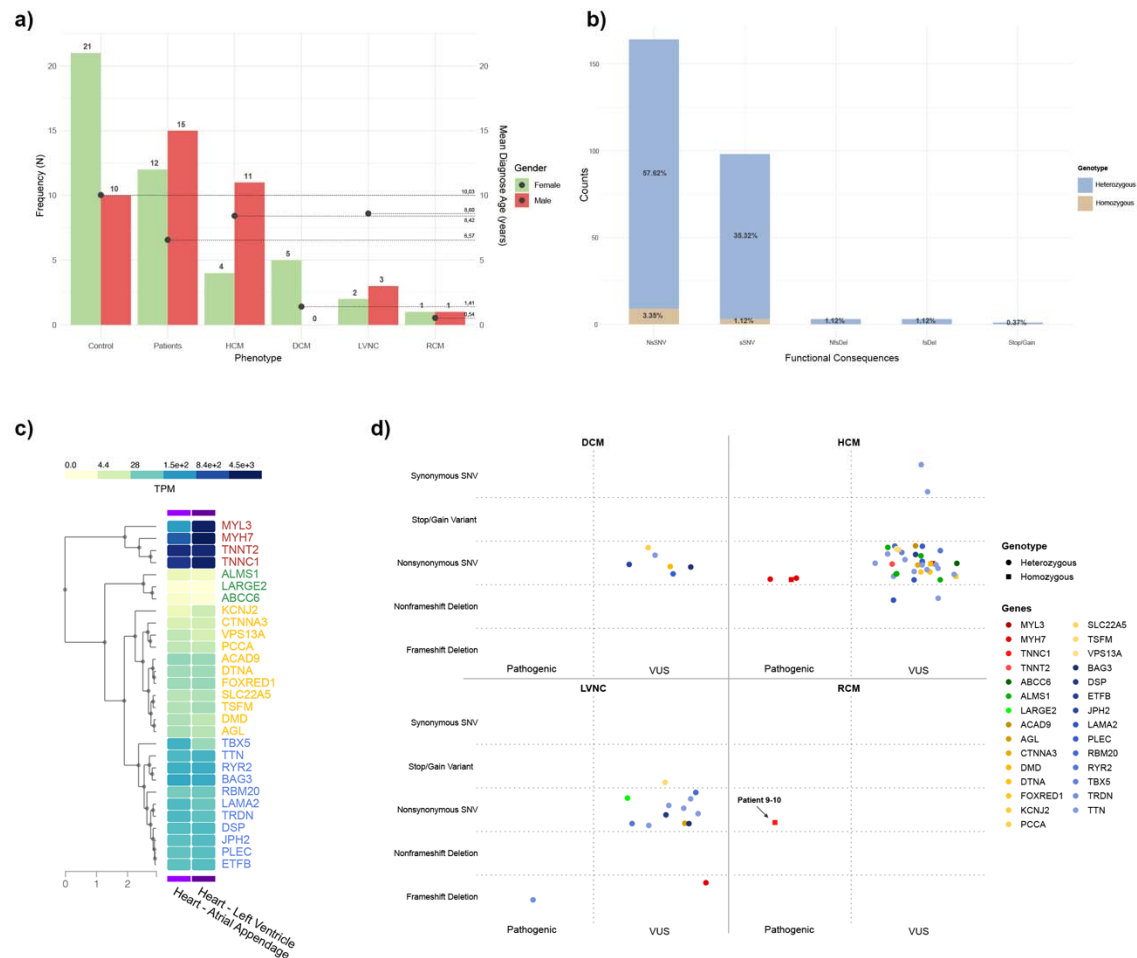
96 **Cardiomyopathy-associated variants**

97 A total of 269 exonic variants were identified after filtering (**Figure 2B**). Out of these
 98 variants, 164 (60.97%) were nonsynonymous SNVs whereas 98 of them (36.43%) were
 99 synonymous. There were also three frameshift deletions (1.12%) and three non-frameshift
 100 deletions (1.12%), and one stop-gain variant (0.37%). Following the variants are classified by
 101 gene, and the count and percentage of variants found in each gene are given, the total number
 102 of variants is 269, of which 12 (4.5%) are homozygous and 257 (95.5%) are heterozygous. The
 103 most frequent variants are found in the gene TTN with 91 (33.8%) variants and the second one

104 is in PLEC gene with 24 (8.9%). A scatterplot that summarizes the variants grouped by genes
105 and corresponding genotypes was given in **Supplementary Figure S1**. The expression levels of
106 these genes in the heart were examined by the GTEx database, and the resulting plot is
107 presented in **Figure 2C**. This analysis revealed four clusters for the genes in which some variants
108 detected and among them, MYH7, MYBP3, TNNT2 and TNNC1 is highly expressed.

109 In the cohort of 27 pediatric patients with cardiomyopathy, 62 variants were identified
110 after evaluation and filtering as VUS or Pathogenic. All these variants grouped by disease
111 subtype can be found in **Figure 2D**. Out of these variants, 57 (91.9%) were heterozygous and
112 five of them (8.1%) were homozygous. Most variants were nonsynonymous SNVs, 55 (88.7%) of
113 which 5 were homozygous. There were also 2 variants each of frameshift deletions (3.2%) and
114 non-frameshift deletions (3.2%), and one stop-gain variant (1.6%). Two variants were
115 Synonymous SNV (3.2%). Out of 62 variants, 5 (8.1%) were pathogenic, of which 3 were
116 nonsynonymous SNV in MYH7 gene leading to HCM, 1 was nonsynonymous SNV in TNNC1
117 leading to RCM, 1 was frame shift deletion in TRDN leading to LVNC. The remaining 57 variants
118 (91.9%) were concluded as VUS.

119 Specifically, patient-8, patient-13, and patient-14 have a pathogenic variant in the MYH7
120 gene, and they are diagnosed with HCM (**Supplementary Figure S2**). Patient-21 has a
121 pathogenic variant in the TRDN gene and patient 9-10, who were mother side cousins and
122 diagnosed with RCM have a pathogenic variant in the TNNC1 (**Supplementary Figure S2**).



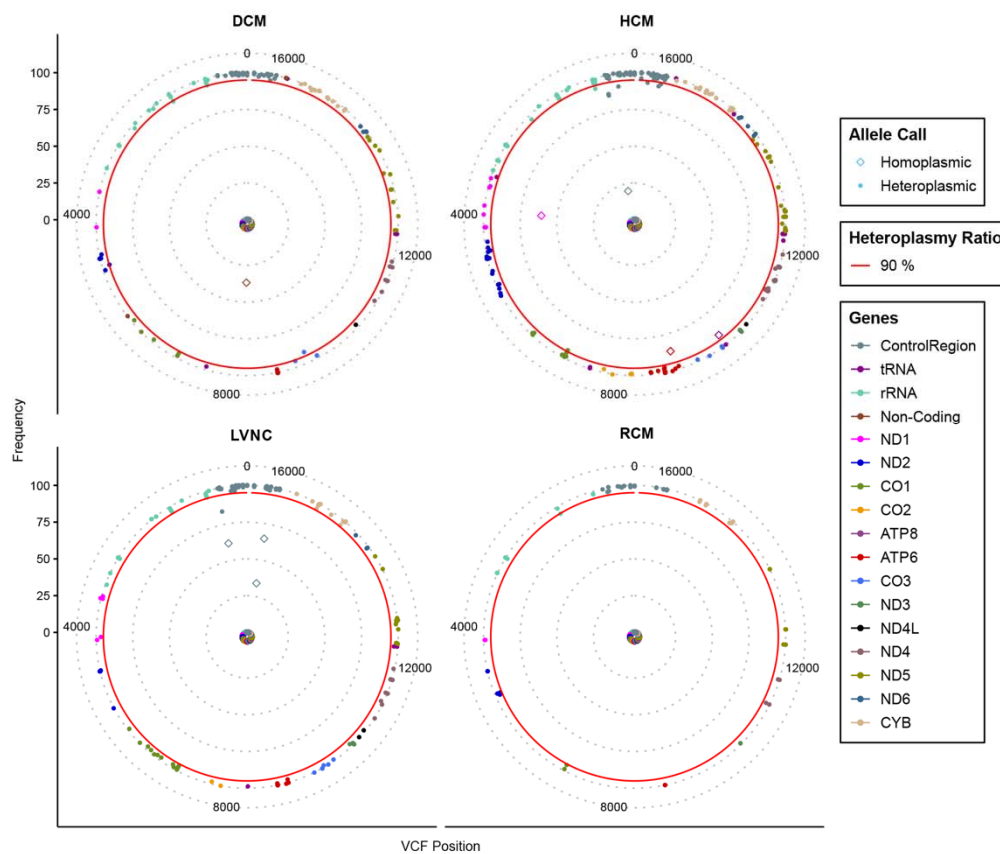
123

124 **Figure 2. General demographic features of the patients and the study highlights. A.**
 125 Distribution of number of patients and control group, and mean age (for mtDNA group) over
 126 cardiomyopathy subtypes. There are four distinct primary cardiomyopathy group (HCM;
 127 hypertrophic cardiomyopathy, DCM; dilated cardiomyopathy, RCM; restrictive
 128 cardiomyopathy, LVNC; left ventricular non compactiomn). **B.** Functional consequences of
 129 nDNA variants from patients' group is given accros their genotype of heterozygosity or
 130 homozygosity. **C.** Expression level of VUS and pathogenic variant-detected genes in heart tissue.
 131 The graph was generated using Genotype-Tissue Expression (GTEx) website. The genes were
 132 colored according to their expression level clusters (Very high expression; red, high expression;
 133 blues, moderate expression; yellow, low expression; green). **D.** Representation of VUS and
 134 pathogenic variants over disease subtypes and genotypes. Each gene was colored according to
 135 their corresponding expression clusters.

136 Mitochondrial variants

137 Results show that in a cohort of 27 pediatric patients with cardiomyopathy, the analysis
 138 of mitochondrial variants revealed that 695 alterations were found in the cardiomyopathy (CM)

139 group, while 315 unique alterations were found in the control group. Examination of different
140 disease groups showed that the highest frequency was found in HCM, with 337 variants,
141 followed by LVNC with 164 variants, DCM with 133 variants, and RCM with 61 variants. On the
142 other hand, ratio of variants over patients per disease subgroup are DCM at 26.6, HCM at 22.0,
143 LVNC at 31.8 and RCM at 30.5. Analysis of the genetic alterations revealed that the most
144 common type of alteration was SNPs, with 677, followed by insertions (INS) with 10, multi-
145 nucleotide polymorphism (MNP) with 3, and Deletion (DEL) with 5 occurrences. In **Figure 3**, the
146 distribution of all variants among the different disease subtypes is shown in the patient group.
147 Additionally, all variants found in patients with control group and only control group were also
148 plotted (**Supplementary Figure S3 and S4**, respectively). However, we evaluated variants that
149 are found only in patient group after comparison with control group.



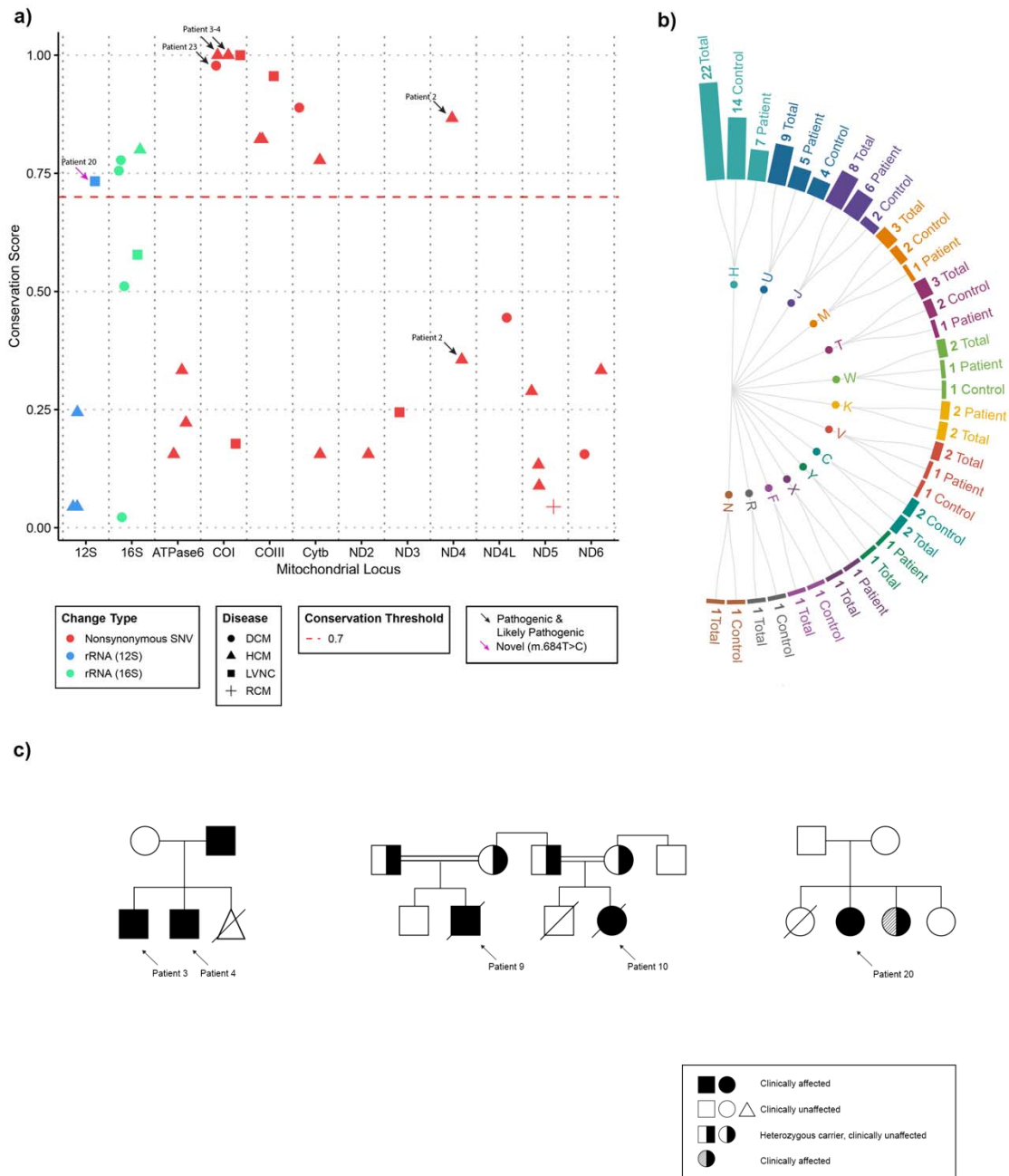
150

151 **Figure 3. Solar Plot of Mitochondrial Variants in Cardiomyopathy Subtypes.**

152 Mitochondrial variants across cardiomyopathy subtypes from mtDNA sequencing are displayed
153 on a solar plot. An identified variant is represented by each dot. According to the plot legend,

154 the inner dashed rings of the plot represent the level of heteroplasmy, and dots are colored
155 according to genes at that region. The position of the mitochondrial base pair is shown on the
156 X-axis. Red line represents a line for specified 90% heteroplasmy level.

157 Results showed that homoplasmic variants were the most common, with 688, while
158 heteroplasmic variants were found in 7 occurrences. Seven variants detected in only five
159 patients showed heteroplasmic features. These are m.16184C>T detected in patient-16 (34%),
160 m.8286T>C detected in patient-18 (37.6%), m.3918G>A detected in patient-22 (30%), m.
161 9053G>A and m.10045T>C (87.5% and 92.3%, respectively) and m.16189Tdel (66.1%) detected
162 in patient-26. All other variants detected in mtDNA show homoplasmic ($\geq 95\%$) feature. After
163 filtering of all variants, mtDNA sequencing results revealed that 34 transition were found, one
164 insertion was detected. In **Figure 4A**, functional consequences and disease subtypes of filtered
165 mtDNA variants were given. The mitochondrial loci were examined, revealing a total of 33
166 unique variants (35 in total) across two rRNA and ten protein coding genes. The 16S locus had
167 the highest number of alterations with six variants, followed by COI with five variants, 12S and
168 ND5 with four variants each. Three genes had three variants each: ATPase6, COIII, and Cytb.
169 Two genes had two variants each: ND4, and ND6. Finally, three genes had only one variant
170 each: ND2, ND3, and ND4L. Also, the mitochondrial haplogroups of patients and controls in the
171 study were analyzed (**Figure 4B**). The most common major haplogroups among patients were H,
172 J, and U while the most common haplogroups among controls were H and U. There was no
173 statistically significant consequence between control and patient group with respect to
174 haplogroups. Other major haplogroups are Y, W, K, M, V, T, X, R, C and N. Additionally, another
175 plot (**Supplementary Figure S5**) was provided where mitochondrial variants were classified
176 according to the patients.



177

178 **Figure 4. Overall identified and filtered mtDNA Variants and Pedigree analysis of the**
 179 **patients. A.** Filtered variants across mtDNA genes and functional consequences of these
 180 variants. Alteration type and the subtype of the patient determines the color and the shape,
 181 respectively. Conservation score line was given as red dashed line. Variants that are indicated
 182 by arrows are either pathogenic or likely pathogenic which are depicted as black or pink color,
 183 respectively. **B.** mtDNA haplogroups distribution for the study cohort. **C.** Three pedigrees are
 184 given for patients, but detailed pedigrees are available on request to corresponding authors.

185 Haplogroup subtypes as well as a comprehensive list of all filtered mtDNA and nDNA
186 variants with their pathogenicity predictions were provided in **Supplementary Table S2A, Table**
187 **S2B, and Table S2C**, respectively, but patient information is removed and available on request.

188 **DISCUSSION**

189 Looking at the distribution of clinical and demographic characteristics among the
190 patients, we see parallel results with a comprehensive study conducted among pediatric
191 cardiomyopathy patients in 2022(Ware et al., 2022). Although the 27% positive family history
192 rate (**Supplementary Table S1A**) among our patients may not directly correspond to the 36%
193 rate in that study, this could be due to the filters used in our study and the low number of
194 patients in our study. In addition, the age of diagnosis was found to be high on average in our
195 patient group. While this could be due to asymptomatic patients receiving a diagnosis only
196 during routine check-ups or other illnesses, socioeconomic factors that affect the access of
197 young children/families to healthcare services in the country should not be ignored. Moreover,
198 one another comprehensive study revealed positive association between cardiomyopathy
199 subtype and age at diagnosis(Bagnall et al., 2022). Similarly, the diagnosis of HCM was made at
200 later ages compared to other subtypes, while in cases of DCM, it was made before the age of 3
201 in our study. However, the low number of patients included in the study and the rarity of the
202 disease may be a reason for the discrepancy in the mean age of diagnosis for LVNC and RCM
203 subtypes.

204 **Hypertrophic cardiomyopathy**

205 Out of 15 HCM patients, either a VUS or pathogenic variant was detected in all of them.
206 In three HCM patients (20% of HCM patients), a pathogenic variant was detected in the MYH7
207 gene, which is consistent with the information that the variants found in HCM children are most
208 commonly in the MYH7 gene(Ware et al., 2022). Among them, patient-13 and patient-14 was
209 heterozygous for a nonsynonymous single nucleotide variant (SNV) in the MYH7 gene as
210 p.Arg403Gln and p.Arg719Trp, respectively. Additionally, patient-8 was found to be
211 homozygous for a nonsynonymous SNV in the MYH7 gene (p.Asp928Val). In fact, MYH7
212 mutations can lead to a direct effect of delayed relaxation due to abnormal myosin function at
213 the molecular level, which in turn causes inefficient energy use at the myocardial tissue

214 level(Alamo et al., 2017; Nguyen et al., 2022; Toepfer et al., 2020). In patients with MYH7, the
215 most common symptom reported was palpitations in one study(Velicki et al., 2020) but other
216 symptoms of HCM are fatigue, chest pain, and syncope(B. J. Maron, 2018). These patients were
217 assigned to different mitochondrial haplogroups, H, U and W respectively.

218 In addition to the MYH7 variants mentioned, all variants identified in patients with HCM
219 have been classified as variants of unknown significance (VUS). A previous functional study of a
220 missense mutation in the MYL3 gene, previously classified as VUS, suggested that the mutation
221 had benign effects(H. Guo et al., 2021). However, a homozygous alteration
222 (MYL3(NM_000258.3):c.170C>A/p.Ala57Asp) with damaging prediction results and the high
223 expression of the gene in left ventricular (**Figure 2C**), and the presence of highly conserved a
224 mitochondrial variant in MT-RNR2 (m.2060A>G) in the patient-11 may possibly contribute to
225 the phenotype altogether. Moreover, a missense variant in TNNT2 gene is identified in patient-
226 17 with asymmetric septal hypertrophy (TNNT2(NM_001276345.2):c.691A>G/p.Ile231Val). It
227 affects the TNNT2 gene, which codes for cardiac troponin T (cTnT), a protein that is part of the
228 troponin complex found in heart muscle and plays an important role in regulating calcium as
229 well as thin actin filament contractility and expressed highly in left ventricle (**Figure 2C**). Apart
230 from this variation, this patient has other missense variants in TTN, PLEC and LAMA2 gene as
231 well as in MT-ND6 and MT-CYB gene latter of which has high conservation rate (78%). One
232 study by Rippol-Vera et al. suggests that some TNNT2 variants may interact with other variants
233 associated with other cardiac diseases or pathways, influencing the way the disease develops
234 and the prognosis(Ripoll-Vera et al., 2016). This suggests that further studies are needed to
235 confirm this, and this patient's variants could be a fine model for a functional study.

236 Furthermore, there are some publications linking RBM20 to cardiomyopathy(W. Guo et
237 al., 2012; Lennermann et al., 2020). Additionally, a study by Zaragoza et al. in 2011, which
238 examined the relationship between mtDNA and cardiomyopathy, classified a variant on MT-
239 ND4 as highly likely to be pathogenic(Zaragoza et al., 2011). In our study, when *in silico* analysis
240 scores for pathogenicity were considered for the variant with its high conservation score on
241 MT-ND4 (m.11084A>G), it is possible that this variant may have created a pathogenic situation
242 in patient-2, in combination with RBM20 variant (RBM20(NM_001134363.3):c.1745A>T /

243 p.Asn582Ile). Next, patient-3 and patient-4 are siblings who have been diagnosed with HCM.
244 Both patients were found to have heterozygous variants in the TTN gene, which is known to be
245 associated with HCM. Additionally, patient-3 and-4 were also found to have heterozygous
246 missense variant in the FOXRED1 (FOXRED1(NM_017547.4:c.658C>T)/p.Pro220Ser). Some other
247 variants in ALMS1 and ABCC6 genes, which were not directly related with primary
248 cardiomyopathy though, were found in patient-4 whereas patient-3 only has additional TTN
249 variants. Therefore, it is not clear how these variants are contributing to the development of
250 HCM in these patients and further research is needed to understand the relationship between
251 these genes and HCM. On the other hand, these siblings also have highly conserved
252 mitochondrial variants in MT-CO1, concluded as pathogenic *in silico* analysis (m.6345T>C) and
253 MT-CO3 (m.9966G>A) gene, with the conservation score of 100% and 82%, respectively. The
254 cytochrome c oxidase, also known as Complex-IV, is the enzyme in the electron transport chain
255 that transfers electrons from cytochrome c to molecular oxygen. It is made up of 14 subunits in
256 humans, but only two of them, MT-CO1 and MT-CO2, have catalytic activity but MT-CO3 do not
257 have this function. Also, one another mitochondrial gene FOXRED1, found in the list of
258 mitochondrial proteins in Mitocarta 3.0(Rath et al., 2021), some variants of which is associated
259 with mitochondrial Complex-I deficiency and related to cardiomyopathy(Mukherjee & Ghosh,
260 2020), encodes structural subunits and assembly factors. Co-existence of these two variants in
261 FOXRED1 and MT-CO1 could explain the early-onset etiology of HCM in these siblings whose
262 father has also has late-onset HCM and pedigree is given in **Figure 4C** as some variants inherited
263 together can cause diverse group of mitochondrial diseases(Fernandez-Vizarra & Zeviani, 2021;
264 Vercellino & Sazanov, 2022). Identified variants in MT-CO1 and FOXRED1 genes can be
265 associated with early-onset cardiomyopathy, emphasizing their relevance within mitochondrial
266 diseases in children, especially in the context of complex I disorders (Koopman et al., 2016).

267 Although recent studies revealed that DTNA variants were commonly found in patients
268 with the left ventricular trabeculation and non-compaction phenotype which are also some
269 manifestations of Barth syndrome(Bottillo et al., 2016; Geske et al., 2018; Moric-Janiszewska &
270 Markiewicz-Łoskot, 2008), they were not sufficient to fully explain the clinical presentation of
271 patient-1 (DTNA(NM_001390.4):c.165A>G/p.Ile55Met) with HCM in addition to presence of a

272 TTN variant. In patient-12, variants in the CTTNA3, TBX5 and PLEC genes were classified as VUS.
273 Also, a missense variant in the alpha-T-catenin gene (CTNNA3) is also identified, which plays a
274 role in how cells stick together and is present in both the heart and brain. This variation may be
275 linked to a type of heart disease called arrhythmogenic cardiomyopathy, but there is no proof
276 that it is directly associated with HCM (B. Li et al., 2020). However, TBX which specifically plays
277 an important role in cardiac contraction (Reactome ID: R-HSA-5576891.1) and the patient's
278 other variant on PLEC, there may be an explanation for the patient's phenotype if a functional
279 study is conducted harboring these mutations even though TBX5 and PLEC are not directly
280 involved in primary cardiomyopathies (OMIM ID: 601282 and 601620). In addition, patient-22,
281 has five variants, three of which are found in the TTN gene. The remaining two variants are in
282 the DMD and RYR2 genes, and it is not clear how they contribute to the patient's condition
283 without further study of the patient's family. Similarly, patient-25 also has three VUS located in
284 the TTN, ALMS1, which is not directly involved in primary isolated cardiomyopathies, and
285 SLC22A5 genes, all of which are missense mutations. Lastly, patient-6 has a homozygous
286 nonsynonymous SNV in the KCNJ2 gene. Screening the KCNJ2 gene in individuals is clinically
287 significant in syndromic cases because a significant proportion of individuals with pathogenic
288 variants in this gene present with distinct symptoms however this does not explain isolated
289 phenotype of this patient's HCM. Despite being found in patients with both sustained
290 monomorphic ventricular tachycardia (SMVT) and DCM, there is currently insufficient evidence
291 to establish a link between the KCNJ2 gene variant and HCM(Kimura et al., 2012; Ortega et al.,
292 2016).

293 **Dilated cardiomyopathy**

294 In total, patient-18 has variants in the MT-CYB, 16S (MT-RNR2), TTN, DMD, and PLEC
295 genes. Patient-23 has variants in the MT-COI and MT-ND6 genes. Next, patient-24 has two
296 variants in the mitochondrial 16S locus. Additionally, patient-5 has mtDNA variants in the 16S
297 and MT-ND4L genes along with one in BAG3 gene, and patient-15 had only nDNA variants in the
298 JPH2 and PCCA genes latter of which associated with propionicacidemia.

299 Nonsyndromic DCM is a type of heart condition that is typically inherited in an
300 autosomal dominant way. However, there are some subtypes of this condition, such as JPH2-

301 and TNNI3-related nonsyndromic DCM, that can also be inherited in an autosomal recessive
302 way. When a proband is found to have one of the genetic variants known to cause this
303 condition, it is important to consider the risk of DCM for other family members who may also
304 carry the same genetic variant to explain underlying phenotype (Hershberger & Jordan, 2022).
305 Based on available research, it seems that when there is a loss of function in the JPH2 gene
306 passed down through the autosomal recessive method, it is linked to a severe form of DCM that
307 presents at an early age. On the other hand, when the pathologic variants of JPH2 are inherited
308 in an autosomal dominant manner, it leads to a condition called HCM through a mechanism
309 known as dominant negative effect (Parker et al., 2023). Nevertheless, it may not be sufficient
310 to explain the clinical presentation without conducting a family analysis, but it may also be
311 necessary to evaluate it in co-occurrence JPH2 variant
312 (JPH2(NM_020433.5):c.1879A>G/p.Ile627Val) with a PCCA variant
313 (PCCA(NM_000282.4):c.522G>A/p.Met174Ile) found in in the patient-15. Other studies have
314 shown that certain pathogenic variants can explain the clinical presentation even in
315 combination with other variants in other genes(Riemersma et al., 2017; Sabater-Molina et al.,
316 2016).

317 For patient-18, it is challenging to determine the role of pathogenic variants in the TTN
318 gene in DCM because a significant number of controls from other studies also have truncating
319 variants in this gene and not all families with DCM have a clear pattern of inheritance of the
320 variants. Additionally, some research have shown that the truncating variants found in
321 individuals with DCM tend to cluster in a specific region of the protein encoded by the TTN
322 gene. So far, missense variants in the TTN gene have not been linked to the development of
323 DCM (Herman et al., 2012; Norton et al., 2013; Roberts et al., 2015). In addition to other
324 alterations in nDNA of this patient, a particular alteration in a specific region of MT-CYB
325 (m.15497G>A), which is highly conserved across different forms and species, has been
326 identified. One study looked at blood and heart tissue samples from people who died suddenly
327 from CM and 151 healthy controls. They found that a specific genetic variation (m.15497G>A) in
328 the MT-CYB gene occurred more frequently in the sudden cardiac death cases. This variation is

329 in a highly conserved part of the gene (89%), and the researchers suggest that it may be
330 associated with reduced energy metabolism (Kobayashi et al., 2011).

331 Mitochondrial variants at the region whose conservation score bigger than 70% in
332 patient-5 and patient-24 is in MT-RNR2 (m.2294A>G and m.3159AA>T, respectively), in MT-CO1
333 (m.6261A>G) for patient-23, which are the only changes in these patients. Some studies
334 investigated variants in rRNA and found that some pathogenic variants have been associated
335 with certain diseases in literature(Elson et al., 2015; Gutell et al., 2002; Smith et al., 2013).
336 However, there is currently no tool available to evaluate human-specific MT-RNR1 and MT-
337 RNR2 variants in silico other than methods like those used to study evolutionary ribosomal RNA
338 pathogenicity like HIA (Vila-Sanjurjo et al., 2021). It is suggested that mitochondrial rRNA
339 mutations can affect mitochondrial translation and can cause or modify the phenotype of
340 cardiomyopathy(D. Li et al., 2019; S. Li et al., 2018; Santorelli et al., 1999). On the other hand, it
341 is reported that BAG3 is essential for maintaining mitochondrial homeostasis, and changes in
342 BAG3 expression have an adverse effect on cardiomyocyte function, which can shape the clinic
343 of patient-5 with its mtDNA variants (Tahrir et al., 2017; Wang et al., 2023). A previously
344 reported missense mutation in the MT-CO1 gene has been suggested to have a high likelihood
345 of being associated with myopathy (Zaragoza et al., 2011). It has been noted that MT-CO1 plays
346 a role in Complex IV formation and is important in the context of cardiomyopathies (Huigsloot
347 et al., 2011). Since it is not possible to overlook the cardiac involvement of myopathy, it is not
348 surprising that an effective change in this gene could cause cardiomyopathy. However, ClinVar
349 submissions of these variants are likely benign regarding other mitochondrial diseases,
350 maternal segregation analyses are still needed to clarify the inheritance for DCM.

351 **Left-ventricular non-compaction**

352 Research has shown that in nearly half of LVNC cases, there are variants found mostly in
353 genes associated with other cardiac-related conditions. However, it is unclear what the
354 definition of the phenotype or the pathogenicity of these variants is (van Waning et al., 2018).
355 Additionally, it has been suggested that isolated LVNC may be a symptom or a phenotype
356 rather than a distinct disease, as few genetic variants was found in cases that also had other
357 cardiomyopathy symptoms (Hershberger et al., 2017; Miller et al., 2017).

358 For the five cases of LVNC, one pathogenic heterozygous frameshift deletion was found
359 in TRDN gene and other variants were classified as VUS in TSFM, MYH7, TTN, AGL, TRDN, RYR2,
360 RBM20, BAG3, DSP and LARGE2 genes. Patient-21 who has a frameshift deletion in TRDN
361 (TRDN(NM_006073.4):c.423delA/p.Glu142fs) in TRDN gene, classified as pathogenic, but
362 homopolymer nature of the region requires Sanger sequencing to conclude the disease-variant
363 association. Also, this patient has a VUS in RYR2 gene that can contribute to the phenotype
364 because TRDN is a protein that connects the RYR2 gene with some other cardiometabolic
365 proteins and plays a role in regulating the release of calcium in the sarcoplasmic reticulum,
366 which is showed in a functional study (Rebs, 2021).

367 A frameshift deletion in MYH7 (MYH7(NM_000257.4):c.575delT/p.Ile192fs), a
368 heterozygous stop variant in TSFM (TSFM(NM_001172696.2):c.5C>A/p.Ser2*), and a missense
369 variant in TTN were identified in patient-19. Some biallelic mutations associated with MYH7
370 have been reported to be associated with LVNC (Kolokotronis et al., 2019). There are also
371 publications linking TSFM gene with mitochondrial cardiomyopathies (Takeda, 2020). Thus,
372 although these mutations are expected to explain the phenotype to some degree, they are
373 classified as VUS. On the other hand, a mutation in TSFM encoding one of the mitochondrial
374 translation prolongation factors has been associated with isolated fatal neonatal HCM in one
375 family (Smeitink et al., 2006). Considering the clinical overlaps of HCM and LVNC (Lin et al.,
376 2021), it is appropriate to re-evaluate these variants after segregation analysis. In addition, two
377 missense variants in TTN and one in RBM20
378 (RBM20(NM_001134363.3):c.3249G>C/p.Glu1083Asp) were found in patient-26 and classified
379 as VUS. Similarly, many studies have reported that LVNC is caused by mutations in a RBM20.
380 One is the first to report that reduced activity of RBM20 can lead to LVNC due to TTN mis-
381 splicing. Some other studies also revealed that truncating TTN variants are the leading cause for
382 LVNC and introduce variants in RBM20 as a novel etiopathology for LVNC (Anna et al., 2020;
383 Sedaghat-Hamedani, Haas, Zhu, Geier, et al., 2017; Sedaghat-Hamedani, Haas, Zhu,
384 Kayvanpour, et al., 2017). One another study also presented a patient with an early onset DCM
385 carrying a combination of (likely) pathogenic TTN and RBM20 mutations (Gaertner et al., 2021).
386 Additionally, one research found that the splicing of RBM20 target genes is affected in the

387 mutation carrier and revealed RBM20 haploinsufficiency presumably caused by the frameshift
388 mutation in RBM20. The results showed that the same variant in RBM20 can cause DCM, with
389 or without the LVNC phenotype (Sun et al., 2020). Understanding of the variant pathogenicity
390 across the RBM20-coding transcript is needed with segregation analysis for this patient and
391 others who have LVNC, and it's important for the future management of the disease. For
392 patient-27 who has three heterozygous missense variants each in DSP
393 (DSP(NM_004415.4):c.3226C>T/p.Leu1076Phe), BAG3
394 (BAG3(NM_004281.4):c.461T>G/p.Val154Gly) and LARGE2
395 (LARGE2(NM_001300721.2):c.385C>T/p.Leu129Phe), there is no clear explanation for the
396 phenotype without a family study. However, a specific truncating variant was reported in the
397 DSP gene is associated with the development of LVNC and severe early-onset heart failure even
398 though it is typically associated with DCM (Williams et al., 2011). The study findings reveal a
399 range of genetic variations in individuals with LVNC. The various genetic makeup may account
400 for the different clinical presentations observed in patients with LVNC.

401 In addition to missense TTN variants, three variants that have high conservation scores
402 in MT-CO1 (m.6546C>T), MT-CO3 (m.9948G>A) and MT-RNR1 (100%, 96%, 73%, respectively)
403 were detected in patient-20 whose pedigree is given in **Figure 4C**, and the variant in MT-RNR1
404 (m.684T>C) could not be found in the databases and seems a novel homoplasmic variant.
405 Patient's one sibling died of an unknown cause and another sibling also manifests LVNC and
406 some other dysmorphic findings caused by additional *de novo* microdeletion revealed by
407 microarray analysis. In a study that investigates the mitochondrial rRNA encoding the 12S
408 subunit of mitochondrial rRNA, it was stated that LVNC may be associated some variants in this
409 locus. However, they also suggested that the 12S rRNA, MT-RNR1, would have a more smaller
410 effect than other mutations found that changed its conformation (Tang et al., 2010). One study
411 suggests that analyzing mtDNA sequence variants in myocardial tissue samples could provide
412 useful information for understanding the causes of LVNC (Liu et al., 2013). In this study,
413 researchers found that the mtDNA copy number in the myocardium of LVNC patients was lower
414 compared to healthy controls. This lower mtDNA copy number, in combination with

415 morphological abnormalities of mitochondria, suggests that there may be dysfunction of the
416 mitochondria which may play a role in the development of LVNC.

417 **Restrictive cardiomyopathy**

418 Patients-9 and patient-10, who are cousins on their mother's side, whose pedigree is
419 shown in **Figure 4C**, were found to have a homozygous pathogenic variant in the TNNC1 gene
420 (TNNC1:p.8A>V). The TNNC1 gene codes for troponin C protein, which is responsible for
421 contractility in the heart muscle and is one of the three members of the complex troponin
422 family. Pathogenic variants of TNNC1 have been associated with DCM and HCM in OMIM and
423 many reported variants in this gene support this association (Parvatiyar et al., 2012; Pinto et al.,
424 2011). Although HCM is typically inherited in an autosomal dominant manner, the presence of
425 homozygous situation in our study, with another mutation in the same gene, causing RCM in a
426 case study presented by Ploski et al., suggests that pathogenic variants in this gene may have an
427 autosomal recessive inheritance pattern for RCM (Ploski et al., 2016). Also, the variability of
428 Ca²⁺ concentration, which affects myofilament function for each subtype, can create a
429 difference for the expressional variability of cardiomyopathy. For example, high Ca²⁺ levels
430 during contraction have been associated with hypertrophy in heart muscle, while low levels
431 have been associated with dilation. Hence, the importance of investigating the role of
432 mitochondria, which play a significant role in the storage of cytosolic Ca²⁺, in terms of the full
433 diagnosis, progression, and treatment of the disease has been approved (Willott et al., 2010).

434 As stated by the ACMG, interpreting mitochondrial variants is complex and challenging
435 (Richards et al., 2015). Due to the unique characteristics of mitochondrial inheritance, such as
436 heteroplasmy and homoplasmy and specific geographic regions, certain tools should be
437 developed to specifically analyze mtDNA variants. In addition to rare cases, mtDNA, which is
438 transmitted through the maternal line and is different from Mendelian inheritance, plays an
439 important role in the evolutionary process of humans and diseases (Wallace, 2015).
440 Haplogroups, have been the subject of many recent studies, particularly in the context of
441 neurodegenerative diseases and regional/geographic predispositions to certain disorders
442 (Chinnery & Gomez-Duran, 2018; Wallace, 2018). In this study, we investigated possible genetic
443 explanations of pediatric cardiomyopathies by analyzing both nuclear DNA and mitochondrial

444 DNA. Our study is also the first high-throughput sequencing study of mtDNA in Central Region
445 of Anatolia Peninsula (Turkey) that aims to contribute to the country's mtDNA haplogroup map
446 by interpreting ethnic/regional haplogroup variations. Since it is discussed that genetic
447 predispositions to diseases can be geographically determined(Yusuf et al., 2001), this study
448 conducted in our region presents a promising analysis for promising targeted mitochondrial
449 therapies developed recently(Nissanka & Moraes, 2020). Even though the sample size is not
450 diverse enough to generalize the findings to the larger non-syndromic or isolated pediatric
451 cardiomyopathy population and the study only examined a limited number of genes, this
452 combined analysis could provide insights into the etiology of certain idiopathic cardiovascular
453 diseases.

454 In addition, considering the large size of TTN and many variants found in this gene, it can
455 be argued that some functional studies should concentrate only on TTN. Furthermore, in this
456 study, we identified 10 novel variants in four genes that could potentially be directly related to
457 cardiomyopathy and two genes that could be indirectly related. Pediatric manifestations with
458 their genetic analyses included in this study will be useful for pediatricians to support the use of
459 genetic testing and for researchers to investigate new genetic factors. In addition, it is essential
460 to evaluate mtDNA variants together with nuclear DNA variants, especially in tissues where
461 bioenergetic pathways are actively involved in the pathology.

462 **MATERIALS AND METHODS**

463 **Ethical approval**

464 This study was conducted according to the guidelines of the Declaration of Helsinki and
465 approved by the clinical practice ethics committee of a hospital. Informed consent was
466 obtained from the parents or legal guardians of the probands, and each participant provided
467 informed consent. We also followed STROBE guidelines for reporting observational studies(von
468 Elm et al., 2007).

469 **Diagnosis**

470 All 27 patients were evaluated in pediatric cardiology department between 2018-2020.
471 Transthoracic echocardiogram (TTE) and a 12-lead electrocardiogram (ECG) was used as initial
472 modalities and, 24- to 48-hour ambulatory electrocardiographic monitoring, exercise TTE,

473 intraoperative transesophageal echocardiogram (TEE), cardiac magnetic resonance imaging
474 (MRI) was used when necessary.

475 Children with positive family history and left ventricular wall thickness more than 2
476 standard deviations (SD) from the predicted mean and without family history, more than 2.5
477 SDs were diagnosed with hypertrophic cardiomyopathy (HCM) according to 2020 AHA/ACC
478 guidelines (null et al., 2020). Children with reduced left ventricular ejection fraction (LVEF)
479 (<50%) with enlarged left ventricle volume in the absence of other cardiac findings including
480 coronary artery disease, primary valvular heart disease in addition other systemic and extrinsic
481 reasons including hypothyroidism, toxins and medications were diagnosed with dilated
482 cardiomyopathy (DCM) (Libby et al., 2021). There were only two having restricted
483 cardiomyopathy (RCM) who were children of first-degree cousins. They had reduced ventricular
484 filling with normal/near normal ejection fraction and myocardial thickness and mildly reduced
485 diastolic volumes. These patients were diagnosed with restrictive cardiomyopathy (RCM) in the
486 presence of all these findings according to ESC (Elliott et al., 2007). The left ventricular non-
487 compaction (LVNC) group was diagnosed according to morphological diagnostic criteria stated
488 by Jenni et al; multiple trabeculations in echocardiographic imaging, multiple communicating
489 ventricular cavities and intertrabecular recesses in color Doppler imaging, recesses within the
490 middle and apical side of the ventricle, and a noncompacted to compacted ratio more than 1.4,
491 in addition to the endocardium with two layered constructions (Jenni et al., 2001).

492 The subjects were then elaboratively evaluated by clinical geneticists to exclude
493 secondary causes of cardiomyopathy, including RASopathies, muscular dystrophies, Barth
494 syndrome and other metabolic disorders. They were evaluated for neurodevelopmental
495 milestones, intellectual capability, and underwent a systemic examination with anthropometric
496 measurements, dysmorphic feature inspection, organomegaly examination, and neurological
497 examination. Perinatal history and pedigree analysis were also assessed, and ophthalmological
498 and auditory examinations were done if needed. Initially, there were 32 participants, but one of
499 them voluntarily withdrew from the study, resulting in a total of 31 participants for the control
500 group. They had no history of heart problems or familial heart and syndromic findings, as
501 confirmed by cardiology and genetics clinic.

502 **Demographic features**

503 There are a total of 27 patients 12 of whom were female and 15 were male. The mean
504 diagnose age ranged from 0.54 for RCM, 1.41 for DCM to 8.6 for LVNC, with HCM having the
505 second highest mean diagnose age of 8.42 years. The control group included 31 individuals, 21
506 of whom were female and 10 were male, with a mean age of 10.03 years. The figure (**Figure 2A**)
507 summarizes this feature across phenotypes. Detailed demographic and clinical summary of the
508 study participants can be found in **Supplementary Table S1A**.

509 **Sample collection and DNA isolation**

510 Approximately 400 µl of peripheral whole-blood samples from 58 individuals were
511 collected into EDTA containing tubes. MagPurix robotic system and its isolation kit were used in
512 accordance with the manufacturer's instructions. Around 100 µl of total genomic DNA was
513 isolated at a concentration range of 30-100 ng/µl measured by NanoDrop and these samples
514 were stored at -20°C.

515 **Sequencing and bioinformatic analyses**

516 Library was prepared according to Illumina Trusight Enrichment and clinical exome
517 sequencing was performed in Illumina-NextSeq500 platform. Mitochondrial DNA was
518 subsequently sequenced on IonTorrent-S5 platform. The library preparation was conducted
519 using the Ion AmpliSeq™ Library Kit 2.0 and Precision-ID mtDNA Whole Genome Panel by
520 following the manufacturer's guide. Sequenced output data (fastq files) were aligned to the
521 related genes of human reference genome (UCSC hg19/GRCh37) by BWA-mem (v.0.7.12) (H. Li,
522 2013) and quality assessments were performed by using FastQC(S. Andrews, 2010). After
523 quality trimming and filtering the bad reads out, variant calling was performed by GATK
524 (v.4.0)(A. McKenna et al., 2010). For mtDNA variant calling mtDNA_rCRS (NC_012920.1) is used
525 as a reference genome for alignment(R. M. Andrews et al., 1999) and Torrent Variant Caller
526 plugin v.5.2.1.39 was used for variant calling. Confirmation of meaningful variants using Sanger
527 sequencing has not yet been carried out except novel mtDNA variant (m.684T>C).

528 All variants identified in 137 genes that are associated cardiomyopathy and in mtDNA
529 were obtained in VCF format then filtered according to following criteria: 1) Variants at the
530 exonic regions with AF<0.01 and read depth of at least 20x were included. 2) mtDNA variants

531 were compared to the control group variants, and if they were found in the control group, they
532 were not considered for evaluation.

533 General data handling was performed with and “R” base functions and (version 4.2.1, [R
534 Core Team 2022]), and R packages; ggplot2 and dplyr for plotting(*Dplyr: A Grammar of Data*
535 *Manipulation*, 2021; Wickham, 2016). After filters were established for nDNA variants, *in silico*
536 evaluations of the variants were carried out using VEP through different prediction tools and
537 PHACT, which was recently developed(Kuru et al., 2022; McLaren et al., 2016). For mtDNA
538 variants, ‘bam’ files were converted to ‘fasta’ files through MitoSuite, which would give the
539 consensus sequence of the reading. Variant analyses were performed on these ‘fasta’ files
540 through Mitomap-MITOMASTER(Lott et al., 2013). Additionally, these variants identified in the
541 patient group were also investigated *in silico* through PolyPhen2-HumDiv and HumVar,
542 MSeqDR, and HmtVar(Preste et al., 2019; Shen et al., 2018). Population data and conservation
543 scores were obtained through Mitomap. For the mtDNA-phylogenetic tree, variants were
544 evaluated and haplogroups were retrieved from Haplogrep (v.2) using
545 PhyloTree17(Weissensteiner et al., 2016). Chi-squared tests were performed using stats
546 package of R to compare the distribution of distinct haplogroups between patient and control
547 groups and $p < 0.05$ was determined as significant. The mitochondrial solar plot shown in the
548 figure was adapted from Stephen Turner's github account(*Stephenturner/Solarplot:*
549 *Mitochondrial Solar Plot*, n.d.).

550 **Data availability**

551 Sequencing data for cardiomyopathy-associated genes in VCF file except five patients
552 who are not alive will be shared reasonable request to corresponding author. Moreover,
553 aligned mtDNA-seq data for 27 patients and 31 individuals in control group are publicly
554 available upon publication on Sequence Read Archive (SRA) under BioProject Number
555 PRJNA1028644 on NCBI. Notably, unfiltered variants for both mtDNA and nDNA are provided in
556 **Supplementary Table S1B, Table S1C, and Table S1D** along with the information of 137 genes.

557 **ACKNOWLEDGEMENTS & FUNDING**

558 The designed study has been supported by scientific grant programs within the
559 university under the supervision of Dr. Ebru Erzurumluoglu Gökalp to support Mehmet Arda
560 Temena's master thesis.

561 **FIGURE LEGENDS**

562 **Figure 1.** Genetic profiling in pediatric cardiomyopathies.

563 **Figure 2.** General demographic features of the patients and the study highlights.

564 **Figure 3.** Solar Plot of Mitochondrial Variants in Cardiomyopathy Subtypes.

565 **Figure 4.** Overall identified and filtered mtDNA Variants and Pedigree analysis of the
566 patients.

567 **SUPPLEMENTARY FILES**

568 **Supplementary Figures**

569 **Supplementary Figure S1.** Summary of nDNA Variants Grouped by Genes and
570 Genotypes.

571 **Supplementary Figure S2.** Summary of VUS and Pathogenic nDNA Variants Grouped by
572 Genes, Genotypes, and Cardiomyopathy Subtypes

573 **Supplementary Figure S3.** All mtDNA Variants Identified in Patients.

574 **Supplementary Figure S4.** All mtDNA Variants Identified in Control Group.

575 **Supplementary Figure S5.** Filtered mtDNA Variants Grouped by Genes, Genotypes, and
576 Cardiomyopathy Subtypes

577 **Supplementary Table S1.** Detailed information of patients and all 137 nDNA genes and
578 variants

579 **Supplementary Table S2.** Detailed haplogroup information and mtDNA variants.

580 **CONFLICT OF INTEREST**

581 Authors declare no conflict of interest.

582 **AUTHOR CONTRIBUTIONS**

583 MAT and EEG conceptualized and designed the project. Funding acquisition was done by
584 EEG and OC. MAT and DC performed all wet-lab procedures. MAT performed bioinformatics
585 analyses and visualized the data. MAT, EEG and ES interpreted the results. PG and HK were

586 involved in diagnosing the patients. MAT, EEG, and ES provided discussion. BDA, SA and OC
587 supervised the project. MAT wrote the manuscript with final approval of all authors.

588 REFERENCES

- 589 Alamo, L., Ware, J. S., Pinto, A., Gillilan, R. E., Seidman, J. G., Seidman, C. E., & Padron, R. (2017).
590 Effects of myosin variants on interacting-heads motif explain distinct hypertrophic and
591 dilated cardiomyopathy phenotypes. *Elife*, *6*, e24634.
- 592 Andrews, R. M., Kubacka, I., Chinnery, P. F., Lightowlers, R. N., Turnbull, D. M., & Howell, N.
593 (1999). Reanalysis and revision of the Cambridge reference sequence for human
594 mitochondrial DNA. *Nature Genetics*, *23*(2), 147.
- 595 Andrews, S. (2010). *FastQC: a quality control tool for high throughput sequence data*. Babraham
596 Bioinformatics, Babraham Institute, Cambridge, United Kingdom.
- 597 Anna, G., Bärbel, K., Andreas, B., & Hendrik, M. (2020). RBM20 mutations in left ventricular
598 non-compaction cardiomyopathy. *Pediatric Investigation*, *04*(01), 61–63.
599 <https://doi.org/10.1002/ped4.12184>
- 600 Arbustini, E., Narula, N., Tavazzi, L., Serio, A., Grasso, M., Favalli, V., Bellazzi, R., Tajik, J. A.,
601 Bonow, R. O., Fuster, V., & Narula, J. (2014). The MOGE(S) Classification of
602 Cardiomyopathy for Clinicians. *Journal of the American College of Cardiology*, *64*(3), 304–
603 318. <https://doi.org/https://doi.org/10.1016/j.jacc.2014.05.027>
- 604 Bagnall, R. D., Singer, E. S., Wacker, J., Nowak, N., Ingles, J., King, I., Macciocca, I., Crowe, J.,
605 Ronan, A., Weintraub, R. G., & Semsarian, C. (2022). Genetic Basis of Childhood
606 Cardiomyopathy. *Circulation: Genomic and Precision Medicine*, *15*(6), e003686.
607 <https://doi.org/10.1161/CIRCGEN.121.003686>
- 608 Bottillo, I., D'Angelantonio, D., Caputo, V., Paiardini, A., Lipari, M., De Bernardo, C., Giannarelli,
609 D., Pizzuti, A., Majore, S., Castori, M., Zachara, E., Re, F., & Grammatico, P. (2016).
610 Molecular analysis of sarcomeric and non-sarcomeric genes in patients with hypertrophic
611 cardiomyopathy. *Gene*, *577*(2), 227–235.
612 <https://doi.org/https://doi.org/10.1016/j.gene.2015.11.048>
- 613 Chinnery, P. F., & Gomez-Duran, A. (2018). Oldies but Goldies mtDNA Population Variants and
614 Neurodegenerative Diseases . In *Frontiers in Neuroscience* (Vol. 12, p. 682).
615 <https://www.frontiersin.org/article/10.3389/fnins.2018.00682>
- 616 Dorn, G. W. (2015). Mitochondrial dynamism and heart disease: changing shape and shaping
617 change. *EMBO Molecular Medicine*, *7*(7), 865-877–877.
618 <https://doi.org/https://doi.org/10.15252/emmm.201404575>
- 619 *dplyr: A Grammar of Data Manipulation* (1.0.7). (2021). [https://cran.r-](https://cran.r-project.org/package=dplyr)
620 [project.org/package=dplyr](https://cran.r-project.org/package=dplyr)
- 621 Elliott, P., Andersson, B., Arbustini, E., Bilinska, Z., Cecchi, F., Charron, P., Dubourg, O., Kühl, U.,
622 Maisch, B., McKenna, W. J., Monserrat, L., Pankuweit, S., Rapezzi, C., Seferovic, P., Tavazzi,
623 L., & Keren, A. (2007). Classification of the cardiomyopathies: a position statement from
624 the european society of cardiology working group on myocardial and pericardial diseases.
625 *European Heart Journal*, *29*(2), 270–276. <https://doi.org/10.1093/eurheartj/ehm342>
- 626 Elson, J. L., Smith, P. M., Greaves, L. C., Lightowlers, R. N., Chrzanowska-Lightowlers, Z. M. A.,
627 Taylor, R. W., & Vila-Sanjurjo, A. (2015). The presence of highly disruptive 16S rRNA

- 628 mutations in clinical samples indicates a wider role for mutations of the mitochondrial
629 ribosome in human disease. *Mitochondrion*, 25, 17–27.
630 <https://doi.org/https://doi.org/10.1016/j.mito.2015.08.004>
- 631 Fernandez-Vizarra, E., & Zeviani, M. (2021). Mitochondrial disorders of the OXPHOS system.
632 *FEBS Letters*, 595(8), 1062–1106. [https://doi.org/https://doi.org/10.1002/1873-](https://doi.org/https://doi.org/10.1002/1873-3468.13995)
633 3468.13995
- 634 Fiorillo, C., Astrea, G., Savarese, M., Cassandrini, D., Brisca, G., Trucco, F., Pedemonte, M.,
635 Trovato, R., Ruggiero, L., Vercelli, L., D’Amico, A., Tasca, G., Pane, M., Fanin, M., Bello, L.,
636 Broda, P., Musumeci, O., Rodolico, C., Messina, S., ... Bruno, C. (2016). MYH7-related
637 myopathies: Clinical, histopathological and imaging findings in a cohort of Italian patients.
638 *Orphanet Journal of Rare Diseases*. <https://doi.org/10.1186/s13023-016-0476-1>
- 639 Gaertner, A., Bloebaum, J., Brodehl, A., Klauke, B., Sielemann, K., Kassner, A., Fox, H., Morshuis,
640 M., Tiesmeier, J., & Schulz, U. (2021). The combined human genotype of truncating TTN
641 and RBM20 mutations is associated with severe and early onset of dilated
642 cardiomyopathy. *Genes*, 12(6), 883.
- 643 Geske, J. B., Ommen, S. R., & Gersh, B. J. (2018). Hypertrophic Cardiomyopathy: Clinical Update.
644 *JACC: Heart Failure*, 6(5), 364–375.
645 <https://doi.org/https://doi.org/10.1016/j.jchf.2018.02.010>
- 646 Guo, H., Liu, L., Nishiga, M., Cong, L., & Wu, J. C. (2021). Deciphering pathogenicity of variants of
647 uncertain significance with CRISPR-edited iPSCs. *Trends in Genetics*, 37(12), 1109–1123.
648 <https://doi.org/10.1016/j.tig.2021.08.009>
- 649 Guo, W., Schafer, S., Greaser, M. L., Radke, M. H., Liss, M., Govindarajan, T., Maatz, H., Schulz,
650 H., Li, S., Parrish, A. M., Dauksaite, V., Vakeel, P., Klaassen, S., Gerull, B., Thierfelder, L.,
651 Regitz-Zagrosek, V., Hacker, T. A., Saupe, K. W., Dec, G. W., ... Gotthardt, M. (2012).
652 RBM20, a gene for hereditary cardiomyopathy, regulates titin splicing. *Nature Medicine*,
653 18(5), 766–773. <https://doi.org/10.1038/nm.2693>
- 654 Gutell, R. R., Lee, J. C., & Cannone, J. J. (2002). The accuracy of ribosomal RNA comparative
655 structure models. *Current Opinion in Structural Biology*, 12(3), 301–310.
656 [https://doi.org/https://doi.org/10.1016/S0959-440X\(02\)00339-1](https://doi.org/https://doi.org/10.1016/S0959-440X(02)00339-1)
- 657 Herman, D. S., Lam, L., Taylor, M. R. G., Wang, L., Teekakirikul, P., Christodoulou, D., Conner, L.,
658 DePalma, S. R., McDonough, B., Sparks, E., Teodorescu, D. L., Cirino, A. L., Banner, N. R.,
659 Pennell, D. J., Graw, S., Merlo, M., Di Lenarda, A., Sinagra, G., Bos, J. M., ... Seidman, C. E.
660 (2012). Truncations of Titin Causing Dilated Cardiomyopathy. *New England Journal of*
661 *Medicine*, 366(7), 619–628. <https://doi.org/10.1056/NEJMoa1110186>
- 662 Hershberger, R. E., Hedges, D. J., & Morales, A. (2013). Dilated cardiomyopathy: the complexity
663 of a diverse genetic architecture. *Nature Reviews Cardiology*, 10(9), 531–547.
664 <https://doi.org/10.1038/nrcardio.2013.105>
- 665 Hershberger, R. E., & Jordan, E. (2022). Dilated cardiomyopathy overview.
666 *Genereviews*[®][Internet].
- 667 Hershberger, R. E., Morales, A., & Cowan, J. (2017). Is left ventricular noncompaction a trait,
668 phenotype, or disease? The evidence points to phenotype. In *Circulation: Cardiovascular*
669 *Genetics* (Vol. 10, Issue 6, p. e001968). Am Heart Assoc.
- 670 Huigsloot, M., Nijtmans, L. G., Szklarczyk, R., Baars, M. J. H., van den Brand, M. A. M.,
671 HendriksFranssen, M. G. M., van den Heuvel, L. P., Smeitink, J. A. M., Huynen, M. A., &

- 672 Rodenburg, R. J. T. (2011). A Mutation in C2orf64 Causes Impaired Cytochrome c Oxidase
673 Assembly and Mitochondrial Cardiomyopathy. *The American Journal of Human Genetics*,
674 *88*(4), 488–493. <https://doi.org/https://doi.org/10.1016/j.ajhg.2011.03.002>
- 675 laizzo, P. A. (2015). *Handbook of cardiac anatomy, physiology, and devices* (3d edition).
676 Springer.
- 677 Jacoby, D., & McKenna, W. J. (2011). Genetics of inherited cardiomyopathy. *European Heart*
678 *Journal*, *33*(3), 296–304. <https://doi.org/10.1093/eurheartj/ehr260>
- 679 Jenni, R., Oechslin, E., Schneider, J., Jost, C. A., & Kaufmann, P. A. (2001). Echocardiographic and
680 pathoanatomical characteristics of isolated left ventricular non-compaction: a step
681 towards classification as a distinct cardiomyopathy. *Heart*, *86*(6), 666.
682 <https://doi.org/10.1136/heart.86.6.666>
- 683 Jhang, W. K., Choi, J. H., Lee, B. H., Kim, G. H., & Yoo, H. W. (2016). Cardiac Manifestations and
684 Associations with Gene Mutations in Patients Diagnosed with RASopathies. *Pediatric*
685 *Cardiology*. <https://doi.org/10.1007/s00246-016-1468-6>
- 686 Kimura, H., Zhou, J., Kawamura, M., Itoh, H., Mizusawa, Y., Ding, W.-G., Wu, J., Ohno, S.,
687 Makiyama, T., Miyamoto, A., Naiki, N., Wang, Q., Xie, Y., Suzuki, T., Tateno, S., Nakamura,
688 Y., Zang, W.-J., Ito, M., Matsuura, H., & Horie, M. (2012). Phenotype Variability in Patients
689 Carrying KCNJ2 Mutations. *Circulation: Cardiovascular Genetics*, *5*(3), 344–353.
690 <https://doi.org/10.1161/CIRCGENETICS.111.962316>
- 691 Kobayashi, M., Nakamura, S., Murakami, C., Maeda, K., Irie, W., Hayashi, M., Sasaki, C.,
692 Nakamaru, N., Furukawa, M., & Kurihara, K. (2011). Mutational analysis of the
693 mitochondrial DNA detected in sudden cardiac death caused by cardiomyopathy. *Kitasato*
694 *Med J*, *41*, 127–135.
- 695 Kolokotronis, K., Kühnisch, J., Klopocki, E., Dartsch, J., Rost, S., Huculak, C., Mearini, G., Störk, S.,
696 Carrier, L., & Klaassen, S. (2019). Biallelic mutation in MYH7 and MYBPC3 leads to severe
697 cardiomyopathy with left ventricular noncompaction phenotype. *Human Mutation*, *40*(8),
698 1101–1114.
- 699 Koopman, W. J. H., Beyrath, J., Fung, C., Koene, S., Rodenburg, R. J., Willems, P. H. G. M., &
700 Smeitink, J. A. M. (2016). Mitochondrial disorders in children: toward development of
701 small-molecule treatment strategies. *EMBO Molecular Medicine*, *8*(4), 311-327–327.
702 <https://doi.org/https://doi.org/10.15252/emmm.201506131>
- 703 Kuru, N., Dereli, O., Akkoyun, E., Bircan, A., Tastan, O., & Adebali, O. (2022). PHACT: Phylogeny-
704 aware computing of tolerance for missense mutations. *Molecular Biology and Evolution*,
705 *39*(6), msac114.
- 706 Lee, T. M., Hsu, D. T., Kantor, P., Towbin, J. A., Ware, S. M., Colan, S. D., Chung, W. K., Jefferies,
707 J. L., Rossano, J. W., Castleberry, C. D., Addonizio, L. J., Lal, A. K., Lamour, J. M., Miller, E.
708 M., Thrush, P. T., Czachor, J. D., Razoky, H., Hill, A., & Lipshultz, S. E. (2017). Pediatric
709 Cardiomyopathies. *Circulation Research*, *121*(7), 855–873.
710 <https://doi.org/10.1161/CIRCRESAHA.116.309386>
- 711 Lennermann, D., Backs, J., & van den Hoogenhof, M. M. G. (2020). New Insights in RBM20
712 Cardiomyopathy. *Current Heart Failure Reports*, *17*(5), 234–246.
713 <https://doi.org/10.1007/s11897-020-00475-x>
- 714 Li, B., Ahluwalia, M., Narula, N., Moreira, A. L., Swistel, D. G., Massera, D., & Sherrid, M. V.
715 (2020). Cardiac AA amyloidosis in a patient with obstructive hypertrophic cardiomyopathy.

- 716 *Cardiovascular Pathology*, 48, 107218.
717 <https://doi.org/https://doi.org/10.1016/j.carpath.2020.107218>
- 718 Li, D., Sun, Y., Zhuang, Q., Song, Y., Wu, B., Jia, Z., Pan, H., Zhou, H., Hu, S., Zhang, B., Qiu, Y.,
719 Dai, Y., Chen, S., Xu, X., Zhu, X., Lin, A., Huang, W., Liu, Z., & Yan, Q. (2019). Mitochondrial
720 dysfunction caused by m.2336T>C mutation with hypertrophic cardiomyopathy in cybrid
721 cell lines. *Mitochondrion*, 46, 313–320.
722 <https://doi.org/https://doi.org/10.1016/j.mito.2018.08.005>
- 723 Li, H. (2013). Aligning sequence reads, clone sequences and assembly contigs with BWA-MEM.
724 *ArXiv Preprint ArXiv:1303.3997*.
- 725 Li, S., Pan, H., Tan, C., Sun, Y., Song, Y., Zhang, X., Yang, W., Wang, X., Li, D., Dai, Y., Ma, Q., Xu,
726 C., Zhu, X., Kang, L., Fu, Y., Xu, X., Shu, J., Zhou, N., Han, F., ... Yan, Q. (2018). Mitochondrial
727 Dysfunctions Contribute to Hypertrophic Cardiomyopathy in Patient iPSC-Derived
728 Cardiomyocytes with MT-RNR2 Mutation. *Stem Cell Reports*, 10(3), 808–821.
729 <https://doi.org/https://doi.org/10.1016/j.stemcr.2018.01.013>
- 730 Libby, P., Bonow, R. O., Mann, D. L., Tomaselli, G. F., Bhatt, D. L., Solomon, S. D., & Braunwald,
731 E. (2021). *Braunwald's Heart Disease, 2 Vol Set: A Textbook of Cardiovascular Medicine*.
732 Elsevier. <https://books.google.co.uk/books?id=U1VrzgEACAAJ>
- 733 Lin, Y., Huang, J., Zhu, Z., Zhang, Z., Xian, J., Yang, Z., Qin, T., Chen, L., Huang, J., Huang, Y., Wu,
734 Q., Hu, Z., Lin, X., & Xu, G. (2021). Overlap phenotypes of the left ventricular
735 noncompaction and hypertrophic cardiomyopathy with complex arrhythmias and heart
736 failure induced by the novel truncated DSC2 mutation. *Orphanet Journal of Rare Diseases*,
737 16(1), 496. <https://doi.org/10.1186/s13023-021-02112-9>
- 738 Lipshultz, S. E., Law, Y. M., Asante-Korang, A., Austin, E. D., Dipchand, A. I., Everitt, M. D., Hsu,
739 D. T., Lin, K. Y., Price, J. F., Wilkinson, J. D., Colan, S. D., & null, null. (2019).
740 Cardiomyopathy in Children: Classification and Diagnosis: A Scientific Statement From the
741 American Heart Association. *Circulation*, 140(1), e9–e68.
742 <https://doi.org/10.1161/CIR.0000000000000682>
- 743 Liu, S., Bai, Y., Huang, J., Zhao, H., Zhang, X., Hu, S., & Wei, Y. (2013). Do mitochondria
744 contribute to left ventricular non-compaction cardiomyopathy? New findings from
745 myocardium of patients with left ventricular non-compaction cardiomyopathy. *Molecular*
746 *Genetics and Metabolism*, 109(1), 100–106.
747 <https://doi.org/https://doi.org/10.1016/j.ymgme.2013.02.004>
- 748 Lott, M. T., Leipzig, J. N., Derbeneva, O., Xie, H. M., Chalkia, D., Sarmady, M., Procaccio, V., &
749 Wallace, D. C. (2013). mtDNA Variation and Analysis Using Mitomap and Mitomaster.
750 *Current Protocols in Bioinformatics*, 44(1), 1.23.1-1.23.26.
751 <https://doi.org/10.1002/0471250953.bi0123s44>
- 752 Maron, B. A., T. J., Gaetano, T., Charles, A., Domenico, C., Donna, A., J., M. A., E., S. C., & B., Y. J.
753 (2006). Contemporary Definitions and Classification of the Cardiomyopathies. *Circulation*,
754 113(14), 1807–1816. <https://doi.org/10.1161/CIRCULATIONAHA.106.174287>
- 755 Maron, B. J. (2018). Clinical course and management of hypertrophic cardiomyopathy. *New*
756 *England Journal of Medicine*, 379(7), 655–668.
- 757 McKenna, A., Hanna, M., Banks, E., Sivachenko, A., Cibulskis, K., Kernytsky, A., Garimella, K.,
758 Altshuler, D., Gabriel, S., Daly, M., & DePristo, M. A. (2010). The Genome Analysis Toolkit:

- 759 A MapReduce framework for analyzing next-generation DNA sequencing data. *Genome*
760 *Research*, 20(9), 1297–1303. <http://genome.cshlp.org/content/20/9/1297.abstract>
- 761 McKenna, J. W., J., M. B., & Gaetano, T. (2017). Classification, Epidemiology, and Global Burden
762 of Cardiomyopathies. *Circulation Research*, 121(7), 722–730.
763 <https://doi.org/10.1161/CIRCRESAHA.117.309711>
- 764 McLaren, W., Gil, L., Hunt, S. E., Riat, H. S., Ritchie, G. R. S., Thormann, A., Flicek, P., &
765 Cunningham, F. (2016). The Ensembl Variant Effect Predictor. *Genome Biology*, 17(1), 122.
766 <https://doi.org/10.1186/s13059-016-0974-4>
- 767 Miller, E. M., Hinton, R. B., Czosek, R., Lorts, A., Parrott, A., Shikany, A. R., Ittenbach, R. F., &
768 Ware, S. M. (2017). Genetic testing in pediatric left ventricular noncompaction. *Circulation:*
769 *Cardiovascular Genetics*, 10(6), e001735.
- 770 Moric-Janiszewska, E., & Markiewicz-Łoskot, G. (2008). Genetic Heterogeneity of Left-
771 ventricular Noncompaction Cardiomyopathy. *Clinical Cardiology*, 31(5), 201–204.
772 <https://doi.org/https://doi.org/10.1002/clc.20202>
- 773 Mukherjee, S., & Ghosh, A. (2020). Molecular mechanism of mitochondrial respiratory chain
774 assembly and its relation to mitochondrial diseases. *Mitochondrion*, 53, 1–20.
775 <https://doi.org/https://doi.org/10.1016/j.mito.2020.04.002>
- 776 Nguyen, M. B., Mital, S., Mertens, L., Jeewa, A., Friedberg, M. K., Aguet, J., Adler, A., Lam, C. Z.,
777 Dragulescu, A., Rakowski, H., & Villemain, O. (2022). Pediatric Hypertrophic
778 Cardiomyopathy: Exploring the Genotype-Phenotype Association. *Journal of the American*
779 *Heart Association*, 11(5), e024220. <https://doi.org/10.1161/JAHA.121.024220>
- 780 Nissanka, N., & Moraes, C. T. (2020). Mitochondrial DNA heteroplasmy in disease and targeted
781 nuclease-based therapeutic approaches. *EMBO Reports*, 21(3), e49612.
782 <https://doi.org/https://doi.org/10.15252/embr.201949612>
- 783 Norton, N., Li, D., Rampersaud, E., Morales, A., Martin, E. R., Zuchner, S., Guo, S., Gonzalez, M.,
784 Hedges, D. J., Robertson, P. D., Krumm, N., Nickerson, D. A., & Hershberger, R. E. (2013).
785 Exome Sequencing and Genome-Wide Linkage Analysis in 17 Families Illustrate the
786 Complex Contribution of TTN Truncating Variants to Dilated Cardiomyopathy. *Circulation:*
787 *Cardiovascular Genetics*, 6(2), 144–153.
788 <https://doi.org/10.1161/CIRCGENETICS.111.000062>
- 789 null, null, Ommen, S. R., Mital, S., Burke, M. A., Day, S. M., Deswal, A., Elliott, P., Evanovich, L. L.,
790 Hung, J., Joglar, J. A., Kantor, P., Kimmelstiel, C., Kittleson, M., Link, M. S., Maron, M. S.,
791 Martinez, M. W., Miyake, C. Y., Schaff, H. V., Semsarian, C., & Sorajja, P. (2020). 2020
792 AHA/ACC Guideline for the Diagnosis and Treatment of Patients With Hypertrophic
793 Cardiomyopathy. *Circulation*, 142(25), e558–e631.
794 <https://doi.org/10.1161/CIR.0000000000000937>
- 795 Ortega, A., Tarazón, E., Roselló-Lletí, E., Gil-Cayuela, C., Lago, F., González-Juanatey, J.-R., Cinca,
796 J., Jorge, E., Martínez-Dolz, L., Portolés, M., & Rivera, M. (2016). Patients with Dilated
797 Cardiomyopathy and Sustained Monomorphic Ventricular Tachycardia Show Up-
798 Regulation of KCNN3 and KCNJ2 Genes and CACNG8-Linked Left Ventricular Dysfunction.
799 *PLOS ONE*, 10(12), e0145518-. <https://doi.org/10.1371/journal.pone.0145518>
- 800 Parker, L. E., Kramer, R. J., Kaplan, S., & Landstrom, A. P. (2023). One gene, two modes of
801 inheritance, four diseases: A systematic review of the cardiac manifestation of pathogenic

- 802 variants in JPH2-encoded junctophilin-2. *Trends in Cardiovascular Medicine*, 33(1), 1–10.
803 <https://doi.org/10.1016/j.tcm.2021.11.006>
- 804 Parvatiyar, M. S., Landstrom, A. P., Figueiredo-Freitas, C., Potter, J. D., Ackerman, M. J., & Pinto,
805 J. R. (2012). A mutation in TNNC1-encoded cardiac troponin C, TNNC1-A31S, predisposes
806 to hypertrophic cardiomyopathy and ventricular fibrillation. *The Journal of Biological*
807 *Chemistry*, 287(38), 31845–31855. <https://doi.org/10.1074/jbc.M112.377713>
- 808 Pinto, J. R., Siegfried, J. D., Parvatiyar, M. S., Li, D., Norton, N., Jones, M. A., Liang, J., Potter, J.
809 D., & Hershberger, R. E. (2011). Functional characterization of TNNC1 rare variants
810 identified in dilated cardiomyopathy. *The Journal of Biological Chemistry*, 286(39), 34404–
811 34412. <https://doi.org/10.1074/jbc.M111.267211>
- 812 Ploski, R., Rydzanicz, M., Ksiazczyk, T. M., Franaszczyk, M., Pollak, A., Kosinska, J., Michalak, E.,
813 Stawinski, P., Ziolkowska, L., Bilinska, Z. T., & Werner, B. (2016). Evidence for troponin C
814 (TNNC1) as a gene for autosomal recessive restrictive cardiomyopathy with fatal outcome
815 in infancy. *American Journal of Medical Genetics Part A*, 170(12), 3241–3248.
816 <https://doi.org/10.1002/ajmg.a.37860>
- 817 Preste, R., Vitale, O., Clima, R., Gasparre, G., & Attimonelli, M. (2019). HmtVar: a new resource
818 for human mitochondrial variations and pathogenicity data. *Nucleic Acids Research*,
819 47(D1), D1202–D1210.
- 820 Rath, S., Sharma, R., Gupta, R., Ast, T., Chan, C., Durham, T. J., Goodman, R. P., Grabarek, Z.,
821 Haas, M. E., Hung, W. H. W., Joshi, P. R., Jourdain, A. A., Kim, S. H., Kotrys, A. V, Lam, S. S.,
822 McCoy, J. G., Meisel, J. D., Miranda, M., Panda, A., ... Mootha, V. K. (2021). MitoCarta3.0:
823 an updated mitochondrial proteome now with sub-organelle localization and pathway
824 annotations. *Nucleic Acids Research*, 49(D1), D1541–D1547.
825 <https://doi.org/10.1093/nar/gkaa1011>
- 826 Rebs, S. (2021). *Analysis of splice-defect associated cardiac diseases using a patient-specific*
827 *iPSC-cardiomyocyte system*. [https://ediss.uni-goettingen.de/handle/21.11130/00-1735-](https://ediss.uni-goettingen.de/handle/21.11130/00-1735-0000-0005-154B-0)
828 [0000-0005-154B-0](https://ediss.uni-goettingen.de/handle/21.11130/00-1735-0000-0005-154B-0)
- 829 Richards, S., Aziz, N., Bale, S., Bick, D., Das, S., Gastier-Foster, J., Grody, W. W., Hegde, M., Lyon,
830 E., Spector, E., Voelkerding, K., Rehm, H. L., & Committee, A. L. Q. A. (2015). Standards and
831 guidelines for the interpretation of sequence variants: a joint consensus recommendation
832 of the American College of Medical Genetics and Genomics and the Association for
833 Molecular Pathology. *Genetics in Medicine*: Official Journal of the American College of
834 *Medical Genetics*, 17(5), 405–424. <https://doi.org/10.1038/gim.2015.30>
- 835 Riemersma, M., Hazebroek, M. R., Helderma-van den Enden, A. T. J. M., Salomons, G. S.,
836 Ferdinandusse, S., Brouwers, M. C. G. J., van der Ploeg, L., Heymans, S., Glatz, J. F. C., van
837 den Wijngaard, A., Krapels, I. P. C., Bierau, J., & Brunner, H. G. (2017). Propionic acidemia
838 as a cause of adult-onset dilated cardiomyopathy. *European Journal of Human Genetics*,
839 25(11), 1195–1201. <https://doi.org/10.1038/ejhg.2017.127>
- 840 Ripoll-Vera, T., Gámez, J. M., Govea, N., Gómez, Y., Núñez, J., Socías, L., Escandell, Á., & Rosell, J.
841 (2016). Clinical and Prognostic Profiles of Cardiomyopathies Caused by Mutations in the
842 Troponin T Gene. *Revista Espanola de Cardiologia (English Ed.)*, 69(2), 149–158.
843 <https://doi.org/10.1016/j.rec.2015.06.025>
- 844 Roberts, A. M., Ware, J. S., Herman, D. S., Schafer, S., Baksi, J., Bick, A. G., Buchan, R. J., Walsh,
845 R., John, S., Wilkinson, S., Mazarrotto, F., Felkin, L. E., Gong, S., L. MacArthur, J. A.,

- 846 Cunningham, F., Flannick, J., Gabriel, S. B., Altshuler, D. M., Macdonald, P. S., ... Cook, S. A.
847 (2015). Integrated allelic, transcriptional, and phenomic dissection of the cardiac effects of
848 titin truncations in health and disease. *Science Translational Medicine*, 7(270), 270ra6-
849 270ra6. <https://doi.org/10.1126/scitranslmed.3010134>
- 850 Sabater-Molina, M., Navarro, M., García-Molina Sáez, E., Garrido, I., Pascual-Figal, D., González
851 Carrillo, J., & Gimeno Blanes, J. R. (2016). Mutation in JPH2 cause dilated cardiomyopathy.
852 *Clinical Genetics*, 90(5), 468–469. <https://doi.org/https://doi.org/10.1111/cge.12825>
- 853 Sanganalath, S. K., & Bolli, R. (2013). Cell Therapy for Heart Failure. *Circulation Research*,
854 113(6), 810–834. <https://doi.org/10.1161/CIRCRESAHA.113.300219>
- 855 Santorelli, F. M., Tanji, K., Manta, P., Casali, C., Krishna, S., Hays, A. P., Mancini, D. M., DiMauro,
856 S., & Hirano, M. (1999). Maternally Inherited Cardiomyopathy: An Atypical Presentation of
857 the mtDNA 12S rRNA Gene A1555G Mutation. *The American Journal of Human Genetics*,
858 64(1), 295–300. <https://doi.org/10.1086/302188>
- 859 Sedaghat-Hamedani, F., Haas, J., Zhu, F., Geier, C., Kayvanpour, E., Liss, M., Lai, A., Frese, K.,
860 Pribe-Wolferts, R., Amr, A., Li, D. T., Samani, O. S., Carstensen, A., Bordalo, D. M., Müller,
861 M., Fischer, C., Shao, J., Wang, J., Nie, M., ... Meder, B. (2017). Clinical genetics and
862 outcome of left ventricular non-compaction cardiomyopathy. *European Heart Journal*,
863 38(46), 3449–3460. <https://doi.org/10.1093/eurheartj/ehx545>
- 864 Sedaghat-Hamedani, F., Haas, J., Zhu, F., Kayvanpour, E., Geier, C., Lai, A., Frese, K., Amr, A.,
865 Liss, M., Ehlermann, P. H., Dieterich, C., Gotthardt, M., Katus, H. A., & Meder, B. (2017).
866 P1338Mutations in RBM20 and titin cause left ventricular non-compaction
867 cardiomyopathy. *European Heart Journal*, 38(suppl_1), ehx502.P1338.
868 <https://doi.org/10.1093/eurheartj/ehx502.P1338>
- 869 Shen, L., Attimonelli, M., Bai, R., Lott, M. T., Wallace, D. C., Falk, M. J., & Gai, X. (2018). MSeqDR
870 mvTool: A mitochondrial DNA Web and API resource for comprehensive variant
871 annotation, universal nomenclature collation, and reference genome conversion. *Human*
872 *Mutation*, 39(6), 806–810. <https://doi.org/10.1002/humu.23422>
- 873 Smeitink, J. A. M., Elpeleg, O., Antonicka, H., Diepstra, H., Saada, A., Smits, P., Sasarman, F.,
874 Vriend, G., Jacob-Hirsch, J., & Shaag, A. (2006). Distinct clinical phenotypes associated with
875 a mutation in the mitochondrial translation elongation factor EFTs. *The American Journal*
876 *of Human Genetics*, 79(5), 869–877.
- 877 Smith, P. M., Elson, J. L., Greaves, L. C., Wortmann, S. B., Rodenburg, R. J. T., Lightowlers, R. N.,
878 Chrzanowska-Lightowlers, Z. M. A., Taylor, R. W., & Vila-Sanjurjo, A. (2013). The role of the
879 mitochondrial ribosome in human disease: searching for mutations in 12S mitochondrial
880 rRNA with high disruptive potential. *Human Molecular Genetics*, 23(4), 949–967.
881 <https://doi.org/10.1093/hmg/ddt490>
- 882 *stephenturner/solarplot: Mitochondrial Solar Plot*. (n.d.). Retrieved 24 October 2023, from
883 <https://github.com/stephenturner/solarplot>
- 884 Sun, Q., Guo, J., Hao, C., Guo, R., Hu, X., Chen, Y., Yang, W., Li, W., & Feng, Y. (2020).
885 Whole-exome sequencing reveals two de novo variants in the RBM20 gene in two Chinese
886 patients with left ventricular non-compaction cardiomyopathy. *Pediatric Investigation*,
887 4(1), 11–16.
- 888 Tahrir, F. G., Knezevic, T., Gupta, M. K., Gordon, J., Cheung, J. Y., Feldman, A. M., & Khalili, K.
889 (2017). Evidence for the Role of BAG3 in Mitochondrial Quality Control in Cardiomyocytes.

- 890 *Journal of Cellular Physiology*, 232(4), 797–805.
891 <https://doi.org/https://doi.org/10.1002/jcp.25476>
- 892 Takeda, A. (2020). Mitochondrial cardiomyopathy. *J Pediatr Cardiol Card Surg*, 4, 53–62.
- 893 Tang, S., Batra, A., Zhang, Y., Ebenroth, E. S., & Huang, T. (2010). Left ventricular
894 noncompaction is associated with mutations in the mitochondrial genome. *Mitochondrion*,
895 10(4), 350–357. <https://doi.org/https://doi.org/10.1016/j.mito.2010.02.003>
- 896 Tashiro, R. (2018). *Mitochondrial Cardiomyopathy* (N. Onoue, Ed.; p. Ch. 1). IntechOpen.
897 <https://doi.org/10.5772/intechopen.77105>
- 898 Tobita, T., Nomura, S., Fujita, T., Morita, H., Asano, Y., Onoue, K., Ito, M., Imai, Y., Suzuki, A., Ko,
899 T., Satoh, M., Fujita, K., Naito, A. T., Furutani, Y., Toko, H., Harada, M., Amiya, E., Hatano,
900 M., Takimoto, E., ... Komuro, I. (2018). Genetic basis of cardiomyopathy and the genotypes
901 involved in prognosis and left ventricular reverse remodeling. *Scientific Reports*, 8(1), 1998.
902 <https://doi.org/10.1038/s41598-018-20114-9>
- 903 Toepfer, C. N., Garfinkel, A. C., Venturini, G., Wakimoto, H., Repetti, G., Alamo, L., Sharma, A.,
904 Agarwal, R., Ewoldt, J. F., & Cloonan, P. (2020). Myosin sequestration regulates sarcomere
905 function, cardiomyocyte energetics, and metabolism, informing the pathogenesis of
906 hypertrophic cardiomyopathy. *Circulation*, 141(10), 828–842.
- 907 van Waning, J. I., Caliskan, K., Hoedemaekers, Y. M., van Spaendonck-Zwarts, K. Y., Baas, A. F.,
908 Boekholdt, S. M., van Melle, J. P., Teske, A. J., Asselbergs, F. W., & Backx, A. P. C. M. (2018).
909 Genetics, clinical features, and long-term outcome of noncompaction cardiomyopathy.
910 *Journal of the American College of Cardiology*, 71(7), 711–722.
- 911 Velicki, L., Jakovljevic, D. G., Preveden, A., Golubovic, M., Bjelobrk, M., Ilic, A., Stojsic, S.,
912 Barlocco, F., Tafelmeier, M., Okwose, N., Tesic, M., Brennan, P., Popovic, D., Ristic, A.,
913 MacGowan, G. A., Filipovic, N., Maier, L. S., & Olivotto, I. (2020). Genetic determinants of
914 clinical phenotype in hypertrophic cardiomyopathy. *BMC Cardiovascular Disorders*, 20(1),
915 516. <https://doi.org/10.1186/s12872-020-01807-4>
- 916 Vercellino, I., & Sazanov, L. A. (2022). The assembly, regulation and function of the
917 mitochondrial respiratory chain. *Nature Reviews Molecular Cell Biology*, 23(2), 141–161.
918 <https://doi.org/10.1038/s41580-021-00415-0>
- 919 Vila-Sanjurjo, A., Smith, P. M., & Elson, J. L. (2021). Heterologous Inferential Analysis (HIA) and
920 Other Emerging Concepts: In Understanding Mitochondrial Variation In Pathogenesis:
921 There is no More Low-Hanging Fruit. In V. Weissig & M. Edeas (Eds.), *Mitochondrial*
922 *Medicine: Volume 3: Manipulating Mitochondria and Disease- Specific Approaches* (pp.
923 203–245). Springer US. https://doi.org/10.1007/978-1-0716-1270-5_14
- 924 von Elm, E., Altman, D. G., Egger, M., Pocock, S. J., Gøtzsche, P. C., & Vandembroucke, J. P.
925 (2007). The Strengthening the Reporting of Observational Studies in Epidemiology
926 (STROBE) statement: guidelines for reporting observational studies. *The Lancet*, 370(9596),
927 1453–1457. [https://doi.org/10.1016/S0140-6736\(07\)61602-X](https://doi.org/10.1016/S0140-6736(07)61602-X)
- 928 Wallace, D. C. (2015). Mitochondrial DNA Variation in Human Radiation and Disease. *Cell*,
929 163(1), 33–38. <https://doi.org/10.1016/j.cell.2015.08.067>
- 930 Wallace, D. C. (2018). Mitochondrial genetic medicine. *Nature Genetics*, 50(12), 1642–1649.
931 <https://doi.org/10.1038/s41588-018-0264-z>
- 932 Wang, J., Tomar, D., Martin, T. G., Dubey, S., Dubey, P. K., Song, J., Landesberg, G., McCormick,
933 M. G., Myers, V. D., Merali, S., Merali, C., Lemster, B., McTiernan, C. F., Khalili, K., Madesh,

934 M., Cheung, J. Y., Kirk, J. A., & Feldman, A. M. (2023). Bag3 Regulates Mitochondrial
935 Function and the Inflammasome Through Canonical and Noncanonical Pathways in the
936 Heart. *JACC: Basic to Translational Science*, 8(7), 820–839.
937 <https://doi.org/https://doi.org/10.1016/j.jacbts.2022.12.013>

938 Ware, S. M., Bhatnagar, S., Dexheimer, P. J., Wilkinson, J. D., Sridhar, A., Fan, X., Shen, Y., Tariq,
939 M., Schubert, J. A., Colan, S. D., Shi, L., Canter, C. E., Hsu, D. T., Bansal, N., Webber, S. A.,
940 Everitt, M. D., Kantor, P. F., Rossano, J. W., Pahl, E., ... Lipshultz, S. E. (2022). The genetic
941 architecture of pediatric cardiomyopathy. *The American Journal of Human Genetics*,
942 109(2), 282–298. <https://doi.org/https://doi.org/10.1016/j.ajhg.2021.12.006>

943 Weissensteiner, H., Pacher, D., Kloss-Brandstätter, A., Forer, L., Specht, G., Bandelt, H.-J.,
944 Kronenberg, F., Salas, A., & Schönherr, S. (2016). HaploGrep 2: mitochondrial haplogroup
945 classification in the era of high-throughput sequencing. *Nucleic Acids Research*, 44(W1),
946 W58–W63. <https://doi.org/10.1093/nar/gkw233>

947 Wickham, H. (2016). *ggplot2: elegant graphics for data analysis*. springer.

948 Williams, T., Machann, W., Kühler, L., Hamm, H., Müller-Höcker, J., Zimmer, M., Ertl, G., Ritter,
949 O., Beer, M., & Schönberger, J. (2011). Novel desmoplakin mutation: juvenile biventricular
950 cardiomyopathy with left ventricular non-compaction and acantholytic palmoplantar
951 keratoderma. *Clinical Research in Cardiology*, 100, 1087–1093.

952 Willott, R. H., Gomes, A. V., Chang, A. N., Parvatiyar, M. S., Pinto, J. R., & Potter, J. D. (2010).
953 Mutations in Troponin that cause HCM, DCM AND RCM: What can we learn about thin
954 filament function? *Journal of Molecular and Cellular Cardiology*, 48(5), 882–892.
955 <https://doi.org/10.1016/j.yjmcc.2009.10.031>

956 Yusuf, S., Reddy, S., Ôunpuu, S., & Anand, S. (2001). Global burden of cardiovascular diseases:
957 Part II: variations in cardiovascular disease by specific ethnic groups and geographic
958 regions and prevention strategies. *Circulation*, 104(23), 2855–2864.

959 Zaragoza, M. V., Brandon, M. C., Diegoli, M., Arbustini, E., & Wallace, D. C. (2011). Mitochondrial
960 cardiomyopathies: how to identify candidate pathogenic mutations by mitochondrial DNA
961 sequencing, MITOMASTER and phylogeny. *European Journal of Human Genetics*, 19(2),
962 200–207. <https://doi.org/10.1038/ejhg.2010.169>
963