

LEPROSY RELAPSE AFTER POLYCHEMOTHERAPY: A SYSTEMATIC REVIEW AND META-ANALYSIS

LEPROSY RELAPSE AFTER POLYCHEMOTHERAPY: A META-ANALYSIS

Fabiane Verônica da Silva¹

Gutemberg Santos de Sousa²

Elena Alves Benevides Ferreira³

Pâmela Rodrigues de Souza Silva⁴

Juliana Akie Takahashi⁵

Omar Ariel Espinosa⁶

Eliane Ignotti⁷

Roberta Pinheiro Olmo⁸

Vilanice Alves de Araújo Püschel⁹

Zélia Ferreira Caçador Anastácio¹⁰

Silvana Margarida Benevides Ferreira¹¹

^{1,2,4,6,11}Graduate Program in Nursing at the Federal University of Mato Grosso, Avenida Fernando Correia- Cuiabá, Mato Grosso, Brazil.

³Medical School at the University of Cuiabá, Av. Manoel José de Arruda, 3100 – Jardim Europa, Cuiabá, Mato Grosso, Brazil.

^{5,9}Brazilian Centre for Evidence-based Healthcare; Nursing School at the University of São Paulo, Avenida Doutor Enéas Carvalho de Aguiar, São Paulo, São Paulo, Brazil.

⁷Graduate Program in Health Sciences at the Federal University of Mato Grosso, Avenida Fernando Correia- Cuiabá, Mato Grosso, Brazil.

⁸Graduate Program in Parasite Biology, Oswaldo Cruz Institute, Avenida Brasil, Rio de Janeiro, Rio de Janeiro, Brazil.

¹⁰University of Minho, Rua da Universidade, Braga, Portugal.

These authors contributed equally to this paper.

Corresponding Author- (F.V.S) faby.vero@hotmail.com

ABSTRACT

Objective: To synthesize the best scientific evidence related to estimating the prevalence of leprosy relapse cases after polychemotherapy treatment. **Method:** A

NOTE: This preprint reports new research that has not been certified by peer review and should not be used to guide clinical practice.

systematic review was conducted following the JBI methodology for systematic reviews of prevalence studies, and the reporting stage adhered to PRISMA-P, with registration No.: CRD42020177141. The inclusion criteria were adopted following the PopCoCo mnemonic (Population, Condition, Context). Population: people of both genders and any age, diagnosed with leprosy relapse, and treated with paucibacillary or multibacillary therapeutic regimes. Condition: leprosy relapse after Polychemotherapy (PCT) estimated as a proportion of cases. Context: studies conducted within the scope of health services. Databases used: Medline, LILACS, Embase, CINAHL, Scopus, WoS, CARPHA; Mendeley reference manager. A random-effects meta-analysis model was applied, and heterogeneity was assessed using the Higgins test. **Results:** Out of 41 studies included in the review, involving a total of 93,461 patients with leprosy, 4.09% (n=3,830) were eligible for relapse after polychemotherapy. Of them, 69.71% (n=2,670) were treated both with multibacillary and with paucibacillary regimes (72.36%, n=1,932; and 27.64%, n=738, respectively), and with a bacilloscopy index ≥ 4 . Relapse prevalence was observed in males and in people aged over 30 years old. The meta-analysis estimated the global prevalence of leprosy relapse at 11% (95%CI: 0.09-0.12), with higher prevalence rates in Brazil (31%) and India (13%). **Conclusion:** There is evidence of high global prevalence of leprosy relapse after PCT, with higher estimates in India and Brazil, countries burdened with higher prevalence of the disease.

Keywords: leprosy, relapse, prevalence, polychemotherapy. multidrug therapy

SYNTHESIS

Although leprosy is an ancient disease with a scientifically proven effective treatment, it remains a Public Health problem. This is not only due to the disease high prevalence but also to its potential to cause physical disabilities, leading to emotional and social impacts and, consequently, compromising quality of life. In addition to the new cases of the disease, another concern commonly reported in the literature is leprosy relapse after polychemotherapy, as it has repercussions on therapeutic effectiveness. The relapse causes are usually associated with therapeutic failure due to incomplete treatment, misclassification in the initial treatment, and multidrug resistance. This study provides insights to verify the disease current prevalence based on scientific evidence, which can contribute to expanding the prevention strategies.

INTRODUCTION

Leprosy is a chronic infectious disease of a dermatoneurological nature, caused by *Mycobacterium leprae* or by *M. lepromatosis*. *M. leprae* presents tropism for skin cells and peripheral nerves, potentially causing deformities and physical disabilities that exert impacts on the social, emotional and psychological aspects of the patients' lives, adversely affecting their quality of life^{1,2}.

Since 1981, leprosy has been treated with the Polychemotherapy (PCT) regime recommended by the World Health Organization (WHO), aimed at eliminating active bacillus transmission within communities^{3,4}. Currently, leprosy patients receive a combination of three drugs during treatment, regardless of the clinical form, with only the number of doses differing. Paucibacillary (PB) patients are administered clofazimine, dapsone and rifampicin in a 6-dose regime, whereas Multibacillary (MB) patients undergo a 12-dose regime. Although PCT has been an important tool in leprosy control, therapeutic regime failures, usually caused by diagnostic errors, inadequate treatment periods and irregular medication intake, can compromise leprosy surveillance effectiveness and trigger disease relapse⁵⁻⁶. Despite being uncommon when compared to other pathogens, we must not forget the existence of resistant strains.

Leprosy relapse is characterized by reoccurrence of the disease clinical activity (cutaneous and/or neurological) after regular treatment with standardized regimes, that is, when the patient is discharged as cured^{3,7,8,9,10}. Leprosy relapse cases typically occur between 2 and 15 years after having concluded the PCT treatment¹¹. According to the operational classification, the time for relapse occurrence is commonly seen in PB patients within five years after PCT and in MB patients in an equal or longer period of time¹²⁻¹⁷.

In 2021, it was estimated that 106 countries reported 140,594 new cases of the disease, indicating a 10.2% increase in the detection rate of new cases when compared to 2020. Also in 2021 there were 15,516 retreatment cases due to leprosy relapse, with 20% (3,201 cases) in 51 countries reporting relapse in patients after having concluded PCT, with the highest numbers in Brazil (1,212; 37%) and India (510; 16%)¹⁸⁻²².

With the advent of the COVID-19 pandemic, a global 37.1% reduction in newly recorded cases was observed when comparing 2020 (n=127,396) to 2019 (n=202,488). This suggests underreporting of cases in these years, which may also impact relapse cases²³.

Another issue that may be linked to leprosy relapse is antimicrobial resistance. WHO data on MDT resistance indicate that, out of 3,452 tested patients, 51 (1.5%) were diagnosed with *M. leprae* resistant to rifampicin, 49 (0.23%) to dapsone, three (0.1%) to ofloxacin, and four (0.11%) presented strains resistant to more than one antimicrobial¹⁸⁻²².

Considering that, although relapse cases are not included in the disease incidence indicator, they influence prevalence of the disease. In addition, the severity of leprosy relapse is not only related to bacillus infection but also to the social, emotional and psychological impacts involved in the illness context and people's experiences with the disease (such as long treatment periods, leprosy reactions, pain, stigma and disability).

It is in this context that the current systematic review becomes relevant. A preliminary search conducted on PROSPERO, MEDLINE, the Cochrane Database of Systematic Reviews and JBI Evidence Synthesis did not identify any current or ongoing systematic reviews on the theme.

This study aimed at synthesizing the best scientific evidence related to estimating the prevalence of leprosy relapse cases after polychemotherapy. Such knowledge might contribute more robust information on the topic, aiding in the planning of strategies for clinical management and surveillance in the care practice focused on the disease.

Review questions

Which is the estimated prevalence of leprosy relapse after PCT? Which are the characteristics of the studies related to clinical specificity (clinical form, relapse occurrence timing, bacilloscopy, histopathology, physical disability degree and multidrug resistance to the PCT components)? Which is the global estimate, by geographical region, of the relapse prevalence in the cases studied?

Inclusion criteria

The inclusion criteria were defined based on the PopCoCo mnemonic (Population, Condition, and Context). **Pop**: patients of any age and gender diagnosed with leprosy relapse after regular PCT treatment. **Co**: leprosy relapse was defined as

patients who, within a specific period, were diagnosed with retreatment due to relapse, meaning that they presented clinical activity of the disease (cutaneous and/or neurological) after regular treatment with a standardized regime (PB and MB), that is, they were discharged as cured. Relapse prevalence (%) was estimated (combined global prevalence and its respective confidence interval [CI]) by the countries where the primary studies were conducted. Relapse (number and %) concerning clinical specificity (PB/MB, relapse occurrence timing, bacilloscopy, physical disability degree [PDD], histopathology and multidrug resistance to PCT). **Co**: considered for any geographical region and health care level where the patient was diagnosed or underwent treatment.

Types of study

This review considered observational studies, such as analytical cross-sectional, retrospective and prospective cohort, case-control and experimental studies.

Studies lacking the frequency of relapse cases in the study population were excluded, as well as those where relapse was due to abandonment, irregular treatment, monotherapy or alternative treatment.

Method

This is a systematic review of prevalence studies following the JBI methodology^{24,25}. The systematic review protocol was registered in the International Prospective Register of Systematic Reviews (PROSPERO: CRD42020177141). The reporting stage adhered to the PRISMA recommendations.

Search strategy

An initial search limited to MEDLINE was conducted using Medical Subject Headings (MeSH) and related keywords (leprosy OR “Mycobacterium leprae” OR “relapse” OR “risk factors” OR prevalence).. This search was followed by a word analysis in the titles, abstracts and indexing terms used to describe the studies.

A second search, using all the keywords and indexing terms identified, was performed in the following databases: National Center for Biotechnology Information

(NCBI) from the National Library of Medicine (NLM)/ Medical Literature Analysis and Retrieval System Online (PubMed/MEDLINE); *Literatura Latino-Americana e do Caribe em Ciências da Saúde* (LILACS); Embase; Cumulative Index to Nursing and Allied Health Literature (CINAHL); Scopus; Web of Science (WoS); and, finally, the Caribbean Public Health Agency (CARPHA) for unpublished studies (Gray Literature). In the third stage, the reference lists of the studies selected in the full-reading phase were accessed.

The MeSH index term search included relapse, leprosy, risk factors and prevalence. The studies were identified based on a time clipping at 1981 due to the implementation of the treatment recommended by the WHO.

A preliminary search in the PubMed/Medline database was conducted (((leprosy[MeSH Terms]) OR (mycobacterium leprae[MeSH Terms])) OR (multibacillary leprosy[MeSH Terms])) OR (paucibacillary leprosy[MeSH Terms]) AND (((relapse[MeSH Terms]) OR (recurrence[MeSH Terms])) OR (risk factors[MeSH Terms])) OR (determinants health[MeSH Terms])) OR (prevalence[MeSH Terms])). From this strategy, other search strategies were developed according to each database.

Selection of the studies

All the studies identified were selected by two reviewers and exported in RIS (Research Information Systems) format to the Mendeley Desktop reference manager, version 1803, followed by SUMARI JBI²⁴.

Methodological quality assessment

The critical evaluation of the studies' methodological quality was conducted by two independent reviewers. In cases of assessments that resulted in disagreement, a third reviewer was consulted for evaluation. The quality of the publications included was assessed based on criteria derived from the JBI critical appraisal checklist for observational and experimental studies²⁴.

The cutoff point to include a study in the review was having 50% or more “Yes” answers to the standardized questions from the JBI critical appraisal tool for

studies containing prevalence data, ensuring greater confidence in the methodological rigor of the method used.

Data extraction

Data extraction was performed by independent reviewers. A data extraction table was used, created to assess the quality of demographic data, study locus, sample size, number of leprosy and relapse cases, number of PB and MB cases in the initial treatment and relapse, following the essential information from the JBI SUMARI data extraction instrument for systematic reviews of prevalence studies²⁴.

Data synthesis

The analyses were conducted in the Stata software, version 13.1.

Observational cohort studies were included for the meta-analysis. The inclusion of homogeneous studies enabled a meta-analysis of the relapse prevalence (%), estimating the combined global relapse prevalence and by country where each primary study was conducted. The random-effects meta-analysis model was applied to detail the overall combined relapse prevalence (global estimate). Heterogeneity across the studies was analyzed using the Higgins test (I^2), which indicates the variation percentage between studies through Confidence Intervals (95% CIs).

RESULTS

Study selection process

The search resulted in a total of 7,814 studies identified in the databases and five records from other reference sources. Of these, 5,216 studies were excluded for being duplicates, and 2,603 records were selected to read their titles and abstracts. Next, 107 studies were chosen for full-text reading and subsequent methodological assessment. A total of 41 studies were included in the review, and 18 in the meta-

analysis, as presented in the Preferred Reporting Items for Systematic Reviews and Meta- Analyses, JBI (Figure 1).

Characteristics of the population and clinical aspects according to the study designs

Of the 41 studies included in the review, totaling 93,461 leprosy patients, 3,830 (4.09%) were eligible for relapse after PCT. Within them, 2,670 (69.71%) underwent MB regimes (1,932; 72.36%) and PB regimes (738; 27.64%).

The main findings from the studies indicated that the relapse occurrence time after the initial PCT treatment is equal to or greater than 5 years after clinical cure, with higher prevalence of patients treated for MB^{26,27,28,29}. Complementary findings from the cohort studies revealed that relapse cases were more prevalent among cases with positive bacilloscopy when compared to those with negative bacilloscopy in the initial treatment^{13,14,15,30,31,32,33,34,35,36-50}.

The characteristics of these 18 studies included in the meta-analysis are presented in Chart 1^{14,15,31,32,33,34,36,37,39,40,42,45,46,47,48,49,50,51}. Of the total population suffering from leprosy analyzed in the meta-analysis (n=74,742), 867 (1.15%) were treated as relapse. Eight (0.93%) of these studies were classified as MB relapse^{14,15,32,34,42,46,47,51} and four (0.58%) by the PB classification^{15,32,46,50,51}. In the 12 studies, the male gender was more prevalent^{14,31,32,34,36,37,39,40,42,45,46,48} and the mean age was over 30 years old, with one study having a mean age below 15 years old^{14,15,31,32,34,36,37,42,45,46}. A bacilloscopy index ≥ 4 BI was observed in the studies evaluated^{14,31,32,33,34,36,37,40,42,45,46}. Histopathology was assessed in twelve studies, with prevalence of the borderline-lepromatous and lepromatous clinical forms^{14,31,32,34,36,37,40,42,45,49,48,49}. PDD was analyzed in seven studies, with prevalence of grade 1^{14,15,31,32,37,40,51}. Among the studies evaluated for information on resistance to PCT, one study reported single resistance to rifampicin, dapsones and resistance to rifampicin + dapsones³¹.

Chart 01- Descriptive synthesis of the main findings of the studies included in the meta-analysis.

REF.	STUDY	COUNTRY	INITIAL Tx.	RELAPSE	MB	PB	GENDER	MEAN AGE	BI	HISTO	PDD	RESISTANCE TO PCT	MAIN CONSIDERATIONS
31	Nascimento et al., 2022	Brazil	1,059	118	NA	NA	F- 46% M- 54%	±14.5	BI 0-6+: LL (55.5%;25/45), BL (54.5%; 6/11) MB, 73.5% (89/121) negative bacillary	Neural 6.3% BT 40.5% BB 7.1% BL 8.7% LL 37.3%	G0 43.7% G1 26.2 % G2 25.4%	Rifampicin and dapsone	The study identified higher relapse prevalence among MB cases and presence of resistance to the PCT drugs, highlighting resistance instances to all three medications.
37	Nery et al., 2021	Brazil	713	10	NA	NA	F- 2% M- 80%	32.3	In relapse, the BI median was 1.25	LL 46.3% BL 33.2% BB 19.7% BT 0.4% Indeterminate 0.3%	G0- 55.9% G1- 31.6% G2- 12.5%	NI	The study evidenced that, although a high bacterial load was considered a risk factor for relapse, no significant data were found to support the hypothesis.
39	Rajkumar et al., 2021	India	1,948	69	NA	NA	F- 31% M- 68%	34.5	06 positive BI = 0.25 to 4.5 (9.4%)	NA	G0- 73.52% G1- 10.30% G2- 16.20%	NA	The findings evidence a mean relapse occurrence time of 5 years, with the risk decreasing over the years.
34	Nair et al., 2017	India	389	39	31	8	F- 15.39% M- 84.61%	46.82	BI 0-4+ :35.90%	Indeterminate 7.70% Pure neuritic 7.70% BT 46.15% BB 2.56% BL 10.26% LL 20.52% Histoid 5.13%	35.89%	NI	Relapse was more common in leprosy cases with initially positive bacilloscopy. In relapse, 35.90% presented BI+ again. 57.14% of the relapse cases were treated with a fixed-duration regime for one year.
15	Pabru et al., 2015	India	2,183	58	29	29	F- 31% M- 69%	34	NI	NA	G0- 36.40% G1- 27.30% G2-36.4%	NI	Predominance of cases in MB. Men had significantly higher relapse rates than women.

14	Kumar et al., 2013	India	162	13	13	NA	>M	46.1	BI+: 15.4% BI-: 53.84% Not assessed: 30.80%	BT/BTR: 38.5% BB/BBR: 46.20% BL/LL/Neuritic: 15.4%	G0: 15.4% G1-2: 38.5% G>3:46.20%	NA	Predominance in individuals aged 34 years old, male gender, and among BB patients with reaction, BI was positive.
40	Kumar et al., 2012	India	599	35	NA	NA	F- 54.7 M - 45.3	34.2	BI 1+: 0.3%	BT: 84.3%	G0- 79% G1: 40%	NA	Physical disability was 2.2% and varied significantly by age and nerve thickening.
33	Maghanoy et al., 2011	Philippines	300	29	29	NA	M- 100%	30	BI 2+: 0.6%	BL: 100%	NA	NI	The study suggests that drug resistance is less likely due to the patient's smear negativity before recurrence.
36	Balagon et al., 2009	India	500	23	NA	NA	F- 25% M- 75%	32.5	BI 4.0+: 36%	BB 9% BL 26% LL 47.80% Histoid 17.40%	NA	NI	Relapse showed an approximate ratio of 6 to 1 between men and women. The relapse rate peaked at 11 and 12 years.
42	Poojabyajiah et al., 2008	India	300	3	3	NA	M- 100%	45.3	BI 2+: 33.33% BI 3+: 33.33% BI 4+: 33.33%	BT 26.99% BB 7.37% BL 29.45% LL 36.19%	NA	NA	All relapse cases were in males with LL disease. The relapse cases were in patients who received PCT until smear negativity, when compared to those who underwent fixed-duration therapy.
32	Shen et al., 2006	China	2,139	5	NA	NA	NA	NA	BI 1.80_5.33+: 100%	NA	NA	NA	The relapse cases occurred 48-158 months after having concluded PCT. The relapse rate for MB patients treated with a 24-month regime was observed to be very low after long-term follow-up.
51	Ali et al., 2005	India	3,248	58	3	55	F- 43% M- 57%	NI	NI	NI	G1-2: 56.36%	NA	Relapse was recorded up to a maximum of 16 years after the fixed-duration treatment.

45	Cellona et al., 2003	India	500	15	NA	NA	F- 25% M- 75%	32.5	BI \geq 4+: 36% BI $<$ 4+: 64%	BL: 60% LL: 40%	NA	NA	The study evidenced that, in patients followed-up for \geq 12 years and who had initial BI \geq 2.7+, the relapse rate was 13% (13/98) vs. 0% (0/44) in those with initial BI $<$ 2.7.
50	Chen et al., 1999	China	47,276	221	NA	NA	NA	NA	NI	NA	NA	NA	The relapse rate in patients treated with PCT-PB was significantly higher than in those treated with PCT-MB. The relapse risk is higher in PCT-PB patients in the first 8 years ($p<0.01$). In PB leprosy, more than half (55.8%) relapsed with MB leprosy ($p<0.01$).
46	Li et al., 1997	China	5,989	16	5	11	F- 23% M- 77%	39.5	BI 1-4+: 81.25% BI -: 18.75%	LL: 25% BL: 37.5% BT: 18.75% BB: 18.75%	NA	NA	Mean relapse rate of patients treated for MB: 5 / 26,804 = 0.19 / 1,000 persons/year.
47	Becx et al., 1992	Ethiopia	5,444	58	34	2	NA	NA	NC	NC	NA	NA	Relapse did not vary significantly from year to year ($p=0.25$).
48	Boerrigter et al., 1991	Malawi	484	12	NA	NA	F- 33% M- 67%	NI	NI	TT: 8.33% TT/BT: 8.33% BT: 58.33% BB: 25%	NI	NA	Relative lack of cell-mediated immunity, as indicated by the number of lesions, clinical classification and lepromin test results, along with poor compliance with the PCT dapsone component, was associated with an increased relapse risk.
49	Grugni et al., 1990	India	1,509	85	NA	NA	NA	NA	NI	Indeterminate: 3.61% Tuberculoid: 30.12% Borderline: 65% Pure neuritic: 3.61%	G1: 79% G2: 15% G1-2: 6%	NA	A relapse rate of 5.63% was estimated; 79% of the patients relapsed with cutaneous lesions, 15% presented neuritis, and 6% had a mixed pattern.

NA - Not Assessed; NC - Not Clear; NI - Not Identified; F - Female; M- Male; BI - Bacilloscopy Index; HISTO - Histopathology; PDD - Physical Disability Degree

Meta-analysis: Synthesis of the prevalence review findings

The overall prevalence of leprosy relapse was 11% (95%CI: 0.090-0.12) with a null effect. Heterogeneity was assessed using the I^2 statistic and was very high (>90%). Among the eight studies with the largest populations, individually assessed, the prevalence of relapse varied from 0% to 0.06% (weight: 5.27-5.49). The subgroup of studies conducted in China indicated 0% prevalence (95%CI: 0.00, 0.01). Two countries presented higher relapse prevalence percentages, with Brazil at 31% (95%CI: 0.07, 0.56), followed by India at 13% (95%CI: 0.05, 0.20), as shown in Table 1 and Figure 02.

Table 01- Synthesis of the data from the meta-analysis studies.

REF.	STUDY	COUNTRY	TOTAL POP.	RELAPSE POP.	WEIGHT	95%CI
31	Nascimento et al., 2022	Brazil	1,059	118	4.94	0.09, 0.13
37	Nery et al., 2021	Brazil	713	10	5.37	0.01, 0.03
39	Rajkumar et al., 2021	India	1,948	69	5.38	0.03, 0.04
34	Nair et al., 2017	India	389	39	4.30	0.07, 0.13
15	Pabru et al., 2015	India	2,183	58	5.42	0.02, 0.03
14	Kumar et al., 2013	India	162	13	3.55	0.05, 0.13
40	Kumar et al., 2012	India	599	35	4.95	0.04, 0.08
33	Maghanoy et al., 2011	Philippines	300	29	4.07	0.07, 0.14
36	Balagon et al., 2009	India	500	23	4.97	0.03, 0.07
42	Poojabylaiah et al., 2008	India	300	3	5.28	0.00, 0.03
32	Shen et al., 2006	China	2,139	5	5.49	0.00, 0.01
51	Ali et al., 2005	India	3,248	58	5.46	0.01, 0.02
45	Cellona et al., 2003	India	500	15	5.13	0.02, 0.05
50	Chen et al., 1999	China	47,276	221	5.49	0.00, 0.01
46	Li et al., 1997	China	5,989	16	5.49	0.00, 0.00
47	Becc et al., 1992	Ethiopia	5,444	58	5.48	0.01, 0.01
48	Boerrigter et al., 1991	Malawi	484	12	5.18	0.01, 0.04
49	Grugni et al., 1990	India	1,509	85	5.27	0.05, 0.07
Total			74,742	867	100.00	0.09, 0.12

DISCUSSION

The clinical characteristics of the studies included showed that the relapse occurrence time was consistently equal to or greater than 5 years after clinical cure. In diagnosing relapse, higher prevalence was observed among male patients aged over 30 years old. There was relapse predominance in multibacillary patients with positive bacilloscopy and the borderline tuberculoid and lepromatous relapse clinical forms in patients with grade 1 physical disabilities. The systematic review also indicated multidrug resistance to PCT, with drug-resistant variants related to single resistance to rifampicin and dapson, as well as resistance to rifampicin + dapson.

The regions analyzed in this review included India, Brazil, Indonesia, China, Malawi, Ethiopia, Colombia and the Philippines. The global prevalence estimate in the studies analyzed in the meta-analysis was 11%, although it presented a null effect. When evaluating the subgroups based on the country where each study was conducted, Brazil had the highest prevalence of cases (31%), followed by India (13%).

In our study, the systematic review of prevalence data is important for describing the geographical distribution among subgroups, providing information for health care planning and resource allocation. Therefore, it is necessary to monitor the trends in burden and emergence of the disease, in this case, the relapse prevalence. The countries historically reporting the highest numbers of newly detected cases worldwide are India and Brazil^{20,23}. Therefore, planning guidelines should prioritize to minimize the disease burden in these regions, focusing on systematic care for early and timely treatment of all cases and systematic surveillance of the contacts^{53,54}.

The primary indicator of treatment efficacy in leprosy cases is the low relapse percentage after its conclusion. However, relapse cases may be underestimated. Therefore, some studies suggest that occurrences of acute inflammatory episodes corresponding to leprosy reactions after therapeutic treatment conclusion can be frequent in the early years after treatment. However, they need to be differentiated from relapses, requiring clinical and laboratory resources^{55,56}. The findings also suggest that countless aspects related to the disease lack more robust primary studies, mainly regarding factors associated with relapse occurrence in the population, particularly in countries with higher burden of the disease.

The meta-analysis also evidenced that, among the eight studies with a larger population evaluated individually, the prevalence of relapse varied from 0.00% to

0.06%. Considering that the studies conducted in China showed 0% prevalence, it also suggests more precise and methodologically robust studies. Despite a reduction in the relapse prevalence is noticed in these groups, the magnitude and high disabling power of the disease continue to make it a Public Health problem^{23,57}.

According to WHO data in 2021, 20% of 51 countries reported retreatment due to relapse after MDT, with a higher proportion in Brazil (37%) and India (16%). This is in line with the higher prevalence findings obtained in this review for these countries. Although the meta-analysis indicates a null effect of overall relapse, it is crucial to prioritize leprosy control strategies mainly in these countries. The relapse incidence has a multifactorial context but. in some cases, it may indicate therapeutic failure. In addition, the prevalence of relapse cases with positive bacilloscopy poses a significant obstacle, as they are considered “active” infectious cases capable of transmitting leprosy^{35,38,58,59}.

Therefore, implementing early and accurate diagnosis and treatment, as well as eliminating active sources of infection, is one of the main challenges in reducing the burden of this disease. In this context, the WHO operational classification system based on the number of skin lesions can mainly lead to misclassification of MB as PB cases, consequently increasing the relapse chances in the more severe forms of the disease^{50,61}.

In this review, the studies evidence higher occurrence of leprosy relapse in a period equal to or more than 5 years after PCT treatment. This suggests the need for improvements in clinical management strategies and to expand the systematic surveillance period for cases that have been discharged as cured in health services^{12,27,33,62}.

The higher occurrence of relapse in men aged at least 30 years old can be associated with the fact that they are more affected as new cases, low health service utilization, environmental factors in the person's occupation, or men's hormonal predisposition to the bacillus, as highlighted in some studies^{12,29,63,64,65}.

A higher relapse prevalence was observed among the MB leprosy cases. Patients with MB leprosy are at a higher risk of developing relapse when compared to those with PB leprosy, which can be related to the fact that MB patients have high bacillary loads. The importance of each person's genetics cannot be overlooked^{31,52}. However, it is worth noting that, among the primary studies classified as PB in the first treatment, there was higher relapse prevalence as MB, suggesting potential errors in the disease operational classification in the initial treatment^{32,66}.

Some studies estimate that the chance of correctly categorizing an MB patient is 71.3%, turning diagnostic errors into one of the main factors associated with disease relapse^{62,67}. In addition to increasing the relapse chances, this contributes to persistent presence of bacilli in the communities, as indicated by results from genetic sequencing studies that identified presence of MDT-resistant bacilli in the initial treatment, and more frequently among the relapse cases^{34,35, 67,68,69}. The findings also emphasize that people living in endemic and hyperendemic areas have natural susceptibility to infection and relapse due to endogenous or exogenous reinfection by the *M. leprae*^{53,54,55,62,65} bacillus.

The reinfection issue in these cases can be related not only to individual factors such as immunological deficiency to the bacillus but mainly to the deficit in strategies for the epidemiological surveillance of cases and contacts. There is a need to invest in *M. leprae* detection through molecular biology techniques, such as laboratory support tools^{34,61,66,67}.

Currently, the diagnostic methods available in health services are mostly bacilloscopy, histopathology and the Mitsuda test, which alone are not sensitive or specific for the correct clinical and operational classification of leprosy, with the possibility of leading to misclassification of MB as PB cases. The results of these tests can increase the relapse chances in more severe forms of the disease^{55,60}.

Expanding access to diagnostic tests that assist in the correct operational classification in the initial treatment is essential for controlling spread of the bacilli, especially the resistant ones, in regions considered hyperendemic for the disease, such as diagnostic tests based on molecular techniques using biomarkers like PCR and NDO-LID^{55,60,62,68,69,70}.

Regarding resistance to PCT, although only one study³³ from those included in the meta-analysis analyzed this factor associated with relapse, other studies in the review, not included in the meta-analysis, provided data on mutations in the *M. leprae* genes, presenting resistance to dapsone and rifampin. In addition, patients with mutations for resistance to dapsone and rifampin and genes with mutations resistant to all three PCT drugs were reported in several studies^{35,53,54,70, 71,72,73,74,75}.

Some studies reinforce that global efforts to control leprosy through intensive chemotherapy have led to a significant decrease in the number of patients recorded; however, it is indispensable to monitor for multidrug resistance for maintaining treatment effectiveness. Studies conducted in hyperendemic countries have shown

multidrug resistance to rifampin and dapsone in new cases and relapses. When combined with molecular resistance and VNTR, some data revealed diverse evidence of intrafamilial primary transmission of resistant *M. leprae*^{35,54}.

Thus, in a context of controlling spread of the bacillus, correct and early diagnosis and extended surveillance of cured cases and contacts are crucial for reducing the number of new cases and relapse of the disease^{3,6,17,22,37,46,76}. The unified treatment (PCT-U) that would waive the need for operational classification, recommended in 2020 by the Ministry of Health in Brazil, is not yet a national or global reality and was not analyzed in this review^{62, 63,64,72,78,79}.

Therefore, the results of this review reinforce the need for systematic follow-up of leprosy-treated patients, aimed at screening reactivation cases due to relapse of the disease, which can cause reinfections resistant to the standardized regimes.

Limitations

This review presented some limitations, as not all the studies included provided information regarding the operational classification at the initial diagnosis and at the relapse time, making it impossible to perform a meta-analysis regarding the disease relapse operational classification. The limited information on age and gender in the primary studies also posed hindered the analyses. Nevertheless, the conclusions drawn from the analysis of the studies included can contribute to expanding the available knowledge and serve as evidence to aid decision-making regarding control of the disease, especially in the current context of introducing PCT-U.

CONCLUSION

The systematic review with meta-analysis indicated high global prevalence of leprosy relapse after PCT, with higher estimates in India and Brazil, countries with greater burdens of the disease.

Recommendations for the clinical practice

Based on the findings of this review, it is recommended to formulate Public Health policies to: ground and guide care for people with leprosy and their contacts;

expand access to diagnostic tests both for initial diagnosis and for early relapse: invest in health professionals' training to improve systematic monitoring of cases and contacts; as well as develop more universally effective strategies, mainly in countries such as India and Brazil, which presented a higher global estimated prevalence of leprosy relapse.

In addition, the findings suggest the need for robust studies on the leprosy bacillus resistance to the PCT drugs among new leprosy cases and to develop diagnostic methods to detect this resistance and reinfection cases.

Recommendation for research

Based on this review, there is a notable need for expanding molecular studies aimed at accurately detecting resistant strains and reinfection cases. These studies might provide crucial information for decision-making regarding future chemotherapeutic approaches in leprosy control, particularly given the current scenario and the need to address problems related to diagnostic errors in the clinical condition, mainly in the current model of the unified treatment (PCT-U) for leprosy. Therefore, they might contribute to the implementation of more assertive Public Health policies and surveillance strategies, ultimately reducing the socioeconomic impact caused by the disease.

Some factors require more robust studies, especially those associated with leprosy relapse occurrence since, despite the reduction in new cases, there is still significant prevalence of leprosy relapse cases in the population, especially in countries with higher burdens of the disease.

Supporting information

Figure 1- Synthesis of the systematic review stages according to the Preferred Reporting Items for Systematic Reviews and Meta-Analyses⁽²⁵⁾⁽²⁴⁾.

Figure 02- Forest plot for a random-effects meta-analysis of the overall leprosy relapse prevalence by country where each study was conducted.

FINANCIAL SUPPORT

Coordination for the Improvement of Higher Education Personnel
(*Coordenação de Aperfeiçoamento de Pessoal de Nível Superior, CAPES*) through the
Support Program for Graduate Studies (*Programa de Apoio à Pós-Graduação, PROAP*)
at the Federal University of Mato Grosso.

REFERENCES

1. Santos VS, Nardelli GG, Gaudenci EM, Pedrosa LAK, De Melo LM. Qualidade de vida, depressão e incapacidade física de pacientes com hanseníase. *JMPHC | J Manag Prim Heal Care* | ISSN 2179-6750. 2017;7(1):41–41.
2. Barcelos RMFM, de Sousa GS, de Almeida MV, Palacio FGL, Gaíva MAM, Ferreira SMB. Leprosy patients quality of life: a scoping review. *Rev da Esc Enferm*. 2021;55:1–12.
3. World Health Organization (WHO). *Global Leprosy Strategy 2016–2020*. 2017. 102 p.
4. World Health Organization (WHO). World Health Organization. Global leprosy (Hansen disease) update, 2019: time to step-up prevention initiatives. *Wkly Epidemiol Rec* [Internet]. 2020;95(36):417–40. Available from: <http://www.who.int/wer>
5. Medeiros Brito MDF, Gallo MEN, Ximenes RAA. Retreatment of leprosy relapse. *An Bras Dermatol* [Internet]. 2005;80(3):255–60. Available from: <http://www.embase.com/search/results?subaction=viewrecord&from=export&id=L41025650>
6. Ferreira SMB, Yonekura T, Ignotti E, Oliveira LB De, Takahashi J, Soares CB. Effectiveness of rifampicin chemoprophylaxis in preventing leprosy in patient contacts : a systematic review of quantitative and qualitative evidence. *Joanna Briggs Institute Unauthorized*. 2017;2555–84.
7. World Health Organization (WHO), 1988. Comitê de Espertos de a OMS en Lepra. *Technical Report Series N° 768*. Geneva: WHO.
8. World Health Organization (WHO), 1994. *The Leprosy Unit. Risk of Relapse in Leprosy*. Geneva: WHO/CTD/ LEP/94.1. (mimeo.)
9. Gallo MEN, Oliveira MLW. Recidivas e reinfecção em hanseníase. *Medicina (Ribeirão Preto)*. 1997;30(3):351-7.
10. Ministério da saúde (MS). Nota Informativa no 51 , de 2015 CGHDE / DEVIT / SVS / MS. Secretaria de Vigilância em Saúde Departamento de Vigilância das doenças Transmissíveis. 2015.
11. Ferreira SMB, Ignotti E, Gamba MA. Características clínico-laboratoriais no retratamento por recidiva em hanseníase. *Rev Bras Epidemiol*. 2012;15(3):573–81.
12. Moet FJ, Meima A, Oskam L, Richardus JH. Risk factors for the development of clinical leprosy among contacts , and their relevance for targeted interventions. *Lepr Rev*. 2004;75(4):310–26.
13. Guerrero-Guerrero MI, Muvdi-Arenas S, León-Franco CI. Relapses in multibacillary leprosy patients: a retrospective cohort of 11 years in Colombia. *Lepr Rev*. 2012;83(3):247–60.

14. Kumar A, Girdhar A, Girdhar BK, A. K, A. G, B.K. G. Twelve months fixed duration WHO multidrug therapy for multibacillary leprosy: incidence of relapses in Agra field based cohort study. *Indian J Med Res* [Internet]. 2013 Oct;138(4):536–40. Available from: <http://www.embase.com/search/results?subaction=viewrecord&from=export&id=L370232371>
15. Prabu R, Manickam P, Mahalingam VN allamuth., Jayasree P, Selvaraj V, Mehendale SM adha. Relapse and deformity among 2177 leprosy patients released from treatment with MDT between 2005 and 2010 in South India: A retrospective cohort study. *Lepr Rev*. 2015;86(4):345–55.
16. Sá Ptt De. Fatores Associados À Recidiva Em Hanseníase No Brasil: Um Estudo De Caso-Controle. *Appl Microbiol Biotechnol* [Internet]. 2020;2507(1):1–9. Available from: <https://doi.org/10.1016/j.solener.2019.02.027%0Ahttps://www.golder.com/insights/block-caving-a-viable-alternative/%0A???>
- 17 Silva DS e, Júnior JILP, Pedrosa VL, Talhari C. Leprosy in the state of Amazonas: is there actually a decrease in its incidence and prevalence? *An Bras Dermatol*. 2022;97(4):513–5.
18. World Health Organization (WHO). Anti-Microbial Resistance in Leprosy Report of the virtual consultation. 2021;(June):1–45. Available from: <http://apps.who.int/bookorders>.
19. World Health Organization (WHO). World Health Organization. Global leprosy (Hansen disease) update, 2019: time to step-up prevention initiatives. *Wkly Epidemiol Rec*. 2020;95(36):417–40.
20. Ministério da saúde (MS). Boletim Epidemiológico. Ministério da Saúde Secr Vigilância em Saúde. 2022;
21. Liu L, Johnson HL, Cousens S, Perin J, Scott S, Lawn JE, et al. Global, regional, and national causes of child mortality: an updated systematic analysis for 2010 with time trends since 2000. *Lancet* (London, England). 2012 Jun;379(9832):2151–61.
22. World Health Organization (WHO). Global leprosy (Hansen disease) update , 2021 : moving towards interruption of transmission Situation de la lèpre (maladie de Hansen) dans le monde , 2021 : vers l ' interruption de la transmission. 2022;2021:429–50.
23. World Health Organization (WHO). Global leprosy (Hansen disease) update, 2020: impact of COVID-19 on global leprosy control. *Wkly Epidemiol Rec* [Internet]. 2021;96(36):421–444. Available from: <https://www.who.int/publications/i/item/who-wer9636-421-444>
24. Aromataris E MZ (Editors). *JBIManual for Evidence Synthesis*. JBI Manual for Evidence Synthesis. 2020.

25. Page MJ, McKenzie JE, Bossuyt PM, Boutron I, Hoffmann TC, Mulrow CD, et al. The PRISMA 2020 statement: An updated guideline for reporting systematic reviews. *BMJ*. 2021;372.
26. Chagas DF, Diniz LM, Lucas EA, de Moraes MO. Relapse in leprosy and drug resistance assessment in a tertiary hospital of the state of Espírito Santo, Brazil. *Rev Soc Bras Med Trop* [Internet]. 2021;54. Available from: <https://www.embase.com/search/results?subaction=viewrecord&id=L2006911274&from=export>
27. Narang T, Kamat D, Thakur V, Lavania M, Singh I, Ahuja M, et al. Equal rates of drug resistance in leprosy cases with relapse and recurrent/chronic Type 2 reaction: time to revise the guidelines for drug-resistance testing in leprosy? *Clin Exp Dermatol* [Internet]. 2021;47(2):297–302. Available from: <https://www.embase.com/search/results?subaction=viewrecord&id=L2013783745&from=export>
28. Farias KN, Nogueira PSF, Sales JMR, Silva MJ da, Marques MB. The trend of leprosy epidemiological indicators in the elderly population from the Ceará state (2002 to 2014). *Rev Pesqui Cuid é Fundam Online*. 2020;992–8.
29. Almeida KT, Fernandes Menezes AM, Araújo Nascime Alves K, Rodrigues Carmo Filho JO, Araújo Nascimento Costa AK. Leprosy Relapse Between The Years 2005-2015. *J Nurs UFPE / Rev Enferm UFPE* [Internet]. 2018 Oct;12(10):2528–34. Available from: <http://search.ebscohost.com/login.aspx?direct=true&db=c8h&AN=132282273&lang=pt-br&site=ehost-live&authtype=ip,cookie,uid>
30. Gonçalves FGFG, Belone ADFFA de FFA de FF, Rosa PSPSPSPS, Laporta GZGZ, Goncalves FG, Belone ADFFA de FFA de FF, et al. Underlying mechanisms of leprosy recurrence in the Western Amazon: a retrospective cohort study. *BMC Infect Dis* [Internet]. 2019 May 22;19(1):N.PAG-N.PAG. Available from: <http://search.ebscohost.com/login.aspx?direct=true&db=c8h&AN=136593971&lang=pt-br&site=ehost-live&authtype=ip,cookie,uid>
31. Nascimento ACMD, dos Santos DF, Antunes DE, Gonçalves MA, Santana MADO, Dornelas BDC, et al. Leprosy Relapse: A Retrospective Study on Epidemiologic, Clinical, and Therapeutic Aspects at a Brazilian Referral Center. *Int J Infect Dis* [Internet]. 2022;118:44–51. Available from: <https://www.embase.com/search/results?subaction=viewrecord&id=L2017202747&from=export>
32. Shen J, Liu M, Zhang J, Su W, Ding G. Relapse in MB leprosy patients treated with 24 months of MDT in South West China: A short report. *Lepr Rev*. 2006;77(3):219–24.

33. Maghanoy A, Mallari IB, Balagon M, P. S, Maghanoy A, Mallari I, et al. Relapse study in smear positive multibacillary (MB) leprosy after 1 year WHO-multi-drug therapy (MDT) in Cebu, Philippines. *Lepr Rev* [Internet]. 2011 Mar;82(1):65–9. Available from: <http://www.embase.com/search/results?subaction=viewrecord&from=export&id=L361821663>
34. Nair SP, Mathew R. Relapse in leprosy in post-elimination phase: Scenario from a tertiary care center in South India. *Indian J Lepr* [Internet]. 2017;89(3):119–25. Available from: <http://www.embase.com/search/results?subaction=viewrecord&from=export&id=L619619873%0Ahttp://vu.on.worldcat.org/atoztitles/link?sid=EMBASE&issn=02549395&id=doi:&atitle=Relapse+in+leprosy+in+post-elimination+phase%3A+Scenario+from+a+tertiary+care+center+in>
35. Lavania M, Singh I, Turankar RP, Ahuja M, Pathak V, Sengupta U, et al. Molecular detection of multidrug-resistant *Mycobacterium leprae* from Indian leprosy patients. *J Glob Antimicrob Resist* [Internet]. 2017;12:214–9. Available from: <http://dx.doi.org/10.1016/j.jgar.2017.10.010>
36. Balagon MF, Cellona R V, Cruz E dela, Burgos JA, Abalos RM, Walsh GP, et al. Long-term relapse risk of multibacillary leprosy after completion of 2 years of multiple drug therapy (WHO-MDT) in Cebu, Philippines. *Am J Trop Med Hyg* [Internet]. 2009 Nov;81(5):895–9. Available from: <http://www.embase.com/search/results?subaction=viewrecord&from=export&id=L355704192>
37. Nery JAC, Sales AM, Hacker MAVB, Moraes MO, Maia RC, Sarno EN, et al. Low rate of relapse after twelve-dose multidrug therapy for hansen's disease: A 20-year cohort study in a brazilian reference center. *PLoS Negl Trop Dis* [Internet]. 2021;15(5). Available from: <https://www.scopus.com/inward/record.uri?eid=2-s2.0-85106540517&doi=10.1371%2Fjournal.pntd.0009382&partnerID=40&md5=f27c4cbb1c2aa74bb6b86c61e9fc1cee>
38. Nery JA da C, Sales AM, Hacker M, Moraes MO, Maia RC, Illarramendi X. Regular twelve- dose multidrug therapy for leprosy patients has a low rate of relapse: a 20 year cohort study in a brazilian reference center. *Lancet Glob Heal*. 2020;20.
39. Rajkumar P, Purushothaman GKC, Ponnaiah M, Shanmugasundaram D, Padma J, Meena RL, et al. Low risk of relapse and deformity among leprosy patients who completed multi-drug therapy regimen from 2005 to 2010: A cohort study from four districts in south india. *PLoS Negl Trop Dis* [Internet]. 2021;15(11). Available from: <https://www.embase.com/search/results?subaction=viewrecord&id=L2014775329&from=export>
40. Kumar A, Girdhar A, Girdhar BK. Six months fixed duration multidrug therapy in paucibacillary leprosy: risk of relapse and disability in Agra PB cohort study. *BMJ Open*. 2012;2(4).

41. Vara N, Agrawal M, Marfatia Y. Leprosy beyond MDT: study of follow-up of 100 released from treatment cases. *Indian J Lepr.* 2010;82(4):189–94.
42. Poojabylaiah M, Marne RB, Varikkodan R, Bala N, Dandakeri S, Martis J, et al. Relapses in multibacillary leprosy patients after Multidrug therapy. *Lepr Rev [Internet].* 2008 Sep;79(3):320–4. Available from: <http://www.embase.com/search/results?subaction=viewrecord&from=export&id=L352712144>
43. Matsuoka M, Budiawan T, Aye KS, Kyaw K, Tan EV, Dela Cruz E, et al. The frequency of drug resistance mutations in *Mycobacterium leprae* isolates in untreated and relapsed leprosy patients from Myanmar, Indonesia and the Philippines. *Lepr Rev.* 2007;78(4):343–52.
44. M.K. Showkath Ali¹, D.M. Thorat², M. Subramanian³, G. Parthasarathy⁴, U. Selvaraj⁵ VP. A Study On Trend Of Relapse In Leprosy And Factors Influencing Relapse. 2005;105–15.
45. Cellona R V., Balagon MVF, Dela Cruz EC, Burgos JA, Abalos RM, Walsh GP, et al. Long-term Efficacy of 2 Year WHO Multiple Drug Therapy (MDT) in Multibacillary (MB) Leprosy Patients. *Int J Lepr Other Mycobact Dis.* 2003;71(4):308–19.
46. Li H, Hu L, Huang W, Liu G, Yuan L. Risk of Relapse in Leprosy After Fixed-Duration Multidrug Therapy . 1997;65(2).
47. Becxbleumink M, Becx-Bleumink M, becxbleumink M, Becx-Bleumink M, M. B-B. Relapses among leprosy patients treated with multidrug therapy: Experience in the leprosy control program of the All Africa Leprosy and Rehabilitation Training Center (ALERT) in Ethiopia; practical difficulties with diagnosing relapses; operational proced. *Int J Lepr OTHER Mycobact Dis [Internet].* 1992 Sep;60(3):421–35. Available from: <http://www.embase.com/search/results?subaction=viewrecord&from=export&id=L22369047>
48. Boerrigter G, Ponnighaus JM, Fine PE, Wilson RJ, G. B, J.M. P, et al. Four-year follow-up results of a WHO-recommended multiple-drug regimen in paucibacillary leprosy patients in Malawi. *Int J Lepr Other Mycobact Dis [Internet].* 1991 Jun;59(2):255–61. Available from: <http://www.embase.com/search/results?subaction=viewrecord&from=export&id=L21253570>
49. Grugni A, Nadkarni NJ, Kini MS, Mehta VR. Relapses in paucibacillary leprosy after MDT--a clinical study. *Int J Lepr Other Mycobact Dis.* 1990 Mar;58(1):19–24.
50. Chen XS, Li WZ, Jiang C, Ye GY. Studies on risk of leprosy relapses in China: Relapses after treatment with multidrug therapy. *Int J Lepr Other Mycobact Dis.* 1999;67(4):379–87.

51. Ali, M.K. S, Thorat D.M. , Subramanian M., Parthasarathy G., Selvaraj U., Prabhakar V. A Study On Trend Of Relapse In Leprosy And Factors Influencing Relapse. Indian] Lepr Vol.77(2). 2005.
52. Boigny RN, Florêncio CMGD, Cavalcante KKS, Moreno JO, Almeida PJ, Almondes JGS, et al. Magnitude and temporal trends of leprosy relapse in the state of Ceará, Brazil in the period 2001–2018. Rev Soc Bras Med Trop [Internet]. 2021;54. Available from: <https://www.embase.com/search/results?subaction=viewrecord&id=L2006797763&from=export>
53. Cambau E, Saunderson P, Matsuoka M, Cole STT, Kai M, Suffys P, et al. Antimicrobial resistance in leprosy: results of the first prospective open survey conducted by a WHO surveillance network for the period 2009–15. Clin Microbiol Infect [Internet]. 2018 Dec;24(12):1305–10. Available from: <http://www.embase.com/search/results?subaction=viewrecord&from=export&id=L2000608267>
54. Rosa FL. Update on leprosy relapse and reinfection after multidrug therapy. J Dermatol Nurses Assoc [Internet]. 2020;12(2). Available from: <https://www.embase.com/search/results?subaction=viewrecord&id=L634422257&from=export>
55. Ximenes RAA, Gallo MEN, Brito M de F de M. Retreatment in leprosy: a case-control study TT - Retratamento de hanseníase: estudo de caso-controle. Rev Saude Publica [Internet]. 2007;41(4):632–7. Available from: http://www.scielo.br/scielo.php?script=sci_arttext&pid=S0034-89102007000400018&lang=en
56. Ferreira SMB, Ignotti E, Gamba MA. Factors associated to relapse of leprosy in Mato Grosso, Central-Western Brazil. Rev Saúde Pública. 2011;45(4):2006–10.
57. Ministério da Saúde. Guia prático sobre a hanseníase [Internet]. Ministério da Saúde. Secretaria de Vigilância em Saúde. 2017. 70 p. Available from: http://bvsmms.saude.gov.br/bvs/publicacoes/guia_pratico_hanseníase.%0Apdf
58. B.K. G, A. G, A. K, Girdhar BK, Girdhar A, Kumar A. Relapses in multibacillary leprosy patients: Effect of length of therapy. Lepr Rev [Internet]. 2000 Jun;71(2):144–53. Available from: <http://www.embase.com/search/results?subaction=viewrecord&from=export&id=L30465827>
59. K Jesudasan, P Vijayakumaran, N Manimozhi, T Jeyarajan, P S Rao. Absence of relapse within 4 years among 34 multibacillary patients with high BIs treated for 2 years with MDT. Int J Lepr Other Mycobact Dis. 1996 Jun;64(2):133-5. Available from: <http://ila.ilsl.br/pdfs/v64n2a06.pdf>
60. Maia Rc. Recidiva De Hanseníase Em Pacientes Tratados Com Poliquimioterapia 12 Doses. Ministério Da Saúde Fundação Oswaldo Cruz Instituto Oswaldo Cruz. 2019;118.

61. Freitas, Bruna Hinnah Borges Martins de ; Cortela, Denise Da Costa Boamorte; Ferreira, Silvana Margarida Benevides . Trend of leprosy in individuals under the age of 15 in Mato Grosso (Brazil), 2001-2013. *Revista de saúde pública (online)* ^{JCR}, v. 51, p. 1-9, 2017.
62. Stefani MMA, Avanzi C, Bühner-Sékula S, Benjak A, Loiseau C, Singh P, et al. Whole genome sequencing distinguishes between relapse and reinfection in recurrent leprosy cases. *PLoS Negl Trop Dis*. 2017;11(6):1–13.
63. Arruda, H., 1988. Alterações Testiculares na Hanseníase. Tese de Doutorado, São Paulo: Escola Paulista de Medicina, Universidade Federal de São Paulo.
64. Bona SH, Silva LOBV, Costa UA, Holanda AON, Campelo V. Recurrence of leprosy in reference centers in Teresina, State of Piauí, Brazil, 2001-2008. *Epidemiol Serv Saúde*. 2015 Oct; 24(4):731-8
65. Kaimal S, Thappa DM, S. K, D. T, Kaimal S, Thappa DM. Relapse in leprosy. *Indian J Dermatol Venereol Leprol* [Internet]. 2009;75(2):126–35. Available from: <http://www.embase.com/search/results?subaction=viewrecord&from=export&id=L354382836>
66. Silva Rocha A, Cunha M das G, Diniz LM, Salgado C, Aires MAP, Nery JA, et al. Drug and multidrug resistance among Mycobacterium leprae isolates from Brazilian relapsed leprosy patients. *J Clin Microbiol* [Internet]. 2012 Jun;50(6):1912–7. Available from: <http://www.embase.com/search/results?subaction=viewrecord&from=export&id=L364848209>
67. Cruz RC da S, Penna MLF, Talhari S, Bühner-Sékula S, Penna GO. Leprosy: Current situation, clinical and laboratory aspects, treatment history and perspective of the uniform multidrug therapy for all patients. *An Bras Dermatol*. 2017;92(6):761–73.
68. Penna GO, Bühner-Sékula S, Kerr LRS, Stefani MM de A, Rodrigues LC, de Araújo MG, et al. Uniform multidrug therapy for leprosy patients in Brazil (U-MDT/CT-BR): Results of an open label, randomized and controlled clinical trial, among multibacillary patients. *PLoS Negl Trop Dis*. 2017;11(7):1–19.
69. Ahuja M, Singh I, Lavana M, Pathak VK, Darlong J, Turankar RP, et al. Ofloxacin resistance in multibacillary new leprosy cases from Purulia, West Bengal: A threat to effective secondary line treatment for rifampicin resistant leprosy cases. *J Glob Antimicrob Resist* [Internet]. 2022; Available from: <https://www.embase.com/search/results?subaction=viewrecord&id=L638267734&from=export>
70. Ministério da saúde (MS). Nota Técnica 16-21 Pqt Unica. Ministério da Saúde Secr Vigilância em Saúde. 2021;1–5.
71. Avanzi C, Maia RC, Benjak A, Nery JA, Sales AM, Miranda A, et al. Emergence of mycobacterium leprae rifampin resistance evaluated by whole-genome sequencing after 48 years of irregular treatment. *Antimicrob Agents Chemother*. 2020;64(7):1–13.

72. Rocha, Adalgiza da Silva, Santos, Alexandre Araujo Cunha, Pignataro, Patricia, Nery, José Augusto, Miranda, Antonio Basilio, et al. Genotyping of Mycobacterium leprae from Brazilian leprosy patients suggests the occurrence of reinfection or of bacterial population shift during disease relapse. *Journal of Medical Microbiology* (2011), 60, 1441–1446.
73. Rocha, Adalgiza da Silva, Cunha, Maria das Graças, Diniz, Lucia Martins, Salgado, Claudio, Aires, Maria Araci P. Aires, Nery, José Augusto, et al. Drug and Multidrug Resistance among Mycobacterium leprae Isolates from Brazilian Relapsed Leprosy Patients. *jcm.asm.org*. V. 50, N°6., 2012.
74. Rosa PS, D’Espindula HRS, Melo ACL, Fontes ANB, Finardi AJ, Belone AFF, et al. Emergence and Transmission of Drug-/Multidrug-resistant Mycobacterium leprae in a Former Leprosy Colony in the Brazilian Amazon. *Clin Infect Dis* [Internet]. 2020;70(10):2054–61. Available from: <http://www.embase.com/search/results?subaction=viewrecord&from=export&id=L628610476>
75. Lavania M, Singh I, Turankar RP, Ahuja M, Pathak V, Sengupta U, et al. Drug resistance patterns in Mycobacterium leprae isolates from relapsed leprosy patients attending the leprosy mission (TLM) Hospitals in India. *Lepr Rev*. 2014;85.
76. Bulstra CA, Blok DJ, Alam K, Butlin CR, Roy JC, Bowers B, et al. Geospatial epidemiology of leprosy in northwest Bangladesh: a 20-year retrospective observational study. *Infect Dis Poverty* [Internet]. 2021;10(1). Available from: <https://www.scopus.com/inward/record.uri?eid=2-s2.0-85103111775&doi=10.1186%2Fs40249-021-00817-4&partnerID=40&md5=1d7f1a97422b22ea2b527f1ab5b305ad>
77. Araújo F das CB de, Souza CNP de, Ramos EMLS, Braga RM. Aspectos associados à recidiva da hanseníase. *Rev Bras Biom*. 2015;33(1):42–50.
78. Neves KVRN, Nobre ML, Machado LMG, Steinmann P, Ignotti E. Misdiagnosis of leprosy in Brazil in the period 2003 - 2017: spatial pattern and associated factors. *Acta Trop*. 2021;215:105791.
79. Ministério da saúde (MS). Protocolo Clínico e Diretrizes Terapêuticas da Hanseníase. Ministério da Saúde Secr Vigilância em Saúde. 2021;
80. Ministério da Saúde (MS). Diretrizes para vigilância, atenção e eliminação da Hanseníase como problema de saúde pública. Ministério da Saúde Secr Vigilância em Saúde [Internet]. 2016;58p. Available from: <https://pt.scribd.com/document/323388710/Diretrizes-para-vigilancia-atencao-e-eliminacao-da-hansenia-se-como-problema-de-saude-publica-20169>.
81. Rahevar K, Morishita F, Oh KH, Islam T. Epidemiological review of leprosy in WHO’s Western Pacific Region: 1991-2019. *West Pacific Surveill response J WPSAR*. 2021;12(3):34–46.

82. World Health Organization. Global leprosy update, 2018: moving towards a leprosy. *Wkly Epidemiol Rec* [Internet]. 2019;94(35/36):389–412. Available from: <https://apps.who.int/iris/bitstream/handle/10665/326775/WER9435-36-en-fr.pdf>
83. Neves KVRN, Nobre ML, Machado LMG, Steinmann P, Ignotti E. Misdiagnosis of leprosy in Brazil in the period 2003 - 2017: spatial pattern and associated factors. *Acta Trop* [Internet]. 2021;215:105791. Available from: <https://doi.org/10.1016/j.actatropica.2020.105791>
84. Sá Ptt De. Fatores Associados À Recidiva Em Hanseníase No Brasil: Um Estudo De Caso-Controle. *Appl Microbiol Biotechnol*. 2020;2507(1):1–9.
85. Cruz RC da S, Bühner-Sékula S, Penna GO, de Moraes MEA, Gonçalves H de S, Stefani MM de A, et al. Clinical trial for uniform multidrug therapy for leprosy patients in Brazil (U-MDT/CT-BR): Adverse effects approach. *An Bras Dermatol*. 2018;93(3):377–84.
86. Pattyn SR, Groenen G, Bourland J, De Muynck A, Grillone S, Grossetete G, et al. The incubation time of relapses after treatment of multibacillary leprosy with rifampicin containing regimens. *Eur J Epidemiol*. 1988 Jun;4(2):231–4.
87. Illarramendi, Ximena et al. Baixa taxa de recidiva após poliquimioterapia de doze doses para hanseníase: um estudo de coorte de 20 anos em um centro de referência brasileiro. Rio de Janeiro, Fiocruz/IOC, 2021. PNTD-D-20-01536.
88. Kumar A, Girdhar A, Girdhar B. A randomized controlled trial to compare cure and relapse rate of paucibacillary multidrug therapy with monthly rifampicin, ofloxacin, and minocycline among paucibacillary leprosy patients in Agra District, India. *Indian J Dermatol Venereol Leprol*. 2015;81(4):356–62.
89. Melo SL, Macedo GMM de, Pires CAA, Cunha MHCM da. Recidiva hanseníase em área de alta endemicidade no Estado do Pará, Brasil. *Rev Pan-Amazônica Saúde*. 2014;5(3):19–24.
90. Diniz LM, Moreira MV, Puppim MA, Oliveira MLWDR de. Estudo retrospectivo de recidiva da hanseníase no Estado do Espírito Santo TT - Retrospective study on leprosy relapse in the State of Espírito Santo. *Rev Soc Bras Med Trop* [Internet]. 2009;42(4):420–4. Available from: http://www.scielo.br/scielo.php?script=sci_arttext&pid=S0037-86822009000400012
91. Baohong JI. Does there exist a subgroup of MB patients at greater risk of relapse after MDT? *Lepr Rev*. 2001;72(1):3–7.
92. Bühner-Sékula S, Cunha MGS, Foss NT, Oskam L, Faber WR, Klatser PR. Dipstick assay to identify leprosy patients who have an increased risk of relapse. *Trop Med Int Heal*. 2001;6(4):317–23.
93. Rada E, Duthie MS, Reed SG, Aranzazu N, Convit J. Acompanhamento sorológico de respostas de IgG contra proteínas micobacterianas recombinantes ML0405, ML2331 e LID-1 em uma área hiperendêmica de hanseníase na Venezuela. *Mem Inst Oswaldo Cruz*. 2012;107(Supl 1):S90-4.

94. Prabu R, Manickam P, Mahalingam Vn, Jayasree P, Selvaraj V, Mehendale Sm. Relapse and deformity among 2177 leprosy patients released from treatment with MDT between 2005 and 2010 in South India : A retrospective cohort study Relapse and deformity among 2177 leprosy patients released from treatment with MDT between 2005 and 2010. *Lepr Rev.* 2015;86:345–55.

95. Düppre NC, Camacho LA, Sales AM, Illarramendi X, Nery JA, Sampaio EP, et al. Impacto da Soropositividade PGL-I no Efeito Protetor da Vacinação BCG entre Contatos com Hanseníase: Um Estudo de Coorte. *PLoS Negl Trop Dis.* 2012;6:e1711.

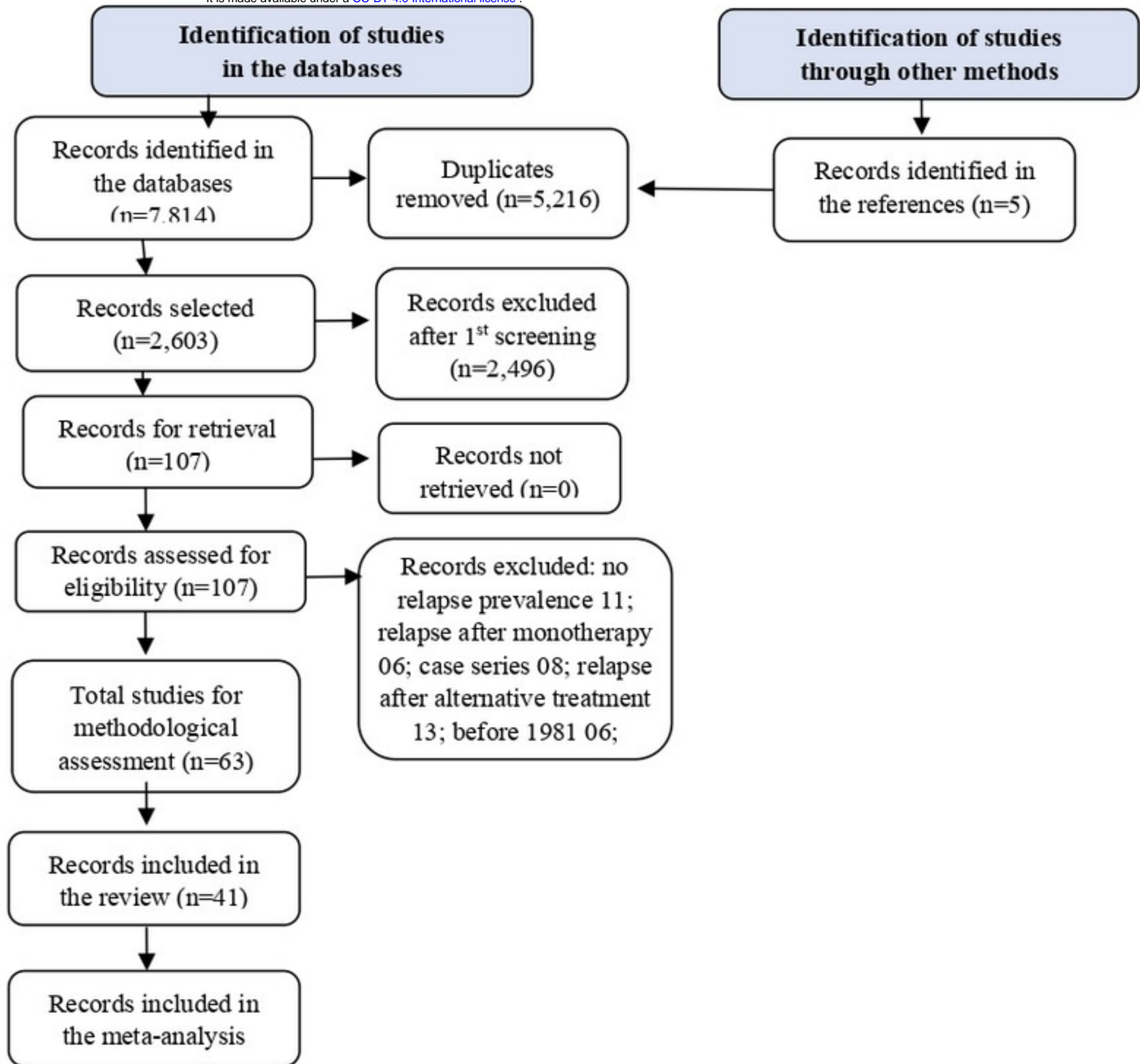


Figura01

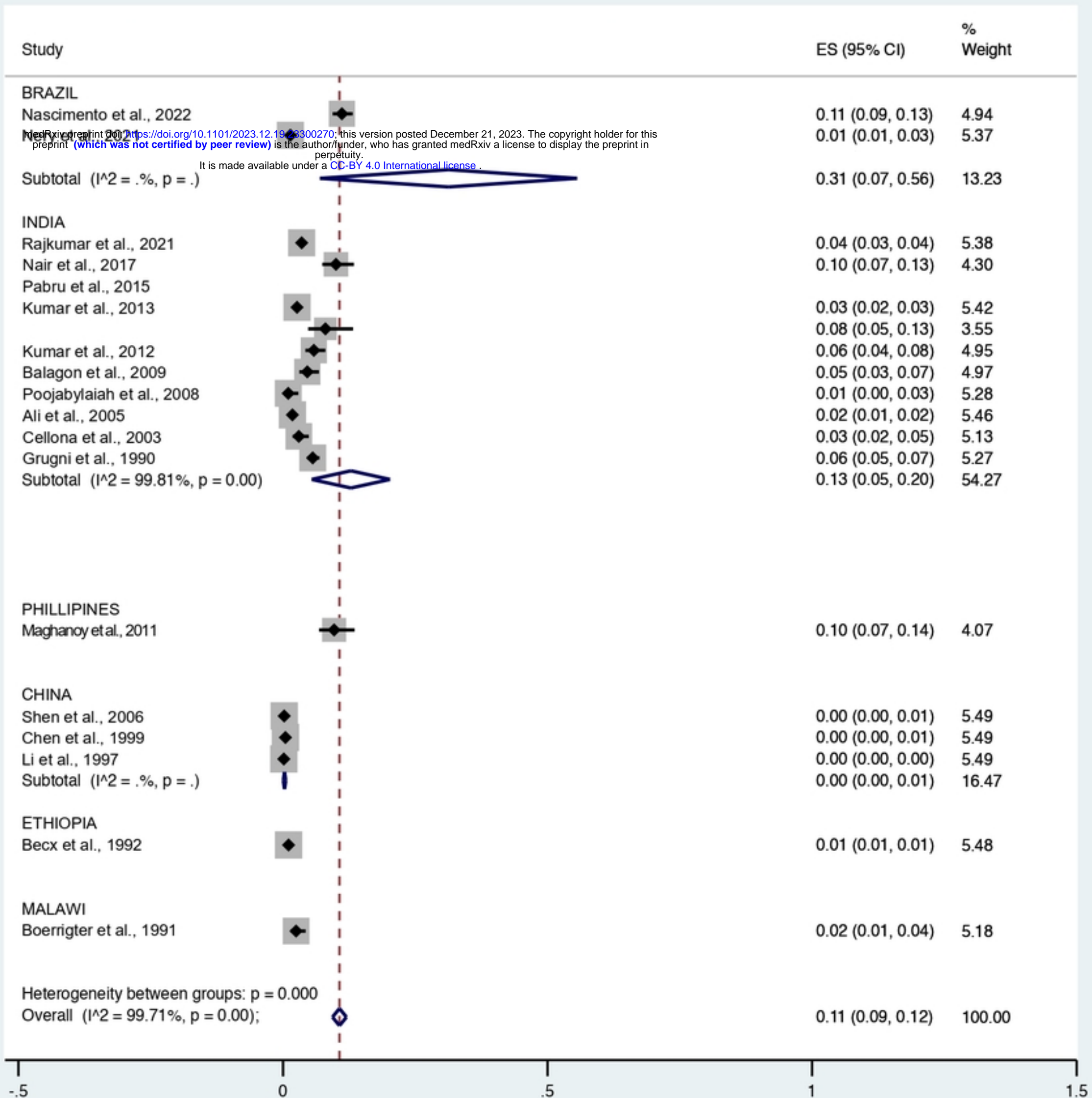


Figura02