

Fracture risk among stroke survivors

according to post-stroke disability status and stroke type

Dageong Lee, MD^{1*}, In Young Cho, MD^{1,2*}, Won Hyuk Chang, MD, PhD^{2,3}, Jung Eun Yoo, MD, PhD⁴, Hea Lim Choi, MD^{2,5}, Jun Hee Park, MD^{1,6}, Dong Wook Shin, MD, MBA, DrPH^{1,2†*}, Kyungdo Han, PhD^{7†*}

¹ Department of Family Medicine/Supportive Care Center, Samsung Medical Center, Sungkyunkwan University School of Medicine, Seoul, Republic of Korea

² Department of Clinical Research Design & Evaluation, Samsung Advanced Institute for Health Science & Technology, Sungkyunkwan University, Seoul, Republic of Korea

³ Department of Physical & Rehabilitation Medicine, Samsung Medical Center, Sungkyunkwan University School of Medicine, Seoul, Republic of Korea

⁴ Department of Family Medicine, Healthcare System Gangnam Center, Seoul National University Hospital, Seoul, Republic of Korea

⁵ Department of Family Medicine/Executive Healthcare Clinic, Severance Hospital, Yonsei University College of Medicine, Seoul, Republic of Korea

⁶ Department of Medicine, Sungkyunkwan University School of Medicine, Seoul, Republic of Korea

⁷ Department of Statistics and Actuarial Science, Soongsil University, Seoul, Republic of Korea

NOTE: This preprint reports new research that has not been certified by peer review and should not be used to guide clinical practice.

23 *These authors contributed equally.

24

25 †**Corresponding author:**

26

27 Dong Wook Shin, MD, DrPH, MBA

28 Department of Family Medicine/Supportive Care Center, Samsung Medical Center,

29 Sungkyunkwan University School of Medicine

30 Department of Clinical Research Design & Evaluation, Samsung Advanced Institute for

31 Health Science & Technology, Sungkyunkwan University

32 81 Irwon-Ro, Gangnam-gu, Seoul 06351, Republic of Korea

33 Tel: 82-2-3410-5252; Fax: 82-2-3410-0388; E-mail: dwshin.md@gmail.com

34

35 Kyungdo Han, PhD

36 Department of Statistics and Actuarial Science, Soongsil University, Seoul, Republic of

37 Korea

38 369 Sangdo-Ro, Dongjak-gu, Seoul 06978, Republic of Korea

39 Tel: 82-2-2258-7226; Fax: 82-2-532-6537; E-mail: hkd917@naver.com

40

41 Word count: 5,979 words

42 **Abstract**

43 **Background:** Stroke survivors face physical and cognitive challenges, including impaired
44 coordination and balance, which can lead to an increased dependency and a higher risk of
45 falls. We aimed to investigate the impact of post-stroke disability status and stroke type on
46 the risk of fracture at various sites compared to a matched comparison group.

47 **Method:** This retrospective cohort study used data from the Korean National Health
48 Insurance System database (2010-2018) and included a total of 223,358 stroke patients and a
49 1:1 matched comparison group. Stroke survivors were grouped based on the presence and
50 severity of their post-stroke disability and stroke type. The primary outcome was the
51 incidence of newly diagnosed fracture. Cox proportional hazard regression analyses were
52 used to calculate the hazard ratios of fractures after adjusting for potential confounders.

53 **Results:** Stroke survivors had an increased risk of overall fractures compared to the matched
54 comparison group (adjusted hazard ratio [aHR] 1.40, 95% confidence interval [CI] 1.37-1.43).
55 Specifically, the risk of hip fractures was even greater for stroke survivors: aHR 2.42, 95% CI
56 2.30-2.55. The risk of vertebral fractures (aHR 1.29, 95% CI 1.25-1.34) and other fractures
57 (aHR 1.19, 95% CI 1.15-1.23) also was higher than that of the control group. The risk of hip
58 fractures was highest among stroke survivors with severe post-stroke disability (aHR 4.82, 95%
59 CI 4.28-5.42), while the risk of vertebral or other fractures was highest among those with
60 mild post-stroke disability. There was no significant difference in fracture risk between
61 hemorrhagic and ischemic stroke survivors when stratified by disability status.

62 **Conclusion:** Our findings showed an increased risk of subsequent fractures among stroke
63 survivors, particularly those with post-stroke disability and for hip fracture. Bone health
64 assessment and treatment should be emphasized as an essential part of stroke management.

65

66 **Keywords:** stroke; fracture; disability; cohort

67

68 **Introduction**

69 According to the Global Burden of Diseases 2019, over 12.2 million new stroke
70 events occur annually¹. Stroke is the second most prevalent cause of death and the third most
71 significant contributor to disability-adjusted life years worldwide². Stroke can have a
72 significant impact on both physical and cognitive abilities³, resulting in coordination and
73 balance impairments⁴. Muscle weakness, immobility, and dependency following stroke can
74 also lead to physical impairment associated with decreased quality of life and higher
75 mortality⁵. Moreover, stroke survivors face an elevated risk of falls⁶.

76 Although these factors suggest that stroke survivors are at increased risk of fractures,
77 previous studies reported heterogeneous results (**Table S1**)⁷⁻¹⁷. For example, hip fracture risk
78 in stroke survivors compared to a non-stroke group varied across studies, with reported
79 relative risk (RR) of 1.4 to 2.4 in a Taiwanese study¹², RR 11.75 in a Swedish study¹³, and no
80 evidence of increased risk in a US study (adjusted hazard ratio [aHR] 1.1, 95% confidence
81 interval [CI] 0.6-2.1)¹⁷. In addition, previous studies primarily focused on hip^{9,12,13,15,16} or
82 overall fractures^{7,9,13}, and direct comparisons among different fracture sites were rarely
83 reported^{7,11}. The influence of severity of disability on fracture risk remains uncertain. A US
84 study⁹ found that post-stroke women with severe disability were at increased risk of hip
85 fractures (aHR 2.1, 95% CI 1.4-3.2), but a Taiwanese study⁷ showed an inverse relationship
86 between stroke severity and overall fracture (aHR for moderate vs mild stroke, 0.88; 95% CI
87 0.81-0.96, aHR for severe vs mild stroke, 0.39; 95% CI 0.34-0.44). The effect of stroke type
88 on fracture risk has also been inconsistent; some studies indicated a higher fracture risk in
89 hemorrhagic stroke compared to ischemic stroke^{18,19}, but others reported no significant
90 difference⁷. Moreover, most studies on fracture among stroke survivors failed to differentiate
91 by stroke type^{8,12,14-17}.

92 In this retrospective cohort study, we aimed to investigate the risk of fractures
93 among stroke survivors compared to a non-stroke population. We also investigated the
94 impacts of post-stroke disability and stroke type on fracture at various sites. We hypothesized
95 that stroke survivors would have a higher risk of fractures compared to the control group,
96 with the risk varying by fracture site and type of stroke. Additionally, we expected that the
97 severity of post-stroke disability would correlate with an increased fracture risk.

98

99

100 **Methods**

101 **1. Data source**

102 This study used the Korean National Health Insurance Service (KNHIS) database,
103 which includes diagnoses and prescriptions for the entire Korean population²⁰ (further details
104 in **Supplementary Methods**). Under the KNHIS, employees and all people aged 40 or above
105 are eligible for general health screening programs²¹. The KNHIS hence collects and manages
106 information on demographic factors, anthropometric measurements, health behaviors, and
107 laboratory results²⁰. This database is a valuable resource for clinical and public health
108 research²¹.

109

110 **2. Study population**

111 We identified a total of 800,646 individuals who experienced a stroke between
112 January 1, 2010, and December 31, 2018. The definition of stroke was determined by ICD-10
113 codes (**Table S2**) from hospitalization records, along with the presence of claims for brain

114 resonance imaging or brain CT scan²². We matched stroke survivors with a comparison group
115 who had no previous stroke event in a 1:1 ratio based on age and sex. The control subjects
116 were assigned an index date, which aligned with the date of stroke diagnosis for their
117 respective matched patients.

118 Among the selected stroke (n=800,646) and comparison (n=800,646) groups, we
119 included those who underwent a national health check-up within two years of the index year
120 (n=465,257 and n=391,878) to retrieve baseline information on health behaviors and
121 comorbidities. We excluded individuals who were younger than 40 years (n=6,719 and
122 n=8,300) to analyze a population at risk for fractures, our outcome of interest. We also
123 excluded participants with a previous diagnosis of fracture (n=62,858 and 59,785) or missing
124 data on covariates (n=13,036 and 13,713) and applied a 1-year lag (n=29,418 and 4,809). The
125 1-year lag was introduced to examine the risk of fracture after the stroke has stabilized and to
126 exclude fractures that may occur during the acute stroke phase. In total, 223,358 were
127 included in the stroke group and 322,161 in the comparison group (**Figure 1**). This study was
128 approved by the Institutional Review Board of Samsung Medical Center (IRB No. 2020-12-
129 068).

130

131 **3. Definition of disability and its severity caused by stroke**

132 We used data from Korea's National Disability Registration System (KNDRS) to
133 determine post-stroke disability status and severity (further details in **Supplementary**
134 **Methods**). Disability status and severity information from the KNDRS can be considered
135 reliable and accurate. Grade 1 (most severe) disability from brain injury was defined by the
136 requirement of total assistance from others, whereas grade 6 (least severe) disability was

137 defined by the performance of ordinary activities independently according to predefined
138 eligibility criteria (**Table S3**)²³. For the analyses, we classified grades 1 to 3 as severe
139 disability and grades 4 to 6 as mild disability.

140

141 **4. Study outcomes and follow-up**

142 The primary outcome of this study was a newly diagnosed fracture, determined by
143 ICD-10 codes²⁴ (**Table S4**). Hip fracture was defined with the relevant diagnosis codes;
144 vertebral and other fractures were defined by two or more outpatient visits with the relevant
145 diagnosis codes within a 12-month period. “Overall fracture” refers to the occurrence of at
146 least one of the above-mentioned fractures. The study population was followed until the
147 occurrence of a new fracture, censor date, or the end of the study period (December 31, 2018),
148 whichever came first.

149

150 **5. Covariates**

151 Sociodemographic information such as age, sex, residential area, and income level
152 was obtained from the KNHIS database. Data on lifestyle behaviors (smoking, alcohol
153 consumption, and physical activity), anthropometric measurements, and laboratory test
154 results were extracted from the general health screening examinations.

155 Comorbidities of the participants were identified using claims and prescription
156 information prior to the index date (further details in **Supplementary Methods**).

157

158 **6. Statistical analysis**

159 Descriptive analysis was conducted using mean \pm standard deviation (SD) for
160 continuous variables and number (percentage) for categorical variables. Cox proportional
161 hazards regression analysis was performed to calculate the hazard ratio (HR) and 95% CI for
162 fracture risk among stroke survivors compared to the matched comparison group, with
163 adjustment for potential confounders during years of follow-up. Model 1 was unadjusted, and
164 model 2 was adjusted for age (continuous), sex, area of residence (urban, rural), insulin use,
165 diabetes mellitus (DM), hypertension, dyslipidemia, smoking (none, ex, current), alcohol
166 consumption (non, mild, heavy), and body mass index (BMI) (continuous). In addition,
167 individuals with stroke were categorized into three groups: (1) stroke without disability, (2)
168 stroke with mild disability (grades 4–6), and (3) stroke with severe disability (grades 1–3).
169 We conducted Kaplan-Meier analyses to demonstrate the cumulative incidence probabilities
170 of fracture.

171 All statistical analyses were conducted using SAS version 9.4 (SAS Institute Inc.,
172 Cary, NC, USA). Two-sided P-values <0.05 were considered statistically significant.

173

174

175 **Results**

176 **1. Baseline characteristics**

177 Among 223,358 stroke survivors, the mean age was 64.8 ± 10.9 years, and 61.2%
178 were male (**Table 1**). Stroke survivors were more likely to reside in rural areas and had lower
179 incomes than the control group. Compared to the control group, a higher percentage of stroke

180 survivors were current smokers (26.1% versus 17.6%), heavy drinkers (8.3% versus 6.7%),
181 and had a higher BMI. Stroke survivors were more likely to have higher Charlson
182 Comorbidity Index scores, and a higher prevalence of DM, hypertension, and dyslipidemia.

183 Among 26,932 stroke survivors with post-stroke disability, the mean age was $66.5 \pm$
184 10.0 years, and 64.0% were male. Stroke survivors with post-stroke disability had lower
185 incomes and a higher BMI than those without post-stroke disability. Stroke survivors with
186 disability had higher Charlson Comorbidity Index scores than those without post-stroke
187 disability, and a higher prevalence of DM and hypertension.

188

189 **2. Risk of subsequent fracture among people with stroke according to post-stroke** 190 **disability**

191 The mean \pm SD follow-up period for stroke survivors was 3.7 ± 2.5 years, with an
192 average 2.7 ± 2.0 years between stroke and new-onset fracture. The comparison group had a
193 mean \pm SD follow-up period of 4.2 ± 2.5 years. The Kaplan-Meier curves are shown in
194 **Figure 2**.

195 Stroke survivors had a higher risk of overall fracture (aHR 1.40, 95% CI 1.37-1.43)
196 than the comparison group after adjusting for potential confounders (**Table 2**). Stroke
197 survivors with post-stroke disability had an increased risk of overall fractures (aHR 1.69, 95%
198 CI 1.62-1.76). Stroke survivors without post-stroke disability also had a higher risk of overall
199 fractures compared to the comparison group (aHR 1.36, 95% CI 1.33-1.39).

200 Stroke survivors exhibited a higher risk of vertebral fracture (aHR 1.29, 95% CI
201 1.25-1.34) compared to the comparison group (**Table 2**). There was a slight difference in

202 vertebral fracture risk by post-stroke disability status (aHR 1.39, 95% CI 1.29-1.48 vs. aHR
203 1.28, 95% CI 1.24-1.33). Furthermore, among post-stroke disability, those with mild
204 disability had a higher risk of vertebral fracture (aHR 1.48, 95% CI 1.36-1.60) compared to
205 those with severe disability (aHR 1.19, 95% CI 1.05-1.35).

206 Stroke survivors had a higher risk of hip fracture (aHR 2.42, 95% CI 2.30-2.55)
207 compared to the comparison group. Furthermore, stroke survivors with post-stroke disability
208 had an even greater risk of hip fracture (aHR 3.83, 95% CI 3.54-4.15) compared to those
209 without post-stroke disability (aHR 2.22, 95% CI 2.10-2.35). Moreover, those with severe
210 disability had a significantly higher risk of hip fracture (aHR 4.82, 95% CI 4.28-5.42)
211 compared to those with mild post-stroke disability (aHR 3.38, 95% CI 3.06-3.73).

212

213 **3. Fracture risk according to type of stroke**

214 We compared the risk of fracture between ischemic and hemorrhagic stroke after
215 stratifying by post-stroke disability status (**Table 3**). No significant difference was found in
216 the risk of overall fracture between the ischemic and hemorrhagic types: 1.36 (1.33-1.40) vs.
217 1.33 (1.28-1.39) in survivors without post-stroke disability and 1.67 (1.59–1.75) vs. 1.76
218 (1.62-1.92) with post-stroke disability. However, the risk for vertebral fractures was higher in
219 ischemic stroke survivors compared to hemorrhagic stroke survivors in both strata: without
220 disability (aHR 1.32, 95% CI 1.27-1.36; aHR 1.14, 95% CI 1.07-1.22, respectively) and with
221 disability (aHR 1.46, 95% CI 1.35-1.57; aHR 1.13, 95% CI 0.97-1.33, respectively). The risk
222 of hip fracture was higher for hemorrhagic stroke survivors than ischemic stroke survivors in
223 only those with post-stroke disability (aHR 5.34, 95% CI 4.62-6.16; aHR 3.48, 95% CI 3.18-
224 3.81, respectively).

225

226

227 **Discussion**

228 In our large-scale study, stroke survivors had a 1.40 times increased risk of overall
229 fracture compared to the comparison group after adjusting for potential confounders. Among
230 the fracture sites, hip fractures showed the largest risk among stroke survivors (2.42 times)
231 compared to vertebral or other fractures (1.29 and 1.19 times). Stroke survivors with post-
232 stroke disability showed a higher risk than those who did not have post-stroke disability, and
233 severe disability was associated with an even higher hip fracture risk (4.82 times). There was
234 no difference in fracture risk between ischemic and hemorrhagic stroke when post-stroke
235 disability status was accounted for, except for vertebral fractures which showed higher risk in
236 ischemic stroke survivors.

237 The increased risk of fractures in stroke survivors can be attributed to decreased
238 bone mineral density (BMD) and increased susceptibility to falls following stroke. Bone loss
239 after stroke is presumed to be primarily due to immobilization and increased bone turnover.
240 When the skeleton is not subjected to enough mechanical loading, osteoblast activity
241 decreases, leading to reduced bone synthesis²⁵. In a previous study, BMD in the paretic lower
242 limb decreased by 10% among non-ambulatory patients, but only 3% among ambulatory
243 patients²⁶. Stroke survivors, even those with mild symptoms are reported to have reduced
244 physical activity²⁷. Post-stroke falls typically occur during mobilization²⁸, and stroke
245 survivors face an increased risk during basic activities like transferring to and from the bed,
246 chair, and toilet²⁹.

247 Our study found that stroke survivors had a higher risk of both hip and vertebral

248 fractures compared to the control group, but the risk was higher for hip vs. vertebral fracture.
249 As most hip fracture are caused by falls³⁰, the increased occurrence of hip fractures in the
250 stroke group could potentially be attributed to falls resulting from diminished balance⁶. Also,
251 the decreased mobility observed in stroke patients may lead to decreased BMD in the hip and
252 subsequent increase in hip fracture risk because the hip bone is particularly sensitive to
253 weight-bearing²⁶. In contrast, vertebral fractures are commonly associated with osteoporosis
254 (i.e. compression fracture)³¹ but less frequently associated with falls compared to hip
255 fractures³².

256 Prior studies have shown that there is a significant loss of total body BMD,
257 including hip, but not in vertebrae after a severe stroke³³. This may be because those with
258 severe disability spend a significant amount of time lying down⁵, leading to reduced weight-
259 bearing activity, which can contribute to greater hip BMD loss²⁶. Meanwhile, those with mild
260 disability are able to perform daily activities independently and may require only occasional
261 assistance from others²³; hence, they have a relatively lower risk of falls and are likely to
262 remain active, and thus are at higher risk of vertebral fractures, which are attributed more to
263 osteoporosis compared to hip fractures³¹. In addition, vertebral fractures were identified
264 through claims data in our study, requiring visit to a hospital. Stroke survivors with mild
265 disability may be more susceptible to experiencing vertebral fracture symptoms compared to
266 those with severe disability, and make hospital visits to investigate the cause and be
267 diagnosed with vertebral fractures. In contrast, stroke survivors with severe disability who
268 have limited access to health care may be less likely to seek medical care for minor injuries
269 such as vertebral fractures. People with functional or mental disabilities have difficulty
270 accessing healthcare³⁴.

271 There was no significant difference in the overall fracture risk between ischemic and
272 hemorrhagic stroke. This is consistent with the results of a recent longitudinal study in
273 Taiwan, which reported that the overall fracture risk did not differ between ischemic and
274 hemorrhagic stroke as the reference (aHR 1.08, 95% CI 0.92-1.16)⁷. However, when
275 assessing site-specific fractures, the risk of vertebral fracture was slightly higher in ischemic
276 stroke survivors with post-stroke disability and without post-stroke disability, while the risk
277 of hip fracture was higher in hemorrhagic stroke survivors with post-stroke disability. This
278 finding aligns with a Taiwanese study, where hemorrhagic stroke was associated with higher
279 risk of hip fracture (aHR 2.34, 95% CI 1.33-4.11) compared with ischemic stroke (aHR 1.60,
280 95% CI 1.36-1.89)¹⁸. The underlying reasons for these differential risks of vertebral and hip
281 fractures in ischemic and hemorrhagic stroke survivors remain unclear. However, previous
282 research suggests that, compared with ischemic stroke, hemorrhagic strokes are more severe³⁵,
283 and thus greater impaired motor function and bone loss due to immobilization may account
284 for the higher risk of hip fracture in hemorrhagic stroke with post-stroke disability¹⁸.

285 Our study has important clinical implications. Delayed rehabilitation of stroke
286 survivors is a risk factor for fracture³⁶. Moreover, fractures can result in further functional
287 decline, disrupt stroke rehabilitation, and elevate the risk of subsequent stroke^{37,38}. The
288 American Heart Association/American Stroke Association and guidelines for adult stroke
289 rehabilitation and recovery recommend a formal fall prevention program during
290 hospitalization for stroke survivors, and that stroke patients discharged to the community
291 participate in exercise programs with balance training to reduce falls³⁹. A previous study
292 demonstrated reduced fracture risk with regular exercise following acute stroke⁴⁰. In addition,
293 it is necessary to conduct examinations and implement preventive treatments for increased
294 bone resorption, which appears to play a significant role in osteoporosis among patients who

295 have experienced prolonged bedridden periods due to immobility⁴¹. Our study findings
296 highlight the importance of fracture risk prevention among stroke survivors, which may be
297 accomplished by not only fall risk assessments, exercise, and balance training programs³⁹, but
298 also by supplementation of calcium and vitamin D⁴² and osteoporosis medications⁴³.

299 This study possesses several strengths, including the utilization of a representative
300 sample obtained from a national database. The substantial number of stroke cases enabled a
301 comprehensive examination of the impact of stroke severity, an aspect often overlooked in
302 prior research. Moreover, stroke severity was defined using a disability grade determined by
303 the Modified Barthel Index, which was validated by specialists. Additionally, the availability
304 of diverse demographic and clinical information facilitated adjustment for confounders in our
305 Cox regression analysis, enhancing the robustness of our findings.

306 Despite the strength and clinical implication of our study, there are certain
307 limitations to acknowledge. First, the analysis did not consider the specific lesion site of
308 stroke as the ICD-10 codes or KNDRS used in this study do not distinguish different lesion
309 sites. Stroke location affects clinical outcomes⁴⁴, and future studies should identify the
310 specific lesion site to help identify stroke survivors more vulnerable to fracture risk. Second,
311 given that the definition of fractures relied on claims data using ICD-10 codes, there is a
312 possibility of under detection of fractures, especially for vertebral fractures. Third, because
313 we used an established public database, we were unable to analyze several factors, including
314 the cause of fractures, family history of fracture, BMD, balance or cognitive impairment, or
315 antithrombotic medication status, which may affect fracture risk. Future research should
316 focus on identifying the impact of these factors on fracture risk among stroke survivors.
317 Furthermore, our study participants were restricted to those who received health screening

318 examinations, potentially representing a cohort that is healthier and more engaged in healthy
319 lifestyles compared to the general population. Finally, the use of a single-country database
320 limits the generalizability of our study to other populations due to differences in medical
321 treatment approaches that may differ by local practice guidelines and healthcare systems,
322 cultural environments, and ethnicity⁴⁵.

323 In summary, our study showed that stroke survivors had a 1.4-fold increased risk of
324 overall fracture and a 2.4-fold increased risk of hip fracture. These risks were further elevated
325 among individuals with post-stroke disability. When stratifying by post-stroke disability
326 status, no significant difference was observed between ischemic and hemorrhagic stroke for
327 overall fracture risk. Fall prevention and comprehensive bone health management should be
328 prioritized in the care of stroke survivors.

329

330

331

332 **Acknowledgements**

333 The authors thank Da-Hyeun Lee and Sang-Eun Lee for the graphical abstract.

334

335 **Funding**

336 None

337

338 **Conflicts of interest**

339 The authors have no relevant conflicts of interest to declare.

340

341 **Author contributions**

342 D.L. drafted and revised the article. I.Y.C. and D.W.S. interpreted the data and contributed to
343 the study conception and design. K.H. was involved in data acquisition and statistical analysis.

344 W.H.C., J.E.Y., H.L.C., and J.H.P. revised manuscript. All authors read and agreed to the final
345 manuscript.

346

347 **Data Availability Statement**

348 The KNHIS database is open to researchers whose study protocols are approved by the
349 official review committee.

350

351 **Supplemental Material**

352 Supplementary Methods

353 Tables S1-S4

354

355

356 **References**

- 357 1. Feigin VL, Brainin M, Norrving B, Martins S, Sacco RL, Hacke W, Fisher M, Pandian J,
358 Lindsay P. World Stroke Organization (WSO): global stroke fact sheet 2022. *International*
359 *Journal of Stroke*. 2022;17:18-29.
- 360 2. Feigin VL, Stark BA, Johnson CO, Roth GA, Bisignano C, Abady GG, Abbasifard M, Abbasi-
361 Kangevari M, Abd-Allah F, Abedi V. Global, regional, and national burden of stroke and its
362 risk factors, 1990–2019: a systematic analysis for the Global Burden of Disease Study 2019.
363 *The Lancet Neurology*. 2021;20:795-820.
- 364 3. Viktorisson A, Andersson EM, Lundström E, Sunnerhagen KS. Levels of physical activity
365 before and after stroke in relation to early cognitive function. *Scientific Reports*. 2021;11:1-
366 7.
- 367 4. Han P, Zhang W, Kang L, Ma Y, Fu L, Jia L, Yu H, Chen X, Hou L, Wang L. Clinical evidence
368 of exercise benefits for stroke. *Exercise for Cardiovascular Disease Prevention and*
369 *Treatment: From Molecular to Clinical, Part 2*. 2017:131-151.
- 370 5. Dalvandi A, Heikkilä K, Maddah S, Khankeh H, Ekman S-L. Life experiences after stroke
371 among Iranian stroke survivors. *International nursing review*. 2010;57:247-253.
- 372 6. Dennis M, Lo K, McDowall M, West T. Fractures after stroke: frequency, types, and
373 associations. *Stroke*. 2002;33:728-734.
- 374 7. Wang H-P, Sung S-F, Yang H-Y, Huang W-T, Hsieh C-Y. Associations between stroke type,
375 stroke severity, and pre-stroke osteoporosis with the risk of post-stroke fracture: A
376 nationwide population-based study. *Journal of the Neurological Sciences*. 2021;427:117512.
- 377 8. Tanislav C, Kostev K. Factors associated with fracture after stroke and TIA: a long-term
378 follow-up. *Osteoporosis International*. 2020;31:2395-2402.
- 379 9. Northuis CA, Crandall CJ, Margolis KL, Diem SJ, Ensrud KE, Lakshminarayan K. Association
380 between post-stroke disability and 5-year hip-fracture risk: The Women's Health Initiative.
381 *Journal of Stroke and Cerebrovascular Diseases*. 2020;29:104976.
- 382 10. Kapral MK, Fang J, Alibhai SM, Cram P, Cheung AM, Casaubon LK, Prager M, Stamplecoski
383 M, Rashkovan B, Austin PC. Risk of fractures after stroke: results from the Ontario Stroke
384 Registry. *Neurology*. 2017;88:57-64.
- 385 11. Benzinger P, Rapp K, König H, Bleibler F, Globas C, Beyersmann J, Jaensch A, Becker C,
386 Büchele G. Risk of osteoporotic fractures following stroke in older persons. *Osteoporosis*
387 *International*. 2015;26:1341-1349.
- 388 12. Lin HL, Lin HC, Tseng YF, Liao HH, Worly J, Pan CY, Hsu CY. Hip fracture after first-ever
389 stroke: a population-based study. *Acta Neurologica Scandinavica*. 2015;131:158-163.
- 390 13. Sannerby U, Melhus H, Gedeberg R, Byberg L, Garmo H, Ahlbom A, Pedersen NL,
391 Michaëlsson K. Cardiovascular diseases and risk of hip fracture. *Jama*. 2009;302:1666-1673.
- 392 14. Brown DL, Morgenstern LB, Majersik JJ, Kleerekoper M, Lisabeth LD. Risk of fractures after

- 393 stroke. *Cerebrovascular Diseases*. 2008;25:95-99.
- 394 15. Kanis J, Oden A, Johnell O. Acute and long-term increase in fracture risk after
395 hospitalization for stroke. *Stroke*. 2001;32:702-706.
- 396 16. Ramnemark A, Nyberg L, Borssén B, Olsson T, Gustafson Y. Fractures after stroke.
397 *Osteoporosis International*. 1998;8:92-95.
- 398 17. Melton Iii L, Brown Jr R, Achenbach S, O'Fallon W, Whisnant J, Whisnant J. Long-term
399 fracture risk following ischemic stroke: a population-based study. *Osteoporosis*
400 *international*. 2001;12:980-986.
- 401 18. Zheng J-Q, Lai H-J, Zheng C-M, Yen Y-C, Lu K-C, Hu C-J, Lee H-H, Wang Y-H. Association
402 of stroke subtypes with risk of hip fracture: a population-based study in Taiwan. *Archives*
403 *of osteoporosis*. 2017;12:1-8.
- 404 19. Lisabeth LD, Morgenstern LB, Wing JJ, Sanchez BN, Zahuranec DB, Skolarus LE, Burke JF,
405 Kleerekoper M, Smith MA, Brown DL. Poststroke fractures in a bi-ethnic community.
406 *Journal of Stroke and Cerebrovascular Diseases*. 2012;21:471-477.
- 407 20. Cheol Seong S, Kim Y-Y, Khang Y-H, Heon Park J, Kang H-J, Lee H, Do C-H, Song J-S,
408 Hyon Bang J, Ha S. Data resource profile: the national health information database of the
409 National Health Insurance Service in South Korea. *International journal of epidemiology*.
410 2017;46:799-800.
- 411 21. Shin DW, Cho J, Park JH, Cho B. National General Health Screening Program in Korea:
412 history, current status, and future direction. *Precision and Future Medicine*. 2022;6:9-31.
- 413 22. Jeong S-M, Lee HR, Han K, Jeon KH, Kim D, Yoo JE, Cho MH, Chun S, Lee SP, Nam K-W.
414 Association of change in alcohol consumption with risk of ischemic stroke. *Stroke*.
415 2022;53:2488-2496.
- 416 23. Kim M, Jung W, Kim SY, Park JH, Shin DW. The Korea National Disability Registration
417 System. *Epidemiology and Health*. 2023:e2023053.
- 418 24. Yoo JE, Shin DW, Han K, Kim D, Yoon JW, Lee D-Y. Association of female reproductive
419 factors with incidence of fracture among postmenopausal women in Korea. *JAMA network*
420 *open*. 2021;4:e2030405-e2030405.
- 421 25. Yuan Y, Chen X, Zhang L, Wu J, Guo J, Zou D, Chen B, Sun Z, Shen C, Zou J. The roles of
422 exercise in bone remodeling and in prevention and treatment of osteoporosis. *Progress in*
423 *Biophysics and Molecular Biology*. 2016;122:122-130.
- 424 26. Jørgensen L, Jacobsen B, Wilsgaard T, Magnus J. Walking after stroke: does it matter?
425 Changes in bone mineral density within the first 12 months after stroke. A longitudinal
426 study. *Osteoporosis international*. 2000;11:381-387.
- 427 27. Hildebrand M, Brewer M, Wolf T. The impact of mild stroke on participation in physical
428 fitness activities. *Stroke research and treatment*. 2012;2012.
- 429 28. Chaiwanichsiri D, Jiamworakul A, Kitisomprayoonkul W. Falls among stroke patients in Thai
430 Red Cross rehabilitation center. *Journal of the Medical Association of Thailand*

- 431 *Chotmaihet Thangphaet*. 2006;89:S47-52.
- 432 29. Wada N, Sohmiya M, Shimizu T, Okamoto K, Shirakura K. Clinical analysis of risk factors for
433 falls in home-living stroke patients using functional evaluation tools. *Archives of physical*
434 *medicine and rehabilitation*. 2007;88:1601-1605.
- 435 30. LeBlanc KE, Muncie Jr HL, LeBlanc LL. Hip fracture: diagnosis, treatment, and secondary
436 prevention. *American family physician*. 2014;89:945-951.
- 437 31. Genant HK, Cooper C, Poor G, Reid I, Ehrlich G, Kanis J, Nordin BC, Barrett-Connor E, Black
438 D, Bonjour J. Interim report and recommendations of the World Health Organization task-
439 force for osteoporosis. *Osteoporosis international*. 1999;10:259.
- 440 32. Vieira ER, Palmer RC, Chaves PH. Prevention of falls in older people living in the
441 community. *Bmj*. 2016;353.
- 442 33. Ramnemark A, Nyberg L, Lorentzon R, Englund U, Gustafson Y. Progressive
443 hemiosteoporosis on the paretic side and increased bone mineral density in the
444 nonparetic arm the first year after severe stroke. *Osteoporosis International*. 1999;9:269-
445 275.
- 446 34. Krahn GL, Walker DK, Correa-De-Araujo R. Persons with disabilities as an unrecognized
447 health disparity population. *American journal of public health*. 2015;105:S198-S206.
- 448 35. Andersen KK, Olsen TS, Dehlendorff C, Kammergaard LP. Hemorrhagic and ischemic
449 strokes compared: stroke severity, mortality, and risk factors. *Stroke*. 2009;40:2068-2072.
- 450 36. Waring J, Bishop S, Marshall F. A qualitative study of professional and carer perceptions of
451 the threats to safe hospital discharge for stroke and hip fracture patients in the English
452 National Health Service. *BMC health services research*. 2016;16:1-14.
- 453 37. Huo K, Hashim SI, Yong KL, Su H, Qu Q-M. Impact and risk factors of post-stroke bone
454 fracture. *World journal of experimental medicine*. 2016;6:1.
- 455 38. Lamo-Espinosa JM, Mariscal G, Gómez-Álvarez J, San-Julián M. Incidence and risk factors
456 for stroke after hip fracture: a meta-analysis. *Scientific Reports*. 2023;13:17618.
- 457 39. Tsao CW, Aday AW, Almarzooq ZI, Alonso A, Beaton AZ, Bittencourt MS, Boehme AK,
458 Buxton AE, Carson AP, Commodore-Mensah Y. Heart disease and stroke statistics—2022
459 update: a report from the American Heart Association. *Circulation*. 2022;145:e153-e639.
- 460 40. Cheon Dy, Han K-D, Lee JH, Yu K-H, Choi BY, Lee M. Impact of changes in physical activity
461 and incident fracture after acute ischemic stroke. *Scientific Reports*. 2023;13:16715.
- 462 41. Eimori K, Endo N, Uchiyama S, Takahashi Y, Kawashima H, Watanabe K. Disrupted bone
463 metabolism in long-term bedridden patients. *PLoS One*. 2016;11:e0156991.
- 464 42. Gittler M, Davis AM. Guidelines for adult stroke rehabilitation and recovery. *Jama*.
465 2018;319:820-821.
- 466 43. Poole KE, Loveridge N, Rose CM, Warburton EA, Reeve J. A single infusion of zoledronate
467 prevents bone loss after stroke. *Stroke*. 2007;38:1519-1525.
- 468 44. Cheng B, Forkert ND, Zavaglia M, Hilgetag CC, Golsari A, Siemonsen S, Fiehler J, Pedraza S,

- 469 Puig J, Cho T-H. Influence of stroke infarct location on functional outcome measured by
470 the modified rankin scale. *Stroke*. 2014;45:1695-1702.
- 471 45. Cauley JA. Defining ethnic and racial differences in osteoporosis and fragility fractures.
472 *Clinical Orthopaedics and Related Research®*. 2011;469:1891-1899.
- 473
- 474

475 **Figure Legends**

476 Figure 1. Flowchart of the study population

477

478 Figure 2. Kaplan-Meier curves displaying the estimated incidence probability of overall

479 fracture

480 A, Risk of overall fracture in stroke survivors and control group; B, Risk of overall fracture in

481 stroke by severity of disability

482

483 **Table 1.** Baseline characteristics of the study population

	Study population			Stroke survivors		
	Matched controls (N= 322,161)	Stroke survivors (N= 223,358)	P-value	Without post-stroke disability (N= 196,426)	With post-stroke disability (N= 26,932)	P-value
Mean age, years	65.2 ± 11.2	64.8 ± 10.9	<0.001	64.6 ± 11.0	66.5 ± 10.0	<0.001
Sex, male	197,357 (61.3)	136,623 (61.2)	0.5	19,400 (60.8)	17,223 (64.0)	<0.001
Smoking			<0.001			<0.001
Non-smoker	192,161 (59.7)	124,483 (55.7)		109,232 (55.6)	15,251 (56.6)	
Ex-smoker	73,321 (22.8)	40,633 (18.2)		35,687 (18.2)	4,946 (18.4)	
Current smoker	56,679 (17.6)	58,242 (26.1)		51,507 (26.2)	6,735 (25.0)	
Alcohol consumption			<0.001			<0.001
Non	198,336 (61.6)	136,167 (61.0)		118,718 (60.4)	17,449 (64.8)	
Mild	102,170 (31.7)	68,701 (30.8)		61,347 (31.2)	7,354 (27.3)	
Heavy	21,655 (6.7)	18,490 (8.3)		51,507 (26.2)	6,735 (25.0)	
Regular physical activity	72,905 (22.6)	42,941 (19.2)	<0.001	38,147 (19.42)	4,794 (17.8)	<0.001
Anthropometrics						
Body mass index, kg/m ²	24.1 ± 3.1	24.3 ± 3.2	<0.001	24.3 ± 3.1	24.6 ± 3.3	<0.001
Waist circumference, cm	83.1 ± 8.5	84.0 ± 8.6	<0.001	83.8 ± 8.6	85.1 ± 8.7	<0.001
Systolic BP, mmHg	127.0 ± 15.3	131.8 ± 17.4	<0.001	131.7 ± 17.34	132.5 ± 17.4	<0.001
Diastolic BP, mmHg	77.3 ± 9.8	80.2 ± 11.3	<0.001	80.2 ± 11.3	80.3 ± 11.2	<0.001
Comorbidity						
Hypertension	164,380 (51.0)	171,966 (77.0)	<0.001	149,710 (76.2)	22,256 (82.6)	<0.001
Diabetes Mellitus	60,105 (18.7)	67,565 (30.3)	<0.001	58,293 (29.7)	9,272 (34.4)	<0.001
Dyslipidemia	114,553 (35.6)	158,225 (70.8)	<0.001	139,603 (71.1)	18,622 (69.1)	<0.001
Laboratory findings						
Glucose, fasting, mg/dL	103.8 ± 26.2	110.6 ± 37.8	<0.001	110.4 ± 37.7	132.5 ± 17.4	<0.001
eGFR, mL/min/1.73 m ²	85.0 ± 42.4	83.7 ± 40.4	<0.001	83.8 ± 40.4	83.3 ± 40.4	<0.001
Total cholesterol, mg/dL	194.5 ± 38.3	198.2 ± 40.8	<0.001	198.5 ± 40.8	195.8 ± 41.3	<0.001
Urban residency	141,212 (43.8)	89,610 (40.1)	<0.001	79,442 (40.4)	101,68 (37.7)	<0.001
Income of lowest 25%	61,013 (19.0)	48,564 (21.7)	<0.001	41,902 (21.3)	6,662 (24.7)	<0.001
Charlson comorbidity index	1.8 ± 1.9	4.3 ± 2.4	<0.001	4.3 ± 2.3	4.8 ± 2.5	<0.001
Follow-up duration, years	4.2 ± 2.5	3.7 ± 2.5	<0.001	3.7 ± 2.5	3.7 ± 2.5	<0.001

484 Data are expressed as mean ± standard deviation or number (%); BP, blood pressure; eGFR, estimated glomerular filtration rate.

485 **Table 2.** Fracture risks among stroke survivors compared to matched controls and according to post-stroke disability

	Number	Event number (n)	IR per 1,000 person- years	Model 1 (Crude) HR (95% CI)	Model 2 aHR (95% CI)
Overall fracture					
Matched comparison group	322,161	20,398	15.1	1 (ref.)	1 (ref.)
Stroke survivors	223,358	16,344	19.7	1.31 (1.28, 1.34)	1.40 (1.37, 1.43)
No post-stroke disability	196,426	13,885	19.0	1.27 (1.24, 1.30)	1.36 (1.33, 1.39)
Post-stroke Disability	26,932	2,459	24.4	1.63 (1.56, 1.70)	1.69 (1.62, 1.76)
Mild post-stroke disability	17,544	1,659	24.8	1.65 (1.57, 1.74)	1.67 (1.58, 1.75)
Severe post-stroke disability	9,388	800	23.6	1.57 (1.47, 1.69)	1.73 (1.61, 1.86)
Vertebral fracture					
Matched comparison group	322,161	9,797	7.1	1 (ref.)	1 (ref.)
Stroke survivors	223,358	6,952	8.1	1.16 (1.12, 1.19)	1.29 (1.25, 1.34)
No post-stroke disability	196,426	6,009	8.0	1.14 (1.11, 1.18)	1.28 (1.24, 1.33)
Post-stroke Disability	26,932	943	9.0	1.28 (1.20, 1.37)	1.39 (1.29, 1.48)
Mild post-stroke disability	17,544	691	9.9	1.42 (1.31, 1.53)	1.48 (1.36, 1.60)
Severe post-stroke disability	9,388	252	7.1	1.01 (0.89, 1.15)	1.19 (1.05, 1.35)
Hip fracture					
Matched comparison group	322,161	3,102	2.2	1 (ref.)	1 (ref.)
Stroke survivors	223,358	4,027	4.7	2.14 (2.04, 2.24)	2.42 (2.30, 2.55)
No post-stroke disability	196,426	3,223	4.2	1.95 (1.86, 2.05)	2.22 (2.10, 2.35)
Post-stroke Disability	26,932	804	7.6	3.50 (3.23, 3.78)	3.83 (3.54, 4.15)
Mild post-stroke disability	17,544	488	7.0	3.18 (2.89, 3.50)	3.38 (3.06, 3.73)
Severe post-stroke disability	9,388	316	9.0	4.13 (3.68, 4.64)	4.82 (4.28, 5.42)
Other fracture					
Matched comparison group	322,161	8,933	6.5	1 (ref.)	1 (ref.)
Stroke survivors	223,358	6,609	7.7	1.20 (1.16, 1.24)	1.19 (1.15, 1.23)
No post-stroke disability	196,426	5691	7.6	1.17 (1.14, 1.21)	1.16 (1.12, 1.21)
Post-stroke Disability	26,932	918	8.8	1.36 (1.27, 1.45)	1.36 (1.27, 1.45)

Mild post-stroke disability	17,544	635	9.1	1.42 (1.31, 1.53)	1.39 (1.28, 1.51)
Severe post-stroke disability	9,388	283	8.0	1.24 (1.10, 1.40)	1.29 (1.14, 1.45)

486 IR, incidence rate; HR, hazard ratio; CI, confidence interval

487 Model 2: adjusted for age, sex, area of residence, insulin, diabetes mellitus, hypertension, dyslipidemia, smoking, alcohol consumption, and body mass index

488

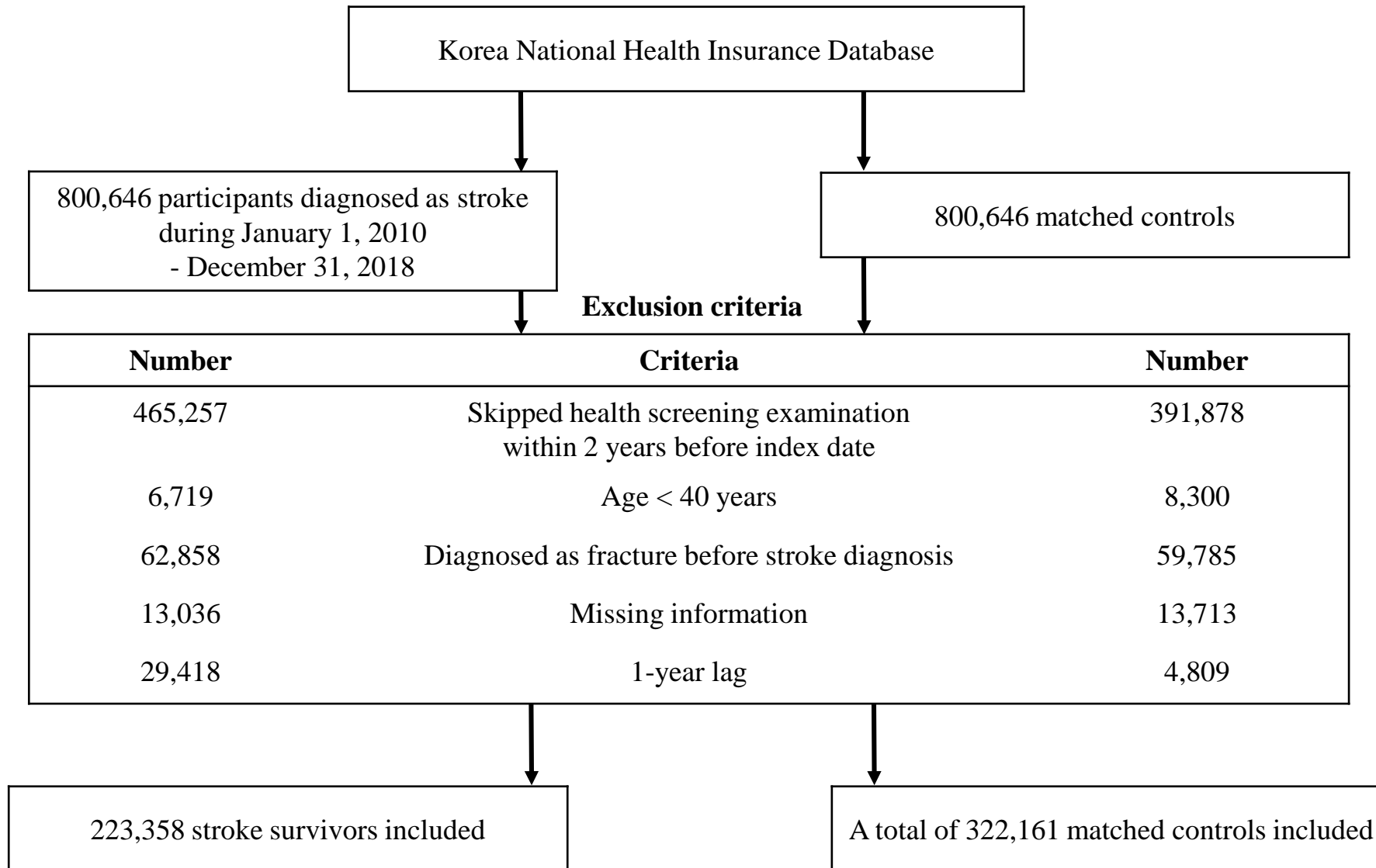
489 **Table 3.** Fracture risks among stroke survivors compared to matched controls and according to type of stroke

	Number	Event number (n)	IR per 1,000 person- years	Model 1 (Crude) HR (95% CI)	Model 2 aHR (95% CI)
Overall fracture					
Matched comparison group	322,161	20,398	15.1	1 (ref.)	1 (ref.)
Stroke survivors without post-stroke disability					
Hemorrhagic	40,875	2,554	16.6	1.10 (1.06, 1.15)	1.33 (1.28, 1.39)
Ischemic	155,551	11,331	19.7	1.31 (1.28, 1.34)	1.36 (1.33, 1.40)
Stroke survivors with post-stroke disability					
Hemorrhagic	6,475	553	22.7	1.5 (1.39, 1.64)	1.76 (1.62, 1.92)
Ischemic	20,457	1,906	25.0	1.66 (1.59, 1.74)	1.67 (1.59, 1.75)
Vertebral fracture					
Matched comparison group	322,161	9,797	7.1	1 (ref.)	1 (ref.)
Stroke survivors without post-stroke disability					
Hemorrhagic	40,875	955	6.0	0.86 (0.80, 0.92)	1.14 (1.07, 1.22)
Ischemic	155,551	5,054	8.5	1.22 (1.18, 1.26)	1.32 (1.27, 1.36)
Stroke survivors with post-stroke disability					
Hemorrhagic	6,475	159	6.2	0.89 (0.76, 1.04)	1.13 (0.97, 1.33)
Ischemic	20,457	784	10.0	1.41 (1.31, 1.51)	1.46 (1.35, 1.57)
Hip fracture					
Matched comparison group	322,161	3,102	2.2	1 (ref.)	1 (ref.)
Stroke survivors without post-stroke disability					
Hemorrhagic	40,875	545	3.4	1.56 (1.43, 1.71)	2.43 (2.21, 2.67)
Ischemic	155,551	2,678	4.5	2.05 (1.95, 2.16)	2.17 (2.06, 2.30)
Stroke survivors with post-stroke disability					
Hemorrhagic	6,475	203	8.0	3.66 (3.18, 4.22)	5.34 (4.62, 6.16)
Ischemic	20,457	601	7.5	3.44 (3.15, 3.76)	3.48 (3.18, 3.81)
Other fracture					
Matched comparison group	322,161	8,933	6.5	1 (ref.)	1 (ref.)

Stroke survivors without post-stroke disability						
	Hemorrhagic	40,875	1,220	7.7	1.20 (1.13, 1.27)	1.19 (1.12, 1.26)
	Ischemic	155,551	4,471	7.5	1.17 (1.13, 1.21)	1.16 (1.11, 1.20)
Stroke survivors with post-stroke disability						
	Hemorrhagic	6,475	241	9.6	1.48 (1.30, 1.68)	1.49 (1.31, 1.70)
	Ischemic	20,457	677	8.5	1.32 (1.22, 1.42)	1.31 (1.21, 1.42)

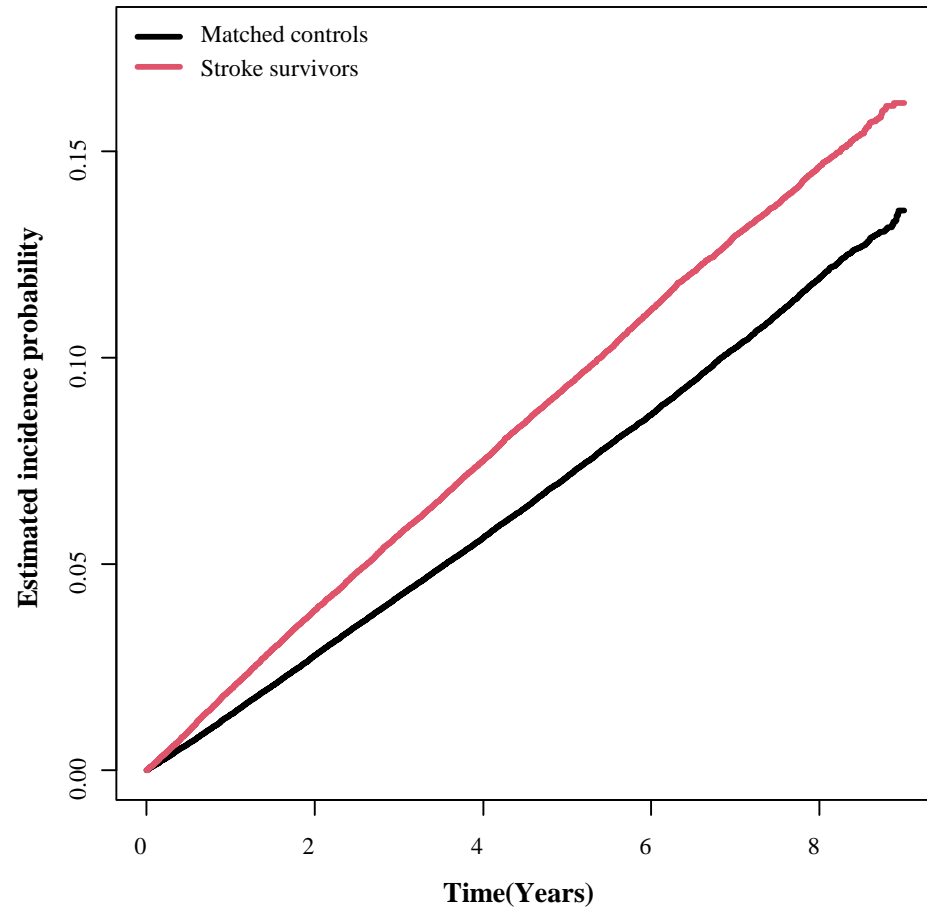
490 IR, incidence rate; HR, hazard ratio; CI, confidence interval

491 Model 2: adjusted for age, sex, area of residence, insulin, diabetes mellitus, hypertension, dyslipidemia, smoking, alcohol consumption, and body mass index



(A)

Overall Fracture



(B)

Overall Fracture

