

1 **Persistent Hyposmia as Surrogate for α -Synuclein-Linked Brain Pathology**

2

3 Brit Mollenhauer^{1,2,6,7*}, Juan Li^{3,4,6*}, Sebastian Schade², Sandrina Weber¹, Claudia Trenkwalder²,
4 Luis Concha-Marambio⁵, Julianna J. Tomlinson^{3,6,7}, aSCENT-PD Investigators^{6,7}, Michael G.
5 Schlossmacher^{3,6,7#}

6

7 ¹Department of Neurology, University of Goettingen, Kassel

8 ²Paracelsus-Elena-Klinik, Kassel, Germany

9 ³Neuroscience Program, ⁴Clinical Epidemiology Program, Ottawa Hospital Research Institute,
10 Ottawa, ON., Canada

11 ⁵Amprion, Inc.; San Diego, CA; USA

12 ⁶Aligning Science Across Parkinson's (ASAP) Collaborative Research Network, Chevy Chase,
13 MD. 20815

14 ⁷aSCENT-PD Investigators include: Ben Arenkiel, Zhandong Liu, Brit Mollenhauer, Josef
15 Penninger, Maxime Rousseaux, Armen Saghatelian, Natalina Salmaso, Michael G. Schlossmacher,
16 Christine Stadelmann-Nessler, Julianna J. Tomlinson, John M. Woulfe

17

18 *These authors contributed equally

19 #The corresponding author

20

21 Michael G. Schlossmacher, MD, FRCPC

22 Ottawa Hospital Research Institute; Ottawa, Canada

23 mschlossmacher@toh.ca

24 Phone: +1 613-562-5462

25

26

27 **ABSTRACT**

28 Impaired olfaction can be associated with neurodegenerative disorders. We examined odor
29 identification in newly diagnosed patients with parkinsonism and those at increased risk, measured
30 olfactory performances longitudinally, and juxtaposed results to cerebrospinal fluid (CSF) values.
31 Using Sniffin'-Sticks-Identification Tests (SST-ID), we examined 312 age-matched individuals at
32 a German center, including: 126 with Parkinson disease (PD), 109 healthy controls, 25 with other
33 neurodegenerative disorders and 52 with a REM-sleep behavior disorder (RBD). As expected, PD
34 patients had significantly lower SST-ID scores than controls. Scent identification by subjects with
35 other neurodegenerative diseases fell between those with PD and healthy individuals. Those with
36 isolated RBD, who subsequently converted to PD or dementia, had lower baseline scores than non-
37 converters. When monitoring olfaction in participants up to a decade, we saw small group
38 differences in progression rates for hyposmia. However, these variations were insignificant after
39 controlling for age, sex and length of intervals between testing. When analyzing participants' sense
40 of smell versus several CSF biomarkers linked to neurodegeneration, we found no correlation with
41 SST-ID scores. However, the means for normalized concentrations of α -synuclein, total tau,
42 phosphorylated tau and amyloid- β peptide₄₂ were reduced in PD. We also identified significant
43 age- and sex-linked differences in CSF values. Finally, we compared olfaction to the results of a
44 validated α -synuclein 'Seed Amplification Assay' (SAA) using CSF. We found that hyposmia
45 strongly correlated with a positive CSF α -synuclein SAA-test. We conclude that chronically
46 impaired olfaction in older adults is strongly associated with a positive α -synuclein SAA-test from
47 CSF but not with the concentrations of several, neuropathologically relevant CSF markers. We
48 posit that simple-to-administer, quantitative smell tests could serve as inexpensive screening tools
49 in future population studies for the identification of α -synuclein-related brain disorders, including
50 Parkinson's during its premotor phase.

51

52

53 **MANUSCRIPT**

54 Impaired olfaction can be associated with neurodegenerative disorders.¹ Its pathogenesis,
55 progression over time and any sex differences remain unknown. We examined odor identification
56 in newly diagnosed patients with parkinsonism and those at increased risk, measured olfactory
57 performances longitudinally, and juxtaposed results to cerebrospinal fluid (CSF) values.

58 Using Sniffin'-Sticks-Identification Tests (SST-ID; scale, 0-16), we examined 312 age-matched
59 individuals at a single center², including: 126 with Parkinson disease (PD), 109 healthy controls,
60 25 with other neurodegenerative disorders and 52 with a REM-sleep behavior disorder (RBD). In
61 16 RBD subjects, a neurodegenerative disorder³ was subsequently diagnosed (**Suppl. TableS1**).

62 The participants' baseline SST-ID scores are shown in **Fig.1a**, with reduced olfaction defined as a
63 score below the 10th percentile for each sex and age group.⁴ As expected,¹ PD patients had lower
64 SST-ID scores than controls ($P < 2e-16$). Scent identification by subjects with other
65 neurodegenerative diseases fell between those with PD ($P = 6.6e-05$) and healthy individuals
66 ($P = 0.018$). Those with isolated RBD, who subsequently converted to PD or dementia, had lower
67 baseline scores than non-converters ($P = 0.0021$). There was no sex difference after controlling for
68 age (**Fig.1a**).

69 When monitoring olfaction in participants up to a decade, we saw small group differences in
70 progression rates for hyposmia (**Fig.1b**; **Suppl. Fig.S1**). However, these variations were
71 insignificant after controlling for age, sex and length of intervals between testing.

72 When analyzing participants' sense of smell versus several CSF biomarkers² linked to
73 neurodegeneration, we found no correlation with SST-ID scores. However, the means for
74 normalized concentrations of α -synuclein, total tau, phosphorylated tau and amyloid- β peptide⁴²
75 were reduced in PD. We also identified significant age- and sex-linked differences in CSF values
76 (**Suppl. Fig.S2**).

77 Finally, we compared olfaction to the results of a validated α -synuclein 'Seed Amplification Assay'
78 (SAA) using CSF. Positivity in this binary test has been shown to reflect α -synuclein-linked brain

79 pathology.⁵ We found that hyposmia strongly correlated with a positive CSF α -synuclein SAA-
80 test [R: 0.63; R²: 0.4 (P<2.2e-16); **Fig.1c**]. There was no age or sex difference in its outcome.

81 We conclude that chronically impaired olfaction in older adults is strongly associated with a
82 positive α -synuclein SAA-test from CSF but not with the concentrations of several,
83 neuropathologically relevant CSF markers. Future studies will determine at what age hyposmia
84 and SAA-test positivity begin, and why. We posit that simple-to-administer, quantitative smell
85 tests could serve as inexpensive screening tools in future population studies for the identification
86 of α -synuclein-related brain disorders, including Parkinson's during its premotor phase.

87

88 **REFERENCES**

- 89 1. Haehner A, Hummel T, Reichmann H. (2011) Olfactory loss in Parkinson's disease.
90 *Parkinsons Dis.* 2011:450939.
- 91 2. Mollenhauer B, Trautmann E, Sixel-Döring F, Wicke T, Ebentheuer J, Schaumburg M,
92 Lang E, Focke NK, Kumar KR, Lohmann K, Klein C, Schlossmacher MG, Kohnen R,
93 Friede T, Trenkwalder C; DeNoPa Study Group. (2013) Nonmotor and diagnostic findings
94 in subjects with de novo Parkinson disease of the DeNoPa cohort. *Neurology* 81(14): 1226-
95 34
- 96 3. Postuma RB, Iranzo A, Hu M, Högl B, Boeve BF, Manni R, Oertel WH, Arnulf I, Ferini-
97 Strambi L, Puligheddu M, Antelmi E, Cochen De Cock V, Arnaldi D, Mollenhauer B,
98 Videnovic A, Sonka K, Jung KY, Kunz D, Dauvilliers Y, Provini F, Lewis SJ, Buskova J,
99 Pavlova M, Heidebreder A, Montplaisir JY, Santamaria J, Barber TR, Stefani A, St Louis
100 EK, Terzaghi M, Janzen A, Leu-Semenescu S, Plazzi G, Nobili F, Sixel-Doering F, Dusek
101 P, Bes F, Cortelli P, Ehgoetz Martens K, Gagnon JF, Gaig C, Zucconi M, Trenkwalder C,
102 Gan-Or Z, Lo C, Rolinski M, Mahlknecht P, Holzkecht E, Boeve AR, Teigen LN, Toscano
103 G, Mayer G, Morbelli S, Dawson B, Pelletier A. (2019) Risk and predictors of dementia
104 and parkinsonism in idiopathic REM sleep behaviour disorder: a multicentre study. *Brain.*
105 142(3):744-759.
- 106 4. Oleszkiewicz A, Schriever VA, Croy I, Hähner A, Hummel T. (2019) Updated Sniffin'
107 Sticks normative data based on an extended sample of 9139 subjects. *Eur Arch*
108 *Otorhinolaryngol.* 276(3):719-728.
- 109 5. Arnold MR, Coughlin DG, Brumbach BH, Smirnov DS, Concha-Marambio L, Farris CM,
110 Ma Y, Kim Y, Wilson EN, Kaye JA, Hiniker A, Woltjer RL, Galasko DR, Quinn JF. (2022)
111 α -Synuclein Seed Amplification in CSF and Brain from Patients with Different Brain
112 Distributions of Pathological α -Synuclein in the Context of Co-Pathology and Non-LBD
113 Diagnoses. *Ann Neurol.* 92(4):650-662.

115 **FIGURE**

116 **Figure 1: Association of chronically reduced olfaction with α -synuclein-linked brain diseases**

117 **(A)** Relationship between baseline SST-ID scores (y-axis) and disease group (columns), sex (rows),
118 and age at baseline enrolment (x-axis). Each square represents a participant. Classification of
119 olfaction (square colors) was defined by SST-ID scores at or below the 10th percentile for each sex
120 and age group, as published.⁴ The “reduced olfaction” group includes both hyposmia and anosmia.

121 **(B)** Changes in SST-ID scores over time. The legend underneath the graph summarizes the color
122 representation and corresponding number of participants in each group. Each square represents a
123 study subject at a given time point, with overlap seen due to integer scores and number of months
124 tracked. Each thin line tracks the changes of an individual participant, whereas thicker linear
125 regression lines summarize the overall trend.

126 **(C)** A Cummings estimation plot was used to illustrate CSF α -synuclein SAA-test results *versus*
127 SST-ID score distributions in each group at study enrolment. Each data point in the upper panel
128 represents the score of each participant, with colors representing CSF α -synuclein SAA-status as
129 either positive or negative. The vertical lines represent the conventional mean \pm standard deviation
130 error bars. Lower panels show the mean group difference (i.e., effect size) and its 95% confidence
131 interval (CI) estimated by bias-corrected and accelerated bootstrapping, using healthy controls
132 (HC) as the reference group. SST-ID score and CSF α -synuclein SAA-status distinguish PD
133 patients from age- and sex-matched healthy controls with AUC values of 0.89 (95% CI 0.85-0.93)
134 and 0.95 (95% CI 0.92-0.98), respectively.

135 Abbreviations denote SST-ID as Sniffin'-Sticks-Identification test; DeNoPa, *De Novo* Parkinson
136 Study; RBD, isolated REM sleep behavior disorder; PD, Parkinson disease; HC, healthy control;
137 OND as other neurological diseases; CSF, cerebrospinal fluid; SAA, seed amplification assay.

138

139 **SUPPLEMENTARY APPENDIX**

140 Supplement to: Mollenhauer B, Li J *et al.* Persistent Hyposmia as Surrogate of α -Synuclein-

141 Linked Brain Pathology

142 This appendix has been provided by the authors to give readers additional information about the

143 work.

144

145 **TABLE OF CONTENTS**

146 SUPPLEMENTARY INFORMATION: METHODS 9

147 CODE AND DATA AVAILABILITY 11

148 TABLE S1 12

149 LEGENDS / SUPPLEMENTARY FIGURES 14

150 SUPPLEMENTARY REFERENCES 16

151 ACKNOWLEDGEMENTS 18

152

153

154 **SUPPLEMENTARY INFORMATION: METHODS**

155 *Source of data and participants*

156 We used de-identified data from the ‘DeNoPa cohort’, an ongoing, single-center study based at
157 the Paracelsus-Elena Klinik in Kassel, Germany. Data from this study were downloaded on May
158 16th, 2023. The cohort² represents an observational, longitudinal study of patients with a newly
159 established (“*de novo*”) diagnosis of PD (UK Brain Bank Criteria²) that were naïve to L-DOPA
160 therapy at baseline, and of age- as well as sex-matched, neurologically healthy controls (HC).
161 Exclusion criteria included previously known or subsequently detected brain conditions, such as
162 normal pressure hydrocephalus, cerebrovascular disease, early cognitive impairment, features of
163 atypical parkinsonism, and medication-induced parkinsonism. HC subjects were recruited through
164 relatives and friends of enrolled PD subjects, other patients of the hospital-based clinic as well as
165 through newspaper advertisements in 2009. Control subjects had to be without any active, known
166 or previously treated condition of their central nervous system. Diagnostic accuracies for study
167 participants were ensured by ongoing follow-up visits every two years (as of 2023, 10th year
168 follow-up visits are underway). Twenty-seven patients classified as PD at baseline were later re-
169 grouped as patients with “other neurological diagnoses” (OND).

170 The ‘DeNoPa RBD cohort’ is a prospective study that follows patients with clinically diagnosed
171 isolated RBD, using an inpatient polysomnogram and related questionnaires, with up to 8 years of
172 follow-up. Both recruitment and follow-up visits are currently continuing. Conversion to PD and
173 OND was confirmed based on the UK Brain Bank Criteria and other diagnostic criteria.³ Of note,
174 there is no overlap in participants between the two cohorts, and participants’ olfactory function
175 had no influence on their recruitment into either of the two cohorts.

176 The launch and ongoing analyses of these cohorts were approved by the Investigational Review
177 Board of Landesärztekammer Hesse in Frankfurt, Germany (FF89/2008) and by the Regulatory
178 Ethics Board of The Ottawa Hospital in Ottawa, Canada (20180010-01H).

179

180 *Procedures and statistical analyses*

181 *Sniffin’ Sticks test (SST)*: SST comprises a supervised test for one’s sense of smell using pen-like
182 odor dispensing devices and is done in the clinic.⁴ This study focused on its Identification subtest

183 (SST-ID) containing 16 items, in which subjects choose the odor in each stick from four options
184 (one correct, three distractors). The German language version of the SST-ID test was completed
185 by DeNoPa PD and HC participants at baseline and serially during follow-up visits, as well as by
186 RBD participants at baseline and during follow-up visits (see **Figure 1.b** for details).

187 *An in vitro α -synuclein-directed seed amplification assay (SAA)*: Methodological details of the
188 SAA test, which was performed at Amprion Inc., San Diego, CA. used in this study have been
189 described elsewhere.⁵ The SAA data were available for a subset of DeNoPa (HC: 63; PD: 92; OND:
190 17) and RBD (n = 27) participants and downloaded on August 15th, 2023.

191 *Biomarkers measured in cerebrospinal fluid (CSF)*: Methodological details of the CSF biomarkers
192 quantification used in this study have been described elsewhere.⁶⁻⁸ The CSF data at baseline were
193 available for a subset of DeNoPa (HC: 61; PD: 98; OND: 19) participants and downloaded on May
194 10th, 2019. Five biomarkers, namely the concentrations of total α -synuclein, total tau,
195 phosphorylated tau, amyloid- β peptide₄₂, and total protein, were studied here (**Supplementary**
196 **Figure S1 a-e**). The first four readouts were then further normalized using CSF total protein
197 concentrations measurement in each person (**Supplementary Figure S1 f-i**).

198 *Statistical analyses*: Demographic and diagnostic characteristics of the study cohorts are
199 summarised using n (%) or median (the interquartile range (IQR)). The reported p-values represent
200 the significance from corresponding Chi-squared test, Welch Two Sample t-test, or ANOVA with
201 Bonferroni or Dunnett post-hoc test corrections, using the PD group as the reference group.
202 Coefficients reported in **Supplementary Figures S1, S2** were calculated using multivariate linear
203 regression. Results with p-values smaller than 0.05 were considered significant. Statistical
204 analyses were performed using 'R' (version 4.2.0). Cummings estimation plots were generated
205 using 'dabestr',⁹ all other plots were generated using 'ggplot2'.¹⁰ The package 'pROC'¹¹ was used
206 for generating ROC and AUC.

207

208 **CODE AND DATA AVAILABILITY**

209 The code for data analyses and figures is publicly accessible in GitHub
210 (<https://github.com/JuanLiOHRI/SAA>). Data can be accessed via zenodo
211 (<https://zenodo.org/records/10222976>).

212

213 **TABLE S1**

214 **Demographic characteristics of adults enrolled in two single-centre cohorts from Germany**

Characteristic	DeNoPa			RBD ²
	PD	HC	OND ¹	
N	126	109	25	52
Sex: Male	82 (65.1)	67 (61.5) [p = 0.57]	15 (60) [p = 0.63]	35 (67.3)
Age at baseline in years				
All	66 (13.8)	65 (10) [p = 0.98]	71 (12.0) [p = 0.01]	68 (11.2)
Male	66 (14.8)	67 (8) [p = 0.81]	70 (12) [p = 0.20]	68 (10.5)
Female	66 (12.8)	64 (9.8) [p = 0.90]	74 (9.5) [p = 0.03]	68 (12)
Parkinsonism duration at baseline in months	14.5 (14.75)	n.a.	15 (25) [p = 0.25]	n.a.
Follow-up time in months	118 (48.5)	121 (4.0) [p = 0.05]	72 (69) [p = 0.03]	48.5 (57)

215
216 ¹ Detailed diagnosis in the OND group: DLB = 3, ET = 6, MSA = 4, PSP = 5, RLS = 1, DD PD =
217 2, Vascular PD = 4.

218 ² Detailed diagnoses in the converted cases in the RBD cohort: PD = 10, DLB = 5, DD PD = 1.

219 Values are n (%) or median (IQR). The reported p-values in square brackets represent the
220 significance from corresponding Pearson's Chi-squared test, Welch two sample t-test, or ANOVA
221 with Dunnett post-hoc test, using the PD group as the reference group.

222 DeNoPa = *De Novo* Parkinson Study. RBD = isolated REM sleep behavior disorder. IQR = the
223 interquartile range. PD = Parkinson disease. HC = healthy control. OND = other neurological
224 diseases. DLB = dementia with Lewy bodies. ET = essential tremor. MSA = multiple system

225 atrophy. PSP = progressive supranuclear palsy. RLS = restless leg syndrome. DD PD = uncertain

226 neurological diagnosis. n.a. = not available

227

228 **LEGENDS / SUPPLEMENTARY FIGURES**

229 **Suppl. Figure S1: Rate of changes of SST-ID scores over time.**

230 The rate of change was calculated by dividing the score difference of two successive visits with
231 the time difference in months. The legend underneath the graph summarizes the color
232 representation and corresponding number of participants in each group. Each square represents a
233 study subject at a given time point. Each thin line tracks the changes of an individual participant,
234 whereas thicker linear regression lines summarize the overall trend.

235 The table lists the coefficients and p-values of linear regression using “rate ~ month + group + age
236 + sex” as the formula.

237

238 **Suppl. Figure S2: Relationship between select CSF biomarkers and disease group and sex.**

239 **(A-I)** Cummings estimation plots were used to illustrate and compare select CSF biomarker
240 distributions, as indicated, in each study group. Each point represents a participant. Classification
241 of olfaction (point colors) was defined as SST-ID scores below the 10th percentile in each sex and
242 age group. The vertical lines represent the conventional mean \pm standard deviation error bars. The
243 lower panels show the mean group difference (the effect size) and its 95% confidence interval (CI)
244 estimated by bias-corrected and accelerated bootstrap, using HC in each sex as the reference group.
245 The table in each individual panel **(A-I)** lists the coefficients, p-values, and significance levels of
246 linear regression using “biomarker \sim group + age + sex + olfaction” as the formula.
247 SST-ID = Sniffin’ Sticks Identification test. DeNoPa = *De Novo* Parkinson Study. PD = Parkinson
248 disease. HC = healthy control. OND = other neurological diseases. CSF = cerebrospinal fluid.

249

250

251 SUPPLEMENTARY REFERENCES

- 252 1. Mollenhauer B, Trautmann E, Sixel-Döring F, Wicke T, Ebentheuer J, Schaumburg M, Lang
253 E, Focke NK, Kumar KR, Lohmann K, Klein C, Schlossmacher MG, Kohlen R, Friede T,
254 Trenkwalder C; DeNoPa Study Group. (2013) Nonmotor and diagnostic findings in subjects
255 with de novo Parkinson disease of the DeNoPa cohort. *Neurology* 81(14): 1226-34
- 256 2. Hughes, A. J., Daniel, S. E., Kilford, L. & Lees, A. J. Accuracy of clinical diagnosis of
257 idiopathic Parkinson's disease. A clinico-pathological study of 100 cases. *J. Neurol.*
258 *Neurosurg. Psychiatry* 55, 181–184 (1992).
- 259 3. Postuma RB, Berg D, Stern M, Poewe W, Olanow CW, Oertel W, Obeso J, Marek K, Litvan
260 I, Lang AE, Halliday G, Goetz CG, Gasser T, Dubois B, Chan P, Bloem BR, Adler CH,
261 Deuschl G. MDS clinical diagnostic criteria for Parkinson's disease. *Mov Disord.* 2015
262 Oct;30(12):1591-601.
- 263 4. Hummel T, Sekinger B, Wolf SR, Pauli E, Kobal G. (1997) 'Sniffin' sticks': olfactory
264 performance assessed by the combined testing of odor identification, odor discrimination and
265 olfactory threshold. *Chem Senses.* 22(1):39-52.
- 266 5. Concha-Marambio L, Weber S, Farris CM, Dakna M, Lang E, Wicke T, Ma Y, Starke M,
267 Ebentheuer J, Sixel-Döring F, Muntean ML, Schade S, Trenkwalder C, Soto C, Mollenhauer
268 B. (2023) Accurate Detection of α -Synuclein Seeds in Cerebrospinal Fluid from Isolated
269 Rapid Eye Movement Sleep Behavior Disorder and Patients with Parkinson's Disease in the
270 DeNovo Parkinson (DeNoPa) Cohort. *Mov Disord.* 2023 Apr;38(4):567-578.
- 271 6. Mollenhauer B, Cullen V, Kahn I, Krastins B, Outeiro TF, Pepivani I, Ng J, Schulz-Schaeffer
272 W, Kretzschmar HA, McLean PJ, Trenkwalder C, Sarracino DA, Vonsattel JP, Locascio JJ,
273 El-Agnaf OM, Schlossmacher MG. (2008) Direct quantification of CSF alpha-synuclein by
274 ELISA and first cross-sectional study in patients with neurodegeneration. *Exp Neurol.*
275 213(2):315-25.
- 276 7. Mollenhauer B, Locascio JJ, Schulz-Schaeffer W, Sixel-Döring F, Trenkwalder C,
277 Schlossmacher MG. (2011) α -Synuclein and tau concentrations in cerebrospinal fluid of
278 patients presenting with parkinsonism: a cohort study. *Lancet Neurol.* 2011 Mar;10(3):230-
279 40. doi: 10.1016/S1474-4422(11)70014-X. Erratum in: *Lancet Neurol.* 2011 Apr;10(4):297.

- 280 8. Mollenhauer B, Trautmann E, Taylor P, Manninger P, Sixel-Döring F, Ebentheuer J,
281 Trenkwalder C, Schlossmacher MG. (2013) Total CSF α -synuclein is lower in de novo
282 Parkinson patients than in healthy subjects. *Neurosci Lett.* 532:44-8.
- 283 9. Ho J.W., Tunkaya T., (2020). *dabestr: Data Analysis using Bootstrap-Coupled Estimation.*
284 <https://cran.r-project.org/web/packages/dabestr/index.html>
- 285 10. Wickham H (2016). *ggplot2: Elegant Graphics for Data Analysis.* Springer-Verlag New York.
286 ISBN 978-3-319-24277-4, <https://ggplot2.tidyverse.org>.
- 287 11. Robin X., et al. (2023). *pROC: Display and Analyze ROC Curves.* [https://cran.r-](https://cran.r-project.org/web/packages/pROC/index.html)
288 [project.org/web/packages/pROC/index.html](https://cran.r-project.org/web/packages/pROC/index.html)

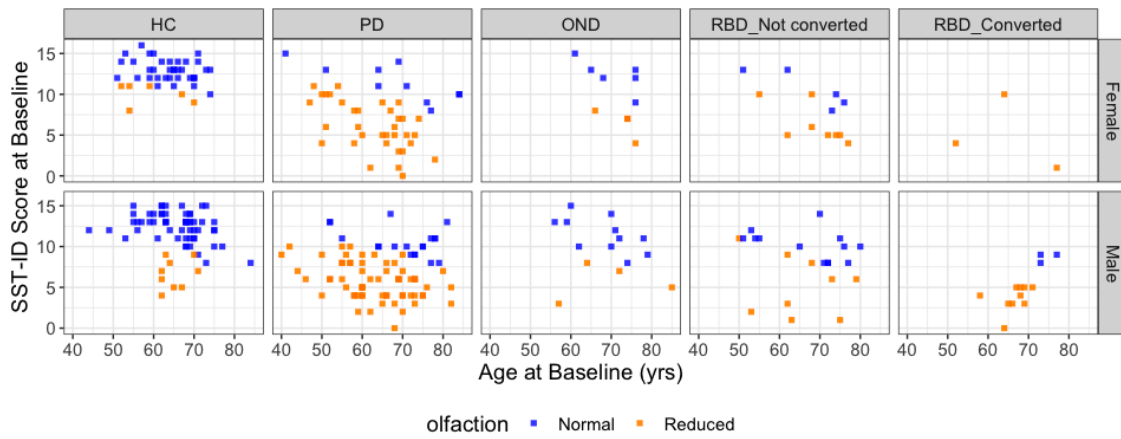
289

290 **ACKNOWLEDGEMENTS**

291 This research was funded in part by Aligning Science Across Parkinson's [Grant ID: ASAP-
292 020625] administered by the Michael J. Fox Foundation for Parkinson's Research (MJFF) and by
293 the Parkinson Research Consortium Ottawa.

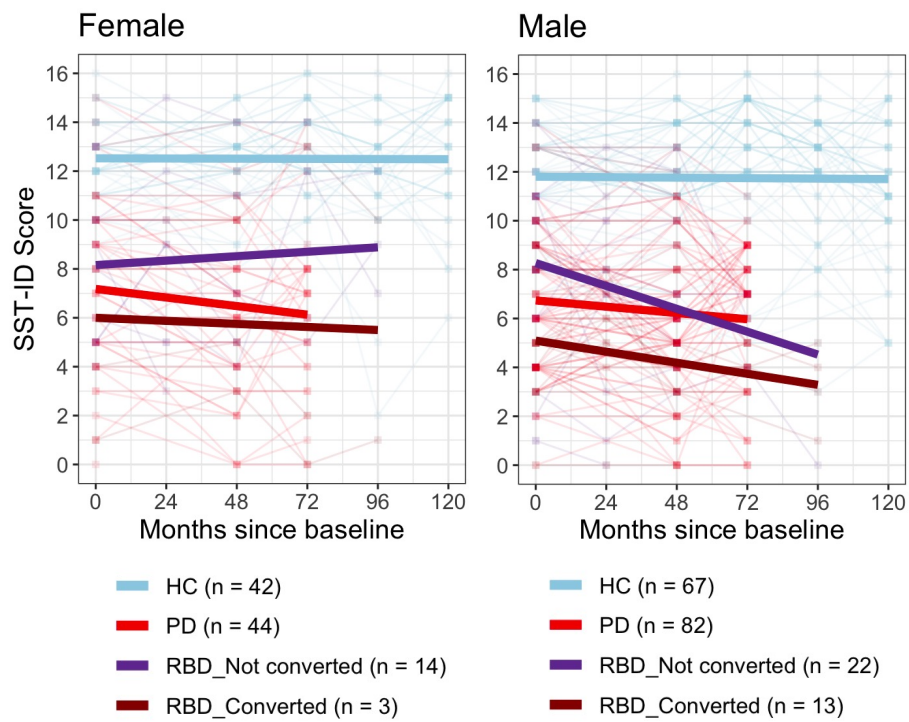
294

295 **A**



296

297 **B**



298

299

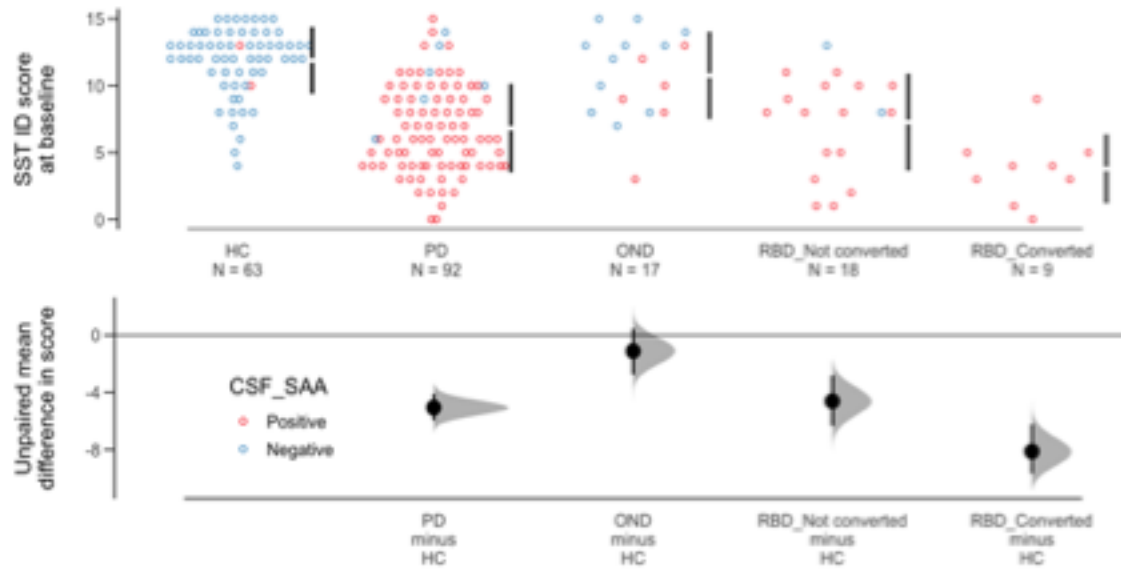
300

301

302

303

304 C

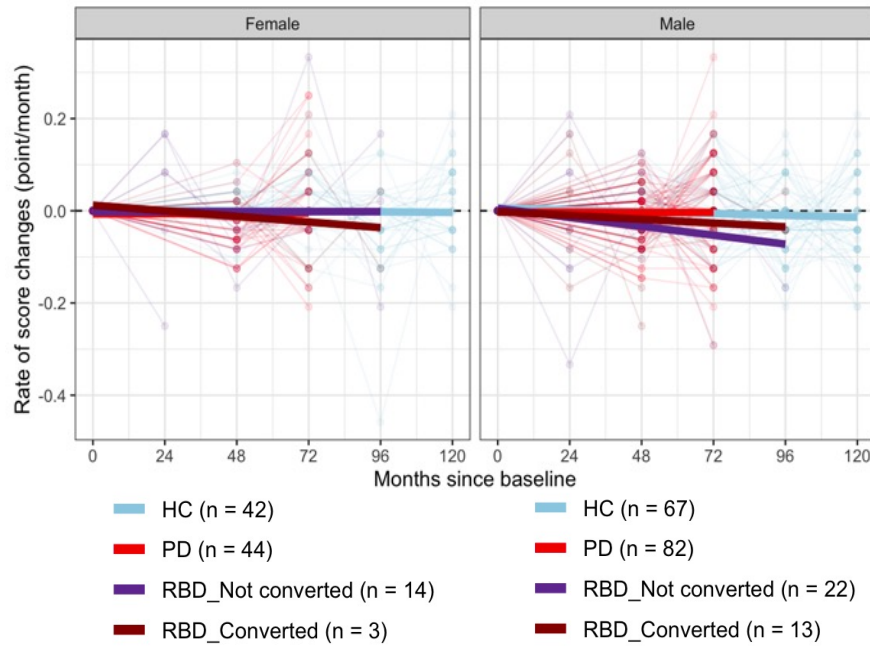


305

306 **Figure 1: Association of chronically reduced olfaction with α -synuclein-linked brain diseases**

307

308



309

310

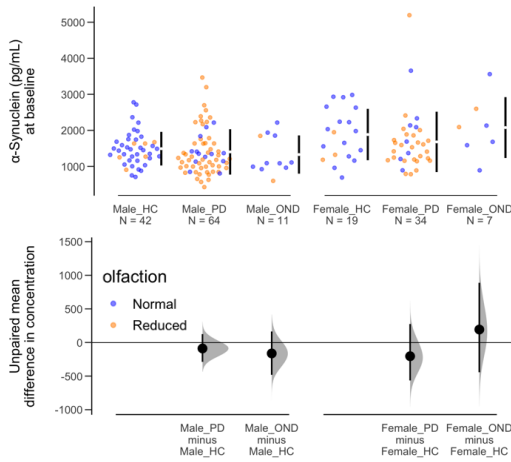
311

	Coefficient	p-value
(Intercept)	0.02151	0.287
Month	-9.23E-05	0.188
Group: PD	-0.004101	0.466
Group: RBD_Not converted	-0.008664	0.351
Group: RBD_Converted	-0.01197	0.276
Age	-0.000252	0.4
Sex: Male	-0.001891	0.708

312 **Suppl. Figure S1: Rate of changes of SST-ID scores over time.**

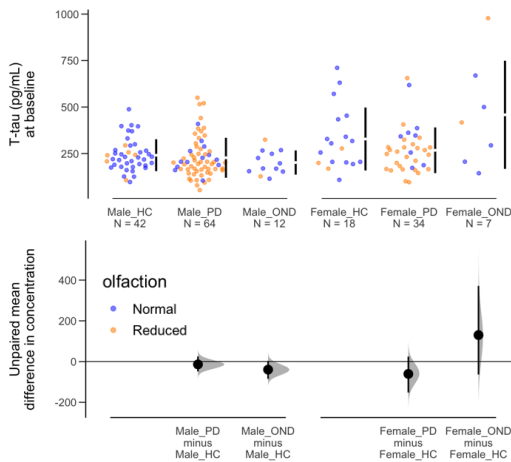
313

A: Total α -synuclein in CSF by group and sex



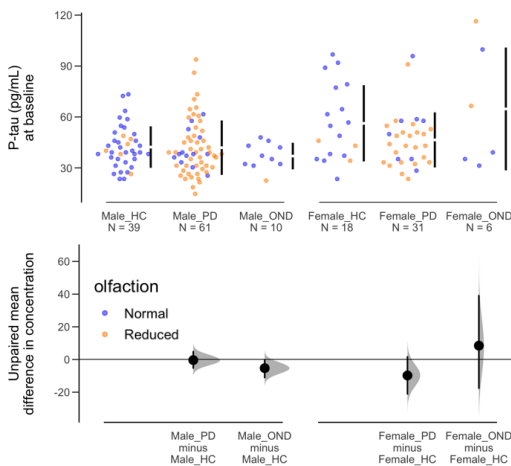
	Coefficient	p-value	
(Intercept)	785.093	0.048464	*
Group: PD	-88.454	0.50093	
Group: OND	-53.941	0.755369	
Age	16.607	0.00432	**
Sex: Male	-370.055	0.000371	***
Olfaction: Reduced	-28.366	0.822528	

B: Total tau in CSF by group and sex



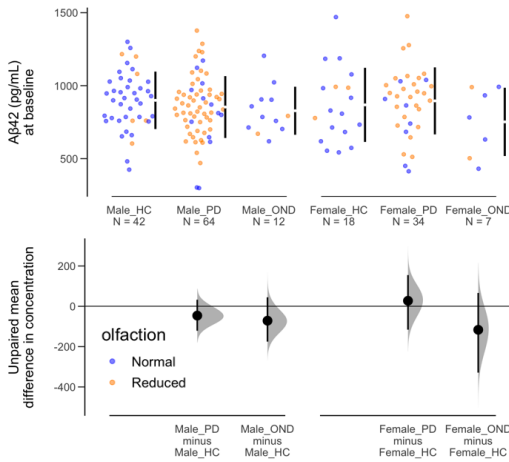
	Coefficient	p-value	
(Intercept)	39.256	0.599	
Group: PD	-30.589	0.22	
Group: OND	12.407	0.699	
Age	4.324	0.0000982	***
Sex: Male	-79.644	0.0000584	***
Olfaction: Reduced	8.801	0.712	

C: Phosphorylated tau in CSF by group and sex



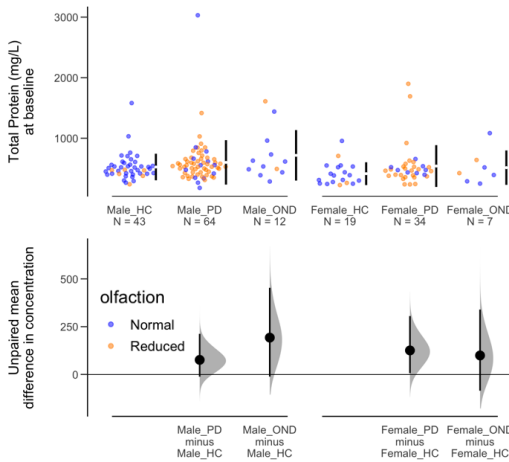
	Coefficient	p-value	
(Intercept)	21.6646	0.039964	*
Group: PD	-3.9124	0.258921	
Group: OND	-1.2608	0.789619	
Age	0.4845	0.001663	**
Sex: Male	-9.8005	0.000468	***
Olfaction: Reduced	1.0947	0.742111	

D: Ab42 in CSF by group and sex



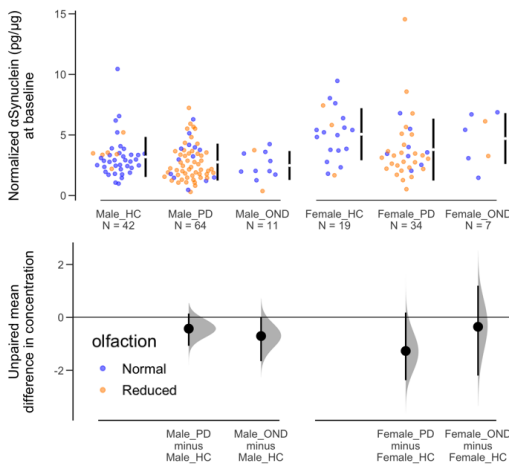
	Estimate	Pr(> t)	
(Intercept)	894.6618	1.82E-10	***
group: PD	-66.8745	0.1294	
group: OND	-94.3713	0.0976	.
age	-0.1737	0.9279	
sex: Male	-5.0841	0.8818	
olfaction: Reduced	69.7542	0.0994	.

E: Total protein content of CSF by group and sex



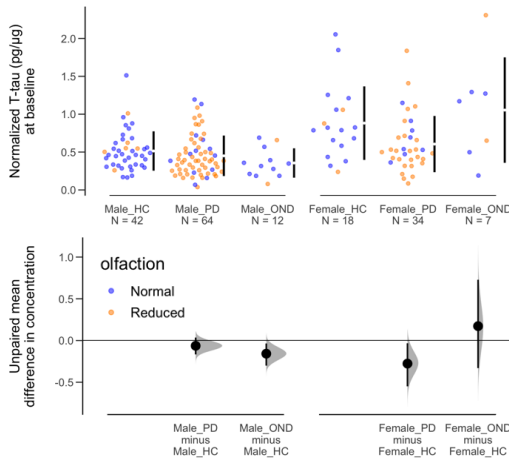
	Coefficient	p-value	
(Intercept)	589.587	0.00277	**
Group: PD	121.162	0.06337	.
Group: OND	166.213	0.0487	*
Age	-2.386	0.39993	
Sex: Male	93.304	0.06529	.
Olfaction: Reduced	-48.689	0.43644	

F: Normalized total α-synuclein in CSF by group and sex



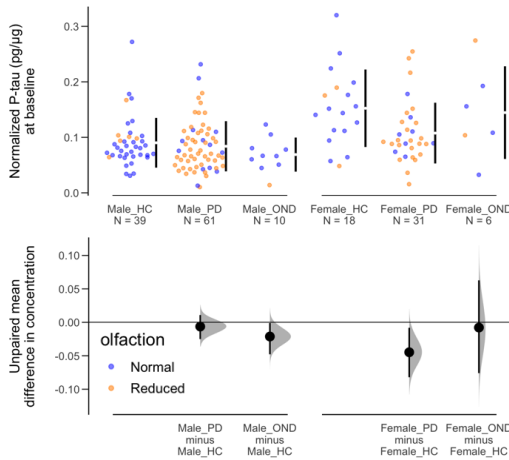
	Coefficient	p-value	
(Intercept)	2.35543	0.041	*
Group: PD	-0.70624	0.0646	.
Group: OND	-0.61559	0.2204	
Age	0.03662	0.0289	*
Sex: Male	-1.44577	2.20E-06	***
Olfaction: Reduced	0.0792	0.8288	

G: Normalized total tau in CSF by group and sex



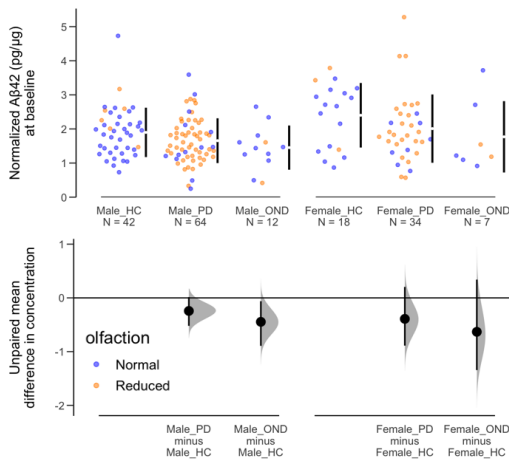
	Coefficient	p-value	
(Intercept)	0.203781	0.32572	
Group: PD	-0.145039	0.03651	*
Group: OND	-0.055866	0.53023	
Age	0.009416	0.00202	**
Sex: Male	-0.284432	3.33E-07	***
Olfaction: Reduced	0.034067	0.60652	

H: Normalized phosphorylated tau in CSF by group and sex



	Coefficient	p-value	
(Intercept)	0.0713408	0.0289	*
Group: PD	-0.021574	0.0451	*
Group: OND	-0.0179481	0.2205	
Age	0.0010134	0.032	*
Sex: Male	-0.0413419	2.64E-06	***
Olfaction: Reduced	0.0052111	0.6126	

I: Normalized Ab42 in CSF by group and sex



	Estimate	Pr(> t)	
(Intercept)	2.180539	1.4E-05	***
group: PD	-0.418569	0.01084	*
group: OND	-0.524225	0.01338	*
age	0.001771	0.80309	
sex: Male	-0.396461	0.00202	**
olfaction: Reduced	0.206328	0.18744	

314 **Suppl. Figure S2: Relationship between select CSF biomarkers and disease group and sex.**