

1 **The duration of lithium use and biological ageing: telomere length,** 2 **frailty, metabolomic age and all-cause mortality**

3
4 †Julian Mutz^{1*}, †Win Lee Edwin Wong^{2, 3, 4}, Timothy R. Powell¹, Allan H. Young^{4, 5}, Gavin
5 S. Dawe^{2, 3, 6} & Cathryn M. Lewis^{1, 7}

- 6
7 1. Social, Genetic and Developmental Psychiatry Centre, Institute of Psychiatry,
8 Psychology & Neuroscience, King's College London, London, United Kingdom.
9 2. Department of Pharmacology, Yong Loo Lin School of Medicine, National University
10 of Singapore, Singapore.
11 3. Healthy Longevity Translational Research Programme, Yong Loo Lin School of
12 Medicine, National University of Singapore, Singapore.
13 4. Department of Psychological Medicine, Institute of Psychiatry, Psychology &
14 Neuroscience, King's College London, London, United Kingdom.
15 5. South London & Maudsley NHS Foundation Trust, Bethlem Royal Hospital, Monks
16 Orchard Road, London, United Kingdom.
17 6. Neurobiology Programme, Life Sciences Institute, National University of Singapore,
18 Singapore.
19 7. Department of Medical and Molecular Genetics, Faculty of Life Sciences and
20 Medicine, King's College London, London, United Kingdom.

21
22 †These authors contributed equally to this work and are designated as co-first authors.

23
24 *Corresponding author:

25 Dr Julian Mutz; Social, Genetic and Developmental Psychiatry Centre, Institute of Psychiatry,
26 Psychology & Neuroscience, King's College London, Memory Lane, London, SE5 8AF,
27 United Kingdom. Email: julian.mutz@gmail.com.

28 **ABSTRACT**

29 **Background:** Lithium is an established first-line treatment for bipolar disorder. Beyond its
30 therapeutic effect as a mood stabiliser, lithium exhibits potential anti-ageing effects. This study
31 aimed to examine the relationship between the duration of lithium use, biological ageing and
32 mortality.

33 **Methods:** The UK Biobank is an observational study of middle-aged and older adults. We
34 tested associations between the duration of lithium use (number of prescriptions, total duration
35 of use, and duration of the first prescription period) and telomere length, frailty, metabolomic
36 age, pulse rate and all-cause mortality.

37 **Results:** 591 individuals (mean age = 57.49 years; 55% females) had been prescribed lithium.
38 There was no evidence that the number of prescriptions ($\beta = -0.022$, 95% CI -0.081 to 0.037,
39 $p = 0.47$), the total duration of use ($\beta = -0.005$, 95% CI -0.023 to 0.013, $p = 0.57$) or the duration
40 of the first prescription period ($\beta = -0.018$, 95% CI -0.051 to 0.015, $p = 0.29$) correlated with
41 telomere length. There was also no evidence that the duration of lithium use correlated with
42 frailty or metabolomic age. However, a higher prescription count or a longer duration of use
43 was associated with a lower pulse rate. The duration of lithium use did not predict mortality.

44 **Conclusions:** We observed no evidence of associations between the duration of lithium use
45 and biological ageing markers, including telomere length. Our findings suggest that the
46 potential anti-ageing effects of lithium do not differ by duration of use.

47 INTRODUCTION

48 Lithium is considered the gold standard treatment for patients with bipolar disorder who
49 experience recurrent episodes of (hypo)mania and depression.¹ Lithium is also used to augment
50 antidepressant medication, for example in patients with difficult-to-treat major depressive
51 disorder.² While the evidence supports lithium's therapeutic effects,³ its mechanisms of action
52 are incompletely understood. Studies indicate that lithium influences neurotransmitter
53 signalling and acts on second messenger systems including the adenylyl cyclase and protein
54 kinase A pathways.⁴

55

56 Beyond its therapeutic effects as a mood stabiliser, multiple lines of evidence suggest that
57 lithium may impact biological ageing and longevity.⁵ For example, mitochondrial dysfunction
58 is a hallmark of ageing,⁶ and lithium treatment has been shown to enhance mitochondrial
59 metabolism by increasing the activity of electron transport complexes.^{7,8} Preclinical and
60 clinical studies suggest that lithium can reduce oxidative stress, which is linked to several age-
61 related diseases.^{9,10} Notably, studies have demonstrated that lithium extends the lifespan of
62 model organisms, including *Caenorhabditis elegans* (“*C. elegans*”) and *Drosophila*.^{11,12}

63

64 A specific focus of research on lithium's potential anti-ageing properties has been to examine
65 its link with telomere length. Telomeres, which are repetitive nucleoprotein complexes at the
66 ends of chromosomes, progressively shorten with cell division and play an important role in
67 maintaining genomic stability. Telomere attrition is a hallmark of ageing and is linked to
68 cellular senescence.⁶ Telomere dysfunction plays a role in many human diseases.¹³ For
69 example, meta-analyses suggest that individuals with bipolar disorder have shorter telomeres
70 than healthy controls.¹⁴⁻¹⁶ However, several studies have also found no evidence of a difference
71 in telomere length or observed longer telomeres in patients with bipolar disorder. These
72 inconsistencies may in part result from differences in lithium treatment. Some clinical studies
73 suggest that lithium protects against telomere attrition. For example, studies have shown that
74 bipolar disorder patients treated with lithium had longer telomeres than healthy controls¹⁷ and
75 that lithium-treated patients had longer telomeres than patients who were not treated with
76 lithium.^{17,18} While these group differences in telomere length could be due to other factors,
77 several studies found that a longer duration of lithium treatment was correlated with longer
78 telomeres.¹⁹

79

80 Building on previous studies in the UK Biobank that have identified predictors and correlates
81 of telomere length,²⁰⁻²² we examined the potential impact of the duration of lithium treatment
82 on telomere length and other markers of biological ageing. We defined three measures of
83 lithium treatment duration using primary care prescription records and assessed multiple
84 markers of biological ageing and longevity, including telomere length, frailty, metabolomic
85 age and all-cause mortality. The overall aim was to elucidate the broader implications of
86 lithium treatment on biological ageing.

87 **METHODS**

88 **Study population**

89 The UK Biobank is a prospective community-based study that recruited more than 500,000
90 middle-aged and older adults, aged 40 to 69 years.²³ Individuals who were registered with the
91 UK National Health Service (NHS) and lived within a 25-mile (~40 km) radius of one of 22
92 assessment centres were invited to participate. At the baseline assessment, which took place
93 between 2006 and 2010, participants reported their sociodemographic characteristics, health
94 behaviours and medical history. They also underwent physical examinations and had blood and
95 urine samples taken. Data linkage to primary care health records is available for about 230,000
96 participants.

98 **Duration of lithium use**

99 The duration of lithium use was derived from medication prescriptions recorded by general
100 practitioner practices as part of routine patient care. These data included prescriptions recorded
101 between July 1945 and September 2017 and were available for 222,073 participants. Lithium
102 prescriptions were identified using a combination of the British National Formulary (BNF),
103 Read v2 and Dictionary of Medicines and Devices (dm+d) codes, and by searching for relevant
104 string permutations across the prescription medication names. The duration of lithium use was
105 defined in three ways, similar to our previous study on antidepressants.²⁴ First, we calculated
106 the total number of lithium prescriptions across all primary care prescription records. Second,
107 we calculated the total number of weeks across all prescription windows, which we defined as
108 periods of less than 90 days between consecutive prescriptions. Third, we calculated the
109 number of weeks of the first prescription window. Prescriptions after the baseline assessment
110 date were excluded from these calculations.

112 **Telomere length**

113 Leukocyte telomere length was measured using a quantitative polymerase chain reaction (PCR)
114 assay that expresses telomere length as the ratio of the telomere repeat copy number (T) relative
115 to a single-copy gene (S) that encodes haemoglobin subunit beta.²⁵ The T/S ratio is proportional
116 to an individual's average telomere length.²⁶ Measurements were adjusted for operational and
117 technical parameters (PCR machine, staff member, enzyme batch, primer batch, temperature,
118 humidity, primer batch × PCR machine, primer batch × staff member, A260/A280 ratio of the
119 DNA sample and A260/A280 ratio squared), log_e transformed and Z-standardised.

120

121 **Frailty index**

122 A frailty index was derived from health deficits that met the following criteria: indicators of
123 poor health; more prevalent in older individuals; neither rare nor universal; covering multiple
124 areas of functioning; available for $\geq 80\%$ of participants.²⁷ The index included 49 variables
125 ascertained via touch-screen questionnaires and nurse-led interviews, including
126 cardiometabolic, cranial, immunological, musculoskeletal, respiratory, and sensory traits, well-
127 being, infirmity, cancer, and pain. Categorical variables were dichotomised (no deficit = 0;
128 deficit = 1), and ordinal variables were mapped onto a score between zero and one. The sum
129 of deficits was divided by the total number of possible deficits, resulting in frailty index scores
130 between zero and one, with higher scores indicating greater levels of frailty.²⁸ Participants with
131 missing data for $\geq 10/49$ variables were excluded.²⁷

132

133 **Metabolomic ageing clock**

134 Nuclear magnetic resonance (NMR) spectroscopy-derived metabolomic biomarkers were
135 quantified in non-fasting plasma samples using the Nightingale Health platform, which
136 ascertains 168 circulating metabolites using a high-throughput standardised protocol.²⁹ In
137 101,359 participants, we developed a metabolomic ageing clock using a Cubist rule-based
138 regression model. This algorithm is an ensemble technique that derives rules from decision
139 trees and fits linear regression models in the subsets of data defined by these rules. The model
140 incorporates boosting techniques and may adjust predictions based on k -nearest neighbors.^{30,31}
141 Model performance was assessed using nested cross-validation with 10 outer loops and 5 inner
142 folds for hyperparameter tuning. The cross-validation mean absolute error (MAE) was 5.42
143 years. Metabolomic age (MileAge) delta represents the difference between predicted and
144 chronological age, with positive and negative values indicating accelerated and decelerated
145 biological ageing, respectively.

146

147 **Pulse rate**

148 Resting pulse rate in beats per minute was recorded using an Omron 705 IT digital blood
149 pressure monitor device or, exceptionally, a manual sphygmomanometer. We calculated the
150 average of the two available readings to reduce potential measurement error.

151

152 **All-cause mortality**

153 The date of death was obtained through linkage with national death registries: NHS Digital
154 (England and Wales) and the NHS Central Register (Scotland). The censoring date was 30

155 November 2022. The most recent death was recorded on 19 December 2022, although the data
156 were incomplete for December 2022.

157

158 **Covariates**

159 Covariates for the cross-sectional and prospective analyses included chronological age, sex,
160 body mass index (kg/m²), morbidity count (none/one, two, three, four or five+), gross annual
161 household income (<£18,000, £18,000–£30,999, £31,000–£51,999 or £52,000–£100,000 /
162 >£100,000), highest educational/professional qualification (none, O levels/GCSEs/CSEs, A
163 levels/NVQ/HND/HNC or degree) and cohabitation status (single or with spouse/partner).

164

165 **Statistical analyses**

166 The data processing and analyses were performed in R (version 4.2). Sample characteristics
167 were summarised using means and standard deviations or counts and percentages. Associations
168 between the duration of lithium use (number of prescriptions, total duration of use, and duration
169 of the first prescription period) and telomere length were estimated using ordinary least squares
170 regression. We further tested associations between the duration of lithium use and two other
171 indicators of biological age, the frailty index and the metabolomic ageing clock, and pulse rate.
172 Hazard ratios (HRs) and 95% confidence intervals were estimated using Cox proportional
173 hazards models to examine associations between the duration of lithium use and all-cause
174 mortality. We examined both quintiles of the distribution, with the lowest quintile as the
175 reference group, and spline functions of the distribution with the median as reference value.
176 Age in years was used as the underlying time axis, with age 40 as the start of follow-up. The
177 cross-sectional and prospective analyses were adjusted for chronological age and sex (Model
178 1) and chronological age, sex, body mass index, morbidity count, household income, highest
179 qualification, and cohabitation status (Model 2).

180

181 **Sensitivity analyses**

182 We conducted the following sensitivity analyses of the duration of lithium use and biological
183 ageing markers: we restricted the sample to individuals with a total duration of lithium use of
184 (a) at least 1 year (52 weeks) or (b) at least 4.5 years (234 weeks); we additionally adjusted for
185 current antidepressant medication use (yes/no) at the time of the baseline assessment.

186 **RESULTS**

187 **Sample characteristics**

188 Of the 502,476 participants in the UK Biobank, 222,073 individuals (about 44.2% of the
189 sample) had prescription data available through their linked primary care records. Of the 773
190 participants with a lithium prescription in their primary care record, $n = 182$ were excluded
191 because their first prescription followed the baseline assessment. The duration of lithium use
192 was estimated for 591 participants (Figure S1). Sample characteristics are shown in Table 1.
193 Based on our previously reported criteria,^{32,33} 71.74% of participants had a lifetime history of
194 mood disorders ($n = 248$ had bipolar disorder and $n = 176$ had depression).

195

Table 1. Sample characteristics

	Lithium duration ($N=591$)	Primary care ($N=221,482$)	No primary care ¹ ($N=280,403$)
Age; mean (SD)	57.49 (7.51)	56.58 (8.05)	56.48 (8.13)
Sex			
Female	327 (55.3%)	121618 (54.9%)	151420 (54.0%)
Male	264 (44.7%)	99864 (45.1%)	128982 (46.0%)
Ethnicity			
White	572 (96.8%)	210119 (94.9%)	261977 (93.4%)
Non-White	14 (2.4%)	10322 (4.7%)	16695 (6.0%)
Missing ²	5 (0.8%)	1041 (0.5%)	1731 (0.6%)
Highest qualification			
None	119 (20.1%)	39882 (18.0%)	45265 (16.1%)
O levels/GCSEs/CSEs	125 (21.2%)	58292 (26.3%)	73662 (26.3%)
A levels/NVQ/HND/HNC ³	118 (20.0%)	50521 (22.8%)	63207 (22.5%)
Degree	222 (37.6%)	69916 (31.6%)	91014 (32.5%)
Missing ²	7 (1.2%)	2871 (1.3%)	7255 (2.6%)
Household income⁴			
Very low	198 (33.5%)	45278 (20.4%)	51717 (18.4%)
Low	132 (22.3%)	49247 (22.2%)	58794 (21.0%)
Medium	95 (16.1%)	49037 (22.1%)	61637 (22.0%)
High / Very high	72 (12.2%)	45305 (20.5%)	63809 (22.8%)
Missing ²	94 (15.9%)	32615 (14.7%)	44446 (15.9%)
Cohabitation			
With partner	359 (60.7%)	160735 (72.6%)	201961 (72.0%)
Single	55 (9.3%)	17885 (8.1%)	24172 (8.6%)
Missing ²	177 (29.9%)	42862 (19.4%)	54270 (19.4%)
Smoking status			
Never	293 (49.6%)	121023 (54.6%)	152188 (54.3%)
Former	186 (31.5%)	76153 (34.4%)	96711 (34.5%)
Current	106 (17.9%)	23143 (10.4%)	29724 (10.6%)
Missing ²	6 (1.0%)	1163 (0.5%)	1780 (0.6%)
Morbidity count			
None / One	119 (20.1%)	108494 (49.0%)	140930 (50.3%)
Two	150 (25.4%)	44962 (20.3%)	55724 (19.9%)

Three	116 (19.6%)	29465 (13.3%)	36037 (12.9%)
Four	77 (13.0%)	17297 (7.8%)	20903 (7.5%)
Five+	126 (21.3%)	20903 (9.4%)	26310 (9.4%)
Missing ²	3 (0.5%)	361 (0.2%)	499 (0.2%)
Baseline lithium Rx⁵			
No	296 (50.1%)	204499 (92.3%)	252446 (90.0%)
Yes	261 (44.2%)	83 (0.0%)	417 (0.1%)
Missing ²	34 (5.8%)	16900 (7.6%)	27540 (9.8%)
Baseline cholesterol Rx⁵			
No	425 (71.9%)	171354 (77.4%)	217473 (77.6%)
Yes	161 (27.2%)	48000 (21.7%)	57335 (20.4%)
Missing ²	5 (0.8%)	2128 (1.0%)	5595 (2.0%)
Fasting time			
Less than 8 hours	563 (95.3%)	211768 (95.6%)	267565 (95.4%)
At least 8 hours	24 (4.1%)	9179 (4.1%)	12143 (4.3%)
Missing ²	4 (0.7%)	535 (0.2%)	695 (0.2%)
Body mass index; mean (SD)⁶	28.70 (5.34)	27.54 (4.83)	27.34 (4.78)

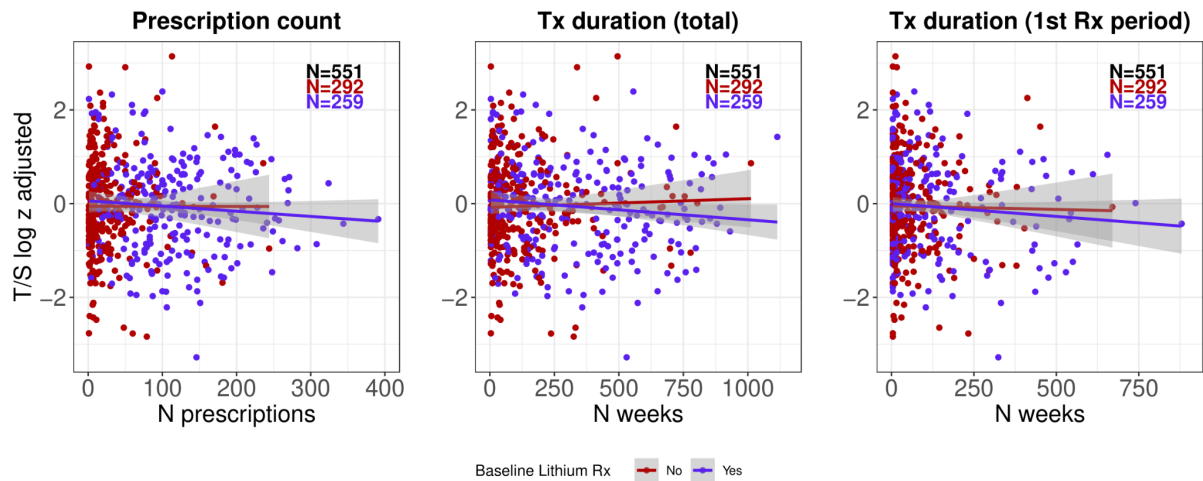
Note: Numbers shown are counts and percentages unless indicated otherwise. SD = standard deviation; GCSEs = general certificate of secondary education; CSE = certificate of secondary education; NVQ = national vocational qualification; HND = higher national diploma; HNC = higher national certificate; Rx = prescription. ¹ Information on age and sex was missing for one participant in the sample without linked primary care data. ² Missing data also includes “do not know”, “prefer not to answer” or “not applicable”. ³ Also includes 'other professional qualifications'. ⁴ Annual household income groups: very low (<£18,000), low (£18,000–£30,999), middle (£31,000–£51,999), high (£52,000–£100,000) and very high (>£100,000). ⁵ Prescriptions refer to *current* medication use at the time of the baseline assessment. ⁶ Missing data for body mass index: $n = 10$, $n = 1344$ and $n = 1751$.

196

197 **Duration of lithium use and telomere length**

198 In the model adjusted for chronological age and sex, there was no evidence that the number of
 199 lithium prescriptions ($N = 569$, $\beta = -0.022$, 95% CI -0.081 to 0.037, $p = 0.47$), the total duration
 200 of use ($N = 569$, $\beta = -0.005$, 95% CI -0.023 to 0.013, $p = 0.57$) or the duration of the first
 201 prescription period ($N = 569$, $\beta = -0.018$, 95% CI -0.051 to 0.015, $p = 0.29$) were associated
 202 with telomere length. Additional adjustment for body mass index, morbidity count, household
 203 income, highest qualification and cohabitation status had no discernible impact on these results
 204 (Table 1). Individuals with a higher prescription count or longer duration of lithium use were
 205 more likely to use lithium at the time of the baseline assessment (Figure 1).

206

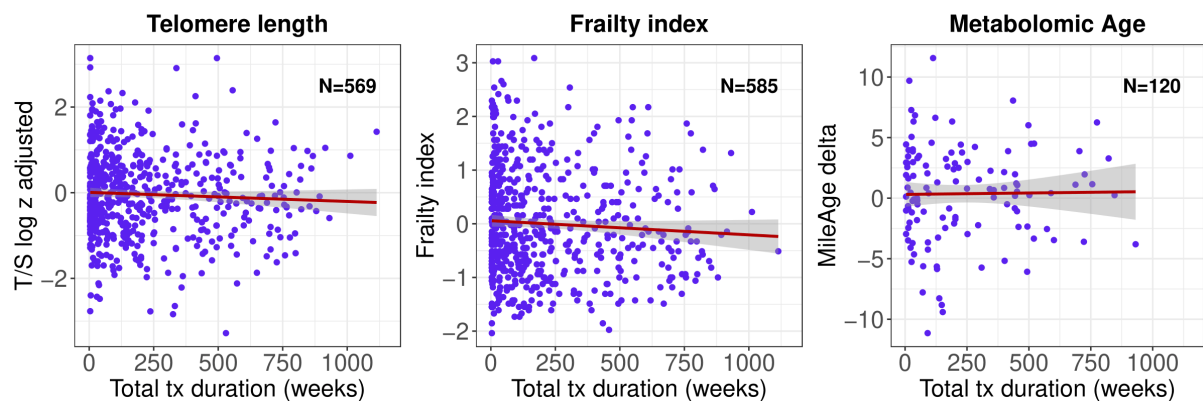


207

208 **Figure 1.** Scatter plots of telomere length (T/S ratio \log_e transformed and Z standardised) by
 209 lithium prescription count, total duration of use, and duration of the first prescription period.
 210 The lines were estimated using ordinary least squares regression, and the shaded areas
 211 correspond to 95% confidence intervals. Lithium use (yes/no) at the time of the baseline
 212 assessment when telomere length was measured is shown in different colours. Individuals
 213 without baseline data on current lithium use are not shown. Tx = treatment; Rx = prescription.
 214

215 Duration of lithium use, frailty and metabolomic age

216 There was no evidence that the duration of lithium use was associated with the frailty index (N
 217 = 585, $\beta = -0.012$, 95% CI -0.030 to 0.006, $p = 0.21$) or the metabolomic ageing clock ($N =$
 218 120, $\beta = 0.030$, 95% CI -0.133 to 0.194, $p = 0.72$) (Figure 2). This finding was consistent across
 219 all measures of the duration of lithium use and adjustment for additional covariates (Table 1).
 220



221

222

223 **Figure 2.** Scatter plots of telomere length (T/S ratio \log_e transformed and Z standardised), the
 224 frailty index, and the metabolomic ageing clock delta by total duration of lithium use. The lines
 225 were estimated using ordinary least squares regression, and the shaded areas correspond to 95%
 226 confidence intervals. Tx = treatment.

Table 2. Associations between the duration of lithium use and biological ageing markers

	Model 1 (adj. for age and sex)				Model 2 (full adjustment)					
	<i>n</i>	Beta	95% CI	<i>p</i>	<i>n</i>	Beta	95% CI	<i>p</i>		
Telomere length										
Rx count	569	-0.022	-0.081	0.037	0.47	567	-0.017	-0.076	0.043	0.58
Total duration	569	-0.005	-0.023	0.013	0.57	567	-0.004	-0.022	0.015	0.71
Duration first Rx	569	-0.018	-0.051	0.015	0.29	567	-0.014	-0.048	0.019	0.40
Frailty index										
Rx count	585	-0.045	-0.104	0.014	0.13	580	-0.043	-0.091	0.004	0.08
Total duration	585	-0.012	-0.030	0.006	0.21	580	-0.013	-0.028	0.001	0.07
Duration first Rx	585	-0.027	-0.060	0.007	0.12	580	-0.021	-0.048	0.007	0.14
Metabolomic age										
Rx count	120	-0.036	-0.590	0.518	0.90	120	-0.022	-0.583	0.540	0.94
Total duration	120	0.030	-0.133	0.194	0.72	120	-0.009	-0.180	0.161	0.91
Duration first Rx	120	0.248	-0.079	0.576	0.14	120	0.208	-0.128	0.543	0.22
Pulse rate										
Rx count	586	-0.061	-0.119	-0.002	0.04	583	-0.058	-0.116	0.0001	0.05
Total duration	586	-0.026	-0.044	-0.008	0.005	583	-0.024	-0.042	-0.006	0.01
Duration first Rx	586	-0.021	-0.055	0.012	0.21	583	-0.022	-0.056	0.011	0.18

Note: The measurement units have been rescaled. The number of prescriptions were analysed in units of 50 prescriptions; the total duration of use and the duration of the first prescription period were expressed in years. Model 1 was adjusted for age and sex; Model 2 was adjusted for age, sex, body mass index, morbidity count, household income, highest qualification and cohabitation status. Rx = prescription; CI = confidence interval.

227

228 **Duration of lithium use and pulse rate**

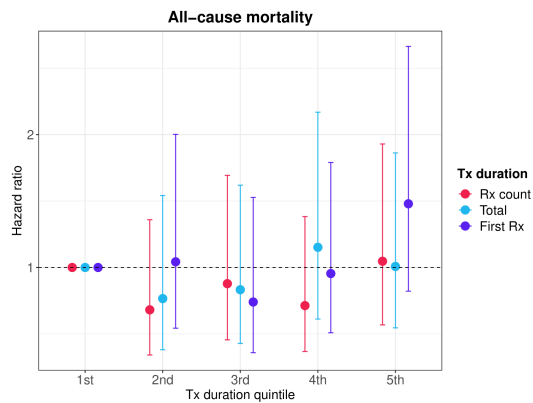
229 To ensure that the lack of statistically significant associations was not due to how we defined
 230 the duration of lithium use, we further tested associations between the duration of lithium use
 231 and pulse rate (Figure S2). The number of lithium prescriptions ($N = 586$, $\beta = -0.061$, 95% CI
 232 -0.119 to -0.002 , $p = 0.04$) and the total duration of lithium use ($N = 586$, $\beta = -0.026$, 95% CI -
 233 0.044 to -0.008 , $p = 0.005$) were both associated with a lower pulse rate (Table 1).

234

235 **Duration of lithium use and all-cause mortality**

236 The median duration of follow-up of censored individuals was 13.71 years (IQR = 1.35 years),
 237 with more than 7686 person-years of follow-up. During this period, 94 deaths were observed.
 238 There was no evidence that the duration of lithium use predicted all-cause mortality.
 239 Comparing individuals in the second to fifth quintile of the distribution of the duration of
 240 lithium use to individuals in the first quintile resulted in no statistically significant differences
 241 in all-cause mortality (lowest $p = 0.08$) (Figure 3).

242



243

244

245 **Figure 3.** Hazard ratios (HR) and 95% confidence intervals from Cox proportional hazards
 246 models for all-cause mortality. Age (in years) was used as the underlying time axis. The model
 247 was adjusted for age and sex. Reference group: individuals in the lowest quintile of the
 248 distribution of the duration of lithium use (prescription count, total duration and duration of the
 249 first prescription period). Tx = treatment; Rx = prescription.

250

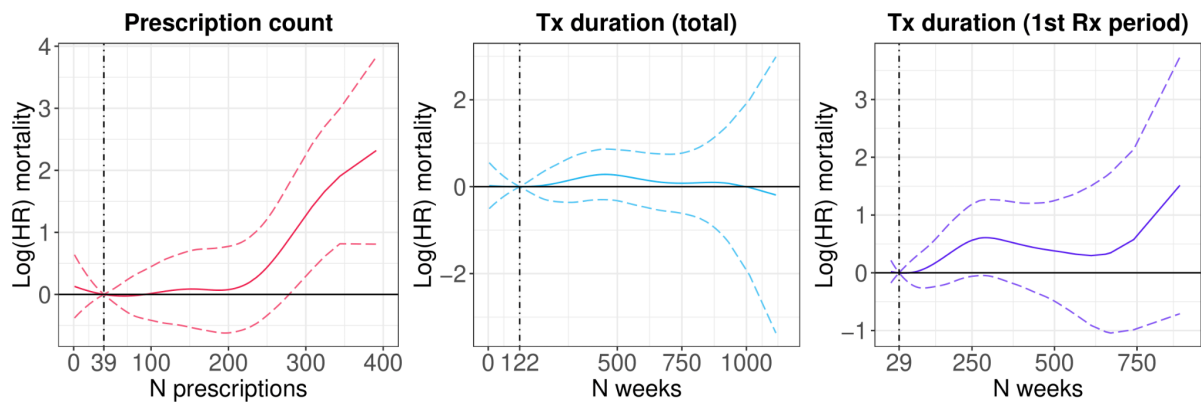
Table 3. Associations between the duration of lithium use and all-cause mortality

		Model 1 (adj. for age and sex)					Model 2 (full adjustment)					
		N _{total}	N _{died}	HR	95% CI	p	N _{total}	N _{died}	HR	95% CI	p	
Rx count												
1st	≤ 7	119	19	Reference			118	19	Reference			
2nd	8-23	118	16	0.68	0.34 1.36	0.28	116	15	0.53	0.26 1.09	0.08	
3rd	24-60	118	19	0.88	0.46 1.69	0.70	117	19	0.74	0.37 1.48	0.40	
4th	61-114	118	18	0.71	0.37 1.38	0.32	118	18	0.68	0.34 1.35	0.27	
5th	≥ 115	118	25	1.05	0.57 1.93	0.88	116	25	0.91	0.48 1.74	0.79	
Total duration												
1st	≤ 22	119	19	Reference			118	19	Reference			
2nd	23-83	118	14	0.77	0.38 1.54	0.45	117	13	0.61	0.29 1.26	0.18	
3rd	84-187	118	19	0.83	0.43 1.62	0.59	115	19	0.74	0.37 1.49	0.40	
4th	188-426	118	21	1.15	0.61 2.17	0.66	118	21	0.95	0.50 1.83	0.88	
5th	≥ 427	118	24	1.01	0.55 1.86	0.98	117	24	0.91	0.48 1.73	0.78	
Duration first Rx												
1st	≤ 4	119	21	Reference			117	20	Reference			
2nd	5-16	118	17	1.04	0.54 2.00	0.90	118	17	0.96	0.49 1.92	0.92	
3rd	17-49	118	13	0.74	0.36 1.53	0.42	117	13	0.71	0.34 1.50	0.37	
4th	50-130	118	19	0.95	0.51 1.79	0.88	117	19	1.05	0.54 2.03	0.90	
5th	≥ 131	118	27	1.48	0.82 2.66	0.19	116	27	1.46	0.80 2.68	0.22	

Note: Hazard ratios and 95% confidence intervals from Cox proportional hazards models for all-cause mortality. Age (in years) was used as the underlying time axis. Model 1 was adjusted for age and sex; Model 2 was adjusted for age, sex, body mass index, morbidity count, household income, highest qualification and cohabitation status. Rx = prescription; HR = hazard ratio; CI = confidence interval.

251

252 Modelling the mortality hazard as a spline function of the duration of lithium use, instead of
253 by quintiles of the distribution, provided little evidence of a statistically significant association
254 between the duration of lithium use and all-cause mortality (Figure 4 and Figure S3). There
255 was, however, some evidence that a prescription count greater than about 300 was associated
256 with a higher mortality risk.
257



258

259

260 **Figure 4.** Log hazard ratios and 95% confidence intervals from Cox proportional hazards
261 models for all-cause mortality. Age (in years) was used as the underlying time axis. The model
262 was adjusted for age and sex. Vertical lines indicate the median of the distribution. Tx =
263 treatment; Rx = prescription.
264

265 Sensitivity analyses

266 Excluding participants with a total duration of lithium use of less than 1 year or less than 4.5
267 years provided little evidence that the duration of lithium use was associated with biological
268 ageing (Table S1 and Table S2). There was some evidence that a longer duration of the first
269 lithium prescription period was associated with a higher MileAge delta, although this finding
270 did not survive multiple testing correction in the fully adjusted model. The duration of lithium
271 use was also not associated with pulse rate in these analyses.
272

273

274 The relationship between telomere length and the duration of lithium use stratified by current
275 antidepressant use at the time of the baseline assessment is shown in Figure S4. Additional
276 adjustment for current antidepressant use had no discernible impact on the analyses of the
277 relationship between the duration of lithium use and biological ageing (Table S3). However,
278 the association between a higher prescription count and a longer total duration of lithium use
and pulse rate was stronger in these analyses.

279 DISCUSSION

280 We examined the relationship between the duration of lithium use and multiple markers of
281 biological ageing, including telomere length, frailty, metabolomic age, and all-cause mortality.
282 Both cross-sectional and prospective analyses provided little evidence of an association
283 between the duration of lithium use and biological ageing or mortality.

284

285 Our findings are inconsistent with most prior studies of the duration of lithium use and telomere
286 length, several of which identified a positive association between lithium and telomere length.
287 Martinsson et al. found that lithium-treated bipolar disorder patients had on average 35% longer
288 telomeres than healthy controls.¹⁷ In the same study, the duration of lithium treatment was
289 positively correlated with telomere length, particularly in patients who had been treated for
290 more than 2.5 years. Pisanu et al.³⁴ and Coutts et al.¹⁹ corroborated these observations,
291 identifying statistically significant associations between chronic lithium treatment and
292 telomere length in patients with bipolar disorder. Squassina et al. also reported a positive
293 correlation between the duration of lithium use and telomere length in 150 bipolar disorder
294 patients who had been treated for more than two years.³⁵ A mechanistic *in vitro* study provided
295 further evidence supporting lithium's putative effect on telomeres by demonstrating that
296 lithium administration to lymphoblastoid cell lines from bipolar disorder patients increased
297 telomere length.¹⁸ Nevertheless, there is some precedent for our findings. Ferensztajn-
298 Rochowiak et al. reported that in a sample of 41 patients with bipolar disorder, the duration of
299 lithium treatment did not correlate with telomere length in peripheral blood leukocytes.³⁶
300 Another *in vitro* study found that administration of lithium to lymphoblastoid cell lines from
301 bipolar disorder patients had no effect on telomere length,³⁷ though it is worth noting that these
302 patients had previously been treated with lithium.

303

304 There are several potential explanations for the observed differences between our findings and
305 those of most prior studies. For example, most clinical studies determined the duration of
306 lithium treatment retrospectively during the study visit, while we derived the duration of
307 lithium use in our study from prescription records. Furthermore, there is some evidence that
308 clinical factors such as bipolar disorder diagnosis, number of episodes, chronicity and severity
309 of illness impact telomere length. The participants in our study likely represent a healthier
310 subset of the population than the patients included in prior clinical studies. Moreover, genetic
311 factors can moderate the effect of lithium on telomere length.¹⁹ Although, we adjusted for
312 several confounders in our analyses, we also found little evidence of any statistical associations

313 in the model adjusted only for chronological age and sex. The sample size of our study ($n =$
314 569) is one of the largest in the field, and we used three definitions of the duration of lithium
315 use to increase the robustness of our findings. In addition, we conducted a sensitivity analysis
316 of pulse rate, which we expected to differ with longer duration of lithium use.³⁸ The observed
317 correlation between the duration of lithium use and a lower pulse rate supports the validity of
318 our measures of the duration of lithium use.

319
320 There has been little prior research on the relationship between lithium use and the other
321 biological ageing markers explored in this study. Okazaki et al. found that bipolar disorder
322 patients who were taking mood stabilisers had a younger epigenetic age, according to Horvath's
323 epigenetic ageing clock, than patients who were not taking mood stabilisers.³⁹ However, an *in*
324 *vitro* study of lymphoblastoid cell lines did not find that administration of lithium impacted the
325 Horvath clock.¹⁸ We found no evidence of an association between the duration of lithium use
326 and metabolomic age in our study. However, it is worth noting that epigenetic and metabolomic
327 age are not strongly correlated.⁴⁰ We also explored the relationship between the duration of
328 lithium use and frailty, which is a measure of age-related health deficit accumulation. While
329 some evidence suggests that frailty and telomere length are not strongly linked,⁴¹ frailty is a
330 key marker of biological ageing and physical ill-health.^{42,43} Our study provided no evidence of
331 a statistically significant association between the duration of lithium use and frailty. Taken
332 together, these findings suggest that the lack of association between the duration of lithium use
333 and biological ageing – at least in our sample – was not specific to telomere length.

334
335 The *duration* of lithium use was not linked to all-cause mortality in our study. Multiple
336 observational studies have previously shown that lithium use is associated with a lower
337 mortality risk. For example, a cohort study of 826 patients in Finland found that lithium
338 treatment, compared to no lithium use, was associated with a lower all-cause mortality risk.⁴⁴
339 Another cohort study in Taiwan found that lithium was associated with the lowest all-cause
340 mortality risk in bipolar disorder patients, relative to other mood stabiliser treatments.⁴⁵ A
341 recent study in the UK Biobank also found that lithium treatment was associated with a lower
342 all-cause mortality risk than treatment with antipsychotics.⁴⁶ However, it is important to note
343 that we examined the duration of lithium use, not whether patients were treated versus not
344 treated with lithium, which prior studies examined. As such, our findings suggest that there
345 may not be a link between longer duration of lithium use and all-cause mortality in a
346 community-based, real-world sample. These findings do not imply that lithium use (yes/no) is

347 not linked to all-cause mortality, and they do not invalidate findings from clinical trials where
348 lithium adherence is more controlled and all-cause mortality.

349

350 **Limitations**

351 We acknowledge certain limitations to our study. The UK Biobank primarily recruited
352 individuals between the ages of 40 to 69 years, limiting the conclusions drawn from our
353 findings to middle-aged and older adults. There is evidence of a healthy volunteer participation
354 bias in the UK Biobank,^{47,48} which could mean that the participants in our study were healthier
355 than the patients included in prior clinical studies. The observational nature of our study
356 precludes any causal inferences, and residual confounding factors may exist despite our efforts
357 to account for relevant covariates. The duration of lithium use was derived from primary care
358 prescription records. Prescriptions may not perfectly reflect medication use and there is some
359 evidence that, despite the need for regular blood tests, adherence to lithium is poor in clinical
360 practice;⁴⁹ furthermore, prescription dates are a proxy of date of use. Nonetheless, we derived
361 and tested three different definitions of the duration of lithium use to be as robust as possible
362 within these constraints. Telomere length was measured using leukocyte DNA, and findings
363 might differ from telomere length measured in other tissues. However, prior evidence suggests
364 that leukocyte telomere length correlates well with telomere length in other tissues.⁵⁰ Finally,
365 we could only examine *average* telomere length and were unable to evaluate whether the
366 duration of lithium use was associated with variability in telomere length, which may be more
367 important for telomere dysfunction and biological ageing.²⁶

368

369 **Conclusion**

370 Our findings, in a larger sample, challenge prior research on the relationship between the
371 duration of lithium use and telomere length. Given that we also did not observe statistically
372 significant associations with other biological ageing markers such as frailty and metabolomic
373 age, nor with all-cause mortality, our findings suggest that the potential anti-ageing effects of
374 lithium do not differ by duration of use. Our findings encourage further scientific inquiry into
375 the complex interplay between lithium medication, biological ageing and lifespan.

376 **ETHICS**

377 Ethical approval for the UK Biobank study has been granted by the National Information
378 Governance Board for Health and Social Care and the NHS North West Multicentre Research
379 Ethics Committee (11/NW/0382). No project-specific ethical approval is needed.

380

381 **AUTHORSHIP CONTRIBUTIONS**

382 JM conceived the idea of the study, acquired the data, carried out the statistical analysis,
383 interpreted the findings and co-wrote the manuscript. WLEW identified the lithium medication
384 codes, pre-processed the data to define duration of lithium use, interpreted the findings and co-
385 wrote the manuscript. TRP, AHY, GSD and CML interpreted the findings and reviewed the
386 manuscript. All authors read and approved the final manuscript.

387

388 **ACKNOWLEDGMENTS**

389 This study was funded by the National Institute for Health and Care Research (NIHR)
390 Maudsley Biomedical Research Centre at South London and Maudsley NHS Foundation Trust
391 and King's College London. The views expressed are those of the authors and not necessarily
392 those of the NHS, the NIHR or the Department of Health and Social Care. WLEW is supported
393 by the National University of Singapore President's Graduate Fellowship. TRP is supported by
394 the MRC (UKRI) as part of a New Investigator Research Grant [MR/W028018/1]. GSD is
395 supported by the Ministry of Education, Singapore, under its Academic Research Fund Tier 3
396 Award (MOE2017-T3-1-002). This research has been conducted using data from UK Biobank,
397 a major biomedical database. Data access permission has been granted under UK Biobank
398 application 45514. All analyses were supported by: King's College London. (2023). King's
399 Computational Research, Engineering and Technology Environment (CREATE). Retrieved
400 May 24, 2023, from <https://doi.org/10.18742/rnvf-m076>

401

402 **FINANCIAL DISCLOSURES**

403 AHY declares the following: paid lectures and advisory boards for companies with drugs used
404 in affective and related disorders (Flow Neuroscience, Novartis, Roche, Janssen, Takeda,
405 Noema pharma, Compass, Astrazenaca, Boehringer Ingelheim, Eli Lilly, LivaNova, Lundbeck,
406 Sunovion, Servier, Livanova, Janssen, Allegan, Bionomics, Sumitomo Dainippon Pharma,
407 Sage and Neurocentrx); principal investigator in the Restore-Life VNS registry study funded
408 by LivaNova; principal investigator on "ESKETINTRD3004: An Open-label, Long-term,
409 Safety and Efficacy Study of Intranasal Esketamine in Treatment-resistant Depression";

410 principal investigator on “The Effects of Psilocybin on Cognitive Function in Healthy
411 Participants”; principal investigator on “The Safety and Efficacy of Psilocybin in Participants
412 with Treatment-Resistant Depression (P-TRD)”; principal investigator on “A Double-Blind,
413 Randomized, Parallel-Group Study with Quetiapine Extended Release as Comparator to
414 Evaluate the Efficacy and Safety of Seltorexant 20 mg as Adjunctive Therapy to
415 Antidepressants in Adult and Elderly Patients with Major Depressive Disorder with Insomnia
416 Symptoms Who Have Responded Inadequately to Antidepressant Therapy” (Janssen);
417 principal investigator on “An Open-label, Long-term, Safety and Efficacy Study of Aticaprant
418 as Adjunctive Therapy in Adult and Elderly Participants with Major Depressive Disorder
419 (MDD)” (Janssen); principal investigator on “A Randomized, Double-blind, Multicentre,
420 Parallel-group, Placebo-controlled Study to Evaluate the Efficacy, Safety, and Tolerability of
421 Aticaprant 10 mg as Adjunctive Therapy in Adult Participants with Major Depressive Disorder
422 (MDD) with Moderate-to-severe Anhedonia and Inadequate Response to Current
423 Antidepressant Therapy”; principal investigator on “A Study of Disease Characteristics and
424 Real-life Standard of Care Effectiveness in Patients with Major Depressive Disorder (MDD)
425 With Anhedonia and Inadequate Response to Current Antidepressant Therapy Including an
426 SSRI or SNR” (Janssen); UK chief investigator for Compass COMP006 & COMP007 studies;
427 UK chief investigator for Novartis MDD study MIJ821A12201; grant funding (past and
428 present) from NIMH (USA), CIHR (Canada), NARSAD (USA), Stanley Medical Research
429 Institute (USA), MRC (UK), Wellcome Trust (UK), Royal College of Physicians (Edin), BMA
430 (UK), UBC-VGH Foundation (Canada), WEDC (Canada), CCS Depression Research Fund
431 (Canada), MSFHR (Canada), NIHR (UK), Janssen (UK) and EU Horizon 2020. No
432 shareholdings in pharmaceutical companies. CML sits on the scientific advisory board for
433 Myriad Neuroscience, has received speaker fees from SYNLAB, and consultancy fees from
434 UCB. JM, WLEW, TRP and GSD declare no financial conflict of interest.

435

436 **DATA SHARING STATEMENT**

437 UK Biobank data used are available to all *bona fide* researchers for health-related research that
438 is in the public interest, subject to an application process and approval criteria. Study materials
439 are publicly available online at <http://www.ukbiobank.ac.uk>.

440 REFERENCES

- 441 1. National Institute for Health Care Excellence. Bipolar disorder: assessment and
442 management. 2020.
- 443 2. Cleare A, Pariante C, Young A, et al. Evidence-based guidelines for treating depressive
444 disorders with antidepressants: A revision of the 2008 British Association for
445 Psychopharmacology guidelines. *Journal of Psychopharmacology* 2015; **29**(5): 459-525.
- 446 3. Gadelrab R, Hampsey E, Strawbridge R, Taylor RH, Ulrichsen A, Young AH.
447 Comparing measurements of lithium treatment efficacy in people with bipolar disorder:
448 systematic review and meta-analysis. *BJPsych Open* 2023; **9**(3): e98.
- 449 4. Malhi GS, Tanious M, Das P, Coulston CM, Berk M. Potential Mechanisms of Action
450 of Lithium in Bipolar Disorder. *CNS Drugs* 2013; **27**(2): 135-53.
- 451 5. Salarda EM, Zhao NO, Lima CN, Fries GR. Mini-review: The anti-aging effects of
452 lithium in bipolar disorder. *Neuroscience Letters* 2021; **759**: 136051.
- 453 6. López-Otín C, Blasco MA, Partridge L, Serrano M, Kroemer G. Hallmarks of aging:
454 An expanding universe. *Cell* 2023; **186**(2): 243-78.
- 455 7. Maurer IC, Schippel P, Volz H-P. Lithium-induced enhancement of mitochondrial
456 oxidative phosphorylation in human brain tissue. *Bipolar Disorders* 2009; **11**(5): 515-22.
- 457 8. de Sousa RT, Streck EL, Zanetti MV, et al. Lithium increases leukocyte mitochondrial
458 complex I activity in bipolar disorder during depressive episodes. *Psychopharmacology* 2015;
459 **232**(1): 245-50.
- 460 9. Machado-Vieira R, Andreazza AC, Viale CI, et al. Oxidative stress parameters in
461 unmedicated and treated bipolar subjects during initial manic episode: A possible role for
462 lithium antioxidant effects. *Neuroscience Letters* 2007; **421**(1): 33-6.
- 463 10. Khairova R, Pawar R, Salvatore G, et al. Effects of lithium on oxidative stress
464 parameters in healthy subjects. *Mol Med Rep* 2012; **5**(3): 680-2.
- 465 11. McColl G, Killilea DW, Hubbard AE, Vantipalli MC, Melov S, Lithgow GJ.
466 Pharmacogenetic Analysis of Lithium-induced Delayed Aging in *Caenorhabditis elegans*.
467 *Journal of Biological Chemistry* 2008; **283**(1): 350-7.
- 468 12. Castillo-Quan Jorge I, Li L, Kinghorn Kerri J, et al. Lithium Promotes Longevity
469 through GSK3/NRF2-Dependent Hormesis. *Cell Reports* 2016; **15**(3): 638-50.
- 470 13. Rossiello F, Jurk D, Passos JF, d'Adda di Fagnana F. Telomere dysfunction in ageing
471 and age-related diseases. *Nature Cell Biology* 2022; **24**(2): 135-47.

- 472 14. Colpo GD, Leffa DD, Köhler CA, Kapczinski F, Quevedo J, Carvalho AF. Is bipolar
473 disorder associated with accelerating aging? A meta-analysis of telomere length studies.
474 *Journal of Affective Disorders* 2015; **186**: 241-8.
- 475 15. Darrow SM, Verhoeven JE, Révész D, et al. The Association Between Psychiatric
476 Disorders and Telomere Length: A Meta-Analysis Involving 14,827 Persons. *Psychosomatic*
477 *Medicine* 2016; **78**(7): 776-87.
- 478 16. Huang Y-C, Wang L-J, Tseng P-T, Hung C-F, Lin P-Y. Leukocyte telomere length in
479 patients with bipolar disorder: An updated meta-analysis and subgroup analysis by mood status.
480 *Psychiatry Research* 2018; **270**: 41-9.
- 481 17. Martinsson L, Wei Y, Xu D, et al. Long-term lithium treatment in bipolar disorder is
482 associated with longer leukocyte telomeres. *Translational Psychiatry* 2013; **3**(5): e261-e.
- 483 18. Fries GR, Zamzow MJ, Colpo GD, et al. The anti-aging effects of lithium in
484 lymphoblastoid cell lines from patients with bipolar disorder and controls. *Journal of*
485 *Psychiatric Research* 2020; **128**: 38-42.
- 486 19. Coutts F, Palmos AB, Duarte RRR, et al. The polygenic nature of telomere length and
487 the anti-ageing properties of lithium. *Neuropsychopharmacology* 2019; **44**(4): 757-65.
- 488 20. Mutz J, Lewis CM. Telomere Length Associations With Clinical Diagnosis, Age, and
489 Polygenic Risk Scores for Anxiety Disorder, Depression, and Bipolar Disorder. *Biological*
490 *Psychiatry Global Open Science* 2023; **3**(4): 1012-20.
- 491 21. Bountziouka V, Musicha C, Allara E, et al. Modifiable traits, healthy behaviours, and
492 leukocyte telomere length: a population-based study in UK Biobank. *The Lancet Healthy*
493 *Longevity* 2022; **3**(5): e321-e31.
- 494 22. Luo S, Wong ICK, Chui CSL, et al. Effects of putative metformin targets on phenotypic
495 age and leukocyte telomere length: a mendelian randomisation study using data from the UK
496 Biobank. *The Lancet Healthy Longevity* 2023; **4**(7): e337-e44.
- 497 23. Bycroft C, Freeman C, Petkova D, et al. The UK Biobank resource with deep
498 phenotyping and genomic data. *Nature* 2018; **562**(7726): 203-9.
- 499 24. Wong WL, Fabbri C, Laplace B, et al. The Effects of CYP2C19 Genotype on Proxies
500 of SSRI Antidepressant Response in the UK Biobank. *Pharmaceuticals*, 2023. (accessed.
- 501 25. Codd V, Denniff M, Swinfield C, et al. Measurement and initial characterization of
502 leukocyte telomere length in 474,074 participants in UK Biobank. *Nature Aging* 2022; **2**(2):
503 170-9.

- 504 26. Lai T-P, Wright WE, Shay JW. Comparison of telomere length measurement methods.
505 *Philosophical Transactions of the Royal Society B: Biological Sciences* 2018; **373**(1741):
506 20160451.
- 507 27. Williams DM, Jylhävä J, Pedersen NL, Hägg S. A Frailty Index for UK Biobank
508 Participants. *The Journals of Gerontology: Series A* 2018; **74**(4): 582-7.
- 509 28. Mutz J, Choudhury U, Zhao J, Dregan A. Frailty in individuals with depression, bipolar
510 disorder and anxiety disorders: longitudinal analyses of all-cause mortality. *BMC Medicine*
511 2022; **20**(1): 274.
- 512 29. Würtz P, Kangas AJ, Soininen P, Lawlor DA, Davey Smith G, Ala-Korpela M.
513 Quantitative Serum Nuclear Magnetic Resonance Metabolomics in Large-Scale Epidemiology:
514 A Primer on -Omic Technologies. *American Journal of Epidemiology* 2017; **186**(9): 1084-96.
- 515 30. Quinlan JR. Learning with continuous classes. 5th Australian joint conference on
516 artificial intelligence; 1992: World Scientific; 1992. p. 343-8.
- 517 31. Kuhn M, Johnson K. Regression Trees and Rule-Based Models. In: Kuhn M, Johnson
518 K, eds. Applied Predictive Modeling. New York, NY: Springer New York; 2013: 173-220.
- 519 32. Mutz J, Lewis CM. Lifetime depression and age-related changes in body composition,
520 cardiovascular function, grip strength and lung function: sex-specific analyses in the UK
521 Biobank. *Aging* 2021; **13**(13): 17038-79.
- 522 33. Mutz J, Young AH, Lewis CM. Age-related changes in physiology in individuals with
523 bipolar disorder. *Journal of Affective Disorders* 2022; **296**: 157-68.
- 524 34. Pisanu C, Congiu D, Manchia M, et al. Differences in telomere length between patients
525 with bipolar disorder and controls are influenced by lithium treatment. *Pharmacogenomics*
526 2020; **21**(8): 533-40.
- 527 35. Squassina A, Pisanu C, Congiu D, et al. Leukocyte telomere length positively correlates
528 with duration of lithium treatment in bipolar disorder patients. *European*
529 *Neuropsychopharmacology* 2016; **26**(7): 1241-7.
- 530 36. Ferensztajn-Rochowiak E, Hołysz H, Kurczewska E, et al. Decreased leucocyte
531 telomere length in male patients with chronic bipolar disorder: lack of effect of long-term
532 lithium treatment. *Acta Neuropsychiatrica* 2021; **33**(6): 299-306.
- 533 37. Squassina A, Meloni A, Congiu D, et al. Analysis on in vitro effect of lithium on
534 telomere length in lymphoblastoid cell lines from bipolar disorder patients with different
535 clinical response to long-term lithium treatment. *Human Genomics* 2022; **16**(1): 45.
- 536 38. Mehta N, Vannozzi R. Lithium-induced electrocardiographic changes: A complete
537 review. *Clinical Cardiology* 2017; **40**(12): 1363-7.

- 538 39. Okazaki S, Numata S, Otsuka I, et al. Decelerated epigenetic aging associated with
539 mood stabilizers in the blood of patients with bipolar disorder. *Translational Psychiatry* 2020;
540 **10**(1): 129.
- 541 40. Robinson O, Chadeau Hyam M, Karaman I, et al. Determinants of accelerated
542 metabolomic and epigenetic aging in a UK cohort. *Aging Cell* 2020; **19**(6): e13149.
- 543 41. Araújo Carvalho AC, Tavares Mendes ML, da Silva Reis MC, Santos VS, Tanajura
544 DM, Martins-Filho PRS. Telomere length and frailty in older adults—A systematic review and
545 meta-analysis. *Ageing Research Reviews* 2019; **54**: 100914.
- 546 42. Ji L, Jazwinski SM, Kim S. Frailty and Biological Age. *Ann Geriatr Med Res* 2021;
547 **25**(3): 141-9.
- 548 43. Mitnitski A, Collerton J, Martin-Ruiz C, et al. Age-related frailty and its association
549 with biological markers of ageing. *BMC Medicine* 2015; **13**(1): 161.
- 550 44. Toffol E, Hätönen T, Tanskanen A, et al. Lithium is associated with decrease in all-
551 cause and suicide mortality in high-risk bipolar patients: A nationwide registry-based
552 prospective cohort study. *Journal of Affective Disorders* 2015; **183**: 159-65.
- 553 45. Chen P-H, Tsai S-Y, Chen P-Y, et al. Mood stabilizers and risk of all-cause, natural,
554 and suicide mortality in bipolar disorder: A nationwide cohort study. *Acta Psychiatrica
555 Scandinavica* 2023; **147**(3): 234-47.
- 556 46. Araldi E, Jutzeler CR, Ristow M. Lithium treatment extends human lifespan: findings
557 from the UK Biobank. *Aging (Albany NY)* 2023; **15**(2): 421-40.
- 558 47. Fry A, Littlejohns TJ, Sudlow C, et al. Comparison of Sociodemographic and Health-
559 Related Characteristics of UK Biobank Participants With Those of the General Population.
560 *American Journal of Epidemiology* 2017; **186**(9): 1026-34.
- 561 48. Schoeler T, Speed D, Porcu E, Pirastu N, Pingault J-B, Kutalik Z. Participation bias in
562 the UK Biobank distorts genetic associations and downstream analyses. *Nature Human
563 Behaviour* 2023; **7**(7): 1216-27.
- 564 49. Johnson R, McFarland B. Lithium use and discontinuation in a health maintenance
565 organization. *American Journal of Psychiatry* 1996; **153**(8): 993-1000.
- 566 50. Demanelis K, Jasmine F, Chen LS, et al. Determinants of telomere length across human
567 tissues. *Science* 2020; **369**(6509): eaaz6876.