

1 **Salivary Biomarkers as Pioneering Indicators for Diagnosis and Severity** 2 **Stratification of Pediatric Long COVID**

3

4 Sylwia D. Tyrkalska^{1,2,3,#}, Fernando Pérez-Sanz^{2,#}, Lorena Franco-Martínez⁴, Camila Peres-
5 Rubio⁴, Asta Tvarijonaviciute⁴, Silvia Martínez-Subiela⁴, María Méndez-Hernández^{5,6}, Alba
6 González-Aumatell^{5,6}, Clara Carreras-Abad^{5,6}, Èlia Domènech-Marçal^{5,6}, José J. Cerón⁴, María L.
7 Cayuela^{2,3,7,*}, Victoriano Mulero^{1,2,3,*}, Sergio Candel^{1,2,3,*}

8

9 ¹Grupo de Inmunidad, Inflamación y Cáncer, Departamento de Biología Celular e Histología,
10 Facultad de Biología, Universidad de Murcia, 30100 Murcia, Spain.

11 ²Instituto Murciano de Investigación Biosanitaria (IMIB)-Pascual Parrilla, 30120 Murcia, Spain.

12 ³Centro de Investigación Biomédica en Red de Enfermedades Raras (CIBERER), Instituto de
13 Salud Carlos III, 28029 Madrid, Spain.

14 ⁴Laboratorio Interdisciplinar de Análisis Clínicos, Campus Mare Nostrum, Facultad de
15 Veterinaria, Universidad de Murcia (Interlab-UMU), 30100 Murcia, Spain.

16 ⁵Unidad de Covid Persistente Pediátrico. Servicio de Pediatría, Hospital Universitario Germans
17 Trias i Pujol, 08916 Badalona, Spain.

18 ⁶Departamento de Pediatría, Obstetricia y Ginecología, Medicina Preventiva y Salud Pública,
19 Facultad de Medicina, Universitat Autònoma de Barcelona, 08193 Cerdanyola del Vallès, España.

20 ⁷Grupo de Telomerasa, Cáncer y Envejecimiento, Servicio de Cirugía, Hospital Clínico
21 Universitario Virgen de la Arrixaca, 30120 Murcia, Spain.

22

23 #These authors contributed equally.

24 *To whom correspondence should be sent at: marial.cayuela@carm.es (MLC), vmulero@um.es
25 (VM), scandel@um.es (SC).

26

27 **ABSTRACT**

28 Long COVID, or post-acute sequelae of SARS-CoV-2 infection (PASC), manifests as
29 persistent and often debilitating symptoms enduring well beyond the initial COVID-19 infection.
30 Presently, a specific diagnostic test or definitive biomarker set for confirming long COVID is
31 lacking, relying instead on the protracted presence of symptoms post-acute infection. In this study,
32 we examined 105 saliva samples (49 from children with long COVID and 56 controls), revealing
33 significant alterations in salivary biomarkers. Pediatric long COVID exhibited increased oxidant
34 biomarkers, decreased antioxidant, immune response, and stress-related biomarkers. Correlation
35 analyses unveiled distinct patterns between biomarkers in long COVID and controls. Notably, a
36 multivariate logistic regression pinpointed TOS, ADA2, total proteins, and AOPP as pivotal
37 variables, culminating in a remarkably accurate predictive model distinguishing long COVID from
38 controls. Furthermore, total proteins and ADA1 were instrumental in discerning between mild and
39 severe long COVID symptoms. This research sheds light on the potential clinical utility of salivary
40 biomarkers in diagnosing and categorizing the severity of pediatric long COVID. It also lays the
41 groundwork for future investigations aimed at unraveling the prognostic value of these biomarkers
42 in predicting the trajectory of long COVID in affected individuals.

43

44

45 **Keywords:** Pediatric long COVID, Salivary biomarkers, Predictive models, Bioinformatics.

46

47

48

49

50 INTRODUCTION

51 The novel betacoronavirus severe acute respiratory syndrome coronavirus 2 (SARS-CoV-
52 2) was first identified in Wuhan (China) by the end of 2019 (Zhu, Zhang et al. 2020), and it rapidly
53 spread worldwide causing the coronavirus disease 2019 (COVID-19) global pandemic that was
54 declared by the World Health Organization (WHO) on March 11th 2020 (Cucinotta and Vanelli
55 2020) and that has devastated the world for years.

56 COVID-19 is well known, including a huge variety of symptoms that normally appear four
57 to five days after the moment a person first become infected, ranging from mild symptoms to
58 critical or possibly fatal illness (Gandhi, Lynch et al. 2020, Grant, Geoghegan et al. 2020). Thus,
59 the most common symptoms are fever, dry cough, sore throat, muscle and joint pain, fatigue,
60 headaches, anosmia, ageusia, nasal congestion and runny nose, diarrhea, eye irritation, and
61 breathing difficulties in moderate to severe cases (Grant, Geoghegan et al. 2020, Wiersinga,
62 Rhodes et al. 2020). Although it seems clear that several factors, such as the health status of the
63 patients prior to infection or the type of SARS-CoV-2 variant contracted, influence the severity of
64 the symptoms (Dao, Hoang et al. 2021, Inui, Fujikawa et al. 2022, Tyrkalska, Martinez-Lopez et
65 al. 2022, Yoon, Lee et al. 2023), the frequent appearance of totally different disease outcomes in
66 apparently similar patients is still not understood at all. But it is even more difficult to understand
67 why, while the mentioned COVID-19 acute symptoms usually disappear within the next few
68 weeks after infection in most subjects, many acute COVID-19 convalescents experience persistent
69 symptoms after the acute infection that has been termed as long COVID, post-COVID-19
70 syndrome, post-acute COVID-19 syndrome (PACS), post-COVID-19 condition, chronic COVID
71 syndrome (CCS), or post-acute sequelae of COVID-19 (PASC) (Greenhalgh, Knight et al. 2020,
72 Baig 2021). Even though the World Health Organization (WHO) proposed a clinical definition for
73 post-COVID-19 through a Delphi consensus in October 2021 stating that it generally occurs three
74 months after the onset of COVID-19, with symptoms lasting at least two months and not explained
75 by an alternative (Soriano, Murthy et al. 2022), unfortunately, there is no consensus yet and,
76 therefore, the nomenclature, definition, epidemiology, pathogenesis, and mechanism of long
77 COVID are still unclear. Furthermore, as a consequence of this vagueness the prevalence of long
78 COVID is difficult to estimate, as it depends on the syndrome definition used, the time period
79 taken into consideration in the study, and the study population, with multiple studies showing

80 percentages of SARS-CoV-2-infected subjects with long-term symptoms that range from less than
81 a 15% to over a 50% (Blomberg, Mohn et al. 2021, Taquet, Dercon et al. 2021). All these gaps in
82 knowledge of the disease, together with the difficulty in differentiating the symptoms of long
83 COVID from those of a normal, prolonged convalescence, or of other post-infection syndromes
84 triggered by infection and immune activation, such as post-viral fatigue (Behan and Behan 1988),
85 makes long COVID to be a diagnosis of exclusion (Leviner 2021). In any case, the main symptoms
86 that are usually attributed to long COVID include extreme fatigue, post-exertional malaise,
87 cognitive dysfunction, headaches, tinnitus, palpitations, chest pains, shortness of breath, sore
88 throat, long lasting cough, joint and muscle pain, feverishness, ageusia or dysgeusia, anosmia or
89 parosmia, diarrhoea, sleep difficulties, skin rash, and mental health problems such as depression
90 or changes in mood (Yelin, Wirtheim et al. 2020, Al-Aly, Xie et al. 2021, Davis, Assaf et al. 2021,
91 Lopez-Leon, Wegman-Ostrosky et al. 2021). But all these uncertainties and long-term symptoms
92 of COVID-19, many of them with disabling consequences, are even more dramatic when the
93 patients who suffer from them are children, as they are in crucial stages of their development.
94 Although the severe forms of acute COVID-19 are less common in children than in adults (Chua,
95 Shah et al. 2021), and most of the published research on long-COVID primarily focuses on adult
96 populations, recent meta-analyses have revealed the presence of more than 40 long COVID
97 symptoms in children and adolescents, with a prevalence of one or more of these symptoms more
98 than 4 weeks following a SARS-CoV-2 infection of 25.24% (Lopez-Leon, Wegman-Ostrosky et
99 al. 2022). According to other more worrying studies, the prevalence of pediatric long COVID
100 could even reach 66% (Fainardi, Meoli et al. 2022). In children and adolescents, the most common
101 long-term symptoms and percentage of prevalence associated are mood symptoms (e.g., sadness,
102 tension, anger, depression, and anxiety) (16.50%), fatigue (9.66%), sleep disorders (8.42%),
103 headache (7.84%), respiratory symptoms (7.62%), nasal congestion (7.53%), and cognitive
104 symptoms (e.g., less concentration, learning difficulties, confusion, and memory loss) (6.27%)
105 (Gonzalez-Aumatell, Bovo et al. 2022, Lopez-Leon, Wegman-Ostrosky et al. 2022).

106 Considering all the above, it is clear that the elaboration of novel strategies and clinical
107 guidelines for the prevention, diagnosis, follow-up, and rehabilitation of long COVID, particularly
108 in children, is essential and for this purpose the study of possible biomarkers for this disease is of
109 great interest. These biomarkers should ideally: (1) be measured in biological samples that are easy
110 to collect and preferably by non-invasive methods, such as saliva; (2) be related with physiological

111 pathways that are altered in COVID-19; and (3) be measured with technology platforms and
112 optimized protocols for rapid analysis of the biomarkers. Saliva is an extracellular biofluid with
113 multiple biomedical applications, with the advantage that it is easy, safe, cheap, and quick to
114 collect, without any pain or stress (Yoshizawa, Schafer et al. 2013). Saliva has often been
115 considered as a ‘mirror of the body’, since it is an outstanding surrogate medium that cannot reflect
116 only the physiological and physiopathological state of the oral cavity, but also of the whole
117 organism (Lee and Wong 2009). Although human saliva comprises 99.5% water, it presents a
118 complex composition including many important substances, being enzymes, proteins,
119 immunoglobulins, DNA and RNA of host origin, bacteria and bacterial products, host cells, steroid
120 hormones, ions, and volatile compounds, the main salivary diagnostic analytes (Zhang, Xiao et al.
121 2009).

122 Among the physiological pathways that can be analyzed in saliva, there are biomarkers of
123 redox status, immune response, and stress. Given that oxidative stress has been associated with
124 multiple human diseases (Vona, Pallotta et al. 2021), the measurement of biomarkers that reflect
125 the redox status of the individuals can be useful when studying the pathogenesis of a disease. Some
126 of the most used salivary biomarkers to measure this are the total oxidant status (TOS), the
127 advanced oxidation protein products (AOPP), the derivatives of reactive oxygen metabolites (d-
128 ROMs), the levels of Trolox equivalent antioxidant capacity in the hydrophilic fraction (TEACH),
129 the cupric reducing antioxidant capacity (CUPRAC), and the ferric reducing ability of plasma
130 (FRAP) (Tvarijonaviciute, Aznar-Cayueta et al. 2018, Rubio and Cerón 2021). Regarding the
131 evaluation of the immune response, adenosine deaminase (ADA) and its isoenzymes, ADA1 and
132 ADA2, ferritin, and total proteins are particularly interesting. The level of ADA enzymatic activity
133 in serum reflects the cell-mediated immunity (Baganha, Pêgo et al. 1990) because, in lymphoid
134 tissues, ADA participates in mononuclear cell maturation from monocyte to macrophage, as well
135 as in the differentiation of B and T lymphocytes (Sullivan, Osborne et al. 1977, MacDermott,
136 Tritsch et al. 1980). Thus, the serum level of ADA is considered as a biomarker of situations with
137 high levels of circulating T lymphocytes (Calis, Ates et al. 2005) and chronic inflammation
138 (Mishra, Gupta et al. 1994), with significant increases in infection (Vijayamahantesh, Amit et al.
139 2016), inflammation (Santosh, Renukananda et al. 2016), malignancies (Ebrahimi-Rad, Khatami
140 et al. 2018), and immunomediated disorders (Sari, Taysi et al. 2003). Importantly, it has already
141 been demonstrated that total ADA (tADA) and its isoenzymes ADA1 and ADA2 can be measured

142 accurately in saliva samples, even after the chemical inactivation of SARS-CoV-2, and that their
143 levels are significantly increased in saliva of COVID-19 patients compared to healthy controls
144 (Franco-Martínez, Tecles et al. 2021). Also important for monitoring the immune response is
145 serum ferritin which, besides its role as an iron storage protein, has also been described as an
146 essential molecule in the immune system with immunosuppressive and pro-inflammatory effects
147 (Sharif, Vieira Borba et al. 2018). Hence, a high level of ferritin in serum is considered as a marker
148 of inflammatory, autoimmune, malignant, or infectious status, including COVID-19 (Zandman-
149 Goddard and Shoenfeld 2007, Vargas-Vargas and Cortés-Rojo 2020). Interestingly, ferritin levels
150 are increased in saliva of COVID-19 patients and, even more important, those levels directly
151 correlate with the severity of the disease (Franco-Martínez, Cerón et al. 2021). Levels of total
152 proteins in saliva are known to be significantly increased in multiple diseases (Shaila, Pai et al.
153 2013, Masters, Noyce et al. 2015), which can make it a biomarker of interest. Regarding
154 biomarkers of stress, the measurement of salivary alpha-amylase (sAA) levels can also be very
155 informative, since it is secreted by the parotid gland in response to sympathetic-adrenal-medullary
156 system and increases in psychological and intense physical stress situations (Nater and Rohleder
157 2009). Indeed, sAA levels are increased in COVID-19 patients, positively correlating with their
158 mental stress scores (Deneva, Ianakiev et al. 2022).

159 The objective of this work was to study the changes in the levels of a panel of different
160 biomarkers measured in saliva, able to provide information about redox status, immune response,
161 and stress of children with long COVID, and the correlations between these biomarkers as well as
162 between them and multiple demographic/clinical parameters. Based on this data, we have
163 developed predictive models to determine whether the measurement of these salivary biomarkers
164 would be enough to reliably discriminate between children with long COVID and healthy controls,
165 and between children with long COVID who present a severe form of the disease and those others
166 who only have mild symptoms. This information could be of interest for a better understanding of
167 pediatric long COVID, and to develop novel strategies that facilitate an early treatment that reduces
168 the sequelae of the disease.

169

170 **RESULTS**

171 **Sample overview**

172 A total of 105 saliva samples, 49 from children with long COVID and 56 from controls of
173 the same age range (with average ages of 13.3 and 11.6 years, respectively), were collected and
174 included in this study for analysis. Demographic and clinical information of patients with long
175 COVID was gathered as well, aiming to check any potential associations between these data and
176 the different salivary biomarker levels measured in this work. Thus, data about previous relevant
177 diseases obtained from the patient personal health records, as well as clinical condition measured
178 after the diagnosis of long COVID, were collected to monitor the development of the disease
179 (Table 1). Consistent with previous studies suggesting that pediatric long COVID may have an
180 important impact on health (Lopez-Leon, Wegman-Ostrosky et al. 2022), our analysis of clinical
181 data from children with the disease enrolled in this study revealed the great threat that long COVID
182 poses to their health and normal development. Indeed, as many as 28.6% of them presented a
183 severe form of the disease, including highly disabling symptoms such as extreme fatigue (44.9%),
184 CNS symptoms (79.6%), brain fog (59.2%), respiratory symptoms (59.2%), cardiovascular
185 symptoms (65.3%), and insomnia (46.9%) (Table 1).

186

187 **Salivary biomarker levels are altered in children with long COVID**

188 The levels of 13 biomarkers were measured in saliva of children with long COVID and
189 controls. These biomarkers were selected based on the potentially high relevance of the
190 information that they were presumably able to provide us about the redox status (TOS, AOPP, D-
191 ROMS, TEACH, CUPRAC, and FRAP), the immune response (ADA1, ADA2, tADA, ferritin,
192 and Ig-RBD), the acute stress levels (sAA), and the general homeostatic status (total proteins) of
193 children included in this study.

194 As a first and simple approach to check whether salivary biomarker levels were altered in
195 children with long COVID compared to controls, these levels were analyzed jointly. For this, we
196 performed Principal Component Analysis (PCA) to visualize the biomarker level patterns of all
197 samples in a low-dimension space based on the salivary level matrix of the 13 biomarkers across
198 the 105 samples. Thus, the top two principal components explained 27.1% and 23.7% of the
199 variance of the original data, respectively (Figure 1A). As shown in Figure 1A, the samples
200 apparently did not form two clearly different clusters as they appeared mostly intermixed, both
201 centroids were not far apart from each other, and the confidence ellipses chiefly overlapped.

202 However, a closer look to these PCA results revealed that while most samples located in the upper
203 left quadrant corresponded to children with long COVID and just a few of them to controls (18 vs.
204 6, respectively), exactly the opposite situation was observed in the lower right quadrant (6 vs. 24,
205 respectively) (Figure 1A). Therefore, although samples from long COVID patients and those from
206 controls did not form two clearly separate clusters, PCA results suggested that there could be
207 significant differences in salivary biomarker levels between both groups that deserved further
208 research.

209 Our moderately promising preliminary foray into the study of the salivary biomarker levels
210 of children with long COVID and controls by PCA (Figure 1A), led us to go further and analyze
211 in detail the differences between both groups of children for each of the 13 salivary biomarkers
212 included in this study individually. Interestingly, we found that while the levels of the oxidant
213 biomarkers TOS and D-ROMS were increased in children with long COVID compared to controls,
214 exactly the opposite result was observed for the antioxidant biomarkers TEACH, CUPRAC, and
215 FRAP, whose levels were significantly reduced in children with long COVID (Figure 1B).
216 Curiously, the only salivary biomarker of this group that did not follow the same pattern was
217 AOPP, as its level was increased in children with long COVID albeit it is a measurement of the
218 oxidative protein products (Figure 1B). Furthermore, it was surprising to observe that the levels of
219 only two of the five biomarkers measured to evaluate the immune response, ADA2 and tADA,
220 were significantly altered in saliva of children with long COVID compared to controls (Figure
221 1C). Finally, the sAA and total protein levels, that usually increased in disease (Nater and Rohleder
222 2009, Shaila, Pai et al. 2013, Masters, Noyce et al. 2015, Deneva, Ianakiev et al. 2022), were
223 significantly reduced in children with long COVID compared to controls (Figures 1D and 1E).

224

225 **Correlation patterns between the different salivary biomarkers are altered in children with** 226 **long COVID**

227 After finding clear differences when comparing the salivary biomarker levels of children
228 with long COVID and controls in many cases (Figures 1B-1E), and aiming to obtain more
229 information which could help us understand better the biological relevance of such differences, we
230 checked whether there were significant correlations between the levels of the different salivary
231 biomarkers included in this study. For this purpose, we used the Pearson correlation coefficient to

232 measure the lineal correlation for all the possible biomarker pairs, and the magnitudes (colors) and
233 statistical significances (asterisks) of all these correlation analyses were displayed in a diagram to
234 facilitate the joint interpretation of the results (Figure 2A). As expected, the highest correlations
235 were those found between salivary biomarkers that are functionally related, such as the high
236 positive correlations observed for the pairs FRAP-TEACH, CUPRAC-TEACH, FRAP-CUPRAC,
237 ADA1-tADA, and ADA2-tADA (Figure 2A). Curiously, while some biomarkers presented
238 significant correlations with many others, as in the cases of TEACH and the total amount of
239 proteins in saliva, whose levels significantly correlated with 7 of the other 12 biomarkers in both
240 cases, others significantly correlated with only a couple of the other biomarkers (TOS) or even
241 with none of them (IgRBD) (Figure 2A).

242 The existence of significant correlations between salivary biomarkers in several cases
243 (Figure 2A), together with the fact that one of our main goals is to be able to discriminate between
244 children with long COVID and controls reliably, led us to wonder if both groups of children could
245 present different correlation patterns. Thus, we decided to repeat the same analysis of correlations
246 but this time for controls and children with long COVID separately, and results were represented
247 in two diagrams to be able to visually compare them more easily (Figure 2B). These analyses
248 revealed that the total number of salivary biomarker pairs with a significant correlation was almost
249 equal in both groups of children (24 vs. 23, respectively) (Figure 2B). However, a closer look at
250 the results showed that several correlations observed in control children, particularly those between
251 the salivary biomarkers measured to evaluate the oxidative status (i.e. TEACH-D-ROMS,
252 CUPRAC-AOPP, or FRAP-AOPP), were no longer statistically significant in children with long
253 COVID (Figure 2B). In the opposite direction, the case of sAA drew special attention as it went
254 from not significantly correlating with any other salivary biomarker in controls to doing so with
255 AOPP, D-ROMS, TEACH, and CUPRAC in children with long COVID (Figure 2B).

256 In summary, these results demonstrate that not only the levels of most of the salivary
257 biomarkers included in this study are altered in children with long COVID compared to controls
258 (Figures 1B-1E), but also that the correlation patterns between such biomarkers are significantly
259 different when comparing both groups of children (Figure 2B). Therefore, both types of differences
260 could potentially be useful to discriminate between children with long COVID and those who do
261 not suffer from the disease.

262

263 **Salivary biomarker levels are useful to reliably discriminate between children with long-**
264 **COVID and controls, and also between children with mild and severe long COVID**
265 **symptoms**

266 Given that levels of 9 of the 13 salivary biomarkers measured in this study were altered in
267 children with long COVID (Figures 1B-1E), and that the correlation patterns between the different
268 biomarkers were also significantly distinct in these children in many cases (Figure 2B), we decided
269 to study in detail how useful these salivary biomarkers could really be in discriminating between
270 children with long COVID and controls. Hence, a multivariate logistic regression analysis was
271 performed to determine which of our 13 salivary biomarkers were the most explanatory variables
272 regarding the differences between both groups of children. Importantly, this analysis showed that
273 TOS, ADA2, total proteins, and AOPP, in combination, were the variables that best discriminated
274 between children with long COVID and controls. Indeed, consistent with the idea that these four
275 salivary biomarkers could be useful to discriminate between both groups of children and contrary
276 to the observed in the previous PCA that included all the biomarkers (Figure 1A), a new PCA
277 analysis performed with a matrix containing the levels of only these 4 salivary biomarkers across
278 our 105 samples resulted in two clearly different distribution patterns when comparing children
279 with long COVID and controls (Figure 3A). In this case, the top two principal components
280 explained 36% and 25.8% of the variance of the original data, respectively, and the confidence
281 ellipses were distinct (Figure 3A). To further confirm the utility of TOS, ADA2, total proteins, and
282 AOPP, combined, to discriminate between children with long COVID and controls, we elaborated
283 a predictive model with these four salivary biomarkers and tested it. Thus, 85% of all our samples
284 were used to elaborate and train the predictive model, while the remaining 15% of samples were
285 utilized to test it, finding that the model presented very high accuracy, 86.67% (95% CI: 0.5954,
286 0.9834), with a sensitivity of 0.875 and a specificity of 0.857. Furthermore, this predictive model
287 was also evaluated by performing a receiver operating characteristic (ROC) curve, which is a
288 graphical plot that illustrates the diagnostic ability of a binary classifier system as its discrimination
289 threshold is varied (Fawcett 2006), resulting in an outstanding area under the curve of 0.906 and,
290 therefore, confirming the strength and potential utility of our predictive model (Figure 3B).

291 The exceptional finding that 4 of the salivary biomarkers measured in this study could be
292 used to reliably discriminate between children with long COVID and controls, prompted us to
293 check, in a similar way, whether we were able to focus on the group of children with long COVID
294 and use the biomarkers to discriminate between children who present a severe form of the disease
295 and those others who only have mild symptoms. In this case, the multivariate logistic regression
296 analysis using the forward and backward stepwise regression method (Efroymson and MA 1960)
297 revealed that total proteins and ADA1, in combination, were the variables that best discriminated
298 between children with mild and severe long COVID symptoms. Accordingly, whereas a PCA
299 analysis performed with a matrix containing the levels of the 13 salivary biomarkers measured in
300 this study across the 49 samples from children with long COVID resulted in two mostly
301 overlapping confidence ellipses (Figure 3C), another PCA analysis performed with a matrix
302 containing only the levels of total proteins and ADA1 across the same 49 samples showed two
303 more different confidence ellipses as expected (Figure 3D). To further confirm the utility of total
304 proteins and ADA1, combined, to discriminate between children with mild and severe long
305 COVID symptoms, we elaborated a predictive model with these two salivary biomarkers and
306 tested it as previously explained. This time, the model presented an accuracy of 71.43% (95% CI:
307 0.29, 0.96), with a sensitivity of 0.50 and a specificity of 0.80. Finally, the ROC curve for this
308 predictive model showed an area under the curve of 0.796, suggesting that our model has good
309 discriminatory ability (Figure 3E).

310 All these data together strongly suggest that the combination of the salivary biomarkers
311 TOS, ADA2, total proteins, and AOPP could be useful to reliably discriminate between children
312 with long COVID and controls, while the combination of total proteins and ADA1 could provide
313 us with a tool to discriminate between children with mild and severe long COVID symptoms.
314 Crucially, both findings could have a huge potential usefulness at the diagnosis and prognosis
315 levels.

316

317 **Salivary biomarker levels correlate with different demographic and clinical parameters in** 318 **children with long COVID**

319 After finding that levels of the salivary biomarkers could be useful to discriminate between
320 children with long COVID and controls, and between children with mild and severe long COVID

321 symptoms, we aimed to investigate the potential correlations among the different salivary
322 biomarker levels and the demographic and clinical parameters available from children with long
323 COVID included in this study. Results of the ability of each biomarker to predict the different
324 demographic and clinical parameters were represented in a diagram to be able to visualize them
325 more easily (Figure 4). Interestingly, while several parameters such as the fatigue test results
326 correlated with the levels of multiple salivary biomarkers (8), others such as the gender only
327 correlated with the levels of one salivary biomarker (TOS) (Figure 4). From the point of view of
328 biomarkers, the case of total proteins drew attention, since its level correlated with 8 demographic
329 and clinical parameters, 5 of them in a statistically significant manner (Figure 4).

330

331 DISCUSSION

332 In this study, we have tried to shed light on the still lacunar knowledge on pediatric long
333 COVID by taking advantage of our invaluable saliva samples from children diagnosed with the
334 disease, together with an equally precious set of demographic and clinical data associated with
335 such samples. The great relevance of pediatric long COVID and, therefore, the need to study it,
336 comes not only from its high incidence as it appears in more than 25% of children infected by
337 SARS-CoV-2 (Lopez-Leon, Wegman-Ostrosky et al. 2022), but also from the fact that more than
338 28% of children with long COVID present serious symptoms as consequence of this disease,
339 according to our data (Table 1). Even though the most worrying consequence of long COVID in
340 children is the prevalence of symptoms affecting so important systems as the central nervous
341 (79.6%), the respiratory (59.2%), and the cardiovascular (65.3%) systems, among others, it is also
342 alarming that a high percentage of these children see their school attendance (28.6%), school
343 performance (44.9%), and participation in extracurricular activities (49.0%) altered (Table 1).
344 Therefore, all this together could cause serious and difficult to recover developmental alterations
345 in children.

346 The measurement of the levels of several salivary biomarkers to check whether children
347 with long COVID were suffering from oxidative stress, revealed significant changes but reflect an
348 apparent state of balance. Thus, while the levels of the antioxidant biomarkers TEACH, CUPRAC,
349 and FRAP decreased in saliva of children with long COVID compared to controls, the opposite
350 trend was observed for the oxidant biomarkers TOS and d-ROMs. The only exception was the

351 oxidant biomarker AOPP whose levels decreased in children with long COVID, probably because
352 the total protein levels also decreased in saliva of these children compared to controls. Salivary
353 tADA, ADA1, and ADA2 levels provided relevant information regarding the immune response
354 that was underway in children with long COVID. Given the prominent role of ADA in
355 mononuclear cell maturation from monocyte to macrophage and in the differentiation of B and T
356 lymphocytes (Sullivan, Osborne et al. 1977, MacDermott, Tritsch et al. 1980, Baganha, Pêgo et
357 al. 1990), the increased levels of tADA and ADA2 in saliva of children with long COVID
358 suggested that cell-mediated immunity could be more important than humoral immunity in the
359 response of children against long COVID. Intriguingly, ADA1 levels did not change in saliva of
360 children with long COVID. However, this is not so strange since it has recently been reported that
361 tADA and ADA2 levels change in serum of individuals 8 weeks after diagnosis of acute COVID-
362 19 by PCR, whereas ADA1 levels do not change (Jedrzejewska, Kawecka et al. 2023).
363 Furthermore, it is also not surprising that in this mentioned study the levels of tADA and ADA2
364 in serum decreased (Jedrzejewska, Kawecka et al. 2023) while in our work they increased in saliva,
365 as it has been previously shown that tADA and its isoforms can respond to inflammation
366 differently in serum or saliva (Contreras-Aguilar, Tvarijonaviciute et al. 2020). Although it has
367 previously been reported that ferritin levels are dramatically increased in saliva of patients with
368 acute COVID-19 (Franco-Martínez, Cerón et al. 2021), we did not find salivary ferritin levels to
369 be elevated in children with long COVID compared to controls. Therefore, the potentiality of
370 salivary ferritin levels to differentiate between the acute and the chronic phases of COVID-19 in
371 children deserve further research. Surprisingly, we found that sAA and total protein levels were
372 reduced in saliva of children with long COVID compared to controls, while both biomarkers use
373 to be increased in disease (Nater and Rohleder 2009, Shaila, Pai et al. 2013, Masters, Noyce et al.
374 2015, Deneva, Ianakiev et al. 2022). Nevertheless, our sAA results are consistent with previous
375 studies showing that sAA levels decrease in both, rats and children, with chronic stress (Wolf,
376 Nicholls et al. 2008, Matsuura, Takimura et al. 2012). The reduced levels of total proteins observed
377 in saliva of children with long COVID are more difficult to explain, and further research on this
378 would require delving deeper into the eating habits of these children, since it could simply be due
379 to a reduction in their intake.

380 Given that one of the main objectives of this work was the development of some simple,
381 fast and cheap methods capable of discriminating between children with long COVID and controls,

382 using samples that can also be obtained quickly, cheaply and minimally invasive, we did not limit
383 our study to the measurement of salivary biomarkers individually, which could also present a high
384 intrinsic variability between different subjects. Therefore, in addition to study changes in the levels
385 of the different biomarkers separately, we also analyzed the correlations between all biomarker
386 pairs to identify any correlation patterns that could exist and be considered as a characteristic
387 signature of children with long COVID. If this signature exists, it could allow us to differentiate
388 these children from controls through a simple correlation analysis, and probably without the need
389 to measure more than a few biomarkers. The analysis of correlations including all samples, both
390 from children with long covid and controls, helped us to verify that, as expected, the highest
391 correlations were those between functionally related biomarkers (CUPRAC-TEACH, FRAP-
392 TEACH, FRAP-CUPRAC, ADA1-tADA, ADA2-tADA, among others). Although expected, this
393 result was still important because it served as a control to show us that our correlation analyses
394 were reliable. Interestingly, the comparison between the salivary biomarker correlation patterns of
395 children with long COVID and controls revealed important differences, highlighting the fact that
396 sAA levels went from not correlating with any other biomarkers in control children to significantly
397 correlating with the levels of other 5 biomarkers (AOPP, DROMS, TEACH, CUPRAC, and total
398 proteins) in children with long COVID. Interestingly, when we incorporated to our correlation
399 analyses a group of demographic/clinical variables from the children with long COVID included
400 in this study, we found significant correlations between the levels of the salivary biomarker and
401 these variables in 19 cases. Particularly remarkable were the cases of ferritin, TEACH, and total
402 proteins because they were the biomarkers whose levels correlated with more of the
403 demographic/clinical variables (with 3, 4, and 5, respectively). Importantly, we found a significant
404 correlation between the salivary ferritin levels and the fatigue test, supporting our previously
405 mentioned idea that iron levels might be altered in children with long COVID. Moreover, these
406 analyses also revealed significant correlations between the sAA levels and two of the
407 demographic/clinical variables: the school performance and the fatigue test. This is consistent with
408 several previous studies reporting a clear association between reduced sAA levels and performance
409 deficits during sleep loss (note that almost 47% of children with long COVID suffer from
410 insomnia) (Pajcin, Banks et al. 2017), and between sAA levels and mental disorders in children
411 (Jezova, Trebaticka et al. 2020).

412 The facts that (1) levels of most of the salivary biomarkers measured in this study (9 out of
413 13) were altered in children with long COVID, and (2) children with long COVID presented a
414 characteristic pattern of correlations between the distinct biomarkers significantly different from
415 that of control children, clearly suggested that these biomarkers could be useful for discriminating
416 between both groups of children. These promising results prompted us to further refine our
417 analyses by using a multivariate logistic regression analysis, finding that, among all the possible
418 combinations of the 13 biomarkers included in this work, TOS, ADA2, total proteins, and AOPP,
419 in combination, were the variables that best discriminated between children with long COVID and
420 controls. But the great relevance of this discovery was not in which those 4 variables were, but in
421 the outstanding soundness of the predictive model that included them, whose accuracy was 86.67%
422 and with an area under the ROC curve of 0.906. Consistent with these results, our PCA analyses
423 confirmed that the group composed only of the 4 salivary biomarkers TOS, ADA2, total proteins,
424 and AOPP was able to discriminate between children with long COVID and controls better than
425 using the 13 biomarkers included in this study together. This could have important implications
426 from a practical point of view, since it meant that it would be enough to measure the levels of only
427 those 4 biomarkers to be able to discriminate between both groups of children reliably. It would
428 be extremely useful if the levels of the salivary biomarkers also allowed us to discriminate between
429 children with long COVID who will present a mild form of the disease and those who will suffer
430 severe symptoms. The multivariate logistic regression analysis performed to check this possibility
431 showed that the group composed only of the 2 biomarkers total proteins and ADA1 was the one
432 which best discriminated between children with mild and severe long COVID symptoms.
433 Although these results were not as extraordinarily good as in the previous case from a statistical
434 point of view, the predictive model including only total proteins and ADA1 had a still notable
435 accuracy of 71.43% and an area under the ROC curve of 0.796, suggesting that they could be
436 useful to discriminate between both groups of children. As in the previous case, the comparison of
437 the PCA analyses including the 13 salivary biomarkers measured in this work or only total proteins
438 and ADA1, confirmed that using only these two biomarkers we could better discriminate between
439 children with mild and severe long COVID symptoms.

440 Despite the efforts of the WHO to establish a consensus that serves to clinically define long
441 COVID (Soriano, Murthy et al. 2022), there is still no general agreement, leading to a great
442 disparity in the criteria used to identify symptoms and diagnose the disease. As a result of these

443 differences, not only the nomenclature, definition, epidemiology, and pathogenesis of long COVID
444 are still unclear, but also its prevalence that varies from less than a 15% to over a 66% depending
445 on the diagnostic criteria used (Blomberg, Mohn et al. 2021, Taquet, Dercon et al. 2021). This
446 conundrum hinders the research into the disease pathogenesis, its approach from a clinical point
447 of view, and the work of raising awareness among the population and institutions about its high
448 relevance and the need to study it. Importantly, this study demonstrates that the levels of only a
449 few biomarkers (TOS, ADA2, total proteins, and AOPP) that can be measured in saliva in a simple,
450 fast, cheap and minimally invasive way, can be used to differentiate between children suffering
451 from long COVID and healthy controls, or in other words, as a tool to help diagnose the disease
452 in children following objective and standardized criteria that could be easily adopted in any
453 hospital. In the same way, the levels of only a couple of salivary biomarkers (total proteins and
454 ADA1) could help us to reliably and objectively classify which children with long COVID suffer
455 from a severe form of the disease and which do not. Although this diagnostic use of the salivary
456 biomarkers undoubtedly is very important and helpful to shed light on the field of pediatric long
457 COVID, the ideal situation would be to be able to use them also as prognosis biomarkers to foresee
458 which of the children infected by SARS-CoV-2 will be more likely to develop long COVID and,
459 in addition, which of them will be more likely to develop serious symptoms of the disease. Thus,
460 by diagnosing children at early stages of long COVID and predicting how their disease will
461 progress, they could benefit from early monitoring and initiation of treatments and therapies
462 relieving the severity of symptoms, thus, limiting possible alterations in their development. The
463 results we report here are promising if we think about the possibility of using salivary biomarkers
464 for prognosis of pediatric long COVID, albeit further research is needed to explore this possibility
465 by measuring the levels of the distinct biomarkers in saliva of children at different times, ideally
466 from the time of SARS-CoV-2 infection. Hence, the moment when levels of the different salivary
467 biomarkers begin to change significantly, and the study of their kinetics is what would indicate
468 which of the biomarkers could have a prognostic use.

469 This work has several strengths, many of them uncommon in this area of study: (1) it
470 addresses a relevant but still understudied biomedical question such as pediatric long COVID; (2)
471 collection of data was standardized in advance; (3) saliva levels of a wide variety of biomarkers
472 were measured, providing us with information about different host responses; (4) sample sizes are
473 very high; and (5) we have a highly valuable set of demographic/clinical data from children with

474 long COVID. However, our study also presents several limitations that should be addressed in the
475 future research: (1) we did not have the necessary saliva samples to measure the biomarker levels
476 at different time points after infection of children with SARS-CoV-2, which would be useful to
477 determine whether such biomarkers are useful for prognostic purposes and (2) we did not have a
478 third group of children with another disease to compare and confirm that our findings are specific
479 for long COVID. However, regarding this last issue, all our analyses were performed using the
480 specific levels of different combinations of several biomarkers, making improbable that the same
481 changes in the same groups of biomarkers appear in saliva of children in response to other diseases.

482 In summary, our study demonstrates that salivary biomarkers can be important tools to help
483 diagnose pediatric long COVID and classify its severity in an objective and standardized manner
484 and paves the way for future studies that explore the possibility that such biomarkers can also be
485 used for prognostic purposes.

486

487 **METHODS**

488 **Saliva samples and patient information collection**

489 Saliva samples were collected from 49 children between 9 and 18 years of age, who had
490 been diagnosed with long COVID by pediatricians at the Unidad de Covid Persistente Pediátrico
491 of the Hospital Universitario Germans Trias i Pujol (Badalona, Spain). As a control, saliva samples
492 were also collected from 56 healthy children within the same age range. In all cases, saliva samples
493 were obtained under supervision using a salivette® device (Sarstedt, Germany). Participants were
494 instructed to chew the cotton swab of the salivette® device for 1 minute and then the swab was
495 transferred into the salivette® tube and centrifuged at 4500 rpm for 10 min. Participants were
496 requested to refrain from eating, drinking, and performing basic oral hygiene for 1 h before sample
497 collection. No samples showed blood contamination as determined by visual inspection.
498 Inactivation of potential infectious viruses was performed by incubation with Np-40 to a final
499 concentration of 0.5% for 30 minutes and were stored at -80°C until further analysis. Regarding
500 the inclusion criteria, participants were included in this study if they: (1) presented three or more
501 compatible symptoms lasting longer than twelve weeks after SARS-CoV-2 infection, regardless
502 of previous hospital admission, (2) had a positive diagnosis of SARS-CoV-2 infection or clinical

503 suspicion (i.e., COVID-19 symptoms in participants with a close relative who had confirmation of
504 SARS-CoV-2 infection in a situation of community transmission at the beginning of the pandemic,
505 March 2020, when it was not possible to access to test), and (3) had persisting symptoms that were
506 not present before COVID-19 infection. Participants were excluded if they were unable to sign the
507 informed consent, attend the follow-up visits, or presented an alternative diagnosis. Patients who
508 could continue with their usual activities although they presented fatigue were considered to have
509 mild severity, those who were able to continue attending school but had to stop playing sports and
510 extracurricular activities were considered to have moderate severity, and those who could not
511 attend school normally were considered to have severe long COVID.

512 Besides the saliva samples, we collected abundant demographic and clinical information
513 on the children with long COVID from two different sources, i.e., their clinical examinations and
514 their patient clinical histories, aiming to facilitate the identification of any potential correlations
515 that could exist between the biological parameters measured in the saliva samples and these
516 demographic/clinical variables (Table 1).

517

518 **Measurement of salivary biomarker levels**

519 Total oxidant status (TOS) was measured following the method of Erel and colleagues
520 (Erel 2005) adapted to saliva samples. The assay is based on the oxidation of ferrous to ferric ion
521 in the presence of various oxidant species in acidic medium. Reactive oxygen metabolites derived
522 compounds (d-ROMs) were measured by the method described in Cesarone and colleagues
523 (Cesarone, Belcaro et al. 1999), which is based on the capacity of transition metals to catalyse in
524 the presence of peroxides with formation of free radicals. The trolox equivalent antioxidant
525 capacity (TEACH) was quantified by a method based on the capacity of the the antioxidants
526 present in the sample to reduce the ABTS, as previously reported (Barranco, Rubio et al. 2019).
527 Cupric reducing antioxidant capacity (CUPRAC) was measured as previously described
528 (Tvarijonaviciute, Aznar-Cayuela et al. 2017), and is based on the reduction of cupric to cuprous
529 ion by the antioxidants present in the sample. Ferric reducing ability of plasma (FRAP) was
530 measured in saliva following the method described by Benzie and Strain (Benzie and Strain 1996),
531 which measures the capacity of the sample to reduce ferric to ferrous ion as previously described
532 and validated (Tvarijonaviciute, Aznar-Cayuela et al. 2017). Salivary protein oxidation status was

533 evaluated by measuring advanced oxidation protein product (AOPP) concentrations, as previously
534 described by Witko-Sarsat and colleagues (Witko-Sarsat, Friedlander et al. 1996). Salivary levels
535 of adenosine deaminase (tADA) and its isoenzymes, ADA1 and ADA2, were measured as
536 previously described and validated (Franco-Martínez, Tecles et al. 2021). In brief, tADA was
537 measured using a commercially available spectrophotometric assay (Adenosine Deaminase assay
538 kit, Diazyme Laboratories, Poway, California, USA) without any treatment. Then, erythro-9-(2-
539 hydroxy-3-nonyl) adenine (EHNA) was added to Reagent 1 and values of ADA2 and ADA1 were
540 determined. Ferritin was measured by a commercial immunoturbidimetric assay that uses
541 polyclonal anti-human ferritin antibodies (Tina-quant ferritin, Roche Diagnostics, Indianapolis,
542 United States) in an automated analyzer (Olympus AU400 automated biochemical analyzer,
543 Olympus Diagnostica GmbH, Ennis, Ireland). The assay was adapted from serum to saliva as
544 previously reported (Franco-Martínez, Tvarijonaviciute et al. 2019). Salivary alpha-amylase
545 (sAA) activity was measured using a colorimetric commercial kit (Alpha-Amylase, Beckman
546 Coulter Inc., Fullerton, CA, USA) following the International Medicine (IFCC) method (1999,
547 Rohleder and Nater 2009), as previously reported and validated (Tecles, Fuentes-Rubio et al.
548 2014). Total protein levels in saliva were measured using a colorimetric assay (protein in urine
549 and CSF, Spinreact, Spain) following the manufacturer's instructions. Salivary anti SARS-CoV-2
550 RBD IgG (IgG-RBD) levels were measured by a method developed and validated in the authors
551 laboratory (Martínez-Subiela, Franco-Martínez et al. 2022). All measurements were performed in
552 an automated analyser (Olympus AU400 automated biochemical analyzer, Olympus Diagnostica
553 GmbH, Ennis, Ireland) except anti SARS-CoV-2 RBD IgG that were measured in EnSpireAlpha
554 plate Reader (PerkinElmer (MA, USA).

555

556 **Bioinformatics and statistical analysis**

557 All the bioinformatic analyses included in this study were performed with R (v.4.3.1)
558 (<https://www.R-project.org/>). Principal component analyses (PCA) were conducted using the R
559 package for multivariate analysis FactoMineR (S Lê , J Josse et al. 2008) to check, based on the
560 levels of the different salivary biomarkers tested in each case, whether there was a significant
561 separation between children with long COVID and control children, or between children with long
562 COVID displaying a severe form of the disease and those others with mild symptoms. Levels of

563 each salivary biomarker in children with long COVID and controls were represented in violin plots
564 using GraphPad Prism (version 8.0.2 for Windows, GraphPad Software, Boston, Massachusetts
565 USA, www.graphpad.com), and the same software was used to analyze the differences between
566 both groups by Student's t-test. The R package corrplot (<https://github.com/taiyun/corrplot>) was
567 used to study the correlations between the levels of the different salivary biomarkers in (1) all the
568 individuals, (2) healthy controls, and (3) individuals with long COVID, by calculating the Pearson
569 correlation coefficient for all the possible biomarker pairs. Moreover, the same methodology was
570 used to study the correlations between the levels of the salivary biomarkers and the
571 demographic/clinical variables in children with long COVID. A multivariate logistic regression
572 analysis using the forward and backward stepwise regression method (Efroymson and MA 1960)
573 was performed to identify which variables best discriminated between children with long COVID
574 and controls in one case, or between children with long COVID displaying a severe form of the
575 disease and those others with mild symptoms in another case. This bi-directional stepwise
576 procedure is a combination of forward and backward selection and elimination that tests the
577 variables evaluated and all their possible combinations, using at every step the *t* statistics for the
578 coefficients of the variables being considered (Efroymson and MA 1960). Once the variables that
579 best discriminated between groups of children were identified (TOS, ADA2, total proteins, and
580 AOPP to discriminate between children with long COVID and controls, and total proteins and
581 ADA1 to discriminate between children with long COVID displaying a severe form of the disease
582 and those others with mild symptoms), only those selected biomarkers were used to perform
583 regression predictive models by using data from 85% of individuals to train the models, and from
584 the remaining 15% of subjects to test them. These predictive models were also evaluated by
585 performing ROC curves using the R package pROC (Robin, Turck et al. 2011). The R package
586 ggplot2 version 3.4.3 was used to generate all the diagrams showing the results of the correlation
587 analyses (H 2016).

588

589 **Acknowledgements**

590 This work was supported by the grant 00006/COVI/20 to VM and MLC funded by Fundación
591 Séneca-Murcia, the Saavedra Fajardo contract 21118/SF/19 to SC funded by Fundación Séneca-
592 Murcia, the Juan de la Cierva-Incorporación contract to SDT funded by Ministerio de Ciencia y

593 Tecnología/AEI/FEDER. The funders had no role in the study design, data collection and analysis,
594 decision to publish, or preparation of the manuscript.

595

596 **Authors' contributions**

597 The authors offer the following declarations about their contributions: Conceived and designed the
598 experiments: SC, MLC and VM. Performed the experiments: SC, SDT, FPS and SMS. Analyzed
599 the data: SC, SDT, FPS, SMS, MMH, JJC, MLC, VM. Provided patients' samples and clinical
600 data: MMH, AGA, CCA, EDM. Writing-original draft: SC. Writing-review & editing: MLC, VM,
601 MMH, AGA, SMS, JJC. All authors have read and agreed to the published version of the
602 manuscript.

603

604 **Funding**

605 This work was supported by the grant 00006/COVI/20 to VM and MLC funded by Fundación
606 Séneca-Murcia, the Saavedra Fajardo contract 21118/SF/19 to SC funded by Fundación Séneca-
607 Murcia, the Juan de la Cierva-Incorporación contract to SDT funded by Ministerio de Ciencia y
608 Tecnología/AEI/FEDER. The funders had no role in the study design, data collection and analysis,
609 decision to publish, or preparation of the manuscript.

610

611 **Ethics approval and consent to participate**

612 All procedures in this work were carried out following the principles expressed in the Declaration
613 of Helsinki, as well as in all the other applicable international, national, and/or institutional
614 guidelines for the use of samples and data and have been approved by the Comité de Ética de la
615 Investigación (CEIm) at Hospital Clínico Universitario Virgen de la Arrixaca (protocol number
616 2020-10-12-HCUVA – Effects of aging in the susceptibility to SARS-CoV-2). In all cases, the
617 parents or legal guardians of the children signed informed consents accepting that the saliva
618 samples were used for research.

619

620 **Competing interests**

621 The authors declare no competing interests.

622

623

624 **Figure legends**

625 **Figure 1. Sample overview using PCA and salivary biomarker levels.** **A** Using the levels of
626 the 13 salivary biomarkers included in this study measured in the 105 saliva samples as input, the
627 data were linearly transformed and visualized in two-dimensional space. Each sample is
628 represented by one dot, and colored and shaped according to the group to which it belongs. The
629 percentage of the variance of the original data explained by each of the two principal components
630 is indicated in the axis labels. The 90% confidence data ellipses are shown for each group. **B-E**
631 Violin plots showing the levels of the 13 biomarkers included in this study in saliva of children
632 with long COVID and controls. Salivary biomarkers have been grouped according to the
633 information they provide as indicated. Each sample is represented by one dot. *P* values were
634 calculated using Student's t-test. ns, not significant; * $P \leq 0.05$, ** $P \leq 0.01$, and *** $P \leq 0.001$.

635

636 **Figure 2. Correlations between the salivary biomarkers measured in this work.** Diagrams
637 showing the correlations between all the possible salivary biomarker pairs according to the Pearson
638 correlation coefficients, using the salivary biomarker levels of all the children included in this
639 study (**A**), only of control children (**B**), or only of children with long COVID (**C**). Each cell of the
640 grid refers to the correlation between the two biomarkers faced. The circle sizes are proportional
641 to the strength of the correlations, while the circle colors show the values of the Pearson correlation
642 coefficients according to the legend. Asterisks denote statistically significant correlations.

643

644 **Figure 3. Checking the utility of the salivary biomarkers to discriminate between children**
645 **with long COVID and controls, as well as between children with long COVID who present a**
646 **severe form of the disease and those others with mild symptoms.** **A, C, D** PCAs using as input
647 the levels of the biomarkers TOS, ADA2, total proteins, and AOPP measured in the 105 saliva
648 samples included in this study (**A**), the levels of the 13 biomarkers included in this study measured
649 in the 49 saliva samples from children with long COVID (**C**), and the levels of the biomarkers
650 total proteins and ADA1 measured in the 49 saliva samples from children with long COVID (**D**).
651 In all three cases, the data were linearly transformed and visualized in two-dimensional space.
652 Each sample is represented by one dot, and colored and shaped according to the group to which it

653 belongs. The percentage of the variance of the original data explained by each of the two principal
654 components is indicated in the axis labels. The 90% confidence data ellipses are shown for each
655 group. **B, E** ROC curves to assess the predictive value of the levels of the salivary biomarkers
656 TOS, ADA2, total proteins, and AOPP to discriminate between children with long COVID and
657 controls (**B**), and of the salivary biomarkers total proteins and ADA1 to discriminate between
658 children with long COVID who present a severe form of the disease and those others with mild
659 symptoms (**E**).

660

661 **Figure 4. Correlations between the salivary biomarkers and the demographic/clinical**
662 **variables in children with long COVID.** Diagram showing the correlations between the salivary
663 biomarkers and the demographic/clinical variables in children with long COVID, according to the
664 Pearson correlation coefficients. Each intersection of the grid refers to the correlation between the
665 two variables faced. The circle sizes show the strength of the correlations according to their *P*
666 values, while the circle colors refer to the statistical significance of the correlations considering a
667 *P* value ≤ 0.05 as the threshold.

668

669

670

671

672

673

674

675

676

677

678

679 **References**

- 680 (1999). "IFCC methods for measurement of catalytic concentration of enzymes. Part 9. IFCC method for
681 alpha-amylase [1,4-alpha-D-glucan 4-glucanohydrolase, EC 3.2.1.1]. International Federation of Clinical
682 Chemistry." *Clin Chim Acta* **281**(1-2): S5-39.
- 683 Al-Aly, Z., Y. Xie and B. Bowe (2021). "High-dimensional characterization of post-acute sequelae of COVID-
684 19." *Nature* **594**(7862): 259-264.
- 685 Baganha, M. F., A. Pêgo, M. A. Lima, E. V. Gaspar and A. R. Cordeiro (1990). "Serum and pleural adenosine
686 deaminase. Correlation with lymphocytic populations." *Chest* **97**(3): 605-610.
- 687 Baig, A. M. (2021). "Chronic COVID syndrome: Need for an appropriate medical terminology for long-
688 COVID and COVID long-haulers." *J Med Virol* **93**(5): 2555-2556.
- 689 Barranco, T., C. P. Rubio, A. Tvarijonaviciute, M. Rubio, E. Damia, E. Lamy, R. Cugat, J. J. Cerón, F. Tecles
690 and D. Escribano (2019). "Changes of salivary biomarkers under different storage conditions: effects of
691 temperature and length of storage." *Biochem Med (Zagreb)* **29**(1): 010706.
- 692 Behan, P. O. and W. M. Behan (1988). "Postviral fatigue syndrome." *Crit Rev Neurobiol* **4**(2): 157-178.
- 693 Benzie, I. F. and J. J. Strain (1996). "The ferric reducing ability of plasma (FRAP) as a measure of
694 "antioxidant power": the FRAP assay." *Anal Biochem* **239**(1): 70-76.
- 695 Blomberg, B., K. G. Mohn, K. A. Brokstad, F. Zhou, D. W. Linchusen, B. A. Hansen, S. Lartey, T. B. Onyango,
696 K. Kuwelker, M. Sævik, H. Bartsch, C. Tøndel, B. R. Kittang, R. J. Cox, N. Langeland and B. C.-R. Group (2021).
697 "Long COVID in a prospective cohort of home-isolated patients." *Nat Med* **27**(9): 1607-1613.
- 698 Calis, M., F. Ates, C. Yazici, K. Kose, M. Kirnap, M. Demir, M. Borlu and C. Evereklioglu (2005). "Adenosine
699 deaminase enzyme levels, their relation with disease activity, and the effect of colchicine on adenosine
700 deaminase levels in patients with Behçet's disease." *Rheumatol Int* **25**(6): 452-456.
- 701 Cesarone, M. R., G. Belcaro, M. Carratelli, U. Cornelli, M. T. De Sanctis, L. Incandela, A. Barsotti, R.
702 Terranova and A. Nicolaidis (1999). "A simple test to monitor oxidative stress." *Int Angiol* **18**(2): 127-130.
- 703 Chua, P. E. Y., S. U. Shah, H. Gui, J. Koh, J. Somani and J. Pang (2021). "Epidemiological and clinical
704 characteristics of non-severe and severe pediatric and adult COVID-19 patients across different
705 geographical regions in the early phase of pandemic: a systematic review and meta-analysis of
706 observational studies." *J Investig Med* **69**(7): 1287-1296.
- 707 Contreras-Aguilar, M. D., A. Tvarijonaviciute, I. Monkeviciene, M. Martín-Cuervo, L. G. González-Arostegui,
708 L. Franco-Martínez, J. J. Cerón, F. Tecles and D. Escribano (2020). "Characterization of total adenosine
709 deaminase activity (ADA) and its isoenzymes in saliva and serum in health and inflammatory conditions in
710 four different species: an analytical and clinical validation pilot study." *BMC Vet Res* **16**(1): 384.
- 711 Cucinotta, D. and M. Vanelli (2020). "WHO Declares COVID-19 a Pandemic." *Acta Biomed* **91**(1): 157-160.
- 712 Dao, T. L., V. T. Hoang, N. N. Nguyen, J. Delerce, H. Chaudet, A. Levasseur, J. C. Lagier, D. Raoult, P. Colson
713 and P. Gautret (2021). "Clinical outcomes in COVID-19 patients infected with different SARS-CoV-2
714 variants in Marseille, France." *Clin Microbiol Infect* **27**(10): 1516.e1511-1516.e1516.
- 715 Davis, H. E., G. S. Assaf, L. McCorkell, H. Wei, R. J. Low, Y. Re'em, S. Redfield, J. P. Austin and A. Akrami
716 (2021). "Characterizing long COVID in an international cohort: 7 months of symptoms and their impact."
717 *EClinicalMedicine* **38**: 101019.
- 718 Deneva, T., Y. Ianakiev and O. Boykinova (2022). "Salivary mental stress biomarkers in COVID-19 patients."
719 *Front Med (Lausanne)* **9**: 999215.
- 720 Ebrahimi-Rad, M., S. Khatami, S. Ansari, S. Jalylfar, S. Valadbeigi and R. Saghiri (2018). "Adenosine
721 Deaminase 1 as a Biomarker for Diagnosis and Monitoring of Patients with Acute Lymphoblastic
722 Leukemia." *J Med Biochem* **37**(2): 128-133.
- 723 Efrogmson and MA (1960). Multiple
724 regression analysis. . *Mathematical methods for digital computers*. Ralston and W. H. A. New York, Wiley.

- 725 Erel, O. (2005). "A new automated colorimetric method for measuring total oxidant status." *Clin Biochem*
726 **38**(12): 1103-1111.
- 727 Fainardi, V., A. Meoli, G. Chiopris, M. Motta, K. Skenderaj, R. Grandinetti, A. Bergomi, F. Antodaro, S. Zona
728 and S. Esposito (2022). "Long COVID in Children and Adolescents." *Life (Basel)* **12**(2).
- 729 Fawcett, T. (2006). "An introduction to ROC analysis." *Pattern Recognition Letters* **27**(8).
- 730 Franco-Martínez, L., J. J. Cerón, M. R. Vicente-Romero, E. Bernal, A. Torres Cantero, F. Tecles, C. Sánchez
731 Resalt, M. Martínez, A. Tvarijonaviciute and S. Martínez-Subiela (2021). "Salivary Ferritin Changes in
732 Patients with COVID-19." *Int J Environ Res Public Health* **19**(1).
- 733 Franco-Martínez, L., F. Tecles, A. Torres-Cantero, E. Bernal, I. San Lázaro, M. J. Alcaraz, M. R. Vicente-
734 Romero, E. Lamy, C. Sánchez-Resalt, C. P. Rubio, A. Tvarijonaviciute, S. Martínez-Subiela and J. J. Cerón
735 (2021). "Analytical validation of an automated assay for the measurement of adenosine deaminase (ADA)
736 and its isoenzymes in saliva and a pilot evaluation of their changes in patients with SARS-CoV-2 infection."
737 *Clin Chem Lab Med* **59**(9): 1592-1599.
- 738 Franco-Martínez, L., A. Tvarijonaviciute, S. Martínez-Subiela, G. Márquez, N. Martínez Díaz, R. Cugat, J. J.
739 Cerón and P. Jiménez-Reyes (2019). "Changes in lactate, ferritin, and uric acid in saliva after repeated
740 explosive effort sequences." *J Sports Med Phys Fitness* **59**(6): 902-909.
- 741 Gandhi, R. T., J. B. Lynch and C. Del Rio (2020). "Mild or Moderate Covid-19." *N Engl J Med* **383**(18): 1757-
742 1766.
- 743 Gonzalez-Aumatell, A., M. V. Bovo, C. Carreras-Abad, S. Cuso-Perez, E. Domenech Marsal, R. Coll-
744 Fernandez, A. Goicoechea Calvo, M. Giralt-Lopez, A. Ensenat Cantallops, S. Moron-Lopez, J. Martinez-
745 Picado, P. Sol Ventura, C. Rodrigo and M. Mendez Hernandez (2022). "Social, Academic, and Health Status
746 Impact of Long COVID on Children and Young People: An Observational, Descriptive, and Longitudinal
747 Cohort Study." *Children (Basel)* **9**(11).
- 748 Grant, M. C., L. Geoghegan, M. Arbyn, Z. Mohammed, L. McGuinness, E. L. Clarke and R. G. Wade (2020).
749 "The prevalence of symptoms in 24,410 adults infected by the novel coronavirus (SARS-CoV-2; COVID-19):
750 A systematic review and meta-analysis of 148 studies from 9 countries." *PLoS One* **15**(6): e0234765.
- 751 Greenhalgh, T., M. Knight, C. A'Court, M. Buxton and L. Husain (2020). "Management of post-acute covid-
752 19 in primary care." *BMJ* **370**: m3026.
- 753 H, W. (2016). *ggplot2: Elegant Graphics for Data Analysis*. New York, NY, USA, Springer.
- 754 Inui, S., A. Fujikawa, W. Gonoi, S. Kawano, K. Sakurai, Y. Uchida, M. Ishida and O. Abe (2022). "Comparison
755 of CT findings of coronavirus disease 2019 (COVID-19) pneumonia caused by different major variants." *Jpn*
756 *J Radiol* **40**(12): 1246-1256.
- 757 Jedrzejewska, A., A. Kawecka, A. Braczkowski, M. Romanowska-Kocejko, K. Stawarska, M. Deptuła, M.
758 Zawrzykraj, M. Franczak, O. Krol, G. Harasim, I. Walczak, M. Pikuła, M. Hellmann and B. Kutryb-Zajac
759 (2023). "Changes in Adenosine Deaminase Activity and Endothelial Dysfunction after Mild Coronavirus
760 Disease-2019." *Int J Mol Sci* **24**(17).
- 761 Jezova, D., J. Trebaticka, K. Buzgoova, Z. Durackova and N. Hlavacova (2020). "Lower activity of salivary
762 alpha-amylase in youths with depression." *Stress* **23**(6): 688-693.
- 763 Lee, Y. H. and D. T. Wong (2009). "Saliva: an emerging biofluid for early detection of diseases." *Am J Dent*
764 **22**(4): 241-248.
- 765 Leviner, S. (2021). "Recognizing the Clinical Sequelae of COVID-19 in Adults: COVID-19 Long-Haulers." *J*
766 *Nurse Pract* **17**(8): 946-949.
- 767 Lopez-Leon, S., T. Wegman-Ostrosky, N. C. Ayuzo Del Valle, C. Perelman, R. Sepulveda, P. A. Rebolledo, A.
768 Cuapio and S. Villapol (2022). "Long-COVID in children and adolescents: a systematic review and meta-
769 analyses." *Sci Rep* **12**(1): 9950.
- 770 Lopez-Leon, S., T. Wegman-Ostrosky, C. Perelman, R. Sepulveda, P. A. Rebolledo, A. Cuapio and S. Villapol
771 (2021). "More than 50 long-term effects of COVID-19: a systematic review and meta-analysis." *Sci Rep*
772 **11**(1): 16144.

773 MacDermott, R. P., G. L. Tritsch and J. F. Formeister (1980). "Adenosine deaminase and nucleoside
774 phosphorylase activities in normal human blood mononuclear cell subpopulations." Clin Exp Immunol
775 **42**(2): 303-307.

776 Martínez-Subiela, S., L. Franco-Martínez, C. P. Rubio, A. Muñoz-Prieto, A. Torres-Cantero, F. Tecles, C.
777 Sánchez-Resalt, J. J. Cerón and A. Tvarijonaviciute (2022). "Measurement of anti SARS-CoV-2 RBD IgG in
778 saliva: validation of a highly sensitive assay and effects of the sampling collection method and correction
779 by protein." Clin Chem Lab Med **60**(10): 1683-1689.

780 Masters, J. M., A. J. Noyce, T. T. Warner, G. Giovannoni and G. B. Proctor (2015). "Elevated salivary protein
781 in Parkinson's disease and salivary DJ-1 as a potential marker of disease severity." Parkinsonism Relat
782 Disord **21**(10): 1251-1255.

783 Matsuura, T., R. Takimura, M. Yamaguchi and M. Ichinose (2012). "Estimation of restraint stress in rats
784 using salivary amylase activity." J Physiol Sci **62**(5): 421-427.

785 Mishra, O. P., B. L. Gupta, Z. Ali, G. Nath and L. Chandra (1994). "Adenosine deaminase activity in typhoid
786 fever." Indian Pediatr **31**(11): 1379-1384.

787 Nater, U. M. and N. Rohleder (2009). "Salivary alpha-amylase as a non-invasive biomarker for the
788 sympathetic nervous system: current state of research." Psychoneuroendocrinology **34**(4): 486-496.

789 Pajcin, M., S. Banks, J. M. White, J. Dorrian, G. M. Paech, C. Grant, K. Johnson, K. Tooley, J. Fidock, G. H.
790 Kamimori and C. B. Della Vedova (2017). "Decreased salivary alpha-amylase levels are associated with
791 performance deficits during sleep loss." Psychoneuroendocrinology **78**: 131-141.

792 Robin, X., N. Turck, A. Hainard, N. Tiberti, F. Lisacek, J. C. Sanchez and M. Müller (2011). "pROC: an open-
793 source package for R and S+ to analyze and compare ROC curves." BMC Bioinformatics **12**: 77.

794 Rohleder, N. and U. M. Nater (2009). "Determinants of salivary alpha-amylase in humans and
795 methodological considerations." Psychoneuroendocrinology **34**(4): 469-485.

796 Rubio, C. P. and J. J. Cerón (2021). "Spectrophotometric assays for evaluation of Reactive Oxygen Species
797 (ROS) in serum: general concepts and applications in dogs and humans." BMC Vet Res **17**(1): 226.

798 S Lê , J Josse and F. Husson (2008). "FactoMineR: an R package for multivariate analysis." Journal of
799 statistical software **25**(1): 1–18.

800 Santosh, U. P., G. S. Renukananda and S. Abhilash (2016). "Role of Adenosine Deaminase in Common
801 Chronic ENT Infections." J Clin Diagn Res **10**(3): MC01-02.

802 Sari, R. A., S. Taysi, O. Yilmaz and N. Bakan (2003). "Correlation of serum levels of adenosine deaminase
803 activity and its isoenzymes with disease activity in rheumatoid arthritis." Clin Exp Rheumatol **21**(1): 87-90.

804 Shaila, M., G. P. Pai and P. Shetty (2013). "Salivary protein concentration, flow rate, buffer capacity and
805 pH estimation: A comparative study among young and elderly subjects, both normal and with gingivitis
806 and periodontitis." J Indian Soc Periodontol **17**(1): 42-46.

807 Sharif, K., V. Vieira Borba, G. Zandman-Goddard and Y. Shoenfeld (2018). "Eppur Si Muove: ferritin is
808 essential in modulating inflammation." Clin Exp Immunol **191**(2): 149-150.

809 Soriano, J. B., S. Murthy, J. C. Marshall, P. Relan, J. V. Diaz and W. C. C. D. W. G. o. P.-C.-. Condition (2022).
810 "A clinical case definition of post-COVID-19 condition by a Delphi consensus." Lancet Infect Dis **22**(4):
811 e102-e107.

812 Sullivan, J. L., W. R. Osborne and R. J. Wedgewood (1977). "Adenosine deaminase activity in lymphocytes."
813 Br J Haematol **37**(1): 157-158.

814 Taquet, M., Q. Dercon, S. Luciano, J. R. Geddes, M. Husain and P. J. Harrison (2021). "Incidence, co-
815 occurrence, and evolution of long-COVID features: A 6-month retrospective cohort study of 273,618
816 survivors of COVID-19." PLoS Med **18**(9): e1003773.

817 Tecles, F., M. Fuentes-Rubio, A. Tvarijonaviciute, S. Martínez-Subiela, J. Fatjó and J. J. Cerón (2014).
818 "Assessment of stress associated with an oral public speech in veterinary students by salivary biomarkers."
819 J Vet Med Educ **41**(1): 37-43.

820 Tvarijonaviciute, A., C. Aznar-Cayuela, C. P. Rubio, J. J. Ceron and P. López-Jornet (2017). "Evaluation of
821 salivary oxidate stress biomarkers, nitric oxide and C-reactive protein in patients with oral lichen planus
822 and burning mouth syndrome." *J Oral Pathol Med* **46**(5): 387-392.

823 Tvarijonaviciute, A., C. Aznar-Cayuela, C. P. Rubio, F. Tecles, J. J. Ceron and P. López-Jornet (2018). "Salivary
824 Antioxidant Status in Patients with Oral Lichen Planus: Correlation with Clinical Signs and Evolution during
825 Treatment with." *Biomed Res Int* **2018**: 5187549.

826 Tyrkalska, S. D., A. Martinez-Lopez, A. B. Arroyo, F. J. Martinez-Morcillo, S. Candel, D. Garcia-Moreno, P.
827 Mesa-Del-Castillo, M. L. Cayuela and V. Mulero (2022). "Differential proinflammatory activities of Spike
828 proteins of SARS-CoV-2 variants of concern." *Sci Adv* **8**(37): eabo0732.

829 Vargas-Vargas, M. and C. Cortés-Rojo (2020). "Ferritin levels and COVID-19." *Rev Panam Salud Publica* **44**:
830 e72.

831 Vijayamahantesh, A. Amit, M. R. Dikhit, R. K. Pandey, K. Singh, R. Mishra, V. N. Das, P. Das and S. Bimal
832 (2016). "Elevated Serum ADA Activity as a Marker for Diagnosis and Prognosis of Visceral Leishmaniasis
833 and Post Kala-Azar Dermal Leishmaniasis in Indian Patients." *PLoS One* **11**(5): e0154117.

834 Vona, R., L. Pallotta, M. Cappelletti, C. Severi and P. Matarrese (2021). "The Impact of Oxidative Stress in
835 Human Pathology: Focus on Gastrointestinal Disorders." *Antioxidants (Basel)* **10**(2).

836 Wiersinga, W. J., A. Rhodes, A. C. Cheng, S. J. Peacock and H. C. Prescott (2020). "Pathophysiology,
837 Transmission, Diagnosis, and Treatment of Coronavirus Disease 2019 (COVID-19): A Review." *JAMA*
838 **324**(8): 782-793.

839 Witko-Sarsat, V., M. Friedlander, C. Capeillère-Blandin, T. Nguyen-Khoa, A. T. Nguyen, J. Zingraff, P.
840 Jungers and B. Descamps-Latscha (1996). "Advanced oxidation protein products as a novel marker of
841 oxidative stress in uremia." *Kidney Int* **49**(5): 1304-1313.

842 Wolf, J. M., E. Nicholls and E. Chen (2008). "Chronic stress, salivary cortisol, and alpha-amylase in children
843 with asthma and healthy children." *Biol Psychol* **78**(1): 20-28.

844 Yelin, D., E. Wirtheim, P. Vetter, A. C. Kalil, J. Bruchfeld, M. Runold, G. Guaraldi, C. Mussini, C. Gudiol, M.
845 Pujol, A. Bandera, L. Scudeller, M. Paul, L. Kaiser and L. Leibovici (2020). "Long-term consequences of
846 COVID-19: research needs." *Lancet Infect Dis* **20**(10): 1115-1117.

847 Yoon, S. H., J. H. Lee and B. N. Kim (2023). "Chest CT Findings in Hospitalized Patients with SARS-CoV-2:
848 Delta versus Omicron Variants." *Radiology* **306**(1): 252-260.

849 Yoshizawa, J. M., C. A. Schafer, J. J. Schafer, J. J. Farrell, B. J. Paster and D. T. Wong (2013). "Salivary
850 biomarkers: toward future clinical and diagnostic utilities." *Clin Microbiol Rev* **26**(4): 781-791.

851 Zandman-Goddard, G. and Y. Shoenfeld (2007). "Ferritin in autoimmune diseases." *Autoimmun Rev* **6**(7):
852 457-463.

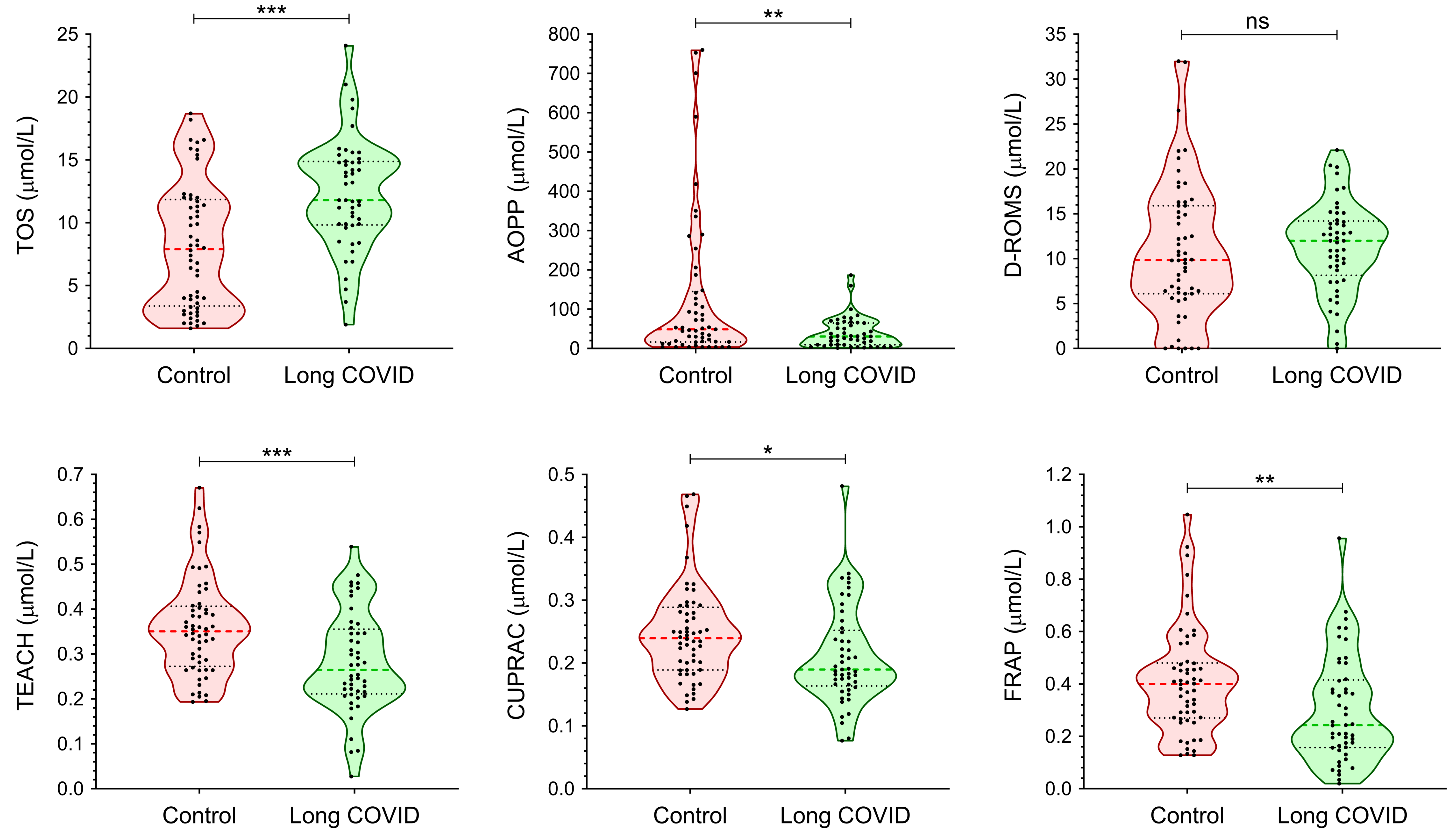
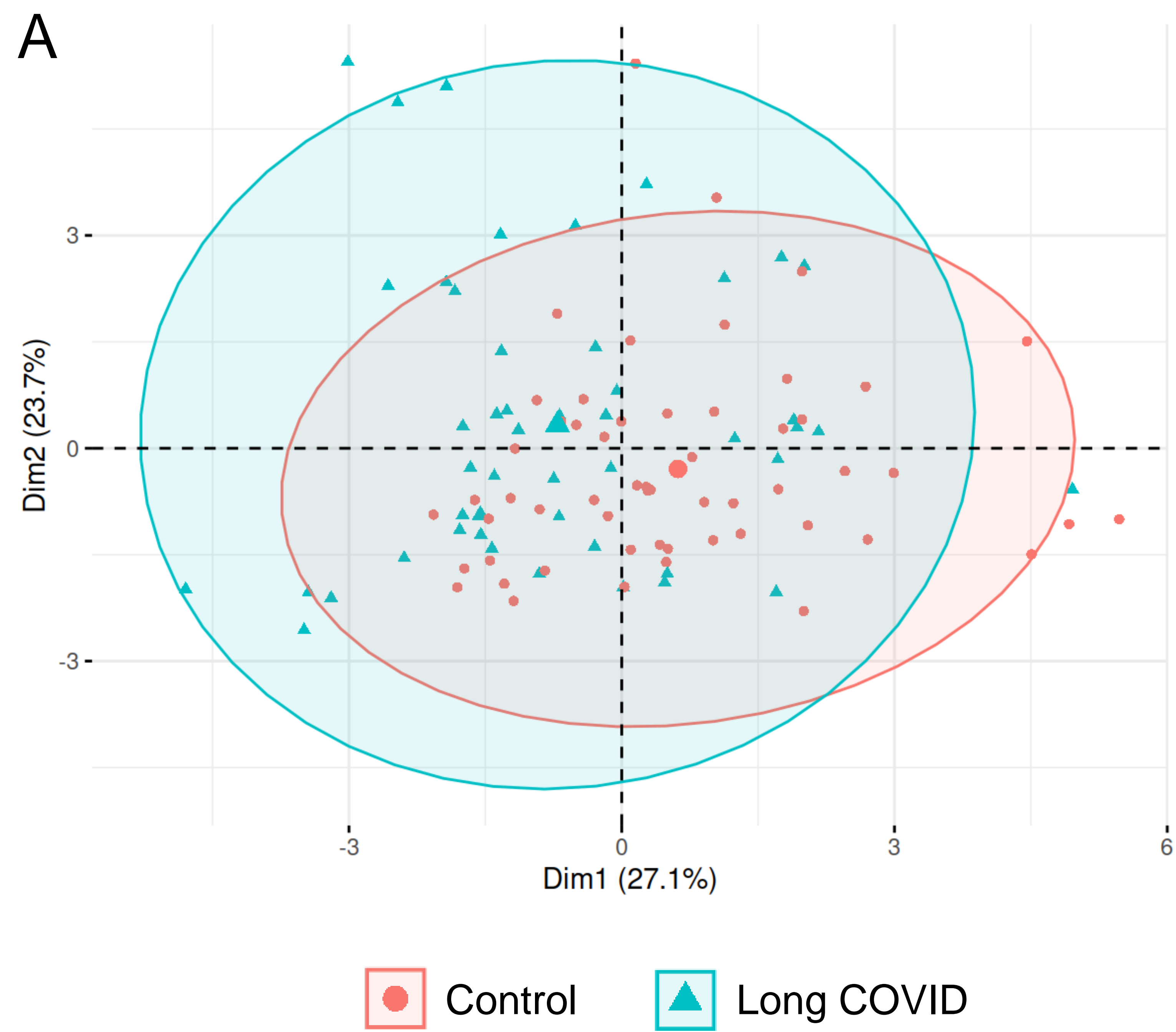
853 Zhang, L., H. Xiao and D. T. Wong (2009). "Salivary biomarkers for clinical applications." *Mol Diagn Ther*
854 **13**(4): 245-259.

855 Zhu, N., D. Zhang, W. Wang, X. Li, B. Yang, J. Song, X. Zhao, B. Huang, W. Shi, R. Lu, P. Niu, F. Zhan, X. Ma,
856 D. Wang, W. Xu, G. Wu, G. F. Gao, W. Tan and C. N. C. I. a. R. Team (2020). "A Novel Coronavirus from
857 Patients with Pneumonia in China, 2019." *N Engl J Med* **382**(8): 727-733.

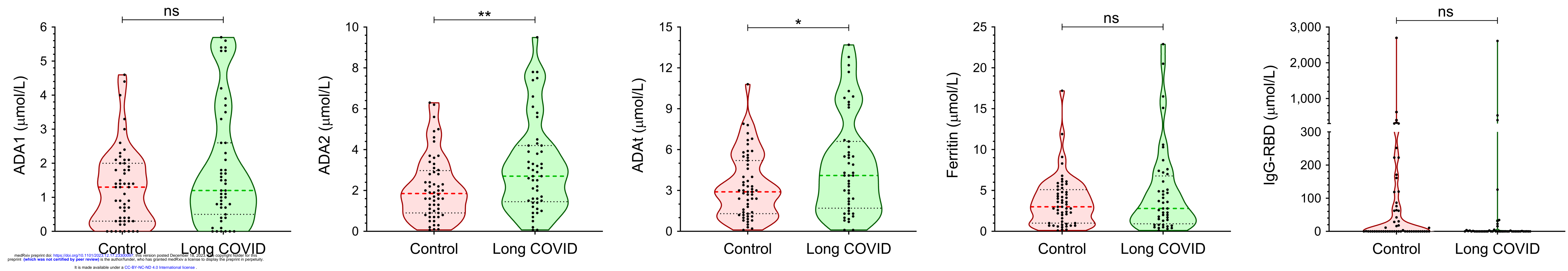
858

Figure 1

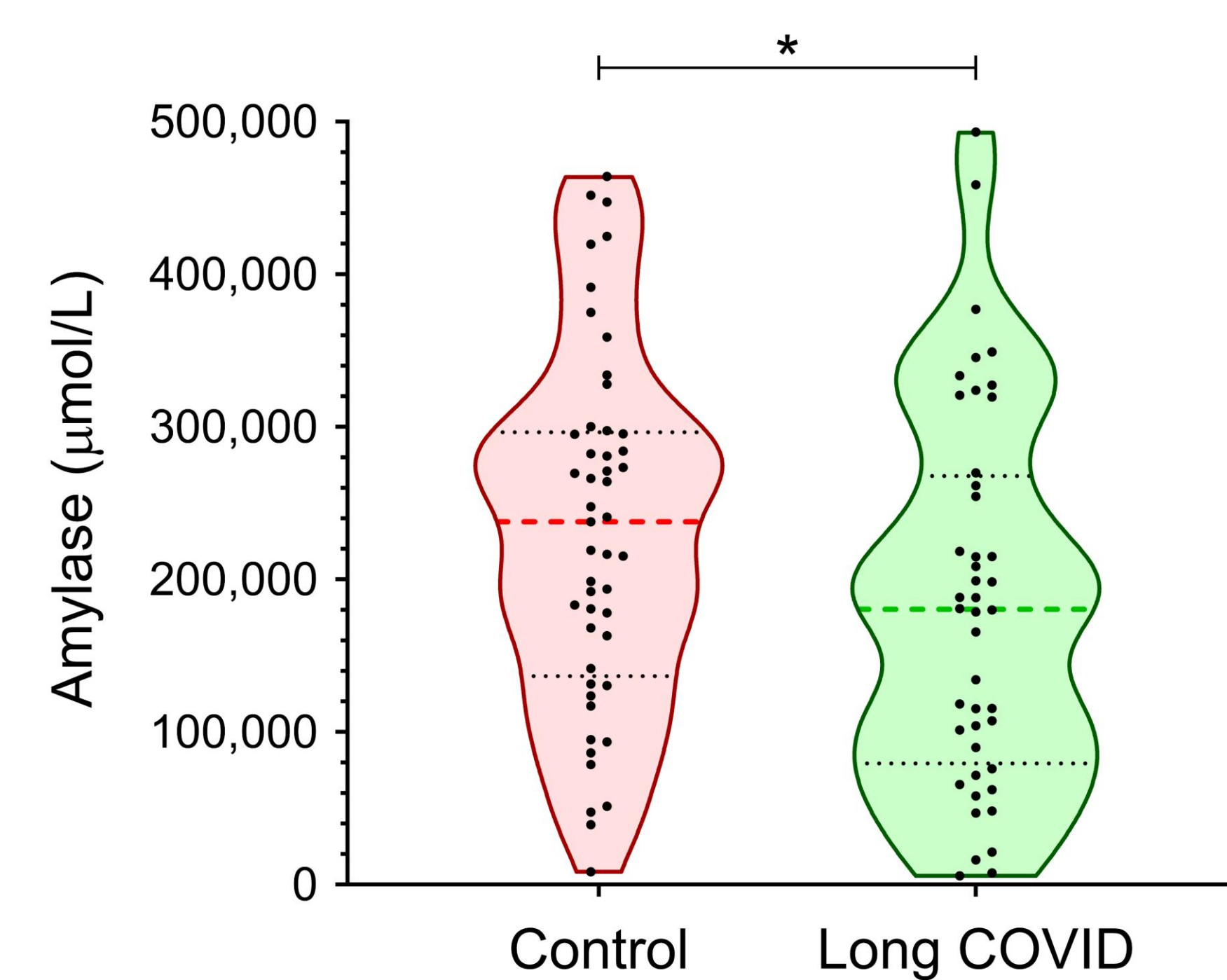
B: Redox status



C: Immune response



D: Stress levels



E: General homeostatic status

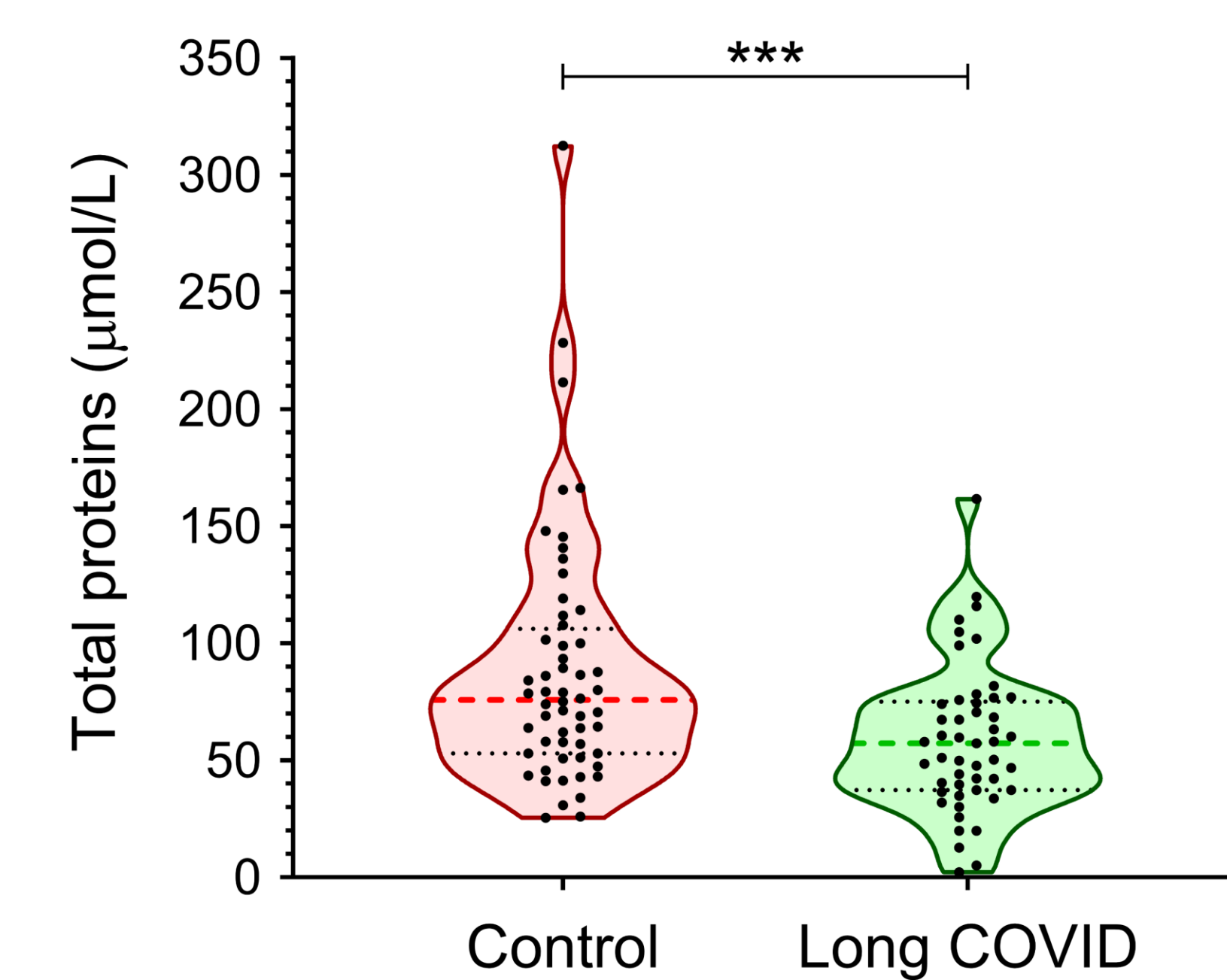
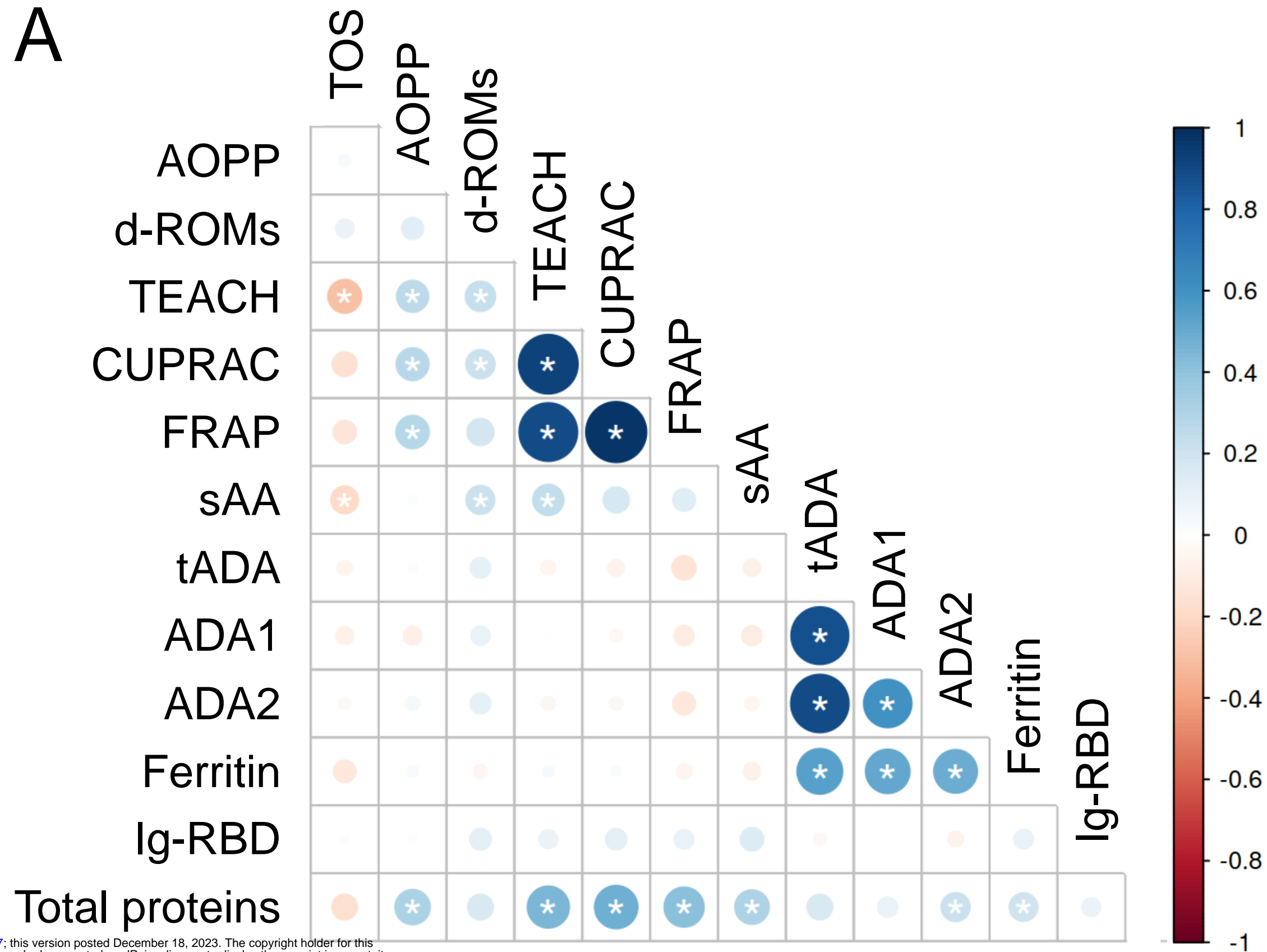


Figure 2



medRxiv preprint doi: <https://doi.org/10.1101/2023.12.17.23300097>; this version posted December 18, 2023. The copyright holder for this preprint (which was not certified by peer review) is the author/funder, who has granted medRxiv a license to display the preprint in perpetuity. It is made available under a [CC-BY-NC-ND 4.0 International license](https://creativecommons.org/licenses/by-nc-nd/4.0/).

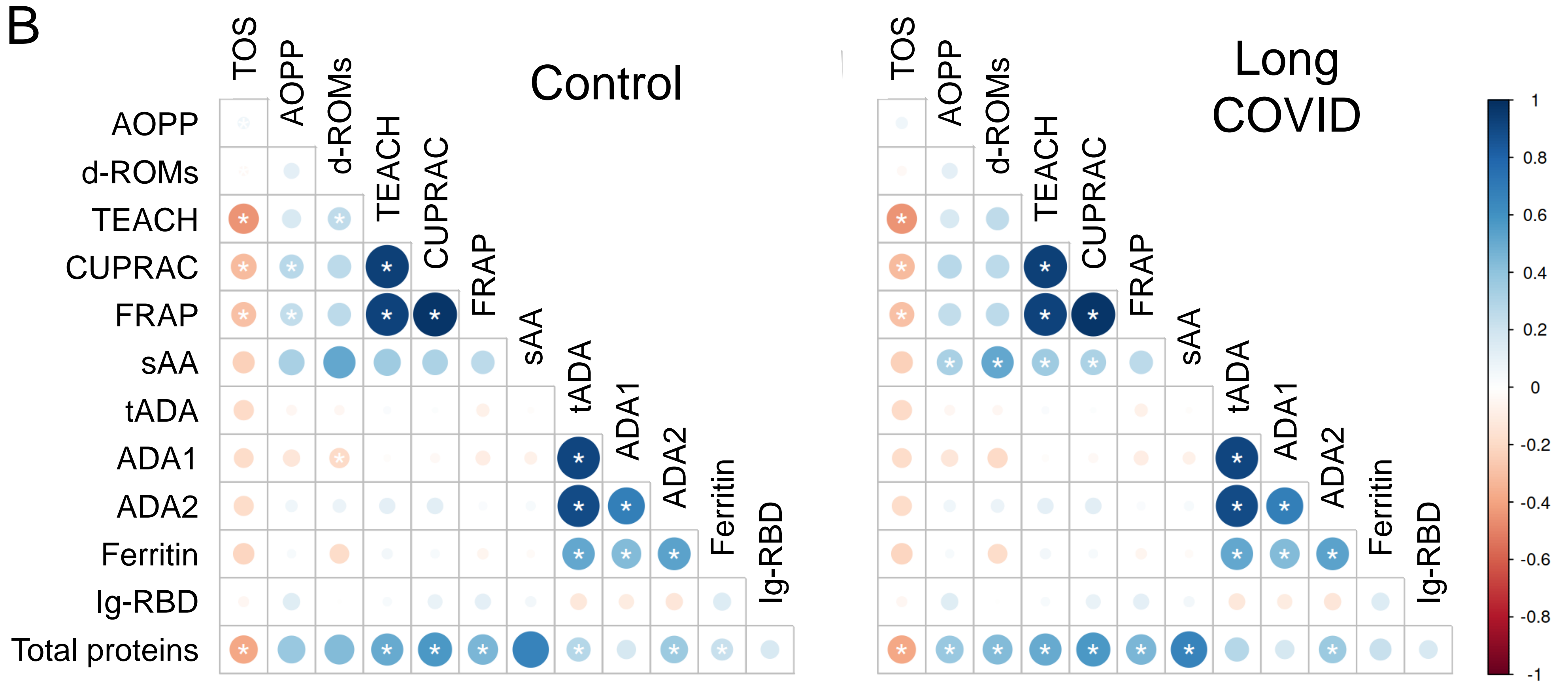


Figure 3

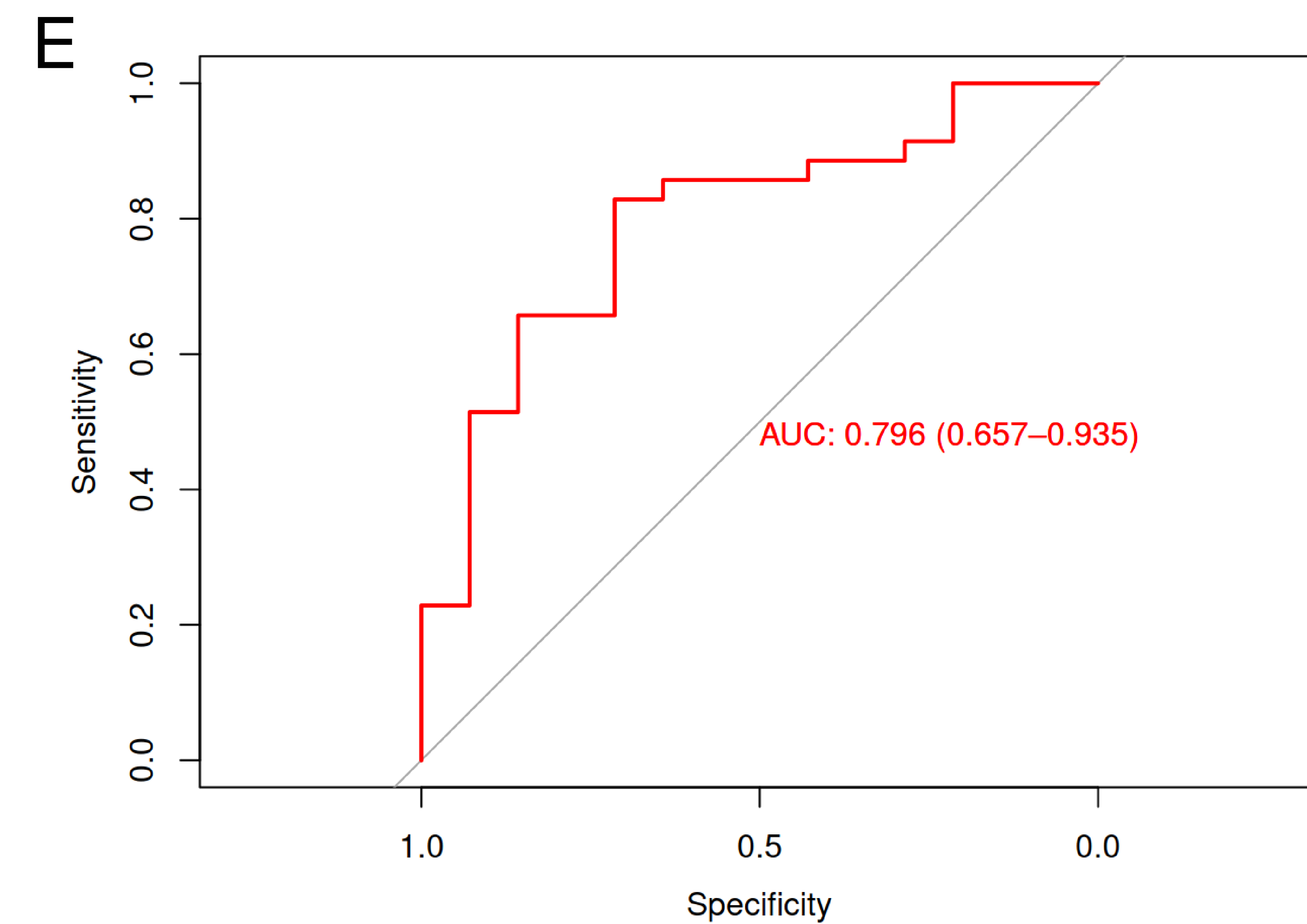
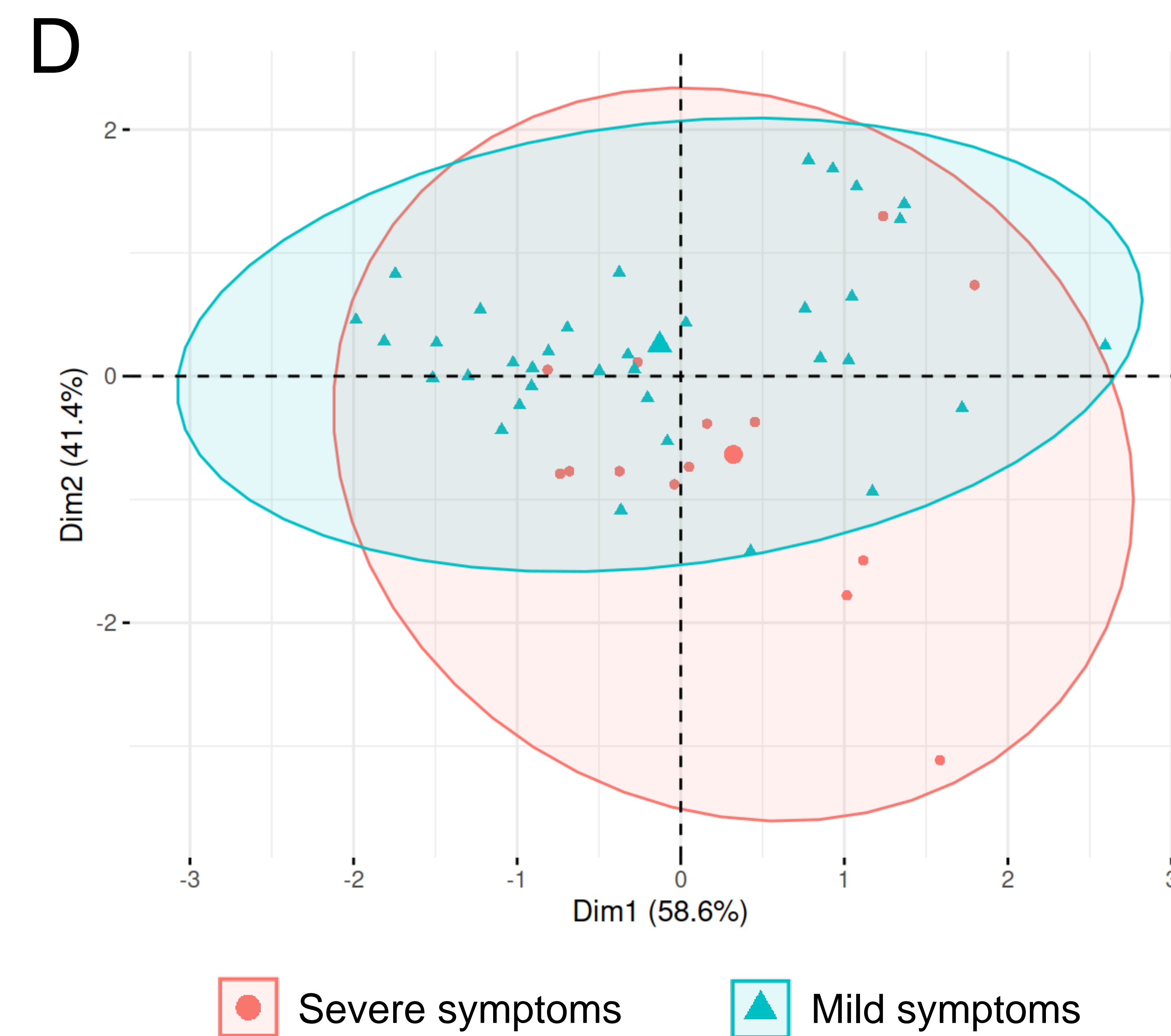
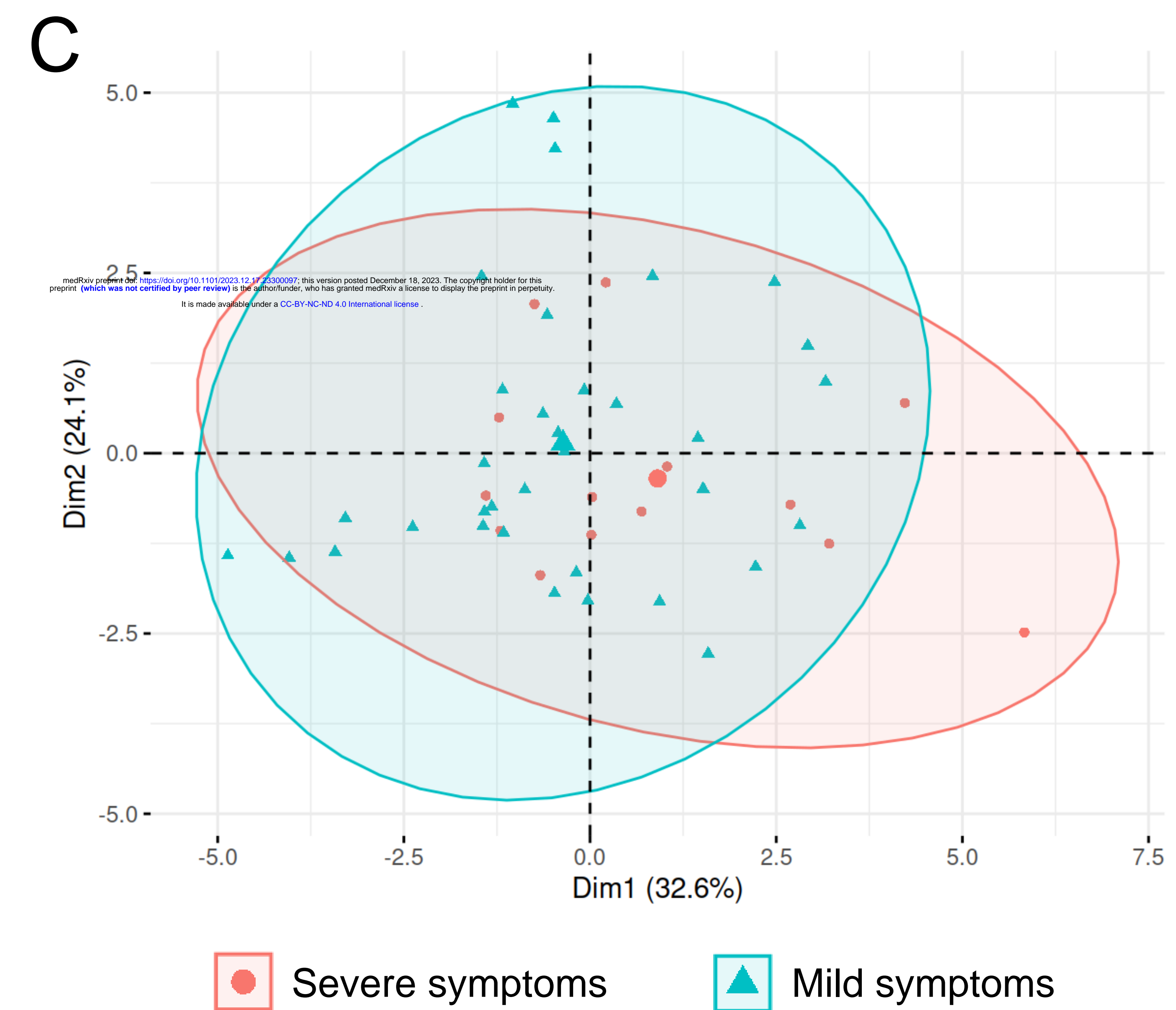
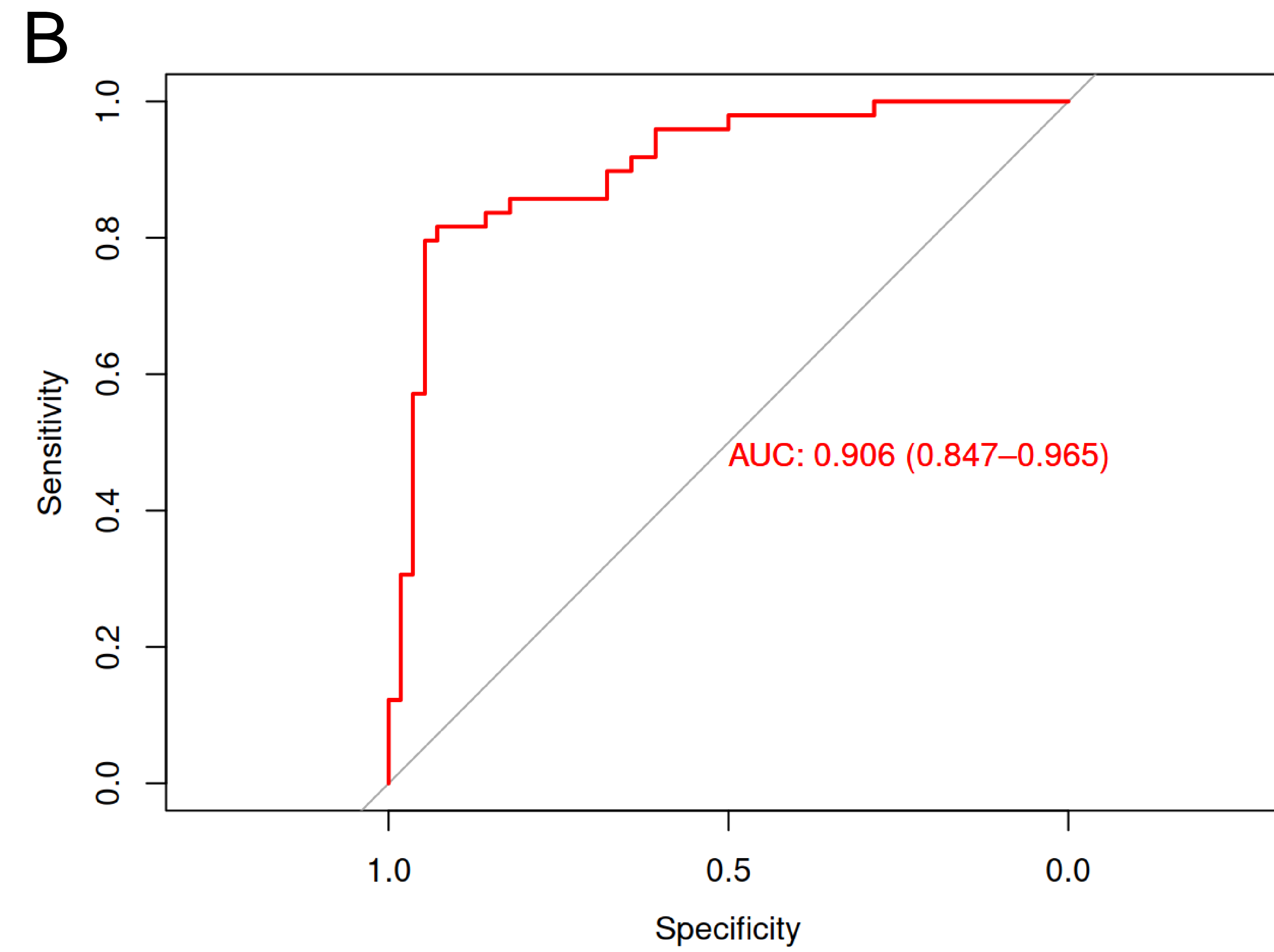
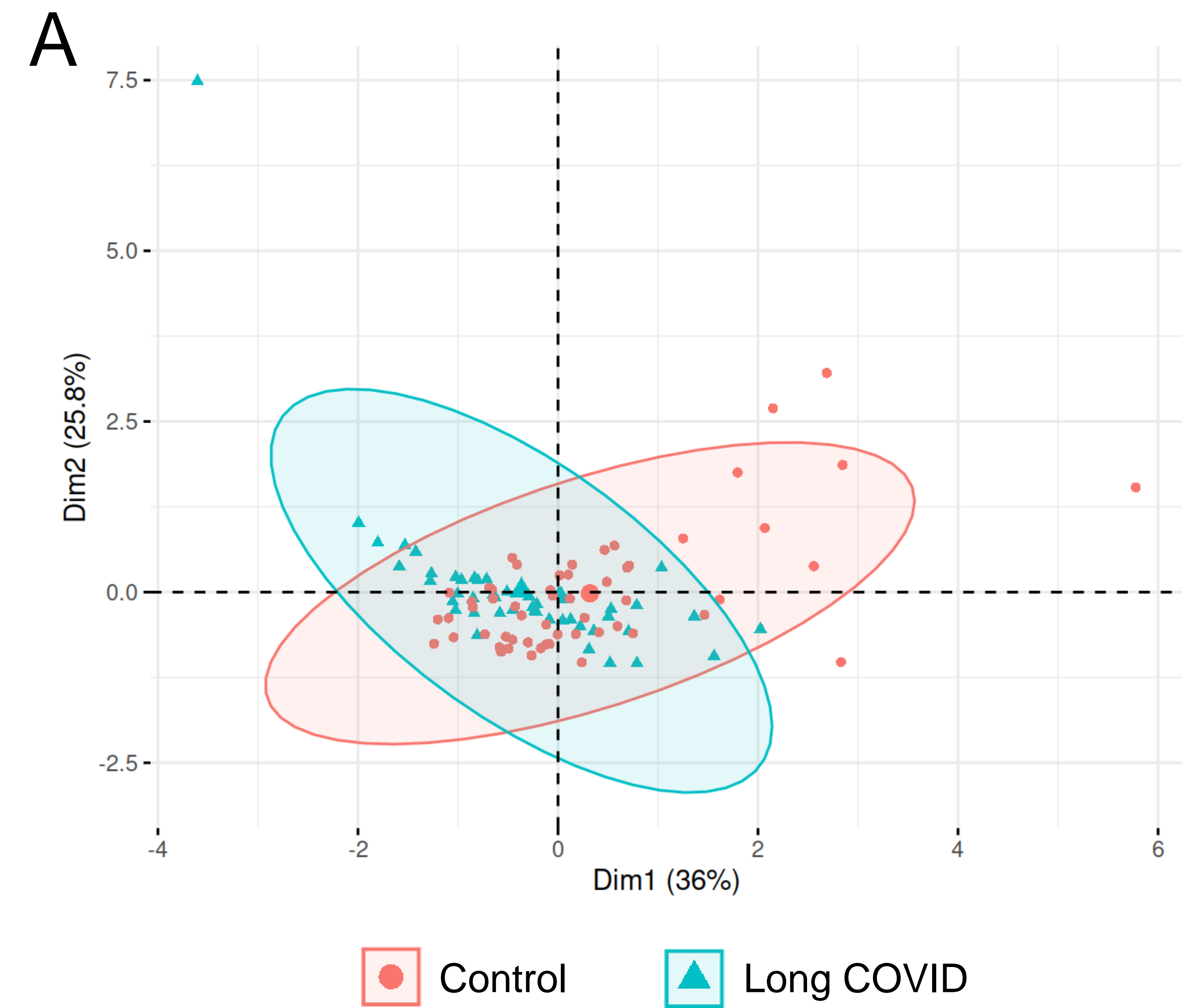
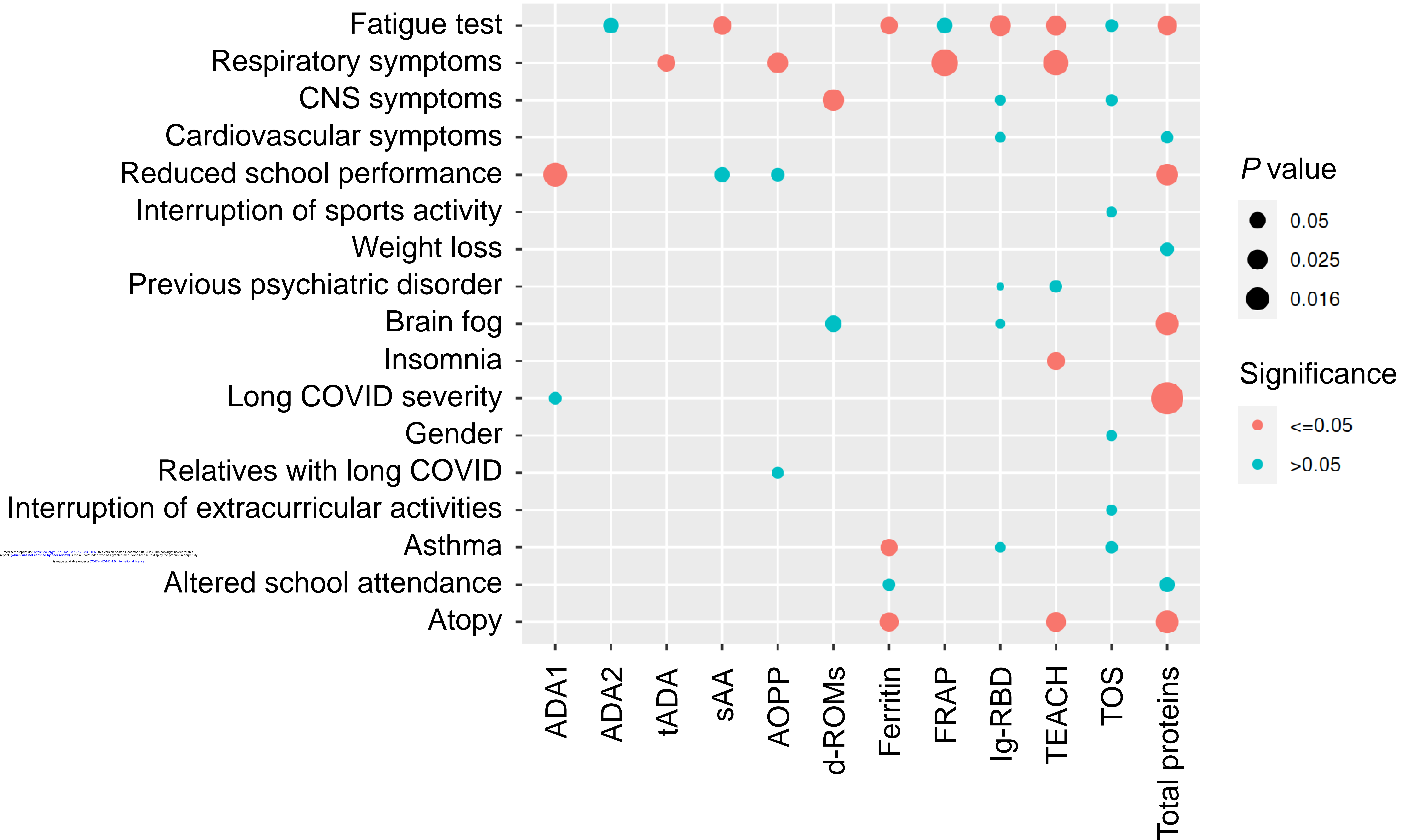


Figure 4



medRxiv preprint doi: <https://doi.org/10.1101/2023.12.17.23300097>; this version posted December 18, 2023. The copyright holder for this preprint (which was not certified by peer review) is the author/funder, who has granted medRxiv a license to display the preprint in perpetuity. It is made available under a CC-BY-NC-ND 4.0 International license.

Table 1. Long COVID patient demographics and clinical information

Number of patients	49
Average diagnosis age (range)	13.3 (9-18)
Female sex (%)	34 (69.4)
Mild long COVID (%)	35 (71.4)
Severe long COVID (%)	14 (28.6)
Relatives with long COVID (%)	15 (30.6)
Previous psychiatric disorder (%)	5 (10.2)
Atopy (%)	7 (14.3)
Asthma (%)	4 (8.2)
Fatigue test with 'high' or 'very high' result (%)	22 (44.9)
CNS symptoms (%)	39 (79.6)
Brain fog (%)	29 (59.2)
Weight loss (%)	11 (22.4)
Respiratory symptoms (%)	29 (59.2)
Cardiovascular symptoms (%)	32 (65.3)
Insomnia (%)	23 (46.9)
Altered school attendance (%)	14 (28.6)
Reduced school performance (%)	22 (44.9)
Interruption of extracurricular activities (%)	24 (49.0)
Interruption of sports activity (%)	26 (53.1)