

1 **Adiposity and Sex Influence on SARS-CoV-2 Antibody**
2 **Response in University Students. An ESFUERSO**
3 **cross-sectional study.**

4

5 Adriana L. Perales-Torres, PhD, 1,

6 Lucia M. Perez-Navaro, PhD, 2,

7 Esperanza M. Garcia-Oropesa PhD 1,

8 Alvaro Diaz-Badillo, PhD 3,4,

9 Yoscelina Estrella Martinez-Lopez, PhD 5,

10 Marisol Rosas, PhD 1,

11 Octelina Castillo PhD 1,

12 Laura Ramirez-Quintanilla, MSc 1,

13 Jacquelynne Cervantes PhD 6,

14 Edda Sciutto PhD 7,

15 Claudia X. Munguia Cisneros MPH, 8,

16 Carlos Ramirez-Pfeifer PhD 4,10,

17 Leonel Vela MD, MPH 9,

18 Beatriz Tapia, MD EdD, MPH 9,

19 Juan C. Lopez-Alvarenga, MD, PhD 4, 9

20

21 1. Unidad Académica Multidisciplinaria Reynosa Aztlan, Universidad Autónoma de

22 Tamaulipas, Reynosa, Tamaulipas, México.

23 2. Departamento de Nefrología. Hospital General de México Dr. Eduardo Liceaga.

24 Mexico City.

25 3. Public Health Research Group, Department of Life Sciences, Texas A&M

26 University-San Antonio, USA.

27 4. Escuela de Medicina. Universidad México Americana del Norte. Reynosa,

28 Tamaulipas, Mexico.

29 5. School of Public Health, University of Texas Health Science Center at Houston,

30 Brownsville, TX, USA.

31 6. Facultad de Medicina Veterinaria y Zootecnia, Universidad Nacional Autónoma de

32 México. Mexico City.

33 7. Instituto de Investigaciones Biomedicas, Universidad Nacional Autónoma de

34 México, Mexico City.

35 8. Centro Especializado de Diabetes y Metabolismo CEDIAMET. Universidad Mexico

36 Americana del Norte. Reynosa, Tamaulipas, Mexico.

37 9. School of Medicine. University of Texas Rio Grande Valley, UTRGV. Edinburg,

38 Texas, U.S.A.

39

40 Note: Partial results of this study were presented in the UTRGV 2020 Research

41 Symposium won a prize for best oral presentation. Dataset is available at the

42 https://scholarworks.utrgv.edu/cgi/ir_submit.cgi?context=som_pub

43

44 Dr. Juan Carlos Lopez Alvarenga, MD, PhD

45 University Dr 1201. Edinburg Texas 78539. USA

46 Mail: juan.lopezalvarenga@utrgve.edu

47

48

49 **Abstract**

50 **Introduction.** Prior studies have identified various determinants of differential immune
51 responses to COVID-19. This investigation delves into the Ig-G anti-RBD marker,
52 scrutinizing its potential correlations with sex, vaccine type, body fat percentage,
53 metabolic risk, perceived stress, and previous COVID-19 exposure.

54 **Methods.** In this study, data were obtained from 116 participants from the ESFUERSO
55 cohort, who completed questionnaires detailing their COVID-19 experiences and stress
56 levels assessed through the SISCO scale. Quantification of Ig-G anti-RBD
57 concentrations was executed using an ELISA assay developed by UNAM. Multiple
58 regression analysis was adeptly employed to control for covariates, including sex, age,
59 body fat percentage, BMI, and perceived stress.

60 **Results.** This sample comprised young individuals (average age of 21.4 years),
61 primarily consisting of females (70%), with a substantial proportion reporting a family
62 history of diabetes, hypertension, or obesity. Most students had received the Moderna or
63 Pfizer vaccines, and 91% displayed a positive anti-RBD response.

64 A noteworthy finding was the interaction between body fat percentage and sex. In
65 males, increased adiposity was associated with a decrease in Ig-G anti-RBD
66 concentration, while in females, the response increased. Importantly, this trend was
67 consistent regardless of the vaccine received. No significant associations were observed
68 for variables such as dietary habits or perceived stress.

69 **Conclusions.** In summation, this research reports the impact of both sex and body fat
70 percentage on the immune response through Ig-G anti-RBD levels to COVID-19
71 vaccines. The implications of these findings offers a foundation for educational
72 initiatives and the formulation of preventive policies aimed at mitigating health
73 disparities.

74 **Introduction**

75 To understand factors that can impact the serum levels of antibodies produced by the
76 COVID-19 vaccine, many studies have been conducted. Age is a critical factor that
77 plays a significant role in determining the immune response. Elderly individuals with
78 obesity and non-prior infection had reduced antibody titers against SARS-CoV-2 spike
79 antigen after CoronaVac vaccine (manufactured in China) compared to non-obese
80 people.(1) Lower antibody response, after receiving two doses of the Pfizer vaccine, has
81 also been linked to central obesity (correlation of $r = -0.3$), presence of hypertension and
82 smoking habits, with no notable differences by gender.(2)

83 Interestingly, losing weight has been shown to improve the adaptive immune response
84 particularly an increase in INF- γ levels following administration of two doses of
85 mRNA vaccine.(3)

86 Sex and body weight interaction can also result in varying immune responses. For
87 individuals with a BMI >40 kg/m², there were no discernible differences in IgG
88 antibody levels between sexes. In contrast, those with normal weight showed higher
89 levels among males.(4)

90 The present study focused on a nested sample of students from the ESFUERSO
91 program, which recruited first-year college students living in Reynosa prior the
92 COVID-19 pandemic in 2018. This group of students reported a significant family
93 history of type 2 diabetes (T2D) with 25% having family history of the condition, and
94 39% having family history of hypertension. Interestingly, between 17 to 47% students
95 were unsure whether their first-degree relatives suffered from T2D, hypertension, or
96 other obesity-related metabolic issues, as documented in the ESFUERSO study.

97 These young students experienced impact from the COVID-19 pandemic, forcing them
98 to home confinement, which led to changes in their food intake, physical activity, and

99 increased psychological stress. Vaccination efforts began in 2021, employing novel
100 mRNA vaccine used in veterinary science for three decades.
101 During the pandemic, it was evident that metabolic imbalances associated with obesity
102 could increase the severity of COVID-19 and the risk of mortality.(5, 6) The aim of this
103 study was to analyze the immune response to the receptor-binding domain (RBD), a
104 protective epitope found in the S protein, using Ig-G response among young students
105 from Mexico, living near the US-Mexico border. The study provides insights in the
106 immune response and the potential implications in the context of COVID-19.

107

108

109 **Methods**

110 **Study Sample**

111 In 2018, the ESFUERSO (Estudio en la Frontera Urbana para las Enfermedades y
112 Factores Asociados a la Obesidad) cohort study was launched, with its focus on first-
113 year students from two universities in Reynosa, Tamaulipas. Initially, the parental
114 sample included 500 students. However, due to the pandemic, a subset of 116 students
115 was contacted between September 1st and October 31st, 2021. During this period, we
116 obtained signed informed consent (see Ethics Statement below for details), conducted
117 questionnaire surveys, collected anthropometric measurements, and collected blood
118 samples from 108 students.

119

120 **Measures**

121 The questionnaires and methods used in the ESFUERSO study have been described
122 elsewhere.(7) Briefly, the questionnaires collected information on family metabolic risk,
123 anxiety, depression and uncertainty. The Cronbach α coefficient from each question
124 ranged from 0.72–0.96. The test-retest for agreement in categorical variables was a
125 kappa coefficient between 0.5–0.91 and an intraclass correlation coefficient between
126 0.73–0.96 in continuous variables. The stress during the pandemic was evaluated with
127 the Coping Inventory for Stressful Situations (SISCO), composed of five stressors, five
128 symptoms and five coping strategies. The SISCO had a Cronbach α coefficient of 0.9
129 with high homogeneity and was validated in Mexico and other Latin American
130 countries.(8) All the questionnaires were administered electronically, with students
131 completing them on their own cellphones. This approach ensured efficient data
132 collection and minimized the need for physical paperwork or in-person administration.
133 Weight, height, acanthosis nigricans grade(9) were assessed and registered at the
134 universities by standardized nutritionist.(7) Blood samples were obtained after an
135 overnight fasting period for the measurement of serum concentration of Ig-G anti-RBD
136 by indirect ELISA.(10) Following collections, the samples underwent centrifugation,
137 and four aliquots were stored at -20 C. These aliquots were subsequent transported to
138 Mexico City in November 2021 for antibody analysis. The assessment of the effective
139 neutralizing concentration of anti-RBD IgG was carried out, and this variable was
140 analyzed in both continuous and dichotomous dimensions. A threshold of 1.0 for anti-
141 RBD IgG ratio was established to differentiate between effective and non-effective
142 neutralization.

143

144 **Ethics Statement**

145 The protocol and informed consent were approved by the Comité de Ética Institucional
146 de la Unidad Académica Multidisciplinaria Reynosa-Aztlán (CEI-UAMRA) number
147 registration CEI-UAMRA 005/2019/CEI under Health normativity (NOM-012-SSA-3-
148 212). All participants signed the approved informed consent. The present report
149 followed the STROBE recommendations for cross-sectional studies.(11)
150

151 **Statistical analysis**

152 Descriptive statistics with percentage for counts variables, mean and standard deviation
153 for continuous variables. Inferential statistics with regressions was used for the SISCO
154 questionnaire for anxiety, uncertainty, sadness, lack of sleep was contrasted by the
155 presence of metabolic risk. Locally weighted regression (lowess) was performed to
156 analyze nonlinear functions. We used the antibody concentration as dependent variable
157 adjusted for sex, age, metabolic risk, body fat percentage and BMI. Multiplicative
158 interactions for covariates were analyzed. Variance inflation factors (VIF) was
159 calculated to evaluate multicollinearity for lineal models without interactions. The
160 models were evaluated using first to third grades polynomial multiple regression and
161 goodness of fit with mean squared error calculation. The best goodness of fit for data
162 was polynomial multiple regression with 114 students with all complete data. All
163 analyses were performed with Stata V18.0 (StataCorp, College Station, TX).
164

165 **Results**

166 A total of 108 students in the ESFUERSO cohort were enrolled during the 3rd year of
167 the cohort follow-up in Reynosa. The participants had mean age of 21.4 (SD 1.0) years,
168 average BMI of 27.9 (SD 6.2), and gender distribution of 69% (75 out of 108) females.
169 A significant family risk of T2D, hypertension, presence of obesity, or a combination of
170 these conditions was identified in 70% of the students. Notably, there were no
171 discernible differences by universities on metabolic risk, anthropometry, sex, and
172 commercial brand of vaccine or presence of adequate antibody levels. Only 3 (3%)
173 students from the private university had no COVID-19 vaccination at the time of the
174 study and they also belonged to the metabolic risk group (Pearson standardized distance
175 >3.0). From vaccinated students 97 (90%) were vaccinated with Moderna or Pfizer and
176 only 8 (7%) with other vaccines (Johnson & Johnson n=1, Cansino n=6, Sinovac n=1).
177 The prevalence of positive anti-RBD was 91%.
178

Variable	Females (n= 75)	Males (n= 33)
Continuous variables [Average (SD)]		
Age (years)	21.4 (1.1)	21.4 (0.9)
BMI (kg/m ²)	27.7 (6.1)	28.4 (6.3)
Body fat (%)	33.04 (10.45)	24.2 (10.34)
Waist circumference (cm)	83.3 (13.2)	91.9 (13.7)
Neck circumference (cm)	34.4 (3.2)	40.4 (10.6)
Systolic blood pressure (mmHg)	113 (9)	120.8 (18.7)
Diastolic blood pressure (mmHg)	77 (7)	81.1 (92.9)
Ordinal variables [median (Q1, Q3)]		

Anguish	3 (2, 5)	3 (1, 4)
Uncertainty	3 (2, 4)	2 (1, 4)
Lack of sleep	4 (2, 5)	2 (1, 3)
Sadness	3 (3, 5)	2 (1, 3.5)
Anxiety	4 (3, 5)	3 (1.5, 4)
Acanthosis nigricans	0 (0, 2)	1 (0, 2)

179 **Table 1.** Descriptive Statistics of General Variables by Sex. Continuous variables are
180 presented as mean and standard deviation. Ordinal variables, such as the perceived
181 stress items of the SISCO questionnaire, are described using a 6-point Likert scale (0 =
182 none, 5 = highest score). Acanthosis nigricans is described by its median and
183 interquartile range (Q1, Q3).
184
185 The multicollinearity analysis showed BMI and fat percentage had VIF= 4.8 and
186 $1/VIF= 0.02$, most models were analyzed separating both variables. The body fat
187 percentage interaction with sex was statistically significant, explaining why the serum
188 concentration of anti-RBD decreased as adiposity increased in men ($p=0.034$ for second
189 grade term), but Ab-RBD increased with increased adiposity in women ($p=0.01$,
190 $p=0.015$ for second and third grade terms) (Figure 1). The interaction remained in spite
191 of the type of vaccine. The adjusted model minimized the mean squared error (0.51 and
192 $R^2= 0.14$), compared with other models (MSE between 0.54 to 0.56, and R^2 between
193 0.04 and 0.07) (Figure 2). The residuals adjusted a normal distribution (Shapiro-Wilkins
194 $p=0.136$).
195 No differences due to metabolic risk factors or effective antibody concentration were
196 found, for food consumption, distress, and uncertainty, lack of sleep, sadness, and
197 anxiety.

198

199 **Figure 1.** Sex Differences Analyzed with Locally Weighted Regression (Lowess)

200 Function. This figure displays the relationship between neutralizing anti-RBD IgG ratio
201 and body fat percentage in a sample of university students. Females are represented by
202 diamonds, and males by crosses. The Lowess curve for females is shown as a
203 continuous line, while for males, it is depicted as a discontinuous line.

204

205 **Figure 2.** Adjusted Function of Anti-RBD IgG Ratio Predicted by Body Fat Percentage.

206 This figure illustrates the relationship between anti-RBD IgG ratio and body fat
207 percentage using a 3rd-grade polynomial regression model. For males, a 2nd-grade
208 polynomial is sufficient. Females are represented by white circles, and males by black
209 circles.

210

211 **Discussion**

212 Based on the results of our study, it appears that the neutralizing anti-RBD response to
213 the COVID-19 vaccine is influenced by a multiplicative interaction of sex and body fat
214 percentage. Specifically, females tend to have increased responses while males tend to
215 have decreased responses (Figure 2). Stress scores do not appear to have significant
216 effects.

217 This observation aligns with existing research on sex-based differences in immune
218 responses. For instance, a study involving the Cameron County Hispanic Cohort, which
219 included 624 participants with a mean age of 50 (SD 14) years, has previously reported
220 sex-specific variations in adipokines and carotid intima media thickness.(12) The
221 present study extends these findings to a younger cohort, specifically individuals in the
222 final stages of adolescence residing near the U.S.-Mexico border. This highlights the

223 relevance of considering age and geographic location when examining immune
224 response differences between sexes.

225 Additionally, another study conducted in Mexico on 980 adult participants with a
226 median age of 50 (Q1: 36, Q3: 54) who had obesity before mass vaccination sheds light
227 on this matter. (13) The authors identified independent factors associated with SARS-
228 Cov-2 infection in a symptomatic group. Their findings revealed higher levels of anti-
229 S1/2 antibodies in individuals with conditions like advanced age, type 2 diabetes,
230 hypertension, and a positive correlation with body mass index (BMI). Furthermore,
231 women exhibited higher levels of anti-RBD IgG antibodies compared to men. This
232 study highlighted the heightened vulnerability of individuals with underlying health
233 conditions or obesity to SARS-CoV-2 infection. In contrast, the ESFUERSO cohort
234 focused on a younger population who received vaccinations, providing valuable insights
235 into this demographic group.

236 Other populations have reported similar findings. Yamamoto et al.(14), reported sex-
237 associated differences in the relationship between body mass index and SARS-CoV-2
238 antibody titers following the BNT162b2 vaccine in a study of 2,435 healthcare workers
239 in Japan. Additionally, a meta-analysis examining antibody responses to COVID-19
240 vaccinations also indicated a significant association between obesity and reduced
241 antibody response. (15) Nevertheless, the considerable heterogeneity (88%) observed
242 across studies suggests that biological factors, including sex, age, and body fat play a
243 pivotal role in this outcomes.

244 Tailoring vaccination plans based on an individual's characteristics may enhance
245 vaccine effectiveness. Addressing gender-specific and body fat-related factors in public
246 health interventions have the potential to reduce infection rates. Using the provided
247 information in this study can help in programs to educate individuals about their

248 susceptibility to infections considering the social determinants in the U.S.-Mexico
249 border region.

250 **Limitations**

251 While the present study yields valuable insights, it is important to acknowledge several
252 potential limitations. Variations in immune responses across different age groups, the
253 influence of genetic factors, and the impact of social determinants can introduce
254 complexities that our study may not fully capture. Moreover, it's essential to recognize
255 that the study's cross-sectional design allows identifying associations but does not
256 establish causality. These considerations emphasize the need for caution in generalizing
257 the findings and highlight avenues for further research.

258 In summary, this study provides novel insights into the response of anti-RBD IgG
259 antibodies to vaccination in a young cohort. The findings reveal a complex relationship
260 between sex and body fat percentage, depicted by a third-degree polynomial curve
261 (Figure 2). This emphasizes the intricate interplay between body fat and the immune
262 response to vaccines and accentuates the importance of considering sex-specific factors,
263 especially among younger individuals. Comprehensive knowledge of distinct
264 characteristics and immunological responses, help to understand social and biological
265 dynamics for tailoring vaccination strategies, optimizing public health interventions and
266 reducing health disparities

267

268

269 **Acknowledgments**

270 Preliminary results of this study were presented and recognized as the best oral clinical
271 presentation at the UTRGV School of Medicine's 5 th Annual Research Symposium,
272 2021, Mission, TX. The study was supported by Convocatoria 2021-01: Impulso a la

273 Investigación Científica y de Tecnología Aplicada, COTACyT grant number:
274 COTACYT-2021-01-23. The authors acknowledge the generous support provided by
275 the Universidad Mexico Americana del Norte, the Universidad Autónoma de
276 Tamaulipas for supporting ESFUERSO sharing spaces, personnel, laboratory facilities,
277 and the enthusiastic participation of alumni, staff, and faculty.
278
279

280

281 **References**

282

- 283 1. Kara Z, Akcin R, Demir AN, Dinc HO, Kocazeybek B, Yumuk VD. Antibody
284 Response to Inactive SARS-CoV-2 Vaccination in a Cohort of Elderly Patients Living
285 with Obesity. *Obes Facts*. 2023;16(4):374-80.
- 286 2. Watanabe M, Balena A, Tuccinardi D, Tozzi R, Risi R, Masi D, et al. Central
287 obesity, smoking habit, and hypertension are associated with lower antibody titres in
288 response to COVID-19 mRNA vaccine. *Diabetes Metab Res Rev*. 2022;38(1):e3465.
- 289 3. Watanabe M, Balena A, Masi D, Tozzi R, Risi R, Caputi A, et al. Rapid Weight
290 Loss, Central Obesity Improvement and Blood Glucose Reduction Are Associated with
291 a Stronger Adaptive Immune Response Following COVID-19 mRNA Vaccine.
292 *Vaccines (Basel)*. 2022;10(1).
- 293 4. Kara Z, Akcin R, Demir AN, Dinc HO, Taskin HE, Kocazeybek B, et al.
294 Antibody Response to SARS-CoV-2 Vaccines in People with Severe Obesity. *Obes*
295 *Surg*. 2022;32(9):2987-93.
- 296 5. Fishkin T, Goldberg MD, Frishman WH. Review of the Metabolic Risk Factors
297 for Increased Severity of Coronavirus Disease-2019. *Cardiol Rev*. 2021;29(6):292-5.
- 298 6. Steenblock C, Schwarz PEH, Ludwig B, Linkermann A, Zimmet P, Kulebyakin
299 K, et al. COVID-19 and metabolic disease: mechanisms and clinical management.
300 *Lancet Diabetes Endocrinol*. 2021;9(11):786-98.
- 301 7. Garcia-Oropesa EM, Perales-Torres AL, Martinez-Lopez YE, Munguia-Cisneros
302 CX, Nava-Gonzalez EJ, Perez-Navarro M, et al. Effect of Insulin Resistance on
303 Abdominal Obesity, Liver Fat Infiltration, and Body Mass Index in Youngsters. *Arch*
304 *Med Res*. 2023;54(7):102873.
- 305 8. Barraza-Macias A. El estrés de la pandemia (COVID 19) en población
306 Mexicana.: Centro de Estudios Clínica e Investigacion Psicoanalítica S.C. ; 2020.
- 307 9. Burke JP, Hale DE, Hazuda HP, Stern MP. A quantitative scale of acanthosis
308 nigricans. *Diabetes Care*. 1999;22(10):1655-9.
- 309 10. Ayon-Nunez DA, Cervantes-Torres J, Cabello-Gutierrez C, Rosales-Mendoza S,
310 Rios-Valencia D, Huerta L, et al. An RBD-Based Diagnostic Method Useful for the
311 Surveillance of Protective Immunity against SARS-CoV-2 in the Population.
312 *Diagnostics (Basel)*. 2022;12(7).
- 313 11. Network. E. The Strengthening the Reporting of Observational Studies in
314 Epidemiology (STROBE) Statement: guidelines for reporting observational studies.
315 2023 [updated March 6, 2023. Available from: [https://www.equator-](https://www.equator-network.org/reporting-guidelines/strobe/)
316 [network.org/reporting-guidelines/strobe/](https://www.equator-network.org/reporting-guidelines/strobe/)]. .
- 317 12. Kim D, Memili A, Chen HH, Highland HM, Polikowsky HG, Anwar MY, et al.
318 Sex-specific associations between adipokine profiles and carotid-intima media thickness
319 in the Cameron County Hispanic Cohort (CCHC). *Cardiovasc Diabetol*.
320 2023;22(1):231.
- 321 13. Montes-Herrera D, Munoz-Medina JE, Fernandes-Matano L, Salas-Lais AG,
322 Hernandez-Cueto MLA, Santacruz-Tinoco CE, et al. Association of Obesity with
323 SARS-CoV-2 and Its Relationship with the Humoral Response Prior to Vaccination in
324 the State of Mexico: A Cross-Sectional Study. *Diagnostics (Basel)*. 2023;13(16).

- 325 14. Yamamoto S, Mizoue T, Tanaka A, Oshiro Y, Inamura N, Konishi M, et al. Sex-
326 associated differences between BMI and SARS-CoV-2 antibody titers following the
327 BNT162b2 vaccine. *Obesity (Silver Spring)*. 2022;30(5):999-1003.
- 328 15. Ou X, Jiang J, Lin B, Liu Q, Lin W, Chen G, et al. Antibody responses to
329 COVID-19 vaccination in people with obesity: A systematic review and meta-analysis.
330 *Influenza Other Respir Viruses*. 2023;17(1):e13078.
- 331
- 332

333

334 Figure legends:

335

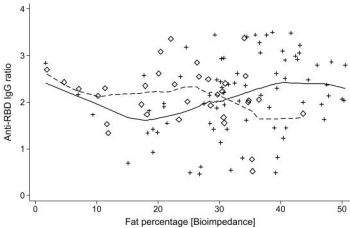
336 Figure 1. Sex differences analyzed with locally weighted regression (lowess)
337 function of neutralizing anti-RBD IgG ratio and body fat percentage in a sample
338 of university students. Females: Diamonds, Males: cross, Lowess females:
339 Continuous line, Lowess males: discontinuous line.

340

341

342 Figure 2. Function of anti-RBD IgG ratio predicted by body fat percentage with a
343 3rd grade polynomial regression model. The function for males can be modeled
344 with a 2nd grade polynomial. Females: White circles, Males: Black circles.

345



Predicted anti-RBD IgG ratio

