

1 **Adiposity and Sex Influence on SARS-CoV-2 Antibody**  
2 **Response in University Students. An ESFUERSO**  
3 **cross-sectional study.**

4  
5 Adriana L. Perales-Torres, PhD, 1,

6 Lucia M. Perez-Navaro, PhD, 2,

7 Esperanza M. Garcia-Oropesa PhD 1,

8 Alvaro Diaz-Badillo, PhD 3,4,

9 Yoscelina Estrella Martinez-Lopez, PhD 5,

10 Marisol Rosas, PhD 1,

11 Octelina Castillo PhD 1,

12 Laura Ramirez-Quintanilla, MSc 1,

13 Jacquelynne Cervantes PhD 6,

14 Edda Sciutto PhD 7,

15 Claudia X. Munguia Cisneros MPH, 8,

16 Carlos Ramirez-Pfeifer PhD 4,10,

17 Leonel Vela MD, MPH 9,

18 Beatriz Tapia, MD EdD, MPH 9,

19 Juan C. Lopez-Alvarenga, MD, PhD 4, 9

20

21 1. Unidad Académica Multidisciplinaria Reynosa Aztlan, Universidad Autónoma de

22 Tamaulipas, Reynosa, Tamaulipas, México.

23 2. Departamento de Nefrología. Hospital General de México Dr. Eduardo Liceaga.

24 Mexico City.

25 3. Public Health Research Group, Department of Life Sciences, Texas A&M

26 University-San Antonio, USA.

27 4. Escuela de Medicina. Universidad México Americana del Norte. Reynosa,

28 Tamaulipas, Mexico.

29 5. School of Public Health, University of Texas Health Science Center at Houston,

30 Brownsville, TX, USA.

31 6. Facultad de Medicina Veterinaria y Zootecnia, Universidad Nacional Autónoma de

32 México. Mexico City.

33 7. Instituto de Investigaciones Biomedicas, Universidad Nacional Autónoma de

34 México, Mexico City.

35 8. Centro Especializado de Diabetes y Metabolismo CEDIAMET. Universidad Mexico

36 Americana del Norte. Reynosa, Tamaulipas, Mexico.

37 9. School of Medicine. University of Texas Rio Grande Valley, UTRGV. Edinburg,

38 Texas, U.S.A.

39

40 Note: Partial results of this study were presented in the UTRGV 2020 Research

41 Symposium won a prize for best oral presentation. Dataset is available at the

42 [https://scholarworks.utrgv.edu/cgi/ir\\_submit.cgi?context=som\\_pub](https://scholarworks.utrgv.edu/cgi/ir_submit.cgi?context=som_pub)

43

44 Dr. Juan Carlos Lopez Alvarenga, MD, PhD

45 University Dr 1201. Edinburg Texas 78539. USA

46 Mail: [juan.lopezalvarenga@utrgve.edu](mailto:juan.lopezalvarenga@utrgve.edu)

47

48

## 49 **Abstract**

50 **Introduction.** Prior studies have identified various determinants of differential immune  
51 responses to COVID-19. This investigation delves into the Ig-G anti-RBD marker,  
52 scrutinizing its potential correlations with sex, vaccine type, body fat percentage,  
53 metabolic risk, perceived stress, and previous COVID-19 exposure.

54 **Methods.** In this study, data were obtained from 116 participants from the ESFUERSO  
55 cohort, who completed questionnaires detailing their COVID-19 experiences and stress  
56 levels assessed through the SISCO scale. Quantification of Ig-G anti-RBD  
57 concentrations was executed using an ELISA assay developed by UNAM. Multiple  
58 regression analysis was adeptly employed to control for covariates, including sex, age,  
59 body fat percentage, BMI, and perceived stress.

60 **Results.** This sample comprised young individuals (average age of 21.4 years),  
61 primarily consisting of females (70%), with a substantial proportion reporting a family  
62 history of diabetes, hypertension, or obesity. Most students had received the Moderna or  
63 Pfizer vaccines, and 91% displayed a positive anti-RBD response.

64 A noteworthy finding was the interaction between body fat percentage and sex. In  
65 males, increased adiposity was associated with a decrease in Ig-G anti-RBD  
66 concentration, while in females, the response increased. Importantly, this trend was  
67 consistent regardless of the vaccine received. No significant associations were observed  
68 for variables such as dietary habits or perceived stress.

69 **Conclusions.** In summation, this research reports the impact of both sex and body fat  
70 percentage on the immune response through Ig-G anti-RBD levels to COVID-19  
71 vaccines. The implications of these findings offers a foundation for educational  
72 initiatives and the formulation of preventive policies aimed at mitigating health  
73 disparities.

## 74 **Introduction**

75 To understand factors that can impact the serum levels of antibodies produced by the  
76 COVID-19 vaccine, many studies have been conducted. Age is a critical factor that  
77 plays a significant role in determining the immune response. Elderly individuals with  
78 obesity and non-prior infection had reduced antibody titers against SARS-CoV-2 spike  
79 antigen after CoronaVac vaccine (manufactured in China) compared to non-obese  
80 people.(1) Lower antibody response, after receiving two doses of the Pfizer vaccine, has  
81 also been linked to central obesity (correlation of  $r = -0.3$ ), presence of hypertension and  
82 smoking habits, with no notable differences by gender.(2)

83 Interestingly, losing weight has been shown to improve the adaptive immune response  
84 particularly an increase in INF- $\gamma$  levels following administration of two doses of  
85 mRNA vaccine.(3)

86 Sex and body weight interaction can also result in varying immune responses. For  
87 individuals with a BMI  $>40$  kg/m<sup>2</sup>, there were no discernible differences in IgG  
88 antibody levels between sexes. In contrast, those with normal weight showed higher  
89 levels among males.(4)

90 The present study focused on a nested sample of students from the ESFUERSO  
91 program, which recruited first-year college students living in Reynosa prior the  
92 COVID-19 pandemic in 2018. This group of students reported a significant family  
93 history of type 2 diabetes (T2D) with 25% having family history of the condition, and  
94 39% having family history of hypertension. Interestingly, between 17 to 47% students  
95 were unsure whether their first-degree relatives suffered from T2D, hypertension, or  
96 other obesity-related metabolic issues, as documented in the ESFUERSO study.

97 These young students experienced impact from the COVID-19 pandemic, forcing them  
98 to home confinement, which led to changes in their food intake, physical activity, and

99 increased psychological stress. Vaccination efforts began in 2021, employing novel  
100 mRNA vaccine used in veterinary science for three decades.  
101 During the pandemic, it was evident that metabolic imbalances associated with obesity  
102 could increase the severity of COVID-19 and the risk of mortality.(5, 6) The aim of this  
103 study was to analyze the immune response to the receptor-binding domain (RBD), a  
104 protective epitope found in the S protein, using Ig-G response among young students  
105 from Mexico, living near the US-Mexico border. The study provides insights in the  
106 immune response and the potential implications in the context of COVID-19.

107

108

## 109 **Methods**

### 110 **Study Sample**

111 In 2018, the ESFUERSO (Estudio en la Frontera Urbana para las Enfermedades y  
112 Factores Asociados a la Obesidad) cohort study was launched, with its focus on first-  
113 year students from two universities in Reynosa, Tamaulipas. Initially, the parental  
114 sample included 500 students. However, due to the pandemic, a subset of 116 students  
115 was contacted between September 1<sup>st</sup> and October 31<sup>st</sup>, 2021. During this period, we  
116 obtained signed informed consent (see Ethics Statement below for details), conducted  
117 questionnaire surveys, collected anthropometric measurements, and collected blood  
118 samples from 108 students.

119

## 120 **Measures**

121 The questionnaires and methods used in the ESFUERSO study have been described  
122 elsewhere.(7) Briefly, the questionnaires collected information on family metabolic risk,  
123 anxiety, depression and uncertainty. The Cronbach  $\alpha$  coefficient from each question  
124 ranged from 0.72–0.96. The test-retest for agreement in categorical variables was a  
125 kappa coefficient between 0.5–0.91 and an intraclass correlation coefficient between  
126 0.73–0.96 in continuous variables. The stress during the pandemic was evaluated with  
127 the Coping Inventory for Stressful Situations (SISCO), composed of five stressors, five  
128 symptoms and five coping strategies. The SISCO had a Cronbach  $\alpha$  coefficient of 0.9  
129 with high homogeneity and was validated in Mexico and other Latin American  
130 countries.(8) All the questionnaires were administered electronically, with students  
131 completing them on their own cellphones. This approach ensured efficient data  
132 collection and minimized the need for physical paperwork or in-person administration.  
133 Weight, height, acanthosis nigricans grade(9) were assessed and registered at the  
134 universities by standardized nutritionist.(7) Blood samples were obtained after an  
135 overnight fasting period for the measurement of serum concentration of Ig-G anti-RBD  
136 by indirect ELISA.(10) Following collections, the samples underwent centrifugation,  
137 and four aliquots were stored at -20 C. These aliquots were subsequent transported to  
138 Mexico City in November 2021 for antibody analysis. The assessment of the effective  
139 neutralizing concentration of anti-RBD IgG was carried out, and this variable was  
140 analyzed in both continuous and dichotomous dimensions. A threshold of 1.0 for anti-  
141 RBD IgG ratio was established to differentiate between effective and non-effective  
142 neutralization.

143

## 144 **Ethics Statement**

145 The protocol and informed consent were approved by the Comité de Ética Institucional  
146 de la Unidad Académica Multidisciplinaria Reynosa-Aztlán (CEI-UAMRA) number  
147 registration CEI-UAMRA 005/2019/CEI under Health normativity (NOM-012-SSA-3-  
148 212). All participants signed the approved informed consent. The present report  
149 followed the STROBE recommendations for cross-sectional studies.(11)  
150

## 151 **Statistical analysis**

152 Descriptive statistics with percentage for counts variables, mean and standard deviation  
153 for continuous variables. Inferential statistics with regressions was used for the SISCO  
154 questionnaire for anxiety, uncertainty, sadness, lack of sleep was contrasted by the  
155 presence of metabolic risk. Locally weighted regression (lowess) was performed to  
156 analyze nonlinear functions. We used the antibody concentration as dependent variable  
157 adjusted for sex, age, metabolic risk, body fat percentage and BMI. Multiplicative  
158 interactions for covariates were analyzed. Variance inflation factors (VIF) was  
159 calculated to evaluate multicollinearity for lineal models without interactions. The  
160 models were evaluated using first to third grades polynomial multiple regression and  
161 goodness of fit with mean squared error calculation. The best goodness of fit for data  
162 was polynomial multiple regression with 114 students with all complete data. All  
163 analyses were performed with Stata V18.0 (StataCorp, College Station, TX).  
164

## 165 **Results**

166 A total of 108 students in the ESFUERSO cohort were enrolled during the 3rd year of  
167 the cohort follow-up in Reynosa. The participants had mean age of 21.4 (SD 1.0) years,  
168 average BMI of 27.9 (SD 6.2), and gender distribution of 69% (75 out of 108) females.  
169 A significant family risk of T2D, hypertension, presence of obesity, or a combination of  
170 these conditions was identified in 70% of the students. Notably, there were no  
171 discernible differences by universities on metabolic risk, anthropometry, sex, and  
172 commercial brand of vaccine or presence of adequate antibody levels. Only 3 (3%)  
173 students from the private university had no COVID-19 vaccination at the time of the  
174 study and they also belonged to the metabolic risk group (Pearson standardized distance  
175 >3.0). From vaccinated students 97 (90%) were vaccinated with Moderna or Pfizer and  
176 only 8 (7%) with other vaccines (Johnson & Johnson n=1, Cansino n=6, Sinovac n=1).  
177 The prevalence of positive anti-RBD was 91%.  
178

Variable	Females (n= 75)	Males (n= 33)
Continuous variables [Average (SD)]		
Age (years)	21.4 (1.1)	21.4 (0.9)
BMI (kg/m <sup>2</sup> )	27.7 (6.1)	28.4 (6.3)
Body fat (%)	33.04 (10.45)	24.2 (10.34)
Waist circumference (cm)	83.3 (13.2)	91.9 (13.7)
Neck circumference (cm)	34.4 (3.2)	40.4 (10.6)
Systolic blood pressure (mmHg)	113 (9)	120.8 (18.7)
Diastolic blood pressure (mmHg)	77 (7)	81.1 (92.9)
Ordinal variables [median (Q1, Q3)]		



Anguish	3 (2, 5)	3 (1, 4)
Uncertainty	3 (2, 4)	2 (1, 4)
Lack of sleep	4 (2, 5)	2 (1, 3)
Sadness	3 (3, 5)	2 (1, 3.5)
Anxiety	4 (3, 5)	3 (1.5, 4)
Acanthosis nigricans	0 (0, 2)	1 (0, 2)

179 **Table 1.** Descriptive Statistics of General Variables by Sex. Continuous variables are  
180 presented as mean and standard deviation. Ordinal variables, such as the perceived  
181 stress items of the SISCO questionnaire, are described using a 6-point Likert scale (0 =  
182 none, 5 = highest score). Acanthosis nigricans is described by its median and  
183 interquartile range (Q1, Q3).

184

185 The multicollinearity analysis showed BMI and fat percentage had VIF= 4.8 and  
186  $1/VIF= 0.02$ , most models were analyzed separating both variables. The body fat  
187 percentage interaction with sex was statistically significant, explaining why the serum  
188 concentration of anti-RBD decreased as adiposity increased in men ( $p=0.034$  for second  
189 grade term), but Ab-RBD increased with increased adiposity in women ( $p=0.01$ ,  
190  $p=0.015$  for second and third grade terms) (Figure 1). The interaction remained in spite  
191 of the type of vaccine. The adjusted model minimized the mean squared error (0.51 and  
192  $R^2= 0.14$ ), compared with other models (MSE between 0.54 to 0.56, and  $R^2$  between  
193 0.04 and 0.07) (Figure 2). The residuals adjusted a normal distribution (Shapiro-Wilkins  
194  $p=0.136$ ).

195 No differences due to metabolic risk factors or effective antibody concentration were  
196 found, for food consumption, distress, and uncertainty, lack of sleep, sadness, and  
197 anxiety.

198

199 **Figure 1.** Sex Differences Analyzed with Locally Weighted Regression (Lowess)

200 Function. This figure displays the relationship between neutralizing anti-RBD IgG ratio  
201 and body fat percentage in a sample of university students. Females are represented by  
202 diamonds, and males by crosses. The Lowess curve for females is shown as a  
203 continuous line, while for males, it is depicted as a discontinuous line.

204

205 **Figure 2.** Adjusted Function of Anti-RBD IgG Ratio Predicted by Body Fat Percentage.

206 This figure illustrates the relationship between anti-RBD IgG ratio and body fat  
207 percentage using a 3rd-grade polynomial regression model. For males, a 2nd-grade  
208 polynomial is sufficient. Females are represented by white circles, and males by black  
209 circles.

210

## 211 **Discussion**

212 Based on the results of our study, it appears that the neutralizing anti-RBD response to  
213 the COVID-19 vaccine is influenced by a multiplicative interaction of sex and body fat  
214 percentage. Specifically, females tend to have increased responses while males tend to  
215 have decreased responses (Figure 2). Stress scores do not appear to have significant  
216 effects.

217 This observation aligns with existing research on sex-based differences in immune  
218 responses. For instance, a study involving the Cameron County Hispanic Cohort, which  
219 included 624 participants with a mean age of 50 (SD 14) years, has previously reported  
220 sex-specific variations in adipokines and carotid intima media thickness.(12) The  
221 present study extends these findings to a younger cohort, specifically individuals in the  
222 final stages of adolescence residing near the U.S.-Mexico border. This highlights the

223 relevance of considering age and geographic location when examining immune  
224 response differences between sexes.

225 Additionally, another study conducted in Mexico on 980 adult participants with a  
226 median age of 50 (Q1: 36, Q3: 54) who had obesity before mass vaccination sheds light  
227 on this matter. (13) The authors identified independent factors associated with SARS-  
228 Cov-2 infection in a symptomatic group. Their findings revealed higher levels of anti-  
229 S1/2 antibodies in individuals with conditions like advanced age, type 2 diabetes,  
230 hypertension, and a positive correlation with body mass index (BMI). Furthermore,  
231 women exhibited higher levels of anti-RBD IgG antibodies compared to men. This  
232 study highlighted the heightened vulnerability of individuals with underlying health  
233 conditions or obesity to SARS-CoV-2 infection. In contrast, the ESFUERSO cohort  
234 focused on a younger population who received vaccinations, providing valuable insights  
235 into this demographic group.

236 Other populations have reported similar findings. Yamamoto et al.(14), reported sex-  
237 associated differences in the relationship between body mass index and SARS-CoV-2  
238 antibody titers following the BNT162b2 vaccine in a study of 2,435 healthcare workers  
239 in Japan. Additionally, a meta-analysis examining antibody responses to COVID-19  
240 vaccinations also indicated a significant association between obesity and reduced  
241 antibody response. (15) Nevertheless, the considerable heterogeneity (88%) observed  
242 across studies suggests that biological factors, including sex, age, and body fat play a  
243 pivotal role in this outcomes.

244 Tailoring vaccination plans based on an individual's characteristics may enhance  
245 vaccine effectiveness. Addressing gender-specific and body fat-related factors in public  
246 health interventions have the potential to reduce infection rates. Using the provided  
247 information in this study can help in programs to educate individuals about their

248 susceptibility to infections considering the social determinants in the U.S.-Mexico  
249 border region.

## 250 **Limitations**

251 While the present study yields valuable insights, it is important to acknowledge several  
252 potential limitations. Variations in immune responses across different age groups, the  
253 influence of genetic factors, and the impact of social determinants can introduce  
254 complexities that our study may not fully capture. Moreover, it's essential to recognize  
255 that the study's cross-sectional design allows identifying associations but does not  
256 establish causality. These considerations emphasize the need for caution in generalizing  
257 the findings and highlight avenues for further research.

258 In summary, this study provides novel insights into the response of anti-RBD IgG  
259 antibodies to vaccination in a young cohort. The findings reveal a complex relationship  
260 between sex and body fat percentage, depicted by a third-degree polynomial curve  
261 (Figure 2). This emphasizes the intricate interplay between body fat and the immune  
262 response to vaccines and accentuates the importance of considering sex-specific factors,  
263 especially among younger individuals. Comprehensive knowledge of distinct  
264 characteristics and immunological responses, help to understand social and biological  
265 dynamics for tailoring vaccination strategies, optimizing public health interventions and  
266 reducing health disparities

267

268

## 269 **Acknowledgments**

270 Preliminary results of this study were presented and recognized as the best oral clinical  
271 presentation at the UTRGV School of Medicine's 5 th Annual Research Symposium,  
272 2021, Mission, TX. The study was supported by Convocatoria 2021-01: Impulso a la

273 Investigación Científica y de Tecnología Aplicada, COTACyT grant number:  
274 COTACYT-2021-01-23. The authors acknowledge the generous support provided by  
275 the Universidad Mexico Americana del Norte, the Universidad Autónoma de  
276 Tamaulipas for supporting ESFUERSO sharing spaces, personnel, laboratory facilities,  
277 and the enthusiastic participation of alumni, staff, and faculty.  
278  
279

280

## 281 **References**

282

- 283 1. Kara Z, Akcin R, Demir AN, Dinc HO, Kocazeybek B, Yumuk VD. Antibody  
284 Response to Inactive SARS-CoV-2 Vaccination in a Cohort of Elderly Patients Living  
285 with Obesity. *Obes Facts*. 2023;16(4):374-80.
- 286 2. Watanabe M, Balena A, Tuccinardi D, Tozzi R, Risi R, Masi D, et al. Central  
287 obesity, smoking habit, and hypertension are associated with lower antibody titres in  
288 response to COVID-19 mRNA vaccine. *Diabetes Metab Res Rev*. 2022;38(1):e3465.
- 289 3. Watanabe M, Balena A, Masi D, Tozzi R, Risi R, Caputi A, et al. Rapid Weight  
290 Loss, Central Obesity Improvement and Blood Glucose Reduction Are Associated with  
291 a Stronger Adaptive Immune Response Following COVID-19 mRNA Vaccine.  
292 *Vaccines (Basel)*. 2022;10(1).
- 293 4. Kara Z, Akcin R, Demir AN, Dinc HO, Taskin HE, Kocazeybek B, et al.  
294 Antibody Response to SARS-CoV-2 Vaccines in People with Severe Obesity. *Obes*  
295 *Surg*. 2022;32(9):2987-93.
- 296 5. Fishkin T, Goldberg MD, Frishman WH. Review of the Metabolic Risk Factors  
297 for Increased Severity of Coronavirus Disease-2019. *Cardiol Rev*. 2021;29(6):292-5.
- 298 6. Steenblock C, Schwarz PEH, Ludwig B, Linkermann A, Zimmet P, Kulebyakin  
299 K, et al. COVID-19 and metabolic disease: mechanisms and clinical management.  
300 *Lancet Diabetes Endocrinol*. 2021;9(11):786-98.
- 301 7. Garcia-Oropesa EM, Perales-Torres AL, Martinez-Lopez YE, Munguia-Cisneros  
302 CX, Nava-Gonzalez EJ, Perez-Navarro M, et al. Effect of Insulin Resistance on  
303 Abdominal Obesity, Liver Fat Infiltration, and Body Mass Index in Youngsters. *Arch*  
304 *Med Res*. 2023;54(7):102873.
- 305 8. Barraza-Macias A. El estrés de la pandemia (COVID 19) en población  
306 Mexicana.: Centro de Estudios Clínica e Investigacion Psicoanalítica S.C. ; 2020.
- 307 9. Burke JP, Hale DE, Hazuda HP, Stern MP. A quantitative scale of acanthosis  
308 nigricans. *Diabetes Care*. 1999;22(10):1655-9.
- 309 10. Ayon-Nunez DA, Cervantes-Torres J, Cabello-Gutierrez C, Rosales-Mendoza S,  
310 Rios-Valencia D, Huerta L, et al. An RBD-Based Diagnostic Method Useful for the  
311 Surveillance of Protective Immunity against SARS-CoV-2 in the Population.  
312 *Diagnostics (Basel)*. 2022;12(7).
- 313 11. Network. E. The Strengthening the Reporting of Observational Studies in  
314 Epidemiology (STROBE) Statement: guidelines for reporting observational studies.  
315 2023 [updated March 6, 2023. Available from: [https://www.equator-](https://www.equator-network.org/reporting-guidelines/strobe/)  
316 [network.org/reporting-guidelines/strobe/](https://www.equator-network.org/reporting-guidelines/strobe/)]. .
- 317 12. Kim D, Memili A, Chen HH, Highland HM, Polikowsky HG, Anwar MY, et al.  
318 Sex-specific associations between adipokine profiles and carotid-intima media thickness  
319 in the Cameron County Hispanic Cohort (CCHC). *Cardiovasc Diabetol*.  
320 2023;22(1):231.
- 321 13. Montes-Herrera D, Munoz-Medina JE, Fernandes-Matano L, Salas-Lais AG,  
322 Hernandez-Cueto MLA, Santacruz-Tinoco CE, et al. Association of Obesity with  
323 SARS-CoV-2 and Its Relationship with the Humoral Response Prior to Vaccination in  
324 the State of Mexico: A Cross-Sectional Study. *Diagnostics (Basel)*. 2023;13(16).

- 325 14. Yamamoto S, Mizoue T, Tanaka A, Oshiro Y, Inamura N, Konishi M, et al. Sex-  
326 associated differences between BMI and SARS-CoV-2 antibody titers following the  
327 BNT162b2 vaccine. *Obesity (Silver Spring)*. 2022;30(5):999-1003.
- 328 15. Ou X, Jiang J, Lin B, Liu Q, Lin W, Chen G, et al. Antibody responses to  
329 COVID-19 vaccination in people with obesity: A systematic review and meta-analysis.  
330 *Influenza Other Respir Viruses*. 2023;17(1):e13078.
- 331
- 332

333

334 Figure legends:

335

336 Figure 1. Sex differences analyzed with locally weighted regression (lowess)  
337 function of neutralizing anti-RBD IgG ratio and body fat percentage in a sample  
338 of university students. Females: Diamonds, Males: cross, Lowess females:  
339 Continuous line, Lowess males: discontinuous line.

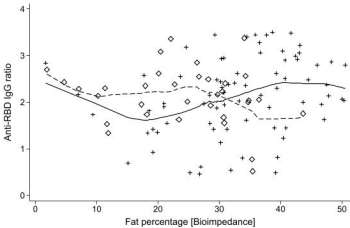
340

341

342 Figure 2. Function of anti-RBD IgG ratio predicted by body fat percentage with a  
343 3<sup>rd</sup> grade polynomial regression model. The function for males can be modeled  
344 with a 2<sup>nd</sup> grade polynomial. Females: White circles, Males: Black circles.

345





Predicted anti-RBD IgG ratio

