

1 **Integration of pharmacists' knowledge into a predictive model for teicoplanin dose**
2 **planning**

3
4 Tetsuo Matsuzaki^a, Tsuyoshi Nakai^{a,b}, Yoshiaki Kato^a, Kiyofumi Yamada^a, and Tetsuya
5 Yagi^{c,*}

6
7 *^aHospital Pharmacy, Nagoya University Hospital, Nagoya, Aichi, 466-8560, Japan*

8 *^bDepartment of Pharmacotherapeutics and Informatics, Fujita Health University School of*
9 *Medicine, Toyoake, 470-1192, Japan*

10 *^cDepartment of Infectious Diseases, Nagoya University Hospital, Nagoya, Aichi, 466-8560,*
11 *Japan*

12
13 Running title: A predictive model for teicoplanin dosing

14
15 *Corresponding author: Tetsuya Yagi

16 *Department of Infectious Diseases, Nagoya University Hospital, Nagoya, Aichi, 466-8560,*
17 *Japan*

18

19 E-mail: tyagi@med.nagoya-u.ac.jp

20 Phone: +81-52-744-2955

21 Fax: +81-52-744-2801

22

23 Word count for the abstract: 250 words

24 Word count for the text: 3332 words

25

26 **Abstract**

27

28 Teicoplanin is an important antimicrobial agent for methicillin-resistant *Staphylococcus*
29 *aureus* infections. To enhance its clinical effectiveness while preventing adverse effects,
30 therapeutic drug monitoring (TDM) of teicoplanin trough concentration is recommended.

31 Given the importance of the early achievement of therapeutic concentrations for treatment
32 success, initial dosing regimens are deliberately designed based on patient information.

33 Considerable effort has been dedicated to developing an optimal initial dose plan for
34 specific populations; however, comprehensive strategies for tailoring teicoplanin dosing
35 have not been successfully implemented. The initial dose planning of teicoplanin is
36 conducted at the clinician's discretion and is thus strongly dependent on the clinician's
37 experience and expertise.

38 The present study aimed to use a machine learning (ML) approach to integrate clinicians'
39 knowledge into a predictive model for initial teicoplanin dose planning. We first confirmed
40 that dose planning by pharmacists dedicated to TDM (hereafter TDM pharmacists)
41 significantly improved early therapeutic target attainment for patients without an intensive
42 care unit or high care unit stay, providing the first evidence that dose planning of

43 teicoplanin by experienced clinicians enhances early teicoplanin therapeutic exposure. Next,
44 we used a dataset of teicoplanin initial dose planning by TDM pharmacists to train and
45 implement the model, yielding a model that emulated TDM pharmacists' decision-making
46 for dosing. We further applied ML to cases without TDM pharmacist dose planning and
47 found that the target attainment rate of the initial teicoplanin concentration markedly
48 increased. Our study opens a new avenue for tailoring the initial dosing regimens of
49 teicoplanin using a TDM pharmacist-trained ML system.

50

51 **Keywords:** Machine learning (ML), Teicoplanin, Initial dosing regimen, TDM

52

53 **Importance**

54 Teicoplanin is used for treating methicillin-resistant *Staphylococcus aureus* infections.

55 Given the importance of early adequate teicoplanin exposure, initial dosing regimens are

56 adjusted for patient characteristics. However, tailoring teicoplanin dosing is challenging for

57 most clinicians. In this study, we first showed that initial dosing regimens by pharmacists

58 dedicated to therapeutic drug monitoring significantly improved early achievement of

59 targeted concentration. In addition, we leveraged machine learning approach to develop the

60 predictive model that tailors initial dosing regimens at the levels of experienced

61 pharmacists. The target attainment rate of patients without experienced pharmacists' dose

62 planning was significantly increased by applying the model. Therefore, machine learning

63 approach may provide new avenues for tailoring initial teicoplanin dosing.

64

65 1. Introduction

66

67 Teicoplanin is a glycopeptide antibiotic with clinical efficacy in the treatment of
68 methicillin-resistant *Staphylococcus aureus* (MRSA) infections, along with vancomycin (1,
69 2). With a growing body of evidence supporting the relationship between teicoplanin
70 exposure and response, therapeutic drug monitoring (TDM) is routinely used to maximize
71 clinical effectiveness while preventing adverse effects, such as nephrotoxicity and
72 thrombocytopenia (3, 4). Trough concentration of teicoplanin is considered a key predictor
73 of its effectiveness and adverse effects: trough levels of 15–30 mg/L are recommended for
74 the treatment of noncomplicated MRSA infections, whereas trough levels of 20–40 mg/L
75 have been recently suggested for serious and/or complicated MRSA infections, such as
76 endocarditis and osteomyelitis (2).

77 Initial teicoplanin dosing starts with multiple loading doses (three to four times, in general),
78 followed by a series of maintenance doses (2, 5, 6). Loading and maintenance doses are
79 adjusted for patient characteristics, such as age, sex, body weight (BW), body mass index
80 (BMI), serum albumin level, and renal function. Given the importance of the early
81 achievement of therapeutic exposure for clinical success, numerous efforts have been made

82 to implement initial dosing nomograms to achieve early attainment of therapeutic
83 concentration levels (5–7). However, because these nomograms were developed and
84 validated for a specific population, their robustness against population changes is limited.
85 To date, the dosing nomograms for individually optimized initial dosing remain
86 controversial, which poses a challenge for the initial dose planning of teicoplanin. In
87 clinical settings, decision-making for initial teicoplanin dosing regimens is often based on
88 the clinician’s experience and expertise (hereafter knowledge) (8–10).

89 Machine learning (ML), a type of artificial intelligence, provides a set of tools that improve
90 the discovery and decision-making for specific questions with abundant and
91 multidimensional data. A growing body of evidence suggests that ML is a promising
92 approach for medical research and clinical care (11, 12). Recently, ML approaches have
93 been adopted to facilitate TDM studies. Imai et al. developed a nomogram for an initial
94 vancomycin dosing regimen by integrating a dataset of patients treated with vancomycin
95 into ML (13, 14). We previously adopted imitation learning, which is an ML technique that
96 leverages expert demonstrations to learn policies (15). In this study, we defined experts as
97 pharmacists who were experienced in TDM practice and used the dataset of the initial
98 dosing regimen designed by experts to integrate experts’ knowledge into the ML model

99 (16). This straightforward approach has yielded a predictive model that designs initial
100 dosing regimens akin to those of pharmacists, exemplifying the potential of ML techniques
101 for integrating expert knowledge into the model.

102 In the present study, we aimed to extend this approach to teicoplanin. Using a dataset of
103 dose planning by pharmacists dedicated to TDM practice (hereafter TDM pharmacist), we
104 trained ML to predict the TDM pharmacists' initial dose planning of teicoplanin. This
105 approach achieved a predictive model that was comparable to that of TDM pharmacists for
106 target trough attainment. In addition, the target attainment rate of patients without TDM
107 pharmacists' dose planning would significantly increase by applying ML. Our study
108 highlights the clinical significance of integrating pharmacist knowledge into predictive
109 models using ML techniques.

110

111 **2. Results**

112

113 **2.1 Patients' characteristics**

114 We enrolled patients who received teicoplanin between August 2019 and April 2022 at
115 Nagoya University Hospital. During the study period, 1165 patients received teicoplanin
116 treatment. Of these, 751 patients were excluded because of the following reasons: age <18
117 years (n = 546), undergoing peritoneal dialysis or hemodialysis (n = 109), receiving TDM
118 pharmacists' intervention after the initial dose (n = 33), resuming teicoplanin treatment
119 within 7 days (n = 31), on extracorporeal membrane oxygenation (ECMO) (n = 16),
120 missing data (n = 9), patient immobility (n = 6), or receiving a single dose for surgical
121 prophylaxis (n = 1). The remaining 414 patients were divided into two groups based on
122 whether they received TDM pharmacist intervention (intervention group) or not
123 (nonintervention group). Consequently, 158 and 256 patients were assigned to the
124 intervention and nonintervention groups, respectively (Figure 1 and Tables S1 and S2).

125

126 **2.2 Evaluation of therapeutic drug monitoring pharmacists' dose planning**

127 We first evaluated the clinical significance of TDM pharmacists' intervention in teicoplanin

128 treatment. Eighteen of the 158 patients in the intervention group and 37 of the 256 patients
129 in the nonintervention group were excluded from the analysis because of the lack of
130 concentration measurement or description of the sampling time. For the remaining 140
131 patients in the intervention group, we further excluded the patients with deviation from the
132 TDM pharmacists' regimen (n = 17), changing regimen after the initial dose (n = 1), and
133 blood sampling after the completion of therapy (n = 1).

134 For the remaining 121 and 219 patients in the intervention and nonintervention groups,
135 respectively, we assessed whether blood samples were collected at appropriate time points,
136 that is, 18 h after the last dose (2). The incidence rates of inappropriate blood sampling
137 were 5.0% (6/121) and 16.8% (36/219) in the intervention and nonintervention groups,
138 respectively, indicating the contribution of TDM pharmacists' intervention to proper trough
139 blood sampling (Figure 1 and Table 1). Patients with inappropriate blood sampling in the
140 intervention group (n = 6) were due to the lack of TDM pharmacists' recommendation on
141 the timing for sampling.

142 Next, we excluded these patients with inappropriate blood sampling and then analyzed
143 whether TDM pharmacists' dose planning contributes to target attainment (15–30 mg/L).
144 As shown in Table 2, TDM pharmacist intervention clearly increased the target attainment

145 rate at initial TDM (74.8% [86/115] in the intervention group vs. 57.9% [106/183] in the
146 nonintervention group, $p = 0.004$), accompanied by a decrease in subtherapeutic ranges
147 (14.8% [17/115] in the intervention group vs. 37.2% [68/183] in the nonintervention group,
148 Table 2 and Tables S3 and S4). However, we observed a large bias in intensive care unit
149 (ICU) and high care unit (HCU) admissions between the two groups (24.3% [28/115] in the
150 intervention group vs. 55.7% [102/183] in the nonintervention group, $p < 1.0 \times 10^{-6}$, Table
151 S5). Thus, we performed subgroup analyses and found no significant increase in target
152 attainment in patients with an ICU/HCU stay (60.7% [17/28] in the intervention group vs.
153 57.8% [59/102] in the nonintervention group, $p = 0.832$, Table 2). This reflects the
154 difficulty in predicting the pharmacokinetics of ICU/HCU stay, where frequent and
155 dramatic changes in the patients' clinical status are often observed. For patients without an
156 ICU/HCU stay, we found a marked increase in the target attainment rate in the intervention
157 group (79.3% [69/87] in the intervention group vs. 58.0% [47/81] in the nonintervention
158 group, $p = 0.004$, Table 2). Because there were systemic differences in baseline
159 characteristics between the two groups, especially creatinine clearance (CL_{CR}) ($p = 0.009$,
160 Figure S1 and Table 3), we applied propensity score matching to reduce the effects of
161 confounding. The results showed that the increase was also found and remained significant

162 after propensity score matching (83.3% [40/48] in the intervention group vs. 60.4% [29/48]
163 in the nonintervention group, $p = 0.013$, Table 4 and Table S6).

164 Overall, these results validate the TDM pharmacists' dose planning, at least for patients
165 without ICU/HCU stay, and underscore the importance of experts' (e.g., TDM pharmacists)
166 intervention for effective and appropriate initial treatment with teicoplanin.

167

168 **2.3 Machine learning (ML) model to determine teicoplanin initial dose**

169 Given the increased target achievement by TDM pharmacists' dose planning of teicoplanin
170 for patients without an ICU/HCU stay, we next sought to build an ML model that tailored
171 dosing regimens at the levels of TDM pharmacists. Toward this end, we trained a two-layer
172 neural network with the dataset of TDM pharmacists' dose planning ($n = 118$, Figure S2
173 and Table S7). Input variables were selected based on the considered information while
174 dose planning: the covariates for teicoplanin pharmacokinetics (age, BW, BMI, CL_{CR} , and
175 serum albumin level) and the timing of dose planning (day of the week [T1–T7] and time of
176 the day [T0]). The latter comes from our practice of adjusting the dosing regimen, such that
177 the initial TDM is performed on weekdays.

178 We divided eligible patients into a training group and a testing group at a 94:24 ratio

179 (approximately 80:20). Subsequently, the neural network model to predict TDM
180 pharmacists' dose planning was trained on the patients in the training group. The prediction
181 accuracies for the loading and maintenance doses (i.e., identical dosing as TDM
182 pharmacists) were both 100% on the training dataset, indicating that the model learned how
183 TDM pharmacists decide dosing regimens. However, in the testing trial, the model scored
184 significantly lower prediction accuracies of 54.2% and 62.5% for the loading and
185 maintenance doses, respectively (Figure 2A, B, left and Table S9). These results indicate
186 that overfitting occurs, which is most likely attributable to the small datasets (17). Because
187 the current dataset consisted of dose planning by multiple pharmacists, each with varying
188 levels of expertise, possible heterogeneity in dose planning among pharmacists may also
189 have contributed to the decrease in accuracy. Next, we retrospectively analyzed the target
190 attainment by ML dose planning using the Bayesian method (2). The original target
191 attainment rate in the testing group was 81.0% (17/21). Importantly, the rate was expected
192 to slightly increase when ML was applied (95.3% [20/21], Figure 2C, left and Table 5). We
193 hypothesized that ML complemented the weaknesses of suboptimal TDM pharmacists by
194 learning policies from other pharmacists. Taken together, these results indicate that
195 although dose planning tends to differ from that of TDM pharmacists, ML is competent for

196 tailoring teicoplanin dosing as TDM pharmacists.

197 As a control, we also trained the ML using dose planning by non-TDM pharmacists (i.e.,
198 the cases without intervention, Table S8) and then analyzed the target attainment by this
199 ML. As expected from the poor target achievement (Table 2), ML trained on cases without
200 intervention failed to maintain the target attainment of TDM pharmacists. The target
201 attainment was estimated to decrease from 81.0% (17/21) to 52.4% (11/21) (Figure 2C,
202 right, Table 5, and Tables S9 and S10). This decrease was attributed to the subtherapeutic
203 doses of teicoplanin; the incidence of subtherapeutic exposure was estimated to increase
204 from 4.8% (1/21) to 47.6% (10/21) (Figure 2B, right, Table 5, and Tables S9 and S10). This
205 result mirrors the propensity of non-TDM pharmacists to underdose (Tables 2 and 4).

206 Taken together, these results suggest that ML model training with the TDM pharmacists'
207 dataset augments model performance in tailoring the teicoplanin dose.

208

209 **2.4 Evaluation of the ML on the external validation dataset**

210 Finally, we investigated whether ML improved target trough attainment. Toward this end,
211 we retrained the ML with whole dataset of TDM pharmacists' dose planning (n = 118,
212 Table S7) to improve the prediction. Subsequently, we applied retrained ML to patients in

213 the nonintervention group without an ICU/HCU stay who underwent TDM (n = 81, Figure
214 1 and Table S8). For both loading and maintenance doses, the retrained ML scored 100%
215 accuracy on the training dataset (Figure S3). We also calculated feature importance, which
216 is proportional to the contribution of the features to the ML decision. For the loading dose,
217 BW was the most important feature for the ML output (i.e., dose determination). For the
218 maintenance dose, BW, BMI, and CL_{CR} represented major contributions to the ML output.
219 For both loading and maintenance doses, the timing of dose planning (T0–T7) also
220 contributed to the ML decision, which is reminiscent of our practice of adjusting dose
221 planning to perform TDM on weekdays (Figure 3A). The small roles of T6 and T7 (dose
222 planning on Saturday and Sunday, respectively) in dose planning were likely due to the lack
223 of data (both n = 1) to optimize the weight parameters (Table S7).

224 The target attainment rate in the nonintervention group was 58.0% (47/81) (Table 2).
225 Notably, if ML dosing regimens were applied, target attainment rates increased from 58.0%
226 to 72.8% (59/81, p = 0.047, Figure 3B and Table 6). This increase was mainly attributed to
227 the enhanced dose regimen, which prevented subtherapeutic drug exposure; when applying
228 the ML, subtherapeutic levels at initial TDM were expected to decrease from 37.0%
229 (30/81) to 22.2% (18/81) (Figure 3C and Table 6). Meanwhile, notably, enhanced dose

230 planning by ML was accompanied by an incidence of overexposure (e.g., case no. 182,
231 Tables S11 and S12). Therefore, ML may increase the risk of adverse effects of teicoplanin,
232 such as thrombocytopenia, which is observed when trough concentrations exceed 40 mg/L
233 (2, 18, 19).

234 Altogether, similar to the dose planning by the TDM pharmacists, the current ML is
235 expected to play a role in tailoring dose planning, which contributes to early therapeutic
236 exposure and consequently leads to treatment success. The model shown in Figure 3 is
237 freely available at https://github.com/Matsuzaki-T/TEIC_study.git.

238

239 **3. Discussion**

240

241 A growing body of evidence has suggested that pharmacists' intervention in initial dose
242 planning leads to early adequate drug exposure, indicating the importance of pharmacists'
243 knowledge for tailoring initial dose planning (20, 21). Given the importance of pharmacists'
244 knowledge, we harnessed the power of ML techniques to integrate such knowledge into a
245 predictive model. To validate this hitherto unexplored approach to expedite clinical
246 decisions during the dose planning phase, we previously trained the ML model for
247 vancomycin dose planning using a dataset of dose planning by pharmacists experienced in
248 TDM. The results showed that the target attainment with the dosing regimen by the
249 resultant ML was estimated to be the same as the pharmacists' regimen, indicating that the
250 ML was as competent in tailoring dose planning as well-trained pharmacists (16). This
251 result motivated us to develop a predictive model for another clinically important antibiotic,
252 teicoplanin, which is equally effective but better tolerated than vancomycin, with a lower
253 risk of nephrotoxicity (22, 23).

254 In this study, we first validated the dose planning for teicoplanin by TDM pharmacists in
255 our hospital (Tables 1, 2, and 4). Compared with vancomycin, evidence that pharmacists'

256 intervention improves clinical outcomes of teicoplanin treatment is limited. One study
257 demonstrated that pharmacists' intervention improved the attainment of targeted teicoplanin
258 concentrations (24). However, in this study, target achievement was recorded whenever
259 concentrations reached the therapeutic window during treatment. Therefore, whether
260 pharmacists intervention improved early target attainment was unclear. Although the
261 increase in target attainment rate was limited to patients without an ICU/HCU stay, the
262 current study marks the first time that dose planning of teicoplanin by experienced
263 pharmacists led to the achievement of therapeutic windows accompanied by increased
264 adherence to appropriate blood sampling (Tables 1 and 2). These results, along with similar
265 outcomes reported for vancomycin (20, 21), indicate the clinical significance of
266 pharmacists' (especially pharmacists experienced in TDM) intervention in the treatment of
267 MRSA infection.

268 The feature importance of the current ML was in accordance with the conventionally
269 employed predictive covariates for dosing (Figure 3A) (9, 25). The timing of dose planning
270 also played a role in the current ML, indicating that our practice of adjusting dose planning
271 in a time-dependent manner was incorporated into the ML.

272 The prediction accuracy of ML was suboptimal at 54.2% and 62.5% for the loading and

273 maintenance doses, respectively (Figure 2A). In our previous study, ML for vancomycin
274 initial dose planning also showed limited prediction accuracies of 59.1% and 68.2% for the
275 loading and maintenance doses, respectively (16), indicating overfitting. As small datasets
276 are susceptible to overfitting, ML training with larger sample sizes is required (17). The
277 simple architecture of the current neural network, potential heterogeneity in dose planning
278 among TDM pharmacists, and intrinsic difficulty of multiclass classification tasks may
279 have also affected the prediction accuracy (17). Nevertheless, in line with our previous
280 study, ML predicted the dose planning that was expected to reach the target trough levels as
281 the original regimens by pharmacists (Figure 2C and Table 5) (16). These results suggest
282 that the ML learns basic policies for tailoring the teicoplanin dose in a supervised manner.
283 Interestingly, in contrast to the ML trained with dose planning by TDM pharmacists, the
284 ML trained with dose planning without intervention failed to maintain target attainment by
285 TDM pharmacists (Figure 2C and Table 5). The number of cases with subtherapeutic
286 exposure was expected to increase from 4.8% (1/21) to 47.6% (10/21) when ML was
287 applied, mirroring the propensity toward underdosing in cases without intervention (Tables
288 2 and 4). Taken together, these results suggest that imitation learning can be used to tailor
289 antibiotic doses.

290 We also tested an external validation cohort using cases without intervention. The results
291 showed that the target attainment rates increased when applying ML trained with dose
292 planning by TDM pharmacists (Figure 3B and Table 6). This increase was mainly a result
293 of the enhanced loading doses of ML, as cases with subtherapeutic exposure decreased
294 from 37.0% (30/81) to 22.2% (18/81) (Figure 3B and Table 6). These results indicate that
295 ML plays a role in individualizing the initial dosing regimen as TDM pharmacists.
296 Meanwhile, enhanced loading doses by ML were associated with the incidence of
297 overexposure (e.g., case no. 182, Tables S11 and S12). Therefore, at this preliminary stage,
298 the current model should be used with caution. Moreover, notably, the trough
299 concentrations of the ML regimen were estimated using Bayesian prediction accompanied
300 by assumptions regarding the timing of drug administration and blood sampling, which
301 harbors several limitations in evaluating the performance of the current model. The
302 generalizability and clinical utility of this model should be rigorously evaluated in future
303 prospective studies.

304 In addition to the abovementioned limitations, there are a few other limitations to be noted.
305 First, the current predictive model was derived from a single center with a small sample
306 size, thereby lacking external generalizability. Second, the dose planning by TDM

307 pharmacists in the current study targeted trough levels of 15–30 mg/L; however, recent
308 guidelines have suggested trough levels of 20–40 mg/L for serious and/or complicated
309 MRSA infections (2). Third, although pathophysiological conditions (e.g., hematological
310 malignancy) have been reported to affect the pharmacokinetics of teicoplanin, we did not
311 employ these factors in the ML training phase (26, 27). The next step for developing a more
312 sophisticated ML model for tailoring teicoplanin dosing is to use this information in ML
313 training. Finally, the majority of the study participants were older adults, which may have
314 influenced the prediction performance in younger adults (Table 3).

315 In conclusion, we validated an ML approach to develop a model for tailoring the initial
316 dosing regimen of teicoplanin, which holds promise for complementary dose planning by
317 clinicians. This study, together with our previous work on vancomycin (16), provides a new
318 avenue for achieving early target exposure, which has important ramifications for the
319 successful treatment of invasive MRSA infections.

320

321 **4. Materials and methods**

322

323 **4.1 Study participants**

324 This was a single-center, retrospective, observational study of hospitalized patients who
325 received intravenous teicoplanin between August 2019 and April 2022 at Nagoya
326 University Hospital. TDM pharmacists were defined as pharmacists dedicated to TDM.
327 Patients who commenced teicoplanin treatment with TDM expert-recommended dose
328 regimens during the study period were also included. The exclusion criteria were as
329 follows: patients aged <18 years; undergoing peritoneal dialysis or hemodialysis (including
330 continuous hemodiafiltration); undergoing ECMO; receiving intervention by experts after
331 the initial dose; restarting teicoplanin treatment within 7 days; who were immobile, which
332 indicates decreased muscle mass and may cause overestimation of CL_{CR} ; with surgical
333 antibiotic prophylaxis; and with missing data on sex, age, BW, BMI, and serum albumin
334 and creatinine levels.

335

336 **4.2 Comparison of appropriate blood samplings and trough concentrations between**
337 **the intervention and nonintervention groups**

338 Eligible patients with serum teicoplanin concentrations were enrolled to evaluate the dose
339 planning by TDM pharmacists. In this analysis, the patients were divided according to
340 whether they received dose planning by TDM pharmacists.

341 Patients with intervention were excluded if the time of blood sampling was not described,
342 protocol deviation occurred, dosing regimen was changed by TDM pharmacists after the
343 initial dose, or blood samples were collected after the completion of teicoplanin treatment.
344 Because blood samples for monitoring teicoplanin trough concentrations should be
345 collected at least 18 h after the last dose (2), we monitored the timing of blood sampling. In
346 cases where initial TDM was performed at the recommended time (18 h after the last dose),
347 the target trough achievement (15–30 mg/L) in the intervention group was compared with
348 that in the nonintervention group.

349 Propensity scores were calculated using logistic modeling, with TDM pharmacists' dose
350 planning as the dependent variable. Independent variables included age, BW, BMI, serum
351 albumin level, CL_{CR} calculated using the Cockcroft–Gault equation (28), and timing of
352 dose planning, which were used as input variables in ML construction. The patients were
353 matched 1:1 using the nearest-neighbor technique, with a caliper distance limited to 10% of
354 the standard deviation of the pooled propensity scores.

355 **4.3 Building of the neural network model**

356 The dataset used in this study included clinical and routine laboratory data, initial dosing
357 regimens, and serum teicoplanin concentration at initial TDM (if measured). Age, BW, BMI,
358 serum albumin level, and CL_{CR} were used as features to predict the initial dosing regimens
359 (loading and maintenance doses). We also used the timing of the dose planning (day of the
360 week [T1–T7] and times of day [T0]) as input variables because TDM pharmacists consider
361 dosing regimens so that initial TDM is performed on weekdays as possible. The dataset (n
362 = 118) was divided into training and test datasets in a 94:24 ratio (approximately 80:20).
363 Numeric input variables (age, BW, BMI, serum albumin level, CL_{CR} , and time of day [T0])
364 in the training data were normalized using the following equation:

$$x_{k,i,norm} = \frac{x_{k,i} - \mu_k}{\sigma_k}$$

365 where $x_{k,i}$ is a value of parameter k in sample i , $x_{k,i,norm}$ is a normalized value of
366 parameter k in sample i , μ_k is a mean of parameter k , and σ_k is a standard deviation of
367 parameter k .

368 We applied the same scaling to the input variables in the testing data as in the training data
369 to avoid shifting the distribution of the data. For ICU/HCU stay, the variable takes 1 for
370 ICU/HCU stay and 0 otherwise. On each day of the week, the variables were binarized

371 using one-hot encoding, where T1, T2, T3, T4, T5, T6, and T7 represented Monday,
372 Tuesday, Wednesday, Thursday, Friday, Saturday, and Sunday, respectively. Output
373 variables (loading and maintenance doses) were binarized using one-hot encoding.

374 We built a two-layer neural network model for dose planning, as described elsewhere, using
375 Python (29, 30). The structures of the network for the loading and maintenance doses were
376 the same. Briefly, the network was composed of an input layer, a hidden layer, and an
377 output layer (Figure S2). The activation functions in the hidden and output layers were both
378 sigmoid. The number of hidden neurons was set to 15, which was determined by the sum of
379 $2/3$ of the size of the input layer neurons ($n = 13$) and output layer neurons for the
380 maintenance dose ($n = 7$), as previously proposed (31). Because adding the number of
381 output layer neurons to the loading dose ($n = 14$) did not result in increased predictive
382 accuracy (data not shown), we set the same number of hidden neurons in both ML.

383

384 We trained the neural network to minimize empirical loss over the training data. In this
385 study, we employed cross-entropy loss as the loss function L , which was parameterized by
386 the weight matrices $W1$, $W2$, $b1$, and $b2$ (Figure S2):

387

$$L(W1, W2, b1, b2) = -\frac{1}{N} \sum_x \log f(x)$$

388

389 where X is a matrix of the input variables from each training dataset x , N indicates the
390 number of training data points, and $f(x)$ indicates the score for the correct class.

391

392 We optimized each parameter in the model using stochastic gradient descent with an
393 adaptive learning rate using AdaGrad (32):

$$h \leftarrow h + \nabla_{\theta} L(W)^2$$
$$\theta \leftarrow \theta - \frac{\eta}{|h|} \nabla_{\theta} L(W)$$

394 where θ is a parameter of weight matrix and η is a learning rate (in this study, 0.1).

395

396 **4.4 Feature importance analysis**

397 In the training process, the permutation feature importance (Breiman–Cutler importance)
398 was calculated, as described in previous studies (33, 34). In this process, a single feature
399 value was randomly shuffled while keeping the other input variables constant. Subsequently,
400 decreases in the prediction accuracy, which indicates how the feature contributes to the ML

401 decision, were collected for each input variable. We repeated this process 20 times to
402 measure the mean decrease in the prediction accuracy for each feature:

$$PI_i = \frac{1}{N} \sum_{j=1}^N (PA_{original} - PA_{i,j})$$

403 where PI_i (permutation importance) indicates the permutation importance of feature i , N is
404 the number of repetitions (in this study, 20), $PA_{original}$ indicates the original prediction
405 accuracy, and $PA_{i,j}$ indicates the prediction accuracy upon shuffling feature i .

406

407 **4.5 Estimation of trough concentration with the regimen using the ML model**

408 Data, including serum teicoplanin concentrations at appropriate time points (18 h after the
409 last dose), were included in this analysis. If the ML dosing regimen by the ML was
410 identical to the original dosing regimen, the measured serum teicoplanin concentration was
411 defined as the trough concentration with the ML dosing regimen. Otherwise, the serum
412 teicoplanin concentration in the ML regimen was estimated using Bayesian estimation
413 under the following assumptions:

414 (i) If the cumulative number of doses was the same in the original and ML regimens,
415 only the dose was changed.

416 (ii) If the ML recommended an additional loading dose, additional loading doses were
417 added 8 h after the last dose and every 8 h thereafter.

418 (iii) If the ML did not recommend a maintenance dose, blood sampling was performed
419 18 h after the last dose.

420 (iv) If the ML recommended maintenance dose, every 24 h maintenance dose was
421 assumed to be administered at 9:00 a.m. (at least 8 h after the last dose), followed
422 by TDM sampling at 9:00 a.m. the next day.

423

424 **4.6 Statistical analyses**

425 We used the Mann–Whitney U test to evaluate continuous data. For categorical data, we
426 used Fisher’s exact test or the chi-squared test. All statistical tests were two-tailed, and p
427 values < 0.05 were considered statistically significant. Statistical analyses were performed
428 using the Python Statistics module.

429

430 **5. Supplementary material**

431 Supplemental material is available online only.

432

433 The code for the predictive model with pretrained weights and modules reproducing the
434 results of this study is available at https://github.com/Matsuzaki-T/TEIC_study.git.

435

436

437 **6. Ethics approval**

438 This study was conducted with the approval from the Ethic Committee of Nagoya
439 University Hospital (Approval No. 2022-0071).

440

441 **7. Acknowledgements**

442 This work was supported by Morinomiya Medical Research Foundation, the JSPS
443 KAKENHI (Grant Numbers JP 20H03428 and 22K17824), and the Research Funding for
444 Longevity Sciences (22-21) from National Center for Geriatrics and Gerontology
445 (NCGG), Japan.

446

447 **8. Conflict of Interest**

448 The authors declare no conflict of interests.

449

450 **References**

- 451 1. Rybak MJ, Le J, Lodise TP, Levine DP, Bradley JS, Liu C, Mueller BA, Pai MP,
452 Wong-Beringer A, Rotschafer JC, Rodvold KA, Maples HD, Lomaestro BM. 2020.
453 Therapeutic monitoring of vancomycin for serious methicillin-resistant
454 Staphylococcus aureus infections: A revised consensus guideline and review by the
455 American Society of Health-System Pharmacists, the Infectious Diseases Society of
456 America, the Pediatric Infectious Diseases Society, and the Society of Infectious
457 Diseases Pharmacists. *Am J Health Syst Pharm* 77:835–864.
- 458 2. Hanai Y, Takahashi Y, Niwa T, Mayumi T, Hamada Y, Kimura T, Matsumoto K, Fujii
459 S, Takesue Y. 2022. Clinical practice guidelines for therapeutic drug monitoring of
460 teicoplanin: a consensus review by the Japanese Society of Chemotherapy and the
461 Japanese Society of Therapeutic Drug Monitoring. *J Antimicrob Chemother*
462 77:869–879.
- 463 3. Terol MJ, Sierra J, Gatell JM, Rozman C. 1993. Thrombocytopenia due to use of
464 teicoplanin. *Clin Infect Dis* 17:927.eases.
- 465 4. Hanai Y, Takahashi Y, Niwa T, Mayumi T, Hamada Y, Kimura T, Matsumoto K, Fujii
466 S, Takesue Y. 2021. Optimal trough concentration of teicoplanin for the treatment of

- 467 methicillin-resistant *Staphylococcus aureus* infection: A systematic review and
468 meta-analysis. *J Clin Pharm Ther* 46:622–632.
- 469 5. Ueda T, Takesue Y, Nakajima K, Ichiki K, Doita A, Wada Y, Tsuchida T, Takahashi Y,
470 Ishihara M, Ikeuchi H, Uchino M, Kimura T. 2016. Enhanced loading regimen of
471 teicoplanin is necessary to achieve therapeutic pharmacokinetics levels for the
472 improvement of clinical outcomes in patients with renal dysfunction. *Eur J Clin*
473 *Microbiol Infect Dis* 35:1501–1509.
- 474 6. Nakamura A, Takasu O, Sakai Y, Sakamoto T, Yamashita N, Mori S, Morita T,
475 Nabeta M, Hirayu N, Yoshiyama N, Moroki M, Tashiro K, Kannae M. 2015.
476 Development of a teicoplanin loading regimen that rapidly achieves target serum
477 concentrations in critically ill patients with severe infections. *J Infect Chemother*
478 21:449–455.
- 479 7. Ueda T, Takesue Y, Nakajima K, Ichiki K, Ishikawa K, Takai Y, Yamada K, Tsuchida
480 T, Otani N, Takahashi Y, Ishihara M, Takubo S, Ikeuchi H, Uchino M, Kimura T.
481 2020. Clinical efficacy and safety in patients treated with teicoplanin with a target
482 trough concentration of 20 µg/mL using a regimen of 12 mg/kg for five doses within
483 the initial 3 days. *BMC Pharmacol Toxicol* 21:50.

- 484 8. Thalakada R, Legal M, Lau TTY, Luey T, Batterink J, Ensom MHH. 2012.
485 Development and validation of a novel vancomycin dosing nomogram for achieving
486 high-target trough levels at 2 Canadian teaching hospitals. *Can J Hosp Pharm*
487 65:180–187.
- 488 9. Broeker A, Nardecchia M, Klinker KP, Derendorf H, Day RO, Marriott DJ, Carland
489 JE, Stocker SL, Wicha SG. 2019. Towards precision dosing of vancomycin: A
490 systematic evaluation of pharmacometric models for Bayesian forecasting. *Clin*
491 *Microbiol Infect* 25:1286.e1–1286.e7.
- 492 10. Oda K, Katanoda T, Hashiguchi Y, Kondo S, Narita Y, Iwamura K, Nosaka K, Jono
493 H, Saito H. 2020. Development and evaluation of a vancomycin dosing nomogram
494 to achieve the target area under the concentration-time curve. A retrospective study. *J*
495 *Infect Chemother* 26:444–450.
- 496 11. Vamathevan J, Clark D, Czodrowski P, Dunham I, Ferran E, Lee G, Li B,
497 Madabhushi A, Shah P, Spitzer M, Zhao S. 2019. Applications of machine learning
498 in drug discovery and development. *Nat Rev Drug Discov* 18:463–477.
- 499 12. Shah P, Kendall F, Khozin S, Goosen R, Hu J, Laramie J, Ringel M, Schork N. 2019.
500 Artificial intelligence and machine learning in clinical development: A translational

- 501 perspective. NPJ Digit Med 2:69.
- 502 13. Imai S, Takekuma Y, Miyai T, Sugawara M. 2020. A new algorithm optimized for
503 initial dose settings of vancomycin using machine learning. Biol Pharm Bull
504 43:188–193.
- 505 14. Miyai T, Imai S, Yoshimura E, Kashiwagi H, Sato Y, Ueno H, Takekuma Y,
506 Sugawara M. 2022. Machine learning-based model for estimating vancomycin
507 maintenance dose to target the area under the concentration curve of 400–600
508 mg·h/L in Japanese patients. Biol Pharm Bull 45:1332–1339.
- 509 15. Stefan Schaal. 1999. Is imitation learning the route to humanoid robots? Trends
510 Cogn Sci 3:233–242.
- 511 16. Matsuzaki T, Kato Y, Mizoguchi H, Yamada K. 2022. A machine learning model that
512 emulates experts’ decision making in vancomycin initial dose planning. J Pharmacol
513 Sci 148:358–363.
- 514 17. D’souza RN, Huang PY, Yeh FC. 2020. Structural analysis and optimization of
515 convolutional neural networks with a small sample size. Sci Rep 10:834.
- 516 18. Wilson APR. 1997. Safety. In: Teicoplanin; The First Decade. Abingdon, UK, The
517 Medicine Group (Education) Ltd.; 134–144.

- 518 19. Wilson APR, Griineberg RN, Neub H. 1994. A critical review of the dosage of
519 teicoplanin Europe and the USA. *Int J Antimicrob Agents* 4 Suppl 1:1–30.
- 520 20. Momattin H, Zogheib M, Homoud A, Al-Tawfiq JA. 2015. Safety and outcome of
521 pharmacy-led vancomycin dosing and monitoring. *Chemotherapy* 61:3–7.
- 522 21. Komoto A, Maiguma T, Teshima D, Sugiyama T, Haruki Y. 2018. Effects of
523 pharmacist intervention in vancomycin treatment for patients with bacteremia due to
524 methicillin-resistant *Staphylococcus aureus*. *PLoS One* 13:e0203453.
- 525 22. Cavalcanti AB, Goncalves AR, Almeida CS, Bugano DD, Silva E. 2010. Teicoplanin
526 versus vancomycin for proven or suspected infection. *Cochrane Database Syst Rev*
527 16:CD007022.
- 528 23. Oda K, Hashiguchi Y, Katanoda T, Nakata H, Jono H, Saito H. 2021. Lowered risk
529 of nephrotoxicity through intervention against the combined use of vancomycin and
530 tazobactam/piperacillin: A retrospective cohort study. *Microbiol Spectr* 9:e0035521.
- 531 24. Okada N, Fushitani S, Azuma M, Nakamura S, Nakamura T, Teraoka K, Watanabe H,
532 Abe M, Kawazoe K, Ishizawa K. 2016. Clinical evaluation of pharmacist
533 interventions in patients treated with anti-methicillin-resistant *Staphylococcus aureus*
534 agents in a hematological ward. *Biol Pharm Bull* 39:295–300.

- 535 25. Vandecasteele SJ, de Vriese AS. 2010. Recent changes in vancomycin use in renal
536 failure. *Kidney Int* 77:760–764.
- 537 26. Byrne CJ, Egan S, Fennell JP, O’Byrne P, Enright H, Deasy E, Ryder SA, D’Arcy
538 DM, McHugh J. 2015. Teicoplanin use in adult patients with haematological
539 malignancy: Exploring relationships between dose, trough concentrations, efficacy
540 and nephrotoxicity. *Int J Antimicrob Agents* 46:406–412.
- 541 27. Byrne CJ, Roberts JA, McWhinney B, Fennell JP, Deasy E, Egan S, Desmond R,
542 Enright H, Ryder SA, D DM. 2017. Variability in trough total and unbound
543 teicoplanin concentrations and achievement of therapeutic drug monitoring targets in
544 adult patients with hematological malignancy. *Antimicrob Agents Chemother*
545 61:e02466-16.
- 546 28. Cockcroft DW, Gault H. 1976. Prediction of creatinine clearance from serum
547 creatinine. *Nephron* 16:31–41.
- 548 29. Lamba A, Cassey P, Segaran RR, Koh LP. 2019. Deep learning for environmental
549 conservation. *Curr Biol* 29:R977–R982.
- 550 30. Kriegeskorte N, Golan T. 2019. Neural network models and deep learning. *Curr Biol*
551 29:R231–R236.

- 552 31. Gaurang P, Amit G, Y P K, Devyani Panchal. 2011. Behaviour analysis of multilayer
553 perceptrons with multiple hidden neurons and hidden layers. *Int J Comput Theory*
554 *Eng* 3:332–337.
- 555 32. Duchi J, Hazan E, Singer Y. 2011. Adaptive subgradient methods for online learning
556 and stochastic optimization. *J Mach Learn Res* 12:2121–2159.
- 557 33. Breiman L. 2001. Random forests. *Mach Learn* 45:5–32.
- 558 34. Chen X, Ishwaran H. 2012. Random forests for genomic data analysis. *Genomics*
559 99:323–329.
- 560

561 **Figure 1.** Flow of case selection in the study.

562

563

564 **Figure 2. (A)** Learning curves of the neural network through training and testing using
565 dataset from the intervention group. **(B)** Cumulative dose of teicoplanin before initial TDM
566 in TDM pharmacists and ML regimens. (Left) TDM pharmacists vs. ML trained with cases
567 with intervention (TDM pharmacists ML). (Right) TDM pharmacists vs. ML trained with
568 cases without intervention (non-TDM pharmacists ML). Line indicates reference line of $y =$
569 x .

570 **(C)** Serum concentration at initial blood sampling with TDM pharmacists and ML regimens.
571 (Left) TDM pharmacists vs. ML trained with cases with intervention (TDM pharmacists
572 ML). (Right) TDM pharmacists vs. ML trained with cases without intervention (non-TDM
573 pharmacists ML). Gray area indicates therapeutic windows (15–30 mg/L).

574

575 **Figure 3. (A)** Permutation feature importance for loading dose (top) and maintenance dose
576 (bottom) decision. **(B)** Serum concentration at initial blood sampling with non-TDM
577 pharmacists and ML regimens. Blue line and blue dashed lines indicate regression line and

578 95% confidence interval, respectively. (C) Cumulative dose of teicoplanin before initial
579 TDM with non-TDM pharmacists and ML regimens. Line indicates reference line of $y = x$.

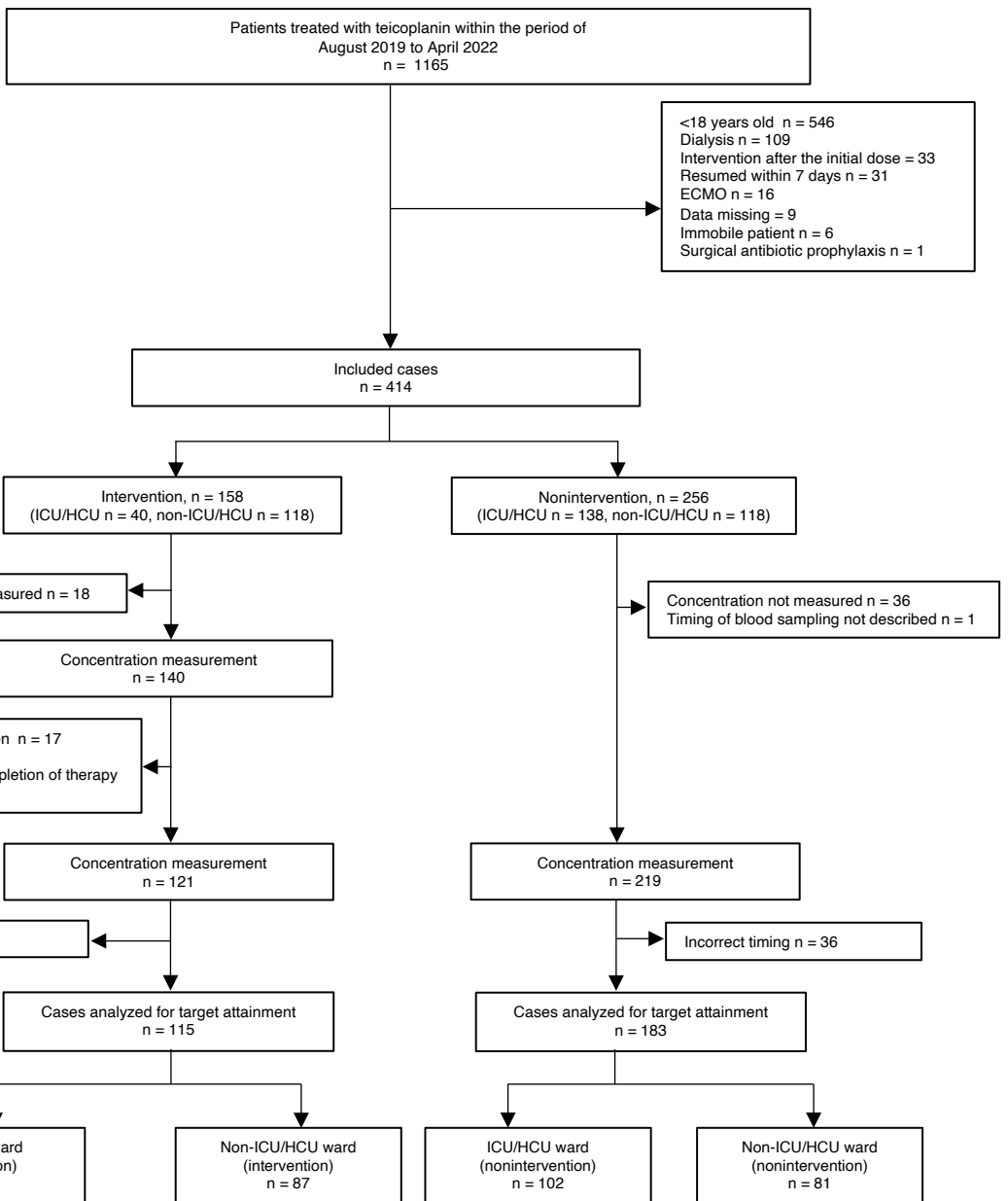


Figure 1. Flow of case selection in the study.

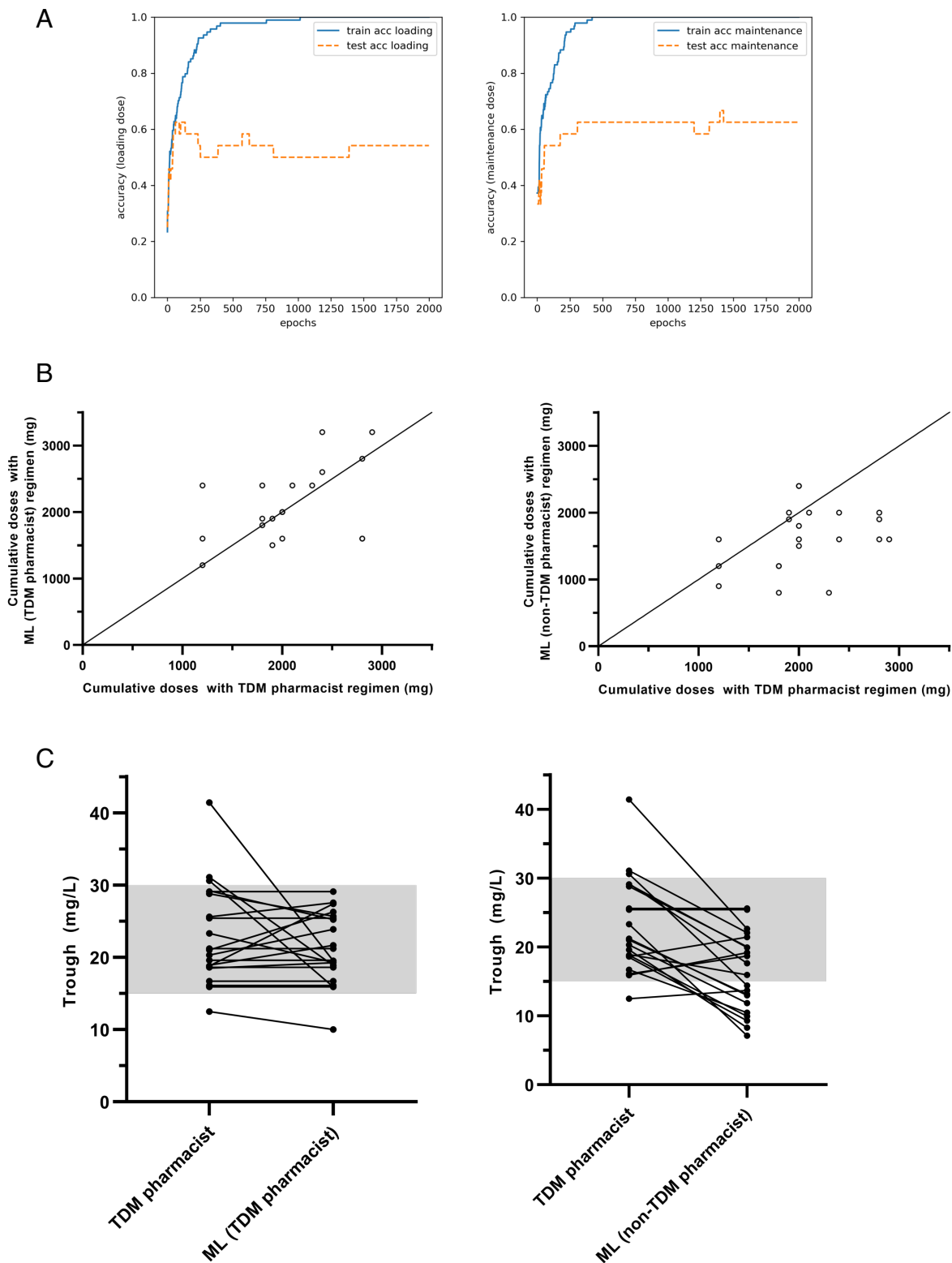


Figure 2. (A) Learning curves of the neural network through training and testing using dataset from the intervention group. (B) Cumulative dose of teicoplanin before initial TDM in TDM pharmacists and ML regimens. (Left) TDM pharmacists vs. ML trained with cases with intervention (TDM pharmacists ML). (Right) TDM pharmacists vs. ML trained with cases without intervention (non-TDM pharmacists ML). Line indicates reference line of $y = x$. (C) Serum concentration at initial blood sampling with TDM pharmacists and ML regimens. (Left) TDM pharmacists vs. ML trained with cases with intervention (TDM pharmacists ML). (Right) TDM pharmacists vs. ML trained with cases without intervention (non-TDM pharmacists ML). Gray area indicates therapeutic windows (15–30 mg/L).

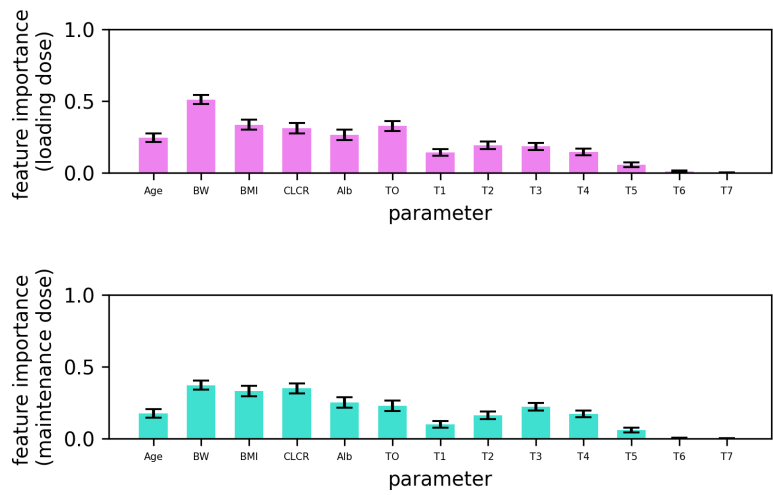
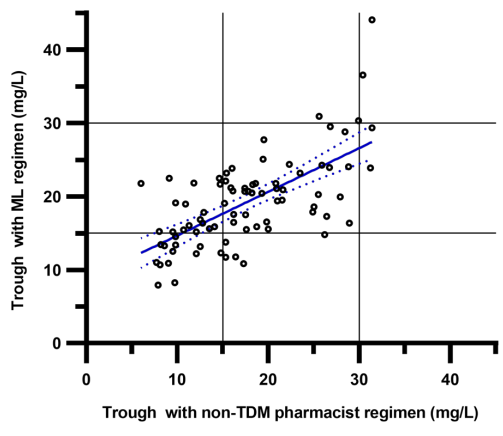
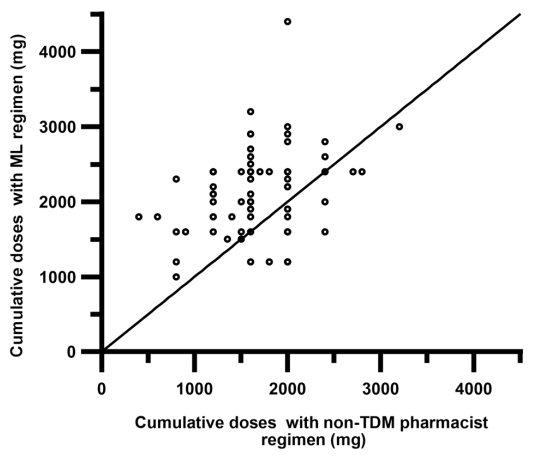
A**B****C**

Figure 3. (A) Permutation feature importance for loading dose (top) and maintenance dose (bottom) decision. (B) Serum concentration at initial blood sampling with non-TDM pharmacists and ML regimens. Blue line and blue dashed lines indicate regression line and 95% confidence interval, respectively. (C) Cumulative dose of teicoplanin before initial TDM with non-TDM pharmacists and ML regimens. Line indicates reference line of $y = x$.

Table 1. Blood sampling time

Group Sampling time	Intervention (%)	Nonintervention (%)	p-value (Fisher's exact test)
Correct	115 (95.0%)	183 (83.6%)	0.0017
Incorrect	6 (5.0%)	36 (16.4%)	

medRxiv preprint doi: <https://doi.org/10.1101/2023.12.14.23299934>; this version posted December 17, 2023. The copyright holder for this preprint (which was not certified by peer review) is the author/funder, who has granted medRxiv a license to display the preprint in perpetuity.

It is made available under a [CC-BY-ND 4.0 International license](https://creativecommons.org/licenses/by-nd/4.0/) .

Table2. Target attainment

Group \ Trough (mg/L)	Intervention			Nonintervention			p-value (Chi-square test)
	<15	15–30	>30	<15	15–30	>30	
Whole (%)	17 (14.8)	86 (74.8)	12 (10.4)	68 (37.2)	106 (57.9)	9 (4.9)	0.004
ICU/HCU (%)	9 (32.1)	17 (60.7)	2 (7.1)	38 (37.3)	59 (57.8)	5 (4.9)	0.832
non-ICU/HCU (%)	8 (9.2)	69 (79.3)	10 (11.5)	30 (37.0)	47 (58.0)	4 (4.9)	0.004

Abbreviations: ICU, intensive care unit; HCU, high care unit.

Table 3. Demographic, clinical, and laboratory characteristics of eligible cases without ICU/HCU admission for TDM analysis

		Intervention (n = 87)	Nonintervention (n = 81)	p-value
Sex	Male	65	52	0.139 ^a
	Female	22	29	
Age (year) [median (IQR)]		73 (19.5)	71 (25)	0.106 ^b
BW (kg) [mean± SD]		55.7±11.7	55.4±11.9	0.781 ^b
BMI [mean±SD]		21.2±3.7	21.2±4.0	0.907 ^b
CL _{CR} [mean±SD]		61.8±40.0	82.2±58.0	0.009 ^b
Alb [mean±SD]		2.6±0.5	2.7±0.6	0.099 ^b

Abbreviations: ICU, intensive care unit; HCU, high care unit; TDM, therapeutic drug monitoring; IQR, interquartile range; BW, body weight; SD, standard deviation; BMI, body mass index; CL_{CR}, creatinine clearance; Alb, serum albumin.

^a Chi-square test.

^b Mann-Whitney U test.

Table 4. Target attainment after propensity score matching (non-ICU/HCU)

Trough (mg/L) \ Group	Intervention (%)	Nonintervention (%)	p-value (Chi-square test)
<15	5 (10.4)	16 (33.3)	0.013
15–30	40 (83.3)	29 (60.4)	
>30	3 (6.3)	3 (6.3)	

Abbreviations: ICU, intensive care unit; HCU, high care unit.

Table 5. Target attainment (internal validation)

Group Trough (mg/L)	TDM pharmacists (%)	ML by TDM pharmacists (%)	ML by non-TDM pharmacists (%)
<15	1 (4.8)	1 (4.8)	10 (47.6)
15–30	17 (81.0)	20 (95.3)	11 (52.4)
>30	3 (14.3)	0 (0.0)	0 (0.0)

Abbreviations: ML, machine learning.

Table 6. Target attainment (external validation)

Trough (mg/L) \ Group	Nonintervention (%)	ML by TDM pharmacists (%)	p-value (Chi-square test)
<15	30 (37.0)	18 (22.2)	0.047
15–30	47 (58.0)	59 (72.8)	
>30	4 (4.9)	4 (4.9)	

Abbreviations: ML, machine learning.